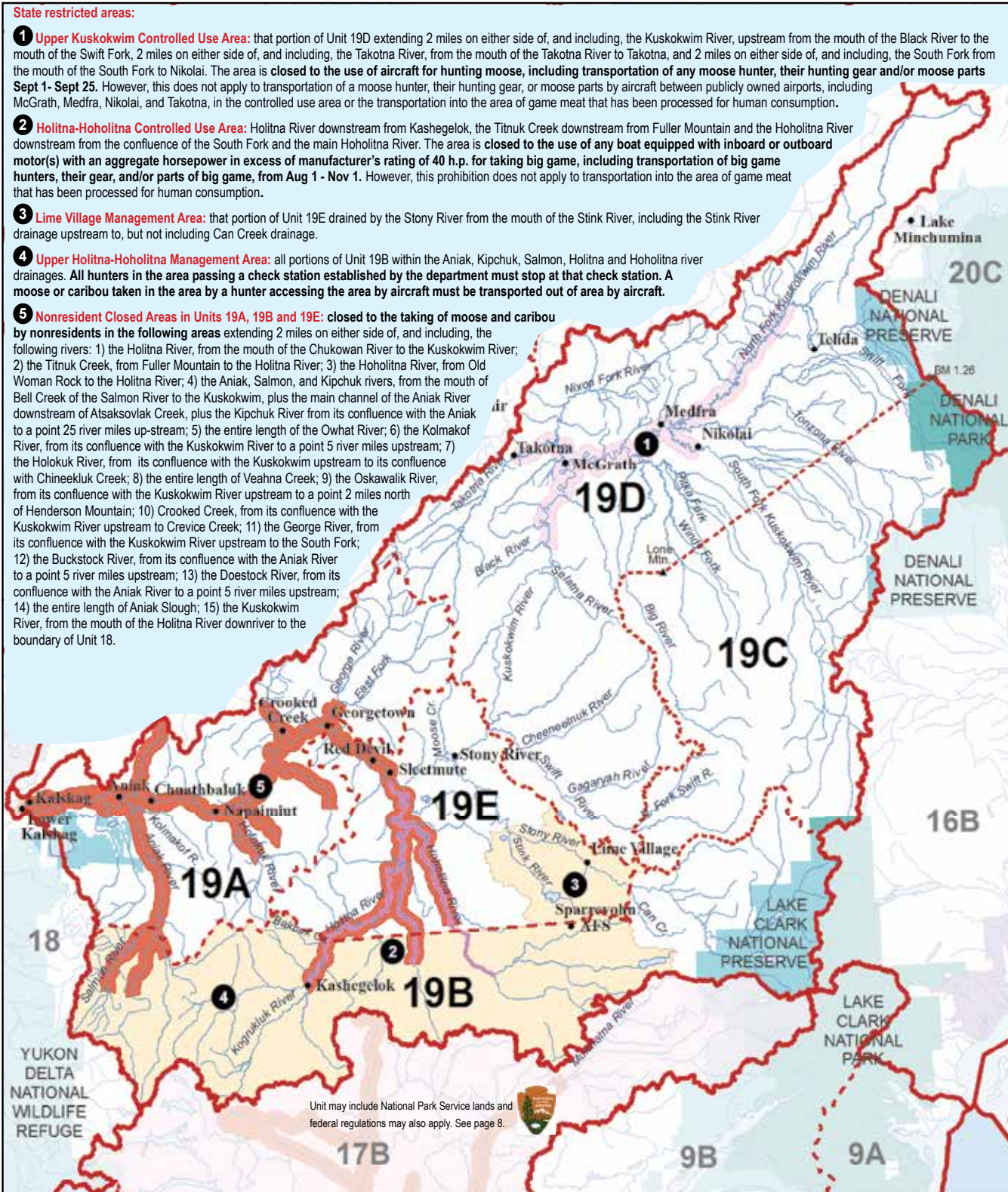


State restricted areas:

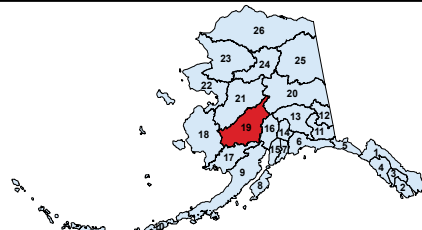
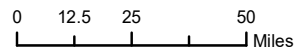
- 1 **Upper Kuskokwim Controlled Use Area:** that portion of Unit 19D extending 2 miles on either side of, and including, the Kuskokwim River, upstream from the mouth of the Black River to the mouth of the Swift Fork, 2 miles on either side of, and including, the Takotna River, from the mouth of the Takotna River to Takotna, and 2 miles on either side of, and including, the South Fork from the mouth of the South Fork to Nikolai. The area is **closed to the use of aircraft for hunting moose, including transportation of any moose hunter, their hunting gear and/or moose parts Sept 1 - Sept 25.** However, this does not apply to transportation of a moose hunter, their hunting gear, or moose parts by aircraft between publicly owned airports, including McGrath, Medfra, Nikolai, and Takotna, in the controlled use area or the transportation into the area of game meat that has been processed for human consumption.
- 2 **Holitna-Hoholitna Controlled Use Area:** Holitna River downstream from Kashegelo, the Titnuk Creek downstream from Fuller Mountain and the Hoholitna River downstream from the confluence of the South Fork and the main Hoholitna River. The area is **closed to the use of any boat equipped with inboard or outboard motor(s) with an aggregate horsepower in excess of manufacturer's rating of 40 h.p. for taking big game, including transportation of big game hunters, their gear, and/or parts of big game, from Aug 1 - Nov 1.** However, this prohibition does not apply to transportation into the area of game meat that has been processed for human consumption.
- 3 **Lime Village Management Area:** that portion of Unit 19E drained by the Stony River from the mouth of the Stink River, including the Stink River drainage upstream to, but not including Can Creek drainage.
- 4 **Upper Holitna-Hoholitna Management Area:** all portions of Unit 19B within the Aniak, Kipchuk, Salmon, Holitna and Hoholitna river drainages. **All hunters in the area passing a check station established by the department must stop at that check station. A moose or caribou taken in the area by a hunter accessing the area by aircraft must be transported out of area by aircraft.**
- 5 **Nonresident Closed Areas in Units 19A, 19B and 19E:** closed to the taking of moose and caribou by nonresidents in the following areas extending 2 miles on either side of, and including, the following rivers: 1) the Holitna River, from the mouth of the Chukowan River to the Kuskokwim River; 2) the Titnuk Creek, from Fuller Mountain to the Holitna River; 3) the Hoholitna River, from Old Woman Rock to the Holitna River; 4) the Aniak, Salmon, and Kipchuk rivers, from the mouth of Bell Creek of the Salmon River to the Kuskokwim, plus the main channel of the Aniak River downstream of Atsakovlak Creek, plus the Kipchuk River from its confluence with the Aniak to a point 25 river miles up-stream; 5) the entire length of Veahna Creek; 6) the Kolmakof River, from its confluence with the Kuskokwim River to a point 5 river miles upstream; 7) the Holokuk River, from its confluence with the Kuskokwim upstream to its confluence with Chineekluk Creek; 8) the entire length of Veahna Creek; 9) the Oskawalik River, from its confluence with the Kuskokwim River upstream to a point 2 miles north of Henderson Mountain; 10) Crooked Creek, from its confluence with the Kuskokwim River upstream to Crevice Creek; 11) the George River, from its confluence with the Kuskokwim River upstream to the South Fork; 12) the Buckstock River, from its confluence with the Aniak River to a point 5 river miles upstream; 13) the Doestock River, from its confluence with the Aniak River to a point 5 river miles upstream; 14) the entire length of Aniak Slough; 15) the Kuskokwim River, from the mouth of the Holitna River downriver to the boundary of Unit 18.



Unit may include National Park Service lands and federal regulations may also apply. See page 8.

Unit 19 McGrath

Region 3



Game Management Units / Special Management Areas

- | | | |
|--|--|--------------------------------------|
| Closed Areas | National Parks | Military Boundary |
| Controlled Use Areas | National Preserves & Other Federal Lands | Military Closure |
| Management Areas | Unit Boundary | Tangle Lakes Archaeological District |
| State Refuges, Sanctuaries, & Critical Habitat Areas | Subunit Boundary | Roads |
| Other State Lands | City Boundary | Railroads |
| | | Trails |

Unit 19

McGrath

See map on page 100 for state restricted areas in Unit 19.

Unit 19: All drainages into the Kuskokwim River, excluding the drainages of Arhymot Lake, upstream from a line starting at the outlet of Arhymot Lake at Crooked Creek (locally known as Johnson River), then along the south bank of Crooked Creek downstream to the northern terminus of Crooked Creek to the Yukon- Kuskokwim Portage (locally known as the to Mud Creek Tramway), then along the west side of the tramway to Mud Creek, then along the westerly bank of Mud Creek downstream to an unnamed slough of the Kuskokwim River (locally known as First Slough or Kalskag Slough), then along the west bank of this unnamed slough downstream to its confluence with the Kuskokwim River, then southeast across the Kuskokwim River to its southerly bank, then follow the south bank of the Kuskokwim River upriver to the confluence of a Kuskokwim River slough locally known as Old River, then across Old River to the downriver terminus of the island formed by Old River and the Kuskokwim River, then follow the north bank of the main channel of Old River to Igyalleq Creek (Whitefish Creek), then follow the south and west bank of Igyalleq Creek to Whitefish Lake, then directly across Whitefish Lake to Ophir Creek then follow the west bank of Ophir Creek to its headwaters at N61° 10.22', W159° 46.05';

Unit 19A: that portion of Unit 19 in the Kuskokwim River drainage downstream from and including the George River drainage, and downstream from and excluding the Downey Creek drainage.

Unit 19B: that portion of Unit 19 in the Aniak River drainage upstream from and including the Salmon River drainage, the Holitna River drainage upstream from and including the Bakbuk Creek drainage, that area south of a line from the mouth of Bakbuk Creek to the radar dome at Sparrevojn Air Force Base, including the Hoholitna River drainage upstream from that line, and the Stony River drainage upstream from and including the Can Creek drainage;

Unit 19C: that portion of Unit 19 south and east of a line from Benchmark M1.26 (approximately 1.26 miles south of the northwest corner of the original Mt. McKinley National Park boundary) to the peak of Lone Mountain, then due west to Big River; including the Big River drainage upstream from that line, and including the Swift River drainage upstream from and including the North Fork drainage;

Unit 19D: Unit 19 drained by the Kuskokwim River drainage upstream from and including the Swift River drainage, excluding Unit 19C.

Unit 19E: the remainder of Unit 19.

A portion of this unit is within a predator control area. See predator control supplement for special regulations. Supplement available online at <http://hunt.alaska.gov>

OPEN TO:		R = RESIDENTS ONLY	B = RESIDENTS AND NONRESIDENTS	N = NONRESIDENTS ONLY		
OPEN TO:	UNIT/ AREA	BAG LIMIT AND SPECIAL INSTRUCTIONS			PERMIT/ HUNT #*	OPEN SEASON
Black Bear • See pages 24-27 for bear information and salvage requirements.						
B	19A, 19E	Five bears				no closed season
B	19D	Five bears			HT	no closed season
B	19B, 19C	Three bears				no closed season
Brown/Grizzly Bear <ul style="list-style-type: none"> • No resident locking-tag required. • Nonresident hunters must be accompanied by a guide, see page 10. • See pages 24-27 for additional bear hunting information. • Evidence of sex must remain naturally attached to the hide. 						
B	19A, 19D, 19E	Two bears every regulatory year				Aug 10-June 30
B	19B, 19C	One bear every regulatory year				Sept 1-May 31
In addition to other regulations, subsistence regulations apply to the following "Residents Only" hunts (see page 25)						
R	19A	downstream of and including the Aniak River drainage	Two bears every regulatory year by permit available in Galena, Fairbanks, and McGrath beginning July 6		RB601	Aug 10-June 30
R	19B	Aniak River drainage	One bear every regulatory year by permit available in Galena, Fairbanks, and McGrath beginning July 6		RB601	Aug 10-June 30
Bison <ul style="list-style-type: none"> • Nonresidents can only win one bison permit per lifetime. • Unit 19 meat-on-bone salvage requirements, see page 22. 						
R	19C 19D	One bison every ten regulatory years by permit			DI351	Aug 22-Oct 10
N		One bison per lifetime of a hunter by permit				
R		One bull every ten regulatory years by permit			DI352	Mar 1-Mar 31
N		One bull per lifetime of a hunter by permit				
Caribou <ul style="list-style-type: none"> • Proxy hunting restrictions apply, see page 12. • Unit 19 meat-on-bone salvage requirements, see page 22. • In bag limit "caribou" means an animal of either sex; "bull" means male caribou. • In all hunts limited to one sex, evidence of sex must remain naturally attached to the meat. 						
R	19A 19B 19E	One caribou by permit			RC503	no open season
N						no open season
B	19C	One bull			HT	Aug 10-Sept 20

*Hunt numbers starting with a "C" = Community, "D" = Drawing, "HT" = Harvest ticket, "R" = Registration, "T" = Tier II. See pages 14-15.

OPEN TO:		R = RESIDENTS ONLY	B = RESIDENTS AND NONRESIDENTS	N = NONRESIDENTS ONLY		
OPEN TO:	UNIT/ AREA	BAG LIMIT AND SPECIAL INSTRUCTIONS			PERMIT/ HUNT #*	OPEN SEASON
Caribou <i>continued</i>						
B		One bull			HT	Aug 10-Sept 20
R	19D	One bull by permit available in person at license vendors in McGrath, Nikolai, and Takotna beginning Jan 15			RC795	Feb 1-Feb 29
Moose <ul style="list-style-type: none"> • In areas indicated by a ★ federal restrictions exist, see pg 8. • Unit 19 meat-on-bone salvage requirements, see page 22. • Spike-fork, 50-inch antlers, and brow tines are defined on pages 30-31. • In all hunts limited to one sex, evidence of sex must remain naturally attached to the meat. 						
R	19A ★	Kuskokwim River drainage downstream from, and including, the George River drainage, and downstream from and excluding the Downey Creek drainage		One antlered bull by permit	TM680	Sept 1-Sept 20
R	19B	within the Nonresident Closed Area	One bull with spike-fork or 50-inch antlers or antlers with 4 or more brow tines on at least one side		HT	Sept 1-Sept 20
R		One bull with spike-fork or 50-inch antlers or antlers with 4 or more brow tines on at least one side			HT	Sept 1-Sept 20
N	19B remainder	One bull with 50-inch antlers or antlers with 4 or more brow tines on at least one side. Nonresidents must complete an ADF&G-approved hunter orientation course or must be accompanied in the field by a registered guide or resident relative within the second-degree of kindred. Contact ADF&G (907) 459-7206		Nonresident orientation required (see page 103)	HT	Sept 5-Sept 20
R	19C	west of the South Fork Kuskokwim, East of the Windy Fork Kuskokwim and north of a line between 62° 24' N, 154° 7' W and 62° 30' N, 153° 32' W	One bull with spike-fork, 50-inch antlers or antlers with 4 or more brow tines on at least one side. Permit available online at http://hunt.alaska.gov , or in person in McGrath, Anchorage, Fairbanks and Palmer, beginning Aug 1		RM653	Sept 1-Sept 20
N			One bull by permit available in person in McGrath and Nikolai beginning Jan 15; aircraft prohibited Jan 1-Feb 29		RM655	Feb 1-Feb 29
R	19C remainder		One bull with spike-fork or 50-inch antlers or antlers with 4 or more brow tines on at least one side		HT	Sept 1-Sept 20
R			One bull by permit available in person in McGrath and Nikolai beginning Jan 15; aircraft prohibited Jan 1-Feb 29		RM655	Feb 1-Feb 29
N			One bull with 50-inch antlers or antlers with 4 or more brow tines on at least one side		HT	Sept 1-Sept 20
R	19D	Upper Kuskokwim Controlled Use Area	One antlered bull by permit available in person in McGrath, Nikolai, and Takotna July 24-Aug 18		RM650	Sept 1-Sept 25
R			One moose however, no person may take a cow accompanied by a calf. Permit available in person in McGrath, Nikolai, and Takotna Jan 15.		RM660	Feb 1-Feb 29
R	19D	within the Kuskokwim drainage, upstream from the Selatna River drainage, excluding the Black River drainage, excluding Upper Kuskokwim Controlled Use Area	One antlered bull by permit available in person in McGrath, Nikolai, and Takotna July 24-Aug 18		RM650	Sept 1-Sept 25
R			One moose however, no person may take a cow accompanied by a calf. Permit available in person in McGrath, Nikolai, and Takotna Jan 15.		RM660	Feb 1-Feb 29
R			One antlered bull		HT	Sept 1-Sept 20

*Hunt numbers starting with a "C" = Community, "D" = Drawing, "HT" = Harvest ticket, "R" = Registration, "T" = Tier II. See pages 14-15.

OPEN TO:		R = RESIDENTS ONLY	B = RESIDENTS AND NONRESIDENTS	N = NONRESIDENTS ONLY		
OPEN TO:	UNIT/ AREA	BAG LIMIT AND SPECIAL INSTRUCTIONS			PERMIT/ HUNT #*	OPEN SEASON
Moose <i>continued</i>						
R	19D	between and including the Cheeneetnuk and Gagaryah river drainages, excluding within 2 miles of the Swift River	<input type="checkbox"/> One antlered bull by permit available in person in McGrath, Nikolai, and Takotna July 24-Aug 18 OR <input type="checkbox"/> One antlered bull		RM650	Sept 1-Sept 25
N			One bull with 50-inch antlers or antlers with 4 or more brow tines on at least one side		HT	Sept 1-Sept 20
R	19D remainder		<input type="checkbox"/> One antlered bull by permit available in person in McGrath, Nikolai, and Takotna July 24-Aug 18 OR <input type="checkbox"/> One antlered bull		RM650	Sept 1-Sept 25
N					HT	Sept 1-Sept 20
R	19E Lime Village Management Area	Two bulls by permit			TM684	Aug 10-Sept 25 Nov 20-Mar 31
R	19E remainder	One antlered bull by permit available in Sleetmute and Stony River July 24-28	Permits issued on a first-come first-served basis (number of permits to be announced).		RM682	Sept 1-Sept 5
Sheep <ul style="list-style-type: none"> • Nonresident hunters must be accompanied by a guide, see page 10. • Horns must accompany meat from the field. • All sheep must be sealed within 30 days of kill. • See definition of 3/4 and full-curl horn and drawings on page 33. 						
R	19A 19B 19D 19E	One ram with full-curl horn or larger. Youth hunt only			HT	Aug 1-Aug 5
N		One ram with full-curl horn or larger every four regulatory years. Youth hunt only				
R	19C	One ram with full-curl horn or larger			HT	Aug 10-Sept 20
N		One ram with full-curl horn or larger every four regulatory years				
R	19C	One ram with full-curl horn or larger. Youth hunt only			HT	no open season
N		One ram with full-curl horn or larger every four regulatory years. Youth hunt only				
R	19C	One ram with full-curl horn or larger			HT	Aug 10-Sept 20
N		One ram with full-curl horn or larger every four regulatory years				
R	19C	One ram with 3/4 curl horn or smaller; excluding rams with both tips broken; by permit available online at http://hunt.alaska.gov or in person in McGrath and Nikolai beginning Sept 26; check in/out required due to small quota; aircraft prohibited. Contact McGrath at (907) 524-3323			RS380	Oct 1-Apr 30
Wolf <ul style="list-style-type: none"> • Hides must be sealed within 30 days of kill. • No nonresident locking-tag required. 						
B	19	Ten wolves				Aug 1-Apr 30
Wolverine <ul style="list-style-type: none"> • Hides must be sealed within 30 days of kill. 						
B	19	One wolverine				Sept 1-Mar 31

*Hunt numbers starting with a "C" = Community, "D" = Drawing, "HT" = Harvest ticket, "R" = Registration, "T" = Tier II. See pages 14-15.

Orientation Requirement for NONRESIDENT Moose Hunters

Unit 19B - A nonresident hunter must have viewed the hunter orientation materials: "Is This Moose Legal" video and the "Field Care of Big Game" video and completed the quiz prior to hunting or must be accompanied in the field by an Alaska licensed guide or resident relative within the second-degree of kindred. Videos are available at <http://hunt.alaska.gov> or at ADF&G offices. You may print the certification card online, or contact ADF&G at (907) 459-7206 to obtain your certification card; proof of certification must be carried in the field.