

## General Regulations - Prince William Sound

**Inclusive waters:** All fresh waters draining into Prince William Sound from Cape Fairfield to Cape Suckling, excluding the Copper River drainage upstream of a line crossing the Copper River between the south bank of the confluence of Haley Creek and the south bank of the confluence of Canyon Creek in Wood's Canyon. Salt waters within 200 miles of shore from Cape Suckling to Cape Fairfield.

**In the fresh waters of Prince William Sound, only unbaited artificial lures or flies are allowed April 15-June 14.**

**The Fishing Season for all species is open year-round unless otherwise noted below.**

**Snagging:** Except for the Whittier Small Boat Harbor and the Cordova Terminal Harvest Area, snagging is legal year-round in Prince William Sound salt waters.

**Gaffs:** A gaff may not be used to puncture any fish intended or required to be released.

### **KING SALMON**

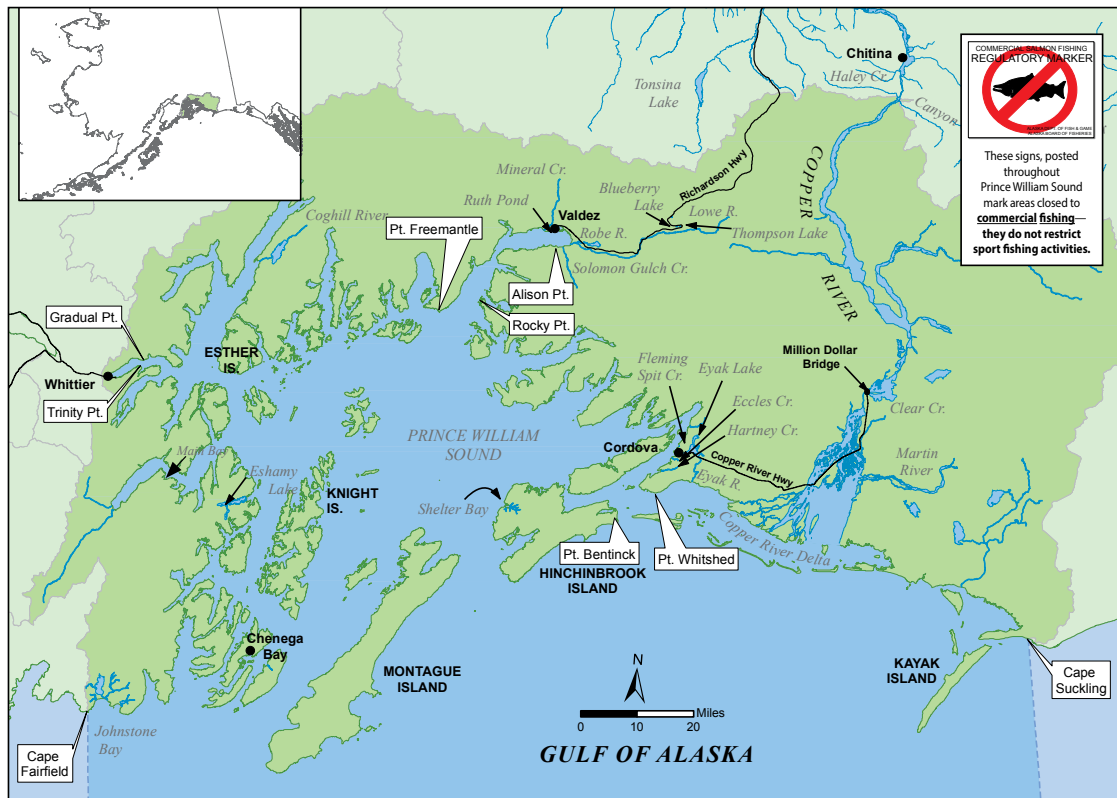
- No annual limit or recording requirement.
- Fresh waters:
  - 20 inches or longer: 2 per day, 4 in possession.
  - Less than 20 inches: 10 per day, 10 in possession.
- Salt waters:
  - 2 per day, 4 in possession, no size limit.

### **OTHER SALMON**

- Fresh waters:
  - 6 per day, 12 in possession, only 3 per day, 3 in possession may be coho (silver) salmon.
- Salt waters:
  - Pink and chum salmon taken in a sport fishery may be used as bait, but are part of your bag limit.
  - 6 per day, 12 in possession, only 3 per day, 3 in possession may be coho (silver) salmon.

### **RAINBOW/STEELHEAD AND CUTTHROAT TROUT**

- In unstocked lakes and ponds, all flowing waters and in salt waters:
  - **June 15–April 14:** 11 inch minimum and 16 inch max: 2 per day, 2 in possession.
- In stocked lakes (see pages 88–89): 10 per day, 10 in possession.



### **ARCTIC CHAR/DOLLY VARDEN**

- 10 per day, 10 in possession.

### **ARCTIC GRAYLING**

- 10 per day, 10 in possession.

### **LINGCOD**

- **July 1–December 31:** 1 per day, 1 in possession, minimum 35 inches long with head attached, or 28 inches or greater in length with head removed.

### **ROCKFISH**

- 4 per day, 8 in possession, only 1 per day, 1 in possession may be nonpelagic.
- See the rockfish identification chart on page 92.



### **Attention PWS anglers:**

Beginning in 2020, anglers will be required to carry a deepwater release device onboard their vessel when sport fishing in Prince William Sound and will be required to use the device to release rockfish that are not harvested.

## HALIBUT

Pacific halibut fisheries are managed by the federal government under international treaty. See page 7 for federal contact information.

- **Season:** February 1–December 31.
- **Unguided anglers:** 2 per day, 4 in possession.
- Consult federal regulations for bag, possession and size limits and other regulations for guided (charter) anglers.
- **Filleting requirements for fish cleaned at sea:** No person shall possess on board a vessel, including charter vessels and pleasure craft used for fishing, Pacific halibut that have been filleted, mutilated, or otherwise disfigured in any manner, except that each Pacific halibut may be cut into no more than 2 ventral pieces, 2 dorsal pieces, and 2 cheek pieces, with a patch of skin on each piece, naturally attached.

## SPINY DOGFISH

- 5 per day, 5 in possession.

## SHARKS (EXCEPT SPINY DOGFISH)

- 1 per day, 1 in possession.
- There is an annual limit of 2 sharks. These harvested fish must be recorded. See page 5 for recording instructions.

## SHELLFISH

- See page 86.

## OTHER FINFISH

- No limit.

### Fresh Water Special Regulations - Prince William Sound

**Copper River Highway streams**— All fresh water drainages crossed by the Copper River Highway from and including Eyak River to the Million Dollar Bridge, including Clear Creek (Mile 42):

- **Salmon (except king salmon):** 3 per day, 3 in possession.
- **Coho salmon:** Open year-round.

*continued next column...*

- **August 15–September 15:** If you harvest a bag limit of coho salmon, you may not sport fish with bait for the rest of that day in these waters.
- A coho salmon that is removed from the water must be retained and becomes part of the daily bag limit of the person who originally hooked the fish. You must not remove a coho salmon from the water before releasing it.

### Clear Creek— Mile 42, Copper River Highway:

- Salmon (except king salmon) limits: 3 per day, 3 in possession.

### Eccles Creek (Whitshed Road):

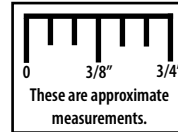
- **Closed year-round to all salmon fishing.**

### Eyak Lake—including tributaries:

- **Closed year-round to all salmon fishing.**

**Eyak River**—from a point 200 yards upstream from Eyak Lake dam to a point 200 yards downstream from the bridge at the outlet of Eyak Lake:

- **June 1–September 30:** Only single hook, artificial flies with a hook gap of  $\frac{3}{8}$  inch or less between point and shank are allowed. No additional weight may be attached to the line.
- Salmon (except king salmon) limits: 3 per day, 3 in possession.



### Fleming Spit Lagoon:

- See salt water Special Regulations on the next page for **Cordova Terminal harvest area**.

### Hartney Creek (upstream from Whitshed Road):

- **Closed year-round to all salmon fishing.**

### Ibeck Creek:

- **Upstream from ADF&G markers located approximately 3 miles upstream of the Copper River Highway bridge:**
  - **Closed year-round to all sport fishing.**

### Johnstone Bay fresh waters:

- Salmon (except king salmon) limits: 3 per day, 3 in possession, of which only 2 per day, 2 in possession may be coho (silver) salmon.

### Robe River and Robe Lake:

- **Upstream of the Richardson Highway (including Robe Lake):**
  - Open year-round to all species except salmon.
- **Downstream from Richardson Highway to ADF&G markers 300 feet downstream of its confluence with the Lowe River:**
  - Only one, unbaited artificial fly is allowed. See page 8 for legal gear description of “artificial fly”.
  - Salmon (except king salmon) limits: 3 per day, 3 in possession, of which only 1 per day, 1 in possession may be a sockeye salmon and only 1 per day, 1 in possession may be a coho (silver) salmon.
- **From the ADF&G markers 300 feet downstream of its confluence with the Lowe River:**
  - Open year-round to all species except salmon.

**Shelter Bay fresh waters**— all fresh waters draining into Shelter Bay:

- Salmon (except king salmon) limits: 6 per day, 12 in possession, of which only 1 per day, 1 in possession may be coho (silver) salmon.

### Solomon Gulch Creek:

- **Downstream from an ADF&G marker 300 feet downstream of the VFDA weir:**
  - Open to salmon fishing under the General Regulations for Prince William Sound on page 82.

**Valdez area fresh waters**—including all fresh waters draining into Port Valdez inside of a line from Allison Point to Mineral Creek, including Mineral Creek (except the Robe River and Solomon Gulch Creek):

- **Closed year-round to all salmon fishing.**

**Salt Water Special Regulations - PWS**

**Chenega Terminal Harvest Area**—all marine waters inside the entrance of Sawmill and Crab bays (Evans Island):

- Salmon (except king salmon) limits: 6 per day, 12 in possession, regardless of species.

**Cordova Terminal Harvest Area**—all marine waters north of a line from Odiak Slough to Stump Point, and south of a line from Orca Cannery to Knot Point, including the waters of Fleming Spit Lagoon:

- **Closed to snagging June 1 to September 30.**
- Salmon (except king salmon) limits: 6 per day, 12 in possession, regardless of species.

**Esther Island (Lake Bay):**

- Salt waters inside ADF&G markers 100 feet seaward of the Esther Island brood stock holding facility:
  - **Closed to all sport fishing year-round.**

**Main Bay:**

- Sport fishing from a vessel that is within 60 feet of the Prince William Sound Aquaculture hatchery barrier seine, or from a vessel that is anywhere inside the barrier seine is prohibited.

**Shelter Bay (Hinchinbrook Island):**

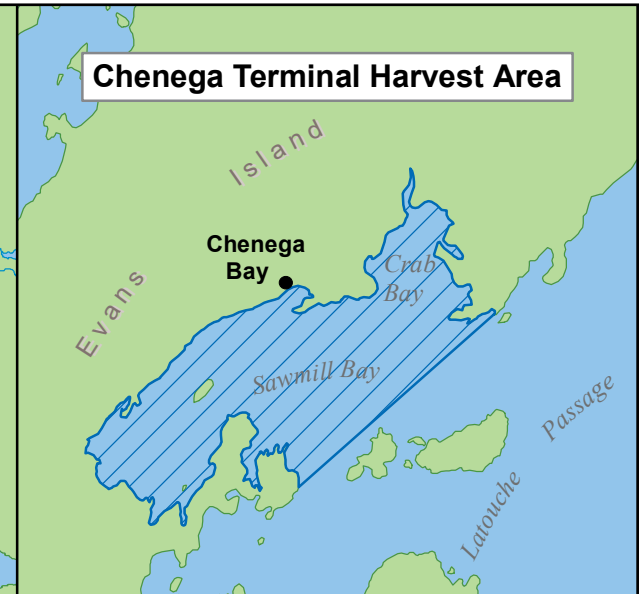
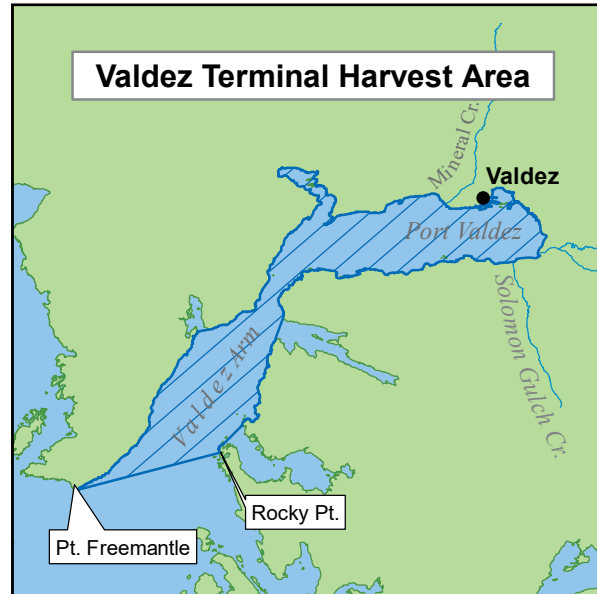
- Salmon (except king salmon) limits: 6 per day, 12 in possession, of which only 1 may be a coho (silver) salmon.

**Valdez Terminal Harvest Area**—all marine waters north of a line from Point Freemantle to Rocky Point, excluding Jack, Galena, and Sawmill bays:

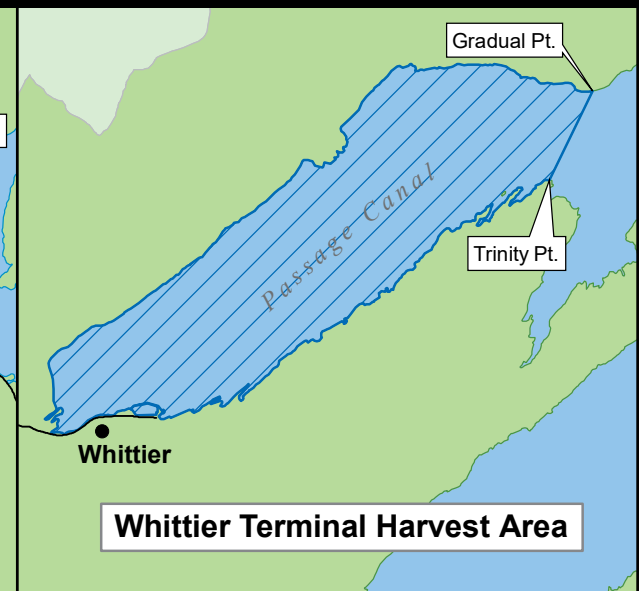
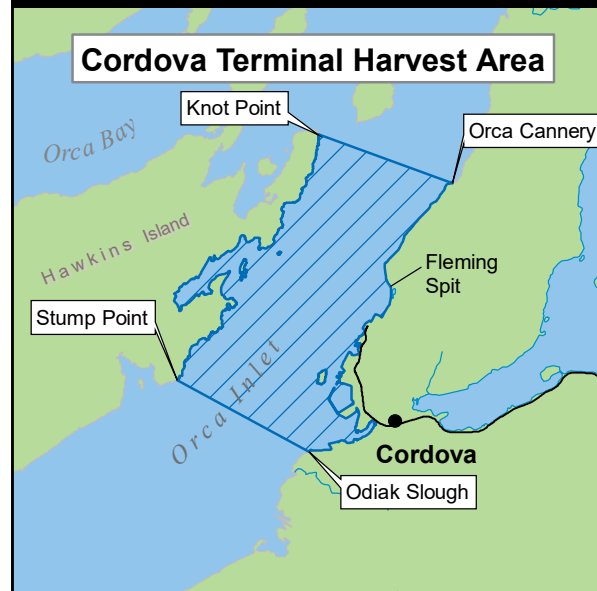
- Salmon (except king salmon) limits: 6 per day, 12 in possession, regardless of species.

**Whittier Terminal Harvest Area**—all marine waters west of a line from Trinity Point to Gradual Point:

- Salmon (except king salmon) limits: 6 per day, 12 in possession, regardless of species.
- **Whittier Small Boat Harbor:**
  - **Closed to snagging.**



**Prince William Sound Terminal Harvest Areas**



# Shrimp - Prince William Sound

## SHRIMP

You can report harvest online at: <http://fish.alaska.gov>

- **Season:** April 15 - September 15.
- **Permit:** A Prince William Sound shrimp permit is required (one per household). **Permits are only available online at:** [www.adfg.alaska.gov/store](http://www.adfg.alaska.gov/store)
  - Your permit must be in your possession while shrimping.
- **Open Waters:** All Prince William Sound. See map on page 82.
- **Gear:** Pots only. See page 86 for shrimp pot requirements.
  - 5 pots per person, maximum of 5 pots per vessel.
  - Check Emergency Orders prior to fishing as number of pots allowed could change.
  - Net mesh or rigid mesh pots are allowed.
- **Bag and Possession limits:** None.
- **Harvest Reporting Requirement:**
  - Shrimp harvest must be recorded in gallons of whole shrimp.
  - **Final season harvest report due by October 15**—even if you did not go shrimping.
  - You can report online at: <http://fish.alaska.gov>
  - Refer to the permit for recording requirements.

**Please report lost shrimp pots or shrimping gear to the Alaska Wildlife Troopers:**

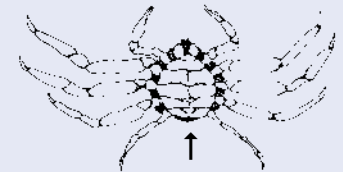
- Valdez AWT 907-835-4307
- Cordova AWT 907-424-3184
- Whittier AWT 907-352-5401

# Tanner Crab and Golden King Crab - PWS

## GOLDEN KING AND TANNER CRAB

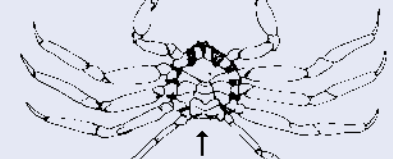
- **Subsistence golden king crab and Tanner crab— Only open to Alaska residents:**
  - **Season:** October 1–March 31.
  - **Permit:** A permit is required and is available at Anchorage and Cordova ADF&G offices, and the Department of Public Safety offices in Seward and Valdez.
  - **Open Waters:** See ADF&G website for waters open to subsistence crab fishing:  
<http://www.adfg.alaska.gov/index.cfm?adfg=ByAreaSubsistencePWS.fishingInfo>  
or call ADF&G Cordova at (907) 424-3212.
  - **Gear:** Gear is limited to 2 pots per person with a maximum of 2 pots per vessel.
  - **Bag and Possession limits:**
    - **Tanner Crab:** 12 legal-sized (5 inches or greater in carapace width) male Tanner crab per day, 12 in possession.
    - **Golden King Crab:** Annual household limit of 3 legal-sized (7 inches as measured in a straight-line distance across the carapace, including spines) male golden king crab per year.

Female - NO HARVEST ALLOWED

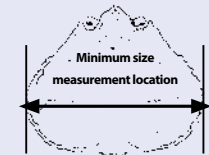


Wide abdominal flap covers most of underside (females usually smaller than 5½")

Male



Narrow abdominal flap



Width measurement of Tanner crab is the straight-line distance across the carapace, including spines.

## RAZOR CLAMS

- There are no bag or possession limits.
- **In waters east of 146° W. longitude and south of a line from the southernmost tip of Point Bentinck (Hinchinbrook Island) to the southernmost tip of Point Whittshed:**
  - A permit is required and is available at the Cordova ADF&G office.
  - Only razor clams 4½ inches or longer may be taken.

## LITTLENECK AND BUTTER CLAMS

- No minimum size limit for harvest, no bag or possession limit.

## DUNGENESS CRAB

- **Season: Closed.**

## OTHER SHELLFISH

- No limit.