

## General Regulations - Prince William Sound

**Inclusive waters:** All fresh waters draining into Prince William Sound from Cape Fairfield to Cape Suckling, excluding the Copper River drainage upstream of a line crossing the Copper River between the south bank of the confluence of Haley Creek and the south bank of the confluence of Canyon Creek in Wood's Canyon. Salt waters within 200 miles of shore from Cape Suckling to Cape Fairfield.

**In the freshwaters of Prince William Sound, only unbaited artificial lures or flies are allowed April 15-June 14.**

**The Fishing Season for all species is open year-round unless otherwise noted below.**

**Snagging:** Except for the Whittier Small Boat Harbor and the Cordova Terminal Harvest Area, snagging is legal year-round in Prince William Sound salt waters.

**Gaffs:** A gaff may not be used to puncture any fish intended or required to be released.

### **KING SALMON**

- No annual limit or recording requirement.
- Fresh waters:
  - 20 inches or longer: 2 per day, 4 in possession.
  - Less than 20 inches: 10 per day, 10 in possession.
- Salt waters:
  - 2 per day, 4 in possession, no size limit.

### **OTHER SALMON**

- Fresh waters:
  - 6 per day, 12 in possession, only 3 per day, 3 in possession maybe coho (silver) salmon.
- Salt waters:
  - Pink and chum salmon taken in a sport fishery maybe used as bait, but are part of your bag limit.
  - 6 per day, 12 in possession, only 3 per day, 3 in possession maybe coho (silver) salmon.

### **RAINBOW/STEELHEAD AND CUTTHROAT TROUT**

- In unstocked lakes and ponds, all flowing waters and in salt waters:
  - **Season:** June 15–April 14:
    - 11 inch minimum and 16 inch max: 2 per day, 2 in possession.
- In stocked lakes (see pages 86–87): 10 per day, 10 in possession.



### **ARCTIC CHAR/DOLLY VARDEN**

- 10 per day, 10 in possession.

### **ARCTIC GRAYLING**

- 10 per day, 10 in possession.

### **LINGCOD**

- **Season:** July 1–December 31:
  - **NEW** 1 per day, 1 in possession, minimum 35 inches long with head attached, or 28 inches or greater in length with head removed.

### **ROCKFISH**

- **NEW** 4 per day, 8 in possession, only 1 per day, 1 in possession may be non-pelagic.
- See the rockfish identification chart on page 92.

## Releasing a rockfish?

Use a deepwater release mechanism.

More information can be found on page 93.



## HALIBUT

Pacific halibut fisheries are managed by the federal government under international treaty. See page 7 for federal contact information.

- **Season:** February 1–December 31.
- **Unguided anglers:** 2 per day, 4 in possession.
- **Consult federal regulations for the following:**
  - 1) Bag, possession and size limits and other regulations for guided (charter) anglers.
  - 2) Filletting requirements for fish cleaned at sea.

## SPINY DOGFISH

- 5 per day, 5 in possession.

## SHARKS (EXCEPT SPINY DOGFISH)

- 1 per day, 1 in possession.
- There is an annual limit of 2 sharks. These harvested fish must be recorded. See page 5 for recording instructions.

## SHELLFISH

- See page 83.

## OTHER FINFISH

- No limit.

### Fresh Water Special Regulations - Prince William Sound

**Copper River Highway streams**— *All freshwater drainages crossed by the Copper River Highway from and including Eyak River to the Million Dollar Bridge, including Clear Creek (Mile 42):*

- **Salmon (except king salmon):** 3 per day, 3 in possession.
- **Coho salmon:** Open year-round.
  - August 15–September 15: After harvesting a bag limit of coho salmon, a person may not sport fish with bait for the rest of that day in these waters.
  - A coho salmon that is removed from the water must be retained and becomes part of the daily bag limit of the person who originally hooked the fish. A person may not remove a coho salmon from the water before releasing it.

**Clear Creek**— *Mile 42, Copper River Highway:*



**Salmon (except king salmon) limits: 3 per day, 3 in possession.**

**Eccles Creek** (*Whitshed Road*):

- **Closed year-round to all salmon fishing.**

**Eshamy Lake and Creek:**

- Sockeye salmon limits: 3 per day, 6 in possession.

**Eyak Lake**—*including tributaries:*

- **Closed year-round to all salmon fishing.**

**Eyak River**—*from a point 200 yd upstream from Eyak Lake dam to a point 200 yd downstream from the bridge at the outlet of Eyak Lake:*

- June 1–September 30, only single-hook, artificial flies with a hook gap of  $\frac{3}{8}$  inch or less between point and shank are allowed. No additional weight may be attached to the line.
- Salmon (except king salmon) limits: 3 per day, 3 in possession.

**Fleming Spit Lagoon:**

- See salt water special regulations on the next page for **Cordova Terminal harvest area**.

**Hartney Creek** (*upstream from Whitshed Road*):

- **Closed year-round to all salmon fishing.**

**Ibeck Creek:**

- **Upstream from ADF&G markers located approximately 3 miles upstream of the Copper River Highway bridge:**
  - **Closed year-round to all sport fishing.**

**Johnstone Bay fresh waters:**

- Salmon (except king salmon) limits: 3 per day, 3 in possession, of which only 2 per day/2 in possession may be coho (silver) salmon.

**Shelter Bay fresh waters**— *all fresh waters draining into Shelter Bay:*

- Salmon (except king salmon) limits: 6 per day, 12 in possession, of which only 1 per day, 1 in possession may be coho (silver) salmon.

**Valdez area fresh waters**—*including all fresh waters draining into Port Valdez inside of a line from Allison Point to Mineral Creek, including Mineral Creek (except the Robe River and Solomon Gulch Creek):*

- **Closed year-round to all salmon fishing.**

**Robe River:**

- **Downstream from Richardson Highway to ADF&G markers 300 feet downstream of its confluence with the Lowe River:**
  - Fly-fishing-only waters. See page 7 for legal gear description.
  - Salmon (except king salmon) limits: 3 per day, 3 in possession, of which only 1 per day, 1 in possession may be a sockeye salmon and only 1 per day, 1 in possession may be a coho (silver) salmon.

**Solomon Gulch Creek:**

- **Downstream from an ADF&G marker 300 feet downstream of the VFDA weir:**
  - Open to salmon fishing under the General Regulations for Prince William Sound on page 80.

**Chenega terminal harvest area**—*all marine waters inside the entrance of Sawmill and Crab bays (Evans Island):*

- Salmon (except king salmon) limits: 6 per day, 12 in possession, regardless of species.

**Salt Water Special Regulations - PWS**

**Cordova terminal harvest area**—all marine waters north of a line from Odiak Slough to Stump Point, and south of a line from Orca Cannery to Knot Point, including the waters of Fleming Spit Lagoon:

- **Closed to snagging June 1 to September 30.**
- Salmon (except king salmon) limits: 6 per day, 12 in possession, regardless of species.

**Esther Island (Lake Bay):**

- Salt waters inside ADF&G markers 100 ft seaward of the Esther Island brood stock holding facility:
  - **Closed to all sport fishing year-round.**

**Main Bay:**

- Sport fishing from a vessel that is within 60 feet of the Prince William Sound Aquaculture hatchery barrier seine, or from a vessel that is anywhere inside the barrier seine is prohibited.

**Shelter Bay (Hinchinbrook Island):**

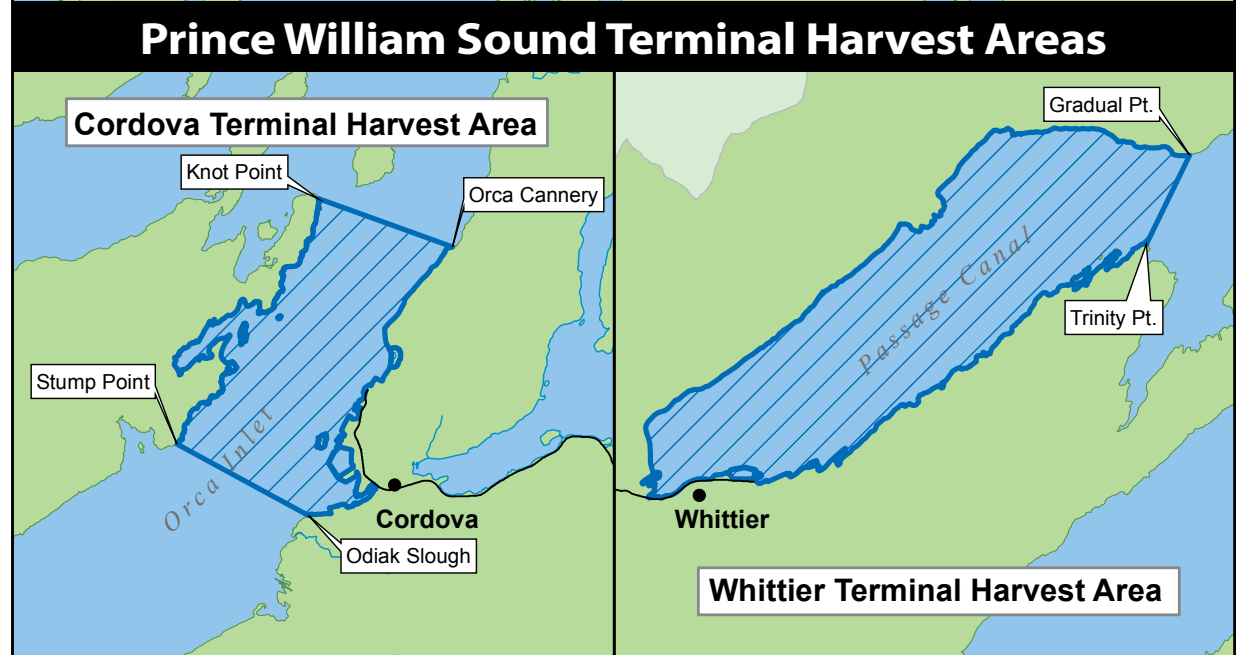
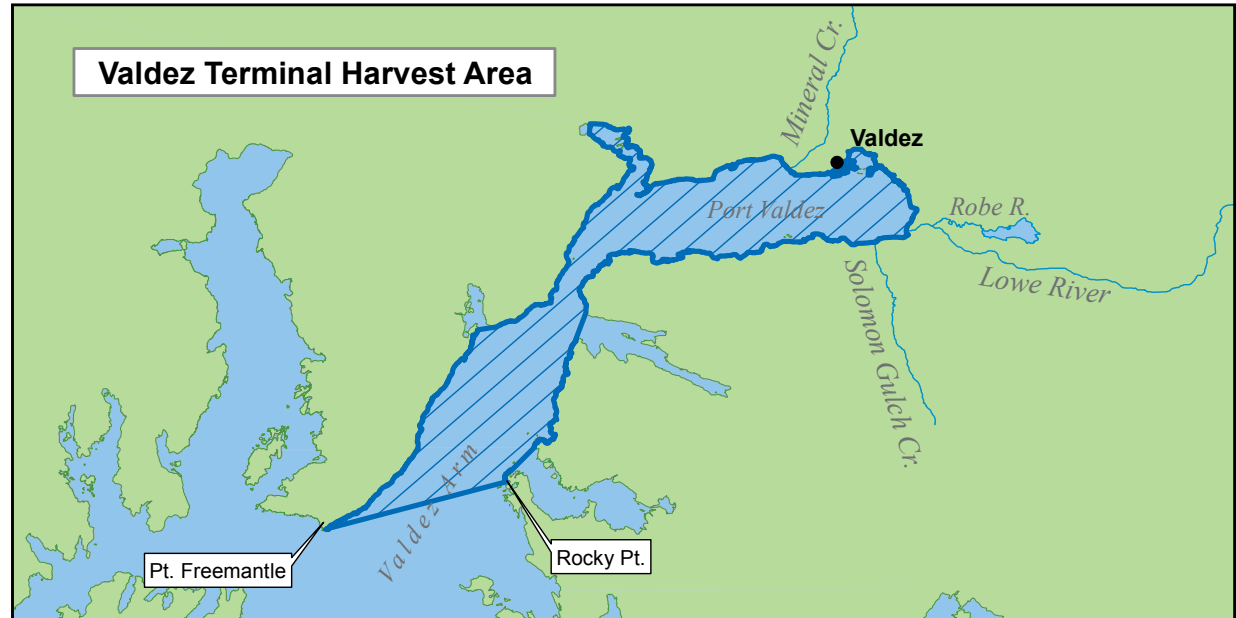
- Salmon (except king salmon) limits: 6 per day, 12 in possession, of which only 1 may be a coho (silver) salmon.

**Valdez terminal harvest area**— all marine waters north of a line from Point Freemantle to Rocky Point, excluding Jack, Galena, and Sawmill bays:

- Salmon (except king salmon) limits: 6 per day, 12 in possession, regardless of species.

**Whittier terminal harvest area**— all marine waters west of a line from Trinity Point to Gradual Point:

- Salmon (except king salmon) limits: 6 per day, 12 in possession, regardless of species.
- **Whittier Small Boat Harbor:**
  - **Closed to snagging.**



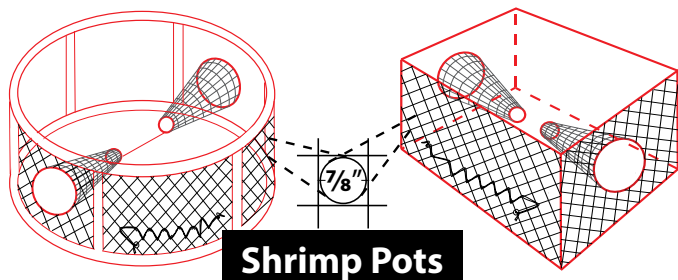
## Shrimp and Shrimp Pot Requirements - PWS

### SHRIMP

- **Season:** April 15–September 15:
  - **Per 2018 Emergency Order:** 4 pots per person, maximum of 4 pots per vessel.
- A permit is required (one per household). **Permits are only available online at:** [www.adfg.alaska.gov/store](http://www.adfg.alaska.gov/store)
  - There are no bag, possession, or size limits.

### Shrimp pot requirements:

- Two vertical sides of all shrimp pots must be made entirely of webbing big enough to allow a 7/8-inch round wooden dowel to go through without stretching or otherwise deforming the opening.
- The two vertical sides must touch each other and cannot be covered by anything.
- The other two sides, top, bottom, and tunnels may be composed of any material.
- The 7/8-inch size allows undersize and juvenile shrimp to escape.



A shrimp pot with no definable sides, such as a round pot, must have 50% of its vertical surface area covered with 7/8-inch webbing. The other 50% of its vertical sides, as well as its top and bottom, may be composed of any material

## Tanner Crab and Golden King Crab - PWS

### GOLDEN KING AND TANNER CRAB

- **Subsistence golden king crab and Tanner crab—Only open to Alaska residents:**
  - October 1–March 31.
  - A permit is required and is available at Anchorage and Cordova ADF&G offices, and the Department of Public Safety offices in Seward and Valdez.
  - Open Waters: See ADF&G website for waters open to subsistence crab fishing:

<http://www.adfg.alaska.gov/index.cfm?adfg=ByAreaSubsistencePWS.fishingInfo>

or call ADF&G Cordova at (907) 424-3212.

- Gear is limited to 2 pots per person with a maximum of 2 pots per vessel.

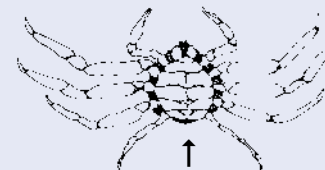
### TANNER CRAB

- 12 legal-sized (5 inches or greater in carapace width) male Tanner crab per day, 12 in possession.

### GOLDEN KING CRAB

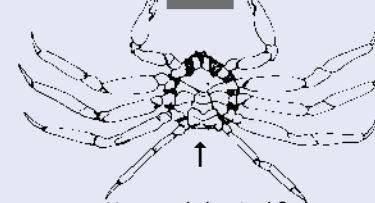
- Annual household limit of 3 legal-sized (7 inches as measured in a straight-line distance across the carapace, including spines) male golden king crab per year.

Female - NO HARVEST ALLOWED

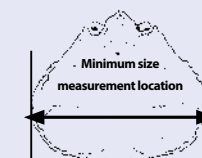


Wide abdominal flap covers most of underside (females usually smaller than 5½")

Male



Narrow abdominal flap



Width measurement of Tanner crab is the straight-line distance across the carapace, **including** spines.

### RAZOR CLAMS

- There are no bag or possession limits.
- **In waters east of 146° W. longitude and south of a line from the southernmost tip of Point Bentinck (Hinchinbrook Island) to the southernmost tip of Point Whittshed:**
  - A permit is required and is available at the Cordova ADF&G office.
  - Only razor clams 4½ inches or longer may be taken.

### LITTLENECK AND BUTTER CLAMS

- No minimum size limit for harvest, no bag or possession limit.

### DUNGENESS CRAB

- **Season: Closed.**

### OTHER SHELLFISH

- No limit.