

Division of Wildlife Conservation  
Ryan Scott, Director  
Region I – Southeast Alaska  
802 3rd Street  
Douglas, AK 99824-5412  
(907) 465-4265



Alaska Department of Fish and Game  
Doug Vincent-Lang, Commissioner  
PO Box 115526  
Juneau, AK 99811-5526  
[www.adfg.alaska.gov](http://www.adfg.alaska.gov)

## Advisory Announcement

*For Immediate Release: July 30, 2025*

# TAKHINSHA RANGE CLOSED TO MOUNTAIN GOAT HUNTING BETWEEN U.S./CANADA BORDER AND GARRISON GLACIER

(DOUGLAS)-Due to a decline in the number of goats observed during aerial surveys, the area bounded by the U.S./Canada border on the west, the Tsirku and Takhin Rivers on the north, the Kicking Horse River/Garrison Glacier on the east, and Glacier Bay National Park on the south (red bordered area on map below) is closed to mountain goat hunting. An emergency order (R1-4-25) has been issued to close the goat hunting season in this area at **11:59 pm on Thursday, July 31, 2025**.

Biologists conducted aerial surveys from 2016-2021 and documented the following goat counts: 63 goats (2016), 27 goats (2019), 29 goats (2020), and 28 goats (2021). There were 57% fewer goats observed in 2019 versus 2016. Due to the vulnerability of goats in this area, an emergency order is being issued.

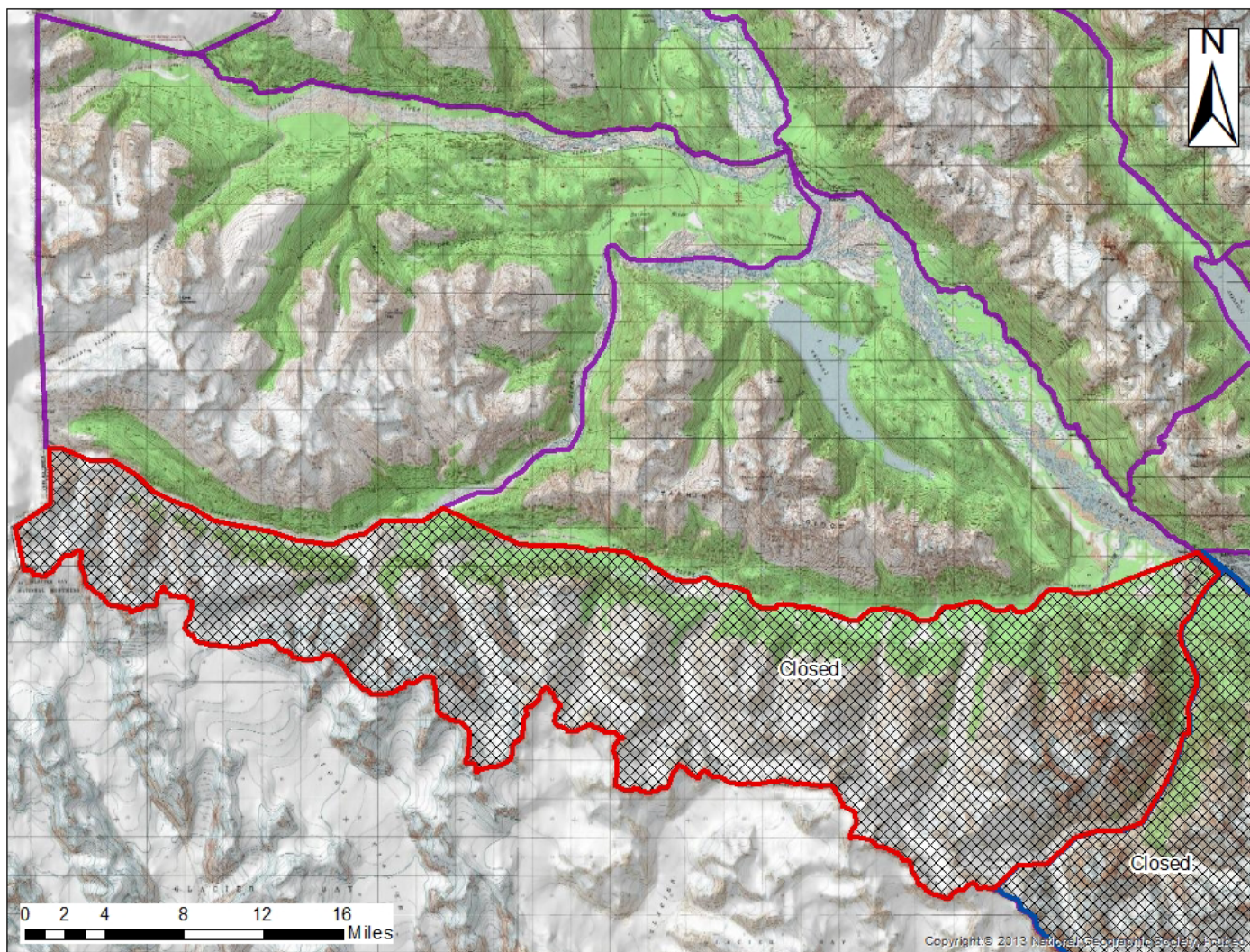
The remainder of Unit 1D mountain goat seasons are not affected by this emergency order.

Hunters with questions about goat hunting can contact Hannah Manninen in the Douglas Area Office at 907-465-4329.

**Division of Wildlife Conservation**  
**Ryan Scott, Director**  
**Region I – Southeast Alaska**  
802 3rd Street  
Douglas, AK 99824-5412  
(907) 465-4265



**Alaska Department of Fish and Game**  
**Doug Vincent-Lang, Commissioner**  
PO Box 115526  
Juneau, AK 99811-5526  
[www.adfg.alaska.gov](http://www.adfg.alaska.gov)



####