

ALASKA DEPARTMENT OF FISH AND GAME
DIVISION OF COMMERCIAL FISHERIES
NEWS RELEASE



Sam Cotten, Commissioner
Scott Kelley, Director



Contact: Pat Shields, Area Management Biologist;	Aaron Dupuis, Asst. Area Management Biologist
43961 Kalifornsky Beach Rd, Suite B	Soldotna, AK 99669
Phone: (907) 262-9368	Fax: (907) 262-4709
Date Issued: April 22, 2016	Time: 10:00 a.m.

UPPER COOK INLET COMMERCIAL FISHING ANNOUNCEMENT No. 1
EMERGENCY ORDER NUMBER 2S-01-16

Upper Cook Inlet Commercial Fishing Announcement No. 1 reduces the open fishing time in the Northern District directed king salmon commercial set gillnet fishery from twelve hours to six hours for the regularly scheduled fishing period on Monday, May 30, 2016. For this period only, fishing will be open from 7:00 a.m. until 1:00 p.m. The remaining three commercial fishing periods, occurring on Monday, June 6, 13, and 20, will be open from 7:00 a.m. until 7:00 p.m., unless modified by emergency order.

This commercial fishing announcement also closes commercial salmon fishing in that portion of the Northern District of Upper Cook Inlet from the wood chip dock located approximately at 61° 02.77' N. lat., 151° 10.04' W. long., to the Susitna River during the 2016 directed king salmon fishing season from May 25 through June 24 (Figure 1). All waters of the Northern District, including the closed waters identified in this announcement, will be open for the regular fishing season from 7:00 a.m. to 7:00 p.m. on Mondays and Thursdays, beginning on Monday, June 27, 2016.

Commercial fishermen participating in the Northern District directed king salmon fishery are reminded of the following provisions found in 5 AAC 21.366 *Northern District King Salmon Management Plan*. A permit holder may not operate more than one set gillnet at a time; no set gillnet may be set or operated within 1,200 feet of another set gillnet; and no permit holder may set a gillnet seaward of a set gillnet operated by another permit holder.

King salmon originating from the Chuitna River drainage remain a stock of management concern. As a result of this finding, the king salmon sport fishery in this drainage has been closed since the 2011 season. The *Northern District King Salmon Management Plan* (5 AAC 21.366) specifies that if the Chuitna River is closed to sport fishing, the commissioner shall close the commercial king

salmon fishery, by emergency order, from the wood chip dock to the Susitna River. This emergency order implements that mandatory closure.

There still remain stocks of concern designations and closures in effect on seven specific rivers in Northern Cook Inlet. The reduction in fishing time of the May 30 commercial fishing period is intended to provide additional escapement of king salmon in streams throughout the Northern District.

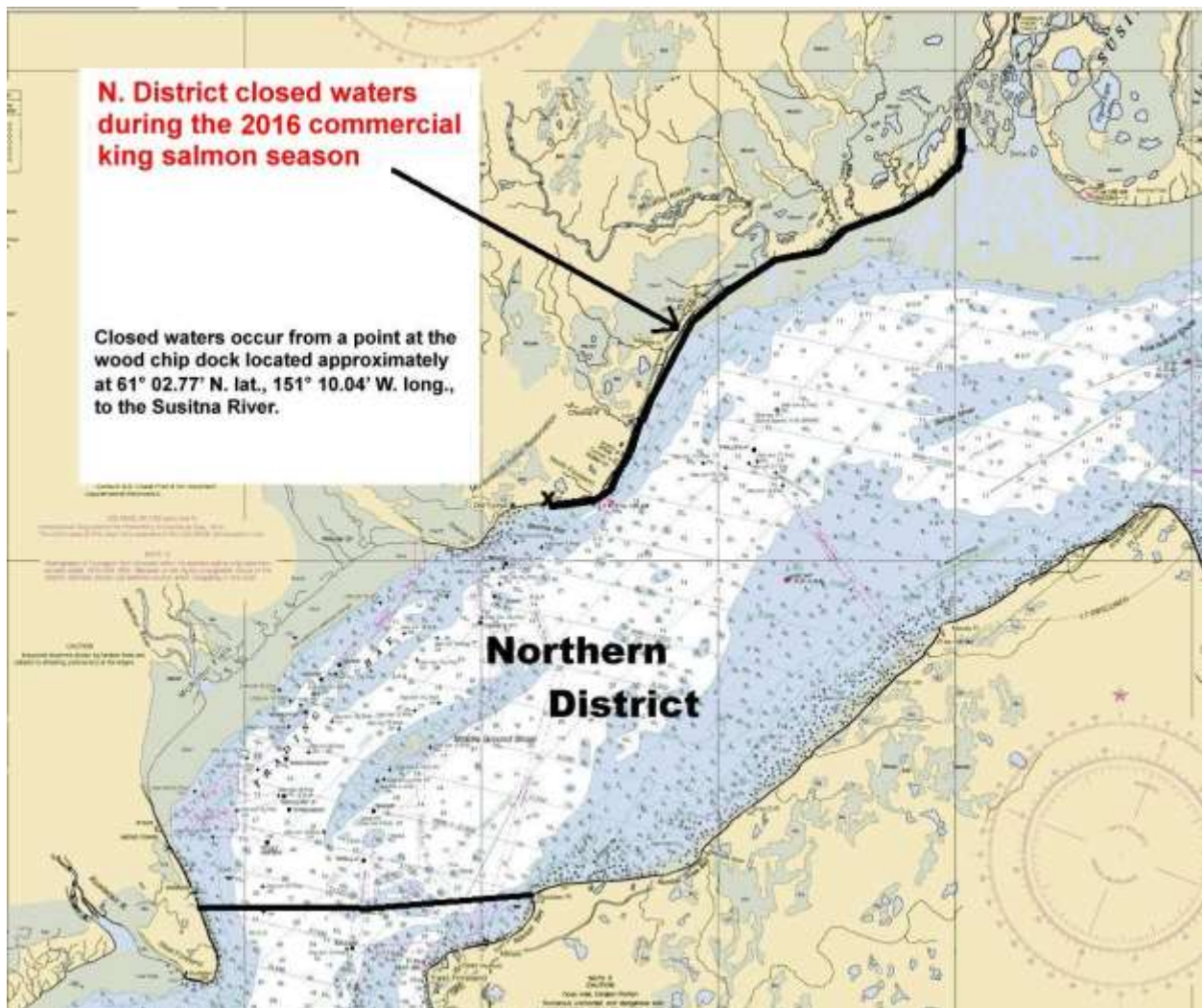


Figure 1.—Map of the area closed to commercial fishing during the 2016 Northern District set gillnet directed king salmon fishery.