



Advisory Announcement

Released: July 9, 2026

CONTACT:

Matt Olson, Area Management Biologist
907-949-1320 (Emmonak)
907-459-7274 (Fairbanks)

Toll free fishing schedule and counts: 1-866-479-7387

2026 Yukon River Salmon Fall Fishery Announcement #1 **Coastal District and Districts 1 Subsistence Fishing Schedule** **Emergency Order Number 3-S-FY-01-26**

Districts Affected: Lower Yukon Area

Lower Yukon Area districts will begin transitioning to fall season management on July 13. The Board of Fisheries officially designated fall chum salmon as a Stock of Management Concern at its most recent meeting and changed the start of the fall management season to begin three days earlier than normal. The transition will progress upriver based on historic fall chum salmon migration timing.

The 2026 fall chum salmon run size is anticipated to be well below average and the preseason projection based on the relationship between summer and fall chum salmon run sizes is for a run that is likely to be greater than 300,000 fish. Even with a run size within the escapement goal range (300,000–600,000 fish), Canadian treaty goals are not anticipated to be met. Therefore, directed subsistence fishing for fall chum salmon in the mainstem Yukon River is highly unlikely to occur. The 2026 coho salmon run is also projected to be below average and potential fishing opportunities will be based on inseason run abundance. Using a precautionary approach, subsistence fishing for fall chum and coho salmon will be closed at the start of the fall season. Nonsalmon subsistence fishing with 4-inch or smaller gillnets is being reduced to protect migrating salmon and will close during part of each week (see schedule below).

Subsistence Management Actions:

Coastal District and District 1 (from the Naskonat Peninsula north to Point Romanof which includes the Black River and the communities of Chevak, Hooper Bay, Scammon Bay, Emmonak, Nunam Iqua, Alakanuk, and Kotlik):

Currently, subsistence fishing is open 24 hours per day, 7 days per week with dip nets, beach seines, manned fish wheels, and hook and line gear for nonsalmon and chum, pink, and sockeye salmon. Chinook salmon must be released alive immediately from selective gear types.

Effective 12:01 a.m. Monday, July 13, subsistence fishing for fall chum and coho salmon will close.

Chinook, chum, and coho salmon must be released alive immediately from selective gear types.

Nonsalmon

4-inch or Smaller Mesh Gillnet Nonsalmon Opportunity Districtwide

The opportunity to harvest nonsalmon with 4-inch or smaller mesh set gillnets of 60-feet or shorter length is allowed in all waters of the Coastal District and District 1. Fishing with 4-inch or smaller mesh nets will be open on a weekly schedule from 12:00 p.m. noon Thursdays through 12:00 p.m. noon Sundays and will be closed for the remainder of the week. Nets are restricted to 60-feet or less in length and must be operated as a set net near shore. Gillnets cannot block more than ½ width of any waterway. Fishermen should fish this nonsalmon gear in

areas where resident species are more likely to be encountered than salmon (i.e. sloughs). Fishing with other nonsalmon gears, including manned fish wheel, hand line, longline, fyke net, dip net, and beach seine, is open 24 hours a day, 7 days per week. Chinook, chum, and coho salmon must be released alive from nonsalmon gear (other than 4-inch or smaller mesh gillnets).

Effective 12:01 a.m. Monday, July 13, 4-inch or smaller mesh gillnets must be removed from the water. Fishing with 4-inch or smaller mesh gillnets for nonsalmon will reopen from 12:00 p.m. noon Thursday, July 16 to 12:00 p.m. noon Sunday, July 19, and will remain on a weekly schedule from 12:00 p.m. noon Thursdays through 12:00 p.m. noon Sundays, until further notice.

6-inch or Smaller Mesh Gillnet Nonsalmon Opportunity in Designated Areas

Subsistence fishing for whitefish and other nonsalmon species with 6-inch or smaller mesh gillnets will be allowed in designated areas off the mainstem river where salmon are not known to be migrating or spawning. These areas were identified using local knowledge shared with management agencies and by using the Alaska Department of Fish and Game Anadromous Waters Catalog. Subsistence fishing for Chinook, chum, and coho salmon will close and whitefish subsistence fishing opportunity with 4-inch or smaller gillnets in the mainstem Yukon River will be reduced to protect migrating salmon. The designated areas for targeting whitefish and other nonsalmon species with 6-inch or smaller mesh set gillnets are listed below.

Effective 12:01 a.m. Monday, July 13, subsistence fishing with set gillnets will open in the rivers, sloughs, and lakes that are listed below and shown in the map (Figure 1), until further notice. Set gillnets are restricted to 6-inch or smaller mesh and 60-feet or shorter in length. This is to provide an opportunity to harvest whitefish and other nonsalmon species. Gillnets cannot block more than ½ width of any waterway.

The following coastal drainages are open using 6-inch or smaller mesh set gillnets for whitefish and other nonsalmon species only, **from 1 mile upstream of the mouth**. Nets must be set upstream of the coordinates listed below.

<i>Whitefish/Nonsalmon Area</i>	<i>Latitude</i>	<i>Longitude</i>
Aknerkochik River	61° 06.266' N	165° 07.183' W
Kealavik River	61° 01.117' N	164° 56.610' W
Kun River	61° 50.815' N	165° 35.352' W
Lithkealik River	61° 42.454' N	165° 51.656' W
Narokachik River	61° 04.180' N	164° 51.928' W
Ninglikfak River	61° 29.032' N	165° 43.468' W
Pastoliak River	63° 01.901' N	163° 14.931' W

The following areas are open using 6-inch or smaller mesh set gillnets for whitefish and other nonsalmon species only, **from 500-feet upstream of a closed area**. Nets must be set upstream of the coordinates listed below.

<i>Whitefish/Nonsalmon Area</i>	<i>Latitude</i>	<i>Longitude</i>
Acirrluar River upstream of the Pektotolik Slough confluence	62° 32.433' N	164° 07.024' W
Alarivik (Kaingulivik) River	62° 21.220' N	165° 10.525' W
Amigtuli River	62° 04.954' N	164° 56.119' W
Anakshek Pass	62° 15.893' N	164° 44.873' W
Angyartulleq River	62° 19.755' N	164° 48.893' W
Aterrlugliq River	62° 27.686' N	164° 00.944' W
Atraluguli River upstream of the Tunurokpak Channel confluence	62° 21.864' N	163° 57.327' W
Big River	61° 48.517' N	163° 25.312' W

<i>Whitefish/Nonsalmon Area</i>	<i>Latitude</i>	<i>Longitude</i>
Chaniliut (Chuilnak) Slough	63° 02.360' N	163° 24.265' W
Chelunginik River	61° 38.889' N	165° 23.863' W
Cilarsuinaq River	62° 34.246' N	163° 53.703' W
Ear River	61° 50.793' N	165° 28.194' W
Egkuqliq River	62° 25.364' N	164° 33.212' W
Elachik Slough	63° 02.008' N	163° 33.898' W
Equgpagtaalek River	62° 55.382' N	164° 16.162' W
Ikiituk River	62° 19.971' N	164° 47.110' W
Iqalluarvik River	62° 31.300' N	163° 50.814' W
Kangiar (Kanyak) River	62° 31.591' N	164° 57.498' W
Kanunuk Slough	63° 02.066' N	163° 34.622' W
Kaviaq River	62° 12.065' N	165° 03.642' W
Kayangulivik Slough	62° 21.235' N	165° 12.780' W
Keggluq River	62° 27.041' N	164° 34.550' W
Kiiqerciq River	62° 15.853' N	165° 02.254' W
Kotlik River	63° 01.900' N	163° 33.783' W
Kuiggaq River	62° 32.341' N	164° 46.795' W
Kuiggaq Slough	62° 40.270' N	163° 55.375' W
Kuimlill'er River	62° 19.871' N	164° 49.022' W
Kuttak River	61° 40.679' N	165° 34.982' W
Kwecharak River upstream of the Komoiarak Slough confluence	61° 38.684' N	165° 40.430' W
Lirumavik River	62° 07.656' N	164° 53.669' W
Maklacuartuli River	62° 11.300' N	164° 59.146' W
Manokinak River upstream of the Nungatak River confluence	61° 31.172' N	164° 23.095' W
Manumik River	62° 03.051' N	165° 00.256' W
Nantok River	61° 51.287' N	163° 51.381' W
Nanvaruq (Hamilton) Slough	62° 43.656' N	163° 56.290' W
Narullegarvik (Nagosakchowik) River	62° 31.594' N	164° 57.609' W
Neqlercurviar River	62° 34.289' N	164° 28.715' W
Neqlercurvik River	62° 34.178' N	164° 29.158' W
Paunrivik River	62° 28.823' N	164° 33.563' W
Pellaavik River	62° 16.427' N	164° 50.765' W
Pitmik River	61° 47.269' N	163° 38.005' W
Piyukenuk River	61° 37.887' N	165° 04.870' W
Qip'ngayagaq River	62° 20.019' N	165° 20.067' W
Qullirraq River	62° 17.651' N	164° 52.031' W
Talik River	61° 13.623' N	164° 38.899' W
Taqikarpak River	62° 36.341' N	164° 24.097' W
Tungpuk River	61° 52.146' N	165° 17.518' W
Tunuirun Pass	62° 14.913' N	164° 53.893' W
Uiqerreik Creek	62° 16.733' N	165° 02.042' W
Uqrarivik River	62° 43.634' N	164° 20.635' W

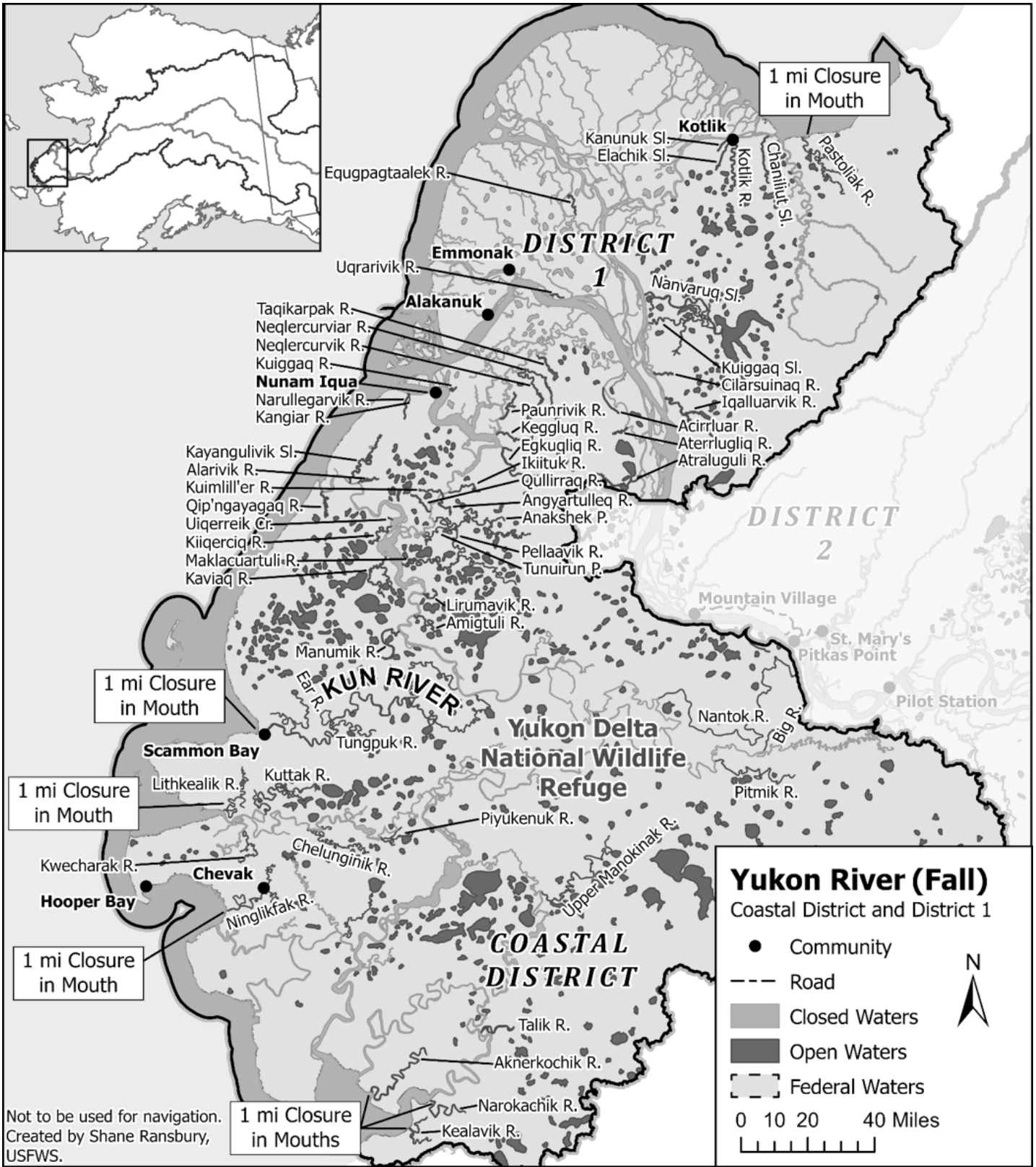


Figure 1.—For Coastal District and District 1, all labeled waterways and all lakes without a closed drainage flowing into them are open to 6-inch gillnets for non-salmon (dark gray). Rivers and sloughs that are open to 6-inch non-salmon fishing have a closure buffer from the mouth to 500 feet upstream. Rivers flowing into the coast have a longer buffer, from the mouth to 1-mile upstream. **The Yukon River mainstem remains closed to 6-inch mesh gillnets.** Areas that remain closed to 6-inch gillnets are not named but are shown in light gray.

If there are multiple names for a river or slough, please let us know by contacting the Alaska Department of Fish and Game in Emmonak (907-949-1320) or Fairbanks (907-459-7274). You can also contact the U.S. Fish and Wildlife Service at 907-334-5391 or 907-334-5389.

Federal Special Action

The Alaska Department of Fish and Game (ADF&G) and the U.S. Fish and Wildlife Service (USFWS) have coordinated on this advisory announcement. The USFWS Federal Inseason Manager has issued a separate Federal special action TSA 03-FC-01-26 with the same fishing schedule and restrictions for all users in waters adjacent to Federal Land. For additional information concerning Yukon River Federal Special Actions contact the USFWS Federal Yukon River Subsistence Fishery Manager, Holly Carroll; holly_carroll@fws.gov, (907) 351-3029 or Assistant Manager, Keith Herron; keith_herron@fws.gov, (907) 334-5391.



This is an announcement by the ADF&G in cooperation with the USFWS.

Federal Special Actions will be posted on www.doi.gov/subsistence/fisheries-special-actions and shared on Facebook at www.facebook.com/subsistencealaska.

ADF&G Advisory Announcements and fish counts can be obtained by visiting www.facebook.com/YukonRiverFishingADFG or www.adfg.alaska.gov/yukonfishcounts.

To receive advisory announcements by email, sign up at www.cfnews.adfg.alaska.gov.



-end-