



Advisory Announcement

For Immediate Release: June 10, 2026

CONTACT: Todd Johnson and Jeremy Botz
Finfish Area Management Biologists
(907) 424-3212

Prince William Sound Salmon Fishery Announcement #7

COPPER RIVER DISTRICT: The Copper River District, excluding waters north of a line from 60° 11.14' N., 144° 36.03' W. to 60° 12.34' N., 145° 09.97' W. to 60° 23.08' N., 146° 06.05' W. (see map in Figure 1), will open at 7:00 am on Thursday, June 11 for a 12-hour commercial drift gillnet fishing period. **Permit holders are advised that unscheduled announcements providing additional fishing opportunity based on Miles Lake sonar passage trends may occur at any time inseason.**

The subsistence fishery will be open concurrent in time and area with the Copper River District commercial fishery, including additional waters west of a line from 60° 17.88' N., 145° 38.40' W. to 60° 22.87' N., 145° 33.50' W. This Egg Island channel area is open to subsistence users only to provide access to sheltered inside waters for small boat subsistence users (see map in Figure 1). Additionally, waters of the Copper River District, excluding the expanded Chinook salmon inside closure area, will open to subsistence fishing from 6:00 am to 10:00 pm on all Saturdays from May 23 through October 31.

The grass bank marker line is defined in 5 AAC 24.350(1)(A) with the exception of this year's extension of the closure line across Little Softuk (see bold font below). This closure line is defined with the following points:

<i>Point</i>	<i>Latitude</i>	<i>Longitude</i>
Point Whitshed South	60° 26.49' N.	145° 52.86' W.
Alaganik Slough North	60° 24.65' N.	145° 36.70' W.
Pete Dahl East	60° 20.44' N.	145° 29.14' W.
West Kokenhenik	60° 14.88' N.	145° 10.01' W.
East "East Side"	60° 14.83' N.	145° 03.36' W.
Coffee Creek East	60° 14.19' N.	144° 58.01' W.
Charlie Mohr North	60° 15.15' N.	144° 56.43' W.
Martin River North	60° 15.29' N.	144° 52.52' W.
Strawberry Reef	60° 13.93' N.	144° 50.66' W.
Little Softuk	60° 13.16' N.	144° 41.38' W.

Waters north of this line, within sloughs, and in Boswell Bay within the bay (5 AAC 24.350 (1)(A)) are closed to commercial and subsistence salmon fishing during all periods.

Forecast, harvest, sonar apportionment, and fish wheels indicators of Chinook salmon abundance all suggest a potentially weak Copper River Chinook salmon run. Chinook salmon abundance in the commercial fishery peaks during the end of May through early June, and the commercial fishery is continuing to be managed conservatively to limit harvest. This management strategy is being implemented to ensure the achievement of the 21,000–31,000 Chinook salmon sustainable escapement goal while providing fishing opportunity on more abundant sockeye salmon.

Miles Lake Sonar project apportionment data (Figure 2) indicate that the 2026 cumulative count of large Chinook salmon is low for the date. The escapement goal was met in 4 out of the last 7 years. It is too early in the run timing to determine the likelihood of meeting the goal this year. The current trend in large Chinook salmon passage does not give a clear indication of count levels at the end of sonar operation.

Cumulative sonar count through 6/9 is 145,767 fish whereas 200,858 fish would be expected by this date based on historical timing applied to the 2026 inriver goal. The 0600 count for 6/10 is 2,271 fish. The cumulative commercial harvest to date is 3,930 Chinook and 209,836 sockeye salmon.

BERING RIVER DISTRICT: Bering River District, west of a longitude line at 144° 28.20' W., will open at 7:00 am on Thursday, June 11 for a 12-hour commercial drift gillnet fishing period.

COGHILL DISTRICT: The Coghill District, excluding the Esther Subdistrict and the WNH THA and SHA, will open to commercial drift gillnet harvest for a 36-hour fishing period starting at 8:00 am on Thursday, June 11. Preliminary harvest estimates from the 36-hour period that started on Monday, June 8 were 476 sockeye and 1,491 chum salmon with 33 deliveries reported.

PWSAC requests that the Esther Subdistrict remain closed for the entirety of this 36-hour commercial fishing period. Cost recovery harvests will commence at WNH as run entry and hatchery escapement warrants.

ESHAMY DISTRICT: The Eshamy District, excluding the Main Bay Subdistrict and MBH THA, SHA, and AGZ, will open to commercial gillnet harvest for a 36-hour period starting at 8:00 am on Thursday, June 11. Preliminary harvest estimates from the 36-hour period that started on Monday, June 8 were 21,300 sockeye and 3,641 chum salmon with 203 deliveries reported.

PWSAC recommends excluding waters of the Main Bay Subdistrict for the entirety of this 36-hour commercial fishing period

Copies of the regulation booklet, *2025-2028 Commercial Salmon Fishing Regulations for Prince William Sound*, are available in the Cordova ADFG office.

ALL buyers purchasing fish in the PWS Management Area are required to complete a Processor Registration Form. Contact the Cordova office for any questions regarding registration.

The next scheduled salmon fisheries announcement is anticipated to be at 2:00 pm Saturday, June 13.

Announcement recordings are available for gillnet fisheries at 907-424-7535 and seine fisheries at 907-424-7345. In addition, announcement recordings are available in Anchorage at 907-267-2843.

Additionally, announcements, inseason harvest data, and escapement data are available at the following web address: <http://www.adfg.alaska.gov/index.cfm?adfg=commercialbyareapws.main> (Prince William Sound and Copper River homepage).

Unless otherwise specified, all openings are clock openings based on Alaska Daylight Time, which is based on Coordinated Universal Time and may be obtained by calling 303-499-7111.

The department encourages commercial permit holders to renew their licenses early and to check their CFEC vessel registration stickers to make sure they are current.

The department also encourages permit holders to report observed violations to Wildlife Safeguard at 800-478-3377. Reports are anonymous and cash rewards may be paid for successful prosecution of violations.

Figure 1.- Copper River District Chinook salmon outside closure and subsistence only areas.

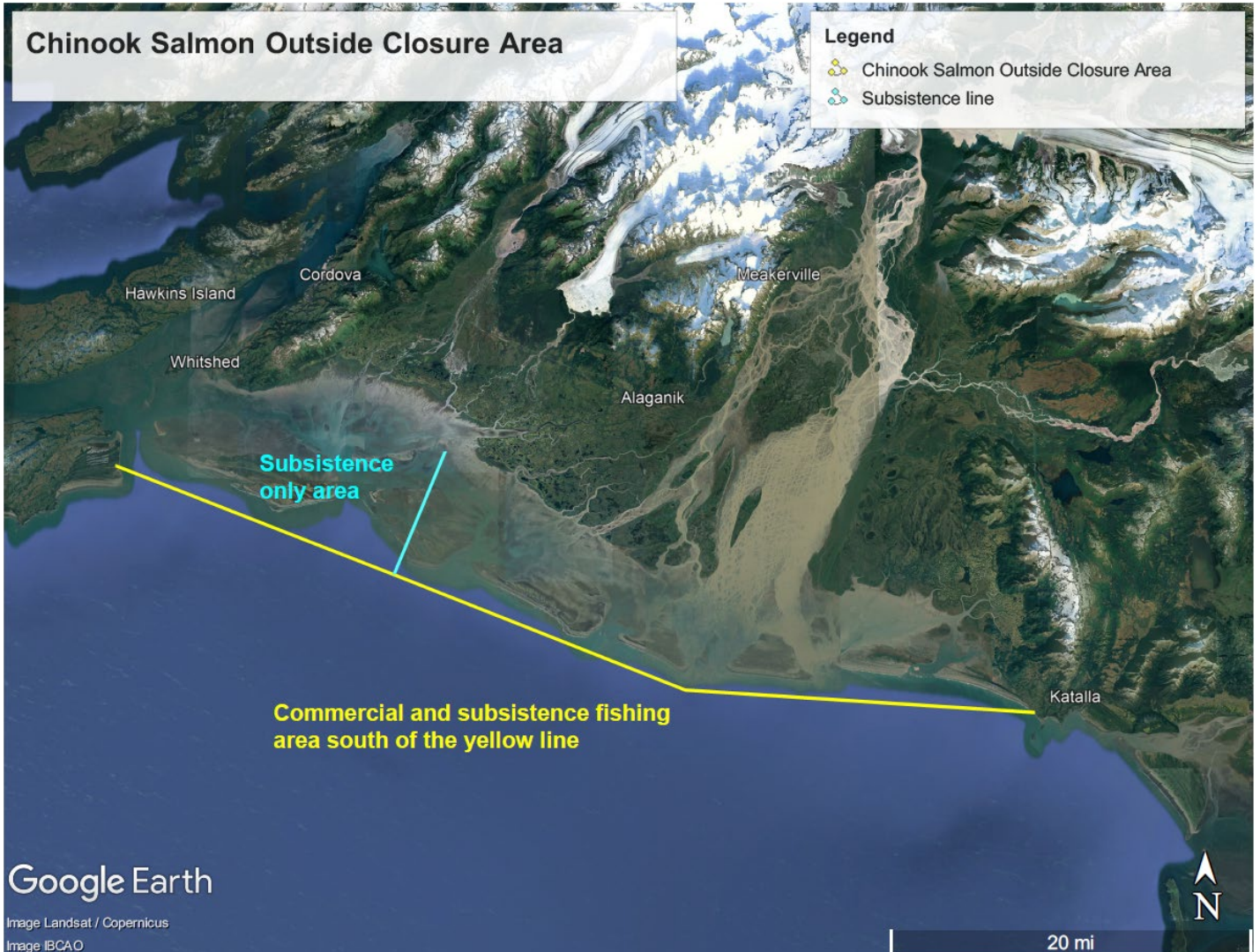


Figure 2.- Miles Lake Sonar large salmon apportionment, 2019-2026.

