



Advisory Announcement

For Immediate Release:

February 5, 2026

CONTACT:

Martin Schuster, Area Management Biologist

Andy Pollak, Asst. Area Management Biologist

(907) 235-8191

2026 Prince William Sound Area Commercial Shrimp Pot Fishery Closed **Emergency Order # 2-SF-E-01-26**

The Prince William Sound Area (PWS) commercial shrimp pot fishing season will not open in 2026. Alaska Department of Fish and Game (ADF&G) commercial and sport fisheries biologist and biometric staff will be hosting a town hall style meeting on February 12th at 7:00 p.m. via zoom to discuss survey results, refined modeling efforts and 2026 commercial and noncommercial fisheries. Please use the following link to access the meeting, which is open to all interested members of the public.

<https://us06web.zoom.us/j/88598601437>

Survey results indicate that the biomass of spot shrimp in PWS has been decreasing since 2020 in all three commercial management areas (Figures 1-3). During the 2024 survey there was a slight increase in spot shrimp catch per unit effort, however this increase did not continue through the 2025 survey.

Under new regulations adopted in 2025 the commercial and noncommercial fisheries open if spot shrimp biomass meets the following threshold levels:

- Commercial fishery: biomass \geq 40% of estimated carrying capacity, K (5 AAC 31.214);
- Noncommercial fisheries: biomass \geq 20% of estimated carrying capacity, K (5 AAC 55.055).

Estimated carrying capacity for PWS spot shrimp in 2026 was 3.07 million pounds (mlb) and estimated biomass was 1.11 mlb. Stock status in 2026 is 36% compared to 56% for 2025. The 2026 stock status does not meet the 40% threshold to open the commercial fishery.

For additional information, contact ADF&G in Homer at 907-235-8191.

-end-

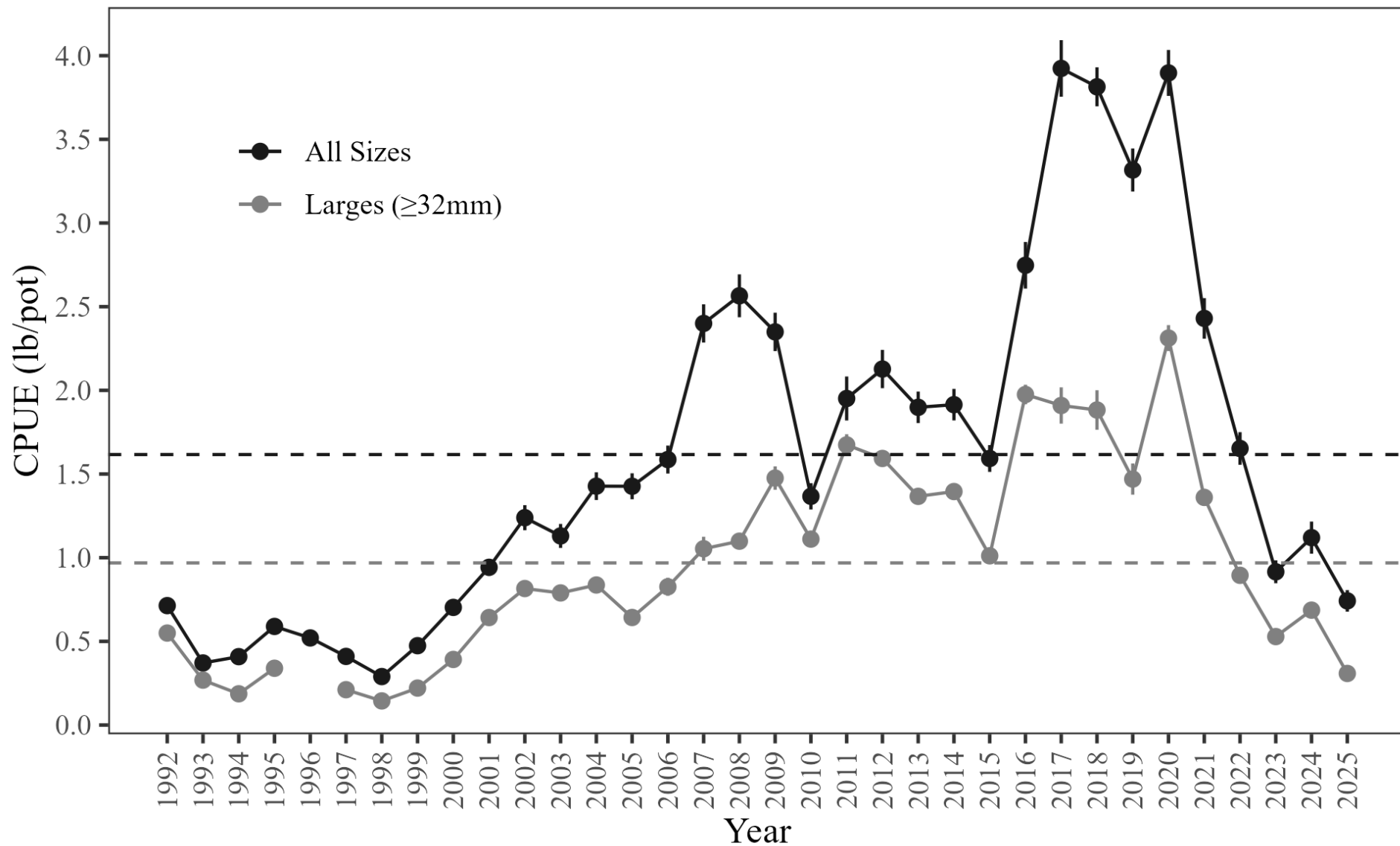


Figure 1.—Prince William Sound Area Shrimp Pot Survey catch per unit effort (CPUE) in pounds per pot for all commercial management areas combined, 1992-2025. Horizontal dashed lines represent average CPUE over the entire time series.

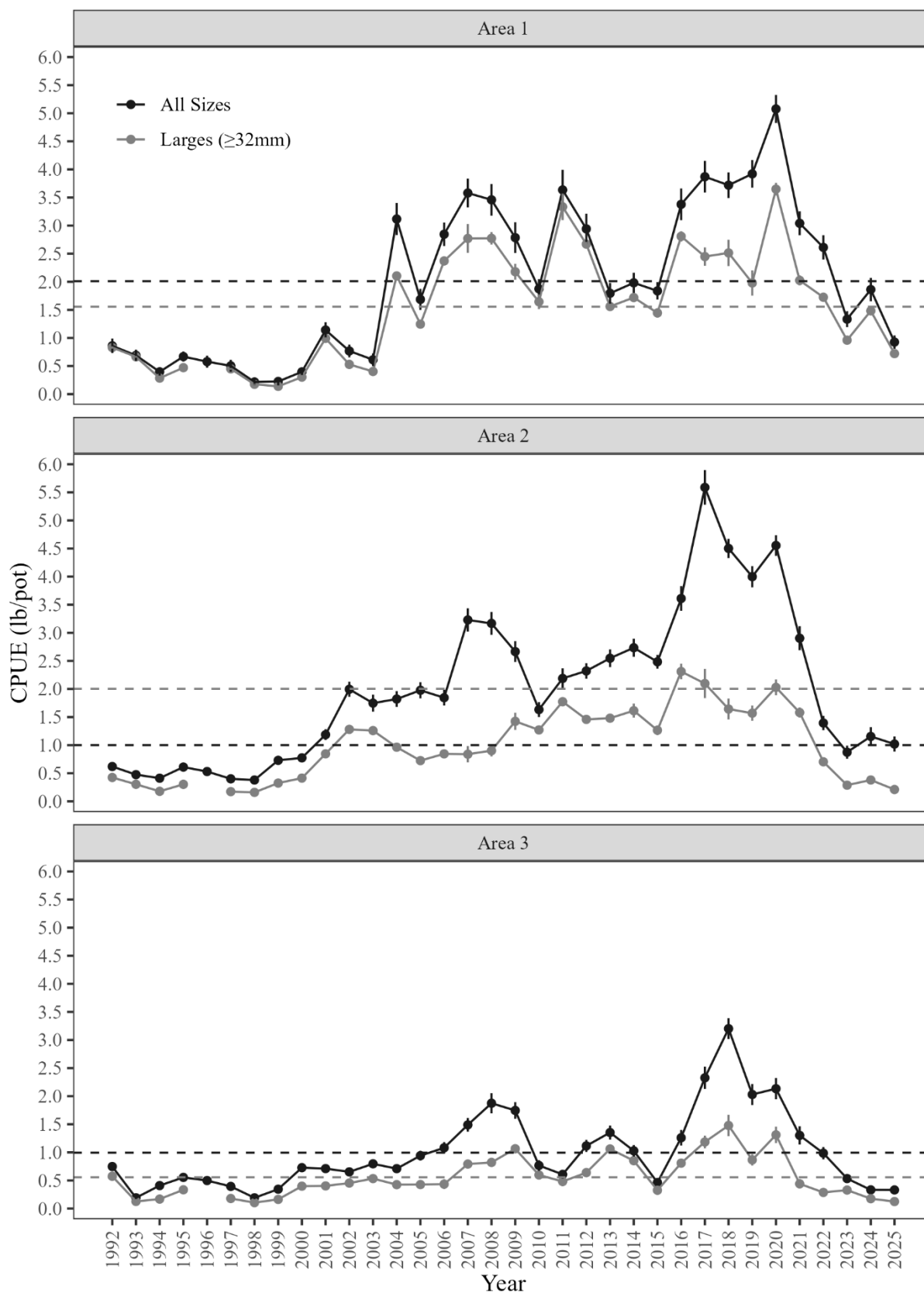


Figure 2.-Prince William Sound Area Shrimp Pot Survey catch per unit effort (CPUE) in pounds per pot by commercial management area, 1992-2025. Horizontal dashed lines represent average CPUE over the entire time series.

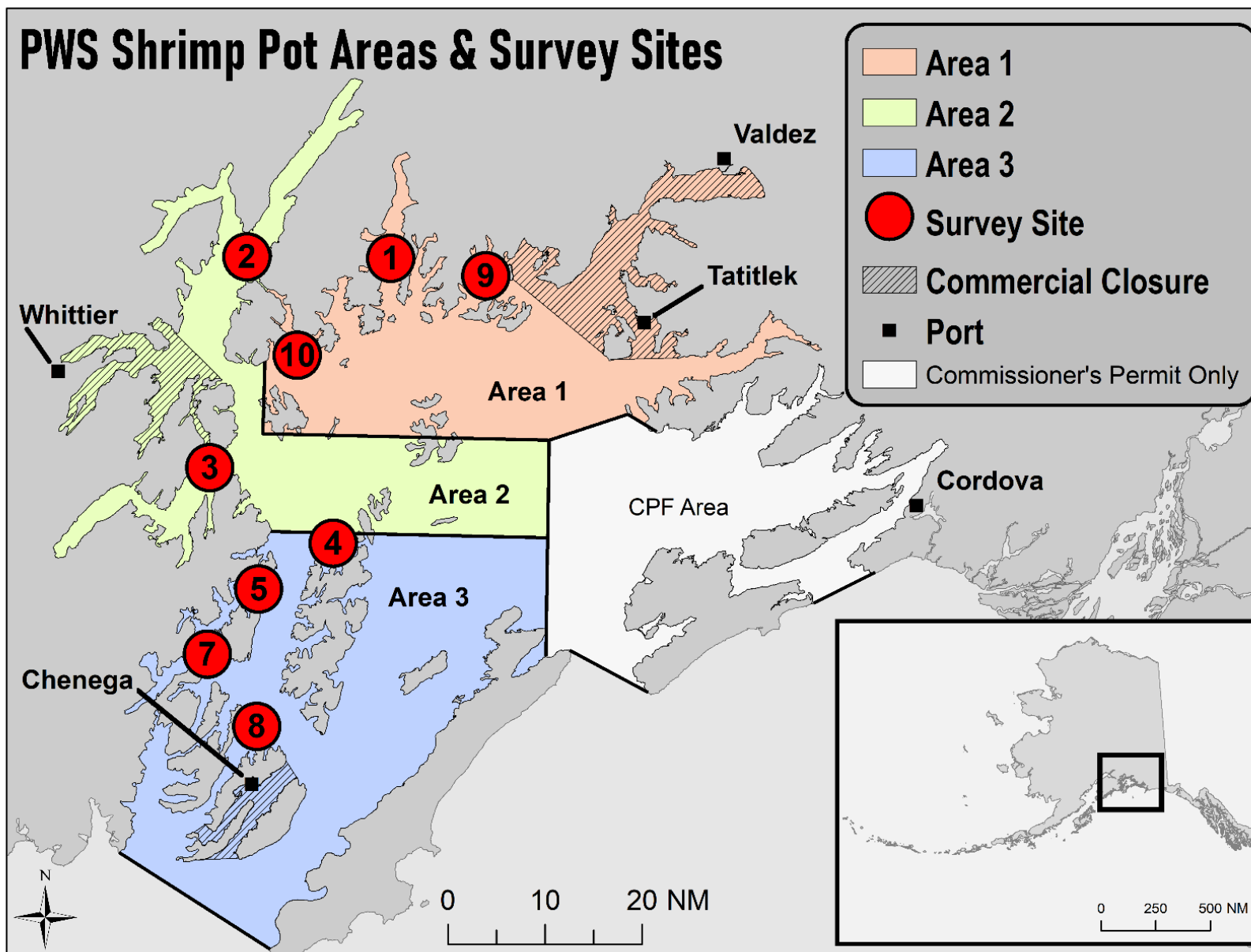


Figure 3.—Prince William Sound Area Shrimp Pot Survey stations and commercial management areas.