



Advisory Announcement
For Immediate Release: August 25, 2025

CONTACT:
Jeremy Botz and Heather Scannell
Finfish Area Management Biologists
(907) 424-3212

Prince William Sound Salmon Fishery Announcement #57

SEINE FISHERIES: PWSAC began its cost recovery sales program on July 27 and harvested approximately 91% of the assigned pink salmon revenue goal through August 22. Cost recovery fishing has been suspended at all facilities to begin broodstock recruitment, cost recovery may continue once brood is secured. Brood estimates at AFK, WNH, and CCH remain below what is needed and estimates of run entry at this time appear weak and additional conservative management measures are warranted.

VFDA began its egg take on August 4 and, as of August 22, anticipates being close to 70% complete towards the goal. Egg take continues today.

Preliminary harvest from the fishing periods occurring on August 24 are as follows:

- Eastern District: 62,000 pink salmon with 18 deliveries reported
- Coghill District: Confidential.
- Montague District: 38,900 pink salmon with 10 deliveries reported.
- Southeastern District: No reported harvest.

Contribution estimates from the Eastern District period occurring on August 24 were 6% AFK, 61% wild, 28% CCH, 2% WNH, and 3% SGH.

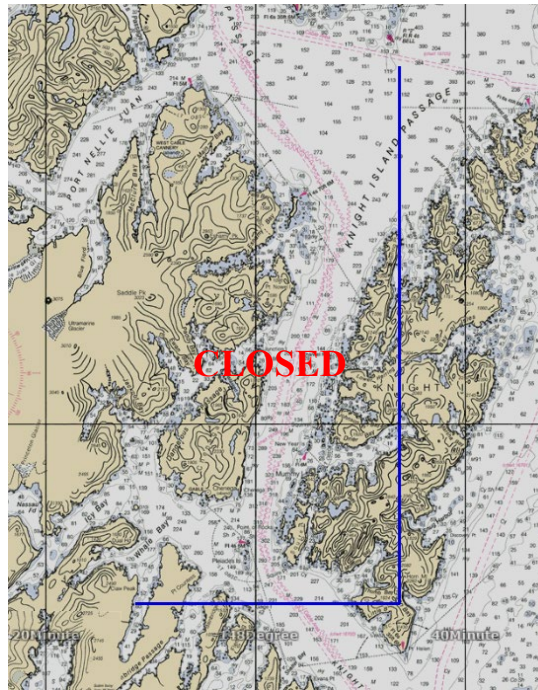
EASTERN DISTRICT: Waters of the Eastern District, south of a latitude of 60° 55.10' N, will open to commercial purse seine fishing for a 12-hour period, from 8:00 am until 8:00 pm, on Tuesday, August 26.

Waters of Valdez Arm will remain closed to minimize the incidental harvest of SGH-coho salmon.

NORTHERN DISTRICT: Waters of the Northern District, east of a longitude line at 147° 23.00' W., will open to commercial purse seine fishing for a 12-hour period, from 8:00 am until 8:00 pm, on Tuesday, August 26.

COGHILL DISTRICT: Waters of the Coghill District, excluding the Esther and Granite Bay Subdistricts and WNH THA and SHA, will open to commercial drift gillnet and purse seine fishing for a 12-hour period, from 8:00 am until 8:00 pm, on Tuesday, August 26.

SOUTHWESTERN DISTRICT: Waters of the Southwestern District, south of the latitude of 60° 11.50' N and east of Point Helen (147° 46.27' W.) and excluding waters of the Point Elrington and San Juan Subdistricts and waters of the AFK THA and SHA, will open to commercial purse seine fishing for a 12-hour period, from 8:00 am until 8:00 pm, on Tuesday, August 26.



MONTAGUE DISTRICT: Waters of the Montague District will open to commercial purse seine fishing for a 12-hour period, from 8:00 am until 8:00 pm, on Tuesday, August 26.

SOUTHEASTERN DISTRICT: Waters of the Southeastern District will open to commercial purse seine fishing for a 12-hour period, from 8:00 am until 8:00 pm, on Tuesday, August 26.

The next scheduled seine fisheries announcement is anticipated to be at 2:00 pm Wednesday, August 27.
The next scheduled gillnet fisheries announcement is anticipated to be at 2:00 pm Wednesday, August 27.

Announcement recordings are available for gillnet fisheries at 907-424-7535 and seine fisheries at 907-424-7345. In addition, announcement recordings are available in Anchorage at 907-267-2843.