



Advisory Announcement

Released: August 14, 2025

CONTACT:

Matt Olson, Area Management Biologist
907-949-1320 (Emmonak)
907-459-7274 (Fairbanks)
Toll free fishing schedule and counts:
1-866-479-7387

2025 Yukon River Salmon Fall Fishery Announcement #13 **District 4 and Koyukuk River Nonsalmon Subsistence Fishing Schedule**

Districts Affected: Upper Yukon Area

Subsistence fishing for whitefish and other nonsalmon species with 6-inch or smaller mesh gillnets will be allowed in designated areas off the mainstem river where salmon are not known to be migrating or spawning. These areas were identified using local knowledge shared with management agencies and by using the Alaska Department of Fish and Game Anadromous Waters Catalog. Subsistence fishing for fall chum and coho salmon remains closed and whitefish subsistence fishing opportunity with 4-inch or smaller gillnets and manned fish wheels in the mainstem Yukon River has been reduced to protect migrating salmon. The designated areas for targeting whitefish and other nonsalmon species with 6-inch or smaller mesh set gillnets are listed below.

Subsistence Management Actions:

District 4-A Lower, 4-A Upper, 4-B, 4-C, and the Koyukuk River (including Grayling, Anvik, Kaltag, Nulato, Koyukuk, Galena, Ruby, Huslia, Hughes, Allakaket, Alatna, Bettles, Wiseman, and Coldfoot):

Chinook, chum, and coho salmon fishing remains closed. Fishing for nonsalmon remains open 24 hours a day, seven days per week with nonlethal or selective gear types including hook and line with a rod or pole, dip net, beach seine, hand line, longline, and fyke net. Chinook, chum, and coho salmon must be released alive.

6-inch or Smaller Mesh Gillnet Nonsalmon Opportunity in Designated Areas

Effective 12:00 p.m. noon Sunday, August 17, subsistence fishing with set gillnets will open in the rivers, sloughs, and lakes without a closed drainage flowing into them that are listed below and shown in the map (Figures 1 and 2), until further notice. Set gillnets are restricted to 6-inch or smaller mesh and 60-feet or shorter in length. This is to provide an opportunity to harvest whitefish and other nonsalmon species. Gillnets cannot block more than ½ width of any waterway.

The following areas are open using 6-inch or smaller mesh set gillnets for whitefish and other nonsalmon species only, **from 500-feet upstream of the mouth**. Nets must be set upstream of the coordinates listed below.

| <i>Whitefish/Nonsalmon Area</i> | <i>Latitude</i> | <i>Longitude</i> |
|---|-----------------|------------------|
| Bear Creek (near Galena) | 64° 49.231' N | 157° 06.702' W |
| Bering Creek upstream of the Bering Slough confluence | 64° 57.888' N | 154° 07.776' W |
| Big Creek (near Ruby) | 64° 47.709' N | 155° 18.990' W |
| Bishop Creek upstream of the Pilot Mountain Slough confluence | 64° 44.588' N | 157° 18.482' W |
| Deer Creek upstream of the Ninemile Slough confluence | 64° 49.443' N | 155° 11.397' W |
| Dulbi Slough | 65° 26.685' N | 156° 18.577' W |
| Gohn Creek | 64° 38.924' N | 156° 25.519' W |
| Hodegaden Creek | 64° 58.184' N | 157° 34.094' W |
| JR Slough | 65° 01.747' N | 157° 20.231' W |
| Junekaket Creek | 64° 53.731' N | 154° 48.151' W |
| Klatsuta River | 65° 02.958' N | 153° 49.181' W |
| Main Creek (tributary to Ruby Slough) | 64° 42.667' N | 155° 52.710' W |
| Natlaratlen River | 65° 02.324' N | 157° 10.588' W |
| Nayuka River | 65° 38.327' N | 155° 57.396' W |
| Nikolai Slough | 65° 00.615' N | 157° 22.240' W |
| Papa Willie Creek upstream of the Yokontoh Slough confluence | 63° 22.929' N | 159° 22.715' W |
| Saint Joe Creek | 63° 13.967' N | 159° 41.692' W |
| Soonkakak River | 64° 42.655' N | 158° 02.441' W |
| Squirrel Creek | 64° 45.891' N | 157° 55.080' W |
| Twin Slough | 64° 53.620' N | 154° 48.295' W |
| Whakatna Creek | 64° 52.404' N | 156° 58.601' W |
| Yankee Slough | 63° 14.806' N | 159° 40.914' W |

If there are multiple names for a river or slough, please let us know by contacting the Alaska Department of Fish and Game in Emmonak (907-949-1320) until August 25 or Fairbanks (907-459-7274). You can also contact the U.S. Fish and Wildlife Service at 907-334-5391 or 907-334-5389.

-see map on next page-

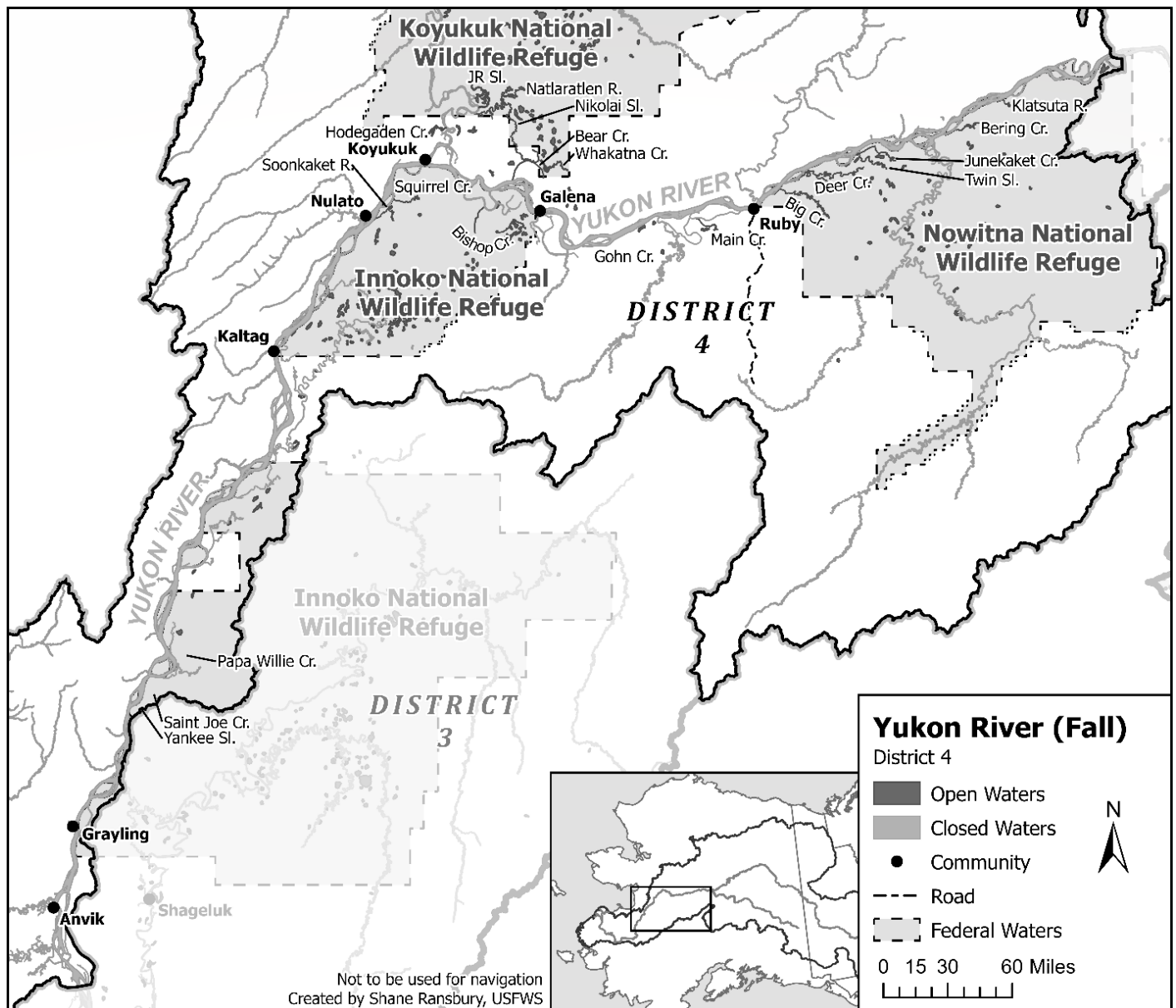


Figure 1.—For District 4, all labeled waterways and all lakes without a closed drainage flowing into them are open to 6-inch set gillnets for nonsalmon (dark gray). Rivers and sloughs that are open to 6-inch nonsalmon fishing (dark grey) have a closure buffer from the mouth to 500 feet upstream of closed areas. **The Yukon River mainstem remains closed to 6-inch mesh gillnets.** Areas that remain closed to 6-inch set gillnets are not named but are shown in light gray.

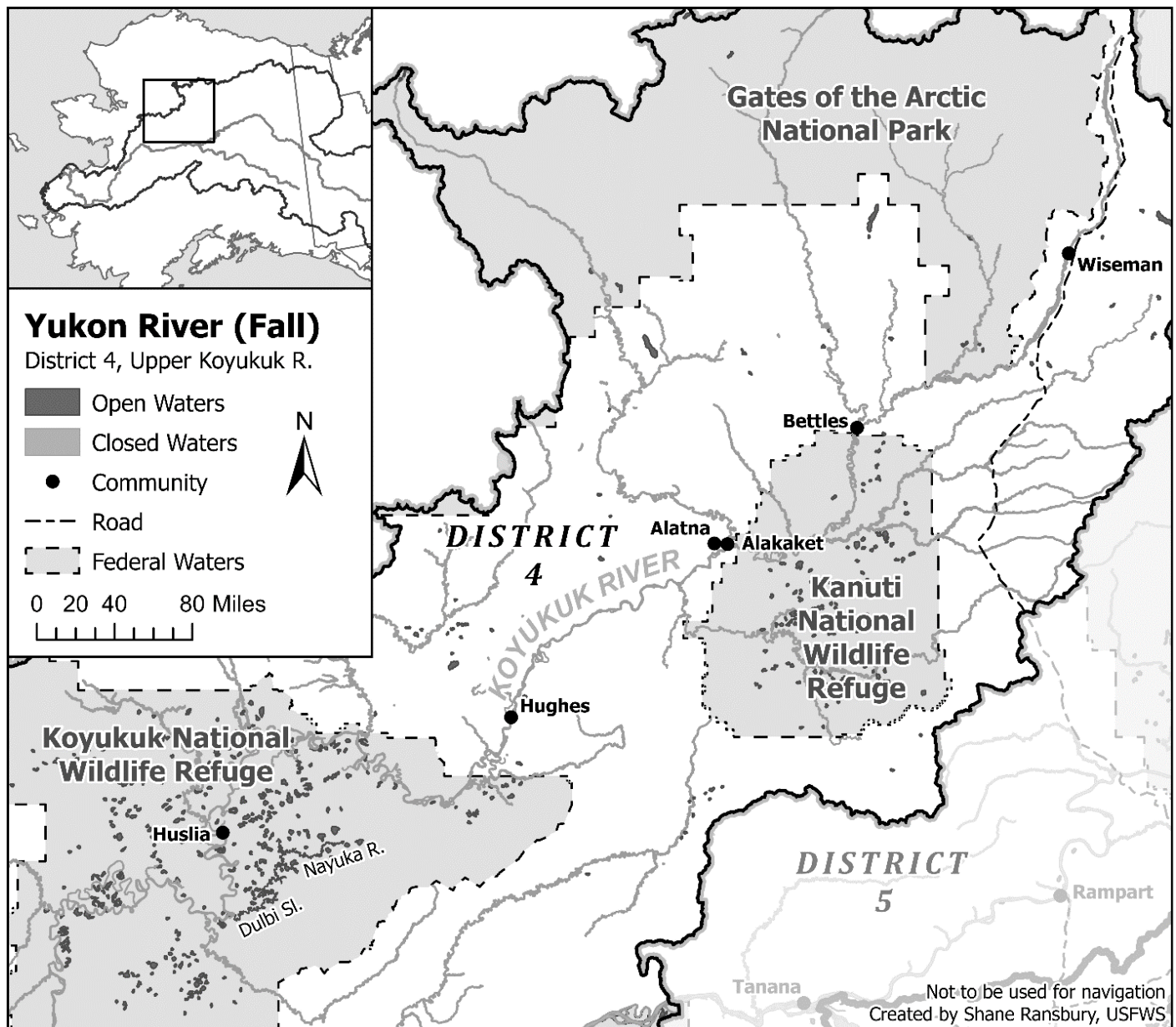


Figure 2.—For the Upper Koyukuk River, all labeled waterways and all lakes without a closed drainage flowing into them are open to 6-inch set gillnets for nonsalmon (dark gray). Rivers and sloughs that are open to 6-inch nonsalmon fishing (dark grey) have a closure buffer from the mouth to 500 feet upstream of closed areas. **The Koyukuk River mainstem remains closed to 6-inch mesh gillnets.** Areas that remain closed to 6-inch set gillnets are not named but are shown in light gray.

4-inch or Smaller Mesh Gillnet Nonsalmon Opportunity Districtwide

As previously announced, the opportunity to harvest nonsalmon with 4-inch or smaller mesh set gillnets of 60-feet or shorter length and manned fish wheels is allowed in all waters of District 4 and the Koyukuk River outside the subsistence permit area on a weekly schedule. Gillnets of 4-inch or smaller mesh and manned fish wheels may be used to target nonsalmon from noon Thursdays, through noon Sundays, until further notice. Nets are restricted to 60-feet or less in length and must be operated as a set net near shore. Gillnets cannot block more than $\frac{1}{2}$ width of any waterway. Fishermen should fish this nonsalmon gear in areas where resident species are more likely to be encountered than salmon. Fishing with other nonsalmon gears, including hand

line, longline, fyke net, dip net, and beach seine, is open 24 hours a day, 7 days per week. Chinook, chum, and coho salmon must be released alive from nonsalmon gear (other than 4-inch or smaller mesh gillnets).

A subsistence fishing permit is required for all species in the South and Middle forks of the Koyukuk River above Bettles, including the community of Wiseman, and Coldfoot. Gillnet gear in this permit area may only be used from August 20 to June 30 and must be 3½ inches or smaller mesh size. If you are outside the permit area, contact the Fairbanks office at 907-459-7274 for a subsistence harvest calendar.

Federal Special Action

The Alaska Department of Fish and Game (ADF&G) and the U.S. Fish and Wildlife Service (USFWS) have coordinated on this advisory announcement. The USFWS Federal Inseason Manager has issued a separate Federal special action FSA 2-FC-09-25 with the same fishing schedule and restrictions for all users in waters adjacent to Federal Land. To reach the USFWS Yukon River Subsistence Fishery Manager, call Holly Carroll at 907-351-3029.



This is an announcement by the ADF&G in cooperation with the USFWS.

Federal Special Actions will be posted on www.doi.gov/subsistence/fisheries-special-actions and shared on Facebook at www.facebook.com/subsistencealaska.

ADF&G Advisory Announcements and fish counts can be obtained by visiting www.facebook.com/YukonRiverFishingADFG or www.adfg.alaska.gov/yukonfishcounts. To receive advisory announcements by email, sign up at www.cfnews.adfg.alaska.gov.



-end-