



## Advisory Announcement

*For Immediate Release: July 22, 2025*

**CONTACT:**  
**Jeremy Botz and Heather Scannell**  
**Finfish Area Management Biologists**  
**(907) 424-3212**

### Prince William Sound Salmon Fishery Announcement #35

**SEINE FISHERIES:** VFDA completed cost recovery on July 14 and has started broodstock recruitment. Continued run entry into Valdez Arm, Narrows, and Port warrants additional fishing pressure on SGH pink salmon.

Pink salmon run entry into PWSAC facilities has improved, and PWSAC has recommended that THA and SHAs remain closed to start building fish for cost recovery.

An aerial survey of the Southeastern District was flown yesterday, July 21, and an aerial survey of the Montague and Southwestern Districts is being flown today, July 22. Wild escapement indices are within expected ranges for this date. The SGH pink salmon and wild pink salmon return cannot sustain the same fishing pressure. Time and area may be adjusted based on escapement indices, effort, and harvest to target wild stocks on a regular schedule.

**EASTERN DISTRICT:** Waters of the Eastern District will open to commercial purse seine fishing for a 14-hour period, from 6:00 am until 8:00 pm, on Wednesday, July 23. **Waters of Port Valdez east of a longitude of 146° 34.00' W. will be CLOSED to commercial fishing during this period.** Regulatory closed waters and anadromous stream closures north of a line from Potato Point to Entrance Point will not be in effect during this fishing period.

The preliminary harvest estimate for Monday, July 21, was 1.37 million pink salmon, with 180 deliveries reported.

**Waters inside the following Eastern District Salmon Harvest Task Force (SHTF) markers will be closed to commercial fishing during this period to ensure early season escapement:**

- (1) **Jack Bay:** south and east of a line from a shore marker at approximately 61°02.34' N. lat., 146°35.27' W. long. to a shore marker at approximately 61°02.17' N. lat., 146°39.77' W. long.;
- (2) **Sawmill Bay:** north of a line from a shore marker at approximately 61°02.71' N. lat., 146°46.44' W. long. to a shore marker at approximately 61°02.58' N. lat., 146°47.07' W. long.
- (3) **Galena Bay:** east of a line from a shore marker at approximately 60°56.87' N. lat., 146°39.87' W. long. to a shore marker at approximately 60°56.55' N. lat., 146°39.65' W. long.;
- (4) **Landlocked Bay:** waters north of 60°50.76' N. lat.;
- (5) **Irish Cove:** south of a line from a shore marker at approximately 60°46.73' N. lat., 146°26.62' W. long. to a shore marker at approximately 60°46.27' N. lat., 146°27.12' W. long.;
- (6) **Port Fidalgo Subdistrict:** waters east of 146°24.12' W. long.
- (7) **St. Matthews Bay:** north of a line from a shore marker at approximately 60°43.36' N. lat., 146°19.07' W. long. to a shore maker at approximately 60°43.61' N. lat., 146°21.17' W. long.;

- (8) **Olsen Bay**: north of a line from a shore marker at approximately 60°43.46' N. lat., 146°10.14' W. long. to a shore marker at approximately 60°43.21' N. lat., 146°13.97' W. long.;
- (9) **Beartrap Bay**: north of a line from a shore marker at approximately 60°45.13' N. lat., 146°06.12' W. long. to a shore marker at approximately 60°44.51' N. lat., 146°04.57' W. long.; **this includes all waters of Port Gravina and Beartrap Bay inside of this line;**

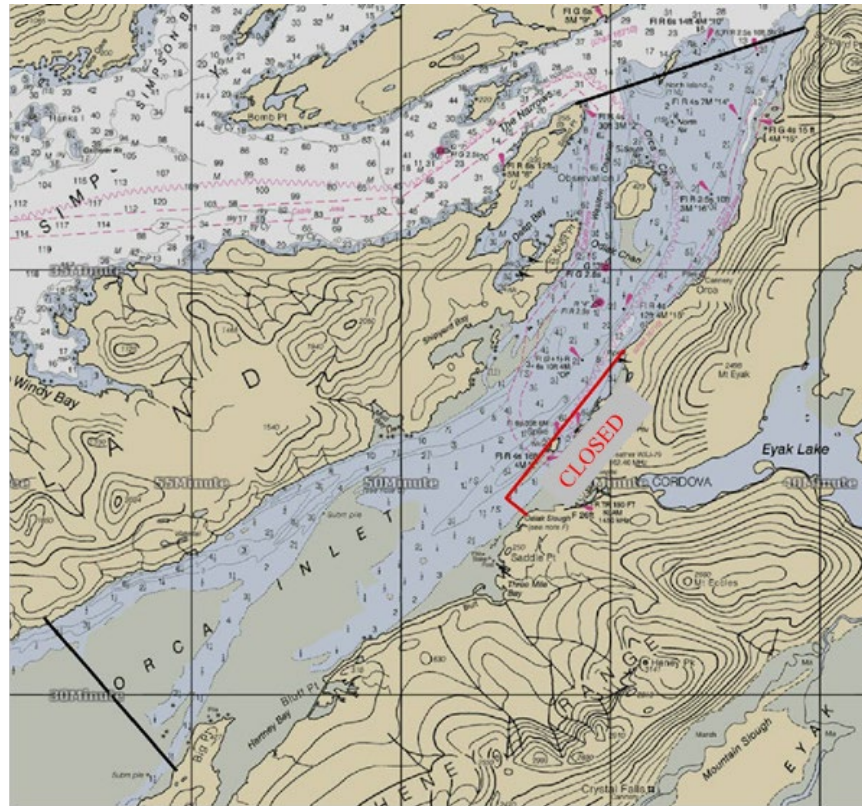
**NORTHERN DISTRICT:** Waters of the Northern District, excluding the CCH Subdistrict and CCH THA and SHA, will open to commercial purse seine fishing for a 14-hour period, from 6:00 am until 8:00 pm, on Wednesday, July 23.

**Waters inside of the following Northern District Salmon Harvest Task Force (SHTF) markers will be closed for this period to ensure early season escapement. Waters closed for this period include the following areas:**

- (1) **Eaglek Bay**: north of a line from a shore marker at approximately 60°50.66' N. lat., 147°40.27' W. long. to a shore marker at approximately 60°50.56' N. lat., 147°44.57' W. long.;
- (2) **Cedar Bay**: north of a line from a shore marker at approximately 60°56.46' N. lat., 147°27.03' W. long. to a shore marker at approximately 60°56.03' N. lat., 147°26.39' W. long.;

**NORTHWESTERN DISTRICT:** Waters of the Northwestern District will open to commercial purse seine fishing for a 14-hour period, from 6:00 am until 8:00 pm, on Wednesday, July 23.

**SOUTHEASTERN DISTRICT:** Waters of the Southeastern District will open to commercial purse seine fishing for a 14-hour period, from 6:00 am until 8:00 pm, on Wednesday, July 23. Regulatory closed waters within Orca Inlet northeast of a line from 60°29.10'N, 145°55.35'W., to 60°30.91'N., 145°58.52'W., will be suspended for this period, but anadromous stream closures will remain in effect. All waters within 500 yards of the terminus of all salmon streams within the area defined above will be closed for this fishing period. Additionally, all waters in front of Cordova, defined by a point on shore at 60°32.12'N., 145°47.00'W., extending out to 60°32.32'N., 145°47.49'W., and then to another point on shore at 60°34.06'N., 145°44.67'W., will be closed for this fishing period.



**The next scheduled seine fisheries announcement is anticipated to be at 2:00 pm Thursday, July 24.**  
**The next scheduled gillnet fisheries announcement is anticipated to be at 2:00 pm Wednesday, July 23.**

Announcement recordings are available for gillnet fisheries at 907-424-7535 and seine fisheries at 907-424-7345. In addition, announcement recordings are available in Anchorage at 907-267-2843.

The department also encourages permit holders to report observed violations to Wildlife Safeguard at 800-478-3377. Reports are anonymous and cash rewards may be paid for successful prosecution of violations.