



Advisory Announcement
For Immediate Release: June 11, 2025

CONTACT: Jeremy Botz and Heather Scannell
Finfish Area Management Biologists
(907) 424-3212

Prince William Sound Salmon Fishery Announcement #12

COPPER RIVER DISTRICT: The Copper River District, excluding waters north of a line from 60° 11.14' N., 144° 36.03' W. to 60° 12.34' N., 145° 09.97' W. to 60° 23.08' N., 146° 06.05' W. (**see map in Figure 1**), will open at 7:00 am on Thursday, June 12 for a 24-hour commercial drift gillnet fishing period. This expanded closure area closes all inside waters to commercial fishing to reduce Chinook salmon harvest.

The subsistence fishery will be open concurrent in time and area with the Copper River District commercial fishery, and including additional waters west of a line from 60° 17.88' N., 145° 38.40' W. to 60° 22.87' N., 145° 33.50' W. This Egg Island channel area is open to subsistence users only to provide access to sheltered inside waters for small boat subsistence users (**see map in Figure 1**).

The grass bank marker line is defined in 5 AAC 24.350(1)(A) with the exception of this year's extension of the closure line across Little Softuk (**see bold font below**). This closure line is defined with the following points:

<i>Point</i>	<i>Latitude</i>	<i>Longitude</i>
Point Whitshed South	60° 26.49' N.	145° 52.86' W.
Alaganik Slough North	60° 24.65' N.	145° 36.70' W.
Pete Dahl East	60° 20.44' N.	145° 29.14' W.
West Kokenhenik	60° 14.88' N.	145° 10.01' W.
East "East Side"	60° 14.83' N.	145° 03.36' W.
Coffee Creek East	60° 14.19' N.	144° 58.01' W.
Charlie Mohr North	60° 15.15' N.	144° 56.43' W.
Martin River North	60° 15.29' N.	144° 52.52' W.
Strawberry Reef	60° 13.93' N.	144° 50.66' W.
Little Softuk	60° 13.16' N.	144° 41.38' W.

Waters north of this line, within sloughs, and in Boswell Bay within the bay (5 AAC 24.350 (1)(A)) are closed to commercial and subsistence salmon fishing during all periods.

Forecast, sonar apportionment, and fish wheel indicators of Chinook salmon abundance all suggest a weak Copper River Chinook salmon run. Chinook salmon abundance in the commercial fishery peaks during the end of May through early June, and the commercial fishery is continuing to be managed conservatively to limit harvest. This management strategy is being implemented to ensure the achievement of the 21,000–31,000 Chinook salmon sustainable escapement goal while providing fishing opportunity on more abundant sockeye salmon. The 2015-2024 average cumulative Chinook salmon harvest to date in the Copper River District is 86% complete.

Miles Lake Sonar project apportionment data (Figure 2) indicate that the 2025 cumulative count of large Chinook salmon is low for the date. The escapement goal was met in 3 out of the last 6 years. It is too early in the run timing to determine the likelihood of meeting the goal this year. The current trend in large Chinook salmon

passage does not give a clear indication of count levels at the end of sonar operation. While this apportionment data provides additional insight on Chinook salmon, the apportionment method to count Chinook salmon has not undergone an in-depth analysis or review on how those data compare with the NVE mark-recapture project, which is what the final escapement estimate is based on.

During the commercial fishing season, subsistence harvest may occur in the Copper River District concurrent in time and area with commercial fishing periods until the Copper River District is closed at the end of the season. **Additionally, waters of the Copper River District, excluding the expanded Chinook salmon inside closure area, will open to subsistence fishing from 6:00 am to 10:00 pm on all Saturdays from June 7 through October 25.** Prince William Sound Management Area salmon subsistence permits may be obtained through any ADF&G office or online (<https://www.adfg.alaska.gov/Store/>). In Cordova, permits will be available during normal business hours Monday through Friday from 8:00 a.m. to 12:00 p.m. and 1:00 p.m. to 5:00 p.m. To assist with inseason harvest tracking, permit holders are encouraged to call the Cordova office at 907-424-3212 or report online (<https://www.adfg.alaska.gov/Harvest/>) to provide preliminary harvest reports.

Cumulative sonar count through 6/10 is 257,257 fish, whereas 214,738 fish would be expected by this date based on historical timing applied to the 2025 inriver goal. The 0600 count for 6/11 is 3,026 fish. Preliminary harvest estimates from the 12-hour period that started on Monday, June 9 were 160 Chinook and 25,100 sockeye salmon with 217 deliveries reported. The cumulative commercial harvest to date is 3,630 Chinook and 250,000 sockeye salmon. The 5-year (2020–2024) and 10-year (2015–2024) average cumulative harvests through 6/9 are 239,000 and 347,000 sockeye salmon, respectively.

BERING RIVER DISTRICT: Bering River District, west of a longitude line at 144° 28.20' W., will open at 7:00 am on Thursday, June 12 for a 24-hour commercial drift gillnet fishing period.

COGHILL DISTRICT: The Coghill District, excluding the Granite Bay and Esther Subdistricts and the Wally Noerenberg Hatchery (WNH) THA and SHA, will open to commercial drift gillnet harvest for a 36-hour fishing period starting at 8:00 am on Thursday, June 12. Waters of Port Wells and College Fiord, north of 60° 55.81' N., and east of a line from Pakenham Point (61° 00.45' N., 148° 04.85' W.) to 60° 55.81' N., 148° 10.92' W., will open to commercial drift gillnet harvest for an 84-hour period starting at 8:00 am on Thursday, June 12. Until further notice, regulatory closed waters pertaining to the Coghill River, as specified in 5 AAC 24.350(6)(B), will not be in effect during open commercial fishing periods. Commercial fishing will not be permitted within the bed or channel of the Coghill River at any stage of the tide. Preliminary harvest estimates from the 84-hour period that started on Thursday, June 5 were 8,280 chum and 35 sockeye salmon with 81 deliveries reported.

PWSAC requests that the Granite Bay and Esther Subdistrict remain closed. Cost recovery effort will continue at WNH as run entry and hatchery escapement warrants. PWSAC is 13% complete on the 2025 chum revenue goal (10.5% for total gillnet revenue goal).

ESHAMY DISTRICT: The Eshamy District, **excluding the MBH AGZ**, will open to commercial gillnet harvest for a 36-hour period starting at 8:00 am on Thursday, June 12. Preliminary harvest estimates from the 36-hour period that started on Monday, June 9 were 3,000 sockeye and 3,960 chum salmon with 87 deliveries reported.

PWSAC recommends a 36-hour fishing period in the Main Bay Subdistrict excluding the MBH AGZ.

MONTAGUE DISTRICT: The Port Chalmers Subdistrict will open to drift gillnet fishing for an 84-hour period starting at 8:00 am on Thursday, June 12 with an additional 60-hour period beginning at 8:00 am on Monday, June 16. A regular schedule of two fishing periods per week is anticipated to remain in effect until further notice. The western boundary of the Port Chalmers Subdistrict is defined by lines from 60°20.00'N., 147°26.59'W. to 60°14.75'N., 147°35.35'W. to 60°02.50'N., 147°44.41'W. **Regulatory closed waters and anadromous stream**

closures within the Port Chalmers Subdistrict will not be in effect until further notice. Preliminary harvest estimates from the 84-hour period that started on Thursday, June 5 were 67,400 chum salmon with 275 deliveries reported.

SOUTHWESTERN DISTRICT: The AFK Hatchery THA and SHA will open to purse seine fishing for two 36-hour periods beginning at 8:00 am on Thursday, June 12 and at 8:00 am on Saturday, June 14, and an additional 48-hour period at 8:00 am on Monday, June 16. A regular schedule of three fishing periods per week is expected to remain in effect until further notice. **Anadromous stream closures within the AFK Hatchery THA and SHA will not be in effect until further notice.**

Copies of the regulation booklet, *2022-2025 Commercial Salmon Fishing Regulations for Prince William Sound*, are available in the Cordova ADFG office. Regulation booklets that include changes made at the December 2024 Board of Fisheries meeting are not yet available.

ALL buyers purchasing fish in the PWS Management Area are required to complete a Processor Registration Form. Contact the Cordova office for any registration questions.

The next scheduled salmon fisheries announcement is anticipated to be at 2:00 pm Saturday, June 14.

Announcement recordings are available for gillnet fisheries at 907-424-7535 and seine fisheries at 907-424-7345. In addition, announcement recordings are available in Anchorage at 907-267-2843.

Additionally, announcements, inseason harvest data, and escapement data are available at the following web address: <http://www.adfg.alaska.gov/index.cfm?adfg=commercialbyareapws.main> (Prince William Sound and Copper River homepage).

Unless otherwise specified, all openings are clock openings based on Alaska Daylight Time, which is based on Coordinated Universal Time and may be obtained by calling 303-499-7111.

The department encourages commercial permit holders to renew their licenses early and to check their CFEC vessel registration stickers to make sure they are current.

The department also encourages permit holders to report observed violations to Wildlife Safeguard at 800-478-3377. Reports are anonymous and cash rewards may be paid for successful prosecution of violations.

Figure 1.- Copper River District Chinook salmon outside closure area.

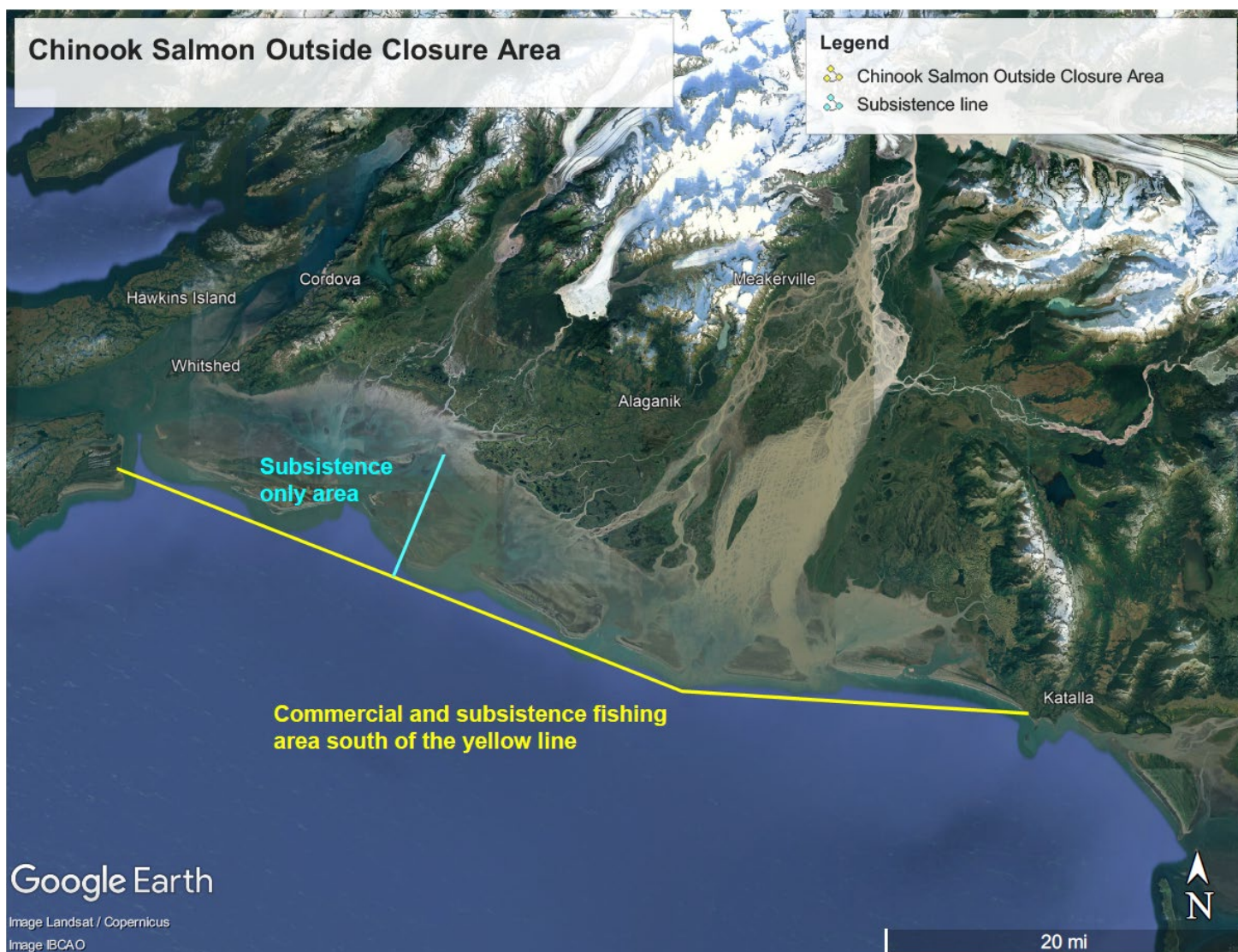


Figure 2.- Miles Lake Sonar large salmon apportionment, 2019-2025.

