



Advisory Announcement
For Immediate Release: June 8, 2025

CONTACT: Jeremy Botz and Heather Scannell
Finfish Area Management Biologists
(907) 424-3212

Prince William Sound Salmon Fishery Announcement #11

This announcement supersedes the Copper River and Bering River District portion of the previous announcement.

Time and open area are being reduced to decrease Chinook salmon harvest in response to poor counts at the Miles Lake Sonar which declined and remained low over the last three days (Figure 2).

COPPER RIVER DISTRICT: The Copper River District, excluding waters north of a line from 60° 11.14' N., 144° 36.03' W. to 60° 12.34' N., 145° 09.97' W. to 60° 23.08' N., 146° 06.05' W. (**see map in updated Figure 1**), will open at 7:00 am on Monday, June 9 for a **12-hour** commercial drift gillnet fishing period. This new expanded closure area closes all inside waters to commercial fishing to reduce Chinook salmon harvest.

The subsistence fishery will be open concurrent in time and area with the Copper River District commercial fishery, and including additional waters west of a line from 60° 17.88' N., 145° 38.40' W. to 60° 22.87' N., 145° 33.50' W. This Egg Island channel area is open to subsistence users only to provide access to sheltered inside waters for small boat subsistence users (**see map in updated Figure 1**).

The grass bank marker closed water line is defined in 5 AAC 24.350(1)(A) with the exception of this year's extension of the closure line across Little Softuk (**see bold font below**). This closure line is defined with the following points:

<i>Point</i>	<i>Latitude</i>	<i>Longitude</i>
Point Whitshed South	60° 26.49' N.	145° 52.86' W.
Alaganik Slough North	60° 24.65' N.	145° 36.70' W.
Pete Dahl East	60° 20.44' N.	145° 29.14' W.
West Kokenhenik	60° 14.88' N.	145° 10.01' W.
East "East Side"	60° 14.83' N.	145° 03.36' W.
Coffee Creek East	60° 14.19' N.	144° 58.01' W.
Charlie Mohr North	60° 15.15' N.	144° 56.43' W.
Martin River North	60° 15.29' N.	144° 52.52' W.
Strawberry Reef	60° 13.93' N.	144° 50.66' W.
Little Softuk	60° 13.16' N.	144° 41.38' W.

Waters north of this line, within sloughs, and in Boswell Bay within the bay (5 AAC 24.350 (1)(A)) are closed to commercial and subsistence salmon fishing during all periods.

Forecast, harvest, sonar apportionment, and fish wheel indicators of Chinook salmon abundance all suggest a weak Copper River Chinook salmon run. Chinook salmon abundance in the commercial fishery peaks during the end of May through early June, and the commercial fishery is continuing to be managed conservatively to limit harvest. This management strategy is being implemented to ensure the achievement of the 21,000–31,000

Chinook salmon sustainable escapement goal while providing fishing opportunity on more abundant sockeye salmon.

Miles Lake Sonar project apportionment data (Figure 2) indicate that the 2025 cumulative count of large Chinook salmon is low for the date. The escapement goal was met in 3 out of the last 6 years. It is too early in the run timing to determine the likelihood of meeting the goal this year. The current trend in large Chinook salmon passage does not give a clear indication of count levels at the end of sonar operation. While this apportionment data provides additional insight on Chinook salmon, the apportionment method to count Chinook salmon has not undergone an in-depth analysis or review on how those data compare with the NVE mark-recapture project, which is what the final escapement estimate is based on.

Cumulative sonar count through 6/7 is 197,916 fish, whereas 173,338 fish would be expected by this date based on historical timing applied to the 2025 inriver goal. The 0600 count for 6/8 is 3,227 fish. Preliminary harvest estimates from the 12-hour period that started on Thursday, June 5 were 523 Chinook and 49,000 sockeye salmon with 258 deliveries reported. The cumulative commercial harvest to date is 3,480 Chinook and 223,000 sockeye salmon. The 5-year (2020–2024) and 10-year (2015–2024) average cumulative harvests through 6/5 are 198,000 and 290,000 sockeye salmon, respectively.

BERING RIVER DISTRICT: Bering River District, west of a longitude line at 144° 28.20' W., will open at 7:00 am on Monday, June 9 for a **12-hour** commercial drift gillnet fishing period.

Copies of the regulation booklet, *2022-2025 Commercial Salmon Fishing Regulations for Prince William Sound*, are available in the Cordova ADFG office. Regulation booklets that include changes made at the December 2024 Board of Fisheries meeting are not yet available.

ALL buyers purchasing fish in the PWS Management Area are required to complete a Processor Registration Form. Contact the Cordova office for any registration questions.

The next scheduled salmon fisheries announcement is anticipated to be at 2:00 pm Wednesday, June 11.

Announcement recordings are available for gillnet fisheries at 907-424-7535 and seine fisheries at 907-424-7345. In addition, announcement recordings are available in Anchorage at 907-267-2843.

Additionally, announcements, inseason harvest data, and escapement data are available at the following web address: <http://www.adfg.alaska.gov/index.cfm?adfg=commercialbyareapws.main> (Prince William Sound and Copper River homepage).

Unless otherwise specified, all openings are clock openings based on Alaska Daylight Time, which is based on Coordinated Universal Time and may be obtained by calling 303-499-7111.

The department encourages commercial permit holders to renew their licenses early and to check their CFEC vessel registration stickers to make sure they are current.

The department also encourages permit holders to report observed violations to Wildlife Safeguard at 800-478-3377. Reports are anonymous and cash rewards may be paid for successful prosecution of violations.

Figure 1.- Copper River District Chinook salmon outside closure and subsistence only areas 6-9-25.

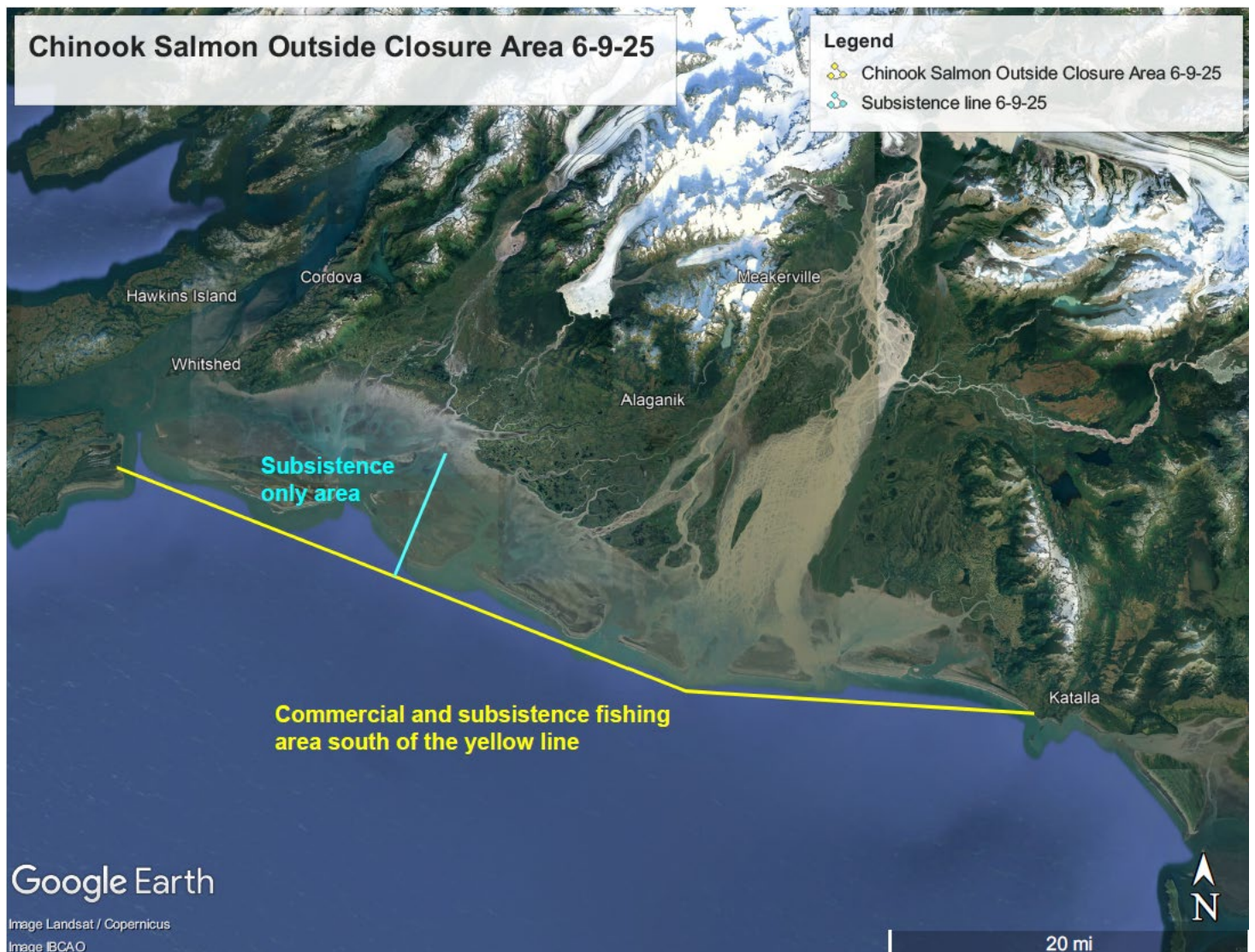


Figure 2.- Miles Lake Sonar large salmon apportionment, 2019-2025.

