



Advisory Announcement

For Immediate Release: May 30, 2025

CONTACT: Zane Chapman
Region I Shellfish Biologist
zane.chapman@alaska.gov
(907) 465-4274

SOUTHEAST ALASKA PERSONAL USE GOLDEN KING CRAB FISHERY

The 2025/2026 Southeast Alaska personal use golden king crab (GKC) fishery in Registration Area A (Southeast Alaska) will open at 12:01 a.m., July 1, 2025. Alaska residents fishing for GKC must have an Alaska Department of Fish and Game 2025/2026 Southeast Alaska Regional Personal Use King Crab Permit [5 AAC 77.664(a)] in their possession.

The permit is free and available through the department's online store at: www.adfg.alaska.gov/Store/. Personal use fishers must sign their permit to make it valid and have the permit along with a current sport fishing license in their possession while taking part in personal use king crab fisheries in Southeast Alaska. Regional personal use king crab permits are valid for GKC in all open areas. Permits must be filled out each time king crab pots or ring nets are retrieved (or dive gear is used) whether king crab are harvested or not. Permit holders are required to report their harvest either online any time at: <https://www.adfg.alaska.gov/Harvest/> or by turning in the completed permit at the end of the season.

Fishery Information:

Golden king crab may be taken from July 1 through June 15 [5 AAC 77.664(c)(2)]. The bag and possession limit for all species of king crab in combination (including GKC) is three crab per person, however the bag and possession limit for red king crab (RKC) and blue king crab (BKC) has been reduced to **ONE** RKC or BKC. Because the RKC and BKC bag and possession limit has been reduced, the bag limit for GKC is three crab or two crab if the fishers also possesses one RKC or BKC. The department used GKC commercial fishery information from 2025 to set bag and possession limits and determine open areas for the GKC personal use fishery in Southeast Alaska. Refer to Figure 1 for a map showing waters of Southeast Alaska open to the retention of personal use GKC.

Additional Information:

For additional information visit the Southeast Alaska Personal Use King Crab Fishery website:

<http://www.adfg.alaska.gov/index.cfm?adfg=PersonalUsebyAreasoutheastkingCrab.regs>. Please refer to 5 AAC 77.664 in the 2024–2025 Statewide Subsistence and Personal Use Fishing Regulations booklet for additional regulations regarding personal use king crab fishing, or view the regulations online at: <https://www.adfg.alaska.gov/index.cfm?adfg=fishregulations.personalUse>.

Analysis of the 2025 GKC commercial fishery data will be completed by mid-December. Any changes to the 2025/2026 Southeast Alaska personal use GKC fishery will be announced at that time.

The Emergency Order corresponding with this announcement is EO 1C2125.

Advisory Announcement web site: <http://www.adfg.alaska.gov/index.cfm?adfg=cfnews.main>.

Office	Ketchikan	Petersburg	Wrangell	Sitka	Juneau	Haines	Yakutat
ADF&G	225-5195	772-3801		747-6688	465-4250	766-2830	784-3255
AWT	225-5111	772-3983	874-3215	747-3254	465-4000	766-2533	784-3220

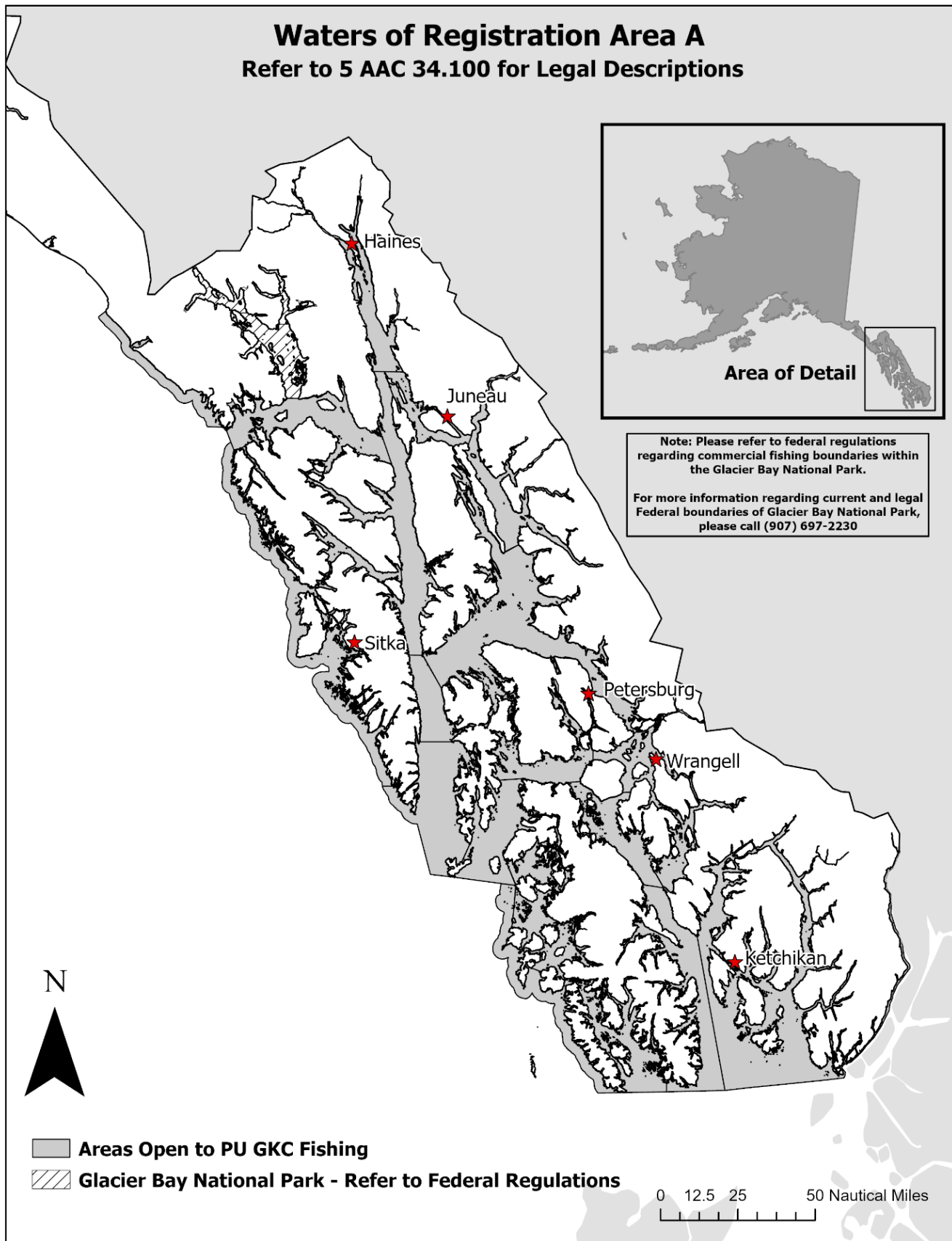


Figure 1. 2025/2026 Registration Area A (Southeast Alaska) GKC personal use open and closed fishery areas, for reference purposes only.