

**Division of Commercial Fisheries**  
**Forrest Bowers, Acting Director**

Douglas Area Office  
PO Box 110024  
Juneau, AK 99811-0024



**Alaska Department of Fish and Game**  
**Doug Vincent-Lang, Commissioner**

PO Box 115526  
Juneau, AK 99811-5526  
[www.adfg.alaska.gov](http://www.adfg.alaska.gov)

**Advisory Announcement**  
***For Immediate Release: March 14, 2025***

**CONTACT: Alex McCarrel**  
**Groundfish Biologist**  
**[alex.mccarrel@alaska.gov](mailto:alex.mccarrel@alaska.gov)**  
**(907) 747-8322**

**IFQ SABLEFISH FISHING PROHIBITED IN STATE WATERS OF THE EASTERN  
GULF OF ALASKA (5 AAC 28.170)**

The harvest of sablefish is prohibited in all state waters of the Southeast District by participants in the federal Individual Fishing Quota (IFQ) sablefish fishery. This includes internal state waters, waters of the outer coast within the three nautical mile line (0-3 nmi), and waters extending three miles seaward of the baseline defined in 5 AAC 39.975(13) (Figure 1).

For information on the federal sablefish IFQ fishery contact NOAA enforcement: 907-747-6940 (Sitka); 907-586-7225 (Juneau); 907-772-2285 (Petersburg); or 907- 247-5804 (Ketchikan).

Advisory announcement website: <http://www.adfg.alaska.gov/index.cfm?adfg=cfnews.main>

| Office             | Ketchikan | Petersburg | Wrangell | Sitka    | Juneau   | Haines   | Yakutat  |
|--------------------|-----------|------------|----------|----------|----------|----------|----------|
| ADF&G              | 225-5195  | 772-3801   |          | 747-6688 | 465-4250 | 766-2830 | 784-3255 |
| AWT                | 225-5111  | 772-3983   | 874-3215 | 747-3254 | 465-4000 | 766-2533 | 784-3220 |
| Groundfish Hotline |           |            |          | 747-4882 |          |          |          |

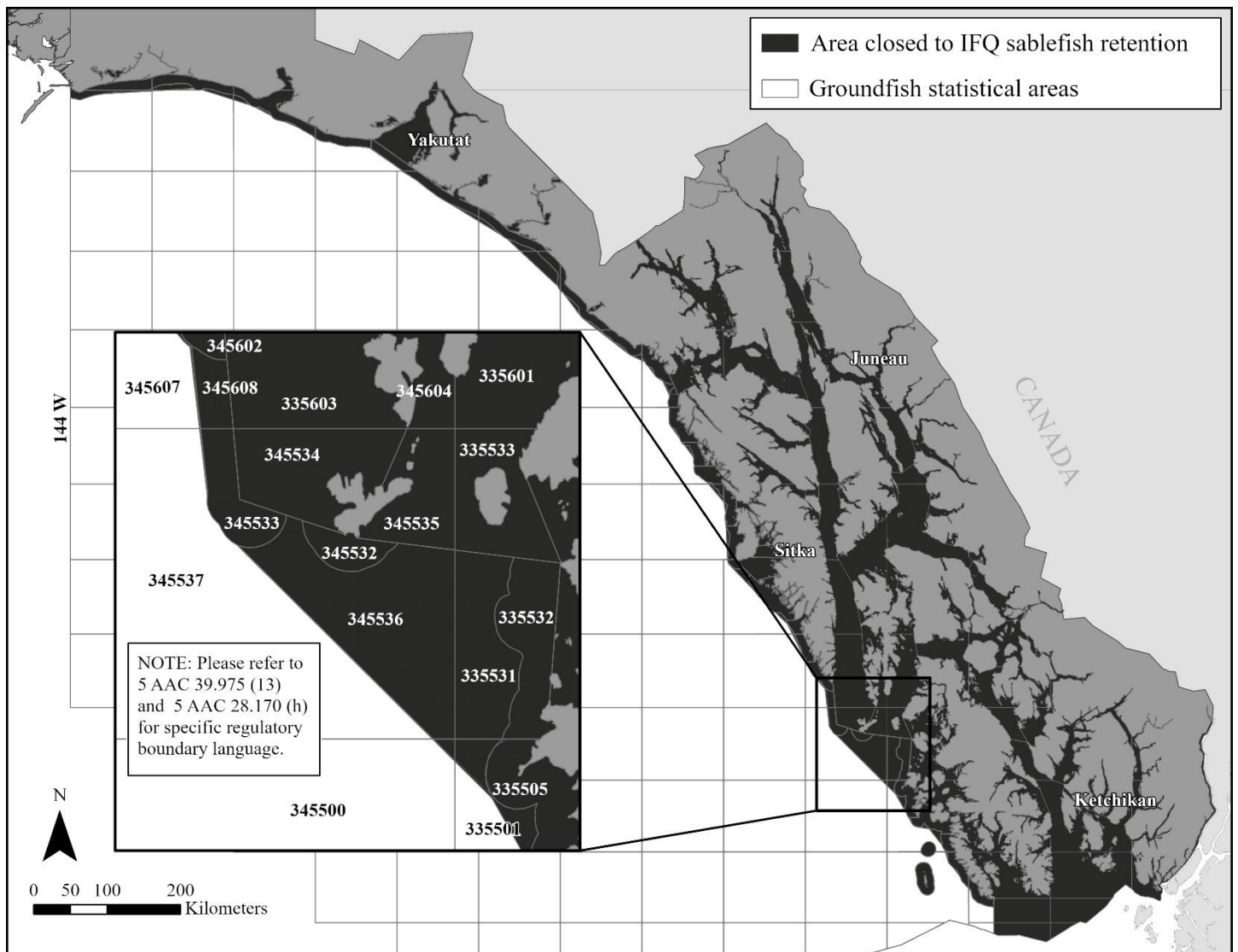


Figure 1. –Waters of Alaska closed to IFQ sablefish fishing. This map is for general information purposes only.