



## Advisory Announcement

## CONTACT:

Deena Jallen, Area Management Biologist  
907-949-1320 (Emmonak)

**Released: June 15, 2023**

**Toll free fishing schedule and counts: 866-479-7387**

### 2023 Yukon River Salmon Summer Fishery Announcement #9 Subdistricts 4-B and 4-C Subsistence Fishing Schedule

Districts Affected: Upper Yukon Area

High water continues to be observed in much of the Yukon River area. Chinook and summer chum salmon appear to be starting to enter the river. However, these first catches are about a week later than normal and passage counts are still well below average. The department will continue to monitor the run as it develops.

The 2023 Chinook salmon run size is forecasted to be small and unlikely to meet escapement objectives or provide any surplus for harvest. Consistent with the preseason management strategy to take a conservative approach this season, subsistence fishing closures will continue upriver based on run timing. This is intended to protect Chinook salmon stocks while they migrate upriver to spawning grounds in Alaska and Canada.

If the summer chum salmon run is projected to meet the lower end of the drainagewide escapement goal (at least 500,000 fish), fishing opportunities with selective gear types may be announced.

Assessment project and management updates will be shared during the weekly YR DFA teleconferences each **Tuesday at 1:00 p.m. (Alaska time). Call in number: 1-800-315-6338, Passcode: 98566#**

#### Subsistence Management Actions

Gillnets of 4-inch or smaller mesh may be used during salmon fishing closures to target nonsalmon. Fishermen are reminded to set this gear in areas where nonsalmon species are abundant to avoid incidentally harvesting salmon. While any salmon caught in this gear may be kept, if it appears salmon are being targeted with this gear, it could be further restricted.

#### Subdistrict 4-B and 4-C (including Galena and Ruby):

Subsistence fishing is currently open 24 hours a day, seven days per week with 7.5-inch or smaller mesh gillnets.

**Effective 8 p.m. Wednesday, June 21, salmon fishing is closed. Fish wheels and gillnets larger than 4-inch are not allowed. Gillnets of 4-inch or smaller mesh may be used to target nonsalmon and are restricted to 60-feet or less in length and must be operated as a set net. Nets should be set near shore.**

**Dip nets, beach seines, and hook and line gear may be used for nonsalmon species, pink and sockeye salmon; however, Chinook and summer chum salmon must be released alive.**

#### Koyukuk River (including Huslia, Hughes, Allakaket, Alatna, and Bettles):

Subsistence fishing is currently open 24 hours a day, seven days per week with 7.5-inch or smaller mesh gillnets.

A subsistence fishing permit is required for all species in the Koyukuk River above Bettles including the community of Wiseman. Gillnet gear in the permit area may only be used from August 20 to June 30 and must be 3½ inches or smaller mesh size.

Gear types for nonsalmon species include dip net, beach seine, hand line, longline, fyke net, lead, and spear, and during subsistence salmon fishing closures Chinook and summer chum salmon must be released alive. Pink and sockeye salmon may be retained. The area where hook and line gear may be used for subsistence has been extended above the Nulato River, except for District 6 and some closed waters (Figure 1).

In District 4 and the Koyukuk River, submerged gillnets may be used for subsistence fishing during ice-free months, however submerged nets must have a visible buoy or cluster of floats attached to both ends of the net. All gillnets must be marked with a buoy, float, or keg that has the fisherman's first initial, last name, and address.

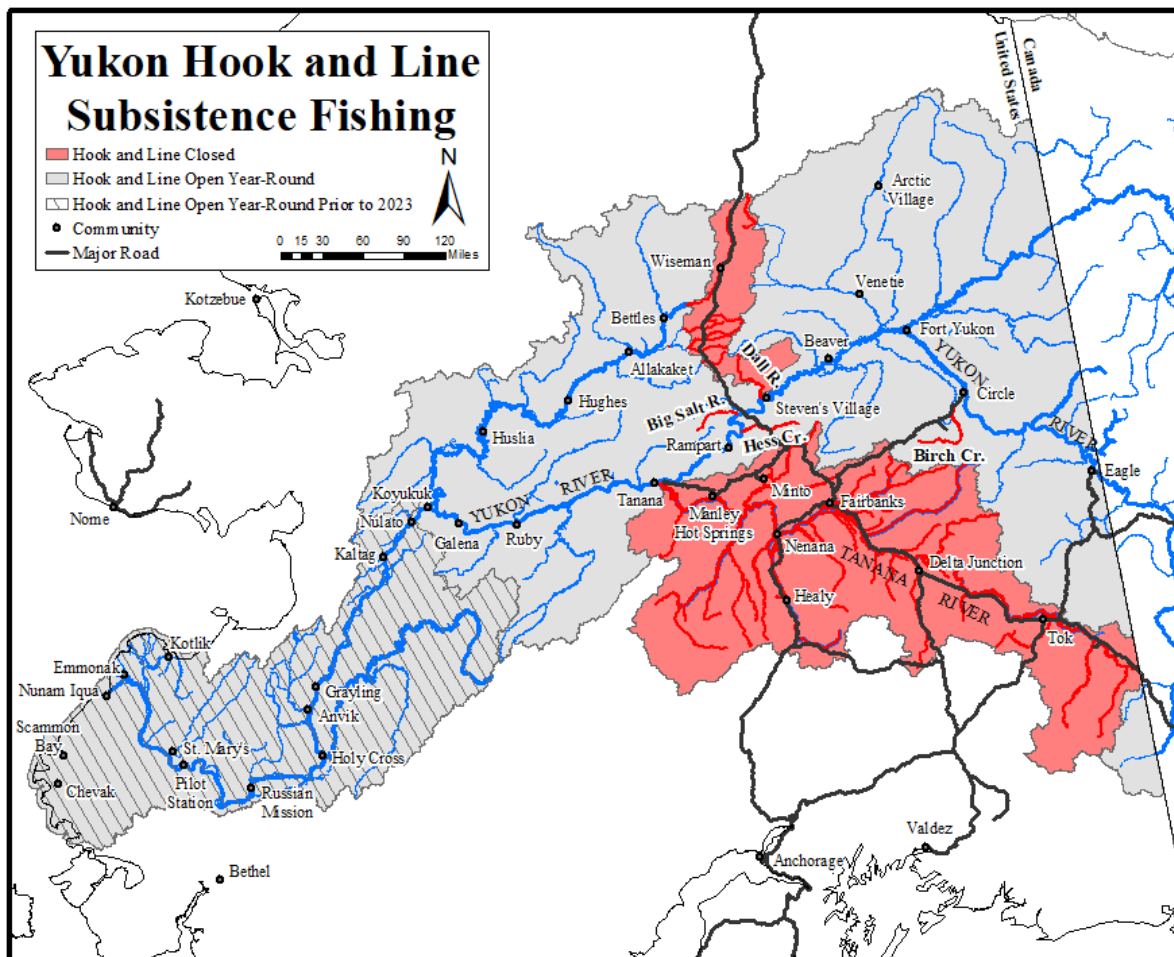


Figure 1. Areas where hook and line are legal as a subsistence fishing gear type in the Yukon Area (gray shaded areas). Closed areas for subsistence fishing with hook and line (red/darker shaded areas) include the Tanana River drainage, Big Salt River, Hess Creek, Dall River drainage, Birch Creek upstream of the Steese Highway bridge, Fish Creek drainage upstream from the mouth of Bonanza Creek, Bonanza Creek drainage, Kanuti River drainage upstream from a point 5 miles downstream of the state highway crossing, and Jim River drainage.

The ADF&G Emmonak office is open Mondays to Fridays 8 a.m. to 5 p.m., Saturdays 1 p.m. to 5 p.m. (closed Sundays). ADF&G Emmonak office: 1-907-949-1320.

### **Federal Special Action**

The Alaska Department of Fish and Game (ADF&G) and the U.S. Fish and Wildlife Service (USFWS) have coordinated on this advisory announcement. As there is no salmon fishing allowed for Chinook and chum salmon, the Federal manager has not issued any Federal special actions at this time. The Emmonak USFWS office is not open. To reach the USFWS Yukon River Subsistence Fishery Manager, call Holly Carroll at 907-351-3029.



This is an announcement by the ADF&G and the USFWS. Federal Special Actions will be posted on [www.doi.gov/subsistence/fisheries-special-actions](http://www.doi.gov/subsistence/fisheries-special-actions).

ADF&G Advisory Announcements will be posted on [www.cfnews.adfg.alaska.gov/](http://www.cfnews.adfg.alaska.gov/) and shared on Facebook at [www.facebook.com/YukonRiverFishingADFG](https://www.facebook.com/YukonRiverFishingADFG).

