



Advisory Announcement

For Immediate Release: July 19, 2022

CONTACT: Heather Scannell and Jeremy Botz

Finfish Area Management Biologists

(907) 424-3212

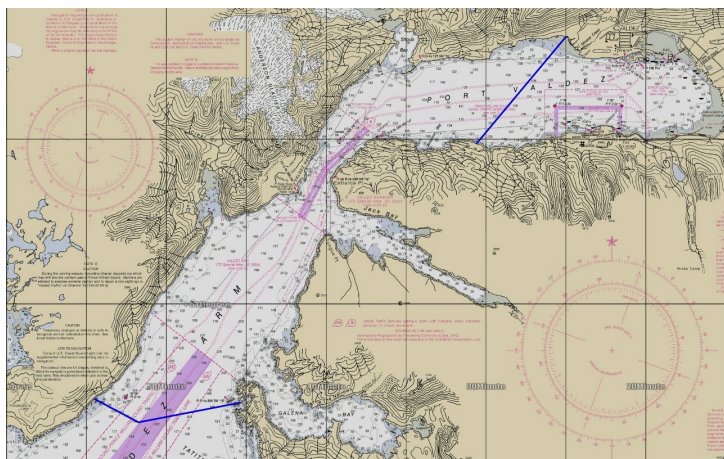
Prince William Sound Salmon Fishery Announcement #37

SEINE FISHERIES: Run entry into Valdez Arm and Port Valdez remains strong and VFDA has recommended an additional fishing period targeting SGH pink salmon. The next broad area commercial purse seine fishing period will occur Friday, July 22, with time and area specifics to be announced Wednesday, July 20.

EASTERN DISTRICT: Waters of the Eastern District, north of a line from **60°57.11' N. lat., 146°54.52' W. long. to 60°56.40' N. lat., 146°51.75' W. long. to 60°57.00' N. lat., 146°45.35' W. long.** will open to commercial purse seine fishing for a 14-hour period, from 6:00 am until 8:00 pm, on Wednesday, July 20. Waters of Port Valdez east of a line from a point on shore at 61°04.85' N. lat., 146°30.62' W. long., to a point on shore at 61°08.10' N. lat., 146°25.00' W. long., will be closed to commercial fishing during this period. Regulatory closed waters and anadromous stream closures north of a line from Potato Point to Entrance Point will not be in effect during this fishing period.

Waters inside of the following Eastern District Salmon Harvest Task Force (SHTF) markers will be closed for this period to ensure escapement.

- (1) **Galena Bay:** waters east of a line from a shore marker at approximately 60°56.87' N. lat., 146°39.87' W. long. to a shore marker at approximately 60°56.55' N. lat., 146°39.65' W. long.;
- (2) **Jack Bay:** waters south and east of a line from a shore marker at approximately 61°02.34' N. lat., 146°35.27' W. long. to a shore marker at approximately 61°02.17' N. lat., 146°39.77' W. long.;
- (3) **Sawmill Bay:** north of a line from a marker on shore at approximately 61°02.71' N. lat., 146°46.44' W. long. to a shore marker at approximately 61°02.58' N. lat., 146°47.07' W. long.;



Copies of the updated regulation booklet, *2022-2024 Commercial Salmon Fishing Regulations for Prince William Sound*, are not yet available in the Cordova ADFG office. In the interim, please reference https://www.adfg.alaska.gov/static/regulations/fishregulations/pdfs/commercial/2022-2024_cf_pws_salmon_regs.pdf.

ALL buyers purchasing fish in the PWS Management Area are required to complete a Processor Registration Form. Contact the Cordova office for any questions regarding registration.

The next scheduled seine fisheries announcement is anticipated to be at 2:00 pm on Wednesday, July 20. The next scheduled gillnet fisheries announcement is anticipated to be at 2:00 pm on Wednesday, July 20.

Permit holders are advised that unscheduled announcements based on current escapement data may occur at anytime inseason either establishing an additional period or extending an open period.

Announcement recordings are available for **gillnet fisheries at 907-424-7535 and seine fisheries at 907-424-7345. In addition, announcement recordings are available in Anchorage at 267-2843.**

Additionally, announcements, inseason harvest data, and escapement data are available at the following web address:

Unless otherwise specified, all openings are clock openings based on Alaska Daylight Time, which is based on Coordinated Universal Time and may be obtained by calling 303-499-7111.

The department encourages commercial permit holders to renew their licenses early and to check their CFEC vessel registration stickers to make sure they are current.

The department also encourages permit holders to report observed violations to Wildlife Safeguard at 800-478-3377. Reports are anonymous and cash rewards may be paid for successful prosecution of violations.