



Advisory Announcement

For Immediate Release: July 14, 2022

CONTACT: Heather Scannell and Jeremy Botz

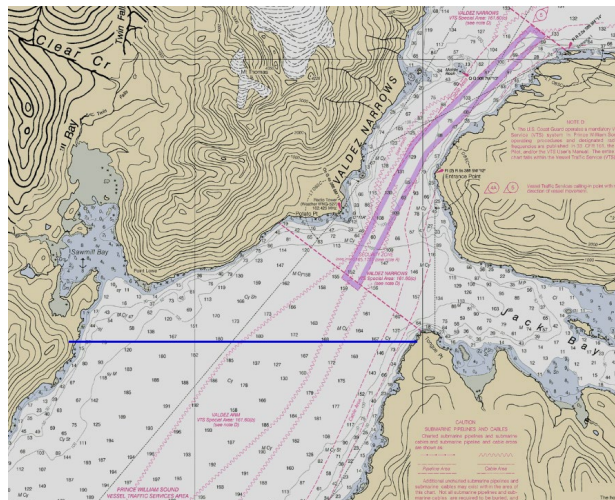
Finfish Area Management Biologists

(907) 424-3212

Prince William Sound Salmon Fishery Announcement #29

SEINE FISHERIES: Aerial surveys of the Eastern and Southeastern Districts were flown earlier this week and wild stocks are within or near anticipated levels for this date. Persistent fog in the Northern, Coghill, and Northwestern Districts has impacted the aerial survey schedule. The Department will allow limited commercial fishing opportunity for this period to obtain stock composition data; any efforts to facilitate clean sampling of harvested fish is appreciated.

EASTERN DISTRICT: Waters of the Eastern District, **south of 61°02.00' N. lat.**, will open to commercial purse seine fishing for a 14-hour period, from 6:00 am until 8:00 pm, on Friday, July 15. Preliminary harvest for the period ending on Wednesday, July 13 was 593,000 pink salmon with 137 reported deliveries. Harvest composition from the period ending on Saturday, July 9 was 100% VFDA.



Waters inside of the following Eastern District Salmon Harvest Task Force (SHTF) markers will be closed for this period to ensure chum salmon escapement.

- (1) **Galena Bay:** waters east of a line from a shore marker at approximately 60°56.87' N. lat., 146°39.87' W. long. to a shore marker at approximately 60°56.55' N. lat., 146°39.65' W. long.;
- (2) **Port Fidalgo Subdistrict:** waters east of 146°24.12' W. long.
- (3) **Landlocked Bay:** waters north of 60°50.76' N. lat.;
- (4) **Sheep Bay:** north of a line from a shore marker at approximately 60°41.13' N. lat., 145°58.87' W. long. to a shore marker at approximately 60°40.46' N. lat., 145°58.01' W. long.;

- (5) **Beartrap Bay:** north of a line from a shore marker at approximately 60°45.13' N. lat., 146°06.12' W. long. to a shore marker at approximately 60°44.51' N. lat., 146°04.57' W. long.; **this includes all waters of Port Gravina and Beartrap Bay inside of this line;**
- (6) **Olsen Bay:** north of a line from a shore marker at approximately 60°43.46' N. lat., 146°10.14' W. long. to a shore marker at approximately 60°43.21' N. lat., 146°13.97' W. long.;
- (7) **St. Matthews Bay:** north of a line from a shore marker at approximately 60°43.36' N. lat., 146°19.07' W. long. to a shore marker at approximately 60°43.61' N. lat., 146°21.17' W. long.;
- (8) **Irish Cove:** south of a line from a shore marker at approximately 60°46.73' N. lat., 146°26.62' W. long. to a shore marker at approximately 60°46.27' N. lat., 146°27.12' W. long.;

NORTHWESTERN DISTRICT: Waters of the Northwestern District will open to commercial purse seine fishing for a 14-hour period, from 6:00 am until 8:00 pm, on Friday, July 15.

Waters inside of the following Northwestern District Salmon Harvest Task Force (SHTF) markers will be closed for this period to ensure early season escapement. Waters closed for this period include the following areas:

- (1) **Culross Pass:** within the passage south of a line from a shore marker at approximately 60°45.47' N. lat., 148°12.63' W. long. to a shore marker at approximately 60°45.82' N. lat., 148°13.57' W. long. and north of a line from a shore marker at approximately 60°37.48' N. lat., 148°10.12' W. long. to a shore marker at approximately 60°37.16' N. lat., 148°11.42' W. long.;
- (2) **Cochrane Bay:** south of a line from a shore marker at approximately 60°44.91' N. lat., 148°17.12' W. long. to a shore marker at approximately 60°46.01' N. lat., 148°21.77' W. long.;
- (3) **Port Nellie Juan:** south and west of a line from a shore marker approximately 60°46.01' N. lat., 148°21.77' W. long.;

MONTAGUE DISTRICT: Waters of the Port Chalmers Subdistrict will open to purse seine fishing for a 14-hour period starting at 6:00 am on Friday, July 15. Regulatory closed waters and anadromous stream closures within the Port Chalmers Subdistrict will not be in effect until further notice.

Copies of the updated regulation booklet, *2022-2024 Commercial Salmon Fishing Regulations for Prince William Sound*, are not yet available in the Cordova ADFG office. In the interim, please reference https://www.adfg.alaska.gov/static/regulations/fishregulations/pdfs/commercial/2022-2024_cf_pws_salmon_regs.pdf.

ALL buyers purchasing fish in the PWS Management Area are required to complete a Processor Registration Form. Contact the Cordova office for any questions regarding registration.

The next scheduled seine fisheries announcement is anticipated to be at 2:00 pm on Saturday, July 16. The next scheduled gillnet fisheries announcement is anticipated to be at 2:00 pm on Saturday, July 16.

Permit holders are advised that unscheduled announcements based on current escapement data may occur at any time inseason either establishing an additional period or extending an open period.

Announcement recordings are available for **gillnet fisheries at 907-424-7535 and seine fisheries at 907-424-7345. In addition, announcement recordings are available in Anchorage at 267-2843.**

Additionally, announcements, inseason harvest data, and escapement data are available at the following web address:

Unless otherwise specified, all openings are clock openings based on Alaska Daylight Time, which is based on

Coordinated Universal Time and may be obtained by calling 303-499-7111.

The department encourages commercial permit holders to renew their licenses early and to check their CFEC vessel registration stickers to make sure they are current.

The department also encourages permit holders to report observed violations to Wildlife Safeguard at 800-478-3377. Reports are anonymous and cash rewards may be paid for successful prosecution of violations.

