

Division of Commercial Fisheries
Sam Rabung, Director

Soldotna Office
43961 K. Beach Rd., Suite B
Soldotna, AK 99669



Alaska Department of Fish and Game
Doug Vincent-Lang, Commissioner

PO Box 115526
Juneau, AK 99811-5526
www.adfg.alaska.gov

Advisory Announcement

For Immediate Release: July 17, 2021

CONTACT: Brian Marston

**UCI Commercial Fisheries
Area Management Biologist
Main office ph. 907-262-9368**

UPPER COOK INLET COMMERCIAL FISHING ANNOUNCEMENT No. 19 EMERGENCY ORDER NUMBER 2S-19-21

Upper Cook Inlet Commercial Fishing Announcement No. 19 opens commercial salmon fishing with set and drift gillnets in the Kasilof River Special Harvest Area (KRSHA) from 2:00 p.m. until 11:59 p.m. on Sunday, July 18, 2021.

As of July 16, Kasilof River sockeye salmon escapement is approximately 233,000 fish and 50% complete based on average run timing. The biological escapement goal for Kasilof River sockeye salmon is 140,000 to 320,000, with projections of final escapement of more than 490,000 fish. The fishing time provided in this announcement is intended to harvest sockeye salmon returning to the Kasilof River while minimizing harvest of Kenai River king and sockeye salmon.

Commercial fishermen are reminded of the following provisions that apply to fishing within the KRSHA:

- a. a set gillnet may not exceed 35 fathoms in length;
- b. no more than 50 fathoms of drift gillnet may be used to take salmon, but drifters are reminded that 5 AAC 21.331 and 5 AAC 39.240 are still in effect, limiting the amount of drift gillnet gear that may be aboard your vessel to no more than 150 fathoms for single permit vessels or no more than 200 fathoms for dual permit vessels.
- c. a permit holder may not use more than one set gillnet per permit that is no more than 35 fathoms in length and 45 mesh in depth, to take salmon at any time; dual set gillnet permit holders may fish with 2 nets total;
- d. a person may not operate a gillnet outside the special harvest area when operating a gillnet in the special harvest area;
- e. there is no minimum distance between gear, except that a gillnet may not be set or operated within 600 feet of a set gillnet located outside of the special harvest area; and
- f. Except for nets which may not be in the water after the closure, set gillnet gear, including running lines, shore leads, anchors, and buoys must be removed from the water and the beach prior to the opening of the KRSHA and no more than 4 hours after any closure of the KRSHA, and may not be placed back in the water or on the beach prior to the next opening of the KRSHA.
- g. During this fishing period in the KRSHA, the navigation channel is closed to all commercial fishing with set gillnet gear including nets and anchor lines.
- h. Set gillnetting is allowed in approximately the first 1,200 feet from shore within the boundaries of the KRSHA (see Figure 1 and waypoints), while drift gillnetting is allowed

beyond the set gillnets within the KRSHA. The boundary between gear types is displayed on Figure 1 from waypoint 5 through waypoint 8, as defined in 5 AAC 21.365 (f) and (f)(1).

Fish harvested in the KRSHA by set gillnet fishermen during this fishing period should be reported in statistical area 244-25 and by drift fishermen in statistical area 244-26.

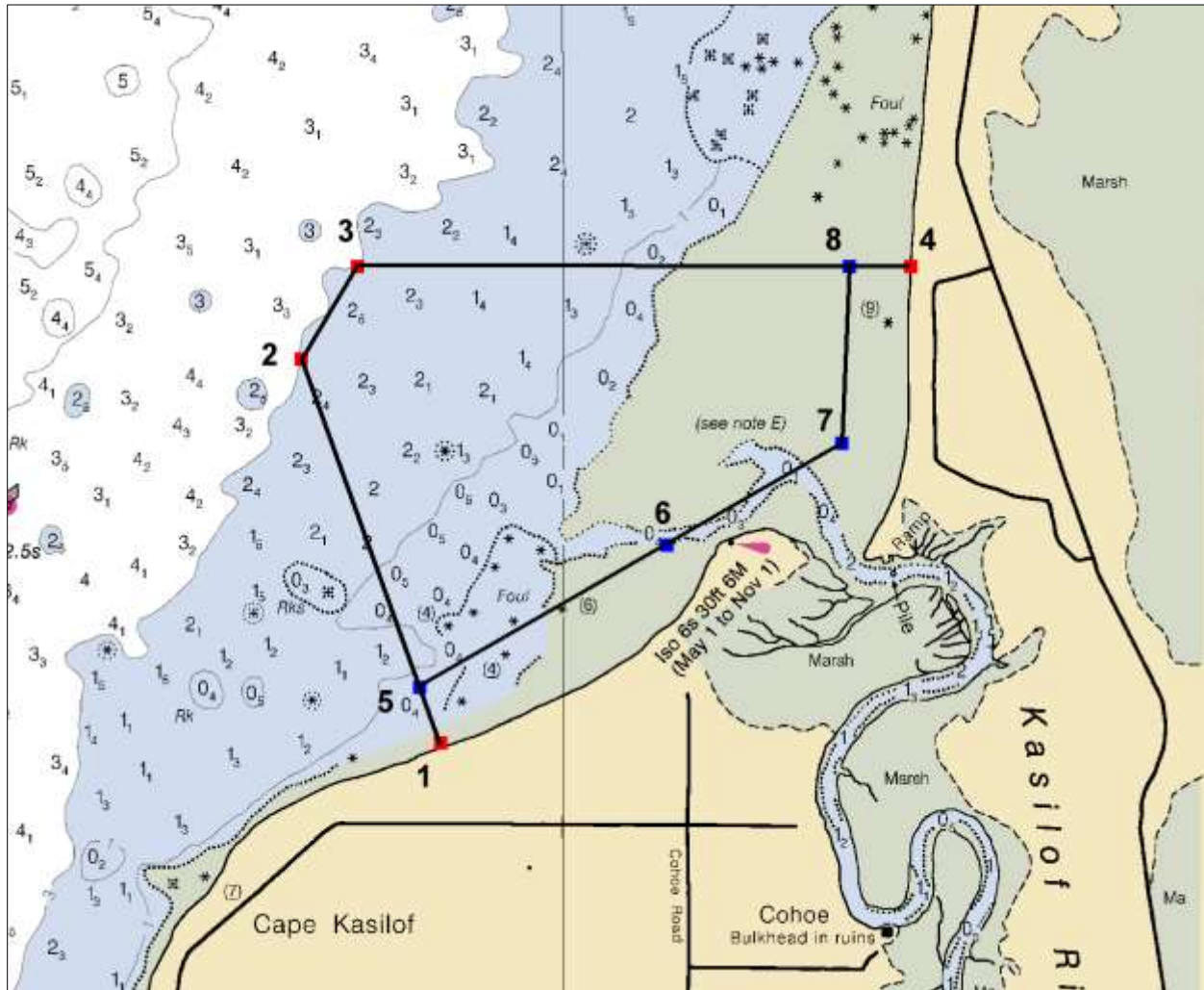


Figure 1.—Map of the Kasilof River Special Harvest Area with waypoint boundaries.

Waypoints 1- 4 depict the KRSHA boundary.

Waypoint 1: 60° 22.59' N. lat. 151° 20.79' W. long.

Waypoint 2: 60° 23.83' N. lat. 151° 21.70' W. long.

Waypoint 3: 60° 24.13' N. lat. 151° 21.34' W. long.

Waypoint 4: 60° 24.13' N. lat. 151° 17.72' W. long.

Waypoints 5-8 depict the boundary between the shoreside waters open to set gillnets, and outer waters open to drift gillnets of the KRSHA.

Waypoint 5: 60° 22.77' N. lat. 151° 20.93' W. long.

Waypoint 6: 60° 23.23' N. lat. 151° 19.31' W. long.

Waypoint 7: 60° 23.56' N. lat. 151° 18.17' W. long.

Waypoint 8: 60° 24.13' N. lat. 151° 18.12' W. long.

Waters upstream of the regulatory markers on the Kasilof River mouth are closed to all commercial fishing.

COVID-19

Under Alaska's Health Advisories 1, 2, 3, and 4, commercial fishing is an Essential Business and is part of Alaska's Essential Services and Critical Infrastructure. Commercial fishermen should ensure that all travel and other activities in support of commercial fishing operations follow protocols in Alaska COVID-19 Health Advisories. COVID-19 Health Advisories maybe found here: <https://covid19.alaska.gov/health-advisories/>.