

Division of Commercial Fisheries
Sam Rabung, Director

Headquarters Office
PO Box 115526
Juneau, AK 99811-5526



Alaska Department of Fish and Game
Doug Vincent-Lang, Commissioner

PO Box 115526
Juneau, AK 99811-5526
www.adfg.alaska.gov

Advisory Announcement

Released: April 12, 2021

CONTACT:

Jeff Estensen, Area Management Biologist
Christy Gleason, Asst. Area Management Biologist
(907) 459-7274

2021 Tolovana River Drainage Subsistence Pike Fishery Announcement #1 **Chatanika Harvest Area**

Districts Affected: Upper Yukon Area

Chatanika Harvest Area

Effective 12:01 a.m. Friday, April 16, subsistence fishing for northern pike within the Chatanika Harvest Area (see map) will close for the remainder of the ice fishing season this spring.

The Chatanika Harvest Area is located on the Chatanika River from one river mile upstream from the confluence of Goldstream Creek to the Fairbanks Nonsubsistence Area boundary (about 0.8 miles below the Murphy Dome upper boat landing).

The northern pike subsistence fishery harvest limit for this area is 1,500 fish during the period from January 1 until these waters are ice free, according to the Minto Flats Northern Pike Management Plan. Based on recent fishing efforts and catch rates, the department projects that the harvest limit will be reached or exceeded by the effective closure date. **This closure does not affect subsistence pike fishing in the remainder of the Tolovana River drainage permit area.**

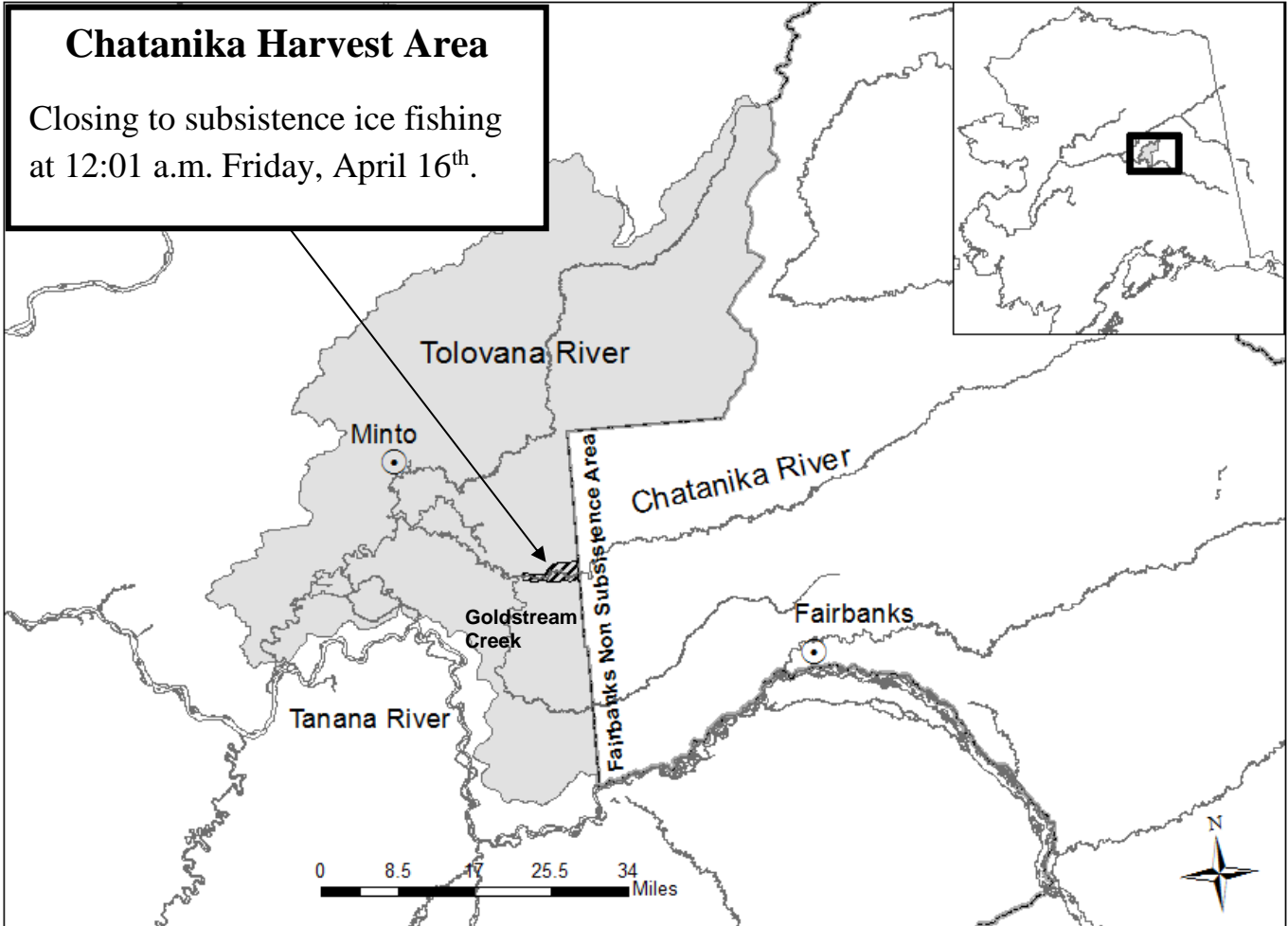
An Alaska Department of Fish and Game (ADF&G) subsistence household harvest permit is required to fish for northern pike in the Tolovana River drainage, and household members must have that permit in possession when participating in the fishery. Permits are available at www.adfg.alaska.gov/store or at the Fairbanks ADF&G office at 1300 College Road. For each week a permit holder fishes in the Chatanika Harvest Area, a catch report is required (even if catch is zero) by 4:30 P.M. Thursdays at www.adfg.alaska.gov/harvest or call 459-7388.

If you have any questions regarding this report, please call the ADF&G office in Fairbanks at 459-7274.

COVID-19

Under Alaska's Health Advisories 1, 2, 3, and 4, subsistence and commercial fishing are Essential Business and activities and are part of Alaska's Essential Services and Critical Infrastructure. Subsistence and commercial fishermen should ensure that all travel and other activities in support of fishing operations follow protocols in Alaska COVID-19 Health Advisories. COVID-19 Health Advisories may be found here:

<https://covid19.alaska.gov/health-advisories/>



Map of the Chatanika Harvest Area closure within the Tolovana River drainage subsistence permit area. The permit area is shown in gray.

-end-