

Division of Commercial Fisheries
Sam Rabung, Director

Homer Area Office
3298 Douglas Place
Homer, AK 99603



Alaska Department of Fish and Game
Doug Vincent-Lang, Commissioner

PO Box 115526
Juneau, AK 99811-5526
www.adfg.alaska.gov

Advisory Announcement

For Immediate Release: March 5, 2021

CONTACT: Jan Rumble and Elisa Russ
Groundfish Area Management Biologists
(907) 235-8191

Prince William Sound Area Commercial Shrimp Pot Fishery Guideline Harvest Level, Registration Deadline, Season Opening Date, and Survey Results Emergency Order # 2-SF-E-02-21

The Prince William Sound (PWS) commercial shrimp pot fishing season will open at 8:00 a.m. April 15, 2021 with a guideline harvest level (GHL) of 70,000 lb. The fishery will be open only in waters designated as Area 3, which are indicated on the attached map (Figure 1).

All participants must possess a 2021 P09E or P91E interim use permit available from the Commercial Fisheries Entry Commission (CFEC) and a PWS area vessel registration. CFEC permit forms are available at http://www.cfec.state.ak.us/forms/Commercial_Fishing_Permit_Application.pdf or paper forms at Alaska Department of Fish and Game (ADF&G) offices.

Due to the COVID-19 pandemic, ADF&G encourages the public to ask questions by phone (Jan Rumble at 907-321-1569 or Homer office at 907-235-8191) and to complete registrations by phone and e-mail or fax during regular business hours. If registrations must be completed in person, they are available in ADF&G offices in Homer, Cordova, Anchorage, and Soldotna.

The registration deadline for the PWS shrimp pot fishery is 5:00 p.m. April 1. The number of shrimp pots that may be operated from a vessel registered for the fishery will be announced in early April.

ADF&G conducts an annual longline pot survey on spot shrimp in PWS. The results from this survey along with the fishery performance from the commercial and noncommercial fisheries are used in a surplus production model to determine the annual total allowable harvest (TAH). This TAH level needs to exceed 110,000 lb for a commercial fishery to be prosecuted, which has occurred for the past 12 years, following the adoption of the management plan and reopening of the commercial fishery. The figures in this document indicate the survey location (Figure 2), the average total weight of spot shrimp per pot or catch per unit effort (CPUE) for all sizes of shrimp, CPUE of shrimp with a carapace length of 32 mm or greater for all areas surveyed (Figure 3), and the CPUE for both of these groups for the three different management areas (1, 2, and 3; Figure 4). Survey results indicate a healthy shrimp population with very good recruitment. Please contact Jan Rumble (907-321-1569) with questions.

Fishery management and other pertinent regulations are found in Chapters 31 and 39 of the **2019-2021 Statewide Commercial Shrimp, Dungeness Crab, and Miscellaneous Shellfish** book, available online at <http://www.adfg.alaska.gov/index.cfm?adfg=fishregulations.commercial> or at ADF&G offices. Prospective fishery participants should thoroughly review the regulatory requirements for this fishery.

ADF&G will be holding a preseason teleconference on March 18 at 12:00 noon to 1:00 p.m. Staff will discuss season plans, fishery requirements, survey results, logbooks, and answer questions about the upcoming season. Please contact Jan at janet.rumble@alaska.gov to get conference information.

COVID-19

Under Alaska's Health Orders 5, 6, and 8, commercial fishing is an Essential Business and is part of Alaska's Essential Services and Critical Infrastructure. Commercial fishermen should ensure that all travel and other activities in support of commercial fishing operations follow protocols in Alaska COVID-19 Health Orders. COVID-19 Health Orders may be found here: <https://covid19.alaska.gov/health-order/>.

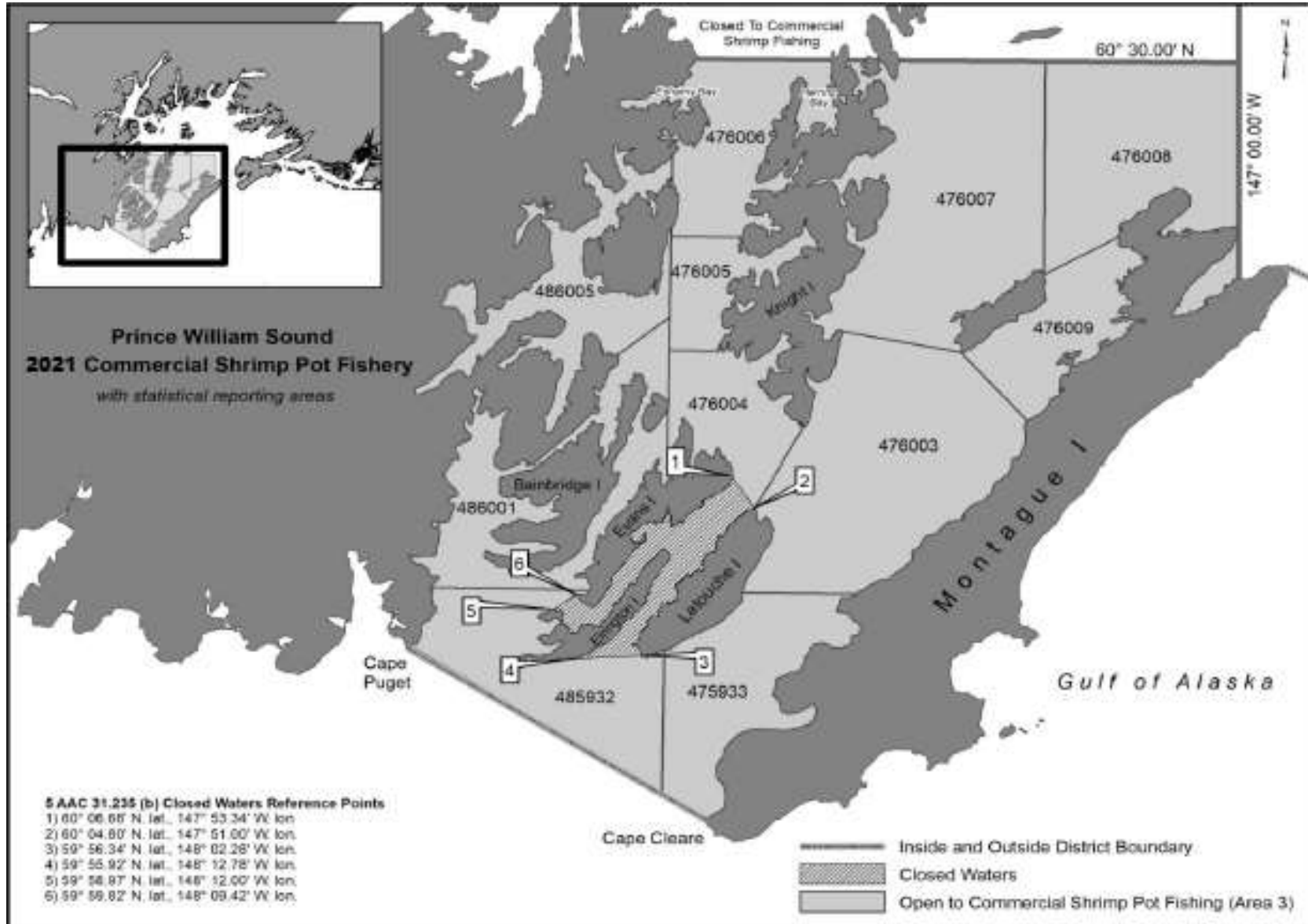


Figure 1.–2021 Prince William Sound Area shrimp pot fishery Area 3.

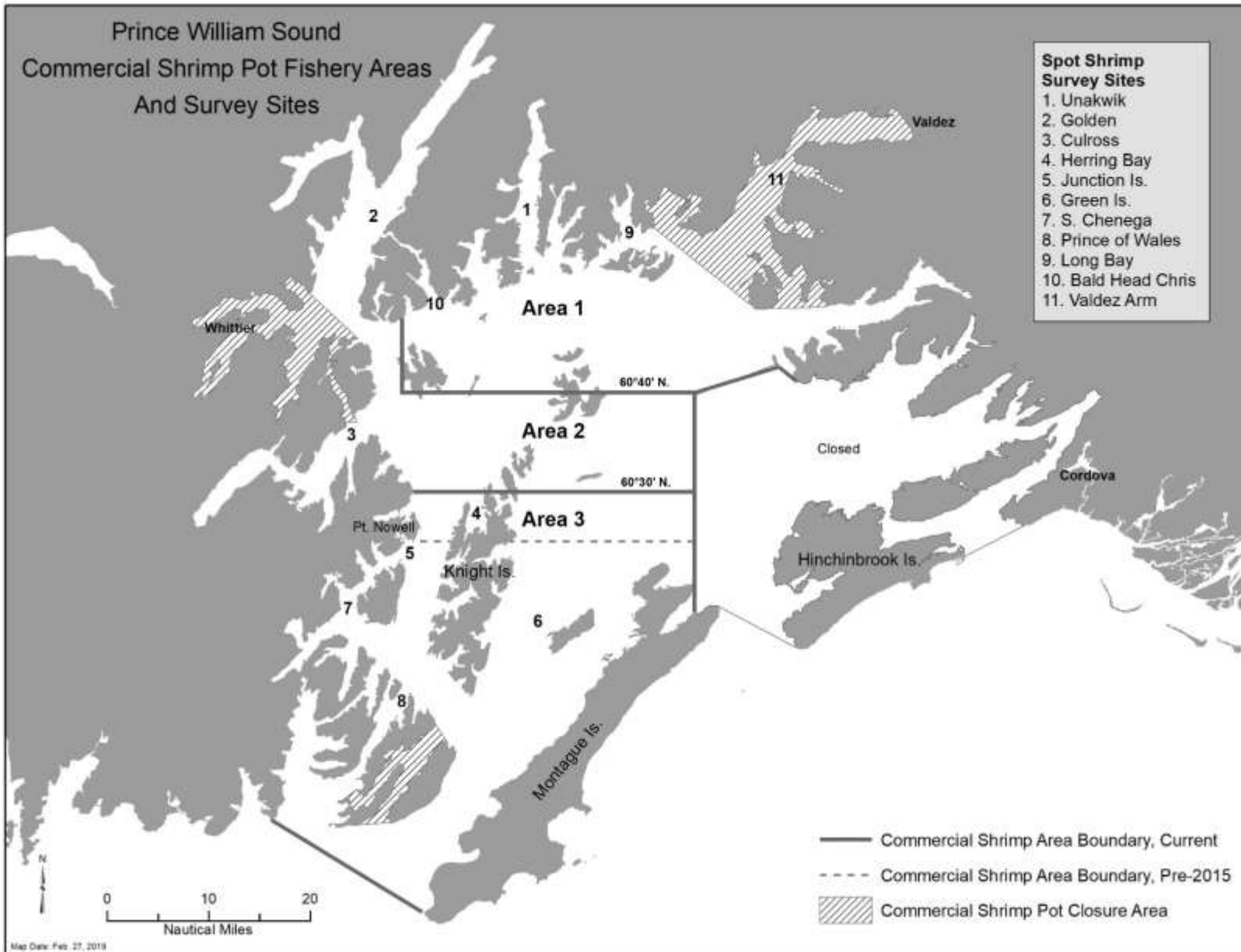


Figure 2.— Shrimp pot survey sites and three commercial management areas in Prince William Sound.

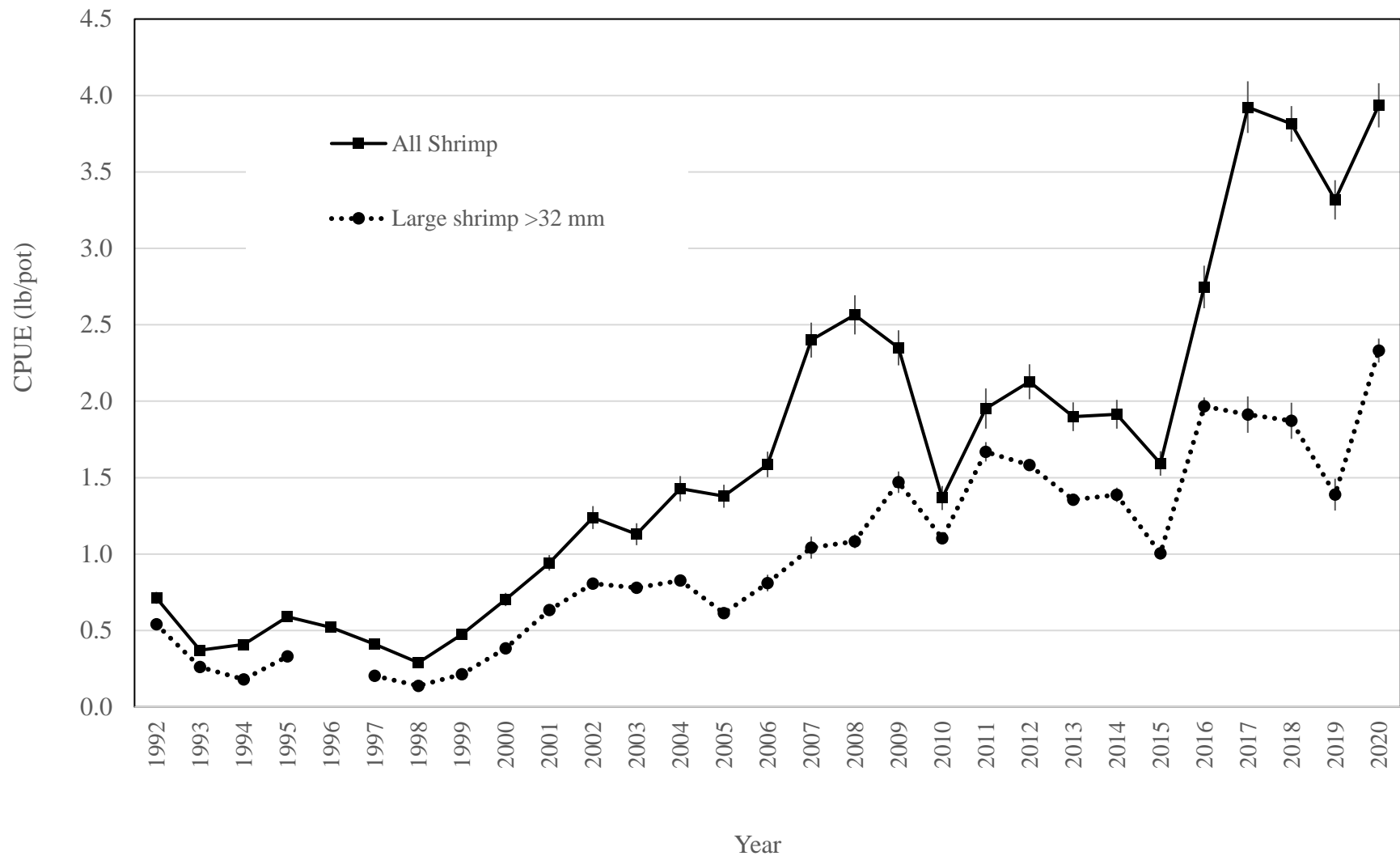


Figure 3.—Prince William Sound spot shrimp survey average catch per unit effort (CPUE) for all spot shrimp and large spot shrimp (equal to or greater than 32 mm in carapace length), 1992–2020.

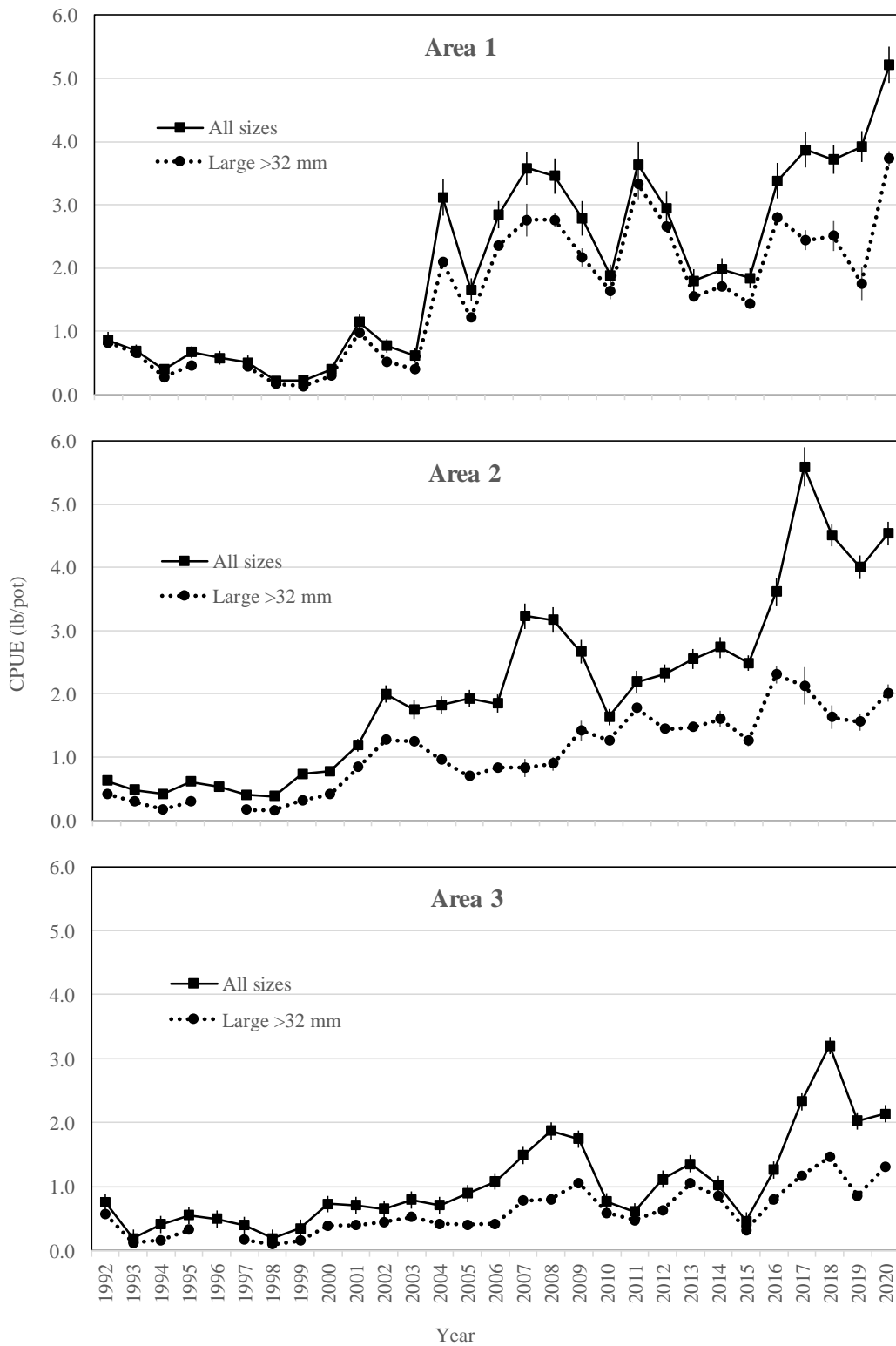


Figure 4.—Prince William Sound spot shrimp survey average catch per unit effort (CPUE) for all spot shrimp and large shrimp (>32 mm carapace length) in three management areas 1, 2, and 3.