

Division of Commercial Fisheries
Sam Rabung, Director

Region I, Petersburg Area Office
PO Box 667
Petersburg, AK 99833



Alaska Department of Fish and Game
Doug Vincent-Lang, Commissioner

PO Box 115526
Juneau, AK 99811-5526
www.adfg.alaska.gov

Advisory Announcement
For Immediate Release: February 23, 2021

CONTACT: Troy Thynes
Region I Management Coordinator
(907) 772-3801

2021 SOUTHEAST ALASKA EULACHON SMELT FISHERY ANNOUNCEMENT

The following areas will be closed to fishing for eulachon smelt (*Thaleichthys pacificus*) for the 2021 season. These closures will be in effect beginning 12:01 a.m., Thursday, February 25, 2021:

District 1: will be closed to commercial, personal use, and subsistence eulachon smelt fishing in all waters. This includes all Revillagigedo Island and mainland drainages;

District 7: will be closed to commercial, personal use, and subsistence eulachon smelt fishing in all waters;

District 8: will be closed to commercial eulachon fishing. **Subsistence and personal use fishing for eulachon smelt will remain open.**

Eulachon smelt spawning runs in the southern portions of Southeast Alaska have had large fluctuations in recent years and continue to show poor returns to many areas with traditional runs of eulachon smelt.

Stock status information for each of the above areas is limited and a conservative approach is necessary for sustaining and rebuilding the health of these stocks.

The Emergency Order corresponding with this announcement is EO 1H0121.

Under Alaska's Health Advisories 1, 2, 3, and 4, commercial fishing is an Essential Business and is part of Alaska's Essential Services and Critical Infrastructure. Commercial fishermen should ensure that all travel and other activities in support of commercial fishing operations follow protocols in Alaska COVID-19 Health Advisories. COVID-19 Health Advisories may be found here: <https://covid19.alaska.gov/health-advisories/>.

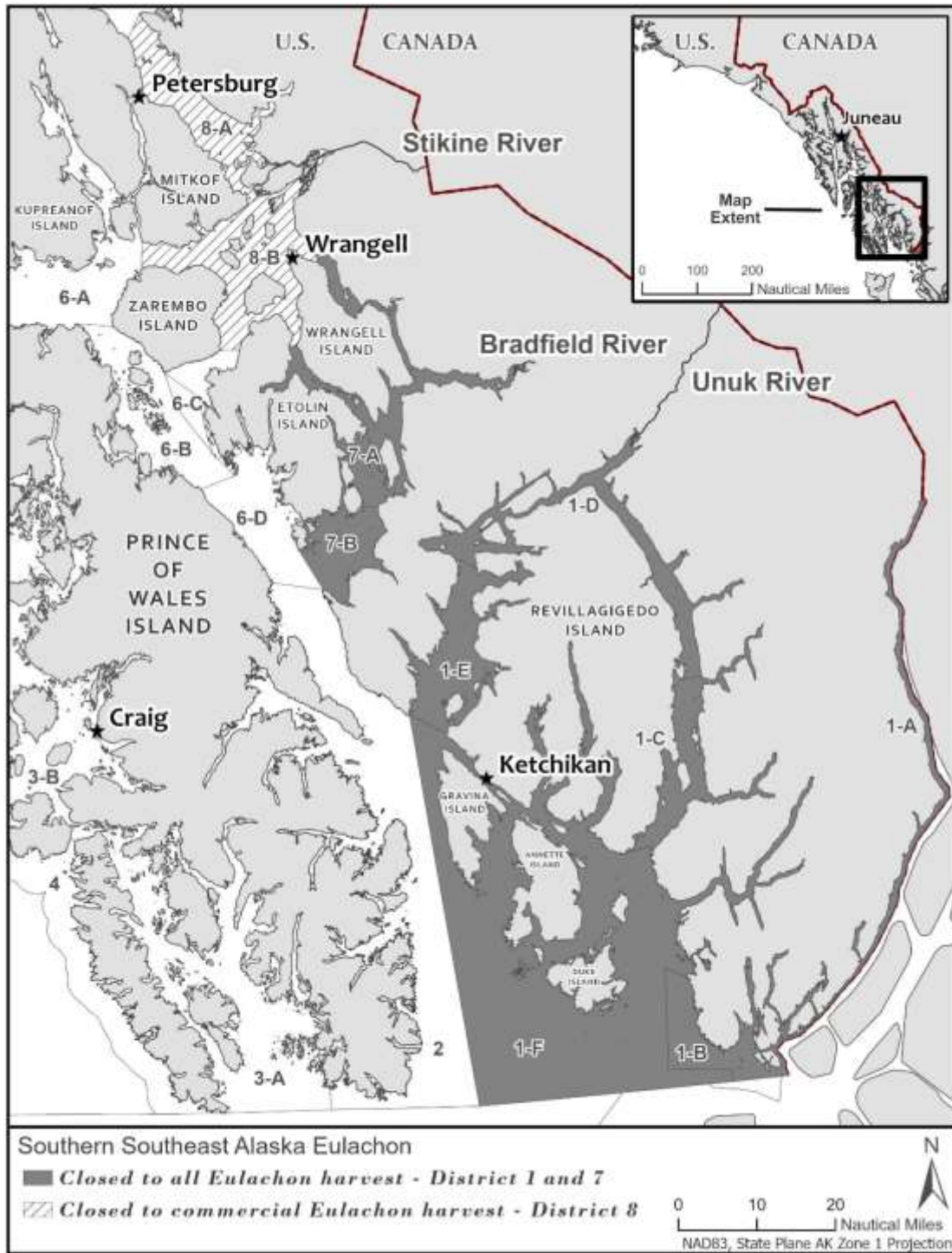


Figure 1. Map of Southern Southeast Eulachon closures.

Advisory Announcement web site: <http://www.adfg.alaska.gov/index.cfm?adfg=cfnews.main>.

Office	Ketchikan	Petersburg	Wrangell	Sitka	Juneau	Haines	Yakutat
ADF&G	225-5195	772-3801		747-6688	465-4250	766-2830	784-3255
AWT	225-5111	7723983	874-3215	747-3254	465-4000	766-2533	784-3220