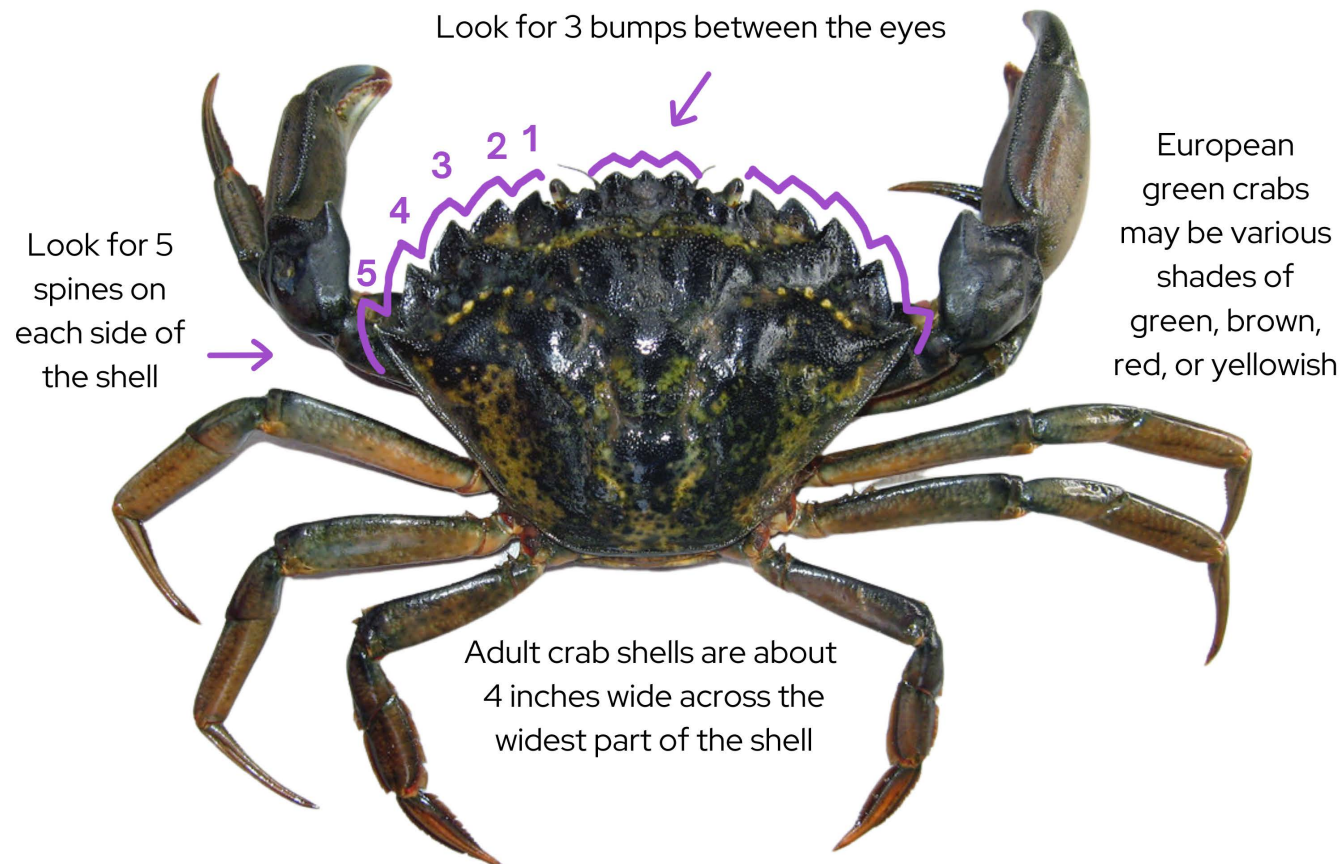


# FOUND IN SOUTHEAST ALASKA INVASIVE EUROPEAN GREEN CRAB

## How to identify a European green crab?



## Native crabs found in Southeast Alaska

GREEN SHORE CRAB



HAIRY HELMET CRAB



## SPOTTED A EUROPEAN GREEN CRAB? NOW WHAT?

### FIND IT

If you find a European green crab, do not throw it back alive!

### CONTAIN IT

Keep it in a container with the date and location you found it.

### PHOTOGRAPH IT

Photos help with identification. Take a photo of the top of the crab shell then submit the photo to ADF&G.

### FREEZE IT

Freeze it or preserve it with rubbing alcohol.

### REPORT IT

Call the free statewide invasive species hotline at 1 (877) INVASIV. We need the collected crab to confirm its identification.

## SALMON AND SHELLFISH HABITAT IS DESTROYED BY EUROPEAN GREEN CRABS.



Scan the QR Code or call the invasive species hotline at 1-877-INVASIV to report observations of any invasive, nonnative species, or unusual plants or animals.