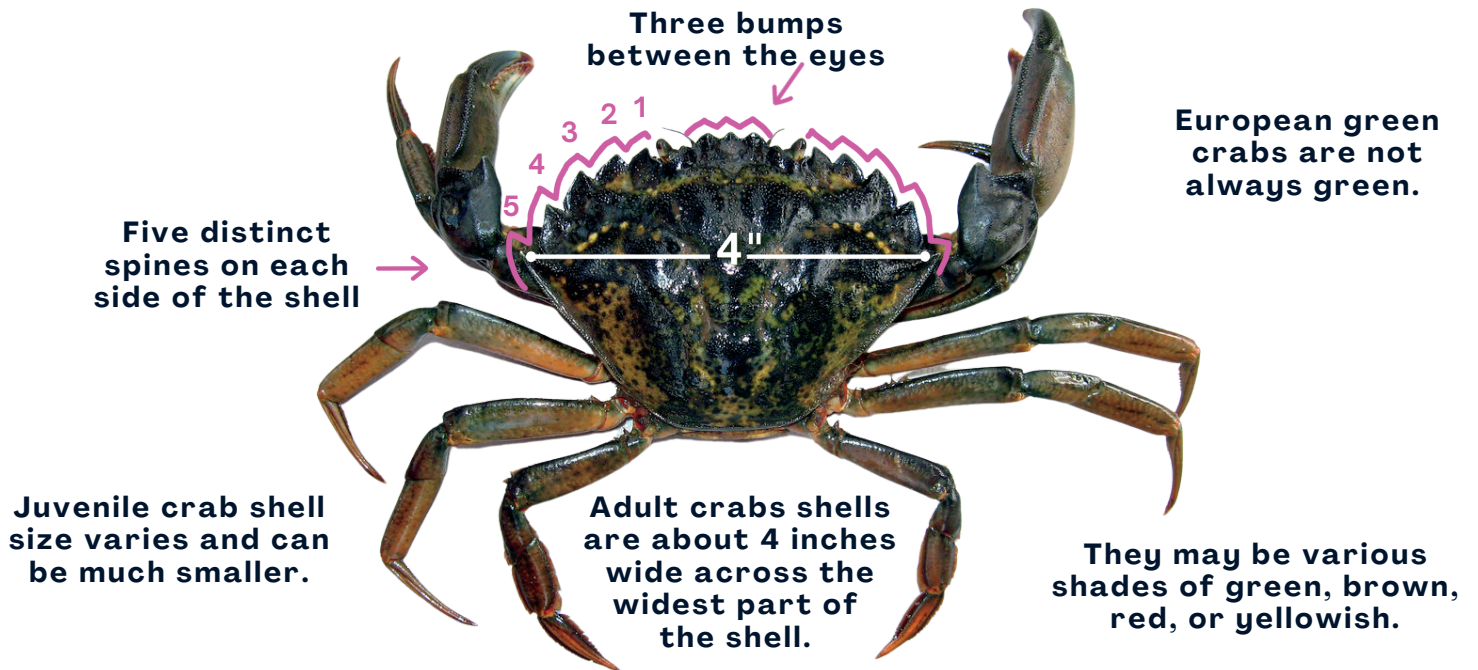


FOUND IN SOUTHEAST ALASKA

INVASIVE EUROPEAN GREEN CRAB

Salmon and shellfish habitat is destroyed by European green crabs.

How to Identify a European Green Crab



Spotted a European Green Crab? Now what do you do?

- Take multiple photos of the live crab or the crab shell. Collection and transport is prohibited.
- Note the number of crabs, the location (GPS coordinates or landmarks), and type of habitat.
- Report immediately to the Alaska Department of Fish & Game 1 (877) INVASIV.

NATIVE CRABS THAT LOOK SIMILAR TO EUROPEAN GREEN CRABS



Green Shore Crab

Three spines on each side of shell and only two bumps between the eyes.

Adults are not larger than 1.5 inches wide across the widest part of the shell.



Red Rock Crab

Greater than 5 spines on either side of the shell.

Adult are about 6.5 inches at the widest part of the shell. Their shell is dark red and fan shaped.

It is illegal to release nonnative and invasive species into Alaska waters or lands.



Scan the QR Code or call the invasive species hotline at 1-877-INVASIV to report observations of any invasive, nonnative species, or unusual plants or animals.

