

Kuskokwim River Salmon Management Working Group

1 (800) 315-6338 (MEET) Code: 58756# (KUSKO)

ADF&G Bethel toll free: 1 (855) 933-2433

Meeting Agenda

Date: 08/08/2015

Time: 10:00am

Place: Bethel

Time Called to Order:

Chair: Fritz Charles

ROLL CALL TO ESTABLISH QUORUM:

QUORUM MET? Yes / No

Upriver Elder:

Processor:

Downriver Elder:

Member at Large:

Commercial Fisher:

Sport Fisher:

Lower River Subsistence:

Western Interior RAC:

Middle River Subsistence:

Y-K Delta RAC:

Upper River Subsistence:

ADF&G:

Headwaters Subsistence:

INTRODUCTIONS:

INVOCATION:

APPROVAL OF AGENDA: *the agenda may be amended at this time.*

APPROVAL OF MINUTES: *Optional. ADF&G does not prepare official meeting minutes.*

PEOPLE TO BE HEARD:

CONTINUING BUSINESS:

- ADF&G Management Actions under consideration
- Overview of Kuskokwim River salmon run assessment\ discussion of ADF&G considerations:
 - a. Test Fisheries (Bethel and Aniak):
 - b. Weirs/Mark-Recapture/Aerial Surveys/Other:
- Subsistence Reports: Lowest river, ~~ONC Inseason Subsistence Report~~, Lower River, Middle River, Upper River, Headwaters.
 - USFWS Subsistence Report
- Commercial Catch Report:
- Processor Report:
- Sport Fish Report:
- Intercept Fishery Report: *optional*
- Weather Forecast:
- Discussion of ADF&G Management considerations and discussion of possible alternatives (recommendations from the Working Group):
- Motion for Discussion and Action:

OLD BUSINESS:

NEW BUSINESS:

COMMENTS FROM WORKING GROUP MEMBERS:

NEXT MEETING DATE: _____ **Time:** _____ **Place:** _____

Informational Packet

Information Packets *ARE*:

- **Intended to help inform Working Group discussions.**
- **To be viewed and used in context with Working Group meetings only.**

Packets *ARE NOT*:

- **To be viewed as standalone documents.**
- **A final say on fisheries management decisions.**

Please use this information responsibly:

Packet information is an incomplete snapshot of an ongoing discussion and changing conditions. Packet information should not be reproduced for any purpose other than to describe Working Group meeting discussions.

Misuse of Packet information can contribute to misunderstandings that can **cause harm to salmon users** and potentially **damage salmon resources**.

Ask Questions: ADF&G staff will be happy to answer biology and management questions. Please call **1-855-933-2433** to reach ADF&G Kuskokwim Area staff.

Attend Meetings: Each Working Group meeting is announced at least 48 hours prior to time and date of meeting. In addition, each meeting is recorded. Recordings can be found here:
http://www.adfg.alaska.gov/index.cfm?adfg=commercialbyarea_kuskokwim.kswg

Viewing the information packet while listening to meetings/recordings will provide a better understanding of the information presented in this packet.

Thank you.
Jennifer Peeks
Chris Shelden
Working Group coordinators

Informational Packet

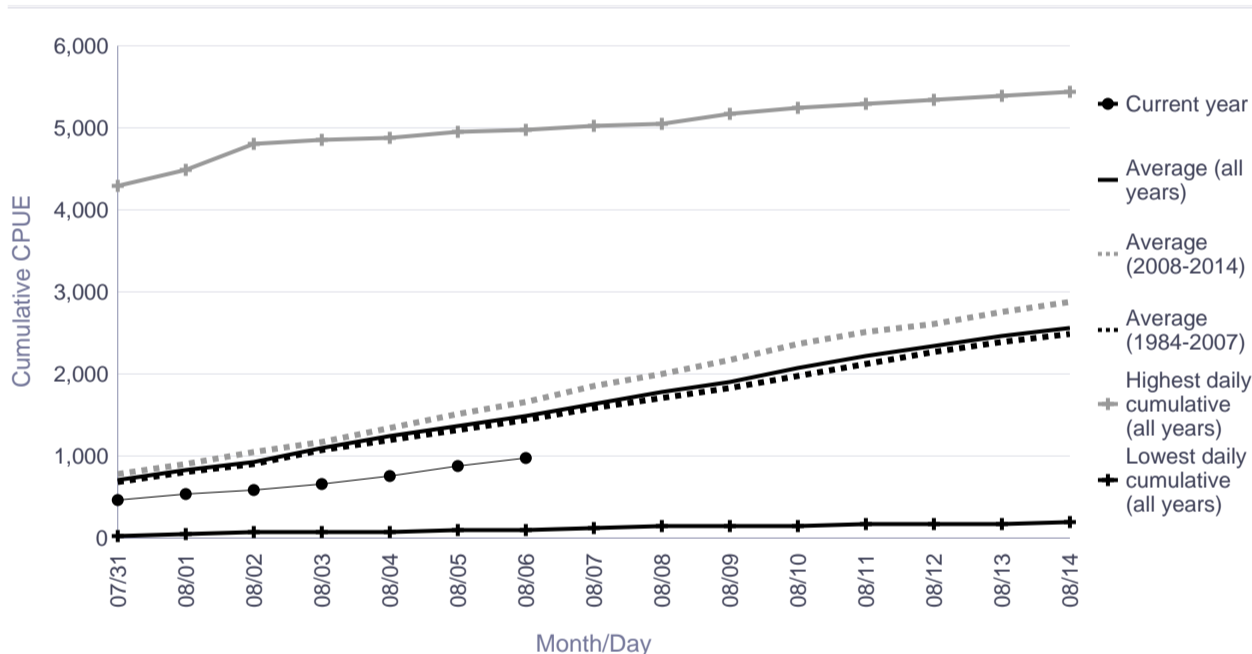
*To access BTF and weir data online, please visit: <http://www.adfg.alaska.gov/index.cfm?adfg=commercialbyareakuskokwim.salmon#fishcounts>

Bethel Test Fishery Coho Salmon Cumulative CPUE Index

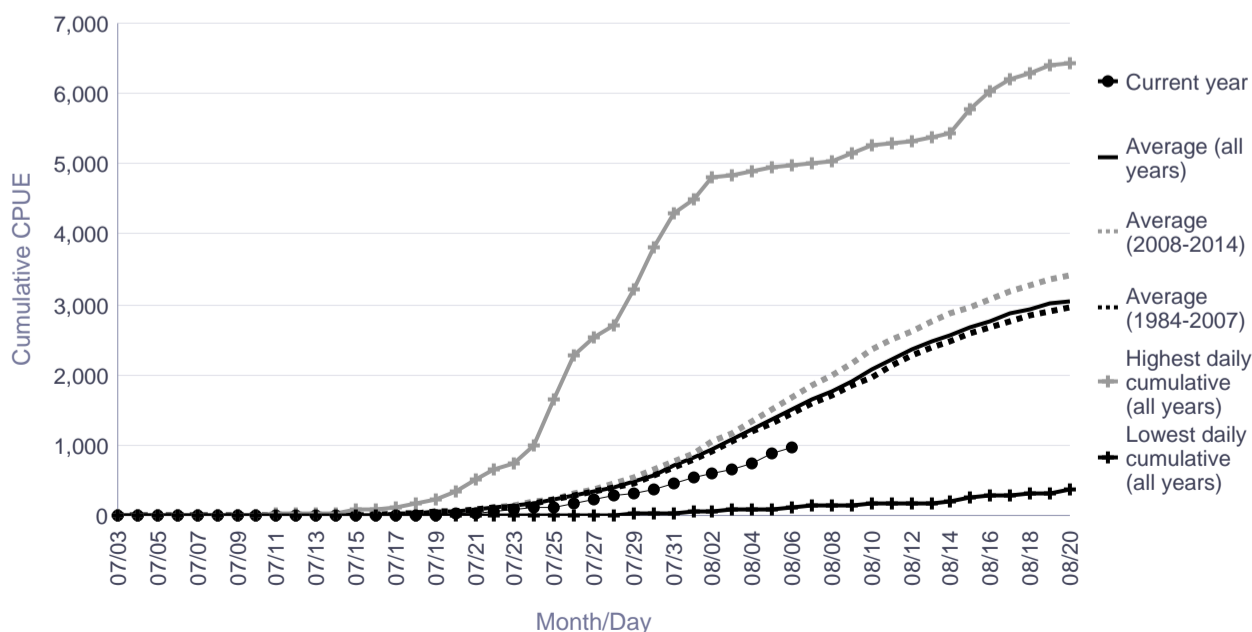
Date	Lowest daily cumulative (all years)	Average (all years)	Average (1984-2007)	Average (2008-2014)	Highest daily cumulative (all years)	Current year
07/31	35	706	686	776	4,299	461
08/01	48	830	810	897	4,485	531
08/02	69	939	910	1,042	4,807	601
08/03	77	1,091	1,066	1,176	4,845	661
08/04	89	1,237	1,209	1,333	4,880	756
08/05	99	1,361	1,314	1,522	4,959	872
08/06	105	1,502	1,453	1,669	4,985	972
08/07	135	1,647	1,586	1,855	5,012	
08/08	139	1,774	1,707	2,005	5,037	
08/09	147	1,913	1,839	2,167	5,157	
08/10	162	2,066	1,980	2,360	5,251	
08/11	164	2,217	2,134	2,503	5,289	
08/12	180	2,354	2,276	2,623	5,328	
08/13	184	2,471	2,387	2,757	5,391	
08/14	192	2,573	2,487	2,871	5,435	

	Lowest CPUE	Average CPUE (all years)	Average CPUE (1984-2007)	Average CPUE (2008-2014)	Highest CPUE
Season Total	423	3,294	3,203	3,606	7,183

Focused Two-Week Data View



Season Total Overview



Informational Packet

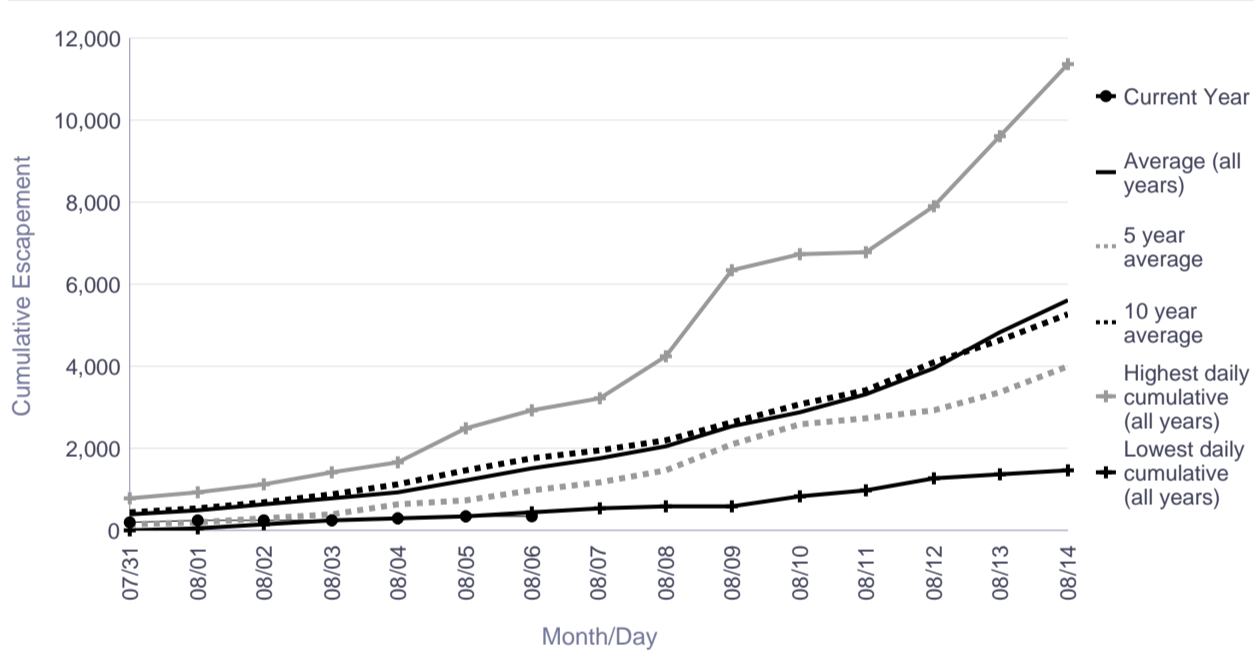
Kwethluk River Salmon Monitoring Project Cumulative Daily Passage of Coho Salmon

Escapement Goal Range: >19,000

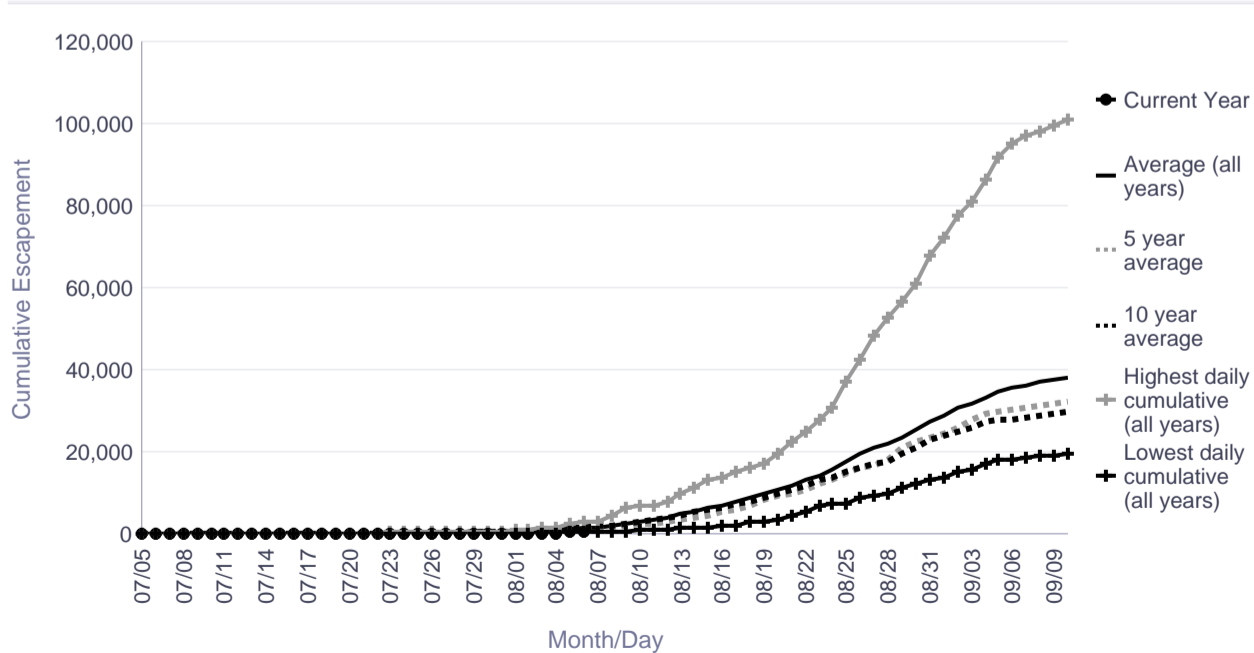
Date	Lowest daily cumulative (all years)	Average (all years)	5 year average	10 year average	Highest daily cumulative (all years)	Current Year
07/31	31	411	163	470	775	224
08/01	74	500	213	564	927	231
08/02	170	637	304	714	1,142	241
08/03	263	781	412	869	1,419	250
08/04	308	957	653	1,126	1,670	320
08/05	344	1,216	742	1,446	2,495	328
08/06	467	1,527	998	1,746	2,948	350
08/07	525	1,778	1,198	1,976	3,201	
08/08	572	2,063	1,481	2,225	4,268	
08/09	617	2,533	2,088	2,625	6,358	
08/10	859	2,878	2,594	3,074	6,748	
08/11	971	3,341	2,738	3,434	6,772	
08/12	1,271	3,950	2,956	4,090	7,908	
08/13	1,351	4,837	3,364	4,637	9,602	
08/14	1,452	5,636	4,014	5,254	11,368	

	Lowest Count	Average Count	5 Year Average	10 Year Average	Highest Count
Season Total	19,473	39,467	34,213	30,108	107,789

Focused Two-Week Data View



Season Total Overview



Informational Packet

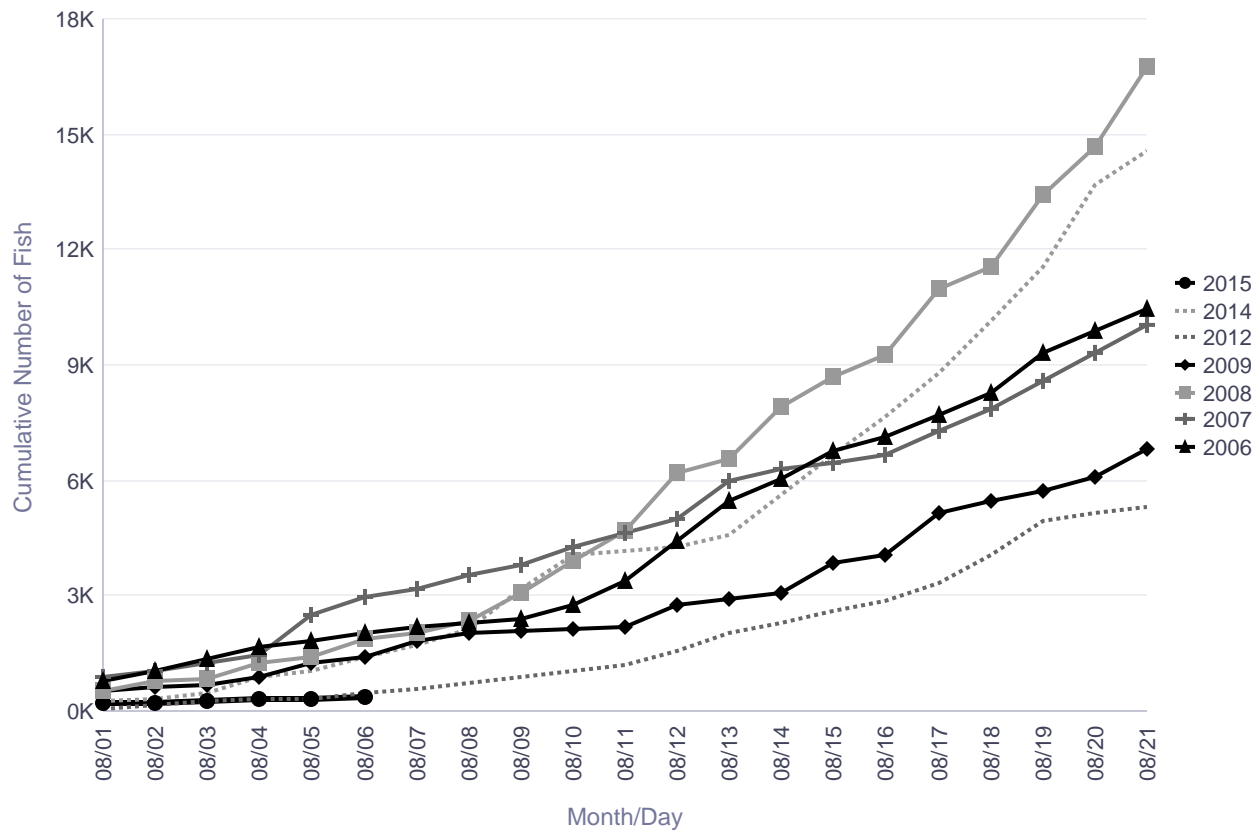
Kwethluk River Weir Historical Cumulative Daily Passage of Coho Salmon

	Cumulative Daily Passage									
Date	2006	2007	2008	2009	2010	2011	2012	2013	2014	2015
08/04	1,670	1,447	1,259	873			308		894	320
08/05	1,806	2,495	1,427	1,263			344		1,037	328
08/06	2,022	2,948	1,885	1,424			467		1,425	350
08/07	<u>2,190</u>	<u>3,201</u>	<u>2,054</u>	<u>1,814</u>			<u>591</u>		<u>1,701</u>	
08/08	2,293	3,527	2,336	2,031			731		2,127	
08/09	2,424	3,801	3,081	2,065			879		3,194	
08/10	2,749	4,289	3,885	2,134			1,023		4,061	
08/11	3,401	4,657	4,678	2,192			1,200		4,173	

Escapement Goal Range: > 19,000
Highlighted years below are when escapement goal was achieved or exceeded.

	2006	2007	2008	2009	2010	2011	2012	2013	2014	2015
Season Total	25,667	19,473	48,049	21,911			20,895		43,945	

Kwethluk River Coho



There are no comments for the past three days.

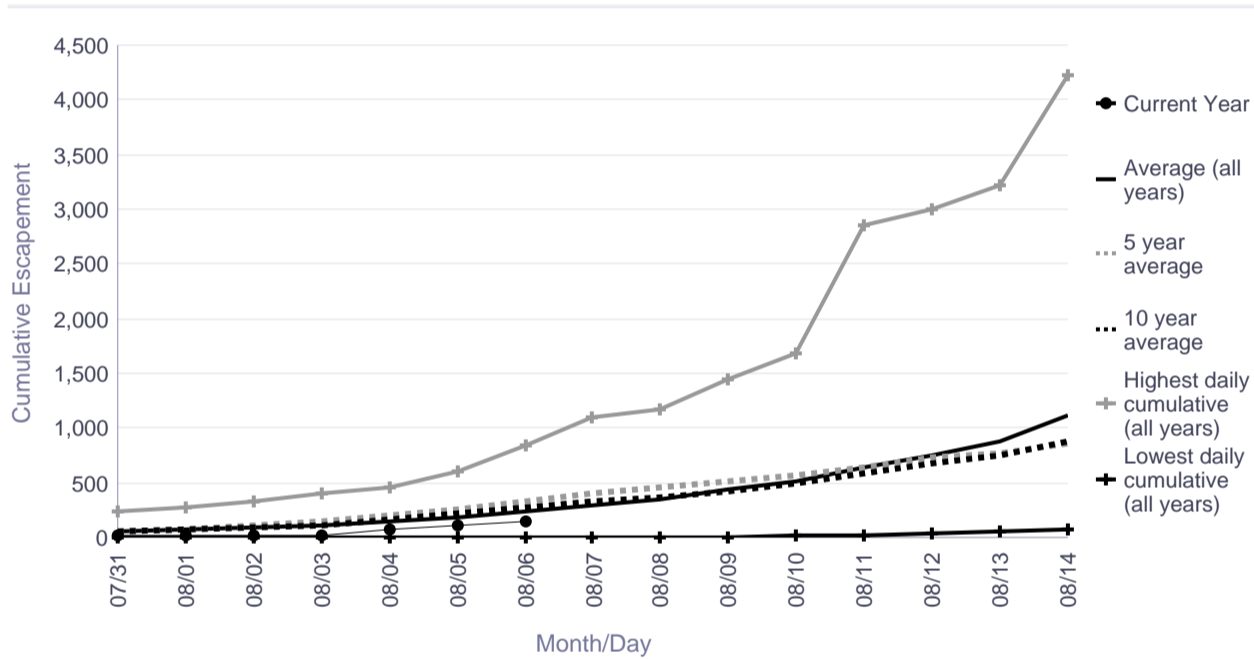
Informational Packet

Tuluksak River Salmon Monitoring Project Cumulative Daily Passage of Coho Salmon

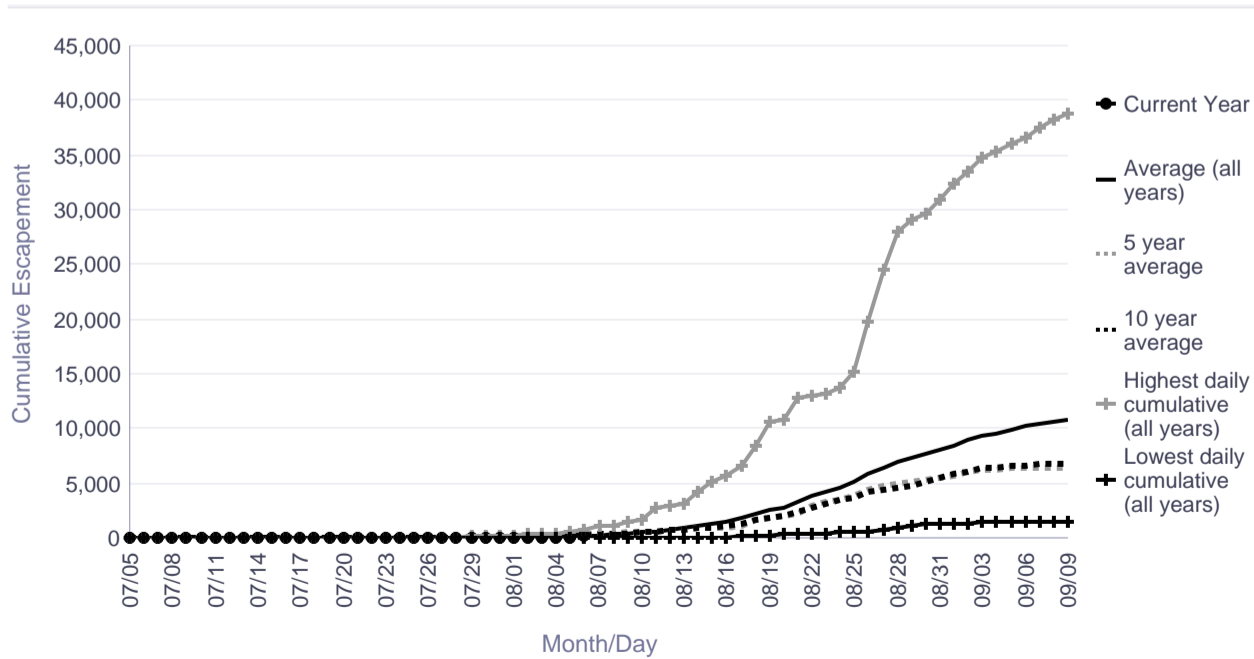
Date	Lowest daily cumulative (all years)	Average (all years)	5 year average	10 year average	Highest daily cumulative (all years)	Current Year
07/31	0	57	64	56	237	13
08/01	0	73	85	74	281	16
08/02	0	88	105	90	324	17
08/03	0	110	141	117	399	30
08/04	1	143	197	164	463	78
08/05	3	185	267	224	600	114
08/06	3	244	334	278	837	151
08/07	7	298	402	324	1,107	
08/08	7	356	460	367	1,181	
08/09	10	440	517	428	1,439	
08/10	14	514	578	495	1,686	
08/11	18	651	648	581	2,850	
08/12	34	752	727	684	3,007	
08/13	53	876	770	752	3,211	
08/14	73	1,122	857	881	4,233	

	Lowest Count	Average Count	5 Year Average	10 Year Average	Highest Count
Season Total	1,525	11,144	6,810	6,980	41,071

Focused Two-Week Data View



Season Total Overview



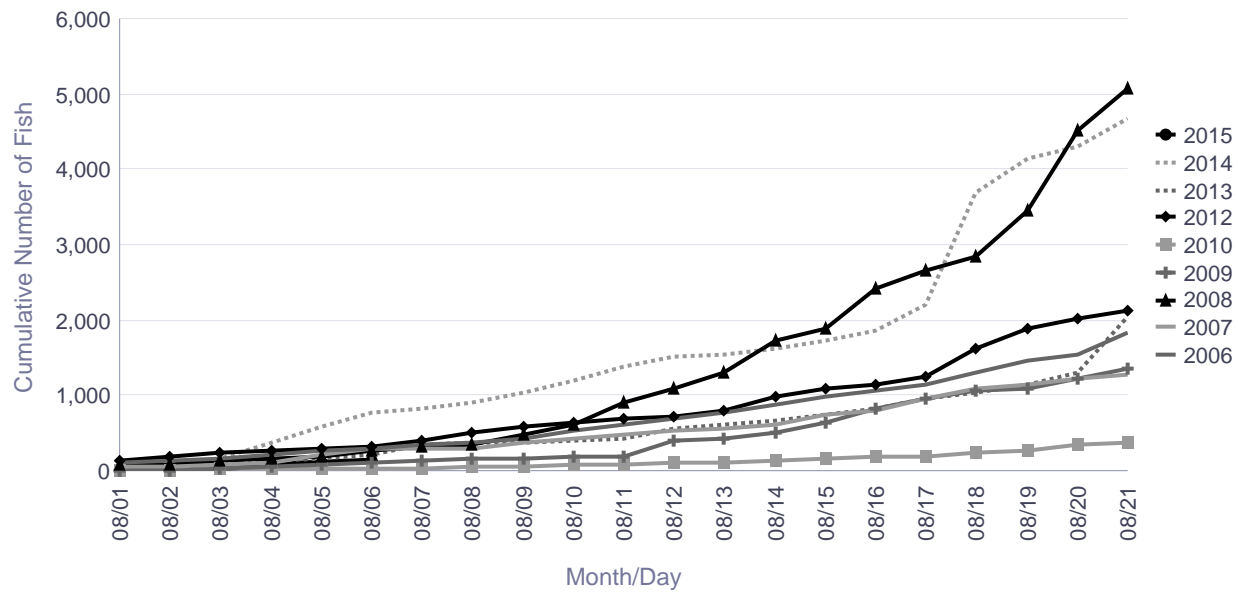
Informational Packet

Tuluksak River Salmon Monitoring Project Cumulative Daily Passage of Coho Salmon

Cumulative Daily Passage										
Date	2006	2007	2008	2009	2010	2011	2012	2013	2014	2015
08/04	222	124	155	68	20		273	131	364	78
08/05	271	223	193	94	23		290	154	600	114
08/06	310	286	271	110	24		318	221	771	151
08/07	<u>342</u>	<u>299</u>	<u>315</u>	<u>131</u>	<u>27</u>		<u>412</u>	<u>339</u>	<u>829</u>	
08/08	385	310	346	155	50		503	375	913	
08/09	430	380	491	165	60		593	388	1,028	
08/10	539	437	605	182	72		631	404	1,205	
08/11	606	478	911	197	81		701	421	1,390	

	2006	2007	2008	2009	2010	2011	2012	2013	2014	2015
Season Total	6,111	2,807	7,457	8,137	1,525		4,407	6,490	13,797	

Tuluksak River Coho



There are no comments for the past three days.

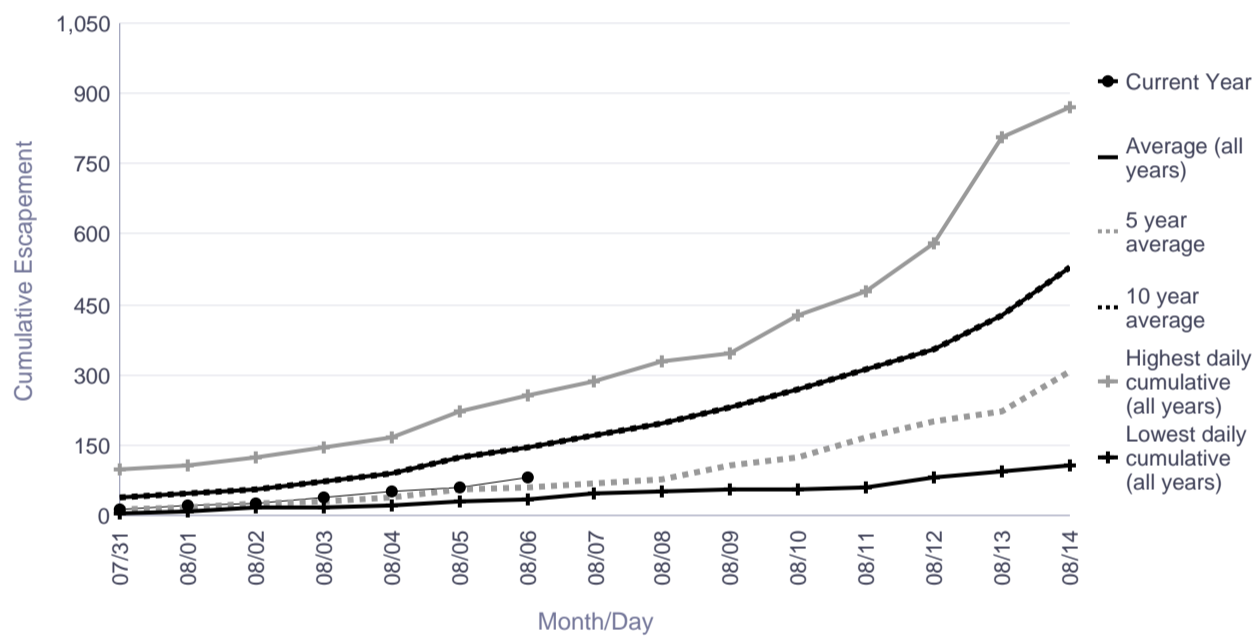
Informational Packet

Salmon River (Aniak) Salmon Monitoring Project Cumulative Daily Passage of Coho Salmon

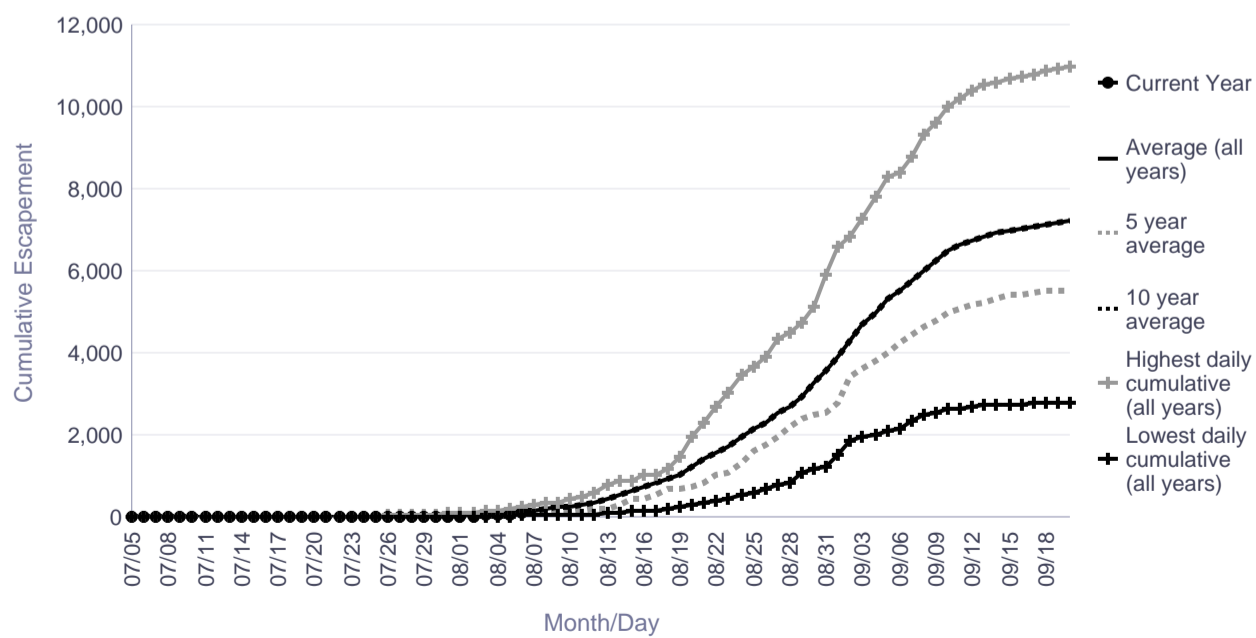
Date	Lowest daily cumulative (all years)	Average (all years)	5 year average	10 year average	Highest daily cumulative (all years)	Current Year
07/31	4	38	12	38	97	15
08/01	10	46	17	46	107	23
08/02	16	58	25	58	126	27
08/03	16	75	29	75	147	38
08/04	21	88	41	88	169	51
08/05	31	122	56	122	222	62
08/06	34	145	60	145	256	83
08/07	47	171	70	171	288	
08/08	50	197	77	197	327	
08/09	55	229	106	229	344	
08/10	58	270	126	270	428	
08/11	62	311	165	311	478	
08/12	80	355	200	355	581	
08/13	93	426	224	426	805	
08/14	108	528	308	528	870	

	Lowest Count	Average Count	5 Year Average	10 Year Average	Highest Count
Season Total	327	5,736	5,526	5,736	10,974

Focused Two-Week Data View



Season Total Overview



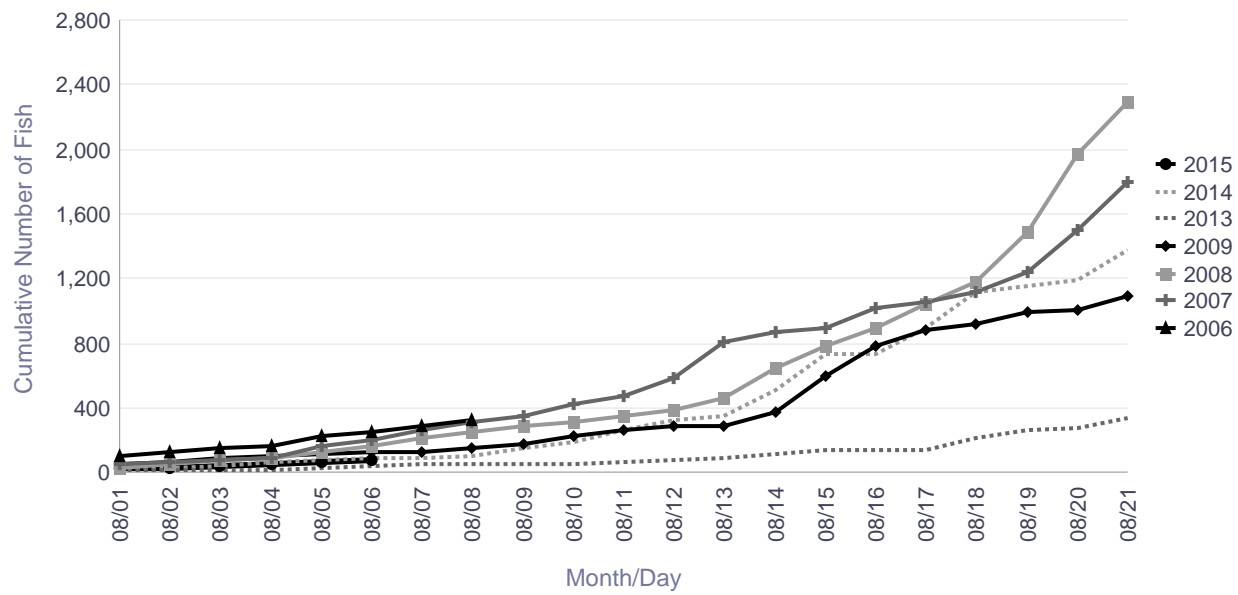
Informational Packet

Salmon River (Aniak) Weir Historical Cumulative Daily Passage of Coho Salmon

Cumulative Daily Passage										
Date	2006	2007	2008	2009	2010	2011	2012	2013	2014	2015
08/04	169	85	91	103				21	61	51
08/05	222	167	123	110				31	81	62
08/06	256	204	166	124				34	86	83
08/07	288	258	211	129				47	93	
08/08	327	308	248	147				50	103	
08/09		344	283	178				55	157	
08/10		428	318	225				58	193	
08/11		478	351	264				62	268	

	2006	2007	2008	2009	2010	2011	2012	2013	2014	2015
Season Total	327	1,860	10,974	6,351				2,797	8,254	

Salmon River (Aniak) Coho



There are no comments for the past three days.

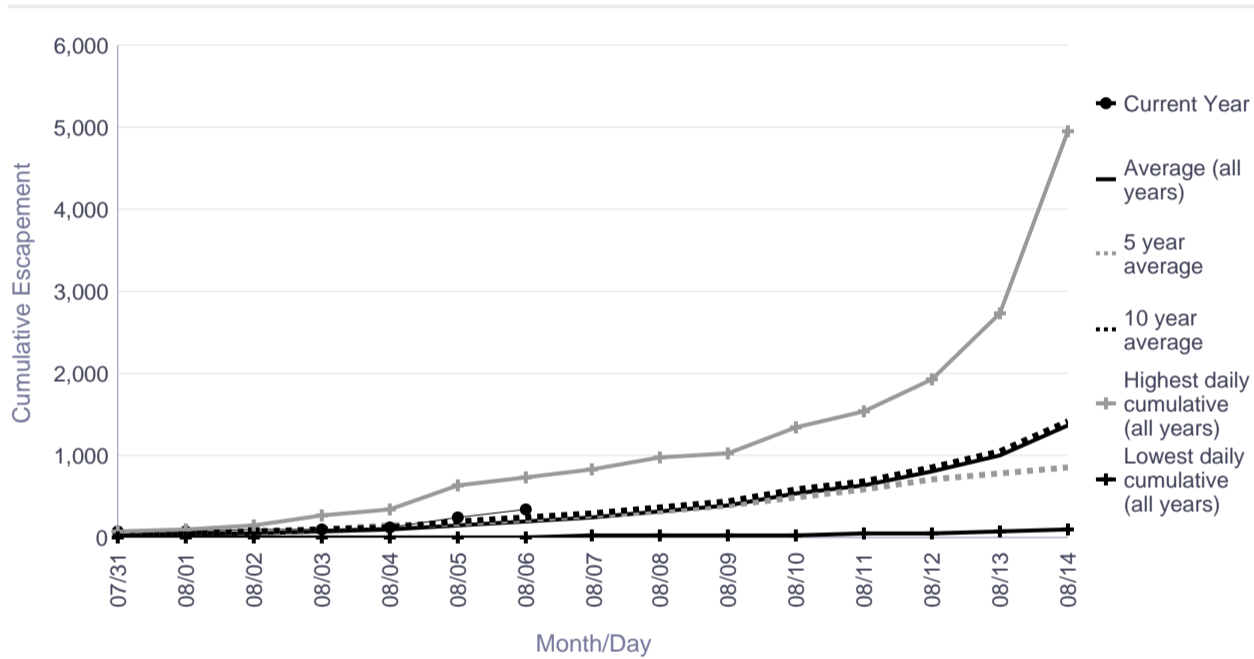
Informational Packet

George River Salmon Monitoring Project Cumulative Daily Passage of Coho Salmon

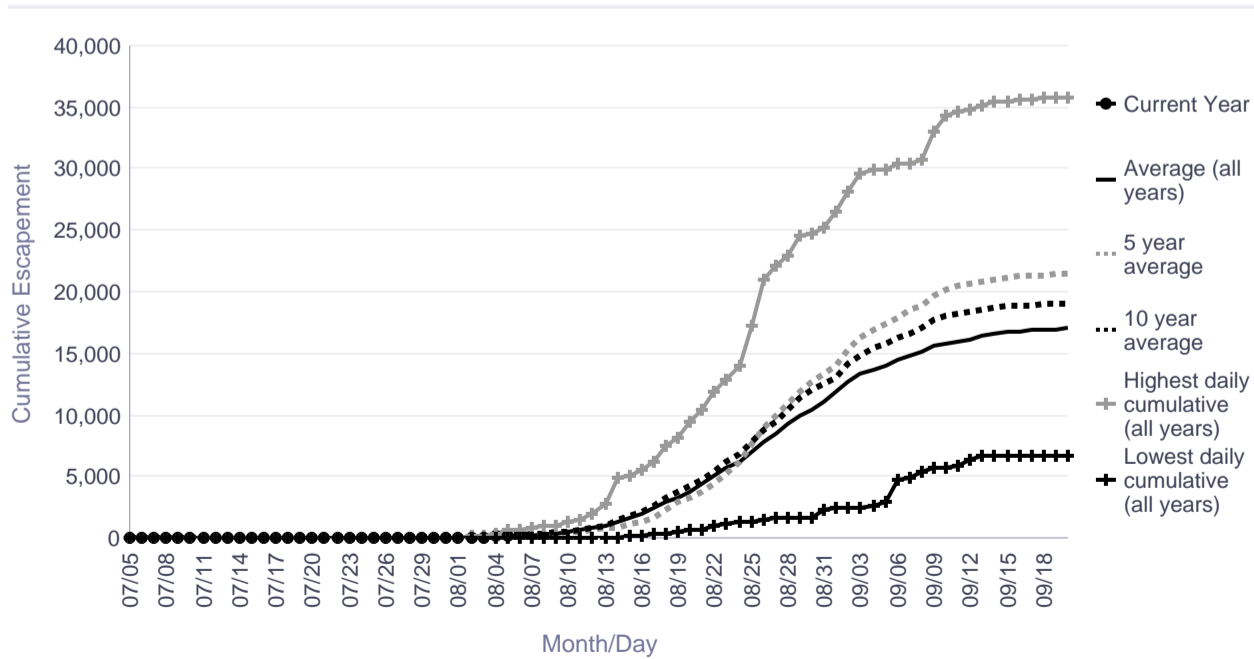
Date	Lowest daily cumulative (all years)	Average (all years)	5 year average	10 year average	Highest daily cumulative (all years)	Current Year
07/31	1	32	32	37	80	67
08/01	1	42	43	51	99	83
08/02	2	57	63	71	152	100
08/03	2	78	103	100	261	105
08/04	3	106	140	135	347	137
08/05	15	155	168	197	647	245
08/06	15	195	217	240	723	352
08/07	18	244	273	288	833	
08/08	22	317	310	366	987	
08/09	28	402	391	439	1,016	
08/10	36	538	490	578	1,356	
08/11	49	636	577	696	1,542	
08/12	53	798	707	857	1,923	
08/13	76	1,013	782	1,063	2,726	
08/14	108	1,373	869	1,422	4,945	

	Lowest Count	Average Count	5 Year Average	10 Year Average	Highest Count
Season Total	6,759	17,033	21,463	19,113	35,771

Focused Two-Week Data View



Season Total Overview



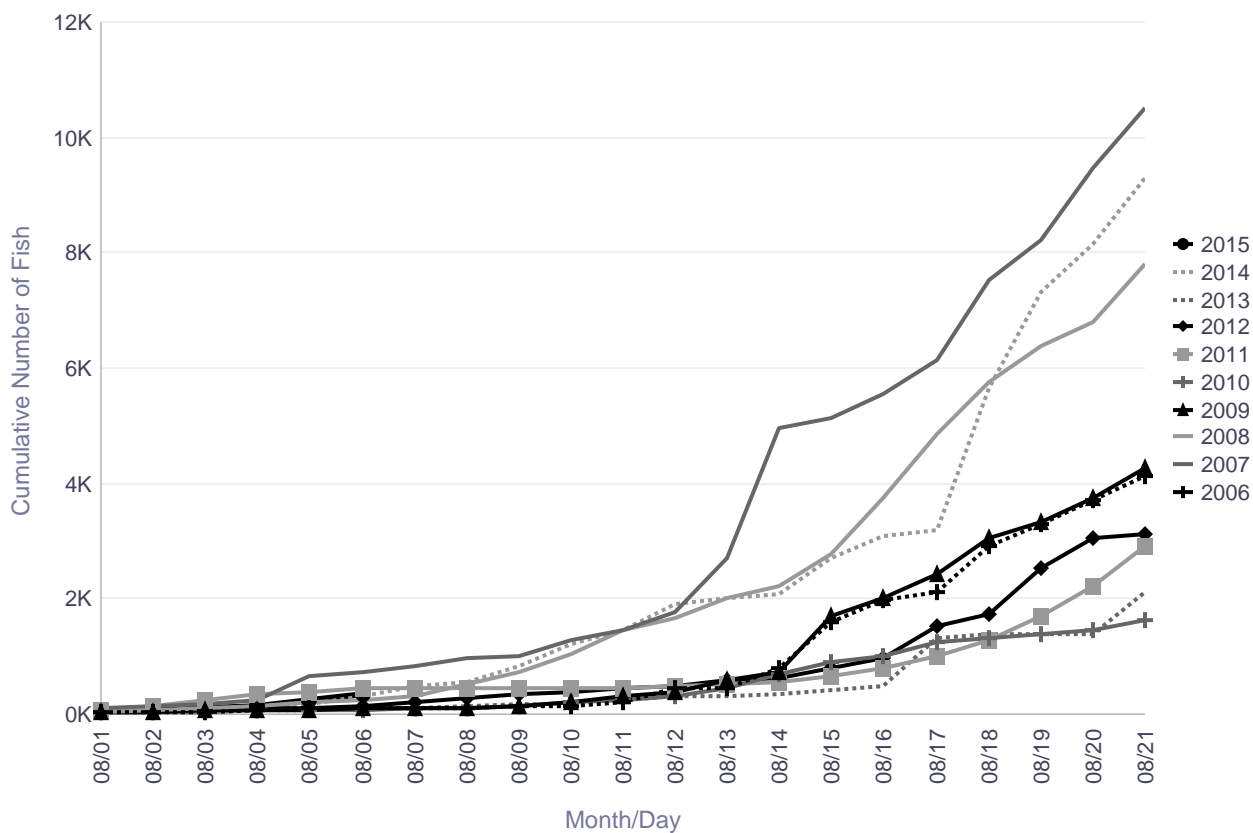
Informational Packet

George River Weir Historical Cumulative Daily Passage of Coho Salmon

	Cumulative Daily Passage									
Date	2006	2007	2008	2009	2010	2011	2012	2013	2014	2015
08/04	71	264	147	72	65	347	94	59	135	137
08/05	96	647	199	76	77	371	117	81	192	245
08/06	103	723	265	92	81	439	146	103	318	352
08/07	<u>117</u>	<u>833</u>	<u>307</u>	<u>103</u>	<u>99</u>	<u>448</u>	<u>213</u>	<u>124</u>	<u>482</u>	
08/08	125	987	530	118	108	449	279	142	574	
08/09	133	996	736	150	160	452	354	163	828	
08/10	158	1,304	1,052	230	196	457	398	182	1,217	
08/11	225	1,448	1,460	334	245	467	446	257	1,469	

	2006	2007	2008	2009	2010	2011	2012	2013	2014	2015
Season Total	12,705	28,398	21,931	12,490	12,639	29,120	14,478	15,308	35,771	

George River Coho



There are no comments for the past three days.

Informational Packet

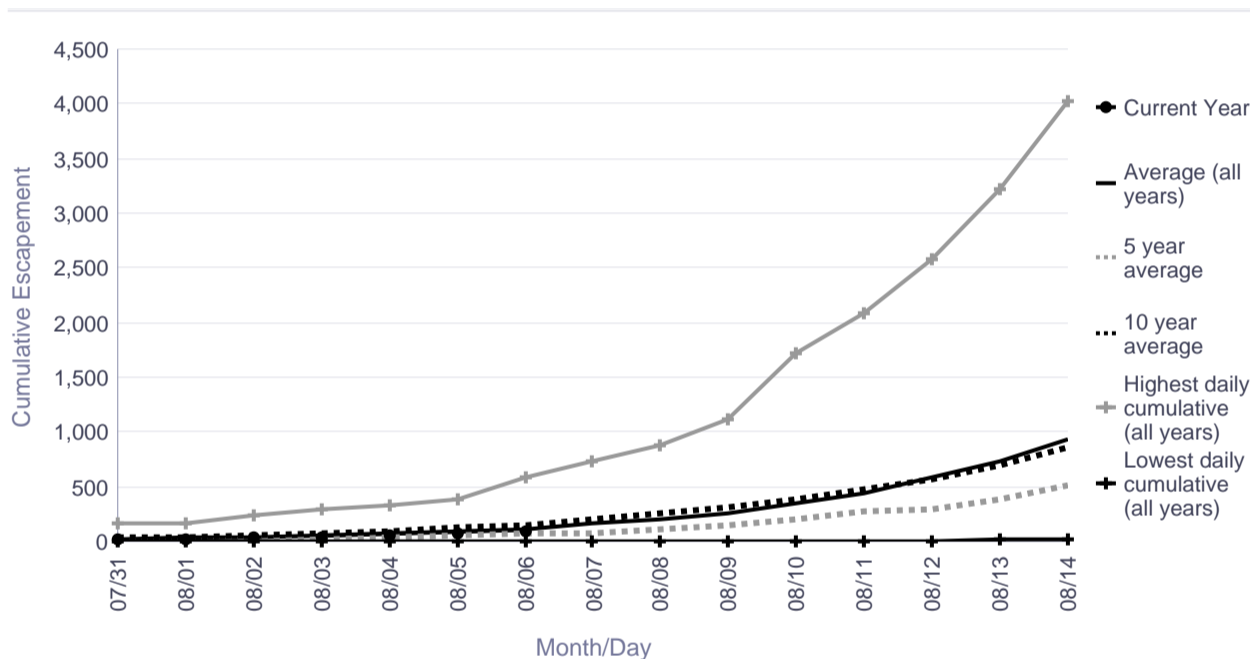
Kogrukluk River Salmon Monitoring Project Cumulative Daily Passage of Coho Salmon

Escapement Goal Range: 13,000-28,000

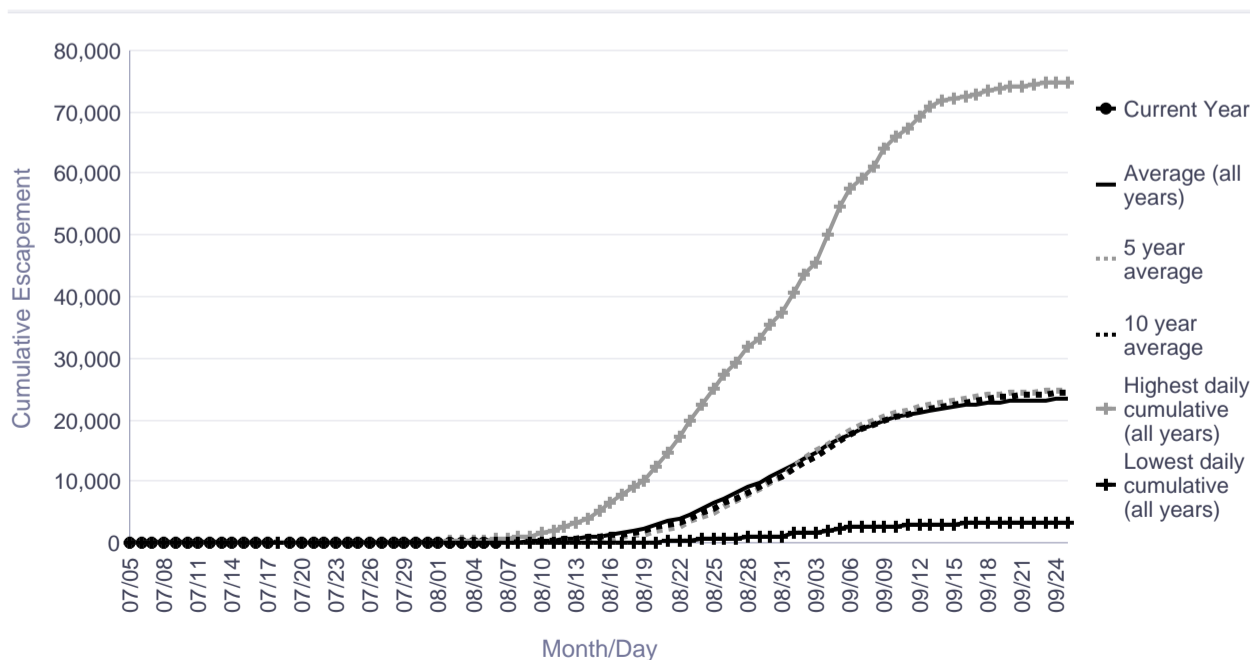
Date	Lowest daily cumulative (all years)	Average (all years)	5 year average	10 year average	Highest daily cumulative (all years)	Current Year
07/31	0	29	6	32	169	15
08/01	0	37	9	39	171	24
08/02	0	47	14	52	237	32
08/03	0	63	27	75	289	38
08/04	0	77	42	100	330	62
08/05	0	97	49	134	386	83
08/06	0	122	68	157	581	101
08/07	0	160	85	197	732	
08/08	0	203	108	251	872	
08/09	0	266	151	316	1,117	
08/10	0	356	209	391	1,723	
08/11	0	433	273	478	2,086	
08/12	1	582	298	576	2,574	
08/13	16	732	388	699	3,211	
08/14	28	938	522	868	4,018	

	Lowest Count	Average Count	5 Year Average	10 Year Average	Highest Count
Season Total	3,446	23,350	24,818	24,372	74,915

Focused Two-Week Data View



Season Total Overview



Informational Packet

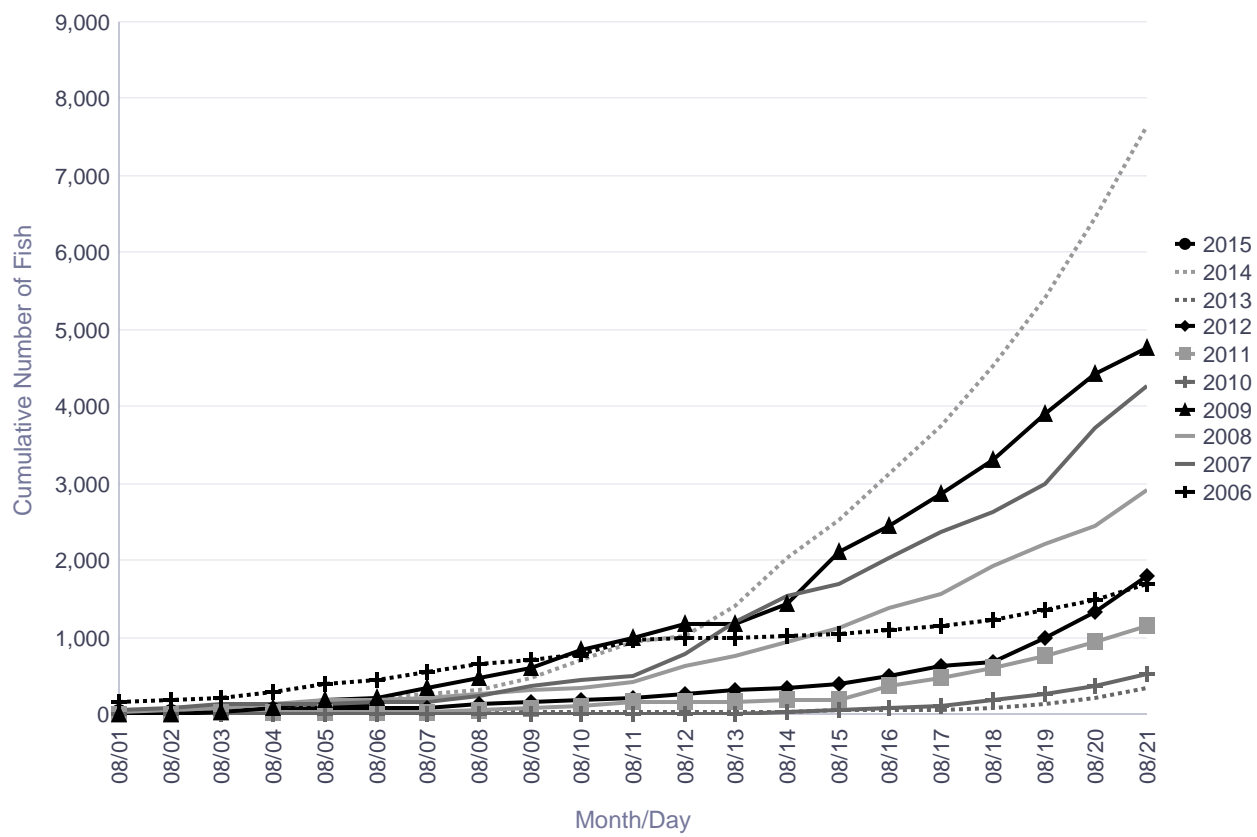
Kogrukluk River Weir Historical Cumulative Daily Passage of Coho Salmon

	Cumulative Daily Passage									
Date	2006	2007	2008	2009	2010	2011	2012	2013	2014	2015
08/04	283	131	122	70	1	24	45	31	108	62
08/05	386	137	191	174	1	24	57	39	125	83
08/06	453	147	191	203	1	24	71	40	204	101
08/07	559	163	218	330	1	40	92	40	251	
08/08	648	242	268	464	1	57	133	40	311	
08/09	713	360	322	614	2	90	157	40	466	
08/10	771	451	345	836	3	112	192	40	700	
08/11	977	502	428	981	5	155	217	40	948	

Escapement Goal Range: 13,000 to 28,000
Highlighted years below are when escapement goal was achieved or exceeded.

	2006	2007	2008	2009	2010	2011	2012	2013	2014	2015
Season Total	16,268	26,423	29,237	22,289	14,689	21,800	13,421	21,207	52,975	

Kogrukluk River Coho



There are no comments for the past three days.

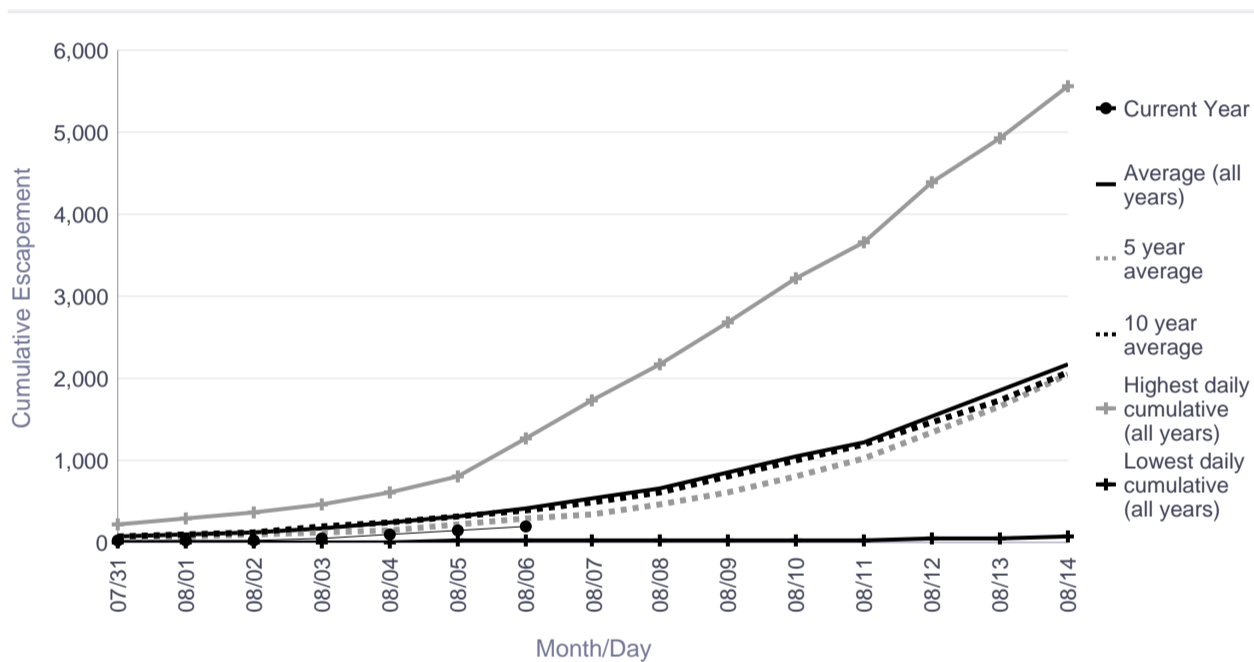
Informational Packet

Tatlawiksuk River Salmon Monitoring Project Cumulative Daily Passage of Coho Salmon

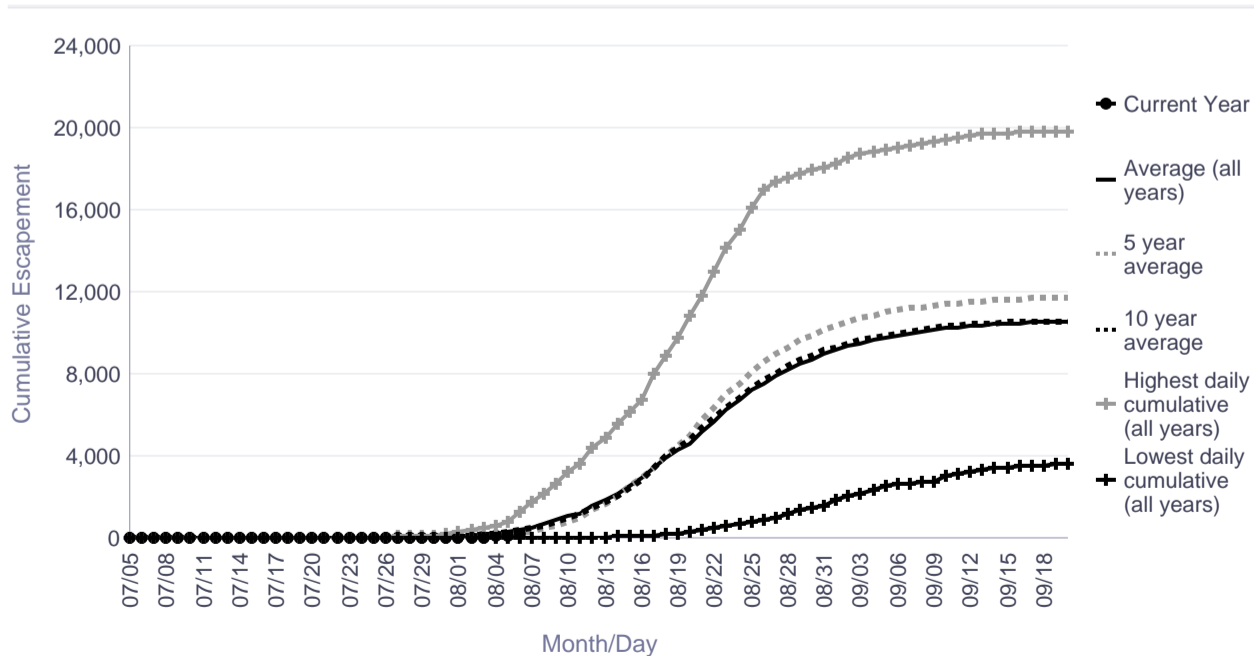
Date	Lowest daily cumulative (all years)	Average (all years)	5 year average	10 year average	Highest daily cumulative (all years)	Current Year
07/31	7	85	56	83	231	21
08/01	10	112	77	113	286	25
08/02	15	138	97	136	379	35
08/03	15	186	128	188	477	63
08/04	15	238	160	242	605	91
08/05	17	310	227	310	819	152
08/06	17	420	285	405	1,271	191
08/07	22	529	353	492	1,739	
08/08	23	668	468	624	2,176	
08/09	24	853	604	806	2,673	
08/10	28	1,052	813	1,004	3,209	
08/11	34	1,232	1,017	1,186	3,659	
08/12	42	1,538	1,344	1,465	4,381	
08/13	54	1,845	1,672	1,725	4,915	
08/14	70	2,180	2,046	2,072	5,561	

	Lowest Count	Average Count	5 Year Average	10 Year Average	Highest Count
Season Total	3,621	10,543	11,710	10,588	19,814

Focused Two-Week Data View



Season Total Overview



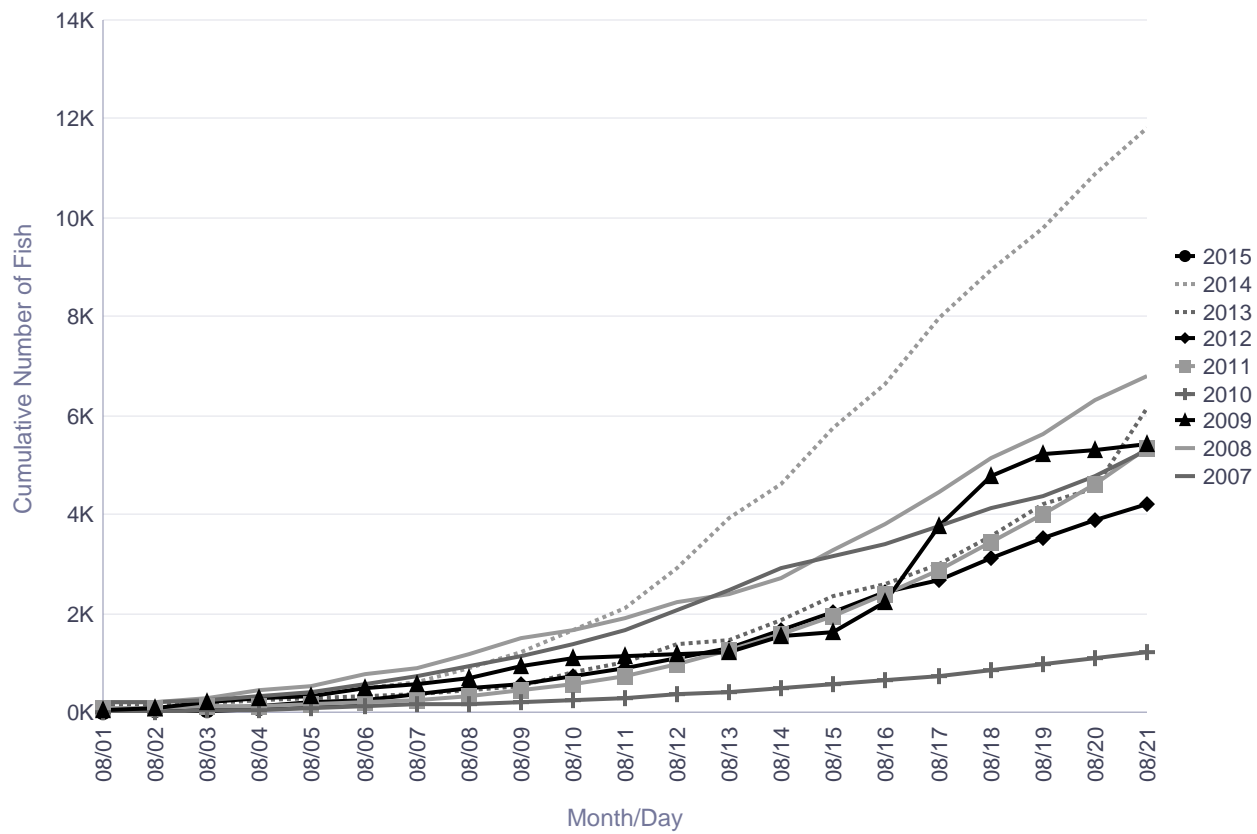
Informational Packet

Tatlawiksuk River Weir Historical Cumulative Daily Passage of Coho Salmon

Cumulative Daily Passage										
Date	2006	2007	2008	2009	2010	2011	2012	2013	2014	2015
08/04		322	452	285	42	136	141	236	247	91
08/05		423	534	346	83	162	202	308	380	152
08/06		562	774	474	132	200	267	317	509	191
08/07		<u>728</u>	<u>894</u>	<u>589</u>	<u>152</u>	<u>255</u>	<u>369</u>	<u>367</u>	<u>624</u>	
08/08		922	1,168	679	183	332	495	444	886	
08/09		1,145	1,483	929	226	437	589	536	1,231	
08/10		1,396	1,682	1,092	263	576	739	805	1,684	
08/11		1,674	1,889	1,128	304	754	904	1,027	2,097	

	2006	2007	2008	2009	2010	2011	2012	2013	2014	2015
Season Total		8,500	11,022	10,148	3,773	14,184	8,015	12,764	19,814	

Tatlawiksuk River Coho



There are no comments for the past three days.

Bethel Test Fishery - Coho

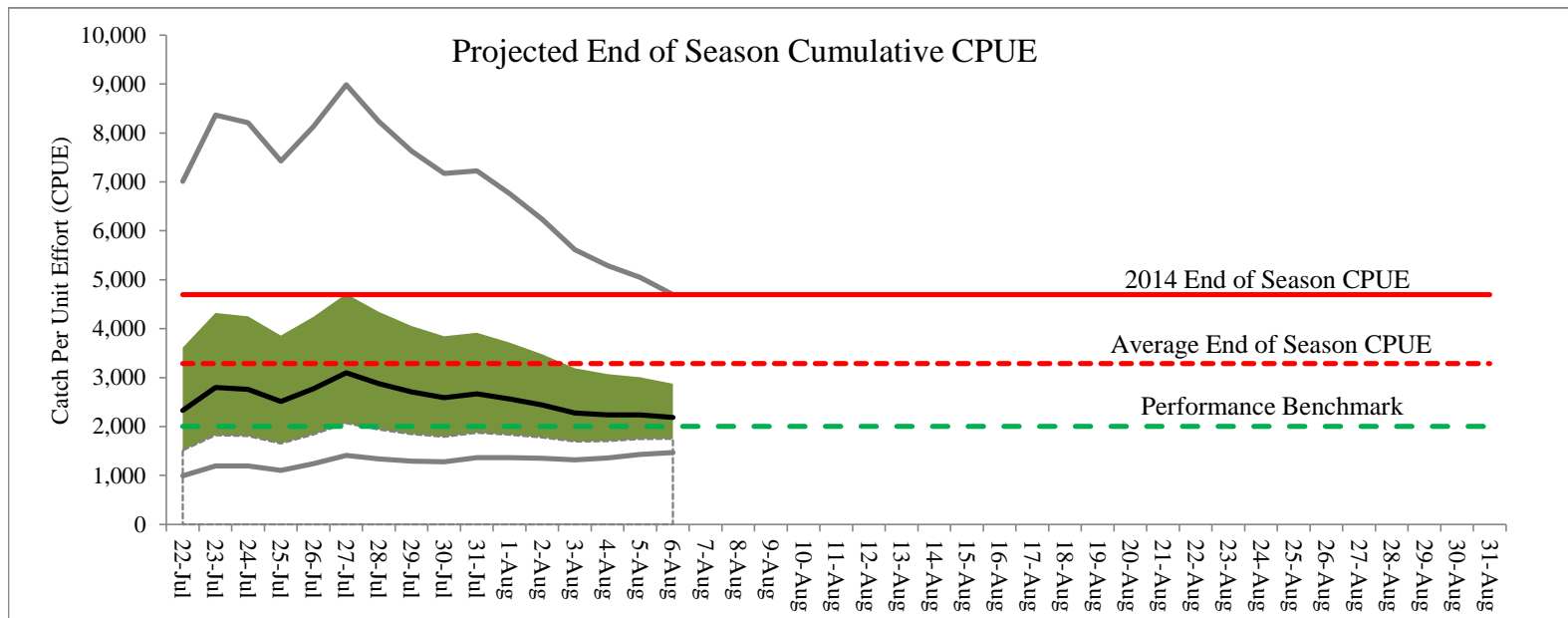
8/6/2015

Best Estimate of Run Timing:	Late
Average percent of run past Bethel on this date:	42%
5-Day Forecast (Anticipated Percent of Run):	25% - 27%
Daily CPUE:	100
Daily Cumulative CPUE:	972
Percentile Rank (1984-2014):	42%

End of Season Projections as of:	8/6/2015
Run Timing Scenerio	Cum. CPUE
Earliest 10%	1,469
First Quartile	1,749
Median	2,188
Third Quartile	2,875
Latest 10%	4,695

Percent of all Salmon Passing Bethel as of:	8/6/2015
2015	81%
Historical Average	93%

Note: Percentages based on 3-day average.



The "Performance Benchmark" refers to an end of season CPUE of 2,000. Historically, when BTF exceeded 2,000 escapement goals at Kogruluk and Kwethluk were achieved, subsistence harvest was within ANS, and modest commercial fishing opportunity was provided.

Informational Packet

Preliminary Data

2015 Location of Coho Salmon by Date Past Bethel Continuing Up the Kuskokwim River

Community	River Miles	Travel Time (mi/day)	Days Between Community	Days From Bethel	Hist. Run Timing			2015 Reference Points			
					25%	50%	75%	First Fish	First 50+	90 CPUE	First 100+
					8/2	8/8	8/14	7/11	7/27	7/31	8/5
Apokak Slough S1 L	0	13	0	-5.1	27-Jul	2-Aug	8-Aug	5-Jul	21-Jul	25-Jul	30-Jul
Tuntutuliak	28	13	2.2	-2.9	30-Jul	5-Aug	11-Aug	8-Jul	24-Jul	28-Jul	2-Aug
Johnson R S2 L	48	13	1.5	-1.4	31-Jul	6-Aug	12-Aug	9-Jul	25-Jul	29-Jul	3-Aug
Napaskiak	60	13	0.9	-0.5	1-Aug	7-Aug	13-Aug	10-Jul	26-Jul	30-Jul	4-Aug
Bethel	66	13	0.5	0.0	2-Aug	8-Aug	14-Aug	11-Jul	27-Jul	31-Jul	5-Aug
Kwethluk	82	13	1.2	1.2	3-Aug	9-Aug	15-Aug	12-Jul	28-Jul	1-Aug	6-Aug
Akiak	100	13	1.4	2.6	4-Aug	10-Aug	16-Aug	13-Jul	29-Jul	2-Aug	7-Aug
Tuluksak S3 L	120	13	1.5	4.2	6-Aug	12-Aug	18-Aug	15-Jul	31-Jul	4-Aug	9-Aug
Kalskag	163	13	3.3	7.5	9-Aug	15-Aug	21-Aug	18-Jul	3-Aug	7-Aug	12-Aug
Birch Tree	183	13	1.5	9.0	11-Aug	17-Aug	23-Aug	20-Jul	5-Aug	9-Aug	14-Aug
Aniak	191	13	0.6	9.6	11-Aug	17-Aug	23-Aug	20-Jul	5-Aug	9-Aug	14-Aug
Chuathbaluk S4 L	201	13	0.8	10.4	12-Aug	18-Aug	24-Aug	21-Jul	6-Aug	10-Aug	15-Aug
Napaimiut	223	13	1.7	12.1	14-Aug	20-Aug	26-Aug	23-Jul	8-Aug	12-Aug	17-Aug
Crooked Creek	259	13	2.8	14.8	16-Aug	22-Aug	28-Aug	25-Jul	10-Aug	14-Aug	19-Aug
Holitna River S5 L	305	13	3.5	18.4	20-Aug	26-Aug	1-Sep	29-Jul	14-Aug	18-Aug	23-Aug
Tatlawiksuk River	350	13	3.5	21.8	23-Aug	29-Aug	4-Sep	1-Aug	17-Aug	21-Aug	26-Aug
McGrath	468	13	9.1	30.9	1-Sep	7-Sep	13-Sep	10-Aug	26-Aug	30-Aug	4-Sep
Nikolai	585	13	9.0	39.9	10-Sep	16-Sep	22-Sep	19-Aug	4-Sep	8-Sep	13-Sep

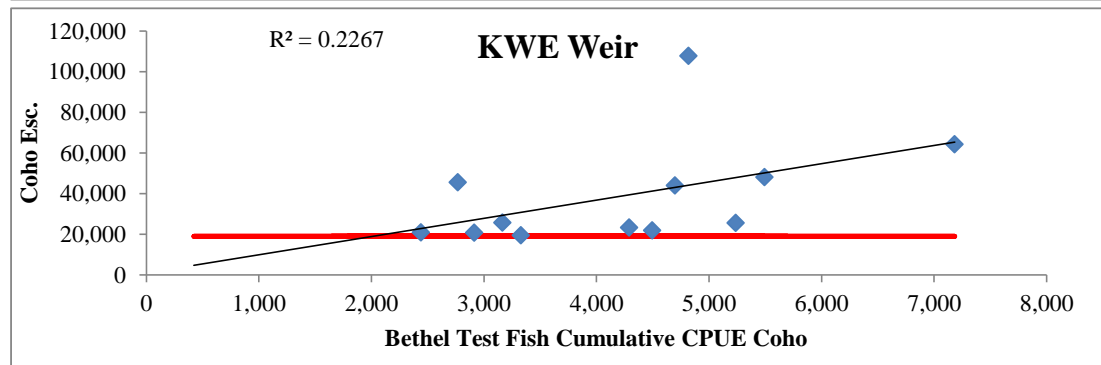
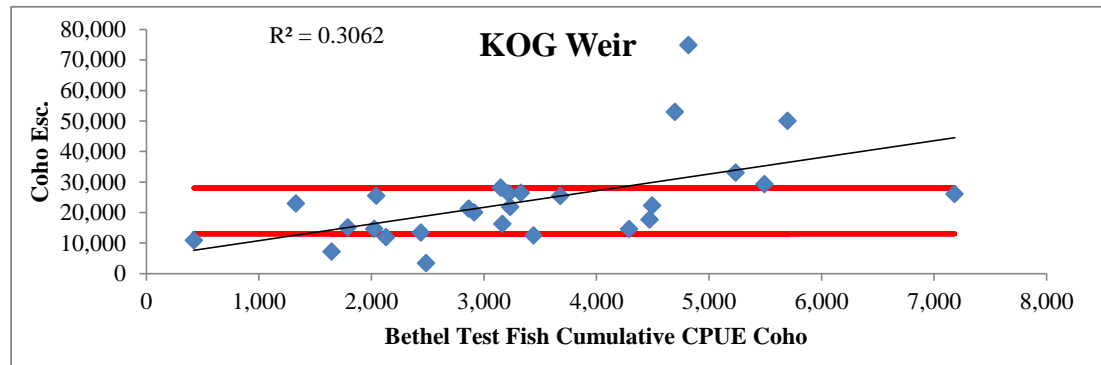
Travel speed based on historical tag recaptures at weirs - likely a conservative estimate of travel time.

Informational Packet

Preliminary Data

Historical Coho Salmon Abundance

	BTF	Total Run	Total Esc.	Kogrukluk	Kwethluk
1984	3,219			26,206	
1985	1,790			15,076	
1986	4,471			17,660	
1987	2,043			25,461	
1988	3,441			12,463	
1989	2,624				3,446
1990	2,485				7,206
1991	1,645				
1992	2,766				45,605
1993	2,765				
1994	3,150			28,110	
1995	1,998				
1996	5,699			50,003	
1997	2,130			11,883	
1998	1,328			22,987	
1999	422			10,908	
2000	5,236	875,447	567,210	33,063	25,610
2001	2,914	742,976	515,962	19,983	20,725
2002	4,289	631,145	500,566	14,515	23,298
2003	4,819	2,699,102	2,375,943	74,915	107,789
2004	7,183	1,679,812	1,191,700	26,078	64,216
2005	3,678	819,739	639,004	25,407	
2006	3,164	694,283	464,617	16,268	25,667
2007	3,328	777,552	597,110	26,423	19,473
2008	5,494	1,130,279	931,753	29,237	48,049
2009	4,495	723,807	583,283	22,289	21,911
2010	2,024	499,951	407,065	14,689	
2011	3,234	1,170,785	1,064,277	21,800	
2012	2,440	559,219	443,296	13,421	20,895
2013	2,865			21,207	
2014	4,697			52,975	43,945
AVG.	3,285	1,000,315	790,907	23,840	38,932



Generally when BTF CPUE exceeds 2,000 the escapement goals (RED Lines) at Kogrukluk River (13,000-28,000) and Kwethluk River (>19,000) are achieved.

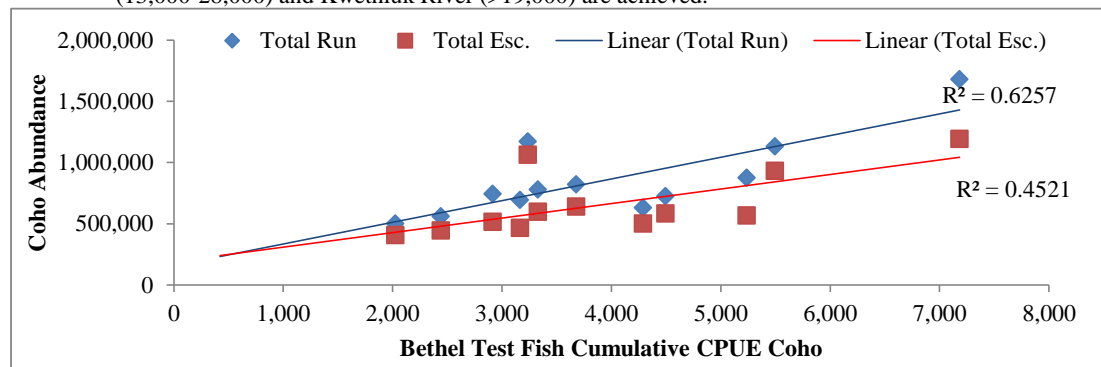


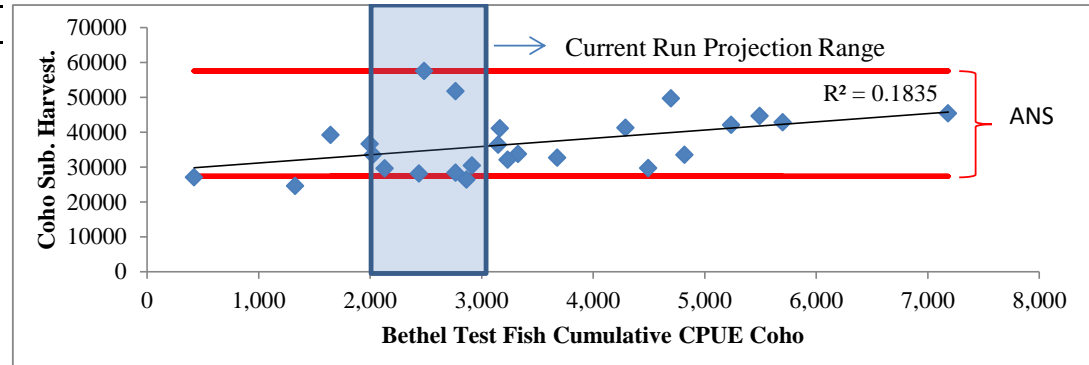
Figure above does not include data from 2003.

Informational Packet

Preliminary Data

Historical Abundance and Subsistence Harvest

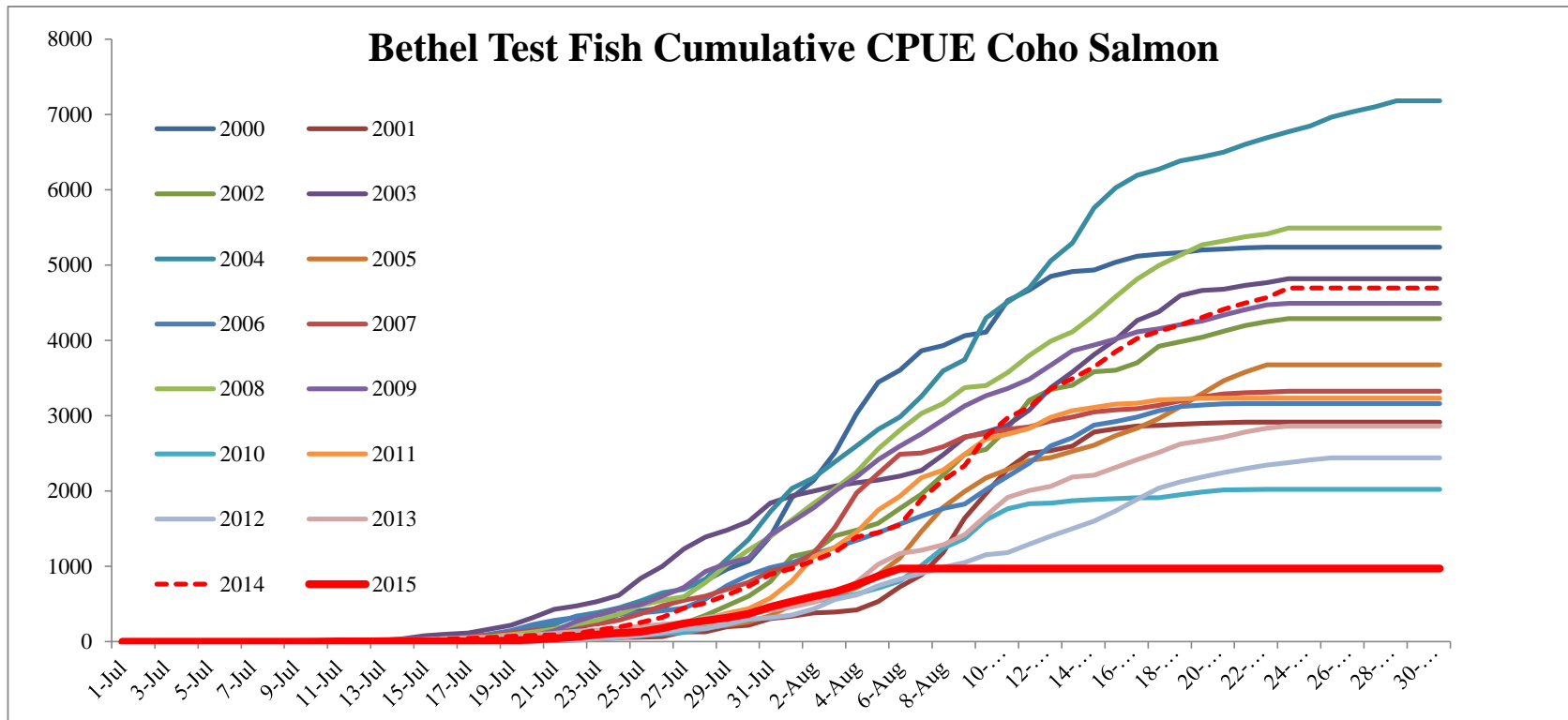
	BTF	Total Run	Total Esc.	Sub. Harvest
1984	3,219			57,560
1985	1,790			39,252
1986	4,471			51,836
1987	2,043			28,458
1988	3,441			36,465
1989	2,624			36,648
1990	2,485			42,854
1991	1,645			29,649
1992	2,766			24,611
1993	2,765			27,102
1994	3,150			42,096
1995	1,998			30,465
1996	5,699			41,277
1997	2,130			33,531
1998	1,328			45,450
1999	422			32,755
2000	5,236	875,447	567,210	41,175
2001	2,914	742,976	515,962	33,766
2002	4,289	631,145	500,566	44,724
2003	4,819			29,767
2004	7,183	1,679,812	1,191,700	33,580
2005	3,678	819,739	639,004	32,172
2006	3,164	694,283	464,617	28,200
2007	3,328	777,552	597,110	26,409
2008	5,494	1,130,279	931,753	49,736
2009	4,495	723,807	583,283	
2010	2,024	499,951	407,065	
2011	3,234	1,170,785	1,064,277	
2012	2,440	559,219	443,296	
2013	2,865			
2014	4,697			
AVG.	3,285	858,750	658,820	36,782



Amounts Reasonably Necessary for Subsistence (coho salmon) = 27,4000 - 57,600
 Average subsistence harvest is approximately 36,000 coho salmon
 Anticipate twice the coho salmon harvest due to inability to harvest other salmon
 Highest Sub. harvest has been observed within the range of predicted run strength

Informational Packet

Preliminary Data



Coho salmon commercial harvest by day, 2004–2015

Informational Packet

	2004	2005	2006	2007	2008	2009	2010	2011	2012	2013	2014	2015	5-yr Average	10-yr Average
22-Jul					94			1,525					1,525	810
23-Jul										2,960			2,960	2,960
24-Jul									1,562				1,562	1,562
25-Jul					90									90
26-Jul							3,603			5,785			4,694	4,694
27-Jul								5,688	2,912				4,300	4,300
28-Jul						14,516								14,516
29-Jul														
30-Jul	9,462				119		6,049			8,968			7,509	5,045
31-Jul									3,485				3,485	3,485
1-Aug			10,309	19,133		16,846								15,429
2-Aug		8,666				150								4,408
3-Aug	23,957							12,563	6,958				9,761	9,761
4-Aug			10,650			19,337								14,994
5-Aug		21,463												21,463
6-Aug	28,638			15,926	12,013	380	17,246			23,461			20,354	13,805
7-Aug									5,148				5,148	5,148
8-Aug			14,162		13,552	16,224								14,646
9-Aug		20,026												20,026
10-Aug	20,022			13,059				8,660	5,209	30,972			14,947	14,475
11-Aug			23,209			15,569					23,999		23,999	20,926
12-Aug							7,274						7,274	7,274
13-Aug	20,353				19,667	3,709				8,077			8,077	10,484
14-Aug				15,411							32,570		32,570	23,991
15-Aug		7,768	18,253		20,140									15,387
16-Aug									7,996				7,996	7,996
17-Aug	8,491			6,231				4,557		12,778			8,668	7,855
18-Aug			7,833			10,189					26,395		26,395	14,806
19-Aug														
20-Aug	9,287				7,017					11,630			11,630	9,324
21-Aug									2,838		18,809		10,824	10,824
22-Aug			6,004	3,993	6,280	6,419								5,674
23-Aug	19,068									5,447			5,447	5,447
24-Aug	18,642			3,085										3,085
25-Aug		6,549	5,427		5,242									5,739
26-Aug											10,400		10,400	10,400
27-Aug	13,535													
28-Aug			2,593											2,593
29-Aug														
30-Aug	11,563		1,334											1,334
31-Aug														
Total	183,018	64,472	99,774	76,838	84,364	103,189	34,172	32,993	36,108	110,078	112,173		65,105	75,416
22-Jul to 1-Aug	9,462	0	10,309	19,133	303	31,362	9,652	7,213	7,959	17,713	0	0	8,507	10,364
2-Aug to 8-Aug	52,595	30,129	24,812	15,926	25,715	35,941	17,246	12,563	12,106	23,461	0		13,075	19,790
9-Aug to 14-Aug	40,375	20,026	23,209	28,470	19,667	19,278	7,274	8,660	5,209	39,049	56,569		23,352	22,741
15-Aug to 31-Aug	80,586	14,317	41,444	13,309	38,679	16,608	0	4,557	10,834	29,855	55,604		20,170	22,521