

Fishing the Anchorage Bowl

Includes stocked lakes on Joint Base Elmendorf-Richardson



- Stocked Lakes
- Angling Information
- Species Present
- Bathymetric Maps
- Species Identification

wefishak

www.wefishak.alaska.gov

Stocked Lakes Contents

Fish Identification6-11

Birchwood/Eagle River

Beach Lake13

Edmonds Lake14

Lower Fire Lake.....15

Symphony Lake16

Mirror Lake17

Anchorage

APU/University Lake....18

Campbell Point Lake....19

Cheney Lake20

DeLong.....21

Jewel Lake.....22

Lake Otis23

Sand Lake.....24

Taku-Campbell Lake ...25

Turnagain Arm

Airstrip/Willow Pond ..26

Alder Pond27

Tangle Pond.....28

JBER Lakes

Clunie Lake.....29

Fish Lake30

Green Lake.....31

Gwen Lake.....32

Hillberg Lake.....33

Sixmile Lake (Upper) ...34

Spring Lake.....35

Thompson Lake36

Triangle Lake.....37

Waldon Lake.....38

Anchorage Sport Fish
Information:
907-267-2218

For opening dates, daily limits, regulations
and tackle restrictions, please consult the
Southcentral Alaska regulation booklet.

SHIP CREEK FISHERIES CENTER

at the William Jack Hernandez Sport Fish Hatchery

Alaskans and visitors alike are drawn to the state for sport fishing opportunities. With high fishing pressure, enhancement is necessary in the Anchorage Bowl to provide diverse fisheries for all to enjoy. Located within the William Jack Hernandez Sport Fish Hatchery, the Ship Creek Fisheries Center creates a space where people can learn about sport fish enhancement in Alaska and opportunities provided by stocking.



With over 100 rearing tanks, the hatchery can produce up to 6 million fish each year. These fingerling (1" to 2"), smolt (3" to 5") and catchable (7"–12") fish are released throughout Southcentral Alaska from Cordova to Kodiak, Homer, Kenai, Seward, Anchorage, Mat/Su and Talkeetna. Sport fishing activity supported through these fish releases accounts for over \$20 million a year in economic impact on local communities.

Visit the Ship Creek Fisheries Center

941 N. Reeve Blvd., Anchorage AK

Contact the Ship Creek Fisheries Center at: 907-269-0427

Find us on Facebook! ADF&G-Ship Creek Fisheries Center

Join us for a free guided tour June-August!
Tuesdays, Thursdays, and Saturdays at 11AM and 2PM

The hatchery is open 7 days
per week, 8 a.m. to 4 p.m.



These opportunities funded in part by Federal Aid in Sport Fish and Wildlife Restoration.

The Alaska Department of Fish and Game administers all programs and activities free from discrimination based on race, color, national origin, age, sex, religion, marital status, pregnancy, parenthood, or disability. The department administers all programs and activities in compliance with Title VI of the Civil Rights Act of 1964, Section 504 of the Rehabilitation Act of 1973, Title II of the Americans with Disabilities Act of 1990, the Age Discrimination Act of 1975, and Title IX of the Education Amendments of 1972.

If you believe you have been discriminated against in any program, activity, or facility, or if you desire further information please write to ADF&G, P.O. Box 115526, Juneau, AK 99811-5526; U.S. Fish and Wildlife Service, 4040 N. Fairfax Drive, Suite 300 Webb, Arlington, VA 22203; or O.E.O., U.S. Department of the Interior, Washington DC 20240. For information on alternative formats for this and other department publications, please contact the department ADA Coordinator at (voice) 907-465-6077, (TDD) 907-465-3646, or (FAX) 907-465-6078.

Go Fishing



Grab Your Gear

A 4 or 5 weight fly rod, or a light duty rod and reel would be ideal gear for stocked lakes fishing.

If you need fishing gear, advice, or recommendations check with your local ADF&G office. Some offices loan fishing equipment.

Find Your Place

There are over 150 stocked lakes in Southcentral. Many lakes are a short drive from home.

For lake stocking information, visit:

www.wefishak.alaska.gov

Take Someone

Fish together. With friends, with family, with your neighbor. Fishing is an experience that should be shared.



Share Your Story

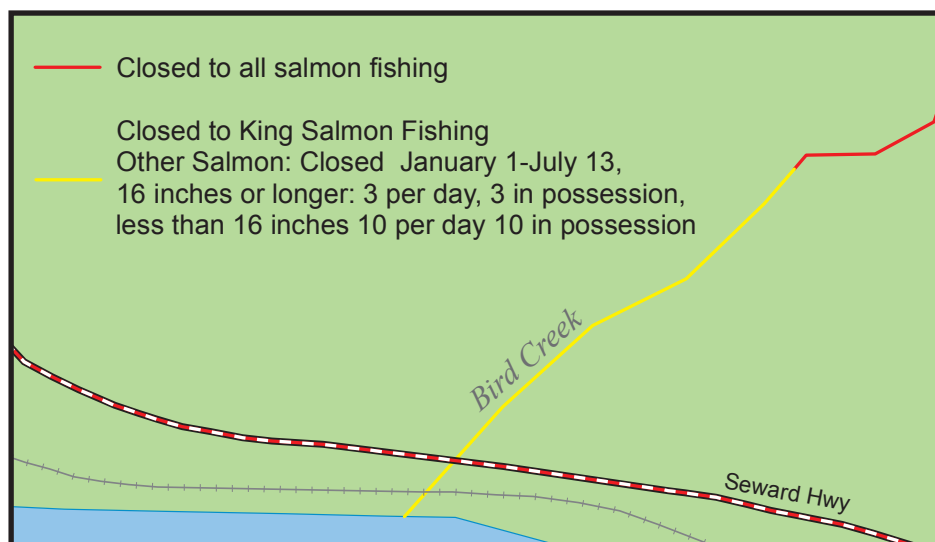
If you fish, you have a fishing story to tell. Share your story on social media using #wefishak.

#wefishak



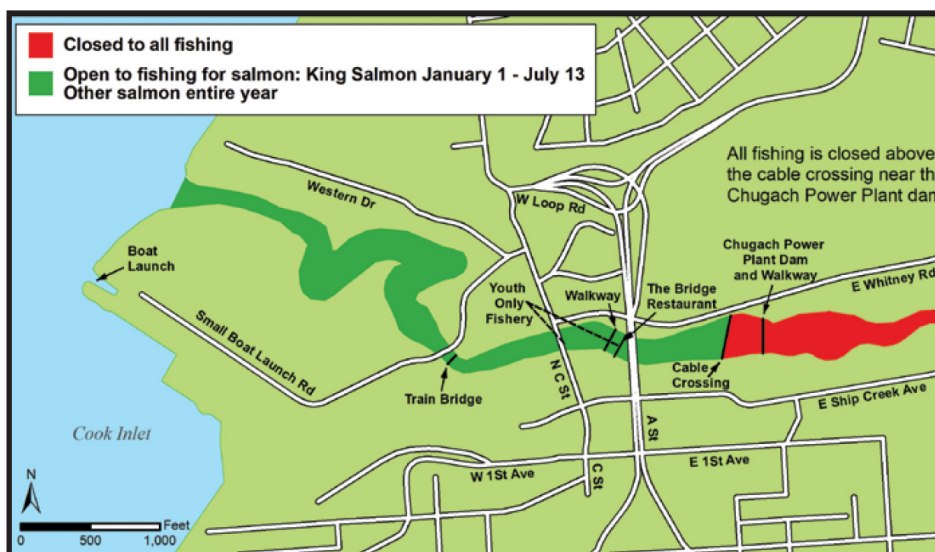
Bird Creek

Bird Creek is a short drive south of Anchorage on the Seward Highway. Anglers can target coho, chum and pink salmon. Bird Creek is always closed to fishing for king salmon.



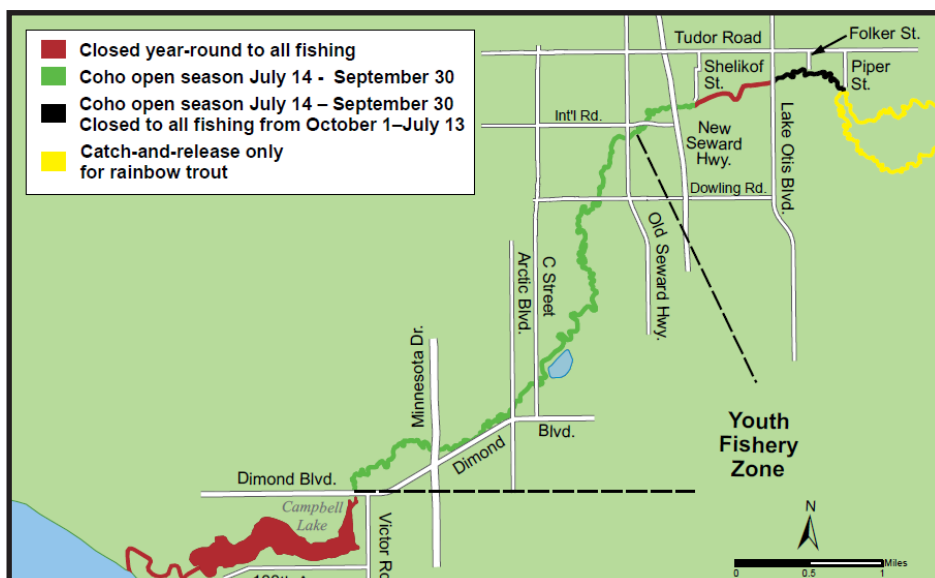
Ship Creek

Ship Creek is the most popular fishery in Anchorage during salmon runs. King salmon begin to enter Ship Creek in late May and peak around the middle to end of June. Fishing on the incoming and outgoing tides is best. Access is best around the C Street Bridge and along Whitney Road. Ship Creek is closed to fishing 100 feet below the Chugach Power Plant Dam up to the hatchery.



Campbell Creek

Campbell Creek is a great coho salmon fishery. The season for coho runs from July 14 through September 30. There are several locations along the Campbell Creek Greenbelt where anglers can cast to coho.



Pacific Salmon Marine Phase Identification

Please note, although marine phase implies that salmon are only this color in marine environments, they still display these characteristics upon arrival in freshwater. Then, they begin to undergo significant physical changes including changes in coloration. This chart is intended to help anglers identify salmon by species. However, it is the angler's responsibility to be able to positively identify the species at any point in its life cycle.

Chinook (king)

- Black mouth with black gum line
- Spots on both lobes of the tail
- Large spots on back



Coho (silver)

- White mouth with white gum line
- Spots only on upper lobe of the tail
- Spots on back



Pink (humpy)

- White mouth with black gum line
- Large oval spots on both lobes of the tail
- Large spots on back



Chum (dog/keta)

- White mouth with white gum line
- No spots on tail or back
- Vertical white bars coming up from belly
- White tip on anal fin



white tip here

Sockeye (red)

- White mouth with white gum line
- No spots on tail or back



Pacific Salmon Spawning Phase Identification

Salmon begin the transition to their spawning (reproducing then dying) phase when they enter freshwater streams. These photos represent those salmon ready to spawn, but during their transition they begin to express these characteristics and start to “blush” or color up.

Chinook (king)

- Maroon/dark red color
- Spots on body and both lobes of the tail
- Black mouth



Coho (silver)

- Maroon color with dark back
- Spots only on upper lobe of the tail
- Spots on back
- Males develop pronounced “kype” or hook jaw



Pink (humpy)

- Dull gray back and upper sides
- Cream/white lower sides
- Large, oval spots on back
- Large, oval spots on both lobes of the tail
- Males develop large humpback



Chum (dog/keta)

- Green color
- Vertical bars turn red/maroon
- No spots on tail or back
- White tip on anal fin
- Males exhibit large, canine-like teeth



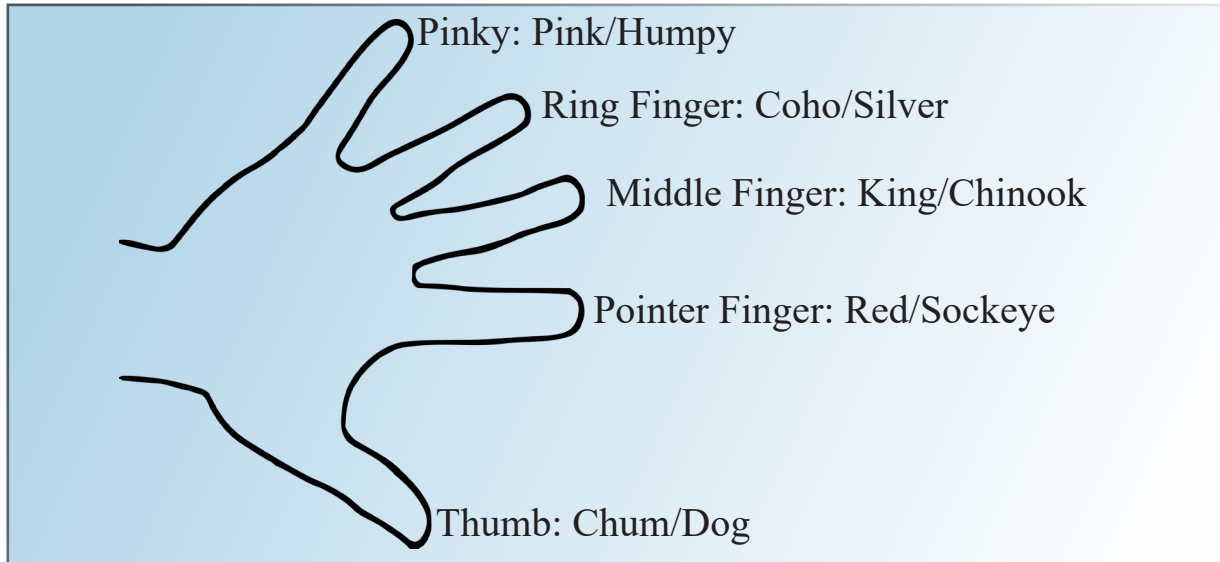
white tip here

Sockeye (red)

- Green head
- Red body color
- White mouth with white gumline
- No spots on tail or back
- Males develop large humpback



5 Finger Salmon Identification



If you put your thumb (chum) and pointer finger (sockeye) together, you get ZERO SPOTS

Does fish have a bright white tip on its anal fin?



No: Sockeye/red salmon



Yes: Chum/dog salmon

Your pinky (pink), ring finger (silver) and middle finger (king) all are fish WITH SPOTS

Does the fish have a very dark black mouth?



Yes: Chinook/king salmon

If not: does the fish have oval spots on the entire tail?



No: Coho/silver salmon



Yes: Pink/humpy salmon

Five Salmon

Family Challenge



About the “Five Salmon Family” certificate program

The Alaska Department of Fish and Game Five Salmon Family certificate program provides recognition to angling families who catch and document the five species of Pacific salmon commonly found in Alaska. Certification in the program requires all salmon must be:

- Legally caught in Alaskan waters (fresh or salt water) open to the public
- In compliance with current ADF&G sport fishing regulations

Fish caught out of season, in waters where sport fishing for that species is closed, or with illegal sport fishing means and methods cannot be counted toward the challenge – even if the fish is left in the water while the photo is being taken and is immediately released thereafter. The program promotes family or group angling participation, proper salmon identification and ethical angling practices. Participants can include members of an immediate family, extended family, “family” groups, or any other class of angling partners. The program is open to all anglers (resident and non-resident) who fish in Alaskan waters.

Documenting the catch

Photos documenting family members displaying the salmon are required for each fish. The photo(s) should allow easy identification of the salmon species, show responsible angling practices, and be taken at or near the fishing site. If you released the fish, please make sure your photo demonstrates responsible release practices, and young anglers are displaying proper safety considerations such as wearing float coats or life vests when near the water.

Submission process

Only one submission form and photo release is required per family or group. Forms and photos can be submitted in digital or hard-copy format. Forms are also available by contacting the Five Salmon Family certificate coordinator at: ryan.ragan@alaska.gov.

Photo Release

ADF&G wants to share the accomplishment of families who complete the challenge and may opt to use select images to promote the program or sport fishing in Alaska, such as in flyers, on our website, or on our official Facebook page. Whenever possible, ADF&G will credit the photographer and publish the names of individual(s) appearing in the photo(s). If you do not wish to have your family’s photos published, you may still participate in the challenge. To decline publication of your photos, do not include a signed photo release with your submission.

Processing and approval

Each submission will be reviewed by ADF&G staff. If the submission is complete and meets the certificate requirements, an official certificate with the family’s name will be mailed to the family household.

Please allow 2 to 3 weeks for processing of submission.

Mail to:

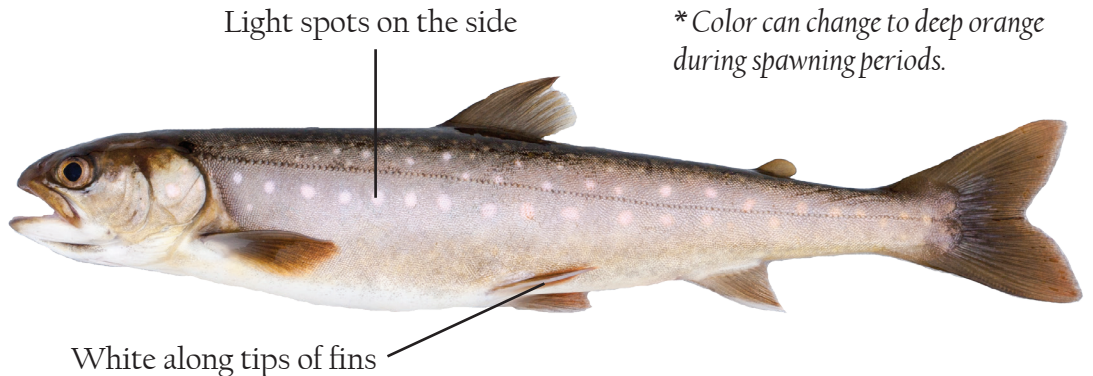
Alaska Dept. of Fish and Game
Attn: 5 Salmon Family
333 Raspberry Road
Anchorage, AK 99518

Anchorage Stocked Lakes

Species Identification

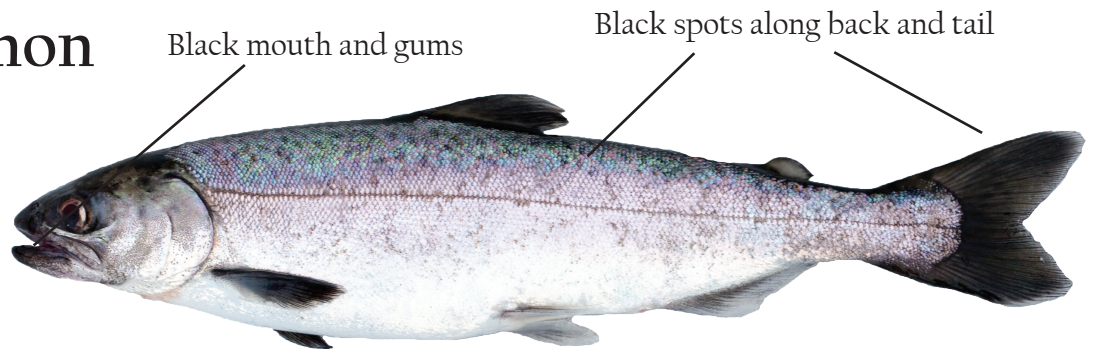
Arctic Char

- Large spots along both sides of the body.
- Bellies pink or orange depending on season
- Backs light to dark brown, depending on season
- Creamy light to orange spots, depending on season
- Orange to red pelvic fins with a bright white leading edge



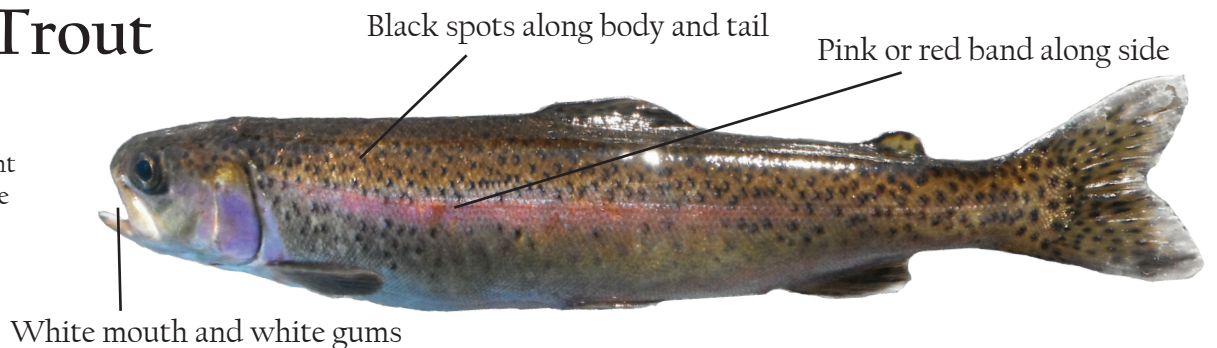
Chinook Salmon

- Black spots along back and on both lobes of the tail
- Silver to dark gray color
- Black mouth and gums



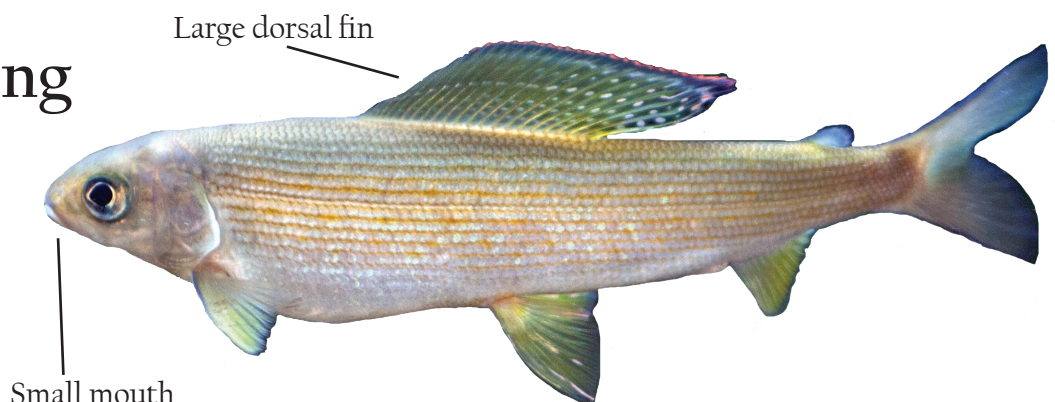
Rainbow Trout

- Black spots along the body and tail
- Light pink to prominent red colored band from the cheek to base of the tail
- White mouth



Arctic Grayling

- Large dorsal fin.
- Small mouth
- Silver or greyish body with gold or blue tones

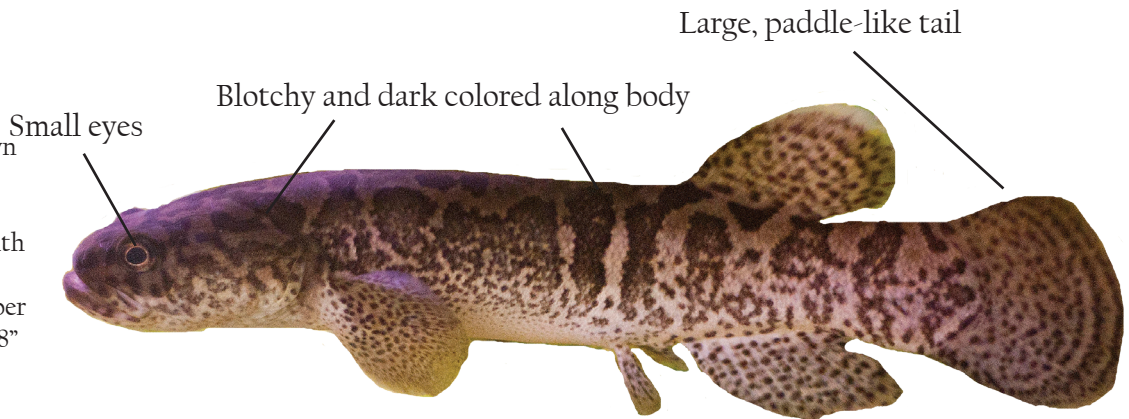


Non-Native and Invasive species

Blackfish are not native to Southcentral

Blackfish

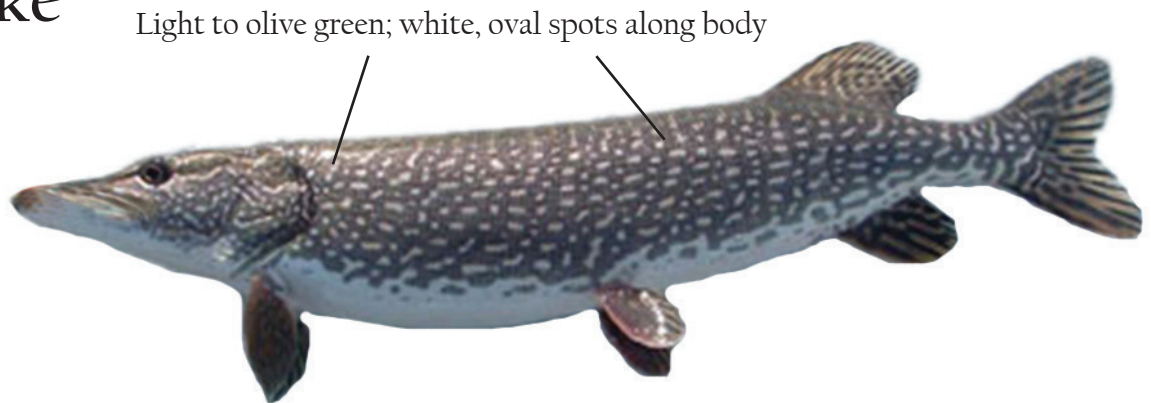
- Blotchy dark green to brown color
- Paddle-like tail
- Pale cream colored belly with blotchy areas on sides
- Lower jaw longer than upper
- Small, seldom longer than 8"



**Northern pike are an invasive species in Southcentral Alaska-
if you catch one, do not release it back to the water alive.**

Northern Pike

- Elongated body and head
- Flat snout similar to a duck's bill
- Light to olive green with white oval spots along body
- Sharp teeth on the jaws, roof of mouth, tongue, and gillrakers



The Anchorage Bowl

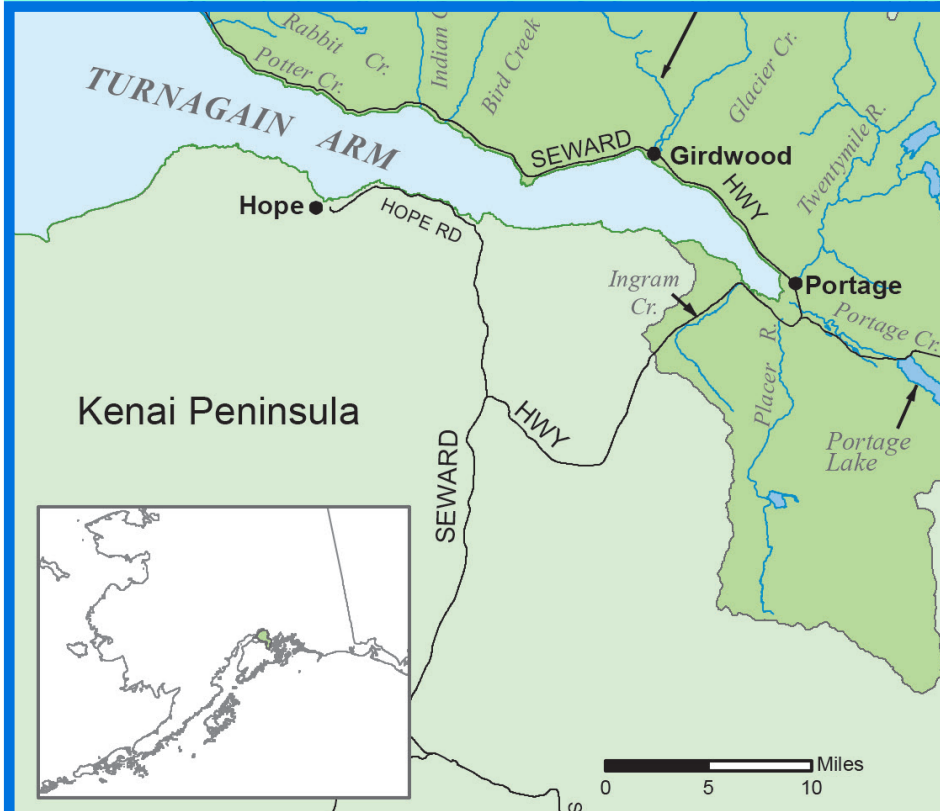
The Anchorage Bowl area includes all lakes and streams from Eklutna River (northern boundary) to Ingram Creek in Turnagain Arm (southern boundary).



**Birchwood/
Eagle River**



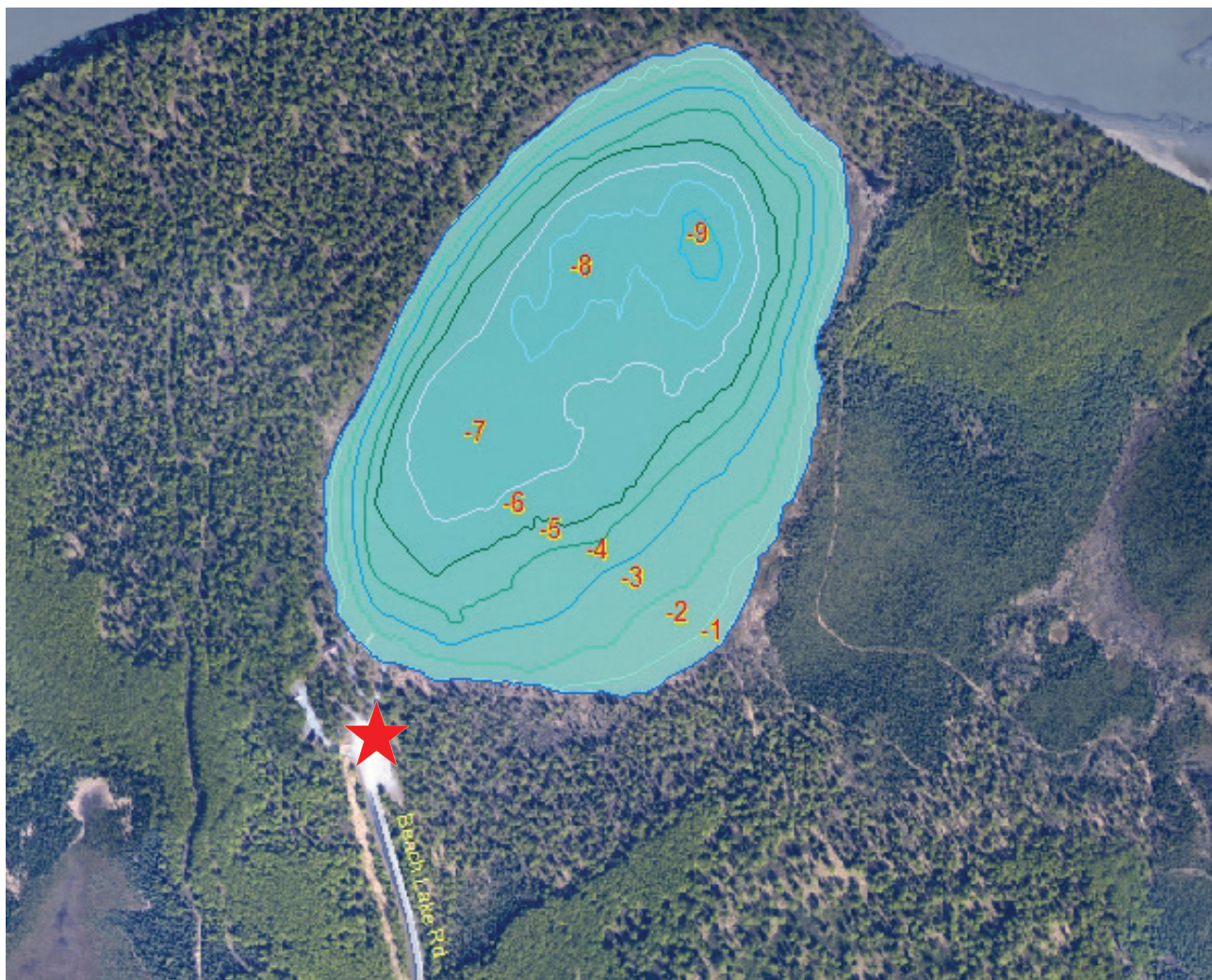
Anchorage



Turnagain Arm

Beach Lake

Beach Lake is located north of Anchorage in Chugiak. It is a great spot to take a canoe or float tube, especially in the long weed patch on the east side bank.



Access Information:

★ Public Access Point

From MP 20.9 on the Glenn Highway- Take South Birchwood exit and turn west past Chugiak High School. Drive roughly 0.9 miles to Beach Lake Road and turn left. Drive 2 miles to the lake.

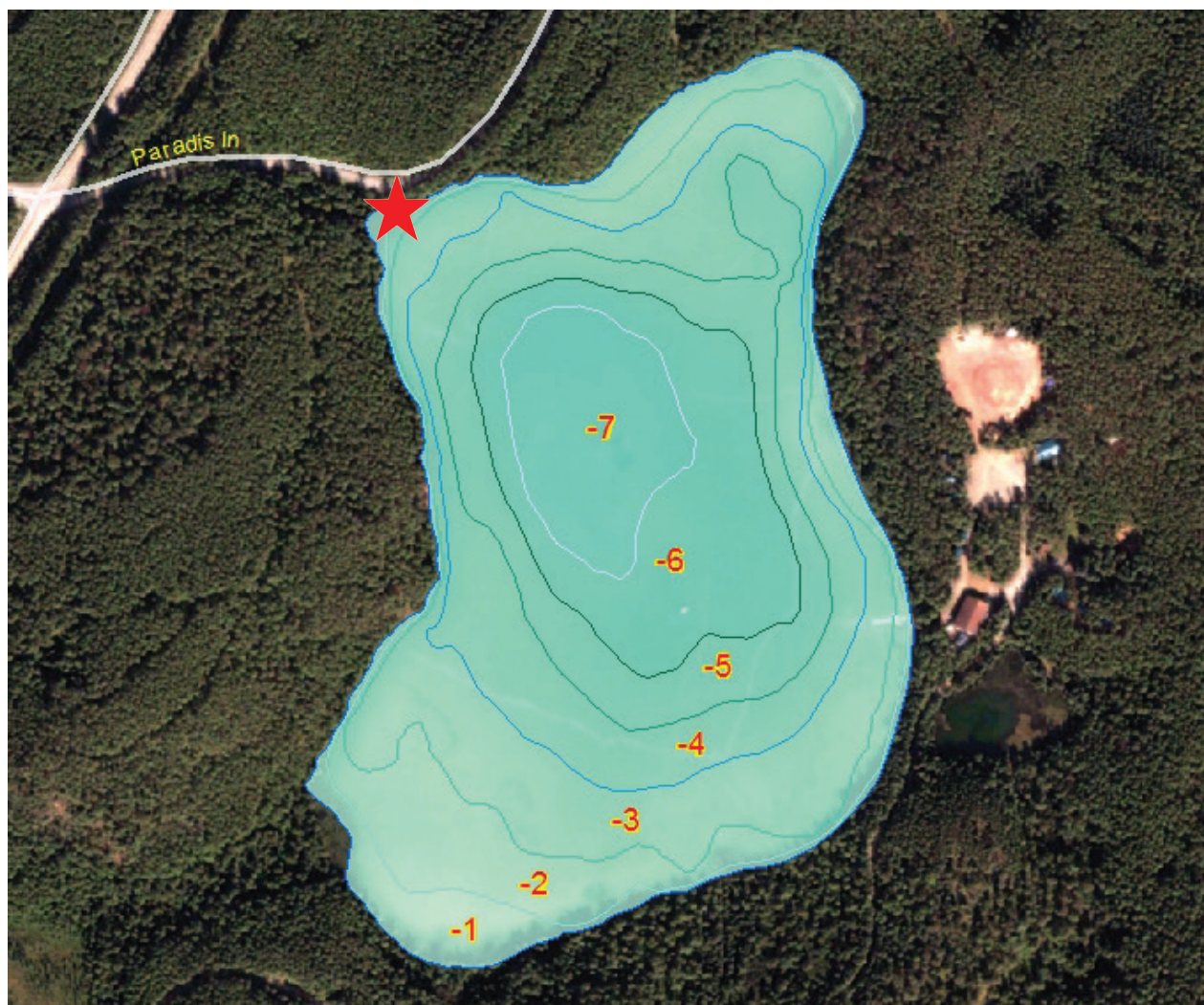
Species Stocked	# Stocking Events	Time of Year	Stocked As:
Arctic Grayling	2	Spring/Summer	Broodstock
Rainbow Trout	2	Spring/Summer	Catchables
Chinook Salmon	1	Fall/Winter	Catchables

Catchables: In the range of 7 to 12 inches; determined to be of adequate size for sport anglers to harvest for a meal.

Broodstock: Adults that have reached maturity and have spawned once before release. These fish provide eggs to produce future generations of hatchery fish.

Edmonds Lake

Edmonds Lake is located north of Anchorage in Chugiak.
Great spot to take a canoe or inflatable as there is limited shore access.



Access Information:

★ Public Access Point

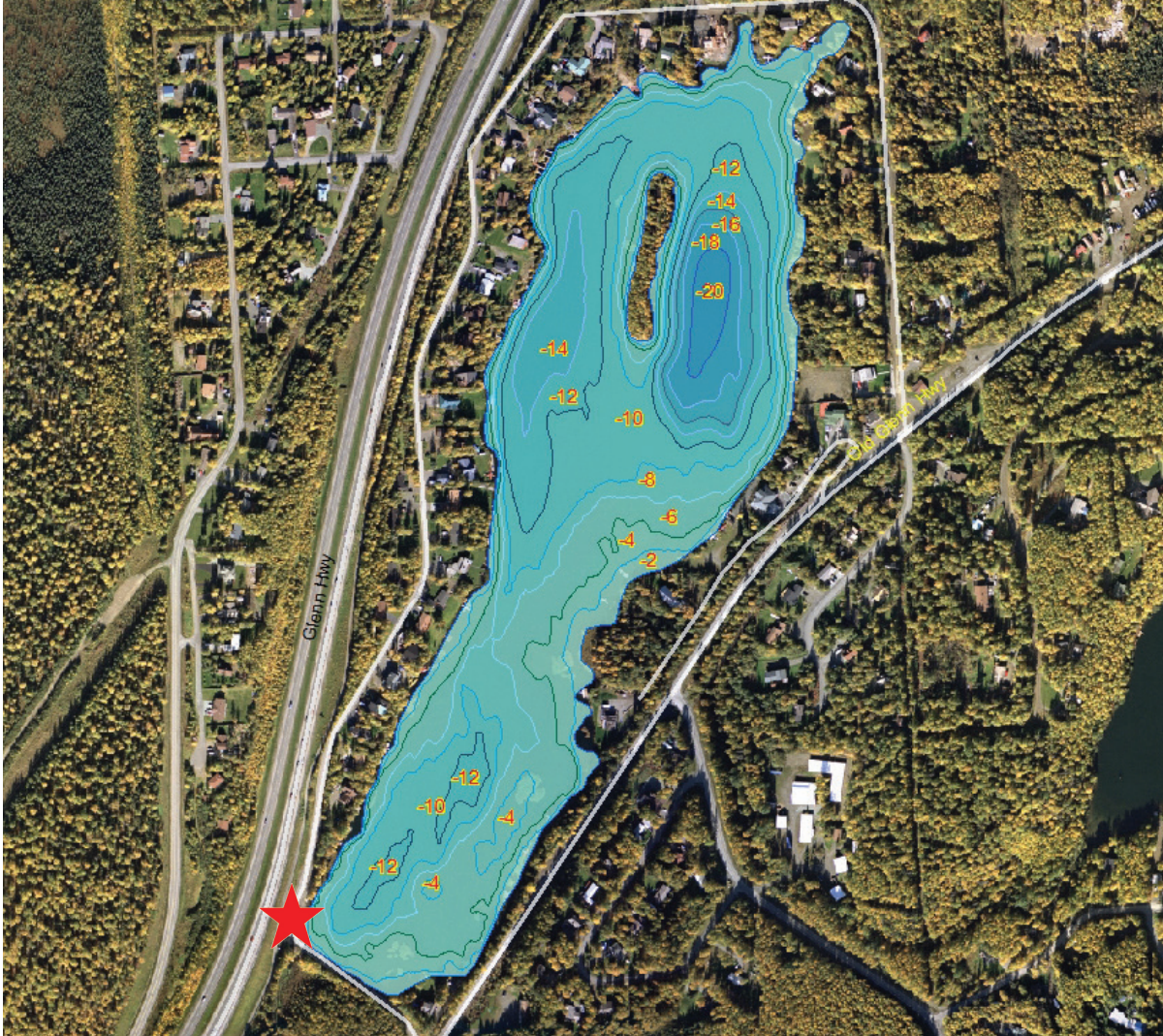
From MP 23.6 Glenn Highway – Take Mirror Lake exit and turn left at the “T”. Drive roughly 1.3 miles to Paradise Lane and take a right. Lake access is a short distance drive down Paradise Lane.

Species Stocked	# Stocking Events	Time of Year	Stocked As:
Rainbow Trout	1	Spring/Summer	Catchables

Catchables: In the range of 7 to 12 inches; determined to be of adequate size for sport anglers to harvest for a meal.

Lower Fire Lake

Lower Fire Lake is located north of Anchorage in Eagle River. Invasive Northern pike were eradicated from Lower Fire Lake and Fire Creek in the fall of 2022. Stocking of rainbow trout in Lower Fire Lake is anticipated to begin in spring/summer 2023.



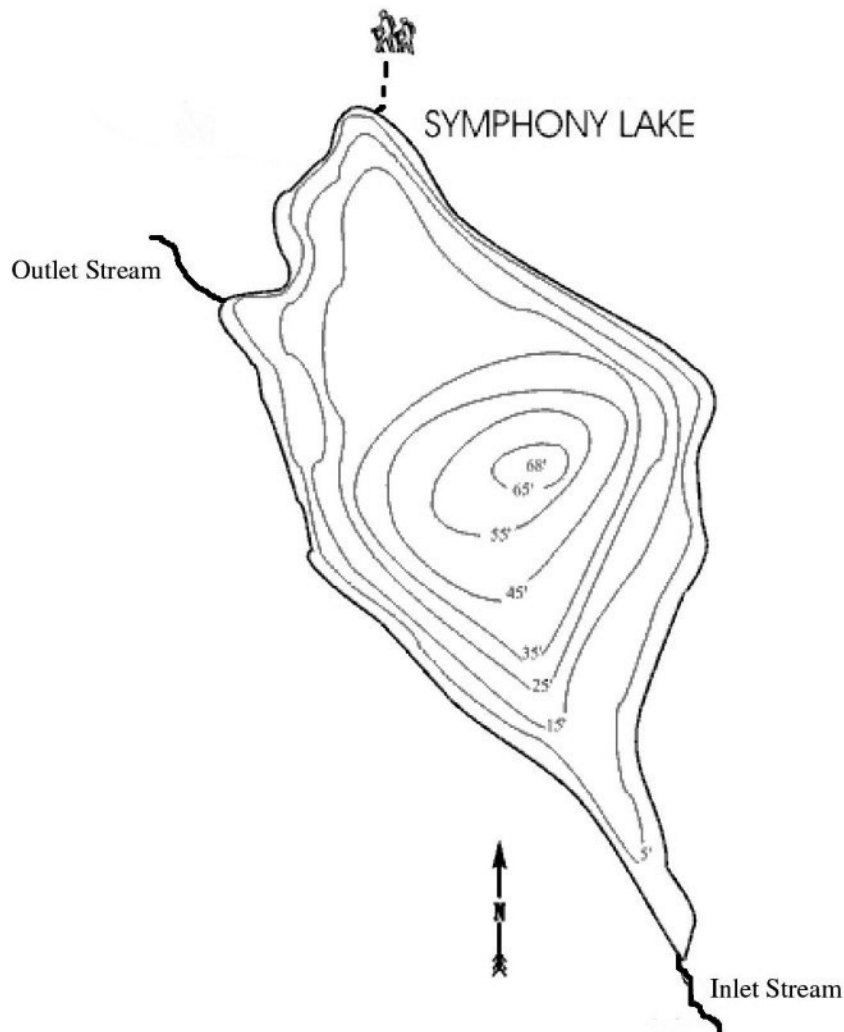
Access Information:

★ Public Access Point

From MP 15.3 Glenn Highway – Take north Eagle River exit and turn right. Drive 0.1 miles and take a left onto the Old Glenn Highway. Drive north on the Old Glenn Highway 0.5 miles and turn left onto West Lake Ridge Drive. Short distance to the lake on the right.

Symphony Lake

Symphony Lake is located in Eagle River off Hiland Road. Remote lake that requires a 6 mile hike in, but it's a great spot for grayling fishing!



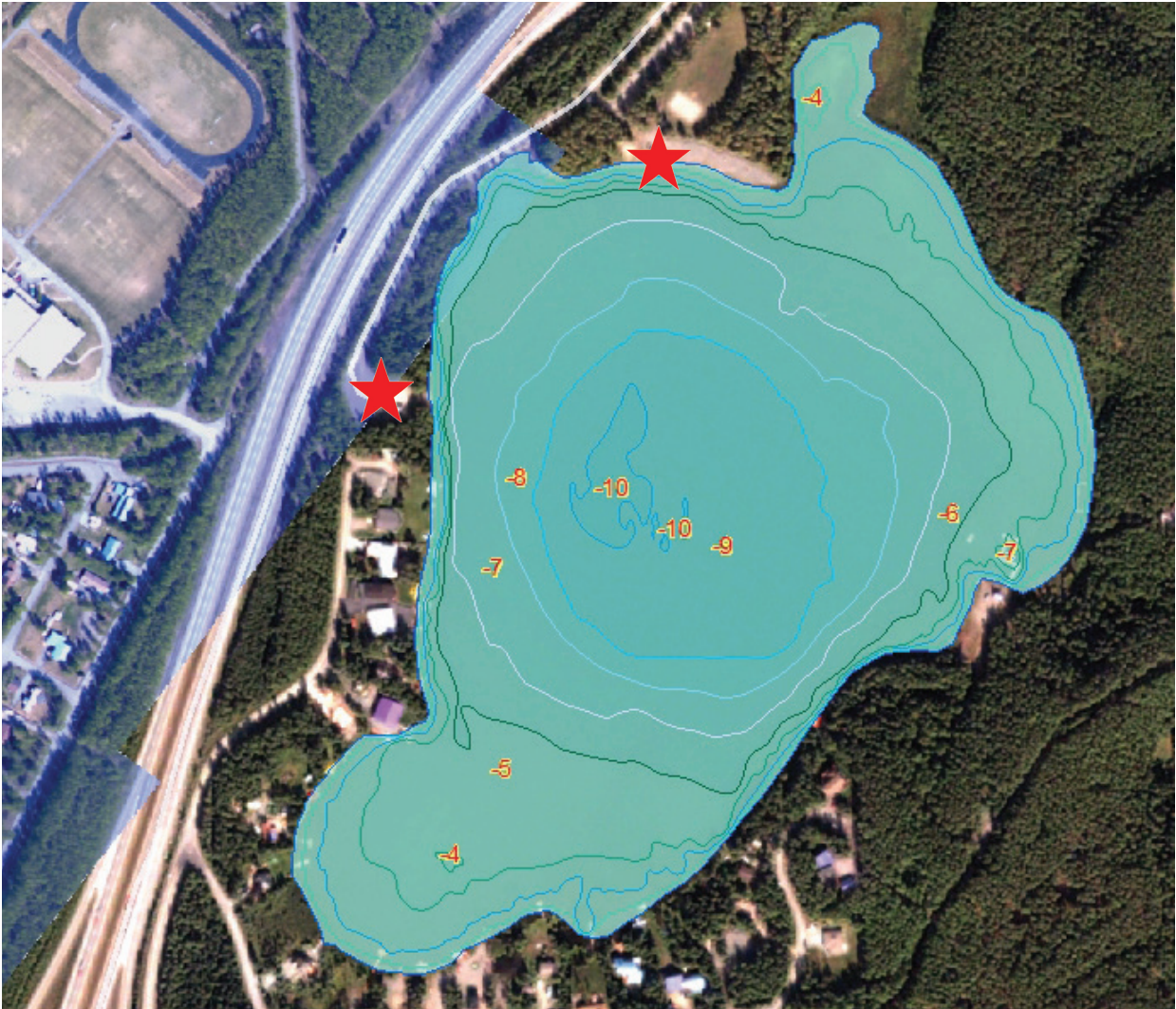
Access Information:

From MP 122.2 on the New Seward Highway – Hiland Road exit. Travel south on Hiland Road for 7 miles to South Fork Eagle River Valley Trailhead in Chugach State Park. Hike 6 miles on the trail to the lake.

Arctic Grayling	Symphony Lake was stocked with grayling many years ago and now supports a self-sustaining population of grayling.
-----------------	---

Mirror Lake

Mirror Lake is located north of Anchorage in Chugiak.
Great family fishing location from shore or from a canoe or inflatable.



Access Information:

★ Public Access Point

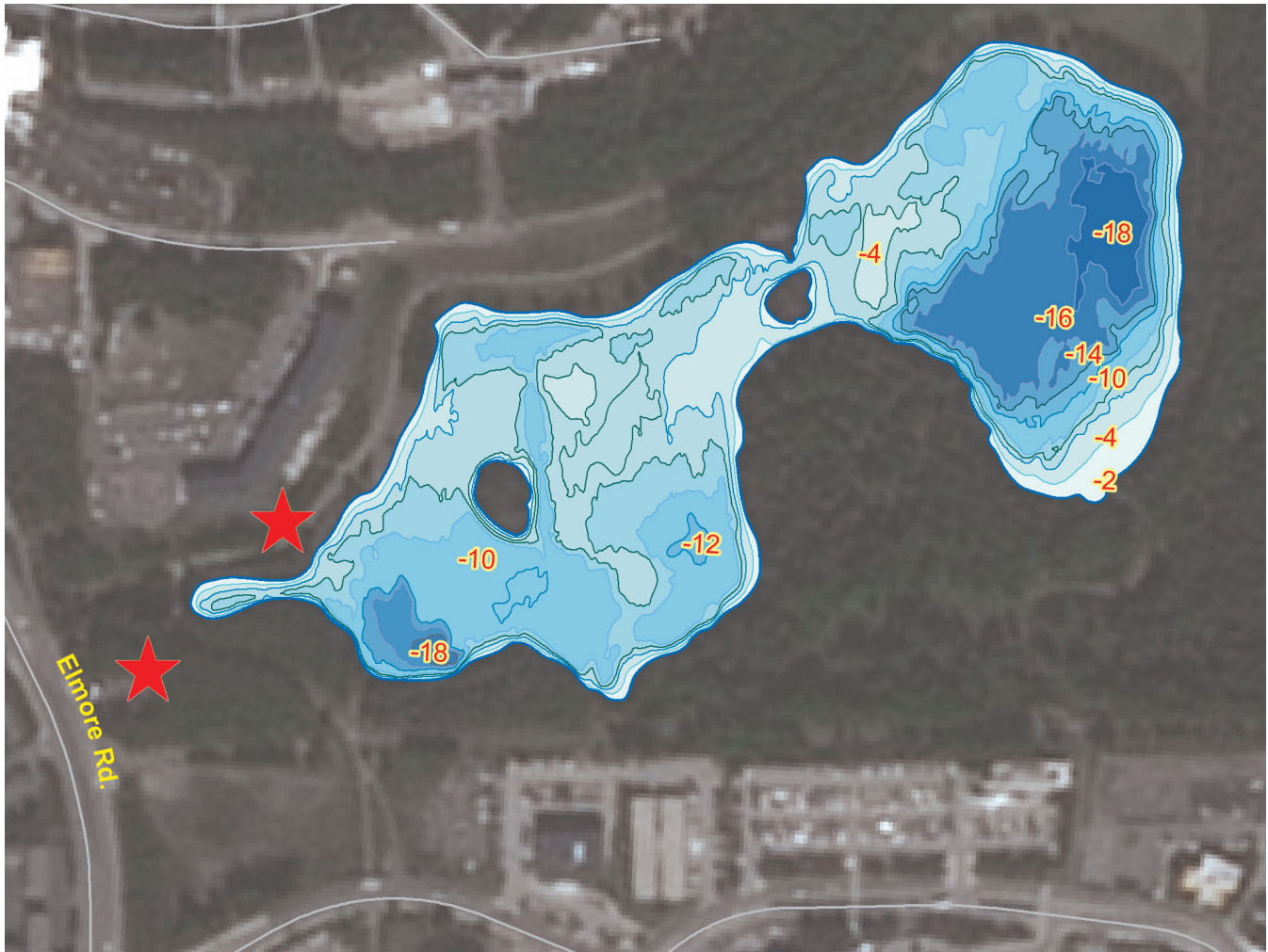
From MP 23.6 Glenn Highway – Take Mirror Lake exit and turn right at the “T”. Drive a short distance to the lake.

Species Stocked	# Stocking Events	Time of Year	Stocked As:
Rainbow Trout	3	Spring/Summer	Catchables
Chinook Salmon	2	Fall/Winter	Catchables

Catchables: In the range of 7 to 12 inches; determined to be of adequate size for sport anglers to harvest for a meal.

APU/University Lake

APU/University Lake is located in the university district in Anchorage.
Great shore fishing. A popular dog park surrounds the lake.



Access Information:

★ Public Access Point

From New Seward Hwy/Tudor Road – 1.6 miles to Bragaw Street. Left on Bragaw, .5 mile to University Drive. Right on University Drive, 0.5 miles to parking behind Grace Hall.

Reminder: APU/University is part of the Chester Creek drainage and is closed to all fishing April 15 - June 14. Chester Creek is stocked, APU/University Lake is not stocked.

Species Stocked	# Stocking Events	Time of Year	Stocked As:
Rainbow Trout	1	Spring	Catchables

Campbell Point Lake

Campbell Point (aka Beer Can) Lake is located in Kincaid Park in Anchorage.
Great fishing from a dock, as well as from shore.



Access Information:

★ Public Access Point

From MP 122.2 on the New Seward Highway – Drive west on Dimond Boulevard roughly 1.2 miles and turn right onto C Street. Head north on C Street roughly 1 mile and turn left onto Raspberry Road. Drive west on Raspberry Road roughly 4.2 miles and turn right on access road at Kincaid Park entrance. Follow dirt road roughly 0.6 miles to the lake.

Species Stocked	# Stocking Events	Time of Year	Stocked As:
Arctic Char	1	Fall/Winter	Broodstock
Rainbow Trout	2	Spring/Summer	Catchables
Chinook Salmon	1	Fall/Winter	Catchables

Catchables: In the range of 7 to 12 inches; determined to be of adequate size for sport anglers to harvest for a meal.

Broodstock: Adults that have reached maturity and have spawned once before release. These fish provide eggs to produce future generations of hatchery fish.

Cheney Lake

Cheney Lake is located in east Anchorage.
Great bank access as public trails surround most of the lake shore.



Access Information:

★ Public Access Point

From MP 4.4 on the Glenn Highway – Exit east onto Muldoon Road and drive 1.1 miles to Debarr Road. Turn right on Debarr Road and drive 0.9 miles to Beaver Place. Take a left onto Beaver Place and drive 0.6 miles to Cheney Lake. Parking is adjacent to lake with picnic area, playground and handicap access.

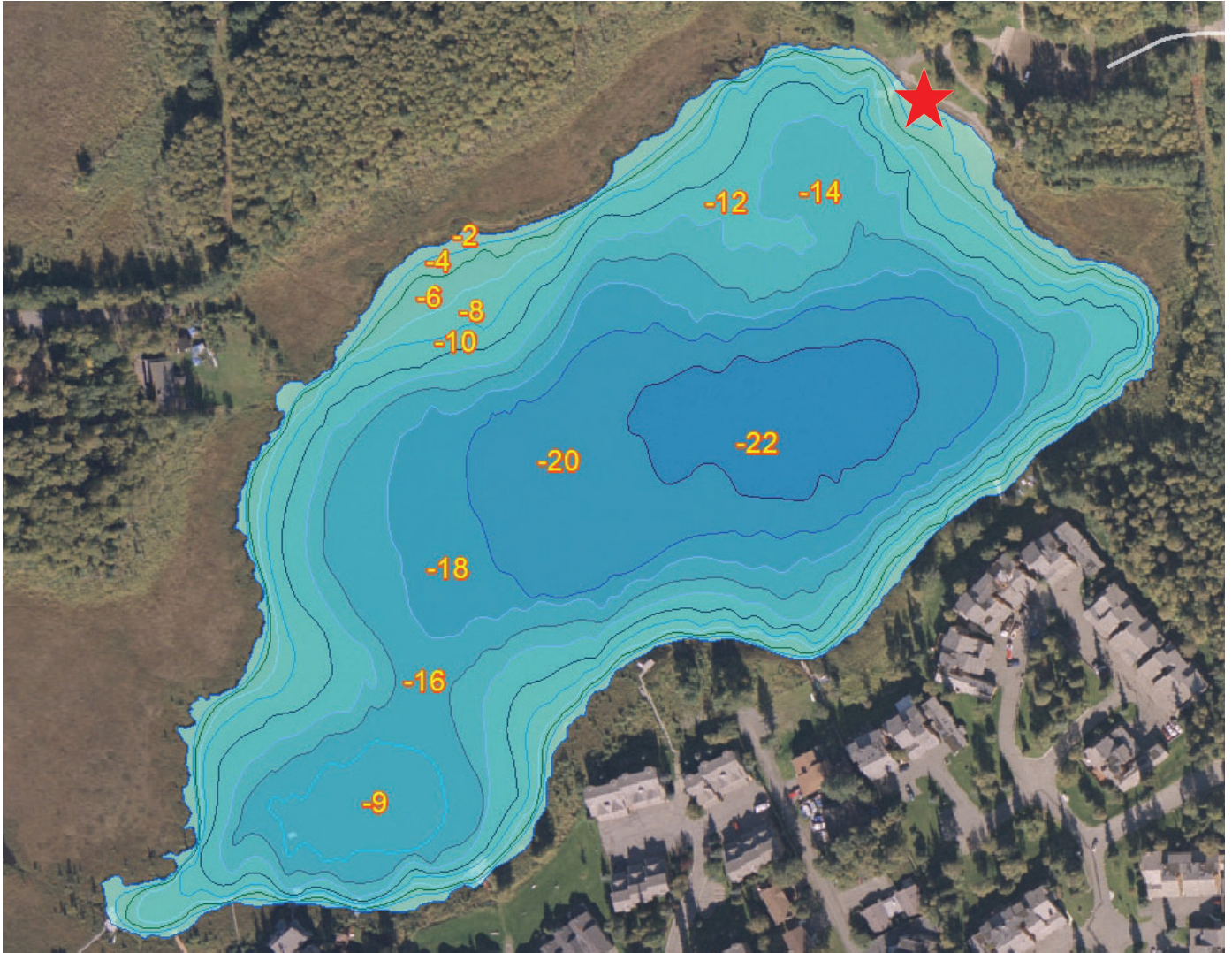
Species Stocked	# Stocking Events	Time of Year	Stocked As:
Rainbow Trout	1	Fall/Winter	Broodstock
Rainbow Trout	2	Spring/Summer	Catchables
Chinook Salmon	2	Fall/Winter	Catchables

Catchables: In the range of 7 to 12 inches; determined to be of adequate size for sport anglers to harvest for a meal.

Broodstock: Adults that have reached maturity and have spawned once before release. These fish provide eggs to produce future generations of hatchery fish.

DeLong Lake

DeLong Lake is located near the Anchorage International Airport. Great fishing from a canoe or inflatable as shore access is limited.



Access Information:

★ Public Access Point

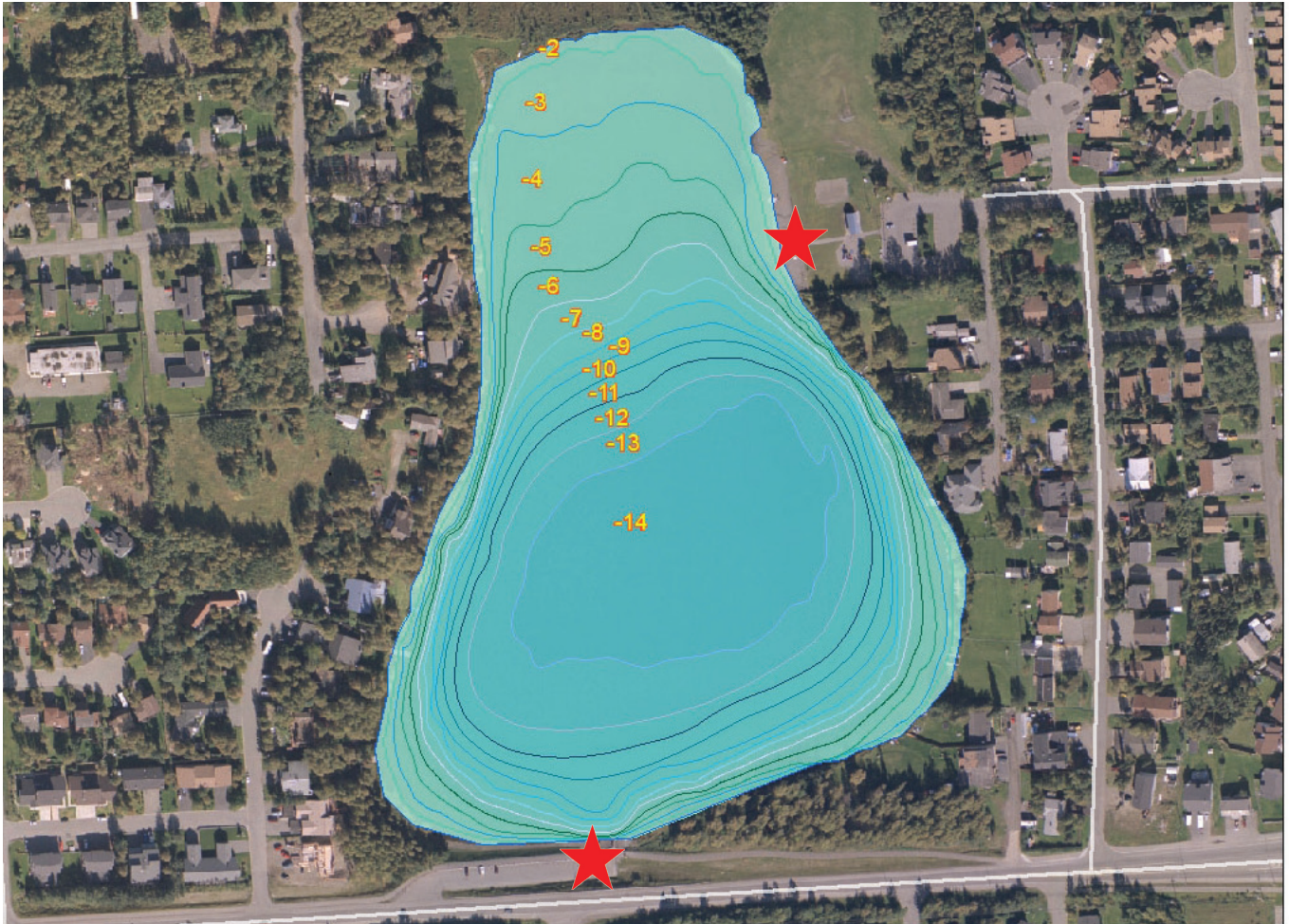
From MP 122.2 on the New Seward Highway – Drive west on Dimond Boulevard roughly 1.2 miles and turn right onto C Street. Head north on C Street roughly 1 mile and turn left onto Raspberry Road. Drive west on Raspberry Road roughly 1.3 miles and turn right on Jewel Lake Road. Drive north on Jewel Lake road roughly 0.3 miles and turn left into DeLong Lake parking area.

Species Stocked	#Stocking Events	Time of Year	Stocked As:
Rainbow Trout	2	Spring/Summer	Catchables
Chinook Salmon	1	Fall/Winter	Catchables

Catchables: In the range of 7 to 12 inches; determined to be of adequate size for sport anglers to harvest for a meal.

Jewel Lake

Jewel Lake is located in southwest Anchorage.
Great place to fish from shore, and plenty of other great attractions here for families.



Access Information:

★ Public Access Point

Access point 1: From MP 122.2 on the New Seward Highway – Drive west on Dimond Boulevard roughly 3.7 miles and find access to Jewel Lake on the right.

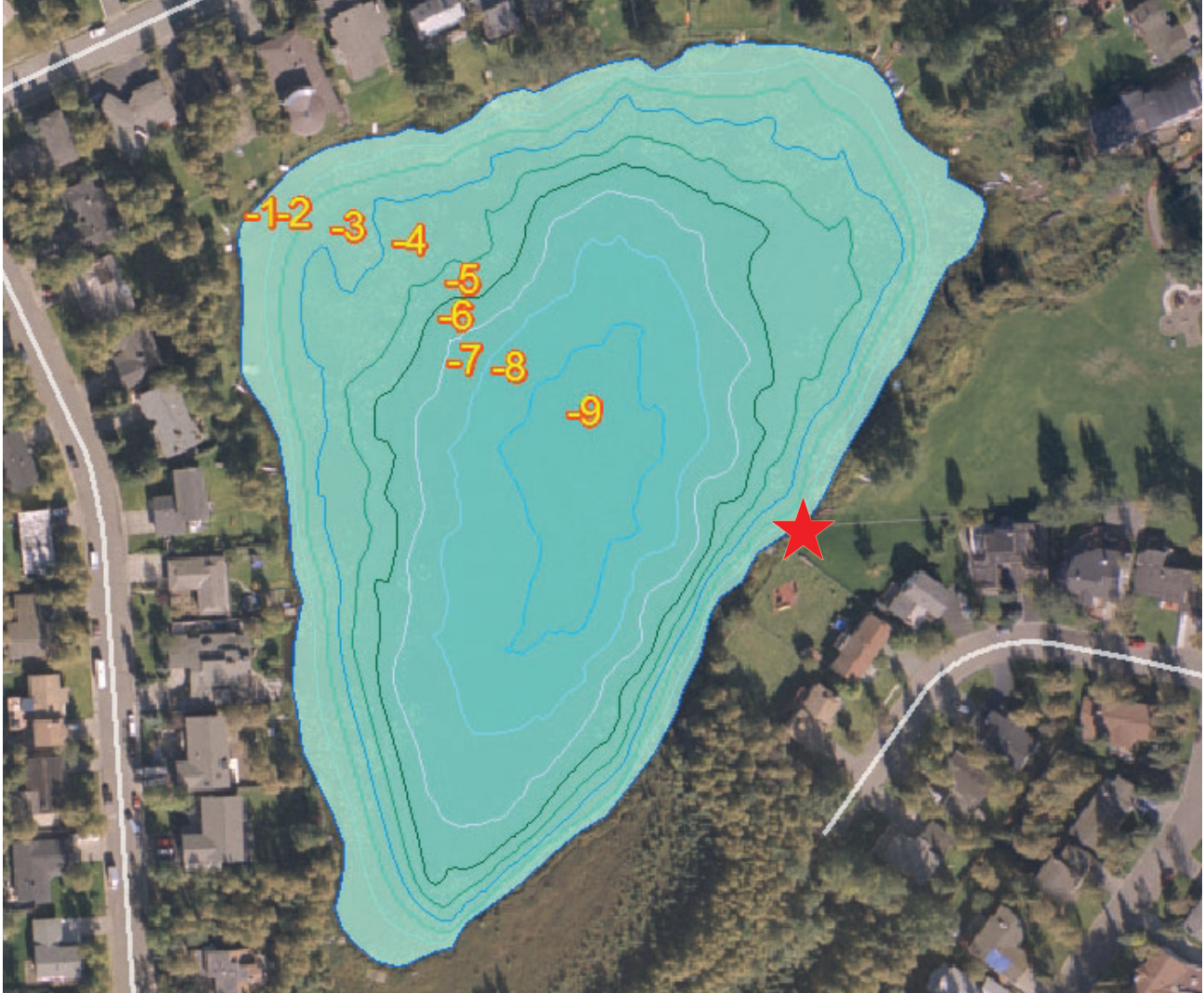
Access point 2: From MP 122.2 on the New Seward Highway – Drive west on Dimond Boulevard roughly 3.2 miles and turn right onto Jewel Lake Road. Drive north on Jewel Lake Road roughly 0.2 miles and turn left onto 88th Ave. Drive 0.2 miles on 88th Ave. to Municipality of Anchorage Park with parking.

Species Stocked	# Stocking Events	Time of Year	Stocked As:
Rainbow Trout	3	Spring/Summer	Catchables
Chinook Salmon	2	Fall/Winter	Catchables

Catchables: In the range of 7 to 12 inches; determined to be of adequate size for sport anglers to harvest for a meal.

Lake Otis

Lake Otis is located in midtown Anchorage. Quiet fishing location, as most of the shore is privately owned. Lake Otis is a good spot for a canoe or float tube.



Access Information:

★ Public Access Point

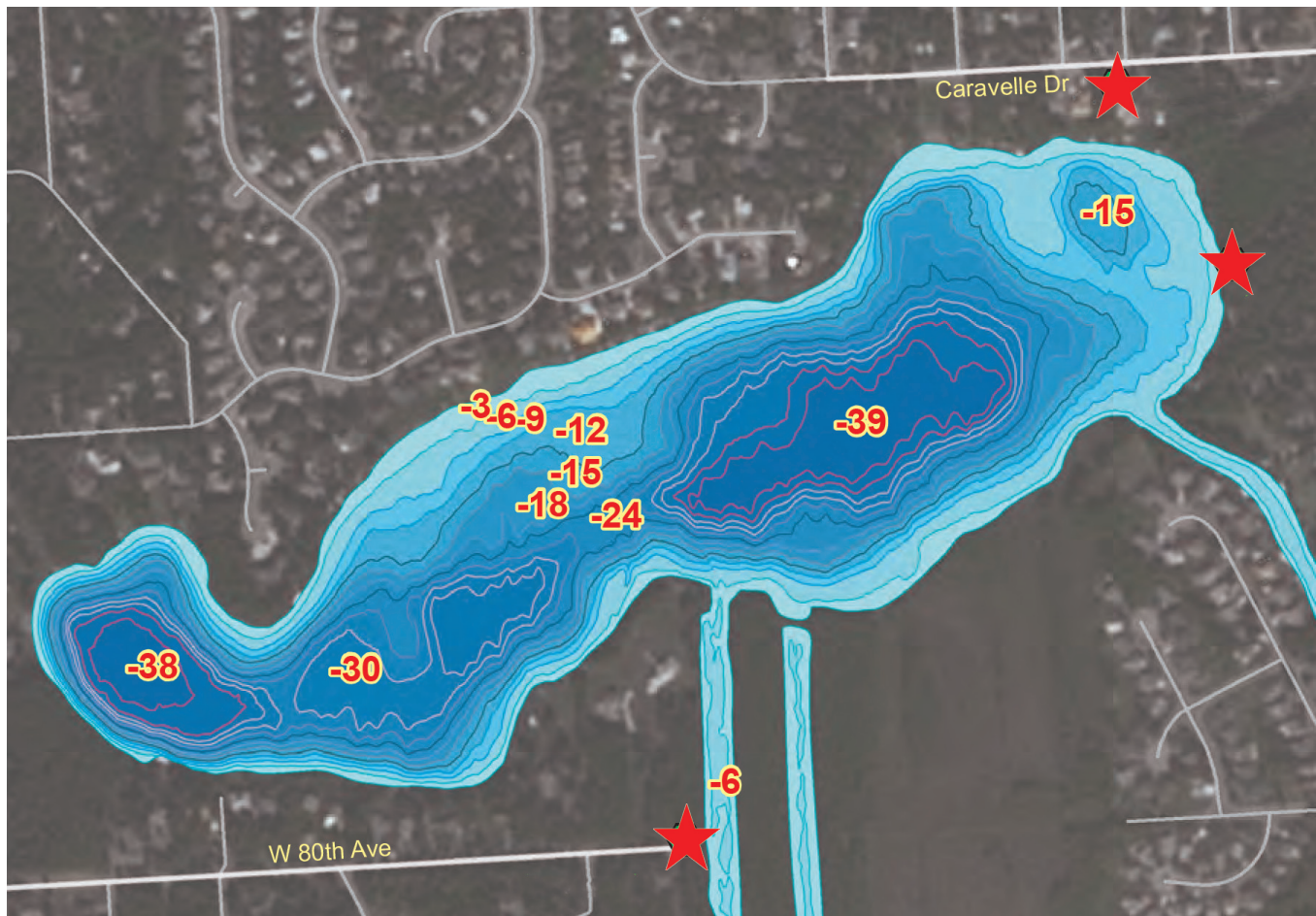
From MP 125.3 on the New Seward Highway – Drive east on 36th Ave. Drive .8 miles to Lake Otis Parkway. Take a left onto Lake Otis Parkway and drive 0.2 miles to Cornell Court. Take a left onto Cornell Court and drive 0.1 miles to Carlson Park sign. Access to this lake is through the trail to Carlson Park. Parking is available along Stanford Drive. Follow paved trail roughly 100 yards to lake.

Species Stocked	# Stocking Events	Time of Year	Stocked As:
Rainbow Trout	1	Spring/Summer	Catchables

Catchables: In the range of 7 to 12 inches; determined to be of adequate size for sport anglers to harvest for a meal.

Sand Lake

Sand Lake is located in southwest Anchorage.
Great boating and canoeing location, as most of the shore is privately owned.



Access Information:

★ Public Access Point

From MP 122.2 on the New Seward Highway – Drive west on Dimond Boulevard roughly 1.2 miles and turn right onto C Street. Head north on C Street roughly 1 mile and turn left onto Raspberry Road. Drive west on Raspberry Road roughly 3.2 miles and turn left on Sand Lake Road. Drive south on Sand Lake road roughly 0.7 miles and turn left onto 80th Ave. Drive 0.5 miles to canal access.

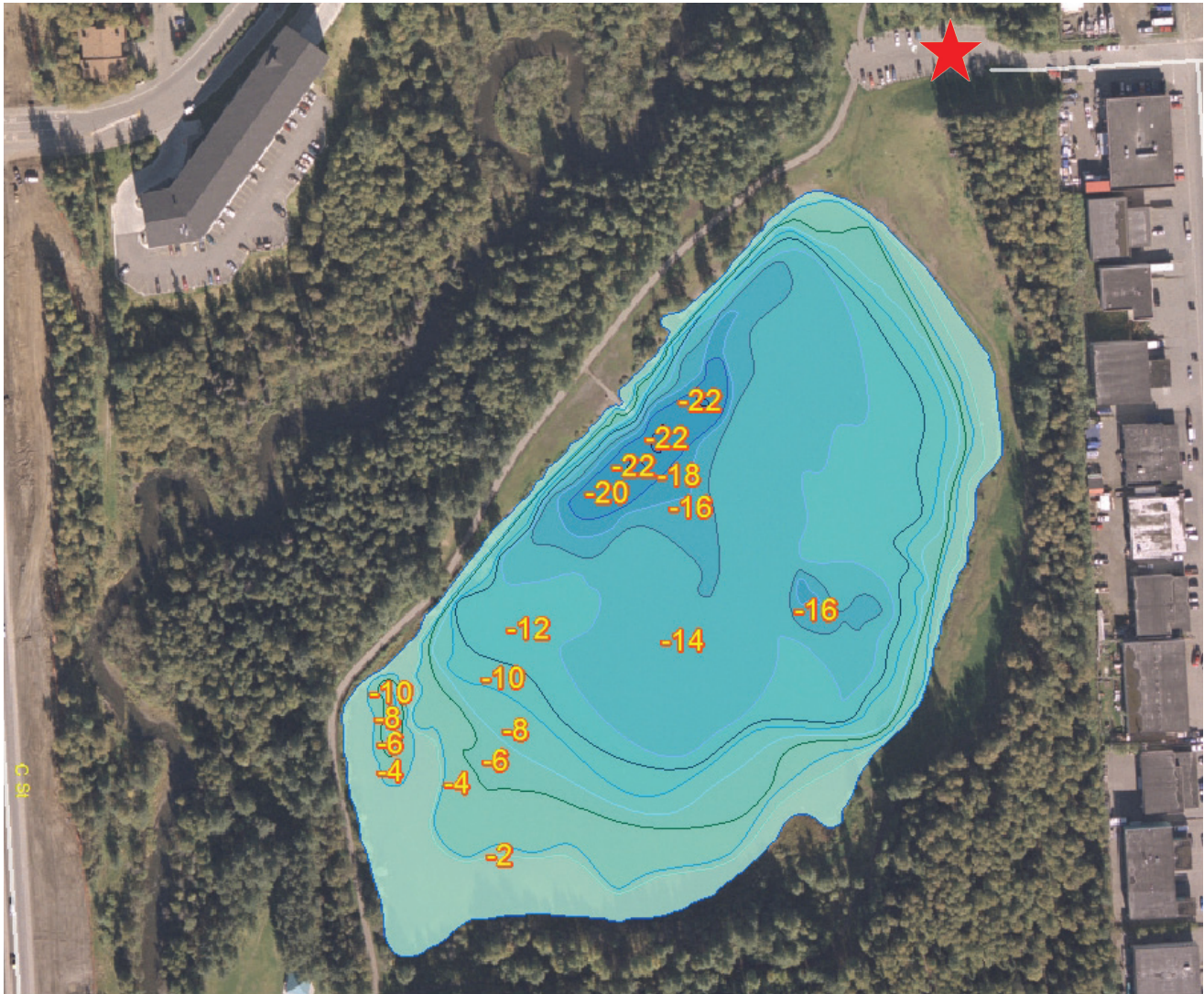
Species Stocked	# Stocking Events	Time of Year	Stocked As:
Arctic Char	2	Fall/Winter, Spring/Summer	Broodstock, Catchables
Arctic Grayling	1	Spring/Summer	Catchables
Rainbow Trout	2	Spring/Summer	Catchables
Chinook Salmon	1	Fall/Winter	Catchables

Catchables: In the range of 7 to 12 inches; determined to be of adequate size for sport anglers to harvest for a meal.

Broodstock: Adults that have reached maturity and have spawned once before release. These fish provide eggs to produce future generations of hatchery fish.

Taku-Campbell Lake

Taku-Campbell Lake is located in southwest Anchorage.
Plenty of bank access with nice walking trails following Campbell Creek.



Access Information:

★ Public Access Point

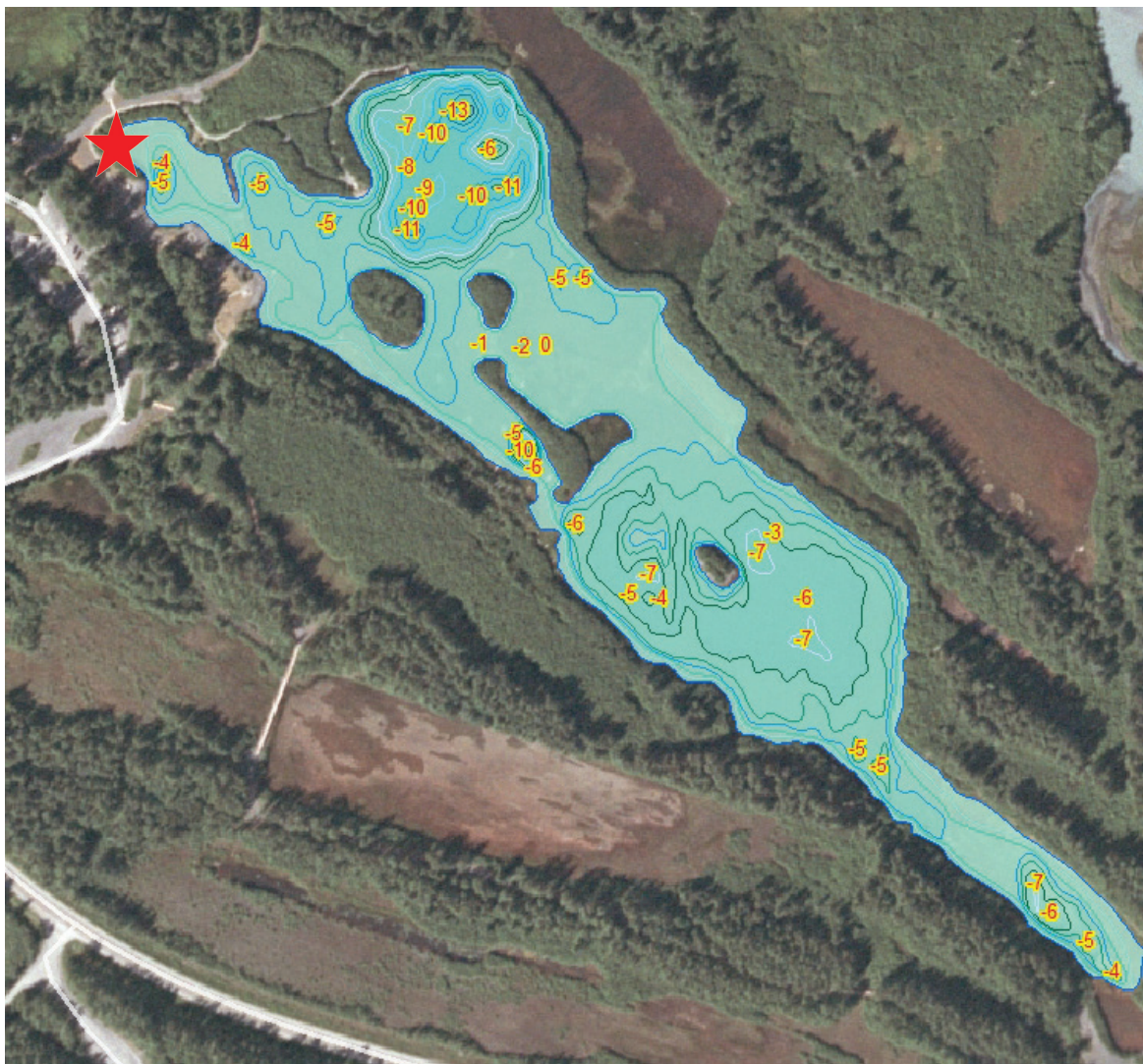
From MP 122.2 on the New Seward Highway – Drive west on Dimond Boulevard roughly 0.7 miles and turn right onto King Street. Drive north on King Street roughly 0.5 miles and turn left into Taku Lake parking area.

Species Stocked	# Stocking Events	Time of Year	Stocked As:
Rainbow Trout	2	Spring/Summer	Catchables
Chinook Salmon	1	Fall/Winter	Catchables

Catchables: In the range of 7 to 12 inches; determined to be of adequate size for sport anglers to harvest for a meal.

Airstrip/Willow Pond

Airstrip/Willow Pond is a short drive south of the town of Girdwood.
Great shore fishing as well as canoe or float tube.



Access Information:

★ Public Access Point

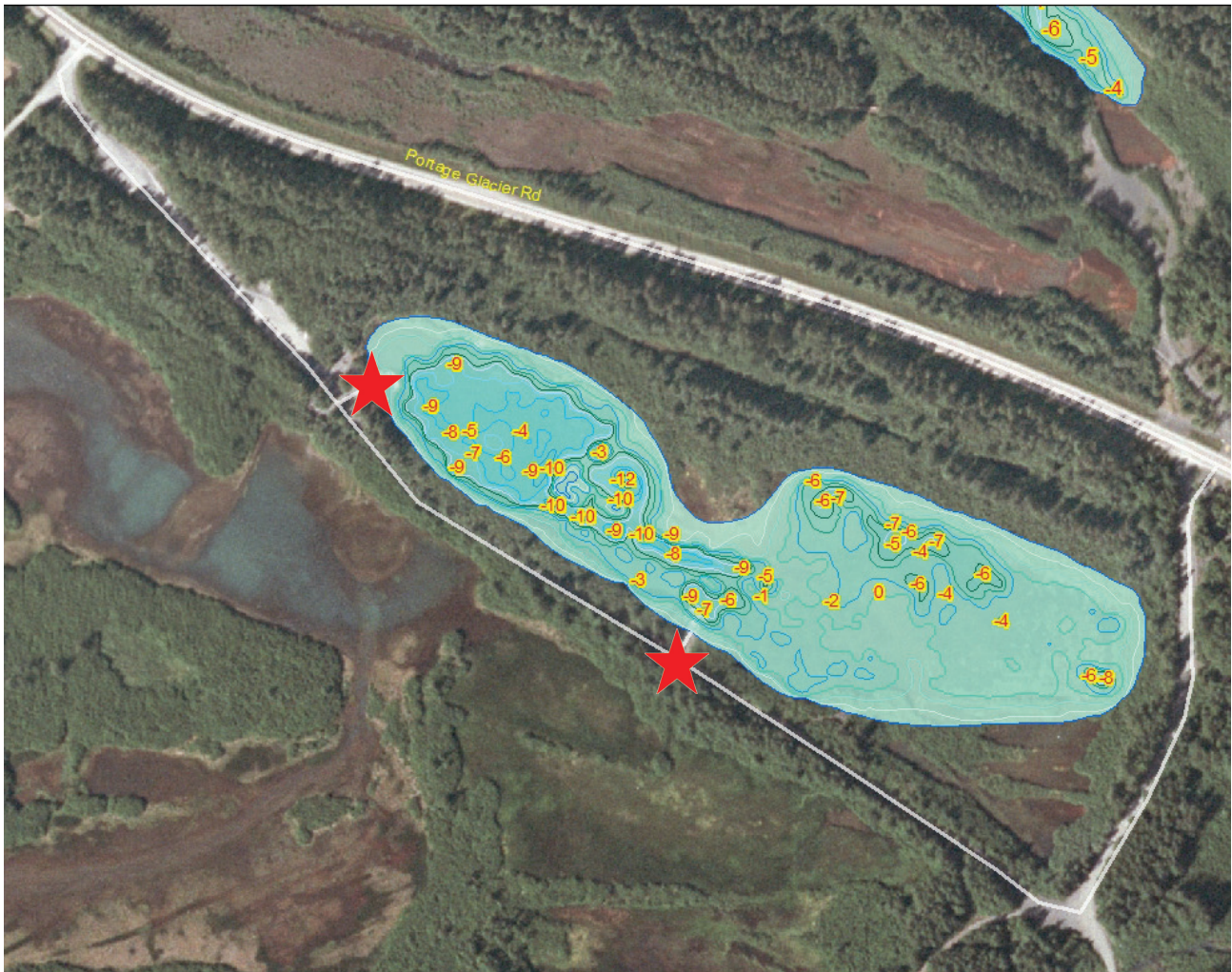
From MP 48.1 on the Seward Highway – Drive east on Portage Glacier Road for 1 mile to the paved road on north side (Moose Flats Recreation Area). Turn in and follow to Airstrip Pond.

Species Stocked	# Stocking Events	Time of Year	Stocked As:
Rainbow Trout	1	Spring/Summer	Catchables

Catchables: In the range of 7 to 12 inches; determined to be of adequate size for sport anglers to harvest for a meal.

Alder Pond

Alder Pond is a short drive south of the town of Girdwood.
Great rainbow trout fishing location.



★ Public Access Point

Access Information:

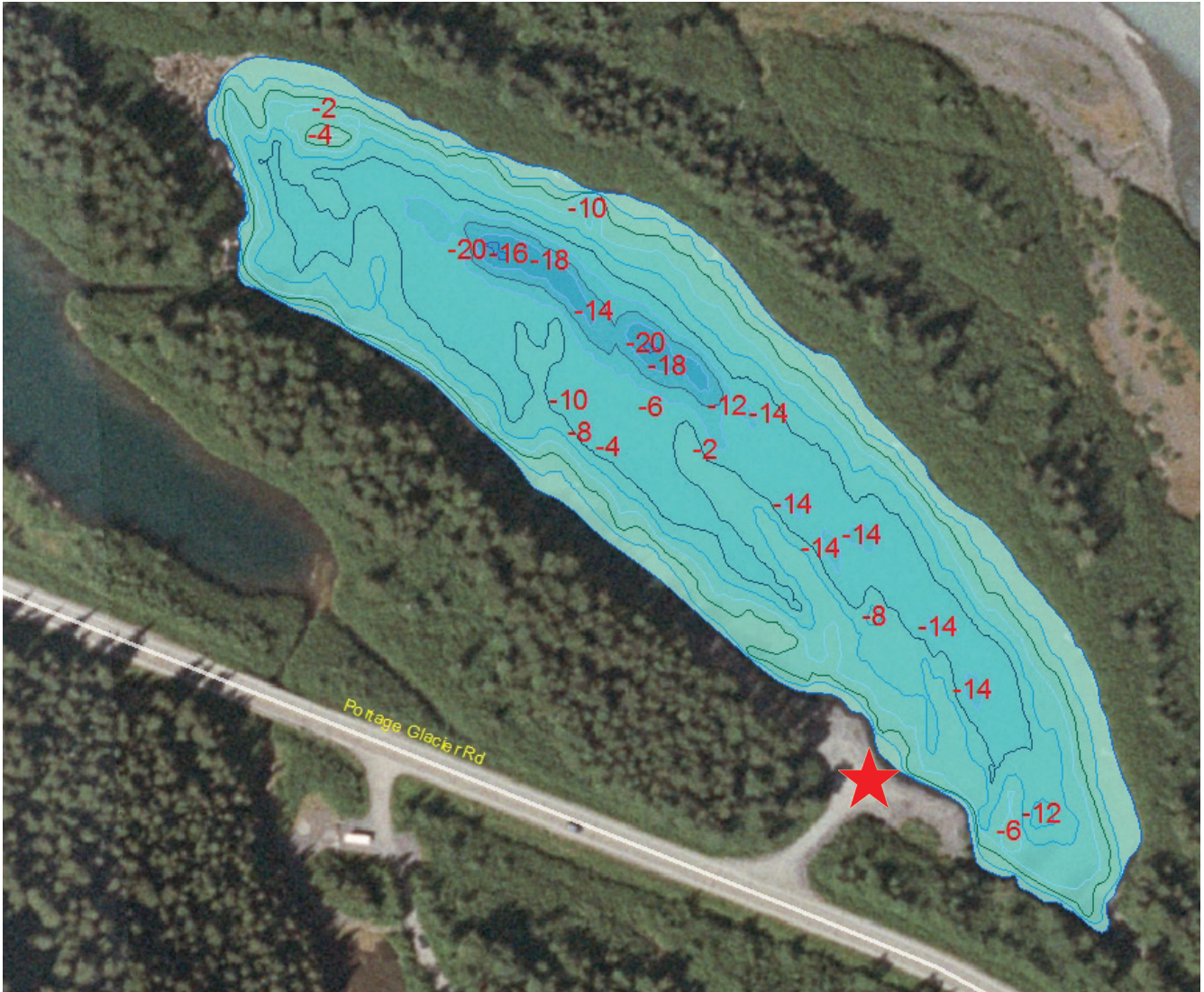
From MP 48.1 on the Seward Highway – Drive East on Portage Glacier Road 1.5 miles to dirt road on the south side of the road. Turn onto dirt road and make a left at the “Y”. Follow road to Alder Pond.

Species Stocked	# Stocking Events	Time of Year	Stocked As:
Rainbow Trout	1	Spring/Summer	Catchables

Catchables: In the range of 7 to 12 inches; determined to be of adequate size for sport anglers to harvest for a meal.

Tangle Pond

Tangle Pond is a short drive south of Girdwood.
Great location for a quiet canoe or inflatable fishing trip.



Access Information:

★ Public Access Point

From MP 48.1 on the New Seward Highway – Drive East on Portage Valley Road 2.3 miles to pullout on North side of road.

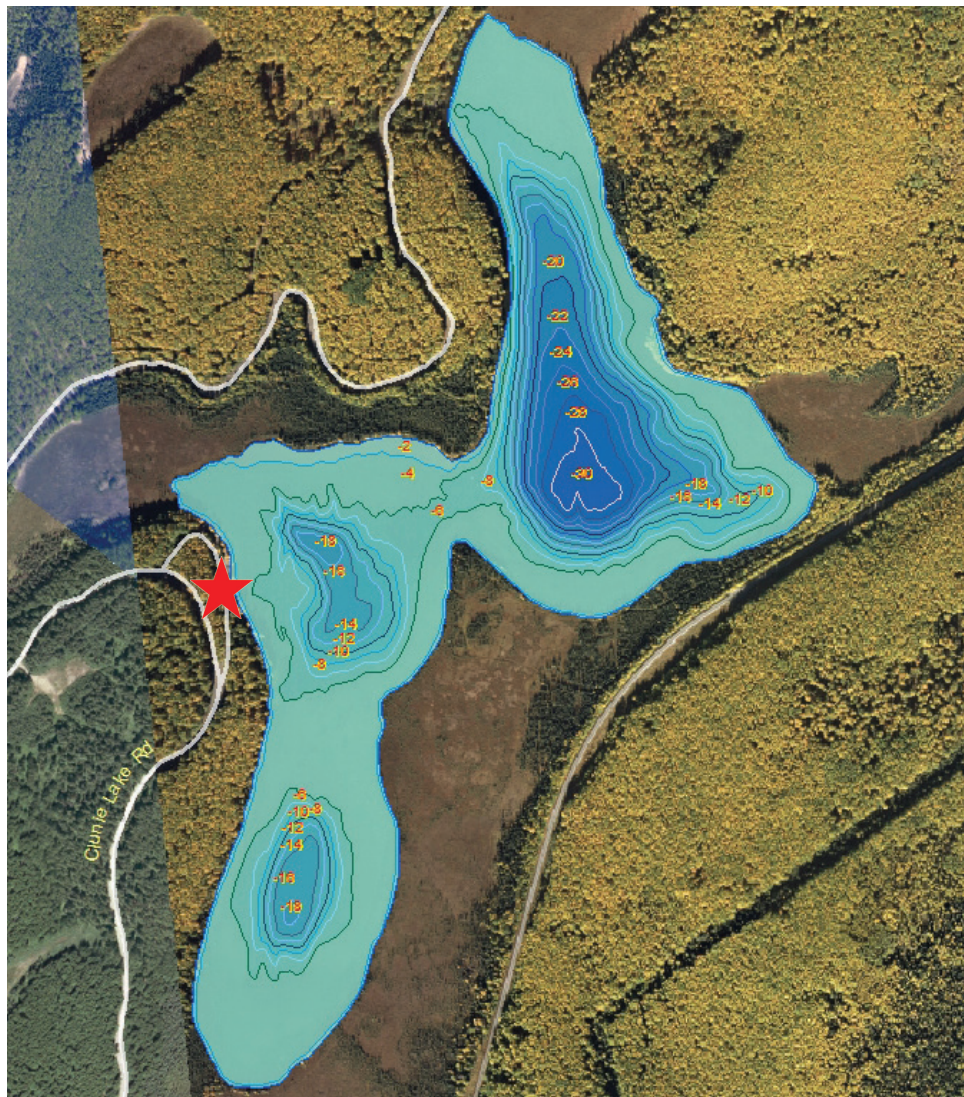
Species Stocked	# Stocking Events	Time of Year	Stocked As:
Rainbow Trout	1	Spring/Summer	Catchables

Catchables: In the range of 7 to 12 inches; determined to be of adequate size for sport anglers to harvest for a meal.

Clunie Lake

Clunie Lake is located on Joint Base Elmendorf-Richardson north of Anchorage.
Great fishing from a boat or from shore using the trail system.

To fish lakes on the military base, you must have an iSportsman pass issued by JBER and valid fishing license.



Access Information:

★ Public Access Point

From Ft. Rich/Arctic Valley gate drive straight on “D” St. 2.2 miles. Turn right on Otter Lake Road and drive 2.3 miles. Continue straight onto Route Bravo for 4.5 miles then turn right at the 3-way intersection onto Artillery Road. (there is a sign that reads “To All Lakes”). Continue for 3.7 miles until the turnoff for Clunie Lake (there is a sign at the turn off) on the right.

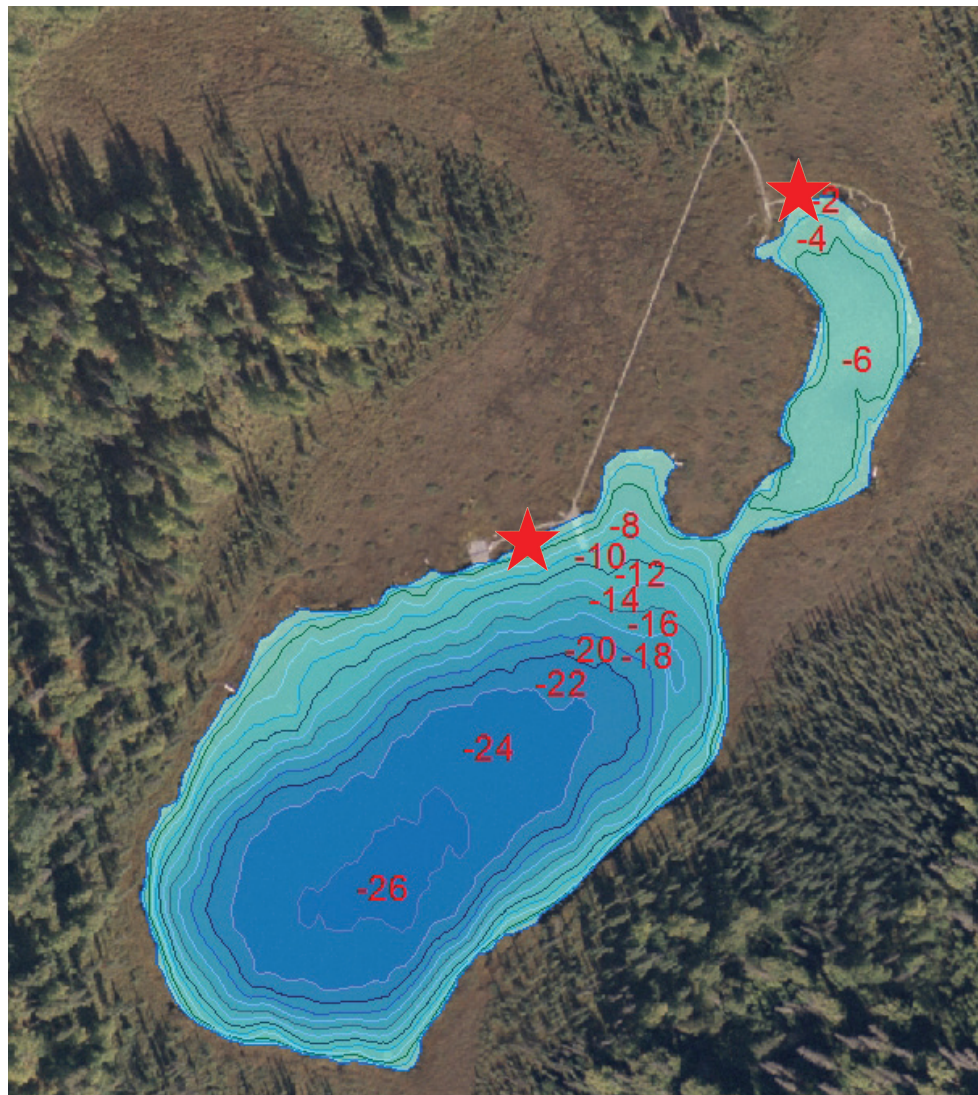
Species Stocked	# Stocking Events	Time of Year	Stocked As:
Arctic Char	1	Spring/Summer	Catchables
Rainbow Trout	2	Spring/Summer	Catchables
Chinook Salmon	1	Fall/Winter	Catchables

Catchables: In the range of 7 to 12 inches; determined to be of adequate size for sport anglers to harvest for a meal.

Fish Lake

Fish Lake is located on Joint Base Elmendorf-Richardson north of Anchorage.
Boardwalks available for shore access, as well as a dock to fish from.

To fish lakes on the military base, you must have a military sponsor to get access, as well as an iSportsman pass issued by JBER and valid fishing license.



Access Information:

★ Public Access Point

From Boniface gate drive straight onto Vandenberg Ave. At 0.7 mi turn right at stoplight and continue on Vandenberg Ave. Continue 1.9 miles then turn right at Talley Road (dirt road with sign "To Lakes"). Continue 0.2 miles, turn left onto Dena' ina Rd. and drive 0.3 miles. Turn right onto road marked Fish Lake and drive 0.7 miles. Turn left after restroom facility and continue down dirt road approximately 0.2 miles to arrive at Fish Lake parking area. do not drive on road if hill conditions are poor.

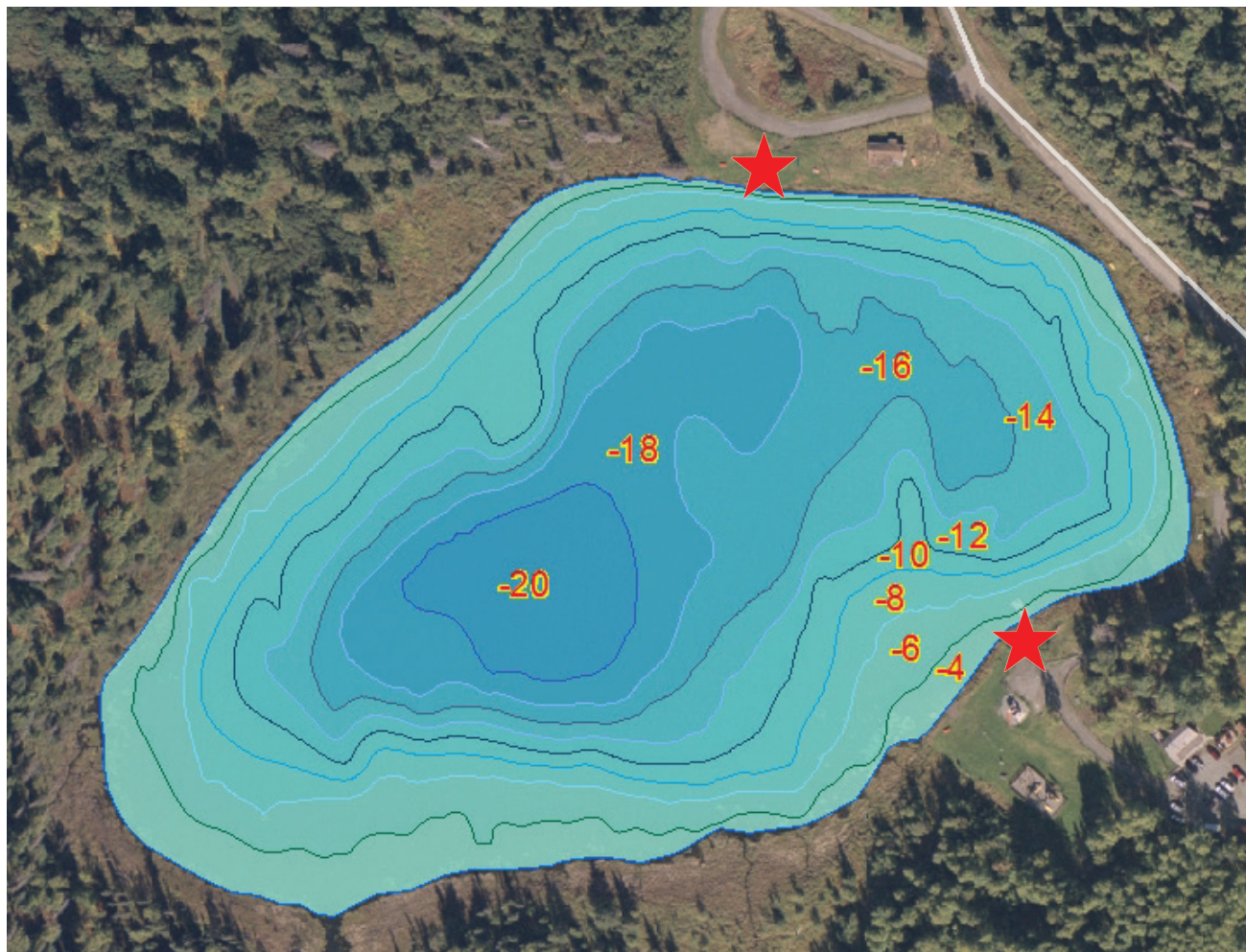
Species Stocked	# Stocking Events	Time of Year	Stocked As:
Rainbow Trout	1	Spring/Summer	Catchables
Arctic Char	1	Spring/Summer	Catchables

Catchables: In the range of 7 to 12 inches; determined to be of adequate size for sport anglers to harvest for a meal.

Green Lake

Green Lake is located on Joint Base Elmendorf-Richardson north of Anchorage.
Great lake access with a boat launch and picnic area.

To fish lakes on the military base, you must have a military sponsor to get access, as well as an iSportsman pass issued by JBER and valid fishing license.



Access Information:

★ Public Access Point

From Boniface gate drive straight onto Vandenberg Ave. At 0.7 miles, stay left at stoplight onto Arctic Warrior Drive. Continue 2.3 miles then turn right onto Fairchild Ave. Continue 1.7 miles, turn left onto Airlifter Road and drive 1.9 miles. Turn left onto Green Lake Road, to arrive at Green Lake parking area.

Species Stocked	# Stocking Events	Time of Year	Stocked As:
Rainbow Trout	1	Fall/Winter	Broodstock
Arctic Char	1	Spring/Summer	Catchables
Rainbow Trout	1	Spring/Summer	Catchables
Chinook Salmon	1	Fall/Winter	Catchables

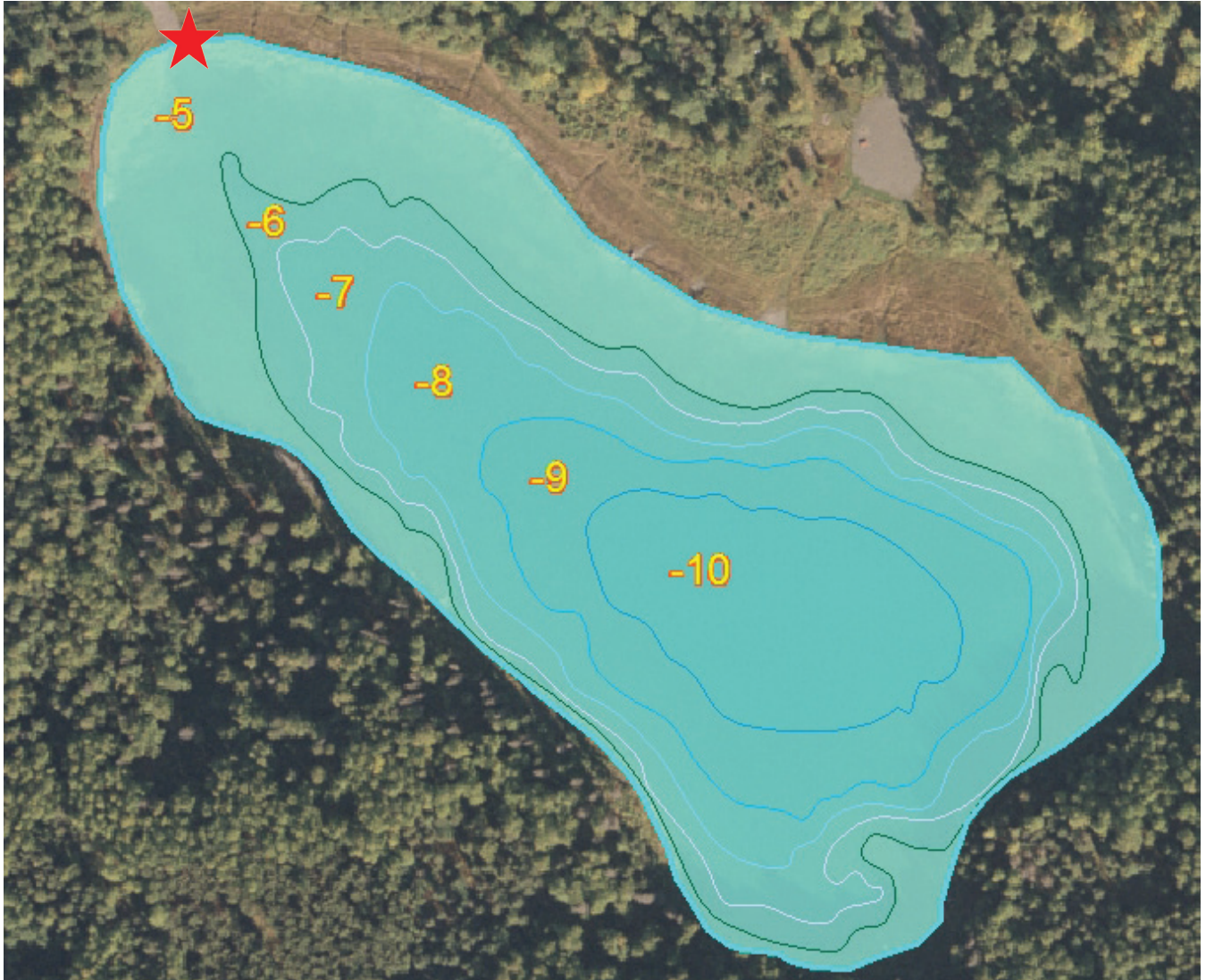
Catchables: In the range of 7 to 12 inches; determined to be of adequate size for sport anglers to harvest for a meal.

Broodstock: Adults that have reached maturity and have spawned once before release. These fish provide eggs to produce future generations of hatchery fish.

Gwen Lake

Gwen Lake is located on Joint Base Elmendorf-Richardson north of Anchorage.
Great spot for boating, as well as shore fishing along the east and west sides.

To fish lakes on the military base, you must have an iSportsman pass issued by JBER and valid fishing license.



Access Information:

★ Public Access Point

From Ft. Rich/Arctic Valley gate, continue straight on “D” St. for 2.2 miles. Turn right on Otter Lake Road. Drive 2.3 miles and continue straight onto Route Bravo. Continue 1.3 miles, turn right on unmarked Gwen Lake Road (There will be a sign down the hill from the turn where the road T’s that reads “Gwen Lake”). Veer right at the sign. In less than 0.1 mile the road dead ends at the lake and an undeveloped boat launch.

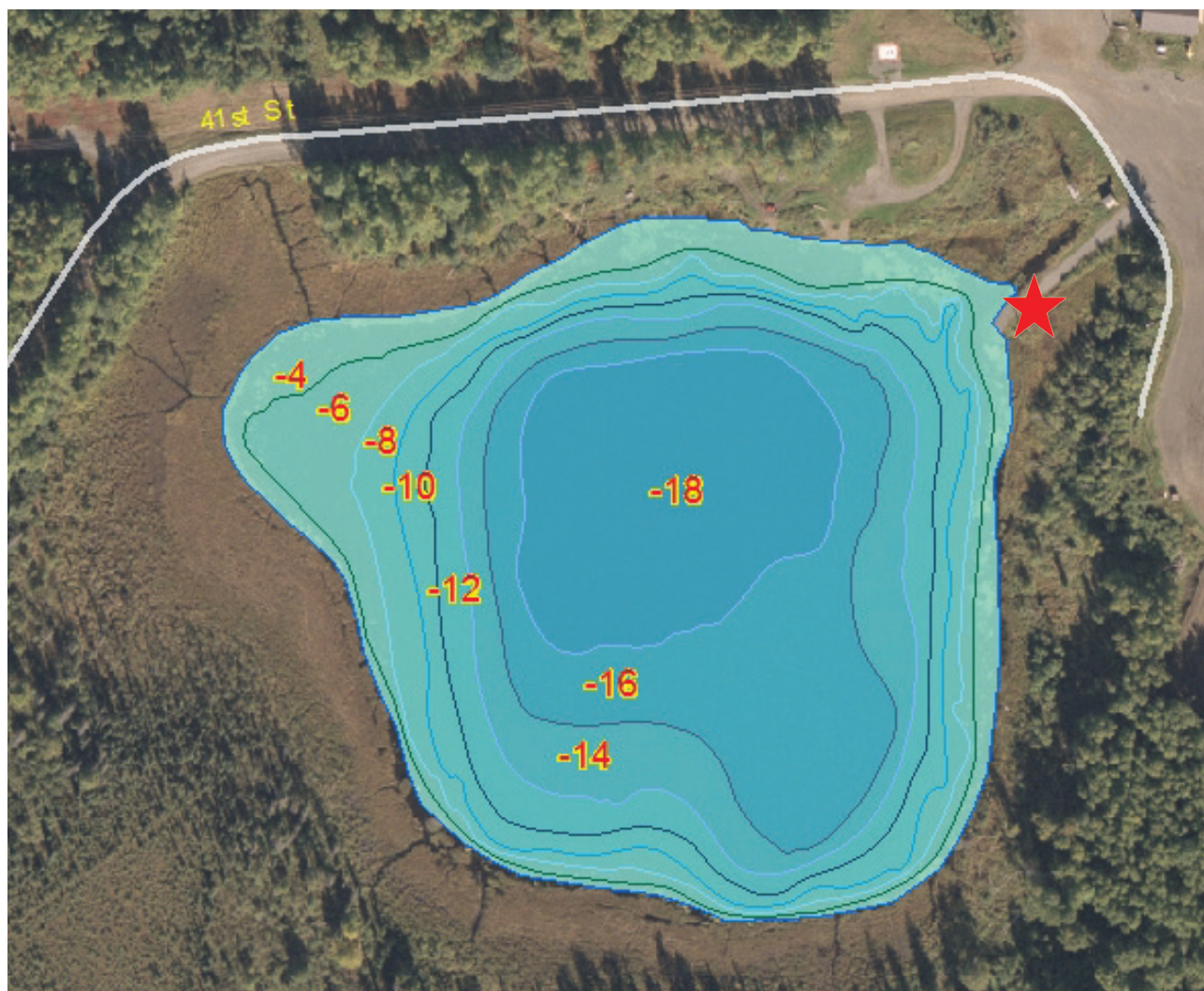
Species Stocked	# Stocking Events	Time of Year	Stocked As:
Rainbow Trout	1	Spring/Summer	Catchables

Catchables: In the range of 7 to 12 inches; determined to be of adequate size for sport anglers to harvest for a meal.

Hillberg Lake

Hillberg Lake is located on Joint Base Elmendorf-Richardson north of Anchorage.
Great boat access with a launch on the northwest lake shore.

To fish lakes on the military base, you must have a military sponsor to get access, as well as an iSportsman pass issued by JBER and valid fishing license.



Access Information:

★ Public Access Point

Starting at Boniface gate, continue straight onto Vandenberg Ave. At 0.7 miles, continue straight at stoplight and Arctic Warrior Drive. Follow 2.3 miles then turn right onto Fairchild Ave. Drive 1.5 miles, then turn left onto Airlifter Drive for 1.7 miles. Turn right onto Hillberg Ski Lodge Road, continue 0.2 miles and arrive at lake parking lot. Foot path leads towards lake.

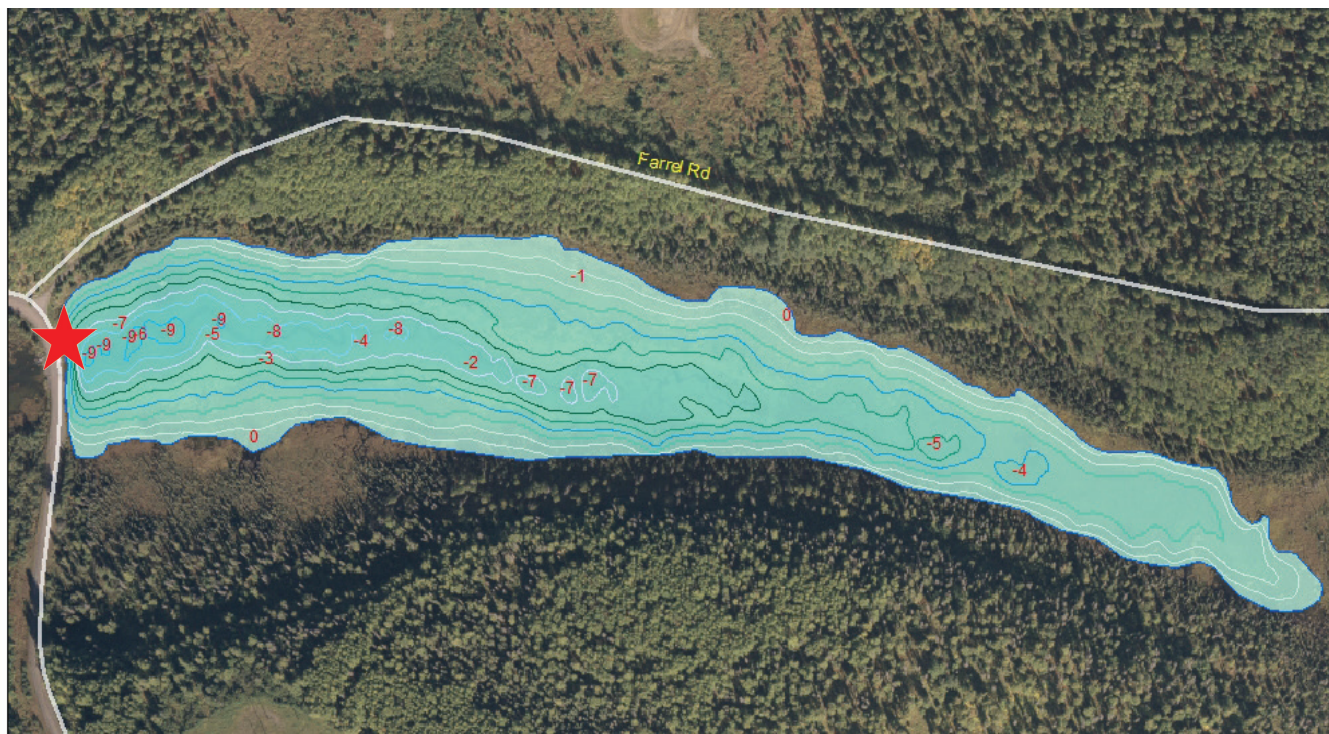
Species Stocked	# Stocking Events	Time of Year	Stocked As:
Rainbow Trout	1	Spring/Summer	Catchables
Chinook Salmon	1	Fall/Winter	Catchables

Catchables: In the range of 7 to 12 inches; determined to be of adequate size for sport anglers to harvest for a meal.

Sixmile Lake (Upper)

Sixmile Lake is located on Joint Base Elmendorf-Richardson north of Anchorage. Limited access- best to use a boat or canoe. Check for special regulations in July.

To fish lakes on the military base, you must have a military sponsor to get access, as well as an iSportsman pass issued by JBER and valid fishing license.



Access Information:

★ Public Access Point

1) From Boniface gate, drive straight onto Vandenberg Ave. for 0.7 mile. Turn right at stoplight to stay on Vandenberg Ave. and continue 1.9 miles. Turn right onto Talley Road (dirt road with sign "To Lakes"), and continue 1.2 miles to where the road separates Upper and Lower Sixmile lakes. Upper Sixmile Lake is on the right (East) and Lower Sixmile Lake is on the left (West). Parking is along roadway.

2) From Ft. Rich/Arctic Valley gate drive straight onto "D" Street and continue for 2.2 miles. Turn right onto Otter Lake Road, drive 2.3 miles onto the dirt road and turn left to stay on Otter Lake Road. Continue another 2.6 miles to the 4-way intersection (a good marker for this intersection is when looking right (North) at the intersection you will see a gate) and turn left onto Talley Road (dirt road). Drive 1.2 miles to the lake. Parking is along roadway-- Upper Sixmile Lake is on the left (East) and Lower Sixmile Lake is on the right (West).

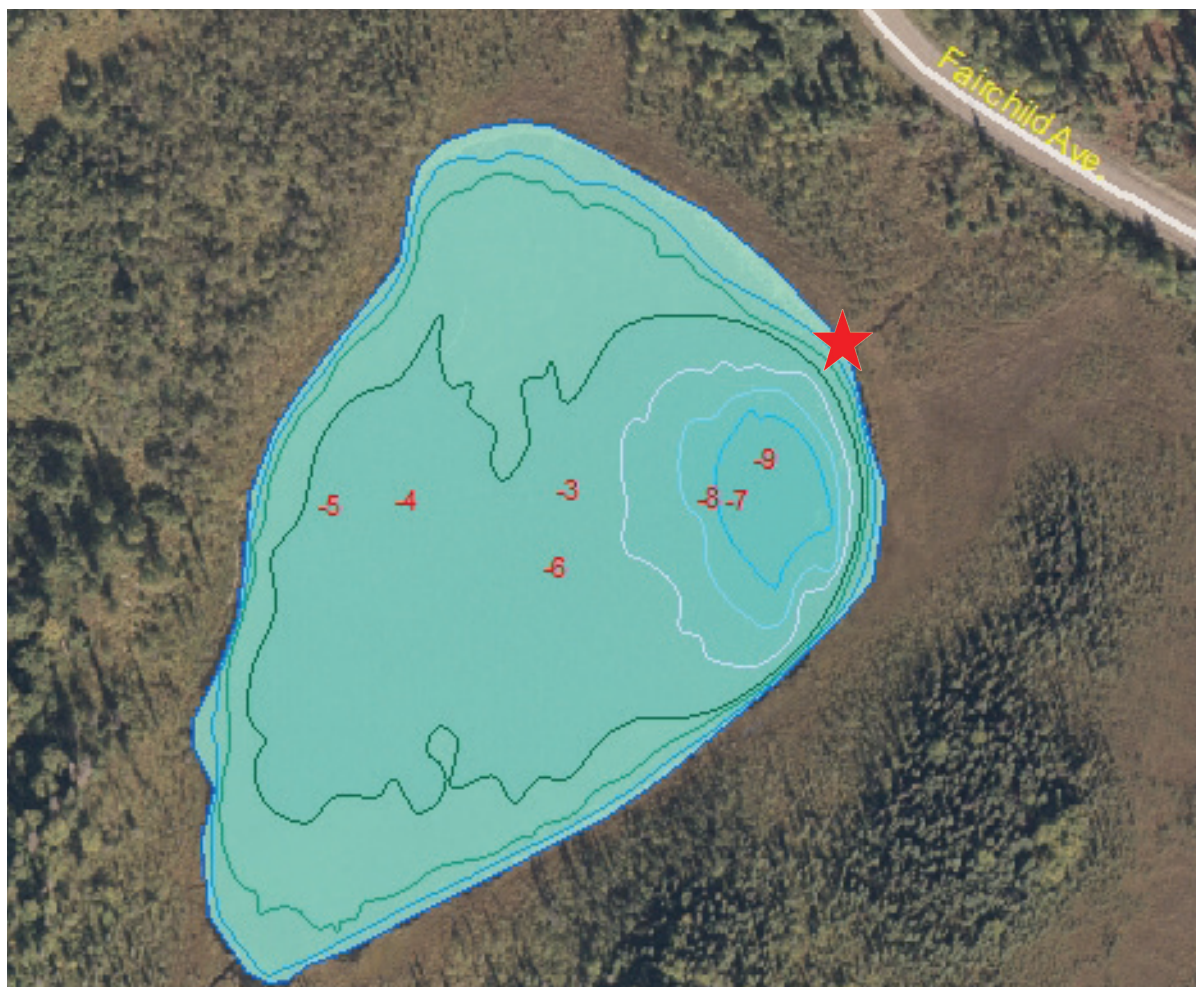
Species Stocked	# Stocking Events	Time of Year	Stocked As:
Rainbow Trout	1	Spring/Summer	Catchables

Catchables: In the range of 7 to 12 inches; determined to be of adequate size for sport anglers to harvest for a meal.

Spring Lake

Spring Lake is located on Joint Base Elmendorf-Richardson north of Anchorage.
Limited access. Use trails around the lake for shore fishing.

To fish lakes on the military base, you must have a military sponsor to get access, as well as an iSportsman pass issued by JBER and valid fishing license.



Access Information:

★ Public Access Point

Starting at Boniface gate, continue straight onto Vandenberg Ave. At 0.7 miles, continue straight at stoplight and Arctic Warrior Drive. Follow for 2.3 miles and turn right onto Fairchild Ave. Drive 1.5 miles, then turn left onto Airlifter Drive. Continue for 2.2 miles then veer left onto dirt road. Continue 0.4 miles to arrive at Spring Lake parking area. Follow foot trail to lake

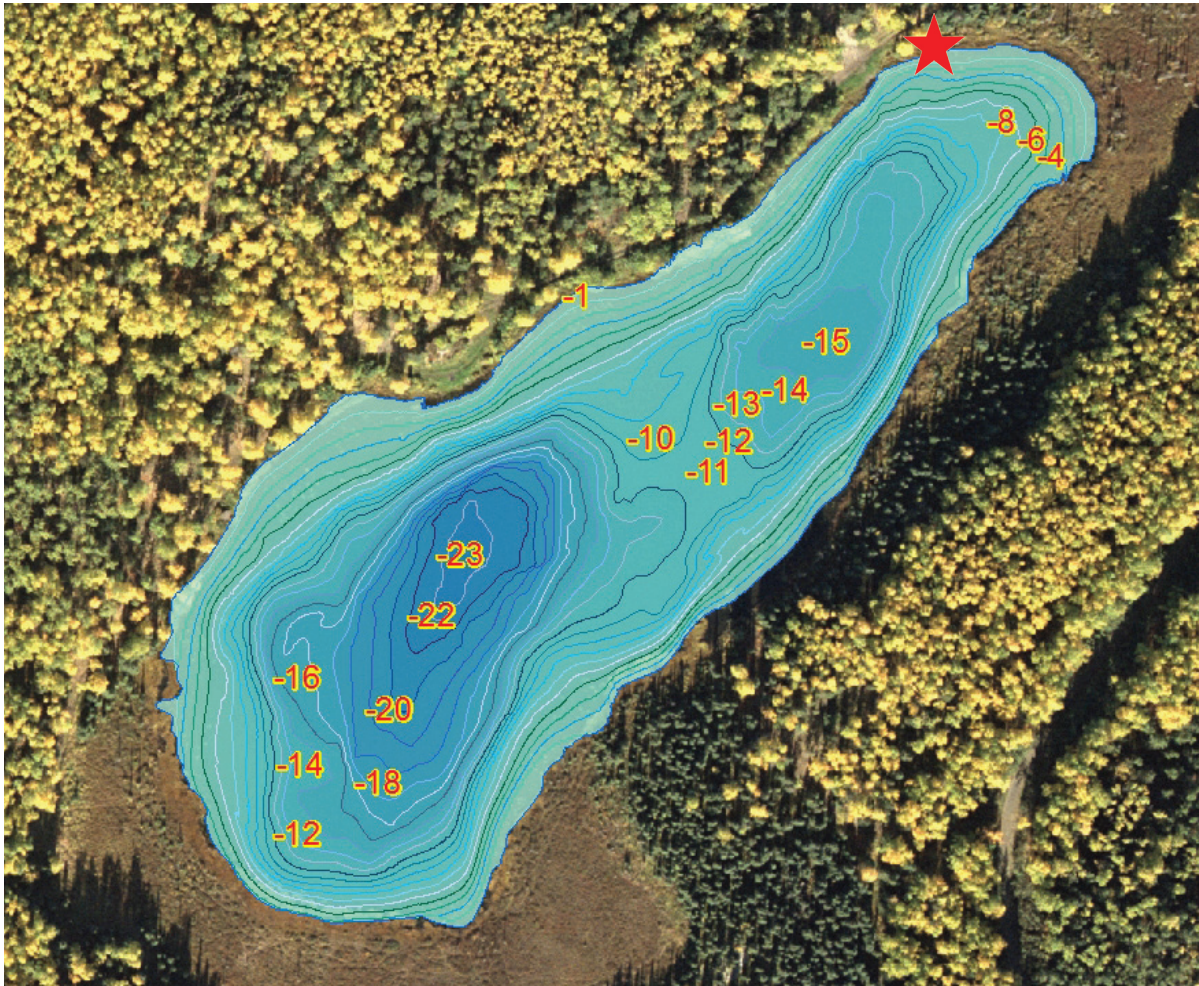
Species Stocked	# Stocking Events	Time of Year	Stocked As:
Rainbow Trout	1	Spring/Summer	Catchables

Catchables: In the range of 7 to 12 inches; determined to be of adequate size for sport anglers to harvest for a meal.

Thompson Lake

Thompson Lake is located on Joint Base Elmendorf-Richardson north of Anchorage. Limited access with no dock for casting. Use trails around the lake for shore fishing.

To fish lakes on the military base, you must have an iSportsman pass issued by JBER and valid fishing license.



Access Information:

★ Public Access Point

From Ft. Rich/Arctic Valley gate drive on "D" Street and then turn right on 6th Ave. Take a right turn onto Davis Hwy and continue 1.7 miles. Turn left onto Poleline Road (dirt road with large telephone poles running parallel to road) and follow 3.3 miles. Turn right on unmarked road, continue 0.6 miles and turn right at the "T" in road. Continue on road <0.1 mile to lake. **Bailey Bridge crossing Eagle River is 0.3 mile past the turn onto the unmarked road from Poleline Rd.**

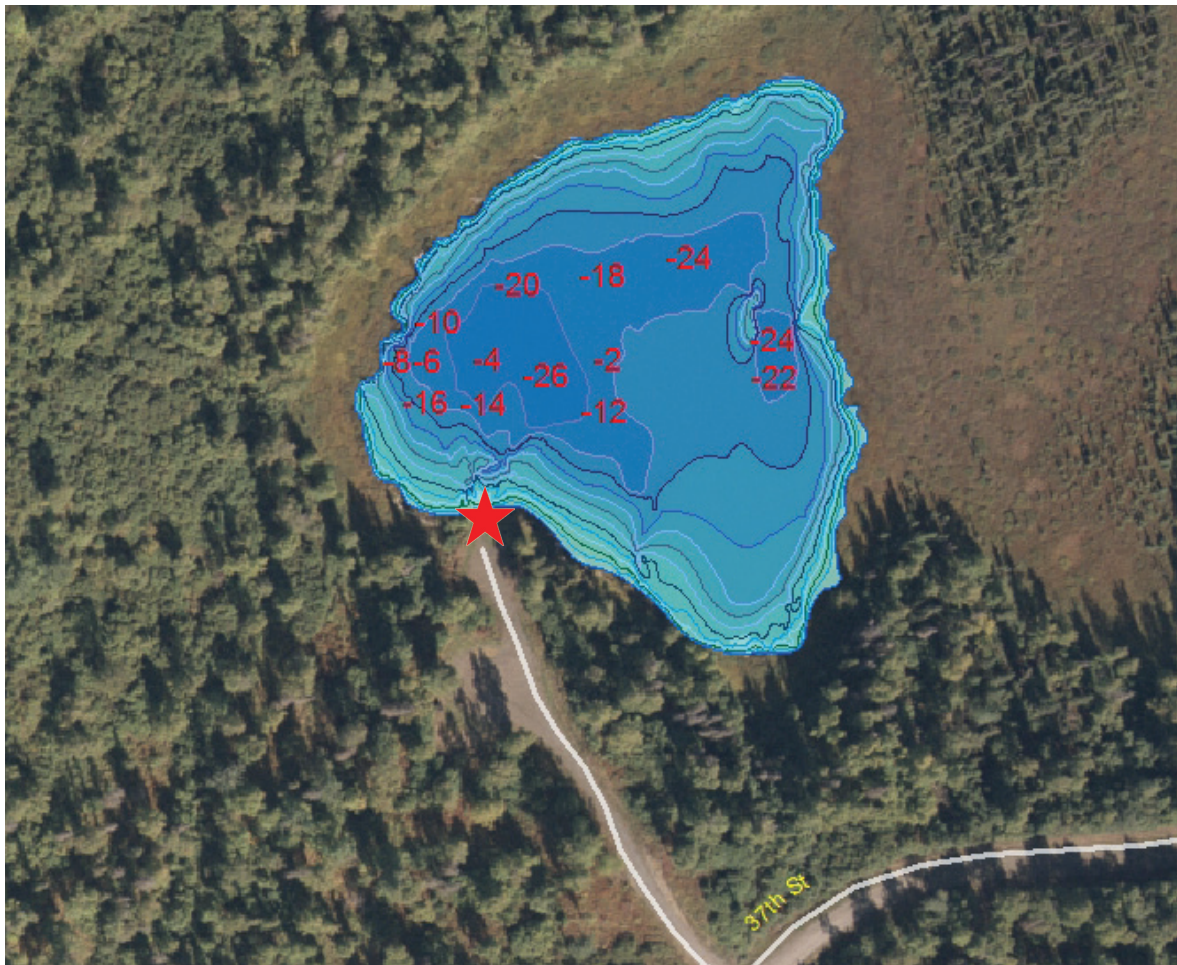
Species Stocked	# Stocking Events	Time of Year	Stocked As:
Rainbow Trout	1	Spring/Summer	Catchables

Catchables: In the range of 7 to 12 inches; determined to be of adequate size for sport anglers to harvest for a meal.

Triangle Lake

Triangle Lake is located on Joint Base Elmendorf-Richardson north of Anchorage.
Boat launch present for fishing from a boat.

To fish lakes on the military base, you must have a military sponsor to get access, as well as an iSportsman pass issued by JBER and valid fishing license.



Access Information:

★ Public Access Point

From the Boniface gate continue straight on Vandenberg Ave. for 0.7 mile. Turn right at stoplight and stay on Vandenberg Ave. for 1.9 mile then turn right onto Talley Road (dirt road with sign “To All Lakes”). Drive 0.2 miles and turn left onto Dena’ina Road (dirt road). Continue 0.9 mile then turn right (signage reads “Triangle Lake”) and drive up hill then descend towards lake at bottom of hill.

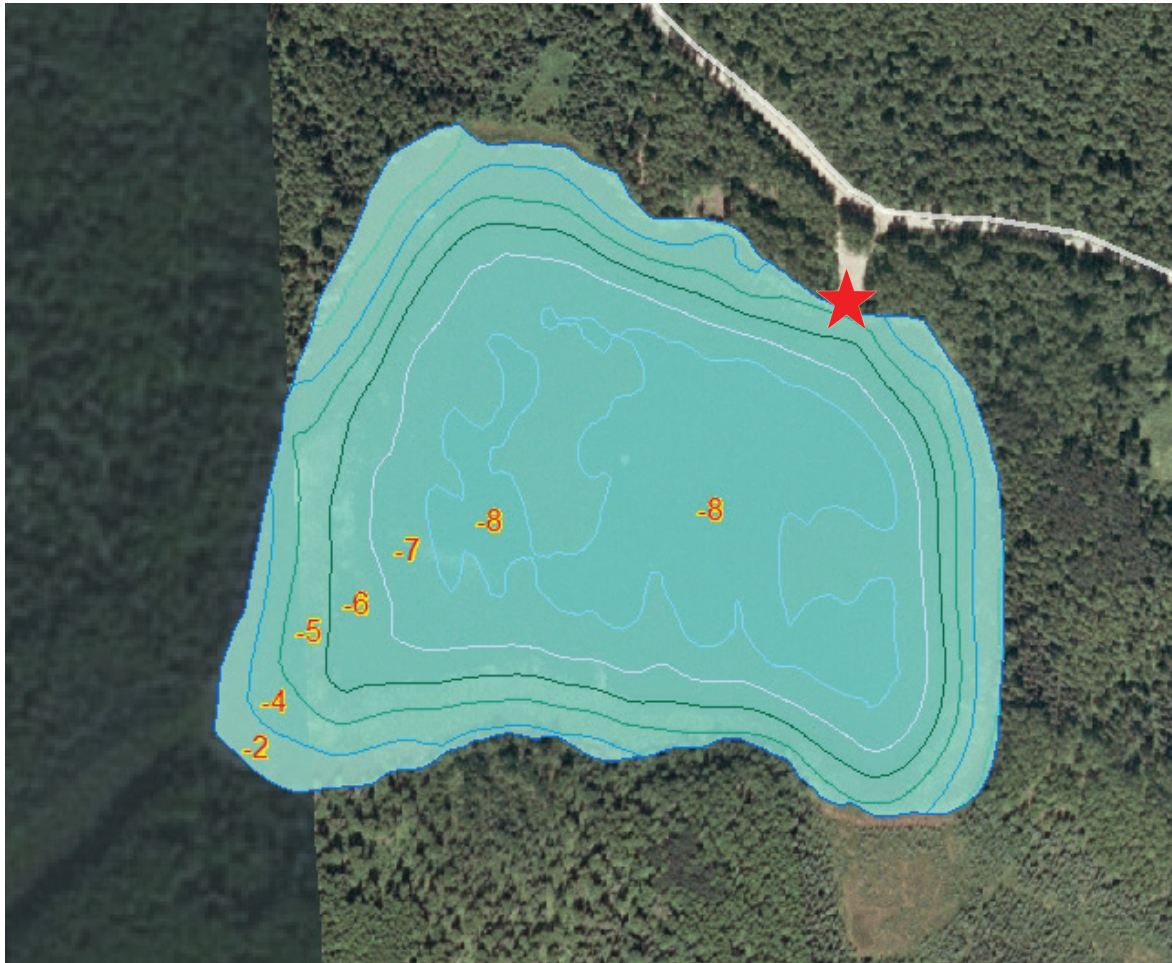
Species Stocked	# Stocking Events	Time of Year	Stocked As:
Rainbow Trout	1	Spring/Summer	Catchables

Catchables: In the range of 7 to 12 inches; determined to be of adequate size for sport anglers to harvest for a meal.

Waldon Lake

Waldon Lake is located on Joint Base Elmendorf-Richardson north of Anchorage.
Boat launch present for fishing from a boat.

To fish lakes on the military base, you must have an iSportsman pass issued by JBER and valid fishing license.



Access Information:

★ Public Access Point

From Ft. Rich/Arctic Valley gate drive straight on “D” Street 2.2 miles. Turn right onto Otter Lake Road and continue 2.3 miles on the dirt road. Continue straight where the road turns into Route Bravo for 4.5 miles. Turn right at the three-way intersection onto Artillery Road (there is a sign that reads “To All Lakes”). Follow road for 4.4 miles then turn left towards the lake (turn at sign that reads “Waldon Lake”).

Species Stocked	# Stocking Events	Time of Year	Stocked As:
Rainbow Trout	1	Spring/Summer	Catchables

Catchables: In the range of 7 to 12 inches; determined to be of adequate size for sport anglers to harvest for a meal.

Division of Sport Fish Getting Social



Getting Social



Follow us on
Instagram

@wefishak



Like us on
Facebook

ADF&G - Ship Creek Fisheries Center

ADF&G - wefishak

ADF&G - Sport Fishing Interior Alaska

ADF&G - Sport Fishing Southcentral Alaska

wefishak

Get out and Fish. Together.

#wefishak

Take a Guided Tour

.....

of the Ship Creek Fisheries Center

at the William Jack
Hernandez Sport
Fish Hatchery



Scheduled Public Tours May through August

(Tours are roughly 1 hour long and begin promptly at times listed below)

Tuesday: 11 a.m. and 2 p.m.
Thursday: 11 a.m. and 2 p.m.
Saturday: 11 a.m. and 2 p.m.

Private tours can be scheduled by contacting:

907-269-0427

For information about camping, accommodations, fishing guides, and other visitor services, contact the agencies listed in this publication, or the Alaska Travel Industry Association at 2600 Cordova Street, Suite 201, Anchorage, Alaska, 99503

web: www.travelalaska.com email: info@AlaskaTIA.org



Sport Fishing Series produced by:

Southcentral Region
Alaska Department of Fish and Game
Division of Sport Fish

333 Raspberry Road
Anchorage, Alaska 99518
Sport Fish Info. Center

(907) 267-2218
M-F 8am - 5 pm
Except on state & federal holidays

www.wefishak.alaska.gov