

Regional Operational Plan CF.1J.2021.03

**Operational Plan: Southeast Alaska Pink Salmon
Escapement Index Surveys, 2021–2023**

by

Andrew W. Piston

and

Steven C. Heintz

March 2021

Alaska Department of Fish and Game

Divisions of Sport Fish and Commercial Fisheries



Symbols and Abbreviations

The following symbols and abbreviations, and others approved for the Système International d'Unités (SI), are used without definition in the following reports by the Divisions of Sport Fish and of Commercial Fisheries: Fishery Manuscripts, Fishery Data Series Reports, Fishery Management Reports, and Special Publications. All others, including deviations from definitions listed below, are noted in the text at first mention, as well as in the titles or footnotes of tables, and in figure or figure captions.

Weights and measures (metric)		General		Mathematics, statistics	
centimeter	cm	Alaska Administrative Code	AAC	<i>all standard mathematical signs, symbols and abbreviations</i>	
deciliter	dL	all commonly accepted abbreviations	e.g., Mr., Mrs., AM, PM, etc.	alternate hypothesis	H_A
gram	g	all commonly accepted professional titles	e.g., Dr., Ph.D., R.N., etc.	base of natural logarithm	e
hectare	ha	at	@	catch per unit effort	CPUE
kilogram	kg	compass directions:		coefficient of variation	CV
kilometer	km	east	E	common test statistics	(F, t, χ^2 , etc.)
liter	L	north	N	confidence interval	CI
meter	m	south	S	correlation coefficient (multiple)	R
milliliter	mL	west	W	correlation coefficient (simple)	r
millimeter	mm	copyright	©	covariance	cov
		corporate suffixes:		degree (angular)	$^\circ$
Weights and measures (English)		Company	Co.	degrees of freedom	df
cubic feet per second	ft ³ /s	Corporation	Corp.	expected value	E
foot	ft	Incorporated	Inc.	greater than	>
gallon	gal	Limited	Ltd.	greater than or equal to	\geq
inch	in	District of Columbia	D.C.	harvest per unit effort	HPUE
mile	mi	et alii (and others)	et al.	less than	<
nautical mile	nmi	et cetera (and so forth)	etc.	less than or equal to	\leq
ounce	oz	exempli gratia (for example)	e.g.	logarithm (natural)	ln
pound	lb	Federal Information Code	FIC	logarithm (base 10)	log
quart	qt	id est (that is)	i.e.	logarithm (specify base)	log ₂ , etc.
yard	yd	latitude or longitude	lat. or long.	minute (angular)	'
		monetary symbols (U.S.)	\$, ¢	not significant	NS
Time and temperature		months (tables and figures): first three letters	Jan, ..., Dec	null hypothesis	H_0
day	d	registered trademark	®	percent	%
degrees Celsius	°C	trademark	™	probability	P
degrees Fahrenheit	°F	United States (adjective)	U.S.	probability of a type I error (rejection of the null hypothesis when true)	α
degrees kelvin	K	United States of America (noun)	USA	probability of a type II error (acceptance of the null hypothesis when false)	β
hour	h	U.S.C.	United States Code	second (angular)	"
minute	min	U.S. state	use two-letter abbreviations (e.g., AK, WA)	standard deviation	SD
second	s			standard error	SE
				variance	
Physics and chemistry				population sample	Var var
all atomic symbols					
alternating current	AC				
ampere	A				
calorie	cal				
direct current	DC				
hertz	Hz				
horsepower	hp				
hydrogen ion activity (negative log of)	pH				
parts per million	ppm				
parts per thousand	ppt, ‰				
volts	V				
watts	W				

REGIONAL OPERATIONAL PLAN CF.1J.2021.03

**SOUTHEAST ALASKA PINK SALMON ESCAPEMENT INDEX
SURVEYS, 2021–2023**

by

Andrew W. Piston and Steven C. Heint

Alaska Department of Fish and Game, Division of Commercial Fisheries, Ketchikan

Alaska Department of Fish and Game
Division of Commercial Fisheries

March 2021

The Regional Operational Plan Series was established in 2012 to archive and provide public access to operational plans for fisheries projects of the Divisions of Commercial Fisheries and Sport Fish, as per joint-divisional Operational Planning Policy. Documents in this series are planning documents that may contain raw data, preliminary data analyses and results, and describe operational aspects of fisheries projects that may not actually be implemented. All documents in this series are subject to a technical review process and receive varying degrees of regional, divisional, and biometric approval, but do not generally receive editorial review. Results from the implementation of the operational plan described in this series may be subsequently finalized and published in a different department reporting series or in the formal literature. Please contact the author if you have any questions regarding the information provided in this plan. Regional Operational Plans are available on the Internet at: <http://www.adfg.alaska.gov/sf/publications/>

Product names used in this publication are included for completeness and do not constitute product endorsement. The Alaska Department of Fish and Game does not endorse or recommend any specific company or their products.

*Andrew W. Piston and Steven C. Heintl,
Alaska Department of Fish and Game, Division of Commercial Fisheries,
2030 Sea Level Drive #205, Ketchikan, AK 99901, USA*

This document should be cited as follows:

Piston, A. W., and S. C. Heintl. 2021. Operational Plan: Southeast Alaska pink salmon escapement index surveys, 2021–2023. Alaska Department of Fish and Game, Division of Commercial Fisheries, Regional Operational Plan ROP.CF.1J.2021.03, Douglas.

The Alaska Department of Fish and Game (ADF&G) administers all programs and activities free from discrimination based on race, color, national origin, age, sex, religion, marital status, pregnancy, parenthood, or disability. The department administers all programs and activities in compliance with Title VI of the Civil Rights Act of 1964, Section 504 of the Rehabilitation Act of 1973, Title II of the Americans with Disabilities Act (ADA) of 1990, the Age Discrimination Act of 1975, and Title IX of the Education Amendments of 1972.

If you believe you have been discriminated against in any program, activity, or facility please write:

ADF&G ADA Coordinator, P.O. Box 115526, Juneau, AK 99811-5526

U.S. Fish and Wildlife Service, 4401 N. Fairfax Drive, MS 2042, Arlington, VA 22203

Office of Equal Opportunity, U.S. Department of the Interior, 1849 C Street NW MS 5230, Washington DC 20240

The department's ADA Coordinator can be reached via phone at the following numbers:

(VOICE) 907-465-6077, (Statewide Telecommunication Device for the Deaf) 1-800-478-3648,

(Juneau TDD) 907-465-3646, or (FAX) 907-465-6078

For information on alternative formats and questions on this publication, please contact:

ADF&G, Division of Sport Fish, Research and Technical Services, 333 Raspberry Rd, Anchorage AK 99518 (907) 267-2375

Signature Page

Project Title: Southeast Alaska Pink Salmon Escapement Index Surveys, 2021–2023

Project leader(s): *Andrew W. Piston*

Division, Region and Area: Division of Commercial Fisheries, Southeast Region

Project Nomenclature:

Period Covered: 2021–2023

Field Dates: 16 June through 15 October

Plan Type: Category I

Approval

Title	Name	Signature	Date
Project leader	Andrew W. Piston		3/12/2021
Research Coordinator	Steven C. Heintz		3/12/2021

TABLE OF CONTENTS

LIST OF FIGURES	ii
LIST OF APPENDICES	ii
PURPOSE.....	1
OBJECTIVES.....	1
BACKGROUND.....	1
STUDY AREA.....	2
Subregions	2
Management Areas.....	2
Stock Groups	2
METHODS.....	4
Conducting Aerial Surveys.....	4
Timing of Surveys	4
Coding Survey Counts and Designation of Peak Survey estimates.....	5
Imputing Missing Values.....	5
Data Review and Index Calculation	5
SCHEDULE AND DELIVERABLES	6
RESPONSIBILITIES	6
REFERENCES CITED	7
APPENDIX A: ADF&G SALMON MANAGEMENT AREA AND STOCK GROUP MAPS IN SOUTHEAST ALASKA.....	9
APPENDIX B: SOUTHEAST ALASKA PINK SALMON INDEX STREAMS.....	15

LIST OF FIGURES

Figure	Page
1. Locations of ADF&G pink salmon index streams and three major subregions in Southeast Alaska.....	3

LIST OF APPENDICES

Appendix	Page
A1. ADF&G salmon management areas in Southeast Alaska.	10
A2. Southern Southeast Subregion pink salmon escapement stock groups and index streams (black circles)—dotted areas indicate areas with no index streams or escapement targets.	11
A3. Northern Southeast Inside Subregion pink salmon escapement stock groups and index streams (black circles)—dotted areas indicate areas with no index streams or escapement targets.	12
A4. Northern Southeast Outside Subregion pink salmon escapement stock groups and index streams (black circles)—dotted areas indicate areas with no index streams or escapement targets.	13
B1. Southeast Alaska pink salmon index streams.....	16

PURPOSE

The primary purpose of this project is to provide estimates of relative pink salmon abundance for inseason management and to provide an annual index of pink salmon abundance for the region. Aerial surveys will be conducted by area management biologists and their assistants at 702 index streams throughout Southeast Alaska.

Key words: aerial survey, escapement index, *Oncorhynchus gorbuscha*, pink salmon, Southeast Alaska.

OBJECTIVES

1. Obtain peak aerial survey counts of pink salmon escapement at 702 index streams throughout Southeast Alaska.
2. For each stream surveyed, obtain counts for the mouth, the intertidal section, and the main stream.
3. Survey each index stream multiple times, as funding and staff time allows, to obtain a true peak count.
4. Designate peak counts in the ADF&G Region 1 Commercial Fisheries Database for each index stream.
5. Review and edit all survey data entered into the regional database and ensure that all surveys are correctly coded.
6. Impute a missing value for each index stream that does not have a suitable peak survey observation for a given year.
7. Conduct final review of index and calculate escapement indices on each of the designated spatial scales automatically from the regional database.

BACKGROUND

Wild pink salmon (*Oncorhynchus gorbuscha*) spawn in approximately 2,500 short, coastal streams in Southeast Alaska (Zadina et al. 2004) and support a large and valuable commercial fishing industry (Clark et al. 2006). Pink salmon stocks in Southeast Alaska are managed through extensive inseason monitoring of harvests, fishing effort, and developing escapements (Van Alen 2000; Zadina et al. 2004). Because pink salmon production in Southeast Alaska is broadly dispersed, inseason assessment of escapements has been based on aerial observation. Prior to making decisions about commercial fishery openings, experienced fishery managers fly over many miles of pink salmon spawning streams, adjacent estuaries, and nearby marine waters to assess whether adequate numbers of salmon are present, and whether the timing of the escapement is consistent with previous patterns. Although managers fly these surveys to assess inseason abundance and make management decisions, a numerical summary of their visual impressions about salmon abundance is retained as one of the most important indicators of salmon abundance and management success.

The peak annual aerial survey counts to a set of 702 streams in the region are used to generate an annual escapement measure, or “index” of abundance, upon which pink salmon escapement goals are based. Survey data are coded to reflect survey quality and timing status, and thoroughly reviewed by management and research staff. Annual calculation of the escapement index is then automated through the Region 1 Commercial Fisheries Database and made available to users on several spatial scales (e.g., district, stock group, subregion). The methods used to calculate the current pink salmon escapement indices for Southeast Alaska were described in detail by Heintz

and Piston (2009) and current escapement goals were described by Piston and Heintz (2011, 2014, 2018, and 2020).

STUDY AREA

Pink salmon index streams are widely dispersed throughout Southeast Alaska, from Portland Canal near the Canadian border in the south, to Lynn Canal, near Juneau, in the north—a distance of approximately 600 km (Figure 1). Southeast Alaska pink salmon harvest statistics and escapement indices have commonly been partitioned into spatial areas that reflect fisheries management divisions (management areas, districts, and stock groups) as well as biological divisions (subregions; Appendix A and B).

SUBREGIONS

Southeast Alaska pink salmon are harvested primarily in mixed stock fisheries, often some distance from spawning areas; therefore, it is not possible to allocate harvests of pink salmon to stock group of origin at any finer scale than subregion (Figure 1). Marine tagging studies have repeatedly demonstrated that Southeast Alaska pink salmon stocks are strongly segregated into southern and northern areas or subregions (e.g., Rich 1927, Rich and Suomela 1929, Rich and Morton 1930, Nakatani et al. 1975, Hoffman 1983), and the commercial fisheries in each subregion generally target pink salmon stocks that ultimately spawn in that subregion. Therefore, biological escapement goals for Southeast Alaska pink salmon have been established at the subregion level (Zadina et al. 2004).

The Southern Southeast Subregion (SSE) includes 366 index streams on the inner islands and mainland of southern Southeast Alaska, from Sumner Strait south to Dixon entrance (Districts 1–8; Figure 1; Appendix A). The Northern Southeast Inside Subregion (NSEI) includes 295 index streams on the inside waters of northern Southeast Alaska north of Sumner Strait (Districts 8–12, 14, and District 13 subdistricts 51 to 59; Figure 1; Appendix A). The Northern Southeast Outside Subregion (NSEO) includes 41 index streams on the outside waters of Chichagof and Baranof Islands in northern Southeast Alaska (District 13, excluding Peril Straits and Hoonah Sound Subdistricts 51 to 59; Figure 1; Appendix A).

MANAGEMENT AREAS

There are four management areas in Southeast Alaska (Juneau, Ketchikan, Petersburg, and Sitka; Appendix A), which are further divided into 15 management districts (Districts 1–15). ADF&G Fisheries managers in Southeast Alaska are responsible for managing the fisheries and monitoring escapements of pink salmon in each of the districts, or portions of the districts, within their respective management areas. The subregional escapement goals were divided into “management targets” for the 12 management districts where pink salmon abundance is monitored to aid in assessing the spatial distribution of the pink salmon escapement across Southeast Alaska (Zadina et al. 2004; Heintz et al. 2008; Piston and Heintz 2011).

STOCK GROUPS

Southeast Alaska has also been divided into 53 smaller “stock groups” contained within the district boundaries (Zadina et al. 2004; Appendix A and B). Each stock group is a collection of streams that support pink salmon runs that share similar migration routes and run timing, are managed as a unit, and are assumed to share similar productivity and exploitation rates (Van Alen 2000). Pink

salmon abundance in seven of these stock groups has not been monitored. The Annette Island stock group is managed exclusively by the Metlakatla Indian Community, and the state has no jurisdiction in that area. Six other stock groups are located in areas where directed fisheries do not occur or are in remote areas where it would be cost prohibitive to conduct surveys on a regular basis: Suemez-Dall (Ketchikan area), SW Baranof, W Kruzof, and W Yakobi (Sitka area), and Dundas Bay and Glacier Bay (Juneau area). The remaining 46 stock groups, representing 12 districts, are actively managed and monitored for escapements. Management targets for districts and stock groups are not considered to be escapement goals under the definition provided in the *Policy for Statewide Salmon Escapement Goals* (5 AAC 39.223), but these targets act as an informal benchmark that can be used to assess the consistency of the distribution of the escapement within administrative boundaries.

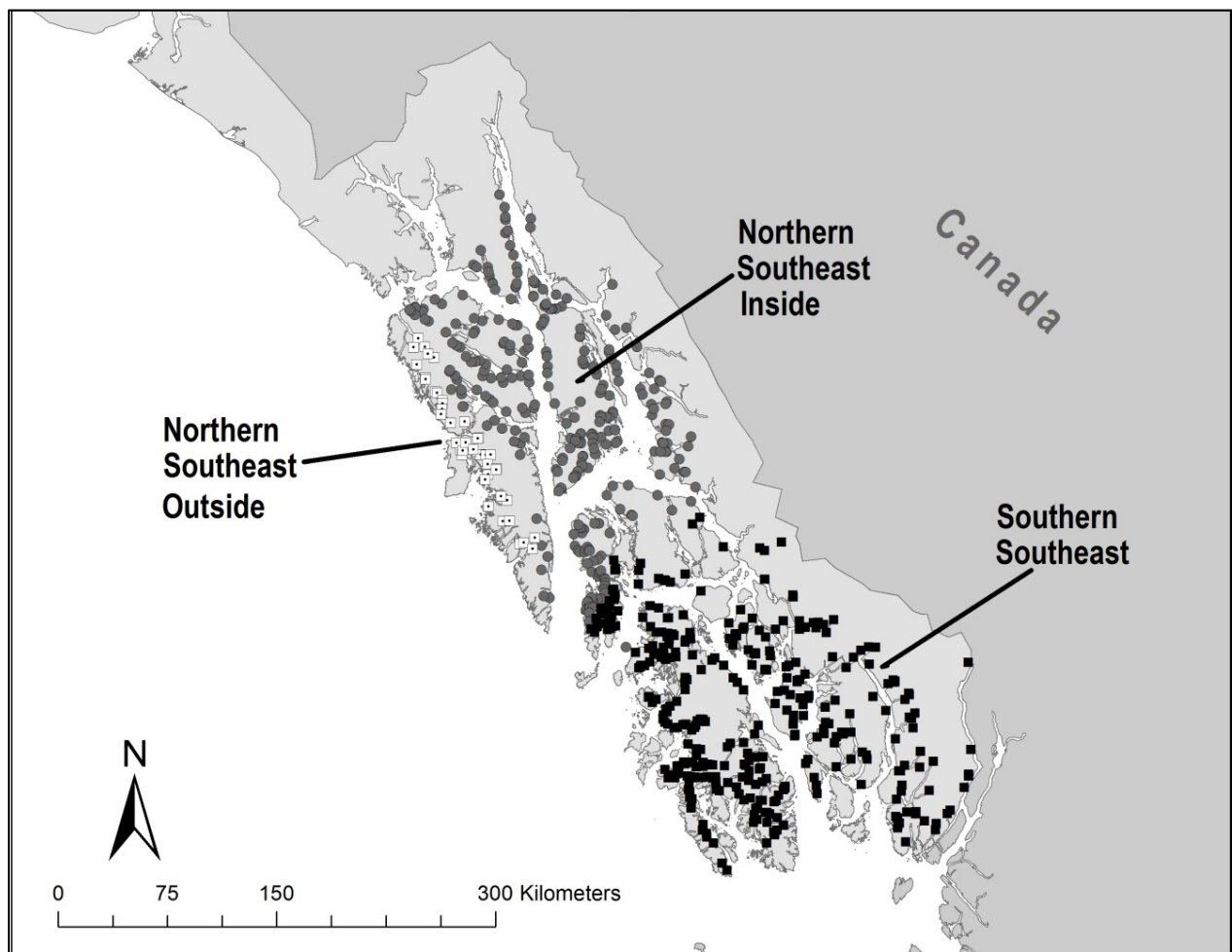


Figure 1.—Locations of ADF&G pink salmon index streams and three major subregions in Southeast Alaska.

METHODS

CONDUCTING AERIAL SURVEYS

Aerial surveys will be conducted primarily in Piper Super Cub aircraft, which allow surveyors to fly at lower altitudes and slower speeds than other fixed-wing aircraft. When not available, a Cessna 185 or 206 aircraft may be used as needed. Surveys will be flown at altitudes of 100 to 200 meters and speeds of approximately 90 km/hour for surveys conducted in a Piper Super Cub and approximately 110 km/hour for surveys conducted in a Cessna 185. Observers will wear polarized glasses to reduce glare off the water and optimize visibility while conducting surveys. Survey counts will be recorded on standardized escapement survey forms, along with survey conditions (visibility, water levels, weather, and tide stage) and other pertinent observations.

Fish counts for each stream survey will be divided into four categories: mouth, intertidal, stream live, and stream dead. Mouth counts normally consist of fish in saltwater that are in close proximity to the stream being surveyed, intertidal counts include fish in the area from low tide to the approximate high tide mark, and stream live counts normally include all fish above the high tide mark. Observers will determine what constitutes a mouth count or intertidal count based on their own experience at each index stream. The distinction between mouth and intertidal counts may not always be clear when the tide has partially or completely covered the intertidal area, and because schools of fish can move in and out of the stream with the tide. In addition, fish may congregate in the mouth of a stream and ultimately spawn in another stream, particularly where streams are in close proximity or where smaller streams are located within the vicinity of larger streams (Jones and Thomason 1984; Maselko et al. 2003). In cases where this is suspected, observers should add comments when entering data into the regional database and consider this information when coding surveys. Survey data will be entered into regional database as time and staff availability allows during the season.

TIMING OF SURVEYS

Pink salmon populations in Southeast Alaska can generally be divided into early, middle, and late runs—the earliest spawning occurs along the length of the mainland and on the inner islands of northern Southeast Alaska, and the latest spawning typically occurs along the islands of the outer coast (Alexandersdottir 1987). Variation occurs within specific stock groups depending on the water source of individual streams; for example, spawning is typically later in warmer lake-fed systems than in colder glacially-fed rivers (Alexandersdottir 1987). Pink salmon surveys can begin as early as late June or early July for some early run systems along the mainland and islands in northern Southeast Alaska, and surveys may last into late September or early October for systems on the outer islands of southern Southeast Alaska.

Ideally, stream surveys should be conducted until the peak of abundance has passed to ensure that peak survey counts represent a true peak in abundance and not just a cessation of surveys once an adequate number of fish are determined to be present. Capturing the peak of abundance will ensure that escapement indices, and the escapement goals created with index counts, accurately reflect trends in pink salmon abundance. In some locations, it may only be possible to conduct one round of surveys due to budget constraints and staff-time limitations, in which case every effort should be made to ensure those surveys line up with historical peak run timing.

CODING SURVEY COUNTS AND DESIGNATION OF PEAK SURVEY ESTIMATES

Survey data entered into the regional database will be qualified based on visibility, timing, and area surveyed by the management biologists who conducted the surveys through the designation of “usage codes.” All surveys must be given a usage code so that the quality of each survey is identified for future users of the survey data. In addition, the annual peak survey for each index stream must be designated in the database for the pink salmon index to be calculated automatically out of database. Usage Code 01 indicates a survey that is not useful for indexing abundance or comparing to other surveys of the same stream; surveys that take place when conditions are poor for counting, or which only cover a small portion of the stream or survey area (i.e., do not include all the fish known to be present), or which are in some other way not useful for comparing to other counts. Usage Code 02 indicates a survey that is comparable to other surveys of the same stream and is potentially useful for indexing abundance; surveys that take place under normal conditions and represent a good complete count. Usage Code 03 is used to designate a single survey for each stream as the one and only peak or maximum survey count for the year. It is very important that only one survey for each stream in a given year is designated with a code 03. In the event that no survey in a given year is deemed a good peak count, surveys for that stream will be coded 02 or 01 and a peak survey count will be imputed (see below).

After all survey data are entered into the regional database and coding is complete, the entire data set will be reviewed by research biologists to ensure that each index stream has only one survey coded as the peak count and that the selection of peak surveys for each stream makes sense in terms of run timing. Any errors or recommended code changes will be reviewed in consultation with the management biologists familiar with the surveys or the area prior to making any modifications to the database.

IMPUTING MISSING VALUES

For several reasons, it is not possible to designate a peak survey for every index stream in every year. In some cases, a stream will not be surveyed during the peak of the run, or a survey during the peak of the run may not be useful due to weather or because it was an incomplete survey—or the stream was simply not surveyed at all. If a particular index stream is not assigned a peak escapement count for a given year, a value will be imputed from existing data. It will be assumed that the expected count for a given stream in a given year was equal to the sum of all counts for that stream, times the sum of all the counts in a given year for all the streams in the unit of interest, divided by the sum of all counts over all years for all the streams in the unit of interest (stock group). Data will be arranged in a matrix, and the missing value will be calculated as the row total times the column total divided by the grand total. An iterative EM algorithm (McLachlan and Krishnan 1997) will be used to calculate missing values, because there is typically more than one missing value for each unit of interest, and the sums change as missing values are filled in at each iteration. This method is based on an assumed multiplicative relation between yearly count and unit count, with no interaction. Imputed values are identified in the regional database by the Usage Code 05. Once missing values are imputed, the pink salmon index is fixed in the database and the index numbers will not change in subsequent years.

DATA REVIEW AND INDEX CALCULATION

Once data entry is completed and reviewed, research biologists will manually calculate all index values for subregions, districts, and stock groups and then inform the programmer responsible for

running the EM algorithm procedure that the indices can be automatically calculated in the database. Once the indices are calculated in the regional database, researchers will double check their spreadsheets against the final results in the database as added insurance that all pink salmon index calculations are correct.

SCHEDULE AND DELIVERABLES

Aerial surveys will be conducted from late June through late September. Coding surveys, editing data, and automating indices in the regional database will take place in late September and October. Information derived from this project will be used in a stock status report on pink salmon in the form of an ADF&G Special Publication that will be produced at 3-year intervals preceding Alaska Board of Fisheries meetings.

RESPONSIBILITIES

All Southeast Alaska Area Management Biologists and their assistants will be responsible for conducting aerial surveys throughout the summer, reviewing and entering data into the regional database, and coding surveys after data entry is complete.

Andrew W. Piston, Fishery Biologist IV, will review all data entry and compile pink salmon escapement indices at the end of the season. He will also act as lead author on pink salmon stock status reports that will be produced prior to each Alaska Board of Fisheries meeting.

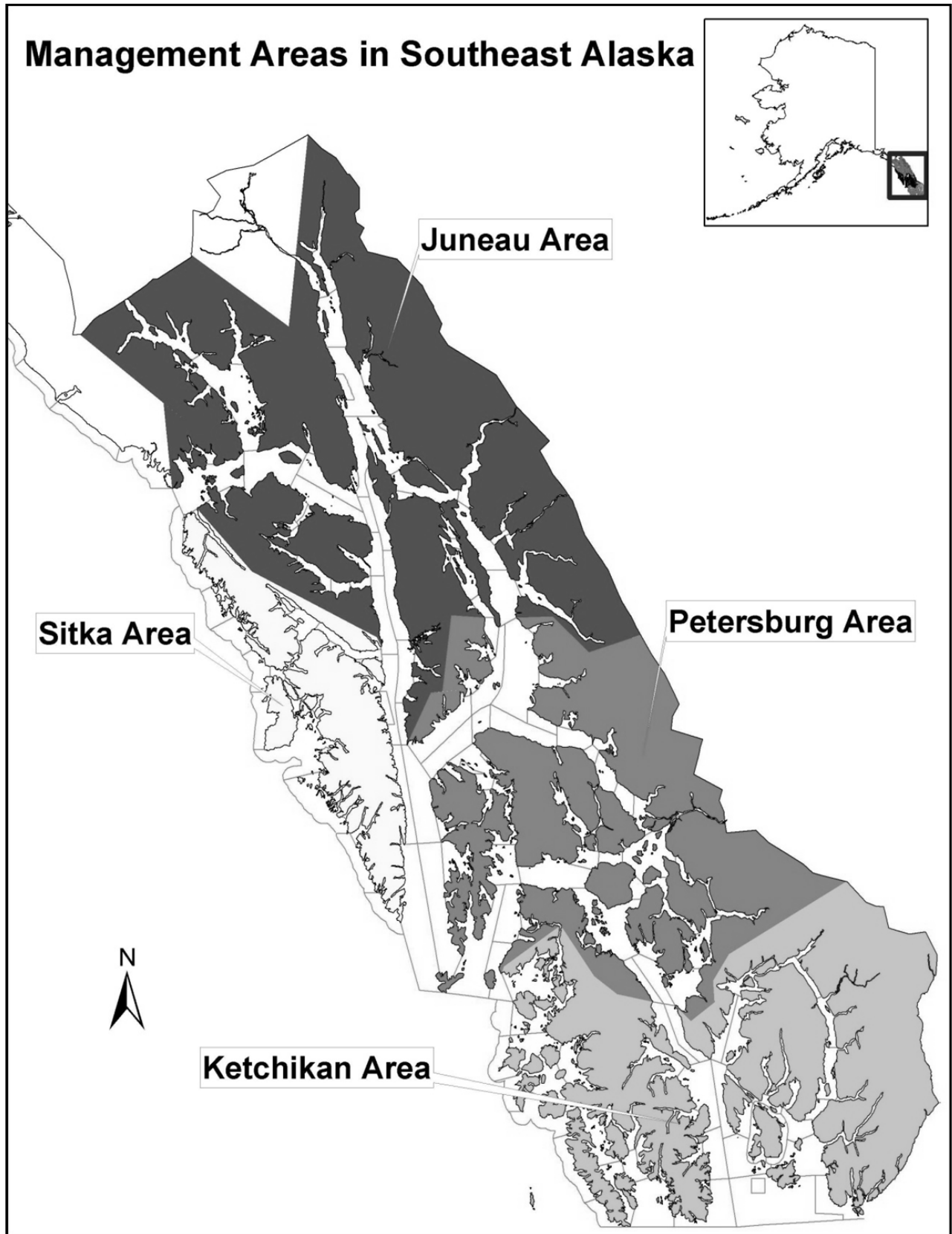
Steven C. Heinl, Regional Research Coordinator, will assist with project operational planning and will coauthor the pink salmon stock status report.

Justin Daily, Analyst/Programmer IV, will facilitate the automation of pink salmon indices in the regional database once all data are entered and reviewed.

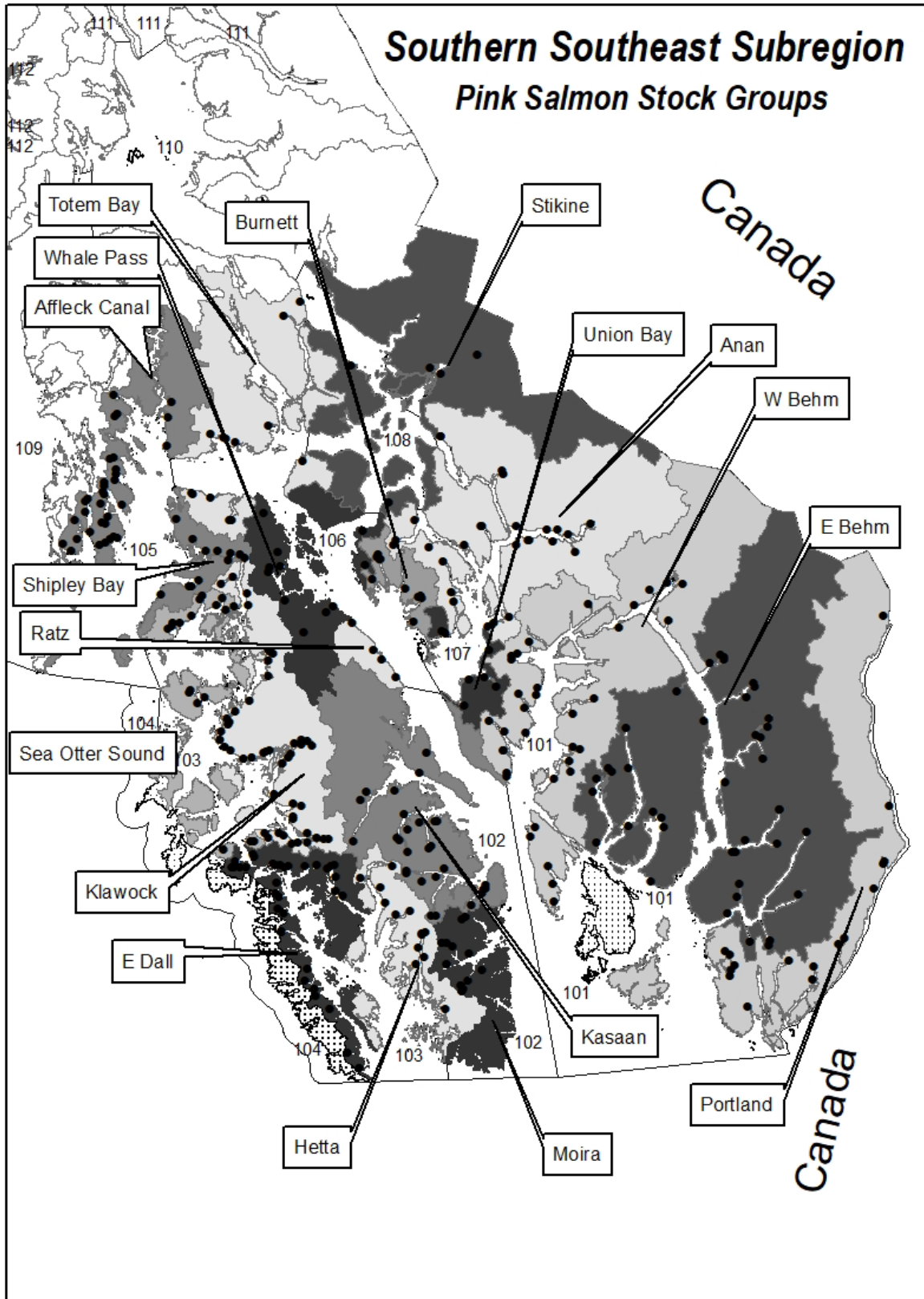
REFERENCES CITED

- Alexandersdottir, M. 1987. Life history of pink salmon (*Oncorhynchus gorbuscha*) in Southeast Alaska and implications for management. Doctoral dissertation, University of Washington, Seattle.
- Clark, J. H., A. McGregor, R. D. Mecum, P. Krasnowski, and A. M. Carroll. 2006. The commercial salmon fishery in Alaska. Alaska Fishery Research Bulletin 12:1–146.
- Heinl, S. C., and A. W. Piston. 2009. Standardizing and automating the Southeast Alaska pink salmon escapement index. Alaska Department of Fish and Game, Division of Commercial Fisheries, Regional Information Report No. 1J09-06, Douglas.
- Heinl, S. C., D. M. Eggers, and A. W. Piston. 2008. Pink salmon stock status and escapement goals in Southeast Alaska and Yakutat. Alaska Department of Fish and Game, Special Publication No. 08–16, Anchorage.
- Hoffman, S. H. 1983. Southern Southeastern Alaska pink salmon (*Oncorhynchus gorbuscha*) tagging investigations, 1981. Alaska Department of Fish and Game, Division of Commercial Fisheries, Technical Data Report No. 92, Juneau.
- Jones, J. D., and G. Thomason. 1984. U.S./Canada salmon stock interception research, southern Southeast Alaska pink salmon (*Oncorhynchus gorbuscha*) tagging study, 1982. Alaska Department of Fish and Game, Division of Commercial Fisheries, Informational Leaflet No. 231, Juneau.
- Maselko, J. M., A. C. Wertheimer, and J. F. Thedinga. 2003. Selection and application of a mark-and-recapture technique for estimating pink salmon escapements. U.S. Department of Commerce, NOAA Technical Memorandum NMFS-AFSC-137. Alaska Fisheries Science Center, Seattle.
- McLachlan, G. J., and T. Krishnan. 1997. The EM algorithm and extensions. John Wiley and Sons, New York.
- Nakatani, R. E., G. J. Paulik, and R. Van Cleve. 1975. Pink salmon (*Oncorhynchus gorbuscha*) tagging experiments in S. E. Alaska, 1938–1942 and 1945. National Oceanic and Atmospheric Administration, National Marine Fisheries Service, Special Scientific Report, Fisheries Series 686, Seattle.
- Piston, A. W., and S. C. Heinl. 2011. Pink salmon stock status and escapement goals in Southeast Alaska. Alaska Department of Fish and Game, Special Publication No.11-18, Anchorage.
- Piston, A. W., and S. C. Heinl. 2014. Pink salmon stock status and escapement goals in Southeast Alaska. Alaska Department of Fish and Game, Special Publication No.14-14, Anchorage.
- Piston, A. W., and S. C. Heinl. 2018. Pink salmon stock status and escapement goals in Southeast Alaska. Alaska Department of Fish and Game, Special Publication No. 18-14, Anchorage.
- Piston, A. W., and S. C. Heinl. 2020. Pink salmon stock status and escapement goals in Southeast Alaska through 2019. Alaska Department of Fish and Game, Special Publication No. 20-09, Anchorage.
- Rich, W. H. 1927. Salmon-tagging experiments in Alaska, 1924 and 1925. Bulletin of the United States Bureau of Fisheries 42:109–146.
- Rich, W. H., and F. G. Morton. 1930. Salmon-tagging experiments in Alaska, 1927 and 1928. Bulletin of the United States Bureau of Fisheries 45:1–23.
- Rich, W. H., and A. J. Suomela. 1929. Salmon-tagging experiments in Alaska, 1926. Bulletin of the United States Bureau of Fisheries 43(2):71–104.
- Van Alen, B. W. 2000. Status and stewardship of salmon stocks in Southeast Alaska. Pages 161–194 [in] E. E. Knudsen, C.R. Steward, D. D. McDonald, J. E. Williams, D. W. Reiser, editors. Sustainable Fisheries Management: Pacific Salmon. CRC Press, Boca Raton.
- Zadina, T. P., S. C. Heinl, A. J. McGregor, and H. J. Geiger. 2004. Pink salmon stock status and escapement goals in Southeast Alaska and Yakutat [in] H. J. Geiger and S. McPherson, editors. Stock status and escapement goals for salmon stocks in Southeast Alaska. Alaska Department of Fish and Game, Special Publication No. 04-02, Anchorage.

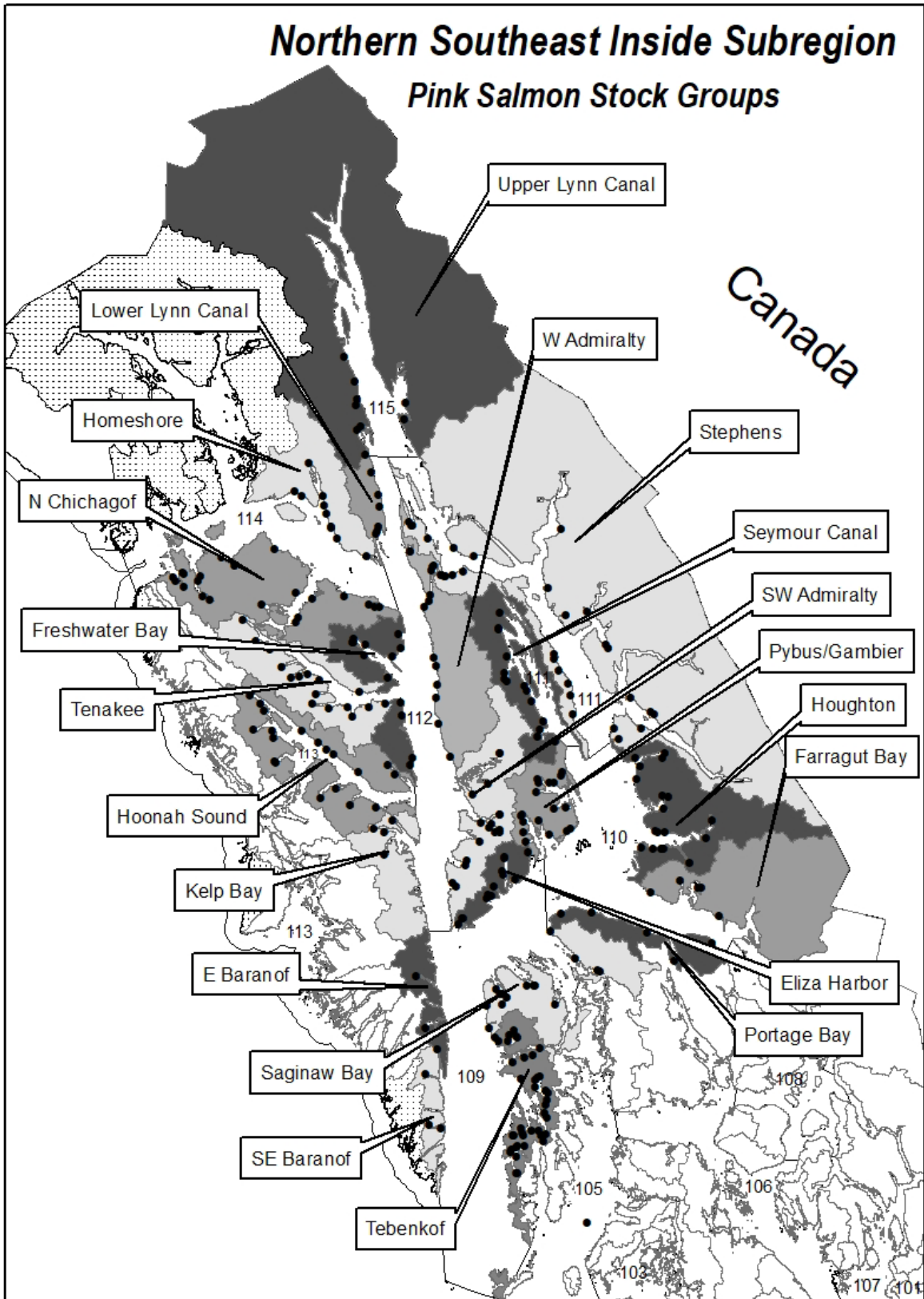
**APPENDIX A:
ADF&G SALMON MANAGEMENT AREA AND STOCK
GROUP MAPS IN SOUTHEAST ALASKA**



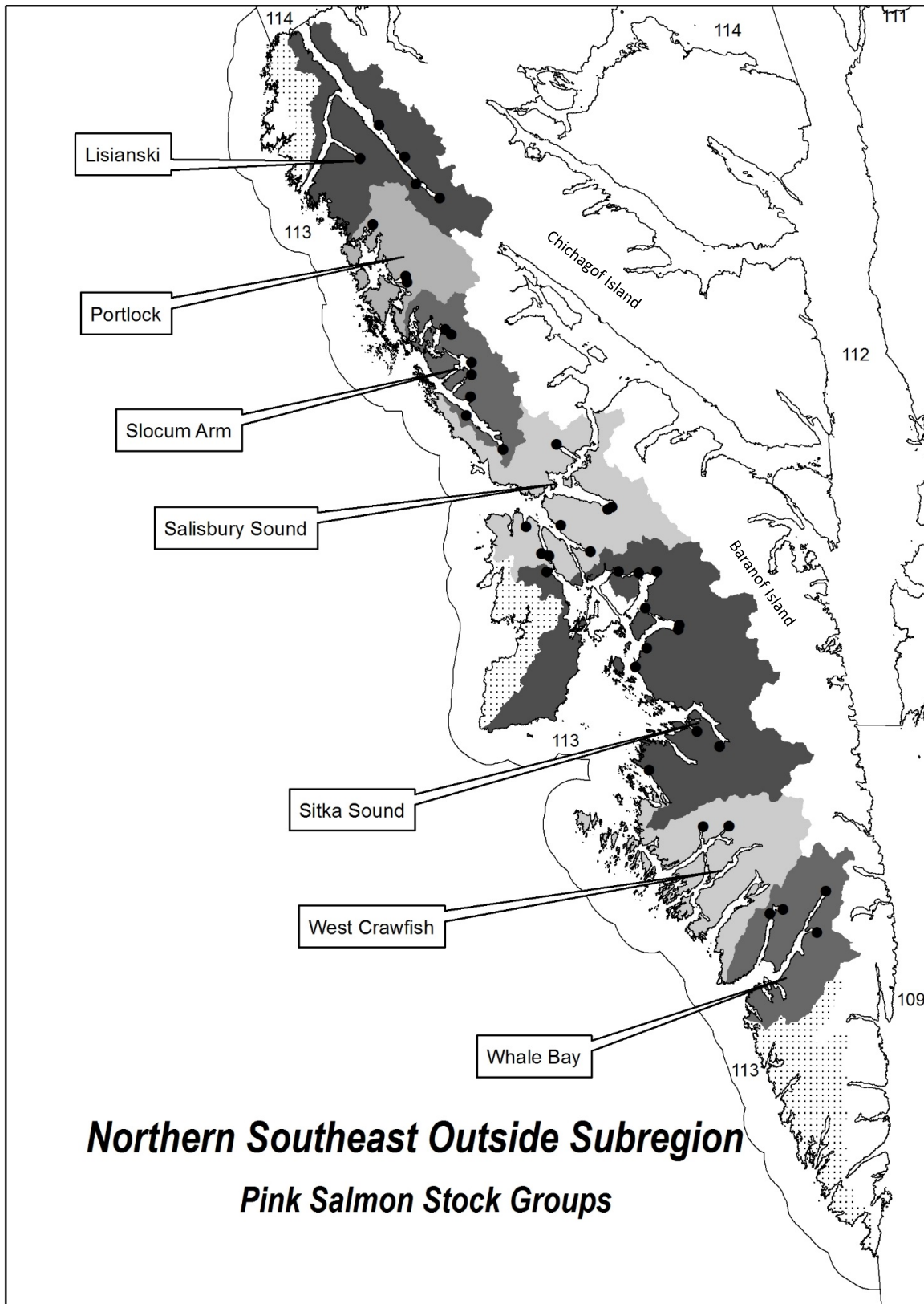
Appendix A2.—Southern Southeast Subregion pink salmon escapement stock groups and index streams (black circles)—dotted areas indicate areas with no index streams or escapement targets.



Appendix A3.—Northern Southeast Inside Subregion pink salmon escapement stock groups and index streams (black circles)—dotted areas indicate areas with no index streams or escapement targets.



Appendix A4.—Northern Southeast Outside Subregion pink salmon escapement stock groups and index streams (black circles)—dotted areas indicate areas with no index streams or escapement targets.



**APPENDIX B:
SOUTHEAST ALASKA PINK SALMON INDEX STREAMS**

Appendix B1.—Southeast Alaska pink salmon index streams.

STOCK	DISTRICT	SUBDISTRICT	STREAM CODE	STREAM	AREA OFFICE	SUBREGION
Portland Pink	101	11	14	Harry Bay	Ketchikan	Southern Southeast
Portland Pink	101	11	65	Willard Creek	Ketchikan	Southern Southeast
Portland Pink	101	11	78	Fillmore Inlet NW Hd	Ketchikan	Southern Southeast
Portland Pink	101	11	79	Fillmore Creek	Ketchikan	Southern Southeast
Portland Pink	101	11	100	Swift Creek	Ketchikan	Southern Southeast
Portland Pink	101	11	101	Hidden Inlet	Ketchikan	Southern Southeast
Portland Pink	101	15	8	Sandfly Creek	Ketchikan	Southern Southeast
Portland Pink	101	15	11	Star Creek	Ketchikan	Southern Southeast
Portland Pink	101	15	14	Halibut Bay N Head	Ketchikan	Southern Southeast
Portland Pink	101	15	19	Tombstone River	Ketchikan	Southern Southeast
Portland Pink	101	15	85	Fish Creek-Hyder	Ketchikan	Southern Southeast
Portland Pink	101	23	19	Very Inlet N Head	Ketchikan	Southern Southeast
Portland Pink	101	23	23	Very Inlet E Head	Ketchikan	Southern Southeast
Portland Pink	101	23	27	Very Inlet SE Head	Ketchikan	Southern Southeast
Portland Pink	101	23	32	Very Inlet	Ketchikan	Southern Southeast
Portland Pink	101	23	34	Very Inlet	Ketchikan	Southern Southeast
W Behm Pink	101	27	19	Dall Head Creek	Ketchikan	Southern Southeast
W Behm Pink	101	27	26	Bostwick Bay SW Side	Ketchikan	Southern Southeast
W Behm Pink	101	27	36	Bostwick Creek	Ketchikan	Southern Southeast
W Behm Pink	101	29	6	Vallenar Creek	Ketchikan	Southern Southeast
W Behm Pink	101	29	11	Grant Creek	Ketchikan	Southern Southeast
E Behm Pink	101	30	5	Quadra Creek	Ketchikan	Southern Southeast
E Behm Pink	101	30	9	Weasel Cove Head	Ketchikan	Southern Southeast
E Behm Pink	101	30	12	Badger Bay Head	Ketchikan	Southern Southeast
E Behm Pink	101	30	30	Keta River	Ketchikan	Southern Southeast
E Behm Pink	101	30	60	Marten River	Ketchikan	Southern Southeast
E Behm Pink	101	30	83	Humpback Creek	Ketchikan	Southern Southeast
E Behm Pink	101	30	89	Mink Creek	Ketchikan	Southern Southeast
E Behm Pink	101	30	95	Vixen Bay Head	Ketchikan	Southern Southeast
E Behm Pink	101	41	25	Lucky Cove	Ketchikan	Southern Southeast
E Behm Pink	101	43	29	Pop Creek	Ketchikan	Southern Southeast
E Behm Pink	101	43	33	Fish Creek Thorne A	Ketchikan	Southern Southeast
E Behm Pink	101	43	41	Sea Level Creek	Ketchikan	Southern Southeast
E Behm Pink	101	45	7	Herring Cove	Ketchikan	Southern Southeast

-continued-

STOCK	DISTRICT	SUBDISTRICT	STREAM CODE	STREAM	AREA OFFICE	SUBREGION
E Behm Pink	101	45	24	White River	Ketchikan	Southern Southeast
E Behm Pink	101	45	32	Leask Creek	Ketchikan	Southern Southeast
E Behm Pink	101	45	38	Salt Chuck George In	Ketchikan	Southern Southeast
E Behm Pink	101	45	42	Salt Lagoon Right	Ketchikan	Southern Southeast
E Behm Pink	101	45	75	Nigelius Creek	Ketchikan	Southern Southeast
E Behm Pink	101	45	78	Carroll Creek	Ketchikan	Southern Southeast
E Behm Pink	101	45	94	Spit Creek	Ketchikan	Southern Southeast
E Behm Pink	101	51	6	Checats Creek	Ketchikan	Southern Southeast
E Behm Pink	101	55	9	Cabin Creek	Ketchikan	Southern Southeast
E Behm Pink	101	55	20	Wilson River	Ketchikan	Southern Southeast
E Behm Pink	101	55	40	Blossom River	Ketchikan	Southern Southeast
E Behm Pink	101	55	60	Bakewell Creek	Ketchikan	Southern Southeast
E Behm Pink	101	55	83	Red Creek	Ketchikan	Southern Southeast
E Behm Pink	101	55	87	Skull Creek	Ketchikan	Southern Southeast
E Behm Pink	101	60	9	Nooya Creek	Ketchikan	Southern Southeast
E Behm Pink	101	60	15	Rudyerd Creek	Ketchikan	Southern Southeast
E Behm Pink	101	60	20	Sandpiper Creek	Ketchikan	Southern Southeast
E Behm Pink	101	60	25	Valentine Creek	Ketchikan	Southern Southeast
E Behm Pink	101	60	30	Big Goat Creek	Ketchikan	Southern Southeast
E Behm Pink	101	71	25	Walker Cove L Head	Ketchikan	Southern Southeast
E Behm Pink	101	71	26	Walker Cove R Head	Ketchikan	Southern Southeast
E Behm Pink	101	71	28	Walker Creek	Ketchikan	Southern Southeast
E Behm Pink	101	71	50	Grace Creek	Ketchikan	Southern Southeast
E Behm Pink	101	71	63	Portage Creek	Ketchikan	Southern Southeast
E Behm Pink	101	71	04C	Clear Creek	Ketchikan	Southern Southeast
E Behm Pink	101	71	04E	Choca Creek	Ketchikan	Southern Southeast
E Behm Pink	101	71	04H	Humpy Creek	Ketchikan	Southern Southeast
E Behm Pink	101	71	04K	King Creek	Ketchikan	Southern Southeast
W Behm Pink	101	75	5	Herman Creek	Ketchikan	Southern Southeast
W Behm Pink	101	75	10	Grant Creek	Ketchikan	Southern Southeast
W Behm Pink	101	75	15	Eulachon River	Ketchikan	Southern Southeast
W Behm Pink	101	75	50	Klahini River	Ketchikan	Southern Southeast
W Behm Pink	101	75	76	Saks Creek	Ketchikan	Southern Southeast
W Behm Pink	101	80	3	Cow Creek	Ketchikan	Southern Southeast

-continued-

STOCK	DISTRICT	SUBDISTRICT	STREAM CODE	STREAM	AREA OFFICE	SUBREGION
W Behm Pink	101	80	40	Wasta Creek	Ketchikan	Southern Southeast
W Behm Pink	101	80	50	Spacious Bay R Head	Ketchikan	Southern Southeast
W Behm Pink	101	80	52	Margarita Creek	Ketchikan	Southern Southeast
W Behm Pink	101	80	60	Sea Lion Cove	Ketchikan	Southern Southeast
W Behm Pink	101	80	84	Short Creek	Ketchikan	Southern Southeast
W Behm Pink	101	90	29	Traitors Cove Creek	Ketchikan	Southern Southeast
W Behm Pink	101	90	39	Marguerite Creek	Ketchikan	Southern Southeast
W Behm Pink	101	90	48	Loring Creek	Ketchikan	Southern Southeast
W Behm Pink	101	90	50	Naha River	Ketchikan	Southern Southeast
W Behm Pink	101	90	60	Wolf Creek	Ketchikan	Southern Southeast
W Behm Pink	101	90	61	Moser Bay	Ketchikan	Southern Southeast
W Behm Pink	101	90	68	Lunch Creek	Ketchikan	Southern Southeast
W Behm Pink	101	90	71	Bond Bay South	Ketchikan	Southern Southeast
W Behm Pink	101	90	72	Bond Bay North	Ketchikan	Southern Southeast
W Behm Pink	101	90	75	Smugglers Creek	Ketchikan	Southern Southeast
W Behm Pink	101	90	76	Falls Ck/Smuggler Cv	Ketchikan	Southern Southeast
W Behm Pink	101	90	80	Helm Bay Head	Ketchikan	Southern Southeast
W Behm Pink	101	90	84	Helm Lake Creek	Ketchikan	Southern Southeast
W Behm Pink	101	90	86	Granite Ck/Raymnd Cv	Ketchikan	Southern Southeast
W Behm Pink	101	90	90	Deanna Creek	Ketchikan	Southern Southeast
W Behm Pink	101	90	92	Stewart Creek	Ketchikan	Southern Southeast
W Behm Pink	101	90	96	Heckman Creek	Ketchikan	Southern Southeast
W Behm Pink	101	90	97	Heckman Point North	Ketchikan	Southern Southeast
Moira Pink	102	30	17	Johnson Cove Creek	Ketchikan	Southern Southeast
Moira Pink	102	30	28	Perkins Creek	Ketchikan	Southern Southeast
Moira Pink	102	30	35	Moira S Arm Head SE	Ketchikan	Southern Southeast
Moira Pink	102	30	37	Moira S Arm Head S	Ketchikan	Southern Southeast
Moira Pink	102	30	43	Sick Creek	Ketchikan	Southern Southeast
Moira Pink	102	30	51	Frederick Creek	Ketchikan	Southern Southeast
Moira Pink	102	30	61	Dickman Bay Head	Ketchikan	Southern Southeast
Moira Pink	102	30	63	Dickman Bay	Ketchikan	Southern Southeast
Moira Pink	102	30	65	Kugel Creek	Ketchikan	Southern Southeast
Moira Pink	102	30	67	Kegan Cove	Ketchikan	Southern Southeast
Moira Pink	102	30	87	Aiken Cove	Ketchikan	Southern Southeast

-continued-

STOCK	DISTRICT	SUBDISTRICT	STREAM CODE	STREAM	AREA OFFICE	SUBREGION
Moira Pink	102	30	89	Miller Lake Creek	Ketchikan	Southern Southeast
Kasaan Pink	102	40	7	Lancaster Cove East	Ketchikan	Southern Southeast
Kasaan Pink	102	40	9	Lancaster Cove East	Ketchikan	Southern Southeast
Kasaan Pink	102	40	11	Lancaster Cove East	Ketchikan	Southern Southeast
Kasaan Pink	102	40	13	Kitkun Bay NE Side	Ketchikan	Southern Southeast
Kasaan Pink	102	40	17	Kitkun Bay	Ketchikan	Southern Southeast
Kasaan Pink	102	40	43	Disappearance Creek	Ketchikan	Southern Southeast
Kasaan Pink	102	40	47	W of Disappearance	Ketchikan	Southern Southeast
Kasaan Pink	102	40	52	Cannery Creek W Arm	Ketchikan	Southern Southeast
Kasaan Pink	102	40	60	Lagoon Creek	Ketchikan	Southern Southeast
Kasaan Pink	102	40	71	W Arm Chol Sd Head	Ketchikan	Southern Southeast
Kasaan Pink	102	40	73	W Arm Chol Sd Head	Ketchikan	Southern Southeast
Kasaan Pink	102	40	87	Sunny Creek	Ketchikan	Southern Southeast
Kasaan Pink	102	60	5	Saltery Cove Creek	Ketchikan	Southern Southeast
Kasaan Pink	102	60	7	S Hd Saltery Cove Ck	Ketchikan	Southern Southeast
Kasaan Pink	102	60	14	McKenzie Creek	Ketchikan	Southern Southeast
Kasaan Pink	102	60	16	Omar Creek	Ketchikan	Southern Southeast
Kasaan Pink	102	60	24	Old Tom Creek	Ketchikan	Southern Southeast
Kasaan Pink	102	60	30	Goose Bay Creek	Ketchikan	Southern Southeast
Kasaan Pink	102	60	37	Rock Creek	Ketchikan	Southern Southeast
Kasaan Pink	102	60	38	Dog Salmon Creek	Ketchikan	Southern Southeast
Kasaan Pink	102	60	39	142F Creek	Ketchikan	Southern Southeast
Kasaan Pink	102	60	42	Cabin Creek Polk In	Ketchikan	Southern Southeast
Kasaan Pink	102	60	68	Kina Creek	Ketchikan	Southern Southeast
Kasaan Pink	102	60	72	Twelvemile Creek	Ketchikan	Southern Southeast
Kasaan Pink	102	60	82	Harris River	Ketchikan	Southern Southeast
Kasaan Pink	102	60	84	Maybeso Creek	Ketchikan	Southern Southeast
Kasaan Pink	102	60	99	Kasaan Village Creek	Ketchikan	Southern Southeast
Kasaan Pink	102	70	28	Windfall Creek	Ketchikan	Southern Southeast
Hetta Pink	103	11	17	Hunter Bay E Head	Ketchikan	Southern Southeast
Hetta Pink	103	11	35	Little Datzkoo Head	Ketchikan	Southern Southeast
Hetta Pink	103	11	41	Datzkoo Harbor Head	Ketchikan	Southern Southeast
Hetta Pink	103	15	10	Klakas Inlet W Side	Ketchikan	Southern Southeast
Hetta Pink	103	15	14	Klakas Inlet W Side	Ketchikan	Southern Southeast

-continued-

STOCK	DISTRICT	SUBDISTRICT	STREAM CODE	STREAM	AREA OFFICE	SUBREGION
Hetta Pink	103	15	16	Klakas Left Head	Ketchikan	Southern Southeast
Hetta Pink	103	15	19	Klakas Head	Ketchikan	Southern Southeast
Hetta Pink	103	15	23	Klakas Right Head	Ketchikan	Southern Southeast
Hetta Pink	103	15	27	Klakas Lake Creek	Ketchikan	Southern Southeast
Hetta Pink	103	21	5	Nutkwa Creek North	Ketchikan	Southern Southeast
Hetta Pink	103	21	8	Nutkwa Creek	Ketchikan	Southern Southeast
E Dall Pink	103	25	5	Saltery Creek	Ketchikan	Southern Southeast
Hetta Pink	103	25	15	Deer Creek	Ketchikan	Southern Southeast
Hetta Pink	103	25	30	Hetta Portage Creek	Ketchikan	Southern Southeast
Hetta Pink	103	25	41	Coppermount Harbor	Ketchikan	Southern Southeast
Hetta Pink	103	25	47	Hetta Lake Creek	Ketchikan	Southern Southeast
E Dall Pink	103	30	35	Ham Cove Creek	Ketchikan	Southern Southeast
E Dall Pink	103	30	40	Grace Harbor Creek	Ketchikan	Southern Southeast
E Dall Pink	103	30	43	Vesta Bay	Ketchikan	Southern Southeast
E Dall Pink	103	30	46	Rose Inlet	Ketchikan	Southern Southeast
E Dall Pink	103	40	1	Barry Creek	Ketchikan	Southern Southeast
E Dall Pink	103	40	2	Tlevak Creek	Ketchikan	Southern Southeast
E Dall Pink	103	40	3	Soda Bay NW Side R	Ketchikan	Southern Southeast
E Dall Pink	103	40	9	Shelikof Creek	Ketchikan	Southern Southeast
E Dall Pink	103	40	13	Soda Creek	Ketchikan	Southern Southeast
E Dall Pink	103	40	30	Flat Creek	Ketchikan	Southern Southeast
E Dall Pink	103	40	33	Natzuhini N Center	Ketchikan	Southern Southeast
E Dall Pink	103	40	35	Natzuhini NE Corner	Ketchikan	Southern Southeast
E Dall Pink	103	40	39	Natzuhini Bay E Side	Ketchikan	Southern Southeast
E Dall Pink	103	40	41	Hydaburg River	Ketchikan	Southern Southeast
E Dall Pink	103	40	64	N of Rose Point Ck	Ketchikan	Southern Southeast
E Dall Pink	103	40	71	South View Cove	Ketchikan	Southern Southeast
E Dall Pink	103	40	73	View Cove Head	Ketchikan	Southern Southeast
E Dall Pink	103	40	78	Breezy Bay South	Ketchikan	Southern Southeast
E Dall Pink	103	40	80	Breezy Bay Head	Ketchikan	Southern Southeast
E Dall Pink	103	40	84	Farallon Bay W Head	Ketchikan	Southern Southeast
E Dall Pink	103	40	86	North Bay	Ketchikan	Southern Southeast
E Dall Pink	103	40	89	Lively Creek	Ketchikan	Southern Southeast
Klawock Pink	103	50	21	Port Estrella Head	Ketchikan	Southern Southeast

-continued-

STOCK	DISTRICT	SUBDISTRICT	STREAM CODE	STREAM	AREA OFFICE	SUBREGION
Klawock Pink	103	50	22	Port Estrella R Head	Ketchikan	Southern Southeast
E Dall Pink	103	50	27	Waterfall Creek N	Ketchikan	Southern Southeast
E Dall Pink	103	50	29	Waterfall Creek S	Ketchikan	Southern Southeast
E Dall Pink	103	50	32	E of Waterfall Creek	Ketchikan	Southern Southeast
E Dall Pink	103	50	35	Ulloa Bay	Ketchikan	Southern Southeast
E Dall Pink	103	50	42	Port Refugio E Arm	Ketchikan	Southern Southeast
E Dall Pink	103	50	44	Port Refugio W Arm R	Ketchikan	Southern Southeast
E Dall Pink	103	50	47	Port Refugio W Arm S	Ketchikan	Southern Southeast
E Dall Pink	103	50	49	Port Refugio W Arm H	Ketchikan	Southern Southeast
E Dall Pink	103	50	51	Port Refugio North	Ketchikan	Southern Southeast
Sea Otter Sound Pink	103	50	58	Port Delores	Ketchikan	Southern Southeast
Klawock Pink	103	60	3	Picnic Bay	Ketchikan	Southern Southeast
Klawock Pink	103	60	9	Shinaku Inlet	Ketchikan	Southern Southeast
Klawock Pink	103	60	11	Shinaku Inlet N Side	Ketchikan	Southern Southeast
Klawock Pink	103	60	13	Shinaku Creek	Ketchikan	Southern Southeast
Klawock Pink	103	60	25	Big Salt Lk N Side L	Ketchikan	Southern Southeast
Klawock Pink	103	60	27	Big Salt Lk N Side M	Ketchikan	Southern Southeast
Klawock Pink	103	60	29	Steelhead Creek	Ketchikan	Southern Southeast
Klawock Pink	103	60	31	Blackbear Ck Big Slt	Ketchikan	Southern Southeast
Klawock Pink	103	60	35	Dog Salmon Creek	Ketchikan	Southern Southeast
Klawock Pink	103	60	37	Big Salt Lk SW Side	Ketchikan	Southern Southeast
Klawock Pink	103	60	41	Airport Ck N Klawock	Ketchikan	Southern Southeast
Klawock Pink	103	60	43	Airport Ck S Klawock	Ketchikan	Southern Southeast
Klawock Pink	103	60	50	Crab Bay at Craig	Ketchikan	Southern Southeast
Klawock Pink	103	60	57	St Nicholas N Side	Ketchikan	Southern Southeast
Klawock Pink	103	60	59	Port St Nicholas Hd	Ketchikan	Southern Southeast
Klawock Pink	103	60	65	Doyle Creek	Ketchikan	Southern Southeast
Klawock Pink	103	60	66	Doyle Bay East Side	Ketchikan	Southern Southeast
Klawock Pink	103	60	71	Trocadero B NW Side	Ketchikan	Southern Southeast
Klawock Pink	103	60	73	Trocadero B N Side	Ketchikan	Southern Southeast
Klawock Pink	103	60	75	Trocadero Bay	Ketchikan	Southern Southeast
Klawock Pink	103	60	77	Trocadero B R Head	Ketchikan	Southern Southeast
Klawock Pink	103	60	81	Little John Creek	Ketchikan	Southern Southeast
Klawock Pink	103	60	85	Sandy Cove Right	Ketchikan	Southern Southeast

-continued-

STOCK	DISTRICT	SUBDISTRICT	STREAM CODE	STREAM	AREA OFFICE	SUBREGION
Klawock Pink	103	60	87	Deep Bay	Ketchikan	Southern Southeast
Klawock Pink	103	60	89	Perlas Point Creek	Ketchikan	Southern Southeast
Klawock Pink	103	60	90	East of Caldera	Ketchikan	Southern Southeast
Klawock Pink	103	60	92	Port Caldera	Ketchikan	Southern Southeast
Klawock Pink	103	60	93	West of Caldera	Ketchikan	Southern Southeast
Klawock Pink	103	70	5	James Creek	Ketchikan	Southern Southeast
Klawock Pink	103	70	8	Goodrow Creek	Ketchikan	Southern Southeast
Klawock Pink	103	70	11	11 Mile Creek	Ketchikan	Southern Southeast
Sea Otter Sound Pink	103	80	15	Warm Chuck In SW	Ketchikan	Southern Southeast
Sea Otter Sound Pink	103	80	24	Warm Chuck NW Side	Ketchikan	Southern Southeast
Sea Otter Sound Pink	103	80	26	Warm Chuck Left Head	Ketchikan	Southern Southeast
Sea Otter Sound Pink	103	80	31	Chuck Lake Creek	Ketchikan	Southern Southeast
Klawock Pink	103	80	35	Nossuk Bay Left Head	Ketchikan	Southern Southeast
Klawock Pink	103	80	42	Salt Lk Bay N Head	Ketchikan	Southern Southeast
Klawock Pink	103	80	44	Salt Lk Bay Head	Ketchikan	Southern Southeast
Klawock Pink	103	80	46	Salt Lk Bay R Head	Ketchikan	Southern Southeast
Klawock Pink	103	80	50	S of Salt Lake Bay	Ketchikan	Southern Southeast
Klawock Pink	103	80	56	Inside St Phillips S	Ketchikan	Southern Southeast
Klawock Pink	103	90	4	Sarheen Cove	Ketchikan	Southern Southeast
Klawock Pink	103	90	6	El Capitan East Side	Ketchikan	Southern Southeast
Klawock Pink	103	90	25	Yatuk Creek	Ketchikan	Southern Southeast
Klawock Pink	103	90	26	Naukati Creek	Ketchikan	Southern Southeast
Klawock Pink	103	90	27	Gutchie Creek	Ketchikan	Southern Southeast
Klawock Pink	103	90	28	Slow Creek	Ketchikan	Southern Southeast
Klawock Pink	103	90	30	Staney Creek	Ketchikan	Southern Southeast
Klawock Pink	103	90	42	Shaheen Creek	Ketchikan	Southern Southeast
Sea Otter Sound Pink	103	90	57	Edna Bay	Ketchikan	Southern Southeast
Sea Otter Sound Pink	103	90	58	Charley Creek	Ketchikan	Southern Southeast
Sea Otter Sound Pink	103	90	59	Edna Bay Head	Ketchikan	Southern Southeast
Sea Otter Sound Pink	103	90	61	Hamlin Creek	Ketchikan	Southern Southeast
Sea Otter Sound Pink	103	90	63	Van Sant Cove	Ketchikan	Southern Southeast
Sea Otter Sound Pink	103	90	64	Holbrook In W Side	Ketchikan	Southern Southeast
Sea Otter Sound Pink	103	90	65	Holbrook Inlet Head	Ketchikan	Southern Southeast
Sea Otter Sound Pink	103	90	67	Token Bay N Side	Ketchikan	Southern Southeast

-continued-

STOCK	DISTRICT	SUBDISTRICT	STREAM CODE	STREAM	AREA OFFICE	SUBREGION
Sea Otter Sound Pink	103	90	69	Token Bay Head	Ketchikan	Southern Southeast
Sea Otter Sound Pink	103	90	73	Token Bay Southeast	Ketchikan	Southern Southeast
Sea Otter Sound Pink	103	90	75	Tenass Passage	Ketchikan	Southern Southeast
Sea Otter Sound Pink	103	90	80	Devilfish Bay Head	Ketchikan	Southern Southeast
Sea Otter Sound Pink	103	90	81	Devilfish Bay N Side	Ketchikan	Southern Southeast
Affleck Canal Pink	105	10	3	2nd N Louise Cove	Petersburg	Southern Southeast
Affleck Canal Pink	105	10	9	West of Pt Amelius	Petersburg	Southern Southeast
Affleck Canal Pink	105	10	10	N of Louise Cove	Petersburg	Southern Southeast
Affleck Canal Pink	105	10	11	Louise Cove	Petersburg	Southern Southeast
Affleck Canal Pink	105	10	16	Linda Sue Slough	Petersburg	Southern Southeast
Affleck Canal Pink	105	10	17	East of Bear Harbor	Petersburg	Southern Southeast
Affleck Canal Pink	105	10	18	Affleck Canal NE	Petersburg	Southern Southeast
Affleck Canal Pink	105	10	19	Kathleen Creek	Petersburg	Southern Southeast
Affleck Canal Pink	105	10	21	Joan Ck Affleck Can	Petersburg	Southern Southeast
Affleck Canal Pink	105	10	24	Bear Harbor Creek	Petersburg	Southern Southeast
Affleck Canal Pink	105	10	26	Salt Chuck Affleck	Petersburg	Southern Southeast
Affleck Canal Pink	105	10	28	Kell Slough Creek	Petersburg	Southern Southeast
Affleck Canal Pink	105	10	32	Kell Bay Creek	Petersburg	Southern Southeast
Affleck Canal Pink	105	20	2	Kim Creek Beauclerc	Petersburg	Southern Southeast
Affleck Canal Pink	105	20	4	Paul Creek N Arm Hd	Petersburg	Southern Southeast
Affleck Canal Pink	105	20	5	P Beauclerc NW Head	Petersburg	Southern Southeast
Affleck Canal Pink	105	20	6	P Beauclerc Lk	Petersburg	Southern Southeast
Affleck Canal Pink	105	20	7	P Beauclerc NW Side	Petersburg	Southern Southeast
Affleck Canal Pink	105	20	8	Cannery Ck Beauclerc	Petersburg	Southern Southeast
Affleck Canal Pink	105	20	9	P Beauclerc S Arm Hd	Petersburg	Southern Southeast
Affleck Canal Pink	105	20	10	Gail Ck S Arm SE Hd	Petersburg	Southern Southeast
Affleck Canal Pink	105	20	12	P Beauclerc S Arm E	Petersburg	Southern Southeast
Affleck Canal Pink	105	31	3	Kushneahin Creek	Petersburg	Southern Southeast
Affleck Canal Pink	105	31	19	Alvin Bay North Side	Petersburg	Southern Southeast
Affleck Canal Pink	105	31	20	Alvin Bay Head	Petersburg	Southern Southeast
Affleck Canal Pink	105	31	25	Reid Bay N Arm E	Petersburg	Southern Southeast
Affleck Canal Pink	105	31	27	Reid Bay West Side	Petersburg	Southern Southeast
Affleck Canal Pink	105	31	29	Reid Bay SW Arm Hd	Petersburg	Southern Southeast
Affleck Canal Pink	105	32	1	Lovelace Creek	Petersburg	Southern Southeast

-continued-

STOCK	DISTRICT	SUBDISTRICT	STREAM CODE	STREAM	AREA OFFICE	SUBREGION
Affleck Canal Pink	105	32	4	Tunehean Creek	Petersburg	Southern Southeast
Affleck Canal Pink	105	32	73	3 Mile Arm NW Arm Hd	Petersburg	Southern Southeast
Affleck Canal Pink	105	32	80	Seclusion Harbor N	Petersburg	Southern Southeast
Affleck Canal Pink	105	32	82	Seclusion Hbr Head	Petersburg	Southern Southeast
Shiple Bay Pink	105	41	5	Hole-In-The-Wall SE	Petersburg	Southern Southeast
Shiple Bay Pink	105	42	5	Calder Creek	Petersburg	Southern Southeast
Shiple Bay Pink	105	42	6	Marble Creek Shakan	Petersburg	Southern Southeast
Shiple Bay Pink	105	42	8	Bear Ck Dry Pass	Petersburg	Southern Southeast
Shiple Bay Pink	105	42	9	El Capitan Creek	Petersburg	Southern Southeast
Shiple Bay Pink	105	42	10	Wolf Ck N El Capitan	Petersburg	Southern Southeast
Shiple Bay Pink	105	42	11	El Capitan-Aneskett	Petersburg	Southern Southeast
Shiple Bay Pink	105	42	12	El Capitan Dry Pass	Petersburg	Southern Southeast
Shiple Bay Pink	105	43	2	Shiple Bay Lk Ck	Petersburg	Southern Southeast
Shiple Bay Pink	105	43	5	Shiple Bay SE Side	Petersburg	Southern Southeast
Shiple Bay Pink	105	43	6	Shiple Bay S Side	Petersburg	Southern Southeast
Shiple Bay Pink	105	50	1	Trout Ck Kosciusko I	Petersburg	Southern Southeast
Ratz Harbor Pink	106	10	4	Sal Creek	Petersburg	Southern Southeast
Ratz Harbor Pink	106	10	6	Little Ratz Creek	Petersburg	Southern Southeast
Ratz Harbor Pink	106	10	10	Ratz Hbr Creek	Petersburg	Southern Southeast
Ratz Harbor Pink	106	10	30	Eagle Ck Luck Lake	Petersburg	Southern Southeast
Burnett Pink	106	20	10	Streets Ck Rocky Bay	Petersburg	Southern Southeast
Burnett Pink	106	20	23	McHenry Anchorage Ck	Petersburg	Southern Southeast
Burnett Pink	106	21	3	Hatchery Lk E End	Petersburg	Southern Southeast
Burnett Pink	106	21	4	Falls Ck McHenry In	Petersburg	Southern Southeast
Burnett Pink	106	21	5	Trout Ck McHenry In	Petersburg	Southern Southeast
Burnett Pink	106	22	4	Mosman Inlet NW Head	Petersburg	Southern Southeast
Burnett Pink	106	22	6	Flat Ck Mosman Inlet	Petersburg	Southern Southeast
Burnett Pink	106	22	8	Mosman Creek E Head	Petersburg	Southern Southeast
Burnett Pink	106	22	10	Mosman In SE Head	Petersburg	Southern Southeast
Burnett Pink	106	22	16	Navy Cr	Petersburg	Southern Southeast
Whale Pass Pink	106	30	4	Quiet Harbor	Petersburg	Southern Southeast
Whale Pass Pink	106	30	10	Porcupine Ck Steamer	Petersburg	Southern Southeast
Whale Pass Pink	106	30	12	Chum Creek Coffman	Petersburg	Southern Southeast
Whale Pass Pink	106	30	15	Coffman Ck Coffman C	Petersburg	Southern Southeast

-continued-

STOCK	DISTRICT	SUBDISTRICT	STREAM CODE	STREAM	AREA OFFICE	SUBREGION
Whale Pass Pink	106	30	51	Hatchery Ck Sweetwater	Petersburg	Southern Southeast
Whale Pass Pink	106	30	72	Mabel Ck Whale Pass	Petersburg	Southern Southeast
Whale Pass Pink	106	30	82	Squaw Ck Whale Pass	Petersburg	Southern Southeast
Whale Pass Pink	106	30	85	Exchange Cove Creek	Petersburg	Southern Southeast
Whale Pass Pink	106	35	77	Whale Passage W Head	Petersburg	Southern Southeast
Whale Pass Pink	106	35	80	108 Creek Whale Pass	Petersburg	Southern Southeast
Totem Bay Pink	106	41	10	Salmon Bay Creek	Petersburg	Southern Southeast
Totem Bay Pink	106	41	30	Red Lake Creek Sumner	Petersburg	Southern Southeast
Totem Bay Pink	106	41	34	Big Ck Red Bay	Petersburg	Southern Southeast
Totem Bay Pink	106	41	42	Buster Creek	Petersburg	Southern Southeast
Totem Bay Pink	106	41	44	Alder Creek	Petersburg	Southern Southeast
Totem Bay Pink	106	41	45	Flicker Creek	Petersburg	Southern Southeast
Totem Bay Pink	106	41	55	Totem Creek	Petersburg	Southern Southeast
Totem Bay Pink	106	41	58	Zim Ck Totem Bay	Petersburg	Southern Southeast
Totem Bay Pink	106	41	60	Totem Bay NE Side	Petersburg	Southern Southeast
Totem Bay Pink	106	41	65	Douglas Bay	Petersburg	Southern Southeast
Totem Bay Pink	106	42	3	St Johns Harbor	Petersburg	Southern Southeast
Totem Bay Pink	106	42	10	Kah Sheets Creek	Petersburg	Southern Southeast
Totem Bay Pink	106	44	60	Petersburg Creek	Petersburg	Southern Southeast
Union Bay Pink	107	10	10	Emerald Creek	Petersburg	Southern Southeast
Union Bay Pink	107	10	20	Vixen Inlet Creek	Petersburg	Southern Southeast
Union Bay Pink	107	10	24	Vixen Inlet West Sd	Petersburg	Southern Southeast
Union Bay Pink	107	10	25	Vixen Harbor	Petersburg	Southern Southeast
Union Bay Pink	107	10	30	Black Bear Creek	Petersburg	Southern Southeast
Union Bay Pink	107	10	70	Kudays Ck S Etolin	Petersburg	Southern Southeast
Union Bay Pink	107	10	71	Chum Ck S Etolin Mid	Petersburg	Southern Southeast
Union Bay Pink	107	10	72	S Etolin Island East	Petersburg	Southern Southeast
Anan Pink	107	20	1	Anan Creek	Petersburg	Southern Southeast
Anan Pink	107	20	10	Santa Anna Inlet	Petersburg	Southern Southeast
Anan Pink	107	20	15	June Creek	Petersburg	Southern Southeast
Anan Pink	107	20	16	Watkins Point Creek	Petersburg	Southern Southeast
Anan Pink	107	20	20	Canoe Pass Etolin Is	Petersburg	Southern Southeast
Anan Pink	107	20	23	Fisherman Chuck	Petersburg	Southern Southeast
Anan Pink	107	20	30	Menefee Creek	Petersburg	Southern Southeast

-continued-

STOCK	DISTRICT	SUBDISTRICT	STREAM CODE	STREAM	AREA OFFICE	SUBREGION
Anan Pink	107	20	70	Fools Inlet Head W	Petersburg	Southern Southeast
Anan Pink	107	20	71	Fools Inlet Head E	Petersburg	Southern Southeast
Anan Pink	107	30	30	Thoms Creek	Petersburg	Southern Southeast
Anan Pink	107	30	70	Snake Ck Olive Cove	Petersburg	Southern Southeast
Anan Pink	107	30	78	Anita Bay Head W	Petersburg	Southern Southeast
Anan Pink	107	30	80	Brad Ck NW Anita Bay	Petersburg	Southern Southeast
Anan Pink	107	30	90	Dog Salmon NE Etolin	Petersburg	Southern Southeast
Anan Pink	107	40	22	Berg Creek	Petersburg	Southern Southeast
Anan Pink	107	40	25	Oerns Creek	Petersburg	Southern Southeast
Anan Pink	107	40	38	Marten Ck Bradfield	Petersburg	Southern Southeast
Anan Pink	107	40	40	Franks Ck Bradfield	Petersburg	Southern Southeast
Anan Pink	107	40	47	Tom Lake Creek	Petersburg	Southern Southeast
Anan Pink	107	40	49	Harding River	Petersburg	Southern Southeast
Anan Pink	107	40	53	Bradfield River E Fk	Petersburg	Southern Southeast
Anan Pink	107	40	55	Eagle R Bradfield	Petersburg	Southern Southeast
Anan Pink	107	40	57	1st E of Hoya Creek	Petersburg	Southern Southeast
Anan Pink	107	40	64	Bradfield Can SW E	Petersburg	Southern Southeast
Anan Pink	107	40	65	Bradfield Can SW W	Petersburg	Southern Southeast
Anan Pink	107	45	5	Crittenden Creek	Petersburg	Southern Southeast
Anan Pink	107	45	6	E of Crittenden Ck	Petersburg	Southern Southeast
Stikine Pink	108	20	1	King George Ck	Petersburg	Southern Southeast
Stikine Pink	108	40	20	Andrews Creek	Petersburg	Southern Southeast
Stikine Pink	108	40	13A	W of Hot Springs	Petersburg	Southern Southeast
Stikine Pink	108	41	10	North Arm Creek	Petersburg	Southern Southeast
Stikine Pink	108	50	3	Bear Ck Frederick Sd	Petersburg	Southern Southeast
Stikine Pink	108	60	6	Fivemile Ck Sukoi Is	Petersburg	Southern Southeast
SE Baranof Pink	109	10	6	Sashin Ck P Walter N	Sitka	Northern Southeast Inside
SE Baranof Pink	109	10	9	Lovers Cove Creek	Sitka	Northern Southeast Inside
SE Baranof Pink	109	10	23	Deep Cove NW Head	Sitka	Northern Southeast Inside
SE Baranof Pink	109	10	28	Patterson Bay Head	Sitka	Northern Southeast Inside
E Baranof Pink	109	20	7	Gut Bay Head	Sitka	Northern Southeast Inside
E Baranof Pink	109	20	16	Red Bluff Bay S Head	Sitka	Northern Southeast Inside
Eliza Harbor Pink	109	30	1	Woewodski Harbor	Petersburg	Northern Southeast Inside
Eliza Harbor Pink	109	30	3	Eliza Creek	Petersburg	Northern Southeast Inside

-continued-

STOCK	DISTRICT	SUBDISTRICT	STREAM CODE	STREAM	AREA OFFICE	SUBREGION
Eliza Harbor Pink	109	30	4	Eliza Hbr Head West	Petersburg	Northern Southeast Inside
Eliza Harbor Pink	109	30	5	Eliza Hbr West Side	Petersburg	Northern Southeast Inside
Eliza Harbor Pink	109	30	6	Eliza Lake Creek	Petersburg	Northern Southeast Inside
Eliza Harbor Pink	109	30	8	Chapin Bay Head	Petersburg	Northern Southeast Inside
Eliza Harbor Pink	109	30	10	Herring Bay East	Petersburg	Northern Southeast Inside
Eliza Harbor Pink	109	30	11	Herring Bay Middle	Petersburg	Northern Southeast Inside
Eliza Harbor Pink	109	30	13	Bergmann Creek	Petersburg	Northern Southeast Inside
Eliza Harbor Pink	109	30	16	Tyee Head East	Petersburg	Northern Southeast Inside
Eliza Harbor Pink	109	30	17	Curtiss Creek	Petersburg	Northern Southeast Inside
Eliza Harbor Pink	109	30	18	Surprise Harbor East	Petersburg	Northern Southeast Inside
Eliza Harbor Pink	109	30	25	Little Pybus Bay Ck	Petersburg	Northern Southeast Inside
Saginaw Bay Pink	109	42	1	Point White Creek	Petersburg	Northern Southeast Inside
Saginaw Bay Pink	109	42	5	Jenny Ck	Petersburg	Northern Southeast Inside
Saginaw Bay Pink	109	42	9	Cathedral Falls Ck	Petersburg	Northern Southeast Inside
Saginaw Bay Pink	109	42	10	Hamilton River	Petersburg	Northern Southeast Inside
Saginaw Bay Pink	109	42	30	Kadake Creek	Petersburg	Northern Southeast Inside
Saginaw Bay Pink	109	44	35	Straight Ck Sag Bay	Petersburg	Northern Southeast Inside
Saginaw Bay Pink	109	44	37	Saginaw Bay S Head	Petersburg	Northern Southeast Inside
Saginaw Bay Pink	109	44	39	Saginaw Creek	Petersburg	Northern Southeast Inside
Saginaw Bay Pink	109	45	10	Security Bay Creek	Petersburg	Northern Southeast Inside
Saginaw Bay Pink	109	45	13	Salt Chuck-Security	Petersburg	Northern Southeast Inside
Saginaw Bay Pink	109	45	15	Security Bay S Side	Petersburg	Northern Southeast Inside
Saginaw Bay Pink	109	45	16	Security Bay S Mid	Petersburg	Northern Southeast Inside
Saginaw Bay Pink	109	45	17	Lookout Pt Ck Sec B	Petersburg	Northern Southeast Inside
Saginaw Bay Pink	109	51	5	Piledriver Cove NW Kuiu	Petersburg	Northern Southeast Inside
Saginaw Bay Pink	109	51	11	0.7M S Washington B	Petersburg	Northern Southeast Inside
Tebenkof Pink	109	52	1	East of Pt Sullivan	Petersburg	Northern Southeast Inside
Tebenkof Pink	109	52	2	Outer Rowan Bay	Petersburg	Northern Southeast Inside
Tebenkof Pink	109	52	4	Rowan Bay NW Side	Petersburg	Northern Southeast Inside
Tebenkof Pink	109	52	5	Wanigan Creek	Petersburg	Northern Southeast Inside
Tebenkof Pink	109	52	7	Rowan Creek	Petersburg	Northern Southeast Inside
Tebenkof Pink	109	52	8	Rowan Bay E Head	Petersburg	Northern Southeast Inside
Tebenkof Pink	109	52	9	Rowan Bay SE Head	Petersburg	Northern Southeast Inside
Tebenkof Pink	109	52	30	Pillar Bay Head	Petersburg	Northern Southeast Inside

-continued-

STOCK	DISTRICT	SUBDISTRICT	STREAM CODE	STREAM	AREA OFFICE	SUBREGION
Tebenkof Pink	109	52	35	Kutlaku Creek	Petersburg	Northern Southeast Inside
Tebenkof Pink	109	52	50	Pillar Bay SW Side	Petersburg	Northern Southeast Inside
Tebenkof Pink	109	52	55	Kwatahein Ck Pillar	Petersburg	Northern Southeast Inside
Tebenkof Pink	109	62	3	Piledriver Cove Teb	Petersburg	Northern Southeast Inside
Tebenkof Pink	109	62	9	4th NE of Gap Pt	Petersburg	Northern Southeast Inside
Tebenkof Pink	109	62	10	Elena Bay NW Side	Petersburg	Northern Southeast Inside
Tebenkof Pink	109	62	11	Elena Bay NW Head	Petersburg	Northern Southeast Inside
Tebenkof Pink	109	62	12	Elena Bay Head	Petersburg	Northern Southeast Inside
Tebenkof Pink	109	62	13	Alecks Creek	Petersburg	Northern Southeast Inside
Tebenkof Pink	109	62	14	Sample Creek	Petersburg	Northern Southeast Inside
Tebenkof Pink	109	62	15	Slough Creek	Petersburg	Northern Southeast Inside
Tebenkof Pink	109	62	17	W of Long Island	Petersburg	Northern Southeast Inside
Tebenkof Pink	109	62	18	Goose Trap Ck	Petersburg	Northern Southeast Inside
Tebenkof Pink	109	62	20	Petrof Bay SE Head	Petersburg	Northern Southeast Inside
Tebenkof Pink	109	62	22	Petrof Bay S Head	Petersburg	Northern Southeast Inside
Tebenkof Pink	109	62	24	Petrof Bay W Head	Petersburg	Northern Southeast Inside
Tebenkof Pink	109	62	26	Petrof Bay SW Head	Petersburg	Northern Southeast Inside
Tebenkof Pink	109	62	28	William Ck Thetis E	Petersburg	Northern Southeast Inside
Tebenkof Pink	109	62	29	Wolf Ck Thetis Bay	Petersburg	Northern Southeast Inside
Tebenkof Pink	109	62	30	Thetis Bay SW Head	Petersburg	Northern Southeast Inside
Tebenkof Pink	109	62	31	Thetis B Salt Chuck	Petersburg	Northern Southeast Inside
Tebenkof Pink	109	62	36	Neal Creek	Petersburg	Northern Southeast Inside
Tebenkof Pink	109	62	38	Gedney Hbr S Head	Petersburg	Northern Southeast Inside
Tebenkof Pink	109	62	13A	1st S Alecks Creek	Petersburg	Northern Southeast Inside
Tebenkof Pink	109	63	1	Gods Pocket West	Petersburg	Northern Southeast Inside
Tebenkof Pink	109	63	2	Gods Pocket North	Petersburg	Northern Southeast Inside
Tebenkof Pink	109	63	3	2nd W Joyce Creek	Petersburg	Northern Southeast Inside
Tebenkof Pink	109	63	5	Joyce Ck Malmesbury	Petersburg	Northern Southeast Inside
Tebenkof Pink	109	63	12	P Malmesbury Lake Ck	Petersburg	Northern Southeast Inside
Tebenkof Pink	109	63	15	P Malmesbury S Arm E	Petersburg	Northern Southeast Inside
Tebenkof Pink	109	63	17	P Malmesbury S Arm S	Petersburg	Northern Southeast Inside
Tebenkof Pink	109	63	02C	Tavin Creek	Petersburg	Northern Southeast Inside
Portage Bay Pink	110	11	3	Twelvemile Ck Fred S	Petersburg	Northern Southeast Inside
Portage Bay Pink	110	13	4	Dry Bay Creek	Petersburg	Northern Southeast Inside

-continued-

STOCK	DISTRICT	SUBDISTRICT	STREAM CODE	STREAM	AREA OFFICE	SUBREGION
Farragut Bay Pink	110	14	5	Farragut Bay N Arm	Petersburg	Northern Southeast Inside
Farragut Bay Pink	110	14	7	Farragut River	Petersburg	Northern Southeast Inside
Farragut Bay Pink	110	14	8	Dale Ck Francis Anch	Petersburg	Northern Southeast Inside
Farragut Bay Pink	110	15	3	Cat Creek Pt. Highland	Petersburg	Northern Southeast Inside
Portage Bay Pink	110	16	2	Portage Bay Head	Petersburg	Northern Southeast Inside
Portage Bay Pink	110	16	7	2 nd W of West Point	Petersburg	Northern Southeast Inside
Portage Bay Pink	110	16	13	1 st E Schooner Is	Petersburg	Northern Southeast Inside
Portage Bay Pink	110	16	14	Schooner Island	Petersburg	Northern Southeast Inside
Portage Bay Pink	110	17	5	SW of Pinta Rocks	Petersburg	Northern Southeast Inside
Pybus/Gambier Pink	110	21	4	False Pt Pybus Creek	Petersburg	Northern Southeast Inside
Pybus/Gambier Pink	110	21	5	N of Square Point	Petersburg	Northern Southeast Inside
Pybus/Gambier Pink	110	22	2	Old Mans Ck Pybus B	Petersburg	Northern Southeast Inside
Pybus/Gambier Pink	110	22	4	Amber Ck N Arm Pybus	Petersburg	Northern Southeast Inside
Pybus/Gambier Pink	110	22	6	Pybus Bay Head	Petersburg	Northern Southeast Inside
Pybus/Gambier Pink	110	22	8	Pybus Bay Main Arm	Petersburg	Northern Southeast Inside
Pybus/Gambier Pink	110	22	9	Beautiful Creek	Petersburg	Northern Southeast Inside
Pybus/Gambier Pink	110	22	12	Donkey Creek	Petersburg	Northern Southeast Inside
Pybus/Gambier Pink	110	22	14	Cannery Cove Pybus B	Petersburg	Northern Southeast Inside
Pybus/Gambier Pink	110	23	4	Last Chance Ck Gam B	Petersburg	Northern Southeast Inside
Pybus/Gambier Pink	110	23	5	Gambier B N Arm West	Petersburg	Northern Southeast Inside
Pybus/Gambier Pink	110	23	6	Marker Creek	Petersburg	Northern Southeast Inside
Pybus/Gambier Pink	110	23	7	West of Marker Creek	Petersburg	Northern Southeast Inside
Pybus/Gambier Pink	110	23	8	Johnston Creek	Petersburg	Northern Southeast Inside
Pybus/Gambier Pink	110	23	10	Bowman Creek	Petersburg	Northern Southeast Inside
Pybus/Gambier Pink	110	23	12	1 st East of Bowman	Petersburg	Northern Southeast Inside
Pybus/Gambier Pink	110	23	19	Snug Cove Gambier B	Petersburg	Northern Southeast Inside
Pybus/Gambier Pink	110	23	40	East of Snug Cove	Petersburg	Northern Southeast Inside
Houghton Pink	110	31	1	Rockpile Ck Stephens	Petersburg	Northern Southeast Inside
Houghton Pink	110	31	4	Roberts Island Ck	Petersburg	Northern Southeast Inside
Houghton Pink	110	32	2	Goat Ck Windham Bay	Petersburg	Northern Southeast Inside
Houghton Pink	110	32	7	Tunnel Ck Windham	Petersburg	Northern Southeast Inside
Houghton Pink	110	32	9	Chuck R Windham Bay	Petersburg	Northern Southeast Inside
Houghton Pink	110	32	14	Surprise Ck Windham	Petersburg	Northern Southeast Inside
Houghton Pink	110	33	6	Herman Klaus Creek	Petersburg	Northern Southeast Inside

-continued-

STOCK	DISTRICT	SUBDISTRICT	STREAM CODE	STREAM	AREA OFFICE	SUBREGION
Houghton Pink	110	33	8	Nancy Ck Hobart Bay	Petersburg	Northern Southeast Inside
Houghton Pink	110	33	13	Lauras Creek	Petersburg	Northern Southeast Inside
Houghton Pink	110	34	1	P Houghton N Side	Petersburg	Northern Southeast Inside
Houghton Pink	110	34	2	West of Bluffs	Petersburg	Northern Southeast Inside
Houghton Pink	110	34	3	Rusty River	Petersburg	Northern Southeast Inside
Houghton Pink	110	34	6	Glen Creek	Petersburg	Northern Southeast Inside
Houghton Pink	110	34	8	Sanborn Creek	Petersburg	Northern Southeast Inside
Houghton Pink	110	34	12	Placer Ck P Houghton	Petersburg	Northern Southeast Inside
Houghton Pink	110	34	13	1st E of Negro Creek	Petersburg	Northern Southeast Inside
Houghton Pink	110	34	14	Negro Creek	Petersburg	Northern Southeast Inside
Houghton Pink	110	34	01A	Harmony Creek	Petersburg	Northern Southeast Inside
Seymour Canal Pink	111	11	20	Bear Ck Seymour Can	Juneau	Northern Southeast Inside
Seymour Canal Pink	111	12	5	Pleasant Bay Creek	Juneau	Northern Southeast Inside
Seymour Canal Pink	111	13	10	Mole River	Juneau	Northern Southeast Inside
Seymour Canal Pink	111	13	15	Mole Harbor N Side	Juneau	Northern Southeast Inside
Seymour Canal Pink	111	14	38	Opposite S Tiedeman	Juneau	Northern Southeast Inside
Seymour Canal Pink	111	14	42	Opp Middle Tiedeman	Juneau	Northern Southeast Inside
Seymour Canal Pink	111	14	44	W Side Seymour Canal	Juneau	Northern Southeast Inside
Seymour Canal Pink	111	15	20	Windfall Creek	Juneau	Northern Southeast Inside
Seymour Canal Pink	111	15	22	Windfall Hbr S Head	Juneau	Northern Southeast Inside
Seymour Canal Pink	111	15	24	Windfall Hbr W Side	Juneau	Northern Southeast Inside
Seymour Canal Pink	111	15	30	Pack Creek	Juneau	Northern Southeast Inside
Seymour Canal Pink	111	16	35	Swan Cove South Ck	Juneau	Northern Southeast Inside
Seymour Canal Pink	111	16	40	Swan Cove Creek	Juneau	Northern Southeast Inside
Seymour Canal Pink	111	17	10	King Salmon River	Juneau	Northern Southeast Inside
Stephens Pink	111	20	20	Thistle Ledge Creek	Juneau	Northern Southeast Inside
Stephens Pink	111	20	24	Point League Creek	Juneau	Northern Southeast Inside
Stephens Pink	111	20	31	S of Midway Point	Juneau	Northern Southeast Inside
Stephens Pink	111	20	38	S of Pt. Glass Penn	Juneau	Northern Southeast Inside
Stephens Pink	111	20	40	N of Pt. Glass Penn	Juneau	Northern Southeast Inside
Stephens Pink	111	21	46	Indian Ck Round Is	Juneau	Northern Southeast Inside
Stephens Pink	111	21	52	N of Bushy Island	Juneau	Northern Southeast Inside
Stephens Pink	111	21	53	NE of Bushy Island	Juneau	Northern Southeast Inside
Stephens Pink	111	21	95	Sanford Cove S Head	Juneau	Northern Southeast Inside

-continued-

STOCK	DISTRICT	SUBDISTRICT	STREAM CODE	STREAM	AREA OFFICE	SUBREGION
Stephens Pink	111	31	30	3 rd S of Twin Point	Juneau	Northern Southeast Inside
Stephens Pink	111	31	36	1 st S of Twin Point	Juneau	Northern Southeast Inside
Stephens Pink	111	31	40	Twin Point Creek	Juneau	Northern Southeast Inside
Stephens Pink	111	32	80	Turner Lake Outlet	Juneau	Northern Southeast Inside
Stephens Pink	111	32	99	Slocum Creek	Juneau	Northern Southeast Inside
Stephens Pink	111	33	10	Prospect Ck Speel	Juneau	Northern Southeast Inside
Stephens Pink	111	35	20	Sweetheart Creek	Juneau	Northern Southeast Inside
Stephens Pink	111	35	32	Gilbert Creek	Juneau	Northern Southeast Inside
Stephens Pink	111	40	65	Middle Point Creek	Juneau	Northern Southeast Inside
Stephens Pink	111	40	70	Hilda Ck Douglas Is	Juneau	Northern Southeast Inside
Stephens Pink	111	41	5	Admiralty Creek	Juneau	Northern Southeast Inside
Stephens Pink	111	41	12	1 st W Admiralty Ck	Juneau	Northern Southeast Inside
Stephens Pink	111	41	16	West Cabin Creek	Juneau	Northern Southeast Inside
Stephens Pink	111	41	17	Cabin Creek	Juneau	Northern Southeast Inside
Stephens Pink	111	41	18	Fowler Ck Young Bay	Juneau	Northern Southeast Inside
Stephens Pink	111	50	80	Bear Ck Stephens Pas	Juneau	Northern Southeast Inside
Stephens Pink	111	50	88	Barlow Cove Head	Juneau	Northern Southeast Inside
Stephens Pink	111	50	90	West Hd Barlow Cove	Juneau	Northern Southeast Inside
Stephens Pink	111	50	92	Barlow Cove W Shore	Juneau	Northern Southeast Inside
Stephens Pink	111	90	5	Limestone Inlet	Juneau	Northern Southeast Inside
Freshwater Bay Pink	112	12	5	White Rock Creek	Juneau	Northern Southeast Inside
Freshwater Bay Pink	112	12	8	N of White Rock	Juneau	Northern Southeast Inside
Freshwater Bay Pink	112	12	34	N of Basket Bay	Juneau	Northern Southeast Inside
Freshwater Bay Pink	112	12	46	Gypsum Creek	Juneau	Northern Southeast Inside
Freshwater Bay Pink	112	12	50	Wukuklook Creek	Juneau	Northern Southeast Inside
Freshwater Bay Pink	112	13	6	Iyouktug Creek	Juneau	Northern Southeast Inside
Lower Lynn Canal Pink	112	15	44	South Sisters Creek	Juneau	Northern Southeast Inside
Lower Lynn Canal Pink	112	15	54	Willie's Creek	Juneau	Northern Southeast Inside
Lower Lynn Canal Pink	112	15	62	Robinson Creek	Juneau	Northern Southeast Inside
W Admiralty Pink	112	16	30	Wheeler Creek	Juneau	Northern Southeast Inside
W Admiralty Pink	112	17	12	Lake Kathleen Creek	Juneau	Northern Southeast Inside
W Admiralty Pink	112	17	16	Ward Creek	Juneau	Northern Southeast Inside
W Admiralty Pink	112	17	25	Lake Florence Creek	Juneau	Northern Southeast Inside
W Admiralty Pink	112	17	30	Fishery Creek	Juneau	Northern Southeast Inside

-continued-

STOCK	DISTRICT	SUBDISTRICT	STREAM CODE	STREAM	AREA OFFICE	SUBREGION
W Admiralty Pink	112	17	40	Marble Creek	Juneau	Northern Southeast Inside
W Admiralty Pink	112	17	50	Thayer Creek	Juneau	Northern Southeast Inside
SW Admiralty Pink	112	19	10	Wilson River	Juneau	Northern Southeast Inside
SW Admiralty Pink	112	19	15	Wilson Cove SE	Juneau	Northern Southeast Inside
Kelp Bay Pink	112	21	5	Clear River Kelp Bay	Sitka	Northern Southeast Inside
Kelp Bay Pink	112	21	6	Ralphs Creek-Kelp B	Sitka	Northern Southeast Inside
Kelp Bay Pink	112	21	8	Kelp Bay M Arm Head	Sitka	Northern Southeast Inside
Kelp Bay Pink	112	21	9	Kelp Bay Portage Arm	Sitka	Northern Southeast Inside
Tenakee Pink	112	41	1	Passage Point Creek	Juneau	Northern Southeast Inside
Tenakee Pink	112	41	10	Trap Bay East	Juneau	Northern Southeast Inside
Tenakee Pink	112	42	8	Indian River-Tenakee	Juneau	Northern Southeast Inside
Tenakee Pink	112	42	16	Corner Bay Creek	Juneau	Northern Southeast Inside
Tenakee Pink	112	42	25	Kadashan Creek	Juneau	Northern Southeast Inside
Tenakee Pink	112	42	32	Rudy Creek	Juneau	Northern Southeast Inside
Tenakee Pink	112	43	2	Crab Bay South Side	Juneau	Northern Southeast Inside
Tenakee Pink	112	43	12	Crab Bay Head	Juneau	Northern Southeast Inside
Tenakee Pink	112	44	10	Saltery Bay Head	Juneau	Northern Southeast Inside
Tenakee Pink	112	45	32	Eaton Creek	Juneau	Northern Southeast Inside
Tenakee Pink	112	45	36	E of Seal Bay Ent	Juneau	Northern Southeast Inside
Tenakee Pink	112	46	4	E Side Seal Bay	Juneau	Northern Southeast Inside
Tenakee Pink	112	46	9	Seal Bay Head	Juneau	Northern Southeast Inside
Tenakee Pink	112	47	10	Long Bay Head	Juneau	Northern Southeast Inside
Tenakee Pink	112	48	15	Big Goose Creek	Juneau	Northern Southeast Inside
Tenakee Pink	112	48	19	Little Goose Creek	Juneau	Northern Southeast Inside
Tenakee Pink	112	48	23	West Bay Head Creek	Juneau	Northern Southeast Inside
Tenakee Pink	112	48	35	Tenakee Inlet Head	Juneau	Northern Southeast Inside
Freshwater Bay Pink	112	50	5	Wachusett Creek	Juneau	Northern Southeast Inside
Freshwater Bay Pink	112	50	20	Kennel Creek	Juneau	Northern Southeast Inside
Freshwater Bay Pink	112	50	30	Freshwater Creek	Juneau	Northern Southeast Inside
Freshwater Bay Pink	112	50	32	Bay Head Creek	Juneau	Northern Southeast Inside
Freshwater Bay Pink	112	50	34	Freshwater Bay NE Hd	Juneau	Northern Southeast Inside
Freshwater Bay Pink	112	50	38	Seal Ck Freshwater B	Juneau	Northern Southeast Inside
Lower Lynn Canal Pink	112	61	6	Howard Bay West Side	Juneau	Northern Southeast Inside
Lower Lynn Canal Pink	112	61	8	Howard Bay NW Side	Juneau	Northern Southeast Inside

-continued-

STOCK	DISTRICT	SUBDISTRICT	STREAM CODE	STREAM	AREA OFFICE	SUBREGION
Lower Lynn Canal Pink	112	61	10	Point Howard Creek	Juneau	Northern Southeast Inside
W Admiralty Pink	112	63	12	Funter Bay S Side	Juneau	Northern Southeast Inside
W Admiralty Pink	112	63	13	Funter Creek	Juneau	Northern Southeast Inside
W Admiralty Pink	112	65	12	Jimmy Green Creek	Juneau	Northern Southeast Inside
W Admiralty Pink	112	65	14	Hawk Inlet Head NW	Juneau	Northern Southeast Inside
W Admiralty Pink	112	65	15	Hawk Inlet Head	Juneau	Northern Southeast Inside
W Admiralty Pink	112	65	24	Greens Creek	Juneau	Northern Southeast Inside
W Admiralty Pink	112	65	28	Piledriver Cove Crk	Juneau	Northern Southeast Inside
SW Admiralty Pink	112	67	35	Hasselborg River	Juneau	Northern Southeast Inside
SW Admiralty Pink	112	67	40	Jims Creek	Juneau	Northern Southeast Inside
SW Admiralty Pink	112	67	60	Kanalku Lake Creek	Juneau	Northern Southeast Inside
SW Admiralty Pink	112	67	80	Favorite Creek	Juneau	Northern Southeast Inside
SW Admiralty Pink	112	71	24	Narrows Creek	Juneau	Northern Southeast Inside
SW Admiralty Pink	112	72	11	Weir Ck N Arm Hood B	Juneau	Northern Southeast Inside
SW Admiralty Pink	112	72	12	Hood Bay N Arm E Hd	Juneau	Northern Southeast Inside
SW Admiralty Pink	112	73	15	Hood Bay S Arm N Sd	Juneau	Northern Southeast Inside
SW Admiralty Pink	112	73	17	Hood Bay s Arm Hd N	Juneau	Northern Southeast Inside
SW Admiralty Pink	112	73	20	Hood Bay S Arm Head	Juneau	Northern Southeast Inside
SW Admiralty Pink	112	73	24	Weir Ck S Arm Hood B	Juneau	Northern Southeast Inside
SW Admiralty Pink	112	73	30	1 st NW of Weir Creek	Juneau	Northern Southeast Inside
SW Admiralty Pink	112	80	28	Chaik Bay Creek	Juneau	Northern Southeast Inside
SW Admiralty Pink	112	90	14	Whitewater Creek	Juneau	Northern Southeast Inside
SW Admiralty Pink	112	90	16	Whitewater S Arm Hd	Juneau	Northern Southeast Inside
Whale Bay Pink	113	22	6	Whale Bay Sm Arm NW	Sitka	Northern Southeast Outside
Whale Bay Pink	113	22	8	Politofski Lk Outlet	Sitka	Northern Southeast Outside
Whale Bay Pink	113	22	15	Whale Bay Grt Arm Hd	Sitka	Northern Southeast Outside
Whale Bay Pink	113	22	18	Whale Bay Grt Arm E	Sitka	Northern Southeast Outside
W Crawfish Pink	113	32	4	W Crawfish N Arm NE	Sitka	Northern Southeast Outside
W Crawfish Pink	113	32	5	W Crawfish NE Arm Hd	Sitka	Northern Southeast Outside
Sitka Sound Pink	113	40	15	Starrigavin Creek	Sitka	Northern Southeast Outside
Sitka Sound Pink	113	40	17	Granite Creek	Sitka	Northern Southeast Outside
Sitka Sound Pink	113	41	32	Salmon Lake Stream	Sitka	Northern Southeast Outside
Sitka Sound Pink	113	41	34	Camp Coogan	Sitka	Northern Southeast Outside
Sitka Sound Pink	113	41	42	Kizhuchia Ck Red Bay	Sitka	Northern Southeast Outside

-continued-

STOCK	DISTRICT	SUBDISTRICT	STREAM CODE	STREAM	AREA OFFICE	SUBREGION
Sitka Sound Pink	113	41	13B	Eagle River	Sitka	Northern Southeast Outside
Sitka Sound Pink	113	42	2	Limit Ck Nakwasina P	Sitka	Northern Southeast Outside
Sitka Sound Pink	113	42	3	Noxen Creek	Sitka	Northern Southeast Outside
Sitka Sound Pink	113	43	2	Nakwasina River	Sitka	Northern Southeast Outside
Sitka Sound Pink	113	43	5	Liza Ck NakwasinaSnd	Sitka	Northern Southeast Outside
Sitka Sound Pink	113	44	3	Katlian River	Sitka	Northern Southeast Outside
Sitka Sound Pink	113	44	5	Katlian Bay S. Fork	Sitka	Northern Southeast Outside
Hoonah Sound Pink	113	51	1	Broad Creek	Sitka	Northern Southeast Inside
Hoonah Sound Pink	113	51	2	Oly Creek	Sitka	Northern Southeast Inside
Hoonah Sound Pink	113	51	4	False Island Creek	Sitka	Northern Southeast Inside
Hoonah Sound Pink	113	52	4	Hanus Bay	Sitka	Northern Southeast Inside
Hoonah Sound Pink	113	53	3	Saook Bay West Head	Sitka	Northern Southeast Inside
Hoonah Sound Pink	113	54	5	Appleton Cove W Head	Sitka	Northern Southeast Inside
Hoonah Sound Pink	113	54	7	Rodman Creek	Sitka	Northern Southeast Inside
Hoonah Sound Pink	113	55	1	Finger River	Sitka	Northern Southeast Inside
Hoonah Sound Pink	113	55	5	West Broad Creek	Sitka	Northern Southeast Inside
Hoonah Sound Pink	113	56	2	Ushk Bay SW End	Sitka	Northern Southeast Inside
Hoonah Sound Pink	113	56	3	Ushk Bay W End	Sitka	Northern Southeast Inside
Hoonah Sound Pink	113	57	1	Fick Cove Head	Sitka	Northern Southeast Inside
Hoonah Sound Pink	113	57	2	Hoonah Snd S Arm SW	Sitka	Northern Southeast Inside
Hoonah Sound Pink	113	57	5	Patterson Bay W Head	Sitka	Northern Southeast Inside
Hoonah Sound Pink	113	57	9	Hoonah Snd S Arm Hd	Sitka	Northern Southeast Inside
Hoonah Sound Pink	113	58	2	Hoonah Snd N Arm Wst	Sitka	Northern Southeast Inside
Hoonah Sound Pink	113	58	3	Granite Creek N Arm	Sitka	Northern Southeast Inside
Hoonah Sound Pink	113	58	4	Hoonah Sound N Head	Sitka	Northern Southeast Inside
Hoonah Sound Pink	113	59	4	Sitkoh Lake Creek	Sitka	Northern Southeast Inside
Hoonah Sound Pink	113	59	7	Sitkoh Bay Head	Sitka	Northern Southeast Inside
Salisbury Sound Pink	113	62	6	Sukoi Inlet W Side	Sitka	Northern Southeast Outside
Salisbury Sound Pink	113	62	8	Sinitsin Cove Head	Sitka	Northern Southeast Outside
Salisbury Sound Pink	113	62	12	Sukoi Inlet SE Head	Sitka	Northern Southeast Outside
Salisbury Sound Pink	113	64	1	Deep Bay Head	Sitka	Northern Southeast Outside
Salisbury Sound Pink	113	65	4	Fish Bay Creek	Sitka	Northern Southeast Outside
Salisbury Sound Pink	113	65	5	Fish Bay S Side Head	Sitka	Northern Southeast Outside
Salisbury Sound Pink	113	66	3	Marine Cove	Sitka	Northern Southeast Outside

-continued-

STOCK	DISTRICT	SUBDISTRICT	STREAM CODE	STREAM	AREA OFFICE	SUBREGION
Salisbury Sound Pink	113	66	6	St. John Baptist Hd	Sitka	Northern Southeast Outside
Slocum Arm Pink	113	72	4	Rust Crk Sister Lake	Sitka	Northern Southeast Outside
Slocum Arm Pink	113	72	5	Sister Lake SE Head	Sitka	Northern Southeast Outside
Slocum Arm Pink	113	73	3	Lake Stream Ford Arm	Sitka	Northern Southeast Outside
Slocum Arm Pink	113	73	4	South Ford Arm	Sitka	Northern Southeast Outside
Slocum Arm Pink	113	73	6	Waterfall Cove Creek	Sitka	Northern Southeast Outside
Slocum Arm Pink	113	73	10	Slocum Arm Head	Sitka	Northern Southeast Outside
Slocum Arm Pink	113	73	12	Khaz Creek	Sitka	Northern Southeast Outside
Portlock Pink	113	81	3	Goulding Harbor Head	Sitka	Northern Southeast Outside
Portlock Pink	113	81	10	Black Bay North Head	Sitka	Northern Southeast Outside
Portlock Pink	113	81	11	Black River	Sitka	Northern Southeast Outside
Lisianski Pink	113	95	3	Pelican Creek	Sitka	Northern Southeast Outside
Lisianski Pink	113	95	4	Phonograph Ck Lis In	Sitka	Northern Southeast Outside
Lisianski Pink	113	95	6	Lisianski River	Sitka	Northern Southeast Outside
Lisianski Pink	113	95	7	Steelhead R SW Lis I	Sitka	Northern Southeast Outside
Lisianski Pink	113	96	2	Saltery Rvr Stag Bay	Sitka	Northern Southeast Outside
Homeshore Pink	114	23	22	Kahtaheena River	Juneau	Northern Southeast Inside
Homeshore Pink	114	23	24	East of Kahtaheena	Juneau	Northern Southeast Inside
N Chichagof Pink	114	23	35	Chicken Ck Icy Strts	Juneau	Northern Southeast Inside
N Chichagof Pink	114	23	70	Mud Bay River	Juneau	Northern Southeast Inside
N Chichagof Pink	114	23	80	Goose Creek	Juneau	Northern Southeast Inside
Homeshore Pink	114	25	5	Windy Creek	Juneau	Northern Southeast Inside
Homeshore Pink	114	25	10	Homeshore Creek	Juneau	Northern Southeast Inside
Homeshore Pink	114	25	12	East Homeshore Creek	Juneau	Northern Southeast Inside
Homeshore Pink	114	25	18	Humpy Creek	Juneau	Northern Southeast Inside
Homeshore Pink	114	25	35	West Swanson Creek	Juneau	Northern Southeast Inside
N Chichagof Pink	114	27	12	Whitestone East Side	Juneau	Northern Southeast Inside
N Chichagof Pink	114	27	15	Suntaheen Creek	Juneau	Northern Southeast Inside
N Chichagof Pink	114	27	18	Whitestone Head	Juneau	Northern Southeast Inside
N Chichagof Pink	114	27	30	Spasski Creek	Juneau	Northern Southeast Inside
N Chichagof Pink	114	31	13	Game Creek	Juneau	Northern Southeast Inside
N Chichagof Pink	114	32	4	Seagull Creek	Juneau	Northern Southeast Inside
N Chichagof Pink	114	32	6	Bear Ck Midway Rocks	Juneau	Northern Southeast Inside
N Chichagof Pink	114	33	23	Neka River	Juneau	Northern Southeast Inside

-continued-

STOCK	DISTRICT	SUBDISTRICT	STREAM CODE	STREAM	AREA OFFICE	SUBREGION
N Chichagof Pink	114	34	10	Humpback Creek	Juneau	Northern Southeast Inside
N Chichagof Pink	114	40	23	Nip and Tuck Creek	Juneau	Northern Southeast Inside
N Chichagof Pink	114	40	25	Cabin Ck Idaho Inlet	Juneau	Northern Southeast Inside
N Chichagof Pink	114	40	35	Trail River	Juneau	Northern Southeast Inside
N Chichagof Pink	114	40	38	Marble Creek	Juneau	Northern Southeast Inside
N Chichagof Pink	114	50	10	Anchor Bite Creek	Juneau	Northern Southeast Inside
N Chichagof Pink	114	50	12	S Anchor Bite Creek	Juneau	Northern Southeast Inside
N Chichagof Pink	114	50	20	Althorp Creek	Juneau	Northern Southeast Inside
N Chichagof Pink	114	50	25	Humpie Ck Prt Althrp	Juneau	Northern Southeast Inside
N Chichagof Pink	114	50	30	Margret Ck P Althorp	Juneau	Northern Southeast Inside
Homeshore Pink	114	80	20	Excursion River	Juneau	Northern Southeast Inside
Homeshore Pink	114	80	45	Neva Creek	Juneau	Northern Southeast Inside
Homeshore Pink	114	80	50	Cabin Ck Excur Inlet	Juneau	Northern Southeast Inside
Upper Lynn Canal Pink	115	10	32	S of St. James Point	Juneau (Haines)	Northern Southeast Inside
Upper Lynn Canal Pink	115	10	42	St James Bay NW Side	Juneau (Haines)	Northern Southeast Inside
Upper Lynn Canal Pink	115	10	46	St. James River	Juneau (Haines)	Northern Southeast Inside
Upper Lynn Canal Pink	115	10	65	Beardslee River	Juneau (Haines)	Northern Southeast Inside
Upper Lynn Canal Pink	115	10	68	W Head N Wm Henry B	Juneau (Haines)	Northern Southeast Inside
Upper Lynn Canal Pink	115	10	80	Endicott River	Juneau (Haines)	Northern Southeast Inside
Upper Lynn Canal Pink	115	20	52	Sawmill Ck Berners B	Juneau (Haines)	Northern Southeast Inside
Upper Lynn Canal Pink	115	20	62	Cowee Ck Berners Bay	Juneau (Haines)	Northern Southeast Inside
Upper Lynn Canal Pink	115	31	38	Sullivan Creek	Juneau (Haines)	Northern Southeast Inside