

# **Fishery Management Plan for the Kodiak Area State-Waters Pacific Cod Season, 2023**

by

**Cassandra Whiteside**

---

December 2022

---

Alaska Department of Fish and Game

Division of Commercial Fisheries



## Symbols and Abbreviations

The following symbols and abbreviations, and others approved for the Système International d'Unités (SI), are used without definition in the following reports by the Divisions of Sport Fish and of Commercial Fisheries: Fishery Manuscripts, Fishery Data Series Reports, Fishery Management Reports, and Special Publications. All others, including deviations from definitions listed below, are noted in the text at first mention, as well as in the titles or footnotes of tables, and in figure or figure captions.

Weights and measures (metric)		General		Mathematics, statistics	
centimeter	cm	Alaska Administrative Code		all standard mathematical signs, symbols and abbreviations	
deciliter	dL		AAC		
gram	g	all commonly accepted abbreviations	e.g., Mr., Mrs., AM, PM, etc.	alternate hypothesis	H <sub>A</sub>
hectare	ha			base of natural logarithm	<i>e</i>
kilogram	kg			catch per unit effort	CPUE
kilometer	km	all commonly accepted professional titles	e.g., Dr., Ph.D., R.N., etc.	coefficient of variation	CV
liter	L			common test statistics	(F, t, $\chi^2$ , etc.)
meter	m	at	@	confidence interval	CI
milliliter	mL	compass directions:		correlation coefficient (multiple)	R
millimeter	mm	east	E	correlation coefficient (simple)	r
<b>Weights and measures (English)</b>		north	N	covariance	cov
cubic feet per second	ft <sup>3</sup> /s	south	S	degree (angular)	°
foot	ft	west	W	degrees of freedom	df
gallon	gal	copyright	©	expected value	<i>E</i>
inch	in	corporate suffixes:		greater than	>
mile	mi	Company	Co.	greater than or equal to	≥
nautical mile	nmi	Corporation	Corp.	harvest per unit effort	HPUE
ounce	oz	Incorporated	Inc.	less than	<
pound	lb	Limited	Ltd.	less than or equal to	≤
quart	qt	District of Columbia	D.C.	logarithm (natural)	ln
yard	yd	et alii (and others)	et al.	logarithm (base 10)	log
		et cetera (and so forth)	etc.	logarithm (specify base)	log <sub>2</sub> , etc.
<b>Time and temperature</b>		exempli gratia		minute (angular)	'
day	d	(for example)	e.g.	not significant	NS
degrees Celsius	°C	Federal Information Code	FIC	null hypothesis	H <sub>0</sub>
degrees Fahrenheit	°F	id est (that is)	i.e.	percent	%
degrees kelvin	K	latitude or longitude	lat or long	probability	P
hour	h	monetary symbols		probability of a type I error	
minute	min	(U.S.)	\$, ¢	(rejection of the null hypothesis when true)	$\alpha$
second	s	months (tables and figures): first three letters	Jan,...,Dec	probability of a type II error	
<b>Physics and chemistry</b>		registered trademark	®	(acceptance of the null hypothesis when false)	$\beta$
all atomic symbols		trademark	™	second (angular)	"
alternating current	AC	United States		standard deviation	SD
ampere	A	(adjective)	U.S.	standard error	SE
calorie	cal	United States of America (noun)	USA	variance	
direct current	DC	U.S.C.	United States Code	population sample	Var var
hertz	Hz				
horsepower	hp				
hydrogen ion activity (negative log of)	pH				
parts per million	ppm	U.S. state	use two-letter abbreviations		
parts per thousand	ppt, ‰		(e.g., AK, WA)		
volts	V				
watts	W				

***REGIONAL INFORMATION REPORT NO. 4K22-18***

**FISHERY MANAGEMENT PLAN FOR THE KODIAK AREA STATE-  
WATERS PACIFIC COD SEASON, 2023**

by

Cassandra Whiteside

Alaska Department of Fish and Game, Division of Commercial Fisheries, Kodiak

Alaska Department of Fish and Game  
Division of Commercial Fisheries  
351 Research Court  
Kodiak, AK 99615

December 2022

The Regional Information Report Series was established in 1987 and was redefined in 2007 to meet the Division of Commercial Fisheries regional need for publishing and archiving information such as area management plans, budgetary information, staff comments and opinions to Alaska Board of Fisheries proposals, interim or preliminary data and grant agency reports, special meeting or minor workshop results and other regional information not generally reported elsewhere. Reports in this series may contain raw data and preliminary results. Reports in this series receive varying degrees of regional, biometric and editorial review; information in this series may be subsequently finalized and published in a different department reporting series or in the formal literature. Please contact the author or the Division of Commercial Fisheries if in doubt of the level of review or preliminary nature of the data reported. Regional Information Reports are available through the Alaska State Library and on the Internet at: <http://www.adfg.alaska.gov/sf/publications/>.

Product names used in this publication are included for completeness and do not constitute product endorsement. The Alaska Department of Fish and Game does not endorse or recommend any specific company or their products.

*Cassandra Whiteside  
Alaska Department of Fish and Game, Division of Commercial Fisheries  
351 Research Court, Kodiak, AK 99615, USA*

*This document should be cited as follows:*

*Whiteside, C. 2022. Fishery management plan for the Kodiak Area state-waters Pacific cod season, 2023. Alaska Department of Fish and Game, Division of Commercial Fisheries, Regional Information Report No. 4K22-18, Kodiak.*

The Alaska Department of Fish and Game (ADF&G) administers all programs and activities free from discrimination based on race, color, national origin, age, sex, religion, marital status, pregnancy, parenthood, or disability. The department administers all programs and activities in compliance with Title VI of the Civil Rights Act of 1964, Section 504 of the Rehabilitation Act of 1973, Title II of the Americans with Disabilities Act (ADA) of 1990, the Age Discrimination Act of 1975, and Title IX of the Education Amendments of 1972.

**If you believe you have been discriminated against in any program, activity, or facility please write:**

ADF&G ADA Coordinator, P.O. Box 115526, Juneau, AK 99811-5526

U.S. Fish and Wildlife Service, 4401 N. Fairfax Drive, MS 2042, Arlington, VA 22203

Office of Equal Opportunity, U.S. Department of the Interior, 1849 C Street NW MS 5230, Washington DC 20240

**The department's ADA Coordinator can be reached via phone at the following numbers:**

(VOICE) 907-465-6077, (Statewide Telecommunication Device for the Deaf) 1-800-478-3648,

(Juneau TDD) 907-465-3646, or (FAX) 907-465-6078

**For information on alternative formats and questions on this publication, please contact:**

ADF&G, Division of Sport Fish, Research and Technical Services, 333 Raspberry Rd, Anchorage AK 99518 (907) 267-2375

# TABLE OF CONTENTS

	Page
LIST OF FIGURES .....	ii
LIST OF APPENDICES .....	ii
ABSTRACT .....	1
INTRODUCTION .....	1
Area Description.....	1
Overview .....	1
PARALLEL PACIFIC COD FISHERY.....	1
STATE-WATERS PACIFIC COD FISHERY .....	2
Overview .....	2
2023 Guideline Harvest Level.....	2
Season Dates and Guideline Harvest Level Rollover Provisions .....	2
Pot Gear .....	2
Jig Gear.....	3
Guideline Harvest Level Rollover Provisions .....	3
Vessel Registration Requirements .....	3
Legal Gear, Gear Limits, and Pot Buoy Tags.....	4
Pot Buoy Marking Requirements .....	4
Pot Storage and Gear Configuration.....	4
Landing Requirements.....	5
Bycatch.....	5
Catch Reporting.....	5
Concurrent Fisheries.....	6
Inseason Announcements .....	6
FIGURES .....	7
APPENDIX A. SUMMARY OF DATES AND STATE-WATERS GUIDELINE HARVEST LEVELS .....	11
APPENDIX B. LIST OF FISHERY CONTACTS BY AGENCY AND LOCATION .....	15

## LIST OF FIGURES

Figure	Page
1. Kodiak Management Area for state-waters Pacific cod. ....	8
2. Steller sea lion closure areas for longline and pot gear during the parallel Pacific cod season in the Kodiak Management Area.....	9

## LIST OF APPENDICES

Appendix	Page
A1. Summary of Westward Region parallel and state-waters Pacific cod season dates and state-waters guideline harvest levels for pot gear, 2023.....	12
A2. Summary of Westward Region parallel and state-waters Pacific cod season dates and state-waters guideline harvest levels for jig gear, 2023.....	13
B1. List of fishery contacts by agency and location.....	16

# ABSTRACT

This document provides an overview of regulations effective for the 2023 Kodiak Area state-waters Pacific cod *Gadus macrocephalus* season. The Kodiak Area state-waters Pacific cod season for pot gear is scheduled to open 7 days after the closure of the Central Gulf of Alaska federal/parallel Pacific cod pot gear sector A season. The Kodiak Area state-waters Pacific cod season for jig gear is scheduled to open January 1. Legal gear for the state-waters Pacific cod season is limited to pot, mechanical jigging machine, and hand troll gear. No more than 60 groundfish pots or 6 mechanical jigging machines may be operated from a vessel. The 2023 Kodiak Area state-waters season Pacific cod guideline harvest level (GHL) is 4,086,777 pounds; pot and jig vessels are each allocated 50% of the total GHL (2,043,389 pounds).

Keywords: Pacific cod, *Gadus macrocephalus*, Kodiak Area, management plan, regulations, jigging machine, pot, guideline harvest level, parallel season, state-waters season

# INTRODUCTION

## AREA DESCRIPTION

The Kodiak groundfish registration area consists of all waters south of the latitude of Cape Douglas (lat 58°51.10'N), west of long 149°W, and east of a line extending south from the Alaska Peninsula near Kilokak Rocks (long 156°20.22'W; Figure 1).

## OVERVIEW

Two distinct fisheries for Pacific cod *Gadus macrocephalus* occur within state waters (0–3 nmi) of the Kodiak Area. The parallel fishery is prosecuted concurrent to the federal Central Gulf of Alaska (CGOA) Pacific cod fishery and is managed by adopting most National Marine Fisheries Service (NMFS) regulations and management actions. The Kodiak Area state-waters Pacific cod fishery is prosecuted independent of the federal/parallel fishery and is managed exclusively by the Alaska Department of Fish and Game (ADF&G) under guidelines developed by the Alaska Board of Fisheries.

## PARALLEL PACIFIC COD FISHERY

When the federal (3–200 nmi) CGOA area is open to directed Pacific cod fishing, the State of Alaska opens a concurrent parallel fishery inside state waters (0–3 nmi). Unless specifically prohibited, the same gear types in the federal Pacific cod fishery are allowed in the parallel fishery, although nonpelagic trawl vessels are prohibited from fishing inside all state waters in the Kodiak Area (5 AAC 39.164(b)(1)).

Except for vessels using jig gear, all vessels that participate in the parallel Pacific cod fishery must have an activated vessel monitoring system (VMS; 5 AAC 28.087(c)). Steller sea lion *Eumetopias jubatus* restrictions during the parallel fishery match federal management measures, except for the Cape Barnabas haulout, which is open to pot and jig vessels during the parallel season (5 AAC 28.087; Figure 2).

Vessels that fish exclusively in the Kodiak Area parallel Pacific cod fishery are not required to possess a federal fishing permit (FFP) or a Pacific cod gear endorsement administered through the federal License Limitation Program (LLP). Vessels with an FFP should be aware of federal regulations regarding observer coverage, catch reporting, gear limits, and LLP requirements prior to participating in the Kodiak Area parallel Pacific cod fishery.

The parallel Pacific cod fishery is divided into 2 seasons: the A season and B season. The parallel Pacific cod A season opens January 1 for pot and longline gear sectors and 48 hours after the closure of the state-waters jig gear season for the jig gear sector. Parallel Pacific cod seasons for the pot, longline, and jig sectors close when their respective sector harvest allocations are achieved. The parallel jig gear sector B season opens June 10 or later depending on inseason assessment of the state-waters jig gear fishery; the parallel B season for all other gear sectors opens September 1. Pacific cod harvested during the parallel season are deducted from the federal gear-specific sector harvest allocation. Parallel Pacific cod seasons for the pot, jig, and longline gear sectors close when their respective sector harvest allocations are achieved. A summary of federal/parallel season dates is located in Appendices A1 and A2.

For additional information regarding federal Pacific cod regulations and harvest updates, contact NMFS Sustainable Fisheries Division (1-800-304-4846 #3), NMFS Office of Law Enforcement (907-486-3298), or the NMFS Observer Program (206-526-4195). For other information regarding the parallel fishery, contact ADF&G in Kodiak (907-486-1840; Appendix B1).

## **STATE-WATERS PACIFIC COD FISHERY**

### **OVERVIEW**

State-waters (0–3 nmi) Pacific cod fisheries are open access fisheries and are prosecuted independent of federal/parallel fisheries. Regulations pertaining to the Kodiak Area Pacific cod fisheries begin on page 54 of the *2022–2023 Statewide Commercial Groundfish Fishing Regulations* booklet.<sup>1</sup> ADF&G manages the Kodiak Area state-waters Pacific cod season in accordance with the *Kodiak Area Pacific Cod Management Plan* (5 AAC 28.467). The following is a summary of important regulations that will govern the 2023 season.

### **2023 GUIDELINE HARVEST LEVEL**

The guideline harvest level (GHL) for the Kodiak Area state-waters Pacific cod season is based on 12.5% of the CGOA Acceptable Biological Catch (ABC) for Pacific cod. The 2023 GHL for the Kodiak Area state-waters Pacific cod fishery is 4,086,777 pounds. By regulation, 50% of the total GHL (2,043,389 pounds) is allocated to pot gear vessels and 50% of the total GHL is allocated to jig gear vessels. Harvest by pot gear vessels greater than 58 feet in length is capped at 25% of the total GHL (1,021,694 pounds) unless harvest restrictions are removed under 5AAC 28.467(f).

### **SEASON DATES AND GUIDELINE HARVEST LEVEL ROLLOVER PROVISIONS**

#### **Pot Gear**

The 2023 Kodiak Area state-waters Pacific cod season for pot gear will open 7 days after closure of the CGOA federal/parallel Pacific cod pot gear sector A season. The state-waters season for pot gear will close when the Kodiak Area Pacific cod pot gear GHL allocation has been harvested.

If the state-waters pot gear GHL allocation has not been fully harvested by August 28, the state-waters pot gear season will close on August 28 to allow the CGOA parallel Pacific cod pot gear sector B season to open September 1. If the state-waters season is reopened after the federal CGOA

---

<sup>1</sup> [https://www.adfg.alaska.gov/static/regulations/fishregulations/pdfs/commercial/2022\\_2023\\_cf\\_groundfish\\_regs.pdf](https://www.adfg.alaska.gov/static/regulations/fishregulations/pdfs/commercial/2022_2023_cf_groundfish_regs.pdf) (accessed 11/22/2022)



pot sector B season closes, the harvest cap on pot vessels over 58 feet in length will be removed. A summary of state-waters and parallel pot gear season dates is located in Appendix A1.

## **Jig Gear**

The Kodiak Area state-waters (0–3 nmi) Pacific cod season for jig gear will open January 1 and will close when the mechanical jigging machine and hand troll gear allocation has been harvested. The CGOA parallel (0–3 nmi) jig gear sector A season will open 48 hours after the closure of the jig and hand troll gear state-waters season. A summary of state-waters and parallel jig gear season dates is located in Appendix A2.

The Kodiak Area state-waters jig gear season (0–3 nmi) will be prosecuted concurrent to the federal (3–200 nmi) CGOA jig gear sector Pacific cod season. Vessels that participate in the Kodiak Area state-waters season will be subject to state fisheries regulations, and all Pacific cod harvested will be deducted from the Kodiak Area state-waters jig gear GHL allocation. Vessels that participate in the federal CGOA jig gear sector season will be subject to federal fisheries regulations, and all Pacific cod harvested will be deducted from the federal CGOA jig gear sector harvest allocation.

## **Guideline Harvest Level Rollover Provisions**

If ADF&G determines that the Kodiak Area jig gear GHL allocation will not be taken by June 10, 50% of the remaining jig gear GHL allocation, as of March 25, may be taken by either pot or jig gear on or after April 1 at 12:00 noon. If the pot gear season reopens under this scenario, the harvest cap on pot gear vessels over 58 feet in length will not be in effect.

If a substantial portion of the total state-waters season GHL remains unharvested after September 1, gear limits may be removed to facilitate full harvest of the GHL. If state-waters GHL is remaining when the federal/parallel CGOA pot gear sector B season closes, the state-waters Pacific cod season may reopen to both pot and jig gear. Additionally, if projected harvest indicates the GHL will not be fully harvested by the regulatory season closure on December 31, the Kodiak Area may be designated as a nonexclusive registration area for Pacific cod after June 10 for jig gear vessels and after October 30 for pot gear vessels. All actions pertaining to rollover provisions will be announced by ADF&G advisory announcement. A summary of rollover provisions is located in Appendices A1 and A2.

## **VESSEL REGISTRATION REQUIREMENTS**

The Kodiak Area is an exclusive registration area for Pacific cod. Once a vessel is validly registered for the 2023 Kodiak Area state-waters Pacific cod season, that vessel may not be used to take Pacific cod in any other exclusive or superexclusive state-waters Pacific cod management area during 2023. Conversely, a vessel validly registered for an exclusive or superexclusive state-waters Pacific cod season outside of the Kodiak Area may not participate in the 2023 Kodiak Area state-waters Pacific cod season. If the Kodiak Area has been designated as a nonexclusive registration area by emergency order, a vessel validly registered for an exclusive state-waters Pacific cod season outside of the Kodiak Area may register to participate in Kodiak Area state-waters Pacific cod season. The Kodiak Area exclusive registration requirements do not apply to any parallel Pacific cod fishery. A 2023 Commercial Fisheries Entry Commission (CFEC) interim-use miscellaneous finfish permit card for the appropriate gear type must be obtained prior to registration. Contact information is provided in Appendix B1.

Tender vessel operators must obtain a tender vessel registration for the state-waters Pacific cod season. Tender operators may target Pacific cod with either pot or jig gear while operating as a tender vessel. Separate fish tickets must be completed for fish landed by the tender vessel and for fish taken from other fishing vessels. Tender vessels must use the tLandings application for all groundfish delivered to that tender (5 AAC 39.130(b)).

## **LEGAL GEAR, GEAR LIMITS, AND POT BUOY TAGS**

Pot, mechanical jigging machine, and hand troll gear are the only legal gear types during the state-waters Pacific cod fishery. Vessels may not use pot and jig gear at the same time; however, vessel operators may change gear registration by contacting the Kodiak ADF&G office (Appendix B1).

During the state-waters season, groundfish pots of any size may be used to take Pacific cod, although individual tunnel eye openings on pot gear may not exceed 36 inches in perimeter. All pots must be equipped with a biodegradable escape mechanism (5 AAC 39.145). The biodegradable escape mechanism is an opening 18 inches or greater in length placed within 6 inches of the bottom of the pot and secured closed by a single length of untreated, 100% cotton twine no larger than 30 thread count. No more than 60 groundfish pots may be operated from a vessel unless the pot limit has been rescinded by emergency order after September 1.

Buoy tags are required for pot gear when the 60-pot limit is in effect. Tags must be placed on the main or trailer buoy, and buoy tags can be purchased at a cost of \$1.50 per tag at the ADF&G office in Kodiak or via phone or fax (Appendix B1). After purchase, buoy tags may be mailed through the U.S. Postal Service. A valid 2023 CFEC interim-use miscellaneous finfish permit card for pot gear is required to receive tags. If buoy tags are lost during the season, replacement tags may be obtained by contacting ADF&G in Kodiak. The vessel owner, operator, or agent must complete and submit an affidavit form to ADF&G that details the unique number of each lost tag. Pots with lost tags may remain in the water, but those pots must be secured open with bait and bait containers removed until replacement tags are attached.

Vessels using mechanical jigging machines are restricted to operating no more than 6 machines unless the gear limit has been rescinded by ADF&G after September 1. Each of the 6 permissible lines may have no more than 30 hooks. Jig gear vessels are limited to a total of 500 hooks, in the aggregate, on board the vessel. There are no limits on the amount of hand troll gear that may be operated from a vessel. Jig gear vessel operators may use both hand troll and mechanical jigging gear at the same time; however, separate CFEC permit cards and fish tickets are required for each gear type at the time of landing.

## **POT BUOY MARKING REQUIREMENTS**

Buoys attached to groundfish pots must be marked with the permanent ADF&G number of the vessel operating that gear (5 AAC 28.050 and 5 AAC 28.430(b)). The buoy containing the permanent ADF&G number may not be marked with any additional numbers; however, symbols and letters are acceptable. Trailer buoys used to mark ownership or string sequence may be marked with any desired numbers, symbols, or letters.

## **POT STORAGE AND GEAR CONFIGURATION**

All pot gear must be open and unbaited at the time of a parallel or state-waters pot gear season closure. Open and unbaited pots may be stored at any depth for a maximum of 7 days following

the closure date. After 7 days, pots must be removed from the water or stored open and unbaited in waters 25 fathoms or less.

When the state-waters season opens, the 60-pot limit is in effect. During the 7 days after the state-waters season opening, a vessel may store or transport pots in excess of the 60-pot limit only if those pots are stored open and unbaited in waters 25 fathoms or less or being transported onboard a vessel. After the 7-day period, registered vessels may not operate more than the maximum allowable 60 pots for the remainder of the state-waters season. Following closure of the state-waters season, vessel operators may not stack out or move gear into storage while Pacific cod is on board the vessel (5 AAC 28.070(c)(1)).

Contact NMFS Enforcement regarding gear storage in federal waters (Appendix B1).

## **LANDING REQUIREMENTS**

Vessels participating in the state-waters Pacific cod season are required to deliver their catch within 48 hours after a closure unless 1) cod were harvested as allowable bycatch in another directed fishery, or 2) the vessel is delayed due to extraordinary circumstances and the vessel operator has contacted an ADF&G representative within 48 hours following the closure and has been granted additional time to reach the port of landing (5 AAC 28.581).

## **BYCATCH**

In state waters (0–3 nmi), ADF&G adopts the NMFS maximum retainable bycatch percentages applicable in federal waters (3–200 nmi) for groundfish species that are not actively managed by the State of Alaska. Federal retainable bycatch status is subject to change and may differ between species. Contact NMFS Enforcement in Kodiak for current bycatch percentages and status (Appendix B1).

While targeting Pacific cod, vessels using pot gear may retain lingcod *Ophiodon elongatus*, black rockfish *Sebastes melanops*, and dark rockfish *S. ciliatus* up to 5% by weight of Pacific cod onboard the vessel. Vessels using jig gear may retain lingcod, black rockfish, and dark rockfish up to 20% by weight of Pacific cod onboard the vessel, unless modified by emergency order. Jig vessels may not simultaneously target black rockfish and Pacific cod at the same time in the Kodiak Area.

For both gear types, lingcod may only be retained from July 1 to December 31, and all retained lingcod must be 35 inches or greater in length from tip of snout to tip of tail. Octopus may be retained as bycatch up to 20% by weight of Pacific cod onboard the vessel and must be landed on the same miscellaneous finfish card used to deliver Pacific cod (5 AAC 38.417(2)). Contact the ADF&G office in Kodiak (907-486-1840) regarding retainable bycatch percentages for state-managed species.

## **CATCH REPORTING**

ADF&G will manage the Kodiak Area state-waters Pacific cod pot gear season using inseason catch reports provided by vessel operators. Vessel operators using pot gear are encouraged to make daily reports of the harvest location, number of pot lifts, and pounds of Pacific cod retained in the previous 24-hour period (midnight to midnight). Inseason catch reports allow ADF&G to consider how changes in effort, fleet behavior, tides, and weather influence harvest rates. Catch reports will be taken by satellite dispatch (0715), phone (907-486-1840), text/inReach/WhatsApp (907-512-

5841), or email ([nathaniel.nichols@alaska.gov](mailto:nathaniel.nichols@alaska.gov)). Reporting worksheets will be issued to vessel operators during registration.

Reports taken by dispatch will occur between 9:00 AM and 10:00 AM daily.

## **CONCURRENT FISHERIES**

When the Kodiak Area state-waters and CGOA federal Pacific cod seasons are open concurrently for the same gear type:

- vessels may not simultaneously participate in a Kodiak Area state-waters season and any other Pacific cod season;
- vessel operators registered for a state-waters season must invalidate their ADF&G Kodiak Area state-waters Pacific cod registration prior to participating in a federal Pacific cod season;
- vessel operators participating in a federal Pacific cod season must register with ADF&G prior to participating in the Kodiak Area state-waters Pacific cod season;
- all Pacific cod must be delivered prior to validating or invalidating a Kodiak state-waters Pacific cod registration; and
- vessel operators may validate or invalidate vessel registrations by contacting an ADF&G representative in Kodiak (907-486-1840) during normal state business hours (Monday–Friday, 8:00 AM to 4:30 PM).

## **INSEASON ANNOUNCEMENTS**

All actions pertaining to regulatory changes in the state-waters season will be communicated to the fleet by dispatch, distributed via the ADF&G advisory announcement email subscription service (<http://www.adfg.alaska.gov/index.cfm?adfg=cfnews.main>), and relayed through participating processors. ADF&G will make every effort to provide sufficient advance notice prior to a closure; however, the potential exists for a short advance notice closure.

A weekly harvest update will be distributed each Monday while the state-waters season is open. Weekly harvest updates are available on the ADF&G website at <http://www.adfg.alaska.gov/%20index.cfm?adfg=commercialbyareakodiak.groundfish#harvest> or from the ADF&G groundfish management office in Kodiak.

## **FIGURES**

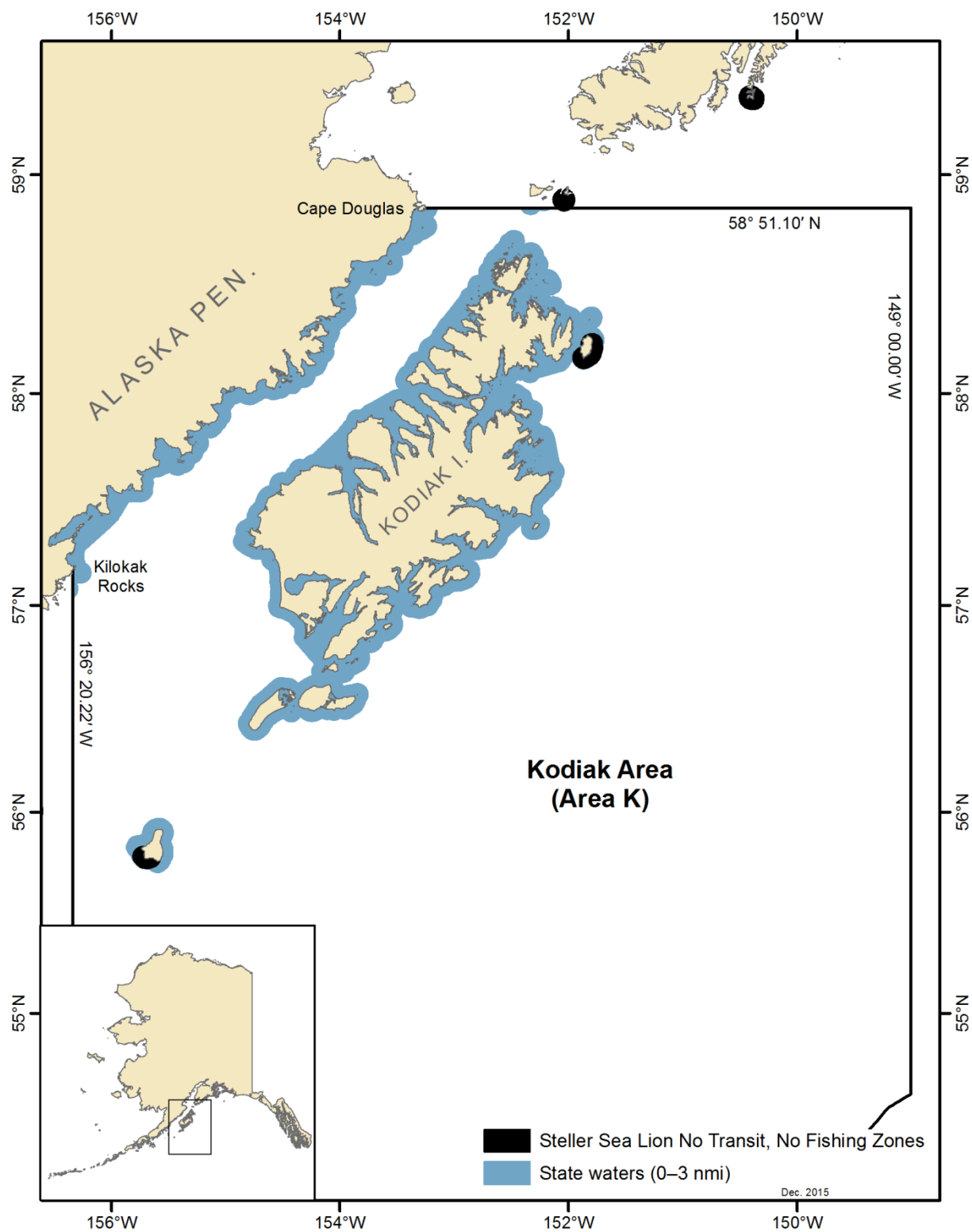


Figure 1.—Kodiak Area for state-waters Pacific cod.

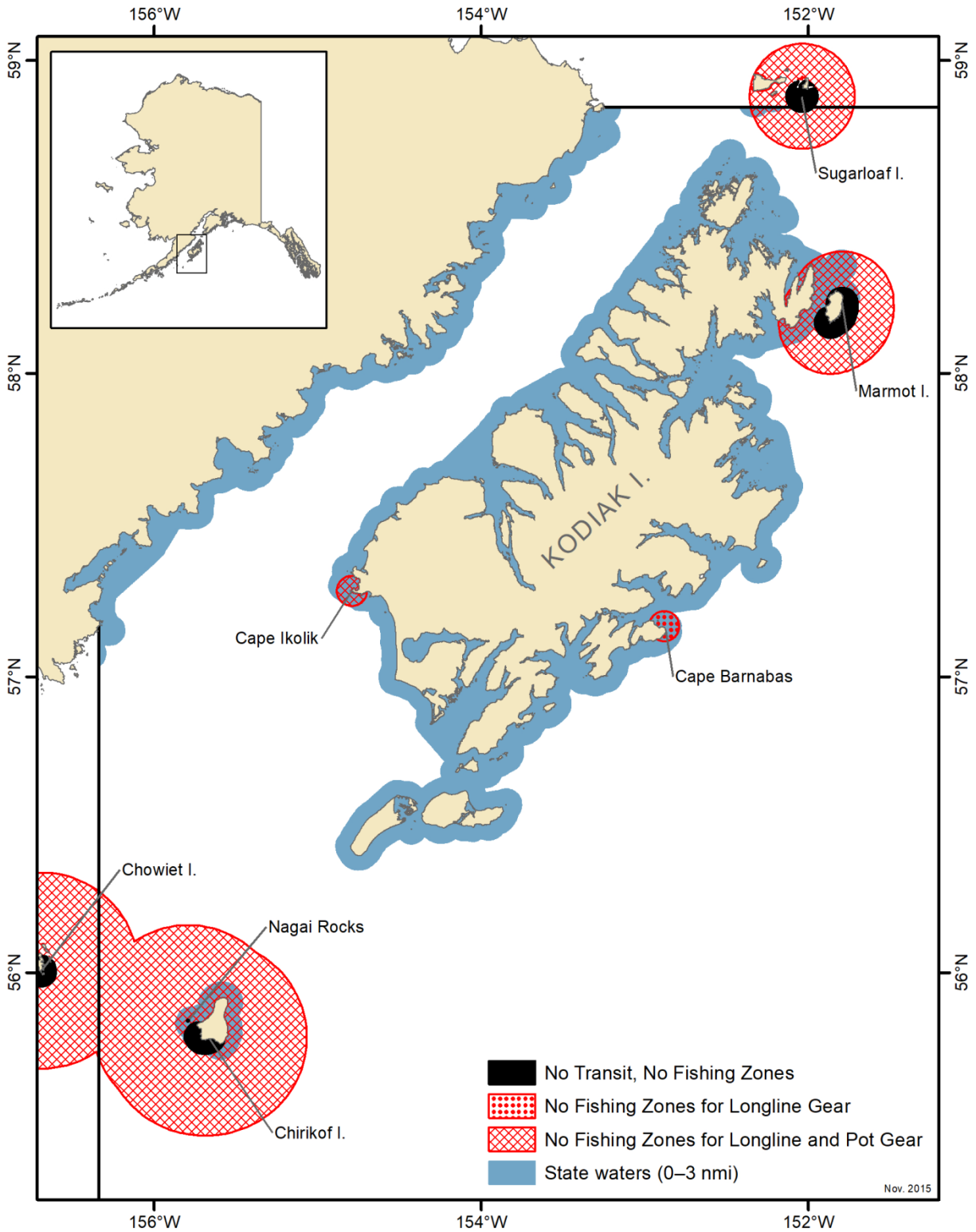


Figure 2.—Steller sea lion closure areas for longline and pot gear during the parallel Pacific cod season in the Kodiak Area.





**APPENDIX A. SUMMARY OF DATES AND  
STATE-WATERS GUIDELINE HARVEST LEVELS**

Appendix A1.—Summary of Westward Region parallel and state-waters Pacific cod season dates and state-waters guideline harvest levels for pot gear, 2023.

Pacific cod season dates	Kodiak area	Chignik area	South Alaska Peninsula area	Dutch Harbor Subdistrict	Aleutian Islands Subdistrict
Federal/parallel A season	January 1	January 1	January 1	January 1	January 1 (outside Adak Section)
State-waters GHL season	7 days after CGOA pot gear A-season closure	March 1 or 7 days after CGOA pot gear A-season closure, whichever is later	March 7 or 7 days after WGOA pot gear A-season closure, whichever is later	7 days after BSAI HAL/pot gear CV <60ft A-season closure	<u>Adak Section<sup>a</sup></u> January 1 for vessels ≤60 ft <u>Entire AIS<sup>a</sup></u> 4 days after BSAI pot gear CV >60 ft A-season closure for vessels ≤100 ft March 15 for vessels ≤125 ft
Federal/parallel B season	September 1	September 1 <sup>b</sup>	September 1	N/A <sup>c</sup>	N/A <sup>c</sup>
State-waters GHL rollover	After CGOA pot gear B-season closure <sup>d</sup>	August 14 <sup>c</sup>	After WGOA pot gear B-season closure	N/A	N/A
Vessel size limit <sup>e</sup>	N/A	October 30	October 30	October 1	N/A
Gear limit <sup>e</sup>	September 1	August 14	October 30	October 1	N/A
Exclusivity <sup>e</sup>	October 30	N/A	October 30	October 1	After DHS state-waters pot gear season closure <sup>a</sup>
State-waters pot gear GHL allocation	2,043,389	2,574,670	4,196,059	38,316,000	11,875,000 <sup>a,f</sup>

Notes: CGOA = Federal Central Gulf of Alaska Management Area; WGOA = Federal Western Gulf of Alaska Management Area; AIS = Aleutian Islands Subdistrict; DHS = Dutch Harbor Subdistrict; BSAI = Bering Sea Aleutian Islands; HAL = hook and line; CV = catcher vessel; GHL = Guideline Harvest Level

<sup>a</sup> Subject to change pending implementation of regulatory changes adopted during the October 2022 Alaska Board of Fisheries meeting.

<sup>b</sup> If the state-waters GHL has not been achieved by September 1, the parallel B season will open 48 hours after the state-waters GHL is achieved or on October 30, whichever occurs first, and depending on ADF&G's ability to provide for orderly fisheries based on inseason assessment of effort, harvest rate, or remaining state-waters pot gear GHL.

<sup>c</sup> The BSAI HAL/pot gear CV <60ft sector does not have a B season allowance however federal quota is frequently reallocated to this sector for additional fishing opportunity.

<sup>d</sup> 50% of the unharvested jig gear GHL allocation (as of March 25) may be made available to pot gear vessels on or after April 1.

<sup>e</sup> A management action may occur after this date to change a GHL allocation or remove vessel size limit, gear limit, harvest caps, or exclusivity restriction, as applicable.

<sup>f</sup> There are no GHL allocations by gear type in AIS.

**This document is for general information purposes only; it is not intended to be a complete list of fishery regulations, nor does it replace or supersede existing regulations. Vessel owners and operators are responsible for understanding all state and federal regulations. For additional information, contact ADF&G in Kodiak at (907) 486-1840 or NMFS Sustainable Fisheries Division at (800)304-4846 #3.**

Appendix A2.—Summary of Westward Region parallel and state-waters Pacific cod season dates and state-waters guideline harvest levels for jig gear, 2023.

Pacific Cod Season Dates	Kodiak area	Chignik area	South Alaska Peninsula area	Dutch Harbor Subdistrict	Aleutian Islands Subdistrict
Federal/parallel A season	48 hours after state-waters jig gear season closure	January 1	January 1	January 1	January 1 (outside Adak Section)
State-waters GHJL season	January 1	March 15	48 hours after WGOA jig gear A-season closure <sup>a</sup>	May 1	<u>Adak Section</u> <sup>b</sup> January 1 for vessels ≤60 ft <u>Entire AIS</u> <sup>b</sup> 4 days after BSAI pot gear CV >60 ft A-season closure
Federal/parallel B season	June 10	June 10	June 10	April 30 <sup>c</sup>	April 30 <sup>c</sup>
State-waters GHJL rollover	After CGOA pot gear B-season closure <sup>d</sup>	August 14 <sup>e</sup>	After WGOA pot gear B-season closure	N/A	N/A
Vessel size limit <sup>e</sup>	N/A	October 30	October 30	October 1	N/A
Gear limit <sup>e</sup>	September 1	August 14	October 30	October 1	N/A
Exclusivity <sup>e</sup>	June 10	N/A	October 30	October 1	After DHS state-waters pot gear season closure
State-waters jig gear GHJL allocation	2,043,389	286,074	740,481	100,000	11,875,000 <sup>b,f</sup>

Notes: CGOA = Federal Central Gulf of Alaska Management Area; WGOA = Federal Western Gulf of Alaska Management Area; AIS = Aleutian Islands Subdistrict; DHS = Dutch Harbor Subdistrict; BSAI = Bering Sea Aleutian Islands; CV = catcher vessel; GHJL = Guideline Harvest Level

<sup>a</sup> If the WGOA federal/parallel A-season jig sector harvest allocation has not been achieved by March 15, the parallel (0–3 nmi) jig gear sector A season may close and the South Alaska Peninsula Area state-waters season for jig gear may open on March 15 or later depending on ADF&G's ability to provide for orderly fisheries based on inseason assessment of effort, harvest rate, or remaining federal jig quota.

<sup>b</sup> Subject to change pending implementation of regulatory changes adopted during the October 2022 Alaska Board of Fisheries meeting.

<sup>c</sup> The BSAI also has a federal/parallel C season for jig gear which opens August 31.

<sup>d</sup> 50% of the unharvested jig gear GHJL allocation (as of March 25) may be made available to pot gear vessels on or after April 1.

<sup>e</sup> A management action may occur after this date to change a GHJL allocation or remove vessel size limit, gear limit, harvest caps, or exclusivity restriction, as applicable.

<sup>f</sup> There are no GHJL allocations by gear type in AIS.

This document is for general information purposes only; it is not intended to be a complete list of fishery regulations, nor does it replace or supersede existing regulations. Vessel owners and operators are responsible for understanding all state and federal regulations. For additional information, contact ADF&G in Kodiak at (907) 486-1840 or NMFS Sustainable Fisheries Division at (800)304-4846 #3.



## **APPENDIX B. LIST OF FISHERY CONTACTS BY AGENCY AND LOCATION**

Appendix B1.–List of fishery contacts by agency and location.

<b>ALASKA DEPARTMENT OF FISH AND GAME</b>		website: <a href="http://www.adfg.alaska.gov/index.cfm?adfg=fishingCommercialByArea.southwest">http://www.adfg.alaska.gov/index.cfm?adfg=fishingCommercialByArea.southwest</a>	
<b><u>Kodiak Office</u></b>			
Mail address:	351 Research Court Kodiak, Alaska 99615	Physical address:	351 Research Court 2nd floor, Kodiak, Alaska
			Phone: (907) 486-1840 Text/inReach/WhatsApp: (907) 512-5841 Fax: (907) 486-1824
Nat Nichols	Kodiak, Chignik, Alaska Peninsula Area Shellfish/Groundfish Biologist		<a href="mailto:nathaniel.nichols@alaska.gov">nathaniel.nichols@alaska.gov</a>
Cassie Whiteside	Kodiak, Chignik, Alaska Peninsula Assistant Area Shellfish/Groundfish Biologist		<a href="mailto:cassandra.whiteside@alaska.gov">cassandra.whiteside@alaska.gov</a>
Mark Stichert	Westward Region Shellfish/Groundfish Management Coordinator		<a href="mailto:mark.stichert@alaska.gov">mark.stichert@alaska.gov</a>
<b><u>Dutch Harbor Office</u></b>			
Mail address:	P.O. Box 920587 Dutch Harbor, Alaska 99692	Physical address:	F.T.S. building, 2nd floor Airport Beach Road, Dutch Harbor
			Phone: (907) 581-1239 Fax: (907) 581-1572
<b>DIVISION OF ALASKA WILDLIFE TROOPERS</b>		website: <a href="https://dps.alaska.gov/awt/home">https://dps.alaska.gov/awt/home</a>	
<b><u>Kodiak Office</u></b>			
Mail address:	2921 A Mill Bay Road Kodiak, Alaska 99615	Physical address:	2921 A Mill Bay Road Kodiak, Alaska
			Phone: (907) 486-4762 Fax: (907) 486-5480
Joshua Boyle, Sergeant			<a href="mailto:joshua.boyle@alaska.gov">joshua.boyle@alaska.gov</a>
<b>COMMERCIAL FISHERIES ENTRY COMMISSION</b>		website: <a href="http://www.cfec.state.ak.us/">http://www.cfec.state.ak.us/</a>	
Mail address:	P.O. Box 110302 Juneau, Alaska 99811-0302	Physical address:	8800 Glacier Highway #109 Juneau, Alaska
			Phone: (907) 789-6150 Fax: (907) 789-6170
<b>NATIONAL MARINE FISHERIES SERVICE - ALASKA REGION</b>		website: <a href="http://www.alaskafisheries.noaa.gov/">http://www.alaskafisheries.noaa.gov/</a>	
<b><u>Sustainable Fisheries Division</u></b>			
Juneau Office			Phone: (800) 304-4846 #3
Dutch Harbor Office			Phone: (907) 581-2062
<b><u>NOAA Fisheries Enforcement</u></b>			
Dutch Harbor Office			Phone: (907) 581-2061
Kodiak Office			Phone: (907) 486-3298
<b><u>NOAA Observer Program</u></b>			Phone: (206) 526-4795