

Fishery Management Plan for the South Alaska Peninsula State-Waters Pacific Cod Season, 2021

by

Kayla Bevaart

Cassandra Whiteside

and

Nathaniel Nichols

December 2020

Alaska Department of Fish and Game

Division of Commercial Fisheries



Symbols and Abbreviations

The following symbols and abbreviations, and others approved for the Système International d'Unités (SI), are used without definition in the following reports by the Divisions of Sport Fish and of Commercial Fisheries: Fishery Manuscripts, Fishery Data Series Reports, Fishery Management Reports, and Special Publications. All others, including deviations from definitions listed below, are noted in the text at first mention, as well as in the titles or footnotes of tables, and in figure or figure captions.

Weights and measures (metric)		General		Mathematics, statistics	
centimeter	cm	Alaska Administrative Code	AAC	all standard mathematical signs, symbols and abbreviations	
deciliter	dL	all commonly accepted abbreviations	e.g., Mr., Mrs., AM, PM, etc.	alternate hypothesis	H _A
gram	g	all commonly accepted professional titles	e.g., Dr., Ph.D., R.N., etc.	base of natural logarithm	e
hectare	ha			catch per unit effort	CPUE
kilogram	kg			coefficient of variation	CV
kilometer	km	at	@	common test statistics	(F, t, χ^2 , etc.)
liter	L			confidence interval	CI
meter	m			compass directions:	correlation coefficient
milliliter	mL	east	E	(multiple)	R
millimeter	mm	north	N	correlation coefficient (simple)	r
Weights and measures (English)		south	S	covariance	cov
cubic feet per second	ft ³ /s	west	W	degree (angular)	°
foot	ft	copyright	©	degrees of freedom	df
gallon	gal	corporate suffixes:		expected value	E
inch	in	Company	Co.	greater than	>
mile	mi	Corporation	Corp.	greater than or equal to	≥
nautical mile	nmi	Incorporated	Inc.	harvest per unit effort	HPUE
ounce	oz	Limited	Ltd.	less than	<
pound	lb	District of Columbia	D.C.	less than or equal to	≤
quart	qt	et alii (and others)	et al.	logarithm (natural)	ln
yard	yd	et cetera (and so forth)	etc.	logarithm (base 10)	log
Time and temperature		exempli gratia		logarithm (specify base)	log ₂ , etc.
day	d	(for example)	e.g.	minute (angular)	'
degrees Celsius	°C	Federal Information Code	FIC	not significant	NS
degrees Fahrenheit	°F	id est (that is)	i.e.	null hypothesis	H ₀
degrees kelvin	K	latitude or longitude	lat or long	percent	%
hour	h	monetary symbols		probability	P
minute	min	(U.S.)	\$, ¢	probability of a type I error	
second	s	months (tables and figures): first three letters	Jan,...,Dec	(rejection of the null hypothesis when true)	α
Physics and chemistry		registered trademark	®	probability of a type II error	
all atomic symbols		trademark	™	(acceptance of the null hypothesis when false)	β
alternating current	AC	United States		second (angular)	"
ampere	A	(adjective)	U.S.	standard deviation	SD
calorie	cal	United States of America (noun)	USA	standard error	SE
direct current	DC	U.S.C.	United States Code	variance	
hertz	Hz			population sample	Var var
horsepower	hp				
hydrogen ion activity (negative log of)	pH				
parts per million	ppm	U.S. state	use two-letter abbreviations (e.g., AK, WA)		
parts per thousand	ppt, ‰				
volts	V				
watts	W				

REGIONAL INFORMATION REPORT 4K20-15

**FISHERY MANAGEMENT PLAN FOR THE SOUTH ALASKA
PENINSULA AREA STATE-WATERS PACIFIC COD SEASON, 2021**

by

Kayla Bevaart, Cassandra Whiteside and, Nathaniel Nichols
Alaska Department of Fish and Game, Division of Commercial Fisheries, Kodiak

Alaska Department of Fish and Game
Division of Commercial Fisheries
351 Research Court
Kodiak, AK 99615

December 2020

The Regional Information Report Series was established in 1987 and was redefined in 2007 to meet the Division of Commercial Fisheries regional need for publishing and archiving information such as area management plans, budgetary information, staff comments and opinions to Alaska Board of Fisheries proposals, interim or preliminary data and grant agency reports, special meeting or minor workshop results and other regional information not generally reported elsewhere. Reports in this series may contain raw data and preliminary results. Reports in this series receive varying degrees of regional, biometric and editorial review; information in this series may be subsequently finalized and published in a different department reporting series or in the formal literature. Please contact the author or the Division of Commercial Fisheries if in doubt of the level of review or preliminary nature of the data reported. Regional Information Reports are available through the Alaska State Library and on the Internet at: <http://www.adfg.alaska.gov/sf/publications/>.

*Kayla Bevaart
Cassandra Whiteside
and
Nathaniel Nichols*

*Alaska Department of Fish and Game, Division of Commercial Fisheries
351 Research Court, Kodiak, AK 99615, USA*

This document should be cited as follows:

Bevaart, K., C. Whiteside, and N. Nichols. 2020. Fishery management plan for the South Alaska Peninsula state-waters Pacific cod season, 2021. Alaska Department of Fish and Game, Division of Commercial Fisheries, Regional Information Report 4K20-15, Kodiak.

The Alaska Department of Fish and Game (ADF&G) administers all programs and activities free from discrimination based on race, color, national origin, age, sex, religion, marital status, pregnancy, parenthood, or disability. The department administers all programs and activities in compliance with Title VI of the Civil Rights Act of 1964, Section 504 of the Rehabilitation Act of 1973, Title II of the Americans with Disabilities Act (ADA) of 1990, the Age Discrimination Act of 1975, and Title IX of the Education Amendments of 1972.

If you believe you have been discriminated against in any program, activity, or facility please write:

ADF&G ADA Coordinator, P.O. Box 115526, Juneau, AK 99811-5526

U.S. Fish and Wildlife Service, 4401 N. Fairfax Drive, MS 2042, Arlington, VA 22203

Office of Equal Opportunity, U.S. Department of the Interior, 1849 C Street NW MS 5230, Washington DC 20240

The department's ADA Coordinator can be reached via phone at the following numbers:

(VOICE) 907-465-6077, (Statewide Telecommunication Device for the Deaf) 1-800-478-3648,

(Juneau TDD) 907-465-3646, or (FAX) 907-465-6078

For information on alternative formats and questions on this publication, please contact:

ADF&G Division of Sport Fish, Research and Technical Services, 333 Raspberry Road, Anchorage AK 99518 (907) 267-2375

TABLE OF CONTENTS

	Page
LIST OF FIGURES	ii
LIST OF APPENDICES	ii
ABSTRACT	1
INTRODUCTION	1
Area Description.....	1
Overview	1
PARALLEL PACIFIC COD FISHERY.....	1
STATE-WATERS PACIFIC COD FISHERY	2
Overview	2
COVID-19 Mitigation	2
2021 Guideline Harvest Level.....	3
Season Dates and Guideline Harvest Level Rollover Provisions	3
Pot Gear	3
Jig Gear.....	3
Guideline Harvest Level Rollover Provisions	4
Vessel Registration Requirements and Size Restrictions	4
Legal Gear, Gear Limits, and Pot Buoy Tags.....	4
Pot Buoy Marking Requirements	5
Pot Storage and Gear Configuration.....	5
Landing Requirements.....	6
Bycatch.....	6
Catch Reporting.....	6
Concurrent Groundfish Fisheries.....	6
Pacific Cod	6
Walleye Pollock.....	7
Inseason Announcements	7
FIGURES	9
APPENDIX A. SUMMARY OF DATES AND STATE-WATERS GUIDELINE HARVEST LEVELS	15
APPENDIX B. LIST OF FISHERY CONTACTS BY AREA AND LOCATION.....	19

LIST OF FIGURES

Figure	Page
1. South Alaska Peninsula Area for state-waters Pacific cod from Kupreanof Point to Unimak Island.	10
2. South Alaska Peninsula Area for state-waters Pacific cod from Unimak Island to long 170°W.	11
3. Steller sea lion restrictions for pot and longline gear during the parallel Pacific cod fishery in the South Alaska Peninsula Area, Kupreanof Point to Scotch Cap.	12
4. Steller sea lion restrictions for pot and longline gear during the parallel Pacific cod fishery in the South Alaska Peninsula Area, Scotch Cap to long 170°W.	13

LIST OF APPENDICES

Appendix	Page
A1. Summary of the Westward Region parallel and state-waters Pacific cod season dates and state-waters guideline harvest levels for pot gear, 2021.	16
A2. Summary of the Westward Region parallel and state-waters Pacific cod season dates and state-waters guideline harvest levels for jig gear, 2021.	17
B1. List of fishery contacts by agency and location.	20

ABSTRACT

This document provides an overview of regulations effective for the 2021 South Alaska Peninsula Area state-waters Pacific cod *Gadus macrocephalus* season. The 2021 South Alaska Peninsula Area state-waters Pacific cod season for pot gear is scheduled to open 7 days after closure of the Western Gulf of Alaska (WGOA) federal/parallel Pacific cod pot sector A season or March 7, whichever is later. The 2021 South Alaska Peninsula Area state-waters Pacific cod season for jig gear is scheduled to open 48 hours after closure of the WGOA federal/parallel Pacific cod jig gear sector A season; however, if the WGOA jig gear sector has not closed by March 15, the state-waters jig gear season may open, based on assessment of effort, harvest rate, and remaining federal jig quota. Vessels participating in the state-waters Pacific cod season may not exceed 58 feet in length, and legal gear is limited to pot, mechanical jigging machine, and hand troll gear. No more than 60 groundfish pots or 5 mechanical jigging machines may be operated from a vessel. The 2021 South Alaska Peninsula Area state-waters season Pacific cod guideline harvest level (GHL) is 5,281,781 pounds. Pot gear vessels are allocated 85% of the total GHL (4,489,514 pounds); jig gear vessels are allocated 15% of the total GHL (792,267 pounds).

Due to health concerns related to COVID-19, vessel operators are encouraged to complete registration forms by contacting the Kodiak ADF&G office by phone, mail, email, or fax, however all fishery related documents are also available in-person at the ADF&G office in Kodiak.

Key words: Pacific cod, *Gadus macrocephalus*, South Alaska Peninsula Area, management plan, regulations, jigging machine, pot, guideline harvest level, parallel season, state-waters season

INTRODUCTION

AREA DESCRIPTION

The South Alaska Peninsula groundfish registration area consists of all waters between a line extending 135° southeast from Kupreanof Point (lat 55°33.98'N, long 159°35.88'W) and long 170°W near western Chuginadak Island (Figures 1 and 2).

OVERVIEW

Two distinct fisheries for Pacific cod *Gadus macrocephalus* occur within state waters (0–3 nmi) of the South Alaska Peninsula Area. The parallel fishery is prosecuted concurrent to the federal Western Gulf of Alaska (WGOA) Pacific cod fishery and is managed by adopting most National Marine Fisheries Service (NMFS) regulations and management actions. The South Alaska Peninsula Area state-waters Pacific cod fishery is prosecuted independent of the federal/parallel fishery and is managed exclusively by the Alaska Department of Fish and Game (ADF&G) under guidelines developed by the Alaska Board of Fisheries.

PARALLEL PACIFIC COD FISHERY

When the federal (3–200 nmi) WGOA area is open to directed Pacific cod fishing, ADF&G opens a concurrent parallel fishery inside state waters (0–3 nmi). Unless specifically prohibited, the same gear types in the federal Pacific cod fishery are allowed during the parallel fishery although nonpelagic trawl vessels are prohibited from fishing inside most state waters in the South Alaska Peninsula Area (5 AAC 39.164(b)(3)). Vessels targeting Pacific cod during the South Alaska Peninsula Area parallel fishery may not exceed 58 feet in overall length (5 AAC 28.577(b)).

Except for vessels using jig gear, all vessels that participate in the parallel Pacific cod fishery must have an activated vessel monitoring system (VMS; 5 AAC 28.087(c)). Steller sea lion *Eumetopias jubatus* restrictions during the South Alaska Peninsula parallel fishery match federal

management measures with the exception of the haul-out on Caton Island for vessels using pot and jig gear (5 AAC 28.087; Figures 3 and 4).

Vessels that fish exclusively in the South Alaska Peninsula Area parallel Pacific cod fishery are not required to possess a federal fishing permit (FFP) or a Pacific cod gear endorsement administered through the federal License Limitation Program (LLP). Vessels with an FFP should be aware of federal regulations regarding observer coverage, catch reporting, Stellar sea lion closures, and LLP requirements prior to participating in the South Alaska Peninsula Area parallel Pacific cod fishery.

The parallel Pacific cod fishery is divided into 2 seasons: the A season and B season. The parallel Pacific cod A season opens January 1 for the pot, longline, and jig gear sectors. The parallel jig gear sector B season opens June 10 or later depending on inseason assessment of the state-waters jig gear fishery; the parallel B season for all other gear sectors opens September 1. Pacific cod harvested during the parallel fishery are deducted from the federal gear-specific sector harvest allocation. Parallel Pacific cod seasons for the pot and longline sectors close when their respective sector harvest allocations are achieved. The parallel Pacific cod A season for the jig gear sector closes when the jig gear sector harvest allocation is achieved; however, if the A-season jig sector harvest allocation has not been achieved by March 15, the parallel jig gear season may close on or after March 15 to allow the South Alaska Peninsula Area state-waters jig gear season to open (Appendix A1 and A2).

For additional information regarding federal Pacific cod regulations and harvest updates, contact NMFS Sustainable Fisheries Division (1-800-304-4846 #3), NMFS Office of Law Enforcement (907-486-3298), or the NMFS Observer Program (206-526-4195). For other information regarding the parallel fishery, contact ADF&G in Kodiak (907-486-1840; Appendix B1).

STATE-WATERS PACIFIC COD FISHERY

OVERVIEW

State-waters (0–3 nmi) Pacific cod fisheries are open access fisheries and are prosecuted independent of federal/parallel fisheries. Regulations pertaining to the South Alaska Peninsula Area Pacific cod fisheries begin on page 74 of the *2020–2021 Statewide Commercial Groundfish Fishing Regulations* booklet.¹ ADF&G manages the South Alaska Peninsula Area state-waters Pacific cod season in accordance with the *South Alaska Peninsula Area Pacific Cod Management Plan* (5 AAC 28.577). The following is a summary of important regulations that will govern the 2021 South Alaska Peninsula Area state-waters Pacific cod season.

COVID-19 MITIGATION

Due to health concerns related to COVID-19, and to minimize contact between vessel operators, processor staff, and ADF&G staff, ADF&G will implement the following changes for the 2021 state-waters Pacific cod seasons:

- Buoy tags for pot gear vessels will be provided free of charge and can be mailed directly to vessel operators upon request; and

¹ https://www.adfg.alaska.gov/static/regulations/fishregulations/pdfs/commercial/2020_2021_cf_groundfish_regs.pdf

- The vessel registration process has been streamlined and can be completed digitally. Vessel operators are encouraged to register by contacting the Kodiak ADF&G office by phone, mail, email, or fax. Contact information is provided in Appendix B1.

2021 GUIDELINE HARVEST LEVEL

The guideline harvest level (GHL) for the state-waters Pacific cod season is based on 30% of the WGOA Acceptable Biological Catch (ABC) for Pacific cod. The 2021 GHL for the South Alaska Peninsula Area state-waters Pacific cod fishery is 5,281,781 pounds. By regulation, 85% of the total GHL (4,489,514 pounds) is allocated to pot gear vessels and 15% of the total GHL (792,267 pounds) is allocated to jig gear vessels.

SEASON DATES AND GUIDELINE HARVEST LEVEL ROLLOVER PROVISIONS

Pot Gear

The 2021 South Alaska Peninsula Area state-waters Pacific cod season for pot gear will open at 12:00 noon March 7, or 7 days after closure of the WGOA federal/parallel Pacific cod pot gear sector A season, whichever is later. The state-waters season opening for pot gear will be delayed 24 hours if the National Weather Service (NWS) marine forecast for Castle Cape to Cape Sarichef (PKZ155) issued at 4:00 a.m. on the scheduled opening date contains gale warnings for that day or the following day. If, after the initial weather delay, the following day's 4:00 a.m. NWS marine forecast contains gale warnings for that day or the following day, the opening of the state-waters season will be delayed for an additional 24 hours. Weather delays may continue on a rolling 24-hour basis for 7 days beyond the initial opening date. After 7 days, the season will open regardless of the weather forecast. The state-waters season for pot gear will close when the South Alaska Peninsula Area Pacific cod pot gear GHL allocation has been harvested.

If the state-waters pot gear GHL allocation has not been fully harvested by August 28, the state-waters pot gear season will close on August 28 to allow the WGOA federal/parallel Pacific cod pot gear sector B season to open on September 1. A summary of state-waters and parallel pot gear season dates is located in Appendix A1.

Jig Gear

The South Alaska Peninsula Area state-waters Pacific cod season for jig gear will open 48 hours after closure of the WGOA federal/parallel Pacific cod jig gear sector A season. If the WGOA federal/parallel jig gear sector A season has not closed by March 15, ADF&G may close the parallel (0–3 nmi) jig sector season on or after March 15 and open the South Alaska Peninsula Area state-waters Pacific cod season for jig gear. ADF&G will close the parallel season based on ADF&G's ability to provide an orderly fishery through assessment of effort, harvest rate, and remaining federal/parallel Pacific cod jig gear quota. The South Alaska Peninsula Area state-waters Pacific cod season for jig gear will close when the mechanical jigging machine and hand troll gear allocation has been harvested. A summary of state-waters and parallel jig gear season dates is located in Appendix A2.

If the state-waters jig season opens prior to closure of the federal jig sector season, the South Alaska Peninsula state-waters jig gear season (0–3 nmi) will be prosecuted concurrent to the federal (3–200 nmi) WGOA jig sector Pacific cod season. Vessels that participate in the South Alaska Peninsula Area state-waters season will be subject to state fisheries regulations, and all Pacific cod harvested will be deducted from the South Alaska Peninsula Area state-waters jig

gear GHL allocation. Vessels that participate in the federal WGOA jig gear sector season will be subject to federal fisheries regulations, and all Pacific cod harvested will be deducted from the federal WGOA jig gear sector harvest allocation.

Guideline Harvest Level Rollover Provisions

If a substantial portion of the total state-waters GHL is remaining when the federal/parallel WGOA pot gear sector B season closes, the state-waters Pacific cod season may reopen to both pot and jig gear. If a substantial portion of the state-waters season GHL remains unharvested on or after October 30, gear limits, vessel size restrictions, and exclusive registration requirements may be removed to facilitate full harvest of the GHL. All actions regarding GHL rollover provisions will be announced by ADF&G advisory announcement. A summary of rollover provisions is located in Appendices A1 and A2.

VESSEL REGISTRATION REQUIREMENTS AND SIZE RESTRICTIONS

The South Alaska Peninsula Area is an exclusive registration area for Pacific cod. Once a vessel is validly registered for the 2021 South Alaska Peninsula Area state-waters Pacific cod season, that vessel may not be used to take Pacific cod in any other exclusive or superexclusive state-waters Pacific cod management area during 2021. Conversely, a vessel validly registered for an exclusive or superexclusive state-waters Pacific cod season outside of the South Alaska Peninsula Area, may not participate in the 2021 South Alaska Peninsula Area state-waters Pacific cod season. If the South Alaska Peninsula Area is designated as a nonexclusive registration area on or after October 30, a vessel validly registered for an exclusive state-waters Pacific cod season outside the South Alaska Peninsula Area may register to participate in the South Alaska Peninsula state-waters Pacific cod season. The South Alaska Peninsula Area exclusive registration requirements do not apply to any parallel Pacific cod fishery.

Due to health concerns related to COVID-19, vessel operators are encouraged to complete registration forms by contacting the Kodiak or Dutch Harbor ADF&G office by phone, mail, email, or fax, however all fishery related documents are also available in-person at the ADF&G office in Kodiak. A 2021 Commercial Fisheries Entry Commission (CFEC) interim-use miscellaneous finfish permit card for the appropriate gear type must be obtained prior to registration. Contact information is provided in Appendix B1.

Tender vessel operators must obtain a tender vessel registration for the state-waters Pacific cod fishery. Tender operators may target Pacific cod with either pot or jig gear while operating as a tender vessel. Separate fish tickets must be completed for fish landed by the tender vessel and for fish taken from other fishing vessels. Tender vessels must use the tLandings application for all groundfish delivered to that tender (5 AAC 39.130(b)).

Pacific cod may not be taken by vessels greater than 58 feet in overall length during the South Alaska Peninsula Area state-waters Pacific cod fishery unless the vessel size restriction is removed by ADF&G on or after October 30.

LEGAL GEAR, GEAR LIMITS, AND POT BUOY TAGS

Pot, mechanical jigging machine, and hand troll gear are the only legal gear types during the state-waters Pacific cod season. Vessels may not use pot and jig gear at the same time; however, vessel operators may change gear registration by contacting the Kodiak ADF&G office (Appendix B1).

During the state-waters season, groundfish pots of any size may be used to take Pacific cod, although individual tunnel eye openings on pot gear must be 36 inches in perimeter or less. All pots must be equipped with a biodegradable escape mechanism (5 AAC 39.145). The biodegradable escape mechanism is an opening 18 inches or greater in length placed within 6 inches of the bottom of the pot and secured closed by a single length of untreated, 100% cotton twine no larger than 30 thread count. No more than 60 groundfish pots may be operated from a vessel unless the pot limit has been rescinded by ADF&G emergency order on or after October 30.

Buoy tags are required for pot gear when the 60-pot limit is in effect. Tags must be placed on the main or trailer buoy and are available at ADF&G offices in Kodiak and Dutch Harbor. A valid 2021 CFEC interim-use miscellaneous finfish permit card for pot gear is required to receive tags.

If buoy tags are lost during the season, replacement tags may be obtained by contacting ADF&G in Kodiak. The vessel owner, operator, or agent must complete and submit an affidavit form to ADF&G detailing the unique number of each lost tag. Pots with lost tags may remain in the water but those pots must be secured open with bait and bait containers removed until replacement tags are attached.

Vessels using mechanical jigging machines are restricted to using no more than 5 machines unless the gear limit has been rescinded by ADF&G on or after October 30. Each of the 5 permissible lines may have no more than 30 hooks. There are no limits on the amount of hand troll gear that may be operated from a vessel. Jig gear vessel operators may use both hand troll and mechanical jigging gear at the same time; however, separate CFEC permit cards and fish tickets are required for each gear type at the time of landing.

POT BUOY MARKING REQUIREMENTS

Buoys attached to groundfish pots must be marked with the permanent ADF&G vessel number of the vessel operating that gear (5 AAC 28.050 and 5 AAC 28.570(e)). The buoy containing the permanent ADF&G number may not be marked with any additional numbers; however, symbols and letters are acceptable. Trailer buoys used to mark ownership or string sequence may be marked with any desired numbers, symbols, or letters.

POT STORAGE AND GEAR CONFIGURATION

All pot gear must be open and unbaited at the time of a parallel or state-waters season closure. Open and unbaited pots may be stored at any depth for a maximum of 7 days following the closure date. After 7 days, pots must be removed from the water or stored opened and unbaited in waters 25 fathoms or less. During the 7 days immediately prior to the South Alaska Peninsula state-waters season opening, open and unbaited pot gear may be stored at any depth.

When the state-waters season opens, the 60-pot limit is in effect. During the 7 days after the state-waters season opening, a vessel may store or transport pots in excess of the 60-pot limit only if those pots are stored open and unbaited in waters 25 fathoms or less or being transported onboard a vessel. After the 7-day period, registered vessels may not operate more than the maximum allowable 60 pots for the remainder of the state-waters season. Following closure of the state-waters season, vessel operators may not stack out or move gear into storage while Pacific cod is on board the vessel (5 AAC 28.070(c)(1)).

Contact NMFS Enforcement regarding gear storage in federal waters (Appendix B1).

LANDING REQUIREMENTS

Vessels participating in the state-waters Pacific cod season are required to deliver their catch within 48 hours after a closure unless 1) cod were harvested as allowable bycatch in another directed fishery, or 2) the vessel is delayed due to extraordinary circumstances and the vessel operator has contacted an ADF&G representative within 48 hours following the closure and has been granted additional time to reach the port of landing (5 AAC 28.581).

BYCATCH

In state waters (0–3 nmi), ADF&G adopts the NMFS maximum retainable bycatch percentages applicable in federal waters (3–200 nmi) for groundfish species that are not actively managed by the State of Alaska. Federal retainable bycatch status is subject to change and may differ between species. Contact NMFS Enforcement in Kodiak for current bycatch percentages and status (Appendix B1).

While targeting Pacific cod, vessels may retain lingcod *Ophiodon elongatus* and dark rockfish *S. ciliatus* up to 20% by weight of Pacific cod on board the vessel, and black rockfish *Sebastes melanops* up to 5% by weight of Pacific cod on board the vessel, unless modified by emergency order. Octopus may be retained as bycatch up to 20% by weight of Pacific cod on board the vessel and must be landed on the same miscellaneous finfish card used to deliver Pacific cod. When the South Alaska Peninsula Area directed black rockfish season is open to commercial fishing, jig vessels concurrently registered for the South Alaska Peninsula Area Pacific cod fishery and the directed black rockfish fishery may retain black rockfish in excess of the 5% bycatch limit. Contact the ADF&G office in Kodiak (907-486-1840) regarding retainable bycatch percentages for state-managed species.

CATCH REPORTING

ADF&G will manage the South Alaska Peninsula Area state-waters Pacific cod pot season using inseason catch reports provided by vessel operators. By regulation, vessel operators using pot gear must report daily the harvest location, number of pot lifts, and pounds of Pacific cod retained in the previous 24-hour period (midnight to midnight). Inseason catch reports allow ADF&G to consider how changes in effort, fleet behavior, tides, and weather influence harvest rates. Catch reports will be taken by satellite dispatch (7894), phone (907-486-1840), text/inReach (907-512-5841), or email (nathaniel.nichols@alaska.gov). Reporting worksheets will be issued to vessel operators during registration.

Reports taken by satellite dispatch will occur between 9:00 a.m. and 10:00 a.m. daily.

CONCURRENT GROUND FISH FISHERIES

Pacific Cod

When the South Alaska Peninsula Area state-waters and WGOA federal Pacific cod seasons are open concurrently for the same gear type,

- vessels may not simultaneously participate in a South Alaska Peninsula Area state-waters season and any other Pacific cod season;
- vessel operators registered for a state-waters season must invalidate their ADF&G South Alaska Peninsula Area state-waters Pacific cod registration prior to participating in a federal Pacific cod season;

- vessel operators participating in a federal Pacific cod season must register with ADF&G prior to participating in the South Alaska Peninsula Area state-waters Pacific cod season;
- all Pacific cod must be delivered prior to validating or invalidating a South Alaska Peninsula Area state-waters Pacific cod registration; and
- vessel operators may validate or invalidate vessel registrations by contacting an ADF&G representative in Kodiak (907-486-1840) during normal state business hours (Monday–Friday, 8:00 a.m. to 4:30 p.m.).

Walleye Pollock

Vessels may simultaneously participate in the South Alaska Peninsula Area state-waters Pacific cod season and the federally managed walleye pollock *Gadus chalcogrammus* fishery in waters between long 170°W and Castle Cape (long 158°20'W). Vessels actively participating in the South Alaska Peninsula state-waters Pacific cod fishery may leave baited pot gear on the fishing grounds while trawling for walleye pollock; however, those vessels must contact ADF&G staff in Kodiak prior to exiting or re-entering the South Alaska Peninsula state-waters Pacific cod fishery. Vessel operators are reminded that all state-waters Pacific cod delivery and gear storage requirements apply in the event the state-waters Pacific cod season closes while vessels are targeting walleye pollock. Vessels intending to participate in groundfish fisheries outside of waters between long 170°W and Castle Cape must first invalidate their South Alaska Peninsula Area state-waters Pacific cod registration and legally store all pot gear (5 AAC 28.556(f)).

INSEASON ANNOUNCEMENTS

All actions pertaining to regulatory changes in the state-waters season will be communicated to the fleet by satellite dispatch, distributed via the ADF&G advisory announcement email subscription service (<http://www.adfg.alaska.gov/index.cfm?adfg=cfnews.main>), and relayed through participating processors and National Weather Service marine weather VHF forecasts when possible. ADF&G will make every effort to provide advance notice prior to a closure; however, the potential exists for a short notice closure.

A weekly harvest update will be distributed each Monday while the state-waters season is open. Weekly harvest updates are also available on the ADF&G website at: <http://www.adfg.alaska.gov/index.cfm?adfg=commercialbyareaakpeninsula.groundfish#harvest> or from the Kodiak ADF&G office.

FIGURES

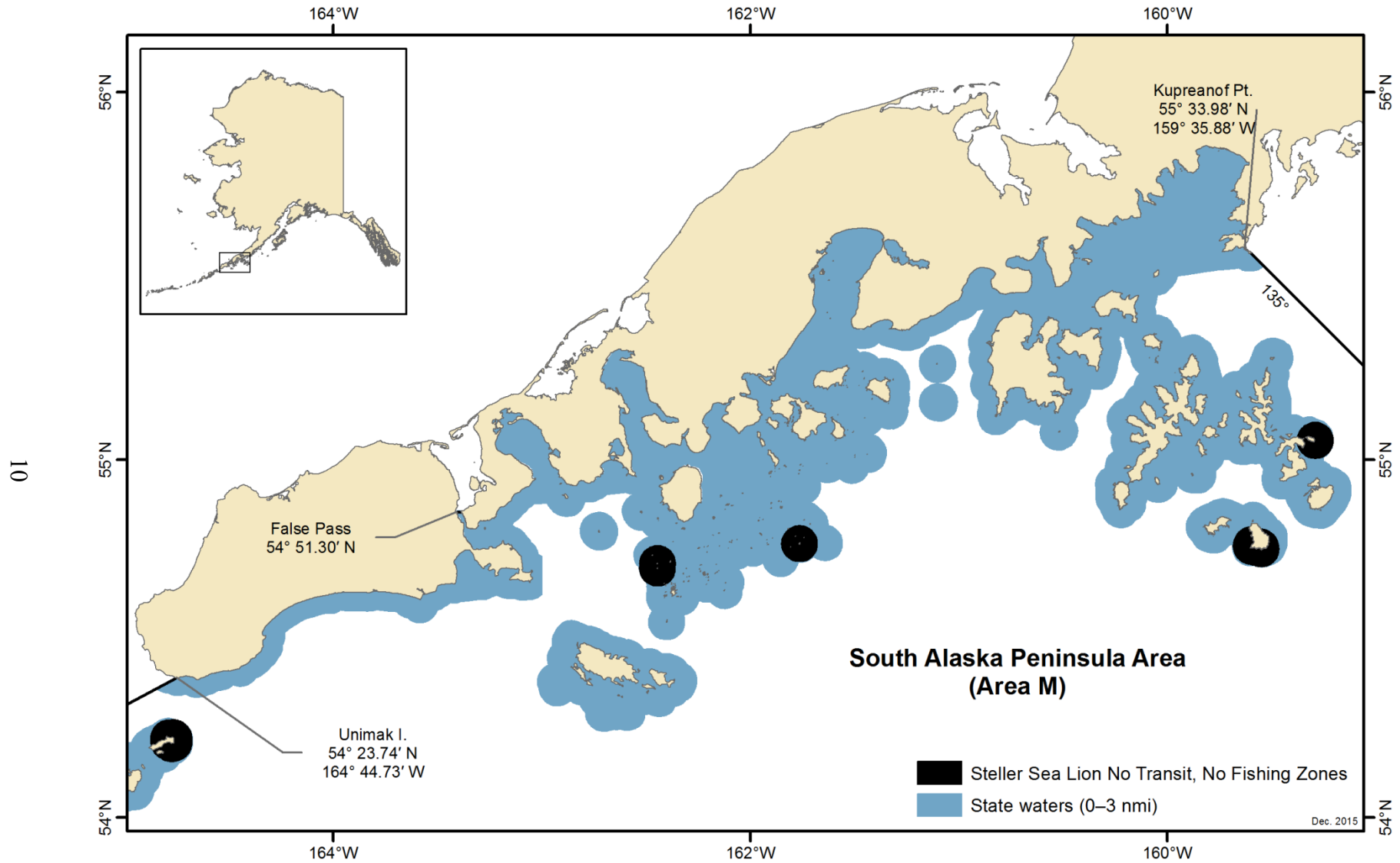


Figure 1.—South Alaska Peninsula Area for state-waters Pacific cod from Kupreanof Point to Unimak Island.

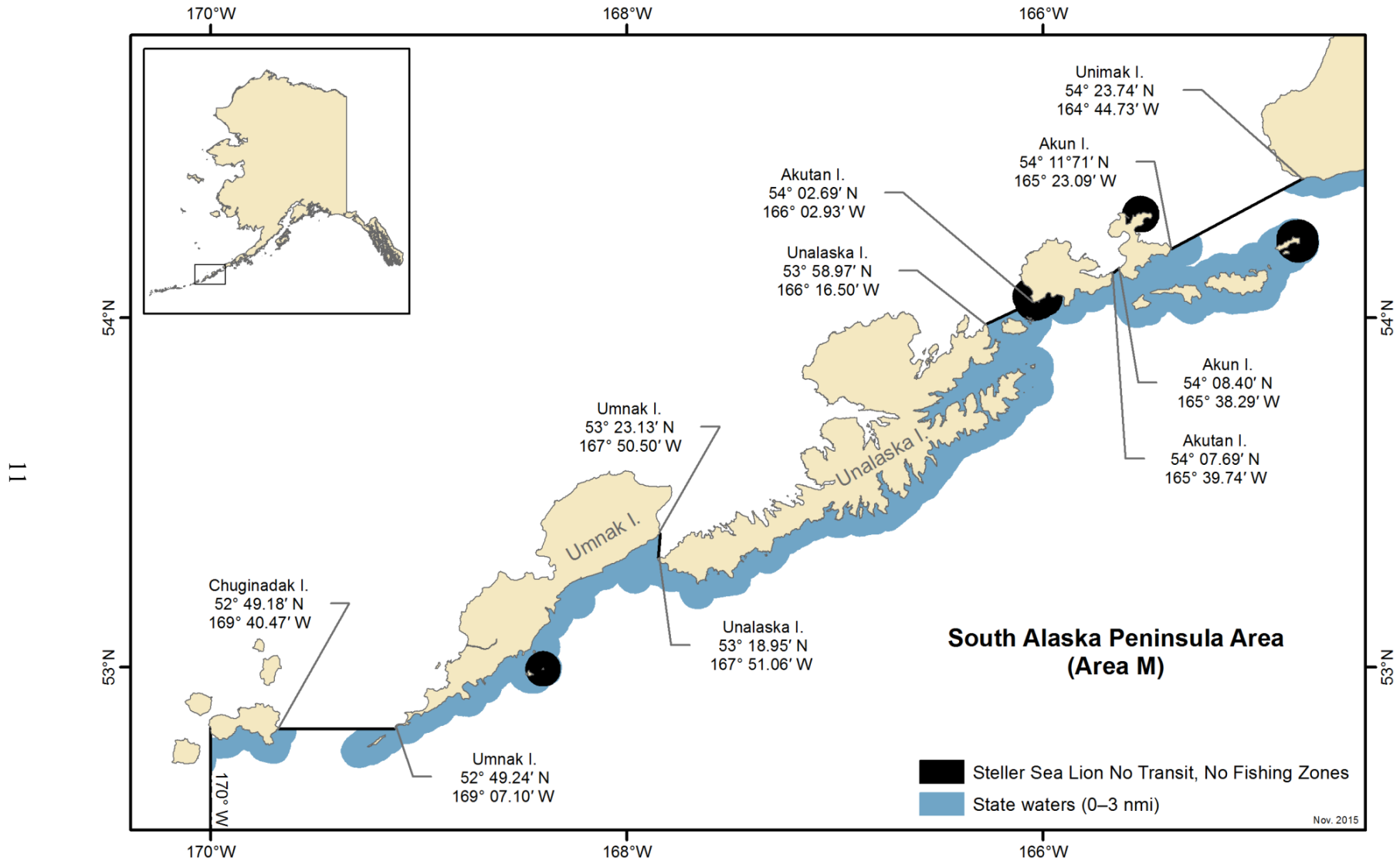


Figure 2.—South Alaska Peninsula Area for state-waters Pacific cod from Unimak Island to long 170°W.

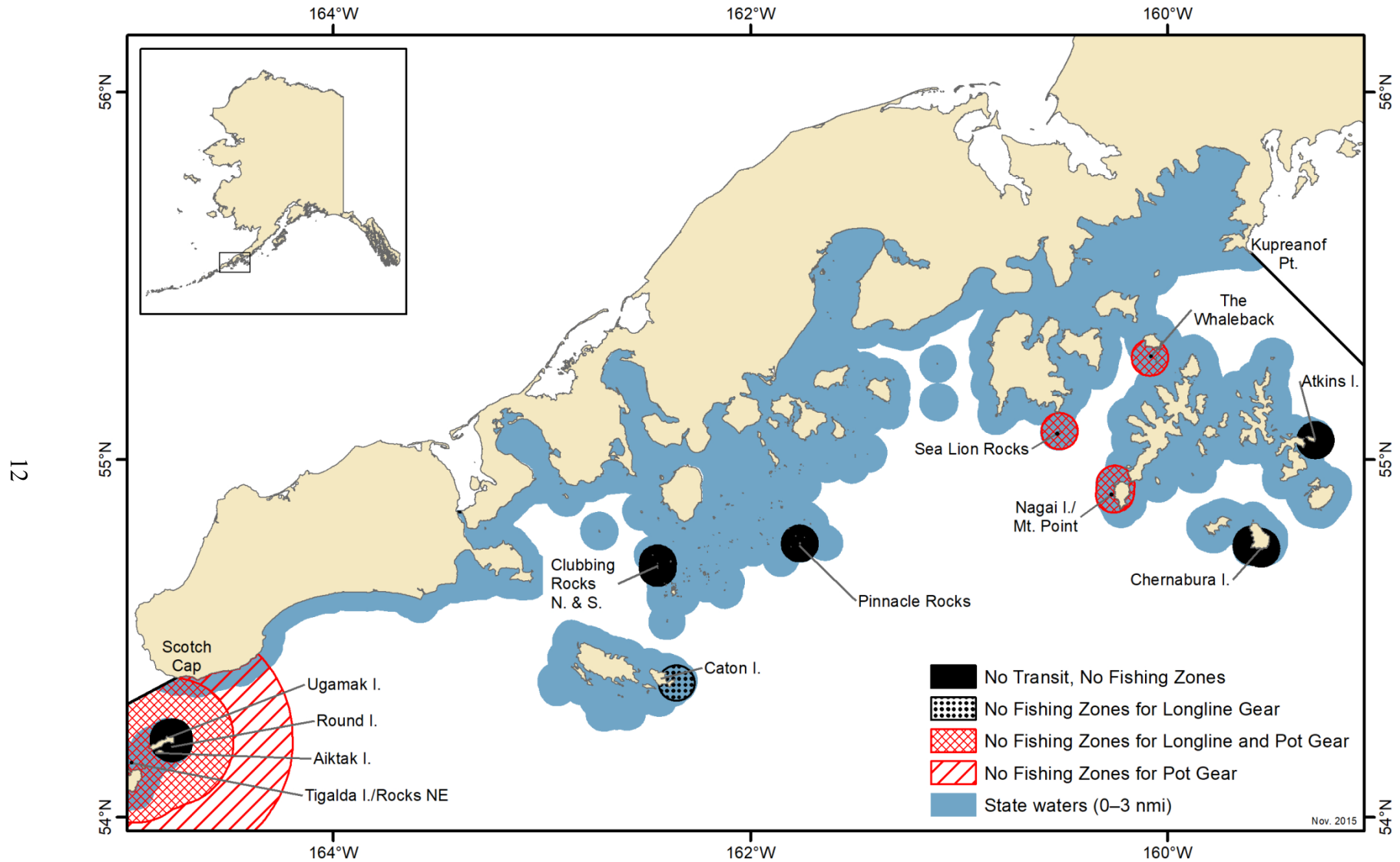


Figure 3.—Steller sea lion restrictions for pot and longline gear during the parallel Pacific cod fishery in the South Alaska Peninsula Area, Kupreanof Point to Scotch Cap.

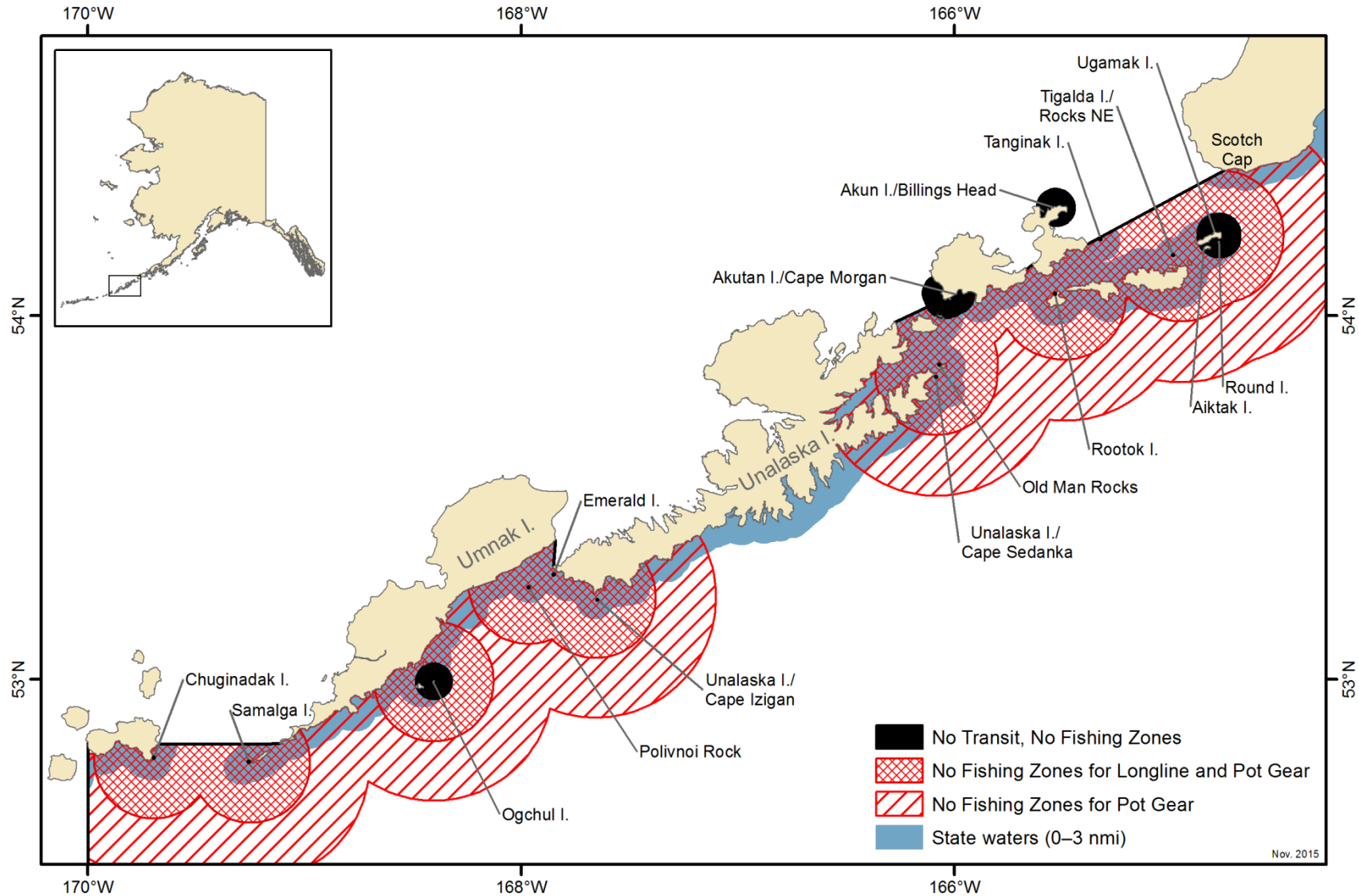


Figure 4.—Steller sea lion restrictions for pot and longline gear during the parallel Pacific cod fishery in the South Alaska Peninsula Area, Scotch Cap to long 170°W.

**APPENDIX A. SUMMARY OF DATES AND STATE-
WATERS GUIDELINE HARVEST LEVELS**

Appendix A1.—Summary of the Westward Region parallel and state-waters Pacific cod season dates and state-waters guideline harvest levels for pot gear, 2021.

Pacific Cod Season Dates	Kodiak Area	Chignik Area	South Alaska Peninsula Area	Dutch Harbor Subdistrict	Aleutian Islands Subdistrict
Federal/Parallel A Season	January 1	January 1	January 1	January 1	January 1 (outside Adak Section)
State-Waters GHL Season	7 days after CGOA pot gear A-season closure	March 1 or 7 days after CGOA pot gear A-season closure, whichever is later	March 7 or 7 days after WGOA pot gear A-season closure, whichever is later	7 days after BSAI HAL/pot gear CV<60 ft A-season closure	<u>Adak Section:</u> January 1 for vessels ≤60 ft <u>Entire AIS:</u> 4 days after BSAI pot gear CV >60 ft A-season closure for vessels ≤100 ft March 15 for vessels ≤125 ft
Federal/Parallel B Season	September 1	September 1 ^a	September 1	N/A ^b	N/A ^b
State-Waters GHL Rollover	After CGOA pot gear B-season closure ^c	August 15	After WGOA pot gear B-season closure	N/A	N/A
Vessel Size Limit^d	N/A	October 30	October 30	October 1	N/A
Gear Limit^e	September 1	August 15	October 30	October 1	N/A
Exclusivity^f	October 30	N/A	October 30	October 1	After DHS state-waters pot gear season closure
State-Waters Pot Gear GHL Allocation	1,881,626	2,370,849	4,489,514	27,292,000	15,000,000^g

Notes: CGOA = Federal Central Gulf of Alaska Management Area; WGOA = Federal Western Gulf of Alaska Management Area; AIS = Aleutian Islands Subdistrict; DHS = Dutch Harbor Subdistrict; BSAI = Bering Sea Aleutian Islands; HAL = hook and line; CV = catcher vessel; GHL = Guideline Harvest Level

^a If the state-waters GHL has not been achieved by September 1, the parallel B season will open 48 hours after the state-waters GHL is achieved or on October 30, whichever occurs first.

^b The BSAI HAL/pot gear CV <60ft sector does not have a B season allowance however federal quota is frequently reallocated to this sector for additional fishing opportunity.

^c 50% of the unharvested jig gear GHL allocation (as of March 25) may be made available to pot gear vessels on or after April 1.

^d Vessel size limit restrictions may be removed on or after this date.

^e Gear limit restrictions may be removed on or after this date.

^f Areas may be designated nonexclusive registration areas on or after this date.

^g There are no GHL allocations by gear type in AIS.

This document is for general information purposes only; it is not intended to be a complete list of fishery regulations, nor does it replace or supersede existing regulations. Vessel owners and operators are responsible for understanding all state and federal regulations. For additional information, contact ADF&G in Kodiak at (907) 486-1840 or NMFS Sustainable Fisheries Division at (800)304-4846 #3.

Appendix A2.—Summary of the Westward Region parallel and state-waters Pacific cod season dates and state-waters guideline harvest levels for jig gear, 2021.

Pacific Cod Season Dates	Kodiak Area	Chignik Area	South Alaska Peninsula Area	Dutch Harbor Subdistrict	Aleutian Islands Subdistrict
Federal/Parallel A Season	48 hours after state-waters jig gear season closure	January 1	January 1	January 1	January 1 (outside Adak Section)
State-Waters GHL Season	January 1	March 15	48 hours after WGOA jig gear A-season closure ^a	May 1	<u>Adak Section:</u> January 1 for vessels ≤60 ft <u>Entire AIS:</u> 4 days after BSAI pot gear CV >60 ft A-season closure
Federal/Parallel B Season	June 10	June 10	June 10	April 30 ^b	April 30 ^b
State-Waters GHL Rollover	After CGOA pot gear B-season closure ^c	August 15	After WGOA pot gear B-season closure	N/A	N/A
Vessel Size Limit^d	N/A	October 30	October 30	October 1	N/A
Gear Limit^e	September 1	August 15	October 30	October 1	N/A
Exclusivity^f	June 10	N/A	October 30	October 1	After DHS state-waters pot gear season closure
State-Waters Jig Gear GHL Allocation	1,881,626	263,428	792,267	100,000	15,000,000^g

Notes: CGOA = Federal Central Gulf of Alaska Management Area; WGOA = Federal Western Gulf of Alaska Management Area; AIS = Aleutian Islands Subdistrict; DHS = Dutch Harbor Subdistrict; BSAI = Bering Sea Aleutian Islands; CV = catcher vessel; GHL = Guideline Harvest Level

^a If the WGOA federal/parallel A-season jig sector harvest allocation has not been achieved by March 15, the parallel (0–3 nmi) jig gear sector A season may close and the South Alaska Peninsula Area state-waters season for jig gear may open on March 15 or later depending on ADF&G's ability to provide for orderly fisheries based on inseason assessment of effort, harvest rate, or remaining federal jig quota.

^b The BSAI also has a federal/parallel C season for jig gear which opens August 31.

^c 50% of the unharvested jig gear GHL allocation (as of March 25) may be made available to pot gear vessels on or after April 1.

^d Vessel size limit restrictions may be removed on or after this date.

^e Gear limit restrictions may be removed on or after this date.

^f Areas may be designated nonexclusive registration areas on or after this date.

^g There are no GHL allocations by gear type in AIS.

This document is for general information purposes only; it is not intended to be a complete list of fishery regulations, nor does it replace or supersede existing regulations. Vessel owners and operators are responsible for understanding all state and federal regulations. For additional information, contact ADF&G in Kodiak at (907) 486-1840 or NMFS Sustainable Fisheries Division at (800)304-4846 #3.

**APPENDIX B. LIST OF FISHERY CONTACTS BY AREA
AND LOCATION**

Appendix B1.–List of fishery contacts by agency and location.

ALASKA DEPARTMENT OF FISH AND GAME website: <http://www.adfg.alaska.gov/index.cfm?adfg=fishingCommercialByArea.southwest>

Kodiak Office

Mail address:	351 Research Court Kodiak, Alaska 99615	Physical address:	351 Research Court 2nd floor, Kodiak, Alaska	Phone: (907) 486-1840 Text/inReach: (907) 512-5841 Fax: (907) 486-1824
Nathaniel Nichols	Kodiak, Chignik, Alaska Peninsula Area Shellfish/Groundfish Biologist			nathaniel.nichols@alaska.gov
Cassandra Whiteside	Kodiak, Chignik, Alaska Peninsula Assistant Area Shellfish/Groundfish Biologist			cassandra.whiteside@alaska.gov
Mark Stichert	Westward Region Shellfish/Groundfish Management Coordinator			mark.stichert@alaska.gov

Dutch Harbor Office

Mail address:	P.O. Box 920587 Dutch Harbor, Alaska 99692	Physical address:	F.T.S. building, 2nd floor Airport Beach Road, Dutch Harbor	Phone: (907) 581-1239 Fax: (907) 581-1572
---------------	---	-------------------	--	--

DIVISION OF ALASKA WILDLIFE TROOPERS

website: <http://www.dps.state.ak.us/AWT/>

Kodiak Office

Mail address:	2921 A Mill Bay Road Kodiak, Alaska 99615	Physical address:	2921 A Mill Bay Road Kodiak, Alaska	Phone: (907) 486-4762 Fax: (907) 486-5480
Shane Nicholson, Sergeant				larry.nicholson@alaska.gov

COMMERCIAL FISHERIES ENTRY COMMISSION

website: <http://www.cfec.state.ak.us/>

Mail address:	P.O. Box 110302 Juneau, Alaska 99811-0302	Physical address:	8800 Glacier Highway #109 Juneau, Alaska	Phone: (907) 789-6150 Fax: (907) 789-6170
---------------	--	-------------------	---	--

NATIONAL MARINE FISHERIES SERVICE - ALASKA REGION

website: <http://www.alaskafisheries.noaa.gov/>

Sustainable Fisheries Division

Juneau Office	Phone: (800) 304-4846 #3
Dutch Harbor Office	Phone: (907) 581-2062

NOAA Fisheries Enforcement

Dutch Harbor Office	Phone: (907) 581-2061
Kodiak Office	Phone: (907) 486-3298
NOAA Observer Program	Phone: (206) 526-4795
