

Regional Information Report No. 1J26-06

2026 Southeast Alaska and Yakutat Spring Troll Fishery Management Plan

by

Grant Hagerman

and

Isabel Platten

April 2026

Alaska Department of Fish and Game

Division of Commercial Fisheries



Symbols and Abbreviations

The following symbols and abbreviations, and others approved for the Système International d'Unités (SI), are used without definition in the following reports by the Divisions of Sport Fish and of Commercial Fisheries: Fishery Manuscripts, Fishery Data Series Reports, Fishery Management Reports, and Special Publications. All others, including deviations from definitions listed below, are noted in the text at first mention, as well as in the titles or footnotes of tables, and in figures or figure captions.

Weights and measures (metric)		General		Mathematics, statistics	
centimeter	cm	Alaska Administrative Code	AAC	<i>all standard mathematical signs, symbols and abbreviations</i>	
deciliter	dL	all commonly accepted abbreviations	e.g., Mr., Mrs., AM, PM, etc.	alternate hypothesis	H _A
gram	g			base of natural logarithm	e
hectare	ha			catch per unit effort	CPUE
kilogram	kg	all commonly accepted professional titles	e.g., Dr., Ph.D., R.N., etc.	coefficient of variation	CV
kilometer	km			common test statistics	(F, t, χ^2 , etc.)
liter	L	at	@	confidence interval	CI
meter	m	compass directions:		correlation coefficient	
milliliter	mL	east	E	(multiple)	R
millimeter	mm	north	N	correlation coefficient	
		south	S	(simple)	r
Weights and measures (English)		west	W	covariance	cov
cubic feet per second	ft ³ /s	copyright	©	degree (angular)	°
foot	ft	corporate suffixes:		degrees of freedom	df
gallon	gal	Company	Co.	expected value	E
inch	in	Corporation	Corp.	greater than	>
mile	mi	Incorporated	Inc.	greater than or equal to	≥
nautical mile	nmi	Limited	Ltd.	harvest per unit effort	HPUE
ounce	oz	District of Columbia	D.C.	less than	<
pound	lb	et alii (and others)	et al.	less than or equal to	≤
quart	qt	et cetera (and so forth)	etc.	logarithm (natural)	ln
yard	yd	exempli gratia (for example)	e.g.	logarithm (base 10)	log
		Federal Information Code	FIC	logarithm (specify base)	log ₂ , etc.
Time and temperature		id est (that is)	i.e.	minute (angular)	'
day	d	latitude or longitude	lat or long	not significant	NS
degrees Celsius	°C	monetary symbols (U.S.)	\$, ¢	null hypothesis	H ₀
degrees Fahrenheit	°F	months (tables and figures): first three letters	Jan, ..., Dec	percent	%
degrees kelvin	K	registered trademark	®	probability	P
hour	h	trademark	™	probability of a type I error (rejection of the null hypothesis when true)	α
minute	min	United States (adjective)	U.S.	probability of a type II error (acceptance of the null hypothesis when false)	β
second	s	United States of America (noun)	USA	second (angular)	"
		U.S.C.	United States Code	standard deviation	SD
Physics and chemistry		U.S. state	use two-letter abbreviations (e.g., AK, WA)	standard error	SE
all atomic symbols				variance	
alternating current	AC			population sample	Var
ampere	A			sample	var
calorie	cal				
direct current	DC				
hertz	Hz				
horsepower	hp				
hydrogen ion activity (negative log of)	pH				
parts per million	ppm				
parts per thousand	ppt, ‰				
volts	V				
watts	W				

REGIONAL INFORMATION REPORT NO. 1J26-06

**2026 SOUTHEAST ALASKA AND YAKUTAT SPRING TROLL FISHERY
MANAGEMENT PLAN**

by

Grant Hagerman and Isabel Platten

Alaska Department of Fish and Game, Division of Commercial Fisheries, Sitka

Alaska Department of Fish and Game
Division of Commercial Fisheries, Publications Section
802 3rd Street, Douglas, Alaska, 99824

April 2026

The Regional Information Report Series was established in 1987 and was redefined in 2007 to meet the Division of Commercial Fisheries regional need for publishing and archiving information such as area management plans, budgetary information, staff comments and opinions to Alaska Board of Fisheries proposals, interim or preliminary data and grant agency reports, special meeting or minor workshop results and other regional information not generally reported elsewhere. Reports in this series may contain raw data and preliminary results. Reports in this series receive varying degrees of regional, biometric, and editorial review; information in this series may be subsequently finalized and published in a different department reporting series or in the formal literature. Please contact the author or the Division of Commercial Fisheries if in doubt of the level of review or preliminary nature of the data reported. Regional Information Reports are available through the Alaska State Library and on the Internet at: <http://www.adfg.alaska.gov/sf/publications/>.

Product names used in this publication are included for completeness and do not constitute product endorsement. The Alaska Department of Fish and Game does not endorse or recommend any specific company or their products.

*Grant Hagerman and Isabel Platten
Alaska Department of Fish and Game, Division of Commercial Fisheries,
304 Lake Street, Room 103, Sitka, Alaska 99835-7563 USA*

This document should be cited as follows:

Hagerman, G., and I. Platten. 2026. 2026 Southeast Alaska and Yakutat spring troll fishery management plan. Alaska Department of Fish and Game, Division of Commercial Fisheries, Regional Information Report No. 1J26-06, Douglas.

The Alaska Department of Fish and Game (ADF&G) administers all programs and activities free from discrimination based on race, color, national origin, age, sex, religion, marital status, pregnancy, parenthood, or disability. The department administers all programs and activities in compliance with Title VI of the Civil Rights Act of 1964, Section 504 of the Rehabilitation Act of 1973, Title II of the Americans with Disabilities Act (ADA) of 1990, the Age Discrimination Act of 1975, and Title IX of the Education Amendments of 1972.

If you believe you have been discriminated against in any program, activity, or facility please write:

ADF&G ADA Coordinator, P.O. Box 115526, Juneau, AK 99811-5526

U.S. Fish and Wildlife Service, 4401 N. Fairfax Drive, MS 2042, Arlington, VA 22203

Office of Equal Opportunity, U.S. Department of the Interior, 1849 C Street NW MS 5230, Washington DC 20240

The department's ADA Coordinator can be reached via phone at the following numbers:

(VOICE) 907-465-6077, (Statewide Telecommunication Device for the Deaf) 1-800-478-3648,

(Juneau TDD) 907-465-3646, or (FAX) 907-465-6078

For information on alternative formats and questions on this publication, please contact:

ADF&G, Division of Sport Fish, Research and Technical Services, 333 Raspberry Rd, Anchorage AK 99518 (907) 267-2517

TABLE OF CONTENTS

	Page
LIST OF TABLES.....	ii
LIST OF FIGURES.....	ii
ABSTRACT.....	1
INTRODUCTION.....	1
MANAGEMENT OBJECTIVES AND METHODS.....	1
Spring Fisheries.....	1
Terminal Harvest Area Fisheries.....	2
RETENTION OF OTHER SALMON SPECIES.....	2
2025 SPRING TROLL FISHERY REVIEW.....	2
2026 SPRING TROLL FISHERIES OVERVIEW.....	3
Regulatory Changes and Management Actions To Conserve Wild Stock Chinook Salmon in the Spring Troll Fisheries.....	3
Time and Area Modifications.....	3
Spring Troll Fishery Openings.....	3
District 8 Directed Chinook Salmon Fishery.....	4
District 11 Directed Chinook Salmon Fishery.....	4
Terminal Area Troll Fisheries.....	5
2026 ALASKA HATCHERY CHINOOK RUN FORECAST.....	7
REGULATION SUMMARY.....	7
Closed Waters.....	8
Gear.....	8
Size and Landing Requirements.....	8
Reporting Requirements.....	9
Sport Fishing and Chartering from a Registered Troll Vessel.....	9
Groundfish and Halibut Bycatch Information.....	10
LINGCOD.....	10
ROCKFISH BYCATCH IN STATE WATERS.....	12
Halibut.....	12
Other Regulations.....	12
2026 SPRING TROLL AREAS AND MAPS.....	14
Ketchikan Areas.....	14
Craig and Wrangell Areas.....	20
Frederick Sound and Chatham Strait Area.....	26
Sitka Areas.....	33
North Chatham Strait and Icy Strait Hatchery Chum Salmon Areas.....	39
Yakutat Area.....	41
FISHERY CONTACTS.....	43
REFERENCES CITED.....	44

LIST OF TABLES

Table		Page
1.	Guideline limits of the U.S./Canada Pacific Salmon Treaty (PST) Chinook salmon that may be harvested in each spring troll fishing area.....	2
2.	2026 Alaska hatchery Chinook salmon run forecasts.....	7
3.	Bycatch Provisions for the 2026 Spring Salmon Troll Fishery.....	10

LIST OF FIGURES

Figure		Page
1.	Location of Chinook salmon hatcheries, remote release sites, and broodstock sources in Southeast Alaska.....	13
2.	Nakat Inlet Terminal Harvest Area (THA).....	15
3.	Ketchikan spring troll areas and the Carroll Inlet Terminal Harvest Area (THA).	16
4.	Carroll Inlet Terminal Harvest Area (THA).....	17
5.	Neets Bay Terminal Harvest Area (THA).....	18
6.	Kendrick Bay Terminal Harvest Area (THA).	19
7.	Burnett Inlet Terminal Harvest Area (THA).	22
8.	Craig spring troll areas.	23
9.	Port Saint Nicholas Terminal Harvest Area (THA).	24
10.	Anita Bay Terminal Harvest Area (THA).	25
11.	Little Port Walter Terminal Harvest Area (THA).....	27
12.	Frederick Sound spring troll areas and Terminal Harvest Areas (THAs).	28
13.	Gunnuk Creek Terminal Harvest Area (THA).	29
14.	Southeast Cove Terminal Harvest Area (THA).	30
15.	Thomas Bay Terminal Harvest Area (THA).	31
16.	Hidden Falls Terminal Harvest Area (THA).....	32
17.	Sitka spring troll areas and Terminal Harvest Areas (THAs).....	35
18.	West Crawfish Inlet spring troll, and the Crawfish Inlet Terminal Harvest Area (THA) and Special Harvest Area (SHA).	36
19.	Silver Bay Terminal Harvest Area (THA).	37
20.	Deep Inlet Terminal Harvest Area (THA).....	38
21.	Northern Chatham Strait and Icy Strait spring troll chum salmon areas.	40
22.	Yakutat Bay spring troll area.....	41
23.	Southeast Alaska lingcod management areas and restricted waters of Sitka Sound Special Use Area.	42

ABSTRACT

This document summarizes the plan that the Alaska Department of Fish and Game will follow to manage the 2026 Southeast Alaska spring commercial salmon troll fisheries, according to State of Alaska Administrative Code 5 AAC 29.090 and guidelines mandated by the Alaska Board of Fisheries under Chinook salmon action plans for stocks of management concern.

Key words: salmon, Chinook, chum, troll, spring, commercial, management plan, Southeast Alaska

INTRODUCTION

This plan summarizes the management approach the Alaska Department of Fish and Game (ADF&G or department) will employ to manage the Southeast Alaska and Yakutat (SEAK) commercial spring troll fisheries in 2026. Most spring fisheries target Alaska hatchery-produced Chinook salmon and are conducted during May and June of each year. Spring fisheries are managed in season, according to Alaska Board of Fisheries (BOF) regulations and U.S./Canada Pacific Salmon Treaty (PST) provisions.

This report presents plans for the 2026 spring and terminal harvest area (THA) troll fisheries along with maps, area descriptions, and Alaska hatchery-produced Chinook salmon forecasts. A review of 2025 spring troll fisheries is provided as well as a summary of pertinent regulations.

MANAGEMENT OBJECTIVES AND METHODS

SPRING FISHERIES

Spring fisheries are conducted along hatchery salmon migration routes or in close proximity to a number of Chinook salmon hatcheries and release sites. These sites include: Little Port Walter Hatchery (National Marine Fisheries Service [NMFS]), Whitman Lake Hatchery, Crystal Lake Hatchery, Port Saint Nicholas Hatchery, Carroll Inlet and Anita Bay release sites (Southern Southeast Regional Aquaculture Association [SSRAA]), Medvejie Hatchery, Crawfish Inlet, Gunnuk Creek, and Southeast Cove release sites (Northern Southeast Regional Aquaculture Association [NSRAA]), and Macaulay Hatchery (Douglas Island Pink and Chum [DIPAC]; Figure 1).

Most spring and THA troll fisheries target Alaska hatchery-produced Chinook salmon, although non-Alaska hatchery-produced or PST Chinook salmon are also harvested. There are also spring troll fisheries that target Alaska hatchery-produced chum salmon located in Keku Strait, North Chatham Strait, and Icy Strait (Districts 9, 10, 12, and 14). Although there is no ceiling on the number of Chinook salmon harvested in spring fisheries, the take of PST Chinook salmon is limited according to the percentage of Alaska hatchery-produced fish taken in the fishery. Non-Alaska hatchery-produced fish are counted toward the annual PST quota of Chinook salmon, but most Alaska hatchery-produced fish are not. The guideline limits of PST fish that may be harvested in each spring fishing area are specified in 5 AAC 29.090 (d)(1)(D) (Table 1). However, as provided in 5 AAC 29.090(d)(3)(A) and (B), if the preseason abundance index (AI) is 1.15 or above, and the amount of Chinook salmon remaining on the winter guideline harvest level (GHL) at the end of the winter season is greater than 10,000 fish or 15,000 fish, then an additional 250 or 500 Chinook salmon will be added to the PST limits of each harvest tier. With a 2026 preseason AI above 1.15, and an estimated 25,000 Chinook remaining on the winter fishery GHL, 500 Chinook will be added to each of the PST tier limits (Table 1).

Table 1.—Guideline limits of the U.S./Canada Pacific Salmon Treaty (PST) Chinook salmon that may be harvested in each spring troll fishing area.

Alaska hatchery contribution to the harvest	PST Chinook salmon limit
Less than 25%	1,500
At least 25% and less than 35%	2,500
At least 35% and less than 50%	3,500
At least 50% and less than 66%	5,500
66% or more	no limit

Each spring troll fishing area is managed individually with fishing periods announced through a series of weekly advisory announcements. Department port sampling staff are tasked with observing salmon deliveries to help document and assess hatchery contribution to each fishery. The head of each tagged fish is shipped to ADF&G’s Mark, Tag, and Age Laboratory in Juneau for coded wire tag (CWT) detection and decoding. Fishing time in an area may be extended by emergency order, based on inseason assessment of CWT data and historical harvest timing information. **It is imperative that trollers and tender operators segregate salmon taken in different fishing areas and keep those fish separated** so that ADF&G port sampling staff can collect accurate data to determine the percentage of Alaska hatchery fish taken in each spring area. Fishery extensions will be announced by ADF&G advisory announcement and recorded on the troll fishery telephone hotlines; telephone numbers are provided in the *Fishery Contacts* section at the end of this report. Announcements of inseason extensions will be submitted for broadcast on the United States Coast Guard and National Weather Service marine information broadcasts; however, the department cannot ensure the availability or functionality of these communication systems in all areas.

TERMINAL HARVEST AREA FISHERIES

Southeast Alaska THA fisheries are conducted in areas near a hatchery or release site. Chinook, coho, and chum salmon harvested in most THAs are considered to be 100% Alaska hatchery origin, based on previous data generated through fishery sampling activity. THAs that will open during the 2026 spring troll season include Anita Bay, Burnett Inlet, Carroll Inlet, Crawfish Inlet, Deep Inlet, Little Port Walter, Nakat Bay, Neets Bay, Port Saint Nicholas, Silver Bay, Southeast Cove, Gunnuk Creek, and Thomas Bay. THA fisheries are conducted according to management plans unique to each area and may involve a rotational fishing schedule split among multiple commercial gear types.

RETENTION OF OTHER SALMON SPECIES

Coho salmon may be retained and sold beginning June 1 (5 AAC 29.110[a]). Sockeye, pink, and chum salmon may be retained at any time during open spring troll fishing periods. An exception to this provision is that retention of sockeye salmon is prohibited in the Northern Chatham Strait and Point Couverden hatchery chum areas (5 AAC 29.114[b]). If an Atlantic salmon is caught, fishermen are advised to retain the whole fish (fresh or frozen, entrails intact) and contact a local ADF&G office so that biological samples can be collected.

2025 SPRING TROLL FISHERY REVIEW

A total of 209 permits participated in the 2025 nonterminal spring Chinook salmon fisheries, harvesting 13,143 Chinook salmon. The largest harvests were taken in the Sitka Sound, Mountain Point, and Redoubt Bay spring troll areas. The 2025 nonterminal area Chinook salmon harvest was

1,034 fish fewer than in 2024—below the 5-year (2020–2024) average by 8% and below the 10-year (2015–2024) average by 35%. The Alaska hatchery contribution of 48% was above the recent 5-year (30%) and 10-year (31%) averages. The 238 troll permits participating in 2025 spring and terminal Chinook and chum salmon fisheries in May and June was similar to 2024 (237 permits) but below the recent 5-year by 10% and 10-year averages by 34%. A total of 13 spring troll fisheries targeted Chinook salmon and an additional 6 areas were open to directed chum salmon fishing. A total of 11 THA fisheries were open during the 2025 spring troll season with harvest from 8 THAs accounting for 2,779 Chinook salmon. Other species harvested during spring and terminal fisheries included 3,646 chum, 402 pink, 99 coho, and 20 sockeye salmon.

2026 SPRING TROLL FISHERIES OVERVIEW

REGULATORY CHANGES AND MANAGEMENT ACTIONS TO CONSERVE WILD STOCK CHINOOK SALMON IN THE SPRING TROLL FISHERIES

During the 2022 and 2025 SEAK BOF meetings, action plans for the King Salmon, Taku, and Stikine River and Andrew Creek stocks of Chinook salmon were adopted, giving the department direction through emergency order authority to conserve these wild SEAK Chinook salmon stocks (Hagerman et al. 2025; Salomone et al. 2022). To help reduce encounters with these stocks during spring troll fisheries, the board determined that May and June opportunities for Alaska hatchery Chinook salmon will be limited to outer coastal areas near hatcheries or hatchery release sites in Districts 1, 3, 13, and 183, THAs, and in areas that have been identified as having low proportional harvests of wild stock SEAK Chinook salmon. These measures are dictated by Chinook salmon action plans designed for the Stikine River and Andrew Creek and the Taku and King Salmon Rivers. Additional actions under the plans delay the opening of THAs until June 1 and hatchery chum salmon fishery openings until June 15. Additionally, Chinook salmon retention is prohibited in spring hatchery chum salmon fisheries prosecuted in Districts 9, 10, 12, and 14.

TIME AND AREA MODIFICATIONS

- All THAs will have initial openings on June 1, with the exception of the Neets Bay and Burnett Inlet (opening June 27), and Thomas Bay THA (opening June 21).
- The boundaries of the Hidden Falls THA have been amended by emergency order for fishing periods from July 1 to September 20.
- The Crawfish Inlet THA western boundary point on Lodge Island has been modified by emergency order to a position on the island shoreline.

SPRING TROLL FISHERY OPENINGS

Spring troll areas will be opened by emergency order based on inseason and historical timing of hatchery contributions. Maps of both spring troll areas and THAs open in 2026 are provided in the following sections (Figures 2–20). Because the 2026 preseason Chinook salmon AI (1.41) falls above the 1.15 AI threshold, as provided for under the terms of 5 AAC 29.090(d)(3), additional Chinook salmon will be transferred from the winter troll GHL to the PST harvest limits set for 2026 spring troll fisheries. Trollers should consult department advisory announcements issued each Friday for weekly area openings and fishing periods. Announcements may also be issued

throughout the week when fishery extensions or early closures are warranted. Advisory announcements can be found on the ADF&G website.¹

- **Ketchikan Area:** spring troll fisheries are scheduled to open in **Mountain Point (101-45)** and **Rock Point (101-46)** areas on June 8 (Figure 3). With the 2026 terminal run forecast for the Unuk River at the lower bound of the escapement goal range, initial openings are delayed to reduce encounters of both Unuk and Chickamin River Chinook salmon still present in these areas at this time.
- **Craig Area:** spring troll fisheries are scheduled to open in **Bucareli Bay (103-50)**, **Trocadero Bay (103-60)**, **Port Saint Nicholas (103-63)**, and **San Alberto Bay (103-70)** areas beginning the week of May 11 (Figure 8). Initial openings are delayed in 2026 to avoid elevated harvest of treaty Chinook salmon in this area prior to the run timing of Port Saint Nicholas Chinook salmon.
- **Sitka Area:** spring troll fisheries are scheduled to open in **Sitka Sound (113-41)**, and **Salisbury Sound (113-62)** beginning May 1. **Redoubt Bay (113-30)** is scheduled to open during the week of May 18. **Western Channel (113-01)**, **Goddard (113-31)**, and **West Crawfish Inlet (113-32)** will open during the week of May 24 (Figure 16). Initial openings are delayed in Redoubt Bay in 2026 to avoid elevated harvest of treaty Chinook salmon in early May to avoid potential early closure of the fishery, as occurred in 2024.
- **Yakutat Area:** a spring troll fishery is scheduled to open in **Yakutat Bay (183-10)** beginning May 1 (Figure 21). The fishery is limited by regulation to 2 days per week during May and June. The maximum harvest allowed is 1,000 Chinook salmon and management is not based on the composition of Alaska hatchery fish.
- **Hatchery chum salmon areas:** spring troll fisheries for chum salmon are scheduled to open June 15 in **Keku Strait (109-42)**, **Cross Sound (114-21)**, **South Passage (114-23)**, **Homeshore (114-25)**, **Point Couverden (114-26)**, and **Northern Chatham Strait (112-16)** (Figure 20). Retention of Chinook salmon is prohibited in these fisheries. The Point Couverden and Northern Chatham Strait fisheries may be open for up to 4 weekdays per week and are restricted to the retention of pink and chum salmon only.

DISTRICT 8 DIRECTED CHINOOK SALMON FISHERY

The 2026 preseason terminal run size forecast for Stikine River large Chinook salmon is 16,700 fish. A preseason terminal run forecast of this size provides a small allowable catch (AC) for the U.S. or Canada, as the forecast is 2,700 fish above the lower bound of the escapement goal range (EGR) of 14,000 to 28,000 fish. However, under provisions of the action plan for Stikine River and Andrew Creek Chinook salmon (Salomone et al. 2022), no directed fisheries will occur in District 8.

DISTRICT 11 DIRECTED CHINOOK SALMON FISHERY

The 2026 preseason terminal run size forecast for Taku River large Chinook salmon is 34,000 fish. A preseason terminal run forecast of this size is above the EGR of 19,000–36,000 fish. Restrictions will continue to be implemented in all District 11 fisheries. Inseason terminal run size estimates

¹ Alaska Department of Fish and Game. 2026. Commercial fisheries announcements. ADF&G releases, notices, and news. Fisheries: commercial, subsistence, and personal use. www.adfg.alaska.gov/index.cfm?adfg=cfnews.main (accessed April 2026).

may be produced starting in late May; however, directed Chinook salmon fisheries will not occur in District 11.

TERMINAL AREA TROLL FISHERIES

Consistent with directives to conserve wild stock Chinook salmon in spring troll fisheries, THA fishery openings are delayed by emergency order until June. These areas may be managed for harvest of multiple species by different gear types. Refer to the regulatory management plans for each THA.

- **Nakat Inlet (101-10):** open to troll gear from 12:01 AM, June 1 through 11:59 PM, November 10 (Figure 2). The 500-yard stream closure regulation implemented under 5 AAC 39.290(a)(2) will remain in effect in the Nakat Inlet THA, except during spring troll fisheries as specified in 5 AAC 29.150(a)(2). Chinook salmon retention is permitted only during general summer troll Chinook salmon retention periods.
- **Carroll Inlet (101-48):** open to troll gear from 12:01 AM, June 1 through 11:59 PM, June 30 for all salmon species (Figures 3 and 4). The waters north of the latitude of Nigelius Point at 55°33.50' N lat and south of the latitude of 55°34.83' N lat (approximately 1.3 nmi north of Nigelius Point) are open exclusively to troll gear from June 1 through June 7. Concurrent openings for troll, drift gillnet, and purse seine are scheduled June 1 through 12:00 noon, June 12, in the remainder of the THA. The THA will be open exclusively to troll gear from 12:00 noon, June 12 through 12:00 noon, June 15. Rotational net gear fisheries are scheduled for 24-hour openings (12:00 noon to 12:00 noon) from June 15 through June 30 (5 AAC 33.379). Refer to the 2026 Carroll Inlet THA advisory announcement for details on time and area restrictions.
- **Neets Bay (101-95):** open to troll gear from 12:01 AM, June 27 through 11:59 PM, July 31, unless closed by emergency order (5 AAC 33.370; Figure 5). Chinook salmon retention is prohibited in the Neets Bay THA. The THA will be expanded from July 1 through July 31 for troll gear to include those waters of Neets Bay east of the longitude of Chin Point at 131°42.10' W long, unless closed by emergency order. Cost recovery will be conducted from June 14 through August 31. Additional information is provided in the 2026 Neets Bay THA advisory announcement.
- **Kendrick Bay (102-15):** will not open for commercial fishing in 2026 until cost-recovery efforts are complete (5 AAC 33.377; Figure 6). Chinook salmon harvested within the Kendrick Bay THA may not be retained or sold.
- **Burnett Inlet (106-25):** open to troll gear from 12:01 AM, June 27 through 11:59 PM, July 31, unless closed by emergency order (5 AAC 33.370; Figure 7). Additional information is provided in the 2026 Neets Bay THA advisory announcement.
- **Port Saint Nicholas (103-63):** open to troll gear from 12:01 AM, June 1 through 11:59 PM, July 31 for all salmon species, unless closed by emergency order, as described in the 2026 Port Saint Nicholas THA advisory announcement (5 AAC 33.382; Figure 8).
- **Wrangell Narrows (106-44):** will not open in 2026 since the projected terminal run of 2,268 adult Chinook salmon is below the 4,000 fish threshold for prosecuting a commercial fishery (5 AAC 33.381[b][3]).
- **Anita Bay (107-35):** open continuously to troll gear from 12:01 AM, June 1 through 11:59 PM, November 10, in portions of the THA for all salmon species (5 AAC 33.383[d]; Figure

10), unless closed by emergency order. Refer to the 2026 Anita Bay THA advisory announcement for details on time and area restrictions.

- **Little Port Walter (109-10):** open to troll gear from 12:01 AM, June 1 through 11:59 PM, June 30, unless closed by emergency order. Refer to the 2026 Little Port Walter THA advisory announcement for details on time and area restrictions.
- **Gunnuk Creek (109-40):** open to troll gear from 12:01 AM, June 1 through 11:59 PM, June 30, unless closed by emergency order, as described in the 2026 Gunnuk Creek THA advisory announcement (5 AAC 40.071[c]; Figures 11 and 12).
- **Southeast Cove (109-41):** open continuously to troll gear from 12:01 AM, Monday, June 1 through 11:59 PM., Tuesday, June 30 (5 AAC 33.387; Figures 11 and 13). Beginning July 1, the THA will close to all common property fisheries until cost recovery has been completed. Common property troll opportunity in the THA is not anticipated after June 30, 2026. Additional details are provided in the Southeast Cove THA advisory announcement.
- **Thomas Bay (110-12):** open to troll gear during periods the purse seine fishery is closed from 12:01 AM, June 21 through 11:59 PM, August 8, unless closed by emergency order (Figure 14). The purse seine fishery will be open from 5:00 AM to 8:00 PM, Sunday and Thursday each week. Chinook salmon retention is permitted only during general summer troll Chinook salmon retention periods. Additional details on openings and area restrictions are described in the 2026 Thomas Bay THA advisory announcement.
- **Hidden Falls (112-22):** Since the 2026 forecast does not indicate there will be legal sized adult Chinook salmon returning to the THA, the initial opening for troll gear in the THA is delayed until July 1 in 2026 (Figure 15). Refer to the 2026 Hidden Falls THA advisory announcement for details.
- **Crawfish Inlet (113-33):** open to troll gear from 12:01 AM, June 1 through 11:59 PM, September 20 with Chinook salmon retention permitted only during June and the general summer troll Chinook salmon retention periods (5 AAC 33.380; Figures 16 and 17). Refer to the 2026 Crawfish Inlet THA advisory announcement for details on time and area restrictions.
- **Silver Bay (113-35):** open to troll gear from 12:01 AM, June 1 through 11:59 PM, July 30 for all salmon species, unless closed by emergency order (5 AAC 33.375[a]; Figures 16 and 18). Additional area restrictions are described in the 2026 Silver Bay THA advisory announcement.
- **Deep Inlet (113-38):** open to troll gear for all salmon species from June 1 through June 27. The troll fishery is open from 12:01 AM to 11:59 PM on Saturday of each week and also during periods when net fisheries are closed (Figures 17 and 20). Continuous troll fishing opportunity is provided from June 1 through June 20 in waters of the THA that are west of 135°20.75' W long. The entire THA will be closed beginning June 28 for cost recovery operations. The THA may reopen to common property fisheries following completion of cost recovery. Any future openings in the THA will be announced by emergency order. Further details can be found in the 2026 Deep Inlet THA advisory announcement. Schedule changes are made by emergency order and announced by advisory announcement (5 AAC 33.376).

2026 ALASKA HATCHERY CHINOOK RUN FORECAST

Hatchery facility managers are predicting a total run of approximately 62,320 hatchery Chinook salmon for 2026, as compared to an estimated 2025 run of 86,230 fish (Table 2). The largest hatchery runs for 2026 are expected to Bear Cove, Herring Cove, and Port Saint Nicholas. The location of Chinook salmon hatcheries and remote release sites within SEAK are presented in Figure 1.

Table 2.–2026 Alaska hatchery Chinook salmon run forecasts.

Release site	2025 total run projection	2025 total run	2026 total run projection
Ketchikan Area			
Herring Cove	13,800	14,280	9,600
Carroll Inlet	11,100	6,590	6,000
Ketchikan Creek	0	203	350
Neets Bay	0	0	0
Total	24,900	21,073	15,950
Chatham Strait			
Little Port Walter	350	246	1,100
Kasnyku Bay	20	1,008	400
Southeast Cove	550	1,386	860
Gunnuk Creek	850	516	310
Total	1,770	3,156	2,670
Craig/Klawock Area			
Port Saint Nicholas	8,800	10,557	9,200
Total	8,800	10,557	9,200
Juneau Area			
Macaulay (Fish Creek, Lena Cove, Gastineau, Auke Bay, Thane)	8,500	9,972	8,500
Total	8,500	9,972	8,500
Petersburg–Wrangell Area			
Anita Bay	8,900	13,594	6,800
Crystal Creek	2,900	2,267	2,800
City Creek	100	476	100
Total	11,900	16,337	9,700
Sitka Area			
Crawfish Inlet	1,100	1,150	500
Bear Cove	24,700	22,304	13,900
Crescent Bay	2,100	1,050	1,900
Total	27,900	24,504	16,300
Alaska hatchery Chinook totals	83,200	86,229	62,320

REGULATION SUMMARY

For information on Southeast Alaska and Yakutat commercial salmon fishing regulations, refer to the online regulation summary.²

Fishery participants are advised that regulatory modifications for time or area may occur in season by emergency order and will be announced by troll fishery advisory announcement.

² Alaska Department of Fish and Game. 2026. 2025–2028 Southeast Alaska and Yakutat commercial salmon fisheries regulations. Commercial fisheries regulations. <http://www.adfg.alaska.gov/index.cfm?adfg=fishregulations.commercial> (accessed April, 2026).

CLOSED WATERS

The Annette Islands Reserve is a federally recognized Indian reservation in Alaska. The waters within 3,000 feet of Annette Island, Ham Island, Hemlock Island, Spire Island, Walker Island, Lewis Island, and adjacent rocks and islets are designated within the fishing reserve. Fisheries within the reserve are managed by the Metlakatla Indian Community for authorized fisheries participants only.

Closed waters listed in 5 AAC 29.150 are not in effect during the spring troll fishery (5 AAC 29.150[a][2]). The waters within 500 yards of the terminus of any salmon stream are open to trolling within the framework of authorized spring troll fishery areas and fishing periods established by emergency order.

GEAR

Legal gear for the commercial spring troll fishery includes power or hand troll gurdies. From each power or hand troll gurdy, only 1 line may be operated, to which multiple leaders and hooks may be attached (5 AAC 29.120[b][1][C] and [b][2][A]).

Power trollers are limited to no more than 4 lines operated by hydraulic, electrical, or mechanical powered gurdies (5 AAC 29.120[b][1][B]). A person may not use hand troll gurdies or fishing rods to take salmon commercially on board a registered power troll vessel (5 AAC 29.120[b][1][C]).

Vessels using hand troll gear are limited to the operation of no more than 2 hand troll gurdies or 4 fishing rods (5 AAC 29.120(b)(2)[C]). A downrigger or hand troll gurdy may not be used in conjunction with a fishing rod during the spring troll season (5 AAC 29.120[b][2][B] and [g][2]).

SIZE AND LANDING REQUIREMENTS

Chinook salmon taken and retained in the spring troll fishery must measure at least 28 inches in total length (from tip of snout to tip of tail, in its natural open position) or 23 inches from the midpoint of the clethral arch to the tip of the tail (5 AAC 29.140). Undersized Chinook salmon must be returned to the water unharmed. A person may not mutilate or otherwise disfigure a Chinook salmon in any manner that would prevent the determination of the minimum size restriction.

If the department determines that Chinook salmon in a THA are predominately Alaska hatchery-produced, that THA may be closed, by emergency order, and immediately reopened with a minimum size limit for Chinook salmon of no less than 26 inches (5 AAC 29.140[d]). Any inseason change to minimum size limits will be announced by ADF&G advisory announcement. The heads of all adipose-fin-clipped salmon must remain attached to the fish until the fish are offloaded from the vessel, except as authorized by permit (5 AAC 29.140[b]). Permit holders who freeze their harvest onboard are directed to contact the department prior to fishing so that port sampling and fish ticket requirements can be discussed and necessary permits issued.

An *ADF&G Salmon Troll Exemption Permit* issued by the department for the 2026 spring troll fishery is required for catcher-processors that intend to remove heads from salmon prior to delivery of those fish (5 AAC 29.145[c]). Additional information about the exemption permit is available on the ADF&G troll web site and permits are available in local area offices. It is imperative that the department has adequate opportunity to sample Chinook salmon landed during spring fisheries. The objective of these fisheries is to target Alaska hatchery fish and ADF&G must

be able to document hatchery contribution to support keeping each area open. As such, the department will only permit the removal of heads from adipose-fin-clipped salmon taken in the Sitka Sound (113-41) spring troll area.

In District 9, 10, 12, and 14 hatchery chum salmon troll fisheries, the operator of a salmon troll vessel shall keep the fish caught in each chum salmon fishery area separate from any other fish on board the vessel (5 AAC 29.114[d]). A fish buyer shall separate fish caught in each chum salmon fishery area until delivered to the port of landing and shall issue a separate fish ticket for fish caught in each area.

REPORTING REQUIREMENTS

Separate fish tickets must be completed for fish caught in each spring troll area fished (5 AAC 29.090[k]) and those tickets must be submitted to the department within 7 days of landing (5 AAC 39.130[c]). Fish ticket requirements include an **imprint of the Commercial Fisheries Entry Commission salmon troll permit card, 5-digit salmon statistical area of harvest, start and end date of fishing, date of landing, and number of salmon recorded by species**, as well as other information required under 5 AAC 39.130. Catcher-processors delivering frozen-at-sea (FAS) product from spring fisheries are subject to the same landing regulations as all other vessels and salmon caught in each spring fishery must be segregated on board the vessel. Additionally, **a FAS vessel shall submit a fish ticket for each week fished** that documents the number and estimated pounds of salmon caught during that week and must indicate on that fish ticket that fish were frozen (5 AAC 29.145[a]). The statistical week for fish ticket reporting begins on Sunday and ends on Saturday. If a fishing trip continues beyond Saturday, a fish ticket is required that documents the start date and end date (Saturday) of fishing for that week. Effort and harvest that occur during the following weekly period (Sunday through Saturday) are reported on a separate fish ticket. FAS vessels are defined as processors by ADF&G, Department of Environmental Conservation, and Department of Revenue and as such must issue their own fish tickets imprinted with their processor code plate following reporting requirements of 5 AAC 39.130.

SPORT FISHING AND CHARTERING FROM A REGISTERED TROLL VESSEL

- A person may sport fish from a registered commercial salmon hand troll or power troll vessel (5 AAC 47.041[a]); however, a person **may not sport fish and commercial fish for salmon from the same vessel on the same day** (5 AAC 47.041[f]). A person who sport fishes from a vessel licensed for commercial salmon fishing, other than a charter vessel when paying clients are on board, shall, immediately upon bringing a salmon on board, mark the salmon by **removing its dorsal fin** (5 AAC 47.041[c]).
- Sport fishing from a commercially licensed vessel while commercially caught salmon are in possession is illegal in waters closed to commercial salmon fishing (5 AAC 47.041[d]).
- A downrigger may be used in conjunction with a fishing rod when sport fishing. However, a downrigger may **not** be used in conjunction with a fishing rod to take salmon when engaged in commercial hand trolling during spring and summer troll fisheries (5 AAC 29.120[b][2][B]).
- A **registered troll vessel may also be registered as a charter vessel**, though that vessel may not be used to commercial fish and charter on the same day (5 AAC 75.995[a][8]).

- A person **may possess sport-caught salmon** on board a commercial salmon vessel while that vessel is engaged in commercial salmon fishing only if the salmon is *preserved fish* at the time the vessel is engaged in commercial fishing (5 AAC 47.041[g]). The definition of *preserved fish* excludes unfrozen fish temporarily stored in coolers that contain ice or dry ice or fish that are lightly salted (5 AAC 75.995[a][21]).
- No person may possess sport-caught halibut aboard a vessel when other fish or shellfish aboard the vessel are destined for sale, trade, or barter (5 AAC 75.070[a]).

GROUND FISH AND HALIBUT BYCATCH INFORMATION

For information on Southeast Alaska groundfish regulations, refer to the current *Statewide Commercial Groundfish Fishing Regulations* booklet available at ADF&G area offices or online.³ For details on groundfish bycatch allowances in the troll fishery refer to the *Groundfish Bycatch in the 2026 Salmon Troll Fishery* advisory announcement issued on January 2, 2026.⁴

STATE BYCATCH ALLOWANCES

In the state waters portion of the Eastern Gulf of Alaska Area, commercial salmon trollers operating gear during an open commercial salmon fishing period may legally retain and possess incidentally taken groundfish (5 AAC 28.133). The commissioner may establish groundfish bycatch limits in the salmon troll fishery if it is deemed necessary to manage groundfish bycatch harvest within total catch limits. Allowable bycatch percentages for the 2026 spring troll fishery are provided in Table 3. The bycatch allowance for each species or species group reflects the percentage that may be retained and sold and is **based on the round weight of salmon on board**.

Table 3.–Bycatch Provisions for the 2026 Spring Salmon Troll Fishery

Species	Bycatch allowance
Lingcod	100% IBS, CSEO, NSEI and SSEIW; 50% SSEOC
Demersal Shelf Rockfish (DSR)	10%
Other rockfish	No limit on incidental harvest
Spiny dogfish	35%
Sablefish	0%
Other groundfish	No limit on incidental harvest

Note: Acronyms in use are Icy Bay Subdistrict (IBS), Central Southeast Outside (CSEO), Northern Southeast Inside (NSEI), Southern Southeast Internal Waters (SSEIW), East Yakutat (EYKT), Southern Southeast Outer Coast (SSEOC).

Groundfish taken as bycatch must be reported on an ADF&G fish ticket by **species code, 6-digit groundfish statistical area, delivery condition code, disposition code, and number of pounds landed**. Bycatch caught in excess of the allowable bycatch limit for a management area are required to be released at sea; bycatch retained and landed in excess of the allowable bycatch limit must be forfeited to the State of Alaska.

LINGCOD

Lingcod may be taken as bycatch in the commercial salmon troll fishery **only from May 16 through November 30** (5 AAC 28.113[c]). Lingcod must measure at least 27 inches from the tip

³ Alaska Department of Fish and Game. 2026. 2025–2026 Statewide commercial groundfish fishing regulations. Commercial fisheries regulations. https://www.adfg.alaska.gov/static/regulations/fishregulations/pdfs/commercial/cf_groundfish_regs_2025_2026.pdf (accessed April, 2026).

⁴ Alaska Department of Fish and Game. 2026. Groundfish bycatch in the 2026 salmon troll fishery. Commercial fisheries advisory announcements. <https://www.adfg.alaska.gov/static/applications/dfnewsrelease/1751710922.pdf> (accessed April, 2026).

of the snout to the tip of the tail, or 20.5 inches from the front of the dorsal fin to the tip of the tail. Lingcod harvest allocations for the troll fishery are set by management area and area closures will occur as allocations are taken. Inseason closures will be announced by ADF&G advisory announcement and recorded on the troll fishery and groundfish telephone hotlines. Closure announcements will be submitted for broadcast on the United States Coast Guard and National Weather Service broadcasts; however, the department cannot ensure the availability or functionality of these communication systems in all areas. For updates on lingcod area closures contact Groundfish Project staff in Sitka at (907) 747-6688 or the groundfish hotline at (907) 747-4882.

Lingcod Management Areas open to lingcod bycatch during the spring troll fishery are described in 5 AAC 28.105 and include: Icy Bay Subdistrict (IBS), Central Southeast Outside (CSEO) Section, Southern Southeast Outer Coast (SSEOC) Sector, Northern Southeast Inside (NSEI) Subdistrict, and Southern Southeast Internal Waters (SSEIW) Sector (Figure 23). A lingcod bycatch allowance, up to 100% of the round weight of salmon on board a vessel, is permitted in IBS, NSEI, SSEIW, and in CSEO spring troll areas West Crawfish Inlet (113-32), Crawfish Inlet THA (113-33), and in portions of the Goddard (113-31) and Salisbury Sound (113-62) areas.

In waters of Sitka Sound, including spring troll areas Western Channel (113-01), Sitka Sound (113-41), Silver Bay THA (113-35), Deep Inlet THA (113-38), Redoubt Bay (113-30), and portions of Goddard (113-31) and Salisbury Sound (113-62), commercial salmon trollers may retain and possess up to 2 lingcod aboard a vessel while actively fishing for salmon within waters of the Sitka Sound Special Use Area during the open CSEO lingcod season (5 AAC 28.173[a][4]); however, the amount of lingcod retained may not exceed the 100% CSEO lingcod bycatch weight allowance. Lingcod taken within this area may be retained for a permit holder's personal use only and may not be sold. Upon taking a lingcod in this area, the permit holder shall mark that lingcod for personal use by immediately removing the dorsal fin of that fish. The head of each personal use lingcod must remain attached to the fish as evidence of meeting the 27-inch minimum size restriction, until that lingcod is weighed and reported on the ADF&G troll salmon fish ticket documenting that lingcod as personal use harvest (disposition code "95").

Having taken no more than 2 lingcod outside of the Sitka Sound Special Use Area, a permit holder may fish for salmon within the Sitka Sound Special Use Area only after removing the dorsal fin of those lingcod. Vessels in possession of more than 2 lingcod may not fish for salmon in this area until those lingcod are offloaded.

The waters of the Sitka Sound Special Use Area affected by these lingcod restrictions are defined in 5 AAC 28.150(a) as waters that are enclosed on the north by lines from Kruzof Island at 57°20.50' N lat, 135°45.17' W long, to Chichagof Island at 57°22.05' N lat, 135°43.00' W long, and from Chichagof Island at 57°22.58' N lat, 135°41.30' W long, to Baranof Island at 57°22.28' N lat, 135°40.95' W long, and on the south and west by a line running from the southernmost tip of Sitka Point at 56°59.38' N lat, 135°49.57' W long, to Hanus Point at 56°51.92' N lat, 135°30.50' W long, to the green day marker in Dorothy Narrows at 56°49.28' N lat, 135°22.75' W long, to Baranof Island at 56°49.28' N lat, 135°22.60' W long (Figure 22).

Lingcod bycatch is limited to 50% by weight in the SSEOC spring troll fisheries Bucareli Bay (103-50), Trocadero Bay (103-60), Port Saint Nicholas (103-63), San Alberto (103-70), and Port Saint Nicholas THA (103-63). Lingcod taken in excess of bycatch allowances shall be reported on fish tickets as overage and forfeited to the State of Alaska.

ROCKFISH BYCATCH IN STATE WATERS

All DSR retained in excess of 10% of the round weight of salmon on board the vessel must be weighed and reported as bycatch overage on an ADF&G fish ticket. All proceeds from the sale of excess DSR bycatch taken in state waters shall be surrendered to the state (5 AAC 28.171[a]). The 7 species in the DSR assemblage are yelloweye, quillback, canary, copper, China, tiger, and rosethorn rockfish.

HALIBUT

Halibut incidentally taken during an open commercial halibut season by power and hand troll gear operated for salmon consistent with applicable state laws and regulations are legally taken and possessed (5 AAC 28.133[c]). Commercial halibut may be retained only by Individual Fishing Quota (IFQ) permit holders during the open season for halibut. Trollers making an IFQ halibut landing of 500 pounds or less of IFQ weight as determined pursuant to 50 CFR 679.40(h) are exempted from the 3-hour prior notice of landing if landed concurrently with a legal landing of salmon harvested using hand troll or power troll gear (50 CFR 679.5[I][1][iv][A]). Halibut taken incidentally during the troll fishery shall be reported on an ADF&G troll salmon fish ticket. Contact National Oceanic and Atmospheric Administration (NOAA) Fisheries for detailed information on regulations and landing requirements for the federal IFQ halibut fishery.

An individual aboard a commercial troll vessel operating **hand troll gear** for salmon may retain incidentally taken halibut for subsistence use only under the following conditions:

- There are not any commercial or sport-caught halibut on board the vessel;
- The individual possesses a Subsistence Halibut Registration Certificate issued by NOAA and is fishing in waters designated for subsistence halibut fishing;
- The vessel is not operating a number of hooks that exceeds hook limits permitted under federal subsistence fishing regulations; and
- There is not any unused halibut IFQ held by any individual on board that vessel for that regulatory area and for the vessel category from which they are fishing.

Power troll gear is not a legal gear for subsistence halibut fishing; therefore, the retention of incidentally taken halibut for subsistence use while trolling for salmon with power troll gear is prohibited.

OTHER REGULATIONS

A person aboard a vessel may not fish for groundfish with dinglebar troll or mechanical jigging machines if salmon are on board. A vessel fishing for groundfish with dinglebar troll gear must display the letter *D* and a vessel fishing for groundfish with mechanical jigging machines must display the letter *M* at all times when fishing with or transporting fish taken with dinglebar troll gear or mechanical jigging machines (5 AAC 28.135[a][4]). Letters must be displayed on both sides of the hull, cabin, or mast, in symbols at least 12 inches high and 1 inch wide that contrast with the background and in a manner that leaves the letter plainly visible and unobscured. A person may not operate a vessel that is displaying one of these letters when the vessel is being used to fish for salmon (5 AAC 28.135[c]).

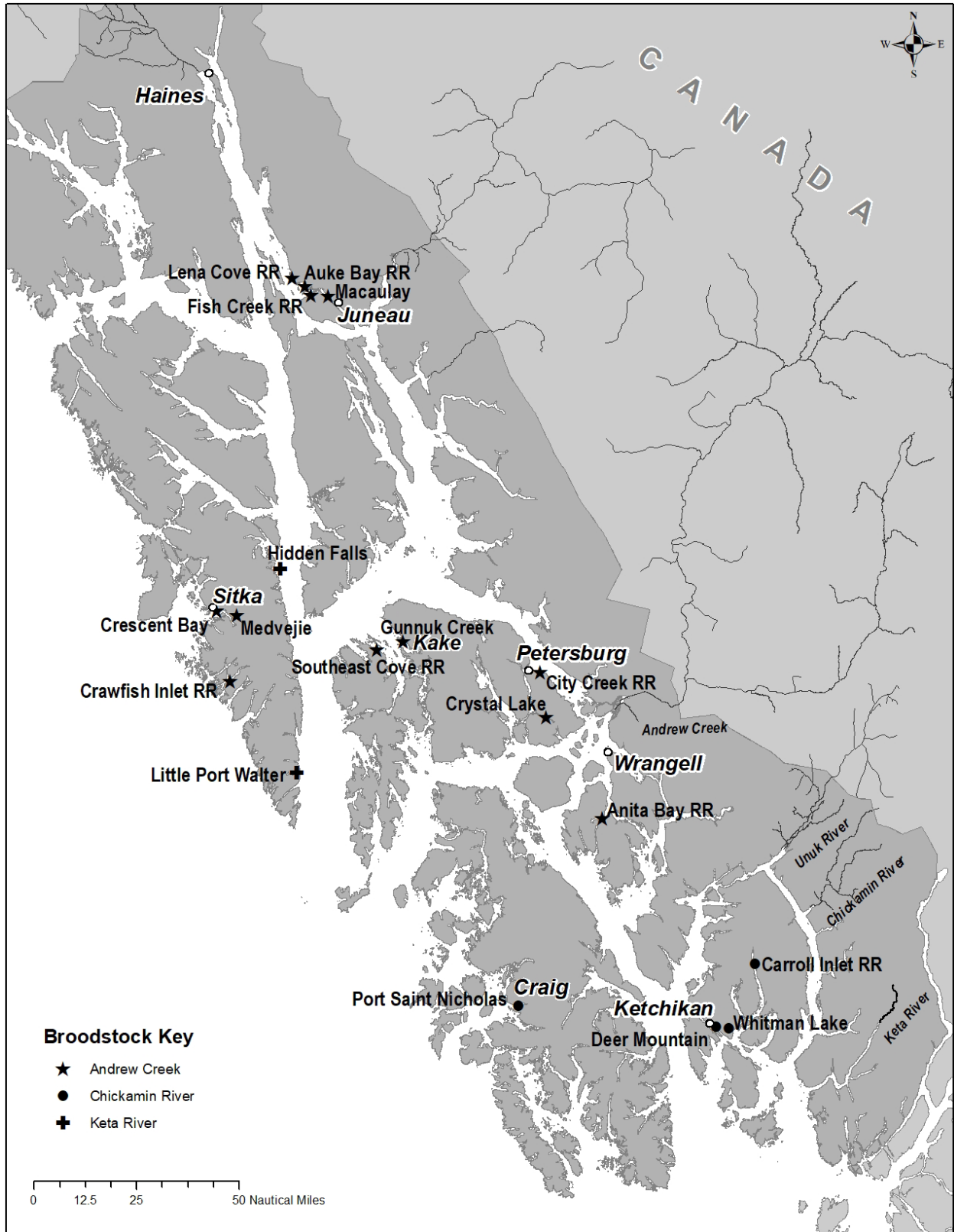


Figure 1.—Location of Chinook salmon hatcheries, remote release sites, and broodstock sources in Southeast Alaska.

2026 SPRING TROLL AREAS AND MAPS

KETCHIKAN AREAS

Nakat Inlet THA (fishery area 101-10): In the waters of Nakat Inlet north of Surprise Point at 54°49.10' N lat and west of 130°42.75' W long (Figure 2).

Mountain Point (fishery area 101-45): In the waters of George and Carroll Inlets north of a line from Mountain Point at 55°17.57' N lat, 131°32.41' W long, to Cutter Rocks Light at 55°17.34' N lat, 131°31.47' W long, to 55°17.57' N lat, 131°28.18' W long, including all waters of George Inlet and waters of Carroll Inlet south of the latitude of California Head at 55°19.57' N lat (Figure 3).

Rock Point (fishery area 101-46): In the waters of Carroll Inlet north of the latitude of California Head at 55°19.57' N lat, and south of the latitude of Nigelius Point at 55°33.50' N lat (Figure 3).

Carroll Inlet THA (fishery area 101-48): In the waters of Carroll Inlet, from June 1 to 30, the THA includes only those waters of Carroll Inlet north of the latitude of Nigelius Point at 55°33.50' N lat (Figures 3 and 4).

Neets Bay THA (fishery area 101-95): In the waters of Neets Bay east of the longitude of the easternmost tip of Bug Island at 131°39.14 W long, and west of the closed waters at the head of the bay. The closed waters at the head of the bay are those waters east of 131°29.86' W long, until the barrier net is in place; at that time, the closed waters are those waters east of the barrier net (Figure 5).

The Neets Bay THA will be expanded on July 1 to Chin Point at 131°42.10' W long (Chin Point line) for troll gear only. Chinook salmon may NOT be retained in this expanded area, as Chinook salmon retention and possession in the Neets Bay THA is prohibited for vessels operating commercial troll gear within all waters of the THA.

The THA will remain open to troll gear 12:01 AM, Saturday, June 27 through 11:59 PM, Friday, July 31 as follows, unless closed by emergency order:

12:01 AM, Friday, June 27, to 11:59 PM, Monday, June 30, east of the Bug Island line (131°39.14' W long);

12:01 AM, Tuesday, July 1, to 11:59 PM, Thursday, July 31, east of the Chin Point line (131°42.10' W long);

Kendrick Bay (fishery area 102-15): If opened for common property troll fisheries, in the waters of Kendrick Bay west of 131°59.00' W long, and the waters of McLean Arm west of 131°57.80' W long (Figure 6).

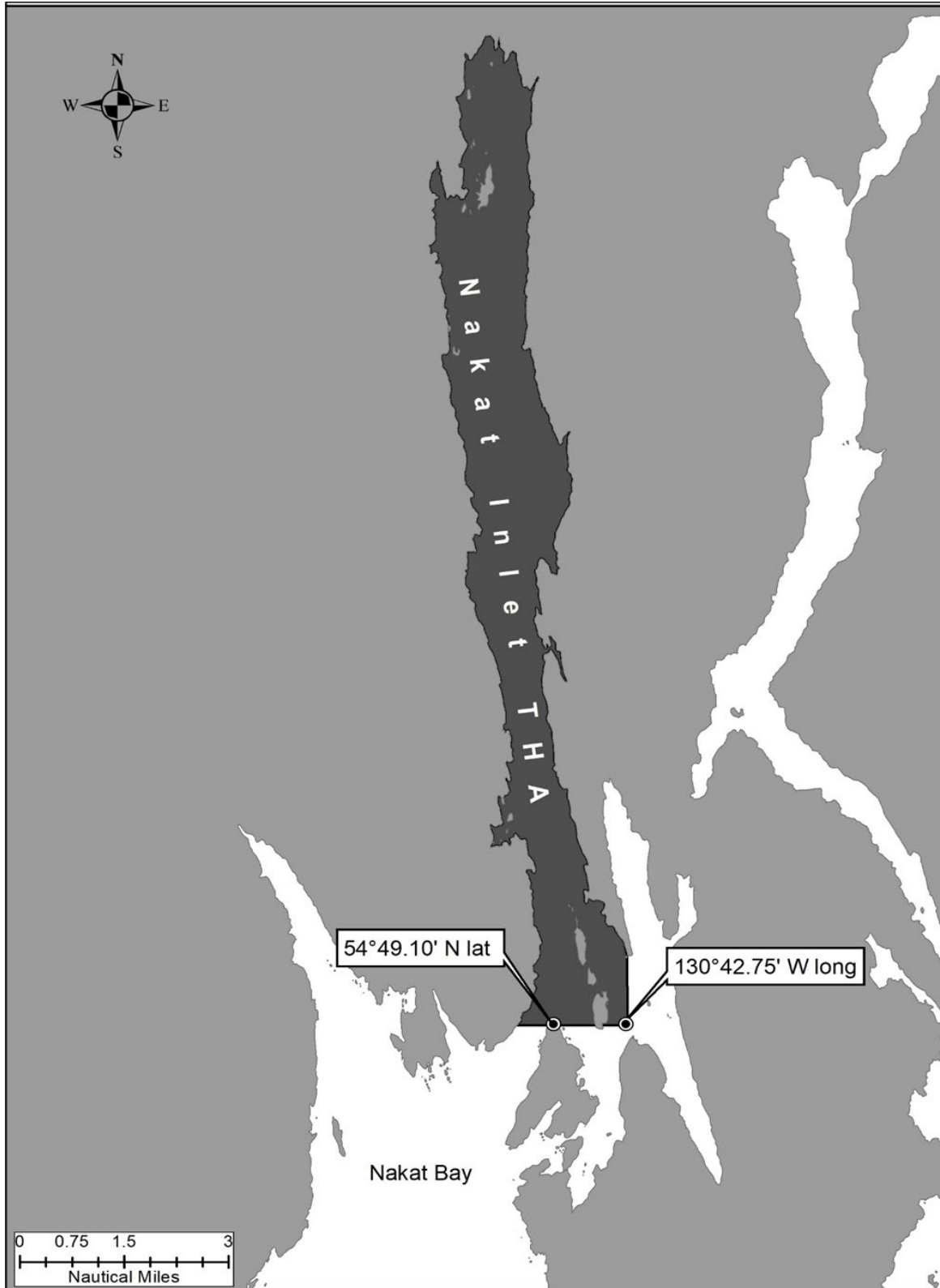


Figure 2.—Nakat Inlet Terminal Harvest Area (THA).

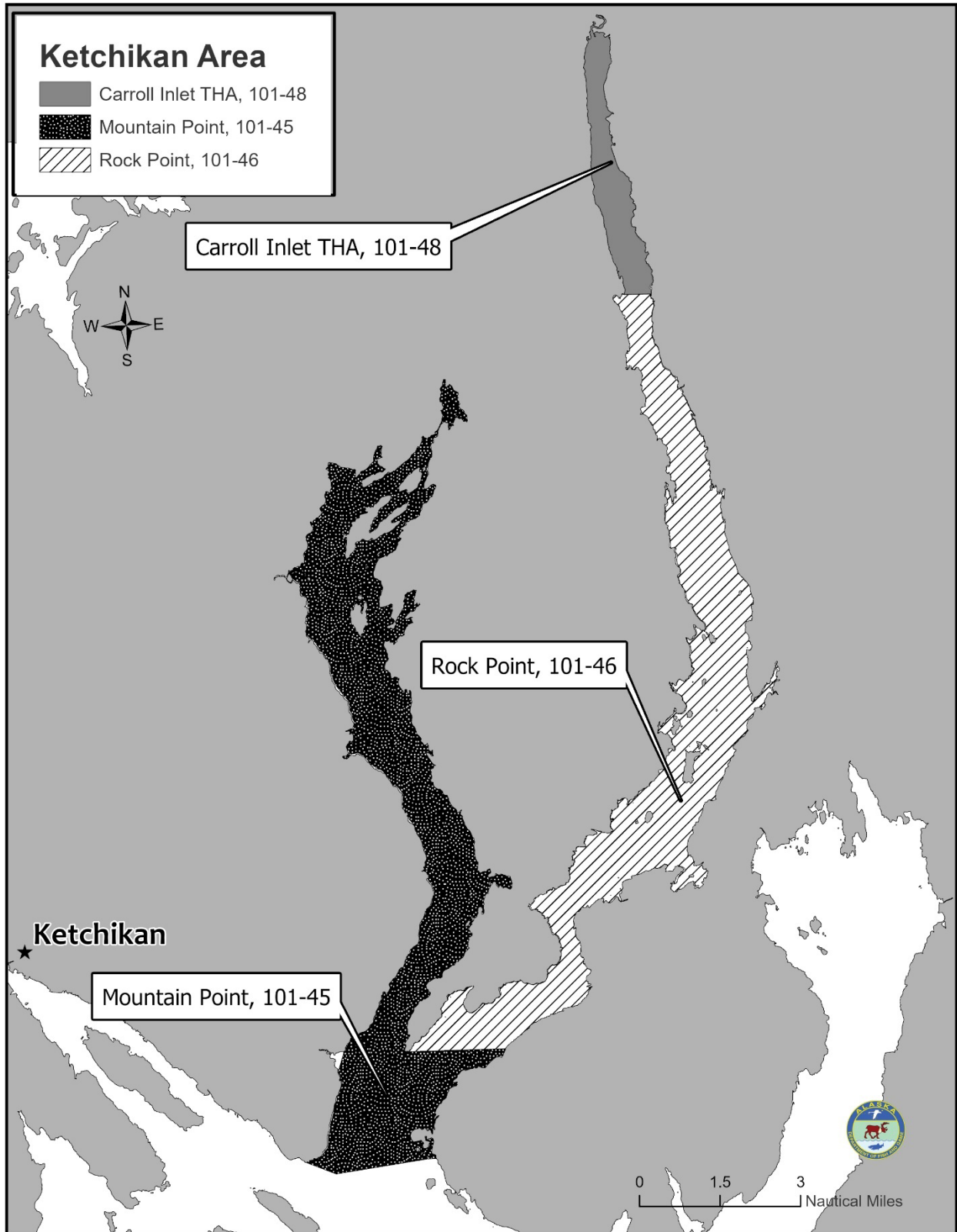


Figure 3.—Ketchikan spring troll areas and the Carroll Inlet Terminal Harvest Area (THA).

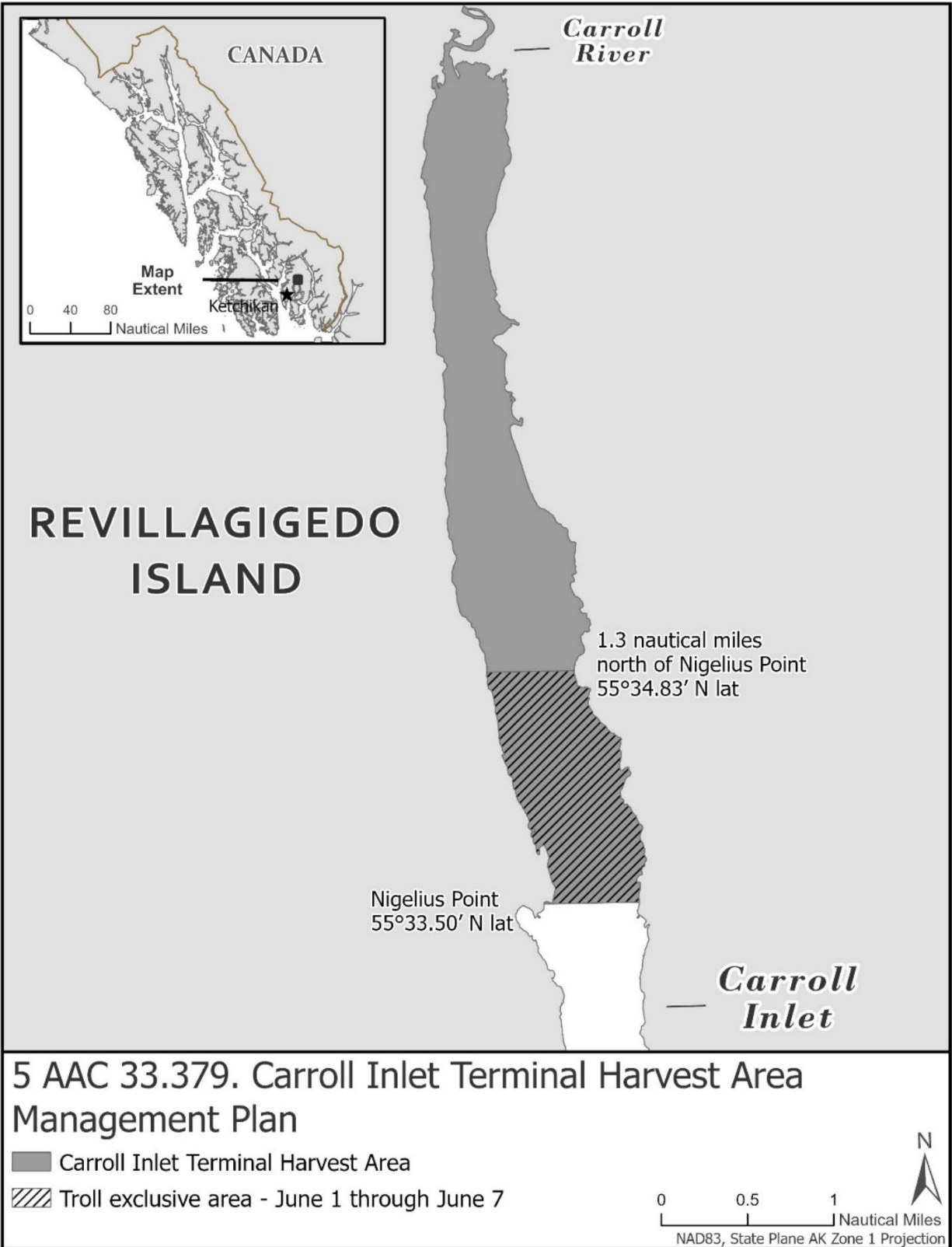


Figure 4.—Carroll Inlet Terminal Harvest Area (THA).

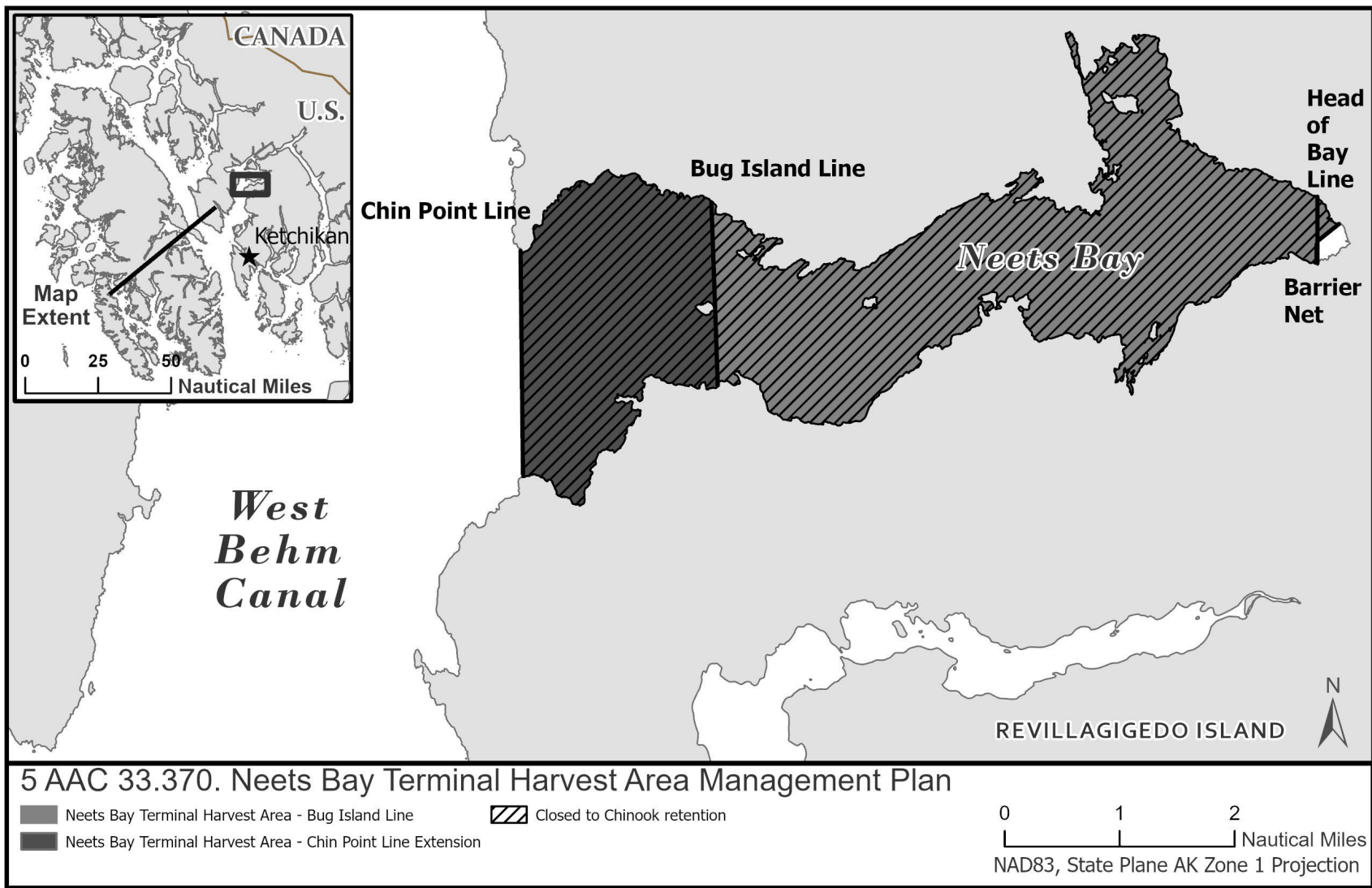


Figure 5.—Neets Bay Terminal Harvest Area (THA).

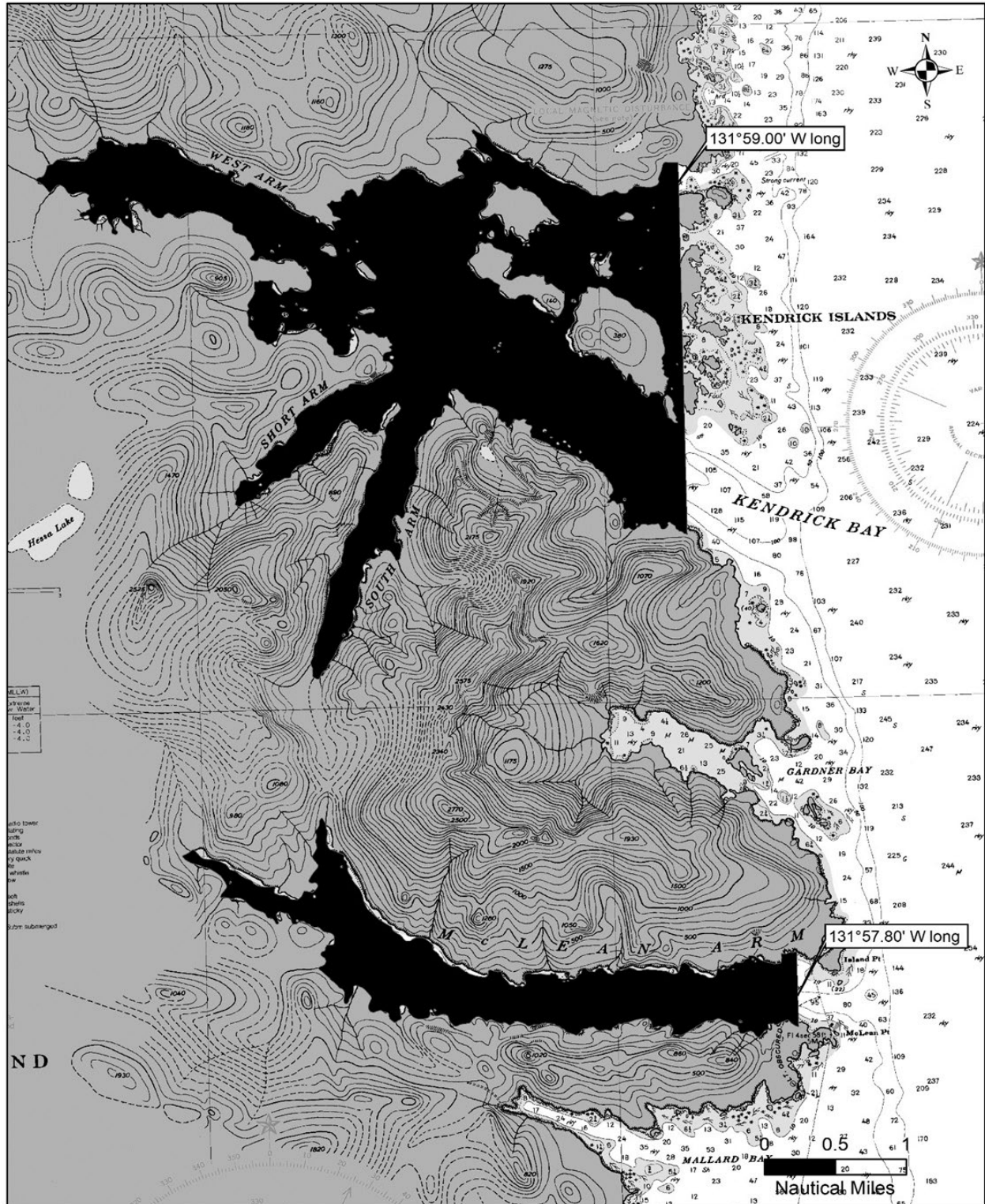


Figure 6.—Kendrick Bay Terminal Harvest Area (THA).

CRAIG AND WRANGELL AREAS

Bucareli Bay (fishery area 103-50): In the waters of Ursua Channel and Bucareli Bay south and east of a line from Cape Suspiro at 55°27.47' N lat, 133°08.50' W long, to the Ballena Island Shoal Light at 55°28.24' N lat, 133°13.25' W long, to Point Amargura at 55°27.00' N lat, 133°21.64' W long, to 55°24.67' N lat, 133°21.18' W long, to Point Providence at 55°21.51' N lat, 133°16.10' W long, and north and west of a line from Point Lomas at 55°22.67' N lat, 133°10.53' W long, to the western tip of Madre de Dios Island at 55°23.63' N lat, 133°09.65' W long, to the southernmost tip of Toti Island at 55°24.47' N lat, 133°07.45' W long, to the northernmost tip of Toti Island at 55°24.90' N lat, 133°07.34' W long, to Cape Suspiro at 55°27.47' N lat, 133°08.50' W long (Figure 8).

Trocadero Bay (fishery area 103-60): In the waters of Trocadero Bay south and east of a line from Point Lomas at 55°22.67' N lat, 133°10.53' W long, to the western tip of Madre de Dios Island at 55°23.63' N lat, 133°09.65' W long, to the southernmost tip of Toti Island at 55°24.47' N lat, 133°07.45' W long, to the northernmost tip of Toti Island at 55°24.90' N lat, 133°07.34' W long, to Point Miraballes at 55°25.85' N lat, 133°05.23' W long (Figure 8).

Port Saint Nicholas (fishery area 103-63): In the waters of Port Saint Nicholas and Bucareli Bay enclosed by a line from Cape Suspiro at 55°27.47' N lat, 133°08.50' W long, to the northernmost tip of Toti Island at 55°24.90' N lat, 133°07.34' W long, to Point Miraballes at 55°25.85' N lat, 133°05.23' W long (Figure 8).

Port Saint Nicholas THA (fishery area 103-63): In the waters of Port Saint Nicholas and Bucareli Bay enclosed by a line from Cape Suspiro at 55°27.47' N lat, 133°08.50' W long, to the northernmost tip of Toti Island at 55°24.90' N lat, 133°07.34' W long, to Point Miraballes at 55°25.85' N lat, 133°05.23' W long (Figure 9). In 2026, the waters of the Port Saint Nicholas Special Harvest Area (SHA) east of 133°02.92' W long will remain open to the common property troll fishery during cost recovery operations.

San Alberto Bay (fishery area 103-70): In the waters of Ursua Channel, San Alberto Bay, and Shinaku and Klawock Inlets east of a line from Point Polocano at 55°32.35' N lat, 133°17.36' W long, to 55°34.61' N lat, 133°16.56' W long, south and west of a line from 55°34.89' N lat, 133°10.97' W long, to 55°35.20' N lat, 133°07.07' W long, west of a line from Cemetery Point at 55°33.84' N lat, 133°06.38' W long, to the northernmost tip of Klawock Island at 55°33.41' N lat, 133°06.38' W long, and north of a line from Cape Suspiro at 55°27.47' N lat, 133°08.50' W long, to the Ballena Island Shoal Light at 55°28.24' N lat, 133°13.25' W long, to Point Amargura at 55°27.00' N lat, 133°21.64' W long (Figure 8).

Burnett Inlet THA (fishery area 106-25): In the waters of Burnett Inlet north of 56°04.65' N lat (Figure 7).

Anita Bay THA (fishery area 107-35): In the waters of Anita Bay south and west of a line from the tip of Anita Point at 56°13.68' N lat, 132°22.48' W long, to a point on the northern shore at 56°14.26' N lat, 132°23.93' W long (Figure 10).

From 12:00 AM, June 1 through 12:00 noon, June 12, the waters of the Anita Bay THA north and east of a line from 56°12.90' N lat, 132°24.51' W long, to 56°12.75' N lat, 132°23.50' W long, are open to troll gear only.

From 12:01 AM, June 15 through 11:59 PM, July 10, the waters within 0.25 nmi of the northern shoreline of Anita Bay west of a line from 56°12.33' N lat, 132°26.19' W long, to 56°12.06' N lat, 132°26.19' W long, and east of a line from 56°11.96' N lat, 132°29.57' W long, to 56°11.73' N lat, 132°29.36' W long, will be open.

NOTES:

- From June 15 through June 25, the waters of the Anita Bay THA west of 132°26.19' W long, are closed to the harvest of salmon.
- From June 26 through July 1, the waters of Anita Bay THA west of 132°26.98' W long, are closed to the harvest of salmon.
- From July 2 through July 10, the waters of Anita Bay THA west of 132°28.00' W long, are closed to the harvest of salmon.

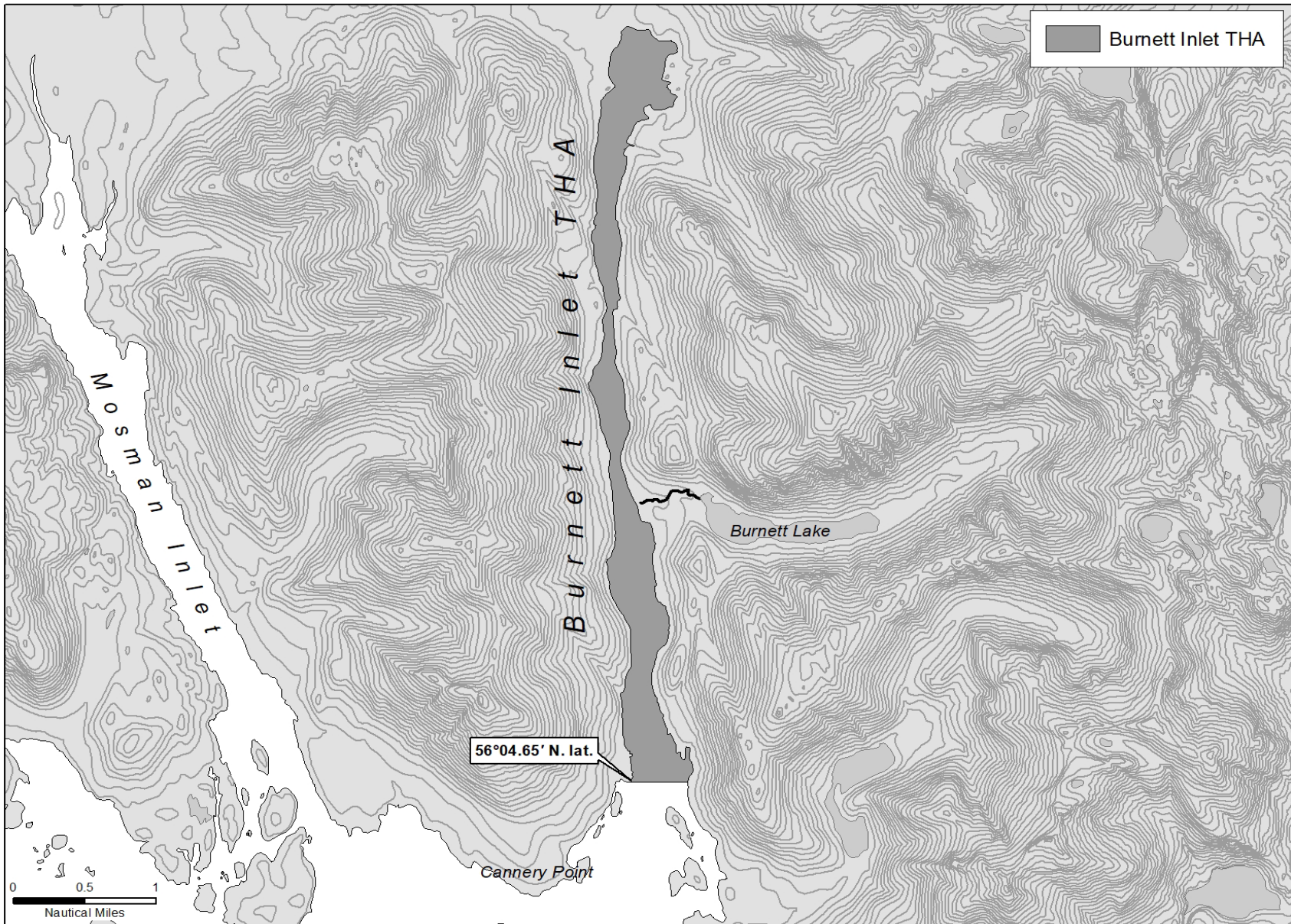


Figure 7.—Burnett Inlet Terminal Harvest Area (THA).

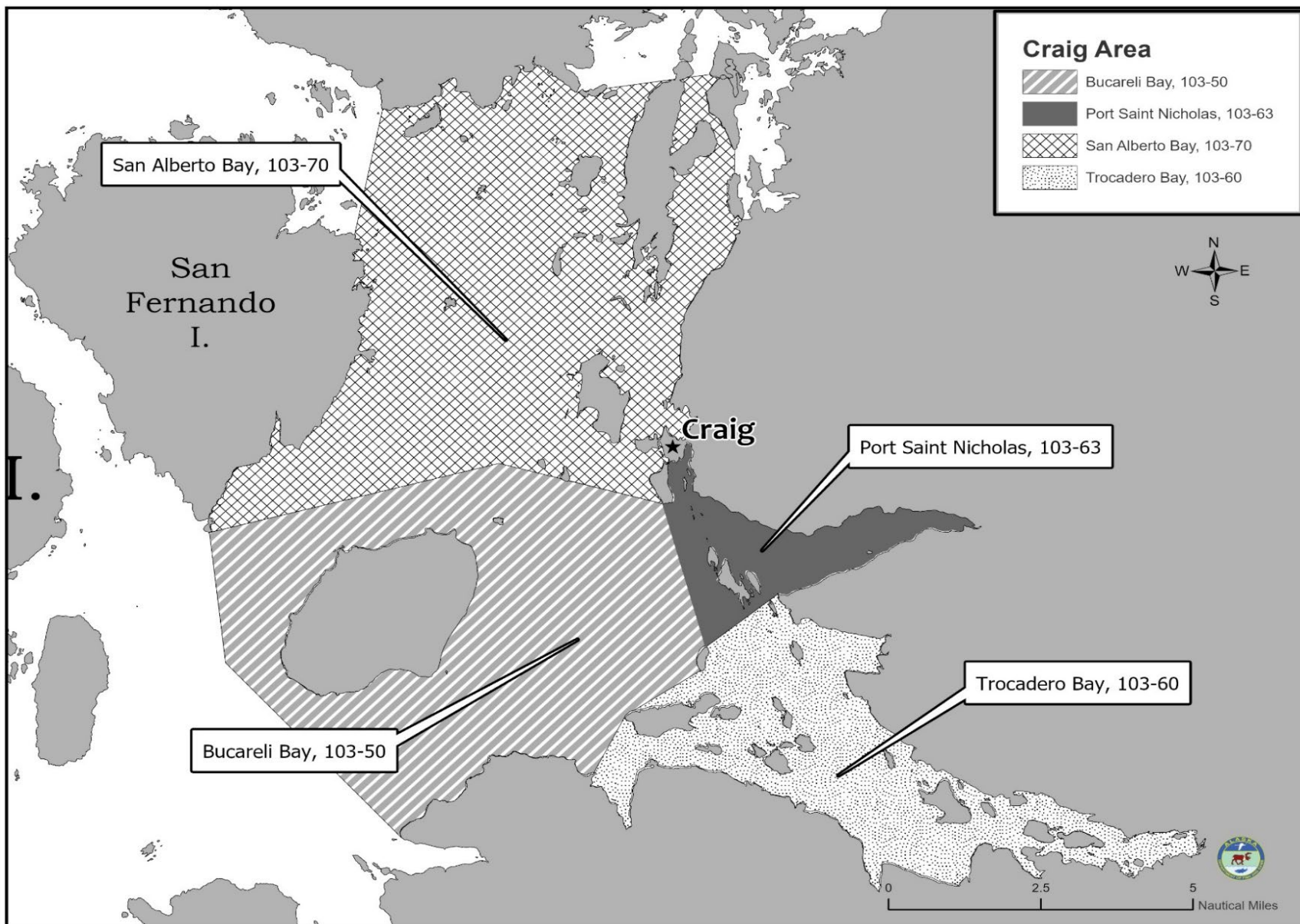


Figure 8.-Craig spring troll areas.

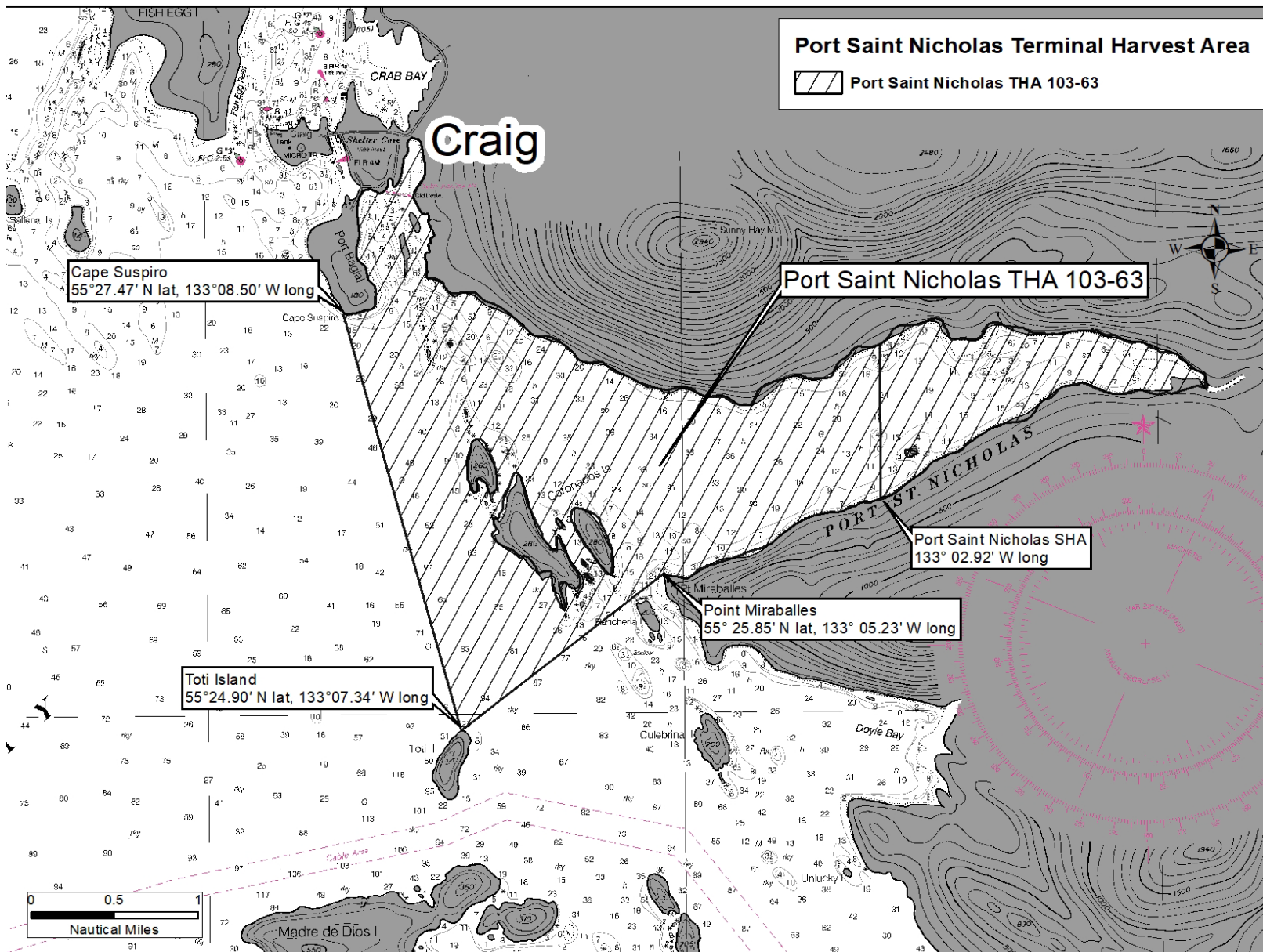


Figure 9.—Port Saint Nicholas Terminal Harvest Area (THA).

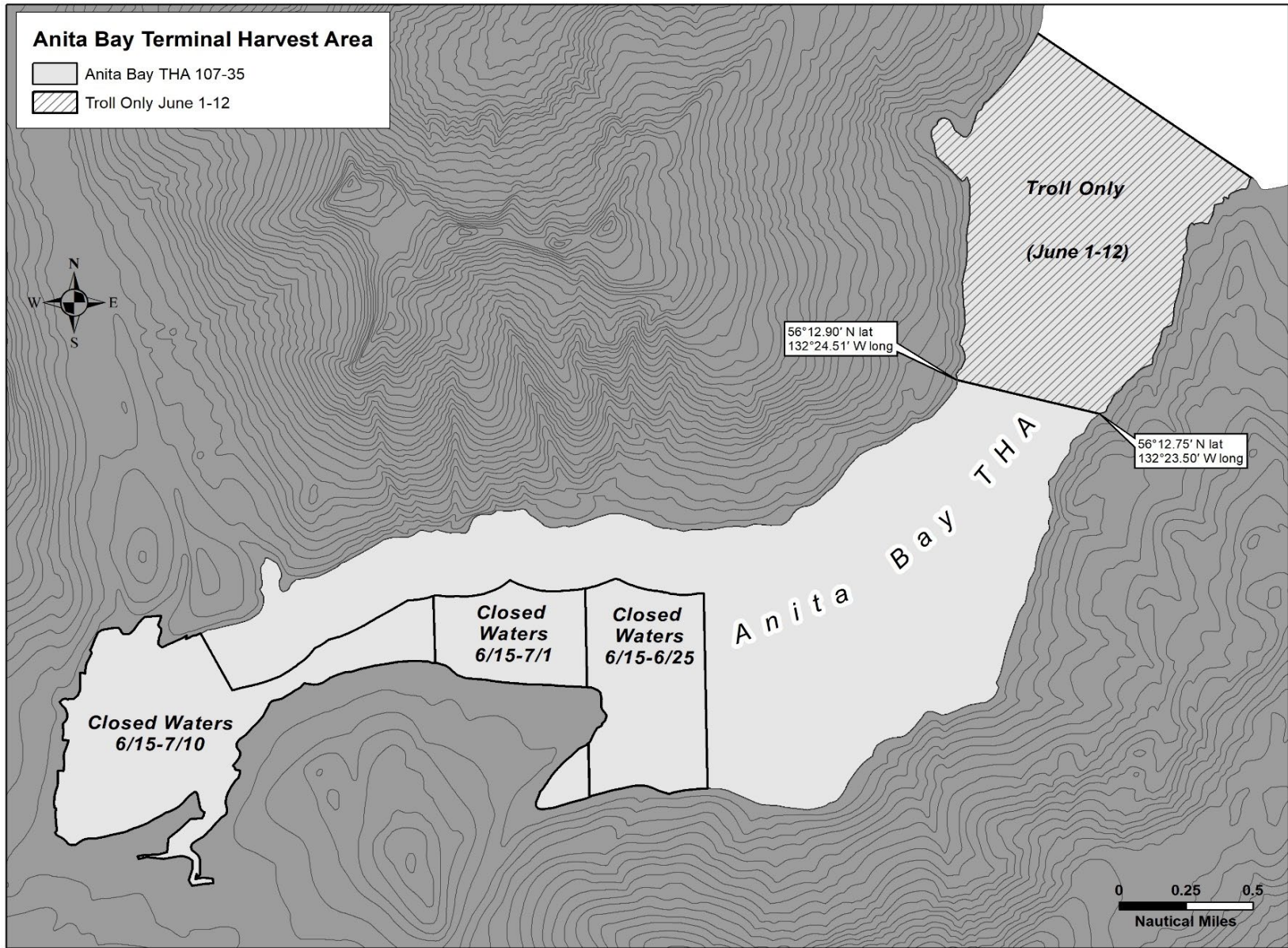


Figure 10.—Anita Bay Terminal Harvest Area (THA).

FREDERICK SOUND AND CHATHAM STRAIT AREA

Little Port Walter THA (fishery area 109-10) In the waters of Port Walter and Little Port Walter, west of a line from 56°24.14' N lat, 134° 38.05' W long to 56°23.14' N lat, 134° 38.01' W long (Figure 11).

Gunnuk Creek THA (fishery area 109-40): In the waters of Keku Strait enclosed by a line from a point northwest of Kake at 56°58.92' N lat, 133° 57.48' W long, to the southernmost tip of the southern Mosquito Island at 56°58.22' N lat, 133°58.85' W long, to the northwest tip of Hamilton Island at 56°56.45' N lat, 133°55.66' W long, to Wooten's Dock at 56°57.55' N lat, 133°54.78' W long (Figures 12 and 13).

Southeast Cove THA (fishery area 109-41): In the waters of Keku Strait enclosed by a line from a rocky point on the northern end of Kuiu Island located on the east side of Southeast Cove at 56°52.92' N lat, 134°01.49' W long, to the northern tip of Hound Island at 56°53.12' N lat, 133°56.83' W long, then northwest connecting points along the northern shore of Keku Islands at 56°53.98' N lat, 133°57.69' W long, to 56°55.85' N lat, 134°01.00' W long, to 56°55.85' N lat, 134°02.21' W long, to 56°55.20' N lat, 134°02.66' W long, then to the northwest corner of Payne Island at 56°57.40' N lat, 134°08.82' W long, then south to a point on Kuiu Island at 56°55.02' N lat, 134°09.26' W long (Figures 12 and 14).

Keku Strait Hatchery Chum Salmon Area (fishery area 109-42): In the waters of Districts 9 and 10 enclosed by a line extending from Cornwallis Point Light at 56°55.92' N lat, 134°16.41' W long to a point approximately 1.0 nmi north of Cornwallis Point Light at 56°56.80' N lat, 134°16.41' W long, to West Pinta Rocks Light at 57°05.17' N lat, 134°00.72' W long, to Cape Bendel at 57°04.27' N lat, 134°00.72' W long, and in waters west of a line from Point Camden at 56°48.58' N lat, 133°53.14' W long, to Salt Point Light at 56°50.69' N lat, 133°52.01' W long. Waters of the Southeast Cove THA and the Gunnuk Creek SHA are excluded (Figure 12).

Thomas Bay THA (fishery area 110-12): In the waters of Thomas Bay northeast of a line from Point Vandeput at 57°00.96' N lat, 133°00.02' W long, to Wood Point at 56°59.55' N lat, 132°56.96' W long, northwest of a line from a point on the mainland shoreline at 56°59.57' N lat, 132°54.02' W long, to Ruth Island at 57°00.42' N lat, 132°51.07' W long, north of a line from a point on the southeastern shoreline of Ruth Island at 56°58.70' N lat, 132°49.16' W long, to the mainland shoreline at 56°58.70' N lat, 132°47.32' W long, west of a line from the mainland shoreline at 56°59.38' N lat, 132°47.60' W long, to the southern tip of Spray Island at 56°59.80' N lat, 132°47.73' W long, to the northern tip of Spray Island at 57°00.07' N lat, 132°47.80' W long, to the mainland shoreline at 57°00.56' N lat, 132°47.57' W long, and south of a line from 57°03.00' N lat, 132°49.62' W long, to 57°03.00' N lat, 132°52.03' W long.

The waters of Spurt Cove are closed northwest of a line from 57°01.98' N lat, 132°52.49' W long, to 57°02.08' N lat, 132°52.37' W long. Waters northeast of a line from the northern tip of Spray Island at 57°00.07' N lat, 132°47.80' W long, to a point on the northern boundary line approximately 0.5 nmi from the mainland shoreline at 57°03.00' N lat, 132°50.55' W long, are closed Saturdays and Sundays of each week (Figure 15).

Hidden Falls THA (fishery area 112-22): For 2026, the THA will be **closed to commercial salmon troll gear during spring troll fisheries through June 30 (Figure 16)**

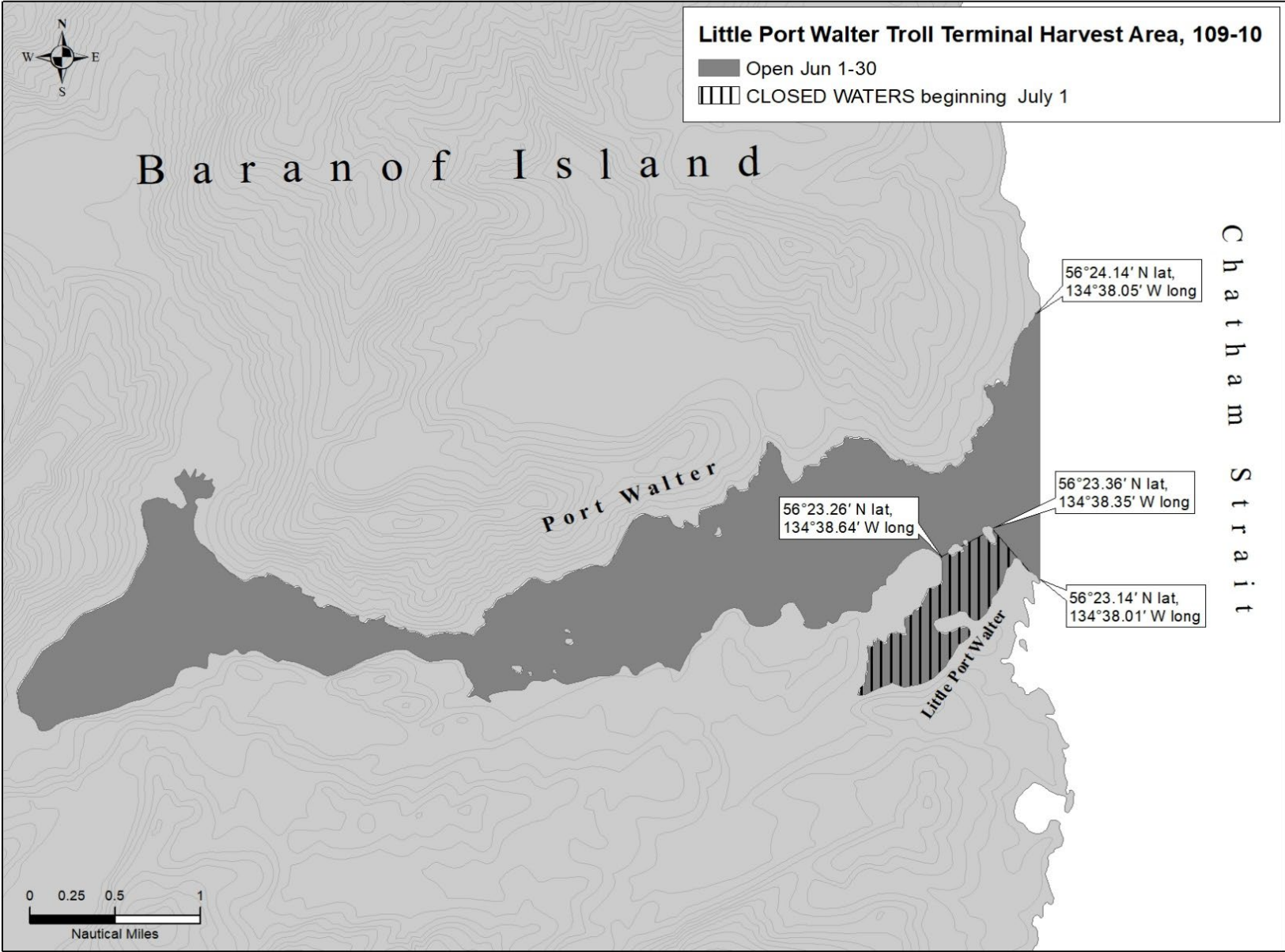


Figure 11.—Little Port Walter Terminal Harvest Area (THA)

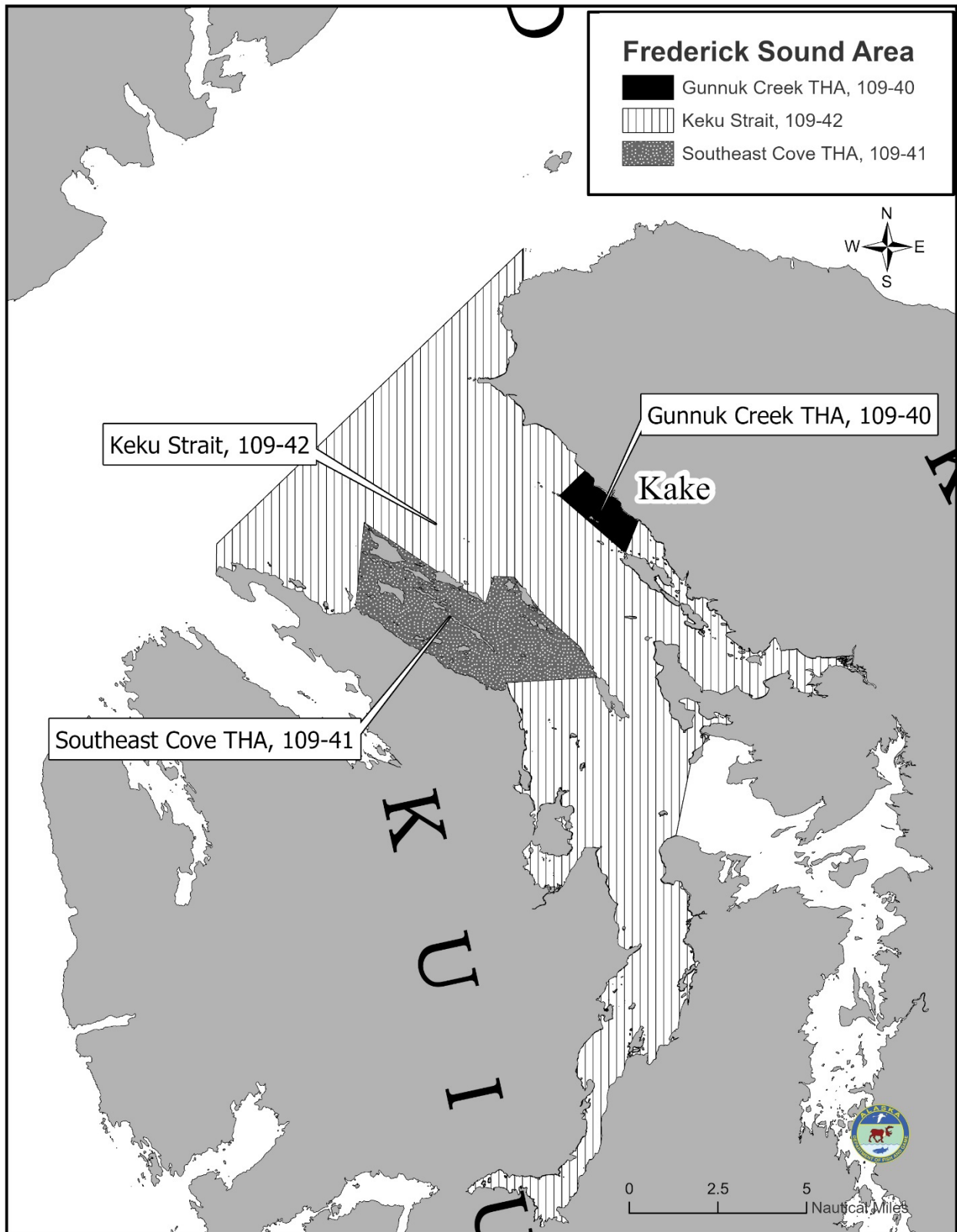


Figure 12.—Frederick Sound spring troll areas and Terminal Harvest Areas (THAs).

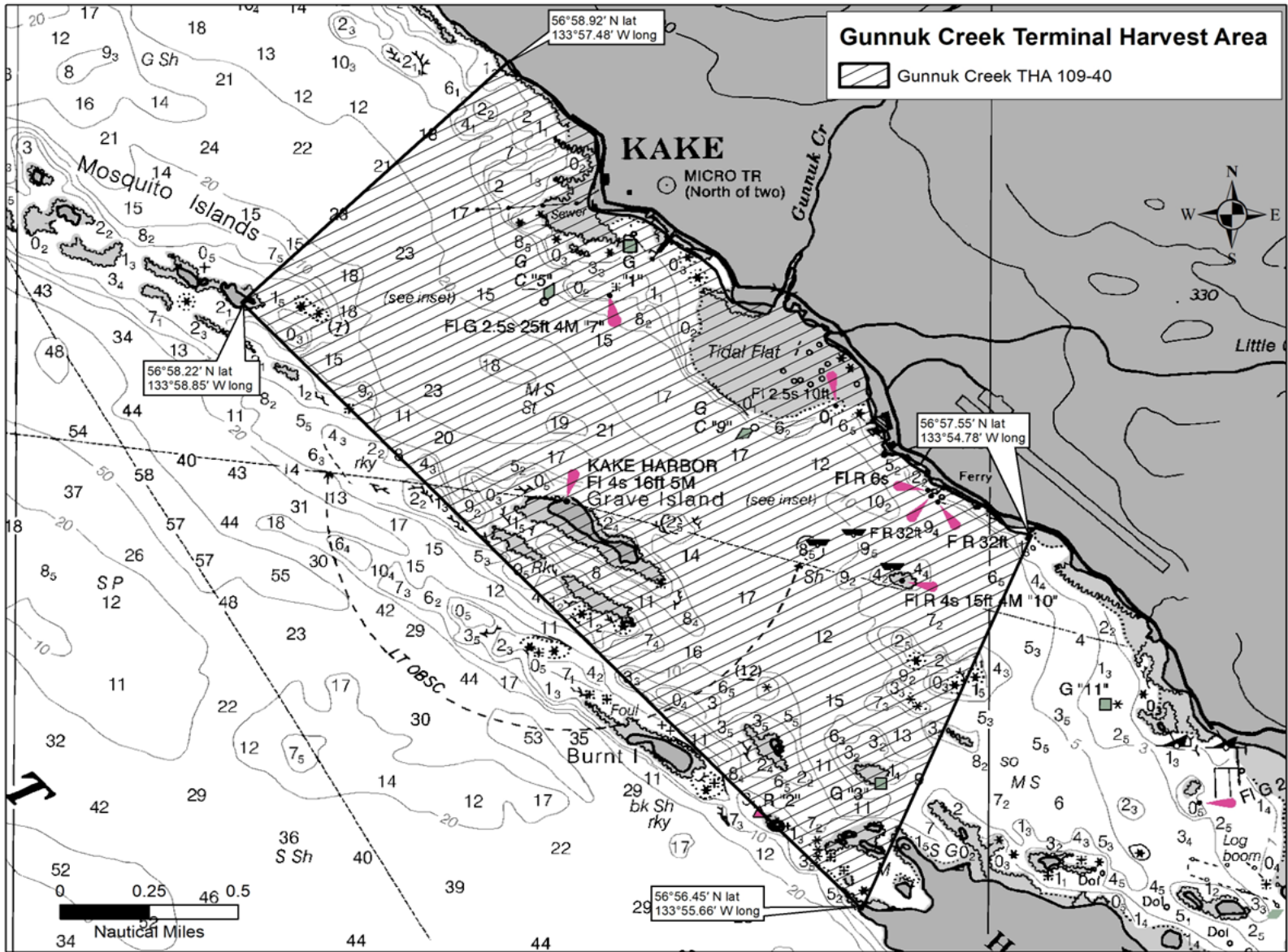


Figure 13.—Gunnuk Creek Terminal Harvest Area (THA).

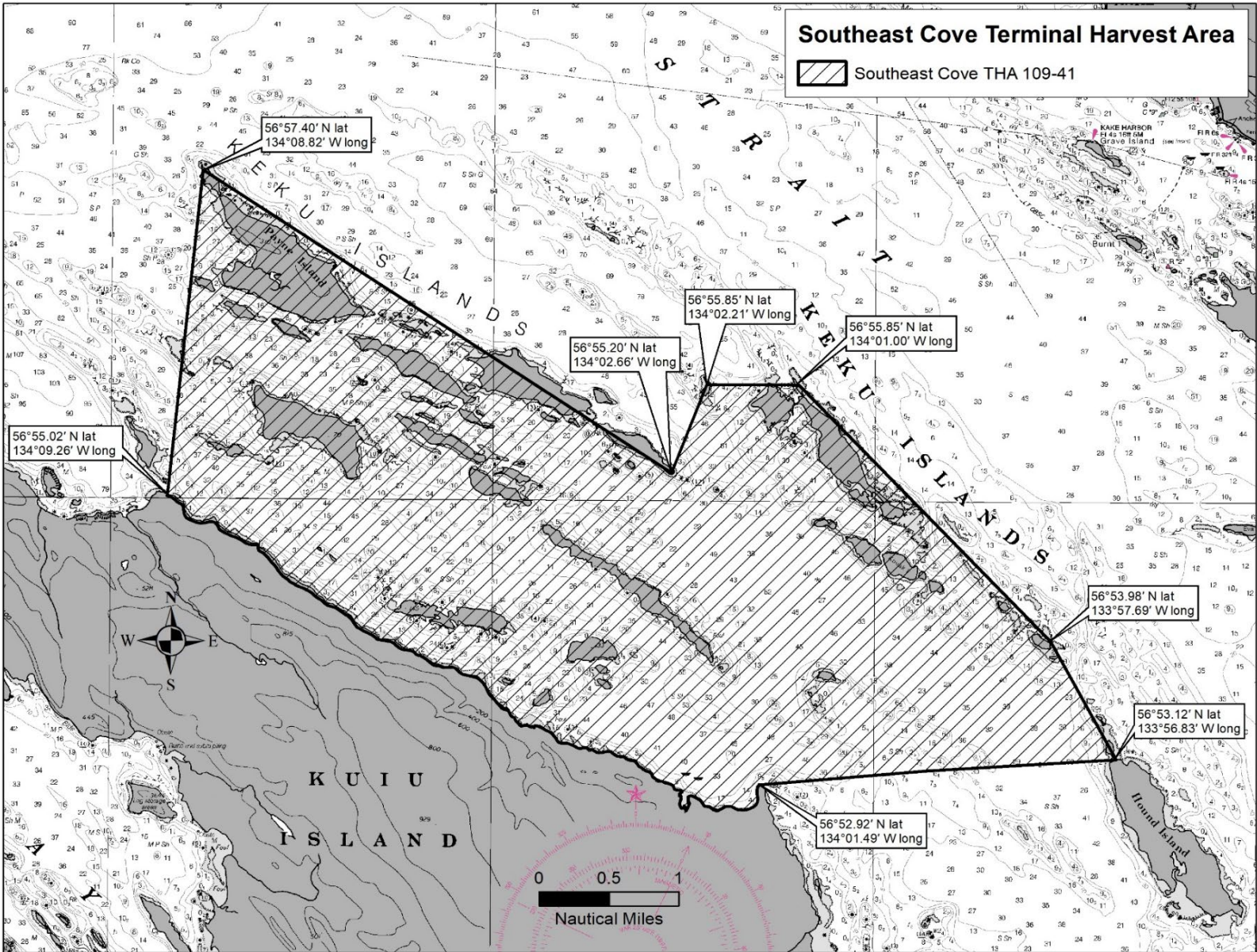


Figure 14.—Southeast Cove Terminal Harvest Area (THA).

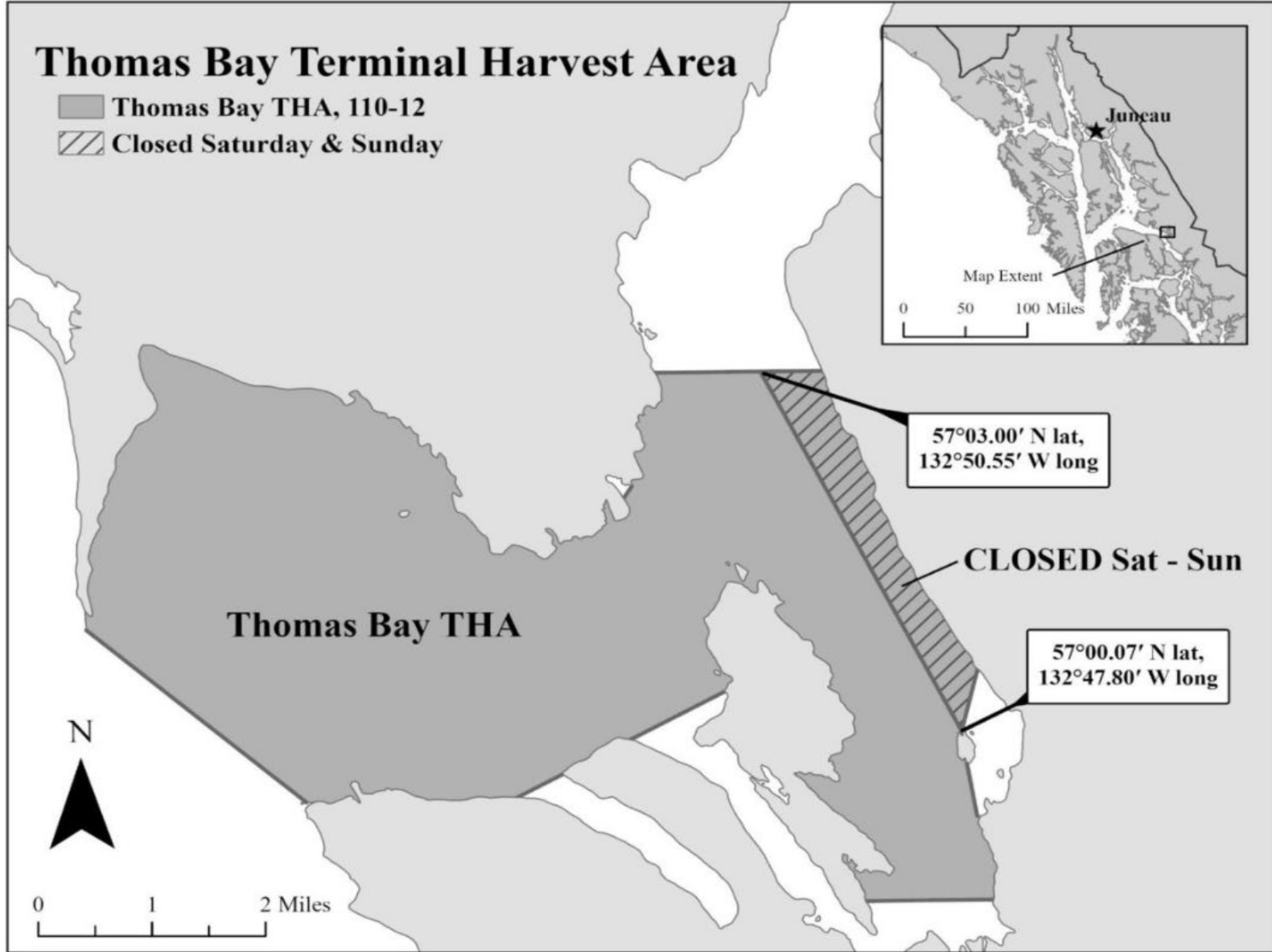


Figure 15.—Thomas Bay Terminal Harvest Area (THA).

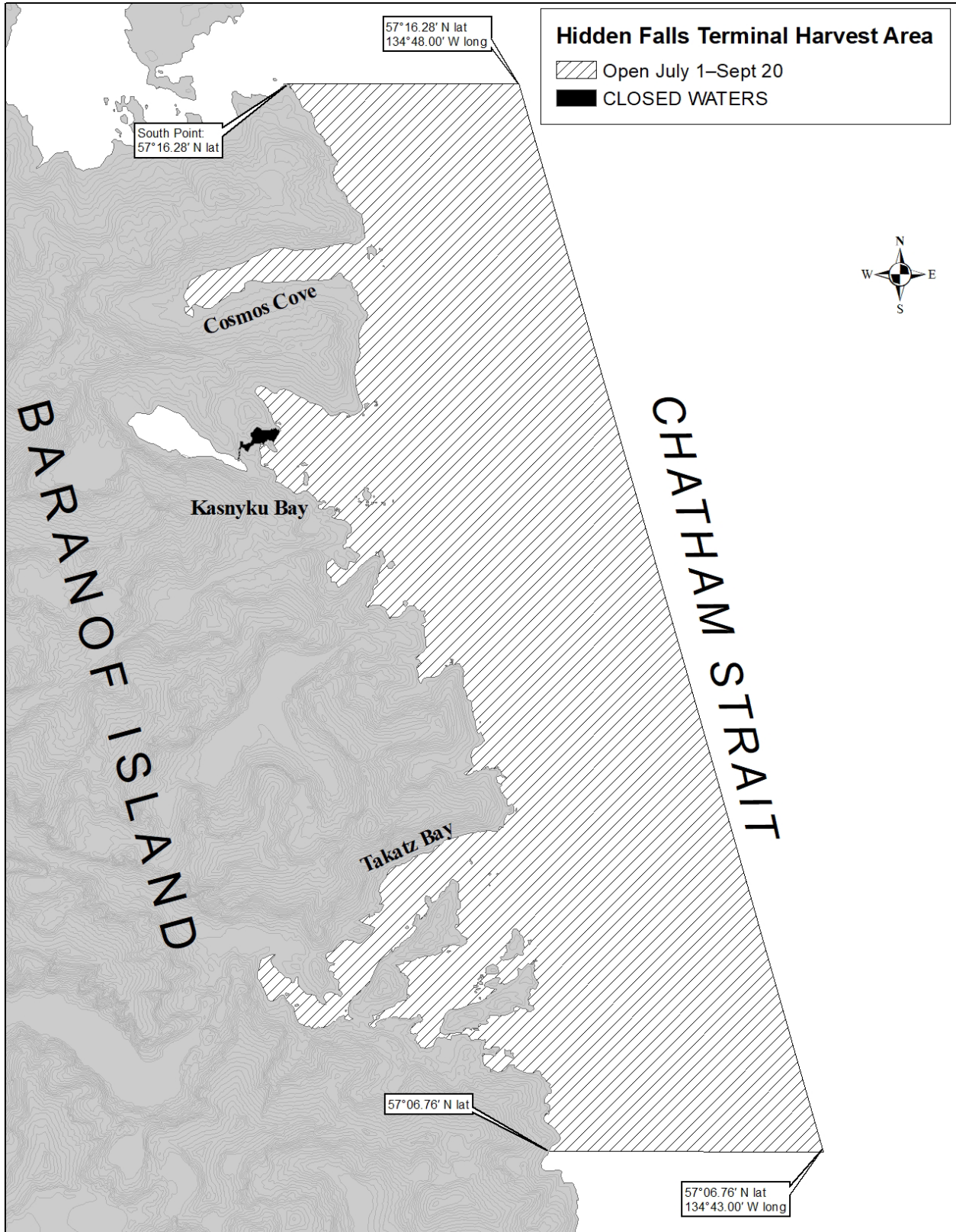


Figure 16.—Hidden Falls Terminal Harvest Area (THA).

SITKA AREAS

Western Channel (fishery area 113-01): In the waters of Sitka Sound northeast of a line from Kulichkof Rock at 56°59.48' N lat, 135°26.65' W long, to Vitskari Island Light at 57°00.00' N lat, 135°32.71' W long to a point on Kruzof Island at 57°03.42' N lat, 135°36.08' W long, southwest of a line from a point on Kruzof Island at 57°05.02' N lat, 135°35.06' W long, to 57°01.50' N lat, 135°24.25' W long (the intersection of a line from a point on Kruzof Island at 57°05.02' N lat, 135°35.06' W long, through The Eckholms Light, with a line from the southernmost tip of Makhnati Island to Kulichkof Rock), to Kulichkof Rock at 56°59.48' N lat, 135°26.65' W long (Figure 17).

Redoubt Bay (fishery area 113-30): In the waters of Sitka Sound south of a line from the westernmost tip of Cape Burunof at 56°59.04' N lat, 135°23.21' W long to Kulichkof Rock at 56°59.48' N lat, 135°26.65' W long, and east of a line from Kulichkof Rock at 56°59.48' N lat, 135°26.65' W long, to the northwesternmost point on Peisar Island at 56°53.72' N lat, 135°26.85' W long, and from the southernmost point on Peisar Island at 56°52.75' N lat, 135°25.94' W long, to the southernmost point on Viesokoi Rock at 56°52.15' N lat, 135°25.01' W long, to a point on Baranof Island at 56°51.40' N lat, 135°23.49' W long (Figure 17).

Goddard (fishery area 113-31): In the waters enclosed by a line from Baranof Island at 56°51.40' N lat, 135°23.49' W long, to the southernmost point on Viesokoi Rock at 56°52.15' N lat, 135°25.01' W long, to the southernmost point on Peisar Island at 56°52.75' N lat, 135°25.94' W long, and from a point on Peisar Island at 56°53.00' N lat, 135°26.44' W long, to Middle Rock at 56°50.91' N lat, 135°27.19' W long, to a point on Maid Island at 56°50.25' N lat, 135°27.74' W long, to the northwesternmost tip of Legma Island at 56°50.07' N lat, 135°27.19' W long, and from a point on the eastern shore of Legma Island at 56°49.20' N lat, 135°26.93' W long to the northern tip of Pishak Island at 56°48.68' N lat, 135°26.21' W long, to a point on Elovoi Island at 56°48.91' N lat, 135°24.89' W long, and north and west of a line from Elovoi Island at 56°49.44' N lat, 135°23.15' W long, to a point on Baranof Island at 56°49.59' N lat, 135°22.59' W long (Figure 17).

West Crawfish Inlet (fishery area 113-32): In the waters of West Crawfish Inlet, First Narrows, and Second Narrows northeast of a line from 56°46.60' N lat, 135°18.53' W long, to 56°43.30' N lat, 135°17.80' W long, excluding all waters of the Crawfish Inlet THA east of a line from 56°44.21' N lat, 135°15.76' W long, to 56°43.30' N lat, 135°17.80' W long and south of Cedar Pass at 56°47.14' N lat (Figures 17 and 18).

Crawfish Inlet THA (fishery area 113-33): As modified by emergency order, in the waters east of a line from 56°44.21' N lat, 135°15.76' W long, to 56°43.30' N lat, 135°17.80' W long, to 56°41.93' N lat, 135°17.54' W long, to 56°41.14' N lat, 135°13.80' W long, including the waters of Jamboree Bay, Cedar Pass south of 56°47.14' N lat, and Crawfish Inlet west of 135°11.05' W long. Waters of the SHA east of 135°11.05' W long are closed to all common property fishing for the 2026 season (Figures 17 and 18).

Silver Bay THA (fishery area 113-35): In the waters of Silver Bay east of a line from Entry Point Light at 57°01.96' N lat, 135°15.01' W long, to Silver Point at 57°00.80' N lat, 135°18.09' W long. The **waters of Bear Cove are closed** east of a line from a point on the south shore at 57°00.77' N lat, 135°09.08' W long, to the north shore at 57°00.94' N lat, 135°09.23' W long (Figures 17 and 19).

Sitka Sound (fishery area 113-41): In the waters of Sitka Sound, Krestof Sound, and Neva Strait south of 57°15.00' N lat, and north and east of a line from the westernmost tip of Cape Burunof at 56°59.04' N lat, 135°23.21' W long, to Kulichkof Rock at 56°59.48' N lat, 135°26.65' W long, to 57°01.50' N lat, 135°24.25' W long (the intersection of a line from a point on Kruzof Island at 57°05.02' N lat, 135°35.06' W long, through The Eckholms Light, with a line from the southernmost tip of Makhnati Island to Kulichkof Rock), to a point on Kruzof Island at 57°05.02' N lat, 135°35.06' W long, including the waters of Nakwasina Passage, Nakwasina Sound, and Katlian Bay. **The waters of the Silver Bay and Deep Inlet THAs, as described in this section, are included in the Sitka Sound spring troll area through May 31. These areas will open as the Silver Bay and Deep Inlet THAs beginning June 1. The waters of Bear Cove east of a line from a point on the south shore at 57°00.77' N lat, 135°09.08' W long, to the north shore at 57°00.94' N lat, 135°09.23' W long are closed to commercial salmon troll gear (Figure 17).**

Deep Inlet THA (fishery area 113-38): In the waters of Deep Inlet, Aleutkina Bay, and contiguous waters south of a line from a point west of Pirate Cove at 56°59.35' N lat, 135°22.63' W long, to the westernmost tip of Long Island at 56°59.98' N lat, 135°21.93' W long, to the easternmost tip of Long Island at 56°59.95' N lat, 135°20.37' W long, to the westernmost tip of Emgeten Island at 57°00.08' N lat, 135°20.01' W long, to the westernmost tip of Error Island at 57°00.54' N lat, 135°19.50' W long, to the westernmost tip of Berry Island at 57°00.32' N lat, 135°18.68' W long, to the southernmost tip of Berry Island at 57°00.28' N lat, 135°18.52' W long, to the westernmost tip of the southernmost island in the Kutchuma Island group at 57°00.14' N lat, 135°18.27' W long, to the easternmost tip of the southernmost island in the Kutchuma Island group at 57°00.06' N lat, 135°17.95' W long, to the westernmost tip of an unnamed island at 57°00.29' N lat, 135°17.66' W long, to a point on the southern side of the unnamed island at 57°00.07' N lat, 135°16.80' W long, to a point on the Baranof Island shore at 56°59.93' N lat, 135°16.53' W long. (Figures 17 and 20).

From June 1 through June 20, the waters of the Deep Inlet THA west of 135°20.75' W long, are open continuously to troll gear as part of the THA, with waters east of 135°20.75' W long, open to troll gear when net fisheries are closed. On June 21, all waters of the Deep Inlet THA will follow the rotational schedule with troll openings occurring on Saturdays and during those periods when net gear is closed.

Salisbury Sound (fishery area 113-62): In the waters of Peril Strait south of the latitude of Pogibshi Point at 57°30.50' N lat, and in waters of Salisbury Sound east of 135°46.00' W long, including Sukoi Inlet and waters of Neva Strait north of 57°15.00' N lat (Figure 17).

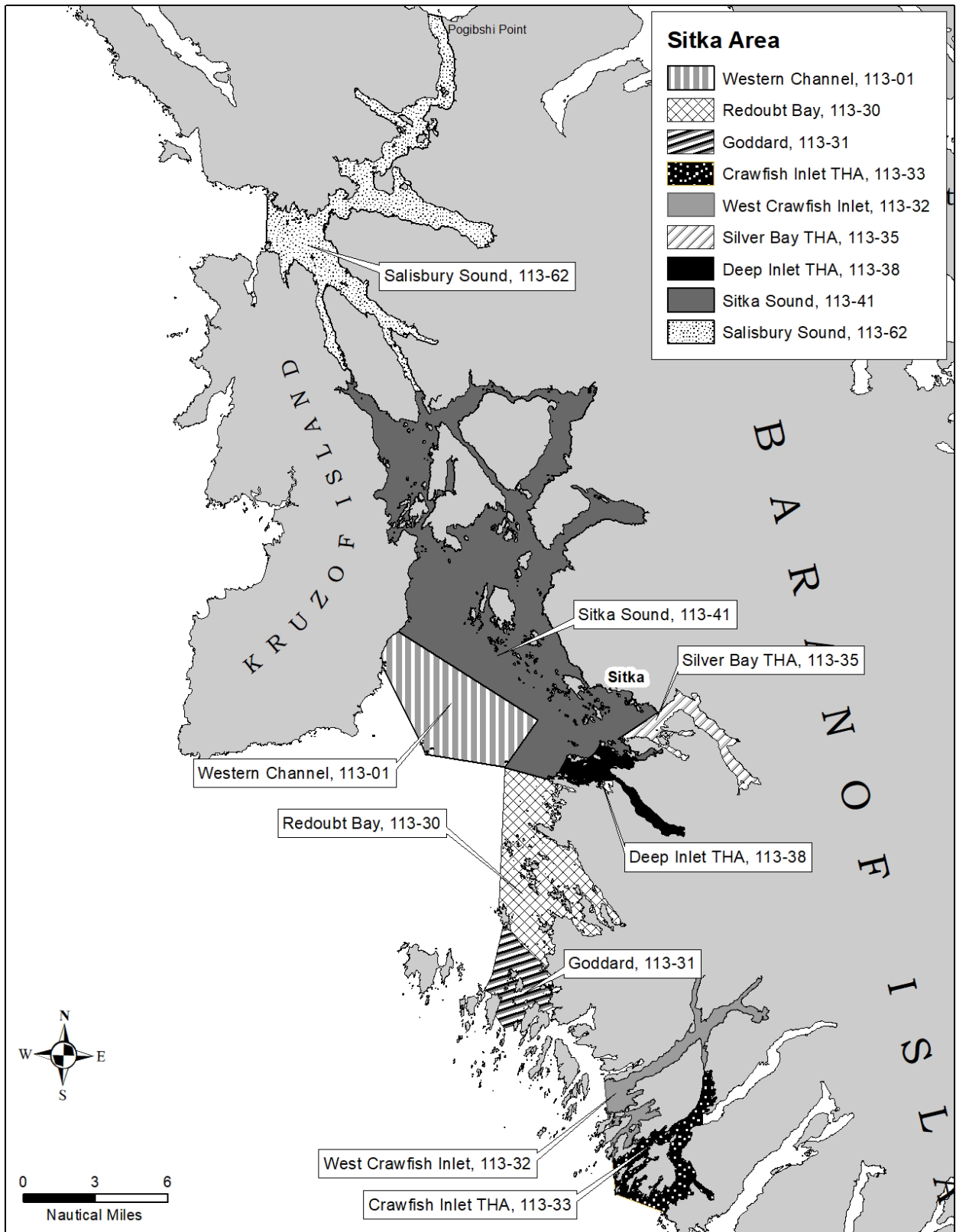


Figure 17.—Sitka spring troll areas and Terminal Harvest Areas (THAs).

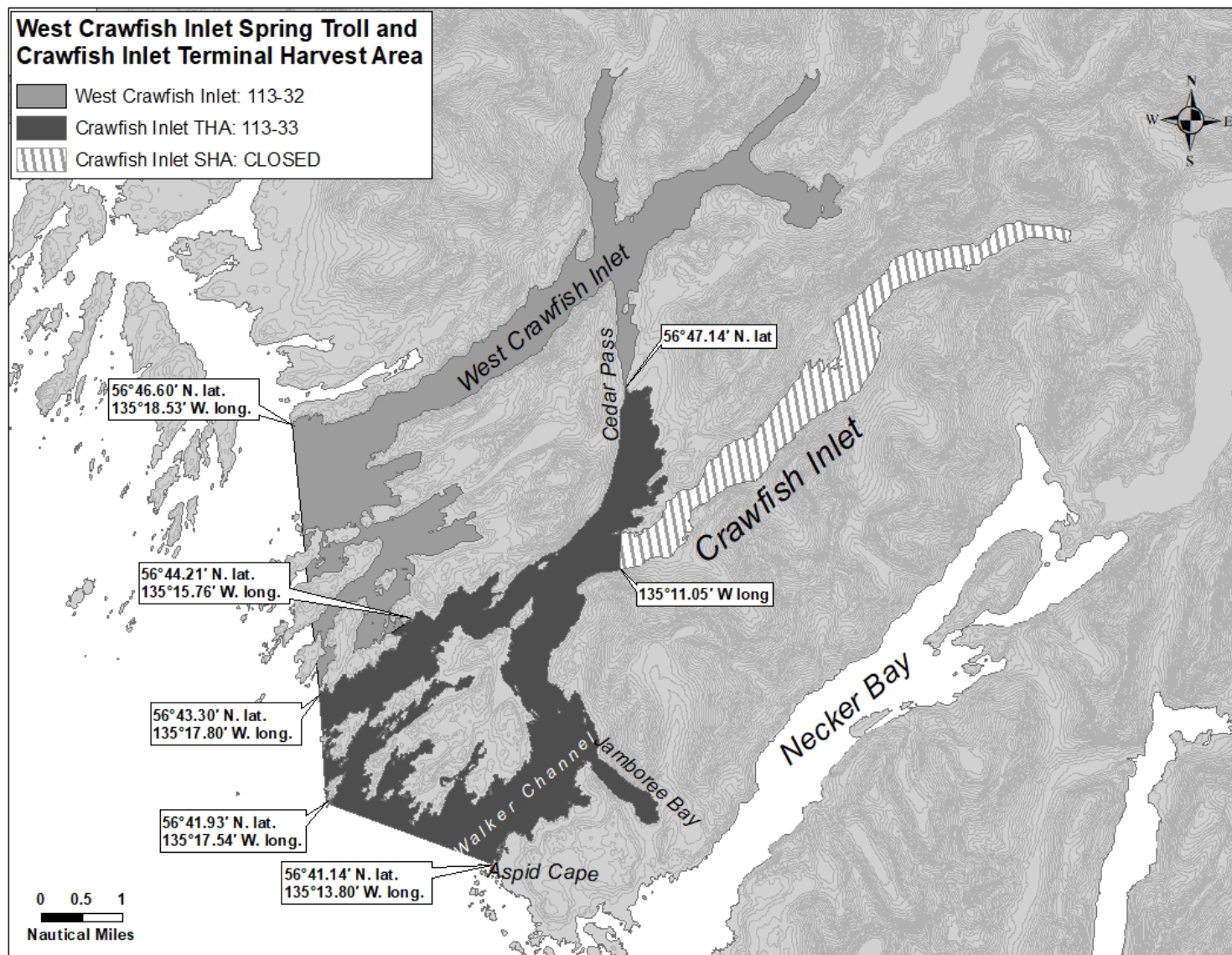


Figure 18.—West Crawfish Inlet spring troll, and the Crawfish Inlet Terminal Harvest Area (THA) and Special Harvest Area (SHA).

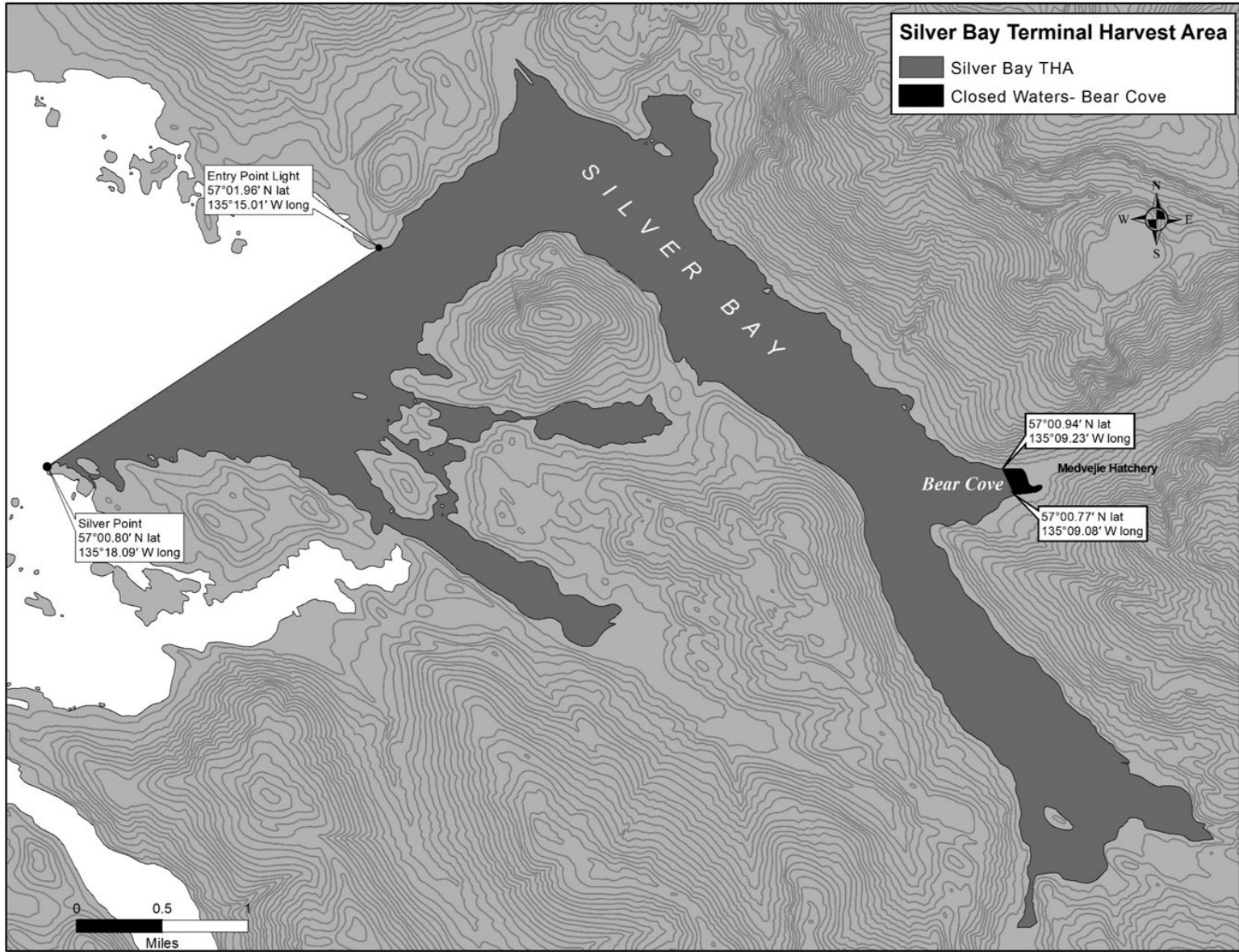


Figure 19.–Silver Bay Terminal Harvest Area (THA).

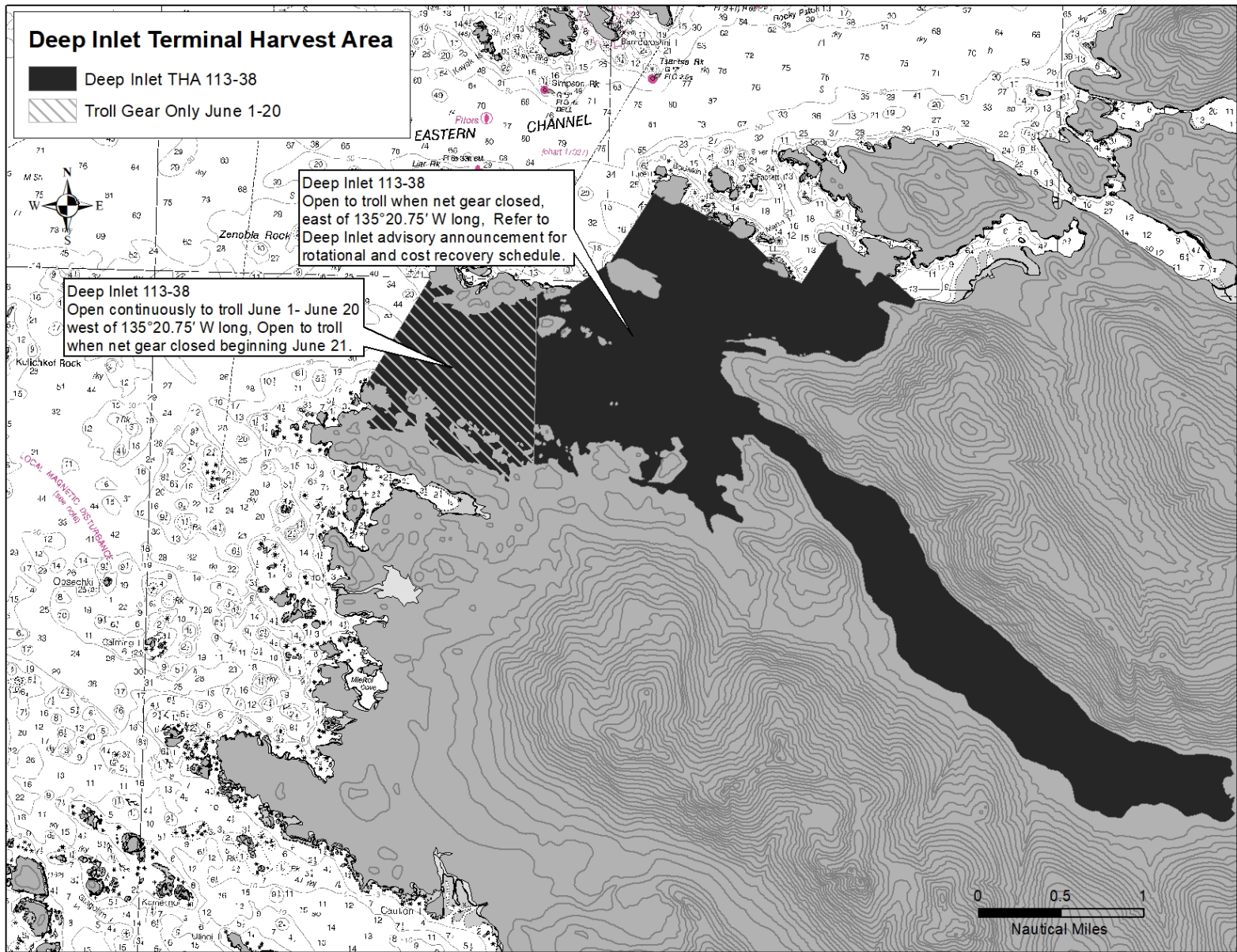


Figure 20.—Deep Inlet Terminal Harvest Area (THA).

NORTH CHATHAM STRAIT AND ICY STRAIT HATCHERY CHUM SALMON AREAS

Northern Chatham Strait (fishery area 112-16): In the waters enclosed by a line from 58°11.29' N lat, 134°53.27' W long, to 58°10.40' N lat, 135°02.63' W long, to 58°07.78' N lat, 135°00.78' W long, to 58°05.81' N lat, 134°47.09' W long (Figure 21).

Cross Sound (fishery area 114-21): In waters of Section 14-A, in Dundas Bay east of a line from 58°22.90' N lat, 136°25.30' W long to 58°23.60' N lat, 136°24.60' W long, west of a line from the southernmost tip of Point Dundas at 58°18.93' N lat, 136°16.79' W long to the westernmost tip of Lemesurier Island at 58°16.74' N lat, 136°09.45' W long, to the prominent point on the northeastern side of the Inian Peninsula at 58°13.43' N lat, 136°17.00' W long, east of the line of longitude extending south from the southernmost tip of Taylor Island at 58°16.98' N lat, 136°29.02' W long to the point on that line that intersects at 58°10.00' N lat, north of a line that continues east to Althorp Rock Light at 58°09.98' N lat, 136°21.56' W long, and west of the line continuing north to the Elfin Cove Entrance Light 2 at 58°11.68' N lat, 136°21.11' W long (Figure 21).

South Passage (fishery area 114-23): In the waters of Icy Strait south and east of a line extending from the prominent point on the northeastern side of Inian Peninsula at 58°13.43' N lat, 136°17.00' W long, to the westernmost tip of Lemesurier Island at 58°16.74' N lat, 136°09.45' W long, from the Lemesurier Island Light at 58°19.15' N lat, 136°02.45' W long to Point Gustavus at 58°22.75' N lat, 135°54.93' W long, and west of a line from Point Adolphus Light at 58°17.16' N lat, 135°46.98' W long, to a point approximately 1.0 nmi north of Point Adolphus at 58°18.04' N lat, 135°46.98' W long, north of a line continuing southeast to 58°14.65' N lat, 135°32.20' W long, and west of the line extending north from that point through Noon Point on the 135°32.20' W long, to the mainland shore at 58°23.88' N lat, 135°32.20' W long, including the waters of Icy Passage (Figure 21).

Homeshore (fishery area 114-25): In the waters of Icy Strait east of the longitude of Noon Point at 135°32.20' W long, and west of 135°09.60' W long, and north of a line from 58°09.58' N lat, 135°09.60' W long to the northern tip of the northernmost island of the Sisters Islands at 58°10.78' N lat, 135°15.48' W long to 58°14.65' N lat, 135°32.20' W long (Figure 21).

Point Couverden (fishery area 114-26): In the waters enclosed by a line from 58°11.63' N lat, 135°09.60' W long, to 58°09.58' N lat, 135°09.60' W long, to 58°07.78' N lat, 135°00.78' W long, to 58°10.00' N lat, 135°02.35' W long, to 58°10.00' N lat, 135°06.24' W long, to 58°11.63' N lat, 135°09.60' W long (Figure 21).



Figure 21.—Northern Chatham Strait and Icy Strait spring troll chum salmon areas.

YAKUTAT AREA

Yakutat Bay (Fishery Area 183-10): In the waters of Yakutat Bay east of a line from Point Manby at 59°41.68' N lat, 140°19.64' W long to a point south of Ocean Cape Light at 59°32.11' N lat, 139°51.32' W long (Figure 22).

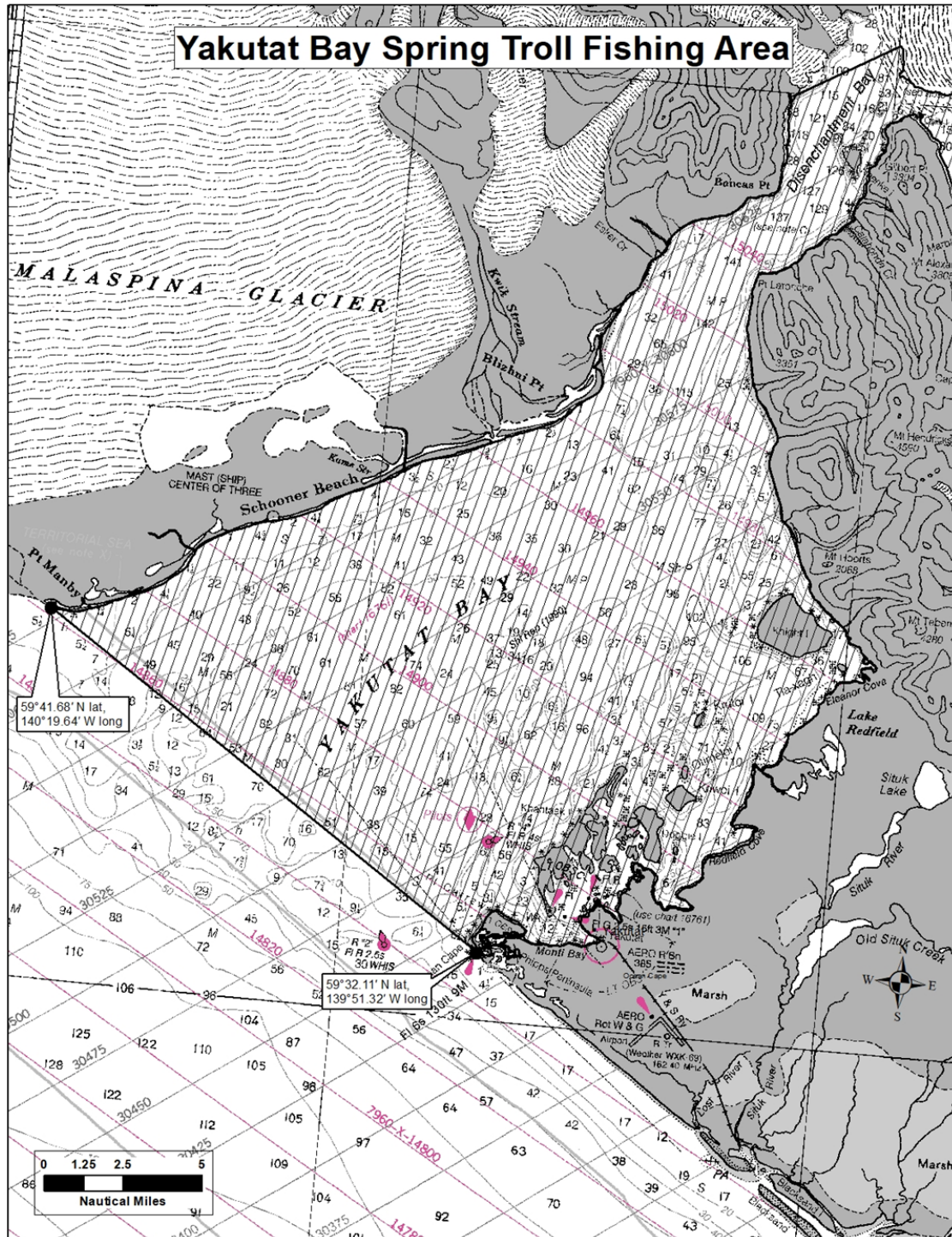


Figure 22.—Yakutat Bay spring troll area.

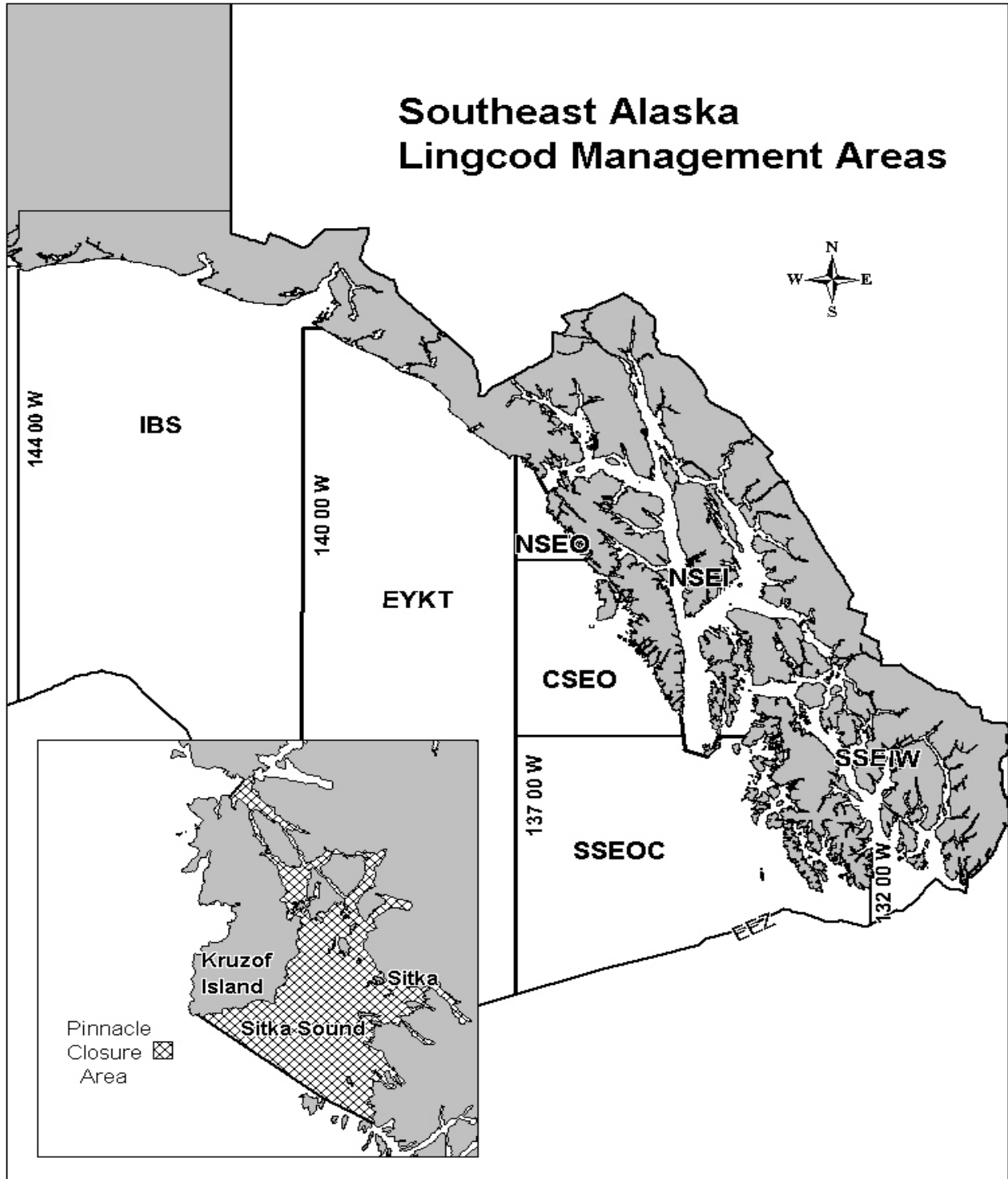


Figure 23.—Southeast Alaska lingcod management areas and restricted waters of Sitka Sound Special Use Area.

FISHERY CONTACTS

The following are Division of Commercial Fisheries contacts regarding this management plan:

Grant Hagerman
Troll Management Biologist
304 Lake Street, #103
Sitka, Alaska 99835
(907) 747-6688

Isabel Platten
Assistant Troll Management Biologist
304 Lake Street, #103
Sitka, Alaska 99835
(907) 747-6688

Troy Thynes
Regional Management Coordinator
P. O. Box 667
Petersburg, Alaska 99833
(907) 772-3801

Anne Reynolds Manney
Southeast Alaska Regional Supervisor
2030 Sea Level Drive Suite 205
Ketchikan, Alaska 99901
(907) 228-3013

Rhea Ehresmann
Groundfish Project Leader
304 Lake Street, #103
Sitka, Alaska 99835
(907) 747-6688

For updated information on the troll fishery, call the 24-hour information line in the Douglas (907) 465-TROL (8765), Sitka (907) 747-8765, or Ketchikan (907) 225-6870.

SOUTHEAST ALASKA TROLL WEBSITE INFORMATION:

<http://www.adfg.alaska.gov/index.cfm?adfg=commercialbyareasoutheast.salmon>

REFERENCES CITED

- Hagerman, G. T., S. N. Forbes, J. T. Williams, and D. J. Teske. 2025. 2025 Taku and King Salmon rivers Chinook salmon stock status and action plan. Alaska Department of Fish and Game, Divisions of Commercial Fisheries and Sport Fish, Regional Information Report No. 1J25-08, Douglas.
- Salomone, P. G., K. Courtney, G. T. Hagerman, P. A. Fowler, and P. J. Richards. 2022. Stikine River and Andrew Creek Chinook salmon stock status and action plan, 2021. Alaska Department of Fish and Game, Division of Commercial Fisheries, Regional Information Report No. 1J22-15, Douglas.