

# **2021 Spring Troll Fishery Management Plan**

by

**Grant Hagerman**

and

**Michael Vaughn**

---

April 2021

---

Alaska Department of Fish and Game

Division of Commercial Fisheries



## Symbols and Abbreviations

The following symbols and abbreviations, and others approved for the Système International d'Unités (SI), are used without definition in the following reports by the Divisions of Sport Fish and of Commercial Fisheries: Fishery Manuscripts, Fishery Data Series Reports, Fishery Management Reports, and Special Publications. All others, including deviations from definitions listed below, are noted in the text at first mention, as well as in the titles or footnotes of tables, and in figure or figure captions.

Weights and measures (metric)		General		Mathematics, statistics	
centimeter	cm	Alaska Administrative Code		all standard mathematical signs, symbols and abbreviations	
deciliter	dL		AAC		
gram	g	all commonly accepted abbreviations	e.g., Mr., Mrs., AM, PM, etc.	alternate hypothesis	H <sub>A</sub>
hectare	ha			base of natural logarithm	e
kilogram	kg			catch per unit effort	CPUE
kilometer	km	all commonly accepted professional titles	e.g., Dr., Ph.D., R.N., etc.	coefficient of variation	CV
liter	L			common test statistics	(F, t, $\chi^2$ , etc.)
meter	m	at	@	confidence interval	CI
milliliter	mL	compass directions:		correlation coefficient (multiple)	R
millimeter	mm	east	E	correlation coefficient (simple)	r
<b>Weights and measures (English)</b>		north	N	covariance	cov
cubic feet per second	ft <sup>3</sup> /s	south	S	degree (angular)	°
foot	ft	west	W	degrees of freedom	df
gallon	gal	copyright	©	expected value	E
inch	in	corporate suffixes:		greater than	>
mile	mi	Company	Co.	greater than or equal to	≥
nautical mile	nmi	Corporation	Corp.	harvest per unit effort	HPUE
ounce	oz	Incorporated	Inc.	less than	<
pound	lb	Limited	Ltd.	less than or equal to	≤
quart	qt	District of Columbia	D.C.	logarithm (natural)	ln
yard	yd	et alii (and others)	et al.	logarithm (base 10)	log
<b>Time and temperature</b>		et cetera (and so forth)	etc.	logarithm (specify base)	log <sub>2</sub> , etc.
day	d	exempli gratia (for example)	e.g.	minute (angular)	'
degrees Celsius	°C	Federal Information Code	FIC	not significant	NS
degrees Fahrenheit	°F	id est (that is)	i.e.	null hypothesis	H <sub>0</sub>
degrees kelvin	K	latitude or longitude	lat or long	percent	%
hour	h	monetary symbols (U.S.)	\$, ¢	probability	P
minute	min	months (tables and figures): first three letters	Jan.,...,Dec	probability of a type I error (rejection of the null hypothesis when true)	α
second	s	registered trademark	®	probability of a type II error (acceptance of the null hypothesis when false)	β
<b>Physics and chemistry</b>		trademark	™	second (angular)	"
all atomic symbols		United States (adjective)	U.S.	standard deviation	SD
alternating current	AC	United States of America (noun)	USA	standard error	SE
ampere	A	U.S.C.	United States Code	variance	
calorie	cal			population sample	Var var
direct current	DC				
hertz	Hz				
horsepower	hp				
hydrogen ion activity (negative log of)	pH				
parts per million	ppm				
parts per thousand	ppt, ‰				
volts	V				
watts	W				

***REGIONAL INFORMATION REPORT NO. 1J21-06***

**2021 SPRING TROLL FISHERY MANAGEMENT PLAN**

by  
Grant Hagerman and Michael Vaughn  
Alaska Department of Fish and Game, Division of Commercial Fisheries, Sitka

Alaska Department of Fish and Game  
Division of Commercial Fisheries, Publications Section  
802 3rd, Douglas, Alaska, 99824-0020

April 2021

The Regional Information Report Series was established in 1987 and was redefined in 2007 to meet the Division of Commercial Fisheries regional need for publishing and archiving information such as area management plans, budgetary information, staff comments and opinions to Alaska Board of Fisheries proposals, interim or preliminary data and grant agency reports, special meeting or minor workshop results and other regional information not generally reported elsewhere. Reports in this series may contain raw data and preliminary results. Reports in this series receive varying degrees of regional, biometric and editorial review; information in this series may be subsequently finalized and published in a different department reporting series or in the formal literature. Please contact the author or the Division of Commercial Fisheries if in doubt of the level of review or preliminary nature of the data reported. Regional Information Reports are available through the Alaska State Library and on the Internet at: <http://www.adfg.alaska.gov/sf/publications/>.

Product names used in this publication are included for completeness and do not constitute product endorsement. The Alaska Department of Fish and Game does not endorse or recommend any specific company or their products.

*Grant Hagerman and Michael Vaughn  
Alaska Department of Fish and Game, Division of Commercial Fisheries,  
304 Lake Street, Room 103, Sitka, Alaska 99835-7563 USA*

*This document should be cited as follows:*

*Hagerman, G., and M. Vaughn. 2021. 2021 spring troll fishery management plan. Alaska Department of Fish and Game, Regional Information Report No. 1J21-06, Douglas, Alaska.*

The Alaska Department of Fish and Game (ADF&G) administers all programs and activities free from discrimination based on race, color, national origin, age, sex, religion, marital status, pregnancy, parenthood, or disability. The department administers all programs and activities in compliance with Title VI of the Civil Rights Act of 1964, Section 504 of the Rehabilitation Act of 1973, Title II of the Americans with Disabilities Act (ADA) of 1990, the Age Discrimination Act of 1975, and Title IX of the Education Amendments of 1972.

**If you believe you have been discriminated against in any program, activity, or facility please write:**

ADF&G ADA Coordinator, P.O. Box 115526, Juneau, AK 99811-5526

U.S. Fish and Wildlife Service, 4401 N. Fairfax Drive, MS 2042, Arlington, VA 22203

Office of Equal Opportunity, U.S. Department of the Interior, 1849 C Street NW MS 5230, Washington DC 20240

**The department's ADA Coordinator can be reached via phone at the following numbers:**

(VOICE) 907-465-6077, (Statewide Telecommunication Device for the Deaf) 1-800-478-3648,  
(Juneau TDD) 907-465-3646, or (FAX) 907-465-6078

**For information on alternative formats and questions on this publication, please contact:**

ADF&G, Division of Sport Fish, Research and Technical Services, 333 Raspberry Rd, Anchorage AK 99518 (907) 267-2375



# TABLE OF CONTENTS

	Page
LIST OF TABLES.....	ii
LIST OF FIGURES.....	ii
ABSTRACT .....	1
INTRODUCTION.....	1
MANAGEMENT OBJECTIVES AND METHODS .....	1
Spring Fisheries .....	1
Terminal and Special Harvest Area Fisheries.....	2
RETENTION OF OTHER SALMON SPECIES .....	3
2020 SPRING TROLL FISHERY REVIEW .....	3
2021 SPRING TROLL FISHERIES OVERVIEW .....	3
Spring Troll Fishery Openings .....	3
District 8 Directed Chinook Salmon Fishery.....	4
District 11 Directed Chinook Salmon Fishery.....	4
Regulatory Changes and Management Actions To Conserve Wild Stock Chinook Salmon in the Spring Troll Fisheries.....	4
Time and Area Modifications .....	5
Terminal and Special Harvest Area Troll Fisheries.....	5
REGULATION SUMMARY .....	6
Closed Waters.....	6
Size and Landing Requirements .....	7
Reporting Requirements.....	7
Sport Fishing and Chartering from a Registered Troll Vessel.....	7
Groundfish and Halibut Bycatch Information .....	8
2021 ALASKA HATCHERY CHINOOK RUN FORECAST .....	12
2021 SPRING TROLL AREAS AND MAPS.....	14
Ketchikan Areas (Figure 3) .....	14
Craig and Wrangell Areas (Figure 6) .....	18
Chatham Strait and Frederick Sound Areas ( .....	21
Sitka Areas (Figure 11).....	25
North Chatham Strait and Icy Strait Hatchery Chum Salmon Areas (Figure 15).....	31
Yakutat Area (Figure 16).....	33
FISHERY CONTACTS .....	34

## LIST OF TABLES

<b>Table</b>	<b>Page</b>
1. Guideline limits of PST Chinook salmon (U.S./Canada) that may be harvested in each spring troll fishing area. ....	2
2. Bycatch Provisions for the 2021 Spring Salmon Troll Fishery .....	8
3. 2021 Alaska hatchery Chinook salmon and Neck Lake coho salmon run forecasts. ....	12

## LIST OF FIGURES

<b>Figure</b>	<b>Page</b>
1. Southeast Alaska lingcod management areas and restricted waters of Sitka Sound Special Use Area. ....	11
2. Location of Chinook salmon hatcheries, remote release sites (RR), and broodstock sources in Southeast Alaska. ....	13
3. Ketchikan spring troll areas.....	15
4. Carroll Inlet Terminal Harvest Area.....	16
5. Neets Bay Terminal Harvest Area.....	17
6. Craig spring troll areas. ....	19
7. Anita Bay Terminal Harvest Area. ....	20
8. Chatham Strait and Fredrick Sound spring troll areas. ....	22
9. Southeast Cove Terminal Harvest Area. ....	23
10. Thomas Bay Special Harvest Area.....	24
11. Sitka spring troll areas.....	27
12. West Crawfish Inlet spring troll, Crawfish Inlet Terminal and Special Harvest Areas.....	28
13. Silver Bay Terminal Harvest Area. ....	29
14. Deep Inlet Terminal Harvest Area. ....	30
15. North Chatham Strait and Icy Strait spring troll chum salmon areas. ....	32
16. Yakutat Bay spring troll area.....	33

## ABSTRACT

This document summarizes the plan that the Alaska Department of Fish and Game will follow to manage the 2021 Southeast Alaska spring commercial salmon troll fisheries, according to State of Alaska Administrative Code 5 AAC 29.090 and guidelines mandated by the Alaska Board of Fisheries under Chinook salmon action plans for stocks of management concern.

Key words: Salmon, Chinook, Chum, Troll, Spring, Commercial, Management Plan, Southeast Alaska

## INTRODUCTION

This plan summarizes the management approach the Alaska Department of Fish and Game (ADF&G or department) will employ to manage the Southeast Alaska (SEAK) commercial spring troll fisheries in 2021. Most spring fisheries target Alaska hatchery-produced Chinook salmon and are conducted during May and June of each year. Spring fisheries are managed inseason, according to Alaska Board of Fisheries (BOF) regulations and U.S./Canada Pacific Salmon Treaty (PST) provisions.

Plans for the 2021 spring and terminal troll fisheries are presented along with maps, area descriptions, and Alaska hatchery Chinook salmon forecasts. A review of 2020 spring troll fisheries is provided as well as a summary of pertinent regulations.

## MANAGEMENT OBJECTIVES AND METHODS

### SPRING FISHERIES

Spring fisheries are conducted along salmon migration routes or in close proximity to the following hatcheries and release sites: Little Port Walter Hatchery (NMFS), Port Armstrong Hatchery (Armstrong/Keta), Whitman Lake Hatchery, Crystal Lake Hatchery, Neets Bay Hatchery, Port Saint Nicholas Hatchery, Neck Lake, Carroll Inlet, and Anita Bay release sites (Southern Southeast Regional Aquaculture Association [SSRAA]), Medveje Hatchery, Hidden Falls Hatchery, and Crawfish Inlet release site (Northern Southeast Regional Aquaculture Association [NSRAA]), and Macaulay Hatchery (Douglas Island Pink and Chum [DIPAC]).

Most spring and terminal troll fisheries target Alaska hatchery Chinook salmon, though non-Alaska hatchery or PST Chinook salmon are also harvested. There are also spring troll fisheries that target Alaska hatchery chum salmon located in Keku Strait, North Chatham Strait, and Icy Strait (Districts 9, 10, 12, and 14). While there is no ceiling on the number of Chinook salmon harvested in spring fisheries, the take of PST Chinook salmon is limited according to the percentage of the Alaska hatchery fish taken in the fishery. Non-Alaska hatchery fish are counted toward the annual PST quota of Chinook salmon but most Alaska hatchery fish are not. The guideline limits of PST fish that may be harvested in each spring fishing area are specified in 5 AAC 29.090 (d)(1)(D). However, as provided in 5 AAC 29.090(d)(3)(B), if the preseason Abundance Index (AI) is 1.15 or above, and the amount of Chinook remaining on the winter guideline harvest level (GHL) is greater than 15,000 fish, then an additional 500 Chinook salmon will be added to the PST limits of each tier. With a 2021 preseason AI above 1.15 (translated from the 2020–2021 winter troll CPUE metric of 3.85), and an estimated 31,600 Chinook remaining on the winter fishery GHL, **500 Chinook will be added to each of the PST tier limits** (Table 1).

Table 1.—Guideline limits of PST Chinook salmon (U.S./Canada) that may be harvested in each spring troll fishing area.

Alaska hatchery contribution to the harvest	2021 PST Chinook salmon limit
Less than 25%	1,500
At least 25% and less than 35%	2,500
At least 35% and less than 50%	3,500
At least 50% and less than 66%	5,500
66% or more	no limit

In previous years ADF&G fishery managers have held meetings in SEAK towns to discuss spring fishing plans with trollers, processors, and hatchery operators. A review of the previous fishing season was presented as well as an outlook for the upcoming year. New fishing areas or changes to existing areas also may have been proposed. Occasionally, two or more adjacent spring areas were combined if each area demonstrated an Alaska hatchery composition of 25% or more for at least three consecutive seasons. Proposed changes were scrutinized by ADF&G biologists for potential impacts on local wild stocks and to determine whether a substantial portion of the harvest was likely to be of Alaska hatchery origin. Once plans were finalized, the department then issued an advisory announcement with a description of each fishing area and a schedule of initial fishing periods. With directives from the BOF and ADF&G Commissioner’s Office to implement conservation measures to protect wild Southeast Alaska Chinook salmon and to provide spring troll hatchery fisheries in select areas only, public meetings considering amendments to existing spring troll areas have been suspended since 2018.

Each spring fishing area is managed individually with fishing periods announced through a series of weekly advisory announcements. Department personnel are deployed to observe salmon deliveries to assess hatchery contribution to each fishery. The head of each tagged fish is shipped to ADF&G’s Mark, Tag, and Age Laboratory in Juneau for coded wire tag (CWT) detection and decoding. Fishing time in an area may be extended by emergency order, based on inseason assessment of CWT data and historic harvest timing information. **It is imperative that trollers and tender operators segregate salmon taken in different fishing areas and keep those fish separated** so ADF&G port sampling staff have the opportunity to collect accurate data to determine the percentage of Alaska hatchery fish taken in each spring area. Fishery extensions will be announced by ADF&G advisory announcement and recorded on the Troll Fishery telephone hotlines; telephone numbers are provided in the “Fishery Contacts” section at the end of this report. Announcements of inseason extensions will be submitted for broadcast on the United States Coast Guard “Notice to Mariners” report and National Weather Service broadcast; however, the department cannot insure the availability or functionality of these communication systems in all areas.

## TERMINAL AND SPECIAL HARVEST AREA FISHERIES

Terminal and special harvest area (THA and SHA) fisheries are conducted in areas near a hatchery or release site. Chinook and chum salmon harvested in most THAs and SHAs are considered to be 100% Alaska hatchery origin, based on previous data generated through fishery sampling activity. Terminal and special harvest areas that may open during the spring season include Anita Bay, Carroll Inlet, Crawfish Inlet, Deep Inlet, Hidden Falls, Nakat Inlet, Neets Bay, Port Armstrong, Silver Bay, Southeast Cove, Thomas Bay, and Wrangell Narrows. THA and SHA fisheries are conducted according to management plans unique to each area and may involve a rotational fishing

schedule split between multiple commercial gear types. Trollers may also harvest coho salmon, in accordance with THA and SHA management plans.

## **RETENTION OF OTHER SALMON SPECIES**

Coho salmon may be retained and sold beginning June 1 [5 AAC 29.110(a)]. Sockeye, pink, and chum salmon may be retained at any time during open fishing periods, except that retention of sockeye salmon is prohibited in the Northern Chatham Strait and Point Couverden hatchery chum areas [5 AAC 29.114(b)]. If an Atlantic salmon is caught, fisherman are advised to retain the whole fish (fresh or frozen, entrails intact) and contact a local ADF&G office so that biological samples can be collected.

## **2020 SPRING TROLL FISHERY REVIEW**

A total of 254 vessels participated in the 2020 nonterminal spring fisheries, with a harvest of 12,136 Chinook salmon. The largest Chinook salmon harvests were taken in the Sitka Sound, Western Channel, and Bucareli Bay spring troll areas. The 2020 nonterminal area Chinook salmon harvest was 1,767 fish greater than in 2019 but below the 5-year average by 54% and 10-year average by 60%. The Alaska hatchery contribution of 25% was below the recent 5-year average (33%) and recent 10-year average (35%). The total 2020 spring and terminal effort of 288 permits was below 2019 (3%) and the recent 5-year (35%) and 10-year (44%) averages. A total of 11 spring and 11 terminal fisheries were open during the 2020 spring troll season. Other species harvested during the spring season, including terminal and Annette Island fisheries, included 63 coho, 240 pink, and 138 chum, and 4 sockeye salmon.

## **2021 SPRING TROLL FISHERIES OVERVIEW**

### **SPRING TROLL FISHERY OPENINGS**

Spring troll areas will be opened by emergency order based on inseason and historical timing of hatchery contributions. Trollers should consult department advisory announcements issued each Friday for weekly area openings and fishing periods. Announcements may also be issued throughout the week when fishery extensions or early closures are warranted. Advisory announcements can be found on the ADF&G web site at:

[www.adfg.alaska.gov/index.cfm?adfg=cfnews.main](http://www.adfg.alaska.gov/index.cfm?adfg=cfnews.main)

•**Ketchikan Area:** spring troll fisheries are scheduled to open in **Mountain Point (101-45)** and **Rock Point (101-46)** areas during the first week of June.

•**Craig Area:** spring troll fisheries are scheduled to open in **Bucareli Bay (103-50)** and **Port Saint Nicholas (103-60)** areas beginning May 1.

•**Sitka Area:** spring troll fisheries are scheduled to open in **Redoubt Bay (113-30)**, **Sitka Sound (113-41)**, and **Salisbury Sound (113-62)** beginning May 1. **Western Channel (113-01)**, **Goddard (113-31)**, and **West Crawfish Inlet (113-32)** will open during the week of May 30.

•**Yakutat Area:** a spring troll fishery is scheduled to open in **Yakutat Bay (183-10)** beginning May 1. The fishery is limited by regulation to one day per week during May and June. The maximum harvest allowed is 1,000 Chinook salmon and management is not based on the composition of Alaska hatchery fish.

•**Hatchery chum salmon areas:** spring troll fisheries for chum salmon are scheduled to open June 15 in **Keku Strait (109-42)**, **Cross Sound (114-21)**, **South Passage (114-23)**, **Homeshore (114-25)**, **Point Couverden (114-26)**, and **Northern Chatham Strait (112-16)**. Retention of Chinook salmon is prohibited in these fisheries.

The Point Couverden and Northern Chatham Strait fisheries may be open for up to four weekdays per week and are restricted to the retention of pink and chum salmon only.

## **DISTRICT 8 DIRECTED CHINOOK SALMON FISHERY**

The 2021 preseason terminal run size forecast for Stikine River large Chinook salmon is 9,900 fish. A preseason terminal run forecast of this size does not provide an Allowable Catch (AC) for either the U.S. or Canada as the forecast is below the escapement goal range (EGR) of 14,000 to 28,000 fish. No directed fisheries will occur in May and restrictions will be taken in all District 8 fisheries. Inseason terminal run size estimates may be produced starting in late May; however, it is unlikely any directed Chinook salmon fisheries will occur in District 8 in 2021.

## **DISTRICT 11 DIRECTED CHINOOK SALMON FISHERY**

The 2021 preseason terminal run size forecast for Taku River large Chinook salmon is 10,300 fish. A preseason terminal run forecast of this size does not provide an AC for either the U.S. or Canada as the forecast is below the EGR of 19,000–36,000 fish. No directed fisheries will occur in May and restrictions will be taken in all District 11 fisheries. Inseason terminal run size estimates may be produced starting in late May; however, it is unlikely any directed Chinook salmon fisheries will occur in District 11 in 2021.

## **REGULATORY CHANGES AND MANAGEMENT ACTIONS TO CONSERVE WILD STOCK CHINOOK SALMON IN THE SPRING TROLL FISHERIES**

During the 2018 Southeast and Yakutat BOF meeting, regulations were adopted that continue to affect the management of spring troll fisheries. Action plans for Chilkat, King Salmon, and Unuk Rivers stocks of Chinook salmon were adopted, giving the department direction through emergency order authority to conserve these wild SEAK Chinook salmon stocks. To help reduce encounters of these stocks during spring troll fisheries, the board determined under the Unuk River action plan that May and June opportunities for Alaska hatchery Chinook salmon will be limited to terminal harvest areas, waters in close proximity to hatchery facilities or release sites, and in areas that have been identified as having low proportional harvests of wild stock SEAK Chinook salmon. Supplementary actions, taken under the authority of the ADF&G Office of the Commissioner for the conservation of SEAK and Transboundary River Chinook salmon stocks, further restrict May and June fishery opportunities to select terminal harvest areas and a few defined spring troll fishery areas located on the outside coast.

For complete details of the Chinook salmon action plans for the Unuk River, Chilkat, and King Salmon Rivers see the links below:

- Unuk River King Salmon Stock Status and Action Plan, 2018:

- <http://www.adfg.alaska.gov/FedAidPDFs/RIR.1J.2018.04.pdf>

- Chilkat River and King Salmon River King Salmon Stock Status and Action Plan, 2018:

- <http://www.adfg.alaska.gov/FedAidPDFs/RIR.1J.2018.05.pdf>

## TIME AND AREA MODIFICATIONS

- All THAs and SHAs will have initial openings on June 1, with the exception of the Neets Bay THA (June 15), Thomas Bay SHA (June 20) and Southeast Cove THA (June 20) .
- The Hidden Falls THA eastern boundary will be reduced to 1.0 nmi from June 1 to June 26 and extended out to 2.0 nmi on June 27.
- The Goddard spring troll area has been expanded on the western and southern boundaries.
- The Port Saint Nicholas spring troll area has been expanded on the the southern boundary to include waters north of a line from Toti Island to Culebrina Island; the Bucareli Bay spring troll area was reduced to exclude these waters.

## TERMINAL AND SPECIAL HARVEST AREA TROLL FISHERIES

Consistent with directives to conserve wild stock Chinook salmon in spring troll fisheries, THA and SHA fishery openings are delayed by emergency order until June. These areas may be managed for harvest of multiple species by different gear types. Refer to the regulatory management plans for each THA/SHA.

•**Anita Bay (107-35):** open continuously to troll gear from 5:00 a.m., June 1 through noon, July 12, and from August 10 through noon, November 10 for all salmon species unless closed by emergency order [5 AAC 33.383(d)]. To facilitate cost recovery efforts, the THA will be closed to commercial salmon fishing from 12:01 a.m, July 13, through 11:59 p.m., August 9. Refer to the 2021 Anita Bay THA advisory announcement issued in April for details on time and area restrictions.

•**Carroll Inlet (101-48):** open to troll gear June 1–30 for all salmon species. Concurrent openings for troll, drift gillnet and purse seine are scheduled June 1 through 12:00 noon, June 12. The outer waters of the THA between Nigeli Point and a line 1.3 nmi north of Nigeli Point (55°34.83' N lat) are open exclusively to troll gear between June 1 and 12:00 noon, June 15. The THA will be open exclusively for troll gear from 12:00 noon, June 12 to 12:00 noon, June 15. Rotational net gear fisheries are scheduled from 12:00 noon, June 15 through June 30 [5 AAC 33.379]. Refer to the 2021 Carroll Inlet THA advisory announcement issued in April for details on time and area restrictions.

•**Crawfish Inlet (113-33):** open to troll gear June 1 through September 20 with Chinook salmon retention permitted only during June and the general summer troll Chinook salmon retention periods [5 AAC 33.380].

•**Deep Inlet (113-38):** open to troll gear for all salmon species on Saturdays beginning June 5 and during periods when net fisheries are closed. Additional troll fishing opportunity is provided June 1–19 in waters of the THA that are west of 135°20.75' W long, as detailed in the 2021 Deep Inlet THA advisory announcement issued in early April. Schedule changes are made by emergency order and announced by advisory announcement [5 AAC 33.376].

•**Hidden Falls (112-22):** open to troll gear June 1–26 with the eastern boundary of the THA reduced by emergency order to 1.0 nmi from Baranof Island shoreline; from June 27 until closed by emergency order, the eastern boundary reverts back to within 2.0 nmi of the shoreline [5 AAC 33.374(a)]. Chinook salmon retention is permitted only during June and the general summer troll Chinook salmon retention periods.

•**Nakat Inlet (101-10):** open June 1 through November 10 to troll and drift gillnet gear unless closed by emergency order [5 AAC 33.372]. Chinook salmon retention is permitted only during general summer troll Chinook salmon retention periods. The Nakat Inlet THA will be closed to commercial salmon fishing from 12:01 a.m., July 11 through 11:59 p.m., July 24, to allow for cost recovery efforts by SSRAA. Refer to the 2021 Nakat Inlet THA advisory announcement issued in April for details on time and area restrictions.

•**Neets Bay (101-95):** open to troll gear June 15 through July 6 with rotational net gear fisheries scheduled concurrently from June 17 through 12:00 noon, July 6, unless closed by emergency order [5 AAC 33.370]. Additional time, area, and Chinook salmon retention restrictions are described in the 2021 Neets Bay THA advisory announcement issued in early April.

•**Port Armstrong (109-11):** open to troll gear from June 1 to September 20 for all salmon species in the waters of Port Armstrong described in 5 AAC 40.081(b), unless closed by emergency order.

**Southeast Cove (109-41):** open June 20 through August 7, unless closed by emergency order [5 AAC 33.387(c)], with the troll fishery open during periods the purse seine fishery is closed. Chinook salmon retention is permitted only during general summer troll Chinook salmon retention periods. Additional details on openings are described in the 2021 Southeast Cove and Thomas Bay THA advisory announcement.

•**Silver Bay (113-35):** open to troll gear June 1 through July 30 for all salmon species, unless closed by emergency order [5 AAC 33.375(a)].

•**Thomas Bay (110-12):** open June 20 through August 7, unless closed by emergency order, with the troll fishery open during periods the purse seine fishery is closed. Chinook salmon retention is permitted only during general summer troll Chinook salmon retention periods. Additional details on openings and area restrictions are described in the 2021 Southeast Cove and Thomas Bay THA advisory announcement.

•**Wrangell Narrows (106-44):** will not open in 2021 since the adult run of Chinook salmon to the terminal area is projected to be less than 4,000 fish [5 AAC 33.381(b)(3)].

## REGULATION SUMMARY

For information on Southeast Alaska and Yakutat Commercial Salmon Fishing Regulations, refer to the current regulation booklet available at ADF&G area offices or online at <http://www.adfg.alaska.gov/index.cfm?adfg=fishregulations.commercial>.

### CLOSED WATERS

The Annette Islands Reserve is a federally-recognized Indian reservation in Alaska. The waters within 3,000 feet of Annette Island, Ham Island, Hemlock Island, Spire Island, Walker Island, Lewis Island, and adjacent rocks and islets are designated within the fishing reserve. Fisheries within the reserve are managed by the Metlakatla Indian Community for authorized fisheries participants only.

Closed waters listed in 5 AAC 29.150 are not in effect during the spring troll fishery [5 AAC 29.150(a)(2)]. The waters within 500 yards of the terminus of any salmon stream are open to trolling within the framework of authorized spring troll fishery areas and fishing periods established by emergency order.



## SIZE AND LANDING REQUIREMENTS

Chinook salmon taken and retained in the spring troll fishery must measure at least 28 inches in total length (from tip of snout to tip of tail, in its natural open position) or 23 inches from the midpoint of the clethral arch to the tip of the tail [5 AAC 29.140]. Undersized Chinook salmon that are taken must be returned to the water unharmed. A person may not mutilate or otherwise disfigure a Chinook salmon in any manner that would prevent the determination of the minimum size restriction.

The heads of all adipose-fin-clipped salmon must remain attached to the fish until the fish are offloaded from the vessel, except as authorized by permit [5 AAC 29.140 (b)]. Permit holders who freeze their harvest onboard are directed to contact the department prior to fishing so that port sampling and fish ticket requirements can be discussed and necessary permits issued.

An “ADF&G Salmon Troll Exemption Permit” issued by the department for the 2021 spring troll fishery is required for catcher-processors that intend to remove heads from salmon prior to delivery of those fish [5 AAC 29.145(c)]. Additional information about the Exemption Permit is available on the ADF&G troll web site and permits are available in local area offices. It is imperative that the department has adequate opportunity to sample Chinook salmon landed during spring fisheries. The objective of these fisheries is to target Alaska hatchery fish and ADF&G must be able to document hatchery contribution to support keeping each area open, and as such, may permit the removal of heads from adipose-fin-clipped salmon in select spring areas only.

In District 9, 10, 12, and 14 hatchery chum salmon troll fisheries, the operator of a salmon troll vessel shall keep the fish caught in each chum salmon fishery area separate from any other fish on board the vessel [5 AAC 29.114(d)]. A fish buyer shall separate fish caught in each chum salmon fishery area until delivered to the port of landing and shall issue a separate fish ticket for fish caught in each area.

## REPORTING REQUIREMENTS

Separate fish tickets must be completed for fish caught in each spring troll area fished [5 AAC 29.090(k)] and submitted to the department within seven days of landing [5 AAC 39.130(c)]. Fish ticket requirements include an **imprint of the Commercial Fisheries Entry Commission salmon troll permit card, five-digit salmon statistical area of harvest, start and end date of fishing, date of landing, and number of salmon recorded by species**, as well as other information required under 5 AAC 39.130. Catcher-processors delivering frozen at sea (FAS) product from spring fisheries are subject to the same landing regulations as all other vessels and salmon caught in each spring fishery must be segregated on board the vessel. Additionally, **an FAS vessel shall submit a fish ticket for each week fished** that documents the number and estimated pounds of salmon caught during that week and must indicate on that fish ticket that fish were frozen [5 AAC 29.145(a)]. FAS vessels are defined as processors by ADF&G, Department of Environmental Conservation, and Department of Revenue and as such must issue their own fish tickets imprinted with their processor code plate following reporting requirements of 5 AAC 39.130.

## SPORT FISHING AND CHARTERING FROM A REGISTERED TROLL VESSEL

- A person may sport fish from a registered commercial salmon hand troll or power troll vessel [5 AAC 47.041(a)] however, **may not sport fish and commercial fish for salmon from the same vessel on the same day** [5 AAC 47.041(f)]. A person who sport fishes

from a vessel licensed for commercial salmon fishing, other than a charter vessel when paying clients are onboard, shall, immediately upon bringing a salmon on board, mark the salmon by **removing its dorsal fin** [5 AAC 47.041(c)].

- Sport fishing from a commercially licensed vessel while commercially caught salmon are in possession is illegal in waters closed to commercial salmon fishing [5 AAC 47.041(d)].
- A downrigger may be used in conjunction with a fishing rod when sport fishing. However, a downrigger may **not** be used in conjunction with a fishing rod to take salmon when engaged in commercial hand trolling during spring and summer troll fisheries [5 AAC 29.120(b)(2)(B)].
- A **registered troll vessel may also be registered as a charter vessel**, though that vessel may not be used to commercial fish and charter on the same day [5 AAC 75.995(a)(8)].
- A person **may possess sport caught salmon** on board a commercial salmon vessel while that vessel is engaged in commercial salmon fishing only if the salmon is preserved fish at the time the vessel is engaged in commercial fishing [5 AAC 47.041(g)]. The definition of “preserved fish” excludes unfrozen fish temporarily stored in coolers that contain ice or dry ice or fish that are lightly salted [5 AAC 75.995(a)(21)].
- No person may possess sport-caught halibut aboard a vessel when other fish or shellfish aboard the vessel are destined for sale, trade, or barter [5 AAC 75.070(a)].

## GROUND FISH AND HALIBUT BYCATCH INFORMATION

For information on Southeast Alaska Groundfish regulations, refer to the current Statewide Commercial Groundfish Fishing Regulations booklet available at ADF&G area offices or online at <http://www.adfg.alaska.gov/index.cfm?adfg=fishregulations.commercial>. For details on groundfish bycatch allowances in the troll fishery refer to the “Groundfish Bycatch in the 2021 Salmon Troll Fishery” advisory announcement issued on January 4, 2021.

## STATE BYCATCH ALLOWANCES

In the state waters portion of the Eastern Gulf of Alaska Area, commercial salmon trollers operating hand or power troll gear during an open commercial salmon fishing period may legally retain and possess incidentally taken groundfish [5 AAC 28.133]. The commissioner may establish groundfish bycatch limits in the salmon troll fishery if it is deemed necessary to manage groundfish bycatch harvest within total catch limits. Allowable bycatch percentages for the 2021 spring troll fishery are provided in Table 2. The bycatch allowance for each species or species group reflects the percentage that may be retained and sold and is based on the round weight of salmon on board.

Table 2.—Bycatch Provisions for the 2021 Spring Salmon Troll Fishery

Species	Bycatch Allowance
Lingcod	100% IBS, CSEO, NSEI and SSEIW 10% SSEOC
Demersal Shelf Rockfish (DSR)	10%
Other rockfish	No limit on incidental harvest
Spiny dogfish	35%
Sablefish	0%
Other groundfish	No limit on incidental harvest

Groundfish taken as bycatch must be reported on an ADF&G fish ticket by **species code, six-digit groundfish statistical area, delivery condition code, disposition code, and number of pounds landed.**

## LINGCOD

Lingcod may be taken as bycatch in the commercial salmon troll fishery **only from May 16 through November 30** [5 AAC 28.113(c)]. Lingcod must measure at least 27 inches from the tip of the snout to the tip of the tail or 20.5 inches from the front of the dorsal fin to the tip of the tail. Lingcod harvest allocations for the troll fishery are set by area and area closures will occur as allocations are taken. Inseason closures will be announced by ADF&G advisory announcement and recorded on the Troll Fishery and Groundfish telephone hotlines at (907) 747-4882. Closure announcements will be submitted for broadcast on the United States Coast Guard “Notice to Mariners” report and National Weather Service broadcast; however, the department cannot insure the availability or functionality of these communication systems in all areas. For updates on lingcod area closures contact Groundfish staff in Sitka at (907) 747-6688.

Lingcod Management Areas open to lingcod bycatch during the spring troll fishery are described in 5 AAC 28.105 and include: Icy Bay Subdistrict (IBS), Central Southeast Outside (CSEO) Section, Southern Southeast Outer Coast (SSEOC) Sector, Northern Southeast Inside (NSEI) Subdistrict, and Southern Southeast Internal Waters (SSEIW) Sector (Figure 1). A lingcod bycatch allowance, up to 100% of the round weight of salmon on board a vessel, is permitted in IBS, NSEI, SSEIW, West Crawfish Inlet (113-32), Crawfish Inlet THA (113-33), and portions of the Goddard (113-31) and Salisbury Sound (113-62) CSEO spring troll areas.

In waters of Sitka Sound, including spring troll areas Western Channel (113-01), Sitka Sound (113-41), Silver Bay THA (113-35), Deep Inlet THA (113-38), Redoubt Bay (113-30), and portions of Goddard (113-31) and Salisbury Sound (113-62), commercial salmon trollers may retain and possess up to two lingcod aboard a vessel while actively fishing for salmon within waters of the Sitka Sound Special Use Area during the open CSEO lingcod season; however, the amount of lingcod retained may not exceed the 100% CSEO lingcod bycatch weight allowance. Lingcod taken within this area may be retained for a permit holder’s personal use only and may not be sold. Upon taking a lingcod in this area, the permit holder shall mark that lingcod for personal use by immediately removing the dorsal fin of that fish. The head of each personal use lingcod must remain attached to the fish as evidence of meeting the 27-inch minimum size restriction, until that lingcod is weighed and reported on the ADF&G troll salmon fish ticket documenting that fishing trip [5 AAC 28.173(a)(4)].

Having taken no more than two lingcod outside of the Sitka Sound Special Use Area, a permit holder may fish for salmon within the Sitka Sound Special Use Area only after removing the dorsal fin of those lingcod. Vessels in possession of more than two lingcod may not fish for salmon in this area until those lingcod are offloaded.

The waters of the Sitka Sound Special Use Area affected by these lingcod restrictions are defined in 5 AAC 28.150(a) as waters that are enclosed on the north by lines from Kruzof Island at 57°20.50' N lat, 135°45.17' W long, to Chichagof Island at 57°22.05' N lat, 135°43.00' W long, and from Chichagof Island at 57°22.58' N lat, 135°41.30' W long, to Baranof Island at 57°22.28' N lat, 135°40.95' W long, and on the south and west by a line running from the southernmost tip of Sitka Point at 56°59.38' N lat, 135°49.57' W long, to Hanus Point at 56°51.92' N lat, 135°30.50'

W long, to the green day marker in Dorothy Narrows at 56°49.28' N lat, 135°22.75' W long, to Baranof Island at 56°49.28' N lat, 135°22.60' W long (Figure 1).

Lingcod bycatch in the SSEOC spring troll fisheries [Bucareli Bay (103-50) and Port Saint Nicholas (103-60)] is limited to 10%. Lingcod taken in excess of bycatch allowances shall be reported on fish tickets as overage and forfeited to the State of Alaska.

## **ROCKFISH BYCATCH IN STATE WATERS**

All DSR retained in excess of 10% of the round weight of salmon on board the vessel must be weighed and reported as bycatch overage on an ADF&G fish ticket. All proceeds from the sale of excess DSR bycatch taken in state waters shall be surrendered to the state [5 AAC 28.171(a)]. DSR bycatch overages must be reported on fish tickets but may be retained for personal use by the permit holder. The seven species in the DSR assemblage are yelloweye, quillback, canary, copper, China, tiger, and rosethorn rockfish.

## **HALIBUT**

Halibut incidentally taken during an open commercial halibut season by power and hand troll gear operated for salmon consistent with applicable state laws and regulations are legally taken and possessed [5 AAC 28.133(c)]. Commercial halibut may be retained only by Individual Fishing Quota (IFQ) permit holders during the open season for halibut. Trollers making an IFQ halibut landing of 500 lb or less of IFQ weight as determined pursuant to 50 CFR 679.40(h) are exempted from the three-hour prior notice of landing (PNOL) if landed concurrently with a legal landing of salmon harvested using hand troll or power troll gear [50 CFR 679.5(l)(1)(iv)(A)]. Halibut taken incidentally during the troll fishery shall be reported on a troll salmon fish ticket. Contact NOAA Fisheries for detailed information on regulations and landing requirements for the federal IFQ halibut fishery.

An individual aboard a commercial troll vessel operating **hand troll gear** for salmon may retain incidentally taken halibut for subsistence use only under the following conditions:

- There are not any commercial or sport-caught halibut on board the vessel;
- The individual possesses a Subsistence Halibut Registration Certificate (SHARC) issued by NOAA and is fishing in waters designated for subsistence halibut fishing;
- The vessel is not operating an amount of hooks that exceeds hook limits permitted under federal subsistence fishing regulations; and
- There is not any unused halibut IFQ held by any individual on board that vessel for that regulatory area and for the vessel category from which they are fishing.

**Power troll gear is not a legal gear for subsistence halibut fishing; therefore, the retention of incidentally taken halibut for subsistence use while trolling for salmon with power troll gear is prohibited.**

## **OTHER REGULATIONS**

A person aboard a vessel may not fish for groundfish with dinglebar troll or mechanical jigging machines if salmon are on board. A vessel fishing for groundfish with dinglebar troll gear must display the letter “D” and a vessel fishing for groundfish with mechanical jigging machines must display the letter “M”, at all times when fishing with or transporting fish taken with dinglebar troll gear or mechanical jigging machines [5 AAC 28.135(a)(4)]. Letters must be displayed on both sides of the hull, cabin, or mast in symbols at least 12 inches high and one inch wide that contrast

with the background and in a manner that leaves the letter plainly visible and unobscured. A person may not operate a vessel that is displaying one of these letters when the vessel is being used to fish for salmon [5 AAC 28.135(c)].

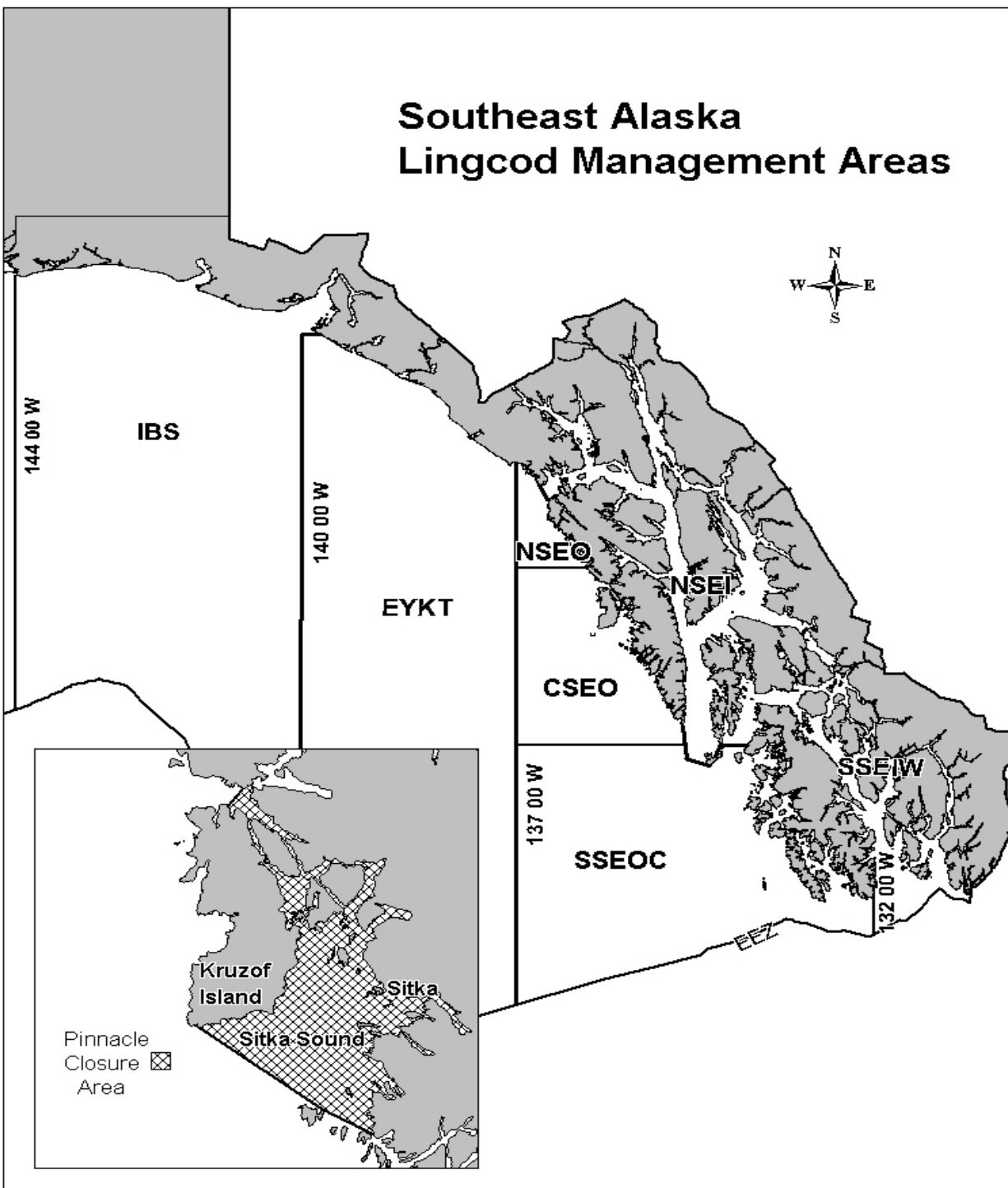


Figure 1.—Southeast Alaska lingcod management areas and restricted waters of Sitka Sound Special Use Area.

## 2021 ALASKA HATCHERY CHINOOK RUN FORECAST

Hatchery facility managers are predicting a total run of approximately 71,800 hatchery Chinook salmon for 2021, as compared to estimated 2020 run of 60,800 fish. The largest hatchery runs for 2021 are expected to Bear Cove, Anita Bay, and Carroll Inlet. Neck Lake coho projections are reported here due to their early run timing, which coincides with the spring fishery. The location of Chinook salmon hatcheries and remote release sites within SEAK are presented in Figure 2.

Table 3.—2021 Alaska hatchery Chinook salmon and Neck Lake coho salmon run forecasts.

Release Site	2020 Total Run Projection	2020 Total Run	2021 Total Run Projection
<b>Ketchikan Area</b>			
Herring Cove	7,100	4,108	7,700
Carroll Inlet	6,000	4,240	9,100
Ketchikan Creek	400	540	820
Neets Bay	11,300	9,487	6,700
<b>Total</b>	<b>24,800</b>	<b>18,375</b>	<b>24,320</b>
<b>Chatham Strait</b>			
Little Port Walter	1,347	1,392	2,031
Kasnyku Bay	842	646	710
Port Armstrong	250	43	150
Gunnuk Creek	142	188	312
<b>Total</b>	<b>2,581</b>	<b>2,269</b>	<b>3,203</b>
<b>Craig/Klawock Area</b>			
Port Saint Nicholas	3,200	2,213	4,900
Coffman Cove	—	11	—
<b>Total</b>	<b>3,200</b>	<b>2,224</b>	<b>4,900</b>
<b>Juneau Area</b>			
Macaulay (Fish Creek, Lena Cove, Gastineau Channel, Auke Bay, Thane)	15,681	7,759	2,660
<b>Total</b>	<b>15,681</b>	<b>7,759</b>	<b>2,660</b>
<b>Petersburg/Wrangell Area</b>			
Anita Bay	10,900	10,512	11,300
Crystal Creek	3,000	2,404	3,400
City Creek	1,000	943	950
<b>Total</b>	<b>14,900</b>	<b>13,859</b>	<b>15,650</b>
<b>Sitka Area</b>			
Crawfish Inlet	905	1,015	1,031
Bear Cove	10,697	13,597	17,700
Halibut Point	2,328	1,705	2,382
Sheldon Jackson	—	—	—
<b>Total</b>	<b>13,930</b>	<b>16,317</b>	<b>21,113</b>
<b>Alaska Hatchery Chinook Totals</b>	<b>75,092</b>	<b>60,803</b>	<b>71,846</b>
Neck Lake Coho	13,800	9,331	27,600

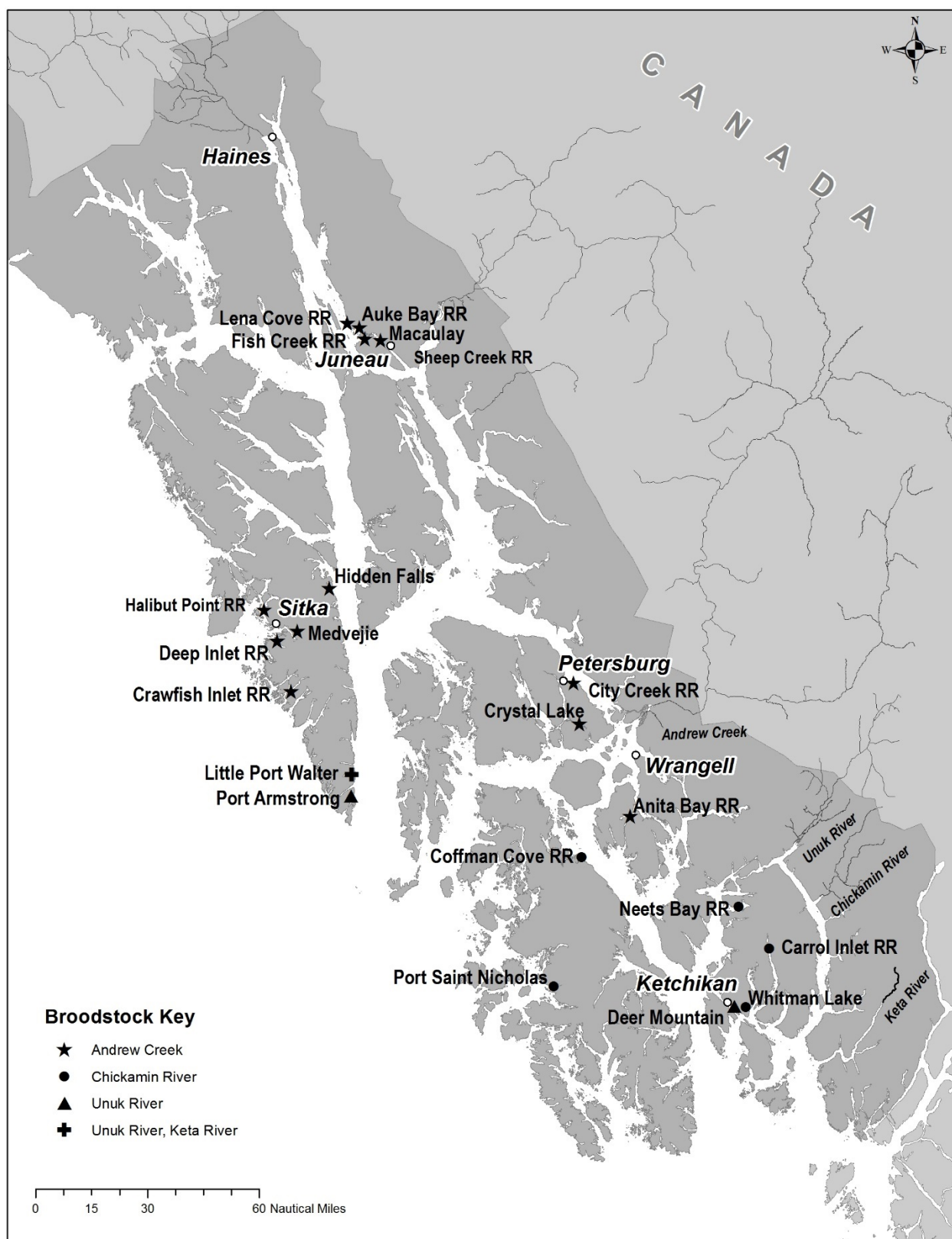


Figure 2.—Location of Chinook salmon hatcheries, remote release sites (RR), and broodstock sources in Southeast Alaska.

## 2021 SPRING TROLL AREAS AND MAPS

### **KETCHIKAN AREAS (Figure 3)**

**Nakat Inlet Terminal Harvest Area (fishery area 101-10):** In the waters of Nakat Inlet north of Surprise Point at 54°49.10' N lat, and west of 130°42.75' W long.

**Mountain Point (fishery area 101-45):** In the waters of George and Carroll Inlets north of a line from Mountain Point at 55°17.57' N lat, 131°32.41' W long, to Cutter Rocks Light at 55°17.34' N lat, 131°31.47' W long, to 55°17.57' N lat, 131°28.18' W long, including all waters of George Inlet and waters of Carroll Inlet south of the latitude of California Head at 55°19.57' N lat.

**Rock Point (fishery area 101-46):** In the waters of Carroll Inlet north of the latitude of California Head at 55°19.57' N lat, and south of the latitude of Nigelius Point at 55°33.50' N lat.

**Carroll Inlet Terminal Harvest Area (fishery area 101-48):** In the waters of Carroll Inlet, from June 1 to 30, the THA includes only those waters of Carroll Inlet north of the latitude Nigelius Point at 55°33.50' N lat. The waters north of Nigelius Point and south of the latitude of 55°34.83' N lat, (approximately 1.3 nautical miles north Nigelius Point) are open exclusively to troll gear from June 1 through 12:00 noon, June 15 (Figure 4).

**Neets Bay Terminal Harvest Area (fishery area 101-95):** In the waters of Neets Bay east of the longitude of the easternmost tip of Bug Island at 131°39.14 W long, and west of the closed waters at the head of the bay. The closed waters at the head of the bay are those waters east of 131°29.86' W long, until the barrier net is in place; at that time, the closed waters are those waters east of the barrier net (Figure 5).

**The THA will open to troll gear from 12:01 a.m., June 15, through 11:59 p.m., July 6, unless closed by emergency order. The Neets Bay THA will expand on July 1, for troll gear only, to include those waters of Neets Bay east of the longitude of Chin Point at 131°42.10' W long; however, Chinook salmon retention and possession is prohibited in this expanded area between the Bug Island line and Chin Point during the first summer troll Chinook salmon retention period.**



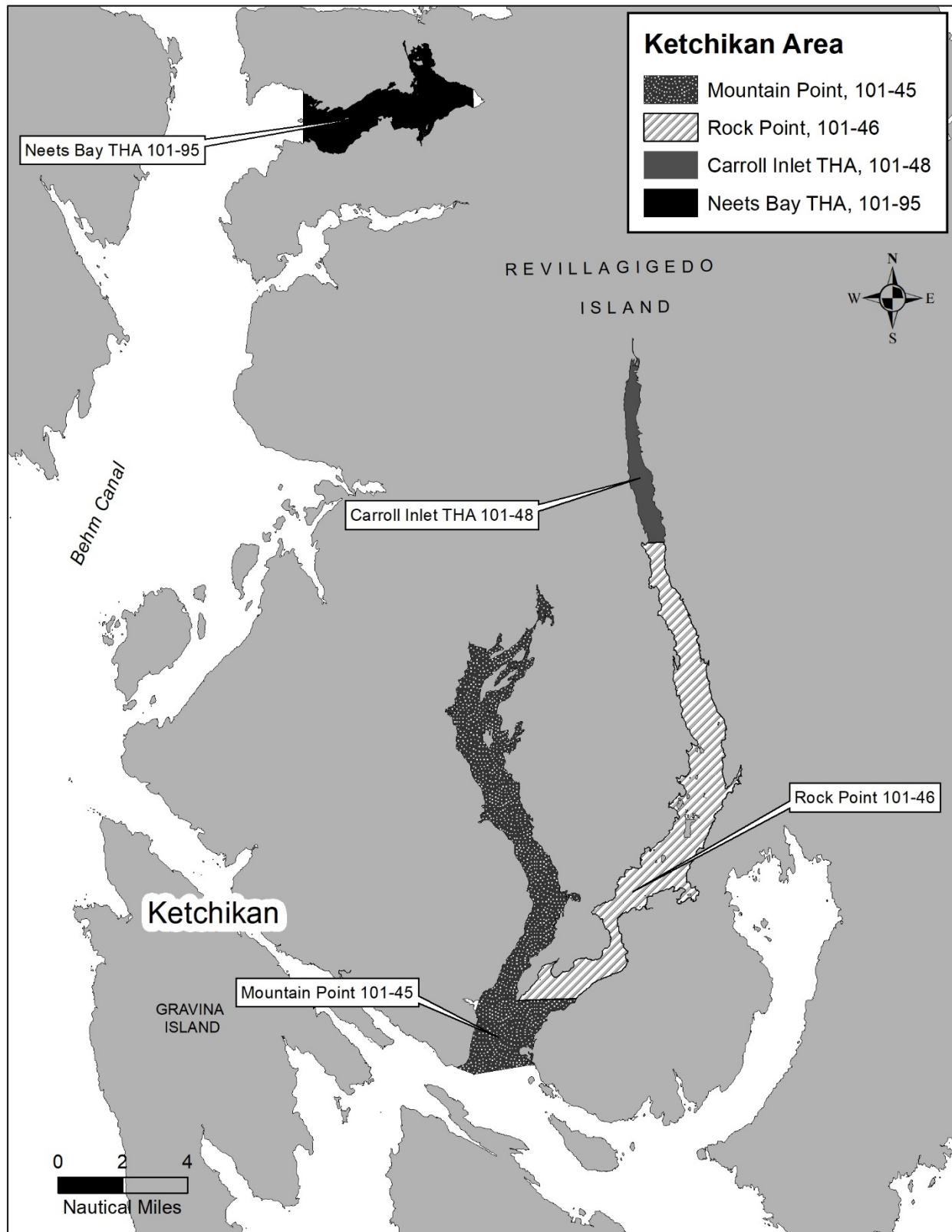


Figure 3.–Ketchikan spring troll areas.

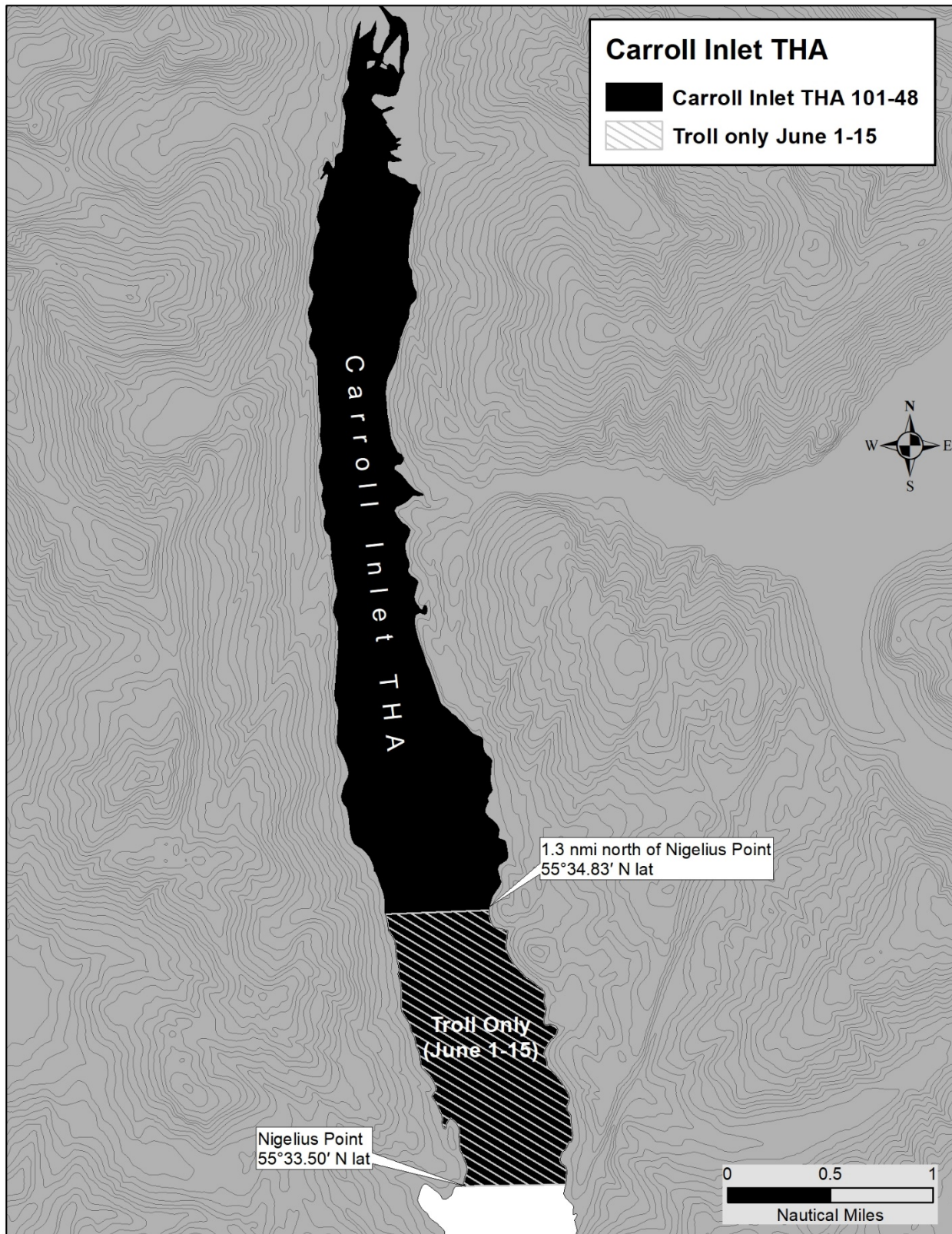


Figure 4.—Carroll Inlet Terminal Harvest Area.



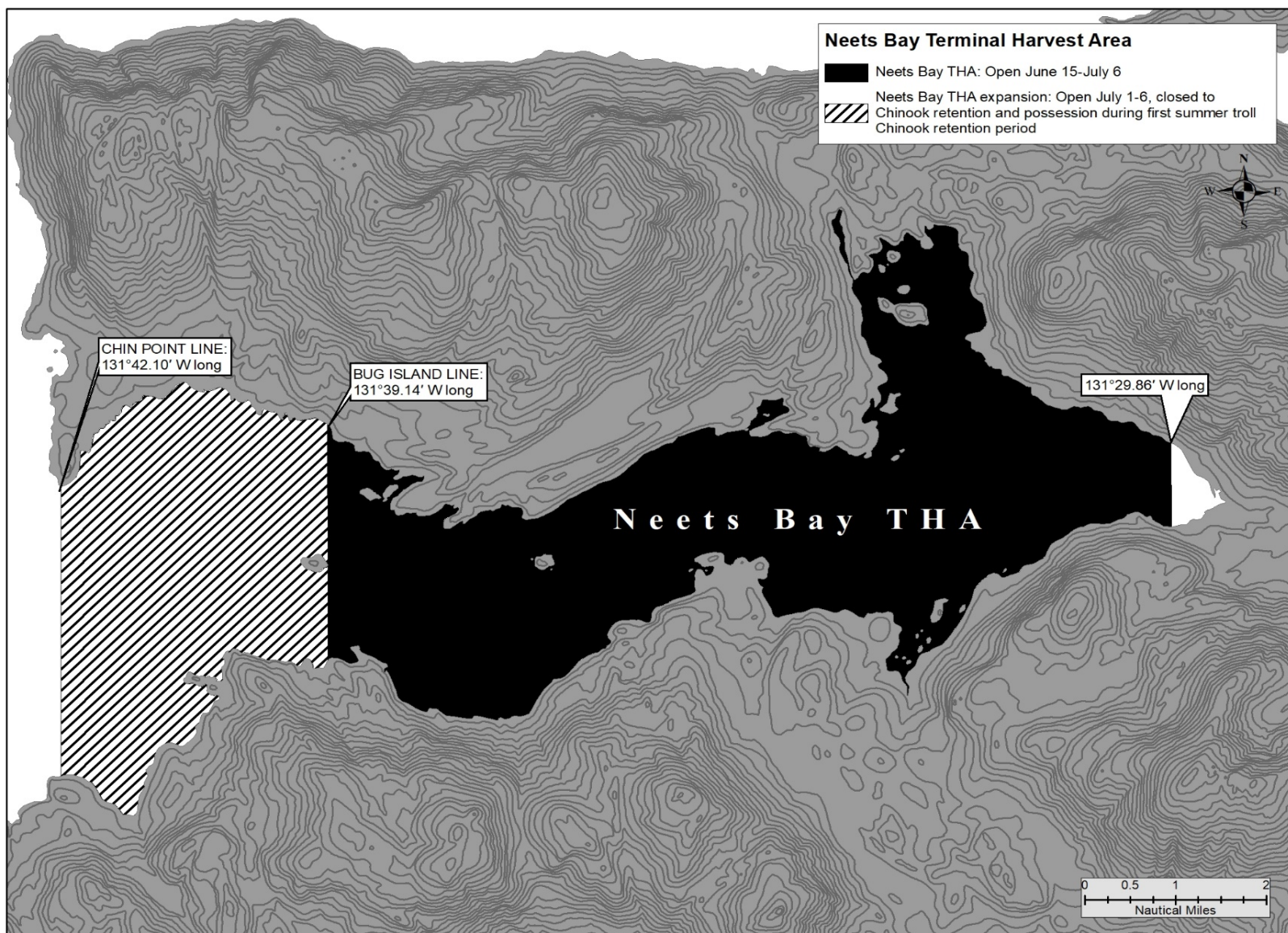


Figure 5.—Neets Bay Terminal Harvest Area.

## **CRAIG AND WRANGELL AREAS (Figure 6)**

**Bucareli Bay (fishery area 103-50) modified area:** In the waters of Ursua Channel and Bucareli, Trocadero, and San Alberto bays south of a line from Point Polocano at 55°32.37' N lat, 133°17.38' W long, to the northernmost tip of Abbess Island at 55°33.78' N lat, 133°10.81' W long, to a point on Peratrovich Island at 55°35.19' N lat, 133°07.09' W long, to Cemetery Point at 55°33.82' N lat, 133°06.36' W long, to the northernmost tip of Klawock Island at 55°33.42' N lat, 133°06.39' W long, south and west of a line from Cape Suspiro at 55°27.48' N lat, 133°08.54' W long, to the northernmost tip of Toti Island at 55°24.90' N lat, 133°07.34' W long, to the northernmost tip of Culebrina Island at 55°25.00' N lat, 133°04.79' W long to a point on the Prince of Wales Island shore at 55°25.30' N lat, 133°04.69' W long, and northeast of a line from Point Amargura at 55°27.00' N lat, 133°21.65' W long to 55°24.67' N lat, 133°21.18' W long, to Point Providence at 55°21.51' N lat, 133°16.23' W long.

**Port Saint Nicholas (fishery area 103-60) modified area:** In the waters of Port Saint Nicholas and Bucareli Bay enclosed by a line from Cape Suspiro at 55°27.48' N lat, 133°08.54' W long, to the northernmost tip of Toti Island at 55°24.90' N lat, 133°07.34' W long, to the northernmost tip of Culebrina Island at 55°25.00' N lat, 133°04.79' W long to a point on the Prince of Wales Island shore at 55°25.30' N lat, 133°04.69' W long.

**Anita Bay Terminal Harvest Area (fishery area 107-35):** In the waters of Anita Bay south and west of a line from the tip of Anita Point at 56°13.68' N lat, 132°22.48' W long, to a point on the northern shore at 56°14.26' N lat, 132°23.93' W long (Figure 7).

From June 1–15, the waters of the Anita Bay THA north and east of a line from 56°12.90' N lat, 132°24.51' W long, to 56°12.75' N lat, 132°23.50' W long, are open to troll gear only.

From June 15 through July 10, the waters within .25 nmi of the northern shoreline of Anita Bay west of a line from 56°12.33' N lat, 132°26.19' W long, to 56°12.06' N lat, 132°26.19' W long, and east of a line from 56°11.96' N lat, 132°29.57' W long, to 56°11.73' N lat, 132°29.36' W long, will be open.

- NOTE:** (1) *From June 15 through June 25, the waters of the Anita Bay THA west of 132°26.19' W long, are closed to the harvest of salmon.*  
(2) *From June 26 through July 1, the waters of Anita Bay THA west of 132°26.98' W long, are closed to the harvest of salmon.*  
(3) *From July 2 through July 10, the waters of Anita Bay THA west of 132°28.00' W long, are closed to the harvest of salmon.*

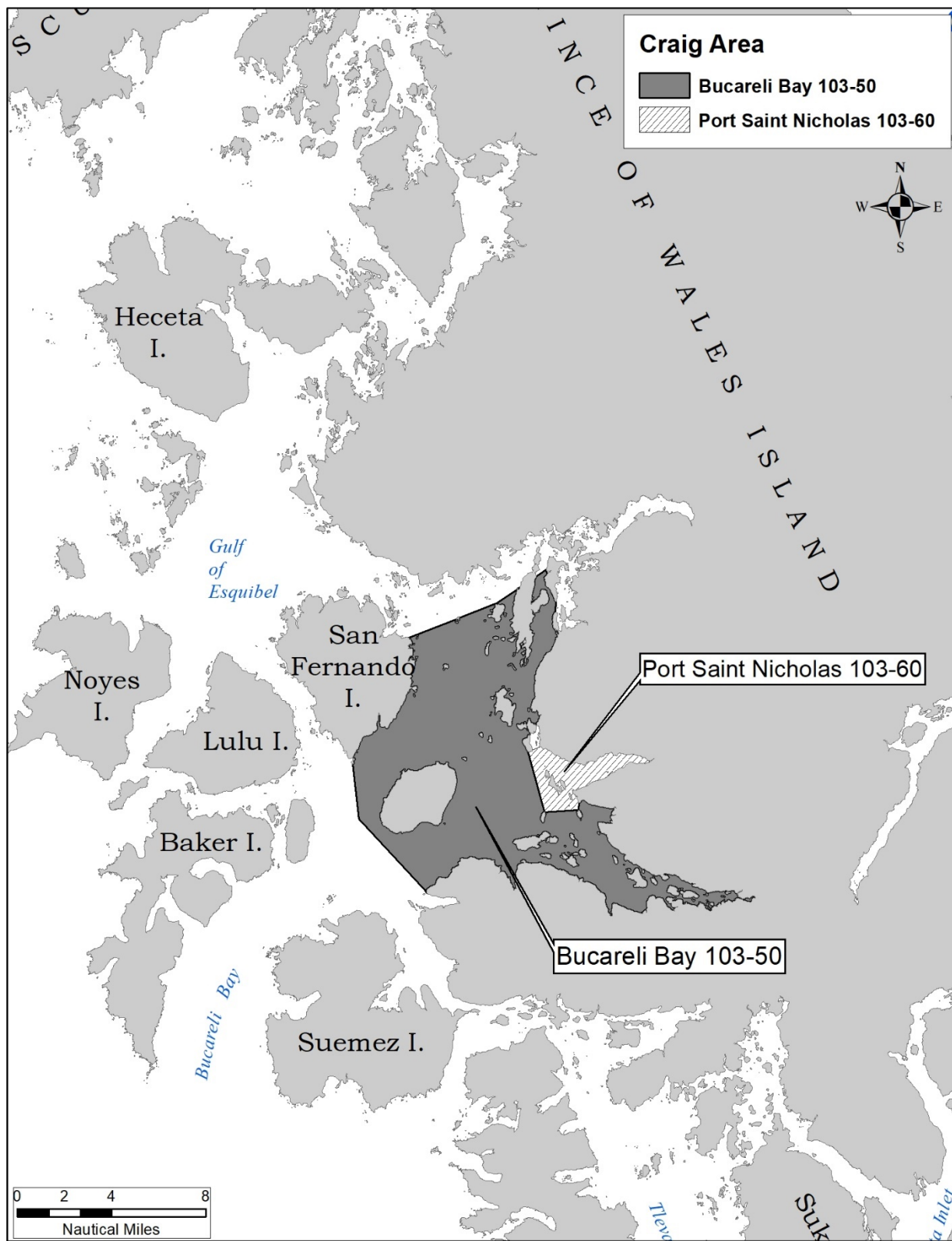


Figure 6.—Craig spring troll areas.



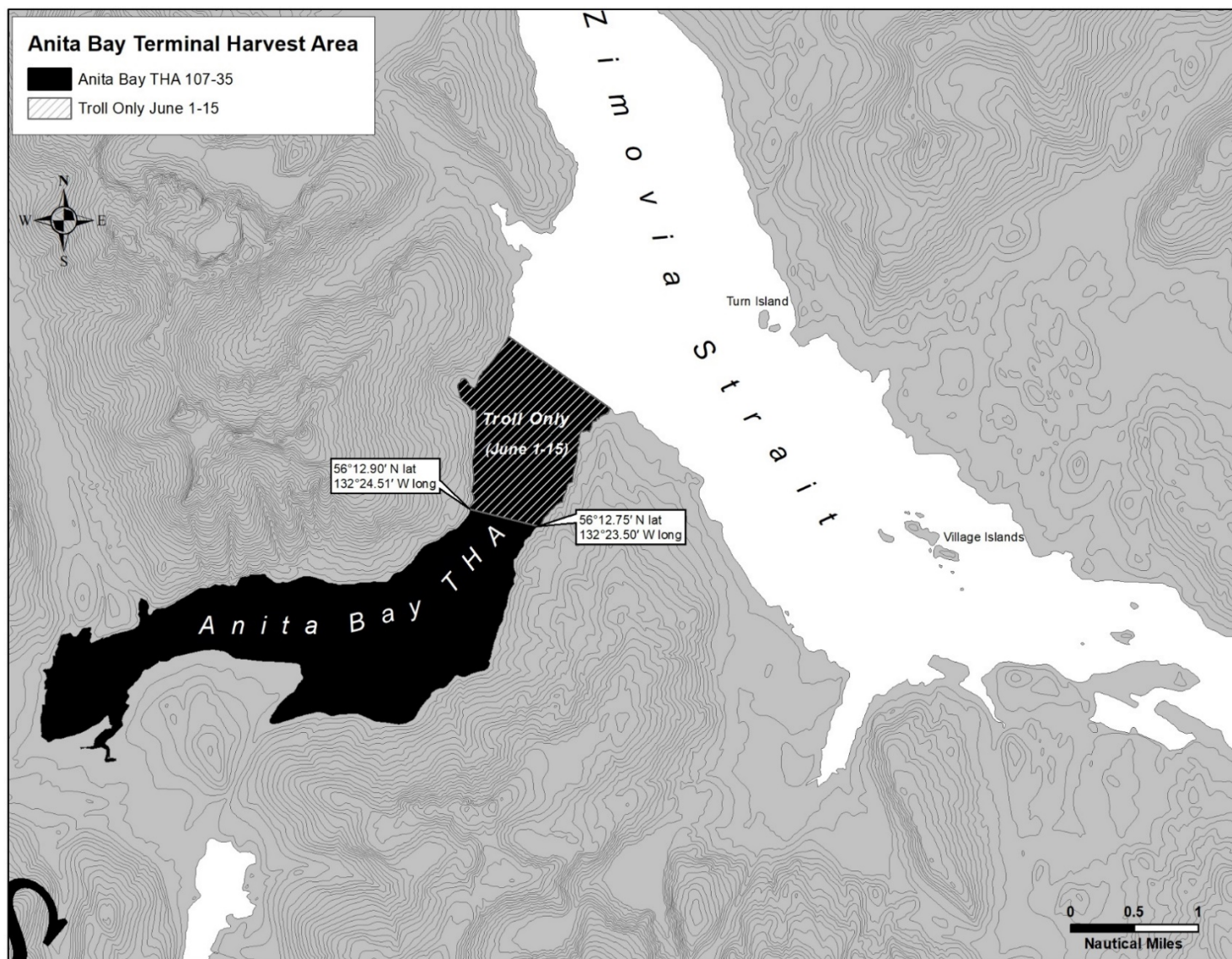


Figure 7.—Anita Bay Terminal Harvest Area.

## **CHATHAM STRAIT AND FREDERICK SOUND AREAS (Figure 8)**

**Port Armstrong Special Harvest Area (fishery area 109-11):** In the waters of Port Armstrong west of a line from Point Eliza at 56°17.73' N lat, 134°38.75' W long, to a point on the Baranof Island shoreline at 56°17.98' N lat, 134°38.35' W long. Waters north of a line from 56°17.61' N lat, 134°40.27' W long, to 56°17.67' N lat, 134°39.64' W long are closed.

**Southeast Cove Terminal Harvest Area (fishery area 109-41):** In the waters of Keku Strait enclosed by a line from a rocky point on the northern end of Kuiu Island located on the east side of Southeast Cove at 56°52.95' N lat, 134°01.33' W long, to the northwest corner of Hound Island at 56°53.12' N lat, 133°56.77' W long, then northwest connecting points along the northern shore of Keku Islands at 56°53.98' N lat, 133°57.58' W long, to 56°54.90' N lat, 133°59.53' W long, to 56°55.93' N lat, 134°00.97' W long, to 56°55.95' N lat, 134°02.15' W long, to 56°55.22' N lat, 134°02.53' W long, to 56°56.37' N lat, 134°06.62' W long, then to the northwest corner of Payne Island at 56°57.45' N lat, 134°08.75' W long, then south to a point on Kuiu Island at 56°55.08' N lat, 134°09.25' W long (Figure 9).

**Keku Strait Hatchery Chum Salmon Area (fishery area 109-42):** In the waters of Districts 9 and 10 enclosed by a line extending from approximately 1.0 nmi north of Cornwallis Point Light at 56°56.80' N lat, 134°16.43' W long to Pinta Rocks Light at 57°05.15' N lat, 134°00.76' W long, to Cape Bendel at 57°04.27' N lat, 134°00.76' W long. Waters of the Southeast Cove THA and the Gunnuk Creek SHA are excluded.

**Thomas Bay Special Harvest Area (fishery area 110-12):** In the waters of Thomas Bay northeast of a line from Point Vandeput at 57°00.94' N lat, 133°00.02' W long, to Wood Point at 56°59.54' N lat, 132°56.95' W long, northwest of a line from a point on the mainland shoreline at 56°59.57' N lat, 132°54.02' W long, to Ruth Island at 57°00.42' N lat, 132°51.07' W long, north of a line from a point on the southeastern shoreline of Ruth Island at 56°58.70' N lat, 132°49.13' W long, to the mainland shoreline at 56°58.70' N lat, 132°47.32' W long, west of a line from the mainland shoreline at 56°59.38' N lat, 132°47.60' W long, to the southern tip of Spray Island at 56°59.80' N lat, 132°47.73' W long, to the northern tip of Spray Island at 57°00.07' N lat, 132°47.80' W long, to the mainland shoreline at 57°00.56' N lat, 132°47.57' W long, and south of a line from 57°03.00' N lat, 132°49.62' W long, to 57°03.00' N lat, 132°52.03' W long.

The waters of Spurt Cove are closed northwest of a line from 57°01.98' N lat, 132°52.49' W long, to 57°02.08' N lat, 132°52.37' W long. Waters northeast of a line from the northern tip of Spray Island at 57°00.07' N lat, 132°47.80' W long, to a point on the northern boundary line approximately .50 nmi from the mainland shoreline at 57°03.00' N lat, 132°50.55' W long, are closed Saturdays and Sundays of each week (Figure 10).

**Hidden Falls Terminal Harvest Area (fishery area 112-22) modified area:** In the waters of Chatham Strait, only those waters of Section 12-A **within 1.0 nmi of the Baranof Island shoreline** south of the latitude of South Point and north of 57°06.83' N lat (south of Takatz Bay) excluding waters of Kelp Bay [5 AAC 33.374(a)]. Beginning June 27, the THA will expand from within 1.0 to within 2.0 nmi of the Baranof Island shoreline.

The waters of the Hidden Falls THA that are north and west of a line from ADF&G regulatory markers located at 57°13.17' N lat, 134°51.86' W long to 57°13.08' N lat, 134°52.02' W long and north of a line from 57°13.05' N lat, 134°52.24' W long to 57°13.06' N lat, 134°52.20' W long **are closed to commercial salmon fishing.**

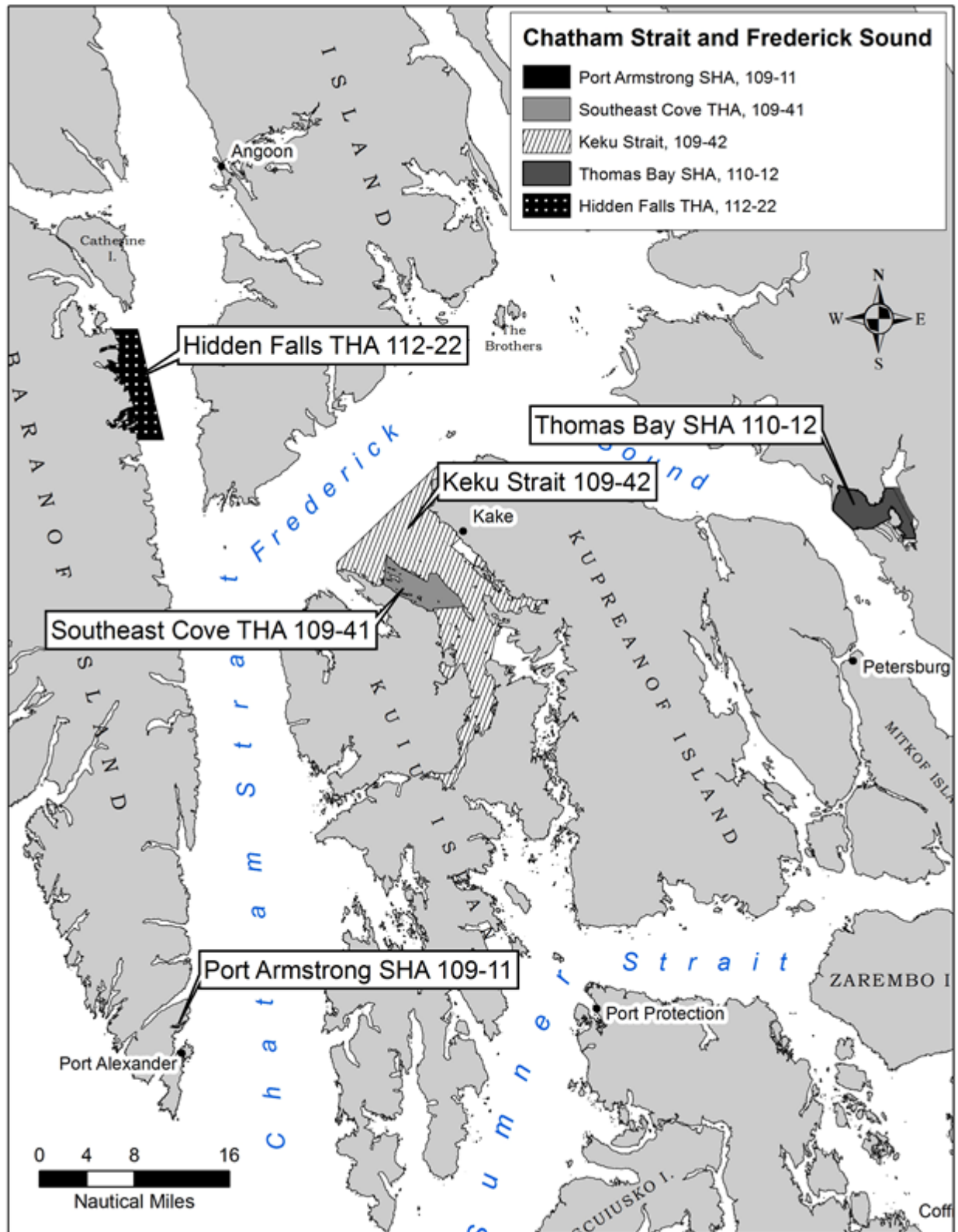


Figure 8.—Chatham Strait and Fredrick Sound spring troll areas.



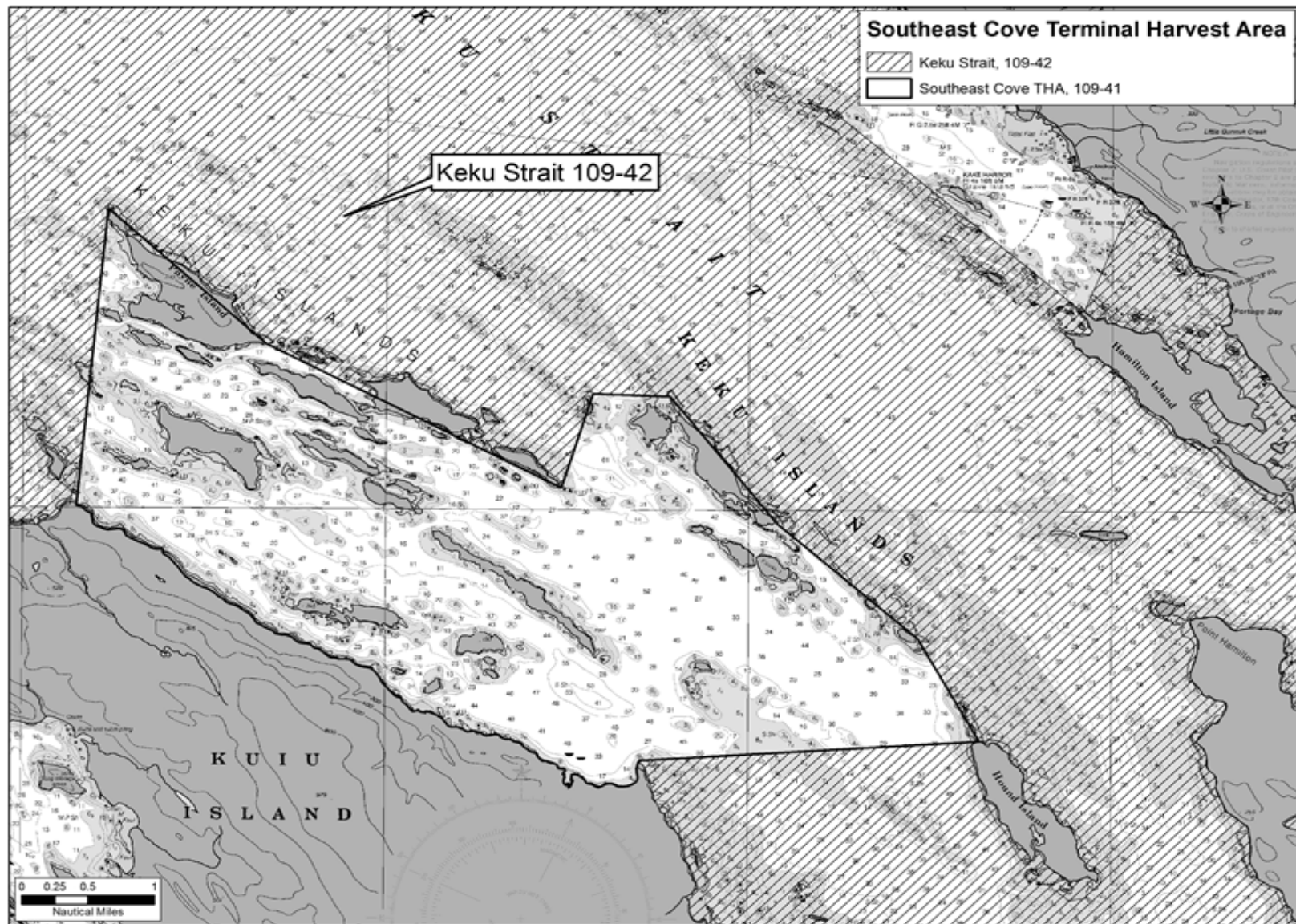


Figure 9.—Southeast Cove Terminal Harvest Area.

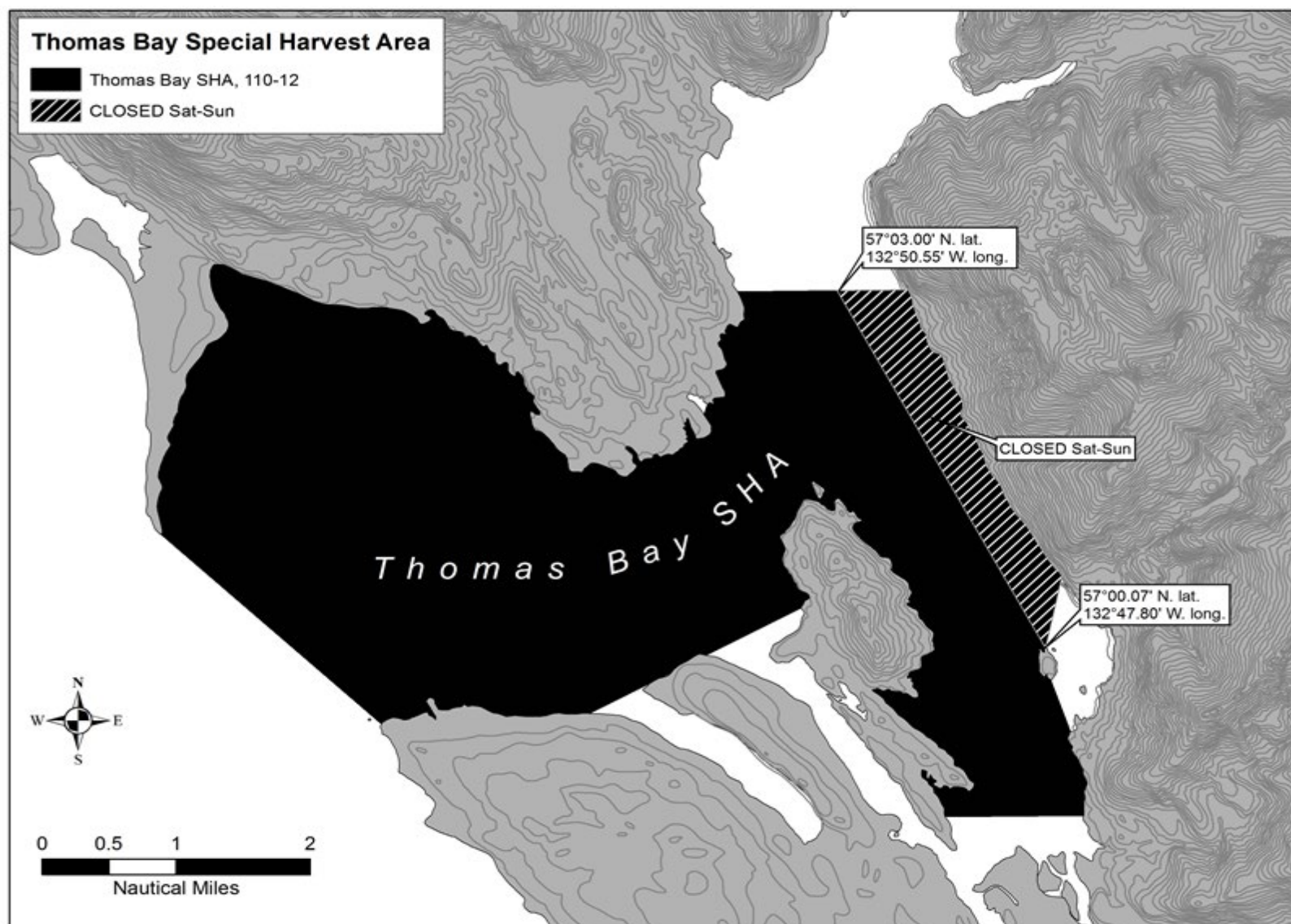


Figure 10.—Thomas Bay Special Harvest Area.

## **SITKA AREAS (Figure 11)**

**Western Channel (fishery area 113-01):** In the waters of Sitka Sound northeast of a line from Kulichkof Rock to Vitskari Island Light to a point on Kruzof Island at 57°03.42' N lat, 135°36.00' W long, southwest of a line from a point on Kruzof Island at 57°05.00' N lat, 135°35.00' W long, to 57°01.50' N lat, 135°24.25' W long (the intersection of a line from a point on Kruzof Island at 57°05.00' N lat, 135°35.00' W long, through The Eckholms Light, with a line from the southernmost tip of Makhnati Island to Kulichkof Rock), to Kulichkof Rock.

**Redoubt Bay (fishery area 113-30):** In the waters of Sitka Sound south of a line from the westernmost tip of Cape Burunof to Kulichkof Rock and east of a line from Kulichkof Rock to the northwesternmost point on Peisar Island, and from the southernmost point on Peisar Island to the southernmost point on Viesokoi Rock to a point on Baranof Island at 56°51.40' N lat, 135°23.49' W long.

**Goddard (fishery area 113-31) modified area:** In the waters enclosed by a line from Baranof Island at 56°51.40' N lat, 135°23.49' W long, to the southernmost point on Viesokoi Rock, to the southernmost point on Peisar Island, and from a point on Peisar Island at 56°53.00' N lat, 135°26.44' W long, to Middle Rock at 56°50.91' N lat, 135°27.19' W long, to a point on Maid Island at 56°50.25' N lat, 135°27.74' W long, to the northwesternmost tip of Legma Island at 56°50.07' N lat, 135°27.19' W long, and from a point on the eastern shore of Legma Island at 56°49.20' N lat, 135°26.93' W long to the northern tip of Pishak Island at 56°48.68' N lat, 135°26.21' W long, to a point on Elovai Island at 56°48.91' N lat, 135°24.89' W long, and north and west of a line from Elovai Island at 56°49.44' N lat, 135°23.15' W long, to a point on Baranof Island at 56°49.58' N lat, 135°22.60' W long.

**West Crawfish Inlet (fishery area 113-32):** In the waters of West Crawfish Inlet, First Narrows, and Second Narrows northeast of a line from 56°46.60' N lat, 135°18.53' W long, to 56°43.30' N lat, 135°17.81' W long, excluding all waters of the Crawfish Inlet THA (Figure 12).

**Crawfish Inlet Terminal and Special Harvest Areas (fishery area 113-33):** In the waters east of a line from 56°44.16' N lat, 135°15.80' W long, to 56°43.30' N lat, 135°17.81' W long, to 56°41.93' N lat, 135°17.54' W long, to 56°41.14' N lat, 135°13.80' W long, including the waters of Jamboree Bay, Cedar Pass south of 56°47.14' N lat, and Crawfish Inlet west of 135°11.05' W long. Waters of the SHA, east of 135°11.05' W long, are open concurrent to the THA (Figure 12).

**Silver Bay Terminal Harvest Area (fishery area 113-35):** In the waters of Silver Bay east of a line from Entry Point Light at 57°01.98' N lat, 135°15.00' W long, to Silver Point at 57°00.82' N lat, 135°18.10' W long. The **waters of Bear Cove are closed** east of a line from a point on the south shore at 57°00.77' N lat, 135°09.08' W long, to the north shore at 57°00.94' N lat, 135°09.23' W long (Figure 13).

**Sitka Sound (fishery area 113-41):** In the waters of Sitka Sound, Krestof Sound, and Neva Strait south of 57°15.00' N lat, and north and east of a line from the westernmost tip of Cape Burunof to Kulichkof Rock to 57°01.50' N lat, 135°24.25' W long (the intersection of a line from a point on Kruzof Island at 57°05.00' N lat, 135°35.00' W long, through The Eckholms Light, with a line from the southernmost tip of Makhnati Island to Kulichkof Rock), to a point on Kruzof Island at 57°05.00' N lat, 135°35.00' W long, including the waters of Nakwasina Passage, Nakwasina Sound, and Katlian Bay. **The waters of the Silver Bay and Deep Inlet THAs, as described in**

this section, are included in the Sitka Sound spring troll area through May 31. These areas will open as the Silver Bay and Deep Inlet THAs beginning June 1.

**Deep Inlet Terminal Harvest Area (fishery area 113-38):** In the waters of Deep Inlet, Aleutkina Bay, and contiguous waters south of a line from a point west of Pirates Cove at 56°59.35' N lat, 135°22.63' W long, to the westernmost tip of Long Island at 56°59.95' N lat, 135°21.92' W long, to the easternmost tip of Long Island at 56°59.95' N lat, 135°20.36' W long, to the westernmost tip of Emgeten Island at 57°00.08' N lat, 135°20.01' W long, to the westernmost tip of Error Island at 57°00.53' N lat, 135°19.50' W long, to the westernmost tip of Berry Island at 57°00.32' N lat, 135°18.68' W long, to the southernmost tip of Berry Island at 57°00.27' N lat, 135°18.51' W long, to the westernmost tip of the southernmost island in the Kutchuma Island group at 57°00.14' N lat, 135°18.27' W long, to the easternmost tip of the southernmost island in the Kutchuma Island group at 57°00.07' N lat, 135°17.93' W long, to the westernmost tip of an unnamed island at 57°00.30' N lat, 135°17.67' W long, to a point on the southern side of the unnamed island at 57°00.08' N lat, 135°16.78' W long, and then to a point on the Baranof Island shore at 56°59.93' N lat, 135°16.53' W long. Waters of Sandy Cove will be closed (Figure 14).

**From June 1 through June 19, the waters of Deep Inlet west of 135°20.75' W long, are open continuously to troll gear as part of the THA, with waters east of 135°20.75' W long, open to troll gear when net fisheries are closed. On June 20, all waters of the Deep Inlet THA will follow the rotational schedule with troll openings occurring on days when net gear is closed.**

**Salisbury Sound (fishery area 113-62):** In the waters of Peril Strait south of the latitude of Pogibshi Point at 57°30.56' N lat, waters of Salisbury Sound east of 135°46.00' W long, including Sukoi Inlet and waters of Neva Strait north of 57°15.00' N lat.

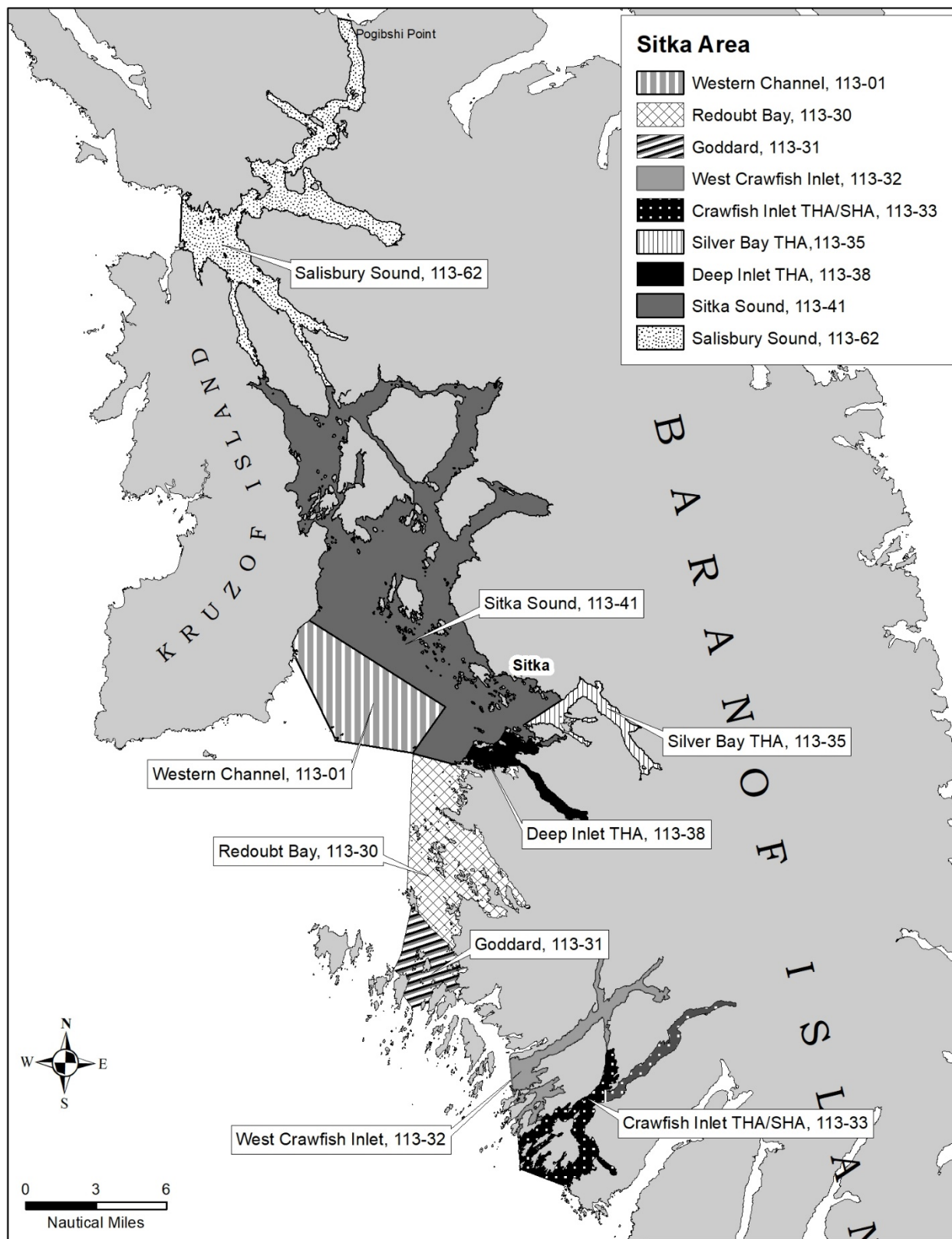


Figure 11.—Sitka spring troll areas.



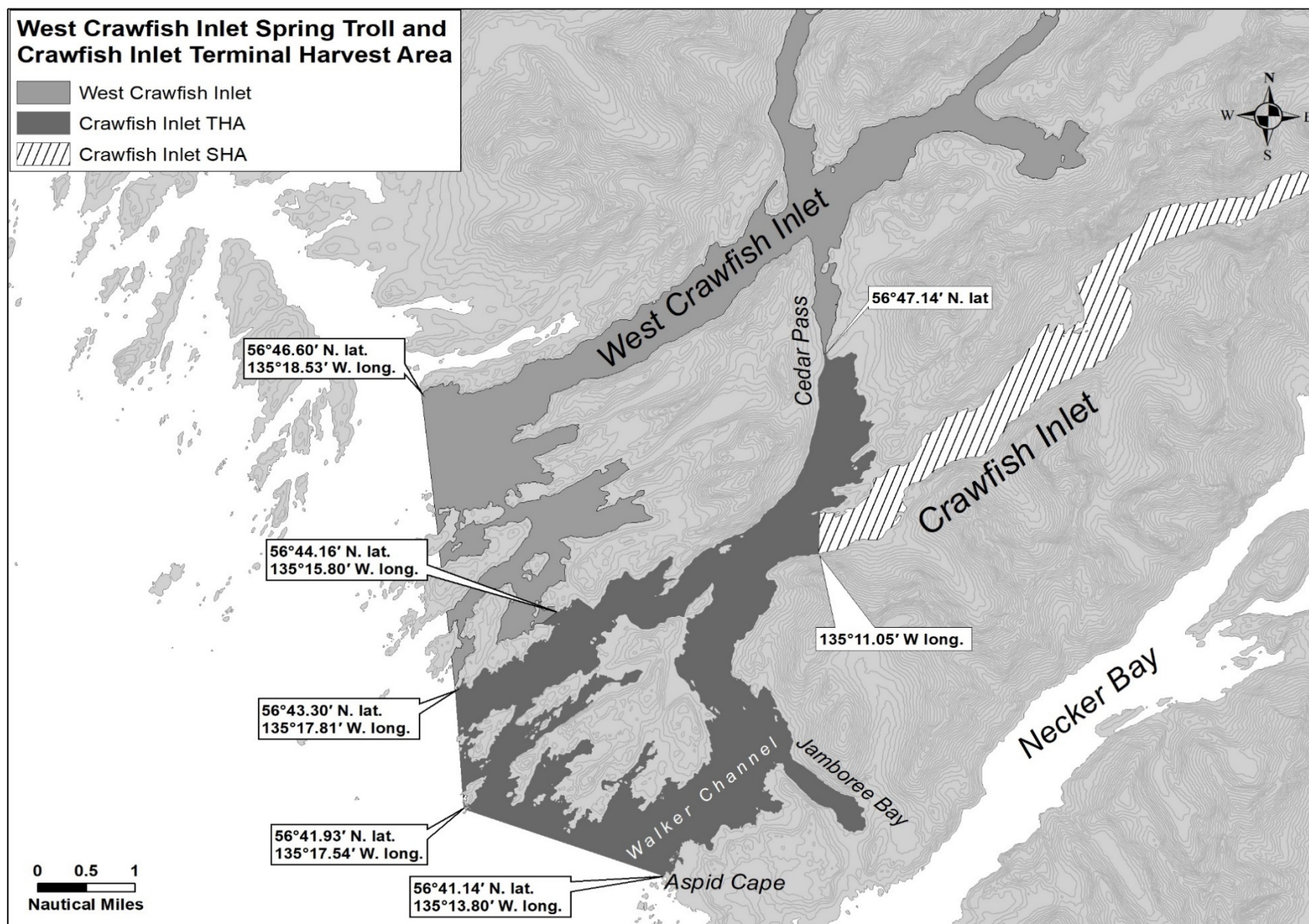


Figure 12.—West Crawfish Inlet spring troll, Crawfish Inlet Terminal and Special Harvest Areas..

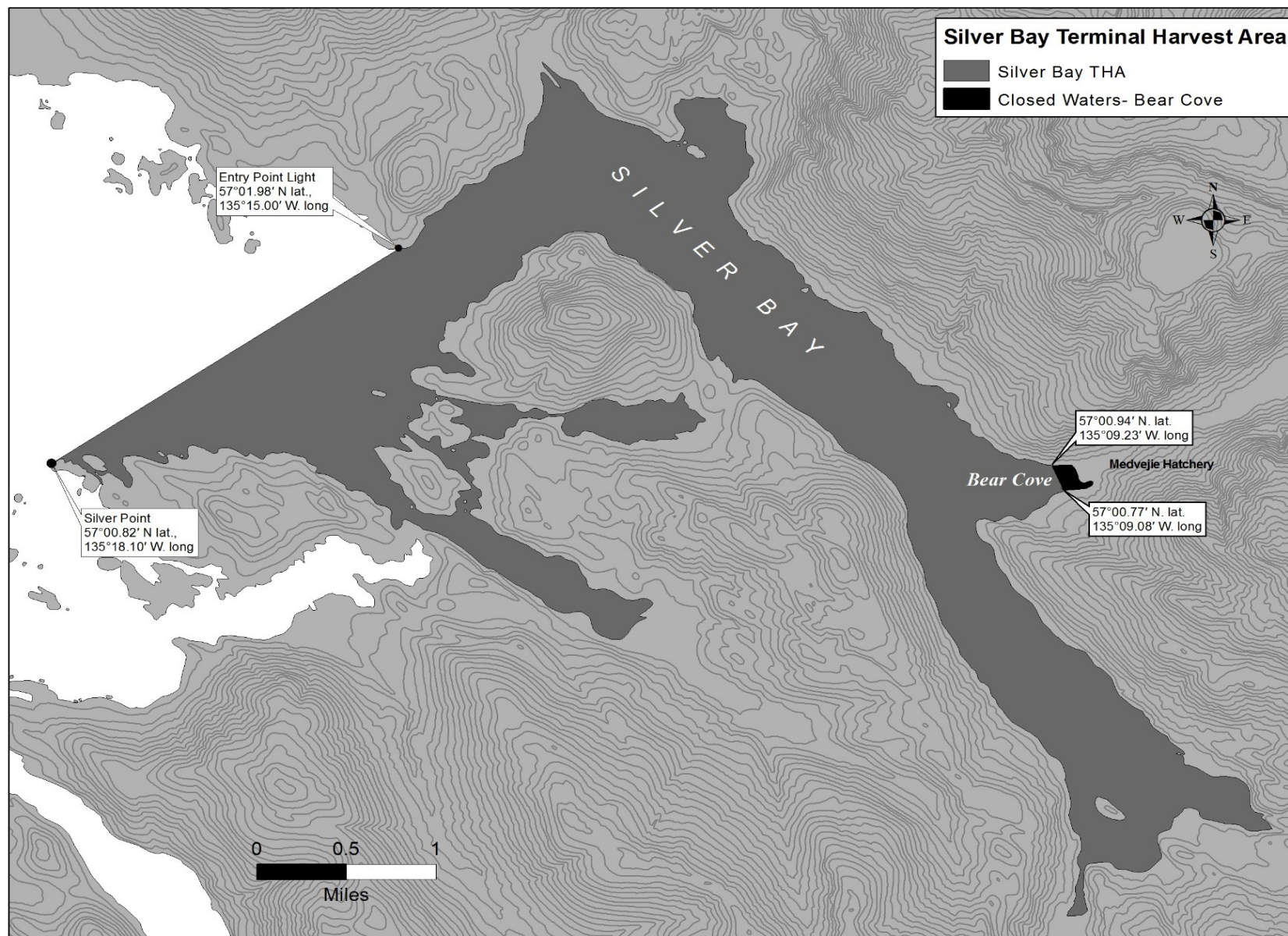


Figure 13.-Silver Bay Terminal Harvest Area.



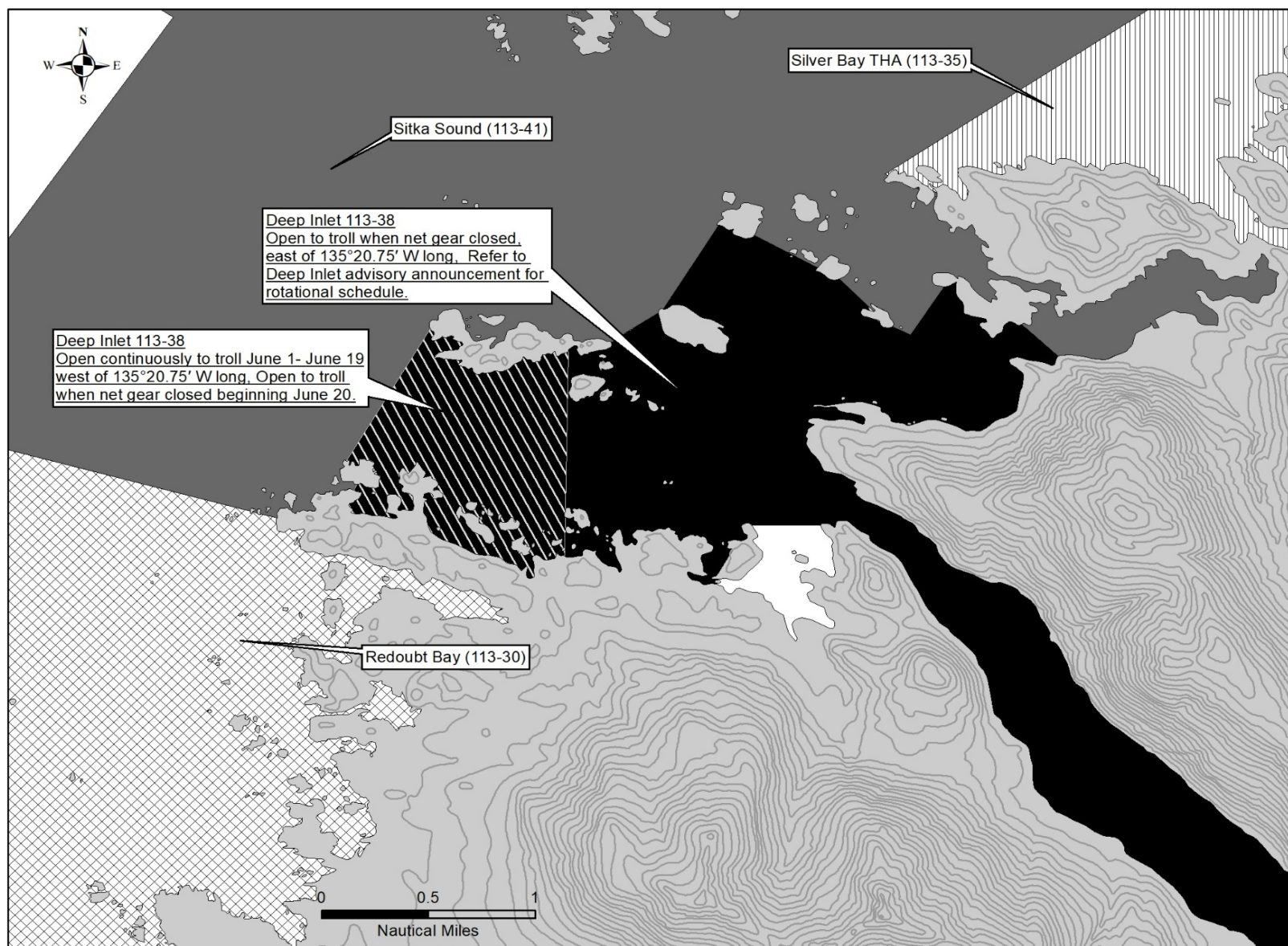


Figure 14.—Deep Inlet Terminal Harvest Area.



## **NORTH CHATHAM STRAIT AND ICY STRAIT HATCHERY CHUM SALMON AREAS**

(Figure 15)

**Northern Chatham Strait (fishery area 112-16):** In the waters enclosed by a line from 58°11.29' N lat, 134°53.27' W long, to 58°10.40' N lat, 135°02.63' W long, to 58°07.78' N lat, 135°00.78' W long, to 58°05.81' N lat, 134°47.09' W long.

**Cross Sound (fishery area 114-21):** In waters of Section 14-A west of a line from the southernmost tip of Point Dundas at 58°18.93' N lat, 136°16.79' W long to the westernmost tip of Lemesurier Island at 58°16.74' N lat, 136°09.50' W long, to the prominent point on the northeastern side of the Inian Peninsula at 58°13.43' N lat, 136°16.75' W long, east of the line of longitude extending south from the southernmost tip of Taylor Island at 58°16.98' N lat, 136°29.02' W long to the point on that line that intersects at 58°10.00' N lat, north of a line that continues east to Althorp Rock Light at 58°09.98' N lat, 136°21.56' W long, and west of the line continuing north to the light at the entrance to Elfin Cove at 58°11.81' N lat, 136°21.07' W long.

**South Passage (fishery area 114-23):** In the waters of Icy Strait south and east of a line extending from the prominent point on the northeastern side of Inian Peninsula at 58°13.43' N lat, 136°16.75' W long, to the westernmost tip of Lemesurier Island at 58°16.74' N lat, 136°09.50' W long, from the northernmost tip of Lemesurier Island at 58°19.14' N lat, 136°02.43' W long, to Point Gustavus at 58°22.77' N lat, 135°55.07' W long, and east of a line from Point Adolphus at 58°17.25' N lat, 135°47.00' W long, to a point 1.0 nmi north of Point Adolphus at 58°18.04' N lat, 135°47.00' W long, north of a line continuing southwest to 58°14.65' N lat, 135°32.20' W long, and west of the line extending north from that point through Noon Point on the 135°32.20' W long, including the waters of Icy Passage.

**Homeshore (fishery area 114-25):** In the waters of Icy Strait east of the longitude of Noon Point at 135°32.20' W long and west of 135°09.60' W long, and north of a line from 58°09.58' N lat, 135°09.60' W long, to the northern tip of the northernmost island of the Sisters Islands at 58°10.78' N lat, 135°15.48' W long, to 58°14.65' N lat, 135°32.20' W long.

**Point Couverden (fishery area 114-26):** In the waters enclosed by a line from 58°11.63' N lat, 135°09.60' W long, to 58°09.58' N lat, 135°09.60' W long, to 58°07.78' N lat, 135°00.78' W long, to 58°10.00' N lat, 135°02.35' W long, to 58°10.00' N lat, 135°06.24' W long, to 58°11.63' N lat, 135°09.60' W long.

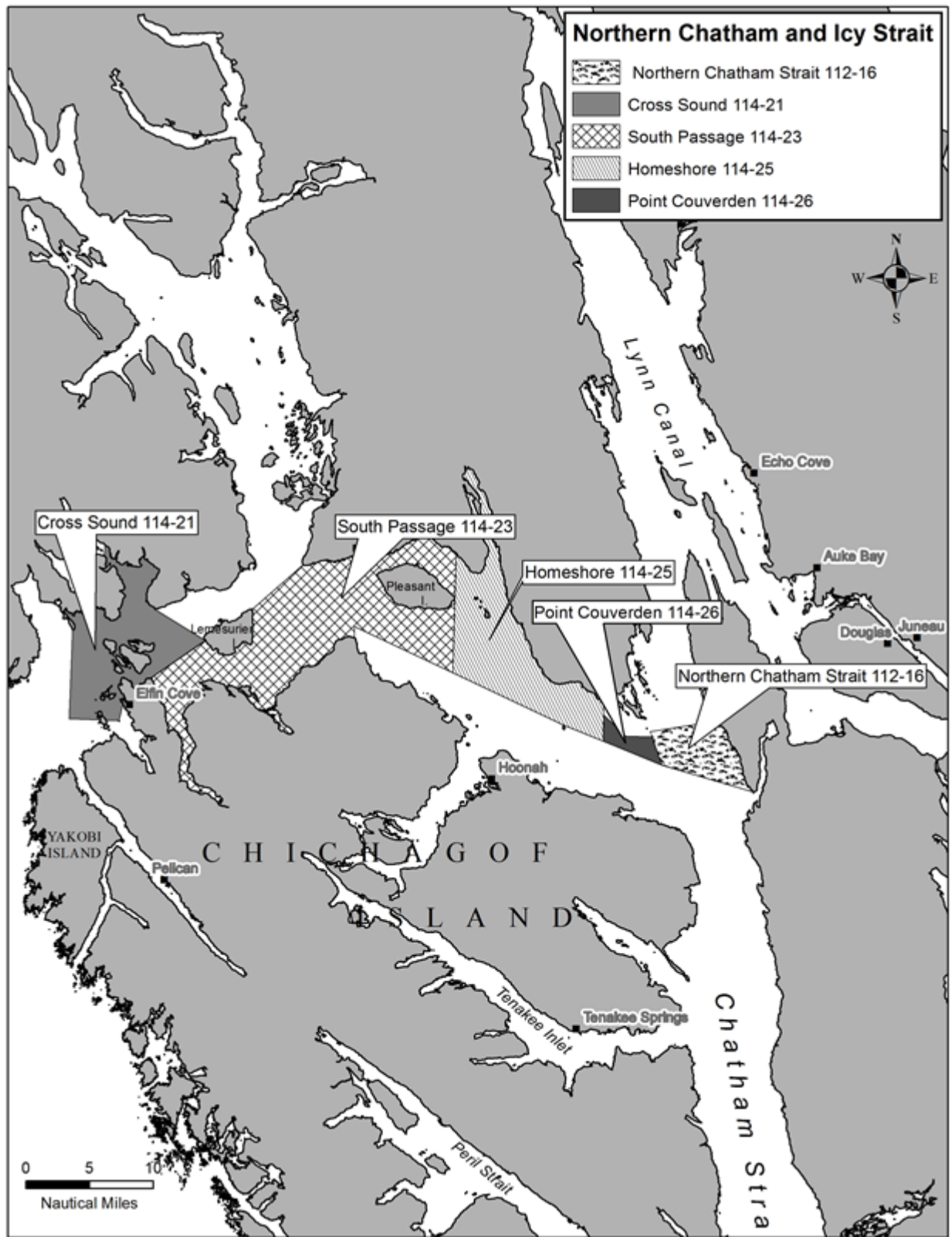


Figure 15.—North Chatham Strait and Icy Strait spring troll chum salmon areas.

### YAKUTAT AREA (Figure 16)

**Yakutat Bay (Fishery Area 183-10):** In the waters of Yakutat Bay east of a line from Point Manby at 59°41.66' N lat, 140°19.70' W long to Ocean Cape at 59°32.06' N lat, 139°51.46' W long.



Figure 16.—Yakutat Bay spring troll area.

## **FISHERY CONTACTS**

The following are Division of Commercial Fisheries contacts regarding this management plan:

Grant Hagerman  
Troll Management Biologist  
304 Lake Street, #103  
Sitka, Alaska 99835  
(907) 747-6688

Troy Thynes  
Regional Management Coordinator  
P. O. Box 667  
Petersburg, Alaska 99833  
(907) 772-3801

Rhea Ehresmann  
Groundfish Project Leader  
304 Lake Street, #103  
Sitka, Alaska 99835  
(907) 747-6688

Mike Vaughn  
Assistant Troll Management Biologist  
304 Lake Street, #103  
Sitka, Alaska 99835  
(907) 747-6688

Lowell Fair  
Regional Supervisor  
P. O. Box 240020  
Douglas, Alaska 99824-0020  
(907) 465-4250

Jim Craig  
Publications Specialist  
P.O. Box 240020  
Douglas, Alaska 99824-0020  
(907) 747-6688

For updated information on the troll fishery, call the 24-hour information line in the Douglas (907) 465-TROL (8765), Sitka (907) 747-8765, or Ketchikan (907) 225-6870.

### **SOUTHEAST ALASKA TROLL WEBSITE INFORMATION:**

<http://www.adfg.alaska.gov/index.cfm?adfg=commercialbyareasoutheast.salmon>