

2015 Southeast Alaska Purse Seine Fishery Management Plan

by

Dan Gray,

Troy Thynes,

Dave Gordon,

Andrew Piston,

Dave Harris,

and

Scott Walker

May 2015

Alaska Department of Fish and Game

Divisions of Sport Fish and Commercial Fisheries



Symbols and Abbreviations

The following symbols and abbreviations, and others approved for the Système International d'Unités (SI), are used without definition in the following reports by the Divisions of Sport Fish and of Commercial Fisheries: Fishery Manuscripts, Fishery Data Series Reports, Fishery Management Reports, and Special Publications. All others, including deviations from definitions listed below, are noted in the text at first mention, as well as in the titles or footnotes of tables, and in figure or figure captions.

Weights and measures (metric)		General		Mathematics, statistics	
centimeter	cm	Alaska Administrative Code	AAC	<i>all standard mathematical signs, symbols and abbreviations</i>	
deciliter	dL	all commonly accepted abbreviations	e.g., Mr., Mrs., AM, PM, etc.	alternate hypothesis	H_A
gram	g	all commonly accepted professional titles	e.g., Dr., Ph.D., R.N., etc.	base of natural logarithm	e
hectare	ha	at	@	catch per unit effort	CPUE
kilogram	kg	compass directions:		coefficient of variation	CV
kilometer	km	east	E	common test statistics	(F, t, χ^2 , etc.)
liter	L	north	N	confidence interval	CI
meter	m	south	S	correlation coefficient	
milliliter	mL	west	W	(multiple)	R
millimeter	mm	copyright	©	correlation coefficient	
		corporate suffixes:		(simple)	r
Weights and measures (English)		Company	Co.	covariance	cov
cubic feet per second	ft ³ /s	Corporation	Corp.	degree (angular)	°
foot	ft	Incorporated	Inc.	degrees of freedom	df
gallon	gal	Limited	Ltd.	expected value	E
inch	in	District of Columbia	D.C.	greater than	>
mile	mi	et alii (and others)	et al.	greater than or equal to	≥
nautical mile	nmi	et cetera (and so forth)	etc.	harvest per unit effort	HPUE
ounce	oz	exempli gratia		less than	<
pound	lb	(for example)	e.g.	less than or equal to	≤
quart	qt	Federal Information Code	FIC	logarithm (natural)	ln
yard	yd	id est (that is)	i.e.	logarithm (base 10)	log
		latitude or longitude	lat or long	logarithm (specify base)	log ₂ , etc.
Time and temperature		monetary symbols		minute (angular)	'
day	d	(U.S.)	\$, ¢	not significant	NS
degrees Celsius	°C	months (tables and figures): first three letters	Jan,...,Dec	null hypothesis	H_0
degrees Fahrenheit	°F	registered trademark	®	percent	%
degrees kelvin	K	trademark	™	probability	P
hour	h	United States	U.S.	probability of a type I error	
minute	min	(adjective)	U.S.	(rejection of the null hypothesis when true)	α
second	s	United States of America (noun)	USA	probability of a type II error	
		U.S.C.	United States Code	(acceptance of the null hypothesis when false)	β
Physics and chemistry		U.S. state	use two-letter abbreviations (e.g., AK, WA)	second (angular)	"
all atomic symbols				standard deviation	SD
alternating current	AC			standard error	SE
ampere	A			variance	
calorie	cal			population	Var
direct current	DC			sample	var
hertz	Hz				
horsepower	hp				
hydrogen ion activity	pH				
(negative log of)					
parts per million	ppm				
parts per thousand	ppt, ‰				
volts	V				
watts	W				

REGIONAL INFORMATION REPORT NO. 1J15-04

**2015 SOUTHEAST ALASKA PURSE SEINE FISHERY MANAGEMENT
PLAN**

by

Dan Gray and Dave Gordon

Alaska Department of Fish and Game, Division of Commercial Fisheries, Sitka

Troy Thynes

Alaska Department of Fish and Game, Division of Commercial Fisheries, Petersburg

Dave Harris

Alaska Department of Fish and Game, Division of Commercial Fisheries, Juneau

and

Scott Walker and Andrew Piston

Alaska Department of Fish and Game, Division of Commercial Fisheries, Ketchikan

Alaska Department of Fish and Game
Division of Commercial Fisheries, Publications Section
802 3rd St, Douglas, Alaska, 99824-0020

May 2015

The Regional Information Report Series was established in 1987 and was redefined in 2007 to meet the Division of Commercial Fisheries regional need for publishing and archiving information such as area management plans, budgetary information, staff comments and opinions to Alaska Board of Fisheries proposals, interim or preliminary data and grant agency reports, special meeting or minor workshop results and other regional information not generally reported elsewhere. Reports in this series may contain raw data and preliminary results. Reports in this series receive varying degrees of regional, biometric and editorial review; information in this series may be subsequently finalized and published in a different department reporting series or in the formal literature. Please contact the author or the Division of Commercial Fisheries if in doubt of the level of review or preliminary nature of the data reported. Regional Information Reports are available through the Alaska State Library and on the Internet at: <http://www.adfg.alaska.gov/sf/publications/>.

Dan Gray and Dave Gordon

*Alaska Department of Fish and Game, Division of Commercial Fisheries
304 Lake Street, Room 103, Sitka, AK 99835-7563 USA*

Troy Thynes,

*Alaska Department of Fish and Game, Division of Commercial Fisheries
16 Sing Lee Alley, Petersburg, AK 99833-0667 USA*

Dave Harris

*Alaska Department of Fish and Game, Division of Commercial Fisheries
1008 F Street, Juneau, AK 99801 USA*

and

Scott Walker and Andrew Piston

*Alaska Department of Fish and Game, Division of Commercial Fisheries
2030 Sea Level Drive, Suite 205, Ketchikan, AK 99901-0024 USA*

This document should be cited as:

Gray, D., T. Thynes, D. Gordon, A. Piston, D. Harris, and S. Walker. 2015. 2015 Southeast Alaska purse seine fishery management plan. Alaska Department of Fish and Game, Division of Commercial Fisheries, Regional Information Report 1J15-04, Douglas.

The Alaska Department of Fish and Game (ADF&G) administers all programs and activities free from discrimination based on race, color, national origin, age, sex, religion, marital status, pregnancy, parenthood, or disability. The department administers all programs and activities in compliance with Title VI of the Civil Rights Act of 1964, Section 504 of the Rehabilitation Act of 1973, Title II of the Americans with Disabilities Act (ADA) of 1990, the Age Discrimination Act of 1975, and Title IX of the Education Amendments of 1972.

If you believe you have been discriminated against in any program, activity, or facility please write:

ADF&G ADA Coordinator, P.O. Box 115526, Juneau, AK 99811-5526

U.S. Fish and Wildlife Service, 4401 N. Fairfax Drive, MS 2042, Arlington, VA 22203

Office of Equal Opportunity, U.S. Department of the Interior, 1849 C Street NW MS 5230, Washington DC 20240

The department's ADA Coordinator can be reached via phone at the following numbers:

(VOICE) 907-465-6077, (Statewide Telecommunication Device for the Deaf) 1-800-478-3648,

(Juneau TDD) 907-465-3646, or (FAX) 907-465-6078

For information on alternative formats and questions on this publication, please contact:

ADF&G, Division of Sport Fish, Research and Technical Services, 333 Raspberry Rd, Anchorage AK 99518 (907) 267-2375

TABLE OF CONTENTS

	Page
LIST OF TABLES.....	iii
LIST OF FIGURES.....	iii
ABSTRACT.....	1
INTRODUCTION.....	1
2015 PINK SALMON FORECAST.....	2
GENERAL MANAGEMENT GOALS.....	4
REGIONAL MANAGEMENT PLAN.....	5
Expected Fishing Regime.....	5
Effort Levels.....	5
Daily Start Times.....	5
Regulation Markers.....	6
News Release Information.....	7
Terminal Pink Salmon Fisheries.....	7
King Salmon Harvest.....	7
King Salmon Implementation Plan.....	8
Reporting of Personal Use Harvest.....	8
Season End.....	9
SOUTHERN DISTRICTS PURSE SEINE FISHERY.....	9
2013 Pink Salmon Returns.....	9
Management Concerns.....	9
McDonald Lake Sockeye Salmon.....	9
Management Plan.....	10
District 4.....	10
Inside Fishing Areas.....	12
Kendrick Bay Spring Fishery.....	12
Traditional Fishery Openings.....	12
Districts 5, 6, and 7.....	13
Fall Chum Salmon Fisheries.....	13
Terminal Hatchery Fisheries.....	14
Terminal Area–Neets Bay [5 AAC 33.370].....	14
Neets Bay THA Calendar.....	15
Terminal Area–Anita Bay [5 AAC 33.383].....	15
Details of the Anita Bay THA rotational gear fisheries are provided in a news release issued March 25, 2015....	16
Anita Bay THA Calendar.....	16
Kendrick Bay THA–[5 AAC 33.377].....	16
NORTHERN DISTRICTS PURSE SEINE FISHERY.....	17
2013 Pink Salmon Returns.....	17
Management Concerns.....	17

Summer Chum Salmon	17
Management Plan	18
Fishing Regime Implementation	18
Inside Fishing Areas, Early Runs	18
Inside Fishing Areas—Middle and Late Runs	19
Hawk Inlet Shore Fishery	20
Outside Fishing Areas (Sections 13-A and 13-B)	21
Fall Chum Salmon Fisheries	22
Hidden Falls Terminal Hatchery Fishery	22
Deep Inlet Terminal Hatchery Fishery	24
Terminal Area—Deep Inlet [5 AAC 33.376]	24
Gunnuk Creek Hatchery Returns	25
Amalga Harbor Special Harvest Area Fishery	26
LIST OF MANAGEMENT CONTACTS	27
REFERENCES CITED	28

LIST OF TABLES

Table	Page
1. Southeast Alaska pink salmon escapement indices (in millions) by district and subregion, compared to management target ranges by district, and biological escapement goal ranges by subregion for the 2015 parent-year of 2013.	4
2. Sockeye salmon allocations for the District 4 purse seine fishery based on Nass and Skeena Rivers allocation calculations, 1999 to 2014.	11
3. Expected 2015 returns to SSRAA enhancement projects by release location.	17
4. Expected 2015 returns to Northern Southeast Alaska area enhancement projects by hatchery	26

LIST OF FIGURES

Figure	Page
1. Annual harvest of pink salmon in Southeast Alaska, 1998–2014, compared to the exponential smoothed hindcast predictions of the harvest adjusted using NOAA Auke Bay Laboratory juvenile pink salmon data.	3

ABSTRACT

The Southeast Alaska purse seine fishery is managed according to statute, regulations, emergency order authority, and in consultation with the public and industry through the Purse Seine Management Task Force process. The Alaska Department of Fish and Game issued a preseason forecast for a harvest of 58 million pink salmon for 2015. This forecast for pink salmon, together with historical escapement estimates, fishery performance data, private non-profit hatchery forecasts for chum salmon and other species, are used to establish the management plan. The management plan for the 2015 Southeast Alaska salmon purse seine fishery is described in detail, along with expected run sizes, harvest strategies, and related management issues.

Key words: purse seine, management, pink salmon, chum salmon, coho salmon, sockeye salmon, king salmon, Fishery Management Plan

INTRODUCTION

This plan describes how the Southeast Alaska salmon purse seine fishery will be managed during the 2015 season and includes expected run sizes, harvest strategies, and related management issues. The plan is based on the Alaska Department of Fish and Game (ADF&G) 2015 preseason pink salmon forecast, historical escapement data, fishery performance data, private non-profit hatchery forecasts, and input through the Purse Seine Management Task Force process. ADF&G area management biologists listed at the end of this document can provide further details regarding the implementation of the plan in their respective areas.

Regulations allow purse seine fishing in Districts 1 (Sections 1-C, 1-D, 1-E, and 1-F only), 2, 3, 4, 5, 6 (Sections 6-C and 6-D only), 7, 9, 10, 11 (Sections 11-A and 11-D only), 12, 13, and 14. Purse seine fishing is also allowed in hatchery terminal harvest areas (THA) at Neets Bay, Kendrick Bay, Anita Bay, Deep Inlet, and Hidden Falls. Although the areas specified above are designated purse seine fishing areas, specific open areas and fishing times are established inseason by emergency order.

Since statehood, 77% of the salmon harvested in Southeast Alaska commercial fisheries have been caught with purse seine gear. Pink salmon (*Oncorhynchus gorbuscha*) is the primary species targeted by the purse seine fleet, therefore most management actions are based on the abundance of pink salmon stocks. Chum salmon (*O. keta*) are targeted in or near hatchery terminal areas and the majority of the chum salmon harvest originates from hatchery production. Other species of salmon are harvested incidentally to pink and chum salmon. Over the recent 10-year period, the species composition of the purse seine harvest has included 89% pink salmon, 9% chum salmon, 1% sockeye salmon (*O. nerka*), and 1% coho salmon (*O. kisutch*). King salmon (*O. tshawytscha*) harvest percentages are insignificant compared with other species.

Tagging studies of adult pink salmon have demonstrated that the stocks in Southeast Alaska exhibit a distinct separation between the northern and southern portions of the region. For purposes of catch tabulation and management, Districts 1–8 are grouped as “Southern Southeast” and Districts 9–14 as “Northern Southeast.”

Inseason assessments of pink salmon run strength are determined primarily from spawning escapement information obtained from aerial surveys of terminal areas and streams, and from fishery performance data (catch and catch per unit effort, or CPUE). ADF&G staff use fishery performance data and associated information to make inseason evaluations of pink salmon harvests to Northern and Southern Southeast Alaska. ADF&G also charters purse seine vessels to conduct test fishing assessments of run strength in selected index areas and monitors pink salmon sex ratios in the commercial harvest to evaluate run timing.

2015 PINK SALMON FORECAST

The Southeast Alaska pink salmon harvest in 2015 is predicted to be in the *excellent* range with a point estimate of **58 million fish (80% confidence interval: 37–79 million fish)**. The categorical ranges of pink salmon harvest in Southeast Alaska were formulated from the 20th, 40th, 60th, and 80th percentiles of historical harvest over the 51-year period 1960 to 2010:

Category	Range (millions)	Percentile
Poor	Less than 11	Less than 20 th
Weak	11 to 19	20 th to 40 th
Average	19 to 29	40 th to 60 th
Strong	29 to 48	60 th to 80 th
Excellent	Greater than 48	Greater than 80 th

The 2015 forecast was produced in two steps: 1) a forecast of the trend in harvest, and 2) the forecast trend adjusted using 2014 juvenile pink salmon abundance data. Juvenile pink salmon abundance data were provided by the National Oceanographic Atmospheric Administration (NOAA) Fisheries, Alaska Fisheries Science Center, Auke Bay Laboratories (Joe Orsi, Auke Bay Laboratories, personal communication). These data were obtained from systematic surveys conducted annually in upper Chatham and Icy straits, in conjunction with NOAA's Southeast Coastal Monitoring Project, and are highly correlated with the harvest of adult pink salmon in the following year (Wertheimer et al. 2011¹). This is the 9th year that the ADF&G forecast was adjusted using these data.

The 2015 harvest forecast of 58 million pink salmon is well above the recent 10-year average harvest of 41 million pink salmon, and a harvest of that magnitude would be in the top ten harvests since 1960. The NOAA Auke Bay Lab's 2014 peak June–July juvenile pink salmon CPUE statistic from upper Chatham and Icy straits in northern Southeast Alaska ranked 5th out of the 18 years that they have collected juvenile salmon abundance information, which indicates the very large escapements in 2013 had good spawning success and that there were no major freshwater and early marine survival issues for pink salmon set to return in 2015. Pink salmon harvests associated with juvenile indices similar to the 2014 index ($\pm 20\%$) ranged from 45 to 95 million fish. Perhaps the largest potential source of uncertainty regarding the 2015 pink salmon return is the anomalously warm conditions present in the Gulf of Alaska during the summer of 2014—the effect of these unusual environmental conditions on the marine survival of pink salmon is not known.

http://www.nwfsc.noaa.gov/news/features/food_chain/index.cfm

¹ We gratefully acknowledge the assistance and advice of Joe Orsi and Alex Wertheimer (retired) and their colleagues at the NOAA Auke Bay Laboratories. However, we accept responsibility for this forecast, and we accept sole responsibility for this use of their data.

The department will manage the commercial purse seine fisheries *inseason* based on the strength of salmon runs. Aerial escapement surveys and fishery performance data will continue, as always, to be essential in making inseason management decisions.

The statewide harvest forecast, including a complete description of the Southeast Alaska pink salmon forecast, can be found online at:

<http://www.adfg.alaska.gov/FedAidPDFs/SP15-04.pdf>

The 2015 NOAA pink salmon forecast can be found online at:

http://www.afsc.noaa.gov/ABL/EMA/EMA_PSF.htm

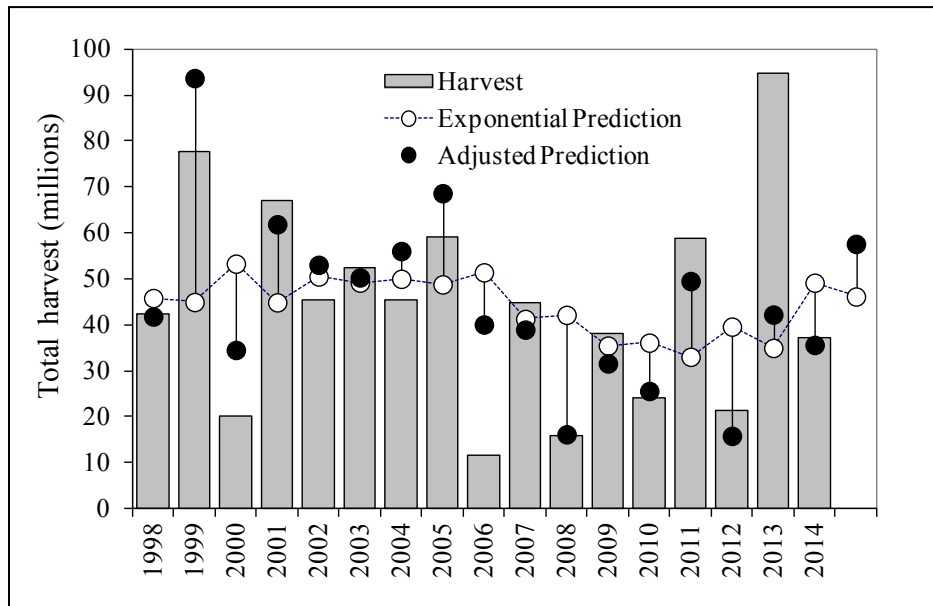


Figure 1.—Annual harvest of pink salmon in Southeast Alaska, 1998–2014, compared to the exponential smoothed hindcast predictions of the harvest adjusted using NOAA Auke Bay Laboratory juvenile pink salmon data.

Table 1.—Southeast Alaska pink salmon escapement indices (in millions) by district and subregion, compared to management target ranges by district, and biological escapement goal ranges by subregion for the 2015 parent-year of 2013.

Subregion	District	2013 Index	Lower Management Target	Upper Management Target
Southern	101	5.07	1.02	2.71
Southern	102	2.59	0.29	0.77
Southern	103	4.56	0.95	2.54
Southern	105	0.96	0.25	0.66
Southern	106	0.63	0.21	0.57
Southern	107	0.56	0.26	0.69
Southern	108	0.08	0.02	0.06
Northern Inside	109	1.70	0.63	1.50
Northern Inside	110	0.88	0.59	1.41
Northern Inside	111	0.33	0.27	0.65
Northern Inside	112	1.14	0.53	1.26
Northern Inside	Inside 113	0.76	0.32	0.76
Northern Inside	114	0.49	0.15	0.35
Northern Inside	115	0.09	0.03	0.07
Northern Outside	Outside 113	5.34	0.75	2.50

Biological Escapement Goals by Subregion	Total 2013 Index	Lower Escapement Goal	Upper Escapement Goal
Southern	14.5	3.00	8.00
Northern Inside	5.4	2.50	6.00
Northern Outside	5.3	0.75	2.50

GENERAL MANAGEMENT GOALS

The primary management goals for the 2015 Southeast Alaska purse seine fishery are as follows:

1. Obtain overall pink salmon spawning BEGs by subregion, and within subregions; obtain escapements consistent with district and stock group management targets to ensure that spawning escapements are well distributed.
2. Obtain overall adequate chum salmon spawning escapements and ensure that spawning escapements are well distributed.
3. Provide for an orderly fishery while harvesting fish in excess of spawning escapement needs.
4. Minimize, to the extent possible, the harvest of salmon destined for fishing districts where weak returns are expected.
5. Promote a harvest of good quality fish within constraints dictated by run size and timing.
6. Manage the District 4 purse seine fishery consistent with the provisions of the U.S./Canada Pacific Salmon Treaty.
7. Restrict the total purse seine harvest of Treaty king salmon (28 inches or larger) to no more than 4.3% of the all-gear Treaty king salmon catch ceiling established for the 2015

season. The 2015 preseason abundance index is not available at this time and will be announced in a news release at a later date.

8. Manage the purse seine fishery in the waters of District 12, and in Section 14-C north of the latitude of Porpoise Islands, consistent with the *Northern Southeast seine salmon fishery management plans* (5 AAC 33.366).

REGIONAL MANAGEMENT PLAN

EXPECTED FISHING REGIME

ADF&G will manage the 2015 purse seine fishery inseason based on aerial survey observations and fishery performance data. The first opening will be on June 21 and will consist of a portion of lower District 2 along the Prince of Wales Island shoreline near Kendrick Bay from McLean Point Light to Polk Island and will open for four days. The first 15-hour openings will occur on Sunday, June 21, at Hidden Falls, Tenakee Inlet, and Point Augusta. The first openings in District 10, Section 7-A, and Section 13-C will occur Sunday, June 28. Initial openings in Districts 1 and 4 can be expected on Sunday, July 5. Other areas around the region will open as described in this plan, subject to inseason information. The ADF&G pink salmon harvest forecast is 58 million fish, with an 80% confidence interval range of 37–79 million. This forecast is slightly higher than the NOAA harvest forecast of 54.5 million, with an 80% confidence interval range of 48–58 million. As always, the department will carefully monitor inseason information and will manage the fishery to ensure escapement goals are met, district and stock group escapement targets are obtained, and escapements are well distributed.

During 2013, the pink salmon parent year, the common property purse seine harvest of 88.8 million pink salmon was a record harvest for the period 1960–2013 and well above the recent 10-year average (2003–2012) of 34.5 million. Escapements in 2013 were within the BEG range in the Northern Southeast Inside Sub-region and above the BEG range in the Southern Southeast and Northern Southeast Outside Sub-regions. Management targets were met or exceeded in all 14 districts and only one stock group in the region, Freshwater Bay in District 12, fell below the management target range. The department is prepared to provide additional fishing opportunity when appropriate to harvest surplus returns. The department may expand fishing opportunity from one to two 15-hour periods per week, to 39-hour periods, to 2-days-on/2-days-off, or even to a 5-day fishing cycle as run strength and fleet distribution allows. Specific areas may warrant increased or reduced fishing times than the regional schedule depending on run strength and fleet distribution.

EFFORT LEVELS

The size of the purse seine fleet will have some impact on management decisions as the season progresses. Due to the higher forecast, effort in 2015 might be expected to increase from 261 permits that fished in 2014. In 2013, 276 permits fished. Since 2007, the total number of potential permits has decreased from 415 to 315 due to the permit buy-back program. The recent 10-year average effort in the purse seine fishery from 2005–2014 is 245 permits.

DAILY START TIMES

For the 2015 season the fishery opening and closing times will be as follows:

1. From the start of the purse seine season (June 21) through approximately August 15: 5:00 a.m. to 8:00 p.m.

2. From approximately August 16 through the end of the pink salmon season: 6:00 a.m. to 9:00 p.m.
3. From the start of the chum salmon season until the season closes: 7:00 a.m. to 7:00 p.m.

REGULATION MARKERS

Closed waters, stream markers defining closures around salmon streams, and salmon streams (that may not have markers) have been a topic at Purse Seine Task Force meetings over the years and were again discussed at the most recent meeting. Fish and Game Regulation 5 AAC 33.350 lists all closed waters in Southeast Alaska. Statewide regulation 5 AAC 39.290 was amended at the 2013 statewide meeting of the Alaska Board of Fisheries (BOF) to read:

- (a) Except as otherwise provided in this title, commercial fishing for salmon is prohibited at all times in the waters of Alaska that are**
- (1) within the streams and rivers of this state;**
 - (2) within 500 yards of the fresh waters of any salmon stream; and**
 - (3) over the beds or channels of streams and rivers of this state during all stages of the tide.**

Also in this regulation the following was adopted:

- (e) The points established for stream mouths listed in the *Catalog of Waters Important for the Spawning, Rearing, or Migration of Anadromous Fishes* under 5 AAC 95.011 do not apply to enforcement of this section or other regulations limiting the distance that commercial fishing may occur from the fresh waters of any salmon stream.**

The regulation in (e) above was added to clarify that fishing is prohibited within 500 yards of fresh water of salmon streams, and not 500 yards from the midpoint of the river mouth as listed in the *Anadromous Waters Catalog*.

The *Anadromous Waters Catalog* has maps identifying the locations of salmon streams and is available online on the department's web site at: <http://www.adfg.alaska.gov/sf/SARR/AWC/>, and copies are available for reviewing at ADF&G area offices.

An additional measure adopted at the 2013 statewide Board of Fisheries meeting was amendment of the definition of a salmon stream in 5 AAC 39.975. Definitions:

- (1) "salmon stream" means any stream used by salmon, at any stage of life, for spawning, rearing, presence, or migration.**

5 AAC 39.290(b) provides that the department may post closed areas by appropriate markers. If posted, the department shall place appropriate markers for any stream as close as practically possible to the distance or location specified by the applicable regulation or emergency order. Often these markers will be more than 500 yards from the mouth of the stream at mean lower low water (MLLW) in order to provide additional protection to fish accumulated near streams or because markers are placed where they can be seen and where they can be attached to a tree. Each stream has a different shoreline configuration. Some streams are in bays and the 500-yard markers can be connected by a straight line between the two markers because the location where the stream channel ends at MLLW is 500 yards or more from the straight line between the two

markers. Other streams are located along straight shorelines and 500 yards from the stream channel at MLLW is defined by an “arc” or half of a circle originating from the two regulation markers with the arc being at least 500 yards from any part of the stream channel at MLLW. The most important thing to remember is the shoreline around every stream, and the stream channel at low tide in every stream, is different. Fishermen must always fish outside the markers, despite their distance from the stream and must always fish 500 yards from where the stream channel ends at low tide, they should fish outside of the arc defined by the two stream markers. This will ensure that they are outside of the 500-yard stream closure.

NEWS RELEASE INFORMATION

ADF&G will announce each fishery opening by news release. Announcements, in general, will be made more than one full day in advance of the opening to provide a fair start, unless an announcement with a shorter notice is needed to prevent the loss of a fishery. In the uncommon situation where the department has announced a fishery inside normal markers and additional line changes are needed during an opening, the department can make those additional changes but has agreed to notify processors and fishermen in the vicinity of further line adjustments with less than 24 hours of notice. Line changes and time changes differing from prior announcements will be indicated in bold type to highlight those changes. News releases will be available at ADF&G offices throughout Southeast Alaska, posted on the ADF&G web site, and will be available at fish buying locations or other prominent locations throughout the region. News releases can automatically be sent to any email address by subscribing for this service at this site: <http://www.adfg.alaska.gov/index.cfm?adfg=cfnews.main>. ADF&G area office contact numbers will be listed in the footer at the end of each news release. The department is discontinuing the telephone message recording system for purse seine news releases because of the difficulty in providing lengthy and detailed information, typical of purse seine news releases, on a telephone message recording.

News releases are organized in numerical order by district, then within a district from the shortest duration opening to the longest duration opening, followed by the current king landing restrictions, information and comments, and a harvest report from the previous fishing period.

TERMINAL PINK SALMON FISHERIES

In recent years, terminal fisheries have been opened inside normal markers or stream markers at various locations throughout the region. These areas were opened to harvest buildups of pink salmon in excess of escapement needs, not at the request of processors as prior fisheries were. These fisheries were conducted at the discretion of the area management biologists in consideration of providing an orderly harvest that does not compromise escapement needs and budgetary constraints.

ADF&G will strive to open fisheries so that fish of the best possible quality can be harvested in existing traditional fisheries. If substantial buildups of pink salmon occur inside stream markers, in excess of spawning needs, openings to target these fish may occur, most likely in late August and early September. Openings of this nature will be announced via standard news releases.

KING SALMON HARVEST

ADF&G is required to manage the Southeast Alaska purse seine fishery for a maximum harvest of 4.3% of the annual all-gear king salmon catch ceiling determined under the terms of the Pacific Salmon Treaty [5 AAC 29.060 (b)(1)]. Prior to 1997, the purse seine fishery was limited

to a fixed quota of 11,400 king salmon (not including Alaska hatchery-produced fish). The purpose of the 1997 regulation was to make management of the purse seine harvest of king salmon more consistent with the abundance-based management approach. The king salmon all-gear catch ceiling is driven by the preseason abundance index that is determined by the Chinook Technical Committee.

The BOF has adopted size limits [5 AAC 33.392] and directed ADF&G to manage the purse seine fishery such that incidental mortality from catch and release is minimized. The specific provisions for management of the purse seine fishery harvest of king salmon are as follows:

1. King salmon taken in the purse seine fishery that are less than 28 inches in length (as measured from the tip of the snout to the tip of the tail) will not be counted against the king salmon harvest quota.
2. King salmon greater than 21 and less than 28 inches in length may be harvested by purse seine fishermen but not sold.
3. Purse seine fishermen may possess and sell king salmon that are less than 21 inches (approximately 5 pounds or less).

KING SALMON IMPLEMENTATION PLAN

Non-retention of 28-inch and larger king salmon has been the primary management measure for maintaining the catch limit. The department will begin the season with king salmon non-retention. Retention of king salmon will be permitted when the catch rates for other species are high and it is estimated that harvests will be within the range of this season's quota.

There may be specific terminal areas in which all king salmon may be, or must be, retained. ADF&G intends to implement full retention (5 AAC 39.265) from the beginning of the season for net fisheries in the Deep Inlet THA. Due to expectations of high enhanced king salmon harvests from the Hidden Falls THA, retention will be allowed during the initial openings of the Hidden Falls THA until mid-late July when chum harvests in the THA generally decline. Specific retention and non-retention periods will be announced in each purse seine fishery news release. Additional areas may also be announced via news release.

During periods of non-retention, purse seine fishermen are encouraged to avoid fishing in areas with high concentrations of king salmon and to quickly release those caught in a manner that minimizes mortality. To ensure small (less than 21 inches) king salmon are not counted against the quota, ADF&G needs the cooperation of the fishing industry. To accomplish this, all king salmon sold that are 28 inches or longer must be specified on fish tickets as species code 410; this is pre-printed on each fish ticket. King salmon 21 inches or less should be indicated on fish tickets as species code 411. This code will need to be handwritten on the fish ticket at the time of sale if it is not pre-printed.

REPORTING OF PERSONAL USE HARVEST

Fishermen and processors should be aware that all salmon commercially harvested but retained for personal use and not sold must be reported on fish tickets at the time other fish from an opening are delivered.

SEASON END

Concern has been expressed at past purse seine task force meetings regarding the potential loss of fishing opportunity after the department has announced the closure of the purse seine fishing season. The department agreed that the end of the season would be announced following review of catch and escapement data from the final opening. If there are areas needing additional escapement adjacent to areas with adequate escapement, the department could consider closure lines, if appropriate, as a means to provide harvest opportunities on fish returning to areas where escapements have been met. The department did caution fishermen regarding implementation of this plan that the season closure is based on several factors including providing good overall distribution of escapements, higher concentrations of females at the end of the run, incomplete escapement information at the end of the season, and consideration for harvest rates of other species.

SOUTHERN DISTRICTS PURSE SEINE FISHERY

2013 PINK SALMON RETURNS

The Southern Southeast Subregion includes all of the area from Sumner Strait south to Dixon Entrance (Districts 1–8). The escapement index value of 14.5 million in 2013 was above the escapement goal range of 3.0 to 8.0 million index fish and was the largest escapement index since statehood. Escapement indices met or exceeded management targets for all districts, and for all 18 pink salmon stock groups in this subregion.

MANAGEMENT CONCERNS

Uncertainties about fleet size, distribution, and the department's reaction to those can only be addressed inseason. ADF&G and the fishing industry will have to be flexible and be able to react quickly to changes from historical fishing patterns. Above all, meeting escapement goals will continue to be the primary objective of the department. Within that conservation mandate, the department will attempt to work with industry to provide a stable supply of fresh fish.

McDonald Lake Sockeye Salmon

McDonald Lake sockeye salmon were designated a stock of management concern by the BOF in February 2009, due to a long-term decline in escapements. In February 2012, this stock of concern status was removed due to improved adult escapements and rearing fall fry estimates. The escapement of 72,000 sockeye salmon in 2010 was the largest escapement since 2003, and was followed by escapements of 113,000 sockeye salmon in 2011 and 57,000 sockeye salmon in 2012. The escapement of 15,400 sockeye salmon in 2013 however, was the lowest estimated escapement in the time series for McDonald Lake and the escapement of 43,400 in 2014 was also below goal. The escapement goal of 55,000–120,000 fish has not been reached in the last two years and the department will closely monitor the run in 2015.

Very little inseason information will be available in 2015 to indicate the strength of the McDonald Lake sockeye salmon run. In the case of severely depressed sockeye salmon harvest rates in Districts 1, 2, 5, 6, and 7, the department may consider restrictions to the Southern Southeast purse seine, gillnet, and personal use fisheries in an effort to meet the McDonald Lake sockeye salmon escapement goal of 55,000–120,000 sockeye salmon. Specific management actions for the purse seine fishery would be similar to actions taken during the 2009 through 2011 fisheries in Districts 1, 2, 5, 6, and 7.

Management actions that *may be* instituted consist of the following:

- The Gravina Island shoreline may be closed north of the latitude of Cone Island during statistical weeks 29, 30, and 31;
- Purse seine fisheries in West Behm Canal, which have not been significant in recent years, may be limited in 2015;
- The District 6 gillnet fishery may be limited to a maximum fishing time of two days per week during statistical weeks 29, 30, and 31;
- The District 2, 5, 6, and 7 purse seine fisheries may have reduced fishing time during key weeks of the McDonald Lake sockeye salmon run.

ADF&G will continue to estimate the sockeye salmon escapement at McDonald Lake through extensive surveys of the spawning grounds from late August through late September.

MANAGEMENT PLAN

The Southern Southeast Alaska purse seine management plan consists of separate segments which include the District 4 fishery, the inside districts pink salmon fishery, the fall chum salmon fishery in Cholmondeley Sound, and the THA fisheries.

District 4

The early portion of the District 4 purse seine fishery will be managed to comply with the Pacific Salmon Treaty. The agreement calls for managing the Alaska District 4 purse seine fishery before statistical week 31 to:

1. Achieve an annual harvest share of the Nass and Skeena Rivers sockeye salmon of 2.45% of the Annual Allowable Harvest (AAH) of the Nass and Skeena Rivers sockeye salmon stocks in that year.
2. Carry forward from year to year annual deviations from the harvest share arrangement.

The AAH each year will be calculated as the combined total run of adult Nass and Skeena Rivers sockeye salmon in that year less the combined Nass and Skeena escapement target of 1.1 million fish. In the event the actual Nass and Skeena spawning escapement for the season is below the target level, the actual spawning escapement will be used in the AAH calculation.

The total run calculation includes the harvests of Nass River and Skeena Rivers sockeye salmon in the principal boundary area fisheries and the spawning escapements to the Nass and Skeena watersheds. This includes the harvest of Nass and Skeena sockeye salmon in Alaska Districts 1, 2, 3, 4, and 6 net fisheries, Canadian Areas 1, 3, 4, and 5 net fisheries, and Canadian Nass and Skeena in-river fisheries. Harvests in other boundary area fisheries may be included as jointly agreed by the Northern Boundary Technical Committee (NBTC).

Although the management intent shall be to harvest salmon at the AAH, it is recognized that overages and underages will occur and an accounting mechanism is required. The management intent for each fishery shall be to return any overages to a neutral or negative balance as soon as possible. After five years of consecutive overages, a management plan must be provided to the Northern Panel with specific management actions that will eliminate the overage. The accrual of

underages is not intended to allow either Alaska or Canada to modify its fishing behavior in any given year to harvest the accrued underage.

Over past years, the bilateral NBTC has worked to finalize the total run reconstructions for the Nass and Skeena Rivers. In January of 2015, the technical committee presented preliminary run reconstructions for 2013 and 2014 to the bilateral Northern Panel. Information in Table 2 reflects the performance of the District 4 fishery from 1999 through 2012, preliminary numbers for the 2013 and 2014 seasons, and a 2015 forecast.

The Department of Fisheries and Oceans Canada (DFO) has a preseason expectation of approximately 4,227,000 sockeye salmon to the Nass/Skeena Rivers in 2015. This is a combined forecast of 3,500,000 Skeena River sockeye and 727,000 Nass River sockeye. If the 2015 forecast is accurate, the AAH for District 4 will be approximately 76,612 Nass/Skeena sockeye salmon (Table 2).

Table 2.–Sockeye salmon allocations for the District 4 purse seine fishery based on Nass and Skeena Rivers allocation calculations, 1999 to 2014.

Year	Nass/Skeena Total Return	Nass/Skeena Escapement	Allowable Nass/ Skeena AAH	Allowable D4 Harvest (2.45%)	Total Pre-Week 31 Sockeye Harvest	Actual Nass/Skeena Harvest	Overage/ Underage Per Year	Cumulative Overage/ Underage
1999	1,771,048	936,705	834,343	20,441	7,664	3,232	-17,209	-17,209
2000	5,318,228	1,100,000	4,218,228	103,347	48,969	29,221	-74,126	-91,335
2001	4,965,291	1,100,000	3,865,291	94,700	203,090	167,854	73,154	-18,180
2002	2,776,502	1,051,333	1,725,169	42,267	26,554	18,627	-23,640	-41,820
2003	3,306,520	1,100,000	2,206,520	54,060	84,742	44,258	-9,802	-51,622
2004	2,621,000	1,100,000	1,521,000	37,265	30,758	19,233	-18,032	-69,653
2005	1,770,474	1,000,144	770,330	18,873	35,690	19,442	569	-69,084
2006	3,650,525	1,100,000	2,550,525	62,488	89,615	68,940	6,452	-62,632
2007	2,752,074	1,100,000	1,652,074	40,476	112,135	75,615	35,139	-27,493
2008	2,531,701	1,100,000	1,431,701	35,077	6,262	4,880	-30,197	-57,690
2009	1,602,959	1,053,858	549,101	13,453	15,971	10,128	-3,325	-61,015
2010	1,395,616	956,954	438,662	10,747	4,617	1,091	-9,656	-70,671
2011	2,487,985	1,100,000	1,387,985	34,006	25,280	16,599	-17,407	-88,078
2012	2,737,173	1,100,000	1,637,173	40,111	18,300	9,598	-30,513	-118,590
2013 ¹	963,011	642,461	320,550	7,853	13,102	4,227	-3,626	-122,217
2014 ¹	3,839,503	1,100,000	2,739,503	67,118	114,375	74,420	7,302	-114,915
2015 ²	4,227,000	1,100,000	3,127,000	76,612				

¹ Data for 2013 and 2014 are preliminary

² 2015 is based on forecasted returns.

In 2015, the District 4 purse seine fishery will start on Sunday, July 5 by regulation. District 4 will be managed under the Pacific Salmon Treaty annex through July 25, 2015 (statistical weeks 28, 29, and 30). It is anticipated that the initial opening on July 5 will be 15 hours in length. The duration of following openings will be based on sockeye salmon abundance and pink salmon run strength. The amount of effort in the district will also be monitored to stay within Pacific Salmon Treaty sockeye allocations. ADF&G will communicate with DFO on a weekly basis to follow the returns to the Skeena and Nass Rivers so inseason adjustments can be made to the sockeye cap. Starting on Sunday, July 26, 2015, the district will be managed on the strength of returning Southern Southeast Alaska wild salmon.

Regardless of the strength of pink salmon returns after statistical week 30, it is the department's intent to manage the district in terms of boat-days of overall effort similar to levels since the

signing of the Pacific Salmon Treaty. Weekly fishing periods in August will be decided only after the department assesses the distribution of the fleet and the run size of pink salmon. In recent years, District 4 was opened for the same amount of time as inside waters after the treaty period; however, that may not be the case in 2015.

Inside Fishing Areas

As in past years, aerial surveys of early-run pink salmon producing areas, primarily Boca de Quadra, East Behm Canal, and Ernest Sound, will begin in late June. Seining is expected to begin initially in a portion of District 2 on Sunday, June 21 to target returning enhanced chum salmon to the Kendrick Bay THA.

Kendrick Bay Spring Fishery

ADF&G will open a portion of lower District 2 outside of the Kendrick Bay THA to target Kendrick Bay summer chum salmon at a time when few wild stock chum salmon are available, and to maximize the quality of Kendrick Bay terminal chum salmon. This preseason fishery is timed to occur prior to the return of pink salmon to the area.

The department modified the open area and fishing time in 2014 due to an increase in the harvest of wild chum, sockeye, and coho salmon. This catch of other salmon species has become a concern due to recent increases in effort forcing boats to fish further offshore. For 2015, the department will continue to open a fishing area that includes those waters within two nautical miles of the shoreline. The first week (statistical week 26) will be open for 4 days. The department will monitor effort levels and wild chum, sockeye, and coho salmon harvests to minimize harvest of these species by adjusting fishing time. The department's response may include fishing 2 to 3 days each week and not fishing from Monday, July 6 through Wednesday, July 8 (statistical week 28) in District 2.

Traditional Fishery Openings

The traditional purse seine fishery will begin on Sunday, July 5 (statistical week 28). The initial fishing period will be for 15 hours and will be confined to the southeast portion of Section 1-F, the southern portion of District 2, and possibly, portions of Section 7-A (Anan).

Fishing time will likely begin with a series of 15-hour openings. If runs are strong enough to warrant additional fishing time, the fisheries will go from 15-hour to 39-hour openings on a 2-days-on/2-days-off, or a more continuous opening schedule. However, extensive openings will not occur if the pink salmon returns are weak. Areas may be opened and closed where additional fishing time is warranted or where a more conservative management strategy is needed.

In District 1, the area from Boca de Quadra to Foggy Point will be managed to reflect recent harvest patterns, effort levels, returns to Boca de Quadra river systems, and fishing time. Other areas in District 1, such as the Gravina Island shoreline, will also be managed to take into account other user groups, McDonald Lake sockeye salmon concerns, and the need to achieve evenly distributed escapement of salmon into the Back Behm and West Behm Canal systems.

In District 2, purse seining will be limited to the southern portion of the district until escapements of pink salmon to northern Clarence Strait, Ernest Sound, Cholmondeley Sound, and Kasaan Bay can be adequately assessed. Additionally, no purse seining should be expected in middle Clarence Strait, along the Ship Island and Tolstoi Bay shorelines, until run strength of

pink salmon returns to West Behm Canal, Thorne Bay, District 6, and Section 7-B are determined. Also in District 2, the fishing pattern along the Ship Island shore and near Thorne Bay will be managed to reflect historical fishing patterns to take into account other user groups and the need to achieve escapement to Thorne River, McDonald Lake (sockeye salmon), and Back Behm and West Behm Canal systems.

Returns of pink salmon to District 3 are expected to be excellent based on parent-year escapements. Portions of Section 3-A will open in mid to late July if pink salmon harvest in the early District 4 fishery indicates run strength is sufficient. By late July or early August, Sections 3-B and 3-C may also open. Due to several years of below average returns in portions of Section 3-C, initial fishing will most likely be delayed and will occur on the eastern portion of the section until the run strength can be determined.

Districts 5, 6, and 7

Pink salmon runs to Districts 5, 6, and 7 are expected to be good and early openings are anticipated. Parent-year pink salmon escapement exceeded district wide management targets in Districts 5 and 6 and was near the upper end of the management target range for District 7. Openings in these districts are no longer bound by the McDonald Lake Action Plan. However, restrictions similar to the past several years still may occur to ensure the escapement goal of sockeye salmon to McDonald Lake is met. In District 5 (Sumner Strait), purse seine openings are anticipated to begin as early as the last week in July. In District 6, openings in the Mosman and Burnett Inlets area may also begin as early as the last week of July. Openings along the Ratz Harbor and Screen Island shorelines will likely not occur until August. The 2013 escapement to Anan Creek was good, therefore the 2015 return is expected to be good and the first opening will be July 28. Subsequent openings will be based on observations of run strength. Openings in the northern portion of Section 7-B may begin the last week of July. The lower area of Section 7-B, Union Bay, will likely not open prior to August 2.

Fall Chum Salmon Fisheries

Some watersheds along the eastern shoreline of Prince of Wales Island in District 2 produce late run chum salmon that have traditionally supported fall purse seine fisheries, including a directed fishery inside of Cholmondeley Sound.

The Cholmondeley Sound fishery is supported by major runs of fall chum salmon at Disappearance and Lagoon Creeks, as well as several smaller creeks distributed throughout the sound. No formal forecasts are made for these stocks and parent-year escapements do not always provide an indication of potential run strength. The SEG range for the Cholmondeley Sound fall chum salmon is 30,000–48,000 fish based on aggregate peak aerial survey counts for Disappearance and Lagoon Creeks. Escapements were within or above the escapement goal range in four of the past five years.

ADF&G will keep Cholmondeley Sound closed to the harvest of chum salmon for all gear groups until a determination has been made that the return for 2015 will provide a harvestable surplus. Waters of Cholmondeley Sound south of 55°15.47' N. latitude (located immediately south of Chasina Island) will be closed to seining, and closed to the retention of chum salmon by trollers from August 15 until around September 9, when the first fall chum opening occurs. If pink salmon or chum salmon surpluses occur that would otherwise not be harvested, openings prior to September 9 may occur.

Chum salmon harvests by the purse seine and troll fleets in District 2 during late August pink salmon openings will be closely monitored as an early indication of run strength. Initial aerial surveys of Cholmondeley Sound chum salmon will begin around the end of August.

Approximately 10 days after closure of the directed pink salmon purse seine fishery in District 2, the department will provide a purse seine opening for chum salmon in waters of Clarence Strait outside of Cholmondeley Sound. If chum harvests in late August are estimated to be near normal levels, the department may enlarge this initial open area to include some waters inside of Cholmondeley Sound. Fishing inside of the sound may give a better indication of fall chum salmon returns. This initial opening is expected to occur on or around September 9, unless aerial observations warrant an earlier opening. The opening is expected to be 12 or 24 hours in duration. The area that will be open to the purse seine fleet is open continuously for the troll fleet under summer troll regulations.

Additional openings will likely be one or two days in length, depending upon the strength of the run and expected effort levels. Waters inside Cholmondeley Sound will be opened for both gear groups provided adequate numbers of chum salmon are observed in the South Arm and West Arm of Cholmondeley Sound. When Cholmondeley Sound is opened, Sunny Cove and waters of Cholmondeley Sound proper will be closed south of Hump Island. These closures are needed to protect chum salmon escapements in Lancaster, Dora Bay, and Kitkun systems, and closure lines may be moved further north than the closures listed in regulations.

Once it is appropriate to initiate fishing inside Cholmondeley Sound, a rotation will be instituted that will include both gear groups. When the purse seine fleet is allowed to fish for one day, the troll fleet will be given one day. If the purse seine fleet is given two days the troll fleet will be given two days. Around September 16, a second opening will occur if aerial surveys indicate that chum salmon run strength is sufficient to allow harvest. Around September 23, a third opening will occur if aerial surveys indicate that chum salmon run strength is sufficient.

The summer troll fishing season may be extended from September 21 through September 30, based on coho salmon abundance. During any troll fishery extension in District 2, trolling inside Cholmondeley Sound will be limited to the same number of days as provided for the purse seine fishery.

Terminal Hatchery Fisheries

For the 2015 season, THA purse seine fisheries will occur at Neets Bay, Anita Bay, and Kendrick Bay to harvest fish returning to Southern Southeast Regional Aquaculture Association (SSRAA) enhancement facilities. These THA fisheries will be managed jointly with SSRAA, and in accordance with existing BOF approved management plans. Details regarding the open fishing periods by gear type in each area will be announced via commercial fishery news releases. Table 3 summarizes the expected returns to each SSRAA release location.

Fishermen are requested to ensure fish caught in THAs are reported correctly on the fish tickets. This will enable accurate otolith-mark sampling and documentation of fish taken from THAs.

Terminal Area—Neets Bay [5 AAC 33.370]

ADF&G, in consultation with SSRAA, will manage Neets Bay to include those waters of Neets Bay from the easternmost point of Bug Island to the closed waters at the head of the bay. Details of the Neets Bay THA fisheries are provided in a news release issued April 16, 2015.

For 2015, the net rotational fishing schedule will be modified during statistical weeks 24 and 25 allowing additional closures to conserve Unuk River king salmon. In addition, the THA will not be expanded on the second Sunday in June and will instead open on July 1, 2015. This loss of time in the expanded portion of the THA will be for all gear groups and will coincide with the period when Unuk River king salmon transit this area as evidenced by tag data.

On August 1, the Neets Bay THA will consist of those waters east of the longitude of the easternmost tip of Bug Island to the closed waters at the head of the bay.

In 2015, SSRAA is expecting a total run of 1,180,000 summer chum, 210,000 fall chum, 340,000 coho, and 21,500 king salmon to return to Neets Bay.

Neets Bay will be open continuously to troll, purse seine, and drift gillnet from May 1 to June 10 at noon unless closed by emergency order. There will be a rotational fishery for purse seine and gillnet gear from June 12 at noon through July 2 at noon. Troll gear will be allowed continuously during this period. From July 3 to November 15 no gillnet or purse seine openings are scheduled so that cost recovery can take place. If openings can be scheduled, they will be announced by news release in September or once cost recovery has been completed.

Neets Bay THA Calendar

May 1–June 10, 2015

Open continuously to troll, purse seine, and drift gillnet unless closed by emergency order.

June 12–July 2, 2015

Rotational fishery for drift gillnet and purse seine. Troll open continuously.

July 3–November 15, 2015

No gillnet or purse seine openings are scheduled during this time so that cost recovery can take place. If openings can be scheduled they will be announced by news release in September or once cost recovery has been completed.

Terminal Area–Anita Bay [5 AAC 33.383]

The Anita Bay THA in District 7 consists of those waters of Anita Bay west of a line from Anita Point at 56°13.69' N. latitude, 132°22.50' W. longitude to 56°14.26' N. latitude, 132°23.92' W. longitude.

From June 15 through July 10, the waters within one-quarter mile of the northern shoreline of Anita Bay west of a line from 56°12.31' N. latitude, 132°26.22' W. longitude to 56°12.06' N. latitude, 132°26.22' W. longitude and east of a line from 56°11.96' N. latitude, 132°29.58' W. longitude to 56°11.73' N. latitude, 132°29.36' W. longitude will be open.

Waters south and west of the waters specified in the above description will be closed to the harvest of salmon as follows:

- (1) From June 15 through June 25, waters of the Anita Bay THA that are west of 132°26.22' W. longitude will be closed to the harvest of salmon;

- (2) From June 26 through July 1, waters of the Anita Bay THA that are west of 132°26.98' W. longitude will be closed to the harvest of salmon;
- (3) From July 2 through July 10, waters of the Anita Bay THA that are west of 132°28.00' W. longitude will be closed to the harvest of salmon.

In 2015, SSRAA is expecting total returns of 370,000 summer chum, 15,000 king, and 47,000 coho salmon to Anita Bay. It is anticipated that approximately 185,000 chum, 10,500 king, and 9,400 coho salmon will return to the terminal area and be available for harvesting in the rotational fisheries.

Details of the Anita Bay THA rotational gear fisheries are provided in a news release issued March 25, 2015.

Anita Bay THA Calendar

May 1–June 12, 2015

Beginning 12:01 a.m., Friday, May 1 through 12:00 noon Friday, June 12: open continuously to purse seine, drift gillnet, and troll unless closed by emergency order.

June 13–August 31, 2015

Rotational fisheries for drift gillnet and purse seine.

September 1–November 10, 2015

Beginning 12:01 a.m. Monday, September 1, the Anita Bay THA will be open to the harvesting of salmon concurrently by drift gillnet, purse seine, and troll gear. The Anita Bay THA will close for the season at 12:00 noon Tuesday, November 10.

Kendrick Bay THA–[5 AAC 33.377]

The Kendrick Bay THA, which includes the waters of Kendrick Bay west of 131°59.00' W. longitude, and the waters of McLean Arm west of 131°57.80' W. longitude, will be open on a continual basis beginning June 15 through September 30, 2015. For 2015, SSRAA is expecting a return of 745,000 summer chum salmon. Peak catches are expected to occur during statistical weeks 27–29.

Table 3.–Expected 2015 returns to SSRAA enhancement projects by release location.

Species/Run	Release Location	Common property Harvest	Terminal	Total Return
Coho	Herring Cove/Whitman	19,500	6,500	26,000
Coho	Nakat Inlet	43,200	4,800	48,000
Coho	Anita Bay	37,600	9,400	47,000
Coho	Neets Bay	238,00	102,000	340,000
Coho	Crystal Lake	2,500	2,500	5,000
Summer Coho	Burnett Inlet	9,200	13,800	23,000
Summer Coho	Neck Lake	45,000	45,000	90,000
King	Whitman Lake	3,600	8,400	12,000
King	Anita Bay	4,500	10,500	15,000
King	Neets Bay	6,450	15,050	21,500
King	Crystal Lake	2,400	2,400	4,800
Summer Chum	Neets Bay	318,600	861,400	1,180,000
Summer Chum	Anita Bay	185,000	185,000	370,000
Summer Chum	Kendrick Bay	521,500	223,500	745,000
Summer Chum	Nakat Inlet	110,000	110,000	220,000
Fall Chum	Nakat Inlet	26,250	48,750	75,000
Fall Chum	Neets Bay	52,500	157,500	210,000

NORTHERN DISTRICTS PURSE SEINE FISHERY

2013 PINK SALMON RETURNS

Parent-year pink salmon escapements were within the recommended BEG range for the Northern Southeast Inside Subregion. Escapement indices for all districts within the Northern Southeast Inside Subregion were within or above management targets (Table 1). For the Northern Southeast Outside Subregion, which includes Sections 13-A and 13-B, escapements were above the BEG range and all seven stock groups were within or above management target ranges.

MANAGEMENT CONCERNS

Pink salmon escapements to northern Southeast Alaska during the 2013 parent year were within or above the management target range in all districts. Only the Freshwater Bay pink salmon stock group in District 12 fell below the escapement target range. The department will use inseason assessments, including aerial observation of salmon abundance, fishing effort patterns, and assessment of catch rates to determine fishing time and area that maximizes fishing opportunities while achieving the department's primary objective of meeting escapement goals.

Summer Chum Salmon

In 2009, ADF&G adopted a lower-bound SEG of 149,000 index spawners for summer chum salmon in the Northern Southeast Inside Subregion. This goal was based on aggregate peak aerial survey counts for 63 index streams in northern Southeast Alaska inside waters. Escapements of summer chum salmon were below this escapement goal threshold from 2008 to 2011. In 2012, the escapement goal was revised downward, based on an analysis that incorporated two decades of additional data, to 119,000 index spawners (Piston and Heinel 2011). The 2011 escapement was slightly above the revised goal, primarily due to a record count of

23,000 chum salmon at the Endicott River in Lynn Canal. In 2012, chum salmon escapements improved with an index of 177,000, and the trend continued in 2013 with an escapement index of 278,000, exceeding the escapement goal by a wide margin. In 2014, chum salmon escapements were below the escapement goal. The department plans to monitor summer chum salmon closely in 2015, but at this time there are no plans for directed management actions to reduce the harvest of wild chum salmon.

MANAGEMENT PLAN

The Northern Southeast Alaska purse seine fishery management plan consists of separate segments for the outside areas (Sections 13-A and 13-B), the inside areas, the fall chum salmon fishery, the Hidden Falls and Deep Inlet Hatchery THAs, and the Amalga Harbor Special Harvest Area (SHA) fisheries.

Fishing Regime Implementation

If run strengths are sufficient to warrant additional fishing time, the fisheries will go from 15-hour and 39-hour openings to 2-days-on/2-days-off or more continuous openings.

Inside Fishing Areas, Early Runs

The 2015 seining season will begin on Sunday, June 21, with initial open periods of 15 hours to harvest hatchery summer chum and to index the strength of early pink salmon returns. During the first open period, seining will be allowed in portions of District 12 in Tenakee Inlet and the Point Augusta Index area in Chatham Strait; the opening will be in conjunction with the first opening at the Hidden Falls Terminal Harvest Area.

Escapements of summer chum salmon for the 2010 and 2011 parent years in Tenakee Inlet were below average. Although no formal forecasts are made for these stocks, some expectations can be based on parent-year escapements. Escapements in 2010 were generally weaker than the main parent year of 2011 and were 19% and 30% respectively of the previous ten-year average.

The 2013 parent-year pink salmon escapement index for Tenakee Inlet of 0.44 million fish is above the lower management target of 0.21 million and the odd-year average index count of 0.35 million fish. In 2015, purse seine opportunity in Tenakee Inlet will depend on the observed development of escapements to local streams. Portions of the Basket Bay shoreline may be opened to harvest pink salmon returns to Tenakee Inlet and Peril Strait if salmon escapements to local streams are adequate, including escapement of Kook Lake sockeye. At the 2015 Board of Fisheries meeting in Sitka, the 4 nautical miles of state marine waters around the entrance to Basket Bay that has routinely been closed to commercial seining to manage for sockeye escapement to Kook Lake and the Basket Bay subsistence fishery was added to regulatory closed waters.

The 2013 parent-year escapement index for Section 13-C was 0.76 million, at the upper range of the management target. The first opening in Section 13-C will be Sunday, June 28. Subsequent openings will be predicated on openings at Hidden Falls, fishery performance, and observations of pink salmon abundance. Purse seine openings to target chum salmon will be based on inseason assessment of abundance, though parent-year summer chum salmon escapements to Section 13-C streams were weak in 2010 and 2011.

The parent-year escapement index for District 10 was 0.88 million pink salmon, within the management target range of 0.59–1.45 million fish and was uniformly very good throughout the

district. The mainland portion of District 10 is scheduled to open on Sunday, June 28. The parent-year escapement index for Seymour Canal (Section 11-D) of 0.22 million pink salmon is within the management goal range of 0.16 to 0.40 million, and 96% of average. Openings in lower Seymour Canal may occur depending on the development of escapements to local streams.

Commercial seining directed on early-run pink salmon returns will be based upon aerial survey and fishery performance assessments of run strength. Aerial surveys to evaluate run strength will begin in late June for the northern inside fishing districts. To provide an additional assessment of incoming run strength of early-run pink salmon, the department will open a one-mile area along the Point Augusta shoreline in District 12 in conjunction with other weekly openings. Test fishing will be conducted at Point Gardner and Kingsmill Point to assess the strength and timing of the pink salmon returns entering Frederick Sound. The Point Gardner test fishery will start on or about June 25 and the Kingsmill Point test fishery will start on or about July 2. Both test fisheries are scheduled to occur weekly through the month of July. Test fishing will also occur along the Hawk Inlet Shoreline beginning on or about June 26 to assess the strength of pink salmon returns entering the northern inside waters of Districts 11 and 15. Incidental harvest of pink salmon at the Hidden Falls Hatchery terminal fishery during the first three weeks of the season will also be monitored as an indicator of pink salmon run strength.

In District 12, based on a well-defined evaluation of run strength and timing, the Hawk Inlet shoreline fishery may be opened in July to provide access to harvestable surpluses of northbound pink salmon stocks that would otherwise not be harvested. This fishery is managed according to the *Northern Southeast seine salmon fishery management plans* (5 AAC 33.366) and is described in detail in a subsequent section of this plan.

Inside Fishing Areas—Middle and Late Runs

Middle-run pink salmon should begin entering the inside waters of the northern districts during July. Seining in District 12 along the west Admiralty Island shoreline typically expands in late July, depending on the observed run strength of pink salmon stocks in Districts 10 and 11, and continues as long as Chatham Strait and Fredrick Sound escapements develop satisfactorily. Southern boundaries for the fishery are typically extended into statistical area 112-17, from Point Hepburn to Fishery Point and then to Parker Point, in either the last week of July or in early August. At the 2015 Board of Fisheries meeting in Sitka, the *Northern Southeast seine salmon fishery management plans* (5 AAC 33.366) was amended regarding openings along the west Admiralty shoreline: the portion of the Admiralty shoreline between Point Hepburn and Fishery Point may not open before July 17; and the portion of shoreline between Fishery Point and Parker Point may not open before July 21. In addition, the west Admiralty shoreline from Parker Point to Point Samuel that has been routinely closed to purse seining in order to protect Kanalku Bay sockeye, an important subsistence salmon resource, was included in regulatory closed waters. Parent-year pink salmon escapements were below management targets for the Freshwater Bay stock group on the northern Chatham Strait shoreline of Chichagof Island. Openings along this shoreline will depend on developing returns of local stocks as well as Peril Strait and Tenakee Inlet stocks. Openings may occur in this area in mid to late July depending on the observed run strength.

Seining is expected to begin in Section 9-A near Red Bluff Bay in late-July and in Section 9-A south of Patterson Point in mid-August. Parent-year escapements of pink salmon to Red Bluff Bay were at the upper management target range and openings can be expected. July openings

will include only the shoreline north of Red Bluff Bay in order to provide for escapement needs as well as subsistence uses at Falls Lake. Openings to the south of Red Bluff Bay may occur beginning in early August, depending upon pink salmon abundance. If pink salmon escapements into Red Bluff Bay are sufficient, openings inside of the bay may occur to harvest pink salmon surplus to escapements. In Section 9-A south of Patterson Point, the parent-year pink salmon escapement index was above the upper management target range. Openings may occur beginning in mid-August, depending upon inseason observations of pink salmon abundance. Openings in Section 9-A south of Patterson Point will include only those waters north of Armstrong Point.

The 2015 pink salmon return to Section 9-B is expected to be very good. The 2013 harvest was a record harvest and the parent-year escapements of pink salmon were excellent throughout the area. Openings in Section 9-B could start in the last week of July.

Pink salmon escapements in District 14 were above the management target range in 2013. As a result, openings to harvest local stocks at Idaho Inlet and Port Althorp are expected to occur in late July or early August. To try to attract effort to these remote areas, openings in these locations may be announced out of cycle, before or after regionwide openings. The decision when these remote areas will be open will be based on inseason information. The Whitestone shoreline area in District 14 may be open in late July or early August with opening times and areas dependent upon observed strengths of local pink salmon stocks. ADF&G will also monitor pink salmon escapements in streams adjacent to Porpoise Islands along Homeshore and will consider purse seine openings in this area if there are harvestable pink salmon surplus to escapement needs.

Openings in District 12 along the Catherine Island shoreline and in portions of Kelp Bay may occur beginning from mid-July to early August to harvest surplus pink or chum salmon returning to Kelp Bay streams or to harvest surplus chum salmon returning to Hidden Falls if wild chum and pink salmon escapements are being met. Parent year escapement index of pink salmon to Kelp Bay streams was .204 million, well above the .140 million upper management target range. Openings to harvest surplus pink salmon will be based on inseason assessment of run strength. Odd-year pink salmon returns to Kelp Bay systems have been relatively early in recent odd-years, overlapping summer chum salmon returns. Chum salmon abundance will also be considered in determining appropriate time and area. Parent-year chum salmon escapements to Kelp Bay streams were below average.

Hawk Inlet Shore Fishery

The Admiralty Island shoreline between Funter Bay and Point Marsden in Chatham Strait is known as the Hawk Inlet shoreline. Purse seine openings may occur in this area to harvest pink salmon stocks migrating northward to Taku River, Lynn Canal, and Stephens Passage. During July, the department will manage the Hawk Inlet Shore fishery in accordance with the *Northern Southeast seine fishery salmon management plans* (5 AAC 33.366). This plan stipulates that any portion of the area north of Point Marsden may be opened when a harvestable surplus of pink salmon is observed. Openings must also consider the conservation of all salmon species, and the area must be closed in July after 15,000 wild sockeye salmon have been harvested. All wild sockeye salmon harvested by any purse seine boat the department identifies as fishing north of Point Marsden in District 12 during any July fishing period when other nearby areas (Point Marsden to Point Hepburn, Whitestone Shore, or the Point Augusta Test Fishery) are open concurrently, will be counted against the 15,000 wild sockeye salmon limit for the Hawk Inlet

fishery. During openings, the department will utilize fishery overflights, on-the-grounds sampling, interviews, and fish tickets to estimate the sockeye salmon harvest north of Point Marsden. Otolith analysis will be utilized to determine the enhanced sockeye salmon component in the harvest. At the 2015 Board of Fisheries meeting, the *Northern Southeast seine salmon fishery management plans* (5 AAC 33.366) was amended to include wild sockeye salmon harvested in common property fisheries in the Amalga Harbor SHA, in the 15,000 wild sockeye salmon limit for the Hawk Inlet fishery. Up to 2,000 wild sockeye salmon harvested in the Amalga Harbor SHA fisheries will be included in the 15,000 wild fish July harvest limit only if the entire common property harvest area is opened. This regulation will sunset after the 2017 season.

During August, openings along the Hawk Inlet shore may extend northward to the latitude of Hanus Reef Light or Point Couverden, if north-migrating pink salmon stocks are strong. If north-migrating salmon returns are poor, and south-migrating returns are strong, seining will be allowed only south of Point Marsden.

Openings along the Hawk Inlet shore north of Point Marsden will be based on the observed run strength of north-migrating stocks of pink salmon. The assessment methods used by the department to determine if run strengths are adequate and a harvestable surplus of pink salmon is available for harvest include:

1. Parent-year escapement of pink salmon stocks for Lynn Canal, Stephens Passage, and Taku River: Lynn Canal and Stephens Passage escapements were within or above the management target ranges. The three stocks in this area, Upper Lynn Canal, Lower Lynn Canal, and Stephens Passage were all between 40% and 46% of the previous odd-year averages. The 2013 Taku River fish wheel pink salmon catch was 33% of the odd-year average.
2. Inseason test fishing at designated locations along the Admiralty Island shoreline north of Point Marsden.
3. Inseason aerial assessments of pink salmon abundance along the Admiralty Island Shoreline north of Point Marsden.
4. 2015 pink salmon catches in the department's Taku River fish wheels.
5. 2015 pink salmon marine sport fish catch rates in the Juneau area (lower Lynn Canal and upper Stephens Passage).
6. 2015 fishery performance of District 11 and District 15 drift gillnet fisheries.

Outside Fishing Areas (Sections 13-A and 13-B)

Management of Sections 13-A and 13-B, along the outer coasts of Baranof and Chichagof Islands, is distinct from the management of the northern inside areas. Salmon returning to these areas enter directly from the ocean and do not pass through major inside migration corridors. In Section 13-A, parent-year pink salmon escapement indices were above management target ranges for the Lisianski Strait, Portlock Harbor, and Slocum Arm stock groups, and within the management target range for the Salisbury Sound stock group. Openings can be expected to begin around the third week in July depending upon observed pink salmon abundance. In Section 13-B, parent-year pink salmon escapement indices for Sitka Sound, Whale Bay, and West Crawfish Inlet were well above their management target ranges. Purse seine fisheries can be

expected in all of these areas depending on inseason observations. Purse seine openings could begin as early as mid-July.

Extended or continuous fishing opportunities may be provided on specific stock groups in Sections 13-A and 13-B if run size and fleet distribution allow for it. Consecutive 15-hour openings will also be considered as a management option to 39-hour or continuous openings at intermediate run sizes in order to ensure escapement needs will be met.

Summer chum salmon returns will be monitored to determine run strengths beginning in early July. If harvestable surpluses can be identified, purse seiners may expect portions of Sections 13-A and 13-B to be open by mid-July. Openings are possible in Whale Bay, West Crawfish Inlet, Slocum Arm, and Portlock Harbor.

Short purse seine openings to harvest sockeye salmon along the outer coast of Baranof Island may occur in early July to target fish returning to Necker Bay, and in early August to target returns to Redfish Bay. Openings will be dependent on inseason observations of run strength and a cautious approach will be used to ensure that escapement needs and subsistence fishery needs are met. Targeted sockeye salmon openings are also a possibility at Redoubt Bay beginning around mid-July provided that the inseason forecast, based on historic run timing and inseason enumeration of sockeye salmon through a weir operated by the United States Forest Service, indicates that an escapement greater than 40,000 will occur.

Fall Chum Salmon Fisheries

Portions of Northern Southeast Alaska support returns of fall-run chum salmon that are harvested by purse seine gear. Fishing in Security Bay and Port Camden typically occurs the first several weeks in September. However, openings targeting fall chum salmon may be limited due to expected extended pink salmon fishing in Chatham Strait and will be based on observed run strength. Fishing opportunities in Excursion Inlet may occur in late August or early September dependent on run strength. Parent-year escapements to Excursion River were within the SEG range of 4,000 to 18,000 spawners in 2010 and below the range in 2011. Escapements in 2010 were 131% of average and the primary brood year of 2011 was 42% of the previous 10-year average. Southwest Admiralty streams do not have a good time series of survey data relating to fall chum salmon escapement. Therefore, ADF&G may provide some short openings in this area to test the run strength and will monitor fall chum salmon escapements to these systems opportunistically. Targeted purse seine fisheries will occur if harvestable surpluses are identified. In Section 13-B, targeted fall chum salmon openings may occur in Nakwasina Sound and Katlian Bay however, opportunities are most often concurrent with pink salmon fisheries in Sitka Sound. Fall chum salmon fisheries will be managed based on observations of run strength in the bays beginning in mid-August and continuing through September.

Hidden Falls Terminal Hatchery Fishery

The Hidden Falls Hatchery, operated by the Northern Southeast Regional Aquaculture Association (NSRAA), expects a run of approximately 1,031,000 chum salmon in 2015. NSRAA needs 160,000 chum salmon for broodstock leaving 871,000 chum salmon available for common property harvests. NSRAA intends to use a tax assessment on the common property harvest of chum salmon to satisfy cost recovery needs as provided under AS 16.10.455. In 2014, the law was amended to allow NSRAA to recommend either an assessment based on the percentage of value or to assess a fixed amount on a per pound basis of chum salmon landed. For the 2015

season, the NSRAA Board has recommended to the Department of Revenue an assessment rate of ten cents (\$0.10) per pound of harvested chum salmon. The *Hidden Falls Hatchery Terminal Harvest Area Salmon Management Plan* (5 AAC 33.374(f)) stipulates that the department may, by emergency order, open a joint common property/cost recovery special assessment fishery for chum salmon as specified in AS 16.10.455 within an area defined as the waters of Section 12-A south of 57°27.00' N. latitude, north of 57°01.00' N. latitude, and west of a line from 57°27.00' N. latitude, 134°45.50' W. longitude to 57°01.00' N. latitude, 134°41.50' W. longitude, from June 15 through July 31. This means that all chum salmon will be assessed the tax that are landed from a vessel that reports on the fish ticket all or a portion of the harvest was from Subsections 112-11, 112-21, or 112-22 during the period of June 15 through July 31. Fish ticket reporting requirements will be strictly monitored and enforced to ensure compliance with the tax assessment program. NSRAA will deploy observers on the grounds to document participating vessels to further facilitate enforcement.

The first purse seine opening at Hidden Falls is scheduled for June 21. In the event that a large abundance of chum salmon develops early, the Hidden Falls THA may open prior to June 21. As usual, purse seiners are advised that openings at Hidden Falls during the 2015 season may be announced with a minimum 24-hour notice, if necessary, in order to maximize fish quality. Under the tax assessment plan, mid-week openings can be expected throughout the run unless closures are necessary to meet broodstock requirements.

The *Hidden Falls Hatchery Terminal Harvest Area Salmon Management Plan* (5 AAC 33.374) provides guidelines for allocation of hatchery produced chum and king salmon in the Hidden Falls THA. The management plan describes different management approaches through June 30 and beginning July 1. If it becomes necessary to close a purse seine fishery to chum salmon that is scheduled in this plan in June to achieve broodstock goals, then troll retention of chum salmon in the THA will be prohibited as long as at least seven days remain until July 1. Also, provided that some trollers are present, in order to allow increased troll access to king salmon, Kasnyku Bay will be closed to purse seining in June, west of a line from North Point to the westernmost tip of Round Island and north of the latitude of the westernmost tip of Round Island. Beginning July 1, areas within the THA may be closed to protect chum or king salmon broodstock and trollers may only retain chum salmon in numbers not exceeding the total number of king salmon on board.

The Hidden Falls THA boundary definition has been modified to provide for easier enforcement and compliance with the THA boundaries. Rather than the use of range markers at the northern and southern boundaries, these boundaries will be defined by points indicated by markers on the Baranof Island shoreline to offshore coordinates. A line between the two offshore coordinates will also define the outer boundary as a straight line approximately two miles offshore of Baranof Island. The new definition will describe the Hidden Falls THA as the waters of Chatham Strait, Kasnyku Bay, and Takatz Bay, within the boundaries of a line from South Point, as indicated by a marker at 57°16.28' N. latitude, 134°51.78' W. longitude to a point offshore at 57°16.28' N. latitude, 134°48.00' W. longitude, then running south to a point at 57°06.76' N. latitude, 134°43.00' W. longitude then due west to a point on the Baranof Island shoreline approximately one mile south of Takatz Bay at 57°06.76' N. latitude, 134°47.50' W. longitude. During some years, the boundary of the Hidden Falls THA has been extended north to include Kelp Bay and the Catherine Island shoreline south of the Point Lull light when wild chum salmon escapements to Kelp Bay streams have been strong and there are indications of good

pink salmon abundance in the Chatham Strait corridor. A contraction of the offshore boundary of the Hidden Falls THA to less than two miles off the Baranof Island shoreline may occur if pink salmon escapements to neighboring areas are lacking and are unlikely to meet escapement goals. Any boundary expansions or area contractions will be determined based on inseason observations of run strength.

Deep Inlet Terminal Hatchery Fishery

The terminal hatchery fishery at Deep Inlet will be managed jointly with NSRAA and according to regulatory management plans. The open purse seine and gillnet fishing times and any modifications of the terminal fishing area will be announced by ADF&G news releases prior to and during the fishing season.

Terminal Area–Deep Inlet [5 AAC 33.376]

NSRAA expects a return of 1,336,000 chum salmon to the Deep Inlet remote release site and the Medvejie Hatchery in 2015. Approximately 90,000 will be needed for broodstock fish allowing for a common property harvest of approximately 1,246,000 chum salmon by purse seine, drift gillnet, and troll gear. No cost recovery harvest is planned in 2015; chum salmon surplus to broodstock needs at Medvejie Hatchery in Bear Cove will be harvested for cost recovery. The majority of the common property harvest can be expected to occur in the Deep Inlet THA by drift gillnet and purse seine gear, but significant harvest occurs outside the THA in traditional troll and purse seine fisheries as well.

The Deep Inlet THA fishery will be managed in accordance with the *District 13: Deep Inlet Terminal Harvest Area Salmon Management Plan* (5 AAC 33.376). The plan provides for distributing the harvest of hatchery-produced salmon between the purse seine and drift gillnet fleets. The BOF, during its 2015 meeting, passed regulations requiring a time ratio for drift gillnet openings to purse seine openings of 2:1 for the 2015 – 2017 seasons; except from the third Sunday in June through statistical week 30, the time ratio for drift gillnet openings to purse seine openings is 1:1. However, if the postseason preliminary enhanced salmon harvest value data from the previous season indicates the purse seine gear group is within its enhanced salmon allocation percentage range, based on the five-year rolling average as described in 5 AAC 33.364, the time ratio for drift gillnet openings to purse seine openings is 2:1 for the entire season. The BOF also allowed trolling to occur when net fisheries are closed.

The NSRAA board has requested that the common property rotational fishery begin May 31 in order to provide for common property harvest of king salmon returning to the Medvejie Hatchery. NSRAA expects a return of 27,500 king salmon to Medvejie Hatchery this season. THA rotational gear fisheries with four days of drift gillnet and two days of purse seine per week are scheduled to begin for drift gillnet gear on Monday, June 1, and continue through Friday, June 19.

During king salmon management (June 1–20), drift gillnet fishing is scheduled on Mondays, Tuesdays, Thursdays, and Fridays, and purse seine fishing is scheduled on Sundays and Wednesdays. During the first portion of chum salmon management (June 21 thru July 25) drift gillnet fishing is scheduled on Mondays, Tuesdays, and Wednesdays, and purse seine fishing is scheduled on Sundays, Thursdays, and Fridays. During the second portion of chum management (July 26 thru October 3), drift gillnet fishing is scheduled on Mondays, Tuesdays, Thursdays, and Fridays, and purse seine fishing is scheduled on Sundays and Wednesdays.

A detailed initial schedule for common property harvest in the THA is available in a news release issued April 3, 2015. When changes are necessary the revised schedule will be issued in a subsequent news release.

The terminal harvest area during the 2015 season will be as follows:

Deep Inlet THA: Deep Inlet, Aleutkina Bay, and contiguous waters south of a line from a point west of Pirates Cove at 56°59.35' N. latitude, 135°22.63' W. longitude, to the westernmost tip of Long Island to the easternmost tip of Long Island to the westernmost tip of Emgeten Island to the westernmost tip of Error Island to the westernmost tip of Berry Island to the southernmost tip of Berry Island to the westernmost tip of the southernmost island in the Kutchuma Island group to the easternmost tip of the southernmost island in the Kutchuma Island group to the westernmost tip of an unnamed island at 57°00.30' N. latitude, 135°17.67' W. longitude, to a point on the southern side of the unnamed island at 57°00.08' N. latitude, 135°16.78' W. longitude, and then to a point on the Baranof Island Shore at 56°59.93' N. latitude, 135°16.53' W. longitude, with the following restrictions:

Sandy Cove: will be closed.

During the 2015 season, the boundaries of the Deep Inlet THA may be changed by NSRAA and ADF&G to help resolve conflicts between fishermen and local private landowners in the area if they occur. Conflicts can be avoided by reducing boat wakes in areas near private docks, by reducing excessive noise and lights prior to openings, and by anchoring well away from private residences.

In order to promote full utilization of salmon, to prevent waste of salmon, to determine harvest patterns of incidentally harvested coho and sockeye salmon, and to allow full and accurate reporting of returns, the Deep Inlet THA fishery will be managed in 2015 by emergency order under authority of 5 AAC 39.265 *Full Retention and Utilization of Salmon*. This requires that all salmon harvested in net fisheries are retained, utilized, and reported on fish tickets whether they are sold or retained for personal use.

In early September, the Deep Inlet THA boundaries may be adjusted by ADF&G to reduce harvest of wild coho salmon returning to Salmon Lake or hatchery coho salmon returning to Medvejie Hatchery needed for broodstock. THA boundary adjustments to protect coho salmon will be based on historical run timing and inseason observations of abundance. Since voluntary compliance with reporting of coho salmon in the Deep Inlet THA fishery has in the past been poor and the department needs detailed information on coho and sockeye salmon harvest patterns, personnel from ADF&G or Alaska Wildlife Troopers may board some vessels and conduct hold inspections to ensure compliance.

Gunnuk Creek Hatchery Returns

Chum salmon returns to Gunnuk Creek Hatchery at Kake and Southeast Cove on northeast Kuiu Island in Keku Strait have been generally poor in recent years. These returns occur primarily in July and are taken incidentally in purse seine fisheries in Chatham Strait and western Frederick Sound during that time period. Forecasts of hatchery fish returning to Southeast Cove and Gunnuk Creek have generally been unreliable and runs have been much lower than forecasted. No forecast is available for 2015 since the Kake Non-Profit Hatchery Association ceased operations in 2014. Also the Gunnuk Creek hatchery is no longer operating; 100% of the

hatchery produced salmon returning to Southeast Cove and Gunnuk Creek will be harvested for cost recovery. NSRAA assumed responsibilities for releasing chum salmon at Southeast Cove. The first returns of NSRAA released chum salmon will occur in 2016. Currently there are no plans for future salmon releases at Gunnuk Creek.

Amalga Harbor Special Harvest Area Fishery

In order to increase the common property share of enhanced chum production, Douglas Island Pink and Chum, Inc. (DIPAC) will be continuing with common property purse seine opportunities in the Amalga SHA in 2015. Decisions about these openings will be based on run strength of enhanced chum, progress toward DIPAC cost recovery goals, expected effort levels, and considerations for nontarget species. Openings may occur in Section 11-A, and will be limited to a portion of the Amalga Harbor SHA, Subdistrict 111-55. These openings may occur in July, will only be on Thursdays, and will be limited to 6 hours (9:00 a.m.–3:00 p.m.). If there are conservation concerns for nontarget species in nearby systems, the open area or time may be reduced. Details of the open area and times will be included in the normal purse seine news release at the appropriate time.

Table 4.—Expected 2015 returns to Northern Southeast Alaska area enhancement projects by hatchery organization and release location.

Species	Release Location	Common Property Harvest	Cost Recovery	Broodstock	Total Return
NSRAA					
Chum	Medvejie/Deep Inlet	1,246,000	0	90,000	1,336,000
Chum	Hidden Falls	871,000	0	160,000	1,031,000
King	Medvejie/Deep Inlet	16,225	7,275	4,000	27,500
King	Hidden Falls	3,400	0	2,000	5,400
Coho	Hidden Falls	74,150	102,850	10,000	187,000
Coho	Deer Lake (Mist Cove)	79,750	62,250	NA	145,000
Coho	Deep Inlet/Medvejie	21,040	NA	960	22,000
Armstrong Keta, Inc.					
Pink	Port Armstrong	569,234	604,480	120,000	1,293,714
Chum	Port Armstrong	108,242	392,964	40,000	541,206
Coho	Port Armstrong	123,325	120,325	3,000	246,650
King	Port Armstrong	902	1,504	600	3,006
Sitka Sound Science Center					
Pink	Crescent Bay	41,008	22,196	5,143	68,347
Chum	Crescent Bay	8,872	1,333	3,130	11,159
Chum	Deep Inlet	95,591	63,728	0	159,319
Coho	Crescent Bay	67	0	214	112
Gunnuk Creek Hatchery					
Chum	SE Cove	Unavailable	Unavailable	0	Unavailable
Chum	Kake	Unavailable	Unavailable	0	Unavailable
Pink	Kake	Unavailable	Unavailable	0	Unavailable
Coho	Kake	Unavailable	Unavailable	0	Unavailable
DIPAC					
Chum	Lynn Canal/Amalga	984,000	370,000	0	1,354,000
Chum	Taku/Stephens Passage	395,000	220,000	140,000	755,000

(Note: Common property harvest estimates of king and coho salmon include sport harvest).

LIST OF MANAGEMENT CONTACTS

The following ADF&G Division of Commercial Fisheries management staff may be contacted regarding this plan:

Lowell Fair Region 1 Supervisor 802 3 rd Street Douglas, AK 99824 (907) 465-1191	Dan Gray Region 1 Management Biologist 304 Lake Street, Room 103 Sitka, AK 99835 (907) 747-6688
Dave Harris and Scott Forbes Management Biologists 1008 F Street Juneau, AK 99801 (907) 465-4250	Troy Thynes and Kevin Clark Management Biologist P.O. Box 667 Petersburg, AK 99833 (907) 772-3801
Scott Walker, Justin Breese, and Bo Meredith Management Biologists 2030 Sea Level Drive, Suite 205 Ketchikan, AK 99901 (907) 225-5195	Thomas Kowalske Management Biologist Kadin Building, 215 Front Street Wrangell, AK 99929 (907) 874-3822
Dave Gordon and Eric Coonradt Management Biologists 304 Lake Street, Room 103 Sitka, AK 99835 (907) 747-6688	Jim Craig Publications and Information 802 3 rd Street Douglas, AK 99824 (907) 465-4236

The following is a list of telephone numbers that may be called during the fishing season to obtain recorded announcements concerning areas open to purse seine fishing:

Ketchikan	(907) 225-6870
Petersburg	(907) 772-3700
Sitka	(907) 747-1009
Juneau	(907) 465-8905

REFERENCES CITED

- Eggers, D. M., and S. C. Heinl. 2008. Chum salmon stock status and escapement goals in Southeast Alaska. Alaska Department of Fish and Game, Special Publication No. 08-19, Anchorage.
- Eggers, D. M., J. H. Clark, R. L. Bachman, and S. C. Heinl. 2008. Sockeye salmon stock status and escapement goals in Southeast Alaska. Alaska Department of Fish and Game, Special Publication No. 08-17, Anchorage.
- Piston, A. W., and S. C. Heinl. 2011. Chum salmon stock status and escapement goals in Southeast Alaska. Alaska Department of Fish and Game, Special Publication No.11-21, Anchorage.
- Wertheimer, A. C., J. A. Orsi, E. A. Fergusson, and M. V. Sturdevant. 2011. Forecasting pink salmon harvest in Southeast Alaska from juvenile salmon abundance and associated environmental parameters: 2010 returns and 2011 forecast (NPAFC Doc. 1343) Auke Bay Lab., Alaska Fish. Sci. Cen., Nat. Mar. Fish. Serv., NOAA, 17109 Point Lena Loop Road, Juneau, AK 99801-8626, USA, 20 p.; http://www.npafc.org/new/pub_documents.html.es