

2013–2014 Winter Troll Fishery Management Plan

by

Pattie Skannes

and

Grant Hagerman

September 2013

Alaska Department of Fish and Game

Division of Commercial Fisheries



Symbols and Abbreviations

The following symbols and abbreviations, and others approved for the Système International d'Unités (SI), are used without definition in the following reports by the Divisions of Sport Fish and of Commercial Fisheries: Fishery Manuscripts, Fishery Data Series Reports, Fishery Management Reports, and Special Publications. All others, including deviations from definitions listed below, are noted in the text at first mention, as well as in the titles or footnotes of tables, and in figure or figure captions.

Weights and measures (metric)		General		Mathematics, statistics	
centimeter	cm	Alaska Administrative Code	AAC	all standard mathematical signs, symbols and abbreviations	
deciliter	dL	all commonly accepted abbreviations	e.g., Mr., Mrs., AM, PM, etc.	alternate hypothesis	H _A
gram	g			base of natural logarithm	e
hectare	ha	all commonly accepted professional titles	e.g., Dr., Ph.D., R.N., etc.	catch per unit effort	CPUE
kilogram	kg			coefficient of variation	CV
kilometer	km			common test statistics	(F, t, χ^2 , etc.)
liter	L	at	@	confidence interval	CI
meter	m	compass directions:		correlation coefficient (multiple)	R
milliliter	mL	east	E	correlation coefficient (simple)	r
millimeter	mm	north	N	covariance	cov
		south	S	degree (angular)	°
		west	W	degrees of freedom	df
Weights and measures (English)		copyright	©	expected value	E
cubic feet per second	ft ³ /s	corporate suffixes:		greater than	>
foot	ft	Company	Co.	greater than or equal to	≥
gallon	gal	Corporation	Corp.	harvest per unit effort	HPUE
inch	in	Incorporated	Inc.	less than	<
mile	mi	Limited	Ltd.	less than or equal to	≤
nautical mile	nmi	District of Columbia	D.C.	logarithm (natural)	ln
ounce	oz	et alii (and others)	et al.	logarithm (base 10)	log
pound	lb	et cetera (and so forth)	etc.	logarithm (specify base)	log ₂ , etc.
quart	qt	exempli gratia		minute (angular)	'
yard	yd	(for example)	e.g.	not significant	NS
		Federal Information Code	FIC	null hypothesis	H ₀
Time and temperature		id est (that is)	i.e.	percent	%
day	d	latitude or longitude	lat or long	probability	P
degrees Celsius	°C	monetary symbols (U.S.)	\$, ¢	probability of a type I error (rejection of the null hypothesis when true)	α
degrees Fahrenheit	°F	months (tables and figures): first three letters	Jan.,...,Dec	probability of a type II error (acceptance of the null hypothesis when false)	β
degrees kelvin	K	registered trademark	®	second (angular)	"
hour	h	trademark	™	standard deviation	SD
minute	min	United States (adjective)	U.S.	standard error	SE
second	s	United States of America (noun)	USA	variance	
		U.S.C.	United States Code	population sample	Var var
Physics and chemistry		U.S. state	use two-letter abbreviations (e.g., AK, WA)		
all atomic symbols					
alternating current	AC				
ampere	A				
calorie	cal				
direct current	DC				
hertz	Hz				
horsepower	hp				
hydrogen ion activity (negative log of)	pH				
parts per million	ppm				
parts per thousand	ppt, ‰				
volts	V				
watts	W				

REGIONAL INFORMATION REPORT NO. 1J13-10

2013–2014 WINTER TROLL FISHERY MANAGEMENT PLAN

By
Pattie Skannes and Grant Hagerman
Alaska Department of Fish and Game, Division of Commercial Fisheries, Sitka

Alaska Department of Fish and Game
Division of Commercial Fisheries, Publications Section
802 3rd, Douglas, Alaska, 99824-0020

September 2013

The Regional Information Report Series was established in 1987 and was redefined in 2007 to meet the Division of Commercial Fisheries regional need for publishing and archiving information such as project operational plans, area management plans, budgetary information, staff comments and opinions to Board of Fisheries proposals, interim or preliminary data and grant agency reports, special meeting or minor workshop results and other regional information not generally reported elsewhere. Reports in this series may contain raw data and preliminary results. Reports in this series receive varying degrees of regional, biometric and editorial review; information in this series may be subsequently finalized and published in a different department reporting series or in the formal literature. Please contact the author or the Division of Commercial Fisheries if in doubt of the level of review or preliminary nature of the data reported. Regional Information Reports are available through the Alaska State Library and on the Internet at: <http://www.sf.adfg.ak.us/statewide/divreports/html/intersearch.cfm>.

*Pattie Skannes and Grant Hagerman
Alaska Department of Fish and Game, Division of Commercial Fisheries,
304 Lake Street, Room 103, Sitka, Alaska 99835-7563 USA*

This document should be cited as:

Skannes, P., and G. Hagerman. 2013 2013–2014 Winter troll Fishery Management Plan. Alaska Department of Fish and Game, Regional Information Report No. 1J13-10, Douglas, Alaska.

The Alaska Department of Fish and Game (ADF&G) administers all programs and activities free from discrimination based on race, color, national origin, age, sex, religion, marital status, pregnancy, parenthood, or disability. The department administers all programs and activities in compliance with Title VI of the Civil Rights Act of 1964, Section 504 of the Rehabilitation Act of 1973, Title II of the Americans with Disabilities Act (ADA) of 1990, the Age Discrimination Act of 1975, and Title IX of the Education Amendments of 1972.

If you believe you have been discriminated against in any program, activity, or facility please write:

ADF&G ADA Coordinator, P.O. Box 115526, Juneau, AK 99811-5526

U.S. Fish and Wildlife Service, 4401 N. Fairfax Drive, MS 2042, Arlington, VA 22203

Office of Equal Opportunity, U.S. Department of the Interior, 1849 C Street NW MS 5230, Washington DC 20240

The department's ADA Coordinator can be reached via phone at the following numbers:

(VOICE) 907-465-6077, (Statewide Telecommunication Device for the Deaf) 1-800-478-3648,

(Juneau TDD) 907-465-3646, or (FAX) 907-465-6078

For information on alternative formats and questions on this publication, please contact:

ADF&G, Division of Sport Fish, Research and Technical Services, 333 Raspberry Rd, Anchorage AK 99518 (907) 267-2375

TABLE OF CONTENTS

	Page
LIST OF TABLES.....	ii
LIST OF FIGURES	ii
ABSTRACT	1
INTRODUCTION.....	1
MANAGEMENT PLAN	1
2012–2013 WINTER TROLL HARVEST.....	1
REGULATION SUMMARY	1
Fishing Areas.....	2
Closed Waters.....	3
Gear, Vessel Specifications, and Registration	3
Size and Landing Requirements	4
Sport Fishing and Chartering From a Registered Troll Vessel	4
Regulations Pertaining To Commercial Troll Bycatch Of Groundfish And Halibut.....	4
FISHERY CONTACTS	7

LIST OF TABLES

Table	Page
1. Winter Troll Chinook harvest, October 11, 2012 through April 30, 2013, for Districts 101–104.	9
2. Winter Troll Chinook harvest, October 11, 2012 through April 30, 2013, for Districts 105–106.	10
3. Winter Troll Chinook harvest, October 11, 2012 through April 30, 2013, for Districts 107–109.	11
4. Winter Troll Chinook harvest, October 11, 2012 through April 30, 2013, for Districts 110–113.	12
5. Winter Troll Chinook harvest, October 11, 2012 through April 30, 2013, for Districts 114–183.	13
6. Weekly effort, harvest, average price and average weight in 2013 winter troll fishery.	14

LIST OF FIGURES

Figure	Page
1. Southeast Alaska/Yakutat winter troll fishery areas.....	15
2. Sitka area winter troll boundary line.	16
3. Yakutat Bay winter troll boundary line.	17
4. Southeast Alaska/Yakutat salmon fishing districts.....	18
5. District 8 winter troll closed waters.....	19
6. District 11 winter troll fishing area.	20
7. Southeast Alaska lingcod management areas.	21

ABSTRACT

This document summarizes the plan that the Alaska Department of Fish and Game will follow to manage the 2013–2014 Southeast Alaska winter commercial troll Chinook salmon fishery, according to Alaska Board of Fisheries regulations in the State of Alaska Administrative Code under 5 AAC 29.080.

Key words: Chinook salmon, troll, winter, commercial, management plan, Alaska

INTRODUCTION

This plan summarizes the management approach the Alaska Department of Fish and Game (ADF&G or department) will employ to manage the Southeast Alaska/Yakutat commercial salmon winter troll fishery during the 2013–2014 season, provides harvest data from the previous winter troll season, and provides information about how regulations will be applied.

Regulations pertaining to the troll fishery are available in the 2012–2015 Southeast Alaska and Yakutat Commercial Salmon Fishing Regulations pamphlet available at all Southeast Alaska ADF&G area offices.

MANAGEMENT PLAN

The winter Chinook salmon troll fishery in Southeast Alaska is managed in accordance with the Alaska Board of Fisheries (BOF) Winter Troll Management Plan [5 AAC 29.080] and the Pacific Salmon Treaty (PST). The 2013–2014 Southeast and Yakutat commercial winter troll fishery begins October 11, 2013 and will continue through April 30, 2014, or until a total of 45,000 non-Alaska hatchery-produced Chinook salmon plus the number of Alaska hatchery-produced Chinook salmon are harvested [5 AAC 29.070 (a)(1) and 5 AAC 29.080 (a)]. Non-Alaska hatchery-produced Chinook salmon (treaty fish) taken in the winter troll fishery count towards the 2014 troll fishery treaty allocation and the 2014 all-gear treaty allocation. Any treaty Chinook salmon not harvested during the winter fishery will be available for harvest in the spring and summer fisheries. The 2014 all-gear quota and troll allocation will be announced by the first week of April, 2014. The 45,000 fish cap was reached prior to April 30 during the 2002–2003 through 2006–2007 winter troll seasons, during the 2010–2011 season, and during the 2011–2012 season. Prior to 2002–2003, the cap had not been exceeded since it went into effect in 1995.

2012–2013 WINTER TROLL HARVEST

The 2012–2013 winter troll Chinook harvest was 26,612 fish, with a 15% Alaska hatchery contribution. This compares to a harvest of 47,826 fish with an Alaska hatchery contribution of 12% in 2011–2012, and an average harvest of 37,400 fish from 2006–2007 to 2010–2011. A total of 442 permits were fished in 2012–2013. This compares to 507 in 2011–2012 and an average of 444 permits fished for 2006–2007 through 2010–2011. Harvest and effort in 2012–2013 were highest in April, followed by October and March. Approximately 45% of the total winter harvest was taken during the month of April (Tables 1–7). This compares to a 2007–2008 through 2011–2012 average of 55%.

REGULATION SUMMARY

Regulations pertaining to the Southeast Alaska winter trolling season are compiled in the 2012–2015 Southeast Alaska and Yakutat Commercial Salmon Fishing Regulations pamphlet. The following list is a guide to the pertinent winter regulatory subsections. These regulations may be

modified inseason by emergency order; any such changes will be announced via standard Commercial Fisheries Division News Releases. Copies of news releases, emergency orders, and regulation books are available at all Southeast Alaska Fish and Game area offices.

FISHING AREAS

Coordinates have been established for a number of headland references of the winter boundary line. According to 5 AAC 29.020 (b), the **winter boundary line** is as follows:

For the purposes of this chapter, the “winter boundary line” for the winter season and periods established in 5 AAC 29.070 is a line across Yakutat Bay from the westernmost tip of **Point Manby** at 59°41.66' N. lat., 140°19.70' W. long., to 59°40.02' N. lat., 140°24.36' W. long. to 59°31.25' N. lat., 139°53.69' W. long. to **Ocean Cape** at 59°32.06' N. lat., 139°51.46' W. long., and a line from the southernmost tip of **Cape Spencer** (58°12.62' N. lat., 136°39.82' W. long.) to the westernmost tip of **Yakobi Rock** (58°05.15' N. lat., 136°33.79' W. long.) to the southernmost tip of **Cape Cross** (57°54.70' N. lat., 136°33.76' W. long.) to the southernmost tip of **Point Theodore** (57°50.73' N. lat., 136°27.52' W. long.) to the westernmost tip of **Cape Edward** to the westernmost tip of **Khaz Point** to the westernmost tip of **Point Slocum** to the westernmost tip of **Klokachef Island** (57°24.17' N. lat., 135°54.42' W. long.) to the westernmost tip of **Cape Georgiana** (57°19.78' N. lat., 135°51.79' W. long.) to the westernmost tip of **Point Amelia** (57°13.40' N. lat., 135°52.67' W. long.) to **Cape Edgecumbe Light** (56°59.89' N. lat., 135°51.46' W. long.) to the southernmost tip of **Point Woodhouse** (56°50.05' N. lat., 135°32.56' W. long.) to the southernmost tip of **Rogers Island** to the westernmost tip of **Aspid Cape** (56°41.18' N. lat., 135°13.72' W. long.) to the southernmost tip of **North Cape** (56°35.68' N. lat., 135°08.37' W. long.) to 56°22.77' N. lat., 134°57.00' W. long. to 56°19.50.00' N. lat., 134°54.00' W. long. to the southwesternmost tip of **Puffin Point** to the northwesternmost tip of **Bahrovoi Point** to the southernmost tip of **Cape Ommaney** (56°09.63' N. lat., 134°40.25' W. long.) to **Nation Point** (55°55.66' N. lat., 134°20.10' W. long.) to **Helm Point** (55°49.42' N. lat., 134°16.95' W. long.) to the southernmost tip of **Cape Addington** (55°26.28' N. lat., 133°49.49' W. long.) to the westernmost tip of **Cape Chirikof** (55°18.14' N. lat., 133°41.49' W. long.) to **Cape Bartolome Light** to the southernmost tip of **Cape Felix** (55°12.49' N. lat., 133°24.97' W. long.) to the westernmost tip of **Bruin Point** to the westernmost tip of **Sakie Point** to the westernmost tip of **Cape Augustine** to the westernmost tip of **Rockwell Point** to the westernmost tip of **Ritter Point** to the westernmost tip of **Point Bazan** to the westernmost tip of **Security Point** to **Point Cornwallis Light** to the southernmost tip of **Liscome Point** to the westernmost tip of **Wolk Point** to 54°39.87' N. lat., 132°43.53' W. long. to **Cape Muzon Light** to the southernmost tip of **Point Nunez** to the southernmost tip of **Cape Chacon** (54°41.37' N. lat., 132°01.08' W. long.) to the southernmost tip of **West Rock** (54°48.60' N. lat., 131°29.94' W. long.) to the southernmost tip of **Yellow Rocks** (54°47.30' N. lat., 131°14.21' W. long.) to **Tree Point Light** to **Lord Rock Light** to a point on the **International Boundary** at 130°49.00' W. long.

Figures 1–3 illustrate the waters open to trolling listed above. Trolling is also allowed within 500 yards of the terminus of any salmon stream during the winter season [5 AAC 29.150(a)(1)]. Salmon fishing districts of Southeast Alaska and Yakutat are shown in Figure 4. Winter troll closed waters are described in the following section of this plan.

CLOSED WATERS

Salmon trolling is permitted in all previously mentioned areas and at all times during the winter season, except as indicated below, according to 5 AAC 29.080 (b):

1. **District 1:** waters of Behm Canal in Section 1-D between a line from Nose Point to Snail Point and a line from Cactus Point to Point Eva are closed.
2. **District 8:** waters west of the Stikine River inside a line from Babbler Point to Hour Point, along the shore of Wrangell Island to Point Highfield to the southernmost tip of Liesnoi Island to the southernmost tip of Greys Island to the small island near the eastern entrance of Blind Slough, to the nearest point of Mitkof Island, to the prominent point of Mitkof Island nearest Coney Island, to the northernmost tip of Coney Island, to a point 500 yards north of Jap Creek on the mainland shore are closed (Figure 5).
3. **District 11:**
 - A. Section 11-A is closed except those waters west of a line from Outer Point to Point Louisa and south of a line from Salisbury Point to Point Tantallon. All of Section 11-A will close at 11:59 p.m., April 14, regardless of whether the winter troll season is open after that date. The waters of Gastineau Channel are closed.
 - B. Section 11-B is open throughout the winter season except those waters north of the latitude of Grave Point Light are open only from October 11 through March 31.
4. **District 15:** waters of Section 15-B (Berners Bay) are closed.

Except for those areas specified in this section, all remaining waters listed in the “Closed Waters” section of the regulation book are open to trolling during the winter troll season.

GEAR, VESSEL SPECIFICATIONS, AND REGISTRATION

1. Troll vessels must be registered prior to fishing for the calendar year (5 AAC 29.115).
2. Troll vessels must be identified as specified in (5 AAC 39.119) and (5 AAC 29.125).
3. For troll gear specifications and operations see (5 AAC 29.120).

During the winter fishery only, hand-operated downriggers may be used in conjunction with fishing rods as follows (5 AAC 29.120(j)):

- (1) A downrigger may not be used with a troll gurdy;
- (2) A hand troll gurdy or downrigger powered by hand or hand crank may be used in conjunction with a fishing rod, and is not considered power troll gear;
- (3) An electric, hydraulic, or power assisted downrigger is considered a power troll gurdy and may not be used in conjunction with a fishing rod;
- (4) An aggregate of **two rods** with the fishing lines extending from the rods and connected to **two downriggers or hand troll gurdies** using a quick release device designed to release the fishing rod line from the downrigger line may be used;
- (5) No more than two troll gurdies, and four rigged fishing rods capable of taking fish, may be on board a salmon hand troll vessel; additional fishing rods may be on board the vessel but may not be rigged for taking fish.

SIZE AND LANDING REQUIREMENTS

Chinook salmon caught in the winter troll fishery must be equal to or greater than 28 inches in total length and the heads of all adipose-fin clipped salmon must remain attached until the fish is sold. For further specifications see (5 AAC 29.140).

SPORT FISHING AND CHARTERING FROM A REGISTERED TROLL VESSEL

A person may sport fish from a registered commercial salmon hand troll or power troll vessel [5AAC 47.041 (a)], though **may not sport fish and commercial fish for salmon from the same vessel on the same day** [5AAC 47.041 (f)]. A person who sport fishes from a vessel licensed for commercial fishing, other than a charter vessel when paying clients are onboard, shall mark the salmon by **removing its dorsal fin** immediately upon bringing a salmon onboard [5AAC 47.041 (c)].

Sport fishing from a commercially licensed vessel while commercially-caught salmon are in possession is illegal in waters closed to commercial fishing [5AAC 47.041(d)].

A downrigger may be used in conjunction with a fishing rod when sport fishing. However, a downrigger may **not** be used in conjunction with a fishing rod to take salmon when engaged in commercial hand trolling [5AAC 29.120 (b)(2)(B)].

A **registered troll vessel may also be registered as a charter vessel**, though that vessel may not be used to troll commercially and charter on the same day [5AAC 75.995(8)]. Charter boat registration applications are available at Fish and Game offices.

A person **may not possess unpreserved sport-caught salmon** on any commercial salmon vessel while engaging in commercial salmon fishing [5AAC 47.041(g)]. The definition of “preserved fish” excludes unfrozen fish temporarily stored in coolers that contain ice or dry ice or fish that are lightly salted [5AAC 75.995(21)]. In other words, “preserved” means “frozen” and sport-caught salmon must be frozen if onboard a commercial salmon vessel which is engaged in commercial salmon fishing.

REGULATIONS PERTAINING TO COMMERCIAL TROLL BYCATCH OF GROUND FISH AND HALIBUT

For information on Southeast Alaska Groundfish regulations, refer to the 2013–2014 Statewide Commercial Groundfish Fishing Regulations booklet available at Alaska Department of Fish and Game area offices. For details on groundfish bycatch allowances in the troll fishery refer to the “Groundfish Bycatch in the 2013 Commercial Salmon Troll Fishery” news release, issued on January 2, 2013.

Lingcod Management Areas (Figure 7) open to retention of lingcod bycatch in the fall portion of the winter troll fishery include: Icy Bay Subdistrict (IBS), Central Southeast Outside (CSEO) Section, Southern Southeast Outer Coast (SSEOC) Sector, Northern Southeast Inside (NSEI) Subdistrict and Southern Southeast Internal Waters (SSEIW) Sector. Lingcod bycatch may be retained until area allocations are taken or November 30, whichever occurs first. The troll lingcod bycatch season will re-open on May 16, 2014 [5AAC 28.113(c)]. Lingcod must measure at least 27 inches from the tip of the snout to the tip of the tail, or 20.5 inches from the front of the dorsal fin to the tip of the tail [5AAC 28.173(e)]. Lingcod taken in excess of bycatch allowances shall be forfeited to the State.

In the state waters portion of the Eastern Gulf of Alaska, commercial salmon trollers operating hand or power troll gear during an open commercial salmon fishing period may legally retain and possess incidentally-taken groundfish in unlimited amounts, with the exception of the species listed below. The bycatch allowance for each species or species group reflects the percentage that may be retained and sold and is based on the round weight of salmon on board. Bycatch limits for the 2013–2014 winter troll fishery are as follows:

Lingcod:	CSEO, NSEL, and SSEIW–40%; IBS and SSEOC–30%; NSEO–0%
Demersal Shelf Rockfish (DSR):	10%
Spiny Dogfish:	35%
Sablefish:	0%
Other groundfish	No limit on incidental harvest

The retention of lingcod is prohibited in the troll fishery in the waters of Sitka Sound [5AAC 28.150(a)]. The Sitka Sound lingcod closure is defined as the waters that are enclosed on the north by lines from Kruzof Island at 57°20.50' N. lat., 135°45.17' W. long. to Chichagof Island at 57°22.05' N. lat., 135°43.00' W. long., and from Chichagof Island at 57°22.58' N. lat., 135°41.30' W. long. to Baranof Island at 57°22.28' N. lat., 135°40.95' W. long., and on the south and west by a line running from the southernmost tip of Sitka Point at 56°59.38' N. lat., 135°49.57' W. long. to Hanus Point at 56°51.92' N. lat., 135°30.50' W. long. to the green day marker in Dorothy Narrows at 56°49.28' N. lat., 135°22.75' W. long. to Baranof Island at 56°49.28' N. lat., 135°22.60' W. long.

A CFEC permit holder with lingcod on board their vessel is prohibited from fishing in an area that is closed to lingcod retention [5AAC 28.070(c)].

Lingcod harvest allocations for the troll fishery are set by area and area closures will occur as allocations are taken. In-season closures will be announced by department news release, the United States Coast Guard “Notice to Mariners” report, and the National Weather Service broadcast. For updates on lingcod area closures, call the Groundfish Hotline at (907) 747-4882 or contact the Groundfish staff in Sitka at (907) 747-6688.

All DSR in excess of 10% must be weighed and reported as bycatch overage on a department fish ticket. All proceeds from the sale of excess DSR bycatch taken in state waters shall be surrendered to the state [5 AAC 28.171 (a)]. DSR bycatch overages must be reported on fish tickets but may be retained for a person’s own use. The seven species of rockfish in the DSR assemblage are yelloweye, quillback, canary, copper, china, tiger and rosethorn rockfish.

Halibut incidentally taken during an open commercial halibut season by power and hand troll gear operated for salmon consistent with applicable state laws and regulations are legally taken and possessed [5AAC 28.133(c)]. Commercial halibut may be legally retained only by Individual Fishing Quota (IFQ) permit holders during the open season for halibut. Trollers making an IFQ halibut landing of 500 lbs. or less of IFQ weight as determined pursuant to 50 CFR 679.42(h) are exempted from the three-hour prior notice of landing (PNOL) if landed concurrently with a legal landing of salmon [50 CFR 679.5(l)(1)(iv)(A)]. Halibut taken incidentally during the troll fishery shall be reported on the troll fish ticket documenting the salmon landing. For information on regulations and landing requirements for the federal IFQ halibut fishery contact NOAA Fisheries. The IFQ season closes on November 7, 2013.

A person aboard a vessel may not fish for groundfish with dinglebar troll or mechanical jig gear if salmon are on board. A vessel fishing for groundfish with dinglebar troll gear must display the letter “D” and a vessel fishing for groundfish with mechanical jigging machines must display the letter “M” at all times when fishing with or transporting fish taken with dinglebar troll gear or mechanical jigging machines [5AAC 28.135 (a)(4)]. A person may not operate a vessel that is displaying one of these letters when the vessel is being used to fish for salmon [5AAC 28.135 (c)].

FISHERY CONTACTS

The following are Division of Commercial Fisheries contacts regarding this management plan:

Pattie Skannes
Troll Management Biologist
304 Lake Street, #103
Sitka, Alaska 99835
(907) 747-6688

Grant Hagerman
Assistant Troll Management Biologist
304 Lake Street, #103
Sitka, Alaska 99835
(907) 747-6688

Dan Gray
Regional Management Biologist
304 Lake Street, # 103
Sitka, Alaska 99835
(907) 747-6688

Scott Kelley
Regional Supervisor
P. O. Box 240020
Douglas, Alaska 99824-0020
(907) 465-4250

Troy Thynes and Kevin Clark
Management Biologists
P. O. Box 667
Petersburg, Alaska 99833
(907) 772-3801

Dave Gordon and Eric Coonradt
Management Biologists
304 Lake Street, # 103
Sitka, Alaska 99835-7653
(907) 747-6688

Tom Kowalske
Management Biologist
P.O. Box 200
Wrangell, Alaska 99829
(907) 874-3822

Dave Harris and Scott Forbes
Management Biologists
P. O. Box 240020
Douglas, Alaska 99824-0020
(907) 465-4250

Scott Walker, Justin Breese and Bo Meredith
Management Biologists
2030 Sea Level Drive, Suite, 205
Ketchikan, Alaska 99901
(907) 225-5195

Randy Bachman
Management Biologist
P.O. Box 330
Haines, Alaska 99827-0330
(907) 766-2830 or 3124

Gordon Woods
Management Technician
P. O. Box 49
Yakutat, Alaska 99689-0049
(907) 784-3255

Nicole Zeiser
Assistant Management Biologist
P. O. Box 49
Yakutat, Alaska 99689-0049
(907) 784-3255

For up-to-date troll information, call the 24-hour information line in the Douglas Office at 465-TROL (8765). In addition, the following telephone numbers may be called during the troll fishing season to obtain recorded announcements concerning areas open to trolling.

Ketchikan-(907) 225-6870

Sitka-(907) 747-8765

Petersburg-(907) 772-3700

SOUTHEAST ALASKA TROLL WEBSITE INFORMATION:

<http://www.adfg.alaska.gov/index.cfm?adfg=commercialbyareasoutheast.salmon>

TABLES AND FIGURES

Table 1.–Winter Troll Chinook harvest, October 11, 2012 through April 30, 2013, for Districts 101–104.

District	Week	Dates	Permits	Landings	Chinook	Chinook Per Landing	Chinook Per Permit	Avg Wt. (lbs)
101	41	Oct 7–13, 2012	3	3	17	6	6	10.2
101	43	Oct 21–27, 2012	3	3	42	14	14	11.3
101	46	Nov 11–17, 2012	3	4	55	14	18	10.2
101	47	Nov 18–24, 2012	4	4	55	14	14	11.9
101	48	Nov 25–Dec 1, 2012	4	5	39	8	10	11.8
101	49	Dec 2–8, 2012	3	3	24	8	8	12.4
101	50	Dec 9–15, 2012	4	4	34	9	9	12.1
101	02	Jan 6–12, 2013	3	3	15	5	5	10.7
101	03	Jan 13–19, 2013	3	4	13	3	4	11.4
101	08	Feb 17–23, 2013	3	3	11	4	4	13.0
101	09	Feb 24–Mar 2, 2013	3	3	17	6	6	11.8
101	17	Apr 21–27, 2013	3	3	6	2	2	9.5
101	18	Apr 28–30, 2013	3	3	7	2	2	13.4
101 Total			23	67	502	7	22	11.4
102	41	Oct 7–13, 2012	4	4	111	28	28	11.4
102	14	Mar 31–Apr 6, 2013	3	4	56	14	19	9.7
102 Total			13	26	443	17	34	10.8
103	43	Oct 21–27, 2012	8	11	62	6	8	12.3
103	44	Oct 28–Oct 3, 2012	7	8	47	6	7	12.6
103	45	Nov 4–10, 2012	4	5	23	5	6	13.0
103	46	Nov 11–17, 2012	5	7	41	6	8	12.9
103	47	Nov 18–24, 2012	9	9	78	9	9	11.3
103	48	Nov 25–Dec 1, 2012	10	10	74	7	7	11.6
103	49	Dec 2–8, 2012	9	10	110	11	12	11.4
103	50	Dec 9–15, 2012	6	7	59	8	10	12.9
103	51	Dec 16–22, 2012	11	12	59	5	5	11.6
103	02	Jan 6–12, 2013	3	3	43	14	14	11.0
103	03	Jan 13–19, 2013	6	6	35	6	6	12.5
103	05	Jan 27–Feb 2, 2013	4	4	49	12	12	12.2
103	07	Feb 10–16, 2013	4	4	17	4	4	11.9
103	08	Feb 17–23, 2013	4	4	47	12	12	11.8
103	09	Feb 24–Mar 2, 2013	4	4	16	4	4	12.2
103	10	Mar 3–9, 2013	7	7	50	7	7	12.1
103	11	Mar 10–16, 2013	5	5	21	4	4	11.2
103	12	Mar 17–23, 2013	5	7	33	5	7	12.3
103	13	Mar 24–30, 2013	3	5	29	6	10	10.1
103	15	Apr 7–13, 2013	6	6	21	4	4	10.3
103	16	Apr 14–20, 2013	6	8	19	2	3	11.4
103 Total			37	153	975	6	26	11.9
104	10	Mar 3–9, 2013	4	4	77	19	19	11.5
104	13	Mar 24–30, 2013	6	6	75	13	13	12.5
104	14	Mar 31–Apr 6, 2013	6	7	186	27	31	11.9
104	16	Apr 14–20, 2013	6	6	49	8	8	13.7
104	17	Apr 21–27, 2013	17	18	300	17	18	11.9
104	18	Apr 28–30, 2013	3	3	12	4	4	13.8
104 Total			27	61	970	16	36	11.9

Table 2.–Winter Troll Chinook harvest, October 11, 2012 through April 30, 2013, for Districts 105–106.

District	Week	Dates	# Permits	Landings	Chinook	Chinook Per Landing	Chinook Per Permit	Avg Wt. (lbs)
105	44	Oct 28–Oct 3, 2012	3	3	41	14	14	14.4
105	49	Dec 2–8, 2012	3	3	29	10	10	13.3
105	02	Jan 6–12, 2013	4	6	37	6	9	12.4
105	03	Jan 13–19, 2013	6	8	36	5	6	12.7
105	04	Jan 20–26, 2013	10	10	189	19	19	12.7
105	05	Jan 27–Feb 2, 2013	6	7	35	5	6	12.7
105	06	Feb 3–9, 2013	4	4	43	11	11	11.8
105	07	Feb 10–16, 2013	3	4	41	10	14	11.6
105	08	Feb 17–23, 2013	5	5	66	13	13	11.8
105	09	Feb 24–Mar 2, 2013	3	3	34	11	11	11.6
105	10	Mar 3–9, 2013	11	13	146	11	13	12.6
105	11	Mar 10–16, 2013	15	17	166	10	11	12.2
105	12	Mar 17–23, 2013	12	12	126	11	11	12.4
105	13	Mar 24–30, 2013	15	23	215	9	14	12.0
105	14	Mar 31–Apr 6, 2013	28	32	379	12	14	12.2
105	15	Apr 7–13, 2013	12	14	80	6	7	12.3
105	16	Apr 14–20, 2013	30	38	743	20	25	12.0
105	17	Apr 21–27, 2013	37	50	776	16	21	12.4
105	18	Apr 28–30, 2013	17	17	211	12	12	13.0
105 Total			72	276	3,461	13	48	12.3
106	43	Oct 21–27, 2012	5	7	15	2	3	15.2
106	44	Oct 28–Oct 3, 2012	5	5	12	2	2	15.7
106	45	Nov 4–10, 2012	5	7	10	1	2	16.2
106	46	Nov 11–17, 2012	4	5	5	1	1	13.1
106	47	Nov 18–24, 2012	3	5	13	3	4	15.6
106	48	Nov 25–Dec 1, 2012	5	6	9	2	2	12.4
106	49	Dec 2–8, 2012	3	6	10	2	3	14.2
106	51	Dec 16–22, 2012	4	6	11	2	3	17.6
106	01	Jan 1–5, 2013	4	5	8	2	2	15.3
106	02	Jan 6–12, 2013	6	12	22	2	4	14.1
106	03	Jan 13–19, 2013	7	12	22	2	3	14.5
106	04	Jan 20–26, 2013	15	24	51	2	3	16.1
106	05	Jan 27–Feb 2, 2013	8	14	21	2	3	14.8
106	06	Feb 3–9, 2013	8	12	20	2	3	14.6
106	07	Feb 10–16, 2013	4	6	8	1	2	15.0
106	08	Feb 17–23, 2013	6	10	22	2	4	16.1
106	09	Feb 24–Mar 2, 2013	6	9	15	2	3	13.7
106	10	Mar 3–9, 2013	9	13	21	2	2	16.4
106	11	Mar 10–16, 2013	8	8	17	2	2	13.4
106	12	Mar 17–23, 2013	6	12	36	3	6	12.8
106	13	Mar 24–30, 2013	6	7	57	8	10	11.5
106	15	Apr 7–13, 2013	3	4	5	1	2	11.2
106	16	Apr 14–20, 2013	5	5	10	2	2	16.7
106 Total			41	216	461	2	11	14.4

Note: Weeks and districts with less than 3 permits fished are omitted due to confidentiality considerations. Therefore, the totals may not reflect the sum of the weekly harvests shown.

Table 3.–Winter Troll Chinook harvest, October 11, 2012 through April 30, 2013, for Districts 107–109.

District	Week	Dates	# Permits	Landings	Chinook	Chinook Per Landing	Chinook Per Permit	Avg Wt. (lbs)
107	41	Oct 7–13, 2012	3	3	13	4	4	14.1
107	42	Oct 14–20, 2012	3	4	47	12	16	13.0
107	43	Oct 21–27, 2012	3	3	11	4	4	12.5
107 Total			13	23	130	6	10	13.4
108	41	Oct 7–13, 2012	7	7	20	3	3	10.9
108	42	Oct 14–20, 2012	4	5	12	2	3	11.8
108	43	Oct 21–27, 2012	10	13	94	7	9	11.2
108	44	Oct 28–Oct 3, 2012	9	10	36	4	4	12.6
108	45	Nov 4–10, 2012	8	9	48	5	6	12.1
108	46	Nov 11–17, 2012	8	8	39	5	5	13.1
108	47	Nov 18–24, 2012	3	4	12	3	4	11.2
108	48	Nov 25–Dec 1, 2012	6	6	34	6	6	11.9
108	49	Dec 2–8, 2012	3	4	14	4	5	14.2
108	50	Dec 9–15, 2012	4	4	19	5	5	12.9
108	51	Dec 16–22, 2012	4	4	23	6	6	13.5
108	01	Jan 1–5, 2013	3	5	11	2	4	15.6
108	02	Jan 6–12, 2013	3	3	17	6	6	10.9
108	03	Jan 13–19, 2013	6	10	23	2	4	15.8
108	04	Jan 20–26, 2013	4	5	41	8	10	11.5
108	05	Jan 27–Feb 2, 2013	5	5	12	2	2	13.4
108	06	Feb 3–9, 2013	5	5	16	3	3	13.6
108	07	Feb 10–16, 2013	4	4	12	3	3	14.6
108	08	Feb 17–23, 2013	6	7	22	3	4	12.6
108	09	Feb 24–Mar 2, 2013	6	6	18	3	3	12.5
108	10	Mar 3–9, 2013	5	8	16	2	3	13.6
108	11	Mar 10–16, 2013	3	3	5	2	2	14.0
108	13	Mar 24–30, 2013	5	6	21	4	4	13.7
108	14	Mar 31–Apr 6, 2013	8	9	28	3	4	11.6
108	15	Apr 7–13, 2013	3	3	8	3	3	14.0
108	16	Apr 14–20, 2013	4	6	27	5	7	11.3
108	17	Apr 21–27, 2013	7	9	16	2	2	12.5
108	18	Apr 28–30, 2013	6	6	30	5	5	13.7
108 Total			43	180	726	4	17	12.4
109	43	Oct 21–27, 2012	4	6	9	2	2	13.0
109	44	Oct 28–Oct 3, 2012	4	4	16	4	4	13.6
109	48	Nov 25–Dec 1, 2012	3	3	6	2	2	20.9
109	07	Feb 10–16, 2013	3	3	62	21	21	11.7
109	10	Mar 3–9, 2013	6	6	59	10	10	12.0
109	12	Mar 17–23, 2013	8	9	54	6	7	13.2
109	13	Mar 24–30, 2013	3	3	64	21	21	10.6
109	14	Mar 31–Apr 6, 2013	18	21	359	17	20	11.9
109	15	Apr 7–13, 2013	11	11	165	15	15	12.4
109	16	Apr 14–20, 2013	21	26	375	14	18	12.7
109	17	Apr 21–27, 2013	24	27	580	21	24	11.8
109	18	Apr 28–30, 2013	12	12	330	28	28	11.8
109 Total			57	149	2,235	15	39	12.1

Note: Weeks and districts with less than 3 permits fished are omitted due to confidentiality considerations. Therefore, the totals may not reflect the sum of the weekly harvests shown.

Table 4.–Winter Troll Chinook harvest, October 11, 2012 through April 30, 2013, for Districts 110–113.

District	Week	Dates	# Permits	Landings	Chinook	Chinook Per Landing	Chinook Per Permit	Avg Wt. (lbs)
110	41	Oct 7–13, 2012	11	11	52	5	5	11.9
110	42	Oct 14–20, 2012	6	8	102	13	17	12.4
110	43	Oct 21–27, 2012	7	7	85	12	12	12.5
110	46	Nov 11–17, 2012	4	4	13	3	3	13.8
110	02	Jan 6–12, 2013	3	3	16	5	5	12.0
110	10	Mar 3–9, 2013	4	4	37	9	9	12.1
110	13	Mar 24–30, 2013	4	6	26	4	7	16.1
110	14	Mar 31–Apr 6, 2013	7	7	20	3	3	12.2
110	15	Apr 7–13, 2013	3	5	31	6	10	13.2
110	16	Apr 14–20, 2013	7	7	23	3	3	14.7
110	17	Apr 21–27, 2013	6	6	12	2	2	14.4
110	18	Apr 28–30, 2013	4	4	13	3	3	15.4
110 Total			34	86	529	6	16	12.7
111 Total			5	7	15	2	3	11.6
112	42	Oct 14–20, 2012	5	5	55	11	11	10.7
112 Total			10	16	132	8	13	11.5
113	41	Oct 7–13, 2012	60	61	589	10	10	11.9
113	42	Oct 14–20, 2012	47	61	579	9	12	11.9
113	43	Oct 21–27, 2012	41	48	534	11	13	12.0
113	44	Oct 28–Oct 3, 2012	30	42	308	7	10	12.2
113	45	Nov 4–10, 2012	48	63	658	10	14	12.1
113	46	Nov 11–17, 2012	33	43	266	6	8	12.4
113	47	Nov 18–24, 2012	16	19	124	7	8	12.8
113	48	Nov 25–Dec 1, 2012	20	23	128	6	6	13.0
113	49	Dec 2–8, 2012	7	8	22	3	3	13.7
113	50	Dec 9–15, 2012	3	3	10	3	3	13.2
113	51	Dec 16–22, 2012	4	4	9	2	2	14.4
113	01	Jan 1–5, 2013	4	5	15	3	4	12.7
113	02	Jan 6–12, 2013	8	9	32	4	4	14.3
113	03	Jan 13–19, 2013	10	16	63	4	6	14.3
113	04	Jan 20–26, 2013	10	12	58	5	6	13.6
113	05	Jan 27–Feb 2, 2013	18	26	124	5	7	13.6
113	06	Feb 3–9, 2013	25	29	159	5	6	13.2
113	07	Feb 10–16, 2013	15	16	97	6	6	14.1
113	08	Feb 17–23, 2013	27	33	248	8	9	13.9
113	09	Feb 24–Mar 2, 2013	25	28	91	3	4	13.9
113	10	Mar 3–9, 2013	58	81	431	5	7	12.7
113	11	Mar 10–16, 2013	42	47	326	7	8	13.2
113	12	Mar 17–23, 2013	45	66	323	5	7	13.3
113	13	Mar 24–30, 2013	45	52	388	7	9	12.1
113	14	Mar 31–Apr 6, 2013	74	87	720	8	10	12.9
113	15	Apr 7–13, 2013	39	43	429	10	11	12.2
113	16	Apr 14–20, 2013	113	160	1,321	8	12	12.3
113	17	Apr 21–27, 2013	116	172	1,983	12	17	12.4
113	18	Apr 28–30, 2013	87	95	1,108	12	13	12.4
113 Total			199	1,354	11,150	8	56	12.5

Note: Weeks and districts with less than 3 permits fished are omitted due to confidentiality considerations. Therefore, the totals may not reflect the sum of the weekly harvests shown.

Table 5.–Winter Troll Chinook harvest, October 11, 2012 through April 30, 2013, for Districts 114–183.

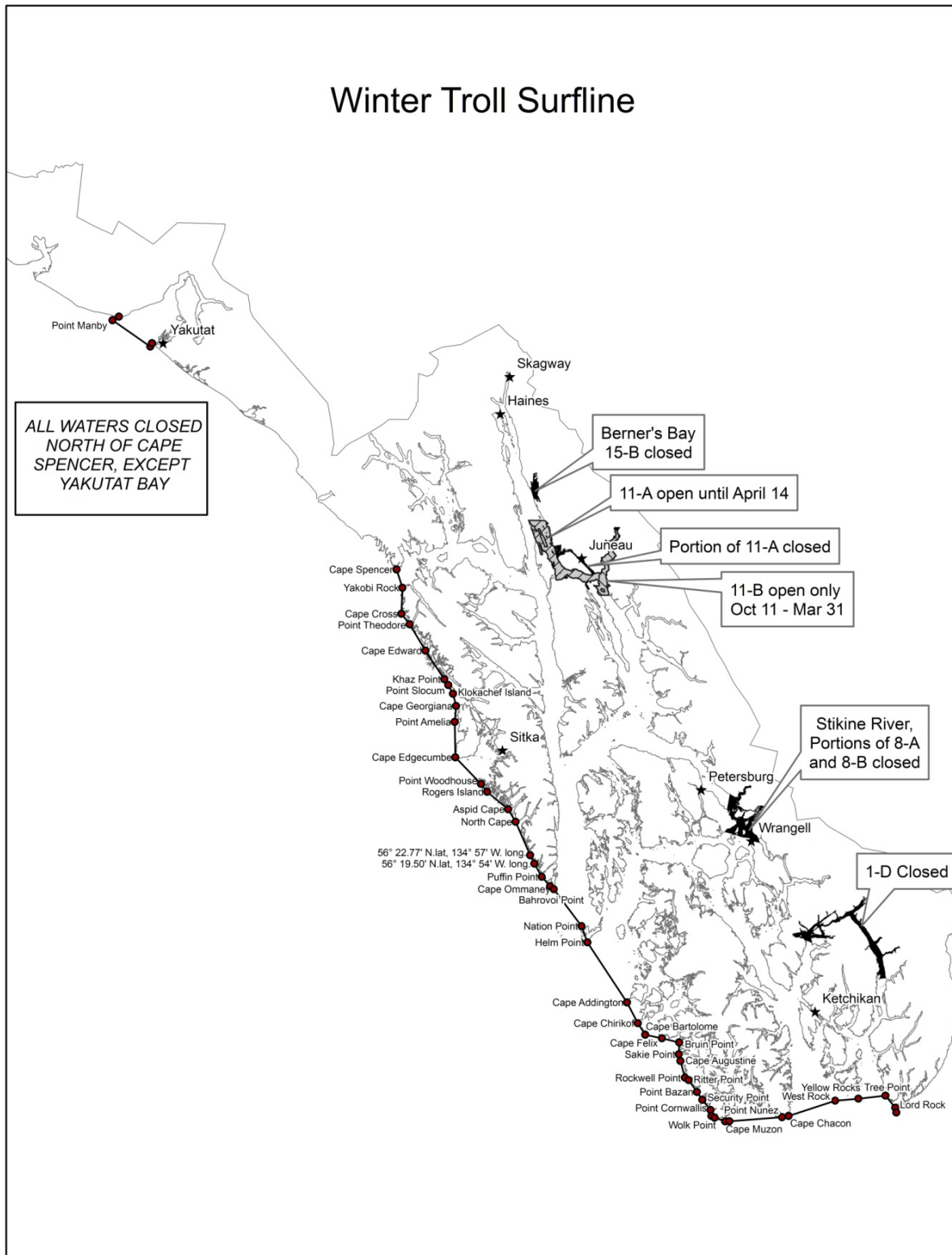
District	Week	Dates	# Permits	Landings	Chinook	Chinook Per Landing	Chinook Per Permit	Avg Wt. (lbs)
114	15	Apr 7–13, 2013	5	5	22	4	4	13.4
114	16	Apr 14–20, 2013	6	7	112	16	19	12.4
114	17	Apr 21–27, 2013	9	14	136	10	15	13.0
114 Total			17	48	360	8	21	13.2
183	41	Oct 7–13, 2012	23	32	402	13	17	13.4
183	42	Oct 14–20, 2012	22	53	653	12	30	14.2
183	43	Oct 21–27, 2012	25	47	316	7	13	13.7
183	44	Oct 28–Oct 3, 2012	21	32	260	8	12	13.5
183	45	Nov 4–10, 2012	18	37	174	5	10	12.8
183	46	Nov 11–17, 2012	13	30	240	8	18	14.1
183	47	Nov 18–24, 2012	13	19	56	3	4	13.1
183	48	Nov 25–Dec 1, 2012	6	12	61	5	10	14.0
183	49	Dec 2–8, 2012	10	19	78	4	8	12.7
183	50	Dec 9–15, 2012	6	14	61	4	10	13.2
183	51	Dec 16–22, 2012	7	8	34	4	5	13.3
183	52	Dec 23–29, 2012	6	11	21	2	4	14.4
183	53	Dec 30–31, 2012	4	4	11	3	3	14.8
183	01	Jan 1–5, 2013	6	7	14	2	2	14.0
183	03	Jan 13–19, 2013	4	4	8	2	2	15.9
183	04	Jan 20–26, 2013	5	6	13	2	3	15.1
183	05	Jan 27–Feb 2, 2013	3	3	9	3	3	13.1
183	06	Feb 3–9, 2013	5	10	40	4	8	13.9
183	07	Feb 10–16, 2013	7	13	29	2	4	13.2
183	08	Feb 17–23, 2013	3	4	19	5	6	13.5
183	09	Feb 24–Mar 2, 2013	8	16	38	2	5	14.9
183	10	Mar 3–9, 2013	20	45	247	5	12	13.9
183	11	Mar 10–16, 2013	16	38	332	9	21	13.6
183	12	Mar 17–23, 2013	16	34	285	8	18	13.2
183	13	Mar 24–30, 2013	17	26	122	5	7	14.2
183	14	Mar 31–Apr 6, 2013	19	34	126	4	7	14.3
183	15	Apr 7–13, 2013	9	14	90	6	10	13.8
183	16	Apr 14–20, 2013	17	26	142	5	8	12.4
183	17	Apr 21–27, 2013	24	51	321	6	13	13.5
183	18	Apr 28–30, 2013	22	32	313	10	14	12.7
183 Total			45	683	4,523	7	101	13.6

Note: Weeks and districts with less than 3 permits fished are omitted due to confidentiality considerations. Therefore, the totals may not reflect the sum of the weekly harvests shown.

Table 6.—Weekly effort, harvest, average price and average weight in 2013 winter troll fishery.

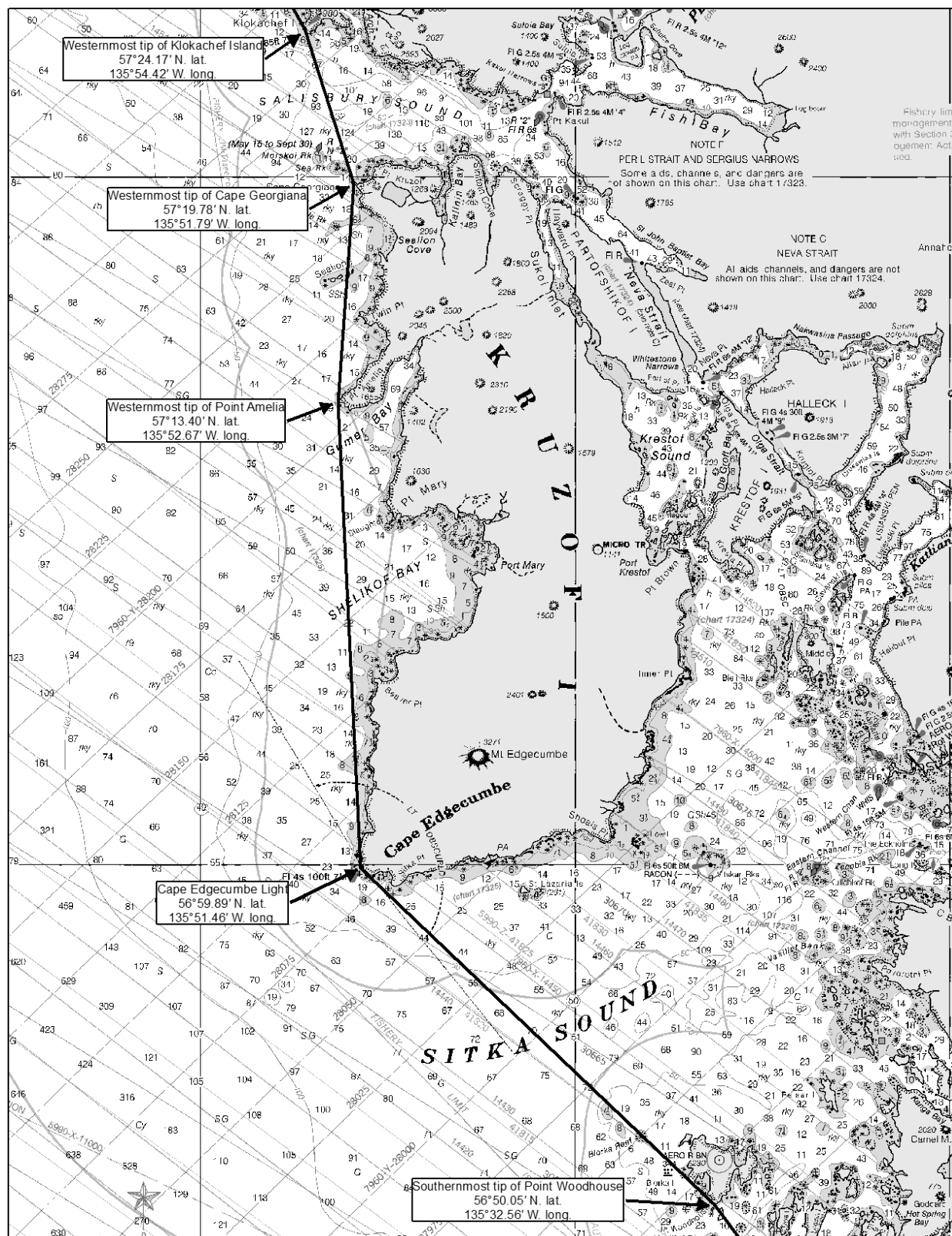
<u>2013 Weekly Chinook Salmon Harvest and Effort Data</u>						
Stat Week	Permits	Landings	Number	Pounds	Ave Price	Ave Wt.
41	117	127	1,226	15,029	\$6.76	12.3
42	95	147	1,507	19,403	\$6.75	12.9
43	106	150	1,333	15,886	\$6.83	11.9
44	82	112	843	10,602	\$6.78	12.6
45	90	129	975	11,919	\$7.29	12.2
46	79	112	790	9,993	\$7.43	12.6
47	51	64	348	4,321	\$7.44	12.4
48	59	71	426	5,227	\$7.69	12.3
49	39	54	295	3,650	\$7.67	12.4
50	27	36	193	2,481	\$8.24	12.9
51	32	38	163	2,117	\$8.36	13.0
52	14	20	58	791	\$8.74	13.6
53	10	10	31	443	\$9.13	14.3
01	20	25	57	812	\$9.11	14.3
02	36	47	208	2,566	\$8.82	12.3
03	47	67	255	3,454	\$8.97	13.5
04	49	64	442	5,793	\$9.27	13.1
05	47	65	286	3,799	\$9.69	13.3
06	51	66	302	3,946	\$9.87	13.1
07	40	52	274	3,523	\$9.71	12.9
08	54	68	460	6,035	\$10.05	13.1
09	58	72	236	3,131	\$10.04	13.3
10	125	184	1,104	14,132	\$10.10	12.8
11	95	126	959	12,364	\$10.12	12.9
12	97	147	970	12,482	\$9.71	12.9
13	106	141	1,021	12,572	\$9.52	12.3
14	164	208	1,910	23,743	\$9.38	12.4
15	94	109	882	10,987	\$9.50	12.5
16	211	286	2,864	35,215	\$9.28	12.3
17	236	350	4,150	51,368	\$8.91	12.4
18	160	178	2,044	25,303	\$8.96	12.4
	442	3,325	26,612	333,089	\$8.67	12.5

Note: Weeks and districts with less than 3 permits fished are omitted due to confidentiality considerations. Therefore, the totals may not reflect the sum of the weekly harvests shown.



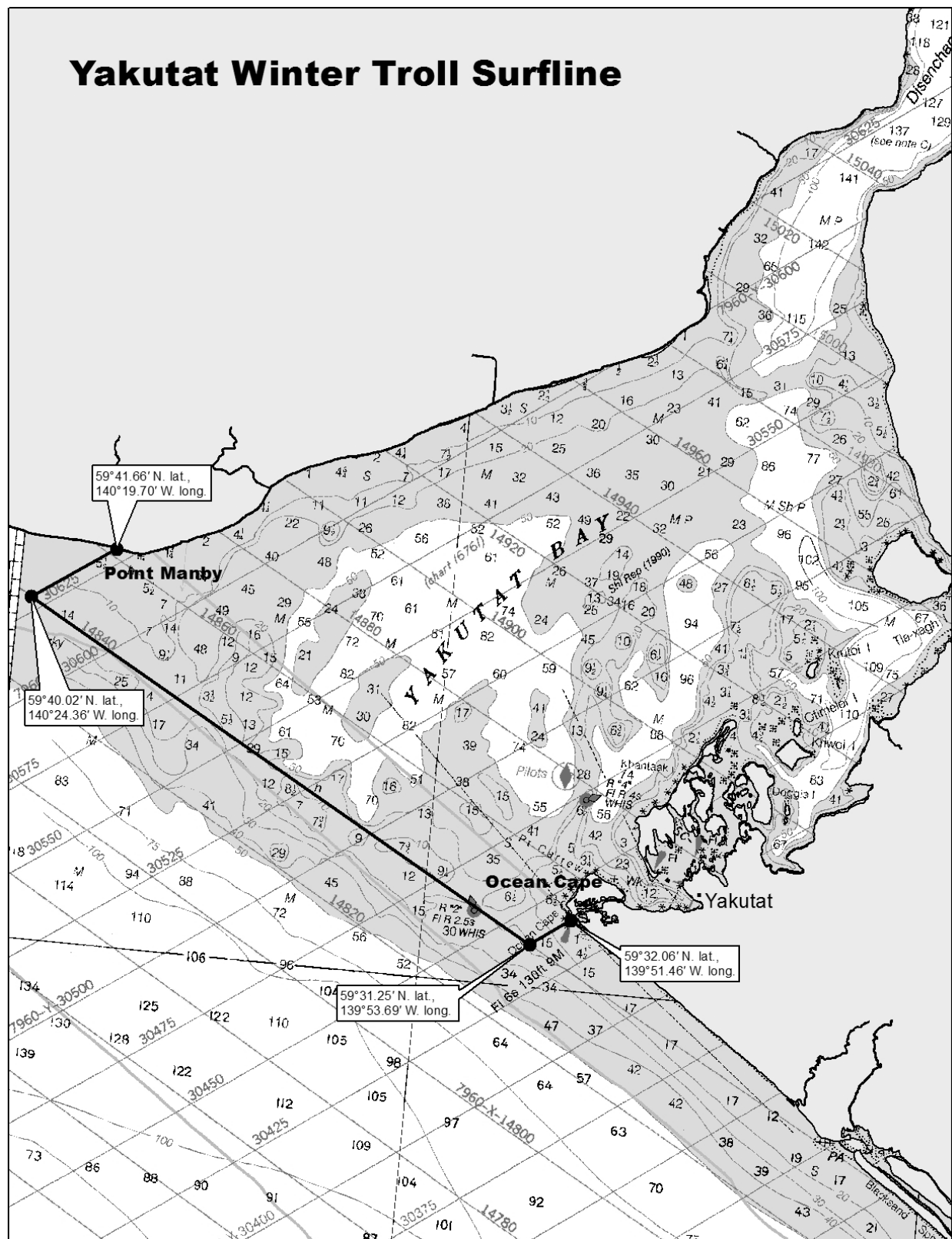
Note: For a full description of areas closed to winter trolling, see page 2 of this guide

Figure 1.–Southeast Alaska/Yakutat winter troll fishery areas.



Note: The Cape Edgecumbe Light coordinates are from the United States Coast Guard Light List, Vol. VI, 2013 and have been added to regulations by emergency order.

Figure 2.– Sitka area winter troll boundary line (surflines).



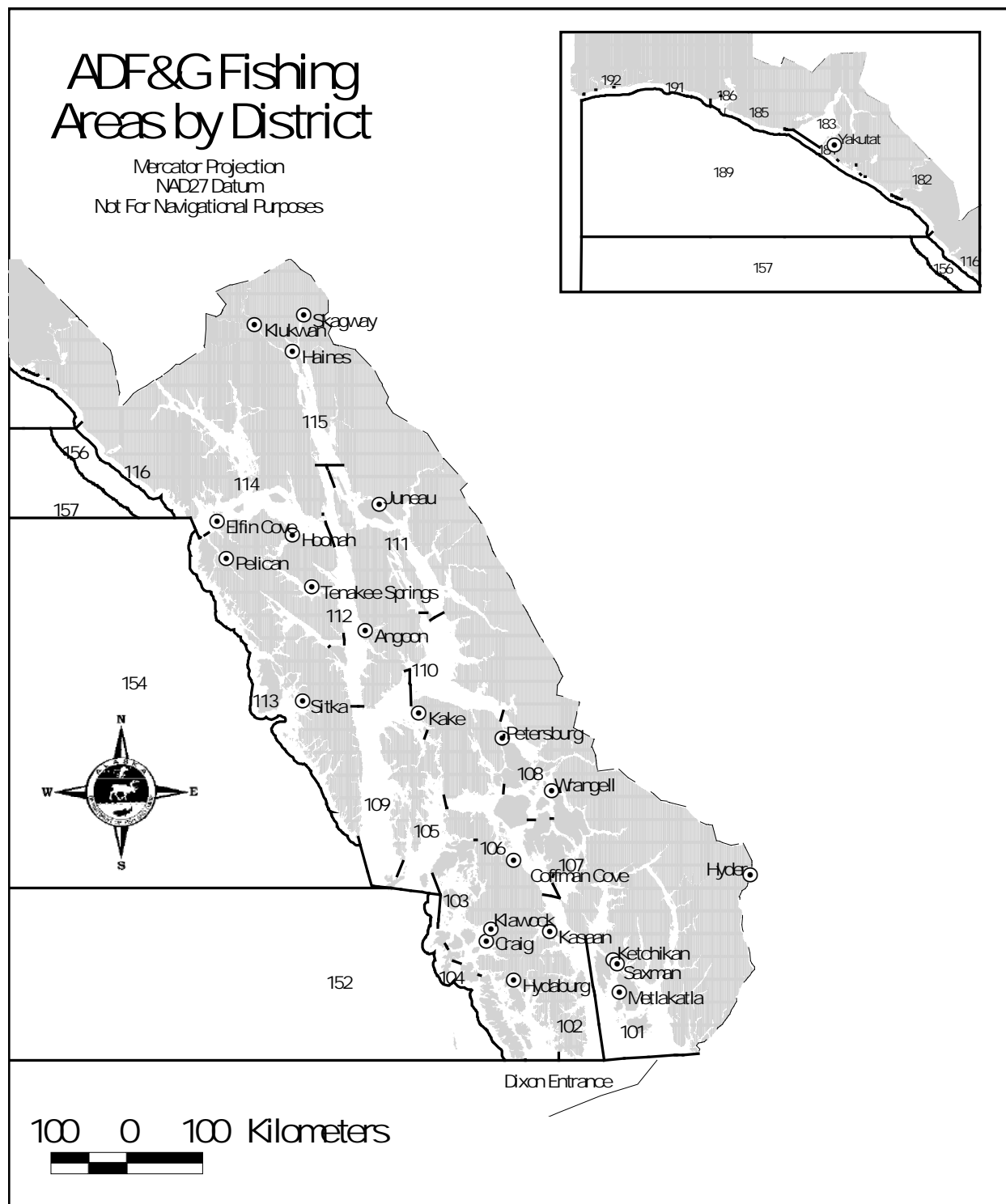


Figure 4.—Southeast Alaska/Yakutat salmon fishing districts.



Figure 5.—District 8 winter troll closed waters.

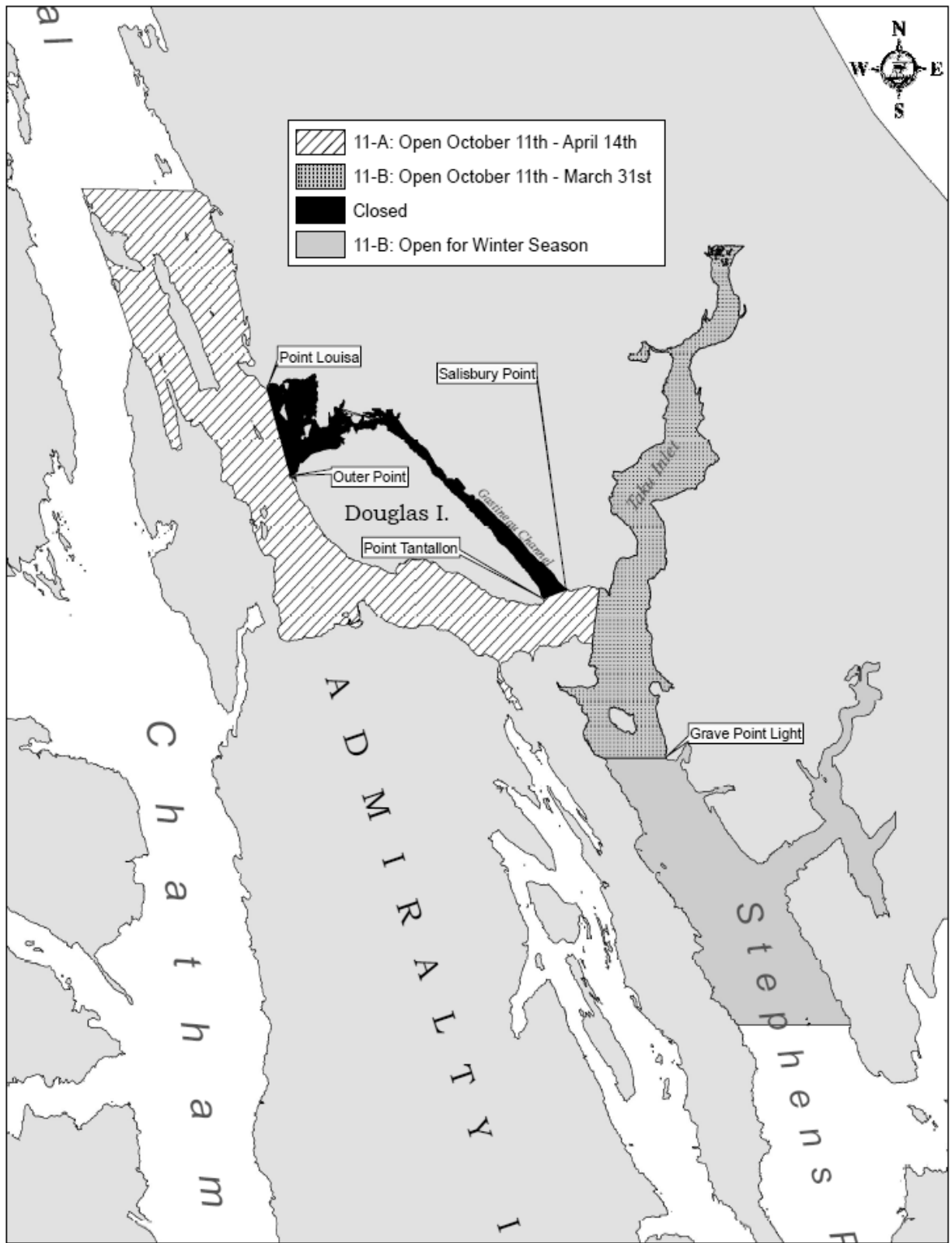
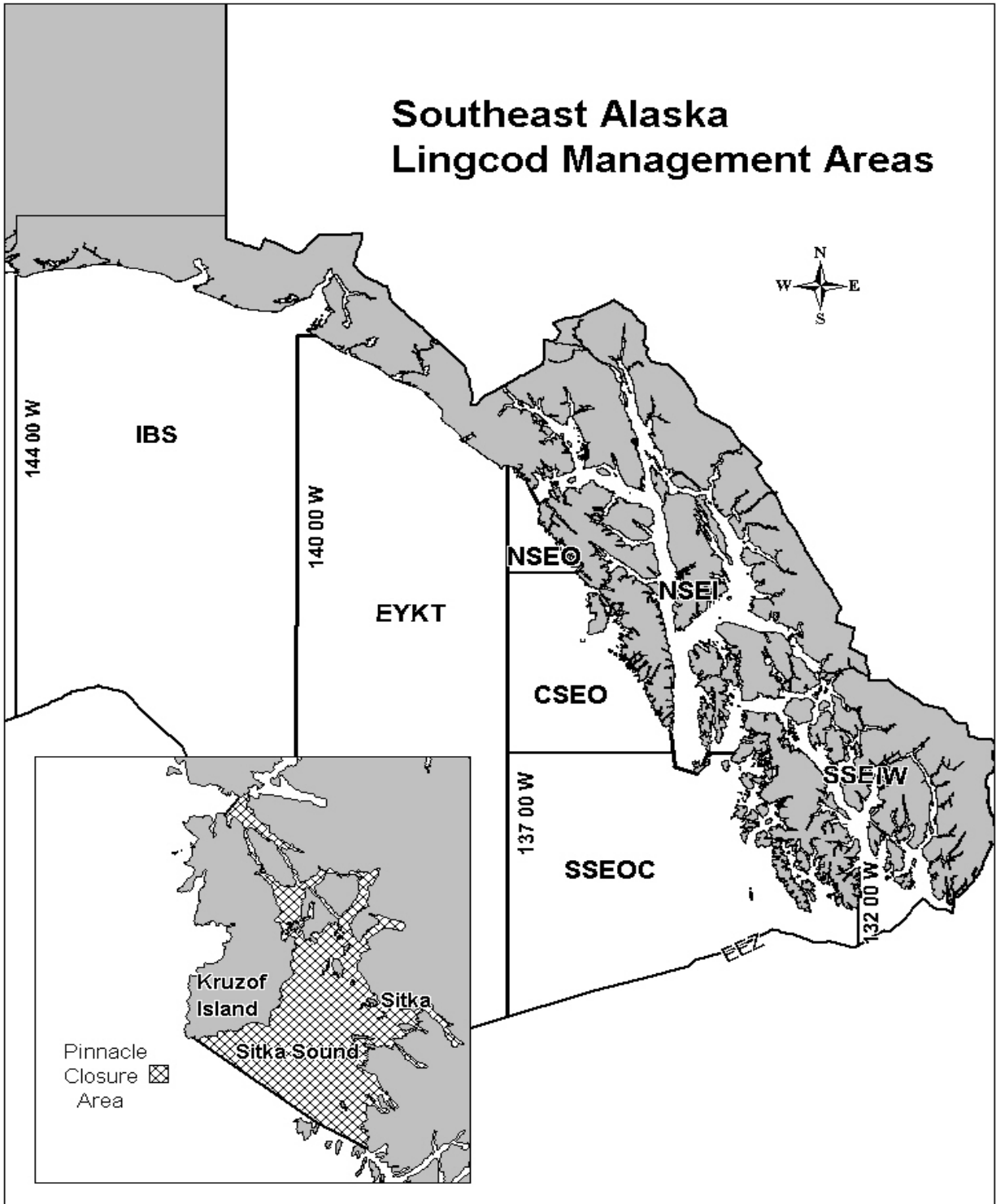


Figure 6.—District 11 winter troll fishing area.



Note: All areas will close to lingcod retention on November 30, unless closed earlier by emergency order.

Figure 7.—Southeast Alaska lingcod management areas.