

# **2010–2011 Winter Troll Fishery Management Plan**

**by**

**Pattie Skannes**

**and**

**Grant Hagerman**

---

September, 2010

---

Alaska Department of Fish and Game

Divisions of Commercial Fisheries



## Symbols and Abbreviations

The following symbols and abbreviations, and others approved for the Système International d'Unités (SI), are used without definition in the following reports by the Divisions of Sport Fish and of Commercial Fisheries: Fishery Manuscripts, Fishery Data Series Reports, Fishery Management Reports, and Special Publications. All others, including deviations from definitions listed below, are noted in the text at first mention, as well as in the titles or footnotes of tables, and in figure or figure captions.

Weights and measures (metric)		General		Measures (fisheries)	
centimeter	cm	Alaska Administrative		fork length	FL
deciliter	dL	Code	AAC	mideye-to-fork	MEF
gram	g	all commonly accepted		mideye-to-tail-fork	METF
hectare	ha	abbreviations	e.g., Mr., Mrs., AM, PM, etc.	standard length	SL
kilogram	kg			total length	TL
kilometer	km	all commonly accepted			
liter	L	professional titles	e.g., Dr., Ph.D., R.N., etc.	<b>Mathematics, statistics</b> <i>all standard mathematical signs, symbols and abbreviations</i>	
meter	m	at	@		
milliliter	mL	compass directions:			
millimeter	mm	east	E	alternate hypothesis	H <sub>A</sub>
		north	N	base of natural logarithm	<i>e</i>
		south	S	catch per unit effort	CPUE
		west	W	coefficient of variation	CV
		copyright	©	common test statistics	(F, t, $\chi^2$ , etc.)
		corporate suffixes:		confidence interval	CI
		Company	Co.	correlation coefficient	
		Corporation	Corp.	(multiple)	R
		Incorporated	Inc.	correlation coefficient	
		Limited	Ltd.	(simple)	r
		District of Columbia	D.C.	covariance	cov
		et alii (and others)	et al.	degree (angular)	°
		et cetera (and so forth)	etc.	degrees of freedom	df
		exempli gratia		expected value	<i>E</i>
		(for example)	e.g.	greater than	>
		Federal Information		greater than or equal to	≥
		Code	FIC	harvest per unit effort	HPUE
		id est (that is)	i.e.	less than	<
		latitude or longitude	lat. or long.	less than or equal to	≤
		monetary symbols		logarithm (natural)	ln
		(U.S.)	\$, ¢	logarithm (base 10)	log
		months (tables and		logarithm (specify base)	log <sub>2</sub> , etc.
		figures): first three		minute (angular)	'
		letters	Jan,...,Dec	not significant	NS
		registered trademark	®	null hypothesis	H <sub>0</sub>
		trademark	™	percent	%
		United States		probability	P
		(adjective)	U.S.	probability of a type I error	
		United States of		(rejection of the null	
		America (noun)	USA	hypothesis when true)	α
		U.S.C.	United States	probability of a type II error	
			Code	(acceptance of the null	
		U.S. state	use two-letter	hypothesis when false)	β
			abbreviations	second (angular)	"
			(e.g., AK, WA)	standard deviation	SD
				standard error	SE
				variance	
				population	Var
				sample	var
<b>Weights and measures (English)</b>					
cubic feet per second	ft <sup>3</sup> /s				
foot	ft				
gallon	gal				
inch	in				
mile	mi				
nautical mile	nmi				
ounce	oz				
pound	lb				
quart	qt				
yard	yd				
<b>Time and temperature</b>					
day	d				
degrees Celsius	°C				
degrees Fahrenheit	°F				
degrees kelvin	K				
hour	h				
minute	min				
second	s				
<b>Physics and chemistry</b>					
all atomic symbols					
alternating current	AC				
ampere	A				
calorie	cal				
direct current	DC				
hertz	Hz				
horsepower	hp				
hydrogen ion activity	pH				
(negative log of)					
parts per million	ppm				
parts per thousand	ppt, ‰				
volts	V				
watts	W				

***REGIONAL INFORMATION REPORT NO. 1J10-16***

**2010–2011 WINTER TROLL FISHERY MANAGEMENT PLAN**

by

Pattie Skannes, and Grant Hagerman  
Alaska Department of Fish and Game, Division of Commercial Fisheries, Sitka

Alaska Department of Fish and Game  
Division of Commercial Fisheries, Publications Section  
802 3rd, Douglas, Alaska, 99824-0020

September, 2010

The Regional Information Report Series was established in 1987 and was redefined in 2007 to meet the Division of Commercial Fisheries regional need for publishing and archiving information such as project operational plans, area management plans, budgetary information, staff comments and opinions to Board of Fisheries proposals, interim or preliminary data and grant agency reports, special meeting or minor workshop results and other regional information not generally reported elsewhere. Reports in this series may contain raw data and preliminary results. Reports in this series receive varying degrees of regional, biometric and editorial review; information in this series may be subsequently finalized and published in a different department reporting series or in the formal literature. Please contact the author or the Division of Commercial Fisheries if in doubt of the level of review or preliminary nature of the data reported. Regional Information Reports are available through the Alaska State Library and on the Internet at: <http://www.sf.adfg.ak.us/statewide/divreprots/html/intersearch.cfm>.

*Pattie Skannes and Grant Hagerman  
Alaska Department of Fish and Game, Division of Commercial Fisheries,  
304 Lake Street, Room 301, Sitka, Alaska 99835-7563 USA*

*This document should be cited as:*

*Skannes, P. and G. Hagerman. 2010. 2010–2011 Winter Troll Fishery Management Plan. Alaska Department of Fish and Game, Fishery Management Report No. 1J10-16, Douglas.*

The Alaska Department of Fish and Game (ADF&G) administers all programs and activities free from discrimination based on race, color, national origin, age, sex, religion, marital status, pregnancy, parenthood, or disability. The department administers all programs and activities in compliance with Title VI of the Civil Rights Act of 1964, Section 504 of the Rehabilitation Act of 1973, Title II of the Americans with Disabilities Act (ADA) of 1990, the Age Discrimination Act of 1975, and Title IX of the Education Amendments of 1972.

**If you believe you have been discriminated against in any program, activity, or facility please write:**

ADF&G ADA Coordinator, P.O. Box 115526, Juneau AK 99811-5526

U.S. Fish and Wildlife Service, 4040 N. Fairfax Drive, Suite 300 Webb, Arlington VA 22203

Office of Equal Opportunity, U.S. Department of the Interior, Washington DC 20240

**The department's ADA Coordinator can be reached via phone at the following numbers:**

(VOICE) 907-465-6077, (Statewide Telecommunication Device for the Deaf) 1-800-478-3648, (Juneau TDD) 907-465-3646, or (FAX) 907-465-6078

**For information on alternative formats and questions on this publication, please contact:**

ADF&G, Sport Fish Division, Research and Technical Services, 333 Raspberry Road, Anchorage AK 99518 (907) 267-2375

# TABLE OF CONTENTS

	Page
LIST OF TABLES.....	II
LIST OF FIGURES.....	II
ABSTRACT .....	3
INTRODUCTION.....	3
MANAGEMENT PLAN.....	3
2009–2010 WINTER TROLL HARVEST.....	3
REGULATION SUMMARY .....	3
Fishing Areas and Times .....	4
Closed Waters.....	4
Gear, Vessel Specifications and Registration .....	4
Size and Landing Requirements .....	5
Sport Fishing and Chartering From a Registered Troll Vessel .....	5
Regulations Pertaining To Commercial Troll Bycatch Of Groundfish And Halibut.....	5
FISHERY CONTACTS .....	8
ACKNOWLEDGEMENTS.....	22

## LIST OF TABLES

<b>Table</b>	<b>Page</b>
Table 1.—Winter troll Chinook harvest, October 11, 2009 through April 30, 2010, for Districts 101–103. ....	10
Table 2.—Winter troll Chinook harvest, October 11, 2009 through April 30, 2010, for Districts 104–105. ....	11
Table 3.—Winter troll Chinook harvest, October 11, 2009 through April 30, 2010, for Districts 106–108. ....	12
Table 4.—Winter troll Chinook harvest, October 11, 2009 through April 30, 2010, for Districts 109–112. ....	13
Table 5.—Winter troll Chinook harvest, October 11, 2009 through April 30, 2010, for Districts 113–114. ....	14
Table 6.—Winter troll Chinook harvest, October 11, 2009 through April 30, 2010, for District 183. ....	15
Table 7.—Weekly effort, harvest, average price and average weight in the 2010 winter troll fishery. ....	16

## LIST OF FIGURES

<b>Figure</b>	<b>Page</b>
Figure 1.—Southeast Alaska/Yakutat winter troll fishery areas. ....	17
Figure 2.—Sitka area winter troll boundary line (surflines). ....	18
Figure 3.—Yakutat Bay winter troll boundary line (surflines). ....	19
Figure 4.—Southeast Alaska/Yakutat salmon fishing districts. ....	20
Figure 5.—Southeast Alaska lingcod management areas. ....	21

## **ABSTRACT**

This report summarizes the plan that the Alaska Department of Fish and Game will follow to manage the 2010–2011 Southeast Alaska winter commercial troll Chinook salmon fishery, according to the Board of Fisheries regulations in the State of Alaska Administrative Code under 5 AAC 29.080.

Key words: Chinook salmon, troll, winter, commercial, management plan, Alaska

## **INTRODUCTION**

This plan summarizes the management approach the Alaska Department of Fish and Game (department) will employ to manage the Southeast Alaska/Yakutat commercial salmon winter troll fishery during the 2010–2011 season, provides harvest data from the previous winter troll season, and provides information about how regulations will be applied.

Regulations pertaining to the troll fishery are available in the *2009–2012 Southeast Alaska and Yakutat Commercial Salmon Fishing Regulations* pamphlet available at all Southeast Alaska ADF&G area offices.

## **MANAGEMENT PLAN**

The winter Chinook salmon troll fishery in Southeast Alaska is managed in accordance with the Alaska Board of Fisheries (BOF) winter troll management plan [5 AAC 29.080] and the Pacific Salmon Treaty (PST). The 2010–2011 Southeast and Yakutat commercial winter troll season begins October 11, 2010 and will continue through April 30, 2011, or until a total of 45,000 Chinook salmon are harvested [5 AAC 29.070 (b)(1) and 5 AAC 29.080 (a)]. Treaty Chinook salmon caught in the winter troll fishery count towards the 2011 Southeast Alaska troll fishery allocation and the 2011 Southeast Alaska all-gear Treaty quota. There is currently no quota yet established for the overall 2011 season; however, the winter troll fishery will be managed so the total harvest of all Chinook salmon does not exceed 45,000 fish, with a guideline harvest range of 43,000 to 47,000 fish [5 AAC 29.080 (a)]. Any Treaty Chinook salmon not harvested during the winter fishery will be available for harvest in the spring and summer fisheries. The 45,000 fish cap was reached prior to April 30 during the 2003–2007 winter seasons. Prior to 2003, the cap had not been exceeded since it went into effect in 1995. In 2010 the winter season closed on April 30 by regulation because only 95% of the cap had been harvested prior to that date.

## **2009–2010 WINTER TROLL HARVEST**

The 2009–2010 winter troll Chinook harvest was 42,536 fish, with a 12.6% Alaska hatchery contribution. This compares to a harvest of 24,889 fish with an Alaska hatchery contribution of 11.1% in 2008–2009, and a 2005 to 2009 average harvest of 38,594 fish. A total of 459 permits were fished in 2009–2010. This compares to 429 in 2008–2009 and a 2005 to 2009 average of 462 permits fished. Harvest and effort in 2010 were highest in March and April (Tables 1–7).

## **REGULATION SUMMARY**

Regulations pertaining to the Southeast Alaska winter trolling season are compiled in the *2009–2012 Southeast Alaska and Yakutat Commercial Salmon Fishing Regulations* pamphlet. The following list is a guide to the pertinent winter regulatory subsections. These regulations may be modified inseason by emergency order; any such changes will be announced via standard Commercial Fisheries Division News Releases. Copies of news releases, emergency orders, and regulation books are available at all Southeast Alaska Fish and Game area offices.

## FISHING AREAS AND TIMES

The winter troll fishery is confined to the area east of a line that extends from the westernmost tip of Point Manby through 59°41.66' N. lat., 140°19.70' W. long., to 59°40.02' N. lat., 140°24.36' W. long. to 59°31.25 N. lat., 139°53.69' W. long. to 59°32.06' N. lat, 139°51.46' W. long. and then continues along the surf line as described in [5 AAC 29.020 (b)] (Figures 1, 2, and 3). Trolling is also allowed within 500 yards of the terminus of any salmon stream during the winter season except as listed under 5 AAC 29.080(b) [5 AAC 29.150 (a)(1)]. Salmon fishing districts of Southeast Alaska and Yakutat are shown in Figure 4. Winter troll closed waters are described in the following section of this plan.

## CLOSED WATERS

Salmon trolling is permitted in all previously mentioned areas and at all times during the winter season, except as indicated below, according to 5 AAC 29.080 (b):

1. **District 1:** waters of Behm Canal in Section 1-D between a line from Nose Point to Snail Point and a line from Cactus Point to Point Eva are closed.
2. **District 8:** waters of the Stikine River inside a line from Babblers Point to Hour Point, along the shore of Wrangell Island to Point Highfield to the southernmost tip of Liesnoi Island to the southernmost tip of Greys Island to the small island near the eastern entrance of Blind Slough, to the nearest point of Mitkof Island, to the prominent point of Mitkof Island nearest Coney Island, to the northernmost tip of Coney Island, to a point 500 yards north of Jap Creek on the mainland shore are closed.
3. **District 11:**
  - A. Section 11-A is closed except those waters west of a line from Outer Point to Point Louisa and south and east of a line from Salisbury Point to Point Tantallon. This area will close at 11:59 p.m., April 14, regardless of whether the winter troll season is open after that date. The waters of Gastineau Channel are closed.
  - B. Section 11-B is open throughout the winter season except those waters north of the latitude of Grave Point Light are open only from October 11 through March 31.
4. **District 15:** waters of Section 15-B (Berners Bay) are closed.

Except for those areas specified in this section, all remaining waters listed in the "Closed Waters" section of the regulation book are open to trolling during the winter troll season.

## GEAR, VESSEL SPECIFICATIONS AND REGISTRATION

1. Troll vessels must be registered prior to fishing for the calendar year (5 AAC 29.115).
2. Troll vessels must be identified as specified in (5 AAC 39.119) and (5 AAC 29.125).
3. For troll gear specifications and operations see (5 AAC 29.120).

During the winter fishery only, hand-operated downriggers may be used in conjunction with fishing rods as follows (5 AAC 29.120(j)):

1. A downrigger may not be used with a troll gurdy;
2. A hand troll gurdy or downrigger powered by hand or hand crank may be used in conjunction with a fishing rod, and is not considered power troll gear;



3. An electric, hydraulic, or power assisted downrigger is considered a power troll gurdy and may not be used in conjunction with a fishing rod;
4. An aggregate of **two rods** with the fishing lines extending from the rods and connected to **two downriggers or hand troll gurdies** using a quick release device designed to release the fishing rod line from the downrigger line may be used;
5. No more than two troll gurdies, and four rigged fishing rods capable of taking fish, may be on board a salmon hand troll vessel; additional fishing rods may be on board the vessel but may not be rigged for taking fish.

## SIZE AND LANDING REQUIREMENTS

Chinook salmon caught in the winter troll fishery must be equal to or greater than 28 inches in total length and the heads of all adipose-fin clipped salmon must remain attached until the fish is sold. For further specifications see (5 AAC 29.140).

## SPORT FISHING AND CHARTERING FROM A REGISTERED TROLL VESSEL

1. A person may sport fish from a registered commercial salmon hand troll or power troll vessel [5 AAC 47.041 (a)]. A person who sport fishes from a vessel licensed for commercial fishing, other than a charter vessel, **in waters closed** to commercial salmon fishing shall, immediately upon bringing a salmon onboard, mark the salmon by **removing its dorsal fin** [5 AAC 47.041 (c)]. This regulation also applies when a person is sport fishing for a **species closed** to commercial trolling. Sport fishing from a commercially licensed vessel while commercially caught salmon are in possession is illegal in waters closed to commercial fishing [5 AAC 47.041(d)]. A troll gurdy may be used as a downrigger in conjunction with a sport fishing rod to sport fish for salmon.
2. A registered troll vessel may also be registered as a charter vessel. Charter boat registration applications are available at Fish and Game offices. A vessel registered both as a commercial troller and as a charter vessel may not be used to troll commercially and charter in the same day [5 AAC 75.995(8)].

## REGULATIONS PERTAINING TO COMMERCIAL TROLL BYCATCH OF GROUND FISH AND HALIBUT

For information on Southeast Alaska Groundfish regulations, refer to the 2010–2011 Statewide Commercial Groundfish Fishing Regulations booklet available at all Southeast ADF&G area offices. Information on groundfish bycatch allowances in the troll fishery can be found in the “Groundfish Bycatch in the 2010 Salmon Troll Fishery” news release that was issued on December 18, 2009.

In the state waters portion of the Eastern Gulf of Alaska, all groundfish incidentally taken by hand and power troll gear operated to take salmon consistent with applicable laws and regulations are legally taken and possessed with the following restrictions:

- The bycatch allowance for demersal shelf rockfish (DSR) is limited to 10% of the round weight of all salmon on board the vessel. All DSR in excess of 10% must be weighed and reported as bycatch overage on an ADF&G fish ticket. All proceeds from the sale of excess DSR bycatch taken in state waters shall be surrendered to the state [5 AAC 28.171 (a)]. The seven species of rockfish in the DSR assemblage are yelloweye, quillback, canary, rosethorn, copper, china, and tiger rockfish. DSR bycatch overages must be reported on fish tickets but may be kept for a person’s own use.
- The bycatch allowance for spiny dogfish in state waters is limited to 35% of the round weight of salmon on board the vessel.

- Lingcod may be taken as bycatch in the commercial salmon troll fishery only from May 16 through November 30 [5AAC 28.113 (c)].
- Lingcod must measure at least 27 inches from the tip of the snout to the tip of the tail, or 20.5 inches from the front of the dorsal fin to the tip of the tail.
- The 2010 commercial troll lingcod allocation has been harvested in the Icy Bay Subdistrict (IBS) and the Northern Southeast Outside (NSEO) Section and these areas are closed to lingcod retention for the remainder of the season. Lingcod allocation remains available for the fall portion of the winter troll fishery in the Central Southeast Outside (CSEO) Section, Southern Southeast Outer Coast (SSEOC) Sector, Northern Southeast Inside (NSEI) Subdistrict, and the Southern Southeast Internal Waters (SSEIW) Sector. Lingcod bycatch may be retained in these areas in unlimited amounts until area allocations are taken or November 30, whichever occurs first.
- The retention of lingcod is prohibited in the troll fishery in the waters of Sitka Sound [5AAC 28.150(a)]. The Sitka Sound closure area is defined as the waters that are enclosed on the north by lines from Kruzof Island at 57°20.50' N. lat., 135°45.17' W. long. to Chichagof Island at 57°22.05' N. lat., 135°43.00' W. long., and from Chichagof Island at 57°22.58' N. lat., 135°41.30' W. long. to Baranof Island at 57°22.28' N. lat., 135°40.95' W. long., and on the south and west by a line running from the southernmost tip of Sitka Point at 56°59.38' N. lat., 135°49.57' W. long. to Hanus Point at 56°51.92' N. lat., 135°30.50' W. long. to the green day marker in Dorothy Narrows at 56°49.28' N. lat., 135°22.75' W. long. to Baranof Island at 56°49.28' N. lat., 135°22.60' W. long.

Lingcod harvest allocations for the troll fishery are set by Lingcod Management Area (Figure 5) and area closures will occur as allocations are taken. Inseason closures will be announced by news release and marine radio broadcast by the United States Coast Guard and National Weather Service. For updates on lingcod area closures, call the Groundfish Hotline at 747-4882 or contact the Groundfish staff in Sitka at 747-6688.

#### **Other regulations:**

Halibut incidentally taken during an open commercial halibut season by power and hand troll gear being operated for salmon consistent with applicable state laws and regulations are legally taken and possessed [5AAC 28.133 (c)]. Commercial halibut may be legally retained only by IFQ permit holders during the open season for halibut. Trollers making an IFQ halibut landing of 500 lbs or less of IFQ weight as determined pursuant to 50 CFR 679.42(h) are exempted from the 3 hour Prior Notice of Landing (PNOL) if landed concurrently with a legal landing of salmon [50 CFR 679.5(l)(1)(iv)(A)]. Halibut taken incidentally during the troll fishery shall be reported on an ADF&G fish ticket using the CFEC salmon permit. For information on regulations and landing requirements for the federal IFQ halibut fishery contact the National Marine Fisheries Service.

Trollers are allowed to longline for groundfish and troll for salmon on the same trip as long as fish are not onboard the vessel in an area closed to commercial fishing or closed to retention of that species and the fisher has both a commercial salmon permit and the appropriate commercial longline permit.

A vessel may not participate in a directed fishery for groundfish with dinglebar troll or mechanical jig gear if they have commercial caught salmon on board. A vessel fishing for

groundfish with dinglebar troll gear must display the letter “D” and a vessel fishing for groundfish with mechanical jigging machines must display the letter “M” at all times when fishing with or transporting fish taken with dinglebar troll gear or mechanical jigging machines [5AAC 28.135 (a)(4)]. A person may not operate a vessel that is displaying one of these letters when the vessel is being used to fish for salmon [5AAC 28.135 (c)].

## FISHERY CONTACTS

The following are commercial fisheries division contacts regarding this management plan:

Pattie Skannes  
Troll Management Biologist  
304 Lake Street, #103  
Sitka, Alaska 99835  
(907) 747-6688

Grant Hagerman  
Assistant Troll Management Biologist  
304 Lake Street, #103  
Sitka, Alaska 99835  
(907) 747-6688

Bill Davidson  
Regional Management Biologist  
304 Lake Street, # 103  
Sitka, Alaska 99835  
(907) 747-6688

Scott Kelley  
Regional Supervisor  
P. O. Box 240020  
Douglas, Alaska 99824-0020  
(907) 465-4250

Troy Thynes and Kevin Clark  
Management Biologists  
P. O. Box 667  
Petersburg, Alaska 99833  
(907) 747-6688

Dave Gordon and Eric Coonradt  
Management Biologists  
304 Lake Street, # 103  
Sitka, Alaska 99835-7653  
(907) 747-6688

Tom Kowalske  
Management Biologist  
P.O. Box 200  
Wrangell, Alaska 99829  
(907) 874-3822

Kevin Monagle and Dave Harris  
Management Biologists  
P. O. Box 240020  
Douglas, Alaska 99824-0020  
(907) 465-4250

Scott Walker, Justin Breese and Bo Meredith  
Management Biologists  
2030 Sea Level Drive, Suite, 205  
Ketchikan, Alaska 99901  
(907) 225-5195

Randy Bachman  
Management Biologist  
P.O. Box 330  
Haines, Alaska 99827-0330  
(907) 766-2830 or 3124

Gordon Woods  
Management Technician  
P. O. Box 49  
Yakutat, Alaska 99689-0049  
(907) 784-3255

Nicole Zeiser  
Assistant Management Biologist  
P. O. Box 49  
Yakutat, Alaska 99689-0049  
(907) 784-3255

For up-to-date troll information, call the 24-hour information line in the Douglas Office at 465-TROL (8765). In addition, the following telephone numbers may be called during the troll fishing season to obtain recorded announcements concerning areas open to trolling.

Ketchikan-(907) 225-6870

Sitka-(907) 747-8765

Petersburg-(907) 772-3700

### SOUTHEAST ALASKA TROLL WEBSITE

[www.cf.adfg.state.ak.us/region1/finfish/salmon/troll/trolinfo.php](http://www.cf.adfg.state.ak.us/region1/finfish/salmon/troll/trolinfo.php)

## **TABLES AND FIGURES**

**Table 1.**–Winter troll Chinook harvest, October 11, 2009 through April 30, 2010, for Districts 101–103.

District	Week	Dates	Landings	Permits	Chinook	Chinook Per Landing	Chinook Per Permit	Ave Wt. (lbs)
101	42	Oct 11-17, 2009	8	8	71	8.9	8.9	11.11
101	43	Oct 18-24, 2009	8	8	153	19.1	19.1	12.03
101	44	Oct 25-31, 2009	4	4	32	8.0	8.0	11.22
101	49	Nov 29- Dec 5, 2009	4	3	29	7.3	9.7	11.48
101	50	Dec 6-12, 2009	5	5	31	6.2	6.2	12.10
101	06	Jan 31- Feb 6, 2010	3	3	37	12.3	12.3	12.00
101	09	Feb 21-27, 2010	4	3	19	4.8	6.3	10.58
101	13	Mar 21-27, 2010	4	4	42	10.5	10.5	11.88
101	16	Apr 11-17, 2010	4	4	26	6.5	6.5	11.65
101	17	Apr 18-24, 2010	3	3	6	2.0	2.0	15.33
101	18	Apr 25-30, 2010	4	4	13	3.3	3.3	14.23
<b>101 Total</b>			<b>70</b>	<b>27</b>	<b>606</b>	<b>8.7</b>	<b>22.4</b>	<b>11.96</b>
102	42	Oct 11-17, 2009	4	4	106	26.5	26.5	11.84
102	13	Mar 21-27, 2010	5	4	129	25.8	32.3	12.42
102	15	Apr 4-10, 2010	3	3	22	7.3	7.3	14.09
102	16	Apr 11-17, 2010	7	6	90	12.9	15.0	12.09
102	17	Apr 18-24, 2010	3	3	39	13.0	13.0	13.00
<b>102 Total</b>			<b>32</b>	<b>11</b>	<b>468</b>	<b>14.6</b>	<b>42.5</b>	<b>12.19</b>
103	42	Oct 11-17, 2009	5	4	59	11.8	14.8	13.25
103	43	Oct 18-24, 2009	5	5	49	9.8	9.8	12.63
103	44	Oct 25-31, 2009	3	3	36	12.0	12.0	12.97
103	45	Nov 1-7, 2009	6	5	75	12.5	15.0	12.99
103	46	Nov 8-14, 2009	7	4	32	4.6	8.0	12.72
103	47	Nov 15-21, 2009	9	8	92	10.2	11.5	13.11
103	48	Nov 22-28, 2009	5	5	80	16.0	16.0	12.60
103	49	Nov 29- Dec 5, 2009	6	6	47	7.8	7.8	13.72
103	50	Dec 6-12, 2009	8	7	81	10.1	11.6	12.72
103	51	Dec 13-19, 2009	8	8	31	3.9	3.9	14.68
103	52	Dec 20-26, 2009	3	3	17	5.7	5.7	11.35
103	53	Dec 27-31, 2009	6	5	15	2.5	3.0	12.93
103	04	Jan 17-23, 2010	3	3	12	4.0	4.0	12.50
103	06	Jan 31- Feb 6, 2010	5	5	26	5.2	5.2	14.08
103	09	Feb 21-27, 2010	10	9	54	5.4	6.0	14.11
103	13	Mar 21-27, 2010	8	7	60	7.5	8.6	12.86
103	14	Mar 28- Apr 3, 2010	4	4	21	5.3	5.3	13.81
103	15	Apr 4-10, 2010	6	5	45	7.5	9.0	13.00
103	16	Apr 11-17, 2010	10	9	145	14.5	16.1	14.39
103	17	Apr 18-24, 2010	23	16	330	14.3	20.6	13.72
103	18	Apr 25-30, 2010	15	13	98	6.5	7.5	13.47
<b>103 Total</b>			<b>166</b>	<b>38</b>	<b>1,456</b>	<b>8.8</b>	<b>38.3</b>	<b>13.42</b>

Note: Weeks and districts with less than 3 permits fished are omitted due to confidentiality considerations. Therefore, the totals may not reflect the sum of the weekly harvests shown.

**Table 2.**–Winter troll Chinook harvest, October 11, 2009 through April 30, 2010, for Districts 104–105.

District	Week	Dates	Landings	Permits	Chinook	Chinook Per Landing	Chinook Per Permit	Ave Wt. (lbs)
104	13	Mar 21-27, 2010	4	4	94	23.5	23.5	13.09
104	15	Apr 4-10, 2010	5	5	96	19.2	19.2	12.88
104	16	Apr 11-17, 2010	10	9	259	25.9	28.8	12.98
104	17	Apr 18-24, 2010	10	8	294	29.4	36.8	14.53
104	18	Apr 25-30, 2010	9	9	178	19.8	19.8	15.60
<b>104 Total</b>			<b>42</b>	<b>22</b>	<b>949</b>	<b>22.6</b>	<b>43.1</b>	<b>13.95</b>
105	49	Nov 29- Dec 5, 2009	5	3	20	4.0	6.7	13.45
105	50	Dec 6-12, 2009	4	3	34	8.5	11.3	12.18
105	03	Jan 10-16, 2010	4	3	17	4.3	5.7	13.24
105	04	Jan 17-23, 2010	3	3	22	7.3	7.3	13.14
105	06	Jan 31- Feb 6, 2010	5	5	41	8.2	8.2	14.15
105	07	Feb 7-13, 2010	11	8	55	5.0	6.9	13.55
105	08	Feb 14-20, 2010	7	7	56	8.0	8.0	13.61
105	09	Feb 21-27, 2010	11	9	150	13.6	16.7	13.33
105	10	Feb 28- Mar 6, 2010	7	6	68	9.7	11.3	13.94
105	11	Mar 7-13, 2010	5	5	23	4.6	4.6	12.57
105	12	Mar 14-20, 2010	8	5	139	17.4	27.8	14.29
105	13	Mar 21-27, 2010	18	16	273	15.2	17.1	13.28
105	14	Mar 28- Apr 3, 2010	16	11	146	9.1	13.3	13.63
105	15	Apr 4-10, 2010	23	18	240	10.4	13.3	13.01
105	16	Apr 11-17, 2010	24	18	355	14.8	19.7	12.67
105	17	Apr 18-24, 2010	13	11	216	16.6	19.6	13.70
105	18	Apr 25-30, 2010	14	11	317	22.6	28.8	14.63
<b>105 Total</b>			<b>193</b>	<b>41</b>	<b>2,289</b>	<b>11.9</b>	<b>55.8</b>	<b>13.56</b>

Note: Weeks and districts with less than 3 permits fished are omitted due to confidentiality considerations. Therefore, the totals may not reflect the sum of the weekly harvests shown.

**Table 3.**—Winter troll Chinook harvest, October 11, 2009 through April 30, 2010, for Districts 106–108.

District	Week	Dates	Landings	Permits	Chinook	Chinook Per Landing	Chinook Per Permit	Ave Wt. (lbs)
106	44	Oct 25-31, 2009	6	6	25	4.2	4.2	14.57
106	46	Nov 8-14, 2009	5	3	93	18.6	31.0	12.89
106	47	Nov 15-21, 2009	8	6	31	3.9	5.2	13.00
106	48	Nov 22-28, 2009	3	3	43	14.3	14.3	6.47
106	49	Nov 29- Dec 5, 2009	10	6	18	1.8	3.0	15.27
106	50	Dec 6-12, 2009	28	9	60	2.1	6.7	15.70
106	51	Dec 13-19, 2009	5	3	7	1.4	2.3	13.99
106	52	Dec 20-26, 2009	12	9	27	2.3	3.0	17.21
106	53	Dec 27-31, 2009	18	12	28	1.6	2.3	14.30
106	03	Jan 10-16, 2010	8	5	11	1.4	2.2	13.24
106	04	Jan 17-23, 2010	20	9	42	2.1	4.7	14.84
106	05	Jan 24-30, 2010	7	6	12	1.7	2.0	19.16
106	06	Jan 31- Feb 6, 2010	5	5	7	1.4	1.4	15.46
106	07	Feb 7-13, 2010	9	5	14	1.6	2.8	13.83
106	08	Feb 14-20, 2010	6	5	17	2.8	3.4	13.85
106	09	Feb 21-27, 2010	6	4	14	2.3	3.5	14.56
106	10	Feb 28- Mar 6, 2010	3	3	4	1.3	1.3	12.30
106	11	Mar 7-13, 2010	4	3	6	1.5	2.0	15.07
106	12	Mar 14-20, 2010	4	3	10	2.5	3.3	15.58
106	13	Mar 21-27, 2010	3	3	6	2.0	2.0	14.67
106	15	Apr 4-10, 2010	8	7	27	3.4	3.9	15.23
106	16	Apr 11-17, 2010	11	5	23	2.1	4.6	15.75
106	17	Apr 18-24, 2010	10	9	41	4.1	4.6	15.70
106	18	Apr 25-30, 2010	7	5	80	11.4	16.0	13.93
<b>106 Total</b>			<b>215</b>	<b>36</b>	<b>660</b>	<b>3.1</b>	<b>18.3</b>	<b>14.08</b>
107	42	Oct 11-17, 2009	3	3	27	9.0	9.0	11.52
<b>107 Total</b>			<b>8</b>	<b>6</b>	<b>87</b>	<b>10.9</b>	<b>14.5</b>	<b>12.34</b>
108	42	Oct 11-17, 2009	5	5	19	3.8	3.8	14.67
108	43	Oct 18-24, 2009	11	8	71	6.5	8.9	12.77
108	47	Nov 15-21, 2009	5	3	21	4.2	7.0	12.94
108	48	Nov 22-28, 2009	8	5	23	2.9	4.6	15.12
108	49	Nov 29- Dec 5, 2009	9	7	21	2.3	3.0	14.25
108	50	Dec 6-12, 2009	7	6	18	2.6	3.0	11.49
108	04	Jan 17-23, 2010	5	5	18	3.6	3.6	12.49
108	06	Jan 31- Feb 6, 2010	7	4	18	2.6	4.5	15.94
108	09	Feb 21-27, 2010	3	3	11	3.7	3.7	11.17
108	13	Mar 21-27, 2010	3	3	4	1.3	1.3	18.48
108	15	Apr 4-10, 2010	4	4	11	2.8	2.8	13.25
108	16	Apr 11-17, 2010	8	4	37	4.6	9.3	16.22
108	17	Apr 18-24, 2010	6	5	13	2.2	2.6	14.60
108	18	Apr 25-30, 2010	14	12	23	1.6	1.9	14.58
<b>108 Total</b>			<b>116</b>	<b>41</b>	<b>399</b>	<b>3.4</b>	<b>9.7</b>	<b>13.54</b>

Note: Weeks and districts with less than 3 permits fished are omitted due to confidentiality considerations. Therefore, the totals may not reflect the sum of the weekly harvests shown.



**Table 4.**—Winter troll Chinook harvest, October 11, 2009 through April 30, 2010, for Districts 109–112.

District	Week	Dates	Landings	Permits	Chinook	Chinook Per Landing	Chinook Per Permit	Ave Wt. (lbs)
109	45	Nov 1-7, 2009	3	3	17	5.7	5.7	13.29
109	07	Feb 7-13, 2010	5	4	18	3.6	4.5	15.89
109	09	Feb 21-27, 2010	4	4	57	14.3	14.3	12.83
109	10	Feb 28- Mar 6, 2010	4	4	73	18.3	18.3	13.23
109	13	Mar 21-27, 2010	4	4	104	26.0	26.0	12.75
109	14	Mar 28- Apr 3, 2010	5	5	124	24.8	24.8	12.23
109	15	Apr 4-10, 2010	6	6	74	12.3	12.3	12.95
109	16	Apr 11-17, 2010	12	11	123	10.3	11.2	12.92
109	17	Apr 18-24, 2010	13	12	261	20.1	21.8	13.66
109	18	Apr 25-30, 2010	11	11	215	19.5	19.5	14.33
<b>109 Total</b>			<b>90</b>	<b>35</b>	<b>1,269</b>	<b>14.1</b>	<b>36.3</b>	<b>13.32</b>
110	42	Oct 11-17, 2009	25	24	754	30.2	31.4	13.17
110	43	Oct 18-24, 2009	19	17	372	19.6	21.9	13.71
110	44	Oct 25-31, 2009	16	13	237	14.8	18.2	13.34
110	45	Nov 1-7, 2009	12	11	206	17.2	18.7	13.04
110	46	Nov 8-14, 2009	12	12	158	13.2	13.2	13.40
110	48	Nov 22-28, 2009	3	3	42	14.0	14.0	14.54
110	49	Nov 29- Dec 5, 2009	8	6	98	12.3	16.3	12.00
110	50	Dec 6-12, 2009	10	10	144	14.4	14.4	13.42
110	51	Dec 13-19, 2009	4	4	71	17.8	17.8	13.30
110	52	Dec 20-26, 2009	3	3	23	7.7	7.7	12.67
110	53	Dec 27-31, 2009	8	8	74	9.3	9.3	11.90
110	03	Jan 10-16, 2010	5	4	71	14.2	17.8	13.00
110	04	Jan 17-23, 2010	6	6	56	9.3	9.3	12.76
110	06	Jan 31- Feb 6, 2010	10	10	44	4.4	4.4	13.74
110	07	Feb 7-13, 2010	5	4	22	4.4	5.5	14.37
110	08	Feb 14-20, 2010	5	3	7	1.4	2.3	17.60
110	09	Feb 21-27, 2010	4	4	24	6.0	6.0	15.67
110	12	Mar 14-20, 2010	3	3	20	6.7	6.7	17.42
110	15	Apr 4-10, 2010	4	4	10	2.5	2.5	20.44
110	16	Apr 11-17, 2010	3	3	3	1.0	1.0	22.33
110	17	Apr 18-24, 2010	7	6	57	8.1	9.5	14.33
110	18	Apr 25-30, 2010	9	8	81	9.0	10.1	15.11
<b>110 Total</b>			<b>186</b>	<b>46</b>	<b>2,592</b>	<b>13.9</b>	<b>56.3</b>	<b>13.44</b>
111	46	Nov 8-14, 2009	3	3	8	2.7	2.7	21.81
<b>111 Total</b>			<b>10</b>	<b>7</b>	<b>45</b>	<b>4.5</b>	<b>6.4</b>	<b>16.61</b>
<b>112 Total</b>			<b>7</b>	<b>5</b>	<b>58</b>	<b>8.3</b>	<b>11.6</b>	<b>13.04</b>

Note: Weeks and districts with less than 3 permits fished are omitted due to confidentiality considerations. Therefore, the totals may not reflect the sum of the weekly harvests shown.

**Table 5.**—Winter troll Chinook harvest, October 11, 2009 through April 30, 2010, for Districts 113–114.

District	Week	Dates	Landings	Permits	Chinook	Chinook Per Landing	Chinook Per Permit	Ave Wt. (lbs)
113	42	Oct 11-17, 2009	35	31	295	8.4	9.5	12.19
113	43	Oct 18-24, 2009	40	34	357	8.9	10.5	13.25
113	44	Oct 25-31, 2009	25	19	176	7.0	9.3	13.19
113	45	Nov 1-7, 2009	43	34	404	9.4	11.9	12.99
113	46	Nov 8-14, 2009	37	31	252	6.8	8.1	12.10
113	47	Nov 15-21, 2009	43	31	363	8.4	11.7	11.38
113	48	Nov 22-28, 2009	16	14	77	4.8	5.5	12.74
113	49	Nov 29- Dec 5, 2009	10	7	34	3.4	4.9	13.47
113	50	Dec 6-12, 2009	45	28	251	5.6	9.0	12.66
113	51	Dec 13-19, 2009	17	15	66	3.9	4.4	13.02
113	52	Dec 20-26, 2009	6	4	16	2.7	4.0	17.31
113	53	Dec 27-31, 2009	22	17	193	8.8	11.4	14.63
113	02	Jan 3-9, 2010	11	9	70	6.4	7.8	14.61
113	03	Jan 10-16, 2010	8	6	37	4.6	6.2	16.81
113	04	Jan 17-23, 2010	29	20	78	2.7	3.9	15.12
113	05	Jan 24-30, 2010	10	10	42	4.2	4.2	15.48
113	06	Jan 31- Feb 6, 2010	58	41	352	6.1	8.6	14.25
113	07	Feb 7-13, 2010	19	16	112	5.9	7.0	14.77
113	08	Feb 14-20, 2010	25	23	198	7.9	8.6	14.03
113	09	Feb 21-27, 2010	112	66	1,406	12.6	21.3	12.81
113	10	Feb 28- Mar 6, 2010	26	22	78	3.0	3.5	15.22
113	11	Mar 7-13, 2010	11	11	30	2.7	2.7	15.43
113	12	Mar 14-20, 2010	63	56	473	7.5	8.4	14.53
113	13	Mar 21-27, 2010	167	92	3,160	18.9	34.3	13.69
113	14	Mar 28- Apr 3, 2010	98	75	1,004	10.2	13.4	13.75
113	15	Apr 4-10, 2010	121	90	1,065	8.8	11.8	13.80
113	16	Apr 11-17, 2010	141	106	1,539	10.9	14.5	14.28
113	17	Apr 18-24, 2010	261	152	6,399	24.5	42.1	12.59
113	18	Apr 25-30, 2010	254	180	8,269	32.6	45.9	12.44
<b>113 Total</b>			<b>1,753</b>	<b>218</b>	<b>26,796</b>	<b>15.3</b>	<b>122.9</b>	<b>13.00</b>
114	42	Oct 11-17, 2009	8	7	75	9.4	10.7	15.14
114	43	Oct 18-24, 2009	4	3	10	2.5	3.3	17.40
114	46	Nov 8-14, 2009	3	3	18	6.0	6.0	15.11
114	53	Dec 27-31, 2009	3	3	8	2.7	2.7	18.91
114	02	Jan 3-9, 2010	3	3	8	2.7	2.7	18.66
114	10	Feb 28- Mar 6, 2010	3	3	15	5.0	5.0	15.51
114	12	Mar 14-20, 2010	6	6	28	4.7	4.7	16.34
114	13	Mar 21-27, 2010	4	3	16	4.0	5.3	13.66
114	14	Mar 28- Apr 3, 2010	10	9	58	5.8	6.4	15.83
114	15	Apr 4-10, 2010	11	10	119	10.8	11.9	13.85
114	16	Apr 11-17, 2010	14	12	120	8.6	10.0	14.20
114	17	Apr 18-24, 2010	20	18	206	10.3	11.4	14.57
114	18	Apr 25-30, 2010	28	22	342	12.2	15.5	13.77
<b>114 Total</b>			<b>138</b>	<b>45</b>	<b>1,132</b>	<b>8.2</b>	<b>25.2</b>	<b>14.49</b>

Note: Weeks and districts with less than 3 permits fished are omitted due to confidentiality considerations. Therefore, the totals may not reflect the sum of the weekly harvests shown.

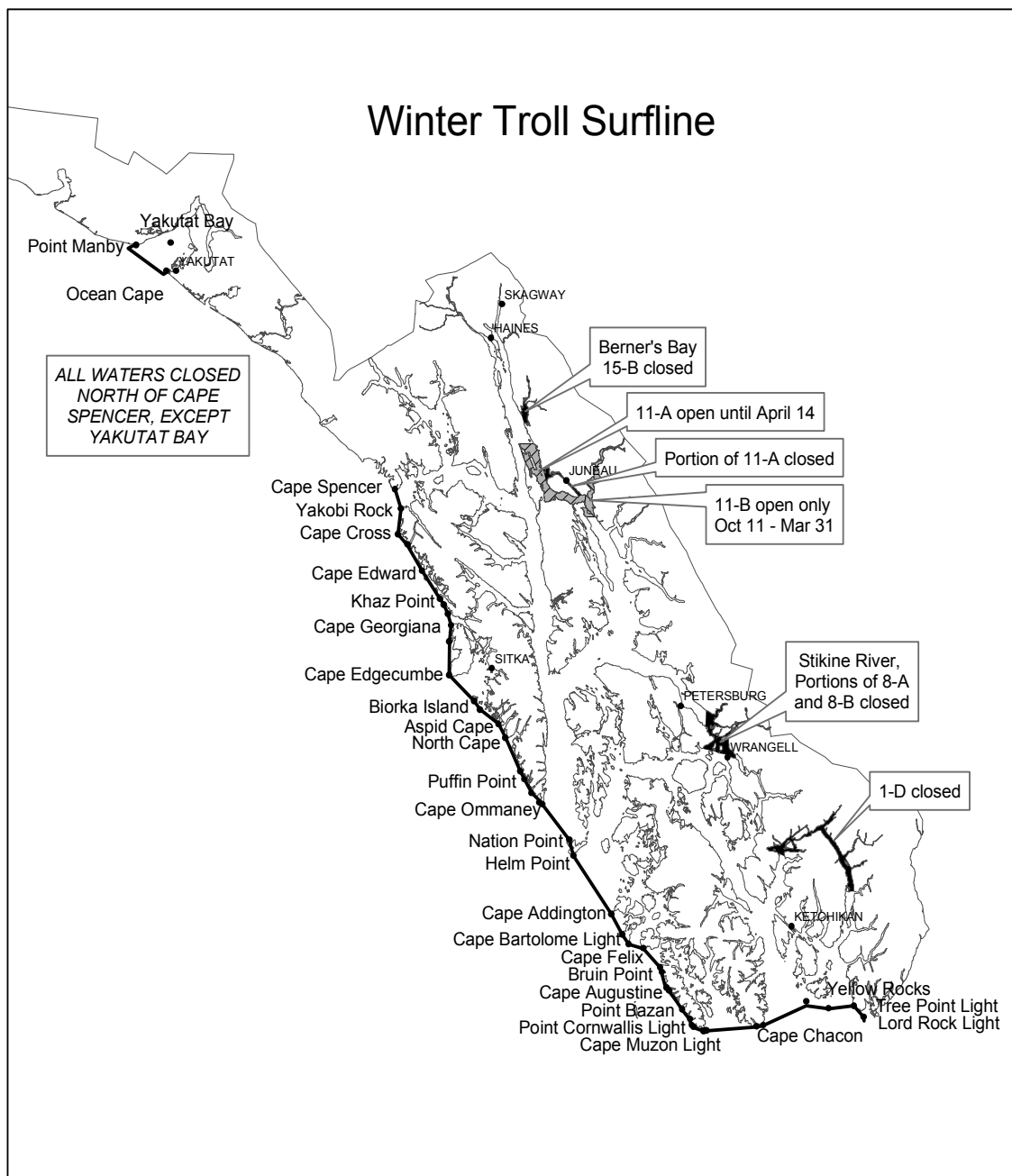
**Table 6.**—Winter troll Chinook harvest, October 11, 2009 through April 30, 2010, for District 183.

District	Week	Dates	Landings	Permits	Chinook	Chinook Per Landing	Chinook Per Permit	Ave Wt. (lbs)
183	42	Oct 11-17, 2009	33	16	348	10.5	21.8	13.66
183	43	Oct 18-24, 2009	35	20	473	13.5	23.7	13.36
183	44	Oct 25-31, 2009	5	3	18	3.6	6.0	12.06
183	45	Nov 1-7, 2009	8	6	34	4.3	5.7	14.72
183	46	Nov 8-14, 2009	20	12	180	9.0	15.0	12.21
183	47	Nov 15-21, 2009	13	10	72	5.5	7.2	11.90
183	48	Nov 22-28, 2009	11	6	74	6.7	12.3	11.56
183	49	Nov 29- Dec 5, 2009	14	8	60	4.3	7.5	11.02
183	50	Dec 6-12, 2009	22	13	97	4.4	7.5	12.70
183	51	Dec 13-19, 2009	23	11	142	6.2	12.9	12.10
183	52	Dec 20-26, 2009	22	14	93	4.2	6.6	11.73
183	53	Dec 27-31, 2009	45	20	226	5.0	11.3	12.24
183	01	Jan 1-2, 2010	5	5	15	3.0	3.0	12.60
183	02	Jan 3-9, 2010	20	9	82	4.1	9.1	14.29
183	03	Jan 10-16, 2010	14	9	42	3.0	4.7	13.45
183	04	Jan 17-23, 2010	32	16	88	2.8	5.5	13.03
183	05	Jan 24-30, 2010	31	19	107	3.5	5.6	12.19
183	06	Jan 31- Feb 6, 2010	27	18	70	2.6	3.9	12.98
183	07	Feb 7-13, 2010	25	14	65	2.6	4.6	13.96
183	08	Feb 14-20, 2010	20	12	47	2.4	3.9	12.82
183	09	Feb 21-27, 2010	48	19	232	4.8	12.2	13.14
183	10	Feb 28- Mar 6, 2010	13	7	31	2.4	4.4	15.12
183	11	Mar 7-13, 2010	7	6	19	2.7	3.2	14.00
183	12	Mar 14-20, 2010	36	19	162	4.5	8.5	12.78
183	13	Mar 21-27, 2010	44	27	176	4.0	6.5	13.48
183	14	Mar 28- Apr 3, 2010	21	15	67	3.2	4.5	14.78
183	15	Apr 4-10, 2010	33	19	119	3.6	6.3	14.48
183	16	Apr 11-17, 2010	31	16	142	4.6	8.9	13.64
183	17	Apr 18-24, 2010	27	15	212	7.9	14.1	14.61
183	18	Apr 25-30, 2010	39	23	237	6.1	10.3	13.62
<b>183 Total</b>			<b>724</b>	<b>49</b>	<b>3,730</b>	<b>5.2</b>	<b>76.1</b>	<b>13.18</b>

Note: Weeks and districts with less than 3 permits fished are omitted due to confidentiality considerations. Therefore, the totals may not reflect the sum of the weekly harvests shown.

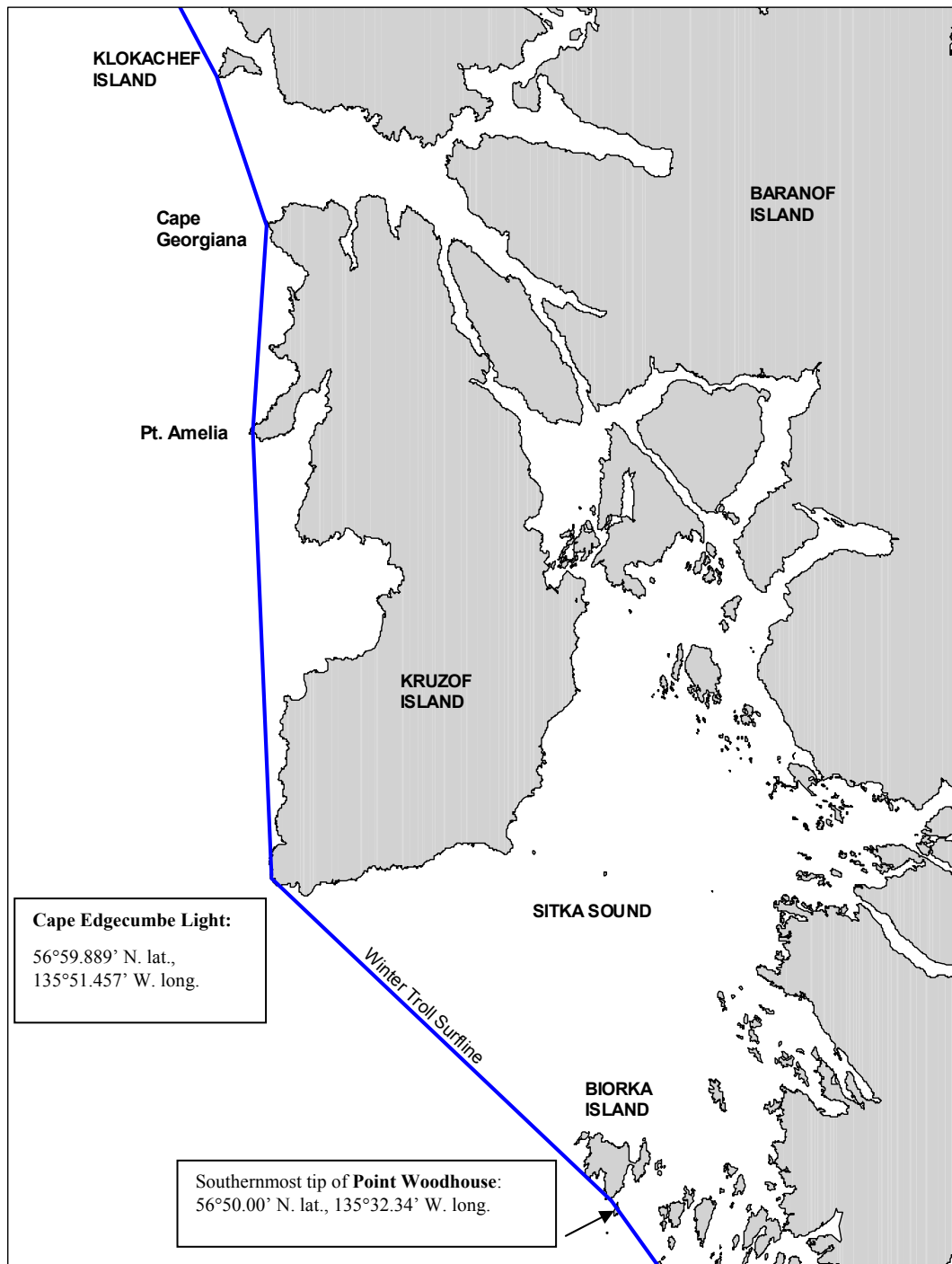
**Table 7.**—Weekly effort, harvest, average price and average weight in the 2010 winter troll fishery.

<b>2010 Weekly Chinook Salmon Catch and Effort Data</b>						
<b>Week</b>	<b>Permits</b>	<b>Landings</b>	<b>Number</b>	<b>Pounds</b>	<b>Ave. Price</b>	<b>Ave. Wt. (lbs)</b>
42	105	129	1,807	23,319	\$5.65	12.98
43	105	132	1,600	20,942	\$5.60	13.22
44	54	67	572	7,498	\$5.64	13.15
45	66	79	778	10,109	\$5.79	13.06
46	71	94	775	9,788	\$6.25	12.71
47	61	85	601	7,202	\$6.62	12.02
48	40	50	357	4,268	\$6.61	12.06
49	47	69	336	4,273	\$6.83	12.72
50	82	136	757	9,915	\$7.03	13.11
51	44	60	335	4,328	\$7.11	12.92
52	38	52	215	2,820	\$7.01	13.12
53	71	108	582	7,704	\$6.98	13.24
01	6	6	16	212	\$7.84	13.25
02	26	39	197	2,888	\$7.25	14.66
03	32	45	197	2,781	\$7.49	14.12
04	65	105	336	4,606	\$7.75	13.75
05	40	54	187	2,529	\$7.74	13.52
06	94	126	660	9,207	\$7.90	13.97
07	56	80	302	4,286	\$7.88	14.27
08	57	72	378	5,205	\$7.98	13.77
09	123	205	2,012	25,932	\$7.95	12.93
10	51	62	319	4,552	\$7.97	14.27
11	31	33	123	1,682	\$7.97	13.68
12	96	124	915	12,772	\$8.00	14.02
13	164	265	4,068	55,072	\$7.95	13.55
14	126	162	1,458	20,011	\$7.82	13.75
15	170	224	1,850	25,339	\$7.61	13.72
16	197	274	2,866	39,555	\$7.82	13.83
17	251	396	8,074	104,177	\$8.06	12.91
18	295	405	9,863	125,304	\$6.14	12.74
<b>Totals</b>		<b>3,738</b>	<b>42,536</b>	<b>558,274</b>	<b>\$7.17</b>	<b>13.16</b>



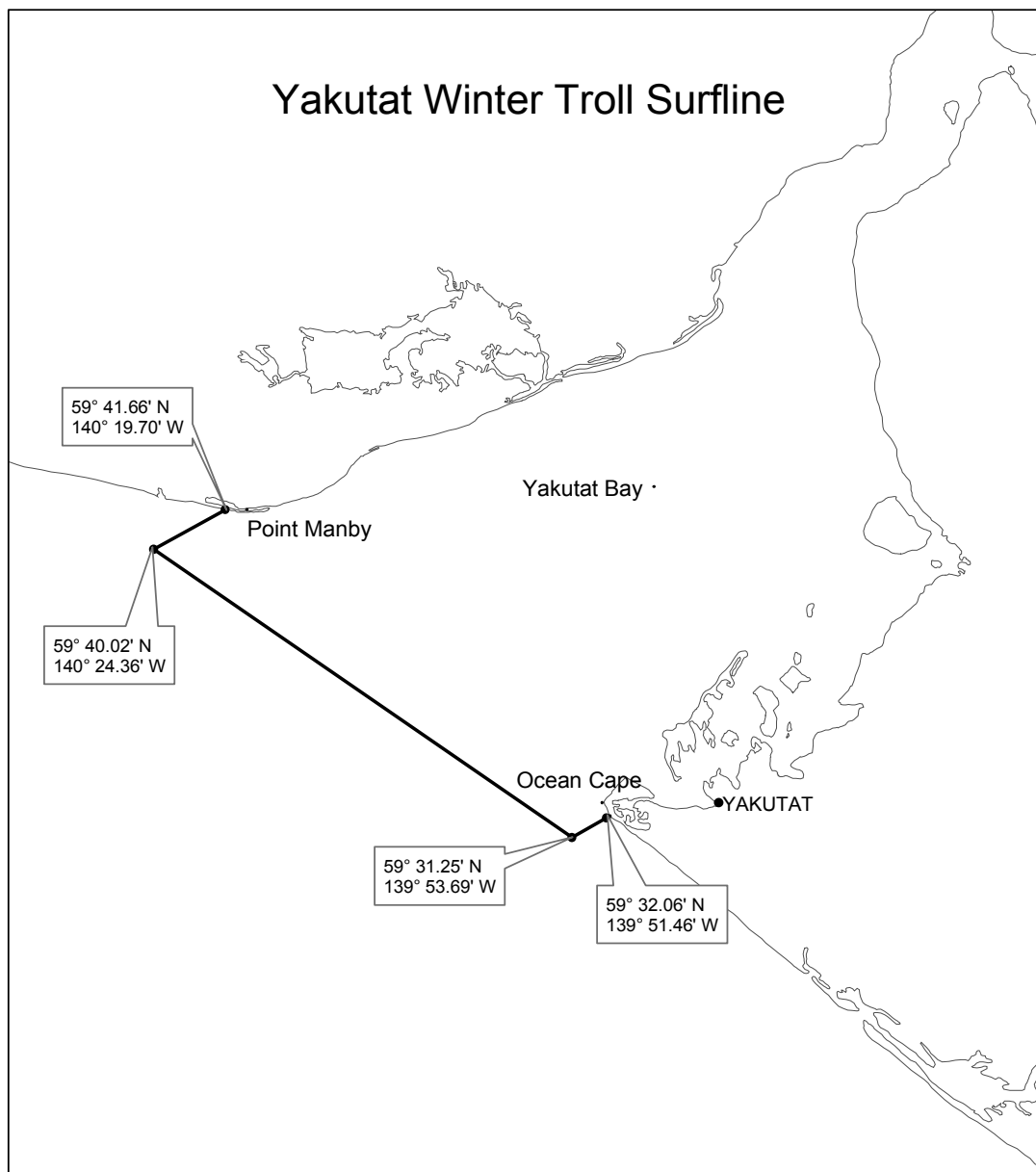
**Figure 1.**—Southeast Alaska/Yakutat winter troll fishery areas.

Note: For a full description of areas closed to winter trolling, see page 4 of this guide.

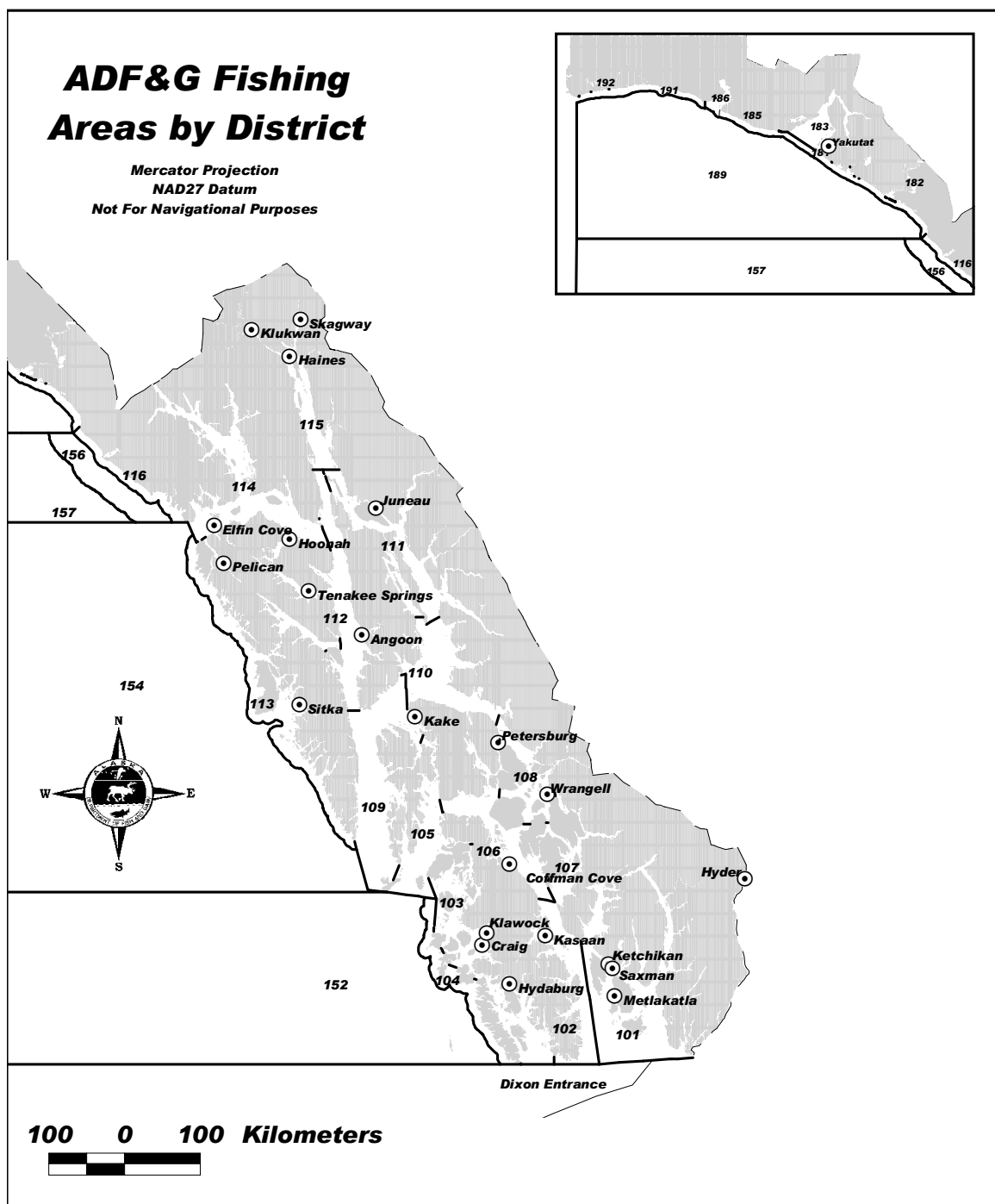


**Figure 2.**—Sitka area winter troll boundary line (surline).

Note: The Cape Edgecumbe Light coordinates are from the United States Coast Guard Light List, Vol. VI, 2010.

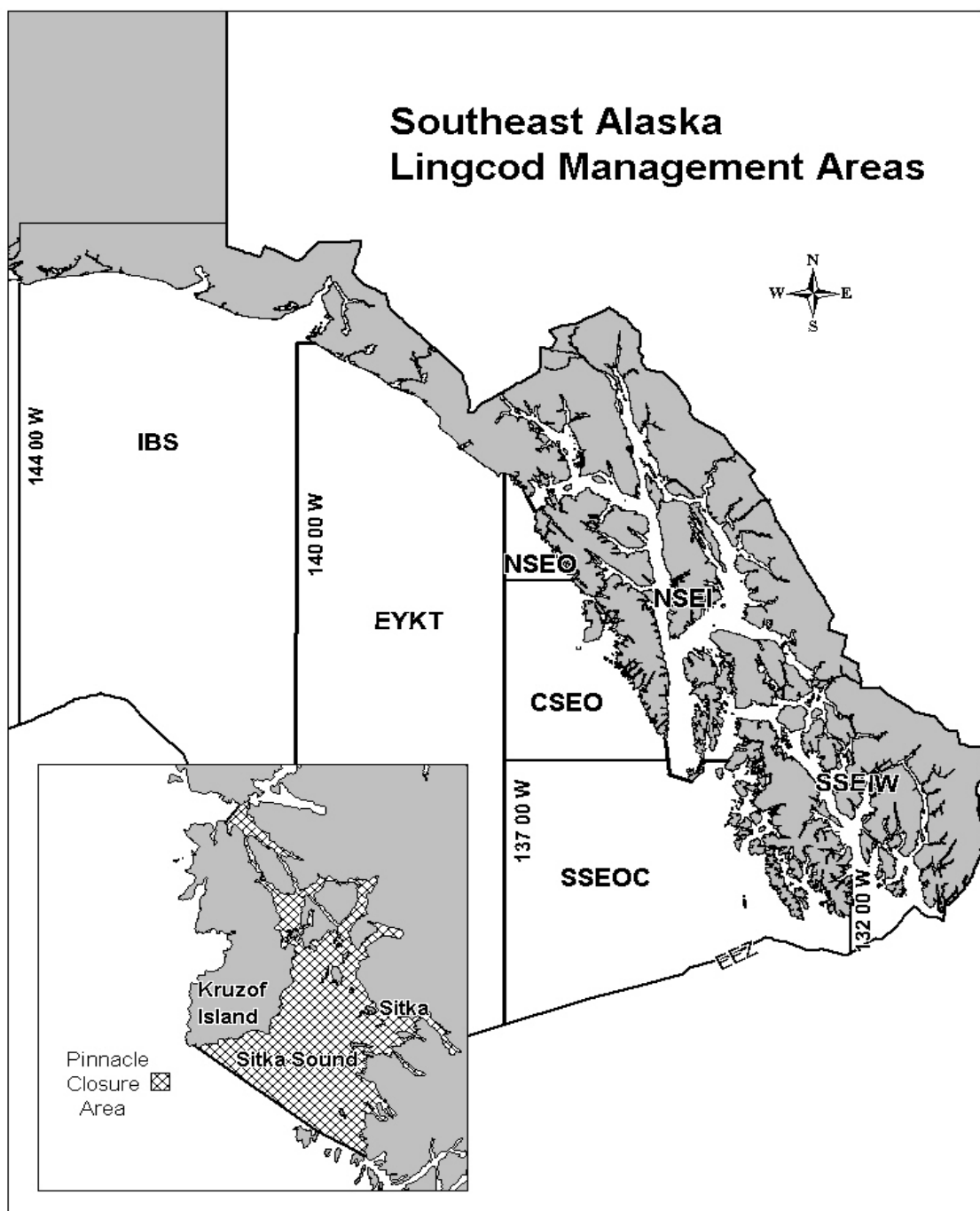


**Figure 3.**—Yakutat Bay winter troll boundary line (surfline).



**Figure 4.**—Southeast Alaska/Yakutat salmon fishing districts.





**Figure 5.**—Southeast Alaska lingcod management areas.

Note: All areas will close to lingcod retention on November 30, unless closed earlier by emergency order. See pages 5-7 of this guide for further regulations pertaining to groundfish retention.

## **ACKNOWLEDGEMENTS**

This report was compiled and written by the Southeast Alaska troll management staff, which includes Pattie Skannes (Regional Troll Management Biologist) and Grant Hagerman (Assistant Troll Management Biologist). Mike Vaughn (Groundfish Biologist) assisted with the groundfish regulation section of this report. Bill Davidson (Regional Management Biologist) edited the final document.