

**Annual Management Report for Groundfish Fisheries
in the Kodiak, Chignik, and South Alaska Peninsula
Areas, 2022**

by

Cassandra Whiteside

and

Annie Looman

December 2023

Alaska Department of Fish and Game

Divisions of Sport Fish and Commercial Fisheries



Symbols and Abbreviations

The following symbols and abbreviations, and others approved for the Système International d'Unités (SI), are used without definition in the following reports by the Divisions of Sport Fish and of Commercial Fisheries: Fishery Manuscripts, Fishery Data Series Reports, Fishery Management Reports, and Special Publications. All others, including deviations from definitions listed below, are noted in the text at first mention, as well as in the titles or footnotes of tables, and in figure or figure captions.

Weights and measures (metric)		General		Mathematics, statistics	
centimeter	cm	Alaska Administrative Code	AAC	all standard mathematical signs, symbols and abbreviations	
deciliter	dL	all commonly accepted abbreviations	e.g., Mr., Mrs., AM, PM, etc.	alternate hypothesis	H _A
gram	g	all commonly accepted professional titles	e.g., Dr., Ph.D., R.N., etc.	base of natural logarithm	e
hectare	ha			catch per unit effort	CPUE
kilogram	kg			coefficient of variation	CV
kilometer	km	at	@	common test statistics	(F, t, χ^2 , etc.)
liter	L			confidence interval	CI
meter	m			compass directions:	correlation coefficient
milliliter	mL	east	E	(multiple)	R
millimeter	mm	north	N	correlation coefficient (simple)	r
Weights and measures (English)		south	S	covariance	cov
cubic feet per second	ft ³ /s	west	W	degree (angular)	°
foot	ft	copyright	©	degrees of freedom	df
gallon	gal	corporate suffixes:		expected value	E
inch	in	Company	Co.	greater than	>
mile	mi	Corporation	Corp.	greater than or equal to	≥
nautical mile	nmi	Incorporated	Inc.	harvest per unit effort	HPUE
ounce	oz	Limited	Ltd.	less than	<
pound	lb	District of Columbia	D.C.	less than or equal to	≤
quart	qt	et alii (and others)	et al.	logarithm (natural)	ln
yard	yd	et cetera (and so forth)	etc.	logarithm (base 10)	log
Time and temperature		exempli gratia		logarithm (specify base)	log ₂ , etc.
day	d	(for example)	e.g.	minute (angular)	'
degrees Celsius	°C	Federal Information Code	FIC	not significant	NS
degrees Fahrenheit	°F	id est (that is)	i.e.	null hypothesis	H ₀
degrees kelvin	K	latitude or longitude	lat or long	percent	%
hour	h	monetary symbols		probability	P
minute	min	(U.S.)	\$, ¢	probability of a type I error	
second	s	months (tables and figures): first three letters	Jan,...,Dec	(rejection of the null hypothesis when true)	α
Physics and chemistry		registered trademark	®	probability of a type II error	
all atomic symbols		trademark	™	(acceptance of the null hypothesis when false)	β
alternating current	AC	United States		second (angular)	"
ampere	A	(adjective)	U.S.	standard deviation	SD
calorie	cal	United States of America (noun)	USA	standard error	SE
direct current	DC	U.S.C.	United States Code	variance	
hertz	Hz			population sample	Var var
horsepower	hp				
hydrogen ion activity (negative log of)	pH				
parts per million	ppm	U.S. state	use two-letter abbreviations		
parts per thousand	ppt, ‰		(e.g., AK, WA)		
volts	V				
watts	W				

FISHERY MANAGEMENT REPORT NO. 23-19

**ANNUAL MANAGEMENT REPORT FOR GROUND FISH FISHERIES IN
THE KODIAK, CHIGNIK, AND SOUTH ALASKA PENINSULA AREAS,
2022**

by
Cassandra Whiteside
and
Annie Looman
Alaska Department of Fish and Game, Division of Commercial Fisheries, Kodiak

Alaska Department of Fish and Game
Division of Sport Fish, Research and Technical Services
333 Raspberry Road, Anchorage, Alaska, 99518-1565

December 2023

The Fishery Management Reports series was established in 1989 by the Division of Sport Fish for the publication of an overview of management activities and goals in a specific geographic area and became a joint divisional series in 2004 with the Division of Commercial Fisheries. Fishery Management Reports are intended for fishery and other technical professionals, as well as lay persons. Fishery Management Reports are available through the Alaska State Library and on the Internet: <http://www.adfg.alaska.gov/sf/publications/>. This publication has undergone regional peer review.

Product names used in this publication are included for completeness and do not constitute product endorsement. The Alaska Department of Fish and Game does not endorse or recommend any specific company or their products.

*Cassandra Whiteside
and
Annie Looman
Alaska Department of Fish and Game, Division of Commercial Fisheries,
351 Research Court, Kodiak, AK 99615, USA*

This document should be cited as follows:

Whiteside, C., and A. Looman. 2023. Annual management report for groundfish fisheries in the Kodiak, Chignik, and South Alaska Peninsula Areas, 2022. Alaska Department of Fish and Game, Fishery Management Report No. 23-19, Anchorage.

The Alaska Department of Fish and Game (ADF&G) administers all programs and activities free from discrimination based on race, color, national origin, age, sex, religion, marital status, pregnancy, parenthood, or disability. The department administers all programs and activities in compliance with Title VI of the Civil Rights Act of 1964, Section 504 of the Rehabilitation Act of 1973, Title II of the Americans with Disabilities Act (ADA) of 1990, the Age Discrimination Act of 1975, and Title IX of the Education Amendments of 1972.

If you believe you have been discriminated against in any program, activity, or facility please write:

ADF&G ADA Coordinator, P.O. Box 115526, Juneau, AK 99811-5526

U.S. Fish and Wildlife Service, 4401 N. Fairfax Drive, MS 2042, Arlington, VA 22203

Office of Equal Opportunity, U.S. Department of the Interior, 1849 C Street NW MS 5230, Washington DC 20240

The department's ADA Coordinator can be reached via phone at the following numbers:

(VOICE) 907-465-6077, (Statewide Telecommunication Device for the Deaf) 1-800-478-3648,

(Juneau TDD) 907-465-3646, or (FAX) 907-465-6078

For information on alternative formats and questions on this publication, please contact:

ADF&G Division of Sport Fish, Research and Technical Services, 333 Raspberry Road, Anchorage AK 99518 (907) 267-2517

TABLE OF CONTENTS

	Page
LIST OF TABLES.....	ii
LIST OF FIGURES.....	iii
LIST OF APPENDICES	iii
ABSTRACT	1
INTRODUCTION.....	1
PACIFIC COD	2
Parallel Season.....	2
Background.....	2
2022 Parallel Pacific Cod Season Overview.....	3
Kodiak Area	3
Chignik Area	3
South Alaska Peninsula Area	3
State-Waters Season	4
Background.....	4
2022 State-Waters Pacific Cod Season Overview	4
Kodiak Area	4
Chignik Area	6
South Alaska Peninsula Area	7
Pacific Cod Harvest Monitoring.....	8
BLACK ROCKFISH.....	9
2022 Black Rockfish Overview	9
Kodiak Area	9
Chignik Area	10
South Alaska Peninsula Area	10
Black Rockfish Harvest Monitoring.....	10
LINGCOD	10
PARALLEL WALLEYE POLLOCK FISHERIES.....	10
REFERENCES CITED	12
TABLES AND FIGURES.....	13
APPENDIX A. FREQUENTLY USED ACRONYMS AND KEYWORDS.....	65
APPENDIX B. KODIAK, CHIGNIK, AND SOUTH ALASKA PENINSULA MANAGEMENT AREAS STATE-WATERS STATISTICAL AREAS FOR GROUND FISH.....	67

LIST OF TABLES

Table	Page
1. Kodiak, Chignik, and South Alaska Peninsula Areas groundfish emergency orders summary, 2022.	14
2. Top 30 species harvested, by weight in pounds, as reported on groundfish fish tickets, from state waters of Kodiak, Chignik, and South Alaska Peninsula groundfish management areas, 2022.....	15
3. Central Gulf of Alaska Management Area federal and state-waters Pacific cod harvest, in millions of pounds, 1990–2022.	16
4. Western Gulf of Alaska Management Area federal and state-waters Pacific cod harvest, in millions of pounds, 1990–2022.	17
5. Kodiak Area Pacific cod harvest, in pounds, by gear type, during parallel fisheries, 1997–2022.	18
6. Chignik Area Pacific cod harvest, in pounds, by gear type, during parallel fisheries, 1997–2022.	19
7. South Alaska Peninsula Area Pacific cod harvest, in pounds, by gear type, during parallel fisheries, 1997–2022.	20
8. Kodiak, Chignik, and South Alaska Peninsula Areas regulatory development for state-waters and parallel Pacific cod fisheries, 1996–2022.	21
9. Kodiak, Chignik, and South Alaska Peninsula Areas state-waters Pacific cod effort, guideline harvest level, harvest in pounds, and value, 2002–2022.	23
10. Kodiak Area state-waters Pacific cod guideline harvest level, effort, harvest in pounds, and value, by gear type, 1997–2022.	25
11. Pacific cod effort and harvest in pounds by statistical area, from the Kodiak Area state-waters season, 2022.	27
12. Kodiak Area state-waters Pacific cod fishery dates and management actions, by gear type, 1997–2022.	28
13. Chignik Area state-waters Pacific cod guideline harvest level, effort, harvest in pounds, and value, by gear type, 1997–2022.	32
14. Pacific cod effort and harvest in pounds by statistical area, from the Chignik Area state-waters season, 2022.	34
15. Chignik Area state-waters Pacific cod fishery dates and management actions, by gear type, 1997–2022.	35
16. South Alaska Peninsula Area state-waters Pacific cod guideline harvest level, effort, harvest in pounds, and value, by gear type, 1997–2022.	40
17. Pacific cod effort and harvest in pounds by statistical area from the South Alaska Peninsula Area state-waters season, 2022.	42
18. South Alaska Peninsula Area state-waters Pacific cod fishery dates and management actions, by gear type, 1997–2022.	43
19. Kodiak, Chignik, and South Alaska Peninsula Areas black rockfish regulatory development and management actions, 1997–2022.	47
20. Kodiak, Chignik, and South Alaska Peninsula Areas black rockfish guideline harvest level, harvest in pounds, and fishery closure date, by district, 2022.	48
21. Kodiak Area black rockfish jig effort, guideline harvest level, harvest in pounds, and value, 1990–2022.	49
22. Chignik Area black rockfish jig effort, guideline harvest level harvest in pounds, and value, 1990–2022.	50
23. South Alaska Peninsula Area Eastern District black rockfish jig effort, guideline harvest level, harvest in pounds, and value, 1990–2022.....	51
24. Kodiak, Chignik, and South Alaska Peninsula Areas lingcod harvest in pounds, by gear type, 1988–2022.	52
25. Central Gulf of Alaska and Western Gulf of Alaska walleye pollock fishery dates, 2018–2022.....	53
26. Central Gulf of Alaska walleye pollock effort and harvest, in millions of pounds, 1995–2022.....	54
27. Western Gulf of Alaska walleye pollock effort and harvest, in millions of pounds, 1995–2022.	55

LIST OF FIGURES

Figure	Page
1. Alaska Department of Fish and Game and National Marine Fisheries Service groundfish management areas.....	56
2. Kodiak Area state-waters Pacific cod harvest, in pounds, by statistical area, 2022.	57
3. South Alaska Peninsula Area state-waters Pacific cod harvest, in pounds, by statistical area, 2022.	58
4. Kodiak Area Pacific cod length frequency from state-waters fisheries, 2012–2022.....	59
5. Chignik Area Pacific cod length frequency from state-waters fisheries, 2012–2022.....	59
6. South Alaska Peninsula Area Pacific cod length frequency from state-waters fisheries, 2012–2022.....	60
7. Kodiak Area Pacific cod age composition from the state-waters fisheries, 2012–2022.....	60
8. Chignik Area Pacific cod age composition from the state-waters fisheries, 2012–2022.....	61
9. South Alaska Peninsula Area Pacific cod age composition from the state-waters fisheries, 2012–2022.....	61
10. Kodiak, Chignik, and South Alaska Peninsula black rockfish management areas and districts.....	62
11. Kodiak Area black rockfish harvest, in pounds, by statistical area, 2022.	63
12. Kodiak Area black rockfish length frequency from directed fisheries, 2012–2022.	64
13. Kodiak Area black rockfish age composition from directed fisheries, 2012–2022.....	64

LIST OF APPENDICES

Appendix	Page
A1. Frequently used acronyms and keywords.....	66
B1. Kodiak Management Area state-waters statistical areas for groundfish.....	68
B2. Chignik Management Area state-waters statistical areas for groundfish.....	69
B3. South Alaska Peninsula Management Area state-waters statistical areas for groundfish.....	70

ABSTRACT

This report summarizes 2022 harvest, effort, and management of commercial state-waters and parallel groundfish fisheries managed by the Alaska Department of Fish and Game (ADF&G) in the Kodiak, Chignik, and South Alaska Peninsula Areas. Reported harvest data were acquired from the ADF&G fish ticket database. Principal state-waters fisheries include Pacific cod *Gadus macrocephalus* and black rockfish *Sebastes melanops*. The 2022 harvest of Pacific cod during state-waters fisheries totaled 13.23 million pounds from 95 vessels, with an estimated exvessel value of \$6.35 million. Black rockfish harvest in Kodiak Area jig gear fisheries totaled 98,466 pounds from 9 vessels with an estimated exvessel value of \$98,466. No effort occurred for black rockfish in the Chignik Area or the South Alaska Peninsula Area Eastern District. During parallel fisheries, ADF&G adopts most season dates, bycatch limits, area closures, and allowable gear types established by the National Marine Fisheries Service (NMFS) for federal fisheries that occur in the adjacent exclusive economic zone. Walleye pollock *Gadus chalcogrammus* and Pacific cod are the predominant species harvested during parallel fisheries.

Keywords: Kodiak, Chignik, South Alaska Peninsula, groundfish, Pacific cod, black rockfish, walleye pollock, lingcod, dark rockfish, state waters, parallel, commercial fisheries, exvessel, trawl, pot, longline, jig, Annual Management Report

INTRODUCTION

This report provides an overview of commercial groundfish fisheries in the Kodiak, Chignik, and South Alaska Peninsula Areas and summarizes catch information and regulations that guide management of groundfish resources. These fisheries include Pacific cod *Gadus macrocephalus*, black rockfish *Sebastes melanops*, dark rockfish *Sebastes ciliatus*, lingcod *Ophiodon elongates*, and walleye pollock *Gadus chalcogrammus*. Fishery harvest data reported were acquired from the Alaska Department of Fish & Game (ADF&G) fish ticket database. Appendix A defines frequently used acronyms and keywords associated with groundfish fisheries.

Commercial groundfish fisheries inside state waters (0–3 nmi) are managed by ADF&G under regulations developed by the Alaska Board of Fisheries (BOF). Management authority for commercial groundfish fisheries in the exclusive economic zone (EEZ; 3–200 nmi) off Alaska, with the exception of exclusively state managed species (e.g., black rockfish), is delegated to National Marine Fisheries Service (NMFS) through the Magnuson-Stevens Fishery Conservation and Management Act (MSFCMA 2007). Federal commercial groundfish fisheries are prosecuted under guidelines developed by the North Pacific Fishery Management Council (NPFMC).

Several commercially important groundfish species managed by NMFS also occur inside state waters. To facilitate consistency between state and federal regulations for specific transboundary groundfish species, ADF&G issues an annual emergency order (EO), effective January 1, establishing parallel groundfish seasons in state waters, during which the state adopts most regulations of adjacent federal fisheries unless superseded by BOF regulations (Table 1).

State-waters seasons are independent of federal/parallel seasons. In the Kodiak, Chignik, and South Alaska Peninsula Areas, state-waters seasons for Pacific cod, lingcod, black rockfish, and dark rockfish are established by regulation. State-waters seasons for Pacific cod are prosecuted exclusively within state waters of Alaska (0–3 nmi), whereas ADF&G has management authority from shore to the 200 nautical mile boundary of the EEZ in the Gulf of Alaska (GOA) for lingcod, black rockfish, and dark rockfish. In 2022, 15 EOs were issued to regulate state-waters groundfish fisheries in Kodiak, Chignik, and South Alaska Peninsula Areas (Table 1).

During 2022, walleye pollock and Pacific cod were the primary species harvested from state waters in Kodiak, Chignik, and South Alaska Peninsula Areas (Table 2). In state waters, all

directed walleye pollock harvest occurred during parallel seasons, whereas Pacific cod were harvested during state-waters and parallel seasons.

PACIFIC COD

In the GOA, Pacific cod are managed as a single stock (Shimada and Kimura 1994) but are apportioned as acceptable biological catches (ABCs) among federal regulatory areas of Eastern Gulf of Alaska (EGOA), Central Gulf of Alaska (CGOA), and Western Gulf of Alaska (WGOA; Figure 1). The random effects model used for ABC area apportionments for the 2022 GOA Pacific cod stock assessment apportioned 60.2% to the CGOA, 30.3% to the WGOA, and 9.5% to the EGOA (Barbeaux et al. 2021). The Scientific and Statistical Committee (SSC) agreed to the apportionment scheme, noting the stair step employed in 2020 is no longer necessary (SSC 2021). The SSC, however, did not accept the recommended model in Barbeaux et al. (2021) for the stock assessment; the SSC recommended continuing to use the model that was used for the 2020 Pacific cod stock assessment (i.e., model 19.1), which resulted in higher 2022 and 2023 Pacific cod ABCs than those from the Barbeaux et al. (2021) recommended model (SSC 2021). In December 2021, the NPFMC approved the final 2022 and 2023 Gulf of Alaska groundfish specifications for ABCs as recommended by the SSC; therefore, the 2022 GOA Pacific cod ABC of 72.34 million pounds was apportioned 43.55 million pounds to the CGOA, 21.92 million pounds to the WGOA, and 6.87 million pounds to the EGOA.

Pacific cod ABCs are further apportioned between federal/parallel fisheries and state-waters fisheries. In the CGOA, federal/parallel fisheries receive 75% of the CGOA ABC as total allowable catch (TAC) and state-waters fisheries receive 25% of the CGOA ABC as guideline harvest level (GHL). In the WGOA, federal/parallel fisheries receive 70% of the WGOA ABC and state-waters fisheries receive 30% of the WGOA ABC. Federal/parallel TACs are further apportioned by season, gear type, and processing activity. During directed federal fisheries, NMFS allocated 60% of the TAC to the spring A season, and the remaining 40% of the TAC was made available during the fall B season. State-waters Pacific cod GHLs in the Kodiak, Chignik, and South Alaska Peninsula Areas are not apportioned into A and B seasons.

NMFS conducts an annual stock assessment to establish Pacific cod ABCs. The data as interpreted indicate that the stock remains at low levels; however, stronger 2018 recruitment and limited fishing mortality in 2020 and 2021 are projected to result in increased spawning biomass in 2022 and 2023 (Barbeaux et al. 2021; SSC 2021). The 2022 spawning biomass is estimated to be 29.6% of an unfished biomass, above the overfished determination level (i.e., 17.5%), and above the 20% threshold designed to protect forage for endangered Stellar sea lions; federal regulation prohibits directed Pacific cod fisheries if biomass falls below 20% (Barbeaux et al. 2021; SSC 2021). As a result, federal/parallel and state-waters fisheries were prosecuted in 2022.

PARALLEL SEASON

Background

ADF&G annually issues an EO establishing parallel Pacific cod seasons in state waters of Kodiak, Chignik, and South Alaska Peninsula Areas (EO 4-GF-01-22; Table 1). This EO adopts most federal fishing regulations including season dates, allowable gear types, area closures, bycatch limits, or other regulations the commissioner determines reasonably necessary to accommodate federal fishery management measures in state waters. Most NMFS area closures, including closures for Steller sea lion (SSL) protection, are in effect during parallel fisheries.

Federal seabird avoidance requirements are recognized by the state during parallel Pacific cod fisheries as are vessel monitoring system (VMS) and catch reporting requirements. Federal sector allocations based on processing activity are not recognized in parallel Pacific cod fisheries. State waters adjacent to federal waters open to a gear type, for either catcher–processor or catcher–vessel, are considered open in the parallel fishery for that same gear type regardless of processing activity.

2022 Parallel Pacific Cod Season Overview

The 2022 CGOA Pacific cod harvest, including federal, parallel, and state-waters seasons, totaled 35.65 million pounds, which was 82% of the CGOA ABC (Table 3). Approximately 39% of the CGOA total harvest was taken from state waters. Total Pacific cod harvest from the WGOA during 2022 was 17.27 million pounds, which was 79% of the WGOA ABC (Table 4). Approximately 38% of the total WGOA harvest was taken from state waters.

Kodiak Area

The 2022 Kodiak Area parallel pot gear A season was open from January 1 through February 16, and parallel pot gear B season was open from September 1 through December 31.

The parallel jig gear season opens 48 hours after the closure of the state-waters jig gear season. The state-waters jig fishery was open from January 1 through December 31; therefore, the parallel jig fishery did not open and no harvest occurred (Tables 5 and 12).

Harvest of Pacific cod by all gear types during the 2022 parallel fishery within the Kodiak Area totaled 3.23 million pounds (Table 5). Most Pacific cod were harvested using longline gear (46%) and pot gear (52%).

Chignik Area

The majority of the Chignik Area is located within the CGOA with a small portion located within the WGOA federal management area (Figure 1). The Chignik Area parallel season has separate dates according to location within federal management areas. For the Chignik Area located within the CGOA, the 2022 parallel pot gear A season was open from January 1 through February 16, and the parallel jig gear A season was open from January 1 through March 14. The parallel pot gear B season did not open because the state-waters rollover season did not close until December 31, and the parallel jig gear B season did not open because the state-waters season did not close until December 31. For the Chignik Area located within the WGOA, the parallel pot gear A season was open from January 1 through February 11, and the parallel jig gear A season was open from January 1 through March 14. The parallel pot gear B season did not open because the state-waters rollover season did not close until December 31, and the parallel jig gear B season did not open because the state-waters season did not close until December 31.

The 2022 Chignik Area parallel Pacific cod harvest of 11,780 pounds was harvested by vessels using longline (71%) and trawl gear (29%; Table 6). Chignik Area parallel harvest of Pacific cod was predominantly located in the CGOA, but some parallel harvest in the WGOA did occur.

South Alaska Peninsula Area

The 2022 South Alaska Peninsula Area parallel A season was open from January 1 through February 11 for pot gear and from January 1 through March 15 for jig gear. The WGOA parallel pot gear B season was open from September 1 through December 31, and the parallel jig gear

B season did not open because the state-waters season did not close until December 31. Harvest of Pacific cod by all gear types during the 2022 South Alaska Peninsula Area parallel season totaled 714,268 pounds (Table 7). Pot gear vessels harvested the largest proportion (91%), followed by trawl gear (5%) and longline gear vessels (4%), respectively.

STATE-WATERS SEASON

Background

State-waters Pacific cod seasons in the Kodiak, Chignik, and South Alaska Peninsula Areas began in 1997. The BOF developed state-waters Pacific cod management plans for each management area (Table 8). Allowable gear types (pot, mechanical jigging machine, and hand troll gear) are the same across management areas, whereas fishing season dates, vessel size limits, registration exclusivity, GHL allocations and rollover provisions, and gear storage regulations are unique to each management area.

Chignik and South Alaska Peninsula Area management plans specify gear limits of 60 pots or 5 mechanical jigging machines. The Kodiak Area management plan specifies gear limits of 60 pots or 6 mechanical jigging machines with a maximum of 30 hooks per line, and no more than 500 hooks in aggregate can be on board the vessel.

GHLs for each state-waters management area are set as a percentage of the annual federal Pacific cod ABC. State-waters GHLs were initially set at 15% of the ABC established for the federal CGOA or WGOA management areas and were structured to increase incrementally to 20% and then 25% of federal ABCs if harvest in any year exceeded 90% of the established state-waters GHL. By 2003, each management area achieved the maximum GHL increment, and GHLs were set at 25% of the WGOA ABC for the South Alaska Peninsula Area and 25% of the CGOA ABC divided among the Kodiak Area (12.5%), Chignik Area (8.75%), and Cook Inlet Area (3.75%). In 2014, the BOF increased the South Alaska Peninsula Area GHL to 30% of the WGOA ABC. GHLs for each state-waters management area are further apportioned between gear types. If a gear type GHL allocation will not be attained by the date specified in regulation, a rollover provision may allow all gear types the opportunity to harvest some or all of the remaining GHL.

2022 State-Waters Pacific Cod Season Overview

Approximately 13.23 million pounds of Pacific cod were harvested from Kodiak, Chignik, and South Alaska Peninsula Areas by 95 vessels during the 2022 state-waters seasons (Table 9). This was an 8% decrease in participation and a 24% increase in harvest compared to the 2021 state-waters season. Compared to the previous 5-years (2017–2021), 2022 participation was 7% above average and harvest was 12% above average (Table 9). Total 2022 state-waters seasons exvessel value was approximately \$6.35 million. The 2022 price per pound of \$0.48 is higher than the last 2 years and above the previous 5-year average of \$0.42 (Table 9).

Kodiak Area

The 2022 Kodiak Area GHL was 5.44 million pounds (Table 9). Pot and jig gear vessels were each allocated 50% of the total GHL, or 2.72 million pounds (Table 10). Total Pacific cod harvest from the 2022 Kodiak Area state-waters season was 4.91 million pounds taken by 50 vessels with an estimated exvessel value of \$2.36 million based on an average price of \$0.48 per pound (Table 9). Two vessels participated in both pot gear and jig gear fisheries

(Tables 9 and 10). Pacific cod were harvested from 26 statistical areas during the season (Table 11). Harvest was distributed around the Kodiak Archipelago; notable harvest occurred in Chiniak Bay (statistical area 525733), Outer Kiluida Bay (statistical area 525703), Uganik and Viekoda Bays (statistical area 535732), Outer Ugak Bay (statistical area 525701), and the westside of Raspberry Island and Malina Bay (statistical area 535803; Table 11, Figure 2, and Appendix B1).

Kodiak Pot Gear Season

The Kodiak Area state-waters pot gear season opens 7 days after closure of the federal CGOA pot gear A season. The 2022 federal CGOA pot gear A season closed February 16; therefore, the Kodiak Area state-waters Pacific cod pot gear season opened February 23 (Table 12).

A total of 16 vessels participated in the 2022 Kodiak Area state-waters pot gear season; 6 vessels were over 58 feet overall length (OAL), and 10 vessels were 58 feet OAL or less. This was an increase in the total number of participating vessels from the previous year (60% increase). Compared to the previous 5-years (2017–2021), 2022 participation was 14% above average (Table 10). The GHL allocation for pot gear vessels is 50% of the total state-waters GHL (2,721,579 pounds); however, pot gear vessels greater than 58 feet OAL are limited to 25% of the total state-waters GHL (1,360,789 pounds) before September 1. Fleetwide landings ranged from approximately 6,500 to 466,000 pounds per day and averaged 105,926 pounds per day on days when landings occurred. Individual vessel landings ranged from approximately 40 to 186,000 pounds with an average landing of 46,910 pounds. The pot gear season closed on March 8 for vessels greater than 58 feet OAL and on March 10 for vessels 58 feet OAL or less (Table 1). The pot gear season was open for 15 days and the GHL was achieved; a GHL rollover provision permitted a reopening to pot gear vessels of all sizes from April 1 to September 1 and additional harvest occurred (Tables 1 and 12). The total harvest by vessels operating pot gear was 3,283,698 pounds and the estimated exvessel value of the 2022 pot gear fishery was \$1.58 million based on an average exvessel price of \$0.48 per pound (Table 10).

Kodiak Jig Gear Season

The Kodiak Area state-waters Pacific cod season for vessels using jig gear opened January 1, 2022 (Table 12). There was a 20% decrease in participation compared to the 2021 season; compared to the previous 5-years (2017–2021), 2022 participation was 29% above average (Table 10). A total of 36 vessels participated in the 2022 Kodiak state-waters jig gear season, landing 1,629,439 pounds (60% of the jig GHL allocation; Table 10).

Peak harvest during the Kodiak jig gear season occurred March through June. During this time period, the number of landings per week ranged from 2 to 22. No landings occurred in August, September, or December, and very few landings occurred throughout the remainder of the year. Fleetwide landings ranged from approximately 200 to 91,000 pounds per day and averaged 20,519 pounds per day on days when landings occurred. Individual vessel landings ranged from approximately 400 to 37,000 pounds with an average landing of 8,532 pounds. The season closed on the regulatory closure date of December 31 (Table 12). The estimated exvessel value of the 2022 jig gear fishery was \$815,000 based on an average price of \$0.50 per pound (Table 10).

Allocation Rollover

Provisions in the *Kodiak Area Pacific Cod Management Plan* (5 AAC 28.467) permit additional harvest opportunity. If it is determined that the jig gear GHL allocation will not be taken by June 10, 50% of the remaining jig gear allocation, as of March 25, may be taken by either pot or jig gear beginning April 1. Through March 25, 2022, approximately 2.6 million pounds of the Kodiak Area state-waters Pacific cod jig gear GHL allocation remained unharvested. Therefore, approximately 1.3 million pounds of Pacific cod was available for harvest with either pot or jig gear, and 1.3 million pounds of the jig gear allocation remained exclusive to jig gear participants (Table 1). Three pot gear vessels participated in the allocation rollover and harvested 534,436 pounds of Pacific cod. The state-waters pot gear season closed on September 1 to allow the parallel pot gear B season to open on September 1 (Table 1).

If it is determined that the GHL will not be attained by the regulatory closure on December 31, the management plan allows 100% of unharvested state-waters GHL to be taken by either pot or jig gear after closure of the federal CGOA pot gear B season. The federal CGOA pot gear B season remained open until the regulatory closure of December 31; therefore, an additional allocation rollover did not occur. The season remained open to jig gear until the regulatory closure date; however, no harvest occurred after October 3.

Chignik Area

The 2022 Chignik Area GHL was 3.81 million pounds (Table 9). Vessels using pot gear were allocated 90% of the GHL (3.43 million pounds), and vessels using jig gear were allocated 10% (381,021 pounds; Table 13). Total Pacific cod harvest from the 2022 Chignik Area state-waters season was 2,499,579 pounds (66% of the GHL) taken by 4 vessels, with an estimated exvessel value of \$1.10 million based on an average price of \$0.44 per pound (Table 9). Harvest occurred in 4 statistical areas during the 2022 state-waters season. Although a large portion of statistical area level harvest data are confidential, 38% of the harvest occurred near Cape Kumlik and Sutwik Island (statistical area 575635; Table 14 and Appendix B2).

Chignik Pot Gear Season

The Chignik Area state-waters pot gear season opens March 1 or 7 days after closure of the federal CGOA pot gear A season, whichever is later. The 2022 federal CGOA pot gear A season closed February 16; therefore, the Chignik Area state-waters Pacific cod pot gear season opened March 1 (Table 15).

A total of 4 vessels participated in the 2022 Chignik Area state-waters pot gear season, which was the same amount of participation as the previous year (Table 13). All effort and harvest occurred during March and April. Fleetwide landings ranged from approximately 20,000 to 247,000 pounds per day and averaged 119,000 pounds per day on days when landings occurred. Individual vessel landings ranged from approximately 8,000 to 125,000 pounds with an average landing of 7,801 pounds. The season closed on the regulatory closure date of December 31; 73% of the pot gear GHL was harvested (Tables 13 and 15).

Chignik Jig Gear Season

The 2022 Chignik Area state-waters jig gear season opened by regulation on March 15 and closed on December 31 (Table 15). No vessels participated in the 2022 Chignik Area directed jig gear season (Table 13).

Allocation Rollover

Provisions in the *Chignik Area Pacific Cod Management Plan* (5 AAC 28.537) permit additional harvest opportunity if ADF&G determines the GHLL will not be attained by the regulatory closure date. Beginning August 15, the management plan allows unharvested GHLL to be taken by either pot or jig gear and for gear limits to be removed. Additionally, the management plan allows unharvested GHLL to be taken by a vessel of any size after October 30. In 2022, the rollover fishery was open from August 15 through December 31 without gear restrictions and from November 3 through December 31 without vessel size restrictions; however, no harvest occurred (Tables 1 and 15).

South Alaska Peninsula Area

The 2022 South Alaska Peninsula Area GHLL was 6.58 million pounds (Table 9). Vessels using pot gear were allocated 85% of the total GHLL (5.59 million pounds), and vessels using jig gear were allocated 15% of the GHLL (986,316 pounds; Table 16). The 2022 total harvest of 5.81 million pounds (88% of the GHLL) was taken by 41 vessels with an estimated exvessel value of \$2.73 million based on an average exvessel price of \$0.47 per pound (Table 9). Harvest occurred in 19 statistical areas with notable harvests include south of Ikatan Peninsula (statistical area 635434), the west side of Nagai Island (statistical area 605502), and near Unga and Popof Islands (statistical area 605504; Table 17, Figure 3, and Appendix B3).

South Alaska Peninsula Pot Gear Season

Unless delayed by weather, the state-waters pot gear season opens March 7 or 7 days after the close of the federal WGOA pot gear season, whichever is later. The 2022 federal WGOA pot gear A season closed February 11 and weather was not a factor. Therefore, the South Alaska Peninsula Area state-waters Pacific cod pot gear season opened as scheduled on March 7 (Table 18).

A total of 31 vessels participated in the 2022 South Alaska Peninsula Area state-waters pot gear season, which was an increase in participation from the previous 4 years (2018–2021; Table 16). Fleetwide landings ranged from approximately 18,000 to 911,000 pounds per day and averaged 481,530 pounds per day on days when landings occurred. Individual vessel landings ranged from approximately 1,000 to 123,000 pounds, with an average landing of 40,434 pounds. Harvest at the time of the pot gear season closure on March 16 was 5.30 million pounds, approximately 95% of the pot gear GHLL allocation (Table 16). The pot gear season was open for 10 days (Table 18). The estimated exvessel value of the pot gear fishery was \$2.49 million based on an average price of \$0.47 per pound (Table 16).

South Alaska Peninsula Jig Gear Season

The South Alaska Peninsula Area state-waters Pacific cod season for vessels using jig gear opens 48 hours after closure of the federal Western Gulf of Alaska (WGOA) jig gear sector A season or March 15 if the WGOA federal jig gear A season has not closed. Through March 8, 2022, 100% of the federal/parallel WGOA jig gear A-season allocation remained unharvested. Based on effort and harvest rate, it appeared unlikely that the federal/parallel WGOA jig gear A season would close with sufficient time remaining to fully harvest the state-waters jig gear GHLL allocation prior to the regulatory closure on December 31. Therefore, the South Alaska Peninsula Area parallel Pacific cod jig gear season was closed at 11:59 AM on March 15, 2022, and the

South Alaska Peninsula Area state-waters Pacific cod jig gear season was immediately opened at 12:00 noon March 15, 2022 (Table 18).

A total of 10 vessels participated in the 2022 South Alaska Peninsula state-waters jig gear season, which was a 44% decrease in participation from the previous year; compared to the previous 5-years (2017–2021), 2022 participation was 38% below average. The 2022 season jig gear harvest was 516,879 pounds, 52% of the jig gear GHL allocation (Table 16). Fleetwide landings ranged from approximately 300 to 54,000 pounds per day and averaged 13,000 pounds per day on days when landings occurred. Individual vessel landings ranged from approximately 300 to 34,000 pounds, with an average landing of 9,398 pounds. The jig gear season closed on the regulatory closure date of December 31 (Table 18). The estimated exvessel value of the 2022 jig gear fishery was \$248,000 based on an average price of \$0.48 per pound (Table 16).

Allocation Rollover

Provisions in the *South Alaska Peninsula Area Pacific Cod Management Plan* (5 AAC 28.577) permit additional harvest opportunity if ADF&G determines the GHL will not be attained by the regulatory closure date of December 31. The management plan allows unharvested state-waters GHL to be taken by either pot or jig gear after closure of the federal WGOA pot gear B season. The federal WGOA pot gear B season remained open until the regulatory closure of December 31; therefore, no allocation rollover occurred during the 2022 season. The state-waters season remained open to jig gear until the regulatory closure date; however, no harvest occurred after October 26.

Pacific Cod Harvest Monitoring

During the 2022 Pacific cod seasons, daily harvest reports were obtained from vessel operators using pot gear. Harvest reports included daily number of pots pulled, pounds retained, and fishing location for each vessel. Processor and vessel catch reports were subsequently referenced against landing data derived from the Interagency Electronic Reporting System (eLandings) to track daily catch and forecast harvests.

Dockside sampling was conducted in the port of Kodiak throughout the pot and jig gear seasons, and in King Cove and Sand Point during the South Alaska Peninsula Area pot gear season. Pacific cod harvested in the Chignik Area were opportunistically sampled if those fish were landed in Kodiak or Sand Point. Samplers also collected data on fish length, weight, sex, age, and reproductive status. Sampling goals include 500 otolith samples for each gear type (i.e., pot and jig) for the Kodiak Area, and 500 otolith samples for combined gear types per area for Chignik and South Alaska Peninsula Areas.

During 2022, sampling staff in Kodiak and Sand Point conducted 41 skipper interviews and collected biological samples from 79 deliveries. Samplers collected 7,717 fish lengths, 2,045 individual fish weights, extracted 2,000 otolith pairs for age determination, and made 2,045 observations of sex and maturity.

In 2022, average length of sampled Pacific cod in the Kodiak Area (68 cm), Chignik Area (67 cm), and South Alaska Peninsula Area (67 cm) were greater than the 10-year averages (63 cm, 65 cm, and 66 cm, respectively; Figures 4–6).

The age of Pacific cod sampled in 2022 from all areas ranged from 3 to 11 years, whereas the recent 10-year averages ranged between age 2 to 12 years (Figures 7–9). The average age of 6 years is consistent with the recent 10-year average for the Kodiak Area; however, the

distribution of ages in 2022 show less age-4 and -5 and more age-6 and -7 fish than the 10-year average (Figure 7). The average age of 6 years is consistent with the recent 10-year average for the Chignik Area; however, the distribution of ages is narrower in 2022 than the 10-year average with less age-5 and -8 and more age-6 and -7 fish (Figure 8). The average age of 6 years is consistent with the recent 10-year average for the South Alaska Peninsula Area; however, the distribution of ages in 2022 show less age-7 fish than the 10-year average (Figure 9).

BLACK ROCKFISH

In 1998, ADF&G assumed management authority for black rockfish within the EEZ of the GOA. Beginning that year, ADF&G assigned GHGs to state groundfish management areas within the GOA to better distribute effort (Figure 10). Since 2008, the BOF has provided further structure to black rockfish fishery regulations through registration requirements, trip limits, gear limits, and bycatch limits (Table 19).

The Kodiak Area is divided into 7 districts: Afognak, Northeast, Eastside, Southeast, Southwest, Westside, and Mainland. The Chignik Area is divided into 3 districts: Mitrofanina, Chignik Bay, and Sutwik Island. The South Alaska Peninsula Area is divided into the Eastern and Western Districts; the Western District is located west of Scotch Cap light and is managed by ADF&G staff in Dutch Harbor (Figure 10). ADF&G staff in Kodiak annually establish GHGs for the South Alaska Peninsula Eastern District, the Chignik Area, and 5 districts of the Kodiak Area. Two districts in the Kodiak Area, Southwest and Mainland Districts, only allow harvest of black rockfish as bycatch in other fisheries. In the Chignik Area, there are no district GHGs but rather an area GHG with district harvest caps (Table 20).

Mechanical jigging machine and hand troll gear are the only legal gear types in the directed black rockfish fishery. All black rockfish harvested by jig gear, either through directed effort or as bycatch to other jig gear fisheries (i.e., Pacific cod or dusky rockfish *Sebastes variabilis*), accrue against area or district GHGs. Black rockfish bycatch harvest from non-jig gear fisheries (i.e., trawl, longline, etc.) does not accrue against area or district GHGs. Districts are individually managed and closed to directed fishing upon achieving the district GHG or district harvest cap. Additionally, individual area or district bycatch limits may be reduced inseason to prevent exceeding GHGs.

2022 Black Rockfish Overview

The black rockfish fishery in the Kodiak Area, Chignik Area, and South Alaska Peninsula Eastern District opened January 1, 2022. The directed fishery was closed in 3 districts in the Kodiak Area before the regulatory closure date when GHGs were attained; GHGs were not fully harvested in 2 districts of the Kodiak Area, Chignik Area, or South Alaska Peninsula Eastern District (Table 20).

Kodiak Area

Nine vessels harvested a total of 98,466 pounds of the 120,000-pound GHG during the 2022 Kodiak Area black rockfish fishery (82% of the GHG; Table 21, Figure 11). The majority of harvest occurred during the directed fishery, and approximately 13% of total harvest was taken as bycatch to other jig gear fisheries (Table 20). Directed harvest in the Afognak, Northeast, Eastside, Southeast, and Westside Districts occurred from January through September with an average of 3 directed trips each month. The estimated exvessel value of the 2022 black rockfish fishery was approximately \$98,000 based on an average price of \$1.00 per pound (Table 21).

Chignik Area

The 2022 Chignik Area black rockfish GHL was 100,000 pounds. No vessels participated, and no harvest occurred (Table 22).

South Alaska Peninsula Area

The 2022 South Alaska Peninsula Area black rockfish GHL was 75,000 pounds. No vessels participated, and no harvest occurred (Table 23).

Black Rockfish Harvest Monitoring

Black rockfish harvest is monitored through fish ticket records, district vessel registrations, mandatory directed fishery logbooks, and dockside sampling. Information collected by dockside samplers includes fish length, weight, sex, age, and reproductive status. The 2022 black rockfish dockside data collection was primarily focused on the Kodiak Area due to limited availability of dockside staff in the Chignik and South Alaska Peninsula Areas.

During 2022, dockside sampling staff in Kodiak collected biological samples from 19 deliveries from the Kodiak Area. Samplers collected 1,996 fish lengths and 1,010 individual fish weights, extracted 1,010 otolith pairs for age determination, and made 1,010 observations of sex and maturity.

Black rockfish sampled from the Kodiak Area during 2022 averaged 43 cm in length, smaller than the recent 10-year average of 46 cm; fish length frequencies peak at 42 cm with 52% of fish sampled between 40 cm and 44 cm in length (Figure 12). A large cohort of small black rockfish has been observed since 2015, signaling the influx of a strong year class into the fishery. Sampled ages ranged from 6 to 47 years, with several predominant age classes (8, 9, and 10) in the catch making up 89% of the samples (Figure 13). Average age of sampled black rockfish in the Kodiak Area was 10 years, younger than the 10-year average of 16 years (Figure 13).

LINGCOD

Commercial regulations in Kodiak and Chignik Areas prohibit retention of lingcod prior to July 1 and require retained lingcod to be a minimum of 35 inches in total length. These regulations buffer against commercial exploitation during nest-guarding and ensure only mature fish are harvested. The South Alaska Peninsula Area is believed to be near the western limit of lingcod distribution (Mecklenburg et al. 2002) and harvests are uncommon; therefore, seasonal retention and size limit regulations are unnecessary.

Since 1988, harvests of lingcod in the Kodiak, Chignik, and South Alaska Peninsula Areas have generally remained below 100,000 pounds annually. Although jig and hand troll gear may be used to target lingcod, most harvest occurs as bycatch in other commercial groundfish fisheries. The 2022 lingcod harvest in the Kodiak, Chignik, and South Alaska Peninsula Areas was 39,203 pounds (Table 24).

PARALLEL WALLEYE POLLOCK FISHERIES

State waters are opened for parallel walleye pollock seasons concurrent with adjacent federal seasons. Prior to the 2021 season, annual harvest limits were allocated across 4 seasons (i.e., A, B, C, and D seasons). Beginning in 2021, the CGOA and WGOA trawl catcher–vessel pollock fishery A and B seasons were combined into a single season and redesignated as the A season, and the C and D seasons were combined into a single season and redesignated as the B season

(50 CFR § 679; NOAA 2020). Additionally, the opening date of the redesignated pollock B season was changed from August 25 to September 1. In some years and areas, directed fishing for pollock was prohibited to prevent exceeding the TAC, or more than one opening occurred within a season to ensure the full seasonal allocation was harvested (Table 25). Walleye pollock were primarily harvested by vessels using trawl gear.

The 2022 retained walleye pollock harvest totaled 218.19 million pounds in the CGOA and 51.24 million pounds in the WGOA (Tables 26 and 27). Approximately 8% (18.36 million pounds) of the total 2022 CGOA walleye pollock harvest and 29% (14.79 million pounds) of the total 2022 WGOA harvest occurred in state waters.

REFERENCES CITED

- Barbeaux, S., B. Ferriss, B. Laurel, M. Litzow, S. McDermott, J. Nielsen, W. Palsson, K. Shotwell, I. Spies, and M. Wang, 2021. Assessment of the Pacific cod stock in the Gulf of Alaska. [In] Plan team for the groundfish fisheries of the Gulf of Alaska (compiler). Stock assessment and fishery evaluation report for the groundfish resources of the Gulf of Alaska. North Pacific Fishery Management Council, Anchorage.
- National Oceanic and Atmospheric Administration (NOAA). 2020. Fisheries of the Exclusive Economic Zone off Alaska; modifying seasonal allocations of pollock and Pacific cod for trawl catcher vessels in the Central and Western Gulf of Alaska. Federal Register Volume 85(12):38093. <https://www.federalregister.gov/documents/2020/06/25/2020-12453/fisheries-of-the-exclusive-economic-zone-off-alaska-modifying-seasonal-allocations-of-pollock-and> (Accessed 10/18/2023).
- Magnuson–Stevens Fishery Conservation and Management Act (MSFCMA). 2007. Magnuson–Stevens Fishery Conservation and Management Act as amended through January 12, 2007. U.S. Department of Commerce, NOAA Technical Memorandum.
- Mecklenburg, W., T. A. Mecklenburg, and L. K. Thorsteinson. 2002. Fishes of Alaska. American Fisheries Society, Bethesda, Maryland.
- Shimada, A. M., and D. K. Kimura. 1994. Seasonal movements of Pacific cod (*Gadus macrocephalus*) in the eastern Bering Sea and adjacent waters based on tag-recapture data. Fishery Bulletin 92:800–816.
- Scientific and Statistical Committee (SSC). 2021. Scientific and Statistical Committee final report to the North Pacific Fishery Management Council. SSC, Anchorage.

TABLES AND FIGURES

Table 1.—Kodiak, Chignik, and South Alaska Peninsula Areas groundfish emergency orders summary, 2022.

Emergency order	Effective date	Explanation
4-GF-01-22	January 1, 2022	Established parallel commercial groundfish fishing seasons and bycatch limits in the Kodiak, Chignik, South Alaska Peninsula, and Bering Sea-Aleutian Islands Areas
4-GF-04-22	March 7, 2022	Opened South Alaska Peninsula Area state-waters Pacific cod season to pot gear
4-GF-05-22	February 23, 2022	Opened Kodiak Area state-waters Pacific cod season to pot gear
4-GF-06-22	March 1, 2022	Opened Chignik Area state-waters Pacific cod season to pot gear
4-GF-07-22	March 8, 2022	Closed Kodiak Area state-waters Pacific cod season to vessels greater than 58 feet to pot gear
4-GF-08-22	March 8, 2022	Closed directed black rockfish fishery and reduced black rockfish bycatch allowance from 20% to 5% for vessels using jig gear in the Northeast District of the Kodiak Area
4-GF-09-22	March 15, 2022	Opened South Alaska Peninsula Area state-waters Pacific cod season to jig gear
4-GF-10-22	March 10, 2022	Closed Kodiak Area state-waters Pacific cod season to pot gear
4-GF-11-22	March 16, 2022	Closed South Alaska Peninsula Area state-waters Pacific cod season to pot gear
4-GF-12-22	April 1, 2022	Reopened Kodiak Area state-waters Pacific cod season to pot gear
4-GF-13-22	August 15, 2022	Removed gear limits and the harvest allocation between pot and jig gear for the remainder of the Chignik Area state-waters Pacific cod season
4-GF-15-22	August 15, 2022	Increased trip limit from 5,000 pounds to 7,000 pounds for vessels targeting black rockfish in the Southeast and Westside Districts of the Kodiak Area
4-GF-16-22	September 1, 2022	Closed Kodiak Area state-waters Pacific cod season to pot gear
4-GF-17-22	September 6, 2022	Closed directed black rockfish fishery and reduced black rockfish bycatch allowance from 20% to 5% for vessels using jig gear in the Afognak and Eastside Districts of the Kodiak Area
4-GF-19-22	November 3, 2022	Removed vessel size limits for the remainder of the Chignik Area state-waters Pacific cod season

Notes: Omitted emergency orders (e.g., 4-GF-02-22) enacted for management areas outside of Kodiak, Chignik, and South Alaska Peninsula.

Table 2.—Top 30 species harvested, by weight in pounds, as reported on groundfish fish tickets, from state waters of Kodiak, Chignik, and South Alaska Peninsula (SAP) groundfish management areas, 2022.

Species	Kodiak	Chignik	SAP	Total
Walleye pollock	17,489,197	873,751	14,794,097	33,157,044
Pacific cod	8,133,178	2,511,359	6,533,566	17,178,102
Pacific halibut	1,860,799	213,430	822,976	2,897,205
Squid	794,472	2,916	162	797,549
Arrowtooth flounder	172,824	8,934	299,973	481,730
Black rockfish	110,618	CF	474	111,092
Herring bycatch	81,337	CF	13	81,350
Pacific ocean perch	45,591	1,702	18,492	65,785
Flathead sole	12,720	543	26,835	40,098
Eulachon	31,922	363	1,747	34,032
Big skate	29,462	0	599	30,061
Longnose skate	23,042	0	CF	23,042
Yelloweye rockfish	12,218	1,353	8,608	22,180
Octopus spp.	14,914	0	614	15,528
Sablefish	12,949	132	1,516	14,597
Chinook salmon	7,440	1,688	3,344	12,472
Dusky rockfish	9,624	29	296	9,949
Rougheye rockfish	5,040	CF	894	5,935
Dark rockfish	3,715	0	CF	3,715
Northern rockfish	CF	0	CF	3,216
Capelin	CF	0	CF	3,040
Salmon shark	0	0	2,649	2,649
Chum salmon	2,023	CF	203	2,226
Rex sole	1,497	97	646	2,240
Spiny dogfish	1,174	CF	802	1,976
Lingcod	1,824	CF	0	1,824
Rock sole	1,502	61	237	1,801
Skate spp.	982	CF	549	1,531
Shortraker rockfish	995	236	CF	1,232
Grenadier	508	CF	0	508

Notes: Weights reported in whole fish pounds. Discards at sea excluded. CF = confidential; data are confidential when fewer than 3 vessels participated. Total fish pounds do not include confidential data except total fish pounds for northern rockfish and capelin are not confidential.

Table 3.—Central Gulf of Alaska Management Area federal and state-waters Pacific cod harvest, in millions of pounds, 1990–2022.

Year	Federal waters		State waters		Total harvest	ABC	Discards at sea
	Harvest	% of Total	Harvest	% of Total			
1990	79.79	87.1	11.82	12.9	91.61	130.95	0.58
1991	81.24	80.6	19.55	19.4	100.79	106.48	0.51
1992	73.12	81.6	16.53	18.4	89.65	85.40	0.46
1993	60.31	83.9	11.60	16.1	71.91	77.50	0.66
1994	50.28	79.6	12.89	20.4	63.16	68.89	0.81
1995	72.84	77.0	21.76	23.0	94.60	100.69	0.79
1996	71.93	81.1	16.76	18.9	88.70	94.58	3.22
1997	76.64	75.7	24.59	24.3	101.24	113.20	1.83
1998	72.63	74.5	24.90	25.5	97.53	108.20	0.39
1999	71.03	67.6	34.08	32.4	105.11	117.22	0.17
2000	56.32	72.2	21.71	27.8	78.03	96.01	0.45
2001	50.00	78.0	14.08	22.0	64.08	85.20	0.80
2002	42.44	70.0	18.18	30.0	60.62	69.84	1.11
2003	41.97	67.6	20.14	32.4	62.11	64.02	0.99
2004	47.26	66.1	24.19	33.9	71.45	78.93	0.49
2005	38.94	61.9	24.00	38.1	62.94	73.01	0.24
2006	37.21	62.5	22.29	37.5	59.50	83.49	0.14
2007	43.58	65.4	22.99	34.6	66.57	83.49	0.41
2008	45.21	63.6	25.84	36.4	71.05	83.56	1.16
2009	35.33	59.9	23.68	40.1	59.02	69.50	1.23
2010	63.34	63.9	35.74	36.1	99.08	108.10	0.94
2011	66.87	59.9	44.86	40.1	111.73	118.64	0.48
2012	67.86	58.8	47.51	41.2	115.38	125.53	0.44
2013	54.64	67.0	26.85	33.0	81.49	108.66	0.88
2014	65.95	64.8	35.77	35.2	101.72	117.07	2.62
2015	58.61	57.9	42.64	42.1	101.26	135.19	1.14
2016	33.81	46.4	39.05	53.6	72.86	108.71	0.14
2017	26.41	59.2	18.20	40.8	44.61	97.40	0.11
2018	9.68	64.9	5.25	35.1	14.93	17.90	0.30
2019	9.29	60.5	6.07	39.5	15.36	16.90	0.72
2020	4.76	60.1	3.16	39.9	7.92	18.65	1.52
2021	14.48	59.4	9.91	40.6	24.39	30.11	0.91
2022	21.85	61.3	13.80	38.7	35.65	43.55	0.90

Notes: Weights reported in whole fish pounds. Discards at sea excluded from all columns except the *Discards at sea* column. State and federal harvests may not add to total due to rounding. ABC = Acceptable Biological Catch.

Table 4.—Western Gulf of Alaska Management Area federal and state-waters Pacific cod harvest, in millions of pounds, 1990–2022.

Year	Federal waters		State waters		Total harvest	ABC	Discards at sea
	Harvest	% of Total	Harvest	% of Total			
1990	72.20	84.6	13.13	15.4	85.33	65.48	0.74
1991	71.95	94.4	4.29	5.6	76.24	56.67	0.32
1992	59.73	82.0	13.15	18.0	72.87	51.80	0.74
1993	37.90	95.3	1.88	4.7	39.78	41.25	0.18
1994	24.88	77.3	7.32	22.7	32.20	36.67	0.15
1995	35.68	79.9	8.99	20.1	44.67	44.24	0.20
1996	35.28	73.2	12.92	26.8	48.20	41.56	0.29
1997	47.34	70.8	19.55	29.2	66.88	62.89	0.37
1998	39.98	68.9	18.06	31.1	58.04	60.11	0.08
1999	39.73	65.2	21.16	34.8	60.90	65.12	0.04
2000	33.73	54.7	27.90	45.3	61.63	60.64	0.07
2001	23.02	53.5	19.97	46.5	42.99	53.81	0.03
2002	26.32	55.4	21.22	44.6	47.54	49.52	0.07
2003	17.55	40.4	25.93	59.6	43.48	45.40	0.07
2004	17.11	37.8	28.16	62.2	45.27	49.85	0.05
2005	16.49	42.5	22.29	57.5	38.77	46.11	0.05
2006	11.23	28.8	27.74	71.2	38.96	59.21	0.04
2007	15.83	41.6	22.31	58.4	38.14	59.21	0.05
2008	21.53	50.1	21.47	49.9	43.00	57.17	0.06
2009	17.11	42.4	23.24	57.6	40.35	47.55	0.05
2010	26.00	44.0	33.16	56.0	59.16	61.03	0.36
2011	28.42	43.7	36.63	56.3	65.05	66.98	0.10
2012	30.93	54.7	25.59	45.3	56.53	61.80	0.07
2013	31.37	55.2	25.41	44.8	56.78	62.35	0.12
2014	32.92	49.0	34.24	51.0	67.16	72.19	0.08
2015	28.75	46.0	33.77	54.0	62.52	85.32	0.14
2016	27.69	45.3	33.49	54.7	61.18	89.29	0.05
2017	30.83	54.0	26.24	46.0	57.07	80.01	0.03
2018	9.37	58.0	6.78	42.0	16.15	17.82	0.08
2019	9.13	57.9	6.65	42.1	15.79	16.83	0.09
2020	0.32	13.0	2.14	87.0	2.46	10.90	0.01
2021	7.32	52.5	6.62	47.5	13.94	17.61	0.03
2022	10.74	62.2	6.53	37.8	17.27	21.92	0.01

Notes: Weights reported in whole fish pounds. Discards at sea excluded from all columns except the *Discards at sea* column. State and federal harvests may not add to total due to rounding. ABC = Acceptable Biological Catch.

Table 5.—Kodiak Area Pacific cod harvest, in pounds, by gear type, during parallel fisheries, 1997–2022.

Year	Gear type				Total
	Pot	Longline	Trawl	Jig	
1997	8,311,893	1,894,214	857,688	CF	11,063,795
1998	4,998,323	2,166,389	799,570	27,246	7,991,527
1999	8,102,503	2,579,782	1,226,554	27,963	11,936,802
2000	4,459,508	3,577,798	247,475	79,365	8,364,146
2001	2,800,868	2,284,067	213,454	22,414	5,320,803
2002	2,324,281	1,310,940	270,531	5,926	3,911,678
2003	3,104,572	2,700,479	428,503	16,045	6,249,599
2004	2,329,223	3,857,610	498,690	244,600	6,930,123
2005	3,890,960	3,508,713	366,751	298,326	8,064,750
2006	4,429,520	5,423,320	398,582	190,037	10,441,459
2007	5,018,241	3,420,699	150,583	68,583	8,658,106
2008	3,317,365	1,941,762	305,023	38,267	5,602,418
2009	2,741,107	2,910,195	139,002	70,765	5,861,069
2010	5,142,268	3,319,129	115,026	232,643	8,809,066
2011	7,804,342	4,747,813	108,274	1,080,840	13,741,269
2012	6,401,191	8,175,700	32,606	783,464	15,392,961
2013	3,021,936	2,892,600	59,008	66,766	6,040,309
2014	3,425,588	4,189,250	95,711	240,985	7,951,533
2015	9,058,728	3,782,261	186,690	742,855	13,770,535
2016	12,098,040	1,411,143	44,068	493,548	14,046,799
2017	5,512,551	1,736,340	4,244	28,539	7,281,674
2018	280,159	942,012	11,603	0	1,233,774
2019	471,411	483,954	48,885	65,391	1,069,641
2020 ^a	0	25,492	73,834	0	99,326
2021	741,220	1,185,051	34,010	0	1,960,281
2022	1,683,906	1,485,163	57,198	0	3,226,266

Notes: Weights reported in whole fish pounds. Discards at sea excluded. CF = confidential; data are confidential in cases where fewer than 3 vessels participated. Total pounds do not include confidential data.

^a No directed parallel Pacific cod fisheries, bycatch only.

Table 6.—Chignik Area Pacific cod harvest, in pounds, by gear type, during parallel fisheries, 1997–2022.

Year	Gear type				Total
	Pot	Longline	Trawl	Jig	
1997		CF – All gear types			651,504
1998		CF – All gear types			541,455
1999	822,098	3,056	39,704	0	864,858
2000		CF – All gear types			434,483
2001		CF – All gear types			174,654
2002		CF – All gear types			294,577
2003		CF – All gear types			292,112
2004		CF – All gear types			211,006
2005		CF – All gear types			95,400
2006		CF – All gear types			112,499
2007	CF	1,549	CF	0	40,033
2008		CF – All gear types			210,326
2009	239,584	63,551	0	0	303,135
2010	564,567	66,398	0	0	630,965
2011	258,963	96,036	CF	CF	357,322
2012	CF	14,631	37,626	CF	88,878
2013	395,052	25,716	20,018	0	440,785
2014	1,729,086	6,828	0	0	1,735,914
2015	1,053,533	14,881	837	0	1,069,251
2016	1,154,775	57,981	5,245	0	1,218,002
2017	352,566	8,587	171	0	361,324
2018	0	11,079	CF	0	11,079
2019	CF	CF	CF	0	517,520
2020 ^a	0	6,625	29,501	0	36,126
2021	0	7,679	2,912	0	10,591
2022	0	8,371	3,409	0	11,780

Notes: Weights reported in whole fish pounds. Discards at sea excluded. CF = confidential; data are confidential when fewer than 3 vessels participated. Total fish pounds do not include confidential data.

^a No directed parallel Pacific cod fisheries, bycatch only.

Table 7.—South Alaska Peninsula Area Pacific cod harvest, in pounds, by gear type, during parallel fisheries, 1997–2022.

Year	Gear type				Total
	Pot	Longline	Trawl	Jig	
1997	2,068,400	32,624	7,758,378	CF	9,859,402
1998	4,205,388	522,328	3,867,782	0	8,595,498
1999	3,279,793	34,975	5,308,250	0	8,623,018
2000	5,699,112	236,808	6,698,838	11,499	12,646,257
2001	3,272,010	53,184	2,424,221	340,092	6,089,507
2002	6,051,920	30,456	666,876	411,378	7,160,630
2003	12,966,344	60,803	310,012	92,528	13,429,687
2004	12,887,904	30,455	945,983	397,922	14,262,264
2005	6,175,670	566,138	2,835,871	100,691	9,678,370
2006	9,286,910	233,028	6,366,015	CF	15,885,953
2007	6,559,997	426,535	2,483,748	3,300	9,473,580
2008	6,387,463	626,799	863,671	114,599	7,992,532
2009	8,054,281	2,308,330	654,176	417,515	11,434,302
2010	13,229,552	1,605,590	1,691,696	763,299	17,290,137
2011	17,487,423	375,680	765,222	503,458	19,131,783
2012	5,720,700	358,908	2,761,687	567,920	9,409,215
2013	7,851,502	356,391	700,882	674,577	9,583,352
2014	8,551,709	503,917	1,048,900	1,690,458	11,794,984
2015	8,115,335	211,007	707,076	120,803	9,154,221
2016	7,464,402	462,774	2,185,670	114,765	10,227,611
2017	4,164,565	407,498	1,340,668	106,746	6,019,476
2018	691,392	56,093	407,353	274,989	1,429,827
2019	327,056	46,080	719,310	296,219	1,388,665
2020 ^a	CF	16,259	72,807	0	89,066
2021	1,204,644	22,209	542,962	78,777	1,848,592
2022	652,409	23,954	37,905	CF	714,268

Notes: Weights reported in whole fish pounds. Discards at sea excluded. CF = confidential; data are confidential in cases where fewer than 3 vessels participated. Total pounds do not include confidential data.

^a No directed parallel Pacific cod fisheries, bycatch only.

Table 8.—Kodiak, Chignik, and South Alaska Peninsula (SAP) Areas regulatory development for state-waters and parallel Pacific cod fisheries, 1996–2022.

Year	Regulation
1996	<ul style="list-style-type: none"> – Alaska Board of Fisheries developed state-waters Pacific cod management plans for Kodiak, Chignik, and SAP Areas. – Kodiak, Chignik, and SAP Areas established as exclusive registration areas for state-waters fisheries; suspension of exclusivity allowed after October 30. – Kodiak, Chignik, and SAP Areas allowable gear for state-waters established; mechanical jigging machines (5 machines), hand troll, and pots (60 pots); suspension of gear limits allowed after October 30. – Season opening dates established for state-waters fisheries; Kodiak and SAP Areas open 14 days after federal season closure; Chignik Area opens April 15. – Vessel size limits established for Chignik and SAP state-waters fisheries (≤ 58 ft); suspension of vessel size limit allowed after October 30. – Kodiak Area state-waters GHF allocated by gear type (50% pot, 50% jig); allocation rollover allowed after August 31.
1997	<ul style="list-style-type: none"> – Kodiak, Chignik, and SAP Areas first state-waters fisheries prosecuted.
1998	<ul style="list-style-type: none"> – Season opening dates changed for state-waters fisheries; Kodiak and SAP Areas open 7 days after federal season closure; Chignik Area opens April 1. – SAP Area state-waters GHF allocated by gear type (85% pot, 15% jig); allocation rollover allowed after August 31.
1999	<ul style="list-style-type: none"> – Chignik Area state-waters season opening date changed to April 15. – Chignik Area state-waters GHF allocated by gear type (85% pot, 15% jig); allocation rollover allowed after August 14. – Chignik Area changed to superexclusive registration area for state-waters fishery. – Kodiak Area pot gear vessels >58 ft harvest capped at 25% of state-waters GHF prior to September 1.
2001	<ul style="list-style-type: none"> – State regulation adopted recognizing Steller sea lion haulouts during parallel fisheries. – Chignik Area state-waters season opening date changed to 7 days after federal CGOA closure.
2002	<ul style="list-style-type: none"> – Vessel monitoring system (VMS) rules implemented during parallel fisheries. – Pot storage requirements liberalized in Kodiak and Chignik Areas for transition period between parallel and state-waters fisheries. – Chignik Area state-waters season opening date changed to March 1.
2004	<ul style="list-style-type: none"> – Pot storage requirements liberalized in SAP Area for transition period between parallel and state-waters fisheries.
2005	<ul style="list-style-type: none"> – Chignik Area state-waters GHF allocation changed (90% pot, 10% jig).
2007	<ul style="list-style-type: none"> – SAP Area 24-hour weather delay prior to state-waters season opening adopted. – SAP Area mandatory inseason catch reporting by vessels during state-waters fishery adopted. – SAP Area registration requirements changed, prohibiting fishing in another groundfish fishery outside of SAP Area and a portion of Chignik Area.
2010	<ul style="list-style-type: none"> – SAP Area vessel size limit (≤ 58 ft) for parallel fishery adopted.

-continued-

Table 8.—Page 2 of 2.

Year	Regulation
2011	– Chignik Area vessel size limit (≤ 58 ft) for parallel fishery adopted.
2012	– Kodiak Area state-waters season opening dates changed: pot gear opens 7 days after federal CGOA pot gear A-season closure; jig gear opens 48 hours after federal CGOA jig gear A-season closure. – Chignik Area state-waters season opening dates changed: pot gear opens 7 days after federal CGOA pot gear A-season closure or March 7, whichever is later. – SAP Area state-waters season opening dates changed: pot gear opens 7 days after federal WGOA pot gear A-season closure or March 7, whichever is later, unless delayed by weather. – Kodiak, Chignik and SAP Areas state-waters season closure dates changed: jig gear closes June 8 or later, based on inseason assessment, to allow parallel jig gear season.
2014	– SAP Area state-waters GHL increased to 30% of WGOA ABC. – Chignik Area state-waters season opening dates changed: pot gear opens 7 days after federal CGOA pot gear A-season closure or March 1, whichever is later. – Chignik and SAP Areas pot gear storage regulations changed: vessels may store open and unbaited pots at any depth beginning 7 days prior to state-waters season opening.
2015	– Chignik Area gear limits removal date changed from after October 30 to after August 14.
2016	– Chignik Area reduced waters closed for Steller sea lion haulouts during parallel fishery for vessels that do not possess a FFP.
2017	– Kodiak Area nonexclusive registration area designation date changed from October 30 to June 10 for jig gear vessels.
2018	– Chignik Area state-waters rollover season closure date changed from September 1 to October 30, or when the GHL is attained, whichever occurs first. – SAP Area state-waters season opening weather delay provision removed for vessels using jig gear.
2020	– Kodiak Area state-waters jig gear season opening date changed to January 1. – Kodiak Area state-waters rollover season addition: if it is determined that the jig gear GHL allocation will not be taken by June 10, 50% of the remaining jig gear allocation, as of March 25, may be taken by either pot or jig gear beginning April 1. – Kodiak Area gear limit increased from 5 to 6 mechanical jigging machines.

Notes: SAP = South Alaska Peninsula. GHL = guideline harvest level. CGOA = Central Gulf of Alaska. WGOA = Western Gulf of Alaska. ABC = acceptable biological catch. FFP = Federal Fisheries Permit.

Table 9.—Kodiak, Chignik, and South Alaska Peninsula Areas state-waters Pacific cod effort, guideline harvest level (GHL), harvest in pounds, and value, 2002–2022.

	Year	Vessels	Landings	GHL	Harvest ^a	Price per pound ^b	Exvessel value
Kodiak Area	2002	82	552	8,730,306	8,825,851	\$0.32	\$2,824,272
	2003	128	837	7,991,757	8,154,867	\$0.35	\$2,854,203
	2004	156	1,122	9,865,686	10,033,889	\$0.30	\$3,010,167
	2005	158	1,011	9,126,311	8,548,163	\$0.33	\$2,820,894
	2006	113	646	10,436,959	6,330,518	\$0.41	\$2,595,512
	2007	94	639	10,436,959	6,406,965	\$0.52	\$3,331,622
	2008	111	988	10,444,675	10,548,875	\$0.60	\$6,329,325
	2009	130	971	8,686,489	8,591,477	\$0.34	\$2,921,102
	2010	114	880	13,514,888	13,566,306	\$0.27	\$3,662,903
	2011	161	1,168	14,830,496	15,268,123	\$0.36	\$5,496,524
	2012	179	1,356	15,691,401	15,416,530	\$0.37	\$5,704,116
	2013	88	441	13,582,680	7,277,324	\$0.27	\$1,964,877
	2014	100	753	14,633,165	12,347,200	\$0.34	\$4,198,048
	2015	127	1,046	16,898,432	12,180,136	\$0.34	\$4,141,246
	2016	140	931	13,589,294	10,161,895	\$0.33	\$3,353,425
	2017	48	227	12,174,904	3,839,186	\$0.39	\$1,497,283
	2018	20	56	2,237,118	1,166,191	\$0.52	\$606,419
	2019	48	161	2,112,834	2,118,905	\$0.56	\$1,186,587
	2020	37	188	1,515,044	1,518,504	\$0.47	\$713,697
	2021	55	317	3,763,252	3,650,604	\$0.40	\$1,460,242
	2022	50	280	5,443,157	4,913,137	\$0.48	\$2,358,306
Chignik Area	2002	25	198	4,888,971	4,227,519	\$0.20	\$845,504
	2003	28	257	4,475,384	4,467,571	\$0.28	\$1,250,920
	2004	28	297	6,905,980	5,750,461	\$0.24	\$1,380,111
	2005	23	250	6,388,418	5,787,543	\$0.25	\$1,446,886
	2006	14	206	7,305,871	3,439,521	\$0.34	\$1,169,437
	2007	16	241	7,305,871	5,700,861	\$0.45	\$2,565,387
	2008	25	265	7,311,273	6,838,934	\$0.56	\$3,829,803
	2009	12	123	6,080,542	5,679,676	\$0.24	\$1,363,122
	2010	17	183	9,460,421	9,153,719	\$0.30	\$2,746,116
	2011	32	244	10,381,347	10,346,856	\$0.31	\$3,207,525
	2012	26	204	10,983,981	10,496,608	\$0.36	\$3,778,779
	2013	19	191	9,507,876	8,712,190	\$0.27	\$2,352,291
	2014	13	157	10,243,216	9,593,269	\$0.29	\$2,782,048
	2015	19	213	11,828,903	10,248,382	\$0.27	\$2,767,063
	2016	10	192	9,512,506	8,482,544	\$0.28	\$2,375,112
	2017	11	103	8,522,432	3,253,854	\$0.32	\$1,041,233
	2018	3	19	1,565,982	1,413,366	\$0.46	\$650,148
	2019	5	24	1,478,983	1,388,727	\$0.52	\$722,138
	2020	4	14	1,060,531	980,178	\$0.39	\$382,269
	2021	5	30	2,634,277	2,344,095	\$0.36	\$843,874
	2022	4	45	3,810,210	2,499,579	\$0.44	\$1,149,806

-continued-

Table 9.—Page 2 of 2.

	Year	Vessels	Landings	GHL	Harvest ^a	Price per pound ^b	Exvessel value
South Alaska Peninsula Area	2002	103	594	12,381,712	12,715,465	\$0.23	\$2,924,557
	2003	92	604	11,353,806	11,560,663	\$0.27	\$3,121,379
	2004	88	594	12,461,629	12,442,442	\$0.24	\$2,986,186
	2005	74	529	11,527,972	11,436,857	\$0.26	\$2,973,583
	2006	54	386	14,801,285	11,739,736	\$0.38	\$4,461,100
	2007	60	465	14,801,285	12,678,151	\$0.47	\$5,958,731
	2008	97	700	14,292,568	13,302,050	\$0.57	\$7,582,169
	2009	72	514	11,886,774	11,594,124	\$0.25	\$2,898,531
	2010	69	534	15,258,744	15,288,266	\$0.26	\$3,974,949
	2011	82	551	16,744,109	16,806,305	\$0.31	\$5,209,955
	2012	95	644	15,449,995	15,356,768	\$0.34	\$5,221,301
	2013	74	529	15,586,682	15,583,345	\$0.27	\$4,207,503
	2014	73	616	21,657,085	21,949,138	\$0.29	\$6,365,250
	2015	76	759	25,596,991	23,867,585	\$0.28	\$6,682,924
	2016	55	619	26,788,149	22,821,190	\$0.27	\$6,161,721
	2017	49	570	24,002,142	20,196,191	\$0.31	\$6,260,819
	2018	41	182	5,345,273	5,347,934	\$0.42	\$2,246,132
	2019	43	175	5,048,314	5,074,974	\$0.47	\$2,385,238
	2020	32	148	2,124,573	2,051,238	\$0.43	\$882,032
	2021	44	213	5,281,781	4,690,656	\$0.41	\$1,923,169
	2022	41	190	6,575,440	5,813,712	\$0.47	\$2,732,445
Total harvest	2002	208	1,344	26,000,989	25,768,835	\$0.30	\$7,730,651
	2003	248	1,698	23,820,947	24,183,101	\$0.34	\$8,222,254
	2004	272	2,013	29,233,295	28,266,792	\$0.27	\$7,632,034
	2005	253	1,790	27,042,701	25,772,563	\$0.30	\$7,731,769
	2006	179	1,234	32,544,115	21,509,775	\$0.40	\$8,603,910
	2007	170	1,345	32,544,115	24,785,977	\$0.50	\$12,392,989
	2008	232	1,953	32,048,516	30,689,859	\$0.59	\$18,107,017
	2009	213	1,608	26,653,805	25,865,277	\$0.30	\$7,759,583
	2010	199	1,597	38,234,053	38,008,291	\$0.27	\$10,262,239
	2011	275	1,963	41,955,952	42,421,284	\$0.34	\$14,423,237
	2012	300	2,204	42,125,377	41,269,905	\$0.36	\$14,857,166
	2013	180	1,161	38,677,238	31,572,859	\$0.27	\$8,524,672
	2014	186	1,526	46,533,466	43,889,607	\$0.31	\$13,605,778
	2015	222	2,018	54,324,326	46,296,103	\$0.31	\$14,351,792
	2016	205	1,742	49,889,949	41,465,629	\$0.30	\$12,439,689
	2017	107	900	44,699,478	27,289,230	\$0.33	\$9,005,446
	2018	64	257	9,148,373	7,927,492	\$0.43	\$3,408,822
	2019	96	360	8,640,131	8,582,606	\$0.50	\$4,291,303
	2020	73	350	4,700,148	4,549,920	\$0.42	\$1,910,966
	2021	103	560	11,679,310	10,685,355	\$0.40	\$4,274,142
	2022	95	515	15,828,807	13,226,428	\$0.48	\$6,348,685

Notes: Weights reported in whole fish pounds. Discards at sea excluded. Totals by area may not match number of vessels by gear type in Tables 10, 13, and 15 because a vessel may use more than one gear type. GHL = guideline harvest level.

^a Chignik Area jig vessel harvest excluded in 2006, 2008–2010, 2014–2015, 2017, and 2021 due to confidentiality.

^b Price per pound calculated from whole fish pounds sold, excluding bait and meal.

Table 10.–Kodiak Area state-waters Pacific cod guideline harvest level (GHL), effort, harvest in pounds, and value, by gear type, 1997–2022.

Year	Gear	GHL	Vessels	Landings	Harvest ^a	% of GHL harvested	Price per pound ^b	Exvessel value
1997	Jig	4,249,410	72	483	1,976,546	46.5%	\$0.23	\$454,606
	Pot	4,249,410	38	243	5,769,129	135.8%	\$0.22	\$1,269,208
1998	Jig	4,057,608	88	662	2,114,685	52.1%	\$0.23	\$486,378
	Pot	4,057,608	47	310	6,070,139	149.6%	\$0.22	\$1,335,431
1999 ^c	Jig	5,860,989	113	793	2,294,837	39.2%	\$0.38	\$872,038
	Pot	5,860,989	77	471	8,492,710	144.9%	\$0.32	\$2,717,667
2000	Jig	6,000,707	139	1,226	2,814,481	46.9%	\$0.40	\$1,125,792
	Pot	6,000,707	69	481	5,748,334	95.8%	\$0.39	\$2,241,850
2001	Jig	5,325,542	69	433	1,252,692	23.5%	\$0.36	\$450,969
	Pot	5,325,542	34	236	3,591,049	67.4%	\$0.33	\$1,185,046
2002	Jig	4,365,153	51	340	1,389,838	31.8%	\$0.28	\$389,155
	Pot	4,365,153	33	212	7,436,013	170.3%	\$0.29	\$2,156,444
2003	Jig	3,995,878	100	688	3,195,605	80.0%	\$0.35	\$1,118,462
	Pot	3,995,878	42	149	4,959,262	124.1%	\$0.32	\$1,586,964
2004	Jig	4,932,843	120	961	4,210,284	85.4%	\$0.34	\$1,431,497
	Pot	4,932,843	47	161	5,823,605	118.1%	\$0.29	\$1,688,846
2005	Jig	4,563,155	117	849	4,570,327	100.2%	\$0.33	\$1,508,208
	Pot	4,563,155	51	162	3,977,835	87.2%	\$0.30	\$1,193,350
2006	Jig	5,218,480	77	477	1,446,881	27.7%	\$0.43	\$622,159
	Pot	5,218,480	41	169	4,883,637	93.6%	\$0.41	\$2,002,291
2007	Jig	5,218,480	63	457	1,249,753	23.9%	\$0.52	\$649,872
	Pot	5,218,480	33	182	5,157,212	98.8%	\$0.41	\$2,114,457
2008	Jig	5,222,338	76	647	2,042,082	39.1%	\$0.61	\$1,245,670
	Pot	5,222,338	37	341	8,506,792	162.9%	\$0.59	\$5,019,007
2009	Jig	4,343,244	94	833	4,450,423	102.5%	\$0.32	\$1,424,135
	Pot	4,343,244	38	138	4,141,054	95.3%	\$0.32	\$1,325,137
2010	Jig	6,757,444	81	707	6,504,733	96.3%	\$0.30	\$1,951,420
	Pot	6,757,444	36	173	7,061,573	104.5%	\$0.25	\$1,765,393
2011	Jig	7,415,248	132	980	7,135,466	96.2%	\$0.35	\$2,497,413
	Pot	7,415,248	46	190	8,132,657	109.7%	\$0.35	\$2,846,430
2012	Jig	7,845,701	145	1,160	7,938,727	101.2%	\$0.38	\$3,016,716
	Pot	7,845,701	45	196	7,477,802	95.3%	\$0.38	\$2,841,565

-continued-

Table 10.—Page 2 of 2.

Year	Gear	GHL	Vessels	Landings	Harvest ^a	% of GHL harvested	Price per pound ^b	Exvessel value
2013	Jig	6,791,340	55	199	587,942	8.7%	\$0.26	\$152,865
	Pot	6,791,340	34	242	6,689,382	98.5%	\$0.26	\$1,739,239
2014	Jig	7,316,583	77	520	3,170,713	43.3%	\$0.35	\$1,109,750
	Pot	7,316,583	28	233	9,176,488	125.4%	\$0.30	\$2,752,946
2015	Jig	8,449,216	100	809	3,879,512	45.9%	\$0.36	\$1,396,624
	Pot	8,449,216	30	236	8,300,600	98.2%	\$0.34	\$2,822,204
2016	Jig	6,794,647	108	747	3,327,887	49.0%	\$0.35	\$1,164,760
	Pot	6,794,647	36	184	6,834,008	100.6%	\$0.33	\$2,255,223
2017	Jig	6,087,452	23	50	101,991	1.7%	\$0.41	\$41,816
	Pot	6,087,452	25	177	3,737,195	61.4%	\$0.39	\$1,457,506
2018	Jig	1,118,559	10	21	29,016	2.6%	\$0.50	\$14,508
	Pot	1,118,559	10	35	1,137,175	101.7%	\$0.52	\$591,331
2019	Jig	1,056,417	33	101	363,646	34.4%	\$0.59	\$214,551
	Pot	1,056,417	16	60	1,755,259	166.2%	\$0.56	\$982,945
2020	Jig	757,522	30	156	682,291	90.1%	\$0.50	\$341,146
	Pot	757,522	7	32	836,213	110.4%	\$0.44	\$367,934
2021	Jig	1,881,626	45	264	1,752,630	93.1%	\$0.42	\$736,105
	Pot	1,881,626	10	53	1,897,975	100.9%	\$0.39	\$740,210
2022	Jig	2,721,579	36	209	1,629,439	59.9%	\$0.50	\$814,720
	Pot	2,721,579	16	71	3,283,698	120.7%	\$0.48	\$1,576,175

Notes: Weights reported in whole fish pounds. Discards at sea excluded.

^a Harvest may include landings made after allocation rollovers.

^b Price per pound calculated from sold whole fish pounds.

^c Beginning in 1999, vessels >58 ft using pot gear are capped at 25% of the total GHL prior to September 1.

Table 11.—Pacific cod effort and harvest in pounds by statistical area, from the Kodiak Area state-waters season, 2022.

Statistical area	Vessels	Landings ^a	Harvest
525733	25	72	786,412
525703	12	26	731,567
535732	13	30	525,621
525701	17	48	492,390
535803	8	15	418,654
535631	4	11	196,353
525806	7	16	141,165
545734	3	6	133,642
515801	8	14	99,480
525731	10	20	88,406
535705	5	7	11,461
Other ^b	17	37	1,287,990
Total	50	280	4,913,137

Notes: Weights reported in whole fish pounds. Discards at sea excluded.
Kodiak Area state-waters statistical areas for groundfish can be found in Appendix B1.

^a Landings may involve multiple statistical areas.

^b A total of 15 statistical areas combined due to confidentiality.

Table 12.—Kodiak Area state-waters Pacific cod fishery dates and management actions, by gear type, 1997–2022.

Year	Fishery dates and management actions	
1997	<i>Pot Gear Fishery Dates:</i> April 4–May 4 September 1–December 31 <i>Management Actions:</i> May 4 - Pot gear season closed when GHL was attained September 1 - Allocation rollover; pot gear season reopened October 31 - Gear limits and exclusive vessel registration removed	<i>Jig Gear Fishery Dates:</i> April 4–December 31
1998	<i>Pot Gear Fishery Dates:</i> March 17–April 27 September 1–December 31 <i>Management Actions:</i> April 27 - Pot gear season closed when GHL was attained September 1 - Allocation rollover; pot gear season reopened October 31 - Gear limits and exclusive vessel registration removed	<i>Jig Gear Fishery Dates:</i> March 17–December 31
1999	<i>Pot Gear Fishery Dates:</i> March 21–April 29 October 5–December 31 <i>Management Actions:</i> April 29 - Pot gear season closed when GHL was attained September 1 - Jig gear season closed for parallel B season October 5 - Pot and jig gear seasons reopened following federal CGOA B-season closure October 31 - Gear limits and exclusive vessel registration removed	<i>Jig Gear Fishery Dates:</i> March 21–September 1 October 5–December 31
2000	<i>Pot Gear Fishery Dates:</i> March 11–December 31 <i>Management Actions:</i> October 31 - Gear limits and exclusive vessel registration removed	<i>Jig Gear Fishery Dates:</i> March 11–December 31
2001	<i>Pot Gear Fishery Dates:</i> March 11–December 31 <i>Management Actions:</i> October 31 - Allocation rollover; gear limits and exclusive vessel registration removed	<i>Jig Gear Fishery Dates:</i> March 11–December 31
2002	<i>Pot Gear Fishery Dates:</i> March 16–May 4 September 1–December 31 <i>Management Actions:</i> May 4 - Pot gear season closed when GHL was attained September 1 - Allocation rollover; pot gear season reopened October 31 - Gear limits and exclusive vessel registration removed	<i>Jig Gear Fishery Dates:</i> March 16–December 31

-continued-

Table 12.–Page 2 of 4.

Year	Fishery dates and management actions	
2003	<i>Pot Gear Fishery Dates:</i> February 16–March 2 <i>Management Actions:</i> March 2 - Pot gear season closed when GHL was attained May 9 - Jig gear season closed when GHL was attained	<i>Jig Gear Fishery Dates:</i> February 16–May 9
2004	<i>Pot Gear Fishery Dates:</i> February 7–February 22 <i>Management Actions:</i> February 22 - Pot gear season closed when GHL was attained April 20 - Jig gear season closed when GHL was attained	<i>Jig Gear Fishery Dates:</i> February 7–April 20
2005	<i>Pot Gear Fishery Dates:</i> February 2–February 13 <i>Management Actions:</i> February 13 - Pot gear season closed when GHL was attained April 21 - Jig gear season closed when GHL was attained	<i>Jig Gear Fishery Dates:</i> February 2–April 21
2006	<i>Pot Gear Fishery Dates:</i> March 7–March 29 <i>Management Actions:</i> March 29 - Pot gear season closed when GHL was attained September 1 - Jig gear season closed for parallel B season	<i>Jig Gear Fishery Dates:</i> March 7–September 1
2007	<i>Pot Gear Fishery Dates:</i> March 6–April 8 <i>Management Actions:</i> April 8 - Pot gear season closed when GHL was attained September 1 - Jig gear season closed for parallel B season	<i>Jig Gear Fishery Dates:</i> March 6–September 1
2008	<i>Pot Gear Fishery Dates:</i> February 27–March 26 October 5–November 22 <i>Management Actions:</i> March 26 - Pot gear season closed when GHL was attained September 1 - Jig gear season closed for parallel B season October 5 - Allocation rollover; pot and jig gear seasons reopened following federal CGOA B-season closure November 22 - Pot and jig gear seasons closed when GHL was attained	<i>Jig Gear Fishery Dates:</i> February 27–September 1 October 5–November 22
2009	<i>Pot Gear Fishery Dates:</i> February 3–February 18 <i>Management Actions:</i> February 18 - Pot gear season closed when GHL was attained September 1 - Jig gear season closed for parallel B season October 3 - Jig gear season reopened following federal CGOA B-season closure	<i>Jig Gear Fishery Dates:</i> February 3–September 1 October 3–December 31

-continued-

Table 12.–Page 3 of 4.

Year	Fishery dates and management actions	
2010	<i>Pot Gear Fishery Dates:</i> February 7–February 23 <i>Management Actions:</i> February 23 - Pot gear season closed when GHL was attained June 5 - Jig gear season closed when GHL was attained	<i>Jig Gear Fishery Dates:</i> February 7–June 5
2011	<i>Pot Gear Fishery Dates:</i> February 5–February 18 <i>Management Actions:</i> February 18 - Pot gear season closed when GHL was attained April 14 - Jig gear season closed when GHL was attained	<i>Jig Gear Fishery Dates:</i> February 5–April 14
2012	<i>Pot Gear Fishery Dates:</i> February 17–March 1 <i>Management Actions:</i> March 1 - Pot gear season closed when GHL was attained May 23 - Jig gear season closed when GHL was attained October 12 - Allocation rollover; jig gear season reopened following federal CGOA B-season closure	<i>Jig Gear Fishery Dates:</i> March 8–May 23 October 12–December 31
2013	<i>Pot Gear Fishery Dates:</i> February 17–April 2 <i>Management Actions:</i> April 2 - Pot gear season closed when GHL was attained October 29 - Exclusive vessel registration for jig gear removed	<i>Jig Gear Fishery Dates:</i> March 15–December 31
2014	<i>Pot Gear Fishery Dates:</i> February 20–March 19 November 10–December 31 <i>Management Actions:</i> March 19 - Pot gear season closed when GHL was attained November 10 - Allocation rollover; pot gear season reopened following federal CGOA B-season closure; gear limits and exclusive vessel registration removed	<i>Jig Gear Fishery Dates:</i> March 15–December 31
2015	<i>Pot Gear Fishery Dates:</i> February 23–March 24 <i>Management Actions:</i> March 24 - Pot gear season closed when GHL was attained	<i>Jig Gear Fishery Dates:</i> March 4–December 31
2016	<i>Pot Gear Fishery Dates:</i> February 8–February 26 <i>Management Actions:</i> February 26 - Pot gear season closed when GHL was attained	<i>Jig Gear Fishery Dates:</i> March 3–December 31
2017	<i>Pot Gear Fishery Dates:</i> March 2–September 1 <i>Management Actions:</i> September 1 - Pot gear season closed to coordinate with parallel B-season opening	<i>Jig Gear Fishery Dates:</i> March 15–December 31

-continued-

Table 12.–Page 4 of 4.

Year	Fishery dates and management actions	
2018	<i>Pot Gear Fishery Dates:</i> February 21–March 23 <i>Management Actions:</i> March 3 - Pot gear season closed for vessels greater than 58 ft in overall length when the harvest cap for vessels greater than 58 ft in overall length was attained March 23 - Pot gear season closed when GHL was attained	<i>Jig Gear Fishery Dates:</i> January 1–December 31
2019	<i>Pot Gear Fishery Dates:</i> February 3–February 15 October 12–December 16 <i>Management Actions:</i> February 11 - Pot gear season closed for vessels greater than 58 ft in overall length when the harvest cap for vessels greater than 58 ft in overall length was attained February 15 - Pot gear season closed when GHL was attained October 12 - Allocation rollover; pot gear season reopened December 16 - Pot and jig gear seasons closed when GHL was attained	<i>Jig Gear Fishery Dates:</i> March 12–December 16
2020	<i>Pot Gear Fishery Dates:</i> February 24–March 11 November 23–December 31 <i>Management Actions:</i> March 11 - Pot gear season closed when GHL was attained October 1 - Exclusive vessel registration for jig gear removed November 23 - Allocation rollover; pot gear season reopened December 29 - Gear limits removed	<i>Jig Gear Fishery Dates:</i> January 1–December 31
2021	<i>Pot Gear Fishery Dates:</i> January 29–February 27 <i>Management Actions:</i> February 18 - Pot gear season closed for vessels greater than 58 ft in overall length when the harvest cap for vessels greater than 58 ft in overall length was attained February 27 - Pot gear season closed when GHL was attained	<i>Jig Gear Fishery Dates:</i> January 1–December 31
2022	<i>Pot Gear Fishery Dates:</i> February 23–March 10 April 1–September 1 <i>Management Actions:</i> March 8 - Pot gear season closed for vessels greater than 58 feet in overall length when the harvest cap for vessels greater than 58 ft in overall length was attained March 10 - Pot gear season closed when GHL was attained April 1 - Allocation rollover; pot gear season reopened September 1 - Pot gear season closed to coordinate with parallel B season opening	<i>Jig Gear Fishery Dates:</i> January 1–December 31

Notes: GHL = guideline harvest level. CGOA = Central Gulf of Alaska.

Table 13.—Chignik Area state-waters Pacific cod guideline harvest level (GHL), effort, harvest in pounds, and value, by gear type, 1997–2022.

Year	Gear	GHL	Vessels	Landings	Harvest ^a	% of GHL harvested	Price per pound ^b	Exvessel value
1997	Jig	5,949,174 ^c	4	14	35,002	19.1%	\$0.18	\$6,300
	Pot		10	60	1,098,970		\$0.18	\$197,815
1998	Jig	5,680,652 ^c	11	59	167,283	98.7%	\$0.18	\$30,111
	Pot		32	236	5,440,796		\$0.17	\$924,935
1999	Jig	8,205,384 ^c	11	56	218,408	78.3%	\$0.32	\$69,891
	Pot		32	396	6,207,176		\$0.29	\$1,800,081
2000	Jig	1,008,119	5	12	38,453	3.8%	\$0.31	\$11,920
	Pot	5,712,673	20	151	1,756,305	30.7%	\$0.30	\$526,892
2001	Jig	894,691	13	55	277,411	31.0%	\$0.27	\$74,901
	Pot	5,069,916	15	124	2,371,243	46.8%	\$0.26	\$616,523
2002	Jig	733,346	14	59	324,199	44.2%	\$0.20	\$64,840
	Pot	4,155,625	12	139	3,903,320	93.9%	\$0.20	\$780,664
2003	Jig	671,308	16	106	433,067	64.5%	\$0.28	\$121,259
	Pot	3,804,076	15	151	4,034,504	106.1%	\$0.26	\$1,048,971
2004	Jig	1,035,897	14	53	141,697	13.7%	\$0.24	\$34,007
	Pot	5,870,083	17	244	5,608,763	95.5%	\$0.23	\$1,290,016
2005	Jig	638,842	9	44	136,948	21.4%	\$0.24	\$32,868
	Pot	5,749,576	15	206	5,650,595	98.3%	\$0.25	\$1,412,649
2006	Jig	730,587	2	4	CF	CF	CF	CF
	Pot	6,575,284	12	202	3,439,521	52.3%	\$0.34	\$1,169,437
2007	Jig	730,587	0	0	0	0.0%	ND	ND
	Pot	6,575,284	16	241	5,700,861	86.7%	\$0.45	\$2,565,387
2008	Jig	731,127	2	3	CF	CF	CF	CF
	Pot	6,580,145	23	262	6,838,934	103.9%	\$0.56	\$3,829,803
2009	Jig	608,054	1	1	CF	CF	CF	CF
	Pot	5,472,488	11	122	5,679,676	103.8%	\$0.24	\$1,363,122
2010	Jig	946,042	2	24	CF	CF	CF	CF
	Pot	8,514,379	15	160	9,153,719	107.5%	\$0.24	\$2,196,893
2011	Jig	1,038,135	10	45	224,400	21.6%	\$0.32	\$71,808
	Pot	9,343,213	23	199	10,122,456	108.3%	\$0.32	\$3,239,186
2012	Jig	1,098,398	6	15	266,639	24.3%	\$0.30	\$79,992
	Pot	9,885,583	20	189	10,229,969	103.5%	\$0.35	\$3,580,489

-continued-

Table 13.—Page 2 of 2.

Year	Gear	GHL	Vessels	Landings	Harvest ^a	% of GHL harvested	Price per pound ^b	Exvessel value
2013	Jig	950,788	0	0	0	0.0%	ND	ND
	Pot	8,557,088	19	191	8,712,190	101.8%	\$0.25	\$2,178,048
2014	Jig	1,024,322	2	3	CF	CF	CF	CF
	Pot	9,218,894	12	154	9,593,269	104.1%	\$0.28	\$2,686,115
2015	Jig	1,182,890	2	6	CF	CF	CF	CF
	Pot	10,646,013	17	207	10,248,382	96.3%	\$0.27	\$2,767,063
2016	Jig	951,251	0	0	0	0.0%	ND	ND
	Pot	8,561,255	10	192	8,482,544	99.1%	\$0.28	\$2,375,112
2017	Jig	852,243	1	2	CF	CF	CF	CF
	Pot	7,670,189	10	101	3,253,854	42.4%	\$0.32	\$1,041,233
2018	Jig	156,598	0	0	0	0.0%	ND	ND
	Pot	1,409,384	3	19	1,413,366	100.3%	\$0.46	\$650,148
2019	Jig	147,898	0	0	0	0.0%	ND	ND
	Pot	1,331,085	5	24	1,388,727	104.3%	\$0.52	\$722,138
2020	Jig	106,053	0	0	0	0.0%	ND	ND
	Pot	954,478	4	14	980,178	102.7%	\$0.39	\$382,269
2021	Jig	263,428	1	1	CF	CF	CF	CF
	Pot	2,370,849	4	29	2,344,095	98.9%	\$0.34	\$796,992
2022	Jig	381,021	0	0	0	0.0%	ND	ND
	Pot	3,429,189	4	45	2,499,579	72.9%	\$0.44	\$1,099,815

Notes: Weights reported in whole fish pounds. Discards at sea excluded. ND = no data. CF = confidential; data are confidential when fewer than 3 vessels participated.

^a Harvest may include landings made after allocation rollovers.

^b Price per pound calculated from whole fish pounds sold, excluding bait and meal.

^c Total GHL; no GHL allocation by gear type during 1997–1999 seasons.

Table 14.—Pacific cod effort and harvest in pounds by statistical area, from the Chignik Area state-waters season, 2022.

Statistical area	Vessels	Landings ^a	Harvest ^b
575635	3	19	941,880
Other ^c	4	26	1,557,699
Total	4	45	2,499,579

Notes: Weights reported in whole fish pounds. Discards at sea excluded.

Chignik Area state-waters statistical areas for groundfish can be found in Appendix B2.

^a Landings may involve multiple statistical areas.

^b Harvest is from pot gear only.

^c A total of 4 statistical areas combined due to confidentiality.

Table 15.—Chignik Area state-waters Pacific cod fishery dates and management actions, by gear type, 1997–2022.

Year	Fishery dates and management actions	
1997	<i>Pot Gear Fishery Dates:</i> April 15–June 15 August 1–December 31 <i>Management Actions:</i> August 1 - Pot and jig gear seasons reopened to harvest remaining GHL October 31 - Vessel size limit, gear limits, and exclusive vessel registration removed	<i>Jig Gear Fishery Dates:</i> April 15–June 15 August 1–December 31
1998	<i>Pot Gear Fishery Dates:</i> April 1–April 26 <i>Management Actions:</i> April 26 - Pot and jig gear seasons closed when pot GHL was attained May 20 - Jig gear season reopened	<i>Jig Gear Fishery Dates:</i> April 1–April 26 May 20–December 31
1999	<i>Pot Gear Fishery Dates:</i> April 15–September 1 October 5–December 31 <i>Management Actions:</i> September 1 - Pot and jig gear seasons closed for parallel B season October 5 - Pot and jig gear seasons reopened following federal CGOA B-season closure October 31 - Vessel size limit, gear limits and exclusive vessel registration removed	<i>Jig Gear Fishery Dates:</i> April 15–September 1 October 5–December 31
2000	<i>Pot Gear Fishery Dates:</i> April 15–December 31 <i>Management Actions:</i> October 31 - Vessel size limit and gear limits removed	<i>Jig Gear Fishery Dates:</i> April 15–December 31
2001	<i>Pot Gear Fishery Dates:</i> March 11–December 31 <i>Management Actions:</i> October 31 - Vessel size limit and gear limits removed	<i>Jig Gear Fishery Dates:</i> March 11–December 31
2002	<i>Pot Gear Fishery Dates:</i> March 1–December 31 <i>Management Actions:</i> October 31 - Vessel size limit and gear limits removed	<i>Jig Gear Fishery Dates:</i> March 1–December 31
2003	<i>Pot Gear Fishery Dates:</i> March 1–April 11 <i>Management Actions:</i> April 11 - Pot gear season closed when GHL was attained June 4 - Jig gear season closed when GHL was attained	<i>Jig Gear Fishery Dates:</i> March 1–June 4

-continued-

Table 15.–Page 2 of 5.

Year	Fishery dates and management actions	
2004	<i>Pot Gear Fishery Dates:</i>	<i>Jig Gear Fishery Dates:</i>
	March 1–May 13	March 1–December 31
	August 15–December 31	
	<i>Management Actions:</i>	
	May 13 - Pot gear season closed when GHL was attained	
	August 15 - Allocation rollover; pot gear season reopened	
	October 31 - Vessel size limit and gear limits removed	
2005	<i>Pot Gear Fishery Dates:</i>	<i>Jig Gear Fishery Dates:</i>
	March 1–May 10	March 1–December 31
	August 15–December 31	
	<i>Management Actions:</i>	
	May 10 - Pot gear season closed when GHL was attained	
	August 15 - Allocation rollover; pot gear season reopened	
	October 31 - Vessel size limit and gear limits removed	
2006	<i>Pot Gear Fishery Dates:</i>	<i>Jig Gear Fishery Dates:</i>
	March 1–September 1	March 1–September 1
	<i>Management Actions:</i>	
	August 15 - Allocation rollover	
	September 1 - Pot and jig gear seasons closed for parallel B season	
2007	<i>Pot Gear Fishery Dates:</i>	<i>Jig Gear Fishery Dates:</i>
	March 1–September 1	March 1–September 1
	<i>Management Actions:</i>	
	August 15 - Allocation rollover	
	September 1 - Pot and jig gear seasons closed for parallel B season	
2008	<i>Pot Gear Fishery Dates:</i>	<i>Jig Gear Fishery Dates:</i>
	March 1–April 17	March 1–September 1
	August 15–September 1	October 5–December 31
	October 5–December 31	
	<i>Management Actions:</i>	
	April 17 - Pot gear season closed when GHL was attained	
	August 15 - Allocation rollover; pot gear season reopened	
	September 1 - Pot and jig gear seasons closed for parallel B season	
	October 5 - Pot and jig gear seasons reopened following federal CGOA B-season closure	
	November 4 - Vessel size limit and gear limits removed	

-continued-

Table 15.–Page 3 of 5.

Year	Fishery dates and management actions	
2009	<i>Pot Gear Fishery Dates:</i>	<i>Jig Gear Fishery Dates:</i>
	March 1–April 8	March 1–September 1
	August 15–September 1	October 3–December 31
	October 3–December 31	
	<i>Management Actions:</i>	
	April 8 - Pot gear season closed when GHL was attained	
	August 15 - Allocation rollover; pot gear season reopened	
	September 1 - Pot and jig gear seasons closed for parallel B season	
	October 3 - Pot and jig gear seasons reopened following federal CGOA B-season closure	
2010	<i>Pot Gear Fishery Dates:</i>	<i>Jig Gear Fishery Dates:</i>
	March 1–April 6	March 1–September 1
	August 15–September 1	September 13–December 31
	September 13–December 31	
	<i>Management Actions:</i>	
	April 6 - Pot gear season closed when GHL was attained	
	August 15 - Allocation rollover; pot gear season reopened	
	September 1 - Pot and jig gear seasons closed for parallel B season	
	September 13 - Pot and jig gear seasons reopened following federal CGOA B-season closure	
2011	<i>Pot Gear Fishery Dates:</i>	<i>Jig Gear Fishery Dates:</i>
	March 1–March 17	March 1–September 1
	August 15–September 1	October 9–December 31
	October 9–December 31	
	<i>Management Actions:</i>	
	March 17 - Pot gear season closed when GHL was attained	
	August 15 - Allocation rollover; pot gear season reopened	
	September 1 - Pot and jig gear seasons closed for parallel B season	
	October 9 - Pot and jig gear seasons reopened following federal CGOA B-season closure	
2012	<i>Pot Gear Fishery Dates:</i>	<i>Jig Gear Fishery Dates:</i>
	March 7–March 28	March 15–June 10
	October 12–December 31	June 29–December 31
	<i>Management Actions:</i>	
	March 28 - Pot gear season closed when GHL was attained	
	June 10 - Jig gear seasons closed for parallel B season	
	June 29 - Jig gear season reopened following federal CGOA jig B season-closure	
	October 12 - Allocation rollover; pot gear season reopened following federal CGOA pot B-season closure	
2013	<i>Pot Gear Fishery Dates:</i>	<i>Jig Gear Fishery Dates:</i>
	March 7–March 29	March 15–December 31
	<i>Management Actions:</i>	
	March 29 - Pot gear season closed when GHL was attained	

-continued-

Table 15.–Page 4 of 5.

Year	Fishery dates and management actions	
2014	<i>Pot Gear Fishery Dates:</i> March 1–March 19 August 15–October 7 <i>Management Actions:</i> March 19 - Pot gear season closed when GHL was attained August 15 - Allocation rollover; pot gear season reopened October 7 - Pot gear seasons closed for parallel B season	<i>Jig Gear Fishery Dates:</i> March 15–December 31
2015	<i>Pot Gear Fishery Dates:</i> March 1–March 23 August 15–December 31 <i>Management Actions:</i> March 23 - Pot gear season closed when GHL was attained August 15 - Allocation rollover; pot gear season reopened	<i>Jig Gear Fishery Dates:</i> March 15–December 31
2016	<i>Pot Gear Fishery Dates:</i> March 1–April 16 August 15–December 31 <i>Management Actions:</i> April 16 - Pot gear season closed when GHL was attained August 15 - Allocation rollover; pot gear season reopened	<i>Jig Gear Fishery Dates:</i> March 15–December 31
2017	<i>Pot Gear Fishery Dates:</i> March 2–December 31 <i>Management Actions:</i> August 15 - Allocation rollover	<i>Jig Gear Fishery Dates:</i> March 15–December 31
2018	<i>Pot Gear Fishery Dates:</i> March 2–March 24 August 15–December 31 <i>Management Actions:</i> March 24 - Pot gear season closed when GHL was attained August 15 - Allocation rollover; pot gear season reopened	<i>Jig Gear Fishery Dates:</i> March 15–December 31
2019	<i>Pot Gear Fishery Dates:</i> March 1–March 13 August 15–October 30 <i>Management Actions:</i> March 13 - Pot gear season closed when GHL was attained August 15 - Allocation rollover; pot gear season reopened and gear limits removed	<i>Jig Gear Fishery Dates:</i> March 15–December 31
2020	<i>Pot Gear Fishery Dates:</i> March 1–March 13 August 15–December 31 <i>Management Actions:</i> March 13 - Pot gear season closed when GHL was attained August 15 - Allocation rollover; pot gear season reopened	<i>Jig Gear Fishery Dates:</i> March 15–December 31

-continued-

Table 15.–Page 5 of 5.

Year	Fishery dates and management actions	
2021	<i>Pot Gear Fishery Dates:</i>	<i>Jig Gear Fishery Dates:</i>
	March 1–April 9	March 15–December 31
	August 15–December 31	
	<i>Management Actions:</i>	
	April 9 - Pot gear season closed when GHL was attained	
2022	August 15 - Allocation rollover; pot gear season reopened and gear limits removed	
	<i>Pot Gear Fishery Dates:</i>	<i>Jig Gear Fishery Dates:</i>
	March 1–December 31	March 15–December 31
	<i>Management Actions:</i>	
	August 15 - Allocation rollover and gear limits lifted	
	November 3 - Vessel size limit lifted	

Notes: GHL = guideline harvest level. CGOA = Central Gulf of Alaska.

Table 16.—South Alaska Peninsula Area state-waters Pacific cod guideline harvest level (GHL), effort, harvest in pounds, and value, by gear type, 1997–2022.

Year	Gear	GHL	Vessels	Landings	Harvest ^a	% of GHL harvested	Price per pound ^b	Exvessel value
1997	Jig	9,424,762 ^c	43	178	349,468	100.2%	\$0.17	\$59,410
	Pot		51	469	9,097,805		\$0.19	\$1,728,583
1998	Jig	1,352,205	29	126	438,320	32.4%	\$0.16	\$70,131
	Pot	7,662,497	49	309	8,192,803	106.9%	\$0.17	\$1,392,777
1999	Jig	1,953,737	25	166	706,952	36.2%	\$0.29	\$205,016
	Pot	11,071,174	52	388	11,115,028	100.4%	\$0.26	\$2,889,907
2000	Jig	2,273,517	28	145	757,953	33.3%	\$0.28	\$212,227
	Pot	12,883,263	65	505	14,286,151	110.9%	\$0.30	\$4,285,845
2001	Jig	2,017,230	69	417	3,402,427	168.7%	\$0.24	\$816,582
	Pot	11,430,968	55	311	10,421,593	91.2%	\$0.25	\$2,605,398
2002	Jig	1,857,257	63	318	2,045,894	110.2%	\$0.24	\$491,015
	Pot	10,524,455	49	276	10,669,572	101.4%	\$0.21	\$2,240,610
2003	Jig	1,703,071	65	413	3,633,007	213.3%	\$0.27	\$980,912
	Pot	9,650,736	41	191	7,927,656	82.1%	\$0.27	\$2,140,467
2004	Jig	1,869,244	51	317	1,671,461	89.4%	\$0.23	\$384,436
	Pot	10,592,385	43	277	10,770,980	101.7%	\$0.23	\$2,477,325
2005	Jig	1,729,196	40	262	1,230,517	71.2%	\$0.25	\$307,629
	Pot	9,798,776	39	267	10,206,340	104.2%	\$0.25	\$2,551,585
2006	Jig	2,220,193	12	36	99,552	4.5%	\$0.36	\$35,839
	Pot	12,581,092	43	350	11,640,183	92.5%	\$0.36	\$4,190,466
2007	Jig	2,220,193	14	59	254,178	11.4%	\$0.47	\$119,464
	Pot	12,581,092	46	406	12,423,973	98.8%	\$0.47	\$5,839,267
2008	Jig	2,143,885	52	310	1,401,011	65.3%	\$0.57	\$798,576
	Pot	12,148,683	48	390	11,901,039	98.0%	\$0.56	\$6,664,582
2009	Jig	1,783,016	26	185	1,093,382	61.3%	\$0.23	\$251,478
	Pot	10,103,758	47	329	10,500,742	103.9%	\$0.26	\$2,730,193
2010	Jig	2,288,812	34	294	2,315,081	101.1%	\$0.25	\$578,770
	Pot	12,969,933	38	240	12,973,186	100.0%	\$0.25	\$3,243,297
2011	Jig	2,511,616	42	271	2,443,043	97.3%	\$0.28	\$684,052
	Pot	14,232,492	49	280	14,363,262	100.9%	\$0.29	\$4,165,346
2012	Jig	2,317,499	48	345	1,989,884	85.9%	\$0.34	\$676,561
	Pot	13,132,496	53	299	13,366,884	101.8%	\$0.34	\$4,544,741

-continued-

Table 16.—Page 2 of 2.

Year	Gear	GHL	Vessels	Landings	Harvest ^a	% of GHL harvested	Price per pound ^b	Exvessel value
2013	Jig	2,338,002	38	281	2,198,511	94.0%	\$0.27	\$593,598
	Pot	13,248,680	37	248	13,384,834	101.0%	\$0.27	\$3,613,905
2014	Jig	3,248,563	39	295	3,143,144	96.8%	\$0.28	\$880,080
	Pot	18,408,522	38	321	18,805,994	102.2%	\$0.29	\$5,453,738
2015	Jig	3,839,549	35	323	2,215,841	57.7%	\$0.27	\$598,277
	Pot	21,757,443	42	436	21,651,744	99.5%	\$0.28	\$6,062,488
2016	Jig	4,018,222	17	121	430,479	10.7%	\$0.27	\$116,229
	Pot	22,769,927	38	498	22,390,711	98.3%	\$0.27	\$6,045,492
2017	Jig	3,600,321	7	24	54,935	1.5%	\$0.31	\$17,030
	Pot	20,401,820	42	546	20,141,256	98.7%	\$0.31	\$6,243,789
2018	Jig	801,791	17	84	390,736	48.7%	\$0.41	\$160,202
	Pot	4,543,482	25	99	4,958,500	109.1%	\$0.42	\$2,082,570
2019	Jig	757,247	21	82	358,447	47.3%	\$0.48	\$172,055
	Pot	4,291,067	24	93	4,716,527	109.9%	\$0.47	\$2,216,768
2020	Jig	318,686	15	94	375,110	117.7%	\$0.40	\$150,044
	Pot	1,805,887	19	54	1,676,128	92.8%	\$0.42	\$703,974
2021	Jig	792,267	18	124	637,494	80.5%	\$0.39	\$248,623
	Pot	4,489,514	28	89	4,053,162	90.3%	\$0.41	\$1,661,796
2022	Jig	986,316	10	55	516,879	52.4%	\$0.48	\$248,102
	Pot	5,589,124	31	135	5,296,833	94.8%	\$0.47	\$2,489,512

Notes: Weights reported in whole fish pounds. Discards at sea excluded.

^a Harvest may include landings made after allocation rollovers.

^b Price per pound calculated from whole fish pounds sold, excluding bait and meal.

^c Total GHL; no GHL allocation by gear type during 1997 season.

Table 17.—Pacific cod effort and harvest in pounds by statistical area from the South Alaska Peninsula Area state-waters season, 2022.

Statistical area	Vessels	Landings ^a	Harvest
635434	9	38	1,635,951
605502	14	29	1,080,585
605504	16	37	1,028,678
625401	4	17	725,403
605501	7	11	189,535
635432	3	3	186,015
605432	3	3	132,251
605507	6	24	117,383
595533	3	4	76,397
595503	3	4	51,263
Other ^b	7	27	590,251
Total	41	190	5,813,712

Notes: Weights reported in whole fish pounds. Discards at sea excluded.
South Alaska Peninsula Area state-waters statistical areas for groundfish can be found in Appendix B3.

^a Some landings include multiple statistical areas.

^b Total of 9 statistical areas combined due to confidentiality.

Table 18.—South Alaska Peninsula Area state-waters Pacific cod fishery dates and management actions, by gear type, 1997–2022.

Year	Fishery dates and management actions	
1997	<i>Pot Gear Fishery Dates:</i> April 4–December 22 <i>Management Actions:</i> October 31 - Vessel size limit, gear limits, and exclusive vessel registration removed December 22 - Pot and jig gear seasons closed when GHL was attained	<i>Jig Gear Fishery Dates:</i> April 4–December 22
1998	<i>Pot Gear Fishery Dates:</i> March 10–April 16 <i>Management Actions:</i> April 16 - Pot gear season closed when GHL was attained	<i>Jig Gear Fishery Dates:</i> March 10–December 31
1999	<i>Pot Gear Fishery Dates:</i> March 15–April 11 October 31–December 31 <i>Management Actions:</i> April 11 - Pot gear season closed when GHL was attained October 31 - Allocation rollover; reopened pot gear season November 10 - Gear limits removed	<i>Jig Gear Fishery Dates:</i> March 15–December 31
2000	<i>Pot Gear Fishery Dates:</i> March 11–April 8 <i>Management Actions:</i> April 8 - Pot gear season closed when GHL was attained September 19 - Jig gear season closed when GHL was attained	<i>Jig Gear Fishery Dates:</i> March 11–September 19
2001	<i>Pot Gear Fishery Dates:</i> March 6–April 13 <i>Management Actions:</i> April 13 - Pot gear season closed when GHL was attained June 12 - Jig gear season closed when GHL was attained	<i>Jig Gear Fishery Dates:</i> March 6–June 12
2002	<i>Pot Gear Fishery Dates:</i> March 5–March 24 <i>Management Actions:</i> March 24 - Pot gear season closed when GHL was attained April 26 - Jig gear season closed when GHL was attained	<i>Jig Gear Fishery Dates:</i> March 5–April 26
2003	<i>Pot Gear Fishery Dates:</i> February 24–March 11 <i>Management Actions:</i> March 11 - Pot gear season closed when GHL was attained April 22 - Jig gear season closed when GHL was attained	<i>Jig Gear Fishery Dates:</i> February 24–April 22

-continued-

Table 18.–Page 2 of 4.

Year	Fishery dates and management actions	
2004	<i>Pot Gear Fishery Dates:</i> March 2–March 24 <i>Management Actions:</i> March 24 - Pot gear season closed when GHL was attained April 14 - Jig gear season closed when GHL was attained	<i>Jig Gear Fishery Dates:</i> March 2–April 14
2005	<i>Pot Gear Fishery Dates:</i> March 3–March 24 <i>Management Actions:</i> March 24 - Pot gear season closed when GHL was attained September 1 - Jig gear season closed for parallel B season	<i>Jig Gear Fishery Dates:</i> March 3–September 1
2006	<i>Pot Gear Fishery Dates:</i> March 9–March 29 April 4–April 7 <i>Management Actions:</i> March 29 - Pot gear season closed when GHL was expected to be attained April 4 - Pot gear season reopened April 7 - Pot gear season closed when GHL was attained September 1 - Jig gear season closed for parallel B season	<i>Jig Gear Fishery Dates:</i> March 9–September 1
2007	<i>Pot Gear Fishery Dates:</i> March 15–April 17 <i>Management Actions:</i> April 17 - Pot gear season closed when GHL was attained September 1 - Jig gear season closed for parallel B season	<i>Jig Gear Fishery Dates:</i> March 15–September 1
2008	<i>Pot Gear Fishery Dates:</i> March 7–April 1 <i>Management Actions:</i> April 1 - Pot gear season closed when GHL was attained September 1 - Jig gear season closed for parallel B season	<i>Jig Gear Fishery Dates:</i> March 7–September 1
2009	<i>Pot Gear Fishery Dates:</i> March 4–April 4 <i>Management Actions:</i> April 4 - Pot gear season closed when GHL was attained September 1 - Jig gear season closed for parallel B season	<i>Jig Gear Fishery Dates:</i> March 4–September 1
2010	<i>Pot Gear Fishery Dates:</i> March 5–March 23 <i>Management Actions:</i> March 23 - Pot gear season closed when GHL was attained May 27 - Jig gear season closed when GHL was attained	<i>Jig Gear Fishery Dates:</i> March 5–May 27

-continued-

Table 18.—Page 3 of 4.

Year	Fishery dates and management actions	
2011	<i>Pot Gear Fishery Dates:</i> February 25–March 11 <i>Management Actions:</i> March 11 - Pot gear season closed when GHL was attained April 26 - Jig gear season closed when GHL was attained	<i>Jig Gear Fishery Dates:</i> February 25–April 26
2012	<i>Pot Gear Fishery Dates:</i> March 7–March 22 <i>Management Actions:</i> March 21 - Jig gear season opened; weather delay March 19–20 March 22 - Pot gear season closed when GHL was attained June 10 - Jig gear season closed for parallel B season	<i>Jig Gear Fishery Dates:</i> March 21–June 10
2013	<i>Pot Gear Fishery Dates:</i> March 9–March 22 <i>Management Actions:</i> March 9 - Pot gear season opened; weather delay March 7 and 8 March 22 - Pot gear season closed when GHL was attained July 16 - Jig gear season closed for parallel B season	<i>Jig Gear Fishery Dates:</i> March 15–July 16
2014	<i>Pot Gear Fishery Dates:</i> March 7–March 24 <i>Management Actions:</i> March 20 - Jig gear season opened; weather delay March 15–19 March 24 - Pot gear season closed when GHL was attained May 16 - Jig gear season closed for parallel B season	<i>Jig Gear Fishery Dates:</i> March 20–May 16
2015	<i>Pot Gear Fishery Dates:</i> March 7–March 31 <i>Management Actions:</i> March 18 - Jig gear season opened; weather delay March 15–18 March 31 - Pot gear season closed when GHL was attained	<i>Jig Gear Fishery Dates:</i> March 18–December 31
2016	<i>Pot Gear Fishery Dates:</i> March 7–September 1 <i>Management Actions:</i> September 1 - Pot gear season closed to coordinate with parallel B-season opening	<i>Jig Gear Fishery Dates:</i> March 15–December 31
2017	<i>Pot Gear Fishery Dates:</i> March 7–September 1 <i>Management Actions:</i> September 1 - Pot gear season closed to coordinate with parallel B-season opening	<i>Jig Gear Fishery Dates:</i> March 17–December 31

-continued-

Table 18.–Page 4 of 4.

Year	Fishery dates and management actions	
2018	<i>Pot Gear Fishery Dates:</i> March 10–March 17 <i>Management Actions:</i> March 10 - Pot gear season opened; weather delay March 7–9 March 16 - Jig gear season opened; weather delay March 15 March 17 - Pot gear season closed when GHL was attained June 4 - Jig gear season closed when GHL was attained	<i>Jig Gear Fishery Dates:</i> March 16–June 4
2019	<i>Pot Gear Fishery Dates:</i> March 7–March 13 <i>Management Actions:</i> March 13 - Pot gear season closed when GHL was attained April 22 - Jig gear season closed when GHL was attained	<i>Jig Gear Fishery Dates:</i> March 13–April 22
2020	<i>Pot Gear Fishery Dates:</i> March 7–March 27 <i>Management Actions:</i> March 27 - Pot gear season closed when GHL was attained	<i>Jig Gear Fishery Dates:</i> January 1–December 31
2021	<i>Pot Gear Fishery Dates:</i> March 9–March 15 <i>Management Actions:</i> March 9 - Pot gear season opened; weather delay March 7 and 8 March 15 - Pot gear season closed when GHL was attained	<i>Jig Gear Fishery Dates:</i> March 15–December 31
2022	<i>Pot Gear Fishery Dates:</i> March 7–March 16 <i>Management Actions:</i> March 7 - Pot gear season opened March 16 - Pot gear season closed when GHL was attained	<i>Jig Gear Fishery Dates:</i> March 15–December 31

Note: GHL = guideline harvest level.

Table 19.—Kodiak, Chignik, and South Alaska Peninsula Areas black rockfish regulatory development and management actions, 1997–2022.

Year	Regulation
Pre-1997	– Black rockfish managed by NMFS
1997	– NPFMC removed black rockfish from Pelagic Shelf Rockfish Group – State-waters managed separately from federal waters: Kodiak Area GHL established at 170,000 pounds; Chignik Area and SAP Area Eastern District GHLs established at 100,000 pounds
1998	– State assumed management authority from NMFS for black rockfish in the Exclusive Economic Zone – Kodiak and Chignik Areas and SAP Eastern District established as non-exclusive registration areas – Kodiak Area divided into 7 districts each with separate GHLs
1999	– Kodiak Area Northeast District GHL reduced from 25,000 pounds to 20,000 pounds
2003	– Kodiak Area: regulation stating that vessels may not be concurrently registered for black rockfish and Pacific cod established – Kodiak Area trip limit established at 5,000 pounds per five days – Chignik Area designated superexclusive registration area – Chignik Area divided into 3 management districts
2004	– Kodiak Area Westside District GHL reduced from 30,000 pounds to 20,000 pounds
2005	– SAP Area Eastern District divided into 3 management sections – Kodiak Area incidental trip limit of 2,500 pounds established for vessels fishing during other directed jig groundfish fisheries in Kodiak Area – Kodiak Area logbooks mandated
2006	– SAP Area Eastern District GHL reduced from 100,000 pounds to 75,000 pounds
2007	– Kodiak Area Northeast, Afognak, and Southeast Districts incidental trip limit reduced from 2,500 pounds to 1,000 pounds
2011	– Kodiak Area Rockfish Management Plan revised: incidental trip limits repealed and replaced with bycatch percentages established by EO; trip limit increased from 5,000 to 7,000 pounds after August 14 by EO; reporting requirements and trip limits for catcher-processors established
2012	– Kodiak Area Southwest and Mainland District GHLs eliminated; harvest as bycatch only
2014	– Kodiak Area Westside District GHL reduced from 20,000 pounds to 10,000 pounds
2015	– Kodiak Area Afognak District GHL reduced from 35,000 pounds to 30,000 pounds
2020	– Kodiak Area gear limit increased from 5 to 6 mechanical jig machines
2021	– Kodiak Area Northeast District GHL reduced from 20,000 pounds to 10,000 pounds – Kodiak Area Southeast District GHL increased from 30,000 pounds to 40,000 pounds

Notes: NMFS = National Marine Fisheries Service. NPFMC = North Pacific Fishery Management Council. GHL = guideline harvest level. SAP = South Alaska Peninsula. EO = emergency order.

Table 20.—Kodiak, Chignik, and South Alaska Peninsula Areas black rockfish guideline harvest level (GHL), harvest in pounds, and fishery closure date, by district, 2022.

Area/District	GHL	Harvest			Directed fishery closure date
		Directed	Bycatch	Total ^a	
Kodiak Area					
Afognak	30,000	30,096	CF	30,096	September 6
Northeast	10,000	CF	CF	CF	March 2
Eastside	30,000	CF	CF	30,388	September 6
Southeast	40,000	37,982	0	37,982	December 31
Southwest	Bycatch only	0	0	0	NA
Westside	10,000	CF	0	CF	December 31
Mainland	Bycatch only	0	0	0	NA
Total ^a	120,000	68,078	12,373	98,466	
Chignik Area					
Sutwik Island	45,000 ^b	0	0	0	December 31
Chignik Bay	45,000 ^b	0	0	0	December 31
Mitrofanina	45,000 ^b	0	0	0	December 31
Total	100,000	0	0	0	
South Alaska Peninsula Area					
Eastern	75,000	0	0	0	December 31

Notes: Weights reported in whole fish pounds. Discards at sea excluded. CF = confidential; data are confidential when fewer than 3 vessels or processors participated. NA = not applicable.

^a Totals do not include confidential data except in the Eastside District where total harvest is not confidential.

^b District harvest cap.

Table 21.–Kodiak Area black rockfish jig effort, guideline harvest level (GHL), harvest in pounds, and value, 1990–2022.

Year ^a	Vessels	Landings	GHL	Harvest	Price per pound ^b	Exvessel value
1990	2	8	NA	CF	CF	NA
1991	55	317	NA	782,133	\$0.25	\$195,533
1992	34	167	NA	476,623	\$0.24	\$114,390
1993	14	58	NA	105,244	\$0.24	\$25,259
1994	23	126	NA	116,724	\$0.37	\$43,188
1995	33	183	NA	311,455	\$0.44	\$137,040
1996	43	167	NA	301,798	\$0.46	\$138,827
1997	50	297	NA	221,664	\$0.38	\$84,232
1998	64	348	190,000	196,548	\$0.33	\$64,861
1999	70	300	185,000	128,008	\$0.42	\$53,763
2000	72	260	185,000	245,891	\$0.44	\$108,192
2001	36	168	185,000	213,629	\$0.50	\$106,815
2002	25	123	185,000	196,166	\$0.43	\$84,351
2003	33	90	185,000	84,237	\$0.36	\$30,325
2004	37	124	185,000	122,180	\$0.39	\$47,650
2005	23	85	175,000	116,726	\$0.40	\$46,690
2006	25	97	175,000	123,443	\$0.42	\$51,846
2007	21	96	175,000	135,386	\$0.41	\$55,508
2008	17	91	175,000	132,325	\$0.53	\$70,132
2009	18	90	175,000	122,136	\$0.41	\$50,076
2010	12	74	175,000	103,630	\$0.39	\$40,416
2011	21	67	175,000	124,900	\$0.39	\$48,711
2012	19	53	135,000	80,940	\$0.42	\$33,995
2013	20	62	135,000	141,226	\$0.44	\$62,139
2014	17	74	125,000	109,053	\$0.46	\$50,164
2015	26	120	125,000	112,340	\$0.45	\$50,553
2016	45	192	120,000	132,181	\$0.50	\$66,091
2017	20	91	120,000	108,269	\$0.54	\$58,465
2018	8	65	120,000	107,725	\$0.44	\$47,399
2019	12	72	120,000	109,899	\$0.89	\$97,810
2020	12	67	120,000	117,306	\$0.79	\$92,672
2021	15	62	120,000	87,634	\$1.00	\$87,634
2022	9	35	120,000	98,466	\$1.00	\$98,466

Notes: Weights reported in whole fish pounds. Discards at sea excluded. CF = confidential; data are confidential when fewer than 3 vessels participated. NA = not applicable.

^a Prior to 1998, black rockfish were managed by the National Marine Fisheries Service (NMFS).

^b Price per pound based on whole fish pounds sold, excluding bait and meal.

Table 22.—Chignik Area black rockfish jig effort, guideline harvest level (GHL) harvest in pounds, and value, 1990–2022.

Year ^a	Vessels	Landings	GHL	Harvest	Price per pound ^b	Exvessel value
1990	0	0	NA	0	ND	ND
1991	0	0	NA	0	ND	ND
1992	0	0	NA	0	ND	ND
1993	0	0	NA	0	ND	ND
1994	0	0	NA	0	ND	ND
1995	5	6	NA	25,125	\$0.49	\$12,311
1996	11	25	NA	201,825	\$0.36	\$72,657
1997	9	39	NA	80,741	\$0.23	\$18,570
1998	10	30	100,000	87,712	\$0.28	\$24,559
1999	10	30	100,000	11,305	\$0.25	\$2,826
2000	7	14	100,000	95,572	\$0.43	\$41,096
2001	13	33	100,000	102,316	\$0.41	\$41,950
2002	7	15	100,000	81,015	\$0.41	\$33,216
2003	10	40	100,000	46,598	\$0.42	\$19,571
2004	6	26	100,000	99,122	\$0.27	\$26,763
2005	7	16	100,000	49,721	\$0.40	\$19,888
2006	2	4	100,000	CF	CF	CF
2007	2	7	100,000	CF	CF	CF
2008	1	4	100,000	CF	CF	CF
2009	2	2	100,000	CF	CF	CF
2010	1	5	100,000	CF	CF	CF
2011	1	1	100,000	CF	CF	CF
2012	1	1	100,000	CF	CF	CF
2013	0	0	100,000	0	ND	ND
2014	1	1	100,000	CF	CF	CF
2015	0	0	100,000	0	ND	ND
2016	1	1	100,000	CF	CF	CF
2017	1	5	100,000	CF	CF	CF
2018	0	0	100,000	0	ND	ND
2019	0	0	100,000	0	ND	ND
2020	1	4	100,000	CF	CF	CF
2021	1	2	100,000	CF	CF	CF
2022	0	0	100,000	0	ND	ND

Notes: Weights reported in whole fish pounds. Discards at sea excluded. CF = Confidential; data are confidential when fewer than 3 vessels participated. NA = Not Applicable. ND = No Data.

^a Prior to 1998, black rockfish were managed by the National Marine Fisheries Service (NMFS).

^b Price per pound based on whole fish pounds sold, excluding bait and meal.

Table 23.—South Alaska Peninsula Area Eastern District black rockfish jig effort, guideline harvest level (GHL), harvest in pounds, and value, 1990–2022.

Year ^a	Vessels	Landings	GHL	Harvest	Price per pound ^b	Exvessel value
1990	0	0	NA	0	ND	ND
1991	1	1	NA	CF	CF	CF
1992	0	0	NA	0	ND	ND
1993	0	0	NA	0	ND	ND
1994	0	0	NA	0	ND	ND
1995	8	49	NA	120,745	\$0.33	\$39,846
1996	19	78	NA	150,188	\$0.25	\$37,547
1997	9	32	NA	109,076	\$0.34	\$37,086
1998	6	18	100,000	84,145	\$0.29	\$24,402
1999	9	38	100,000	55,308	\$0.41	\$22,676
2000	20	73	100,000	94,797	\$0.35	\$33,179
2001	30	82	100,000	101,605	\$0.36	\$36,578
2002	9	30	100,000	102,114	\$0.29	\$29,613
2003	4	6	100,000	5,267	\$0.21	\$1,106
2004	15	24	100,000	8,925	\$0.26	\$2,321
2005	11	26	100,000	57,732	\$0.35	\$20,206
2006	3	8	75,000	7,015	\$0.37	\$2,596
2007	2	9	75,000	CF	CF	CF
2008	0	0	75,000	0	ND	ND
2009	3	3	75,000	705	\$0.25	\$176
2010	1	1	75,000	CF	CF	CF
2011	1	2	75,000	CF	CF	CF
2012	0	0	75,000	0	ND	ND
2013	2	4	75,000	CF	CF	CF
2014	0	0	75,000	0	ND	ND
2015	1	1	75,000	CF	CF	CF
2016	5	13	75,000	77,321	\$0.40	\$30,928
2017	3	21	75,000	45,127	\$0.40	\$18,051
2018	5	14	75,000	24,449	\$0.40	\$9,780
2019	4	8	75,000	15,916	\$0.45	\$7,162
2020	2	4	75,000	CF	CF	CF
2021	0	0	75,000	0	ND	ND
2022	0	0	75,000	0	ND	ND

Notes: Weights reported in whole fish pounds. Discards at sea excluded. CF = confidential; data are confidential when fewer than 3 vessels participated. NA = not applicable. ND = no data.

^a Prior to 1998, black rockfish were managed by the National Marine Fisheries Service (NMFS).

^b Price per pound based on whole fish pounds sold, excluding bait and meal.

Table 24.—Kodiak, Chignik, and South Alaska Peninsula Areas lingcod harvest in pounds, by gear type, 1988–2022.

Year	Jig	Longline	Pot	Trawl	Total ^a
1988	59	43	0	136,191	136,294
1989	69	0	0	14,324	14,394
1990	1,418	158	402	8,839	10,816
1991	8,375	501	386	663	9,925
1992	5,569	4,261	72	10,897	20,799
1993	0	511	0	4,778	5,289
1994	4,820	803	0	229	5,852
1995	34,574	3,467	79	1,191	39,311
1996	43,403	7,878	0	10,929	62,209
1997	12,637	6,499	4,251	5,267	28,654
1998	5,756	1,771	0	3,514	11,041
1999	1,358	3,802	4,189	4,593	13,941
2000	3,400	6,734	2,676	2,127	14,938
2001	527	4,063	3,597	5,688	13,875
2002	29	6,131	2,749	5,380	14,290
2003	229	9,740	0	5,069	15,037
2004	2,990	6,865	205	16,731	26,791
2005	772	18,831	7,983	14,078	41,663
2006	289	16,028	20,127	12,670	49,114
2007	35	28,058	32,024	45,420	105,538
2008	1,518	31,637	21,278	466,826	521,259
2009	373	28,112	3,614	65,182	97,281
2010	812	31,204	1,935	33,594	67,545
2011	123	25,045	14,962	82,323	122,454
2012	297	18,815	69,657	69,683	158,453
2013	0	14,341	19,222	29,166	62,729
2014	0	11,285	23,949	34,148	69,382
2015	0	5,098	12,822	44,669	62,589
2016	CF	5,200	6,838	36,532	48,570
2017	CF	4,837	3,376	16,715	24,928
2018	CF	8,571	662	37,222	46,455
2019	154	4,197	CF	34,843	39,194
2020	157	4,816	1,550	34,854	41,377
2021	1,064	6,635	437	32,639	40,775
2022	CF	6,509	CF	32,457	39,203

Notes: Weights reported in whole fish pounds. Discards at sea excluded. CF = confidential; data are confidential when fewer than 3 vessels participated.

^a Total fish pounds does not include confidential data except total fish pounds in 2022 are not confidential.

Table 25.—Central Gulf of Alaska (CGOA) and Western Gulf of Alaska (WGOA) walleye pollock fishery dates, 2018–2022.

NMFS area	2018	2019	2020	2021	2022
CGOA Area 630	Jan 21–Feb 14	Jan 20–Feb 10	Jan 20–Feb 23	Jan 20–April 14	Jan 20–April 22
	Mar 10–Mar 10	Mar 10–Mar 11	Mar 9–Mar 10	Sep 1–Nov 1	Sep 1–Sept 21
	Aug 25–Sep 30	Aug 25–Sep 30	Mar 10–Mar 11		
	Oct 1–Oct 31	Oct 1–Nov 1	Aug 25–Sep 30		
			Oct 1–Oct 17		
CGOA Area 620	Jan 20–Feb 23	Jan 20–Feb 8	Jan 20–Feb 19	Jan 20–May 31	Jan 20–May 31
	Mar 10–Mar 23	Mar 10–Mar 21	Mar 10–Mar 18	Sep 1–Nov 1	Sep 1–Oct 21
	Aug 25–Sep 1	Aug 25–Sep 30	Aug 25–Sep 30		
	Oct 1–Oct 7	Oct 1–Nov 1	Oct 1–Oct 20		
			Oct 27–Oct 29		
WGOA Area 610	Jan 20–Feb 25	Jan 20–Mar 6	Mar 9–Mar 10	Sep 1–Oct 15 ^a	Sep 1–Sep 28 ^a
	Mar 10–Mar 12	Mar 10–Mar 29	Mar 10–Mar 14		
	Aug 25–Sep 3	Aug 25–Sep 8	Aug 25–Sep 3		
	Oct 1–Oct 13	Oct 1–Oct 8	Oct 1–Oct 6		
			Oct 27–Oct 29		

Notes: NMFS = National Marine Fisheries Service.

^a No directed fishing for A season, bycatch only.

Table 26.—Central Gulf of Alaska (CGOA) walleye pollock effort and harvest, in millions of pounds, 1995–2022.

Year	Vessels	Landings	Federal waters		State waters		Total harvest	Discards at sea
			Harvest	% of Total	Harvest	% of Total		
1995	108	810	65.04	87.9	8.98	12.1	74.02	1.25
1996	84	904	36.07	71.6	14.28	28.4	50.35	1.57
1997	107	1,528	83.37	68.7	37.91	31.3	121.28	1.91
1998	119	1,702	136.18	65.9	70.46	34.1	206.64	0.40
1999	101	1,293	107.75	72.7	40.36	27.3	148.12	0.52
2000	60	1,108	101.63	95.8	4.45	4.2	106.09	0.53
2001	74	1,160	69.00	79.4	17.88	20.6	86.88	0.29
2002	72	838	40.17	56.7	30.73	43.3	70.90	0.15
2003	61	730	55.30	77.0	16.56	23.0	71.86	0.17
2004	57	772	54.99	63.5	31.64	36.5	86.64	0.36
2005	53	820	79.13	76.9	23.77	23.1	102.90	0.29
2006	48	988	68.61	71.0	28.07	29.0	96.69	0.16
2007	42	894	53.87	74.2	18.77	25.8	72.65	0.28
2008	47	990	48.89	68.4	22.59	31.6	71.48	1.02
2009	43	821	35.05	65.3	18.66	34.7	53.71	0.62
2010	50	1,028	77.71	76.7	23.60	23.3	101.31	0.98
2011	56	1,061	110.15	90.5	11.59	9.5	121.74	1.67
2012	70	1,262	126.37	82.0	27.66	18.0	154.03	1.62
2013	66	1,385	157.05	85.9	25.73	14.1	182.78	3.00
2014	63	1,768	256.13	92.0	22.23	8.0	278.37	1.05
2015	60	1,746	243.92	83.4	48.46	16.6	292.38	0.96
2016	62	1,415	210.70	86.2	33.85	13.8	244.55	0.54
2017	54	1,503	283.95	96.8	9.30	3.2	293.25	1.37
2018	60	1,435	246.28	94.5	14.34	5.5	260.63	2.28
2019	59	1,279	180.05	92.9	13.83	7.1	193.88	2.25
2020	62	1,171	163.46	92.3	13.67	7.7	177.12	1.51
2021	52	926	156.25	94.9	8.45	5.1	164.70	1.71
2022	49	1,090	199.83	91.6	18.36	8.4	218.19	1.78

Notes: Harvest reported in whole fish pounds. Discards at sea excluded from all columns except the *Discards at sea* column.

Table 27.—Western Gulf of Alaska (WGOA) walleye pollock effort and harvest, in millions of pounds, 1995–2022.

Year	Vessels	Landings	Federal waters		State waters		Total harvest	Discards at sea
			Harvest	% of Total	Harvest	% of Total		
1995	92	351	43.36	66.0	22.32	34.0	65.69	0.84
1996	56	319	20.83	40.0	31.23	60.0	52.06	0.77
1997	84	333	42.56	68.1	19.90	31.9	62.47	0.71
1998	84	362	27.31	41.6	38.40	58.4	65.70	0.12
1999	80	432	24.86	47.1	27.96	52.9	52.82	0.25
2000	49	419	9.99	21.1	37.34	78.9	47.33	0.11
2001	51	548	17.53	26.0	50.00	74.0	67.53	0.07
2002	45	316	19.46	51.0	18.69	49.0	38.14	0.21
2003	41	262	16.86	45.5	20.18	54.5	37.04	0.12
2004	32	350	19.89	39.1	30.97	60.9	50.86	0.08
2005	36	502	34.36	50.6	33.50	49.4	67.85	0.12
2006	38	499	20.54	38.2	33.25	61.8	53.80	0.18
2007	38	413	18.03	47.3	20.12	52.7	38.15	0.05
2008	29	340	21.55	65.8	11.20	34.2	32.75	0.00
2009	35	309	9.74	31.8	20.93	68.2	30.68	0.11
2010	38	561	23.83	41.8	33.22	58.2	57.05	0.06
2011	35	502	21.34	47.4	23.64	52.6	44.98	0.15
2012	45	696	16.47	27.4	43.68	72.6	60.15	0.31
2013	40	402	7.23	43.0	9.58	57.0	16.81	0.17
2014	34	586	16.76	58.3	12.00	41.7	28.75	0.36
2015	33	790	45.34	72.0	17.67	28.0	63.01	0.04
2016	39	1155	98.42	73.2	35.97	26.8	134.39	0.14
2017	42	785	99.24	91.6	9.10	8.4	108.34	0.52
2018	36	554	57.03	84.9	10.14	15.1	67.17	0.72
2019	36	382	43.33	90.2	4.68	9.8	48.01	0.27
2020	33	319	33.58	80.5	8.12	19.5	41.70	0.16
2021	34	325	32.13	82.5	6.81	17.5	38.94	0.23
2022	33	390	36.45	71.1	14.79	28.9	51.24	0.25

Notes: Harvest reported in whole fish pounds. Discards at sea excluded from all columns except the *Discards at sea* column.

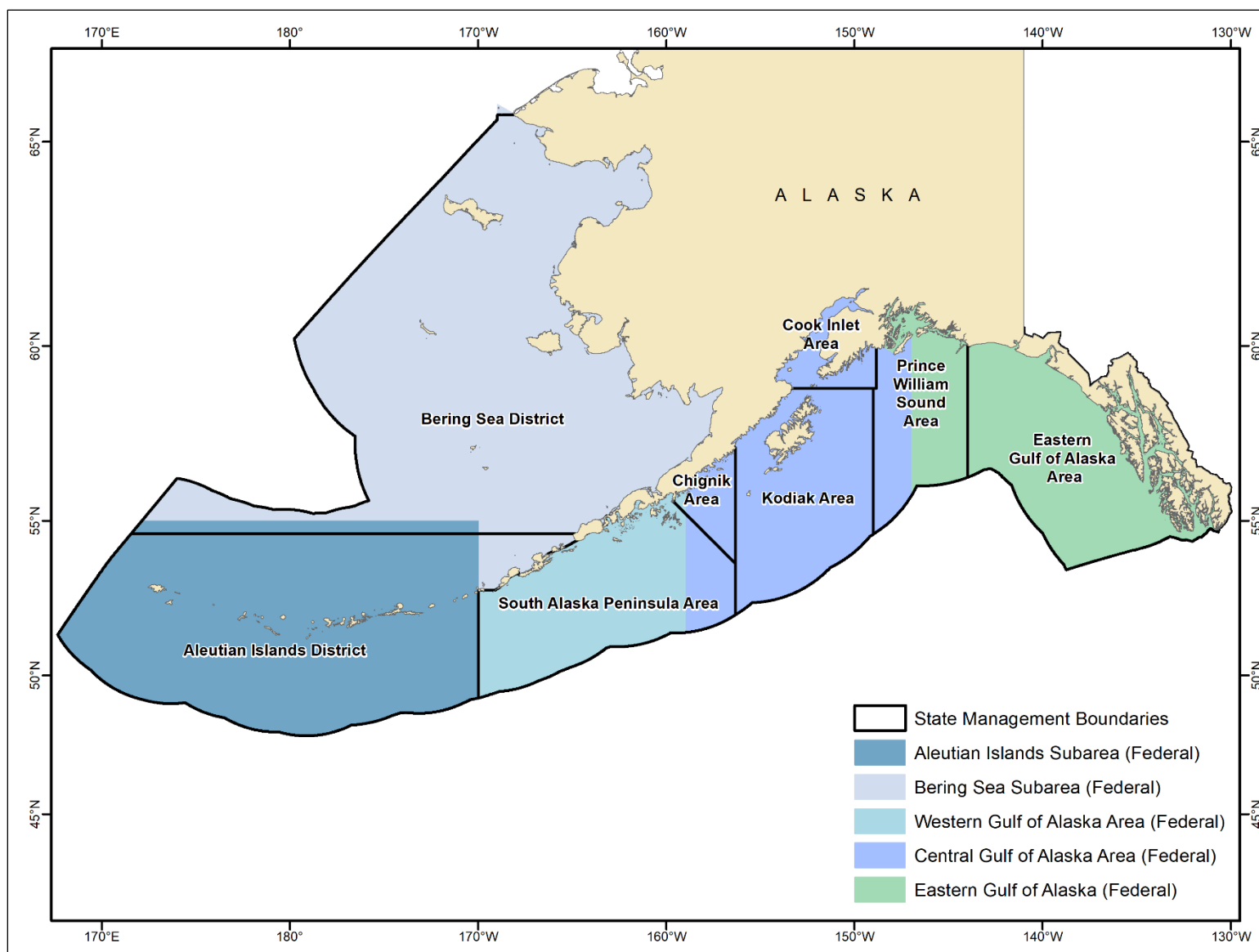


Figure 1.—Alaska Department of Fish and Game and National Marine Fisheries Service groundfish management areas.

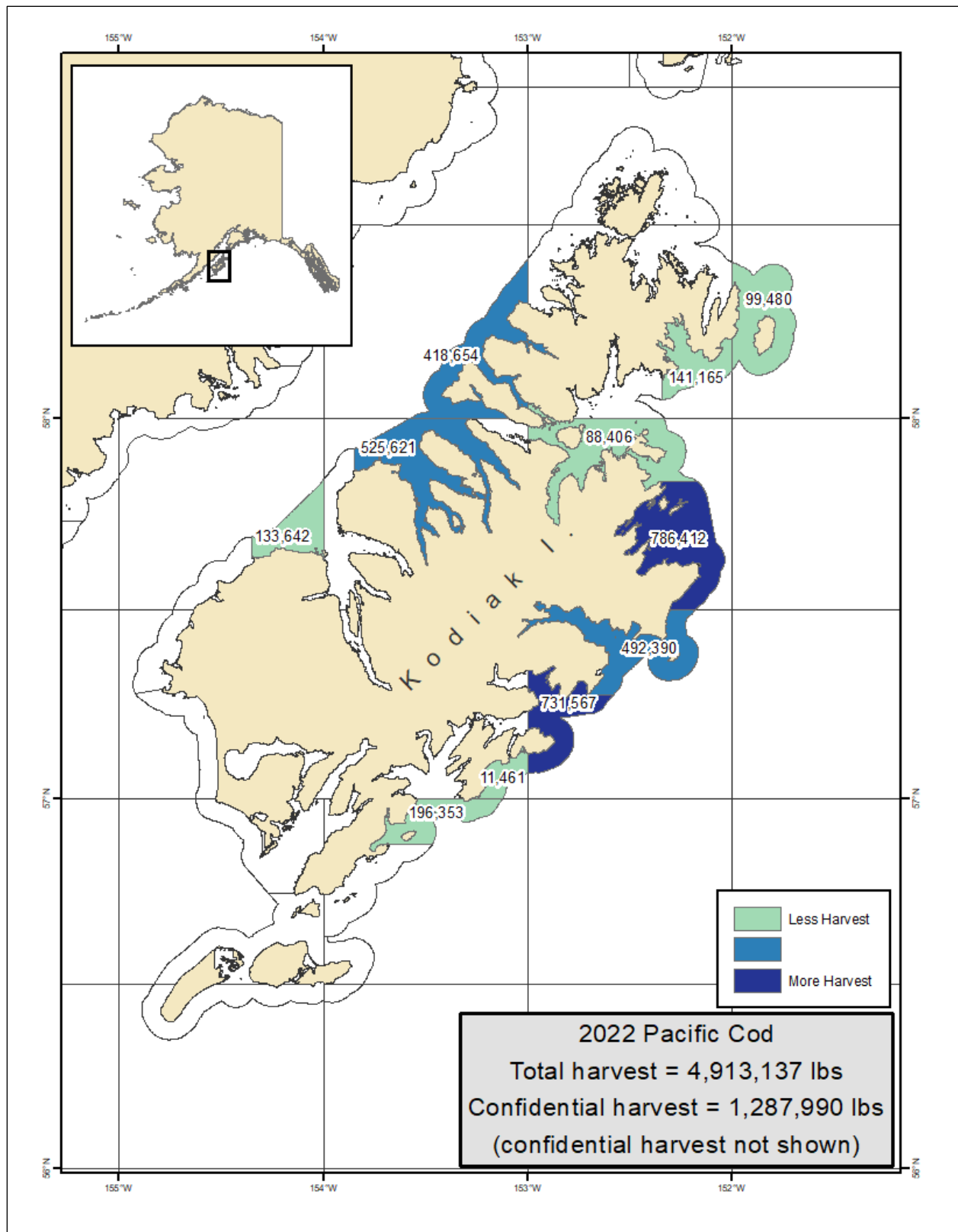


Figure 2.—Kodiak Area state-waters Pacific cod harvest, in pounds, by statistical area, 2022.

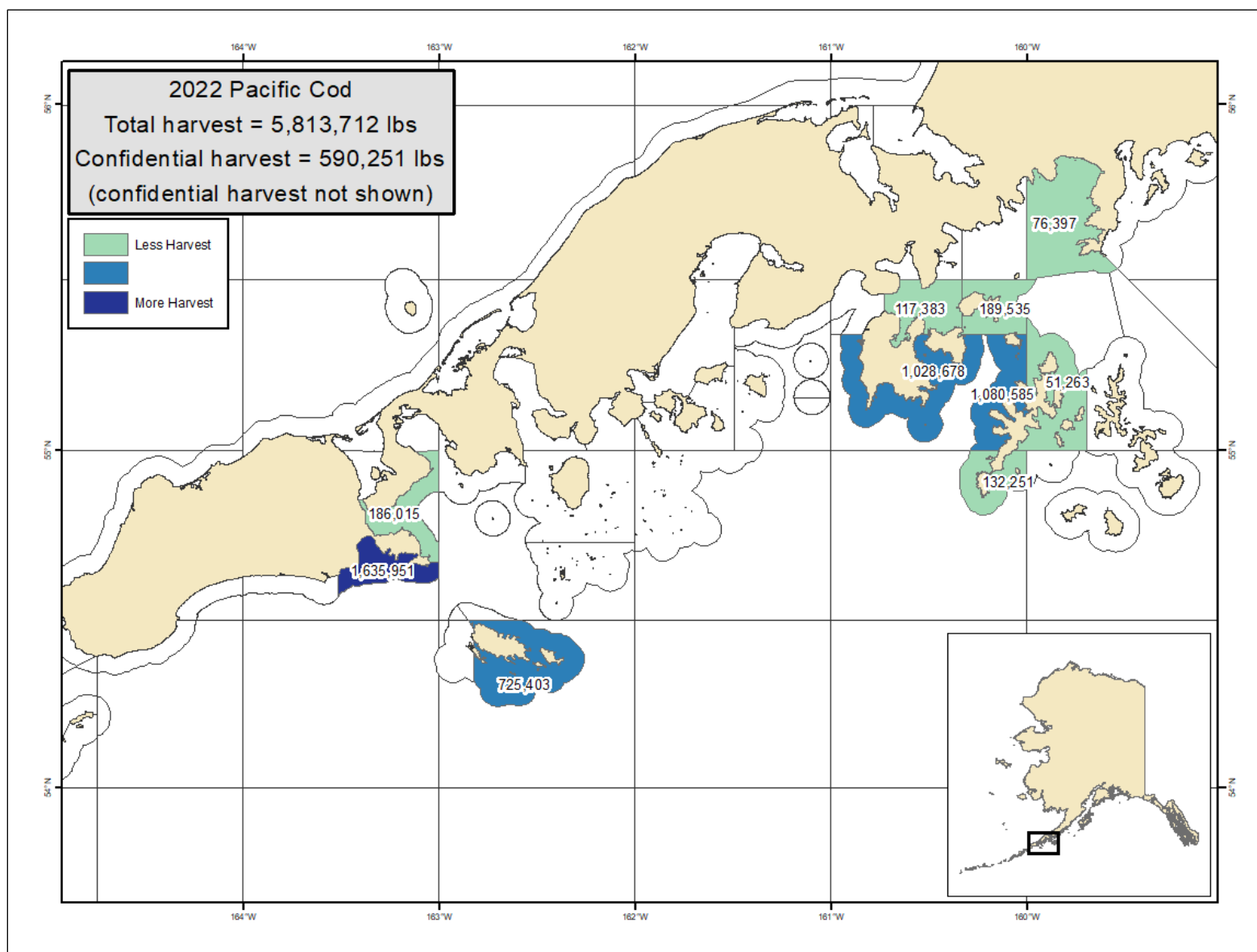


Figure 3.—South Alaska Peninsula Area state-waters Pacific cod harvest, in pounds, by statistical area, 2022.

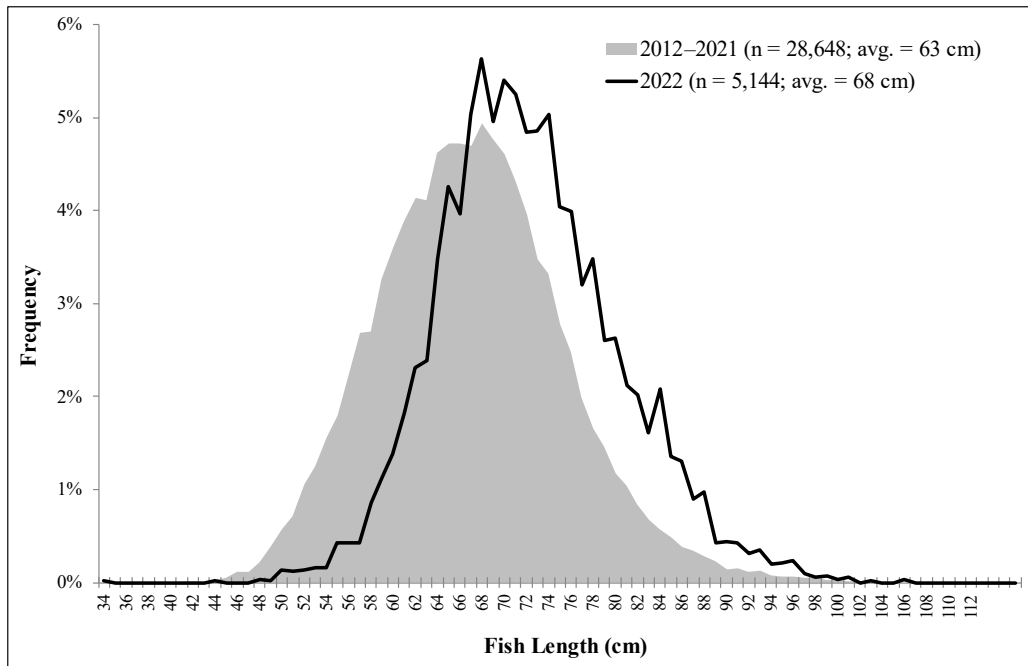


Figure 4.—Kodiak Area Pacific cod length frequency from state-waters fisheries, 2012–2022.

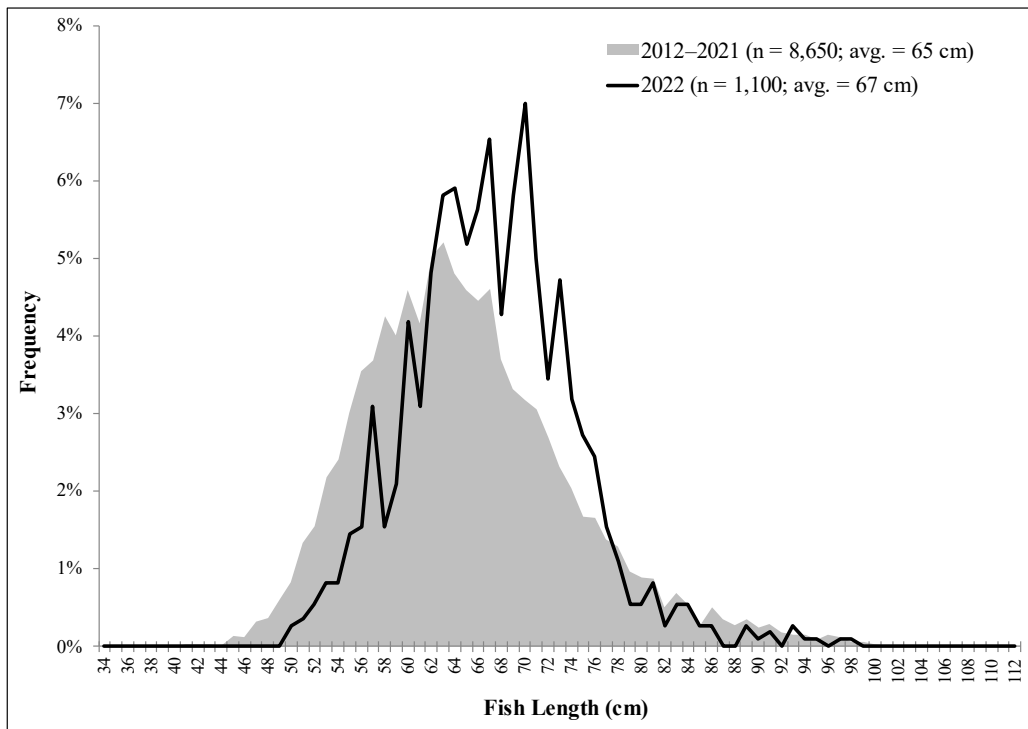


Figure 5.—Chignik Area Pacific cod length frequency from state-waters fisheries, 2012–2022.

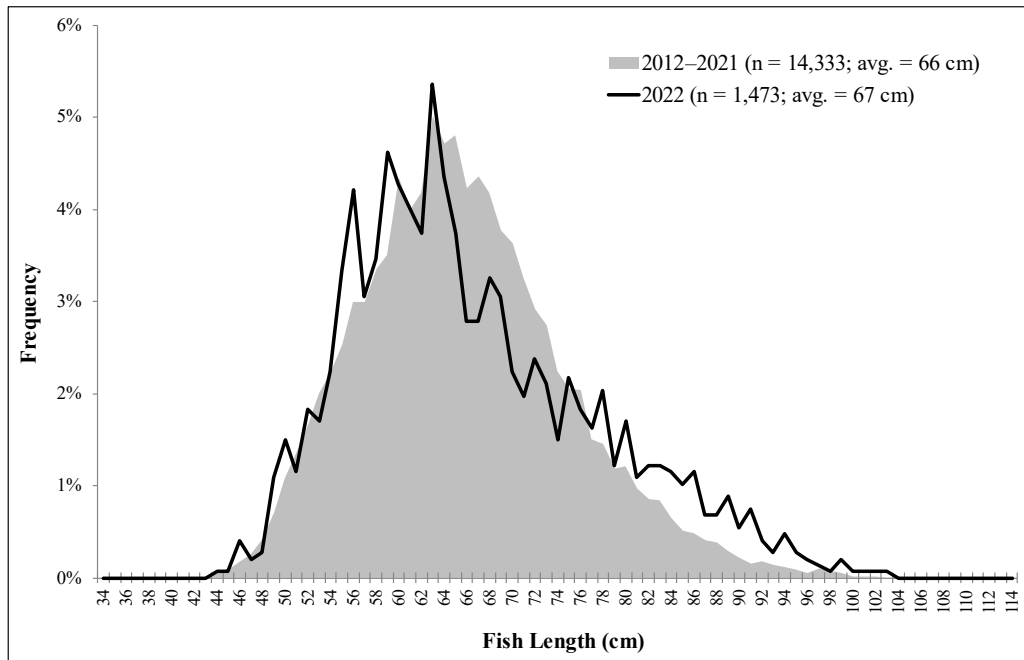


Figure 6.–South Alaska Peninsula Area Pacific cod length frequency from state-waters fisheries, 2012–2022.

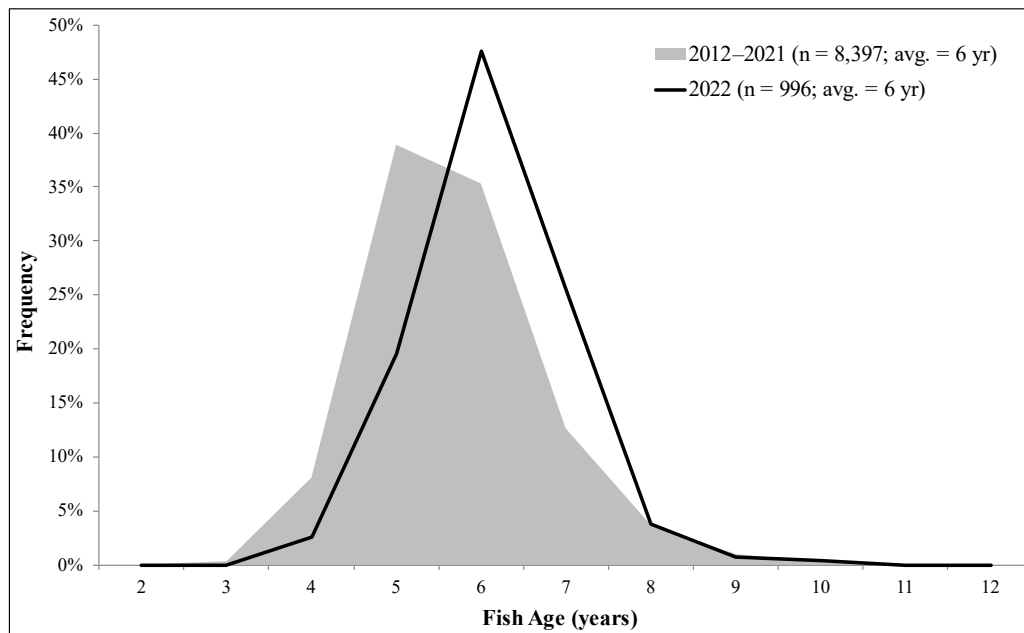


Figure 7.–Kodiak Area Pacific cod age composition from the state-waters fisheries, 2012–2022.

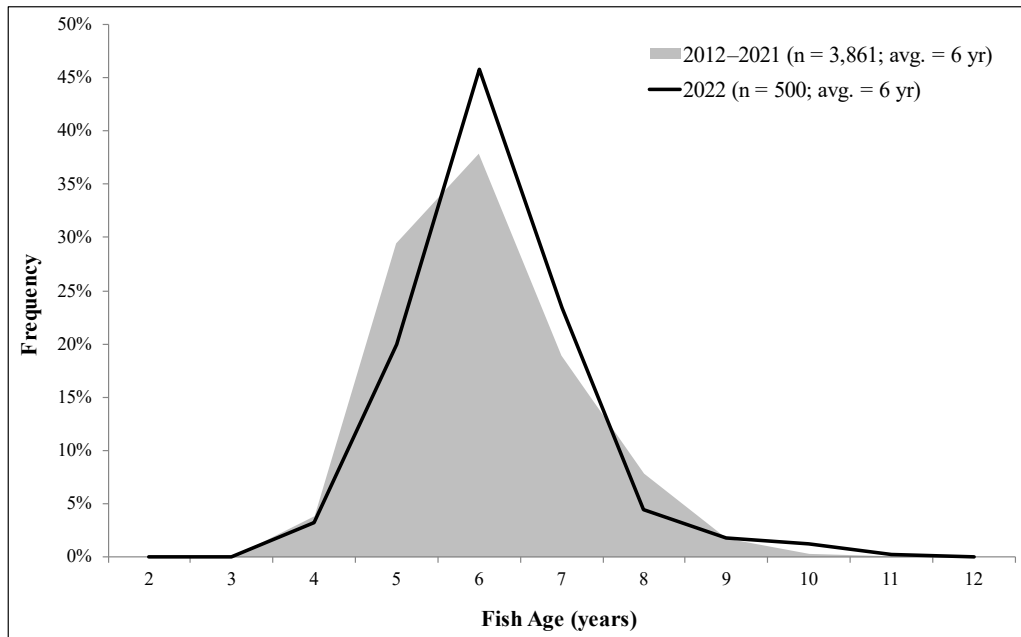


Figure 8.—Chignik Area Pacific cod age composition from the state-waters fisheries, 2012–2022.

Note: No age data for 2014.

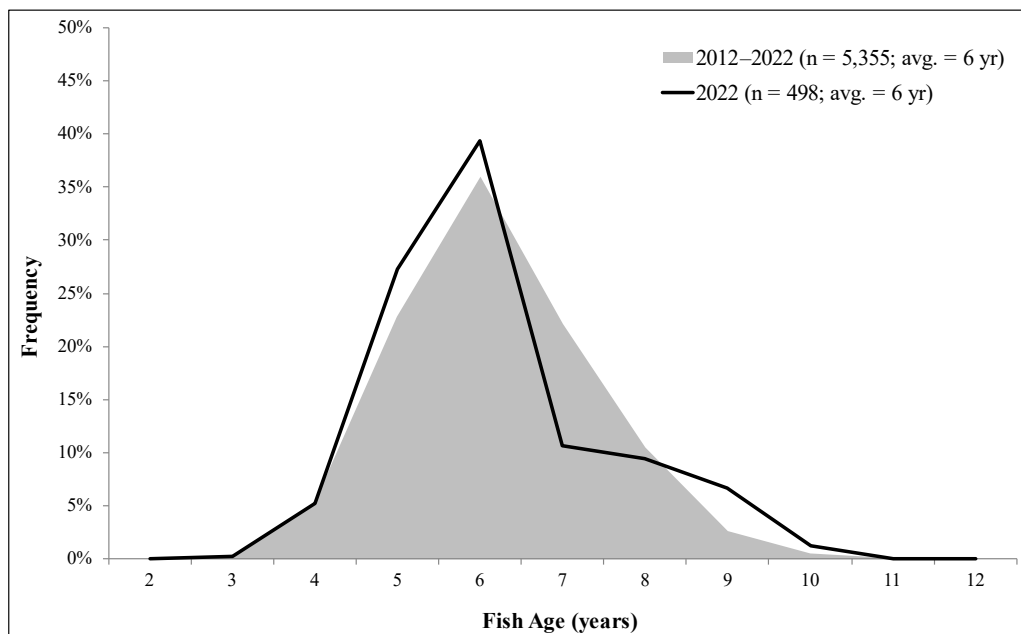


Figure 9.—South Alaska Peninsula Area Pacific cod age composition from the state-waters fisheries, 2012–2022.

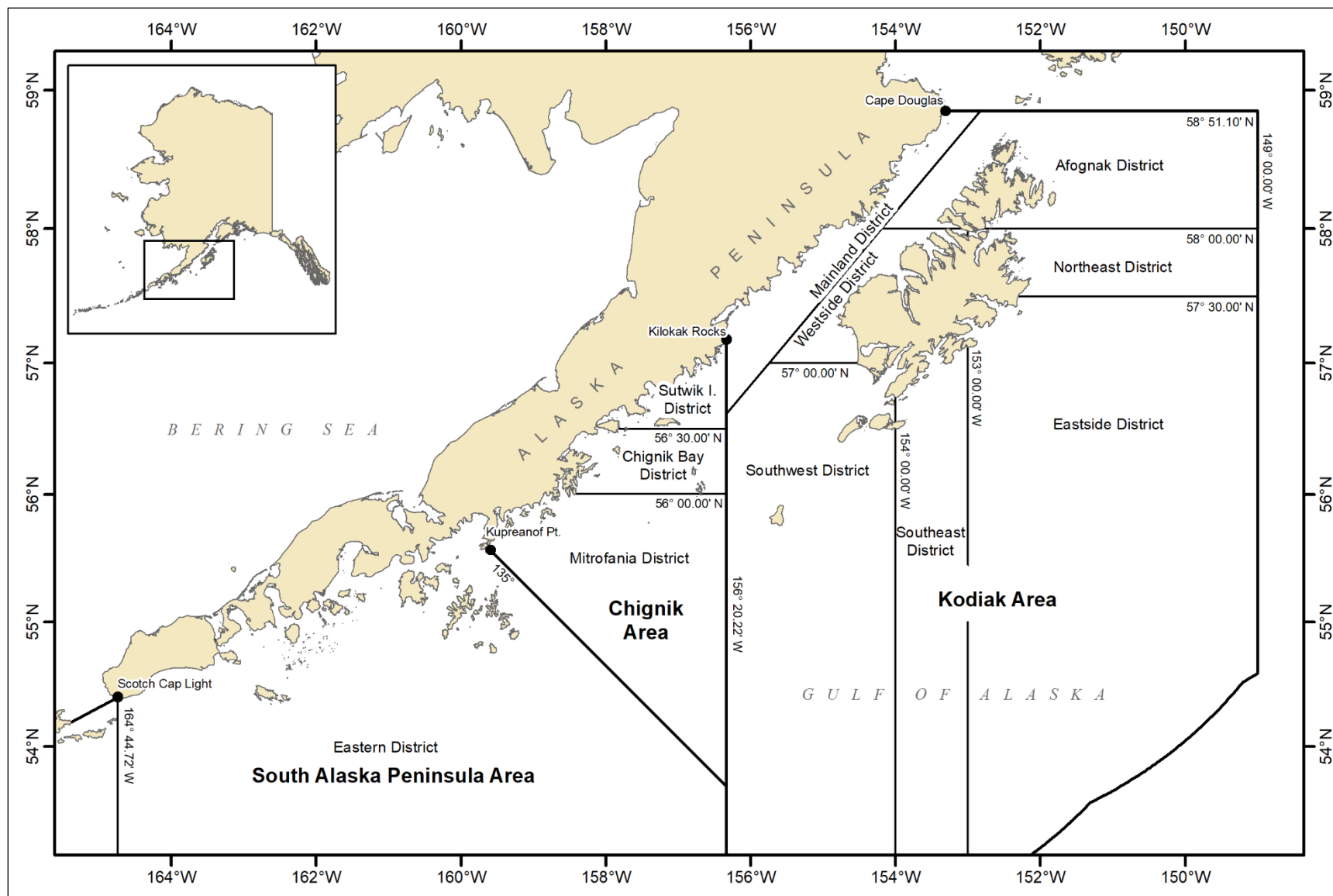


Figure 10.—Kodiak, Chignik, and South Alaska Peninsula black rockfish management areas and districts.

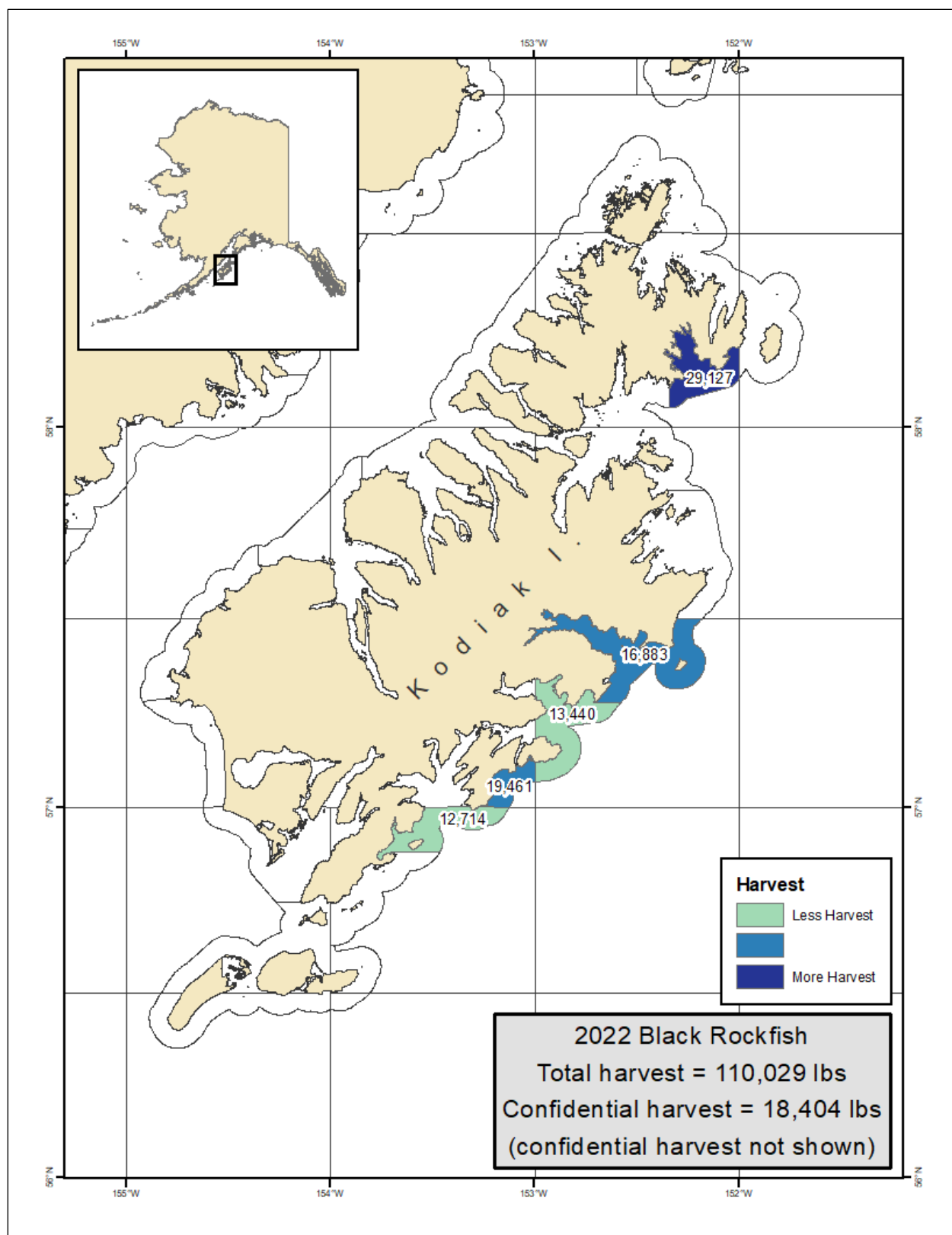


Figure 11.—Kodiak Area black rockfish harvest, in pounds, by statistical area, 2022.

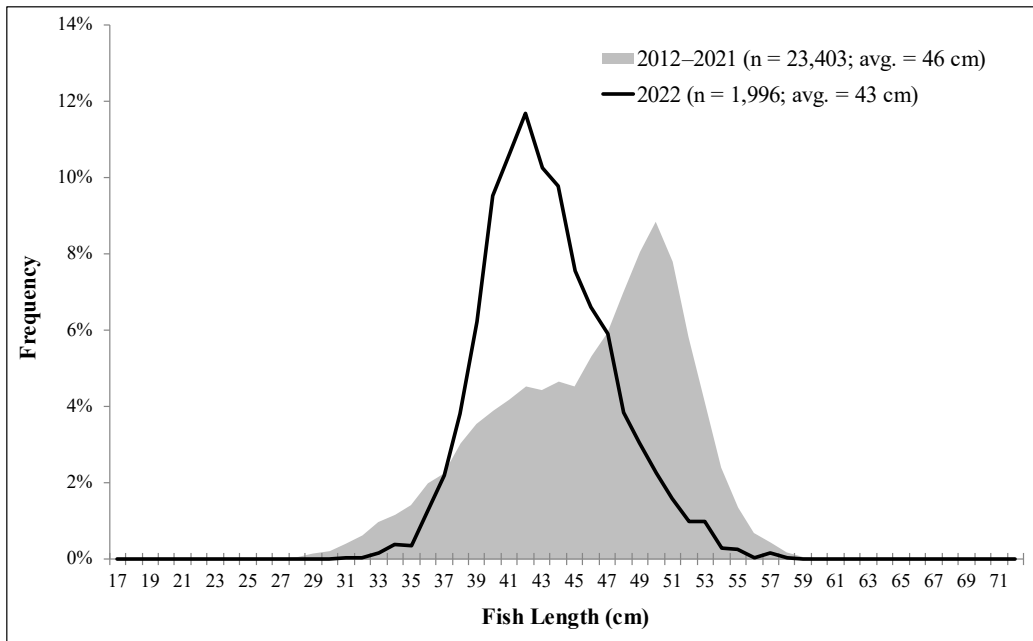


Figure 12.—Kodiak Area black rockfish length frequency from directed fisheries, 2012–2022.

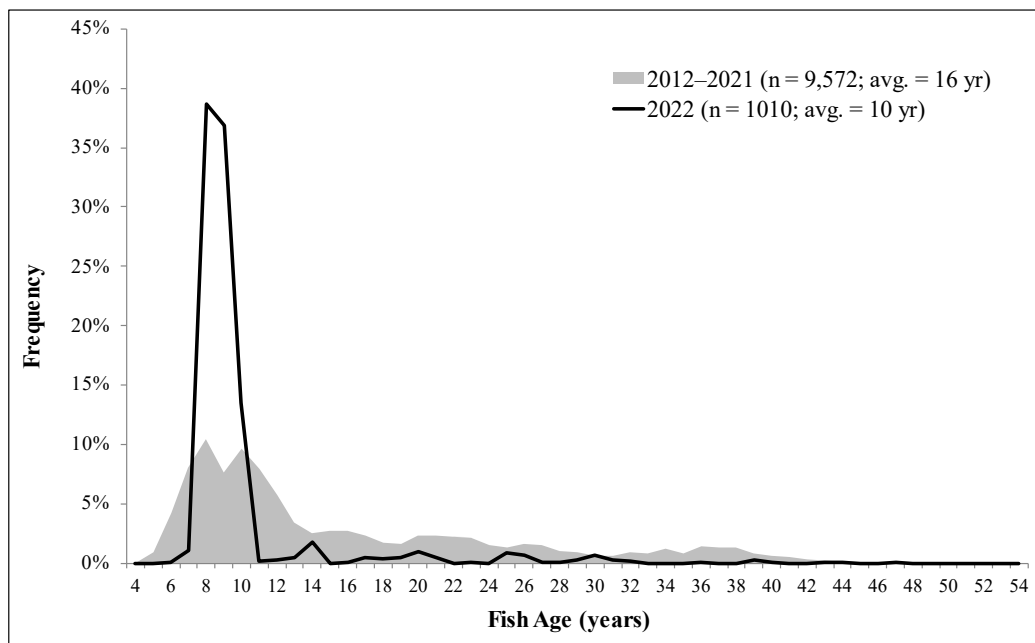


Figure 13.—Kodiak Area black rockfish age composition from directed fisheries, 2012–2022.

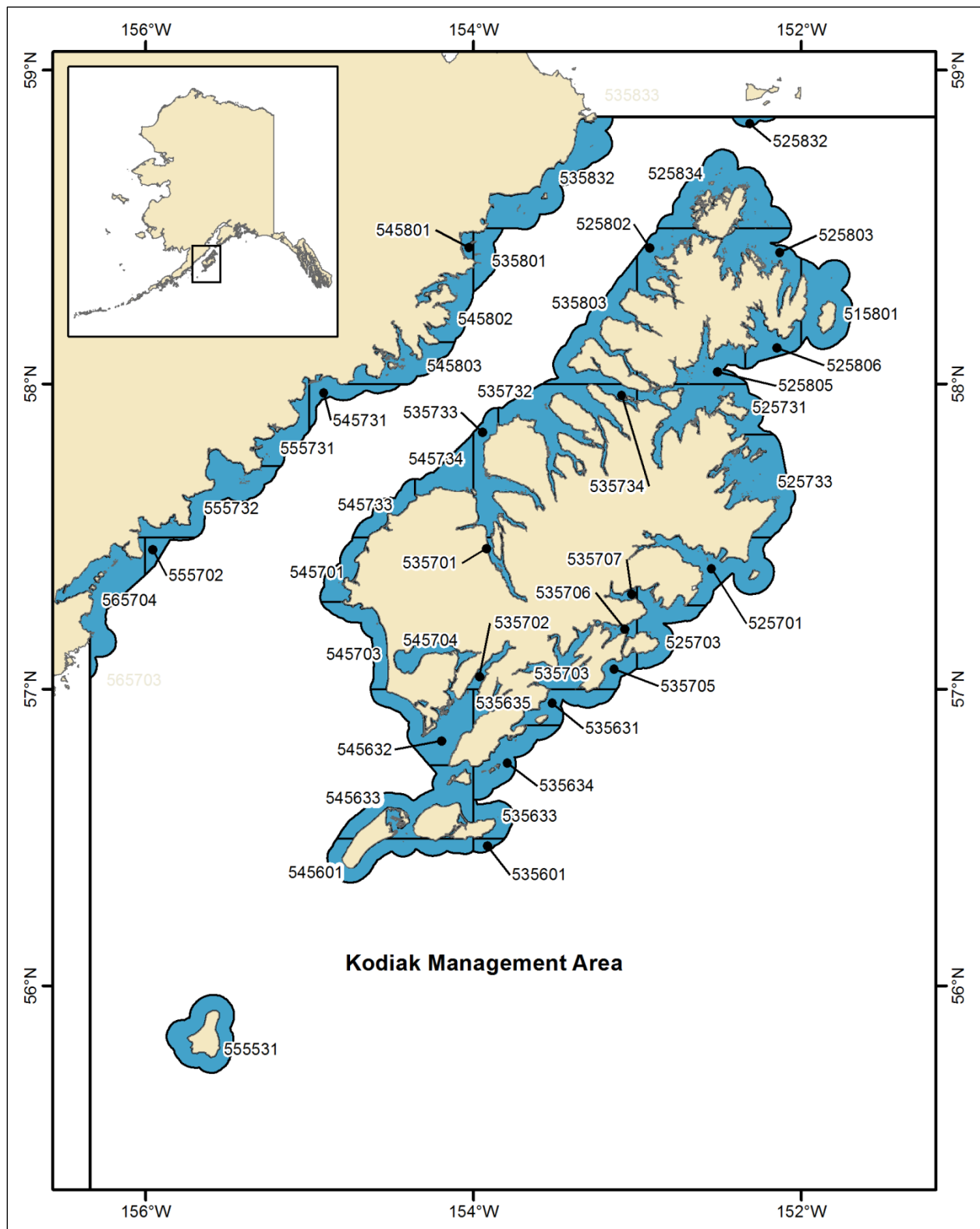
APPENDIX A. FREQUENTLY USED ACRONYMS AND KEYWORDS

Appendix A1.—Frequently used acronyms and keywords.

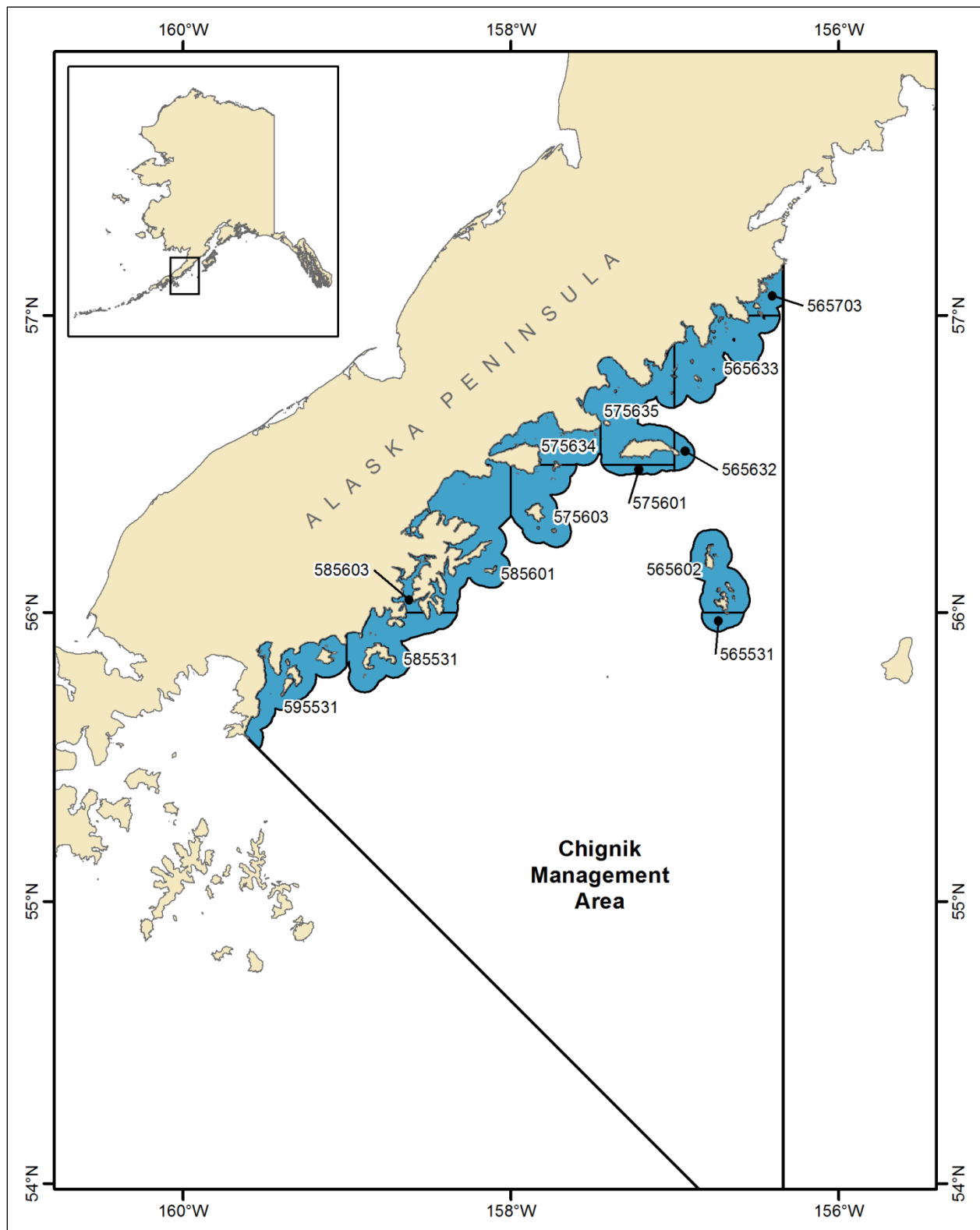
Acronym	Definition
ABC	Acceptable Biological Catch, stock specification as set by NPFMC on an annual basis
ADF&G	Alaska Department of Fish and Game
BOF	Alaska Board of Fisheries
BSAI	Bering Sea-Aleutian Islands Area, state management area or federal management area
CGOA	Central Gulf of Alaska, federal management areas 620 and 630
EEZ	Exclusive Economic Zone, federal waters from 3 to 200 nautical miles offshore
EGOA	Eastern Gulf of Alaska, federal management areas 640 and 650
EO	Emergency order, management action taken by ADF&G to affect regulatory change
FFP	Federal Fisheries Permit
GHL	Guideline Harvest Level
GOA	Gulf of Alaska
LLP	Federal License Limitation Program
mt	Metric ton (1 mt = 2,204.6 lb)
NMFS	National Marine Fisheries Service
NPFMC	North Pacific Fishery Management Council
OAL	Overall length
Parallel fishery	Fishery occurring from 0 to 3 nautical miles opened by the state under federal rules while a federal fishery is ongoing from 3 to 200 nautical miles
SAP	South Alaska Peninsula
SSL	Steller sea lion
State waters	Territorial sea from 0 to 3 nautical miles offshore
State-waters fishery	Fishery occurring from 0 to 3 nautical miles open under Alaska Board of Fisheries regulations and managed exclusively by Alaska Department of Fish and Game
TAC	Total Allowable Catch, final federal harvest specification for directed fishing as recommended by NPFMC and set by NMFS
WGOA	Western Gulf of Alaska, federal management area 610

**APPENDIX B. KODIAK, CHIGNIK, AND SOUTH ALASKA
PENINSULA MANAGEMENT AREAS STATE-WATERS
STATISTICAL AREAS FOR GROUND FISH**

Appendix B1.—Kodiak Management Area state-waters statistical areas for groundfish.



Appendix B2.—Chignik Management Area state-waters statistical areas for groundfish.



Appendix B3.—South Alaska Peninsula Management Area state-waters statistical areas for groundfish.

