

# **Overview of the 2019 Southeast Alaska and Yakutat Commercial, Personal Use, and Subsistence Salmon Fisheries**

by

**Sara Conrad**

and

**Troy Thynes**

---

July 2020

---

Alaska Department of Fish and Game

Divisions of Sport Fish and Commercial Fisheries



## Symbols and Abbreviations

The following symbols and abbreviations, and others approved for the Système International d'Unités (SI), are used without definition in the following reports by the Divisions of Sport Fish and of Commercial Fisheries: Fishery Manuscripts, Fishery Data Series Reports, Fishery Management Reports, and Special Publications. All others, including deviations from definitions listed below, are noted in the text at first mention, as well as in the titles or footnotes of tables, and in figure or figure captions.

| Weights and measures (metric)           |                    | General                                          |                                             | Mathematics, statistics                                                       |                         |   |
|-----------------------------------------|--------------------|--------------------------------------------------|---------------------------------------------|-------------------------------------------------------------------------------|-------------------------|---|
| centimeter                              | cm                 | Alaska Administrative Code                       | AAC                                         | all standard mathematical signs, symbols and abbreviations                    |                         |   |
| deciliter                               | dL                 | all commonly accepted abbreviations              | e.g., Mr., Mrs., AM, PM, etc.               | alternate hypothesis                                                          | H <sub>A</sub>          |   |
| gram                                    | g                  | all commonly accepted professional titles        | e.g., Dr., Ph.D., R.N., etc.                | base of natural logarithm                                                     | <i>e</i>                |   |
| hectare                                 | ha                 |                                                  |                                             | catch per unit effort                                                         | CPUE                    |   |
| kilogram                                | kg                 |                                                  |                                             | coefficient of variation                                                      | CV                      |   |
| kilometer                               | km                 | at                                               | @                                           | common test statistics                                                        | (F, t, $\chi^2$ , etc.) |   |
| liter                                   | L                  |                                                  |                                             | confidence interval                                                           | CI                      |   |
| meter                                   | m                  |                                                  |                                             | correlation coefficient                                                       | (multiple)              | R |
| milliliter                              | mL                 | compass directions:                              |                                             | correlation coefficient                                                       | (simple)                | r |
| millimeter                              | mm                 | east                                             | E                                           |                                                                               |                         |   |
| Weights and measures (English)          |                    | north                                            | N                                           |                                                                               |                         |   |
|                                         |                    | south                                            | S                                           |                                                                               |                         |   |
|                                         |                    | west                                             | W                                           |                                                                               |                         |   |
|                                         |                    | copyright                                        | ©                                           |                                                                               |                         |   |
| cubic feet per second                   | ft <sup>3</sup> /s | corporate suffixes:                              |                                             | degrees of freedom                                                            | df                      |   |
| foot                                    | ft                 | Company                                          | Co.                                         | expected value                                                                | <i>E</i>                |   |
| gallon                                  | gal                | Corporation                                      | Corp.                                       | greater than                                                                  | >                       |   |
| inch                                    | in                 | Incorporated                                     | Inc.                                        | greater than or equal to                                                      | ≥                       |   |
| mile                                    | mi                 | Limited                                          | Ltd.                                        | harvest per unit effort                                                       | HPUE                    |   |
| nautical mile                           | nmi                | District of Columbia                             | D.C.                                        | less than                                                                     | <                       |   |
| ounce                                   | oz                 | et alii (and others)                             | et al.                                      | less than or equal to                                                         | ≤                       |   |
| pound                                   | lb                 | et cetera (and so forth)                         | etc.                                        | logarithm (natural)                                                           | ln                      |   |
| quart                                   | qt                 | exempli gratia                                   |                                             | logarithm (base 10)                                                           | log                     |   |
| yard                                    | yd                 | (for example)                                    | e.g.                                        | logarithm (specify base)                                                      | log <sub>2</sub> , etc. |   |
| Time and temperature                    |                    | Federal Information Code                         | FIC                                         | minute (angular)                                                              | '                       |   |
|                                         |                    | id est (that is)                                 | i.e.                                        | not significant                                                               | NS                      |   |
|                                         |                    | latitude or longitude                            | lat or long                                 | null hypothesis                                                               | H <sub>0</sub>          |   |
|                                         |                    | monetary symbols                                 |                                             | percent                                                                       | %                       |   |
| day                                     | d                  | (U.S.)                                           | \$, ¢                                       | probability                                                                   | P                       |   |
| degrees Celsius                         | °C                 | months (tables and figures): first three letters | Jan.,...,Dec                                | probability of a type I error (rejection of the null hypothesis when true)    | $\alpha$                |   |
| degrees Fahrenheit                      | °F                 | registered trademark                             | ®                                           | probability of a type II error (acceptance of the null hypothesis when false) | $\beta$                 |   |
| degrees kelvin                          | K                  | trademark                                        | ™                                           |                                                                               |                         |   |
| hour                                    | h                  | United States                                    |                                             | second (angular)                                                              | "                       |   |
| minute                                  | min                | (adjective)                                      | U.S.                                        | standard deviation                                                            | SD                      |   |
| second                                  | s                  | United States of America (noun)                  | USA                                         | standard error                                                                | SE                      |   |
| Physics and chemistry                   |                    | U.S.C.                                           | United States Code                          | variance                                                                      |                         |   |
|                                         |                    | U.S. state                                       | use two-letter abbreviations (e.g., AK, WA) | population                                                                    | Var                     |   |
|                                         |                    |                                                  |                                             | sample                                                                        | var                     |   |
|                                         |                    |                                                  |                                             |                                                                               |                         |   |
| all atomic symbols                      |                    |                                                  |                                             |                                                                               |                         |   |
| alternating current                     | AC                 |                                                  |                                             |                                                                               |                         |   |
| ampere                                  | A                  |                                                  |                                             |                                                                               |                         |   |
| calorie                                 | cal                |                                                  |                                             |                                                                               |                         |   |
| direct current                          | DC                 |                                                  |                                             |                                                                               |                         |   |
| hertz                                   | Hz                 |                                                  |                                             |                                                                               |                         |   |
| horsepower                              | hp                 |                                                  |                                             |                                                                               |                         |   |
| hydrogen ion activity (negative log of) | pH                 |                                                  |                                             |                                                                               |                         |   |
| parts per million                       | ppm                |                                                  |                                             |                                                                               |                         |   |
| parts per thousand                      | ppt, ‰             |                                                  |                                             |                                                                               |                         |   |
| volts                                   | V                  |                                                  |                                             |                                                                               |                         |   |
| watts                                   | W                  |                                                  |                                             |                                                                               |                         |   |

***FISHERY MANAGEMENT REPORT NO. 20-18***

**OVERVIEW OF THE 2019 SOUTHEAST ALASKA AND YAKUTAT  
COMMERCIAL, PERSONAL USE, AND SUBSISTENCE SALMON  
FISHERIES**

by

Sara Conrad

Alaska Department of Fish and Game, Division of Commercial Fisheries, Douglas

and

Troy Thynes

Alaska Department of Fish and Game, Division of Commercial Fisheries, Petersburg

Alaska Department of Fish and Game  
Division of Sport Fish, Research and Technical Services  
333 Raspberry Road, Anchorage, Alaska, 99518-1565

July 2020

The Fishery Management Reports series was established in 1989 by the Division of Sport Fish for the publication of an overview of management activities and goals in a specific geographic area, and became a joint divisional series in 2004 with the Division of Commercial Fisheries. Fishery Management Reports are intended for fishery and other technical professionals, as well as lay persons. Fishery Management Reports are available through the Alaska State Library and on the Internet: <http://www.adfg.alaska.gov/sf/publications/>. This publication has undergone regional peer review.

*Sara Conrad,  
Alaska Department of Fish and Game, Division of Commercial Fisheries,  
802 3<sup>rd</sup> Street,  
Douglas, AK 99811-0024 USA*

*and*

*Troy Thynes  
Alaska Department of Fish and Game, Division of Commercial Fisheries  
16 Sing Lee Alley  
Petersburg, AK 99835-0667 USA*

*This document should be cited as follows:*

*Conrad, S., and T. Thynes. 2020. Overview of the 2019 Southeast Alaska and Yakutat commercial, personal use, and subsistence salmon fisheries. Alaska Department of Fish and Game, Fishery Management Report No. 20-18, Anchorage.*

The Alaska Department of Fish and Game (ADF&G) administers all programs and activities free from discrimination based on race, color, national origin, age, sex, religion, marital status, pregnancy, parenthood, or disability. The department administers all programs and activities in compliance with Title VI of the Civil Rights Act of 1964, Section 504 of the Rehabilitation Act of 1973, Title II of the Americans with Disabilities Act (ADA) of 1990, the Age Discrimination Act of 1975, and Title IX of the Education Amendments of 1972.

**If you believe you have been discriminated against in any program, activity, or facility please write:**

ADF&G ADA Coordinator, P.O. Box 115526, Juneau, AK 99811-5526  
U.S. Fish and Wildlife Service, 4401 N. Fairfax Drive, MS 2042, Arlington, VA 22203  
Office of Equal Opportunity, U.S. Department of the Interior, 1849 C Street NW MS 5230, Washington DC 20240

**The department's ADA Coordinator can be reached via phone at the following numbers:**

(VOICE) 907-465-6077, (Statewide Telecommunication Device for the Deaf) 1-800-478-3648,  
(Juneau TDD) 907-465-3646, or (FAX) 907-465-6078

**For information on alternative formats and questions on this publication, please contact:**

ADF&G Division of Sport Fish, Research and Technical Services, 333 Raspberry Road, Anchorage AK 99518 (907) 267-2375.

# TABLE OF CONTENTS

|                                                    | Page |
|----------------------------------------------------|------|
| LIST OF TABLES.....                                | i    |
| LIST OF FIGURES.....                               | ii   |
| ABSTRACT .....                                     | 1    |
| INTRODUCTION .....                                 | 1    |
| SOUTHEAST ALASKA/YAKUTAT REGION .....              | 1    |
| FISHERIES MANAGEMENT ORGANIZATION .....            | 2    |
| FISHERY CHARACTERISTICS .....                      | 2    |
| 2019 HISTORICAL COMPARISON .....                   | 3    |
| FISHERY PARTICIPATION .....                        | 4    |
| 2019 SALMON HARVEST .....                          | 5    |
| HARVEST BY GEAR TYPE .....                         | 5    |
| EXVESSEL VALUE.....                                | 6    |
| SUBSISTENCE AND PERSONAL USE SALMON FISHERIES..... | 6    |
| REFERENCES CITED .....                             | 7    |
| TABLES AND FIGURES.....                            | 9    |

## LIST OF TABLES

| Table                                                                                                                                       | Page |
|---------------------------------------------------------------------------------------------------------------------------------------------|------|
| 1. Region I annual total commercial salmon harvest in numbers and percentages of the total by species, 1989 to 2019.....                    | 10   |
| 2. Number of active limited entry and interim use permits issued and fished in Southeast Alaska fisheries, 1975 to 2019.....                | 11   |
| 3. Southeast Alaska commercial salmon harvest, in numbers, by harvest type and fishery, 2019.....                                           | 12   |
| 4. Southeast Alaska annual commercial total salmon harvest by harvest type, in numbers and percent, 1989 to 2019.....                       | 13   |
| 5. Southeast Alaska annual commercial Chinook salmon harvest by harvest type, in numbers and percent, 1989 to 2019.....                     | 14   |
| 6. Southeast Alaska annual commercial total sockeye salmon harvest by harvest type, in numbers and percent, 1989 to 2019.....               | 15   |
| 7. Southeast Alaska annual commercial total coho salmon harvest by harvest type, in numbers and percent, 1989 to 2019.....                  | 16   |
| 8. Southeast Alaska annual commercial total pink salmon harvest by harvest type, in numbers and percent, 1989 to 2019.....                  | 17   |
| 9. Southeast Alaska annual commercial total chum salmon harvest by harvest type, in numbers and percent, 1989 to 2019.....                  | 18   |
| 10. Southeast Alaska estimated exvessel value, harvest, average weight, and price paid per pound by gear and species, 2019.....             | 19   |
| 11. Southeast Alaska salmon exvessel value estimates from CFEC and fish ticket data, by gear group, 1976–2019.....                          | 20   |
| 12. Southeast Alaska reported subsistence and personal use salmon harvest, by species, and number of permits issued, from 1985 to 2019..... | 21   |

# LIST OF FIGURES

| Figure                                                                                                                                                                  | Page |
|-------------------------------------------------------------------------------------------------------------------------------------------------------------------------|------|
| 1. Southeast Alaska consists of Alaska waters between Cape Suckling on the north and Dixon Entrance on the south .....                                                  | 22   |
| 2. Boundaries for regulatory Districts 1 to 16, as well as Dixon Entrance District, within Southeast Alaska.....                                                        | 23   |
| 3. Boundaries for Yakutat and Yakataga regulatory Districts within the Yakutat management area.....                                                                     | 24   |
| 4. Southeast Alaska historical salmon harvest and recent 10-year average harvest, from 1878 to 2019.....                                                                | 25   |
| 5. Southeast Alaska historical salmon harvest by species and season, 1878 to 2019.....                                                                                  | 26   |
| 6. Southeast Alaska total commercial exvessel value by gear type and season from CFEC and fish ticket data, and number of salmon harvested by season, 1975 to 2019..... | 27   |
| 7. Number of fish harvested in the subsistence/personal use fishery, by species for Southeast Alaska, 1985 to 2019.....                                                 | 28   |

## ABSTRACT

Southeast Alaska and Yakutat commercial, personal use, and subsistence salmon fisheries are summarized for the 2019 season. Historical harvests are provided for comparison. Total commercial harvest in 2019 was 33.5 million salmon with an initial estimated exvessel value of \$105.8 million. Harvest by species in 2019 included 185,000 Chinook (*Oncorhynchus tshawytscha*), 1.0 million sockeye (*O. nerka*), 1.7 million coho (*O. kisutch*), 21.2 million pink (*O. gorbuscha*), and 9.4 million chum salmon (*O. keta*). In the purse seine fishery, 240 permit holders harvested 23.7 million salmon, including 18.6 million pink and 4.4 million chum salmon. In the drift gillnet fishery, 419 permit holders harvested 3.8 million salmon, including 2.3 million chum, 872,000 pink, 196,000 coho, 395,000 sockeye, and 21,000 Chinook salmon. In the troll fishery, 661 power troll and 227 hand troll permit holders (888 total permits) harvested 109,000 Chinook, 973,000 coho, and 270,000 chum salmon. In the set gillnet fishery, 94 permit holders harvested 55,000 sockeye and 100,000 coho salmon. Hatchery organizations harvested a total of 2.9 million salmon for cost recovery including 2.3 million chum salmon. In the 2019 personal use and subsistence fisheries, 2,858 household permits were issued in Southeast Alaska and Yakutat combined. Reported harvest for 2019 is 40,000 salmon.

**Key words:** Southeast Alaska, Yakutat, 2019 season, commercial fisheries, personal use fisheries, subsistence fisheries, Chinook (*Oncorhynchus tshawytscha*), sockeye (*Oncorhynchus nerka*), coho (*Oncorhynchus kisutch*), pink (*Oncorhynchus gorbuscha*), chum (*Oncorhynchus keta*), salmon, exvessel value, permit holders, hatchery, purse seine, drift gillnet, power troll, hand troll, set gillnet

## INTRODUCTION

This report is an overview of the commercial and subsistence/personal use salmon fisheries in the Southeast Alaska/Yakutat Region (Region I) for the 2019 season. Separate annual management reports will be issued which will provide more detailed summaries of the 2019 Region I salmon troll fishery, set gillnet fishery, and Southeast Alaska purse seine and drift gillnet fisheries.

In Region I, 33.5 million salmon were commercially harvested in 2019 (Table 1). A total of 1,604 permit holders participated in the 2019 common property commercial salmon season, 4% less than in 2018 (Table 2). Salmon harvests by gear type for 2019 included 23.7 million by purse seine, 3.8 million by drift gillnet, 0.2 million by set gillnet, and 1.4 million by hand and power troll (Table 3). Additional commercial harvests included 2.9 million salmon for private nonprofit hatchery cost recovery and 1.4 million salmon within the Annette Island Reservation. The 2019 preliminary total exvessel value of the commercial common property salmon harvest is \$91 million.

For the 2019 subsistence and personal use fisheries, 52% of the 2,858 Region I subsistence/personal use household permits have reported harvesting 40,400 salmon of which 87% were sockeye salmon.

## SOUTHEAST ALASKA/YAKUTAT REGION

Fisheries management in the State of Alaska is divided between four large geographical regions: Southeast/Yakutat (Region I), Central, Westward, and Arctic–Yukon–Kuskokwim. Region I consists of Alaska waters between Cape Suckling on the north and Dixon Entrance on the south (Figure 1). Region I is divided into two salmon net registration areas. Registration Area A, the Southeast Alaska area, extends from Dixon Entrance to Cape Fairweather. The Southeast Alaska area is divided into 17 regulatory districts, Districts 1 through 16 and the Dixon Entrance District (Figure 2). Some Registration Area A districts are further divided into sections by regulation. Registration Area D, the Yakutat area, extends from Cape Fairweather to Cape Suckling. The Yakutat area is further divided into the Yakutat District, extending from Cape Fairweather to Icy Cape, and the Yakataga District, extending westward from Icy Cape to Cape Suckling (Figure 3).

For management and administrative purposes, Region I is divided into six management areas with offices located in Juneau, Ketchikan/Craig, Petersburg/Wrangell, Sitka, Haines, and Yakutat. Offices in Craig and Yakutat are seasonally staffed and other offices are open all year.

## **FISHERIES MANAGEMENT ORGANIZATION**

Management of Region I salmon fisheries is provided by area management biologists, regional management biologists, and their staff. There are six area management biologists, corresponding with each area office. Management biologists with area responsibilities oversee the commercial salmon net (purse seine, drift gillnet, and set gillnet), herring, shrimp (pot gear), and the subsistence/personal use fisheries in their respective areas, as well as miscellaneous shellfish dive fisheries. Management biologists with regional responsibilities oversee the salmon troll, groundfish, crab, and shrimp beam trawl fisheries. There is a closely coordinated regional management approach for every fishery because of the size of the region and the spatial and temporal movement of fish and fishermen between the various management areas. Prior to each salmon season, the Alaska Department of Fish and Game (ADF&G) publishes detailed management plans that specify how that season's fishery will be managed and contain information about expected returns. Specific management actions are taken inseason which specify times and areas of fishery openings or additional measures. These actions are implemented through emergency orders under authority delegated by the department commissioner to regional and area management biologists. Details of openings are announced in widely distributed department-issued announcements. All landings of commercially harvested salmon are reported to the department on fish tickets by the initial buyers. Subsistence and personal use fisheries are managed under permit authority. Permits are issued separately for each management area and harvests are reported when permits are returned at the end of the season.

## **FISHERY CHARACTERISTICS**

Salmon are commercially harvested in Southeast Alaska (Registration Area A) with purse seines and drift gillnets, in Yakutat (Registration Area D) with set gillnets, and in both areas with hand troll and power troll gear. The salmon net fisheries are confined to state waters. The troll fishery operates in both state waters and in the federal waters of the Exclusive Economic Zone. The use of floating fish traps is only allowed within the Annette Island Fishery Reserve, established by Presidential Proclamation in 1916; however, there have been no reported fish trap harvests since 1993.

Region I salmon fisheries are complex due to the mixed stock and mixed species nature of the returns and to the utilization of returns by several different gear groups that often harvest the same stocks of fish. Because the region contains approximately 5,500 salmon-producing streams and tributaries of various productivity levels, it is impractical to apply stock-specific fisheries management for most stocks. Additionally, some salmon harvested in the region originate from other states (primarily Washington and Oregon) and Canada. Salmon fisheries are managed for sustained yield and allocated among users according to Alaska Board of Fisheries regulations and harvest-sharing provisions of the Pacific Salmon Treaty (PST) between the United States and Canada.



## 2019 HISTORICAL COMPARISON

Commercial utilization of Region I salmon resources began in the late 1870s (Figure 4). Until the early 1900s, sockeye salmon (*Oncorhynchus nerka*) was the primary species harvested (Figure 5). Pink salmon (*O. gorbuscha*) began to dominate the harvest in the early 1900s. During the past 10 years, pink salmon has made up 67% of the region's total salmon harvest (Table 1). The relative order of harvest (in numbers of fish) from highest to lowest is generally pink, chum (*O. keta*), coho (*O. kisutch*), sockeye, and Chinook (*O. tshawytscha*) salmon.

Region I salmon harvest peaked at over 60 million in the late 1930s and early 1940s and declined to historical low levels in the 1950s and early 1960s (Figure 4). During the middle to late 1960s harvests increased, but in the early 1970s another decline in production occurred. From the early 1980s through the mid-2000s salmon harvests increased substantially. Record harvests since statehood occurred during the 12-year period from 1993 through 2004 for Chinook (2004), sockeye (1993), coho (1994), and chum salmon (1996; Table 1). All-time record harvests going back to 1878 were set for sockeye and Chinook salmon prior to statehood, with 3.5 million sockeye salmon harvested in 1914 and 878,000 Chinook salmon harvested in 1937 (Byerly et al. 1999). The record harvest for coho salmon was 5.7 million in 1994; the record for chum salmon was 16.0 million in 1996; and the record pink salmon harvest was 94.8 million in 2013. The record regional total commercial harvest was set in 2013 at 112.5 million salmon. Within the most recent decade, harvests have fluctuated greatly. Because pink salmon are the most abundant species, downward harvest trends are in large part due to low even-year pink salmon returns that began in 2006. With the exception of 2019, odd-year harvests over the same period have been above the long-term average.

Salmon harvests since 1987, and average harvests by gear and harvest type, are presented in Table 4. The various salmon fisheries in the region are well established, and the distribution of harvests between fisheries has changed little when comparing the recent 10-year average (2009–2018) or the long-term average since 1962. The exception is that private hatchery cost-recovery harvests, which began around 1980, now account for a substantial proportion of overall harvests. Recent 10-year average harvests in percentages by gear type are as follows: 71% by purse seine, 11% by drift gillnet, 9% by hatchery organizations, 5% by troll, 4% by Annette Island, and 1% by set gillnet. In 2019, the total harvest of 33.5 million salmon ranked 30th of the past 58 years (since 1962).

Chinook salmon harvest of 186,000 fish in 2019 was below both the recent and long-term averages (Table 5, Figure 5). The 2019 Chinook salmon harvest ranks third lowest over the previous 58 years. Targeted Chinook salmon fisheries are composed of three elements: (1) coastwide mixed stocks harvested within limits of the all-gear PST harvest ceiling, (2) production from Alaska Chinook salmon enhancement programs, and (3) directed fisheries on surplus returns to the Stikine and/or Taku Rivers. The average total Chinook salmon harvest since 1962 is approximately 298,000 fish. Chinook salmon less than 28 inches may be retained but not sold in the purse seine fishery, and Chinook salmon of all sizes may be sold in the drift gillnet fishery. The PST accounts for large Chinook salmon, greater than or equal to 28 inches overall length as Treaty Chinook salmon. Preliminary harvests of coastwide Chinook salmon accountable under the PST included 103,000 by troll gear, 9,400 by purse seine gear, 3,000 by gillnet gear, and 24,600 for sport fisheries. Total commercial harvests of Alaska hatchery origin Chinook salmon were 40,700, 23% of total Chinook salmon harvests, and 31,000 were harvested in private hatchery cost-recovery

fisheries. For transboundary river stocks regulated under the PST, the preseason forecasts for the Stikine and Taku Rivers in 2019 provided no allowable catch (AC) for directed fisheries on returns of large Chinook (28 inches in length or greater).

Sockeye salmon harvest was 1.0 million fish in 2019 (Table 6, Figure 5). This harvest was below both the recent 10-year average of 1.1 million and the long-term average of 1.3 million fish. The 2019 sockeye salmon harvest ranks 36th over the previous 57 years. Sockeye salmon harvests in the northern boundary area and transboundary river fisheries are regulated under the PST to provide for conservation and harvest sharing with Canada. The Southeast Alaska purse seine fishery harvest of 445,000 fish was above the recent 10-year average, below the long-term average, and accounted for 44% of the region's total harvest. The drift gillnet fishery harvest of 395,000 fish was below the recent and long-term averages and accounted for 39% of the region's total harvest. The set gillnet fishery harvest of 55,000 fish was below the recent and long-term averages and accounted for 5% of the regional total harvest.

Coho salmon harvest was 1.7 million fish in 2019 (Table 7, Figure 5). This harvest was less than the long-term and recent averages, and ranks 35th of the 57 years since 1962. The coho salmon harvest in the troll fishery was 973,000 fish, less than the long-term and recent averages, and accounted for 57% of the harvest. Purse seine, drift gillnet, and set gillnet harvests of coho salmon were all below long-term and recent averages.

Pink salmon harvest was 21.2 million fish in 2019, 63% of the region's total salmon harvest (Table 8, Figure 5). Purse seine pink salmon harvest was 18.6 million fish, 88% of the total pink salmon harvest. Pink salmon harvest was below the recent and long-term averages, ranking as the 33rd largest harvest since 1962, and the lowest odd-year harvest since 1987. Following a sharp decline in harvest in the 2006 season, a stronger odd-year return pattern was established and continued in 2019 for southern southeast but the northern southeast experienced a sharp decline in harvest.

Chum salmon harvest of 9.4 million fish in 2019 ranks 20th since 1962 and was below the recent average of 10.5 million fish (Table 9, Figure 5). The purse seine chum salmon harvest was 4.4 million fish, 47% of the total chum salmon harvest. Most chum salmon production in the region is attributable to hatchery production. Before hatchery chum salmon production became significant in 1984, the 1962–1983 regional average chum salmon harvest was 1.6 million.

## **FISHERY PARTICIPATION**

According to information from the Commercial Fisheries Entry Commission (CFEC 2020), 2,783 total limited entry permits were active (issued or eligible to be renewed) in 2019. Active permits included 279 purse seine, 461 drift gillnet, 166 set gillnet, 918 hand troll, and 959 power troll permits (Table 2). A total of 1,604 permit holders reported salmon landings in calendar year 2019, including 236 purse seine, 397 drift gillnet, 95 set gillnet, 215 hand troll, and 661 power troll permit holders.

Purse seine participation by 240 permit holders in 2019 was a decrease of 2 permits from 2018 and a decrease from the recent 10-year average participation of 257 permits. The number of purse seine permits issued was reduced in 2008 by 35 permits through a permit buyback fleet-reduction program. In 2012, an additional buyback program administered by the CFEC and the National Marine Fisheries Service further reduced the number of permits issued by 64 permits (Table 2). Participation in the purse seine fishery in 2019 was eighth highest during the most recent 10-year

period. Drift gillnet participation by 419 permit holders was a decrease from the 2018 level and was below the recent 10-year average of 428 permits. Set gillnet effort in 2019 by 94 permit holders was below the recent 10-year average and the lowest during that period. Power troll participation by 661 permit holders was below the recent 10-year average of 763 permits, and hand troll effort by 227 permit holders was below the recent 10-year average of 321 permits. Overall participation level in 2019 was 12% below the recent 10-year average.

## **2019 SALMON HARVEST**

Region I cumulative commercial salmon harvest by all harvest categories, including hatchery cost recovery, was 33.5 million fish in 2019 (Table 3). Total common property commercial harvest was 17.6 million fish, 87% of total harvest. Overall harvest in numbers of salmon in 2019 were 152% of the 2018 harvest. The 2019 harvests by species compared with 2018 were as follows: Chinook 115%, sockeye 159%, coho 107%, pink 261%, and chum salmon 82% (Table 1). Total commercial salmon harvest proportions by species were: Chinook 1%, sockeye 3%, coho 5%, pink 63%, and chum salmon 28%. The 2019 combined-gear, large Chinook salmon harvest of 184,000 fish was 65% of the most recent average and 62% of the long-term average. Sockeye salmon harvest of 637,000 fish was 92% of the recent average and 76% of the long-term average. Coho salmon harvest of 1.7 million fish was 65% of the recent and 62% of the long-term averages. Pink salmon harvest of 21.2 million fish was 57% of the recent and 69% of the long-term averages. Chum salmon harvest of 9.4 million fish was 89% of the recent and 152% of the long-term averages. The all species total harvest was 65% of the recent average and 82% of the long-term average harvest (Table 1).

## **HARVEST BY GEAR TYPE**

Region I 2019 salmon harvest by gear type or harvest category and species are summarized in Table 3. Historical harvests showing percentages of harvest by gear are summarized in Table 4. Salmon landed by purse seine gear accounted for 71% of the total salmon harvest, followed by drift gillnet (11%), hatchery cost recovery (9%), troll (4%), and Annette Island (4%) fisheries. Combined hand and power troll harvests accounted for 58% of regional Chinook salmon harvest and 57% of coho salmon harvest (Tables 5 and 7). Of the total harvest, purse seine accounted for 44% of sockeye, 88% of pink, and 47% of chum salmon in the region (Tables 6, 8, and 9). Drift gillnet accounted for 11% of Chinook, 39% of sockeye, 11% of coho, and 25% of chum salmon harvest. Set gillnet harvested 1% of sockeye and 6% of coho salmon. Approximately 13% of Chinook, 25% of sockeye, 9% of coho, and 28% of chum salmon harvest was taken in hatchery cost-recovery fisheries.

Total Chinook salmon harvests of 184,000 fish included 109,000 by troll, 21,000 by purse seine, 21,000 by drift gillnet, 31,000 in hatchery cost recovery, 1,400 by Annette Island Reservation, and 300 by Yakutat set gillnet fisheries. Sockeye salmon harvests of 1.0 million fish included 445,000 by purse seine, 395,000 by drift gillnet, 97,000 by hatchery cost recovery, and 55,000 by set gillnet fisheries. Coho salmon harvests of 1.7 million fish included 973,00 by troll, 196,000 by drift gillnet, 246,000 by purse seine, 177,000 in hatchery cost recovery, and 101,000 by set gillnet fisheries. Pink salmon harvests of 21.2 million fish included 18.6 million by purse seine, 872,000 by drift gillnet, and 1.2 million by Annette Island Reservation fisheries. Chum salmon harvests of 9.4 million fish included 4.3 million by purse seine, 2.3 million by drift gillnet, 2.3 million in cost recovery, 270,000 by troll, and 98,000 fish by Annette Island Reservation fisheries.

## EXVESSEL VALUE

The initial reported value of the 2019 Region I commercial salmon harvest based on fish ticket data for all fisheries is \$106 million (Table 10). The total 2019 salmon harvest in numbers of fish was 44% of the 2018 harvest. The 2019 commercial harvest of 172 million pounds was 119% of the 2018 commercial harvest of 145 million pounds. In 2019, pink salmon accounted for 45% of the total weight of salmon harvested, compared with 22% in 2018. In 2019, chum salmon accounted for 43% of the total weight of salmon harvested, compared with 66% in 2018. Average weights by species were similar (within 5%) in 2019 compared with 2018 for Chinook, sockeye, and pink, and decreased for coho (8%) and chum (6%) salmon. Prices in 2019 compared to 2018 prices from CFEC data decreased for Chinook salmon from \$7.69/lb to \$5.66/lb, for coho salmon from \$1.71/lb to \$1.69/lb, for pink salmon from \$0.38/lb to \$0.30/lb, and for chum salmon from \$0.91/lb to \$0.56/lb, and maintained for sockeye salmon at \$1.94/lb.

The preliminary reported exvessel value of the 2019 Region I commercial salmon harvest for purse seine, gillnet, and troll fisheries combined based on fish ticket data is \$88 million. The 2019 season exvessel value for these salmon fisheries is 66% of the recent 10-year average of \$134.2 million and ranks 23rd highest over the 44-year period since 1975. Common property fishery exvessel value estimates for 2019 exclude Annette Island Reservation, hatchery cost recovery, and miscellaneous harvests.

The 2019 exvessel value by gear was highest for the purse seine fishery (\$47.3 million), followed by troll (\$23 million), drift gillnet (\$18.9 million), hatchery cost recovery (\$12 million), Annette Island (\$2.5 million), and set gillnet (\$1.6 million) fisheries. Comparing the conservative, preliminary value for 2019 to reported CFEC fishery values by fishery since 1975, 2019 would rank as the 21st highest value for purse seine, 16th highest for drift gillnet, 29th highest for troll, and 33rd highest for the set gillnet fishery. The regional value breakdown by species included \$11.8 million for Chinook, \$10.8 million for sockeye, \$19.3 million for coho, \$23.2 million for pink, and \$40.8 million for chum salmon.

## SUBSISTENCE AND PERSONAL USE SALMON FISHERIES

In 2018, the Alaska Department of Fish and Game began online permitting for personal use and subsistence fisheries in Southeast Alaska. There is now one permit for all of Southeast Alaska and Yakutat with specific regulations and guidelines for individual management areas provided to the user depending on where they intend to fish. Because unique permits are not required for each management area, there is no area office associated with permit data. As a result, permits and harvest will be analyzed by city of residence instead of management area, as was done in past versions of this report.

Reporting of 2019 harvest information for subsistence and personal use fisheries for Region I remains incomplete. A total of 2,858 subsistence and/or personal use salmon permits were issued in 2019. As of April 2020, 1,480 of the 2,858 permits issued reported harvesting 40,400 salmon of which sockeye salmon accounted for 87% of the reported harvest (Table 12). One permit is issued per household. Combined subsistence/personal use fishery permits issued for residents by management area include 804 in Sitka, 775 in Haines, 655 in Juneau, 269 in Ketchikan, 178 in Petersburg-Wrangell, 101 in Yakutat, and 78 for residents residing in other communities of Alaska. Salmon harvests by community members within each management area include 13,800 fish in Sitka, 7,800 fish in Haines, 9,600 fish in Juneau, 3,500 fish in Ketchikan, 2,200 fish in Petersburg-

Wrangell, 2,400 fish in Yakutat and 1,200 fish by residents residing in other communities in Alaska.

## **REFERENCES CITED**

- Byerly, M., B. Brooks, B. Simonson, H. Savikko, and H. J. Geiger. 1999. Alaska commercial salmon catches, 1878–1997. Alaska Department of Fish and Game, Division of Commercial Fisheries, Regional Information Report No. 5J99-05, Juneau.
- CFEC (Commercial Fisheries Entry Commission). 2020. Fishery Statistics–Permits and Permit Holders–Permit Status–Fishery Statistics–Participation and Earnings–Basic Information Tables–Salmon, S01A, S03A, S04D, S05B, and S15B. [https://www.cfec.state.ak.us/fishery\\_statistics/permits.htm](https://www.cfec.state.ak.us/fishery_statistics/permits.htm) (Accessed April 28, 2020).



## **TABLES AND FIGURES**

Table 1.–Region I annual total commercial salmon harvest in numbers and percentages of the total by species, 1989 to 2019.

| Year            | Chinook <sup>a</sup> | %<br>Chinook | Jacks <sup>b</sup> | %<br>Jacks | Sockeye   | %<br>Sockeye | Coho      | %<br>Coho | Pink       | %<br>Pink | Chum       | %<br>Chum | Total       |
|-----------------|----------------------|--------------|--------------------|------------|-----------|--------------|-----------|-----------|------------|-----------|------------|-----------|-------------|
| 1989            | 280,964              | <1           | 4,092              | <1         | 2,124,840 | 3            | 2,204,044 | 3         | 59,460,203 | 90        | 1,968,894  | 3         | 66,043,037  |
| 1990            | 342,379              | 1            | 3,776              | <1         | 2,155,716 | 5            | 2,868,217 | 7         | 32,342,002 | 81        | 2,217,895  | 6         | 39,929,985  |
| 1991            | 325,602              | <1           | 5,575              | <1         | 2,063,586 | 3            | 3,197,003 | 5         | 61,926,339 | 87        | 3,336,043  | 5         | 70,854,148  |
| 1992            | 233,924              | 1            | 2,363              | <1         | 2,666,422 | 6            | 3,696,209 | 8         | 34,963,298 | 75        | 4,936,515  | 11        | 46,498,731  |
| 1993            | 280,849              | <1           | 3,962              | <1         | 3,190,960 | 4            | 3,665,435 | 5         | 57,299,350 | 79        | 7,879,868  | 11        | 72,320,424  |
| 1994            | 241,100              | <1           | 6,336              | <1         | 2,392,489 | 3            | 5,721,700 | 8         | 57,274,877 | 75        | 10,403,085 | 14        | 76,039,587  |
| 1995            | 218,451              | <1           | 1,978              | <1         | 1,795,331 | 3            | 3,345,678 | 5         | 47,965,506 | 74        | 11,225,693 | 17        | 64,552,637  |
| 1996            | 213,640              | <1           | 947                | <1         | 2,799,848 | 3            | 3,156,951 | 4         | 64,629,714 | 74        | 16,043,397 | 18        | 86,844,497  |
| 1997            | 303,898              | 1            | 558                | <1         | 2,477,394 | 5            | 1,974,427 | 4         | 28,975,224 | 64        | 11,789,139 | 26        | 45,520,640  |
| 1998            | 232,906              | <1           | 1,705              | <1         | 1,375,358 | 2            | 2,989,080 | 5         | 42,535,402 | 68        | 15,695,285 | 25        | 62,829,736  |
| 1999            | 195,048              | <1           | 3,047              | <1         | 1,160,730 | 1            | 3,630,234 | 4         | 77,848,284 | 80        | 14,930,932 | 15        | 97,768,275  |
| 2000            | 232,546              | 1            | 1,349              | <1         | 1,229,390 | 3            | 1,957,028 | 5         | 20,313,426 | 51        | 15,910,909 | 40        | 39,644,648  |
| 2001            | 243,225              | <1           | 2,585              | <1         | 2,035,230 | 3            | 3,300,932 | 4         | 67,055,991 | 82        | 8,754,416  | 11        | 81,392,379  |
| 2002            | 386,384              | 1            | 1,583              | <1         | 806,447   | 1            | 3,242,516 | 6         | 45,331,007 | 79        | 7,455,007  | 13        | 57,222,944  |
| 2003            | 416,684              | 1            | 1,188              | <1         | 1,525,356 | 2            | 2,498,375 | 4         | 52,515,632 | 77        | 11,115,085 | 16        | 68,072,320  |
| 2004            | 483,330              | 1            | 697                | <1         | 2,037,745 | 3            | 3,084,663 | 5         | 45,333,012 | 73        | 11,371,623 | 18        | 62,311,070  |
| 2005            | 447,264              | 1            | 728                | <1         | 1,607,835 | 2            | 3,002,784 | 4         | 59,182,242 | 84        | 6,427,530  | 9         | 70,668,383  |
| 2006            | 370,366              | 1            | 1,275              | <1         | 1,333,496 | 5            | 2,091,875 | 7         | 11,695,411 | 40        | 13,555,280 | 47        | 29,047,703  |
| 2007            | 357,900              | 1            | 1,328              | <1         | 1,904,802 | 3            | 2,062,643 | 4         | 44,884,740 | 77        | 9,417,807  | 16        | 58,629,220  |
| 2008            | 245,738              | 1            | 533                | <1         | 436,302   | 2            | 2,381,473 | 8         | 15,974,351 | 57        | 9,053,088  | 32        | 28,091,485  |
| 2009            | 267,657              | 1            | 976                | <1         | 925,749   | 2            | 2,635,482 | 5         | 38,101,430 | 74        | 9,660,363  | 19        | 51,591,657  |
| 2010            | 260,787              | 1            | 883                | <1         | 720,926   | 2            | 2,587,595 | 7         | 24,303,499 | 65        | 9,475,929  | 25        | 37,349,619  |
| 2011            | 343,928              | <1           | 2,517              | <1         | 1,242,445 | 2            | 2,311,332 | 3         | 59,088,287 | 80        | 10,730,140 | 15        | 73,718,649  |
| 2012            | 279,177              | 1            | 796                | <1         | 947,219   | 3            | 2,086,721 | 6         | 21,304,390 | 58        | 12,374,853 | 33        | 36,993,156  |
| 2013            | 240,308              | <1           | 1,881              | <1         | 974,665   | 1            | 3,877,145 | 3         | 94,786,940 | 84        | 12,573,032 | 11        | 112,453,971 |
| 2014            | 427,270              | 1            | 1,105              | <1         | 1,669,932 | 3            | 3,791,109 | 8         | 37,194,633 | 75        | 6,679,796  | 13        | 49,763,845  |
| 2015            | 350,191              | 1            | 611                | <1         | 1,528,774 | 3            | 2,163,943 | 4         | 35,161,426 | 69        | 11,627,334 | 23        | 50,832,279  |
| 2016            | 336,647              | 1            | 229                | <1         | 1,505,984 | 5            | 2,332,200 | 7         | 18,395,997 | 58        | 9,117,266  | 29        | 31,688,323  |
| 2017            | 172,844              | <1           | 897                | <1         | 801,577   | 2            | 2,884,538 | 6         | 34,826,589 | 69        | 11,430,306 | 23        | 50,116,751  |
| 2018            | 167,093              | 1            | 614                | <1         | 636,924   | 3            | 1,603,570 | 7         | 8,096,778  | 37        | 11,484,372 | 52        | 21,989,351  |
| 2019            | 184,096              | 1            | 1,634              | <1         | 1,011,740 | 3            | 1,717,764 | 5         | 21,165,714 | 63        | 9,369,771  | 28        | 33,450,719  |
| <b>Averages</b> |                      |              |                    |            |           |              |           |           |            |           |            |           |             |
| 1962–2018       | 297,527              | 2            | 1,772              | <1         | 1,322,721 | 4            | 2,167,796 | 6         | 30,716,944 | 73        | 6,149,061  | 16        | 40,655,107  |
| 2009–2018       | 284,590              | 1            | 1,051              | <1         | 1,095,420 | 3            | 2,627,364 | 6         | 37,125,997 | 67        | 10,515,339 | 24        | 51,649,760  |
| <b>Harvest</b>  |                      |              |                    |            |           |              |           |           |            |           |            |           |             |
| Max & year      | 483,330              | 2004         | 6,336              | 1994       | 3,190,960 | 1993         | 5,721,700 | 1994      | 94,786,940 | 2013      | 16,043,397 | 1996      | 112,453,971 |
| Min & year      | 167,093              | 2018         | 166                | 1983       | 244,855   | 1975         | 427,457   | 1975      | 3,109,343  | 1967      | 560,595    | 1969      | 5,691,033   |

<sup>a</sup> Annual Chinook salmon harvest is reported by troll season, October 1–September 30, since 1979 when the regulatory season was implemented.

<sup>b</sup> Jack Chinook are ≤28 inches. Chinook salmon of <21 inches may be retained and sold in the purse seine fishery, and Chinook of all sizes may be sold in the drift gillnet fishery. Jack fish ticket data were revised in 2012, for the years 2005–2012, to provide more accurate accounting of gillnet harvested Chinook salmon for PST accounting purposes. Chinook salmon in the drift gillnet fishery will be based on recording of all sizes as one category on fish tickets, and separate accounting of jacks will be based on port sampling data.



Table 2.—Number of active limited entry and interim use permits issued and fished in Southeast Alaska fisheries, 1975 to 2019.

| Year            | Purse Seine |        | Drift Gillnet |        | Set Gillnet |        | Hand Troll |        | Power Troll |        | Total  |        |
|-----------------|-------------|--------|---------------|--------|-------------|--------|------------|--------|-------------|--------|--------|--------|
|                 | Issued      | Fished | Issued        | Fished | Issued      | Fished | Issued     | Fished | Issued      | Fished | Issued | Fished |
| 1975            | 477         | 287    | 511           | 443    | 215         | 141    | 2,088      | 1,092  | 1,079       | 762    | 4,370  | 2,725  |
| 1976            | 418         | 280    | 487           | 432    | 159         | 133    | 2,082      | 1,238  | 998         | 745    | 4,144  | 2,828  |
| 1977            | 414         | 325    | 474           | 438    | 159         | 144    | 2,953      | 1,836  | 970         | 750    | 4,970  | 3,493  |
| 1978            | 420         | 376    | 491           | 474    | 164         | 155    | 3,923      | 2,624  | 976         | 816    | 5,974  | 4,445  |
| 1979            | 418         | 319    | 491           | 449    | 167         | 155    | 3,702      | 2,207  | 980         | 819    | 5,758  | 3,949  |
| 1980            | 418         | 335    | 489           | 445    | 167         | 159    | 2,436      | 1,667  | 974         | 842    | 4,484  | 3,448  |
| 1981            | 418         | 364    | 487           | 447    | 167         | 158    | 2,048      | 1,153  | 970         | 793    | 4,090  | 2,915  |
| 1982            | 421         | 370    | 487           | 431    | 164         | 147    | 1,914      | 1,067  | 968         | 810    | 3,954  | 2,825  |
| 1983            | 421         | 338    | 481           | 432    | 165         | 145    | 2,150      | 946    | 968         | 810    | 4,185  | 2,671  |
| 1984            | 423         | 383    | 481           | 437    | 164         | 140    | 2,147      | 860    | 963         | 795    | 4,178  | 2,615  |
| 1985            | 420         | 368    | 485           | 446    | 164         | 148    | 2,030      | 903    | 963         | 830    | 4,062  | 2,695  |
| 1986            | 420         | 368    | 488           | 460    | 164         | 154    | 1,983      | 804    | 957         | 827    | 4,012  | 2,613  |
| 1987            | 420         | 381    | 486           | 465    | 165         | 154    | 1,937      | 763    | 957         | 828    | 3,965  | 2,591  |
| 1988            | 420         | 394    | 485           | 470    | 165         | 159    | 1,870      | 777    | 956         | 828    | 3,896  | 2,628  |
| 1989            | 420         | 365    | 485           | 466    | 166         | 160    | 1,817      | 694    | 955         | 830    | 3,843  | 2,515  |
| 1990            | 420         | 360    | 486           | 465    | 166         | 158    | 1,782      | 699    | 956         | 839    | 3,810  | 2,521  |
| 1991            | 420         | 383    | 485           | 465    | 168         | 161    | 1,741      | 700    | 959         | 847    | 3,773  | 2,556  |
| 1992            | 420         | 354    | 485           | 467    | 170         | 159    | 1,689      | 645    | 957         | 837    | 3,721  | 2,462  |
| 1993            | 419         | 382    | 482           | 460    | 171         | 157    | 1,633      | 600    | 956         | 836    | 3,661  | 2,435  |
| 1994            | 418         | 390    | 483           | 446    | 171         | 150    | 1,579      | 547    | 954         | 804    | 3,605  | 2,337  |
| 1995            | 418         | 373    | 483           | 452    | 171         | 147    | 1,540      | 460    | 954         | 818    | 3,566  | 2,250  |
| 1996            | 417         | 357    | 484           | 439    | 171         | 139    | 1,501      | 412    | 967         | 737    | 3,540  | 2,084  |
| 1997            | 416         | 351    | 482           | 423    | 170         | 141    | 1,459      | 387    | 968         | 740    | 3,495  | 2,042  |
| 1998            | 416         | 377    | 479           | 422    | 170         | 142    | 1,409      | 304    | 967         | 732    | 3,441  | 1,977  |
| 1999            | 416         | 359    | 481           | 430    | 170         | 128    | 1,370      | 338    | 965         | 721    | 3,402  | 1,976  |
| 2000            | 416         | 356    | 480           | 422    | 170         | 125    | 1,329      | 315    | 963         | 712    | 3,358  | 1,930  |
| 2001            | 415         | 345    | 482           | 433    | 169         | 114    | 1,295      | 307    | 965         | 701    | 3,326  | 1,900  |
| 2002            | 415         | 273    | 482           | 391    | 167         | 87     | 1,247      | 253    | 965         | 666    | 3,276  | 1,670  |
| 2003            | 416         | 235    | 477           | 375    | 167         | 104    | 1,189      | 265    | 965         | 637    | 3,214  | 1,616  |
| 2004            | 414         | 209    | 478           | 348    | 168         | 112    | 1,139      | 324    | 961         | 688    | 3,160  | 1,681  |
| 2005            | 415         | 232    | 478           | 368    | 168         | 114    | 1,108      | 353    | 961         | 715    | 3,130  | 1,782  |
| 2006            | 414         | 230    | 477           | 358    | 167         | 104    | 1,104      | 371    | 961         | 737    | 3,123  | 1,800  |
| 2007            | 415         | 237    | 476           | 387    | 166         | 120    | 1,083      | 375    | 961         | 740    | 3,101  | 1,859  |
| 2008            | 380         | 212    | 475           | 392    | 165         | 128    | 1,065      | 375    | 961         | 745    | 3,046  | 1,852  |
| 2009            | 379         | 256    | 474           | 406    | 167         | 122    | 1,055      | 364    | 961         | 745    | 3,036  | 1,893  |
| 2010            | 379         | 235    | 474           | 422    | 167         | 127    | 1,044      | 339    | 962         | 729    | 3,026  | 1,852  |
| 2011            | 379         | 269    | 474           | 442    | 167         | 121    | 1,037      | 372    | 962         | 760    | 3,019  | 1,964  |
| 2012            | 315         | 233    | 474           | 445    | 168         | 113    | 1,019      | 353    | 961         | 743    | 2,937  | 1,887  |
| 2013            | 315         | 276    | 473           | 451    | 168         | 106    | 1,002      | 362    | 961         | 722    | 2,919  | 1,917  |
| 2014            | 315         | 260    | 473           | 431    | 168         | 117    | 992        | 346    | 962         | 756    | 2,910  | 1,910  |
| 2015            | 315         | 281    | 473           | 421    | 167         | 112    | 978        | 316    | 962         | 740    | 2,895  | 1,870  |
| 2016            | 315         | 254    | 473           | 424    | 167         | 109    | 959        | 269    | 961         | 745    | 2,866  | 1,801  |
| 2017            | 315         | 259    | 473           | 421    | 167         | 113    | 950        | 256    | 961         | 721    | 2,866  | 1,784  |
| 2018            | 315         | 242    | 474           | 421    | 166         | 102    | 945        | 235    | 961         | 669    | 2,861  | 1,669  |
| 2019            | 279         | 240    | 474           | 419    | 166         | 94     | 918        | 227    | 959         | 661    | 2,796  | 1,641  |
| <b>Averages</b> |             |        |               |        |             |        |            |        |             |        |        |        |
| 1975–2018       | 397         | 313    | 481           | 430    | 168         | 133    | 1,605      | 669    | 966         | 763    | 3,636  | 2,323  |
| 2009–2018       | 334         | 257    | 474           | 428    | 167         | 114    | 998        | 321    | 961         | 733    | 2,934  | 1,855  |

Notes: Data is provided beginning in the year salmon limited entry permits were first issued; this is 1975 for seine, drift gillnet, set gillnet, and power troll. Permits for hand troll were first issued in 1982.

Table 3.—Southeast Alaska commercial salmon harvest, in numbers, by harvest type and fishery, 2019.

| Fishery                                 | Chinook <sup>a</sup> | Jacks <sup>b</sup> | Sockeye   | Coho      | Pink       | Chum      | Total      |
|-----------------------------------------|----------------------|--------------------|-----------|-----------|------------|-----------|------------|
| <b>Total Purse Seine</b>                | 21,174               | 1,224              | 445,273   | 246,357   | 18,611,309 | 4,380,820 | 23,706,157 |
| Southern Purse Seine Total <sup>c</sup> | 18,029               | 1,141              | 384,964   | 192,739   | 16,123,054 | 1,330,136 | 18,050,063 |
| Southern Purse Seine Traditional        | 9,178                | 1,089              | 383,768   | 191,784   | 16,079,624 | 1,165,481 | 17,830,924 |
| Southern Purse Seine Hatchery Terminal  | 8,851                | 52                 | 1,196     | 955       | 43,430     | 164,655   | 219,139    |
| Northern Purse Seine Total <sup>d</sup> | 3,145                | 83                 | 60,309    | 53,618    | 2,488,255  | 3,050,684 | 5,656,094  |
| Northern Purse Seine Traditional        | 355                  | 6                  | 49,736    | 37,993    | 2,357,297  | 1,293,610 | 3,738,997  |
| Northern Purse Seine Hatchery Terminal  | 2,790                | 77                 | 10,573    | 15,625    | 130,958    | 1,757,074 | 1,917,097  |
| <b>Total Drift Gillnet</b>              | 20,846               | 0                  | 395,307   | 196,356   | 872,380    | 2,327,426 | 3,812,315  |
| Tree Point                              | 1,313                | 0                  | 15,986    | 28,800    | 204,971    | 182,457   | 433,527    |
| Prince of Wales                         | 1,073                | 0                  | 23,844    | 59,208    | 424,495    | 113,152   | 621,772    |
| Stikine                                 | 4,253                | 0                  | 6,591     | 9,478     | 10,884     | 50,653    | 81,859     |
| Taku-Snettisham                         | 1,201                | 0                  | 95,421    | 23,235    | 69,137     | 245,962   | 434,956    |
| Lynn Canal                              | 975                  | 0                  | 228,111   | 47,417    | 110,730    | 608,929   | 996,162    |
| Drift Gillnet Hatchery Terminal         | 12,031               | 0                  | 25,354    | 28,218    | 52,163     | 1,126,273 | 1,244,039  |
| <b>Set Gillnet</b>                      | 315                  | 0                  | 54,810    | 100,473   | 33,048     | 395       | 189,041    |
| <b>Total Troll</b>                      | 108,623              | 0                  | 6,260     | 973,406   | 70,413     | 269,576   | 1,428,278  |
| Hand Troll Total                        | 4,599                | 0                  | 265       | 29,269    | 3,642      | 1,664     | 39,439     |
| Hand Troll Traditional                  | 3,472                | 0                  | 254       | 28,557    | 3,524      | 1,418     | 37,225     |
| Hand Troll Hatchery Terminal            | 455                  | 0                  | 0         | 701       | 104        | 56        | 1,316      |
| Hand Troll Spring Fishery               | 672                  | 0                  | 11        | 11        | 14         | 190       | 898        |
| Power Troll Total                       | 104,024              | 0                  | 5,995     | 944,137   | 66,771     | 267,912   | 1,388,839  |
| Power Troll Traditional                 | 92,826               | 0                  | 5,871     | 937,099   | 63,897     | 228,600   | 1,328,293  |
| Power Troll Hatchery Terminal           | 1,488                | 0                  | 28        | 6,734     | 2,677      | 28,890    | 39,817     |
| Power Troll Spring Fishery              | 9,710                | 0                  | 96        | 304       | 197        | 10,422    | 20,729     |
| <b>Total Annette Island Reservation</b> | 1,429                | 0                  | 10,142    | 17,624    | 1,239,672  | 97,687    | 1,366,554  |
| Annette Island Purse Seine              | 188                  | 0                  | 7,887     | 3,433     | 932,514    | 39,437    | 983,459    |
| Annette Island Drift Gillnet            | 505                  | 0                  | 2,255     | 14,169    | 307,147    | 58,249    | 382,325    |
| Total Annette Island Troll              | 736                  | 0                  | 0         | 22        | 11         | 1         | 770        |
| Annette Island Hand Troll               | 0                    | 0                  | 0         | 0         | 0          | 0         | 0          |
| Annette Island Power Troll              | 736                  | 0                  | 0         | 22        | 11         | 1         | 770        |
| <b>Hatchery Cost Recovery</b>           | 31,326               | 410                | 97,181    | 181,360   | 313,301    | 2,246,365 | 2,869,943  |
| <b>Miscellaneous<sup>e</sup></b>        | 383                  | 0                  | 2,767     | 2,188     | 25,591     | 47,502    | 78,431     |
| Southern Totals <sup>f</sup>            | 69,661               | 1,141              | 442,555   | 527,220   | 18,038,549 | 2,150,768 | 21,229,894 |
| Northern Totals <sup>g</sup>            | 110,672              | 493                | 514,369   | 1,079,642 | 3,094,111  | 7,218,578 | 12,017,865 |
| Yakutat <sup>h</sup>                    | 3,763                | 0                  | 54,816    | 110,902   | 33,054     | 425       | 202,960    |
| <b>Region Totals</b>                    | 184,096              | 1,634              | 1,011,740 | 1,717,764 | 21,165,714 | 9,369,771 | 33,450,719 |

<sup>a</sup> Harvest accounting period for the Chinook salmon season is from October 1, 2018, through September 30, 2019.

<sup>b</sup> Jack Chinook salmon are ≤28 inches. Chinook salmon of <28 inches may be retained and sold in the purse seine fishery, and Chinook of all sizes may be sold in the drift gillnet fishery. Jack fish ticket data were revised in 2012, for the years 2005–2012, to provide more accurate accounting of gillnet harvested Chinook salmon PST accounting purposes. Chinook salmon in the drift gillnet fishery will be based on recording of all sizes as one category on fish tickets, and separate accounting of jacks for PST purposes will be based on port sampling data. The PST accounts for Large Chinook salmon, ≥28 inches overall length, as Treaty Chinook.

<sup>c</sup> Southern Southeast Alaska includes Districts 101 to 108.

<sup>d</sup> Northern Southeast Alaska includes Districts 109 to 114.

<sup>e</sup> Includes salmon that were confiscated, caught in sportfish salmon derbies, or commercial test fisheries, and sold.

<sup>f</sup> Districts 101 to 108, 150, and 152 (troll fishery October 1–September 30).

<sup>g</sup> Districts 109 to 116, 154, 156, and 157 (troll fishery October 1–September 30).

<sup>h</sup> Districts 181, 182, 183, 185, 186, 189, 191, 192 (troll fishery October 1–September 30).

Table 4.—Southeast Alaska annual commercial total salmon harvest by harvest type, in numbers and percent, 1989 to 2019.

| Year            | Seine      | %    | Driftnet  | %    | Setnet  | %    | Troll <sup>a</sup> | %    | Annette I. | %    | Hatchery <sup>b</sup> | %    | Misc <sup>c</sup> | %    | Total       |
|-----------------|------------|------|-----------|------|---------|------|--------------------|------|------------|------|-----------------------|------|-------------------|------|-------------|
| 1989            | 54,320,898 | 82   | 4,450,699 | 7    | 580,479 | 1    | 3,511,698          | 5    | 2,691,297  | 4    | 444,565               | 1    | 41,733            | <1   | 66,041,369  |
| 1990            | 30,330,838 | 76   | 2,917,511 | 7    | 530,825 | 1    | 2,963,172          | 7    | 1,727,293  | 4    | 1,414,924             | 4    | 44,645            | <1   | 39,929,208  |
| 1991            | 62,191,634 | 88   | 2,803,393 | 4    | 404,417 | 1    | 2,447,041          | 3    | 1,127,702  | 2    | 1,811,164             | 3    | 68,797            | <1   | 70,854,148  |
| 1992            | 34,808,120 | 75   | 3,832,020 | 8    | 632,425 | 1    | 2,894,863          | 6    | 1,190,707  | 3    | 3,094,606             | 7    | 45,851            | <1   | 46,498,592  |
| 1993            | 60,196,878 | 83   | 3,946,447 | 5    | 598,618 | 1    | 4,075,696          | 6    | 1,725,815  | 2    | 1,727,084             | 2    | 49,886            | <1   | 72,320,424  |
| 1994            | 60,075,945 | 79   | 4,255,756 | 6    | 570,976 | 1    | 4,948,777          | 7    | 725,117    | 1    | 5,386,836             | 7    | 76,180            | <1   | 76,039,587  |
| 1995            | 51,650,711 | 80   | 4,885,907 | 8    | 514,753 | 1    | 2,907,372          | 5    | 2,165,624  | 3    | 2,374,544             | 4    | 53,726            | <1   | 64,552,637  |
| 1996            | 72,547,199 | 84   | 4,054,104 | 5    | 474,783 | 1    | 3,277,938          | 4    | 1,066,239  | 1    | 5,352,633             | 6    | 71,534            | <1   | 86,844,430  |
| 1997            | 32,418,643 | 71   | 3,861,436 | 8    | 530,584 | 1    | 2,313,468          | 5    | 649,343    | 1    | 5,655,779             | 12   | 91,387            | <1   | 45,520,640  |
| 1998            | 49,057,331 | 78   | 4,332,833 | 7    | 365,039 | 1    | 2,213,999          | 4    | 1,070,302  | 2    | 5,700,976             | 9    | 89,256            | <1   | 62,829,736  |
| 1999            | 81,768,382 | 84   | 4,347,194 | 4    | 351,396 | <1   | 3,039,972          | 3    | 1,068,721  | 1    | 7,053,481             | 7    | 139,129           | <1   | 97,768,275  |
| 2000            | 27,180,728 | 69   | 3,918,771 | 10   | 338,124 | 1    | 1,953,985          | 5    | 1,128,736  | 3    | 5,028,361             | 13   | 95,943            | <1   | 39,644,648  |
| 2001            | 67,965,608 | 84   | 4,141,301 | 5    | 382,060 | <1   | 2,734,661          | 3    | 2,224,126  | 3    | 3,854,849             | 5    | 88,160            | <1   | 81,390,765  |
| 2002            | 45,891,149 | 80   | 3,129,105 | 5    | 331,848 | 1    | 1,845,766          | 3    | 1,548,231  | 3    | 4,378,603             | 8    | 96,389            | <1   | 57,221,091  |
| 2003            | 55,331,699 | 81   | 3,926,654 | 6    | 281,529 | <1   | 2,004,826          | 3    | 674,026    | 1    | 5,759,988             | 8    | 93,598            | <1   | 68,072,320  |
| 2004            | 49,621,064 | 80   | 3,914,562 | 6    | 312,708 | 1    | 2,503,067          | 4    | 876,978    | 1    | 4,978,262             | 8    | 104,429           | <1   | 62,311,070  |
| 2005            | 59,823,736 | 85   | 3,832,649 | 5    | 223,835 | <1   | 2,670,355          | 4    | 706,778    | 1    | 3,264,074             | 5    | 146,956           | <1   | 70,668,383  |
| 2006            | 16,281,579 | 56   | 4,796,219 | 17   | 315,892 | 1    | 1,867,125          | 6    | 475,603    | 2    | 5,233,643             | 18   | 77,642            | <1   | 29,047,703  |
| 2007            | 46,461,718 | 79   | 4,176,973 | 7    | 405,180 | 1    | 1,947,109          | 3    | 1,092,752  | 2    | 4,340,585             | 7    | 204,904           | <1   | 58,629,221  |
| 2008            | 17,811,215 | 63   | 3,787,192 | 13   | 255,562 | 1    | 1,533,878          | 5    | 1,139,310  | 4    | 3,537,129             | 13   | 17,864            | <1   | 28,082,150  |
| 2009            | 39,070,600 | 76   | 4,051,167 | 8    | 318,993 | 1    | 2,182,554          | 4    | 1,951,852  | 4    | 3,975,060             | 8    | 41,431            | <1   | 51,591,657  |
| 2010            | 24,226,360 | 65   | 4,473,808 | 12   | 445,692 | 1    | 2,022,651          | 5    | 1,742,725  | 5    | 4,378,443             | 12   | 59,940            | <1   | 37,349,619  |
| 2011            | 58,827,114 | 80   | 5,229,724 | 7    | 500,818 | 1    | 2,760,759          | 4    | 1,255,465  | 2    | 5,081,084             | 7    | 63,685            | <1   | 73,718,649  |
| 2012            | 24,466,785 | 66   | 5,246,512 | 14   | 253,904 | 1    | 2,058,871          | 6    | 1,342,408  | 4    | 3,563,712             | 10   | 60,964            | <1   | 36,993,156  |
| 2013            | 95,415,053 | 85   | 6,018,624 | 5    | 396,575 | <1   | 4,285,439          | 4    | 2,823,494  | 3    | 3,433,823             | 3    | 80,963            | <1   | 112,453,971 |
| 2014            | 37,174,155 | 75   | 4,879,094 | 10   | 301,169 | 1    | 2,882,972          | 6    | 2,166,575  | 4    | 2,336,055             | 5    | 23,825            | <1   | 49,763,845  |
| 2015            | 38,274,679 | 75   | 5,396,585 | 11   | 282,196 | 1    | 2,200,627          | 4    | 1,544,035  | 3    | 2,990,176             | 6    | 143,981           | <1   | 50,832,279  |
| 2016            | 19,392,679 | 61   | 4,739,184 | 15   | 259,759 | 1    | 1,888,100          | 6    | 1,884,040  | 6    | 3,450,634             | 11   | 73,468            | <1   | 31,687,864  |
| 2017            | 36,674,989 | 73   | 5,046,734 | 10   | 355,300 | 1    | 2,743,528          | 5    | 1,177,403  | 2    | 4,006,267             | 8    | 112,519           | <1   | 50,116,740  |
| 2018            | 12,237,848 | 56   | 3,589,256 | 16   | 132,666 | 1    | 1,634,899          | 7    | 532,538    | 2    | 3,823,877             | 17   | 38,267            | <1   | 21,989,351  |
| 2019            | 23,706,157 | 71   | 3,812,315 | 11   | 189,041 | 1    | 1,428,278          | 4    | 1,366,554  | 4    | 2,869,943             | 9    | 78,431            | <1   | 33,450,719  |
| <b>Averages</b> |            |      |           |      |         |      |                    |      |            |      |                       |      |                   |      |             |
| 1962–2018       | 31,898,352 | 76   | 3,156,932 | 10   | 345,801 | 1    | 2,028,199          | 6    | 1,169,373  | 3    | —                     | —    | —                 | —    | 40,615,805  |
| 2009–2018       | 38,576,026 | 71   | 4,867,069 | 11   | 324,707 | 1    | 2,466,040          | 5    | 1,642,054  | 4    | 3,703,913             | 9    | 69,904            | <1   | 51,648,553  |
| <b>Harvest</b>  |            |      |           |      |         |      |                    |      |            |      |                       |      |                   |      |             |
| Max & year      | 95,415,053 | 2013 | 6,018,624 | 2013 | 632,425 | 1992 | 4,948,777          | 1994 | 2,823,494  | 2013 | 7,053,481             | 1999 | 204,904           | 2007 | 112,453,971 |
| Min & year      | 3,929,881  | 1975 | 868,518   | 1975 | 132,666 | 2018 | 582,091            | 1975 | 30,866     | 1969 | 752                   | 1980 | 6,931             | 1981 | 5,688,347   |

<sup>a</sup> Salmon harvest is reported by calendar year except for the troll fishery. Troll is reported by season (October 1–September 30) beginning October 1, 1979, for the 1980 season.

<sup>b</sup> Includes salmon caught and sold in private, state, and federal hatchery fisheries and carcass sales.

<sup>c</sup> Includes confiscations, commercial test fisheries, and sportfish salmon derbies where fish were sold.

Table 5.— Southeast Alaska annual commercial Chinook salmon harvest by harvest type, in numbers and percent, 1989 to 2019.

| Year            | Seine  | %    | Driftnet | %    | Setnet | %    | Troll   | %    | Annette I. | %    | Hatchery | %    | Misc <sup>a</sup> | %    | Total   |
|-----------------|--------|------|----------|------|--------|------|---------|------|------------|------|----------|------|-------------------|------|---------|
| 1989            | 17,103 | 6    | 9,579    | 3    | 798    | <1   | 235,609 | 83   | 892        | <1   | 19,680   | 7    | 1,275             | <1   | 284,936 |
| 1990            | 14,777 | 4    | 14,693   | 4    | 663    | <1   | 287,100 | 83   | 1,840      | 1    | 26,692   | 8    | 390               | <1   | 346,155 |
| 1991            | 17,107 | 5    | 18,457   | 6    | 1,747  | 1    | 263,153 | 79   | 4,015      | 1    | 25,995   | 8    | 703               | <1   | 331,177 |
| 1992            | 20,320 | 9    | 11,285   | 5    | 2,025  | 1    | 183,353 | 78   | 1,210      | 1    | 16,723   | 7    | 1,369             | 1    | 236,285 |
| 1993            | 12,291 | 4    | 18,011   | 6    | 1,311  | <1   | 226,561 | 80   | 639        | <1   | 23,246   | 8    | 2,749             | 1    | 284,808 |
| 1994            | 21,089 | 9    | 16,735   | 7    | 3,820  | 2    | 186,299 | 75   | 230        | <1   | 17,750   | 7    | 1,513             | 1    | 247,436 |
| 1995            | 26,777 | 12   | 13,342   | 6    | 9,374  | 4    | 138,117 | 63   | 133        | <1   | 31,405   | 14   | 1,281             | 1    | 220,429 |
| 1996            | 23,155 | 11   | 9,982    | 5    | 4,854  | 2    | 141,447 | 66   | 243        | <1   | 33,496   | 16   | 1,410             | 1    | 214,587 |
| 1997            | 10,841 | 4    | 11,006   | 4    | 3,264  | 1    | 246,402 | 81   | 505        | <1   | 30,144   | 10   | 2,294             | 1    | 304,456 |
| 1998            | 16,167 | 7    | 5,937    | 3    | 2,804  | 1    | 192,066 | 82   | 304        | <1   | 15,943   | 7    | 1,390             | 1    | 234,611 |
| 1999            | 20,849 | 11   | 8,983    | 5    | 5,108  | 3    | 146,218 | 74   | 744        | <1   | 15,100   | 8    | 1,093             | 1    | 198,095 |
| 2000            | 22,044 | 9    | 13,475   | 6    | 2,460  | 1    | 158,791 | 68   | 4,769      | 2    | 31,637   | 14   | 719               | <1   | 233,895 |
| 2001            | 22,314 | 9    | 13,644   | 6    | 2,631  | 1    | 153,280 | 62   | 4,156      | 2    | 49,028   | 20   | 776               | <1   | 245,829 |
| 2002            | 18,725 | 5    | 10,216   | 3    | 2,510  | 1    | 325,368 | 84   | 1,818      | <1   | 28,445   | 7    | 819               | <1   | 387,901 |
| 2003            | 25,236 | 6    | 10,704   | 3    | 3,842  | 1    | 330,719 | 79   | 780        | <1   | 45,723   | 11   | 868               | <1   | 417,872 |
| 2004            | 39,984 | 8    | 20,148   | 4    | 2,734  | 1    | 354,607 | 73   | 1,914      | <1   | 62,470   | 13   | 2,170             | <1   | 484,027 |
| 2005            | 20,421 | 5    | 55,754   | 12   | 766    | <1   | 338,024 | 75   | 1,697      | <1   | 29,408   | 7    | 1,922             | <1   | 447,992 |
| 2006            | 25,970 | 7    | 47,202   | 13   | 1,208  | <1   | 282,258 | 76   | 806        | <1   | 12,794   | 3    | 1,403             | <1   | 371,641 |
| 2007            | 28,398 | 8    | 30,067   | 8    | 1,562  | <1   | 267,986 | 75   | 1,232      | <1   | 28,167   | 8    | 1,817             | 1    | 359,229 |
| 2008            | 16,018 | 7    | 32,044   | 13   | 850    | <1   | 151,852 | 62   | 743        | <1   | 41,799   | 17   | 931               | <1   | 244,237 |
| 2009            | 29,888 | 11   | 25,221   | 9    | 1,533  | 1    | 175,335 | 65   | 1,033      | <1   | 35,107   | 13   | 516               | <1   | 268,633 |
| 2010            | 16,709 | 6    | 19,364   | 7    | 501    | <1   | 195,488 | 75   | 943        | <1   | 28,135   | 11   | 530               | <1   | 261,670 |
| 2011            | 27,770 | 8    | 31,010   | 9    | 1,123  | <1   | 242,560 | 70   | 1,705      | <1   | 41,301   | 12   | 976               | <1   | 346,445 |
| 2012            | 21,713 | 8    | 26,243   | 9    | 942    | <1   | 209,061 | 75   | 1,623      | 1    | 18,809   | 7    | 1,582             | 1    | 279,973 |
| 2013            | 24,516 | 10   | 34,525   | 14   | 1,401  | 1    | 149,485 | 62   | 1,453      | 1    | 30,665   | 13   | 144               | <1   | 242,189 |
| 2014            | 28,290 | 7    | 27,877   | 7    | 1,403  | <1   | 355,426 | 83   | 1,418      | <1   | 13,194   | 3    | 767               | <1   | 428,375 |
| 2015            | 30,067 | 9    | 29,267   | 8    | 934    | <1   | 269,813 | 77   | 2,190      | 1    | 17,521   | 5    | 1,010             | <1   | 350,802 |
| 2016            | 27,558 | 8    | 20,701   | 6    | 343    | <1   | 276,043 | 82   | 1,731      | 1    | 9,136    | 3    | 905               | <1   | 336,417 |
| 2017            | 11,344 | 7    | 17,057   | 10   | 946    | 1    | 129,237 | 74   | 1,985      | 1    | 12,725   | 7    | 447               | <1   | 173,741 |
| 2018            | 16,752 | 10   | 21,276   | 13   | 295    | <1   | 107,103 | 64   | 2,001      | 1    | 20,060   | 12   | 220               | <1   | 167,707 |
| 2019            | 22,398 | 12   | 20,846   | 11   | 315    | <1   | 108,623 | 58   | 1,429      | 1    | 31,736   | 17   | 383               | <1   | 185,730 |
| <b>Averages</b> |        |      |          |      |        |      |         |      |            |      |          |      |                   |      |         |
| 1962–2018       | 16,835 | 6    | 16,326   | 6    | 2,015  | 1    | 247,168 | 82   | 1,020      | <1   | —        | —    | —                 | —    | 298,502 |
| 2009–2018       | 23,461 | 8    | 25,254   | 9    | 942    | <1   | 210,955 | 73   | 1,608      | 1    | 22,665   | 9    | 710               | <1   | 285,595 |
| <b>Harvest</b>  |        |      |          |      |        |      |         |      |            |      |          |      |                   |      |         |
| Max & year      | 39,984 | 2004 | 55,754   | 2005 | 9,374  | 1995 | 375,427 | 1978 | 4,769      | 2000 | 62,470   | 2004 | 2,749             | 1993 | 484,027 |
| Min & year      | 1,428  | 1976 | 4,598    | 1983 | 295    | 2018 | 99,705  | 2018 | 3          | 1966 | 937      | 1984 | 6                 | 1983 | 160,309 |

Note: Chinook salmon harvest is reported by season (October 1–September 30) beginning October 1, 1979, for the 1980 season.

<sup>a</sup> Includes confiscations, test fisheries, and sanctioned sportfish salmon derbies where fish were sold.

Table 6.— Southeast Alaska annual commercial total sockeye salmon harvest by harvest type, in numbers and percent, 1989 to 2019.

| Year            | Seine     | %    | Driftnet  | %    | Setnet  | %    | Troll  | %    | Annette I. | %    | Hatchery | %    | Misc <sup>a</sup> | %    | Total     |
|-----------------|-----------|------|-----------|------|---------|------|--------|------|------------|------|----------|------|-------------------|------|-----------|
| 1989            | 823,185   | 39   | 893,976   | 42   | 329,454 | 16   | 20,173 | 1    | 50,496     | 2    | 66       | <1   | 7,490             | <1   | 2,124,840 |
| 1990            | 965,918   | 45   | 767,492   | 36   | 344,606 | 16   | 9,175  | <1   | 59,644     | 3    | 75       | <1   | 8,806             | <1   | 2,155,716 |
| 1991            | 1,051,269 | 51   | 711,874   | 34   | 229,903 | 11   | 9,806  | <1   | 45,130     | 2    | 1,478    | <1   | 14,126            | 1    | 2,063,586 |
| 1992            | 1,336,889 | 50   | 922,069   | 35   | 314,175 | 12   | 22,854 | 1    | 61,169     | 2    | 2,108    | <1   | 7,158             | <1   | 2,666,422 |
| 1993            | 1,690,471 | 53   | 1,021,899 | 32   | 345,887 | 11   | 25,337 | 1    | 95,063     | 3    | 7,545    | <1   | 4,758             | <1   | 3,190,960 |
| 1994            | 1,430,610 | 60   | 686,792   | 29   | 206,760 | 9    | 21,777 | 1    | 41,615     | 2    | 3,322    | <1   | 1,613             | <1   | 2,392,489 |
| 1995            | 907,120   | 51   | 640,971   | 36   | 153,723 | 9    | 27,323 | 2    | 55,503     | 3    | 8,448    | <1   | 2,243             | <1   | 1,795,331 |
| 1996            | 1,514,523 | 54   | 1,026,591 | 37   | 209,029 | 7    | 11,024 | <1   | 29,859     | 1    | 6,636    | <1   | 2,186             | <1   | 2,799,848 |
| 1997            | 1,578,021 | 64   | 645,516   | 26   | 110,078 | 4    | 39,428 | 2    | 41,365     | 2    | 58,879   | 2    | 4,107             | <1   | 2,477,394 |
| 1998            | 732,790   | 53   | 501,291   | 36   | 77,189  | 6    | 6,476  | <1   | 16,554     | 1    | 34,590   | 3    | 6,468             | <1   | 1,375,358 |
| 1999            | 425,298   | 37   | 545,681   | 47   | 128,751 | 11   | 5,730  | <1   | 21,867     | 2    | 24,075   | 2    | 9,328             | 1    | 1,160,730 |
| 2000            | 489,257   | 40   | 496,614   | 40   | 99,182  | 8    | 4,467  | <1   | 22,529     | 2    | 107,244  | 9    | 10,097            | 1    | 1,229,390 |
| 2001            | 1,013,151 | 50   | 687,476   | 34   | 141,449 | 7    | 8,992  | <1   | 41,245     | 2    | 138,233  | 7    | 4,684             | <1   | 2,035,230 |
| 2002            | 154,478   | 19   | 464,138   | 58   | 112,656 | 14   | 1,247  | <1   | 34,821     | 4    | 36,859   | 5    | 2,248             | <1   | 806,447   |
| 2003            | 681,418   | 45   | 598,679   | 39   | 154,384 | 10   | 4,596  | <1   | 7,806      | 1    | 75,869   | 5    | 2,604             | <1   | 1,525,356 |
| 2004            | 900,557   | 44   | 798,096   | 39   | 88,282  | 4    | 5,009  | <1   | 30,743     | 2    | 210,665  | 10   | 4,393             | <1   | 2,037,745 |
| 2005            | 898,515   | 56   | 462,209   | 29   | 79,221  | 5    | 13,277 | 1    | 13,285     | 1    | 140,245  | 9    | 1,083             | <1   | 1,607,835 |
| 2006            | 413,938   | 31   | 625,667   | 47   | 138,510 | 10   | 8,084  | 1    | 20,908     | 2    | 124,109  | 9    | 2,280             | <1   | 1,333,496 |
| 2007            | 1,063,704 | 56   | 501,765   | 26   | 236,289 | 12   | 6,439  | <1   | 19,579     | 1    | 74,419   | 4    | 2,607             | <1   | 1,904,802 |
| 2008            | 74,389    | 17   | 264,877   | 61   | 35,227  | 8    | 1,253  | <1   | 5,770      | 1    | 53,981   | 12   | 805               | <1   | 436,302   |
| 2009            | 307,436   | 33   | 408,336   | 44   | 105,825 | 11   | 2,929  | <1   | 15,036     | 2    | 85,049   | 9    | 1,138             | <1   | 925,749   |
| 2010            | 151,430   | 21   | 391,225   | 54   | 122,022 | 17   | 1,923  | <1   | 14,769     | 2    | 38,334   | 5    | 1,192             | <1   | 720,895   |
| 2011            | 499,289   | 40   | 517,994   | 42   | 167,704 | 13   | 5,190  | <1   | 29,329     | 2    | 22,001   | 2    | 938               | <1   | 1,242,445 |
| 2012            | 170,345   | 18   | 498,318   | 53   | 124,780 | 13   | 3,231  | <1   | 22,091     | 2    | 125,664  | 13   | 2,790             | <1   | 947,219   |
| 2013            | 282,350   | 29   | 456,014   | 47   | 168,356 | 17   | 5,019  | 1    | 10,901     | 1    | 49,609   | 5    | 2,416             | <1   | 974,665   |
| 2014            | 900,955   | 54   | 497,968   | 30   | 116,435 | 7    | 7,289  | <1   | 21,675     | 1    | 123,029  | 7    | 2,581             | <1   | 1,669,932 |
| 2015            | 908,663   | 59   | 389,979   | 26   | 82,748  | 5    | 6,977  | <1   | 26,633     | 2    | 111,381  | 7    | 2,393             | <1   | 1,528,774 |
| 2016            | 610,532   | 41   | 622,390   | 41   | 93,052  | 6    | 6,699  | <1   | 22,185     | 1    | 148,032  | 10   | 3,094             | <1   | 1,505,984 |
| 2017            | 287,857   | 36   | 239,367   | 30   | 120,665 | 15   | 5,454  | 1    | 11,275     | 1    | 135,018  | 17   | 1,737             | <1   | 801,373   |
| 2018            | 230,931   | 36   | 226,707   | 36   | 7,213   | 1    | 5,182  | 1    | 6,299      | 1    | 158,537  | 25   | 2,055             | <1   | 636,924   |
| 2019            | 445,273   | 44   | 395,307   | 39   | 54,810  | 5    | 6,260  | 1    | 10,142     | 1    | 97,181   | 10   | 2,767             | <1   | 1,011,740 |
| <b>Averages</b> |           |      |           |      |         |      |        |      |            |      |          |      |                   |      |           |
| 1962–2018       | 595,692   | 42   | 508,604   | 40   | 145,976 | 12   | 6,977  | <1   | 25,984     | 2    | —        | —    | —                 | —    | 1,322,691 |
| 2009–2018       | 434,979   | 37   | 424,830   | 40   | 110,880 | 11   | 4,989  | <1   | 18,019     | 2    | 99,665   | 10   | 2,033             | <1   | 1,095,396 |
| <b>Harvest</b>  |           |      |           |      |         |      |        |      |            |      |          |      |                   |      |           |
| Max & year      | 1,690,471 | 1993 | 1,026,591 | 1996 | 345,887 | 1993 | 39,428 | 1997 | 95,063     | 1993 | 210,665  | 2004 | 14,126            | 1991 | 3,190,960 |
| Min & year      | 61,784    | 1975 | 108,574   | 1975 | 7,213   | 2018 | 157    | 1967 | 622        | 1975 | 1        | 1981 | 178               | 1981 | 244,855   |

<sup>a</sup> Includes confiscations, commercial test fisheries, and sportfish salmon derbies where fish were sold.

Table 7.— Southeast Alaska annual commercial total coho salmon harvest by harvest type, in numbers and percent, 1989 to 2019.

| Year            | Seine   | %    | Driftnet | %    | Setnet  | %    | Troll     | %    | Annette I. | %    | Hatchery | %    | Misc <sup>a</sup> | %    | Total     |
|-----------------|---------|------|----------|------|---------|------|-----------|------|------------|------|----------|------|-------------------|------|-----------|
| 1989            | 330,989 | 15   | 234,423  | 11   | 176,773 | 8    | 1,415,517 | 64   | 23,870     | 1    | 18,921   | 1    | 3,551             | <1   | 2,204,044 |
| 1990            | 372,471 | 13   | 351,039  | 12   | 148,891 | 5    | 1,832,414 | 64   | 35,104     | 1    | 125,762  | 4    | 2,536             | <1   | 2,868,217 |
| 1991            | 405,592 | 13   | 545,376  | 17   | 166,731 | 5    | 1,718,318 | 54   | 63,146     | 2    | 294,490  | 9    | 3,350             | <1   | 3,197,003 |
| 1992            | 488,399 | 13   | 645,159  | 17   | 290,095 | 8    | 1,929,832 | 52   | 71,282     | 2    | 268,913  | 7    | 2,529             | <1   | 3,696,209 |
| 1993            | 473,138 | 13   | 417,681  | 11   | 237,446 | 6    | 2,395,874 | 65   | 32,690     | 1    | 106,476  | 3    | 2,130             | <1   | 3,665,435 |
| 1994            | 967,691 | 17   | 698,125  | 12   | 343,843 | 6    | 3,467,541 | 61   | 48,900     | 1    | 188,847  | 3    | 6,753             | <1   | 5,721,700 |
| 1995            | 617,777 | 18   | 415,158  | 12   | 295,030 | 9    | 1,750,167 | 52   | 51,452     | 2    | 215,431  | 6    | 663               | <1   | 3,345,678 |
| 1996            | 441,457 | 14   | 368,570  | 12   | 227,802 | 7    | 1,906,312 | 60   | 42,044     | 1    | 166,941  | 5    | 3,825             | <1   | 3,156,951 |
| 1997            | 183,693 | 9    | 131,240  | 7    | 322,776 | 16   | 1,170,288 | 59   | 30,846     | 2    | 135,179  | 7    | 405               | <1   | 1,974,427 |
| 1998            | 464,716 | 16   | 412,446  | 14   | 197,629 | 7    | 1,636,711 | 55   | 39,467     | 1    | 234,675  | 8    | 3,436             | <1   | 2,989,080 |
| 1999            | 416,415 | 11   | 351,598  | 10   | 187,055 | 5    | 2,272,461 | 63   | 49,365     | 1    | 349,200  | 10   | 4,140             | <1   | 3,630,234 |
| 2000            | 206,479 | 11   | 167,623  | 9    | 170,948 | 9    | 1,125,219 | 57   | 18,189     | 1    | 268,171  | 14   | 399               | <1   | 1,957,028 |
| 2001            | 542,643 | 16   | 294,441  | 9    | 205,344 | 6    | 1,845,609 | 56   | 57,055     | 2    | 352,904  | 11   | 2,936             | <1   | 3,300,932 |
| 2002            | 469,680 | 14   | 436,612  | 13   | 200,888 | 6    | 1,315,080 | 41   | 64,880     | 2    | 749,889  | 23   | 5,487             | <1   | 3,242,516 |
| 2003            | 394,168 | 16   | 434,234  | 17   | 74,343  | 3    | 1,223,458 | 49   | 39,879     | 2    | 328,650  | 13   | 3,643             | <1   | 2,498,375 |
| 2004            | 399,267 | 13   | 316,192  | 10   | 196,930 | 6    | 1,914,945 | 62   | 30,883     | 1    | 221,721  | 7    | 4,725             | <1   | 3,084,663 |
| 2005            | 341,295 | 11   | 272,873  | 9    | 82,887  | 3    | 2,034,874 | 68   | 35,204     | 1    | 231,341  | 8    | 4,310             | <1   | 3,002,784 |
| 2006            | 109,498 | 5    | 252,449  | 12   | 86,085  | 4    | 1,362,915 | 65   | 30,287     | 1    | 246,062  | 12   | 4,579             | <1   | 2,091,875 |
| 2007            | 247,568 | 12   | 175,286  | 8    | 76,550  | 4    | 1,376,679 | 67   | 35,185     | 2    | 146,797  | 7    | 4,578             | <1   | 2,062,643 |
| 2008            | 208,196 | 9    | 337,447  | 14   | 153,712 | 6    | 1,291,821 | 54   | 48,632     | 2    | 340,538  | 14   | 1,127             | <1   | 2,381,473 |
| 2009            | 283,431 | 11   | 320,910  | 12   | 133,808 | 5    | 1,585,703 | 60   | 51,495     | 2    | 246,285  | 9    | 138               | <1   | 2,621,770 |
| 2010            | 193,223 | 7    | 505,310  | 20   | 161,460 | 6    | 1,342,919 | 52   | 85,055     | 3    | 299,129  | 12   | 499               | <1   | 2,587,595 |
| 2011            | 347,132 | 15   | 237,976  | 10   | 125,830 | 5    | 1,313,888 | 57   | 53,336     | 2    | 232,531  | 10   | 639               | <1   | 2,311,332 |
| 2012            | 275,426 | 13   | 265,357  | 13   | 98,677  | 5    | 1,201,520 | 58   | 42,468     | 2    | 201,044  | 10   | 2,229             | <1   | 2,086,721 |
| 2013            | 545,667 | 14   | 441,552  | 11   | 158,046 | 4    | 2,392,138 | 62   | 50,477     | 1    | 285,491  | 7    | 3,774             | <1   | 3,877,145 |
| 2014            | 388,692 | 10   | 554,301  | 15   | 161,977 | 4    | 2,245,272 | 59   | 51,275     | 1    | 387,988  | 10   | 1,604             | <1   | 3,791,109 |
| 2015            | 284,301 | 13   | 251,058  | 12   | 129,069 | 6    | 1,240,195 | 57   | 34,100     | 2    | 221,087  | 10   | 4,133             | <1   | 2,163,943 |
| 2016            | 257,065 | 11   | 263,968  | 11   | 144,032 | 6    | 1,387,055 | 59   | 45,823     | 2    | 231,478  | 10   | 2,779             | <1   | 2,332,200 |
| 2017            | 270,043 | 9    | 158,634  | 6    | 140,844 | 5    | 2,150,880 | 75   | 35,862     | 1    | 122,289  | 4    | 4,404             | <1   | 2,882,956 |
| 2018            | 154,176 | 10   | 258,883  | 16   | 95,954  | 6    | 938,433   | 59   | 16,712     | 1    | 136,604  | 9    | 2,808             | <1   | 1,603,570 |
| 2019            | 246,357 | 14   | 196,356  | 11   | 100,473 | 6    | 973,406   | 57   | 17,624     | 1    | 181,360  | 11   | 2,188             | <1   | 1,717,764 |
| <b>Averages</b> |         |      |          |      |         |      |           |      |            |      |          |      |                   |      |           |
| 1962–2018       | 327,950 | 16   | 265,420  | 13   | 140,773 | 7    | 1,269,220 | 58   | 28,568     | 1    | —        | —    | —                 | —    | 2,167,306 |
| 2009–2018       | 299,916 | 11   | 325,795  | 13   | 134,970 | 5    | 1,579,800 | 60   | 46,660     | 2    | 236,393  | 9    | 2,301             | <1   | 2,625,834 |
| <b>Harvest</b>  |         |      |          |      |         |      |           |      |            |      |          |      |                   |      |           |
| Max & year      | 967,691 | 1994 | 698,125  | 1994 | 343,843 | 1994 | 3,467,541 | 1994 | 85,055     | 2010 | 749,889  | 2002 | 6,753             | 1994 | 5,721,700 |
| Min & year      | 70,193  | 1975 | 65,101   | 1969 | 30,279  | 1970 | 214,219   | 1975 | 324        | 1973 | 4,220    | 1983 | 23                | 1980 | 424,757   |

<sup>a</sup> Includes confiscations, commercial test fisheries, and sportfish salmon derbies where fish were sold.

Table 8.—Southeast Alaska annual commercial total pink salmon harvest by harvest type, in numbers and percent, 1989 to 2019.

| Year            | Seine      | %    | Driftnet  | %    | Setnet  | %    | Troll     | %    | Annette I. | %    | Hatchery  | %    | Misc. <sup>a</sup> | %    | Total      |
|-----------------|------------|------|-----------|------|---------|------|-----------|------|------------|------|-----------|------|--------------------|------|------------|
| 1989            | 52,070,066 | 88   | 2,769,875 | 5    | 57,195  | <1   | 1,771,409 | 3    | 2,550,624  | 4    | 213,371   | <1   | 27,663             | <1   | 59,460,203 |
| 1990            | 27,915,150 | 86   | 1,168,061 | 4    | 30,840  | <1   | 771,665   | 2    | 1,546,186  | 5    | 880,750   | 3    | 29,350             | <1   | 32,342,002 |
| 1991            | 58,592,358 | 95   | 820,409   | 1    | 3,052   | <1   | 427,326   | 1    | 933,309    | 2    | 1,112,888 | 2    | 36,997             | <1   | 61,926,339 |
| 1992            | 29,769,079 | 85   | 1,408,331 | 4    | 18,526  | <1   | 673,795   | 2    | 954,756    | 3    | 2,111,411 | 6    | 27,400             | <1   | 34,963,298 |
| 1993            | 53,414,515 | 93   | 1,087,670 | 2    | 9,909   | <1   | 902,766   | 2    | 1,521,934  | 3    | 332,763   | 1    | 29,793             | <1   | 57,299,350 |
| 1994            | 51,280,083 | 90   | 1,030,607 | 2    | 12,324  | <1   | 942,783   | 2    | 498,031    | 1    | 3,459,436 | 6    | 51,613             | <1   | 57,274,877 |
| 1995            | 43,498,508 | 91   | 1,337,764 | 3    | 54,041  | <1   | 714,312   | 1    | 1,925,156  | 4    | 411,701   | 1    | 24,024             | <1   | 47,965,506 |
| 1996            | 61,649,487 | 95   | 615,311   | 1    | 31,295  | <1   | 812,899   | 1    | 867,799    | 1    | 609,316   | 1    | 43,607             | <1   | 64,629,714 |
| 1997            | 24,782,485 | 86   | 1,384,200 | 5    | 93,658  | <1   | 545,308   | 2    | 410,054    | 1    | 1,695,171 | 6    | 64,348             | <1   | 28,975,224 |
| 1998            | 38,436,679 | 90   | 1,489,395 | 4    | 86,066  | <1   | 261,104   | 1    | 799,296    | 2    | 1,411,511 | 3    | 51,351             | <1   | 42,535,402 |
| 1999            | 71,961,636 | 92   | 1,274,672 | 2    | 29,554  | <1   | 540,859   | 1    | 896,414    | 1    | 3,053,220 | 4    | 91,929             | <1   | 77,848,284 |
| 2000            | 18,156,691 | 89   | 679,452   | 3    | 64,349  | <1   | 187,364   | 1    | 918,280    | 5    | 267,913   | 1    | 39,377             | <1   | 20,313,426 |
| 2001            | 61,951,322 | 92   | 1,568,859 | 2    | 32,230  | <1   | 258,943   | <1   | 1,995,215  | 3    | 1,189,294 | 2    | 60,128             | <1   | 67,055,991 |
| 2002            | 42,137,936 | 93   | 802,290   | 2    | 15,590  | <1   | 86,399    | <1   | 1,363,274  | 3    | 853,059   | 2    | 72,459             | <1   | 45,331,007 |
| 2003            | 49,894,749 | 95   | 1,354,839 | 3    | 48,418  | <1   | 159,643   | <1   | 569,512    | 1    | 420,141   | 1    | 68,330             | <1   | 52,515,632 |
| 2004            | 42,596,809 | 94   | 944,447   | 2    | 23,207  | <1   | 57,199    | <1   | 715,774    | 2    | 933,287   | 2    | 62,289             | <1   | 45,333,012 |
| 2005            | 55,746,479 | 94   | 1,530,243 | 3    | 60,436  | <1   | 109,584   | <1   | 598,105    | 1    | 1,004,250 | 2    | 133,145            | <1   | 59,182,242 |
| 2006            | 10,117,941 | 87   | 744,048   | 6    | 88,864  | 1    | 60,323    | 1    | 263,420    | 2    | 377,353   | 3    | 43,462             | <1   | 11,695,411 |
| 2007            | 42,078,209 | 94   | 984,250   | 2    | 87,997  | <1   | 104,325   | <1   | 846,271    | 2    | 606,443   | 1    | 177,245            | <1   | 44,884,740 |
| 2008            | 14,297,381 | 90   | 560,612   | 4    | 65,227  | <1   | 28,123    | <1   | 926,190    | 6    | 83,099    | 1    | 6,418              | <1   | 15,967,050 |
| 2009            | 34,946,847 | 92   | 566,734   | 1    | 76,956  | <1   | 75,722    | <1   | 1,725,651  | 5    | 682,266   | 2    | 27,254             | <1   | 38,101,430 |
| 2010            | 20,630,072 | 85   | 1,337,098 | 6    | 160,470 | 1    | 87,625    | <1   | 1,327,540  | 5    | 713,810   | 3    | 46,712             | <1   | 24,303,327 |
| 2011            | 55,251,280 | 94   | 1,641,100 | 3    | 205,261 | <1   | 496,220   | 1    | 740,510    | 1    | 698,067   | 1    | 55,849             | <1   | 59,088,287 |
| 2012            | 19,172,555 | 90   | 938,892   | 4    | 27,343  | <1   | 168,539   | 1    | 807,922    | 4    | 153,194   | 1    | 35,945             | <1   | 21,304,390 |
| 2013            | 88,764,579 | 94   | 1,664,045 | 2    | 67,344  | <1   | 684,532   | 1    | 2,578,174  | 3    | 968,118   | 1    | 60,148             | <1   | 94,786,940 |
| 2014            | 33,471,883 | 90   | 1,417,432 | 4    | 20,733  | <1   | 75,278    | <1   | 1,961,842  | 5    | 236,214   | 1    | 10,364             | <1   | 37,193,746 |
| 2015            | 32,224,601 | 92   | 1,374,363 | 4    | 68,785  | <1   | 259,411   | 1    | 776,981    | 2    | 333,233   | 1    | 124,052            | <1   | 35,161,426 |
| 2016            | 15,388,943 | 84   | 1,152,890 | 6    | 21,778  | <1   | 53,359    | <1   | 1,418,243  | 8    | 330,519   | 2    | 30,265             | <1   | 18,395,997 |
| 2017            | 32,061,417 | 92   | 1,019,501 | 3    | 91,933  | <1   | 54,469    | <1   | 879,193    | 3    | 641,437   | 2    | 78,591             | <1   | 34,826,541 |
| 2018            | 6,850,978  | 85   | 556,370   | 7    | 29,072  | <1   | 53,584    | 1    | 296,378    | 4    | 293,654   | 4    | 16,742             | <1   | 8,096,778  |
| 2019            | 18,611,309 | 88   | 872,380   | 4    | 33,048  | <1   | 70,412    | <1   | 1,239,672  | 6    | 313,301   | 1    | 25,591             | <1   | 21,165,713 |
| <b>Averages</b> |            |      |           |      |         |      |           |      |            |      |           |      |                    |      |            |
| 1962–2018       | 27,922,624 | 89   | 1,003,589 | 5    | 50,867  | <1   | 337,787   | 2    | 889,331    | 3    | —         | —    | —                  | —    | 30,714,448 |
| 2009–2018       | 33,876,316 | 90   | 1,166,843 | 4    | 76,968  | <1   | 200,874   | 1    | 1,251,243  | 4    | 505,051   | 2    | 48,592             | <1   | 37,125,886 |
| <b>Harvest</b>  |            |      |           |      |         |      |           |      |            |      |           |      |                    |      |            |
| Max & year      | 88,764,579 | 2013 | 2,769,875 | 1989 | 205,261 | 2011 | 1,771,409 | 1989 | 2,578,174  | 2013 | 3,459,436 | 1994 | 177,245            | 2007 | 94,786,940 |
| Min & year      | 2,807,759  | 1967 | 205,683   | 1967 | 1,405   | 1966 | 28,123    | 2008 | 6,949      | 1967 | 7,346     | 1982 | 4,002              | 1982 | 3,109,343  |

<sup>a</sup> Includes confiscations, commercial test fisheries, and sportfish salmon derbies where fish were sold.

Table 9.—Southeast Alaska annual commercial total chum salmon harvest by harvest type, in numbers and percent, 1989 to 2019.

| Year            | Seine     | %    | Driftnet  | %    | Setnet | %    | Troll     | %    | Annette I. | %    | Hatchery  | %    | Misc <sup>a</sup> | %    | Total      |
|-----------------|-----------|------|-----------|------|--------|------|-----------|------|------------|------|-----------|------|-------------------|------|------------|
| 1989            | 1,079,555 | 55   | 542,846   | 28   | 16,259 | 1    | 68,990    | 4    | 65,415     | 3    | 192,527   | 10   | 3,302             | <1   | 1,968,894  |
| 1990            | 1,062,522 | 48   | 616,226   | 28   | 5,825  | <1   | 62,818    | 3    | 84,519     | 4    | 381,645   | 17   | 4,340             | <1   | 2,217,895  |
| 1991            | 2,125,308 | 64   | 707,277   | 21   | 2,984  | <1   | 28,438    | 1    | 82,102     | 2    | 376,313   | 11   | 13,621            | <1   | 3,336,043  |
| 1992            | 3,193,433 | 65   | 845,176   | 17   | 7,604  | <1   | 85,029    | 2    | 102,290    | 2    | 695,451   | 14   | 7,532             | <1   | 4,936,515  |
| 1993            | 4,606,463 | 58   | 1,401,186 | 18   | 4,065  | <1   | 525,158   | 7    | 75,489     | 1    | 1,256,796 | 16   | 10,711            | <1   | 7,879,868  |
| 1994            | 6,376,472 | 61   | 1,823,497 | 18   | 4,229  | <1   | 330,377   | 3    | 136,341    | 1    | 1,717,481 | 17   | 14,688            | <1   | 10,403,085 |
| 1995            | 6,600,529 | 59   | 2,478,672 | 22   | 2,585  | <1   | 277,453   | 2    | 133,380    | 1    | 1,707,559 | 15   | 25,515            | <1   | 11,225,693 |
| 1996            | 8,918,577 | 56   | 2,033,650 | 13   | 1,803  | <1   | 406,256   | 3    | 126,294    | 1    | 4,536,244 | 28   | 20,506            | <1   | 16,043,330 |
| 1997            | 5,863,603 | 50   | 1,689,474 | 14   | 808    | <1   | 312,042   | 3    | 166,573    | 1    | 3,736,406 | 32   | 20,233            | <1   | 11,789,139 |
| 1998            | 9,406,979 | 60   | 1,923,764 | 12   | 1,351  | <1   | 117,642   | 1    | 214,681    | 1    | 4,004,257 | 26   | 26,611            | <1   | 15,695,285 |
| 1999            | 8,944,184 | 60   | 2,166,260 | 15   | 928    | <1   | 74,704    | 1    | 100,331    | 1    | 3,611,886 | 24   | 32,639            | <1   | 14,930,932 |
| 2000            | 8,306,257 | 52   | 2,561,607 | 16   | 1,185  | <1   | 478,144   | 3    | 164,969    | 1    | 4,353,396 | 27   | 45,351            | <1   | 15,910,909 |
| 2001            | 4,436,178 | 51   | 1,576,881 | 18   | 406    | <1   | 467,837   | 5    | 126,455    | 1    | 2,125,390 | 24   | 21,269            | <1   | 8,754,416  |
| 2002            | 3,110,330 | 42   | 1,415,849 | 19   | 204    | <1   | 117,672   | 2    | 83,438     | 1    | 2,710,351 | 36   | 17,163            | <1   | 7,455,007  |
| 2003            | 4,336,128 | 39   | 1,528,198 | 14   | 542    | <1   | 286,410   | 3    | 56,049     | 1    | 4,889,605 | 44   | 18,153            | <1   | 11,115,085 |
| 2004            | 5,684,447 | 50   | 1,835,679 | 16   | 1,555  | <1   | 171,307   | 2    | 97,664     | 1    | 3,550,119 | 31   | 30,852            | <1   | 11,371,623 |
| 2005            | 2,817,026 | 44   | 1,511,570 | 24   | 525    | <1   | 174,596   | 3    | 58,487     | 1    | 1,858,830 | 29   | 6,496             | <1   | 6,427,530  |
| 2006            | 5,614,232 | 41   | 3,126,853 | 23   | 1,225  | <1   | 153,545   | 1    | 160,182    | 1    | 4,473,325 | 33   | 25,918            | <1   | 13,555,280 |
| 2007            | 3,043,839 | 32   | 2,485,605 | 26   | 2,782  | <1   | 191,680   | 2    | 190,485    | 2    | 3,484,759 | 37   | 18,657            | <1   | 9,417,807  |
| 2008            | 3,215,231 | 36   | 2,592,212 | 29   | 546    | <1   | 60,829    | 1    | 157,975    | 2    | 3,017,712 | 33   | 8,583             | <1   | 9,053,088  |
| 2009            | 3,502,998 | 36   | 2,729,966 | 28   | 871    | <1   | 342,865   | 4    | 158,637    | 2    | 2,912,641 | 30   | 12,385            | <1   | 9,660,363  |
| 2010            | 3,233,835 | 34   | 2,220,619 | 23   | 1,239  | <1   | 394,696   | 4    | 314,418    | 3    | 3,299,035 | 35   | 11,007            | <1   | 9,474,849  |
| 2011            | 2,701,643 | 25   | 2,801,644 | 26   | 900    | <1   | 702,901   | 7    | 430,585    | 4    | 4,087,184 | 38   | 5,283             | <1   | 10,730,140 |
| 2012            | 4,826,746 | 39   | 3,517,702 | 28   | 2,162  | <1   | 476,520   | 4    | 468,304    | 4    | 3,065,001 | 25   | 18,418            | <1   | 12,374,853 |
| 2013            | 5,797,941 | 46   | 3,422,488 | 27   | 1,428  | <1   | 1,054,265 | 8    | 182,489    | 1    | 2,099,940 | 17   | 14,481            | <1   | 12,573,032 |
| 2014            | 2,384,335 | 36   | 2,381,367 | 36   | 621    | <1   | 199,707   | 3    | 129,478    | 2    | 1,575,630 | 24   | 8,509             | <1   | 6,679,647  |
| 2015            | 4,827,047 | 42   | 3,351,918 | 29   | 660    | <1   | 424,231   | 4    | 704,131    | 6    | 2,306,954 | 20   | 12,393            | <1   | 11,627,334 |
| 2016            | 3,108,581 | 34   | 2,679,235 | 29   | 554    | <1   | 164,944   | 2    | 396,058    | 4    | 2,731,469 | 30   | 36,425            | <1   | 9,117,266  |
| 2017            | 4,044,328 | 35   | 3,611,890 | 32   | 912    | <1   | 403,488   | 4    | 249,088    | 2    | 3,094,798 | 27   | 25,768            | <1   | 11,430,272 |
| 2018            | 4,985,011 | 43   | 2,526,020 | 22   | 132    | <1   | 530,597   | 5    | 211,148    | 2    | 3,215,022 | 28   | 16,442            | <1   | 11,484,372 |
| 2019            | 4,380,820 | 47   | 2,327,426 | 25   | 395    | <1   | 269,575   | 3    | 97,687     | 1    | 2,246,365 | 24   | 47,502            | 1    | 9,369,770  |
| <b>Averages</b> |           |      |           |      |        |      |           |      |            |      |           |      |                   |      |            |
| 1962–2018       | 3,035,232 | 56   | 1,362,982 | 25   | 6,170  | <1   | 166,944   | 2    | 112,706    | 2    | —         | —    | —                 | —    | 6,149,027  |
| 2009–2018       | 3,941,247 | 37   | 2,924,285 | 28   | 948    | <1   | 469,421   | 5    | 324,434    | 3    | 2,838,767 | 27   | 16,111            | <1   | 10,515,213 |
| <b>Harvest</b>  |           |      |           |      |        |      |           |      |            |      |           |      |                   |      |            |
| Max & year      | 9,406,979 | 1998 | 3,611,890 | 2017 | 32,230 | 1984 | 1,054,265 | 2013 | 704,131    | 2015 | 4,889,605 | 2003 | 47,502            | 2019 | 16,043,330 |
| Min & year      | 332,514   | 1969 | 208,918   | 1969 | 132    | 2018 | 1,702     | 1969 | 226        | 1973 | 1         | 1981 | 309               | 1983 | 560,595    |

<sup>a</sup> Includes confiscations, commercial test fisheries, and sportfish salmon derbies where fish were sold.



Table 10.—Southeast Alaska estimated exvessel value, harvest, average weight, and price paid per pound by gear and species, 2019.

| Fishery                                                       | Chinook      | Jacks  | Sockeye      | Coho         | Pink         | Chum         | Total         |
|---------------------------------------------------------------|--------------|--------|--------------|--------------|--------------|--------------|---------------|
| <b>Exvessel Value in Dollars<sup>a</sup></b>                  |              |        |              |              |              |              |               |
| Purse Seine <sup>b</sup>                                      | \$1,032,931  | \$649  | \$4,712,769  | \$1,340,182  | \$20,100,214 | \$20,116,725 | \$47,303,471  |
| Drift Gillnet <sup>b</sup>                                    | \$958,124    | —      | \$4,608,489  | \$2,037,194  | \$1,062,559  | \$10,180,161 | \$18,846,527  |
| Setnet                                                        | \$10,198     | —      | \$452,840    | \$1,123,288  | \$34,700     | \$939        | \$1,621,966   |
| Troll                                                         | \$8,971,608  | —      | \$56,340     | \$12,895,683 | \$93,649     | \$1,303,670  | \$23,320,950  |
| Annette Island <sup>c</sup>                                   | \$115,440    | —      | \$152,657    | \$167,076    | \$1,450,416  | \$580,261    | \$2,465,850   |
| Hatchery Cost Recovery                                        | \$667,056    | \$102  | \$759,178    | \$1,721,106  | \$426,089    | \$8,410,391  | \$11,983,922  |
| Miscellaneous <sup>d</sup>                                    | \$25,342     | —      | \$28,389     | \$24,812     | \$29,174     | \$182,788    | \$290,505     |
| Total Exvessel Value                                          | \$11,780,700 | \$751  | \$10,770,663 | \$19,309,340 | \$23,196,802 | \$40,774,934 | \$105,833,190 |
| <b>Number Harvested</b>                                       |              |        |              |              |              |              |               |
| Purse Seine <sup>b</sup>                                      | 21,174       | 1,224  | 445,273      | 246,357      | 18,611,309   | 4,380,820    | 23,706,157    |
| Drift Gillnet <sup>b</sup>                                    | 20,846       | —      | 395,307      | 196,356      | 872,380      | 2,327,426    | 3,812,315     |
| Setnet                                                        | 315          | —      | 54,810       | 100,473      | 33,048       | 395          | 189,041       |
| Troll                                                         | 108,623      | —      | 6,260        | 973,406      | 70,413       | 269,576      | 1,428,278     |
| Annette Island <sup>c</sup>                                   | 1,429        | —      | 10,142       | 17,624       | 1,239,672    | 97,687       | 1,366,554     |
| Hatchery Cost Recovery                                        | 31,326       | 410    | 97,181       | 181,360      | 313,301      | 2,246,365    | 2,869,943     |
| Miscellaneous <sup>d</sup>                                    | 383          | —      | 2,767        | 2,188        | 25,591       | 47,502       | 78,431        |
| Total Harvested                                               | 184,096      | 1,634  | 1,011,740    | 1,717,764    | 21,165,714   | 9,369,771    | 33,450,719    |
| <b>Average Weight in Pounds<sup>e</sup></b>                   |              |        |              |              |              |              |               |
| Purse Seine                                                   | 16.1         | 5.3    | 5.6          | 6.4          | 3.6          | 8.2          |               |
| Drift Gillnet                                                 | 13.4         | —      | 5.8          | 8.3          | 4.2          | 8.1          |               |
| Setnet                                                        | 11.4         | —      | 5.4          | 8.6          | 4.2          | 7.2          |               |
| Troll                                                         | 12.2         | —      | 4.5          | 6.4          | 3.8          | 7.8          |               |
| Annette Island <sup>c</sup>                                   | 13.2         | —      | 5.3          | 7.9          | 3.9          | 11           |               |
| Hatchery Cost Recovery                                        | 7.8          | 8.3    | 4.2          | 7.3          | 3.4          | 7.2          |               |
| Miscellaneous                                                 | 12.7         | —      | 5.4          | 8.4          | 3.8          | 7.4          |               |
| <b>Estimated Average Exvessel Price per Pound<sup>f</sup></b> |              |        |              |              |              |              |               |
| Purse Seine                                                   | \$3.03       | \$0.10 | \$1.89       | \$0.85       | \$0.30       | \$0.56       |               |
| Drift Gillnet                                                 | \$3.43       | —      | \$2.01       | \$1.25       | \$0.29       | \$0.54       |               |
| Setnet                                                        | \$2.84       | —      | \$1.53       | \$1.30       | \$0.25       | \$0.33       |               |
| Troll                                                         | \$6.77       | —      | \$2.00       | \$2.07       | \$0.35       | \$0.62       |               |
| Annette Island <sup>c</sup>                                   | \$6.12       | —      | \$2.84       | \$1.20       | \$0.30       | \$0.54       |               |
| Hatchery Cost Recovery                                        | \$2.73       | \$0.03 | \$1.86       | \$1.30       | \$0.40       | \$0.52       |               |
| Miscellaneous                                                 | \$5.21       | —      | \$1.90       | \$1.35       | \$0.30       | \$0.52       |               |

<sup>a</sup> Exvessel Value calculation = (Number caught) x (average weight) x (average exvessel price).

<sup>b</sup> In addition to adults, jack Chinook salmon <28 inches can be sold in the purse seine fishery, and salmon <28 inches can be sold in the drift gillnet fishery.

<sup>c</sup> Annette Island Reserve includes purse seine, drift gillnet, and hand and power troll gear types.

<sup>d</sup> Includes confiscations, commercial test fisheries, and sport derbies where fish were sold.

<sup>e</sup> Average weight = (total pounds for all fish tickets (where pounds>0))/(total number of fish for all tickets (where number>0)).

<sup>f</sup> Average price = (total value for all fish tickets (where value>0))/(total pounds for all fish tickets (where pounds>0)).

Table 11.—Southeast Alaska salmon exvessel value estimates from CFEC (1976–2018) and fish ticket data (2019), by gear group, 1976–2019.

| Year              | Purse Seine   | Drift Gillnet | Set Gillnet | Troll        | Total         |
|-------------------|---------------|---------------|-------------|--------------|---------------|
| 1976              | \$11,064,253  | \$8,605,228   | \$1,266,918 | \$9,960,934  | \$30,897,333  |
| 1977              | \$24,528,760  | \$11,849,486  | \$2,165,108 | \$15,355,560 | \$53,898,914  |
| 1978              | \$27,664,646  | \$9,750,459   | \$2,588,725 | \$23,142,387 | \$63,146,217  |
| 1979              | \$19,632,769  | \$11,434,552  | \$3,022,174 | \$27,876,636 | \$61,966,131  |
| 1980              | \$29,487,986  | \$9,388,349   | \$2,272,641 | \$16,404,446 | \$57,553,422  |
| 1981              | \$36,786,344  | \$9,393,150   | \$2,631,179 | \$19,708,310 | \$68,518,983  |
| 1982              | \$28,147,770  | \$10,423,447  | \$2,220,866 | \$24,414,056 | \$65,206,139  |
| 1983              | \$33,292,294  | \$7,602,633   | \$1,200,401 | \$15,975,186 | \$58,070,514  |
| 1984              | \$35,000,066  | \$13,498,190  | \$2,305,102 | \$26,602,196 | \$77,405,554  |
| 1985              | \$52,018,934  | \$17,083,901  | \$2,777,108 | \$25,009,669 | \$96,889,612  |
| 1986              | \$53,893,815  | \$14,585,793  | \$2,044,606 | \$28,074,767 | \$98,598,981  |
| 1987              | \$22,739,529  | \$19,227,191  | \$4,587,640 | \$25,368,212 | \$71,922,572  |
| 1988              | \$53,314,374  | \$32,342,986  | \$8,703,413 | \$29,827,740 | \$124,188,513 |
| 1989              | \$91,241,060  | \$20,578,737  | \$4,217,986 | \$23,526,234 | \$139,564,017 |
| 1990              | \$44,821,503  | \$16,439,366  | \$4,560,978 | \$31,101,694 | \$96,923,541  |
| 1991              | \$36,071,105  | \$12,037,061  | \$2,330,261 | \$25,162,099 | \$75,600,526  |
| 1992              | \$51,054,882  | \$20,850,361  | \$5,320,994 | \$29,351,980 | \$106,578,217 |
| 1993              | \$52,894,318  | \$15,904,271  | \$3,000,832 | \$26,642,558 | \$98,441,979  |
| 1994              | \$61,164,567  | \$17,207,769  | \$3,653,893 | \$38,943,302 | \$120,969,531 |
| 1995              | \$55,806,812  | \$16,899,040  | \$2,479,193 | \$16,673,792 | \$91,858,837  |
| 1996              | \$42,813,455  | \$14,430,995  | \$2,406,670 | \$16,394,667 | \$76,045,787  |
| 1997              | \$40,813,997  | \$11,143,699  | \$3,216,870 | \$18,853,651 | \$74,028,217  |
| 1998              | \$45,509,746  | \$11,345,286  | \$1,416,481 | \$14,974,147 | \$73,245,660  |
| 1999              | \$56,402,089  | \$11,489,118  | \$2,324,296 | \$20,442,587 | \$90,658,090  |
| 2000              | \$38,060,764  | \$10,940,909  | \$1,491,218 | \$14,786,178 | \$65,279,069  |
| 2001              | \$48,742,800  | \$11,316,836  | \$1,134,695 | \$17,191,517 | \$78,385,848  |
| 2002              | \$20,244,170  | \$8,132,853   | \$741,392   | \$13,164,474 | \$42,282,889  |
| 2003              | \$26,705,739  | \$8,903,210   | \$1,140,130 | \$14,812,555 | \$51,561,634  |
| 2004              | \$31,672,452  | \$11,778,867  | \$1,629,266 | \$29,016,910 | \$74,097,495  |
| 2005              | \$36,073,649  | \$12,753,519  | \$926,824   | \$26,770,816 | \$76,524,808  |
| 2006              | \$27,536,028  | \$20,007,955  | \$1,724,122 | \$34,645,633 | \$83,913,738  |
| 2007              | \$49,646,050  | \$15,081,267  | \$2,516,647 | \$30,985,116 | \$98,229,080  |
| 2008              | \$40,986,039  | \$24,209,429  | \$1,657,225 | \$36,566,992 | \$103,419,685 |
| 2009              | \$48,417,377  | \$18,578,453  | \$1,681,645 | \$22,942,077 | \$91,619,552  |
| 2010              | \$56,238,100  | \$26,618,998  | \$2,157,567 | \$31,945,182 | \$116,959,847 |
| 2011              | \$122,181,438 | \$31,126,506  | \$2,311,802 | \$32,407,478 | \$188,028,596 |
| 2012              | \$73,082,279  | \$37,475,066  | \$1,536,822 | \$29,851,966 | \$141,949,908 |
| 2013              | \$154,063,851 | \$29,456,023  | \$3,018,685 | \$41,311,596 | \$227,851,157 |
| 2014              | \$58,359,164  | \$28,377,429  | \$2,117,425 | \$46,553,102 | \$135,409,768 |
| 2015              | \$55,228,561  | \$20,621,188  | \$1,324,263 | \$25,790,377 | \$102,967,142 |
| 2016              | \$41,671,425  | \$22,718,531  | \$1,930,288 | \$34,529,503 | \$92,837,746  |
| 2017              | \$75,696,745  | \$30,748,441  | \$2,549,101 | \$36,002,993 | \$135,599,151 |
| 2018              | \$51,377,047  | \$27,969,355  | \$1,106,015 | \$28,402,375 | \$108,854,792 |
| 2019 <sup>a</sup> | \$47,780,323  | \$18,896,950  | \$721,842   | \$20,607,629 | \$88,006,745  |
| <b>Average</b>    |               |               |             |              |               |
| 2009–2018         | \$73,631,599  | \$27,368,999  | \$1,973,361 | \$32,973,665 | \$134,207,766 |

<sup>a</sup> Exvessel value estimates for 2019 are preliminary.

Table 12.—Southeast Alaska reported subsistence and personal use salmon harvest, by species, and number of permits issued, from 1985 to 2019.

| Year <sup>a</sup> | Issued | Fished <sup>b</sup> | Number of Salmon Harvested |         |       |       |       | Total  |
|-------------------|--------|---------------------|----------------------------|---------|-------|-------|-------|--------|
|                   |        |                     | Chinook                    | Sockeye | Coho  | Pink  | Chum  |        |
| 1985              | 1,395  | 1,244               | 19                         | 19,391  | 352   | 2,130 | 2,701 | 24,593 |
| 1986              | 1,529  | 1,350               | 29                         | 21,934  | 277   | 971   | 2,740 | 25,951 |
| 1987              | 1,500  | 1,318               | 34                         | 25,395  | 117   | 1,491 | 3,775 | 30,812 |
| 1988              | 1,583  | 887                 | 94                         | 17,907  | 97    | 870   | 2,525 | 21,493 |
| 1989              | 2,158  | 1,269               | 279                        | 27,268  | 906   | 3,357 | 1,964 | 33,774 |
| 1990              | 2,660  | 1,430               | 519                        | 34,963  | 1,546 | 3,463 | 3,388 | 43,879 |
| 1991              | 2,638  | 1,477               | 258                        | 37,381  | 773   | 1,734 | 2,894 | 43,040 |
| 1992              | 3,198  | 951                 | 614                        | 53,099  | 4,939 | 2,942 | 3,201 | 64,795 |
| 1993              | 3,559  | 1,530               | 537                        | 56,172  | 3,515 | 2,153 | 2,583 | 64,960 |
| 1994              | 3,769  | 1,277               | 800                        | 57,077  | 3,607 | 3,639 | 4,211 | 69,334 |
| 1995              | 3,412  | 1,082               | 1,201                      | 45,062  | 3,700 | 3,215 | 3,361 | 56,539 |
| 1996              | 3,807  | 1,755               | 1,078                      | 54,956  | 2,482 | 2,437 | 4,143 | 65,096 |
| 1997              | 3,640  | 1,901               | 739                        | 48,761  | 2,314 | 3,354 | 3,617 | 58,785 |
| 1998              | 4,061  | 1,989               | 1,051                      | 53,660  | 2,843 | 3,361 | 5,042 | 65,957 |
| 1999              | 4,297  | 2,221               | 1,310                      | 49,509  | 1,748 | 2,843 | 4,356 | 59,766 |
| 2000              | 3,339  | 1,819               | 1,255                      | 46,036  | 1,908 | 2,204 | 2,981 | 54,384 |
| 2001              | 3,385  | 1,621               | 1,266                      | 48,307  | 2,697 | 3,762 | 3,308 | 59,340 |
| 2002              | 3,256  | 1,524               | 1,823                      | 48,585  | 3,081 | 2,807 | 1,846 | 58,142 |
| 2003              | 3,842  | 1,897               | 1,346                      | 55,994  | 2,503 | 3,198 | 3,206 | 66,247 |
| 2004              | 3,911  | 2,043               | 1,288                      | 54,057  | 2,109 | 2,833 | 2,748 | 63,035 |
| 2005              | 3,056  | 1,455               | 741                        | 34,077  | 1,939 | 4,439 | 1,636 | 42,832 |
| 2006              | 3,675  | 1,294               | 1,238                      | 46,454  | 1,620 | 3,050 | 1,524 | 53,886 |
| 2007              | 3,140  | 1,421               | 810                        | 36,853  | 1,166 | 2,413 | 628   | 41,870 |
| 2008              | 3,093  | 1,413               | 882                        | 36,383  | 3,188 | 1,722 | 1,325 | 43,500 |
| 2009              | 3,639  | 1,823               | 976                        | 43,979  | 3,160 | 3,093 | 1,716 | 52,924 |
| 2010              | 3,476  | 1,792               | 1,288                      | 42,250  | 3,014 | 3,197 | 801   | 50,550 |
| 2011              | 3,166  | 1,556               | 766                        | 36,098  | 2,605 | 5,070 | 1,059 | 45,598 |
| 2012              | 3,404  | 1,718               | 690                        | 43,867  | 2,699 | 2,406 | 1,042 | 50,704 |
| 2013              | 3,605  | 1,795               | 764                        | 42,513  | 3,124 | 3,094 | 1,215 | 50,710 |
| 2014              | 3,310  | 1,639               | 769                        | 38,019  | 2,747 | 2,041 | 805   | 44,381 |
| 2015              | 2,944  | 1,475               | 393                        | 31,084  | 2,552 | 4,267 | 968   | 39,264 |
| 2016              | 3,199  | 1,592               | 368                        | 38,365  | 2,828 | 3,026 | 1,319 | 45,906 |
| 2017              | 2,883  | 1,469               | 406                        | 31,968  | 1,934 | 4,064 | 840   | 39,212 |
| 2018              | 3,372  | 1,667               | 260                        | 43,524  | 3,242 | 1,446 | 1,119 | 49,591 |
| 2019              | 2,858  | 1,479               | 255                        | 35,090  | 2160  | 1993  | 865   | 40,363 |
| <b>Averages</b>   |        |                     |                            |         |       |       |       |        |
| 1985–2018         | 3,144  | 1,550               | 762                        | 41,204  | 2,274 | 2,826 | 2,370 | 49,437 |
| 2009–2018         | 3,262  | 1,634               | 634                        | 38,632  | 2,749 | 3,179 | 1,019 | 46,213 |

Note: Data presented in this table are for Southeast Alaska only and exclude the Yakutat area.

<sup>a</sup> Prior to 1985, the numbers of permits issued and returned were not recorded.

<sup>b</sup> Number of permits fished is estimated from permit data.

<sup>c</sup> Prior to 1996, the numbers of permits issued and returned are not as reliable due to data entry omissions (if a permit had zero harvest it was not recorded as a returned permit).

<sup>d</sup> Data for 2019 are preliminary as not all permits have been returned. Permits will continue to be returned and entered through next season.

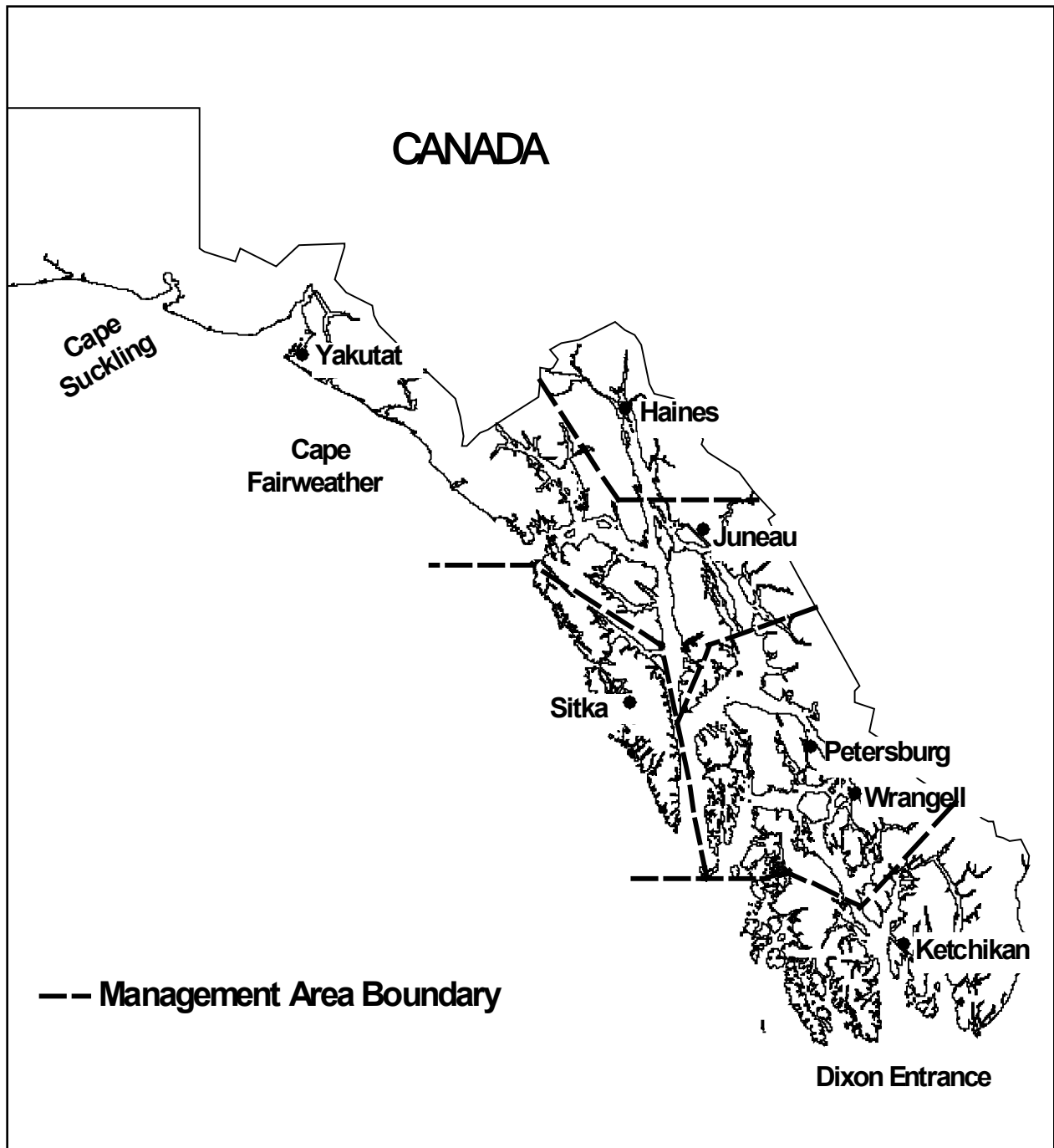


Figure 1.—Southeast Alaska consists of Alaska waters between Cape Suckling on the north and Dixon Entrance on the south. Troll fisheries are managed regionally, and drift gillnet, setnet, and purse seine fisheries are managed by area offices in Ketchikan, Petersburg/Wrangell, Sitka, Juneau, Haines, and Yakutat.

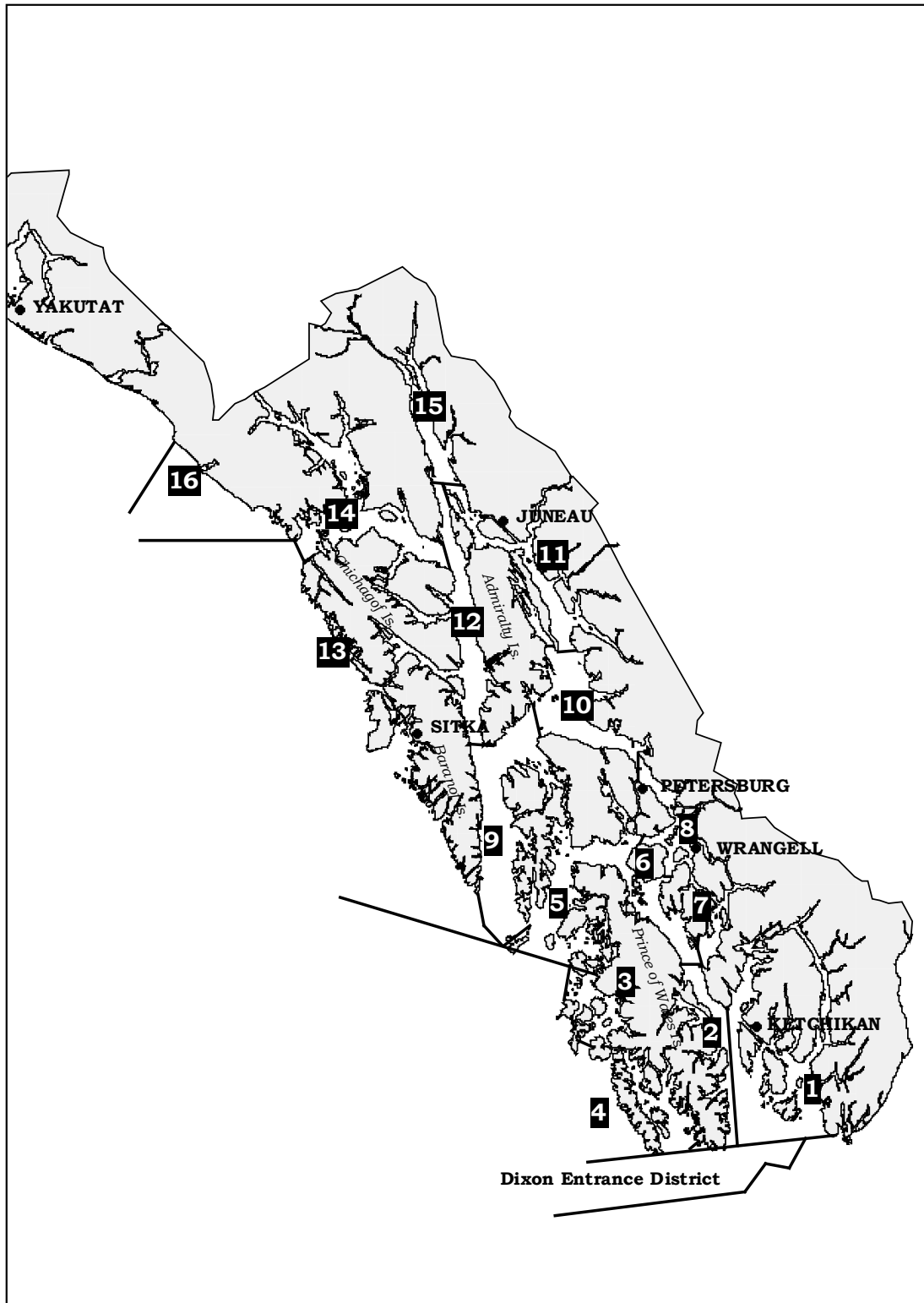


Figure 2.—Boundaries for regulatory Districts 1 to 16, as well as Dixon Entrance District, within Southeast Alaska.



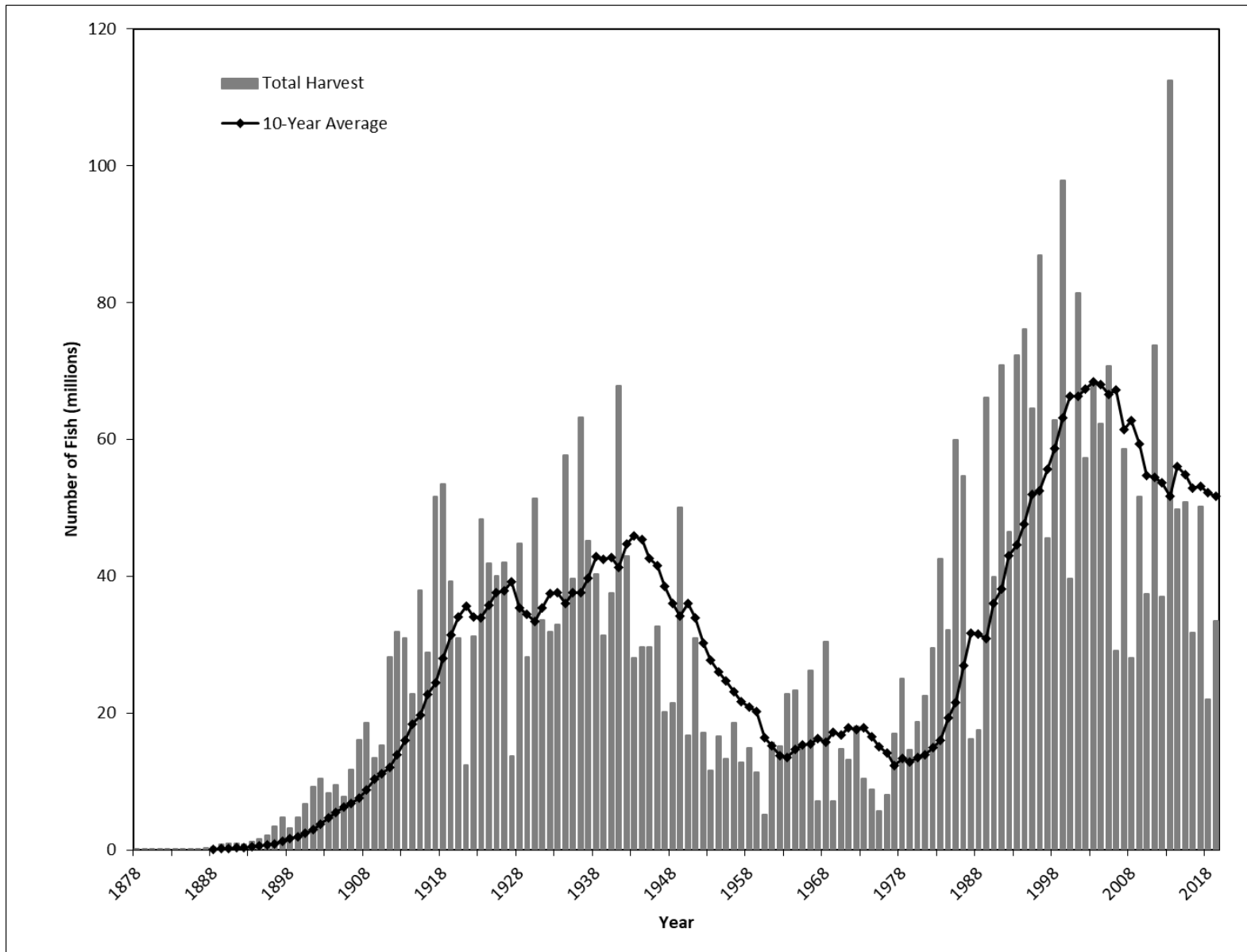


Figure 4.—Southeast Alaska historical salmon harvest and recent 10-year average harvest, from 1878 to 2019.

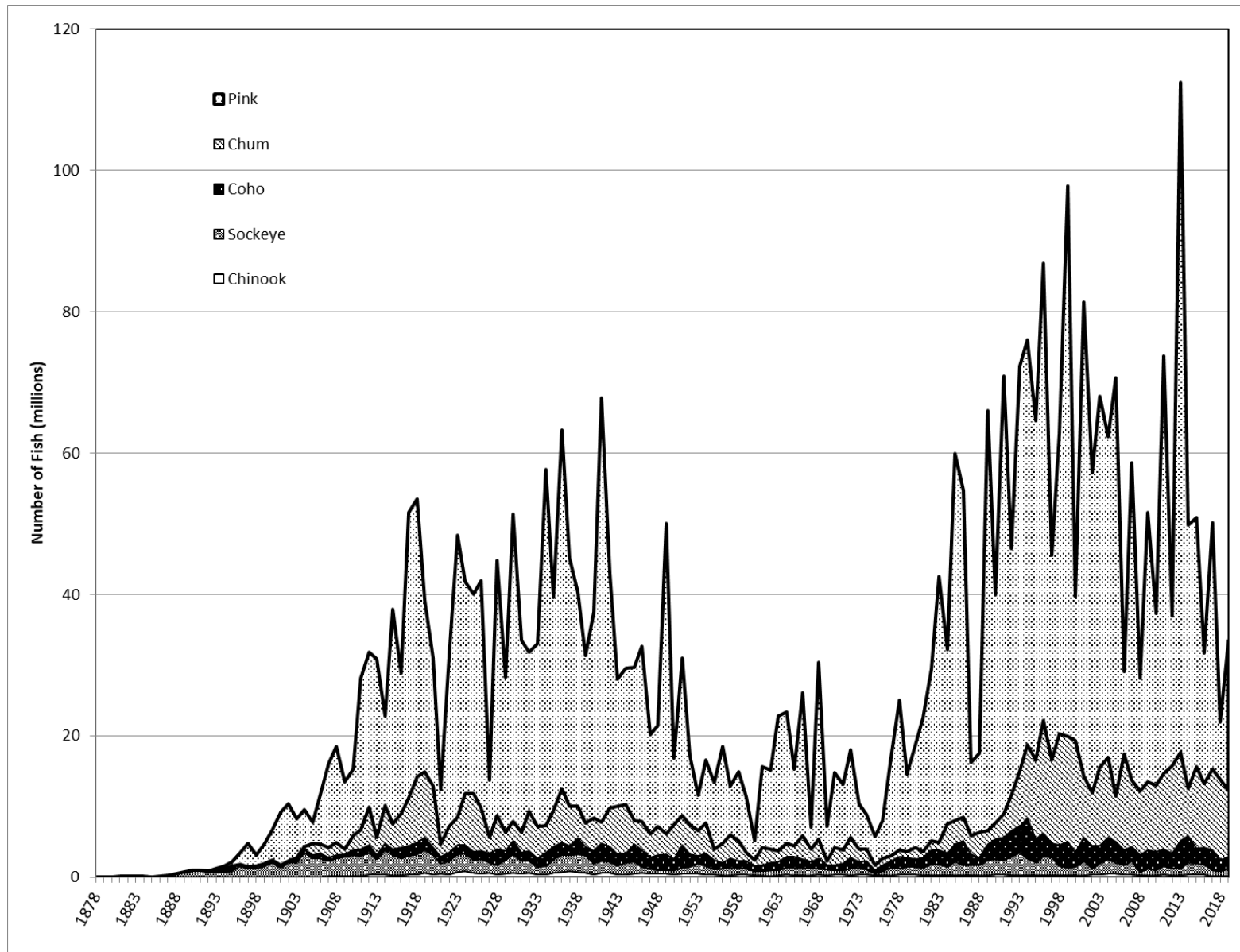


Figure 5.—Southeast Alaska historical salmon harvest by species and season, 1878 to 2019.



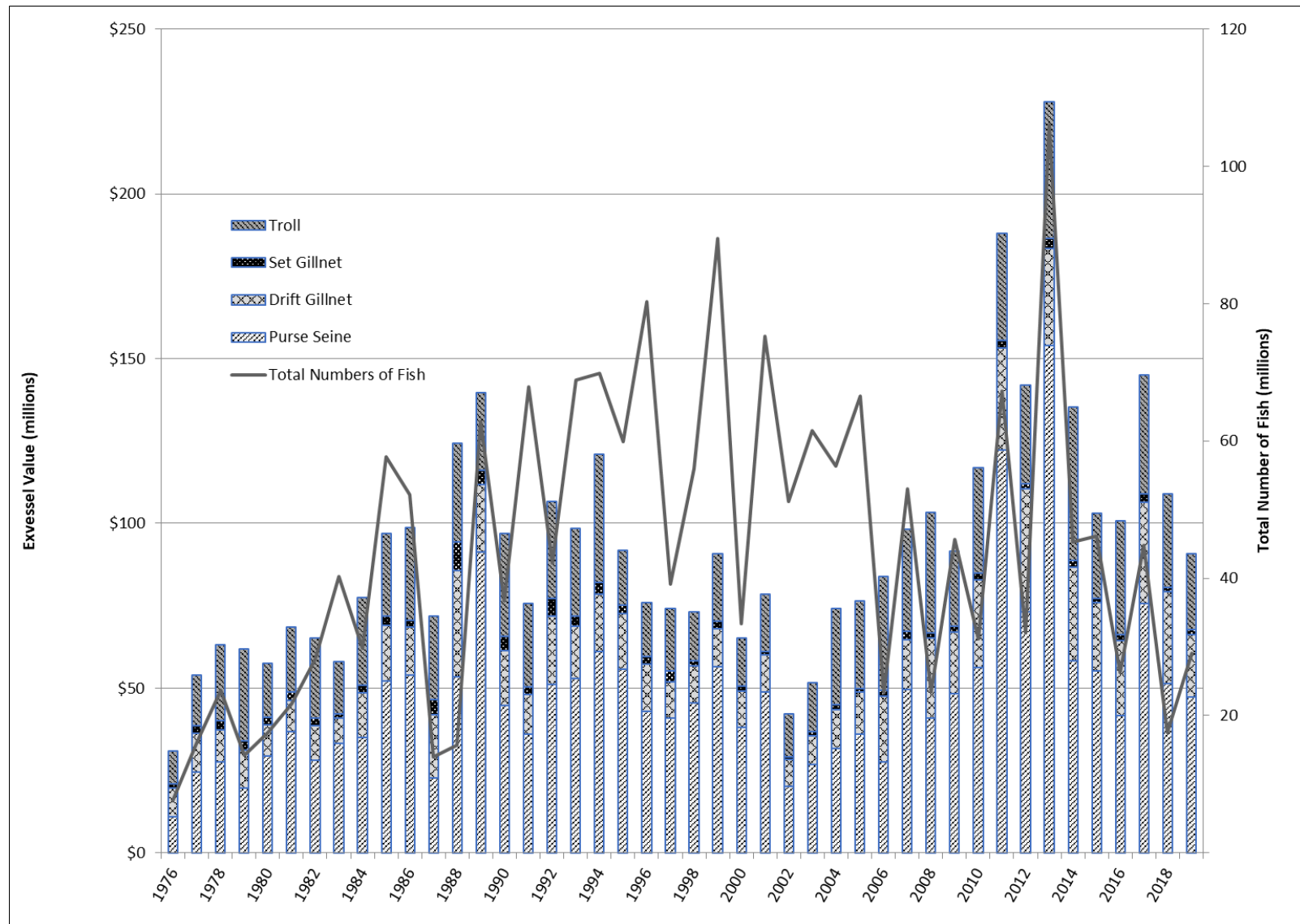


Figure 6.—Southeast Alaska total commercial exvessel value by gear type and season from CFEC (1975–2018) and fish ticket (2019) data, and number of salmon harvested by season, 1975 to 2019.

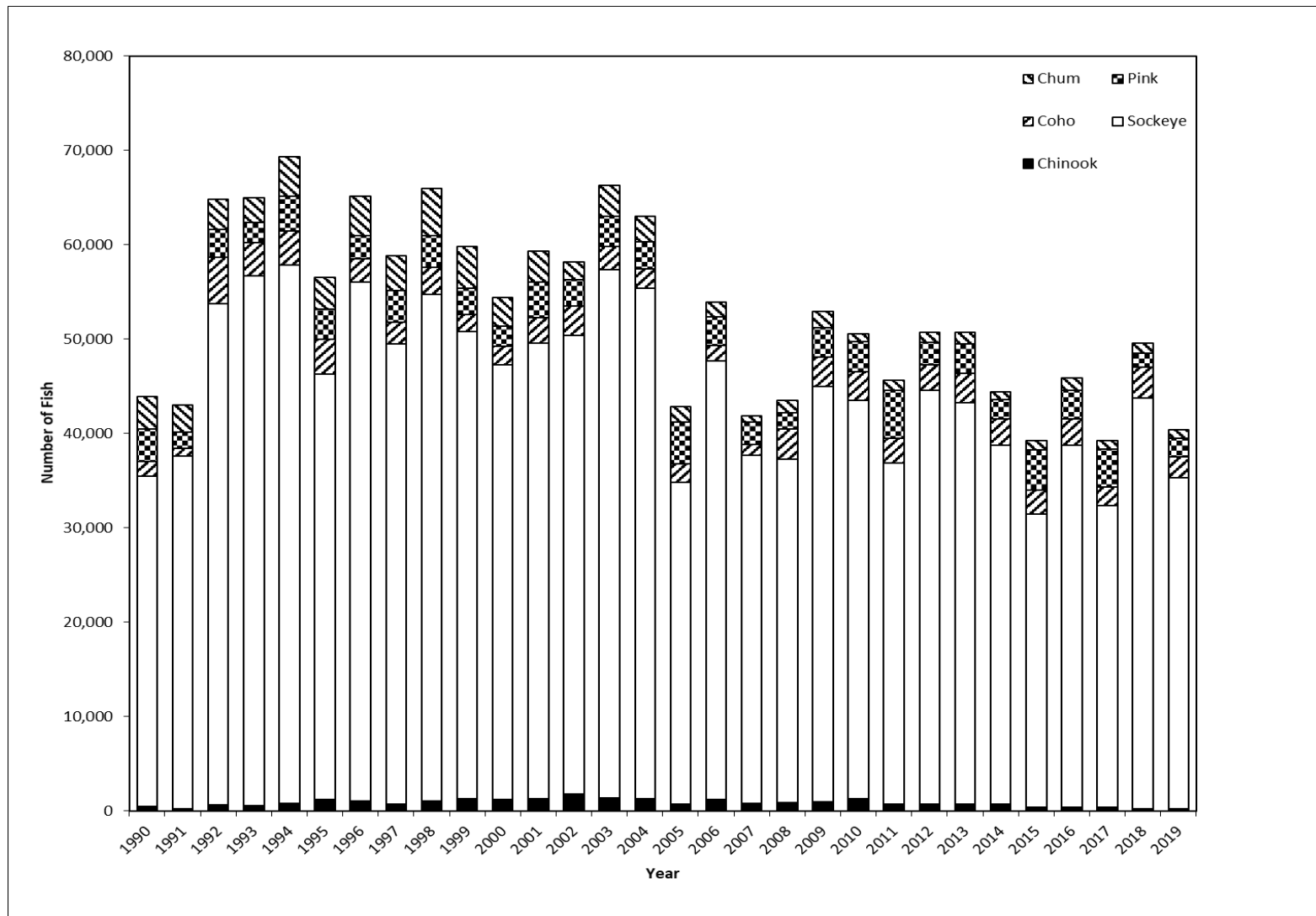


Figure 7.—Number of fish harvested in the subsistence/personal use fishery, by species for Southeast Alaska, 1985 to 2019.  
*Note:* Harvest information for 2019 is preliminary as not all permits had been returned at time of reporting.