

Overview of the 2018 Southeast Alaska and Yakutat Commercial, Personal Use, and Subsistence Salmon Fisheries

by

Sara Conrad

and

Dan Gray

June 2019

Alaska Department of Fish and Game

Divisions of Sport Fish and Commercial Fisheries



Symbols and Abbreviations

The following symbols and abbreviations, and others approved for the Système International d'Unités (SI), are used without definition in the following reports by the Divisions of Sport Fish and of Commercial Fisheries: Fishery Manuscripts, Fishery Data Series Reports, Fishery Management Reports, and Special Publications. All others, including deviations from definitions listed below, are noted in the text at first mention, as well as in the titles or footnotes of tables, and in figure or figure captions.

| Weights and measures (metric) | | General | | Mathematics, statistics | | |
|---|-----------------------|---|--|--|---|----------------|
| centimeter | cm | Alaska Administrative Code | AAC | all standard mathematical signs, symbols and abbreviations | | |
| deciliter | dL | all commonly accepted abbreviations | e.g., Mr., Mrs., AM, PM, etc. | alternate hypothesis | H _A | |
| gram | g | all commonly accepted professional titles | e.g., Dr., Ph.D., R.N., etc. | base of natural logarithm | <i>e</i> | |
| hectare | ha | | | catch per unit effort | CPUE | |
| kilogram | kg | | | coefficient of variation | CV | |
| kilometer | km | at | @ | common test statistics | (F, t, χ^2 , etc.) | |
| liter | L | | | confidence interval | CI | |
| meter | m | | | correlation coefficient (multiple) | R | |
| milliliter | mL | compass directions: | | correlation coefficient (simple) | r | |
| millimeter | mm | east | E | covariance | cov | |
| Weights and measures (English) | | north | N | degree (angular) | ° | |
| | cubic feet per second | ft ³ /s | south | S | degrees of freedom | df |
| | foot | ft | west | W | expected value | <i>E</i> |
| | gallon | gal | copyright | © | greater than | > |
| | inch | in | corporate suffixes: | | greater than or equal to | ≥ |
| | mile | mi | Company | Co. | harvest per unit effort | HPUE |
| | nautical mile | nmi | Corporation | Corp. | less than | < |
| | ounce | oz | Incorporated | Inc. | less than or equal to | ≤ |
| | pound | lb | Limited | Ltd. | logarithm (natural) | ln |
| | quart | qt | District of Columbia | D.C. | logarithm (base 10) | log |
| yard | yd | et alii (and others) | et al. | logarithm (specify base) | log ₂ , etc. | |
| Time and temperature | | et cetera (and so forth) | etc. | minute (angular) | ' | |
| | | exempli gratia | | not significant | NS | |
| | day | d | (for example) | e.g. | null hypothesis | H ₀ |
| | degrees Celsius | °C | Federal Information Code | FIC | percent | % |
| | degrees Fahrenheit | °F | id est (that is) | i.e. | probability | P |
| | degrees kelvin | K | latitude or longitude | lat or long | probability of a type I error (rejection of the null hypothesis when true) | α |
| | hour | h | monetary symbols (U.S.) | \$, ¢ | probability of a type II error (acceptance of the null hypothesis when false) | β |
| | minute | min | months (tables and figures): first three letters | Jan.,...,Dec | second (angular) | " |
| | second | s | registered trademark | ® | standard deviation | SD |
| | Physics and chemistry | | trademark | ™ | standard error | SE |
| all atomic symbols | | | United States (adjective) | U.S. | variance | |
| alternating current | | AC | United States of America (noun) | USA | population | Var |
| ampere | | A | U.S.C. | United States Code | sample | var |
| calorie | | cal | | | | |
| direct current | | DC | | | | |
| hertz | | Hz | | | | |
| horsepower | | hp | | | | |
| hydrogen ion activity (negative log of) | | pH | | | | |
| parts per million | | ppm | U.S. state | use two-letter abbreviations (e.g., AK, WA) | | |
| parts per thousand | ppt, ‰ | | | | | |
| volts | V | | | | | |
| watts | W | | | | | |

FISHERY MANAGEMENT REPORT NO. 19-06

**OVERVIEW OF THE 2018 SOUTHEAST ALASKA AND YAKUTAT
COMMERCIAL, PERSONAL USE, AND SUBSISTENCE SALMON
FISHERIES**

by

Sara Conrad

Alaska Department of Fish and Game, Division of Commercial Fisheries, Douglas

and

Dan Gray

Alaska Department of Fish and Game, Division of Commercial Fisheries, Sitka

Alaska Department of Fish and Game
Division of Sport Fish, Research and Technical Services
333 Raspberry Road, Anchorage, Alaska, 99518-1565

June 2019

The Fishery Management Reports series was established in 1989 by the Division of Sport Fish for the publication of an overview of management activities and goals in a specific geographic area, and became a joint divisional series in 2004 with the Division of Commercial Fisheries. Fishery Management Reports are intended for fishery and other technical professionals, as well as lay persons. Fishery Management Reports are available through the Alaska State Library and on the Internet: <http://www.adfg.alaska.gov/sf/publications/>. This publication has undergone regional peer review.

*Sara Conrad,
Alaska Department of Fish and Game, Division of Commercial Fisheries,
802 3rd Street,
Douglas, AK 99811-0024 USA*

and

*Dan Gray
Alaska Department of Fish and Game, Division of Commercial Fisheries
304 Lake Street, Room 103
Sitka, AK 99835-7563 USA*

This document should be cited as follows:

Conrad, S., and D. Gray. 2019. Overview of the 2018 Southeast Alaska and Yakutat commercial, personal use, and subsistence salmon fisheries. Alaska Department of Fish and Game, Fishery Management Report No. 19-06, Anchorage.

The Alaska Department of Fish and Game (ADF&G) administers all programs and activities free from discrimination based on race, color, national origin, age, sex, religion, marital status, pregnancy, parenthood, or disability. The department administers all programs and activities in compliance with Title VI of the Civil Rights Act of 1964, Section 504 of the Rehabilitation Act of 1973, Title II of the Americans with Disabilities Act (ADA) of 1990, the Age Discrimination Act of 1975, and Title IX of the Education Amendments of 1972.

If you believe you have been discriminated against in any program, activity, or facility please write:

ADF&G ADA Coordinator, P.O. Box 115526, Juneau, AK 99811-5526

U.S. Fish and Wildlife Service, 4401 N. Fairfax Drive, MS 2042, Arlington, VA 22203

Office of Equal Opportunity, U.S. Department of the Interior, 1849 C Street NW MS 5230, Washington DC 20240

The department's ADA Coordinator can be reached via phone at the following numbers:

(VOICE) 907-465-6077, (Statewide Telecommunication Device for the Deaf) 1-800-478-3648,

(Juneau TDD) 907-465-3646, or (FAX) 907-465-6078

For information on alternative formats and questions on this publication, please contact:

ADF&G Division of Sport Fish, Research and Technical Services, 333 Raspberry Road, Anchorage AK 99518 (907) 267-2375.

TABLE OF CONTENTS

| | Page |
|---|------|
| LIST OF TABLES..... | i |
| LIST OF FIGURES | ii |
| ABSTRACT | 1 |
| INTRODUCTION | 1 |
| SOUTHEAST ALASKA/YAKUTAT REGION | 1 |
| FISHERIES MANAGEMENT ORGANIZATION | 2 |
| FISHERY CHARACTERISTICS | 2 |
| 2018 HISTORICAL COMPARISON | 3 |
| FISHERY PARTICIPATION | 4 |
| 2018 SALMON HARVEST | 5 |
| HARVEST BY GEAR TYPE | 5 |
| EXVESSEL VALUE..... | 6 |
| SUBSISTENCE AND PERSONAL USE SALMON FISHERIES | 6 |
| REFERENCES CITED | 7 |
| TABLES AND FIGURES | 9 |

LIST OF TABLES

| Table | Page |
|--|------|
| 1. Southeast Alaska annual total commercial salmon harvest in numbers and percentages of the total by species, from 1988 to 2018..... | 10 |
| 2. Number of active limited entry and interim use permits issued and fished in the Southeast Alaska and Yakutat salmon fisheries, from 1975 to 2018..... | 11 |
| 3. Southeast Alaska region commercial salmon harvest, in numbers, by harvest type and fishery, 2018..... | 12 |
| 4. Southeast Alaska region annual commercial total salmon harvest by harvest type, in numbers and percent, from 1988 to 2018. | 13 |
| 5. Southeast Alaska region annual commercial Chinook salmon harvest by harvest type, in numbers and percent, from 1988 to 2018. | 14 |
| 6. Southeast Alaska region annual commercial total sockeye salmon harvest by harvest type, in numbers and percent, from 1988 to 2018..... | 15 |
| 7. Southeast Alaska region annual commercial total coho salmon harvest by harvest type, in numbers and percent, from 1988 to 2018. | 16 |
| 8. Southeast Alaska region annual commercial total pink salmon harvest by harvest type, in numbers and percent, from 1988 to 2018. | 17 |
| 9. Southeast Alaska region annual commercial total chum salmon harvest by harvest type, in numbers and percent, from 1988 to 2018..... | 18 |
| 10. Southeast Alaska region estimated exvessel value, harvest, average weight, and price paid per pound by gear and species, 2018..... | 19 |
| 11. Southeast Alaska Region salmon exvessel value estimates from CFEC (1976–2017) and fish ticket data (2018), by gear group, 1976–2018..... | 20 |
| 12. Southeast Alaska reported subsistence and personal use salmon harvest, by species, and number of permits issued, from 1985 to 2018. | 21 |
| 13. Yakutat Area reported subsistence salmon harvest, by species, and number of permits issued, from 1989 to 2018..... | 22 |

LIST OF FIGURES

| Figure | Page |
|--|------|
| 1. The Southeast Alaska/Yakutat Region (Region I) consists of Alaska waters between Cape Suckling on the north and Dixon Entrance on the south | 23 |
| 2. Boundaries for regulatory Districts 1 to 16, as well as Dixon Entrance District, within Southeast Alaska..... | 24 |
| 3. Boundaries for Yakutat and Yakataga regulatory Districts within the Yakutat management area..... | 25 |
| 4. Region I historical salmon harvest and recent 10-year average harvest, from 1878 to 2018. | 26 |
| 5. Region I historical salmon harvest by species and season, 1878 to 2018..... | 27 |
| 6. Total commercial exvessel value by gear type and season from CFEC (1975–2017) and fish ticket (2018) data, and number of salmon harvested by season, 1975 to 2018. | 28 |
| 7. Number of fish harvested in the subsistence/personal use fishery, by species, for Southeast Alaska, 1985 to 2018..... | 29 |
| 8. Number of fish harvested, by species, in the Yakutat subsistence/personal use fishery, 1989 to 2018..... | 30 |

ABSTRACT

Southeast Alaska and Yakutat commercial, personal use, and subsistence salmon fisheries are summarized for the 2018 season. Historical harvests are provided for comparison. Total commercial harvest in 2018 was 22.0 million salmon with an initial estimated exvessel value of \$131 million. Harvest by species in 2018 included 160,000 Chinook (*Oncorhynchus tshawytscha*), 637,000 sockeye (*O. nerka*), 1.6 million coho (*O. kisutch*), 8.1 million pink (*O. gorbuscha*), and 11.5 million chum salmon (*O. keta*). In the purse seine fishery, 247 permit holders harvested 12.2 million salmon, including 6.9 million pink and 5.0 million chum salmon. In the drift gillnet fishery, 421 permit holders harvested 3.6 million salmon, including 2.5 million chum, 556,000 pink, 259,000 coho, 227,000 sockeye, and 21,000 Chinook salmon. In the troll fishery, 672 power troll and 227 hand troll permit holders (899 total fishermen) harvested 100,000 Chinook, 938,000 coho, and 531,000 chum salmon. In the set gillnet fishery, 103 permit holders harvested 7,000 sockeye and 96,000 coho salmon. Hatchery organizations harvested a total of 3.8 million salmon for cost recovery including 3.2 million chum salmon. In the 2018 personal use and subsistence fisheries, 3,568 household permits were issued in Southeast Alaska and Yakutat combined. Harvest reporting for 2018 is incomplete, and reported harvest for 2017 with 77% of permits returned is about 39,000 salmon.

Key words: Southeast Alaska, Yakutat, 2018 season, commercial fisheries, personal use fisheries, subsistence fisheries, Chinook (*Oncorhynchus tshawytscha*), sockeye (*Oncorhynchus nerka*), coho (*Oncorhynchus kisutch*), pink (*Oncorhynchus gorbuscha*), chum (*Oncorhynchus keta*), salmon, exvessel value, permit holders, hatchery, purse seine, drift gillnet, power troll, hand troll, set gillnet

INTRODUCTION

This report is an overview of the commercial and subsistence/personal use salmon fisheries in the Southeast Alaska/Yakutat Region (Region I) for the 2018 season. Separate annual management reports will be issued which will provide more detailed summaries of the 2018 Southeast Alaska and Yakutat salmon troll fishery, the 2018 Yakutat Area commercial set gillnet fishery, and the 2018 Southeast Alaska purse seine and drift gillnet fisheries.

In the Southeast Alaska/Yakutat Region, 22.0 million salmon were commercially harvested in 2018 (Table 1). A total of 1,672 permit holders participated in the common property commercial salmon season in 2018, 6% less than in 2017 (Table 2). Salmon harvests by gear type for 2018 included 12.2 million by purse seine, 3.6 million by drift gillnet, 0.1 million by set gillnet, and 1.6 million by hand and power troll (Table 3). Additional commercial harvests included 3.8 million salmon for private nonprofit hatchery cost recovery and 0.5 million salmon within the Annette Island Reservation. The preliminary total exvessel value of the commercial salmon harvest for 2018 is \$131 million.

For the 2018 subsistence and personal use fisheries, 46% of the 3,568 Region I subsistence/personal use household permits have been returned at the time of this report. The reported Southeast and Yakutat subsistence/personal use harvest for 2017 is 39,000 salmon, of which 82% were sockeye (*O. nerka*) salmon.

SOUTHEAST ALASKA/YAKUTAT REGION

Fisheries management in the State of Alaska is divided between four large geographical regions: Southeast, Central, Westward, and Arctic–Yukon–Kuskokwim. The Southeast Alaska/Yakutat Region (Region I) consists of Alaska waters between Cape Suckling on the north and Dixon Entrance on the south (Figure 1). Region I is divided into two salmon net registration areas. Registration Area A, the Southeast Alaska area, extends from Dixon Entrance to Cape Fairweather. The Southeast Alaska area is divided into 17 regulatory districts, Districts 1 through 16 and the Dixon Entrance District (Figure 2). Some Registration Area A districts are further divided into sections by regulation. Registration Area D, the Yakutat area, extends from Cape

Fairweather to Cape Suckling. The Yakutat area is further divided into the Yakutat District, extending from Cape Fairweather to Icy Cape, and the Yakataga District, extending westward from Icy Cape to Cape Suckling (Figure 3).

For management and administrative purposes, Region I is divided into six management areas with offices located in Juneau, Ketchikan/Craig, Petersburg/Wrangell, Sitka, Haines, and Yakutat. The Craig and Yakutat offices are seasonally staffed and other offices are open all year.

FISHERIES MANAGEMENT ORGANIZATION

Management of Region I salmon fisheries is provided by area management biologists and regional management biologists and their staff. There are six area management biologists in Region I, corresponding with each area office. Management biologists with area responsibilities oversee the commercial salmon net (purse seine, drift gillnet, and set gillnet), herring, shrimp (pot gear), and the subsistence/personal use fisheries in their respective areas, as well as miscellaneous shellfish dive fisheries. Management biologists with regional responsibilities oversee the salmon troll, groundfish, crab, and shrimp beam trawl fisheries. There is a closely coordinated regional management approach for every fishery because of the size of the region and the spatial and temporal movement of fish and fishermen between the various management areas. Prior to each salmon season, the Alaska Department of Fish and Game (ADF&G) publishes detailed management plans that specify how that season's fishery will be managed and contain information about expected returns. Specific management actions are taken inseason which specify times and areas of fishery openings or additional measures. These actions are implemented through emergency orders under authority delegated by the department commissioner to regional and area management biologists. Details of openings are announced in widely distributed department-issued news releases. All landings of commercially harvested salmon are reported to the department on fish tickets by the initial buyers. Subsistence and personal use fisheries are managed under permit authority. Permits are issued separately for each management area and harvests are reported when permits are returned at the end of the season.

FISHERY CHARACTERISTICS

Salmon are commercially harvested in Southeast Alaska (Registration Area A) with purse seines and drift gillnets, in Yakutat (Registration Area D) with set gillnets, and in both areas with hand troll and power troll gear. The salmon net fisheries are confined to state waters. The troll fishery operates in both state waters and in the federal waters of the Exclusive Economic Zone. The use of floating fish traps is only allowed within the Annette Island Fishery Reserve, established by Presidential Proclamation in 1916; however, there have been no reported fish trap harvests since 1993.

Region I salmon fisheries are complex due to the mixed stock and mixed species nature of the returns and to the utilization of returns by several different gear groups that often harvest the same stocks of fish. Because the region contains approximately 5,500 salmon-producing streams and tributaries of various productivity levels, it is impractical to apply stock-specific fisheries management for most stocks. Additionally, some salmon harvested in the region originate from other states (primarily Washington and Oregon) and Canada. Net and troll fisheries in Southeast Alaska and Yakutat are managed for sustained yield and allocated among users according to Alaska Board of Fisheries regulations and harvest-sharing provisions of the Pacific Salmon Treaty between the United States and Canada.

2018 HISTORICAL COMPARISON

Commercial utilization of the Southeast Alaska region salmon resources began in the late 1870s (Figure 4). Until the early 1900s, sockeye salmon was the primary species harvested (Figure 5). Pink salmon (*O. gorbuscha*) began to dominate the harvest in the early 1900s. During the past 10 years, pink salmon has made up 70% of the region's total salmon harvest (Table 1). The relative order of harvest (in numbers of fish) from highest to lowest is generally pink, chum (*O. keta*), coho (*O. kisutch*), sockeye, and Chinook (*O. tshawytscha*) salmon.

The harvest of salmon in Region I peaked at over 60 million in the late 1930s and early 1940s and declined to historical low levels in the 1950s and early 1960s (Figure 4). During the middle to late 1960s harvests increased, but in the early 1970s another decline in production occurred. From the early 1980s through the mid-2000s salmon harvests in Region I increased substantially. Record harvests since statehood occurred during the 12-year period from 1993 through 2004 for Chinook (2004), sockeye (1993), coho (1994), and chum salmon (1996; Table 1). All-time record harvests going back to 1878 were set for sockeye and Chinook salmon prior to statehood, with 3.5 million sockeye salmon harvested in 1914 and 878,000 Chinook salmon harvested in 1937 (Byerly et al. 1999). The record harvest for coho salmon was 5.7 million in 1994; the record for chum salmon was 16.0 million in 1996; and the record pink salmon harvest was 94.8 million in 2013. The record regional total commercial harvest was set in 2013 at 112.5 million salmon. Within the most recent decade, harvests have fluctuated greatly. Because pink salmon are the most abundant species, downward harvest trends are in large part due to low even-year pink salmon returns that began in 2006. Odd-year harvests over the same period have been above the long-term average.

Salmon harvests since 1987 and average harvests by gear and harvest type are presented in Table 4. The various salmon fisheries in the region are well established, and the distribution of harvests between fisheries has changed little when comparing the recent 10-year average (2008–2017) or the long-term average since 1962. The exception is that private hatchery cost-recovery harvests, which began around 1980, now account for a substantial proportion of overall harvests. Recent 10-year average harvests in percentages by gear type are as follows: 72% by purse seine, 11% by drift gillnet, 8% by hatchery organizations, 5% by troll, 4% by Annette Island, and 1% by set gillnet. In 2018, the total harvest of 22.0 million salmon ranked 41st of the past 57 years (since 1962).

The Chinook salmon harvest of 160,000 in 2018 was below both the recent and long-term averages (Table 5, Figure 5). The 2018 Chinook salmon harvest ranks as the lowest over the previous 57 years. Targeted Chinook salmon fisheries are composed of three elements: (1) coastwide mixed stocks harvested within limits of the all-gear Pacific Salmon Treaty harvest ceiling; (2) production from Alaska Chinook salmon enhancement programs; and (3) directed fisheries on surplus returns to the Stikine and/or Taku rivers. The average total Chinook salmon harvest since 1962 has been around 300,000 fish. Chinook salmon less than 28 inches may be retained and sold in the purse seine fishery and Chinook salmon of all sizes may be sold in the drift gillnet fishery. The Pacific Salmon Treaty accounts for large Chinook salmon, greater than or equal to 28 inches overall length, as Treaty Chinook. Preliminary harvests of coastwide Chinook salmon accountable under the Pacific Salmon Treaty included 100,000 by troll gear, 1,000 by purse seine gear, 4,000 by gillnet gear, and 21,000 for sport fisheries. Total commercial harvests of Alaska hatchery origin Chinook salmon were 43,000, 27% of total Chinook salmon

harvests, and 20,000 were harvested in private hatchery cost-recovery fisheries (ADF&G 2018). For transboundary river stocks regulated under the Pacific Salmon Treaty, the preseason forecasts for the Stikine and Taku Rivers in 2018 provided no allowable catch (AC) for directed fisheries on returns of large Chinook (28 inches in length or greater).

The harvest of sockeye salmon was 637,000 in 2018 (Table 6, Figure 5). This harvest was below both the recent 10-year average of 1.1 million and the long-term average of 1.3 million. The 2018 sockeye salmon harvest ranks 53rd over the previous 57 years since 1962. Sockeye salmon harvests in the northern boundary area and transboundary river fisheries are regulated under the Pacific Salmon Treaty to provide for conservation and harvest sharing with Canada. The Southeast Alaska Area purse seine fishery harvest of 231,000 fish was below the recent and long-term averages and accounted for 36% of the regional total harvest. The drift gillnet fishery harvest of 227,000 was below the recent and long-term averages and accounted for 36% of the regional total harvest. The set gillnet fishery harvest of 7,000 was below the recent and long-term averages and accounted for 1% of the regional total harvest.

The 2018 coho salmon harvest was 1.6 million (Table 7, Figure 5). This harvest was less than the long-term and recent averages. The 2018 coho salmon harvest ranks 36th of the 57 years since 1962. The coho salmon harvest in the troll fishery was 0.9 million, less than the long-term and recent average, and accounted for 59% of the harvest. Purse seine, drift gillnet, and set gillnet harvests of coho salmon were below long-term and recent averages.

The 2018 pink salmon harvest was 8.1 million, 37% of the total region salmon harvest (Table 8, Figure 5). The purse seine pink salmon harvest was 6.9 million, 85% of the total pink salmon harvest. The 2018 pink salmon harvest was below the recent and long-term averages, ranking as the 51st largest harvest since 1962. Following a sharp decline in harvest in the 2006 season, a stronger odd-year return pattern was established and continued in 2018.

The 2018 chum salmon harvest of 11.5 million fish ranks tenth since 1962 and was above the recent average of 10.3 million (Table 9, Figure 5). The purse seine chum salmon harvest was 5.0 million, 43% of the total chum salmon harvest. Most chum salmon production in the region is attributable to hatchery production. Before hatchery chum salmon production became significant in 1984, the 1962–1983 regional average chum salmon harvest was 1.6 million.

FISHERY PARTICIPATION

According to preliminary data, 2,866 total limited entry permits were active (issued or eligible to be renewed) in 2018. Active permits included 315 purse seine, 473 drift gillnet, 167 set gillnet, 950 hand troll, and 961 power troll permits (Table 2). A total of 1,672 permit holders reported salmon landings in calendar year 2018, including 247 purse seine, 423 drift gillnet, 103 set gillnet, 227 hand troll, and 672 power troll permit holders.

Purse seine participation by 247 permit holders in 2018 was a decrease of 12 permits from 2017 and a decrease from the recent 10-year average participation of 254 permits. The number of purse seine permits issued was reduced in 2008 by 35 permits through a permit buyback fleet-reduction program. In 2012, an additional buyback program administered by the CFEC and the National Marine Fisheries Service further reduced the number of permits issued by 64 permits (Table 2). Participation in the purse seine fishery in 2018 was sixth highest during the most recent 10-year period. Drift gillnet participation by 423 permit holders was an increase from the 2017 level and was below the recent 10-year average of 426 permits. Set gillnet effort in 2018 by

103 permit holders was below the recent 10-year average and the lowest during that period. Power troll participation by 672 permit holders was below the recent 10-year average of 741 permits and hand troll effort by 227 permit holders was below the recent 10-year average of 335 permits. Overall participation levels in 2018 were 11% below the recent 10-year average.

2018 SALMON HARVEST

The Region I cumulative commercial salmon harvest by all harvest categories, including hatchery cost recovery, was 22.0 million fish in 2018 (Table 3). Total common property commercial harvest was 17.6 million fish, 80% of total harvest. Overall harvest in numbers of salmon in 2018 was 44% of the 2017 harvest. The 2018 harvests by species compared with 2017 were as follows: Chinook 92%, sockeye 79%, coho 56%, pink 23%, and chum salmon 100% (Table 1). The Region I total commercial salmon harvest proportions by species were: Chinook 1%, sockeye 3%, coho 7%, pink 37%, and chum salmon 52%. The 2018 combined-gear, large Chinook salmon harvest of 160,000 fish was 55% of the most recent 10-year average and 53% of the long-term average. The sockeye salmon harvest of 637,000 was 59% of the recent 10-year average and 48% of the long-term average. The coho salmon harvest of 1.6 million fish was 59% of the 10-year average and 74% of the long-term average. The pink salmon harvest of 8.1 million was 21% of the 10-year average and 26% of the long-term average. The chum salmon harvest of 11.5 million was 112% of the 10-year average and 189% of the long-term average (Table 1). The all species total harvest was 42% of the recent 10-year average harvest and 54% of the long-term average harvest.

HARVEST BY GEAR TYPE

The 2018 Region I salmon harvest by gear type or harvest category and species are summarized in Table 3. Historical harvests showing percentages of harvest by gear are summarized in Table 4. Salmon landed by purse seine gear accounted for 56% of the total salmon harvest, followed by drift gillnet (16%), hatchery cost recovery (17%), troll (7%), and Annette Island (2%) fisheries. Combined hand and power troll harvests accounted for 62% of regional Chinook salmon harvest and 59% of coho salmon harvest (Tables 5 and 7). Of the total harvest, purse seine accounted for 36% of sockeye, 85% of pink, and 43% of chum salmon in the region (Tables 6, 8, and 9). Drift gillnet accounted for 13% of Chinook, 36% of sockeye, 16% of coho, and 22% of chum salmon harvest. Set gillnet harvested 1% of sockeye and 6% of coho salmon. Approximately 13% of Chinook, 25% of sockeye, 9% of coho, and 28% of chum salmon harvest was taken in hatchery cost-recovery fisheries.

Total Chinook salmon harvests of 160,000 included 100,000 by troll, 17,000 by purse seine, 21,000 by drift gillnet, 20,000 in hatchery cost recovery, 2,000 by Annette Island Reservation, and 300 by Yakutat set gillnet fisheries. Sockeye salmon harvests of 637,000 included 231,000 by purse seine, 227,000 by drift gillnet, 159,000 by hatchery cost recovery, and 7,000 by set gillnet fisheries. Coho salmon harvests of 1.6 million included 0.9 million by troll, 259,000 by drift gillnet, 154,000 by purse seine, 137,000 in hatchery cost recovery, and 96,000 by set gillnet fisheries. Pink salmon harvests of 8.1 million included 6.9 million by purse seine, 556,000 by drift gillnet, and 296,000 in Annette Island Reservation fisheries. Chum salmon harvests of 11.5 million included 5.0 million by purse seine, 2.5 million by drift gillnet, 3.2 million in cost recovery, 531,000 by troll, and 211,000 by Annette Island Reservation fisheries.

EXVESSEL VALUE

The initial reported value of the 2018 Region I commercial salmon harvest based on fish ticket data for all fisheries is \$131 million (Table 10). The total 2018 salmon harvest in numbers of fish was 44% of the 2017 harvest. The 2018 commercial harvest of 145 million pounds was 59% of the 2017 commercial harvest of 247 million pounds. In 2018, chum salmon accounted for 67% of the total weight of salmon harvested, compared with 39% in 2017. In 2018, pink salmon made up 21% of the total weight of salmon harvested, compared with 52% in 2017. Average weights by species were similar (within 5%) in 2018 compared with 2017 for sockeye, pink, and chum, and increased for coho (33%) and Chinook (6%) salmon. 2018 prices, as initially reported on fish tickets, compared to 2017 prices from CFEC data increased for Chinook from \$7.84/lb to \$8.08/lb, for sockeye salmon from \$1.73/lb to \$1.96/lb, for coho salmon from \$1.57/lb to \$1.79/lb, for pink salmon from \$0.37/lb to \$0.38/lb, and for chum salmon from \$0.82/lb to \$0.91/lb. Following year-end annual commercial operator's reports and further analysis by CFEC, the estimated wholesale value of the 2018 fishery is expected to increase.

The preliminary reported exvessel value of the 2018 Region I commercial salmon harvest for purse seine, gillnet, and troll fisheries combined based on fish ticket data is \$110.4 million. The 2018 season exvessel value for these salmon fisheries is 83% of the recent 10-year average of \$133.7 million and ranks tenth highest over the 44-year period since 1975. Common property fishery exvessel value estimates for 2018 exclude Annette Island Reservation, hatchery cost recovery, and miscellaneous harvests.

The 2018 exvessel value by gear was highest for the purse seine fishery (\$51.2 million), followed by troll (\$30.2 million), drift gillnet (\$27.9 million), hatchery cost recovery (\$17.7 million), Annette Island (\$2.7 million), and set gillnet (\$1.1 million) fisheries. Comparing the conservative, preliminary value for 2018 to reported CFEC fishery values by fishery since 1975, 2018 would rank as the 16th highest value for purse seine, seventh highest for drift gillnet, 12th highest for troll, and 41st highest for the Yakutat set gillnet fishery. The regional value breakdown by species included \$14.4 million for Chinook, \$6.5 million for sockeye, \$19.6 million for coho, \$11.9 million for pink, and \$78.6 million for chum salmon.

SUBSISTENCE AND PERSONAL USE SALMON FISHERIES

In 2018, the Alaska Department of Fish and Game began online permitting for personal use and subsistence fisheries in Southeast Alaska. There is now one permit for all of Southeast Alaska with specific regulations and guidelines for individual management areas provided to the user depending on where they intend to fish. Since unique permits are not required for each management area, there is no area office associated with permit data. As a result, permits and harvest will be analyzed by city of residence instead of management area, as was done in past versions of this report.

Reporting of harvest information for subsistence and personal use fisheries for the Southeast Alaska and Yakutat areas remains incomplete for 2018, with 59% of Yakutat permits returned and 45% of Southeast Alaska permits returned at the time of this report. For 2017, the combined harvest for these areas is 35,000 salmon, less than the most recent 10-year average of 45,000 salmon. Sockeye salmon accounted for 88% of this reported harvest.

A total of 3,461 subsistence and/or personal use salmon permits were issued in Southeast Alaska in 2018 (Table 12). One permit is issued per household. Combined subsistence/personal use

fishery permits issued by community of residence included 793 in Juneau, 788 in Sitka, 458 in Haines, 261 in Ketchikan, 158 in Petersburg, and 111 in Wrangell. With 45% of permits returned at the time of this report, the initial reported 2018 harvest is 33,000 salmon (Table 12). As is typical, sockeye salmon made up 83% of the regional harvest (Figure 7). The harvest numbers are not finalized until the following year, when most permits have been returned. Salmon harvests by community of residence are more completely reported for 2017, with 83% of permits returned, and include 6,865 fish in Juneau, 8,766 fish in Sitka, 7,841 fish in Haines, 1,463 fish in Ketchikan, 1,402 fish in Petersburg, and 594 fish in Wrangell.

During 2018, a total of 107 subsistence permits were issued for the Yakutat area, Registration Area D (Table 13). Yakutat subsistence permits are not required to be returned until the spring of the following year, and only 58% of the 2018 permits have been returned and entered at this time. Reported harvests in 2017 were 3,800 salmon, including 2,700 sockeye and 600 coho, with 85% of the permits returned. In 2017, sockeye salmon harvest made up 70% of the total subsistence harvest and coho salmon harvest accounted for 16% (Table 13, Figure 8). The recent 10-year average harvests include 3,900 sockeye and 800 coho salmon.

REFERENCES CITED

- ADF&G (Alaska Department of Fish and Game). 2018. Coded Wire Tag Lab—Online Reports—Recoveries by Fishery Report. <http://mtalab.adfg.alaska.gov/CWT/reports/recovery.asp> (Accessed December 15, 2018).
- Byerly, M., B. Brooks, B. Simonson, H. Savikko, and H. J. Geiger. 1999. Alaska commercial salmon catches, 1878–1997. Alaska Department of Fish and Game, Division of Commercial Fisheries, Regional Information Report No. 5J99-05, Juneau.
- CFEC (Commercial Fisheries Entry Commission). 2018. Fishery Statistics—Permits and Permit Holders—Permit Status—Fishery Statistics—Participation and Earnings—Basic Information Tables—Salmon, S01A, S03A, S04D, S05B, and S15B. http://www.cfec.state.ak.us/fishery_statistics/permits.htm (Accessed January 3, 2018).

TABLES AND FIGURES

Table 1.–Southeast Alaska annual total commercial salmon harvest in numbers and percentages of the total by species, from 1988 to 2018.

| Year | Chinook ^a | % | Jacks ^b | % | Sockeye | % | Coho | % | Pink | % | Chum | % | Total |
|-----------------|----------------------|------|--------------------|------|-----------|------|-----------|------|------------|------|------------|------|-------------|
| 1988 | 263,847 | 2% | 1,034 | <1% | 1,460,417 | 8% | 1,046,668 | 6% | 11,207,162 | 64% | 3,535,591 | 20% | 17,514,719 |
| 1989 | 280,964 | <1% | 4,092 | <1% | 2,124,840 | 3% | 2,204,044 | 3% | 59,460,203 | 90% | 1,968,894 | 3% | 66,043,037 |
| 1990 | 342,379 | 1% | 3,776 | <1% | 2,155,716 | 5% | 2,868,217 | 7% | 32,342,002 | 81% | 2,217,895 | 6% | 39,929,985 |
| 1991 | 325,602 | <1% | 5,575 | <1% | 2,063,586 | 3% | 3,197,003 | 5% | 61,926,339 | 87% | 3,336,043 | 5% | 70,854,148 |
| 1992 | 233,924 | 1% | 2,363 | <1% | 2,666,422 | 6% | 3,696,209 | 8% | 34,963,298 | 75% | 4,936,515 | 11% | 46,498,731 |
| 1993 | 280,849 | <1% | 3,962 | <1% | 3,190,960 | 4% | 3,665,435 | 5% | 57,299,350 | 79% | 7,879,868 | 11% | 72,320,424 |
| 1994 | 241,100 | <1% | 6,336 | <1% | 2,392,489 | 3% | 5,721,700 | 8% | 57,274,877 | 75% | 10,403,085 | 14% | 76,039,587 |
| 1995 | 218,451 | <1% | 1,978 | <1% | 1,795,331 | 3% | 3,345,678 | 5% | 47,965,506 | 74% | 11,225,693 | 17% | 64,552,637 |
| 1996 | 213,640 | <1% | 947 | <1% | 2,799,848 | 3% | 3,156,951 | 4% | 64,629,714 | 74% | 16,043,397 | 18% | 86,844,497 |
| 1997 | 303,898 | 1% | 558 | <1% | 2,477,394 | 5% | 1,974,427 | 4% | 28,975,224 | 64% | 11,789,139 | 26% | 45,520,640 |
| 1998 | 232,906 | <1% | 1,705 | <1% | 1,375,358 | 2% | 2,989,080 | 5% | 42,535,402 | 68% | 15,695,285 | 25% | 62,829,736 |
| 1999 | 195,048 | <1% | 3,047 | <1% | 1,160,730 | 1% | 3,630,234 | 4% | 77,848,284 | 80% | 14,930,932 | 15% | 97,768,275 |
| 2000 | 232,546 | 1% | 1,349 | <1% | 1,229,390 | 3% | 1,957,028 | 5% | 20,313,426 | 51% | 15,910,909 | 40% | 39,644,648 |
| 2001 | 243,225 | <1% | 2,585 | <1% | 2,035,230 | 3% | 3,300,932 | 4% | 67,055,991 | 82% | 8,754,416 | 11% | 81,392,379 |
| 2002 | 386,384 | 1% | 1,583 | <1% | 806,447 | 1% | 3,242,516 | 6% | 45,331,007 | 79% | 7,455,007 | 13% | 57,222,944 |
| 2003 | 416,684 | 1% | 1,188 | <1% | 1,525,356 | 2% | 2,498,375 | 4% | 52,515,632 | 77% | 11,115,085 | 16% | 68,072,320 |
| 2004 | 483,330 | 1% | 697 | <1% | 2,037,745 | 3% | 3,084,663 | 5% | 45,333,012 | 73% | 11,371,623 | 18% | 62,311,070 |
| 2005 | 447,264 | 1% | 728 | <1% | 1,607,835 | 2% | 3,002,784 | 4% | 59,182,242 | 84% | 6,427,530 | 9% | 70,668,383 |
| 2006 | 370,366 | 1% | 1,275 | <1% | 1,333,496 | 5% | 2,091,875 | 7% | 11,695,411 | 40% | 13,555,280 | 47% | 29,047,703 |
| 2007 | 357,900 | 1% | 1,328 | <1% | 1,904,802 | 3% | 2,062,643 | 4% | 44,884,740 | 77% | 9,417,807 | 16% | 58,629,220 |
| 2008 | 245,738 | 1% | 533 | <1% | 436,302 | 2% | 2,381,473 | 8% | 15,974,351 | 57% | 9,053,088 | 32% | 28,091,485 |
| 2009 | 267,657 | 1% | 976 | <1% | 925,749 | 2% | 2,635,482 | 5% | 38,101,430 | 74% | 9,660,363 | 19% | 51,591,657 |
| 2010 | 260,224 | 1% | 1,443 | <1% | 720,922 | 2% | 2,587,593 | 7% | 24,303,423 | 65% | 9,474,918 | 25% | 37,348,523 |
| 2011 | 343,928 | <1% | 2,517 | <1% | 1,242,445 | 2% | 2,311,332 | 3% | 59,088,287 | 80% | 10,730,140 | 15% | 73,718,649 |
| 2012 | 279,177 | 1% | 796 | <1% | 947,219 | 3% | 2,086,721 | 6% | 21,304,390 | 58% | 12,374,853 | 33% | 36,993,156 |
| 2013 | 240,308 | <1% | 1,881 | <1% | 974,665 | 1% | 3,877,145 | 3% | 94,786,940 | 84% | 12,573,032 | 11% | 112,453,971 |
| 2014 | 427,226 | 1% | 1,105 | <1% | 1,669,932 | 3% | 3,789,619 | 8% | 37,193,746 | 75% | 6,679,647 | 13% | 49,761,275 |
| 2015 | 350,189 | 1% | 611 | <1% | 1,528,774 | 3% | 2,163,943 | 4% | 35,161,426 | 69% | 11,627,334 | 23% | 50,832,277 |
| 2016 | 336,647 | 1% | 229 | <1% | 1,505,984 | 5% | 2,332,200 | 7% | 18,395,997 | 58% | 9,117,266 | 29% | 31,688,323 |
| 2017 | 172,838 | <1% | 897 | <1% | 801,373 | 2% | 2,884,524 | 6% | 34,826,541 | 69% | 11,430,273 | 23% | 50,116,446 |
| 2018 | 159,672 | 1% | 614 | <1% | 636,890 | 3% | 1,603,083 | 7% | 8,095,820 | 37% | 11,471,755 | 52% | 21,967,834 |
| Averages | | | | | | | | | | | | | |
| 1962–2017 | 299,846 | 1% | - | - | 1,334,964 | 4% | 2,177,845 | 6% | 31,120,857 | 73% | 6,053,766 | 15% | 40,988,353 |
| 2008–2017 | 292,393 | 1% | 1,099 | <1% | 1,075,337 | 3% | 2,705,003 | 6% | 37,913,653 | 69% | 10,272,091 | 22% | 52,259,576 |
| Harvest | | | | | | | | | | | | | |
| Max. & year | 483,330 | 2004 | 6,336 | 1994 | 3,190,960 | 1993 | 5,721,700 | 1994 | 94,786,940 | 2013 | 16,043,397 | 1996 | 112,453,971 |
| Min. & year | 159,672 | 2018 | 166 | 1983 | 244,855 | 1975 | 427,457 | 1975 | 3,109,343 | 1967 | 560,595 | 1969 | 5,691,033 |

^a Annual Chinook salmon harvest is reported by troll season, October 1–September 30, since 1979 when the regulatory season was implemented.

^b Jack Chinook are ≤28 inches. Chinook salmon of <21 inches may be retained and sold in the purse seine fishery, and Chinook of all sizes may be sold in the drift gillnet fishery. Jack fish ticket data were revised in 2012, for the years 2005–2012, to provide more accurate accounting of gillnet harvested Chinook salmon for Pacific Salmon Treaty accounting purposes. Chinook salmon in the drift gillnet fishery will be based on recording of all sizes as one category on fish tickets, and separate accounting of jacks will be based on port sampling data.

Table 2.—Number of active limited entry and interim use permits issued and fished in the Southeast Alaska and Yakutat salmon fisheries, from 1975 to 2018.

| Year | Number of Permits | | | | | | | | | | | |
|-----------|-------------------|--------|---------------|--------|-------------|--------|------------|--------|-------------|--------|--------|--------|
| | Purse Seine | | Drift Gillnet | | Set Gillnet | | Hand Troll | | Power Troll | | Total | |
| | Issued | Fished | Issued | Fished | Issued | Fished | Issued | Fished | Issued | Fished | Issued | Fished |
| 1975 | 477 | 287 | 511 | 443 | 215 | 141 | 2,088 | 1,092 | 1,079 | 762 | 4,370 | 2,725 |
| 1976 | 418 | 280 | 487 | 432 | 159 | 133 | 2,082 | 1,238 | 998 | 745 | 4,144 | 2,828 |
| 1977 | 414 | 325 | 474 | 438 | 159 | 144 | 2,953 | 1,836 | 970 | 750 | 4,970 | 3,493 |
| 1978 | 420 | 376 | 491 | 474 | 164 | 155 | 3,923 | 2,624 | 976 | 816 | 5,974 | 4,445 |
| 1979 | 418 | 319 | 491 | 449 | 167 | 155 | 3,702 | 2,207 | 980 | 819 | 5,758 | 3,949 |
| 1980 | 418 | 335 | 489 | 445 | 167 | 159 | 2,436 | 1,667 | 974 | 842 | 4,484 | 3,448 |
| 1981 | 418 | 364 | 487 | 447 | 167 | 158 | 2,048 | 1,153 | 970 | 793 | 4,090 | 2,915 |
| 1982 | 421 | 370 | 487 | 431 | 164 | 147 | 1,914 | 1,067 | 968 | 810 | 3,954 | 2,825 |
| 1983 | 421 | 338 | 481 | 432 | 165 | 145 | 2,150 | 946 | 968 | 810 | 4,185 | 2,671 |
| 1984 | 423 | 383 | 481 | 437 | 164 | 140 | 2,147 | 860 | 963 | 795 | 4,178 | 2,615 |
| 1985 | 420 | 368 | 485 | 446 | 164 | 148 | 2,030 | 903 | 963 | 830 | 4,062 | 2,695 |
| 1986 | 420 | 368 | 488 | 460 | 164 | 154 | 1,983 | 804 | 957 | 827 | 4,012 | 2,613 |
| 1987 | 420 | 381 | 486 | 465 | 165 | 154 | 1,937 | 763 | 957 | 828 | 3,965 | 2,591 |
| 1988 | 420 | 394 | 485 | 470 | 165 | 159 | 1,870 | 777 | 956 | 828 | 3,896 | 2,628 |
| 1989 | 420 | 365 | 485 | 466 | 166 | 160 | 1,817 | 694 | 955 | 830 | 3,843 | 2,515 |
| 1990 | 420 | 360 | 486 | 465 | 166 | 158 | 1,782 | 699 | 956 | 839 | 3,810 | 2,521 |
| 1991 | 420 | 383 | 485 | 465 | 168 | 161 | 1,741 | 700 | 959 | 847 | 3,773 | 2,556 |
| 1992 | 420 | 354 | 485 | 467 | 170 | 159 | 1,689 | 645 | 957 | 837 | 3,721 | 2,462 |
| 1993 | 419 | 382 | 482 | 460 | 171 | 157 | 1,633 | 600 | 956 | 836 | 3,661 | 2,435 |
| 1994 | 418 | 390 | 483 | 446 | 171 | 150 | 1,579 | 547 | 954 | 804 | 3,605 | 2,337 |
| 1995 | 418 | 373 | 483 | 452 | 171 | 147 | 1,540 | 460 | 954 | 818 | 3,566 | 2,250 |
| 1996 | 417 | 357 | 484 | 439 | 171 | 139 | 1,501 | 412 | 967 | 737 | 3,540 | 2,084 |
| 1997 | 416 | 351 | 482 | 423 | 170 | 141 | 1,459 | 387 | 968 | 740 | 3,495 | 2,042 |
| 1998 | 416 | 377 | 479 | 422 | 170 | 142 | 1,409 | 304 | 967 | 732 | 3,441 | 1,977 |
| 1999 | 416 | 359 | 481 | 430 | 170 | 128 | 1,370 | 338 | 965 | 721 | 3,402 | 1,976 |
| 2000 | 416 | 356 | 480 | 422 | 170 | 125 | 1,329 | 315 | 963 | 712 | 3,358 | 1,930 |
| 2001 | 415 | 345 | 482 | 433 | 169 | 114 | 1,295 | 307 | 965 | 701 | 3,326 | 1,900 |
| 2002 | 415 | 273 | 482 | 391 | 167 | 87 | 1,247 | 253 | 965 | 666 | 3,276 | 1,670 |
| 2003 | 416 | 235 | 477 | 375 | 167 | 104 | 1,189 | 265 | 965 | 637 | 3,214 | 1,616 |
| 2004 | 414 | 209 | 478 | 348 | 168 | 112 | 1,139 | 324 | 961 | 688 | 3,160 | 1,681 |
| 2005 | 415 | 232 | 478 | 368 | 168 | 114 | 1,108 | 353 | 961 | 715 | 3,130 | 1,782 |
| 2006 | 414 | 230 | 477 | 358 | 167 | 104 | 1,104 | 371 | 961 | 737 | 3,123 | 1,800 |
| 2007 | 415 | 237 | 476 | 387 | 166 | 120 | 1,083 | 375 | 961 | 740 | 3,101 | 1,859 |
| 2008 | 380 | 212 | 475 | 392 | 165 | 128 | 1,065 | 375 | 961 | 745 | 3,046 | 1,852 |
| 2009 | 379 | 256 | 474 | 406 | 167 | 122 | 1,055 | 364 | 961 | 745 | 3,036 | 1,893 |
| 2010 | 379 | 235 | 474 | 422 | 167 | 127 | 1,044 | 339 | 962 | 729 | 3,026 | 1,852 |
| 2011 | 379 | 269 | 474 | 442 | 167 | 121 | 1,037 | 372 | 962 | 760 | 3,019 | 1,964 |
| 2012 | 315 | 233 | 474 | 445 | 168 | 113 | 1,019 | 353 | 961 | 743 | 2,937 | 1,887 |
| 2013 | 315 | 276 | 473 | 451 | 168 | 106 | 1,002 | 362 | 961 | 722 | 2,919 | 1,917 |
| 2014 | 315 | 260 | 473 | 431 | 168 | 117 | 992 | 346 | 962 | 756 | 2,910 | 1,910 |
| 2015 | 315 | 281 | 473 | 421 | 167 | 112 | 978 | 316 | 962 | 740 | 2,895 | 1,870 |
| 2016 | 315 | 254 | 473 | 424 | 167 | 109 | 959 | 269 | 961 | 745 | 2,875 | 1,801 |
| 2017 | 315 | 259 | 473 | 421 | 167 | 113 | 950 | 256 | 961 | 721 | 2,875 | 1,784 |
| 2018 | 315 | 247 | 473 | 423 | 167 | 103 | 950 | 227 | 961 | 672 | 2,866 | 1,672 |
| Averages | | | | | | | | | | | | |
| 1975–2017 | 401 | 316 | 481 | 431 | 168 | 134 | 1637 | 689 | 966 | 767 | 3,654 | 2,339 |
| 2008–2017 | 341 | 254 | 474 | 426 | 167 | 117 | 1,010 | 335 | 961 | 741 | 2,954 | 1,873 |

Notes: Data is provided beginning in the year salmon limited entry permits were first issued; this is 1975 for seine, drift gillnet, set gillnet, and power troll. Permits for hand troll were first issued in 1982. Permits issued and fished data from Commercial Fisheries Entry Commission

Data for 2018 are preliminary.

Table 3.—Southeast Alaska region commercial salmon harvest, in numbers, by harvest type and fishery, 2018.

| FISHERY | Chinook^a | Jacks^b | Sockeye | Coho | Pink | Chum | Total |
|---|----------------------------|--------------------------|----------------|-------------|-------------|-------------|--------------|
| Total Purse Seine | 16,139 | 613 | 230,931 | 154,176 | 6,850,978 | 4,985,011 | 12,237,848 |
| Southern Purse Seine Total ^c | 10,675 | 371 | 196,901 | 104,696 | 4,588,464 | 1,318,914 | 6,220,021 |
| Southern Purse Seine Traditional | 0 | 269 | 194,869 | 102,531 | 4,567,491 | 1,049,571 | 5,914,731 |
| S Purse Seine Hatchery Terminal | 10,675 | 102 | 2,032 | 2,165 | 20,973 | 269,343 | 305,290 |
| Northern Purse Seine Total ^d | 5,464 | 242 | 34,030 | 49,480 | 2,262,514 | 3,666,097 | 6,017,827 |
| Northern Purse Seine Traditional | 0 | 28 | 22,556 | 16,810 | 2,091,758 | 301,317 | 2,432,469 |
| N Purse Seine Hatchery Terminal | 5,464 | 214 | 11,474 | 32,670 | 170,756 | 3,364,780 | 3,585,358 |
| Total Drift Gillnet | 21,276 | 0 | 226,707 | 258,883 | 556,370 | 2,526,020 | 3,589,256 |
| Tree Point | 1,619 | 0 | 19,920 | 35,457 | 113,346 | 187,661 | 358,003 |
| Prince of Wales | 3,247 | 0 | 25,203 | 112,000 | 348,277 | 176,392 | 665,119 |
| Stikine | 2,649 | 0 | 5,731 | 8,823 | 15,643 | 133,812 | 166,658 |
| Taku-Snettisham | 739 | 0 | 68,122 | 35,608 | 23,183 | 517,104 | 644,756 |
| Lynn Canal | 1,067 | 0 | 73,184 | 45,493 | 16,018 | 703,602 | 839,364 |
| Drift Gillnet Hatchery Terminal | 11,955 | 0 | 34,547 | 21,502 | 39,903 | 807,449 | 915,356 |
| Set Gillnet | 295 | 0 | 7,175 | 95,640 | 28,114 | 132 | 131,356 |
| Total Troll | 99,698 | 0 | 5,186 | 938,271 | 53,584 | 530,597 | 1,627,336 |
| Hand Troll Total | 3,082 | 0 | 107 | 37,583 | 2,405 | 5,702 | 48,879 |
| Hand Troll Traditional | 2,148 | 0 | 104 | 37,044 | 2,249 | 4,207 | 45,752 |
| Hand Troll Hatchery Terminal | 314 | 0 | 1 | 523 | 156 | 1,182 | 2,176 |
| Hand Troll Spring Fishery | 620 | 0 | 2 | 16 | 0 | 313 | 951 |
| Power Troll Total | 96,616 | 0 | 5,079 | 900,688 | 51,179 | 524,895 | 1,578,457 |
| Power Troll Traditional | 89,155 | 0 | 5,033 | 899,140 | 41,520 | 410,909 | 1,445,757 |
| Power Troll Hatchery Terminal | 1,119 | 0 | 27 | 1,446 | 9,653 | 109,865 | 122,110 |
| Power Troll Spring Fishery | 6,342 | 0 | 19 | 102 | 6 | 4,121 | 10,590 |
| Total Annette Is. Reservation | 2,000 | 1 | 6,299 | 16,712 | 296,378 | 211,148 | 532,538 |
| Annette Island Purse Seine | 421 | 1 | 4,496 | 2,634 | 170,021 | 58,845 | 236,418 |
| Annette Island Drift Gillnet | 1,120 | 0 | 1,803 | 14,068 | 126,356 | 152,300 | 295,647 |
| Total Annette Island Troll | 459 | 0 | 0 | 10 | 1 | 3 | 473 |
| Annette Island Hand Troll | 0 | 0 | 0 | 0 | 0 | 0 | 0 |
| Annette Island Power Troll | 459 | 0 | 0 | 10 | 1 | 3 | 473 |
| Hatchery Cost Recovery | 20,060 | 0 | 158,537 | 136,604 | 293,654 | 3,202,405 | 3,811,260 |
| Miscellaneous^e | 204 | 0 | 2,055 | 2,797 | 16,742 | 16,442 | 38,240 |
| Southern Totals ^f | 70,209 | 372 | 255,680 | 623,375 | 5,398,004 | 2,916,092 | 9,263,732 |
| Northern Totals ^g | 87,863 | 242 | 374,001 | 859,170 | 2,669,702 | 8,555,482 | 12,546,460 |
| Yakutat ^h | 1,600 | 0 | 7,209 | 120,538 | 28,114 | 181 | 157,642 |
| Region Totals | 159,672 | 614 | 636,890 | 1,603,083 | 8,095,820 | 11,471,755 | 21,967,834 |

^a Harvest accounting period for the Chinook salmon season is from October 1, 2017, through September 30, 2018.

^b Jack Chinook salmon are ≤ 28 inches. Chinook salmon of < 28 inches may be retained and sold in the purse seine fishery, and Chinook of all sizes may be sold in the drift gillnet fishery. Jack fish ticket data were revised in 2012, for the years 2005–2012, to provide more accurate accounting of gillnet harvested Chinook salmon for Pacific Salmon Treaty (PST) accounting purposes. Chinook salmon in the drift gillnet fishery will be based on recording of all sizes as one category on fish tickets, and separate accounting of jacks for PST purposes will be based on port sampling data. The PST accounts for Large Chinook salmon, ≥ 28 inches overall length, as Treaty Chinook.

^c Southern Southeast Alaska includes Districts 101 to 108.

^d Northern Southeast Alaska includes Districts 109 to 114.

^e Includes salmon that were confiscated, caught in sport fish derbies, or commercial test fisheries, and sold.

^f Districts 101 to 108, 150, and 152 (troll fishery Oct. 1–Sept 30).

^g Districts 109 to 116, 154, 156, and 157 (troll fishery Oct. 1–Sept 30).

^h Districts 181, 182, 183, 185, 186, 189, 191, 192 (troll fishery Oct. 1–Sept 30).

Table 4.—Southeast Alaska region annual commercial total salmon harvest by harvest type, in numbers and percent, from 1988 to 2018.

| Year | Seine | % | Driftnet | % | Setnet | % | Troll ^a | % | Annette | % | Hatchery ^b | % | Misc. ^c | % | Total |
|-----------------|------------|------|-----------|------|---------|------|--------------------|------|-----------|------|-----------------------|------|--------------------|------|-------------|
| 1988 | 11,274,603 | 64% | 2,607,418 | 15% | 518,455 | 3% | 1,348,285 | 8% | 1,058,584 | 6% | 645,811 | 4% | 61,563 | <1% | 17,514,719 |
| 1989 | 54,320,898 | 82% | 4,450,699 | 7% | 580,479 | 1% | 3,511,698 | 5% | 2,691,297 | 4% | 444,565 | 1% | 41,733 | <1% | 66,041,369 |
| 1990 | 30,330,838 | 76% | 2,917,511 | 7% | 530,825 | 1% | 2,963,172 | 7% | 1,727,293 | 4% | 1,414,924 | 4% | 44,645 | <1% | 39,929,208 |
| 1991 | 62,191,634 | 88% | 2,803,393 | 4% | 404,417 | 1% | 2,447,041 | 3% | 1,127,702 | 2% | 1,811,164 | 3% | 68,797 | <1% | 70,854,148 |
| 1992 | 34,808,120 | 75% | 3,832,020 | 8% | 632,425 | 1% | 2,894,863 | 6% | 1,190,707 | 3% | 3,094,606 | 7% | 45,851 | <1% | 46,498,592 |
| 1993 | 60,196,878 | 83% | 3,946,447 | 5% | 598,618 | 1% | 4,075,696 | 6% | 1,725,815 | 2% | 1,727,084 | 2% | 49,886 | <1% | 72,320,424 |
| 1994 | 60,075,945 | 79% | 4,255,756 | 6% | 570,976 | 1% | 4,948,777 | 7% | 725,117 | 1% | 5,386,836 | 7% | 76,180 | <1% | 76,039,587 |
| 1995 | 51,650,711 | 80% | 4,885,907 | 8% | 514,753 | 1% | 2,907,372 | 5% | 2,165,624 | 3% | 2,374,544 | 4% | 53,726 | <1% | 64,552,637 |
| 1996 | 72,547,199 | 84% | 4,054,104 | 5% | 474,783 | 1% | 3,277,938 | 4% | 1,066,239 | 1% | 5,352,633 | 6% | 71,534 | <1% | 86,844,430 |
| 1997 | 32,418,643 | 71% | 3,861,436 | 8% | 530,584 | 1% | 2,313,468 | 5% | 649,343 | 1% | 5,655,779 | 12% | 91,387 | <1% | 45,520,640 |
| 1998 | 49,057,331 | 78% | 4,332,833 | 7% | 365,039 | 1% | 2,213,999 | 4% | 1,070,302 | 2% | 5,700,976 | 9% | 89,256 | <1% | 62,829,736 |
| 1999 | 81,768,382 | 84% | 4,347,194 | 4% | 351,396 | <1% | 3,039,972 | 3% | 1,068,721 | 1% | 7,053,481 | 7% | 139,129 | <1% | 97,768,275 |
| 2000 | 27,180,728 | 69% | 3,918,771 | 10% | 338,124 | 0.01 | 1,953,985 | 5% | 1,128,736 | 3% | 5,028,361 | 13% | 95,943 | <1% | 39,644,648 |
| 2001 | 67,965,608 | 84% | 4,141,301 | 5% | 382,060 | <1% | 2,734,661 | 3% | 2,224,126 | 3% | 3,854,849 | 5% | 88,160 | <1% | 81,390,765 |
| 2002 | 45,891,149 | 80% | 3,129,105 | 5% | 331,848 | 0.01 | 1,845,766 | 3% | 1,548,231 | 3% | 4,378,603 | 8% | 96,389 | <1% | 57,221,091 |
| 2003 | 55,331,699 | 81% | 3,926,654 | 6% | 281,529 | <1% | 2,004,826 | 3% | 674,026 | 1% | 5,759,988 | 8% | 93,598 | <1% | 68,072,320 |
| 2004 | 49,621,064 | 80% | 3,914,562 | 6% | 312,708 | 0.01 | 2,503,067 | 4% | 876,978 | 1% | 4,978,262 | 8% | 104,429 | <1% | 62,311,070 |
| 2005 | 59,823,736 | 85% | 3,832,649 | 5% | 223,835 | <1% | 2,670,355 | 4% | 706,778 | 1% | 3,264,074 | 5% | 146,956 | <1% | 70,668,383 |
| 2006 | 16,281,579 | 56% | 4,796,219 | 17% | 315,892 | 0.01 | 1,867,125 | 6% | 475,603 | 2% | 5,233,643 | 18% | 77,642 | <1% | 29,047,703 |
| 2007 | 46,461,718 | 79% | 4,176,973 | 7% | 405,180 | 1% | 1,947,109 | 3% | 1,092,752 | 2% | 4,340,585 | 7% | 204,904 | <1% | 58,629,221 |
| 2008 | 17,811,215 | 63% | 3,787,192 | 13% | 255,562 | 1% | 1,533,878 | 5% | 1,139,310 | 4% | 3,537,129 | 13% | 17,864 | <1% | 28,082,150 |
| 2009 | 39,070,600 | 76% | 4,051,167 | 8% | 318,993 | 1% | 2,182,554 | 4% | 1,951,852 | 4% | 3,975,060 | 8% | 41,431 | <1% | 51,591,657 |
| 2010 | 24,225,264 | 65% | 4,473,583 | 12% | 445,692 | 1% | 2,022,651 | 5% | 1,742,725 | 5% | 4,378,443 | 12% | 59,940 | <1% | 37,348,298 |
| 2011 | 58,827,114 | 80% | 5,229,724 | 7% | 500,818 | 1% | 2,760,759 | 4% | 1,255,465 | 2% | 5,081,084 | 7% | 63,685 | <1% | 73,718,649 |
| 2012 | 24,466,785 | 66% | 5,246,512 | 14% | 253,904 | 1% | 2,058,871 | 6% | 1,342,408 | 4% | 3,563,712 | 10% | 60,964 | <1% | 36,993,156 |
| 2013 | 95,415,053 | 85% | 6,018,624 | 5% | 396,575 | <1% | 4,285,439 | 4% | 2,823,494 | 3% | 3,433,823 | 3% | 80,963 | <1% | 112,453,971 |
| 2014 | 37,174,155 | 75% | 4,878,945 | 10% | 301,169 | 0.01 | 2,881,482 | 6% | 2,165,688 | 4% | 2,336,009 | 5% | 23,825 | <1% | 49,761,273 |
| 2015 | 38,274,679 | 75% | 5,396,585 | 11% | 282,196 | 1% | 2,200,625 | 4% | 1,544,035 | 3% | 2,990,176 | 6% | 143,981 | <1% | 50,832,277 |
| 2016 | 19,392,679 | 61% | 4,739,184 | 15% | 259,759 | 1% | 1,888,100 | 6% | 1,884,040 | 6% | 3,450,634 | 11% | 73,468 | <1% | 31,687,864 |
| 2017 | 36,674,989 | 73% | 5,046,429 | 10% | 355,300 | 1% | 2,743,528 | 5% | 1,177,403 | 2% | 4,006,267 | 8% | 112,519 | <1% | 50,116,435 |
| 2018 | 12,237,848 | 56% | 3,589,256 | 16% | 131,356 | 1% | 1,627,336 | 7% | 532,538 | 2% | 3,811,260 | 17% | 38,240 | <1% | 21,967,834 |
| Averages | | | | | | | | | | | | | | | |
| 1962–2017 | 32,249,413 | 76% | 3,149,199 | 9% | 349,607 | 1% | 2,035,195 | 6% | 1,013,676 | 2% | - | - | - | - | 40,948,552 |
| 2008–2017 | 39,133,253 | 72% | 4,886,795 | 11% | 336,997 | 1% | 2,455,789 | 5% | 1,702,642 | 4% | 3,675,234 | 8% | 67,864 | <1% | 52,258,573 |
| Harvest | | | | | | | | | | | | | | | |
| Max. & year | 95,415,053 | 2013 | 6,018,624 | 2013 | 632,425 | 1992 | 4,948,777 | 1994 | 2,823,494 | 2013 | 7,053,481 | 1999 | 204,904 | 2007 | |
| Min. & year | 3,929,881 | 1975 | 868,518 | 1975 | 131,356 | 2018 | 582,091 | 1975 | 30,866 | 1969 | 752 | 1980 | 6,931 | 1981 | |

^a Salmon harvest is reported by calendar year except for the troll fishery. Troll is reported by season (Oct. 1–Sept. 30) beginning October 1, 1979, for the 1980 season.

^b Includes salmon caught and sold in private, state, and federal hatchery fisheries and carcass sales.

^c Includes confiscations, commercial test fisheries, and sport derbies where fish were sold.

Table 5.—Southeast Alaska region annual commercial Chinook salmon harvest by harvest type, in numbers and percent, from 1988 to 2018.

| Year | Seine | % | Driftnet | % | Setnet | % | Troll | % | Annette I. | % | Hatchery | % | Misc. ^a | % | Total |
|-----------------|--------|------|----------|------|--------|------|---------|------|------------|------|----------|------|--------------------|------|---------|
| 1988 | 12,165 | 5% | 9,079 | 3% | 893 | <1% | 231,110 | 87% | 941 | <1% | 9,649 | 4% | 1044 | <1% | 264,881 |
| 1989 | 17,103 | 6% | 9,579 | 3% | 798 | <1% | 235,609 | 83% | 892 | <1% | 19,680 | 7% | 1,275 | <1% | 284,936 |
| 1990 | 14,777 | 4% | 14,693 | 4% | 663 | <1% | 287,100 | 83% | 1840 | 0.01 | 26,692 | 8% | 390 | <1% | 346,155 |
| 1991 | 17,107 | 5% | 18,457 | 6% | 1747 | 0.01 | 263,153 | 79% | 4,015 | 1% | 25,995 | 8% | 703 | <1% | 331,177 |
| 1992 | 20,320 | 9% | 11,285 | 5% | 2,025 | 1% | 183,353 | 78% | 1,210 | 1% | 16,723 | 7% | 1369 | 0.01 | 236,285 |
| 1993 | 12,291 | 4% | 18,011 | 6% | 1,311 | <1% | 226,561 | 80% | 639 | <1% | 23,246 | 8% | 2,749 | 1% | 284,808 |
| 1994 | 21,089 | 9% | 16,735 | 7% | 3,820 | 0.02 | 186,299 | 75% | 230 | <1% | 17,750 | 7% | 1,513 | 1% | 247,436 |
| 1995 | 26,777 | 12% | 13,342 | 6% | 9,374 | 4% | 138,117 | 63% | 133 | <1% | 31,405 | 14% | 1,281 | 1% | 220,429 |
| 1996 | 23,155 | 11% | 9,982 | 5% | 4,854 | 2% | 141,447 | 66% | 243 | <1% | 33,496 | 16% | 1,410 | 1% | 214,587 |
| 1997 | 10,841 | 4% | 11,006 | 4% | 3,264 | 1% | 246,402 | 81% | 505 | <1% | 30,144 | 10% | 2,294 | 1% | 304,456 |
| 1998 | 16,167 | 7% | 5,937 | 3% | 2,804 | 1% | 192,066 | 82% | 304 | <1% | 15,943 | 7% | 1,390 | 1% | 234,611 |
| 1999 | 20,849 | 11% | 8,983 | 5% | 5,108 | 3% | 146,218 | 74% | 744 | <1% | 15,100 | 8% | 1,093 | 1% | 198,095 |
| 2000 | 22,044 | 9% | 13,475 | 6% | 2,460 | 1% | 158,791 | 68% | 4769 | 0.02 | 31,637 | 14% | 719 | <1% | 233,895 |
| 2001 | 22,314 | 9% | 13,644 | 6% | 2,631 | 1% | 153,280 | 62% | 4,156 | 2% | 49,028 | 20% | 776 | <1% | 245,829 |
| 2002 | 18,725 | 5% | 10,216 | 3% | 2,510 | 1% | 325,368 | 84% | 1,818 | <1% | 28,445 | 7% | 819 | <1% | 387,901 |
| 2003 | 25,236 | 6% | 10,704 | 3% | 3,842 | 1% | 330,719 | 79% | 780 | <1% | 45,723 | 11% | 868 | <1% | 417,872 |
| 2004 | 39,984 | 8% | 20,148 | 4% | 2,734 | 1% | 354,607 | 73% | 1914 | <1% | 62,470 | 13% | 2170 | <1% | 484,027 |
| 2005 | 20,421 | 5% | 55,754 | 12% | 766 | <1% | 338,024 | 75% | 1,697 | <1% | 29,408 | 7% | 1,922 | <1% | 447,992 |
| 2006 | 25,970 | 7% | 47,202 | 13% | 1208 | <1% | 282,258 | 76% | 806 | <1% | 12,794 | 3% | 1,403 | <1% | 371,641 |
| 2007 | 28,398 | 8% | 30,067 | 8% | 1,562 | <1% | 267,986 | 75% | 1232 | <1% | 28,167 | 8% | 1,817 | 0.01 | 359,229 |
| 2008 | 16,018 | 7% | 32,044 | 13% | 850 | <1% | 151,852 | 62% | 743 | <1% | 41,799 | 17% | 931 | <1% | 244,237 |
| 2009 | 29,888 | 11% | 25,221 | 9% | 1533 | 0.01 | 175,335 | 65% | 1033 | <1% | 35,107 | 13% | 516 | <1% | 268,633 |
| 2010 | 16,706 | 6% | 19,363 | 7% | 501 | <1% | 195,488 | 75% | 943 | <1% | 28,135 | 11% | 530 | <1% | 261,666 |
| 2011 | 27,770 | 8% | 31,010 | 9% | 1123 | <1% | 242,560 | 70% | 1705 | <1% | 41,301 | 12% | 976 | <1% | 346,445 |
| 2012 | 21,713 | 8% | 26,243 | 9% | 942 | <1% | 209,061 | 75% | 1,623 | 0.01 | 18,809 | 7% | 1582 | 0.01 | 279,973 |
| 2013 | 24,516 | 10% | 34,525 | 14% | 1401 | 0.01 | 149,485 | 62% | 1,453 | 1% | 30,665 | 13% | 144 | <1% | 242,189 |
| 2014 | 28,290 | 7% | 27,877 | 7% | 1,403 | <1% | 355,426 | 83% | 1,418 | <1% | 13,148 | 3% | 767 | <1% | 428,329 |
| 2015 | 30,067 | 9% | 29,267 | 8% | 934 | <1% | 269,811 | 77% | 2,190 | 0.01 | 17,521 | 5% | 1010 | <1% | 350,800 |
| 2016 | 27,558 | 8% | 20,701 | 6% | 343 | <1% | 276,043 | 82% | 1,731 | 1% | 9,136 | 3% | 905 | <1% | 336,417 |
| 2017 | 11,344 | 7% | 17,051 | 10% | 946 | 0.01 | 129,237 | 74% | 1,985 | 1% | 12,725 | 7% | 447 | <1% | 173,735 |
| 2018 | 16,752 | 10% | 21,276 | 13% | 295 | <1% | 99,698 | 62% | 2,001 | 1% | 20,060 | 13% | 204 | <1% | 160,286 |
| Averages | | | | | | | | | | | | | | | |
| 1962-2017 | 16,836 | 6% | 16,237 | 5% | 2,045 | 1% | 249,670 | 83% | 857 | <1% | - | - | - | - | 300,837 |
| 2008-2017 | 23,387 | 8% | 26,330 | 9% | 998 | <1% | 215,430 | 73% | 1,482 | 0.01 | 24,835 | 9% | 781 | <1% | 293,242 |
| Harvest | | | | | | | | | | | | | | | |
| Max. & year | 39,984 | 2004 | 55,754 | 2005 | 9,374 | 1995 | 375,427 | 1978 | 4,769 | 2000 | 62,470 | 2004 | 2,749 | 1993 | |
| Min. & year | 1,428 | 1976 | 4,598 | 1983 | 295 | 2018 | 99,698 | 2018 | 3 | 1966 | 937 | 1984 | 6 | 1983 | |

Note: Chinook salmon harvest is reported by season (Oct. 1–Sept. 30) beginning October 1, 1979, for the 1980 season.

^a Includes confiscations, test fisheries, and sanctioned sport derbies where fish were sold.

Table 6.—Southeast Alaska region annual commercial total sockeye salmon harvest by harvest type, in numbers and percent, from 1988 to 2018.

| Year | Seine | % | Driftnet | % | Setnet | % | Troll | % | Annette I. | % | Hatchery | % | Misc. ^a | % | Total |
|-----------------|-----------|------|-----------|------|---------|------|--------|------|------------|------|----------|-------|--------------------|------|-----------|
| 1988 | 654,748 | 45% | 600,925 | 41% | 162,168 | 11% | 9,339 | 1% | 30,979 | 2% | 85 | <1% | 2,173 | <1% | 1,460,417 |
| 1989 | 823,185 | 39% | 893,976 | 42% | 329,454 | 16% | 20,173 | 1% | 50,496 | 2% | 66 | <1% | 7,490 | <1% | 2,124,840 |
| 1990 | 965,918 | 45% | 767,492 | 36% | 344,606 | 16% | 9,175 | <1% | 59,644 | 3% | 75 | <1% | 8,806 | <1% | 2,155,716 |
| 1991 | 1,051,269 | 51% | 711,874 | 34% | 229,903 | 11% | 9,806 | <1% | 45,130 | 2% | 1478 | <1% | 14,126 | <1% | 2,063,586 |
| 1992 | 1,336,889 | 50% | 922,069 | 35% | 314,175 | 12% | 22,854 | 1% | 61,169 | 2% | 2,108 | <1% | 7,158 | <1% | 2,666,422 |
| 1993 | 1,690,471 | 53% | 1,021,899 | 32% | 345,887 | 11% | 25,337 | 1% | 95,063 | 3% | 7,545 | <1% | 4,758 | <1% | 3,190,960 |
| 1994 | 1,430,610 | 60% | 686,792 | 29% | 206,760 | 9% | 21,777 | 1% | 41,615 | 2% | 3,322 | <1% | 1,613 | <1% | 2,392,489 |
| 1995 | 907,120 | 51% | 640,971 | 36% | 153,723 | 9% | 27,323 | 2% | 55,503 | 3% | 8,448 | <1% | 2,243 | <1% | 1,795,331 |
| 1996 | 1,514,523 | 54% | 1,026,591 | 37% | 209,029 | 7% | 11,024 | <1% | 29,859 | 1% | 6,636 | <1% | 2,186 | <1% | 2,799,848 |
| 1997 | 1,578,021 | 64% | 645,516 | 26% | 110,078 | 4% | 39,428 | 2% | 41,365 | 2% | 58,879 | 2% | 4,107 | <1% | 2,477,394 |
| 1998 | 732,790 | 53% | 501,291 | 36% | 77,189 | 6% | 6,476 | <1% | 16,554 | 1% | 34,590 | 3% | 6,468 | <1% | 1,375,358 |
| 1999 | 425,298 | 37% | 545,681 | 47% | 128,751 | 11% | 5,730 | <1% | 21,867 | 2% | 24,075 | 2% | 9,328 | <1% | 1,160,730 |
| 2000 | 489,257 | 40% | 496,614 | 40% | 99,182 | 8% | 4,467 | <1% | 22,529 | 2% | 107,244 | 9% | 10,097 | <1% | 1,229,390 |
| 2001 | 1,013,151 | 50% | 687,476 | 34% | 141,449 | 7% | 8,992 | <1% | 41,245 | 2% | 138,233 | 7% | 4,684 | <1% | 2,035,230 |
| 2002 | 154,478 | 19% | 464,138 | 58% | 112,656 | 14% | 1,247 | <1% | 34,821 | 4% | 36,859 | 5% | 2,248 | <1% | 806,447 |
| 2003 | 681,418 | 45% | 598,679 | 39% | 154,384 | 10% | 4,596 | <1% | 7,806 | 1% | 75,869 | 5% | 2,604 | <1% | 1,525,356 |
| 2004 | 900,557 | 44% | 798,096 | 39% | 88,282 | 4% | 5,009 | <1% | 30,743 | 2% | 210,665 | 10% | 4,393 | <1% | 2,037,745 |
| 2005 | 898,515 | 56% | 462,209 | 29% | 79,221 | 5% | 13,277 | 1% | 13,285 | 1% | 140,245 | 9% | 1,083 | <1% | 1,607,835 |
| 2006 | 413,938 | 31% | 625,667 | 47% | 138,510 | 10% | 8,084 | 1% | 20,908 | 2% | 124,109 | 9% | 2,280 | <1% | 1,333,496 |
| 2007 | 1,063,704 | 56% | 501,765 | 26% | 236,289 | 12% | 6,439 | <1% | 19,579 | 1% | 74,419 | 4% | 2,607 | <1% | 1,904,802 |
| 2008 | 74,389 | 17% | 264,877 | 61% | 35,227 | 8% | 1,253 | <1% | 5,770 | 1% | 53,981 | 12% | 805 | <1% | 436,302 |
| 2009 | 307,436 | 33% | 408,336 | 44% | 105,825 | 11% | 2,929 | <1% | 15,036 | 2% | 85,049 | 9% | 1,138 | <1% | 925,749 |
| 2010 | 151,430 | 21% | 391,225 | 54% | 122,022 | 17% | 1,923 | <1% | 14,769 | 2% | 38,334 | 5% | 1,192 | <1% | 720,895 |
| 2011 | 499,289 | 40% | 517,994 | 42% | 167,704 | 13% | 5,190 | <1% | 29,329 | 2% | 22,001 | 2% | 938 | <1% | 1,242,445 |
| 2012 | 170,345 | 18% | 498,318 | 53% | 124,780 | 13% | 3,231 | <1% | 22,091 | 2% | 125,664 | 13% | 2,790 | <1% | 947,219 |
| 2013 | 282,350 | 29% | 456,014 | 47% | 168,356 | 17% | 5,019 | 1% | 10,901 | 1% | 49,609 | 5% | 2,416 | <1% | 974,665 |
| 2014 | 900,955 | 54% | 497,968 | 30% | 116,435 | 7% | 7,289 | <1% | 21,675 | 1% | 123,029 | 7% | 2,581 | <1% | 1,669,932 |
| 2015 | 908,663 | 59% | 389,979 | 26% | 82,748 | 5% | 6,977 | <1% | 26,633 | 2% | 111,381 | 7% | 2,393 | <1% | 1,528,774 |
| 2016 | 610,532 | 41% | 622,390 | 41% | 93,052 | 6% | 6,699 | <1% | 22,185 | 1% | 148,032 | 10% | 3,094 | <1% | 1,505,984 |
| 2017 | 287,857 | 36% | 239,367 | 30% | 120,665 | 15% | 5,454 | 1% | 11,275 | 1% | 135,018 | 17% | 1,737 | <1% | 801,373 |
| 2018 | 230,931 | 36% | 226,707 | 36% | 7,175 | 1% | 5,186 | 1% | 6,299 | 1% | 158,537 | 25% | 2,055 | <1% | 636,890 |
| Averages | | | | | | | | | | | | | | | |
| 1962–2017 | 602,205 | 42% | 513,638 | 40% | 148,454 | 12% | 7,009 | <1% | 26,335 | 2% | - | - | - | - | 1,334,937 |
| 2008–2017 | 419,325 | 35% | 428,647 | 43% | 113,681 | 11% | 4,596 | <1% | 17,966 | 2% | 89,210 | 9% | 1,908 | <1% | 1,075,334 |
| Harvest | | | | | | | | | | | | | | | |
| Max. & year | 1,690,471 | 1993 | 1,026,591 | 1996 | 345,887 | 1993 | 39,428 | 1997 | 95,063 | 1993 | 210,665 | 2,004 | 14,126 | 1991 | |
| Min. & year | 61,784 | 1975 | 108,574 | 1975 | 7,175 | 2018 | 157 | 1967 | 622 | 1975 | 1 | 1981 | 178 | 1981 | |

^a Includes confiscations, commercial test fisheries, and sport derbies where fish were sold.

Table 7.—Southeast Alaska region annual commercial total coho salmon harvest by harvest type, in numbers and percent, from 1988 to 2018.

| Year | Seine | % | Driftnet | % | Setnet | % | Troll | % | Annette I. | % | Hatchery | % | Misc. ^a | % | Total |
|-----------------|---------|------|----------|------|---------|------|-----------|------|------------|------|----------|------|--------------------|------|-----------|
| 1988 | 157,003 | 15% | 163,808 | 16% | 205,926 | 20% | 500,208 | 48% | 8,681 | 1% | 7,539 | 1% | 3,503 | <1% | 1,046,668 |
| 1989 | 330,989 | 15% | 234,423 | 11% | 176,773 | 8% | 1,415,517 | 64% | 23,870 | 1% | 18,921 | 1% | 3,551 | <1% | 2,204,044 |
| 1990 | 372,471 | 13% | 351,039 | 12% | 148,891 | 5% | 1,832,414 | 64% | 35,104 | 1% | 125,762 | 4% | 2,536 | <1% | 2,868,217 |
| 1991 | 405,592 | 13% | 545,376 | 17% | 166,731 | 5% | 1,718,318 | 54% | 63,146 | 2% | 294,490 | 9% | 3,350 | <1% | 3,197,003 |
| 1992 | 488,399 | 13% | 645,159 | 17% | 290,095 | 8% | 1,929,832 | 52% | 71,282 | 2% | 268,913 | 7% | 2,529 | <1% | 3,696,209 |
| 1993 | 473,138 | 13% | 417,681 | 11% | 237,446 | 6% | 2,395,874 | 65% | 32,690 | 1% | 106,476 | 3% | 2,130 | <1% | 3,665,435 |
| 1994 | 967,691 | 17% | 698,125 | 12% | 343,843 | 6% | 3,467,541 | 61% | 48,900 | 1% | 188,847 | 3% | 6,753 | <1% | 5,721,700 |
| 1995 | 617,777 | 18% | 415,158 | 12% | 295,030 | 9% | 1,750,167 | 52% | 51,452 | 2% | 215,431 | 6% | 663 | <1% | 3,345,678 |
| 1996 | 441,457 | 14% | 368,570 | 12% | 227,802 | 7% | 1,906,312 | 60% | 42,044 | 1% | 166,941 | 5% | 3825 | <1% | 3,156,951 |
| 1997 | 183,693 | 9% | 131,240 | 7% | 322,776 | 16% | 1,170,288 | 59% | 30,846 | 2% | 135,179 | 7% | 405 | <1% | 1,974,427 |
| 1998 | 464,716 | 16% | 412,446 | 14% | 197,629 | 7% | 1,636,711 | 55% | 39,467 | 1% | 234,675 | 8% | 3436 | <1% | 2,989,080 |
| 1999 | 416,415 | 11% | 351,598 | 10% | 187,055 | 5% | 2,272,461 | 63% | 49,365 | 1% | 349,200 | 10% | 4,140 | <1% | 3,630,234 |
| 2000 | 206,479 | 11% | 167,623 | 9% | 170,948 | 9% | 1,125,219 | 57% | 18,189 | 1% | 268,171 | 14% | 399 | <1% | 1,957,028 |
| 2001 | 542,643 | 16% | 294,441 | 9% | 205,344 | 6% | 1,845,609 | 56% | 57,055 | 2% | 352,904 | 11% | 2936 | <1% | 3,300,932 |
| 2002 | 469,680 | 14% | 436,612 | 13% | 200,888 | 6% | 1,315,080 | 41% | 64,880 | 2% | 749,889 | 23% | 5,487 | <1% | 3,242,516 |
| 2003 | 394,168 | 16% | 434,234 | 17% | 74,343 | 3% | 1,223,458 | 49% | 39,879 | 2% | 328,650 | 13% | 3,643 | <1% | 2,498,375 |
| 2004 | 399,267 | 13% | 316,192 | 10% | 196,930 | 6% | 1,914,945 | 62% | 30,883 | 1% | 221,721 | 7% | 4,725 | <1% | 3,084,663 |
| 2005 | 341,295 | 11% | 272,873 | 9% | 82,887 | 3% | 2,034,874 | 68% | 35,204 | 1% | 231,341 | 8% | 4,310 | <1% | 3,002,784 |
| 2006 | 109,498 | 5% | 252,449 | 12% | 86,085 | 4% | 1,362,915 | 65% | 30,287 | 1% | 246,062 | 12% | 4,579 | <1% | 2,091,875 |
| 2007 | 247,568 | 12% | 175,286 | 8% | 76,550 | 4% | 1,376,679 | 67% | 35,185 | 2% | 146,797 | 7% | 4,578 | <1% | 2,062,643 |
| 2008 | 208,196 | 9% | 337,447 | 14% | 153,712 | 6% | 1,291,821 | 54% | 48,632 | 2% | 340,538 | 14% | 1,127 | <1% | 2,381,473 |
| 2009 | 283,431 | 11% | 320,910 | 12% | 133,808 | 5% | 1,585,703 | 60% | 51,495 | 2% | 259,997 | 10% | 138 | <1% | 2,635,482 |
| 2010 | 193,221 | 7% | 505,278 | 20% | 161,460 | 6% | 1,342,919 | 52% | 85,055 | 3% | 299,129 | 12% | 499 | <1% | 2,587,561 |
| 2011 | 347,132 | 15% | 237,976 | 10% | 125,830 | 5% | 1,313,888 | 57% | 53,336 | 2% | 232,531 | 10% | 639 | <1% | 2,311,332 |
| 2012 | 275,426 | 13% | 265,357 | 13% | 98,677 | 5% | 1,201,520 | 58% | 42,468 | 2% | 201,044 | 10% | 2229 | <1% | 2,086,721 |
| 2013 | 545,667 | 14% | 441,552 | 11% | 158,046 | 4% | 2,392,138 | 62% | 50,477 | 1% | 285,491 | 7% | 3,774 | <1% | 3,877,145 |
| 2014 | 388,692 | 10% | 554,301 | 15% | 161,977 | 4% | 2,243,782 | 59% | 51,275 | 1% | 387,988 | 10% | 1,604 | <1% | 3,789,619 |
| 2015 | 284,301 | 13% | 251,058 | 12% | 129,069 | 6% | 1,240,195 | 57% | 34,100 | 2% | 221,087 | 10% | 4,133 | <1% | 2,163,943 |
| 2016 | 257,065 | 11% | 263,968 | 11% | 144,032 | 6% | 1,387,055 | 59% | 45,823 | 2% | 231,478 | 10% | 2,779 | <1% | 2,332,200 |
| 2017 | 270,043 | 9% | 158,620 | 6% | 140,844 | 5% | 2,150,880 | 75% | 35,862 | 1% | 122,289 | 4% | 4,404 | <1% | 2,882,942 |
| 2018 | 154,176 | 10% | 258,883 | 16% | 95,640 | 6% | 938,271 | 59% | 16,712 | 1% | 136,604 | 9% | 2,797 | <1% | 1,603,083 |
| Averages | | | | | | | | | | | | | | | |
| 1962–2017 | 331,053 | 17% | 265,535 | 13% | 141,573 | 7% | 1,275,100 | 58% | 28,269 | 1% | - | - | - | - | 2,177,590 |
| 2008–2017 | 305,317 | 11% | 333,647 | 12% | 140,746 | 5% | 1,614,990 | 59% | 49,852 | 2% | 258,157 | 10% | 2,133 | <1% | 2,704,842 |
| Harvest | | | | | | | | | | | | | | | |
| Max. & year | 967,691 | 1994 | 698,125 | 1994 | 343,843 | 1994 | 3,467,541 | 1994 | 85,055 | 2010 | 749,889 | 2002 | 6,753 | 1994 | |
| Min. & year | 70,193 | 1975 | 65,101 | 1969 | 30,279 | 1970 | 214,219 | 1975 | 324 | 1973 | 4,220 | 1983 | 23 | 1980 | |

^a Includes confiscations, commercial test fisheries, and sport derbies where fish were sold.

Table 8.—Southeast Alaska region annual commercial total pink salmon harvest by harvest type, in numbers and percent, from 1988 to 2018.

| Year | Seine | % | Driftnet | % | Setnet | % | Troll | % | Annette I. | % | Hatchery | % | Misc. ^a | % | Total |
|-----------------|------------|------|-----------|------|---------|------|-----------|------|------------|------|-----------|------|--------------------|------|------------|
| 1988 | 8,825,252 | 79% | 688,750 | 6% | 120,212 | 0.01 | 519,367 | 5% | 890,272 | 8% | 115,729 | 1% | 47,580 | <1% | 11,207,162 |
| 1989 | 52,070,066 | 88% | 2,769,875 | 5% | 57,195 | <1% | 1,771,409 | 3% | 2,550,624 | 4% | 213,371 | <1% | 27,663 | <1% | 59,460,203 |
| 1990 | 27,915,150 | 86% | 1,168,061 | 4% | 30,840 | <1% | 771,665 | 2% | 1,546,186 | 5% | 880,750 | 3% | 29,350 | <1% | 32,342,002 |
| 1991 | 58,592,358 | 95% | 820,409 | 1% | 3,052 | <1% | 427,326 | 1% | 933,309 | 2% | 1,112,888 | 2% | 36,997 | <1% | 61,926,339 |
| 1992 | 29,769,079 | 85% | 1,408,331 | 4% | 18,526 | <1% | 673,795 | 2% | 954,756 | 3% | 2,111,411 | 6% | 27,400 | <1% | 34,963,298 |
| 1993 | 53,414,515 | 93% | 1,087,670 | 2% | 9,909 | <1% | 902,766 | 2% | 1,521,934 | 3% | 332,763 | 1% | 29,793 | <1% | 57,299,350 |
| 1994 | 51,280,083 | 90% | 1,030,607 | 2% | 12,324 | <1% | 942,783 | 2% | 498,031 | 1% | 3,459,436 | 6% | 51,613 | <1% | 57,274,877 |
| 1995 | 43,498,508 | 91% | 1,337,764 | 3% | 54,041 | <1% | 714,312 | 1% | 1,925,156 | 4% | 411,701 | 1% | 24,024 | <1% | 47,965,506 |
| 1996 | 61,649,487 | 95% | 615,311 | 1% | 31,295 | <1% | 812,899 | 1% | 867,799 | 1% | 609,316 | 1% | 43,607 | <1% | 64,629,714 |
| 1997 | 24,782,485 | 86% | 1,384,200 | 5% | 93,658 | <1% | 545,308 | 2% | 410,054 | 1% | 1,695,171 | 6% | 64,348 | <1% | 28,975,224 |
| 1998 | 38,436,679 | 90% | 1,489,395 | 4% | 86,066 | <1% | 261,104 | 1% | 799,296 | 2% | 1,411,511 | 3% | 51,351 | <1% | 42,535,402 |
| 1999 | 71,961,636 | 92% | 1,274,672 | 2% | 29,554 | <1% | 540,859 | 1% | 896,414 | 1% | 3,053,220 | 4% | 91,929 | <1% | 77,848,284 |
| 2000 | 18,156,691 | 89% | 679,452 | 3% | 64,349 | <1% | 187,364 | 1% | 918,280 | 5% | 267,913 | 1% | 39,377 | <1% | 20,313,426 |
| 2001 | 61,951,322 | 92% | 1,568,859 | 2% | 32,230 | <1% | 258,943 | <1% | 1,995,215 | 3% | 1,189,294 | 2% | 60,128 | <1% | 67,055,991 |
| 2002 | 42,137,936 | 93% | 802,290 | 2% | 15,590 | <1% | 86,399 | <1% | 1,363,274 | 3% | 853,059 | 2% | 72,459 | <1% | 45,331,007 |
| 2003 | 49,894,749 | 95% | 1,354,839 | 3% | 48,418 | <1% | 159,643 | <1% | 569,512 | 1% | 420,141 | 1% | 68,330 | <1% | 52,515,632 |
| 2004 | 42,596,809 | 94% | 944,447 | 2% | 23,207 | <1% | 57,199 | <1% | 715,774 | 2% | 933,287 | 2% | 62,289 | <1% | 45,333,012 |
| 2005 | 55,746,479 | 94% | 1,530,243 | 3% | 60,436 | <1% | 109,584 | <1% | 598,105 | 1% | 1,004,250 | 2% | 133,145 | <1% | 59,182,242 |
| 2006 | 10,117,941 | 87% | 744,048 | 6% | 88,864 | 0.01 | 60,323 | 0.01 | 263,420 | 2% | 377,353 | 3% | 43,462 | <1% | 11,695,411 |
| 2007 | 42,078,209 | 94% | 984,250 | 2% | 87,997 | <1% | 104,325 | <1% | 846,271 | 2% | 606,443 | 1% | 177,245 | <1% | 44,884,740 |
| 2008 | 14,297,381 | 90% | 560,612 | 4% | 65,227 | <1% | 28,123 | <1% | 926,190 | 6% | 83,099 | 1% | 6,418 | <1% | 15,967,050 |
| 2009 | 34,946,847 | 92% | 566,734 | 1% | 76,956 | <1% | 75,722 | <1% | 1,725,651 | 5% | 682,266 | 2% | 27,254 | <1% | 38,101,430 |
| 2010 | 20,630,072 | 85% | 1,337,098 | 6% | 160,470 | 0.01 | 87,625 | <1% | 1,327,540 | 5% | 713,810 | 3% | 46,712 | <1% | 24,303,327 |
| 2011 | 55,251,280 | 94% | 1,641,100 | 3% | 205,261 | <1% | 496,220 | 0.01 | 740,510 | 1% | 698,067 | 1% | 55,849 | <1% | 59,088,287 |
| 2012 | 19,172,555 | 90% | 938,892 | 4% | 27,343 | <1% | 168,539 | 1% | 807,922 | 4% | 153,194 | 1% | 35,945 | <1% | 21,304,390 |
| 2013 | 88,764,579 | 94% | 1,664,045 | 2% | 67,344 | <1% | 684,532 | 1% | 2,578,174 | 3% | 968,118 | 1% | 60,148 | <1% | 94,786,940 |
| 2014 | 33,471,883 | 90% | 1,417,432 | 4% | 20,733 | <1% | 75,278 | <1% | 1,961,842 | 5% | 236,214 | 1% | 10,364 | <1% | 37,193,746 |
| 2015 | 32,224,601 | 92% | 1,374,363 | 4% | 68,785 | <1% | 259,411 | 0.01 | 776,981 | 2% | 333,233 | 1% | 124,052 | <1% | 35,161,426 |
| 2016 | 15,388,943 | 84% | 1,152,890 | 6% | 21,778 | <1% | 53,359 | <1% | 1,418,243 | 8% | 330,519 | 2% | 30,265 | <1% | 18,395,997 |
| 2017 | 32,061,417 | 92% | 1,019,501 | 3% | 91,933 | <1% | 54,469 | <1% | 879,193 | 3% | 641,437 | 2% | 78,591 | <1% | 34,826,541 |
| 2018 | 6,850,978 | 85% | 556,370 | 7% | 28,114 | <1% | 53,584 | 0.01 | 296,378 | 4% | 293,654 | 4% | 16,742 | <1% | 8,095,820 |
| Averages | | | | | | | | | | | | | | | |
| 1962–2017 | 28,298,903 | 89% | 1,011,575 | 5% | 51,256 | <1% | 342,862 | 1% | 884,039 | 3% | - | - | - | - | 31,118,335 |
| 2008–2017 | 34,620,956 | 90% | 1,167,267 | 4% | 80,583 | <1% | 198,328 | <1% | 1,314,225 | 4% | 483,996 | 2% | 47,560 | <1% | 37,912,913 |
| Harvest | | | | | | | | | | | | | | | |
| Max. & year | 88,764,579 | 2013 | 2,769,875 | 1989 | 205,261 | 2011 | 1,771,409 | 1989 | 2,578,174 | 2013 | 3,459,436 | 1994 | 177,245 | 2007 | |
| Min. & year | 2,807,759 | 1967 | 205,683 | 1967 | 1,405 | 1966 | 28,123 | 2008 | 6,949 | 1967 | 7,346 | 1982 | 4,002 | 1982 | |

^a Includes confiscations, commercial test fisheries, and sport derbies where fish were sold.

Table 9.—Southeast Alaska region annual commercial total chum salmon harvest by harvest type, in numbers and percent, from 1988 to 2018.

| Year | Seine | % | Driftnet | % | Setnet | % | Troll | % | Annette I. | % | Hatchery | % | Misc. ^a | % | Total |
|-----------------|-----------|------|-----------|------|--------|------|-----------|------|------------|------|-----------|------|--------------------|------|------------|
| 1988 | 1,625,435 | 46% | 1,144,856 | 32% | 29,256 | 1% | 88,261 | 0.02 | 127,711 | 4% | 512,809 | 15% | 7,263 | <1% | 3,535,591 |
| 1989 | 1,079,555 | 55% | 542,846 | 28% | 16,259 | 1% | 68,990 | 4% | 65,415 | 3% | 192,527 | 10% | 3,302 | <1% | 1,968,894 |
| 1990 | 1,062,522 | 48% | 616,226 | 28% | 5,825 | <1% | 62,818 | 3% | 84,519 | 4% | 381,645 | 17% | 4,340 | <1% | 2,217,895 |
| 1991 | 2,125,308 | 64% | 707,277 | 21% | 2,984 | <1% | 28,438 | 1% | 82,102 | 2% | 376,313 | 11% | 13,621 | <1% | 3,336,043 |
| 1992 | 3,193,433 | 65% | 845,176 | 17% | 7,604 | <1% | 85,029 | 2% | 102,290 | 2% | 695,451 | 14% | 7,532 | <1% | 4,936,515 |
| 1993 | 4,606,463 | 58% | 1,401,186 | 18% | 4,065 | <1% | 525,158 | 7% | 75,489 | 1% | 1,256,796 | 16% | 10,711 | <1% | 7,879,868 |
| 1994 | 6,376,472 | 61% | 1,823,497 | 18% | 4,229 | <1% | 330,377 | 3% | 136,341 | 1% | 1,717,481 | 17% | 14,688 | <1% | 10,403,085 |
| 1995 | 6,600,529 | 59% | 2,478,672 | 22% | 2,585 | <1% | 277,453 | 2% | 133,380 | 1% | 1,707,559 | 15% | 25,515 | <1% | 11,225,693 |
| 1996 | 8,918,577 | 56% | 2,033,650 | 13% | 1,803 | <1% | 406,256 | 3% | 126,294 | 1% | 4,536,244 | 28% | 20,506 | <1% | 16,043,330 |
| 1997 | 5,863,603 | 50% | 1,689,474 | 14% | 808 | <1% | 312,042 | 3% | 166,573 | 1% | 3,736,406 | 32% | 20,233 | <1% | 11,789,139 |
| 1998 | 9,406,979 | 60% | 1,923,764 | 12% | 1351 | <1% | 117,642 | 1% | 214,681 | 1% | 4,004,257 | 26% | 26,611 | <1% | 15,695,285 |
| 1999 | 8,944,184 | 60% | 2,166,260 | 15% | 928 | <1% | 74,704 | 1% | 100,331 | 1% | 3,611,886 | 24% | 32,639 | <1% | 14,930,932 |
| 2000 | 8,306,257 | 52% | 2,561,607 | 16% | 1185 | <1% | 478,144 | 3% | 164,969 | 1% | 4,353,396 | 27% | 45,351 | <1% | 15,910,909 |
| 2001 | 4,436,178 | 51% | 1,576,881 | 18% | 406 | <1% | 467,837 | 5% | 126,455 | 1% | 2,125,390 | 24% | 21,269 | <1% | 8,754,416 |
| 2002 | 3,110,330 | 42% | 1,415,849 | 19% | 204 | <1% | 117,672 | 2% | 83,438 | 1% | 2,710,351 | 36% | 17,163 | <1% | 7,455,007 |
| 2003 | 4,336,128 | 39% | 1,528,198 | 14% | 542 | <1% | 286,410 | 3% | 56,049 | 1% | 4,889,605 | 44% | 18,153 | <1% | 11,115,085 |
| 2004 | 5,684,447 | 50% | 1,835,679 | 16% | 1555 | <1% | 171,307 | 2% | 97,664 | 1% | 3,550,119 | 31% | 30,852 | <1% | 11,371,623 |
| 2005 | 2,817,026 | 44% | 1,511,570 | 24% | 525 | <1% | 174,596 | 3% | 58,487 | 1% | 1,858,830 | 29% | 6,496 | <1% | 6,427,530 |
| 2006 | 5,614,232 | 41% | 3,126,853 | 23% | 1225 | <1% | 153,545 | 1% | 160,182 | 1% | 4,473,325 | 33% | 25,918 | <1% | 13,555,280 |
| 2007 | 3,043,839 | 32% | 2,485,605 | 26% | 2,782 | <1% | 191,680 | 2% | 190,485 | 2% | 3,484,759 | 37% | 18,657 | <1% | 9,417,807 |
| 2008 | 3,215,231 | 36% | 2,592,212 | 29% | 546 | <1% | 60,829 | 1% | 157,975 | 2% | 3,017,712 | 33% | 8,583 | <1% | 9,053,088 |
| 2009 | 3,502,998 | 36% | 2,729,966 | 28% | 871 | <1% | 342,865 | 4% | 158,637 | 2% | 2,912,641 | 30% | 12,385 | <1% | 9,660,363 |
| 2010 | 3,233,835 | 34% | 2,220,619 | 23% | 1239 | <1% | 394,696 | 4% | 314,418 | 3% | 3,299,035 | 35% | 11,007 | <1% | 9,474,849 |
| 2011 | 2,701,643 | 25% | 2,801,644 | 26% | 900 | <1% | 702,901 | 7% | 430,585 | 4% | 4,087,184 | 38% | 5,283 | <1% | 10,730,140 |
| 2012 | 4,826,746 | 39% | 3,517,702 | 28% | 2162 | <1% | 476,520 | 4% | 468,304 | 4% | 3,065,001 | 25% | 18,418 | <1% | 12,374,853 |
| 2013 | 5,797,941 | 46% | 3,422,488 | 27% | 1,428 | <1% | 1,054,265 | 8% | 182,489 | 1% | 2,099,940 | 17% | 14,481 | <1% | 12,573,032 |
| 2014 | 2,384,335 | 36% | 2,381,367 | 36% | 621 | <1% | 199,707 | 3% | 129,478 | 2% | 1,575,630 | 24% | 8,509 | <1% | 6,679,647 |
| 2015 | 4,827,047 | 42% | 3,351,918 | 29% | 660 | <1% | 424,231 | 4% | 704,131 | 6% | 2,306,954 | 20% | 12,393 | <1% | 11,627,334 |
| 2016 | 3,108,581 | 34% | 2,679,235 | 29% | 554 | <1% | 164,944 | 2% | 396,058 | 4% | 2,731,469 | 30% | 36,425 | <1% | 9,117,266 |
| 2017 | 4,044,328 | 35% | 3,611,890 | 32% | 912 | <1% | 403,488 | 4% | 249,088 | 2% | 3,094,798 | 27% | 25,768 | <1% | 11,430,272 |
| 2018 | 4,985,011 | 43% | 2,526,020 | 22% | 132 | <1% | 530,597 | 5% | 211,148 | 2% | 3,202,405 | 28% | 16,442 | <1% | 11,471,755 |
| Averages | | | | | | | | | | | | | | | |
| 1962–2017 | 3,000,415 | 56% | 1,342,213 | 26% | 6,278 | <1% | 160,451 | 2% | 110,948 | 2% | - | - | - | - | 6,053,753 |
| 2008–2017 | 3,764,269 | 36% | 2,930,904 | 29% | 989 | <1% | 422,445 | 4% | 319,116 | 3% | 2,819,036 | 28% | 15,325 | <1% | 10,272,084 |
| Harvest | | | | | | | | | | | | | | | |
| Max. & year | 9,406,979 | 1998 | 3,611,890 | 2017 | 32,230 | 1984 | 1,054,265 | 2013 | 704,131 | 2015 | 4,889,605 | 2003 | 45,351 | 2000 | |
| Min. & year | 332,514 | 1969 | 208,918 | 1969 | 132 | 2018 | 1,702 | 1969 | 226 | 1973 | 1 | 1981 | 309 | 1983 | |

^a Includes confiscations, commercial test fisheries, and sport derbies where fish were sold.

Table 10.—Southeast Alaska region estimated exvessel value, harvest, average weight, and price paid per pound by gear and species, 2018.

| Fishery | Chinook | Jacks | Sockeye | Coho | Pink | Chum | Total |
|---|---------------------|----------------|--------------------|---------------------|---------------------|---------------------|----------------------|
| Exvessel Value in Dollars^a | | | | | | | |
| Purse Seine ^b | \$875,283 | \$1,387 | \$2,470,038 | \$728,482 | \$9,892,812 | \$37,238,032 | \$51,206,034 |
| Drift Gillnet ^b | \$1,368,260 | - | \$2,513,727 | \$2,872,048 | \$933,032 | \$20,233,420 | \$27,920,487 |
| Setnet | \$11,358 | - | \$81,917 | \$951,714 | \$27,411 | \$976 | \$1,073,375 |
| Troll | \$11,456,497 | - | \$42,940 | \$14,120,979 | \$85,681 | \$4,510,075 | \$30,216,171 |
| Annette Island ^c | \$143,228 | \$2 | \$61,094 | \$149,155 | \$462,350 | \$1,902,232 | \$2,718,060 |
| Hatchery Cost Recovery | \$571,229 | - | \$1,326,955 | \$743,126 | \$457,513 | \$14,602,967 | \$17,701,789 |
| Miscellaneous ^d | \$21,699 | - | \$21,980 | \$28,048 | \$3,432 | \$133,180 | \$208,340 |
| Total Exvessel Value | \$14,447,552 | \$1,389 | \$6,518,651 | \$19,593,550 | \$11,862,231 | \$78,620,882 | \$131,044,256 |
| Number Harvested | | | | | | | |
| Purse Seine ^b | 16,139 | 613 | 230,931 | 154,176 | 6,850,978 | 4,985,011 | 12,237,848 |
| Drift Gillnet ^b | 21,276 | - | 226,707 | 258,883 | 556,370 | 2,526,020 | 3,589,256 |
| Setnet | 295 | - | 7,175 | 95,640 | 28,114 | 132 | 131,356 |
| Troll | 99,698 | - | 5,186 | 938,271 | 53,584 | 530,597 | 1,627,336 |
| Annette Island ^b | 2,000 | 1 | 6,299 | 16,712 | 296,378 | 211,148 | 532,538 |
| Hatchery Cost Recovery | 20,060 | - | 158,537 | 136,604 | 293,654 | 3,202,405 | 3,811,260 |
| Miscellaneous ^d | 204 | - | 2,055 | 2,797 | 16,742 | 16,442 | 38,240 |
| Total Harvested | 159,672 | 614 | 636,890 | 1,603,083 | 8,095,820 | 11,471,755 | 21,967,834 |
| Average Weight in Pounds^e | | | | | | | |
| Purse Seine | 13.1 | 7.3 | 5.6 | 6.3 | 3.8 | 8.3 | |
| Drift Gillnet | 11.8 | - | 5.6 | 8.6 | 4.3 | 9 | |
| Setnet | 11 | - | 4.9 | 9.3 | 3.9 | 8.4 | |
| Troll | 12.6 | - | 4.6 | 7 | 4.1 | 8.5 | |
| Annette Island | 12.2 | 7 | 5.3 | 8.5 | 3.9 | 9.9 | |
| Hatchery Cost Recovery | 12.6 | - | 4.5 | 8.5 | 3.8 | 8 | |
| Miscellaneous ^d | 12.8 | - | 5.6 | 9.2 | 4.1 | 9 | |
| Estimated Average Exvessel Price per Pound^f | | | | | | | |
| Purse Seine | \$4.14 | \$0.31 | \$1.91 | \$0.75 | \$0.38 | \$0.90 | |
| Drift Gillnet | \$5.45 | - | \$1.98 | \$1.29 | \$0.39 | \$0.89 | |
| Setnet | \$3.50 | - | \$2.33 | \$1.07 | \$0.25 | \$0.88 | |
| Troll | \$9.12 | - | \$1.80 | \$2.15 | \$0.39 | \$1.00 | |
| Annette Island | \$5.87 | 0.25 | \$1.83 | \$1.05 | \$0.40 | \$0.91 | |
| Hatchery Cost Recovery | \$2.26 | - | \$1.86 | \$0.64 | \$0.41 | \$0.57 | |
| Miscellaneous | \$8.31 | - | \$1.91 | \$1.09 | \$0.05 | \$0.90 | |

^a Exvessel Value calculation = (Number caught) x (average weight) x (average exvessel price).

^b In addition to adults, jack Chinook salmon <28 inches can be sold in the purse seine fishery, and salmon <28 inches can be sold in the drift gillnet fishery.

^c Annette Island Reserve includes purse seine, drift gillnet, and hand and power troll gear types.

^d Includes confiscations, commercial test fisheries, and sport derbies where fish were sold.

^e Average weight = (Total pounds for all fish tickets (where pounds>0))/(total number of fish for all tickets (where number>0)).

^f Average price = (Total value for all fish tickets (where value>0))/(total pounds for all fish tickets (where pounds>0)).

Table 11.–Southeast Alaska Region salmon exvessel value estimates from CFEC (1976–2017) and fish ticket data (2018), by gear group, 1976–2018.

| Year | Purse Seine | Drift Gillnet | Set Gillnet | Troll | Total |
|----------------------|---------------|---------------|--------------|---------------|----------------|
| 1976 | \$11,064,253 | \$8,605,228 | \$1,266,918 | \$9,960,934 | \$30,897,333 |
| 1977 | \$24,528,760 | \$11,849,486 | \$2,165,108 | \$15,355,560 | \$53,898,914 |
| 1978 | \$27,664,646 | \$9,750,459 | \$2,588,725 | \$23,142,387 | \$63,146,217 |
| 1979 | \$19,632,769 | \$11,434,552 | \$3,022,174 | \$27,876,636 | \$61,966,131 |
| 1980 | \$29,487,986 | \$9,388,349 | \$2,272,641 | \$16,404,446 | \$57,553,422 |
| 1981 | \$36,786,344 | \$9,393,150 | \$2,631,179 | \$19,708,310 | \$68,518,983 |
| 1982 | \$28,147,770 | \$10,423,447 | \$2,220,866 | \$24,414,056 | \$65,206,139 |
| 1983 | \$33,292,294 | \$7,602,633 | \$1,200,401 | \$15,975,186 | \$58,070,514 |
| 1984 | \$35,000,066 | \$13,498,190 | \$2,305,102 | \$26,602,196 | \$77,405,554 |
| 1985 | \$52,018,934 | \$17,083,901 | \$2,777,108 | \$25,009,669 | \$96,889,612 |
| 1986 | \$53,893,815 | \$14,585,793 | \$2,044,606 | \$28,074,767 | \$98,598,981 |
| 1987 | \$22,739,529 | \$19,227,191 | \$4,587,640 | \$25,368,212 | \$71,922,572 |
| 1988 | \$53,314,374 | \$32,342,986 | \$8,703,413 | \$29,827,740 | \$124,188,513 |
| 1989 | \$91,241,060 | \$20,578,737 | \$4,217,986 | \$23,526,234 | \$139,564,017 |
| 1990 | \$44,821,503 | \$16,439,366 | \$4,560,978 | \$31,101,694 | \$96,923,541 |
| 1991 | \$36,071,105 | \$12,037,061 | \$2,330,261 | \$25,162,099 | \$75,600,526 |
| 1992 | \$51,054,882 | \$20,850,361 | \$5,320,994 | \$29,351,980 | \$106,578,217 |
| 1993 | \$52,894,318 | \$15,904,271 | \$3,000,832 | \$26,642,558 | \$98,441,979 |
| 1994 | \$61,164,567 | \$17,207,769 | \$3,653,893 | \$38,943,302 | \$120,969,531 |
| 1995 | \$55,806,812 | \$16,899,040 | \$2,479,193 | \$16,673,792 | \$91,858,837 |
| 1996 | \$42,813,455 | \$14,430,995 | \$2,406,670 | \$16,394,667 | \$76,045,787 |
| 1997 | \$40,813,997 | \$11,143,699 | \$3,216,870 | \$18,853,651 | \$74,028,217 |
| 1998 | \$45,509,746 | \$11,345,286 | \$1,416,481 | \$14,974,147 | \$73,245,660 |
| 1999 | \$56,402,089 | \$11,489,118 | \$2,324,296 | \$20,442,587 | \$90,658,090 |
| 2000 | \$38,060,764 | \$10,940,909 | \$1,491,218 | \$14,786,178 | \$65,279,069 |
| 2001 | \$48,742,800 | \$11,316,836 | \$1,134,695 | \$17,191,517 | \$78,385,848 |
| 2002 | \$20,244,170 | \$8,132,853 | \$741,392 | \$13,164,474 | \$42,282,889 |
| 2003 | \$26,705,739 | \$8,903,210 | \$1,140,130 | \$14,812,555 | \$51,561,634 |
| 2004 | \$31,672,452 | \$11,778,867 | \$1,629,266 | \$29,016,910 | \$74,097,495 |
| 2005 | \$36,073,649 | \$12,753,519 | \$926,824 | \$26,770,816 | \$76,524,808 |
| 2006 | \$27,536,028 | \$20,007,955 | \$1,724,122 | \$34,645,633 | \$83,913,738 |
| 2007 | \$49,646,050 | \$15,081,267 | \$2,516,647 | \$30,985,116 | \$98,229,080 |
| 2008 | \$40,986,039 | \$24,209,429 | \$1,657,225 | \$36,566,992 | \$103,419,685 |
| 2009 | \$48,417,377 | \$18,578,453 | \$1,681,645 | \$22,942,077 | \$91,619,552 |
| 2010 | \$56,238,100 | \$26,618,998 | \$2,157,567 | \$31,945,182 | \$116,959,847 |
| 2011 | \$122,181,438 | \$31,126,506 | \$2,311,802 | \$32,407,478 | \$188,028,596 |
| 2012 | \$73,082,279 | \$37,475,066 | \$1,536,822 | \$29,851,966 | \$141,949,908 |
| 2013 | \$154,063,851 | \$29,456,023 | \$3,018,685 | \$41,311,596 | \$227,851,157 |
| 2014 | \$58,359,164 | \$28,377,429 | \$2,117,425 | \$46,553,102 | \$135,409,768 |
| 2015 | \$55,228,561 | \$20,621,188 | \$1,324,263 | \$25,790,377 | \$102,967,142 |
| 2016 | \$41,671,425 | \$22,718,531 | \$1,930,288 | \$34,529,503 | \$92,837,746 |
| 2017 | \$75,696,745 | \$30,748,441 | \$2,549,101 | \$36,002,993 | \$135,599,151 |
| 2018 ^a | \$ 51,206,034 | \$ 27,920,487 | \$ 1,073,375 | \$ 30,216,171 | \$ 110,416,067 |
| Average 2008–2017 | \$72,592,498 | \$26,993,006 | \$2,028,482 | \$33,790,127 | \$133,664,255 |

^a Exvessel value estimates for 2018 are preliminary.

Table 12.—Southeast Alaska reported subsistence and personal use salmon harvest, by species, and number of permits issued, from 1985 to 2018.

| Year ^a | Permits | | | Number of Salmon Harvested | | | | | |
|-------------------|---------|----------|---------------------|----------------------------|---------|-------|-------|-------|--------|
| | Issued | Returned | Fished ^b | Chinook | Sockeye | Coho | Pink | Chum | Total |
| 1985 | 3,012 | 0 | 1,271 | 19 | 20,006 | 360 | 2,136 | 2,951 | 25,472 |
| 1986 | 2,777 | 0 | 1,353 | 29 | 21,974 | 277 | 971 | 2,840 | 26,091 |
| 1987 | 2,678 | 0 | 1,322 | 34 | 25,430 | 117 | 1,491 | 3,881 | 30,953 |
| 1988 | 2,821 | 0 | 998 | 94 | 20,011 | 97 | 1,145 | 3,013 | 24,360 |
| 1989 | 3,102 | 0 | 1,369 | 221 | 29,237 | 513 | 3,472 | 3,086 | 36,529 |
| 1990 | 3,142 | 0 | 1,428 | 163 | 33,114 | 806 | 3,715 | 3,436 | 41,234 |
| 1991 | 3,447 | 0 | 1,493 | 201 | 37,369 | 655 | 1,829 | 3,358 | 43,412 |
| 1992 | 3,331 | 0 | 1,691 | 65 | 47,630 | 1,294 | 2,905 | 3,189 | 55,083 |
| 1993 | 3,731 | 0 | 1,939 | 88 | 51,099 | 1,252 | 2,147 | 2,582 | 57,168 |
| 1994 | 3,933 | 0 | 2,057 | 100 | 52,491 | 1,438 | 3,607 | 4,109 | 61,745 |
| 1995 | 3,837 | 0 | 1,837 | 131 | 41,643 | 1,693 | 3,170 | 3,340 | 49,977 |
| 1996 ^c | 4,047 | 3,226 | 1,996 | 144 | 51,290 | 1,123 | 2,341 | 4,112 | 59,010 |
| 1997 | 4,082 | 3,406 | 2,031 | 64 | 45,333 | 946 | 3,268 | 3,611 | 53,222 |
| 1998 | 4,131 | 3,513 | 2,185 | 152 | 49,709 | 1,254 | 3,161 | 5,042 | 59,318 |
| 1999 | 4,186 | 3,598 | 2,173 | 372 | 45,604 | 789 | 2,736 | 4,356 | 53,857 |
| 2000 | 3,633 | 3,069 | 1,838 | 292 | 41,786 | 745 | 2,055 | 2,954 | 47,832 |
| 2001 | 3,470 | 3,002 | 1,776 | 386 | 44,188 | 1,071 | 3,671 | 3,298 | 52,614 |
| 2002 | 3,204 | 2,662 | 1,673 | 428 | 44,251 | 1,245 | 2,620 | 1,833 | 50,377 |
| 2003 | 3,469 | 2,844 | 1,881 | 243 | 52,506 | 1,222 | 3,061 | 3,205 | 60,237 |
| 2004 | 3,565 | 3,186 | 1,994 | 352 | 49,979 | 1,308 | 2,788 | 2,722 | 57,149 |
| 2005 | 3,200 | 2,706 | 1,486 | 189 | 31,428 | 1,183 | 4,362 | 1,631 | 38,793 |
| 2006 | 3,279 | 2,700 | 1,667 | 415 | 42,914 | 961 | 2,960 | 1,518 | 48,768 |
| 2007 | 3,039 | 2,716 | 1,530 | 216 | 32,701 | 659 | 2,288 | 625 | 36,489 |
| 2008 | 3,031 | 2,727 | 1,459 | 171 | 33,592 | 2,452 | 1,591 | 1,319 | 39,125 |
| 2009 | 3,294 | 3,015 | 1,776 | 169 | 39,897 | 1,982 | 3,042 | 1,712 | 46,802 |
| 2010 | 3,400 | 3,046 | 1,743 | 866 | 37,820 | 2,342 | 2,960 | 721 | 44,709 |
| 2011 | 3,145 | 2,790 | 1,549 | 392 | 32,276 | 1,718 | 4,954 | 1,058 | 40,398 |
| 2012 | 3,106 | 2,734 | 1,682 | 364 | 39,124 | 1,681 | 2,257 | 1,026 | 44,452 |
| 2013 | 3,288 | 2,924 | 1,772 | 249 | 38,143 | 2,438 | 3,090 | 1,189 | 45,109 |
| 2014 | 3,163 | 2,799 | 1,669 | 264 | 33,235 | 1,969 | 1,940 | 782 | 38,190 |
| 2015 | 2,888 | 2,441 | 1,395 | 86 | 27,007 | 1,584 | 4,111 | 960 | 33,748 |
| 2016 | 2,912 | 2,425 | 1,556 | 98 | 35,081 | 2,011 | 2,948 | 1,319 | 41,457 |
| 2017 | 2,936 | 2,249 | 1,427 | 81 | 29,132 | 1,267 | 3,895 | 836 | 35,211 |
| 2018 ^d | 3,461 | 1,574 | 1,252 | 92 | 29,380 | 1,997 | 1,149 | 828 | 33,446 |
| Averages | | | | | | | | | |
| 1985–2017 | 3,342 | 1,933 | 1,667 | 216 | 38,091 | 1,226 | 2,809 | 2,473 | 44,815 |
| 2008–2017 | 3,116 | 2,715 | 1,603 | 274 | 34,531 | 1,944 | 3,079 | 1,092 | 40,920 |

Note: Data presented in this table are for Southeast Alaska only and exclude the Yakutat area.

^a Prior to 1985, the numbers of permits issued and returned were not recorded.

^b Number of permits fished is estimated from permit data.

^c Prior to 1996, the numbers of permits issued and returned are not as reliable due to data entry omissions (if a permit had zero harvest it was not recorded as a returned permit).

^d Data for 2018 are preliminary because only 45% of permits have been returned at the time of writing. Permits will continue to be returned and entered through next season. Over the past 10 years, 87% of permits were returned on average.

Table 13.—Yakutat Area reported subsistence salmon harvest, by species, and number of permits issued, from 1989 to 2018.

| Year ^a | Permits | | | Number of Salmon Harvested | | | | | |
|-------------------|---------|----------|--------|----------------------------|---------|-------|------|------|-------|
| | Issued | Returned | Fished | Chinook | Sockeye | Coho | Pink | Chum | Total |
| 1989 | 153 | 0 | 87 | 359 | 3,494 | 880 | 221 | 51 | 5,005 |
| 1990 | 128 | 0 | 74 | 361 | 3,332 | 809 | 35 | 2 | 4,539 |
| 1991 | 134 | 0 | 27 | 61 | 896 | 213 | 1 | 0 | 1,171 |
| 1992 | 139 | 0 | 109 | 549 | 5,469 | 3,645 | 37 | 12 | 9,712 |
| 1993 | 130 | 0 | 105 | 449 | 5,073 | 2,263 | 6 | 1 | 7,792 |
| 1994 | 137 | 0 | 101 | 700 | 4,586 | 2,169 | 32 | 102 | 7,589 |
| 1995 | 138 | 0 | 94 | 1,070 | 3,419 | 2,007 | 45 | 21 | 6,562 |
| 1996 ^b | 124 | 116 | 89 | 934 | 3,666 | 1,359 | 96 | 31 | 6,086 |
| 1997 | 129 | 123 | 89 | 675 | 3,428 | 1,368 | 86 | 6 | 5,563 |
| 1998 | 141 | 140 | 111 | 899 | 3,951 | 1,589 | 200 | 0 | 6,639 |
| 1999 | 122 | 118 | 89 | 938 | 3,905 | 959 | 107 | 0 | 5,909 |
| 2000 | 138 | 130 | 109 | 963 | 4,250 | 1,163 | 149 | 27 | 6,552 |
| 2001 | 139 | 120 | 102 | 880 | 4,119 | 1,626 | 91 | 10 | 6,726 |
| 2002 | 124 | 123 | 98 | 1,395 | 4,334 | 1,836 | 187 | 13 | 7,765 |
| 2003 | 128 | 112 | 87 | 1,103 | 3,488 | 1,281 | 137 | 1 | 6,010 |
| 2004 | 138 | 108 | 87 | 936 | 4,078 | 801 | 45 | 26 | 5,886 |
| 2005 | 115 | 95 | 66 | 552 | 2,649 | 756 | 77 | 5 | 4,039 |
| 2006 | 127 | 110 | 90 | 823 | 3,540 | 659 | 90 | 6 | 5,118 |
| 2007 | 121 | 88 | 78 | 594 | 4,152 | 507 | 125 | 3 | 5,381 |
| 2008 | 122 | 97 | 81 | 711 | 2,791 | 736 | 131 | 6 | 4,375 |
| 2009 | 133 | 108 | 92 | 807 | 4,082 | 1,178 | 51 | 4 | 6,122 |
| 2010 | 148 | 118 | 87 | 422 | 4,430 | 672 | 237 | 80 | 5,841 |
| 2011 | 169 | 127 | 97 | 374 | 3,822 | 887 | 116 | 1 | 5,200 |
| 2012 | 162 | 128 | 93 | 326 | 4,743 | 1,018 | 149 | 16 | 6,252 |
| 2013 | 153 | 127 | 97 | 515 | 4,370 | 686 | 4 | 26 | 5,601 |
| 2014 | 156 | 123 | 93 | 505 | 4,807 | 779 | 101 | 36 | 6,228 |
| 2015 | 137 | 130 | 94 | 307 | 4,077 | 968 | 156 | 8 | 5,516 |
| 2016 | 129 | 105 | 72 | 270 | 3,284 | 817 | 78 | 0 | 4,449 |
| 2017 | 129 | 110 | 69 | 325 | 2,680 | 627 | 167 | 4 | 3,803 |
| 2018 ^c | 107 | 63 | 36 | 86 | 516 | 299 | 17 | 2 | 920 |
| Averages | | | | | | | | | |
| 1989–2017 | 136 | 88 | 89 | 648 | 3,825 | 1,181 | 102 | 17 | 5,773 |
| 2008–2017 | 144 | 117 | 88 | 456 | 3,909 | 837 | 119 | 18 | 5,339 |

^a Prior to 1989, the numbers of permits issued and returned were not recorded.

^b Prior to 1996, the numbers of permits issued and returned are not as reliable due to data entry omissions (if a permit had zero harvest it was not record as a returned permit).

^c Data for 2018 are preliminary because only 59% of permits have been returned. Permits will continue to be returned and entered through next season. Over the past 10 years, 82% of permits were returned on average.

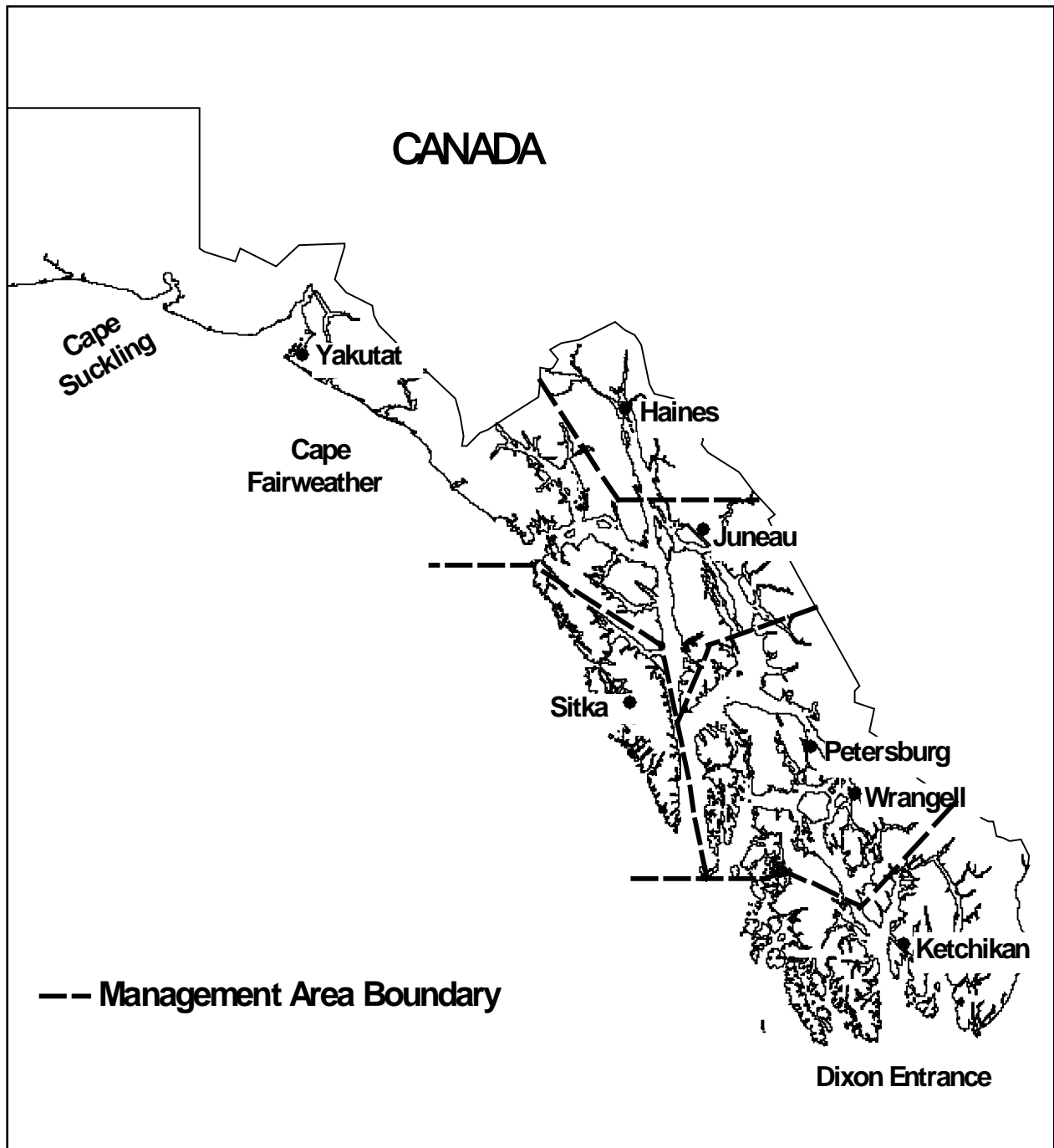


Figure 1.—The Southeast Alaska/Yakutat Region (Region I) consists of Alaska waters between Cape Suckling on the north and Dixon Entrance on the south. Troll fisheries are managed regionally, and drift gillnet, setnet, and purse seine fisheries are managed by area offices in Ketchikan, Petersburg/Wrangell, Sitka, Juneau, Haines, and Yakutat.

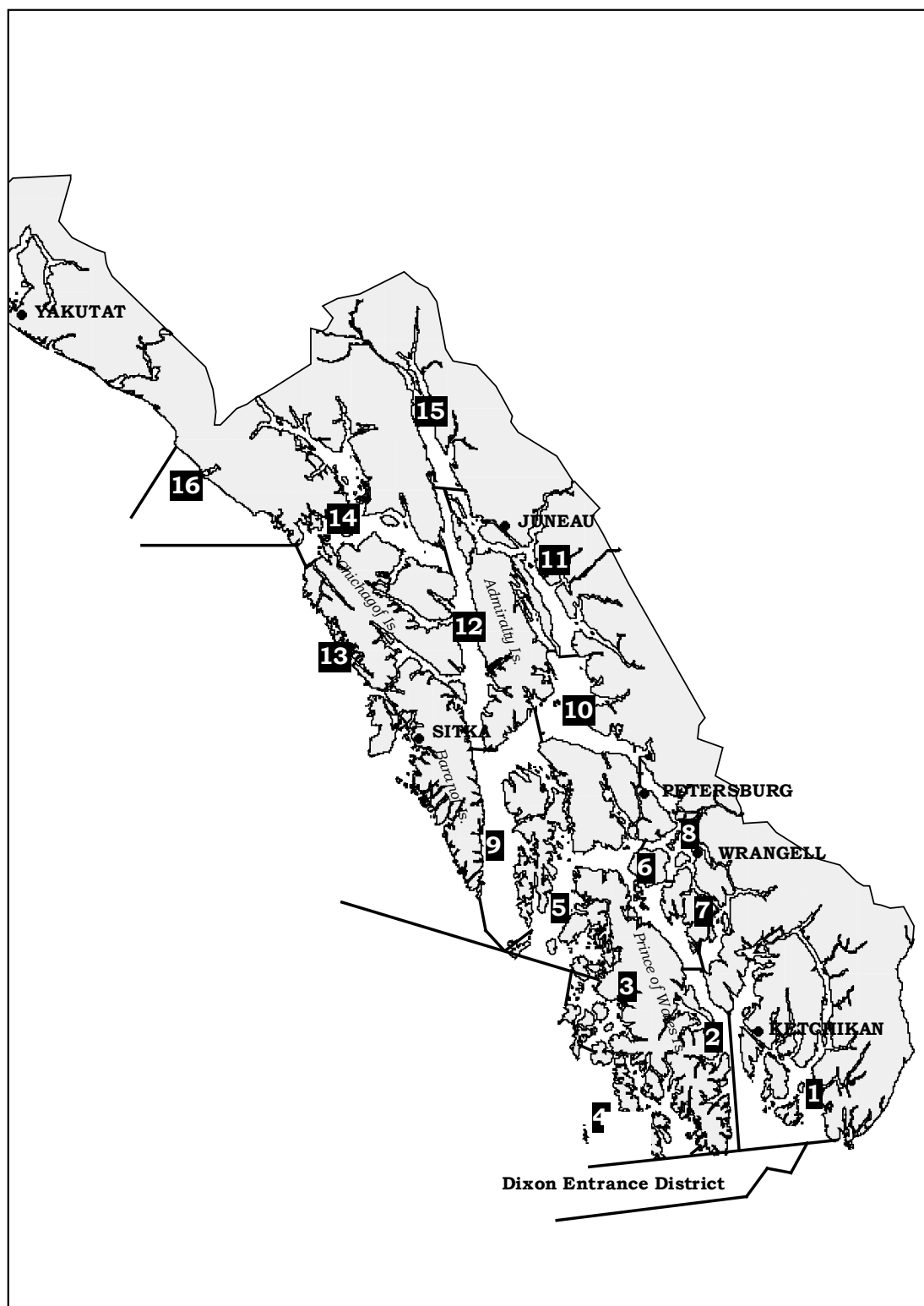


Figure 2.—Boundaries for regulatory Districts 1 to 16, as well as Dixon Entrance District, within Southeast Alaska.

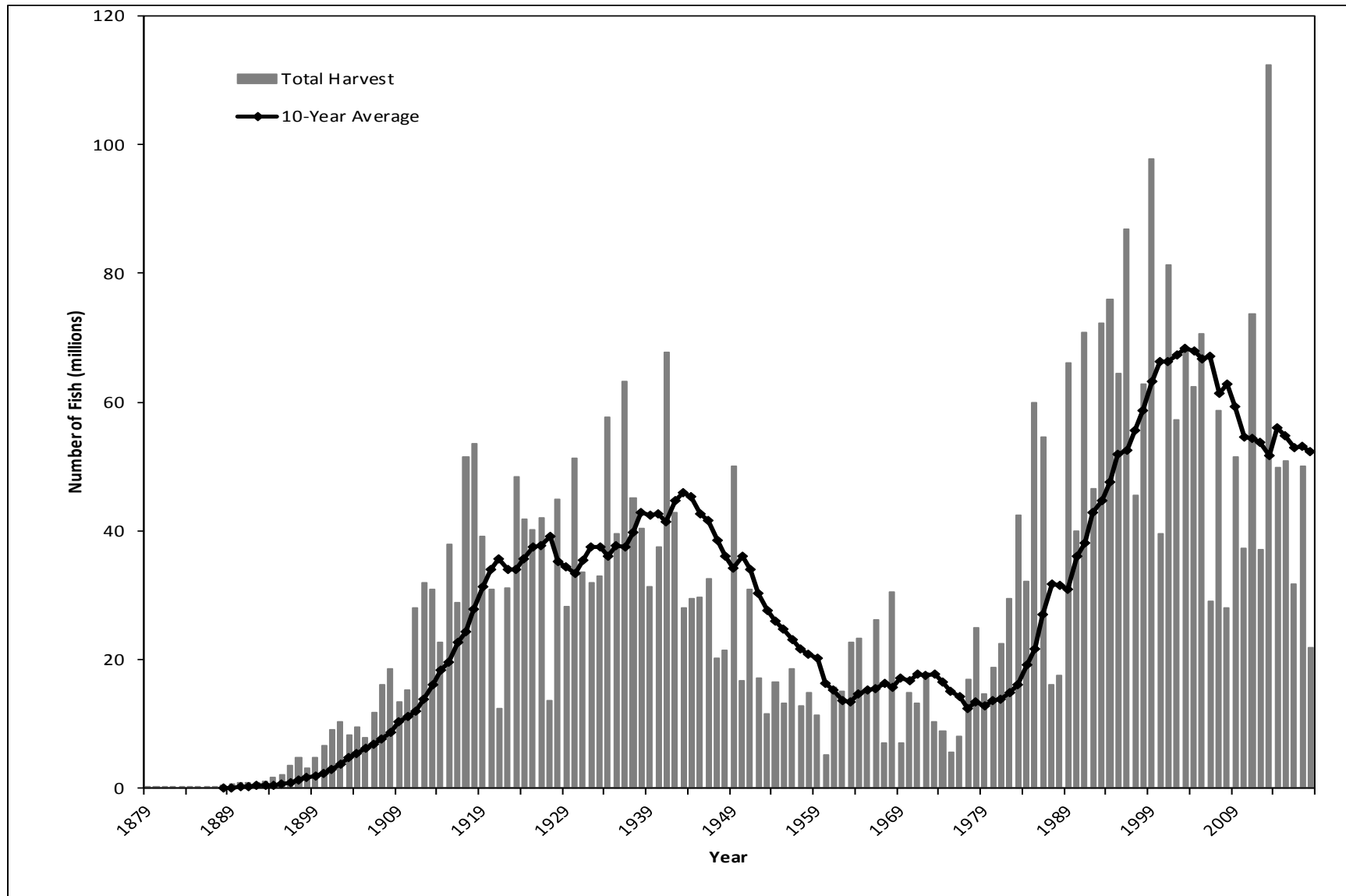


Figure 4.—Region I (Southeast Alaska and Yakutat) historical salmon harvest and recent 10-year average harvest, from 1878 to 2018.

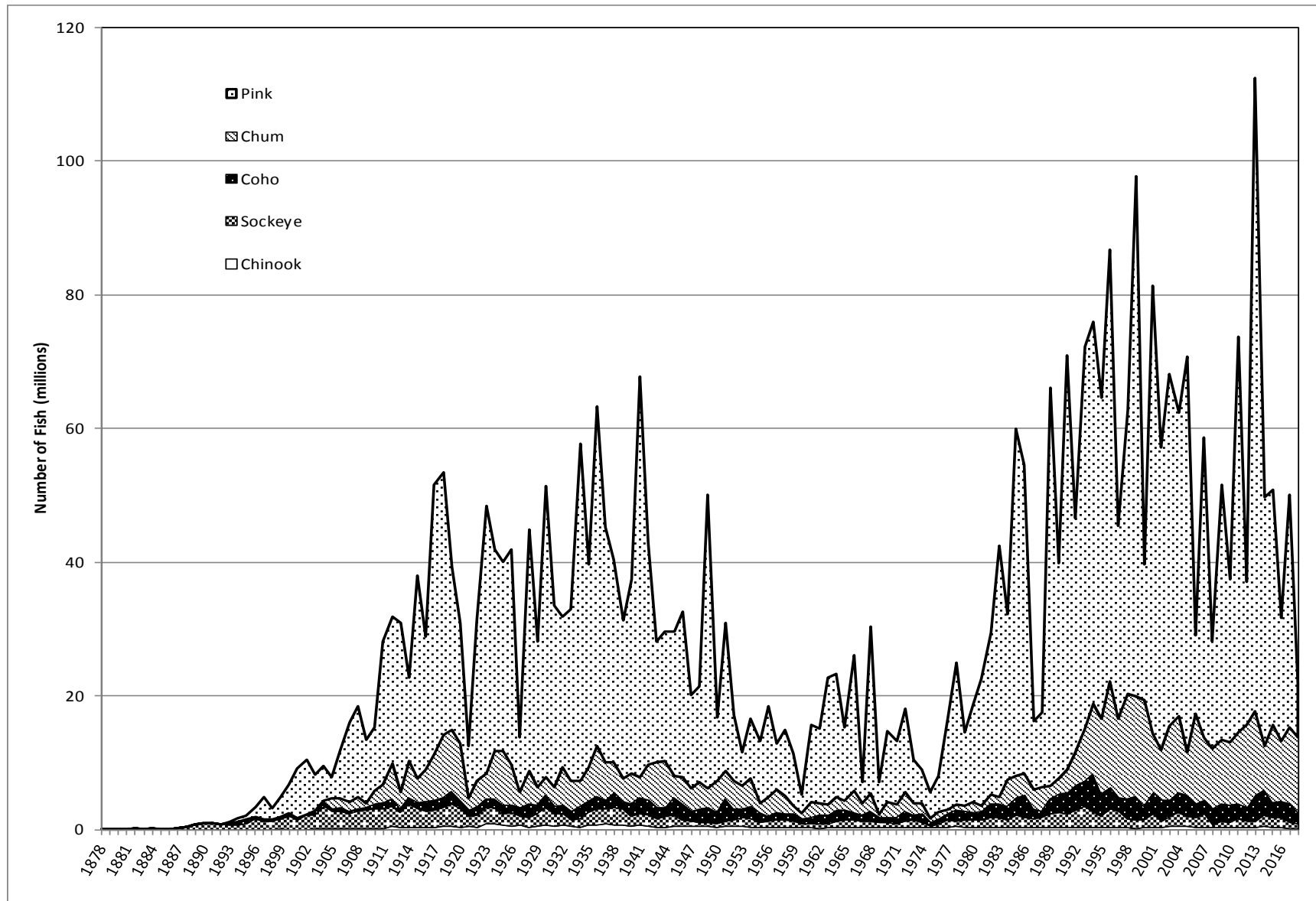


Figure 5.—Region I (Southeast Alaska and Yakutat) historical salmon harvest by species and season, 1878 to 2018.

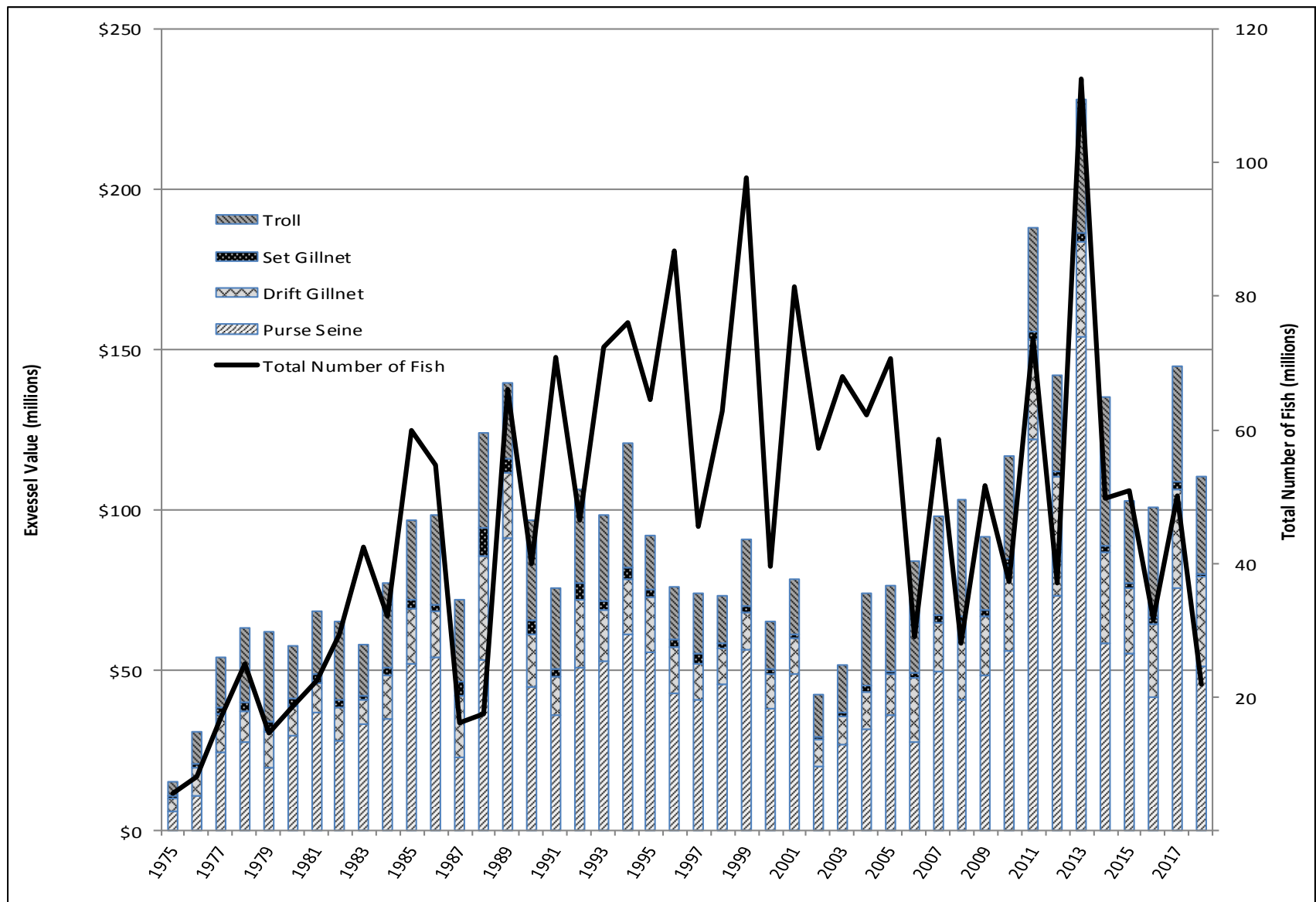


Figure 6.—Total commercial exvessel value by gear type and season from CFEC (1975–2017) and fish ticket (2018) data, and number of salmon harvested by season, 1975 to 2018.

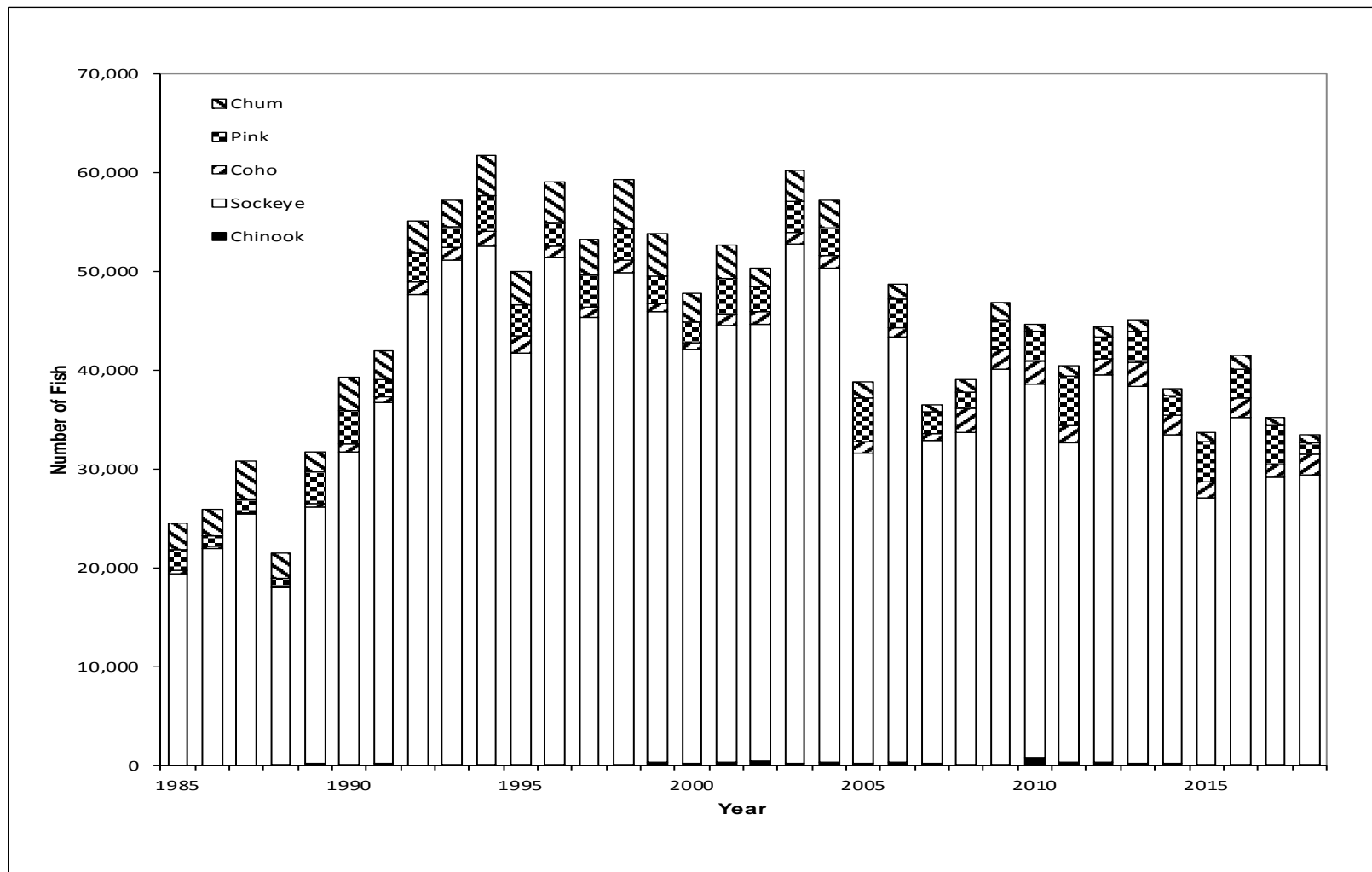


Figure 7.—Number of fish harvested in the subsistence/personal use fishery, by species, for Southeast Alaska, 1985 to 2018.

Note: Harvest information for 2018 is preliminary because only 59% of permits had been returned at time of reporting.

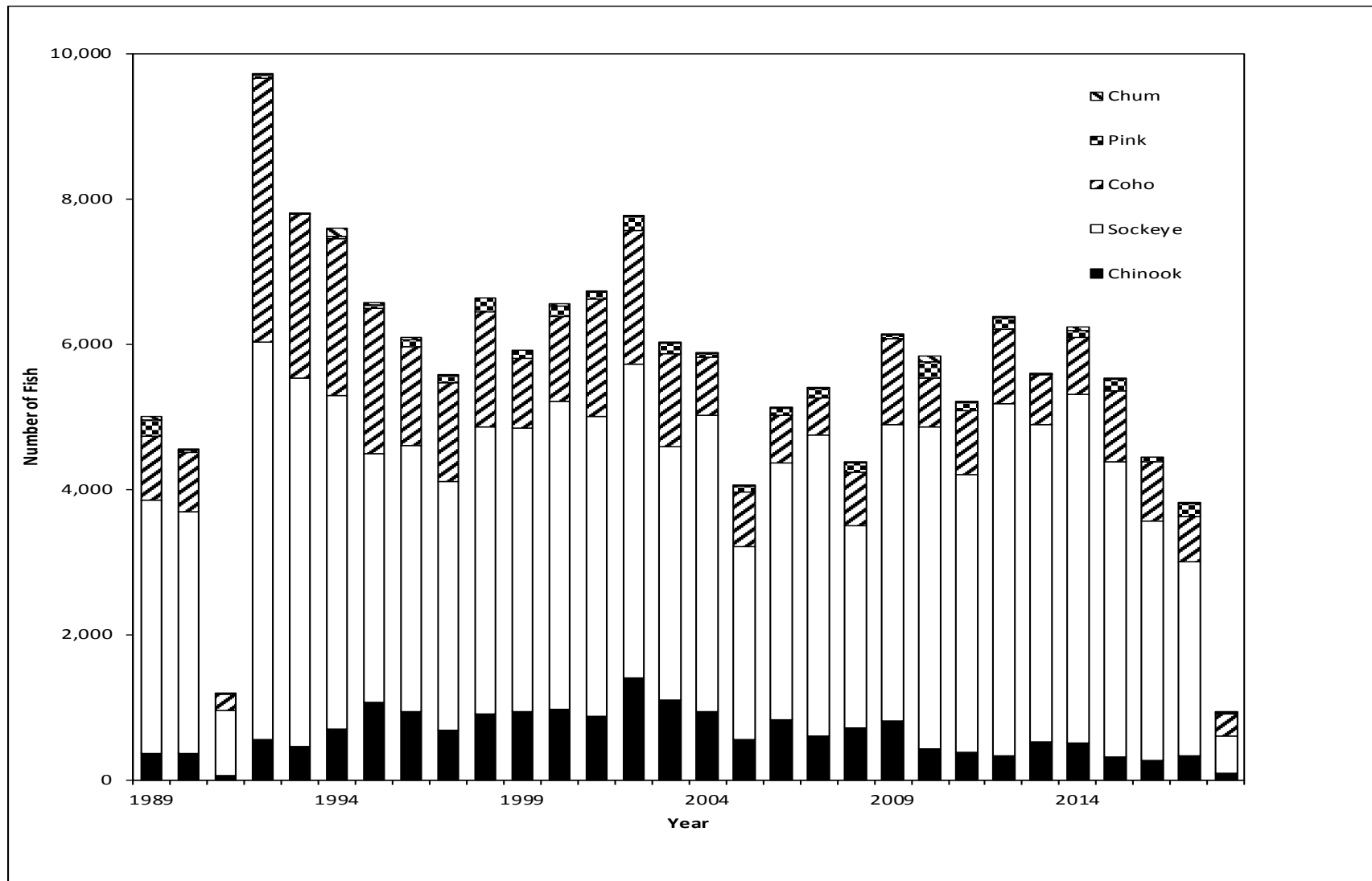


Figure 8.—Number of fish harvested, by species, in the Yakutat subsistence/personal use fishery, 1989 to 2018.

Note: Harvest information for 2018 is preliminary because only 26% of permits had been returned at time of reporting.