

**Annual Management Report for Groundfish Fisheries
in the Kodiak, Chignik, and South Alaska Peninsula
Management Areas, 2013**

by

Trent Hartill,

Paul Converse,

and

Kim Phillips

November 2014

Alaska Department of Fish and Game

Divisions of Sport Fish and Commercial Fisheries



Symbols and Abbreviations

The following symbols and abbreviations, and others approved for the Système International d'Unités (SI), are used without definition in the following reports by the Divisions of Sport Fish and of Commercial Fisheries: Fishery Manuscripts, Fishery Data Series Reports, Fishery Management Reports, and Special Publications. All others, including deviations from definitions listed below, are noted in the text at first mention, as well as in the titles or footnotes of tables, and in figure or figure captions.

Weights and measures (metric)		General		Mathematics, statistics		
centimeter	cm	Alaska Administrative Code	AAC	all standard mathematical signs, symbols and abbreviations		
deciliter	dL	all commonly accepted abbreviations	e.g., Mr., Mrs., AM, PM, etc.	alternate hypothesis	H _A	
gram	g	all commonly accepted professional titles	e.g., Dr., Ph.D., R.N., etc.	base of natural logarithm	<i>e</i>	
hectare	ha			catch per unit effort	CPUE	
kilogram	kg	at	@	coefficient of variation	CV	
kilometer	km			common test statistics	(F, t, χ^2 , etc.)	
liter	L	compass directions:		confidence interval	CI	
meter	m	east	E	correlation coefficient (multiple)	R	
milliliter	mL	north	N	correlation coefficient (simple)	r	
millimeter	mm	south	S	covariance	cov	
Weights and measures (English)		west	W	degree (angular)	°	
	cubic feet per second	ft³/s	copyright	©	degrees of freedom	df
	foot	ft	corporate suffixes:		expected value	<i>E</i>
	gallon	gal	Company	Co.	greater than	>
	inch	in	Corporation	Corp.	greater than or equal to	≥
	mile	mi	Incorporated	Inc.	harvest per unit effort	HPUE
	nautical mile	nmi	Limited	Ltd.	less than	<
	ounce	oz	District of Columbia	D.C.	less than or equal to	≤
	pound	lb	et alii (and others)	et al.	logarithm (natural)	ln
	quart	qt	et cetera (and so forth)	etc.	logarithm (base 10)	log
yard	yd	exempli gratia		logarithm (specify base)	log ₂ , etc.	
Time and temperature		(for example)	e.g.	minute (angular)	'	
	day	d	Federal Information Code	FIC	not significant	NS
	degrees Celsius	°C	id est (that is)	i.e.	null hypothesis	H ₀
	degrees Fahrenheit	°F	latitude or longitude	lat or long	percent	%
	degrees kelvin	K	monetary symbols		probability	P
	hour	h	(U.S.)	\$, ¢	probability of a type I error (rejection of the null hypothesis when true)	α
	minute	min	months (tables and figures): first three letters	Jan,...,Dec	probability of a type II error (acceptance of the null hypothesis when false)	β
	second	s	registered trademark	®	second (angular)	"
	Physics and chemistry		trademark	™	standard deviation	SD
		all atomic symbols		United States (adjective)	U.S.	standard error
alternating current		AC	United States of America (noun)	USA	variance	
ampere		A	U.S.C.	United States Code	population sample	Var var
calorie		cal	U.S. state	use two-letter abbreviations (e.g., AK, WA)		
direct current		DC				
hertz		Hz				
horsepower		hp				
hydrogen ion activity (negative log of)		pH				
parts per million		ppm				
parts per thousand	ppt, ‰					
volts	V					
watts	W					

FISHERY MANAGEMENT REPORT NO. 14-45

**ANNUAL MANAGEMENT REPORT FOR
GROUNDFISH FISHERIES IN THE KODIAK, CHIGNIK,
AND SOUTH ALASKA PENINSULA MANAGEMENT AREAS, 2013**

by

Trent Hartill

Alaska Department of Fish and Game, Division of Commercial Fisheries, Kodiak

Paul Converse

Alaska Department of Fish and Game, Division of Commercial Fisheries, Kodiak

and

Kim Phillips

Alaska Department of Fish and Game, Division of Commercial Fisheries, Kodiak

Alaska Department of Fish and Game
Division of Sport Fish, Research and Technical Services
333 Raspberry Road, Anchorage, Alaska, 99518-1565

November 2014

The Fishery Management Reports series was established in 1989 by the Division of Sport Fish for the publication of an overview of management activities and goals in a specific geographic area, and became a joint divisional series in 2004 with the Division of Commercial Fisheries. Fishery Management Reports are intended for fishery and other technical professionals, as well as lay persons. Fishery Management Reports are available through the Alaska State Library and on the Internet: <http://www.adfg.alaska.gov/sf/publications/>. This publication has undergone regional peer review.

*Trent Hartill,
Paul Converse,
and
Kim Phillips*

*Alaska Department of Fish and Game, Division of Commercial Fisheries
351 Research Court, Kodiak, AK 99615, USA*

This document should be cited as:

Hartill, T., P. Converse, and K. Phillips. 2014. Annual management report for groundfish fisheries in the Kodiak, Chignik, and South Alaska Peninsula Management Areas, 2013. Alaska Department of Fish and Game, Fishery Management Report No. 14-45, Anchorage.

The Alaska Department of Fish and Game (ADF&G) administers all programs and activities free from discrimination based on race, color, national origin, age, sex, religion, marital status, pregnancy, parenthood, or disability. The department administers all programs and activities in compliance with Title VI of the Civil Rights Act of 1964, Section 504 of the Rehabilitation Act of 1973, Title II of the Americans with Disabilities Act (ADA) of 1990, the Age Discrimination Act of 1975, and Title IX of the Education Amendments of 1972.

If you believe you have been discriminated against in any program, activity, or facility please write:

ADF&G ADA Coordinator, P.O. Box 115526, Juneau, AK 99811-5526

U.S. Fish and Wildlife Service, 4401 N. Fairfax Drive, MS 2042, Arlington, VA 22203

Office of Equal Opportunity, U.S. Department of the Interior, 1849 C Street NW MS 5230, Washington DC 20240

The department's ADA Coordinator can be reached via phone at the following numbers:

(VOICE) 907-465-6077, (Statewide Telecommunication Device for the Deaf) 1-800-478-3648,

(Juneau TDD) 907-465-3646, or (FAX) 907-465-6078

For information on alternative formats and questions on this publication, please contact:

ADF&G Division of Sport Fish, Research and Technical Services, 333 Raspberry Road, Anchorage, AK 99518 (907) 267-2375.

TABLE OF CONTENTS

	Page
LIST OF TABLES.....	ii
LIST OF FIGURES.....	iii
LIST OF APPENDICES	iii
ABSTRACT	1
INTRODUCTION.....	1
PACIFIC COD	2
Parallel Season.....	2
Background.....	2
2013 Central Gulf of Alaska Parallel Season	3
2013 Western Gulf of Alaska Parallel Season.....	3
State-Waters Season	3
Background.....	3
2013 State-Waters Pacific Cod Season Overview	3
Kodiak Area	4
Chignik Area	5
South Alaska Peninsula Area	5
BLACK ROCKFISH.....	7
Background.....	7
2013 Black Rockfish Overview.....	7
Kodiak Area Fishery.....	7
Chignik Area Fishery.....	7
South Alaska Peninsula Area Eastern District Fishery	7
Black Rockfish Harvest Monitoring	7
SABLEFISH.....	8
LINGCOD	8
PARALLEL WALLEYE POLLOCK FISHERIES.....	8
NON-PELAGIC TRAWL CLOSURES.....	9
REFERENCES CITED	10
TABLES AND FIGURES.....	11
APPENDIX A. FREQUENTLY USED ACRONYMS AND KEY WORDS.....	51
APPENDIX B. KODIAK, CHIGNIK, AND SOUTH ALASKA PENINSULA MANAGEMENT AREAS STATE-WATERS STATISTICAL AREAS FOR GROUNDFISH.....	53

LIST OF TABLES

Table	Page
1. Top 30 species taken as directed fishery or bycatch, by total weight as reported on groundfish fish tickets, from state waters of Kodiak, Chignik, and South Alaska Peninsula groundfish management areas, 2013.....	12
2. Groundfish emergency orders issued for the Kodiak, Chignik, and South Alaska Peninsula management areas, 2013.	13
3. Pacific cod harvest, in millions of pounds, from Central and Western Gulf of Alaska Management areas, 1990–2013.....	14
4. Kodiak Area Pacific cod harvest by gear type, during parallel Pacific cod seasons, 1997–2013.....	15
5. Chignik Area Pacific cod harvest by gear type, during parallel Pacific cod seasons, 1997–2013.	16
6. South Alaska Peninsula Area Pacific cod harvest by gear type, during parallel Pacific cod seasons, 1997–2013.....	17
7. Regulatory development of state-waters and parallel Pacific cod seasons in the Kodiak, Chignik, and South Alaska Peninsula areas.....	18
8. Harvest, effort, and value from Kodiak, Chignik, and South Alaska Peninsula areas state-waters Pacific cod seasons, 2000–2013.	20
9. Kodiak Area state-waters Pacific cod season openings by gear type, 1997–2013.	22
10. Kodiak Area state-waters Pacific cod harvest and effort by gear type, 1997–2013.	24
11. Pacific cod harvest and effort by statistical area from the Kodiak Area state-waters season, 2013.	25
12. Chignik Area state-waters Pacific cod season openings by gear type, 1997–2013.	26
13. Chignik Area state-waters Pacific cod harvest and effort by gear type, 1997–2013.	29
14. Pacific cod harvest and effort by statistical area from the Chignik Area state-waters season, 2013.	30
15. South Alaska Peninsula Area state-waters Pacific cod season openings by gear type, 1997–2013.	31
16. South Alaska Peninsula Area state-waters Pacific cod harvest and effort by gear type, 1997–2013.	33
17. Pacific cod harvest and effort by statistical area from the South Alaska Peninsula Area state-waters season, 2013.	34
18. Kodiak Area black rockfish jig season harvest, effort, and price per pound, 2013.	35
19. Chignik Area black rockfish jig season harvest, effort, and price per pound, 1990–2013.	36
20. South Alaska Peninsula Area Eastern District black rockfish jig season harvest, effort, and price per pound, 1990–2013.	37
21. Regulation and management development of the black rockfish fishery in the Kodiak, Chignik, and South Alaska Peninsula areas.....	38
22. Commercial jig harvest of black rockfish from Kodiak, Chignik, and South Alaska Peninsula areas by district, 2013.....	39
23. Lingcod harvest from Kodiak, Chignik, and South Alaska Peninsula areas, 1988–2013.	40
24. Central and Western Gulf of Alaska walleye pollock fishery openings, 2009–2013.	41
25. Walleye pollock harvest and effort in millions of pounds from the Central and Western Gulf of Alaska, 1995–2013.....	42

LIST OF FIGURES

Figure	Page
1. ADF&G and National Marine Fisheries Service groundfish reporting areas.	43
2. Pacific cod length frequency by area from the 2013 state-waters fisheries in Kodiak, Chignik, and South Alaska Peninsula areas.	44
3. Age composition of Pacific cod sampled from the 2013 state-waters fisheries in the Kodiak, Chignik, and South Alaska Peninsula areas.	44
4. Kodiak, Chignik, and South Alaska Peninsula black rockfish management areas and districts, 2013.	45
5. Size composition of black rockfish sampled from the 2013 Kodiak Area fishery.	46
6. Age composition of black rockfish sampled from the 2013 Kodiak Area fishery.	46
7. Chignik and South Alaska Peninsula areas non-pelagic trawl gear closures, 2013.	47
8. Kodiak Area non-pelagic trawl gear closures, 2013.	48
9. Karluk trawl closure, 2013.	49

LIST OF APPENDICES

Appendix	Page
A1. Frequently used acronyms and key words.	52
B1. Kodiak Management Area state-waters statistical areas for groundfish.	54
B2. Chignik Management Area state-waters statistical areas for groundfish.	55
B3. South Alaska Peninsula Area state-waters statistical areas for groundfish.	56

ABSTRACT

This report summarizes 2013 harvest, effort, and management of commercial state-waters and parallel groundfish fisheries managed by the Alaska Department of Fish and Game (ADF&G) in the Kodiak, Chignik, and South Alaska Peninsula areas. Principal state-waters fisheries include Pacific cod *Gadus macrocephalus* and black rockfish *Sebastes melanops*. The 2013 harvest of Pacific cod during state-waters fisheries totaled 31.57 million pounds from 180 vessels, for an estimated exvessel fishery value of \$8.27 million. Black rockfish, predominantly harvested in the Kodiak Area, totaled 141,226 pounds for an estimated exvessel value of \$63,500. During parallel fisheries, ADF&G adopts most seasons, bycatch limits, and allowable gear types established by the National Marine Fisheries Service for federal fisheries that occur in the adjacent exclusive economic zone. Walleye pollock *Gadus chalcogrammus* and Pacific cod are the dominant species harvested during parallel fisheries.

Key words: Kodiak, Chignik, South Alaska Peninsula, groundfish, Pacific cod, black rockfish, state-waters, parallel, commercial fisheries, exvessel, trawl, Annual Management Report, AMR

INTRODUCTION

This report provides an overview of commercial groundfish fisheries in the Kodiak, Chignik, and South Alaska Peninsula areas and summarizes commercial catch information and regulations that guide management of groundfish resources. Appendix A defines frequently used acronyms and key words associated with groundfish fisheries.

Commercial groundfish fisheries inside state waters (0–3 nmi) are managed by the Alaska Department of Fish and Game (ADF&G) under regulations developed by the Alaska Board of Fisheries (BOF). Management authority for commercial groundfish fisheries in the exclusive economic zone (EEZ; 3–200 nmi) off Alaska is delegated to National Marine Fisheries Service (NMFS) through the Magnuson–Stevens Fishery Conservation and Management Act (MSFCMA 2007). Federal commercial groundfish fisheries are prosecuted under guidelines developed by the North Pacific Fishery Management Council (NPFMC).

Several commercially important groundfish species managed by NMFS also occur inside state waters. ADF&G issues an annual emergency order (EO) establishing parallel groundfish seasons to facilitate consistency of state and federal regulations for specific transboundary species. The state adopts most NMFS rules during parallel fisheries such that seasons, allowable gear, bycatch limits, and inseason management actions mirror federal regulations of the adjacent federal fisheries unless superseded by BOF regulations. In 2013, 16 emergency orders were issued to regulate parallel and state-waters groundfish fisheries in the Kodiak, Chignik, and South Alaska Peninsula management areas (Table 2).

State-waters seasons occur when the State of Alaska establishes harvest quotas, seasons, or regulations independent of federal/parallel fisheries. State-waters seasons exist for Pacific cod *Gadus macrocephalus*, sablefish *Anoplopoma fimbria*, lingcod *Ophiodon elongates*, black rockfish *Sebastes melanops*, and dark rockfish *Sebastes ciliatus*. State-waters seasons for Pacific cod and sablefish are prosecuted exclusively within state waters of Alaska (0–3 nmi). The state has management authority from shore to the 200 nautical mile boundary of the EEZ for lingcod, dark rockfish, and black rockfish.

During 2013, Pacific cod and walleye pollock *Gadus chalcogrammus* made up the largest volume of groundfish harvested from state waters in the Kodiak, Chignik, and South Alaska Peninsula areas (Table 1). In state waters, all directed walleye pollock harvest occurred during parallel seasons, whereas Pacific cod were harvested during parallel and state-waters seasons.

PACIFIC COD

Pacific cod, considered a transoceanic species, are managed by NMFS as a single Gulf of Alaska (GOA) stock (Shimada and Kimura 1994). The 2013 GOA Pacific cod Acceptable Biological Catch (ABC) of 178,133,296 million pounds (A'mar et al. 2012) was apportioned 61 percent to the Central Gulf of Alaska (CGOA; 108.66 million pounds), 35 percent to the Western Gulf of Alaska (WGOA; 62.35 million pounds), and 4 percent to the Eastern Gulf of Alaska (EGOA 7.16 million pounds) federal management areas (Figure 1).

Within the CGOA and WGOA, the Pacific cod ABC is apportioned such that federal/parallel fisheries receive 75 percent of the annual ABC as total allowable catch (TAC) and further apportioned by gear and operation type. Annually, NMFS allocates 60 percent of the TAC to the A season, which begins January 1 for fixed gear vessels and January 20 for trawl vessels. The remaining 40 percent of the TAC is made available for the B season beginning September 1 for pot, longline, and trawl gear, and June 10 for jig gear. Twenty-five percent of the annual ABC is available for harvest in state-waters Pacific cod fisheries. State-waters Pacific cod guideline harvest levels in the Kodiak, Chignik, and South Alaska Peninsula areas are not further apportioned into A or B seasons.

The 2013 CGOA Pacific cod harvest, including federal, parallel and state-waters seasons, totaled 81.47 million pounds (Table 3), which was 25 percent under the CGOA ABC. Approximately 33 percent of the CGOA total harvest was taken from state waters of Alaska (Table 3). Total Pacific cod harvest from the WGOA during 2013 totaled 56.78 million pounds, approximately nine percent under the WGOA ABC. Approximately 45 percent of the total WGOA harvest was taken from state waters of Alaska.

PARALLEL SEASON

Background

ADF&G annually issues an emergency order establishing parallel Pacific cod seasons in state waters (0–3 nmi) of the Kodiak, Chignik, and South Alaska Peninsula management areas. Emergency orders establishing parallel Pacific cod seasons adopt most federal fishing regulations including season dates, gear, area closures, bycatch limits, or other regulations the commissioner determines reasonably necessary to accommodate federal fishery management measures in state waters. NMFS area closures, including closures for Steller sea lion (SSL) protection, are in effect during parallel fisheries. Federal seabird avoidance requirements are recognized by the state during parallel Pacific cod fisheries as are vessel monitoring system and catch reporting requirements. Vessels participating in parallel Pacific cod fisheries are not required to possess a Federal Fishing Permit or a License Limitation Program permit.

Beginning in 2012, management of federal Pacific cod fisheries in the CGOA and WGOA transitioned from derby style fisheries to gear sector allocations. Sectors were created for catcher-vessels (CV) and catcher-processors (CP) using longline, jig, and trawl gear, and a combined CV/CP sector was created for vessels using pot gear. Prior to sector management, all gear types competed and the federal/parallel Pacific cod season closed for all gear types upon achievement of the Pacific cod TAC. Apportionment of TAC into gear sectors results in different season length for each sector. In the CGOA and WGOA the trawl CV sector receives the largest annual Pacific cod allocation; however, little trawl effort for Pacific cod occurs in state waters because most state waters are closed to non-pelagic trawling.

2013 Central Gulf of Alaska Parallel Season

The CGOA parallel pot gear season opened January 1, 2013, and closed February 10, when the “A” season TAC was achieved. The CGOA parallel Pacific cod B season opened September 1 and closed by regulation on December 31, 2013. Harvest of Pacific cod by all gear types during the parallel fishery within the Kodiak Management Area in 2013 totaled 6.04 million pounds (Table 4). The majority of Pacific cod were harvested using pot gear (3.02 million pounds) and longline gear (2.89 million pounds).

The Chignik Management Area is predominantly located within the CGOA with a small portion within the WGOA federal management area (Figure 1). Most productive Pacific cod fishing grounds in the Chignik Area are closed to fishing during federal and parallel Pacific cod fisheries due to closures implemented in 2001 as part of the SSL Biological Opinion and Incidental Take Statement. As a result, Chignik Area parallel season Pacific cod harvests have generally been less than 500,000 pounds annually. In 2013 the total parallel Pacific cod harvest was 437,376 pounds (Table 5).

2013 Western Gulf of Alaska Parallel Season

The WGOA parallel pot gear season opened January 1, 2013 and closed on January 28, 2013 when the “A” season TAC was achieved. The WGOA B season opened September 1, 2013 and closed by regulation on December 31, 2013. Harvest of Pacific cod by all gear types during the 2013 South Alaska Peninsula Area parallel season totaled 9.58 million pounds (Table 6). The majority of Pacific cod were harvested by vessels using pot gear (7.85 million pounds).

STATE-WATERS SEASON

Background

The first state-waters Pacific cod seasons occurred in 1997 in the Kodiak, Chignik, and South Alaska Peninsula areas. State-waters Pacific cod management plans defined season dates, gear types, GHL allocation and rollover provisions, vessel registration requirements, and gear storage regulations for each management area (Table 7). Allowable gear types (pot, jig, and hand troll gear) and gear limits (60 pots, 5 jig machines) were the same across the three newly adopted management plans. Fishing season, vessel size and registration limits, GHL allocation and rollover, and gear storage were unique to each management area.

GHLs for each management area are set as a percentage of the annual federal Pacific cod ABC. State-waters GHLs were initially capped at 15 percent of the ABC established for the federal WGOA and CGOA management areas but were structured to increase incrementally to 20 percent and then 25 percent of federal ABCs if harvest in any year was within 10 percent of the established state-waters GHL. By 2003, each management area achieved the maximum GHL increment such that GHLs were fixed at 25 percent of the WGOA for the South Alaska Peninsula, 12.50 percent of the CGOA for the Kodiak Area, 8.75 percent of the CGOA for the Chignik Area, and 3.75 percent of the CGOA for the Cook Inlet Area.

2013 State-Waters Pacific Cod Season Overview

Approximately 31.6 million pounds of Pacific cod were harvested from Kodiak, Chignik, and South Alaska Peninsula areas by 180 vessels during 2013 state-waters seasons (Table 8). Total exvessel fishery value was approximately \$8.27 million. The 2013 harvest was less than the total

2012 Pacific cod state-waters catch by nearly 10 million pounds, and worth approximately \$6.50 million less (Table 8).

Kodiak Area

The 2013 Kodiak Area GHL was 13.58 million pounds. Pot and jig gear vessels were each allocated 50 percent of the total GHL, or 6.79 million pounds. Pot vessels larger than 58 feet in overall length were restricted before September 1 to 25 percent of the total state-waters GHL, or 3.39 million pounds. The state-waters season began February 17, 2013 (Table 9), seven days after the closure of the parallel CGOA Pacific cod “A” season for pot gear.

Total Pacific cod harvest from the 2013 Kodiak Area state-waters season was 7.28 million pounds taken by 88 vessels (Table 8). By gear type, pot gear vessels harvested 6.69 million pounds and jig vessels harvested 0.59 million pounds (Table 10). The estimated exvessel fishery value was \$1.88 million (Table 8). Fishermen harvested Pacific cod from 27 statistical areas during the season (Table 11). Most harvest occurred on the west side of Kodiak and Afognak islands, notably near Uganik/Veikoda bays (statistical area 535732), Uyak Bay (statistical areas 545734), and Cape Ikolik (statistical area 545703) on the west side of Kodiak Island (Table 11; Appendix B1).

Kodiak Pot Gear Season

A total of 34 pot vessels participated in the 2013 season, the lowest number of pot vessels since 2007. The harvest of 6.69 million pounds was below the pot gear allocation by approximately 102,000 pounds (1.5 percent). The exvessel value of the 2013 pot gear season was \$1.74 million based on an average price of \$0.26 per pound (Table 10).

The fleetwide daily pot harvest ranged from approximately 100,000 pounds to 230,000 pounds per day. Average daily catch by vessel was variable but increased throughout the season. From the season opening on February 17 to March 8, vessels averaged approximately 8,300 pounds per day. From March 9 through the season closure on April 2, vessels averaged approximately 13,600 pounds per day. Vessels over 58 feet in length accounted for approximately 44 percent of the total pot gear harvest. The season for all pot vessels closed April 2 when the pot gear GHL was projected to be attained (Table 9). The 2013 pot gear season was open for 44 days.

Kodiak Jig Gear Season

The Kodiak Area state-waters jig gear season for Pacific cod opened March 15, 2013, and closed by regulation on December 31, 2013. A total of 55 jig vessels landed 0.59 million pounds (Table 10). The exvessel fishery value for the Kodiak Area state-waters jig gear fishery totaled approximately \$0.15 million based on an average price of \$0.26 per pound.

The Kodiak jig season had variable effort and harvest. Average weekly harvest ranged from 0 to 172,000 pounds. From the end of March to the beginning of June, the number of landings per week ranged from 4 to 35 for a total of 166 landings. From the beginning of June through the end of the season, there were a total of 13 landings. Vessel operators reported poor availability of cod in state waters contributing to low harvest and effort in 2013.

Allocation Rollover

Several provisions in the *Kodiak Area Pacific Cod Management Plan* (5 AAC 28.467) provide additional harvest opportunity if ADF&G determines GHLS will not be attained by the regulatory closure date of December 31. The management plan allows unharvested GHL to be

taken by either pot or jig gear after closure of the federal CGOA pot gear B season. Although a large amount of jig GHL remained unharvested, the season could not reopen for pot gear because the CGOA pot gear B season did not close. Therefore, the jig season remained open, and the exclusive registration requirement for Kodiak jig was lifted on October 29 (Table 9).

Chignik Area

The 2013 Chignik Area GHL was 9.50 million pounds. The pot gear season opens seven days after closure of the federal CGOA pot gear A season or March 7, whichever is later, and the jig gear season opens by regulation on March 15 (Table 12). Vessels using pot gear were allocated 90 percent of the GHL, or 8.60 million pounds. Vessels using jig gear were allocated 10 percent, or 0.95 million pounds (Table 13).

The total 2013 Chignik Area state-waters season Pacific cod harvest was 8.71 million pounds taken by 19 vessels (Table 8). By gear type, 19 pot vessels harvested the entire 8.71 million pounds; there was no jig effort in 2013 (Table 13). The estimated exvessel fishery value was \$2.16 million (Table 8). Most harvest occurred in statistical areas around Mitrofanian Island (585531) and Semidi Islands (565602), and near Chiginagak Bay (565633; Table 14; Appendix B2).

Chignik Pot Gear Season

The 2013 federal CGOA Pacific cod season closed February 10; therefore, the Chignik Area state-waters Pacific cod season opened March 7. A total of 19 vessels participated in the 2013 season, down from recent seasons (Table 13). Despite fewer vessels, the fleet averaged approximately 400,000 pounds per day, the third highest since 1997. The pot gear season was also the third fastest season since 1997, lasting 22 days. Catch was primarily delivered to a floating processor located in the Chignik Area, although approximately 20 percent of the landings were tendered to shore-based processors outside of the Chignik Area.

Allocation Rollover

Several provisions in the *Chignik Area Pacific Cod Management Plan* (5 AAC 28.537) provide additional harvest opportunity if ADF&G determines the GHL will not be attained by the regulatory closure date of December 31. The management plan allows unharvested GHL to be taken by either pot or jig gear after closure of the federal CGOA pot gear “B” season. While the entire jig GHL remained unharvested, the pot gear season could not reopen because the CGOA pot gear B season did not close.

South Alaska Peninsula Area

The 2013 South Alaska Peninsula Area GHL was 15.58 million pounds. The state-waters pot gear season opens seven days after closure of the federal WGOA Pacific cod pot gear sector A season or March 7, whichever is later (Table 15). In addition, if the National Weather Service (NWS) marine forecast for the scheduled opening date or the following day includes a gale warning, the season opening will be delayed for 24 hours. If gale warnings persist in the NWS marine forecast after the initial weather delay, the season will continue to be delayed on a 24-hour basis for seven days beyond the initial opening date, when the season will open regardless of gale warning forecast. Vessels using pot gear were allocated 85 percent of the total GHL, or 13.25 million pounds, and vessels using jig gear were allocated 15 percent of the GHL, or 2.34 million pounds (Table 16). The state-waters jig season opens 48 hours after closure of the federal WGOA jig gear A season; however, if the federal jig season has not closed by March 15, the

state-waters season may open based on remaining federal quota or inseason assessment of effort or harvest rate

The 2013 total state-waters season Pacific cod harvest was 15.58 million pounds taken by 74 vessels (Table 8). By gear type, pot vessels harvested 13.38 million pounds and jig vessels harvested 2.20 million pounds (Table 16). The estimated exvessel fishery value was \$4.23 million (Table 8). Harvest occurred in 28 distinct statistical areas during the 2013 state-waters season (Table 17). Notable harvests occurred around the Shumagin Islands (statistical areas 605502 and 605504), near Sanak Island (statistical area 625401), and south of Unalaska Island (statistical area 665302; Table 17 and Appendix B3).

South Alaska Peninsula Pot Gear Season

Because the 2013 federal WGOA Pacific cod season closed January 28, the South Alaska Peninsula Area state-waters Pacific cod season was scheduled to open March 7 but was delayed by weather until March 9. A total of 37 vessels participated in the fishery, the lowest number of vessels since 1997 (Table 17). The total pot gear harvest of 13.38 million pounds exceeded the pot gear allocation by approximately 136,000 pounds (1 percent; Table 16). The preliminary exvessel value of the pot gear season was \$3.61 million based on an initial average price of \$0.27 per pound. The season was open for only 13 days, which was the shortest season since the first state-waters season in 1997 (Table 15).

South Alaska Peninsula Jig Gear Season

The 2013 jig gear season opened on March 15, 2013. Thirty-eight jig vessels harvested 2.20 million pounds for an estimated exvessel value of \$594,000, based on an initial price of \$0.27 per pound (Table 16). For the first month of the season, effort and harvest were relatively consistent, with weekly harvests ranging from approximately 28,000 pounds to 75,000 pounds. Beginning in mid-April, weekly harvest increased and remained stable at approximately 150,000 pounds per week through mid-June, when effort and harvest declined to less than 100,000 pounds per week. The decline in effort and harvest is likely due to a portion of the fleet transitioning from jig fishing to salmon fishing. The state-waters jig season closed July 16 when the GHL was achieved.

Pacific Cod Harvest Monitoring and Dockside Sampling

During the 2013 season, daily harvest reports were obtained from vessel operators using pot gear. Harvest reports included the daily number of pots pulled, pounds retained, and fishing location for each vessel. Processor and vessel catch reports were subsequently referenced against landing data derived from the Interagency Electronic Reporting System (eLandings) to track daily catch and forecast harvests.

Dockside sampling was conducted in the port of Kodiak throughout the state-waters season and in Sand Point and King Cove during periods of high fishing effort. Dockside samplers conducted confidential interviews with vessel operators to obtain information on catch location, catch per unit effort, and bycatch. Samplers also collected data on fish length, weight, sex, reproductive status, and age.

Dockside sampling staff in Kodiak, King Cove, and Sand Point conducted 75 skipper interviews and collected biological samples from 89 deliveries from the Kodiak, Chignik, and South Alaska Peninsula management areas. During 2013, samplers collected 4,598 fish lengths, 1,560

individual fish weights, and observations of sex and maturity, and extracted 1,560 otolith pairs for aging.

Average Pacific cod length was 65 cm in Kodiak, 64 cm in Chignik, and 63 cm in South Alaska Peninsula area (Figure 2). Preliminary analysis indicates the age of Pacific cod sampled from the 2013 harvest ranged from 3 to 8 years. Pacific cod were predominantly age 5 or 6 for all areas (Figure 3).

BLACK ROCKFISH

BACKGROUND

Beginning in 1998, NMFS relinquished management of black rockfish within the EEZ of the GOA and transferred management authority to ADF&G. That year ADF&G began assigning GHLS to state groundfish management areas within the CGOA to better distribute effort and discourage localized fishing effort. The initial GHL for the Kodiak Area was set at 190,000 pounds (Table 18) and further divided into seven districts, each with separate GHLS (Figure 4). The Chignik and South Alaska Peninsula Area Eastern District GHLS were established at 100,000 pounds each (Tables 19 and 20). Since 2008, the BOF has provided further structure to black rockfish fishery regulations through registration requirements, trip limits and bycatch amounts (Table 21).

2013 BLACK ROCKFISH OVERVIEW

The black rockfish fishery in the Kodiak, Chignik and South Alaska Peninsula areas opened January 1, 2013. GHLS were attained in four districts in Kodiak Area. GHLS were not met in the South Alaska Peninsula or Chignik areas.

Kodiak Area Fishery

The 2013 Kodiak Area black rockfish GHL totaled 135,000 pounds distributed across five management districts (Table 22). Effort and harvest primarily occurred in the Northeast, Eastside, and Afognak districts from March through May. A total of 20 vessels harvested 141,226 pounds of black rockfish (Table 18). The exvessel value of the fishery was approximately \$64,000 based on an average price of \$0.45 per pound.

Chignik Area Fishery

The 2013 Chignik Area black rockfish GHL was 100,000 pounds. Harvest was capped at 45,000 pounds per district to distribute harvest throughout the management area. No vessels participated in the fishery in 2013 (Table 19). Processor interest and market availability probably limited participation in the fishery.

South Alaska Peninsula Area Eastern District Fishery

The South Alaska Peninsula Area Eastern District black rockfish GHL was 75,000 pounds. Two vessels made four landings in 2013 (Table 20). All harvest information is confidential because there were fewer than three participants.

Black Rockfish Harvest Monitoring

Black rockfish harvests are monitored through fish ticket records, vessel registrations, and dockside sampling of commercial catches. Information collected by dockside samplers includes

fishing location and effort (days fished) as well as fish length, weight, sex, and reproductive maturity. Additionally, otoliths are collected for age determination. Due to limited participation in the Chignik and South Alaska Peninsula areas, 2013 black rockfish dockside data collection was limited to the Kodiak Area.

Black rockfish sampled from landings in the Kodiak Area during 2013 averaged 48 cm in length (Figure 5). Otoliths were collected from 832 black rockfish for aging and ranged from 5 to 50 years. The five most predominant age classes (9, 11, 16, 17, and 34) made up nearly 50% of the black rockfish aged (Figure 6).

SABLEFISH

Sablefish in state waters are managed separately from the federal sablefish individual fishing quota program. Known habitat for mature sablefish is limited in most state waters. Most sablefish are typically associated with deeper waters near the continental shelf, and abundance is low inside state waters east of Unimak Pass.

The BOF prohibited directed state-waters sablefish fisheries in the Kodiak and Chignik areas in 2002 and in the Eastern District of South Alaska Peninsula Area in 2003. Since that time, sablefish may only be retained as bycatch to other commercial groundfish fisheries. Sablefish bycatch is managed by NMFS under federal rules, which are adopted inside state waters by ADF&G through the global groundfish EO. The 2013 sablefish bycatch harvest in state waters of the Kodiak Area totaled 2,061 pounds (Table 1). There was no harvest in the Chignik Area, and harvest from the South Peninsula Eastern District is confidential.

LINGCOD

Commercial regulations in the Kodiak and Chignik areas prohibit retention of lingcod prior to July 1 and require retained lingcod to be a minimum of 35 inches in total length. These regulations are designed to prevent commercial exploitation during nest-guarding and ensure only mature fish are harvested. The South Alaska Peninsula Area is believed to be the western boundary of lingcod distribution range (Mecklenburg et al. 2002); therefore, seasonal retention and size limit regulations are not in place to further limit harvest.

Mechanical jigging machine and hand troll gear may be used to target lingcod. Since 1988, harvests of lingcod in the Kodiak, Chignik, and South Alaska Peninsula areas have generally remained below 100,000 pounds annually, and most harvest occurs as bycatch in other commercial groundfish fisheries. During 2008, harvest increased considerably to 521,259 pounds largely due to increased retention by trawl vessels (Table 23). In response, ADF&G reduced the allowable lingcod bycatch rate from 20 percent to five percent prior to the start of the 2009 season. Since that time, harvest has ranged from approximately 63,000 pounds to 158,000 pounds.

PARALLEL WALLEYE POLLOCK FISHERIES

State waters are opened for parallel walleye pollock seasons concurrent with adjacent federal seasons. Annual harvest quotas are released in four openings, although in some areas, more than one opening occurred within a season to ensure the full seasonal allocation was harvested (Table 24). Walleye pollock were primarily harvested by vessels using pelagic trawl gear.

In 2013, harvest of walleye pollock by vessels using trawl gear totaled 183 million pounds in the CGOA and 16.8 million pounds in the WGOA (Table 25). Approximately 14 percent of the total 2013 CGOA walleye pollock harvest and 57 percent of the total 2013 WGOA harvest occurred in state waters.

NON-PELAGIC TRAWL CLOSURES

The history of non-pelagic trawl closures around Kodiak Island and along the Alaska Peninsula is variable. Generally, bays have been closed year-round since 1986. Additional changes occurred in 1994 and 1995 when the BOF opened state waters to non-pelagic trawling near Castle Rock and Sanak Island in the South Alaska Peninsula Area (Figure 7). Non-pelagic trawling was considered again during 1999 in response to public proposals that sought to close all state waters within the Kodiak and Chignik areas to non-pelagic trawling. The BOF adopted the proposals with the exception of an area along the west side of Kodiak Island, which remains open on a seasonal basis (Figure 8). Seasonal openings were designed to allow non-pelagic trawl vessels access to flatfish resources during parallel fisheries. The remainder of state waters within the Kodiak and Chignik areas were closed to non-pelagic trawl gear.

In response to concern over incidental king salmon harvest in trawl fisheries, the BOF adopted a proposal at the 2011 Kodiak finfish BOF meeting closing a portion the west side of Kodiak Island to trawl gear approximately 3 miles on either side of the mouth of Karluk River (Figure 9).

REFERENCES CITED

- A'mar, T., G. Thompson, M. Martin, and W. Palsson. 2012. Assessment of the Pacific cod stock in the Gulf of Alaska. [In] Plan team for the groundfish fisheries of the Gulf of Alaska (compiler). Stock assessment and fishery evaluation report for the groundfish resources of the Gulf of Alaska. North Pacific Fishery Management Council, Anchorage.
- Mecklenburg, C. W., T. A. Mecklenburg, and L. K. Thorsteinson. 2002. Fishes of Alaska. American Fisheries Society, Bethesda, Maryland.
- MSFCMA (Magnuson–Stevens Fishery Conservation and Management Act). 2007. Magnuson–Stevens Fishery Conservation and Management Act as amended through January 12, 2007. U. S. Department of Commerce, NOAA Technical Memorandum.
- Shimada, A. M., and D. K. Kimura. 1994. Seasonal movements of Pacific cod (*Gadus macrocephalus*) in the eastern Bering Sea and adjacent waters based on tag-recapture data. U.S. National Marine Fisheries Service, Fishery Bulletin 92:800-816.

TABLES AND FIGURES

Table 1.—Top 30 species taken as directed fishery or bycatch, by total weight as reported on groundfish fish tickets, from state waters of Kodiak, Chignik, and South Alaska Peninsula groundfish management areas, 2013.

Species	Kodiak	Chignik	South Alaska Peninsula	Total Weight (Pounds)
Pacific cod	13,317,633	9,152,975	25,166,696	47,637,304
Walleye pollock	25,299,868	547,577	9,583,864	35,431,309
Pacific Halibut	1,184,351	289,894	743,289	2,217,534
Arrowtooth flounder	406,141	3,708	66,095	475,944
Longnose skate	159,234	Confidential	888	160,122
Big skate	153,299	0	Confidential	153,299
Flathead sole	58,471	2,058	87,444	147,973
Black rockfish	124,861	66	2,033	126,960
Octopus spp.	63,701	1,248	49,106	114,055
Lumpsucker	14,650	5,896	81,302	101,848
Squid spp.	69,559	Confidential	53	69,613
Dusky rockfish	25,415	Confidential	65	25,480
Rock sole	8,745	0	3,282	12,027
Eulachon	7,731	Confidential	1,423	9,154
Rex sole	7,595	Confidential	136	7,731
Dark rockfish	7,459	0	0	7,459
Chinook salmon	5,798	167	1,404	7,369
Lingcod	4,397	Confidential	0	4,397
Jellyfish spp.	Confidential	Confidential	4,385	4,420
Sablefish	2,061	0	Confidential	2,061
Yelloweye rockfish	3,392	254	260	3,906
Starry flounder	Confidential	0	12	12
Sculpin spp.	1,843	22	879	2,744
English sole	1,659	Confidential	360	2,019
Skate spp.	629	Confidential	1,401	2,030
Pacific Ocean Perch	1,488	Confidential	102	1,589
Chum salmon	1,158	0	328	1,486
Capelin	1,324	0	143	1,467
Rougheye rockfish	542	655	90	1,286
Butter sole	1,278	0	0	1,278

Notes: Weight reported in whole fish pounds; discards at sea excluded. Data are confidential when fewer than 3 vessels or processors participated.

Table 2.—Groundfish emergency orders issued for the Kodiak, Chignik, and South Alaska Peninsula management areas, 2013.

Emergency Order	Effective Date	Explanation
4-GF-01-13	January 1, 2013	Established parallel commercial groundfish fishing seasons and bycatch limits in the Kodiak, Chignik, and South Alaska Peninsula, Bering Sea-Aleutian Islands, and Chukchi-Beaufort areas.
4-GF-02-13	February 17, 2013	Opened Kodiak Area state-waters Pacific cod season to pot gear.
4-GF-04-13	March 15, 2013	Opened Kodiak Area state-waters Pacific cod season to jig gear. Closed CGOA parallel cod jig A season.
4-GF-05-13	March 15, 2013	Opened South Peninsula Area state-waters Pacific cod season to jig gear. Closed WGOA parallel cod jig A season.
4-GF-06-13	March 22, 2013	Closed South Peninsula Area state-waters Pacific cod season to pot gear.
4-GF-08-13	March 29, 2013	Closed Chignik Area state-waters Pacific cod season to pot gear.
4-GF-09-13	April 2, 2013	Closed Kodiak Area state-waters Pacific cod season to pot gear.
4-GF-11-13	April 23, 2013	Closed the directed black rockfish fishery in the Kodiak Area Northeast District.
4-GF-12-13	April 30, 2013	Closed the directed black rockfish fishery in the Kodiak Area Eastside District.
4-GF-13-13	May 1, 2013	Closed the directed black rockfish fishery in the Kodiak Area Afognak District.
4-GF-14-13	May 6, 2013	Closed the directed black rockfish fishery in the Kodiak Area Southeast District.
4-GF-15-13	May 13, 2013	Increased the retained bycatch amount of black rockfish to 20 percent for jig gear in the Kodiak Area Afognak District.
4-GF-17-13	July 16, 2013	Closed South Peninsula Area state-waters Pacific cod season to jig gear. Opened WGOA parallel cod jig B season.
4-GF-18-13	August 15, 2013	Increased trip limit to 7,000 lbs for black rockfish in the Westside district of the Kodiak Area.
4-GF-20-13	October 26, 2013	Decreased the retained bycatch amount of black rockfish to 5 percent in the Kodiak Area Northeast District.
4-GF-21-13	October 29, 2013	Closed and re-opened the Kodiak Area state-waters Pacific cod jig season as a non-exclusive registration area.

Notes: Omitted emergency orders (e.g., 4-GF-3-13) enacted for management areas outside of Kodiak, Chignik, and South Alaska Peninsula. GHL = guideline harvest level, CGOA = Central Gulf of Alaska, WGOA = Western Gulf of Alaska.

Table 3.–Pacific cod harvest, in millions of pounds, from Central and Western Gulf of Alaska Management areas, 1990–2013.

NMFS Area	Year	Federal Waters		State Waters		Total	Discards	
		Harvest	% of Total	Harvest	% of Total	Harvest	ABC	at sea
Central GOA	1990	79.79	87	11.82	13	91.61	130.95	0.58
	1991	81.24	81	19.55	19	100.79	106.48	0.51
	1992	73.12	82	16.53	18	89.65	85.40	0.46
	1993	60.31	84	11.60	16	71.91	77.50	0.66
	1994	50.28	80	12.89	20	63.16	68.89	0.81
	1995	72.84	77	21.76	23	94.60	100.69	0.79
	1996	71.93	81	16.76	19	88.70	94.58	3.22
	1997	76.64	76	24.59	24	101.24	113.20	1.83
	1998	72.63	74	24.90	26	97.53	108.20	0.39
	1999	71.03	68	34.08	32	105.11	117.22	0.17
	2000	56.32	72	21.71	28	78.03	96.01	0.45
	2001	50.00	78	14.08	22	64.08	85.20	0.80
	2002	42.44	70	18.18	30	60.62	69.84	1.11
	2003	41.97	68	20.14	32	62.11	64.02	0.99
	2004	47.26	66	24.19	34	71.45	78.93	0.49
	2005	38.94	62	24.00	38	62.94	73.01	0.24
	2006	37.21	63	22.29	37	59.50	83.49	0.14
	2007	43.56	65	22.98	35	66.54	83.49	0.41
	2008	45.23	64	25.85	36	71.07	83.56	1.16
	2009	35.34	60	23.68	40	59.02	69.50	1.16
	2010	63.34	64	35.74	36	99.08	108.10	0.94
	2011	66.87	60	44.86	40	111.73	118.64	0.48
	2012	67.86	59	47.48	41	115.34	125.53	0.44
	2013	54.63	67	26.84	33	81.47	108.66	0.88
NMFS Area	Year	Federal Waters		State Waters		Total	Discards	
		Harvest	% of Total	Harvest	% of Total	Harvest	ABC	at sea
Western GOA	1990	72.20	85	13.13	15	85.33	65.48	0.74
	1991	71.95	94	4.29	6	76.24	56.67	0.32
	1992	59.73	82	13.15	18	72.87	51.80	0.74
	1993	37.90	95	1.88	5	39.78	41.25	0.18
	1994	24.88	77	7.32	23	32.20	36.67	0.15
	1995	35.68	80	8.99	20	44.67	44.24	0.20
	1996	35.28	73	12.92	27	48.20	41.56	0.29
	1997	47.34	71	19.55	29	66.88	62.89	0.37
	1998	39.98	69	18.06	31	58.04	60.11	0.08
	1999	39.73	65	21.16	35	60.90	65.12	0.04
	2000	33.73	55	27.90	45	61.63	60.64	0.07
	2001	23.02	54	19.97	46	42.99	53.81	0.03
	2002	26.32	55	21.22	45	47.54	49.52	0.07
	2003	17.55	40	25.93	60	43.48	45.40	0.07
	2004	17.11	38	28.16	62	45.27	49.85	0.05
	2005	16.49	43	22.29	57	38.77	46.11	0.05
	2006	11.23	29	27.74	71	38.96	59.21	0.07
	2007	15.83	42	22.31	58	38.14	59.21	0.05
	2008	21.53	50	21.47	50	43.00	57.17	0.06
	2009	17.11	40	23.24	60	40.35	47.50	0.05
	2010	26.00	44	33.16	56	59.16	61.00	0.36
	2011	28.42	44	36.63	56	65.05	66.98	0.10
	2012	31.18	55	25.59	45	56.77	61.80	0.70
	2013	31.37	55	25.41	45	56.78	62.35	0.12

Notes: Weights are reported in whole fish pounds. Discards at sea excluded from all columns except the *Discards at sea* column. State and federal harvests may not add to total due to rounding. GOA = Gulf of Alaska, ABC = Acceptable Biological Catch, NMFS = National Marine Fisheries Service.

Table 4.–Kodiak Area Pacific cod harvest by gear type, during parallel Pacific cod seasons, 1997–2013.

Year	Gear Type				Total
	Pot	Longline	Trawl	Jig	
1997	8,500,650	1,894,214	857,688	527	11,253,078
1998	4,998,323	2,166,232	799,570	27,246	7,991,371
1999	8,176,521	2,579,782	1,226,554	27,963	12,010,819
2000	4,459,508	3,576,747	247,475	79,365	8,363,095
2001	2,800,868	2,283,509	213,454	22,414	5,320,245
2002	2,324,281	1,308,531	270,407	5,926	3,909,144
2003	3,104,572	2,699,156	428,503	16,045	6,248,277
2004	2,329,223	3,856,746	498,690	244,600	6,929,260
2005	3,890,960	3,507,804	366,751	298,326	8,063,841
2006	4,429,520	5,422,239	398,582	190,037	10,440,378
2007	5,018,241	3,409,431	162,169	68,655	8,658,495
2008	3,317,365	1,950,257	305,023	38,267	5,610,912
2009	2,741,107	2,907,995	139,002	70,971	5,859,075
2010	5,142,268	3,316,265	115,026	232,643	8,806,202
2011	7,804,342	4,746,357	108,124	1,081,094	13,739,917
2012	6,422,220	8,175,500	32,606	783,464	15,413,790
2013	3,021,936	2,889,648	58,691	66,811	6,037,086

Note: Weights are reported in whole fish pounds; discards at sea are excluded.

Table 5.—Chignik Area Pacific cod harvest by gear type, during parallel Pacific cod seasons, 1997–2013.

Year	Gear Type				Total
	Pot	Longline	Trawl	Jig	
1997	Confidential - All Gear Types				651,504
1998	Confidential - All Gear Types				541,455
1999	Confidential - All Gear Types				864,639
2000	Confidential - All Gear Types				431,507
2001	Confidential - All Gear Types				173,650
2002	Confidential - All Gear Types				291,263
2003	Confidential - All Gear Types				290,633
2004	Confidential - All Gear Types				209,655
2005	Confidential - All Gear Types				91,070
2006	Confidential - All Gear Types				117,405
2007	Confidential - All Gear Types				39,178
2008	Confidential - All Gear Types				207,822
2009	239,584	58,092	0	0	297,676
2010	Confidential - All Gear Types				626,746
2011	258,963	92,626	Confidential	Confidential	351,589
2012	Confidential	10,763	37,626	39,356	87,745
2013	395,052	22,306	20,018	0	437,376

Note: Weights are in reported whole fish pounds; discards at sea excluded. Data are confidential in cases where fewer than 3 vessels participated. Confidential data are included in total 1997-2008 and 2010 but not included in total 2011-2012.

Table 6.—South Alaska Peninsula Area Pacific cod harvest by gear type, during parallel Pacific cod seasons, 1997–2013.

Year	Gear Type				Total
	Pot	Longline	Trawl	Jig	
1997	2,068,400	32,625	7,758,378	Confidential	9,859,403
1998	4,205,388	522,328	3,867,782	Confidential	8,595,498
1999	3,279,793	33,718	5,308,250	0	8,621,761
2000	5,699,112	232,219	6,698,838	11,499	12,641,669
2001	3,272,010	52,169	2,424,221	340,092	6,088,493
2002	6,051,920	30,128	666,876	410,586	7,159,510
2003	12,966,344	57,549	310,013	92,528	13,426,433
2004	12,887,904	29,004	945,983	397,922	14,260,813
2005	6,175,670	562,770	2,835,871	101,375	9,675,687
2006	9,286,910	228,880	6,366,015	Confidential	15,881,805
2007	6,559,997	424,651	2,483,748	3,300	9,471,696
2008	6,387,463	623,306	863,671	114,599	7,989,039
2009	8,054,281	2,302,215	654,176	417,515	11,428,188
2010	13,229,552	1,600,965	1,691,696	763,299	17,285,512
2011	17,487,423	370,627	765,222	503,458	19,126,729
2012	5,720,700	357,719	2,761,687	567,920	9,408,026
2013	7,851,502	354,910	700,882	674,576	9,581,870

Note: Weights are reported in whole fish pounds; discards at sea excluded. Data are confidential in cases where fewer than 3 vessels participated. Total whole fish pounds do not include confidential data.

Table 7.—Regulatory development of state-waters and parallel Pacific cod seasons in the Kodiak, Chignik, and South Alaska Peninsula areas.

YEAR	REGULATION
1996	<ul style="list-style-type: none"> • Alaska Board of Fisheries adopts state-waters Pacific cod management plans for Kodiak, Chignik, and South Alaska Peninsula (SAP) areas. • All areas established as exclusive registration for state-waters season. • Gear restricted to mechanical jigging machines (5 machines), hand troll, or pots (60 pots). • Kodiak and SAP open 14 days after federal closure; Chignik opens April 15. • Vessel size restricted to 58' in Chignik and SAP. • Jig/pot allocation (50:50) in Kodiak; no allocation by gear type in Chignik or SAP. • GHL allocation rollover September 1 in Kodiak. Gear limits and exclusive registration may be removed October 31 in all areas; vessel size limits may be removed October 31 for Chignik and SAP.
1997	<ul style="list-style-type: none"> • Prosecution of first state-waters Pacific cod fishery in Kodiak, Chignik and SAP areas.
1998	<ul style="list-style-type: none"> • Kodiak and SAP change opening date to 7 days after federal closure. • Chignik opening date changed to April 1. • SAP adopts allocation rollover September 1. • SAP caps pot harvest at 85% of the guideline harvest level (GHL).
1999	<ul style="list-style-type: none"> • Chignik opening date changed to April 15. • Chignik GHL allocation (jig/pot) established at 15% jig and 85% pot. • Chignik adopts allocation rollover on August 15. • Chignik Area changed to superexclusive registration. • Kodiak adopts large vessel (> 58') cap of 25% of GHL prior to September 1.
2001	<ul style="list-style-type: none"> • State regulation adopted recognizing most Steller sea lion haulouts during parallel Pacific cod, walleye pollock and Atka mackerel seasons.
2002	<ul style="list-style-type: none"> • Vessel monitoring system (VMS) rules implemented during parallel Pacific cod, walleye pollock, and Atka mackerel seasons. • Pot storage requirement liberalized in Kodiak and Chignik areas for transition between parallel and state-waters seasons. • Chignik opening date changed to March 1.
2004	<ul style="list-style-type: none"> • Pot storage liberalized in SAP Area for transition between parallel and state-waters seasons.
2005	<ul style="list-style-type: none"> • Chignik allocation (jig/pot) allocation changed in Chignik (10:90).
2007	<ul style="list-style-type: none"> • SAP adopts 24-hour weather delay prior to fishery opening. • SAP mandatory inseason catch reporting by vessels. • SAP Area registration requirements changed, prohibiting fishing in another groundfish fishery outside of SAP and a portion of the Chignik Area.
2010	<ul style="list-style-type: none"> • SAP adopts 58' vessel size limit for parallel Pacific cod fishery.
2011	<ul style="list-style-type: none"> • Chignik adopts 58' vessel size limit for parallel Pacific cod fishery. • Coordinate Kodiak, Chignik, SAP state-waters Pacific cod management plans to accommodate federal Pacific cod gear sector allocations.

-continued-

Table 7.–Page 2 of 2.

YEAR	REGULATION
2012	<ul style="list-style-type: none"> • Kodiak state-waters Pacific cod season for pot gear opens seven days after closure of the federal Central Gulf of Alaska (CGOA) pot sector A season. Jig season opens 48 hours after federal CGOA jig A season closes. • Chignik state-waters Pacific cod pot gear season opens seven days after closure of the federal CGOA pot sector A season, or March 7 whichever is later. • SAP state-waters Pacific cod pot gear season opens seven days after closure of the federal WGOA pot sector A season, or March 7 whichever is later, unless delayed by weather. • Kodiak, Chignik and SAP jig seasons will close June 8 or later to allow federal jig B season to open, based on inseason assessment of effort, harvest rate, or remaining quota.

Note: SAP = South Alaska Peninsula, GHL = Guideline Harvest Level, CGOA = Central Gulf of Alaska, WGOA = Western Gulf of Alaska.

Table 8.—Harvest, effort, and value from Kodiak, Chignik, and South Alaska Peninsula areas state-waters Pacific cod seasons, 2000–2013.

	Year	Vessels	Landings	GHL ^a	Pounds Harvested ^b	Price Per Pound ^c	Fishery Value ^d
Kodiak Area							
	2000	204	1,707	12.0	8,562,816	\$0.39	\$3,335,844
	2001	103	669	10.6	4,843,741	\$0.34	\$1,638,642
	2002	82	552	8.7	8,825,851	\$0.29	\$2,556,887
	2003	128	837	8.0	8,154,867	\$0.33	\$2,685,922
	2004	156	1,122	9.9	10,033,889	\$0.31	\$3,102,824
	2005	158	1,011	9.1	8,548,163	\$0.32	\$2,734,882
	2006	113	646	10.4	6,330,518	\$0.42	\$2,657,285
	2007	95	643	10.4	6,406,965	\$0.51	\$3,278,695
	2008	111	988	10.4	10,548,875	\$0.59	\$6,217,710
	2009	130	971	8.7	8,591,477	\$0.32	\$2,233,575
	2010	114	880	13.5	13,566,306	\$0.28	\$3,796,186
	2011	161	1,165	14.8	15,267,869	\$0.35	\$4,116,248
	2012	180	1,354	15.7	15,391,019	\$0.38	\$5,850,754
	2013	88	441	13.6	7,277,324	\$0.26	\$1,876,928
Chignik Area							
	2000	25	163	6.7	1,794,759	\$0.30	\$538,414
	2001	26	179	6.0	2,648,655	\$0.26	\$688,645
	2002	25	199	4.9	4,227,547	\$0.20	\$832,946
	2003	28	257	4.5	4,467,571	\$0.27	\$1,206,244
	2004	28	297	5.8	5,750,461	\$0.23	\$1,322,156
	2005	22	248	6.4	5,787,467	\$0.25	\$1,446,687
	2006	12	202	7.3	3,439,521	\$0.34	\$1,169,437
	2007	16	242	7.3	5,699,461	\$0.45	\$2,564,576
	2008	23	262	7.3	6,838,934	\$0.56	\$3,829,803
	2009	11	122	6.1	5,679,678	\$0.24	\$1,363,034
	2010	16	160	9.5	9,153,719	\$0.24	\$2,195,007
	2011	32	244	10.4	10,346,856	\$0.32	\$3,115,384
	2012	25	202	11.0	10,473,154	\$0.35	\$3,693,380
	2013	19	191	9.5	8,712,190	\$0.25	\$2,163,069
South Alaska Peninsula Area							
	2000	90	650	15.1	15,044,104	\$0.30	\$4,476,218
	2001	121	727	13.4	13,464,020	\$0.25	\$3,362,729
	2002	107	598	12.4	12,716,258	\$0.22	\$2,792,697
	2003	92	604	11.4	11,560,663	\$0.27	\$3,117,330
	2004	88	595	12.5	12,514,240	\$0.23	\$2,869,261
	2005	73	528	11.5	11,436,172	\$0.25	\$2,846,795
	2006	54	386	14.8	11,739,736	\$0.36	\$4,215,888
	2007	60	465	14.8	12,678,151	\$0.47	\$5,940,742
	2008	97	700	14.3	13,302,050	\$0.57	\$7,547,258
	2009	72	514	11.9	11,594,124	\$0.26	\$3,011,443
	2010	69	534	15.3	15,288,266	\$0.25	\$3,877,227
	2011	82	551	16.7	16,806,305	\$0.30	\$4,905,994
	2012	95	644	15.5	15,356,768	\$0.34	\$5,201,332
	2013	74	529	15.6	15,583,345	\$0.27	\$4,227,984

-continued-

Table 8.—Page 2 of 2.

	Year	Vessels	Landings	GHL ^a	Pounds Harvested ^b	Price Per Pound ^c	Fishery Value ^d
Total							
	2000	314	2,519	33.8	25,401,678	\$0.33	\$8,350,476
	2001	246	1,574	30.0	20,956,415	\$0.27	\$5,690,016
	2002	209	1,348	26.0	25,769,656	\$0.23	\$6,182,531
	2003	248	1,698	23.9	24,183,101	\$0.28	\$7,009,496
	2004	272	2,014	28.2	28,298,589	\$0.26	\$7,294,241
	2005	253	1,787	27.0	25,771,801	\$0.27	\$7,028,363
	2006	180	1,234	32.5	21,509,775	\$0.37	\$8,042,610
	2007	232	1,348	32.5	24,817,369	\$0.47	\$11,784,013
	2008	230	1,939	32.0	30,671,115	\$0.57	\$17,594,770
	2009	213	1,608	26.7	25,866,831	\$0.27	\$6,608,052
	2010	199	1,574	38.3	38,008,291	\$0.26	\$9,868,420
	2011	275	1,959	41.9	42,421,030	\$0.32	\$12,137,626
	2012	300	2,200	42.2	41,220,940	\$0.36	\$14,745,466
	2013	180	1,161	38.7	31,572,859	\$0.26	\$8,267,981

Note: Weights are in whole fish pounds; discards at sea are excluded. Totals by area may not match number of vessels by gear type in Tables 10, 12, and 16 because a vessel may have used more than one gear type.

^a GHL = guideline harvest level (millions of pounds).

^b Pounds harvested for Chignik exclude jig harvest in 2006 and 2008-10 due to confidentiality; jig vessel numbers and jig landing data are also excluded for these years.

^c Price per pound calculated from whole fish pounds sold, excluding bait and meal.

^d Fishery value based on pounds of sold product (not pounds harvested).

Table 9.–Kodiak Area state-waters Pacific cod season openings by gear type, 1997–2013.

	Pot Gear	Jig Gear
1997	<i>Fishery Dates:</i> April 4 - May 4 September 1 - September 30 October 28 - December 31 <i>Management Actions:</i> September 1 - reopened to pot gear October 31 allocation rollover - gear limits, exclusive registration area lifted.	
1998	<i>Fishery Dates:</i> March 17 - April 27 September 1 - December 31 <i>Management Actions:</i> September 1 - reopened to pot gear October 31 vessel size limit - gear limits, exclusive registration area lifted.	
1999	<i>Fishery Dates:</i> March 21 - April 29 October 5 - December 31 <i>Management Actions:</i> October 6 - reopen to pot gear. (following CGOA opening) October 31 - gear limits lifted, exclusive registration area lifted.	
2000	<i>Fishery Dates:</i> March 11 - December 31 <i>Management Actions:</i> October 31 - limits on pots, jigs, and vessel size removed, exclusive registration area lifted.	
2001	<i>Fishery Dates:</i> March 11 - December 31 <i>Management Actions:</i> September 1 - reopen to pot gear. October 31 - limits on pots, jigs, and vessel size removed, exclusive registration area lifted.	
2002	<i>Fishery Dates:</i> March 16 - May 4 September 1 - December 31 <i>Management Actions:</i> September 1 - reopen to pot gear. October 31 - limits on pots, jigs, and vessel size removed, exclusive registration area lifted.	
2003	<i>Fishery Dates:</i> February 16 - March 2 <i>Management Actions:</i> Fishery closed when GHL allocations were attained.	
2004	<i>Fishery Dates:</i> February 7 - February 22 <i>Management Actions:</i> Fishery closed when GHL allocations were attained.	

-continued-

Table 9.–Page 2 of 2.

	Pot Gear	Jig Gear
2005	<i>Fishery Dates:</i> February 2 - February 13 <i>Management Actions:</i> Fishery closed when GHL allocations were attained.	February 2 - April 21
2006	<i>Fishery Dates:</i> March 7 - March 29 <i>Management Actions:</i> Pot gear closed when GHL was attained. Jig season closed on 9/1 for parallel season (B-season).	March 7 - September 1
2007	<i>Fishery Dates:</i> March 6 - April 8 <i>Management Actions:</i> Pot gear closed when GHL was attained. Jig season closed on 9/1 for parallel season (B-season).	March 6 - September 1
2008	<i>Fishery Dates:</i> February 27 - March 26 October 5 - November 22 <i>Management Actions:</i> Pot gear closed when GHL was attained. Jig season closed on 9/1 for parallel season (B-season). October 5 - reopen to pot and jig gear (following federal CGOA closure).	February 27 - September 1 October 5 - November 22
2009	<i>Fishery Dates:</i> February 3 - February 18 <i>Management Actions:</i> Pot gear closed when GHL was attained. Jig season closed on 9/1 for parallel season (B-season). October 3 - reopen to jig gear (following federal CGOA closure).	February 3 - September 1 October 3 - December 31
2010	<i>Fishery Dates:</i> February 7 - February 23 <i>Management Actions:</i> Pot gear closed when GHL was attained. Jig season closed when GHL was attained.	February 7 - June 5
2011	<i>Fishery Dates:</i> February 5 - February 18 <i>Management Actions:</i> Pot gear closed when GHL was attained. Jig season closed when GHL was attained.	February 5 - April 14
2012	<i>Fishery Dates:</i> February 17 - March 1 <i>Management Actions:</i> Pot gear closed when GHL was attained. Jig season closed when GHL was attained. October 12 - reopen to jig gear following closure of CGOA B season.	March 8 - May 23 October 12 - December 31
2013	<i>Fishery Dates:</i> February 17 - April 2 <i>Management Actions:</i> Pot gear closed when GHL was attained. Jig season closed on December 31. October 29 - Exclusive registration for Kodiak jig lifted.	March 15 - December 31

Note: GHL = guideline harvest level, CGOA = Central Gulf of Alaska.

Table 10.—Kodiak Area state-waters Pacific cod harvest and effort by gear type, 1997–2013.

Year	Gear	GHL ^a	Vessels	Landings	Pounds	Price Per Pound ^b
1997	Jig	4.25	73	482	1,978,772	\$0.23
	Pot	4.25	40	232	5,580,372	\$0.22
1998	Jig	4.05	91	661	2,112,817	\$0.23
	Pot	4.05	49	310	6,070,140	\$0.22
1999 ^c	Jig	5.85	118	793	2,294,837	\$0.38
	Pot	5.85	79	462	8,400,138	\$0.32
2000	Jig	6.00	143	1,226	2,814,481	\$0.40
	Pot	6.00	69	481	5,748,334	\$0.39
2001	Jig	5.30	69	433	1,252,692	\$0.36
	Pot	5.30	34	236	3,591,049	\$0.33
2002	Jig	4.35	51	340	1,389,838	\$0.28
	Pot	4.35	33	212	7,436,013	\$0.29
2003	Jig	4.00	102	688	3,195,605	\$0.35
	Pot	4.00	42	149	4,959,262	\$0.32
2004	Jig	4.95	124	961	4,210,284	\$0.34
	Pot	4.95	47	161	5,823,605	\$0.29
2005	Jig	4.56	122	849	4,570,327	\$0.33
	Pot	4.56	51	162	3,977,835	\$0.30
2006	Jig	5.21	79	477	1,446,881	\$0.43
	Pot	5.21	41	169	4,883,637	\$0.41
2007	Jig	5.21	63	457	1,249,753	\$0.52
	Pot	5.21	33	182	5,157,212	\$0.50
2008	Jig	5.22	76	647	2,042,082 ^d	\$0.61
	Pot	5.22	37	341	8,506,792 ^d	\$0.59
2009	Jig	4.35	94	833	4,450,217	\$0.32
	Pot	4.35	38	138	4,141,054	\$0.32
2010	Jig	6.75	81	707	6,504,733	\$0.30
	Pot	6.75	36	173	7,061,573	\$0.25
2011	Jig	7.41	132	975	7,135,212	\$0.35
	Pot	7.41	46	190	8,132,657	\$0.35
2012	Jig	7.85	145	1,159	7,936,707	\$0.38
	Pot	7.85	46	195	7,454,312	\$0.38
2013	Jig	6.79	55	199	587,942	\$0.26
	Pot	6.79	34	242	6,689,382	\$0.26

Note: Weights are reported in whole fish pounds; discards at sea excluded.

^a GHL = guideline harvest level (millions of pounds).

^b Price per pound calculated from whole fish pounds sold excluding bait and meal.

^c Beginning in 1999, vessels > 58' using pot gear were capped at 25% of the total GHL.

^d Pot harvest prior to the allocation rollover (September 1) was 5.42 million pounds. Jig harvest prior to the allocation rollover was 1.98 million pounds.

Table 11.—Pacific cod harvest and effort by statistical area from the Kodiak Area state-waters season, 2013.

Statistical Area	Pounds	Vessels	Landings ^a
525701	90,668	8	18
525703	547,968	5	24
525731	202,705	15	49
525733	441,410	25	50
525805	25,176	9	14
525806	87,095	3	8
535631	46,835	3	4
535634	263,922	6	16
535732	1,192,169	26	90
535734	76,890	7	19
535803	495,027	16	28
545632	218,518	8	28
545703	637,987	3	19
545734	524,207	10	28
Other ^b	2,426,747	18	65
Total	7,277,324	88	441

Note: Weights reported in whole fish pounds; discards at sea excluded.

^a Landings may involve multiple statistical areas.

^b A total of 13 statistical areas combined due to confidentiality.

Table 12.—Chignik Area state-waters Pacific cod season openings by gear type, 1997–2013.

	Pot Gear	Jig Gear
1997	<i>Fishery Dates:</i> April 15 - June 15 August 1 - September 30 October 28 - December 31 <i>Management Actions:</i> October 31 allocation rollover - vessel size limit, gear limits, exclusive registration area lifted.	April 15 - June 15 August 1 - September 30 October 28 - December 31
1998	<i>Fishery Dates:</i> April 1 - April 26 <i>Management Actions:</i> May 20 reopened to jig gear. October 31 allocation rollover - gear limits lifted.	April 1 - April 26 May 20 - December 31
1999	<i>Fishery Dates:</i> April 15 - September 1 October 5 - December 31 <i>Management Actions:</i> October 31 allocation rollover - limits on number of pots, jigs, and vessel size removed.	April 15 - September 1 October 5 - December 31
2000	<i>Fishery Dates:</i> April 15 - December 31 <i>Management Actions:</i> October 31 - limits on number of pots, jigs, and vessel size removed.	April 15 - December 31
2001	<i>Fishery Dates:</i> March 11 - December 31 <i>Management Actions:</i> October 31 - limits on number of pots, jigs, and vessel size removed.	March 11 - December 31
2002	<i>Fishery Dates:</i> March 1 - December 31 <i>Management Actions:</i> October 31 - limits on number of pots, jigs, and vessel size removed.	March 1 - December 31
2003	<i>Fishery Dates:</i> March 1 - April 11 <i>Management Actions:</i> Fishery closed when GHL allocations were attained.	March 1 - June 4
2004	<i>Fishery Dates:</i> March 1 - May 13 <i>Management Actions:</i> August 15 jig GHL rollover - jig quota harvestable by either jig or pot gear. October 31 - limits on number of pots, jigs, and vessel size removed.	March 1 - December 31
2005	<i>Fishery Dates:</i> March 1 - May 10 <i>Management Actions:</i> August 15 jig GHL rollover - jig quota harvestable by either jig or pot gear October 31 - limits on number of pots, jigs, and vessel size removed.	March 1 - December 31

-continued-

Table 12.–Page 2 of 3.

	Pot Gear	Jig Gear
2006	<i>Fishery Dates:</i> March 1 - September 1	
	March 1 - September 1	
	<i>Management Actions:</i> August 15 jig GHL rollover - jig quota harvestable by either jig or pot gear. September 1 - state-waters season (jig and pot) closed and parallel season opened.	
2007	<i>Fishery Dates:</i> March 1 - September 1	
	March 1 - September 1	
	<i>Management Actions:</i> August 15 jig GHL rollover - jig quota harvestable by either jig or pot gear. September 1 - state-waters season (jig and pot) closed and parallel season opened.	
2008	<i>Fishery Dates:</i> March 1 - April 17	
	March 1 - September 1	
	October 5 - December 31	
	October 5 - December 31	
	<i>Management Actions:</i> August 15 jig GHL rollover - jig quota harvestable by either jig or pot gear. September 1 - state-waters season (jig and pot) closed and parallel season opened. October 5 - reopen to pot and jig gear after federal CGOA closure. November 4 - Vessel size limits and gear limits removed.	
2009	<i>Fishery Dates:</i> March 1 - April 8	
	March 1 - September 1	
	October 3 - December 31	
	October 3 - December 31	
	<i>Management Actions:</i> August 15 jig GHL rollover - jig quota harvestable by either jig or pot gear. September 1 - state-waters season (jig and pot) closed and parallel season opened. October 3 - reopen to pot and jig gear after federal CGOA closure.	
2010	<i>Fishery Dates:</i> March 1 - April 6	
	March 1 - September 1	
	September 13 - December 31	
	September 13 - December 31	
	<i>Management Actions:</i> August 15 - jig GHL rollover; jig quota harvestable by either jig or pot gear. September 1 - state-waters season (jig and pot) closed and parallel season opened. September 13 - reopen to pot and jig gear after federal CGOA closure.	
2011	<i>Fishery Dates:</i> March 1 - March 17	
	March 1 - September 1	
	October 9 - December 31	
	October 9 - December 31	
	<i>Management Actions:</i> August 15 - jig GHL rollover; jig quota harvestable by either jig or pot gear. September 1 - state-waters season (jig and pot) closed and parallel season opened. October 9 - reopen to pot and jig gear after federal CGOA closure.	
2012	<i>Fishery Dates:</i> March 7 - March 28	
	March 15 - June 10	
	October 12 - December 31	
	June 29 - December 31	
	<i>Management Actions:</i> Pot gear season closed when GHL attained. June 29 - reopen to jig gear after federal CGOA jig B season closure. October 12 - reopen to pot and jig gear after CGOA pot B season closure.	

-continued-

Table 12.–Page 3 of 3.

	Pot Gear	Jig Gear
2013	<i>Fishery Dates:</i>	
	March 7 - March 29	March 15 - December 31
	<i>Management Actions:</i>	
	Pot gear season closed when GHL attained.	

Note: GHL = guideline harvest level, CGOA = Central Gulf of Alaska.

Table 13.—Chignik Area state-waters Pacific cod harvest and effort by gear type, 1997–2013.

Year	Gear	GHL ^a	Vessels	Landings	Pounds	Price Per Pound ^b
1997	Jig	2.95	4	14	35,002	\$0.18
	Pot	2.95	10	60	1,098,970	\$0.18
1998	Jig	2.85	11	59	167,283	\$0.18
	Pot	2.85	44	236	5,440,796	\$0.17
1999	Jig	4.10	11	56	218,408	\$0.32
	Pot	4.10	32	396	6,207,176	\$0.29
2000	Jig	1.01	5	12	38,453	\$0.35
	Pot	5.70	20	151	1,756,305	\$0.30
2001	Jig	0.90	13	55	277,411	\$0.27
	Pot	5.10	15	124	2,371,243	\$0.26
2002	Jig	0.74	14	60	324,227	\$0.20
	Pot	4.17	12	139	3,903,320	\$0.20
2003	Jig	0.68	16	106	433,067	\$0.28
	Pot	3.83	15	151	4,034,504	\$0.26
2004	Jig	1.10	14	53	141,697	\$0.24
	Pot	5.80	17	244	5,608,763	\$0.23
2005	Jig	0.63	8	42	136,872	\$0.24
	Pot	5.75	15	206	5,650,595	\$0.25
2006	Jig	0.73	1	2	Confidential	Confidential
	Pot	6.57	12	202	3,439,521	\$0.34
2007	Jig	0.73	0	0	0	\$0.00
	Pot	6.57	16	241	5,700,861	\$0.45
2008	Jig	0.73	2	3	Confidential	Confidential
	Pot	6.58	23	262	6,838,934 ^c	\$0.56
2009	Jig	0.61	1	1	Confidential	Confidential
	Pot	5.47	11	122	5,679,678	\$0.24
2010	Jig	0.95	1	20	Confidential	Confidential
	Pot	8.51	16	160	9,153,719 ^d	\$0.24
2011	Jig	1.04	10	45	224,400	\$0.32
	Pot	9.34	23	199	10,122,456	\$0.32
2012	Jig	1.1	6	15	266,638	\$0.35
	Pot	9.88	20	189	10,229,969	\$0.35
2013	Jig	0.95	0	0	0	\$0.00
	Pot	8.60	19	191	8,712,190	\$0.25

Note: Weights in whole fish pounds; discards at sea excluded. Data are confidential when fewer than 3 vessels participated.

^a GHL = guideline harvest level (millions of pounds).

^b Price per pound calculated from whole fish pounds sold excluding bait and meal.

^c Pot harvest prior to the allocation rollover (August 15) was 6.69 million pounds.

^d Pot harvest prior to the allocation rollover (August 15) was 8.49 million pounds.

Table 14.—Pacific cod harvest and effort by statistical area from the Chignik Area state-waters season, 2013.

Statistical Area	Pounds	Vessels	Landings ^a
565602	2,338,094	4	27
565633	1,801,190	5	53
565703	278,923	3	7
585531	2,692,053	4	40
Other ^b	1,601,930	14	64
Total	8,712,190	19	191

Note: Weights in whole fish pounds. Discards at sea excluded.

^a Some landings involve multiple statistical areas.

^b Total of 8 statistical area combined due to confidentiality.

Table 15.—South Alaska Peninsula Area state-waters Pacific cod season openings by gear type, 1997–2013.

	Pot Gear	Jig Gear
1997	<i>Fishery Dates:</i> April 4 - December 22 <i>Management Actions:</i> October 31 allocation rollover - vessel size limit, gear limits, exclusive registration rescinded.	April 4 - December 22
1998	<i>Fishery Dates:</i> March 10 - April 16 <i>Management Actions:</i> October 31 allocation rollover - No action; federal WGOA reopened October 9 - December 31.	March 10 - October 9
1999	<i>Fishery Dates:</i> March 15 - April 11 October 31- December 31 <i>Management Actions:</i> October 31 allocation rollover - Reopened to pot gear. November 10 - Gear limits rescinded.	March 15 - December 31
2000	<i>Fishery Dates:</i> March 11 - April 8 <i>Management Actions:</i> Fishery closed when GHL allocations were attained.	March 11 - September 19
2001	<i>Fishery Dates:</i> March 6 - April 13 <i>Management Actions:</i> Fishery closed when GHL allocations were attained.	March 6 - June 12
2002	<i>Fishery Dates:</i> March 5 - March 24 <i>Management Actions:</i> Fishery closed when GHL allocations were attained.	March 5 - April 26
2003	<i>Fishery Dates:</i> February 24 - March 11 <i>Management Actions:</i> Fishery closed when GHL allocations were attained.	February 24 - April 22
2004	<i>Fishery Dates:</i> March 2 - March 24 <i>Management Actions:</i> Fishery closed when GHL allocations were attained.	March 2 - April 14
2005	<i>Fishery Dates:</i> March 3 - March 24 <i>Management Actions:</i> Pot fishery closed when GHL allocation was attained. Jig fishery closed August 31, parallel portion of WGOA reopened September 1 - December 31.	March 3 - August 31
2006	<i>Fishery Dates:</i> March 9 - March 29 April 4 - April 8 <i>Management Actions:</i> Pot fishery closed when GHL allocation was attained. Jig fishery closed August 31, parallel portion of WGOA reopened September 1 - December 31.	March 9 - September 1

-continued-

Table 15.–Page 2 of 2.

	Pot Gear	Jig Gear
2007	<i>Fishery Dates:</i> March 15 - April 17 <i>Management Actions:</i> Pot fishery closed when GHL allocation was attained. Jig fishery closed August 31, parallel portion of WGOA reopened September 1 - December 31.	March 15 - September 1
2008	<i>Fishery Dates:</i> March 7 - April 1 <i>Management Actions:</i> Pot fishery closed when GHL allocation was attained. Jig fishery closed August 31, parallel portion of WGOA reopened September 1 - December 31.	March 7 - September 1
2009	<i>Fishery Dates:</i> March 4 - April 4 <i>Management Actions:</i> Pot fishery closed when GHL allocation was attained. Jig fishery closed August 31, parallel portion of WGOA reopened September 1 - December 31.	March 4 - September 1
2010	<i>Fishery Dates:</i> March 5 - March 23 <i>Management Actions:</i> Pot fishery closed when GHL allocation was attained. Jig fishery closed when GHL was attained.	March 5 - May 27
2011	<i>Fishery Dates:</i> February 25 - March 11 <i>Management Actions:</i> Pot fishery closed when GHL allocation was attained. Jig fishery closed when GHL was attained.	February 25 - April 26
2012	<i>Fishery Dates:</i> March 7 - March 22 <i>Management Actions:</i> Pot fishery closed when GHL allocation was attained. Jig season opened March 21 due to weather delay March 19 and 20.	March 21 - June 10
2013	<i>Fishery Dates:</i> March 9 - March 22 <i>Management Actions:</i> Pot fishery closed when GHL allocation was attained. Pot season opened March 9 due to weather delay on March 7 and 8.	March 15 - July 16

Note: GHL = guideline harvest level, WGOA = Western Gulf of Alaska.

Table 16.—South Alaska Peninsula Area state-waters Pacific cod harvest and effort by gear type, 1997–2013.

Year	Gear	GHL ^a	Vessels	Landings	Pounds	Price Per Pound ^b
1997	Jig	4.70	45	178	349,468	\$0.17
	Pot	4.70	51	469	9,097,805	\$0.10
1998	Jig	1.35	28	124	437,708	\$0.16
	Pot	7.65	51	309	8,192,804	\$0.17
1999	Jig	1.95	27	166	706,952	\$0.29
	Pot	11.05	53	388	11,115,028	\$0.26
2000	Jig	2.28	28	145	757,953	\$0.28
	Pot	12.90	65	505	14,286,151	\$0.30
2001	Jig	2.01	69	417	3,402,427	\$0.24
	Pot	11.39	55	311	10,421,593	\$0.25
2002	Jig	1.86	66	322	2,046,686	\$0.24
	Pot	10.50	50	276	10,669,572	\$0.21
2003	Jig	1.80	65	413	3,633,007	\$0.27
	Pot	9.69	41	191	7,927,656	\$0.27
2004	Jig	1.90	51	317	1,671,461	\$0.24
	Pot	10.60	43	277	10,770,980	\$0.23
2005	Jig	1.73	39	261	1,229,832	\$0.25
	Pot	9.80	39	267	10,206,340	\$0.25
2006	Jig	2.22	12	36	99,552	\$0.36
	Pot	12.58	43	350	11,640,183	\$0.36
2007	Jig	2.22	14	59	254,178	\$0.47
	Pot	12.58	46	406	12,423,973	\$0.47
2008	Jig	2.14	52	310	1,401,011	\$0.57
	Pot	12.15	48	390	11,901,039	\$0.57
2009	Jig	1.78	26	185	1,093,382	\$0.23
	Pot	10.11	47	329	10,500,742	\$0.26
2010	Jig	2.29	34	294	2,315,081	\$0.25
	Pot	12.96	38	240	12,973,186	\$0.25
2011	Jig	2.51	42	271	2,443,043	\$0.28
	Pot	14.23	49	280	14,363,262	\$0.29
2012	Jig	2.32	48	345	1,989,884	\$0.34
	Pot	13.13	53	299	13,366,884	\$0.34
2013	Jig	2.34	38	281	2,198,511	\$0.27
	Pot	13.25	37	248	13,384,834	\$0.27

Note: Weights in whole fish pounds; discards at sea excluded.

^a GHL = guideline harvest level (millions of pounds).

^b Price per pound calculated from whole fish pounds sold excluding bait and meal.

Table 17.—Pacific cod harvest and effort by statistical area from the South Alaska Peninsula Area state-waters season, 2013.

Statistical Area	Pounds	Vessels	Landings ^a
595502	899,669	7	17
595503	465,447	4	9
595533	178,743	5	13
605432	432,218	7	13
605501	180,588	12	28
605502	3,400,428	28	86
605504	1,817,598	30	126
605506	156,042	10	20
605507	336,844	13	35
605531	28,983	3	4
615508	223,742	7	15
625401	2,265,605	5	32
625431	634,761	6	23
635432	298,782	6	11
635434	1,550,719	8	39
635436	243,594	3	5
665302	1,957,379	4	7
Other ^b	512,204	19	36
	15,583,345	74	529

Note: Weights reported in whole fish pounds; discards at sea excluded.

^a Some landings include multiple statistical areas.

^b Total of 11 statistical area combined due to confidentiality.

Table 18.—Kodiak Area black rockfish jig season harvest, effort, and price per pound, 2013.

Year ^a	Vessels	Landings	Directed GH ^L ^b	Pounds	Price Per Pound ^c
1990	2	8	-	Confidential	Confidential
1991	55	317	-	782,133	\$0.25
1992	34	167	-	476,623	\$0.24
1993	14	58	-	105,244	\$0.24
1994	23	126	-	116,724	\$0.37
1995	33	183	-	311,455	\$0.44
1996	43	167	-	301,798	\$0.46
1997	51	297	-	221,167	\$0.38
1998	64	348	190,000	196,548	\$0.33
1999	70	300	185,000	128,008	\$0.42
2000	72	260	185,000	245,891	\$0.44
2001	36	168	185,000	213,629	\$0.50
2002	25	123	185,000	196,166	\$0.43
2003	33	90	185,000	84,237	\$0.36
2004	37	124	185,000	122,180	\$0.39
2005	23	85	175,000	116,726	\$0.40
2006	25	97	175,000	123,443	\$0.42
2007	21	96	175,000	135,386	\$0.41
2008	17	91	175,000	132,325	\$0.53
2009	18	90	175,000	122,249	\$0.41
2010	12	74	175,000	103,630	\$0.39
2011	21	67	175,000	124,900	\$0.39
2012	19	53	135,000	80,940	\$0.41
2013	20	62	135,000	141,226	\$0.45

Note: Weights reported in whole fish pounds; discards at sea excluded.

^a Prior to 1998, black rockfish were federally managed.

^b GH^L = guideline harvest level.

^c Price per pound based on whole fish pounds sold, excluding bait and meal.

Table 19.—Chignik Area black rockfish jig season harvest, effort, and price per pound, 1990–2013.

Year ^a	Vessels	Landings	Directed GHL ^b	Pounds	Price Per Pound ^c
1990	0	0	-	0	NA
1991	0	0	-	0	NA
1992	0	0	-	0	NA
1993	0	0	-	0	NA
1994	0	0	-	0	NA
1995	5	6	-	25,125	\$0.49
1996	11	25	-	201,825	\$0.36
1997	9	39	-	80,741	\$0.23
1998	10	30	100,000	87,712	\$0.28
1999	10	30	100,000	11,305	\$0.25
2000	7	14	100,000	95,572	\$0.43
2001	13	33	100,000	102,316	\$0.41
2002	7	15	100,000	81,015	\$0.41
2003	10	40	100,000	46,598	\$0.42
2004	6	26	100,000	99,122	\$0.27
2005	7	16	100,000	49,721	\$0.40
2006	2	4	100,000	Confidential	Confidential
2007	2	7	100,000	Confidential	Confidential
2008	1	4	100,000	Confidential	Confidential
2009	2	2	100,000	Confidential	Confidential
2010	1	5	100,000	Confidential	Confidential
2011	1	1	100,000	Confidential	Confidential
2012	1	1	100,000	Confidential	Confidential
2013	0	0	100,000	0	NA

Note: Weights reported in whole fish pounds; discards at sea excluded. NA = Not Applicable

^a Prior to 1998, black rockfish were federally managed.

^b GHL = guideline harvest level.

^c Price per pound based on whole fish pounds sold, excluding bait and meal.

Table 20.—South Alaska Peninsula Area Eastern District black rockfish jig season harvest, effort, and price per pound, 1990–2013.

Year ^a	Vessels	Landings	Directed GH ^L ^b	Pounds	Price Per Pound ^c
1990	0	0	-	0	0
1991	1	1	-	Confidential	Confidential
1992	0	0	-	0	0
1993	0	0	-	0	0
1994	0	0	-	0	0
1995	8	49	-	120,745	\$0.33
1996	19	78	-	150,188	\$0.25
1997	9	32	-	109,076	\$0.34
1998	6	18	100,000	84,145	\$0.29
1999	9	38	100,000	55,308	\$0.41
2000	20	73	100,000	94,797	\$0.35
2001	30	82	100,000	101,605	\$0.36
2002	9	30	100,000	102,114	\$0.29
2003	4	6	100,000	5,267	\$0.21
2004	15	24	100,000	8,925	\$0.26
2005	11	26	100,000	57,732	\$0.35
2006	3	8	75,000	7,015	\$0.37
2007	2	9	75,000	Confidential	Confidential
2008	0	0	75,000	0	NA
2009	3	3	75,000	705	\$0.25
2010	1	1	75,000	Confidential	Confidential
2011	1	2	75,000	Confidential	Confidential
2012	0	0	75,000	0	NA
2013	2	4	75,000	Confidential	Confidential

Note: Weights reported in whole fish pounds; discards at sea excluded. NA = Not Applicable

^a Prior to 1998, black rockfish were federally managed.

^b GH^L = guideline harvest level.

^c Price per pound based on whole fish pounds sold, excluding bait and meal.

Table 21.—Regulation and management development of the black rockfish fishery in the Kodiak, Chignik, and South Alaska Peninsula areas.

YEAR	REGULATION
Pre-1997	<ul style="list-style-type: none"> ● Black rockfish managed by NMFS
1997	<ul style="list-style-type: none"> ● NPFMC removes black rockfish from Pelagic Shelf Rockfish Group ● State-waters managed separately from federal waters: <ul style="list-style-type: none"> ○ Kodiak Area managed for 170,000 pounds ○ Chignik Area managed for 100,000 pounds ○ South Alaska Peninsula Eastern District managed for 100,000 pounds
1998	<ul style="list-style-type: none"> ● State assumes management authority from NMFS for black rockfish in the Exclusive Economic Zone ● Kodiak and Chignik areas and South Alaska Peninsula Eastern District established as non-exclusive registration ● Kodiak Area divided into seven districts each with separate guideline harvest level (GHL)
1999	<ul style="list-style-type: none"> ● ADF&G reduces GHL for Northeast District of Kodiak Area from 25,000 pounds to 20,000 pounds
2003	<ul style="list-style-type: none"> ● Kodiak Area non-exclusive black rockfish area registration ● Kodiak Area trip limit of 5,000 pounds per 5 days ● Chignik Area designated superexclusive registration ● Chignik Area divided into 3 management districts; ADF&G establishes an inseason GHL cap of 45,000 pounds from any one district
2004	<ul style="list-style-type: none"> ● ADF&G reduces GHL for Westside District of Kodiak Area from 30,000 pounds to 20,000 pounds
2005	<ul style="list-style-type: none"> ● South Alaska Peninsula Eastern District divided into 3 management sections, ADF&G establishes an inseason GHL cap of 45,000 pounds from any one section ● 2,500 pound "incidental" trip limit implemented for vessels fishing during other directed jig groundfish fisheries in Kodiak Area ● Logbook made mandatory for Kodiak Area black rockfish
2006	<ul style="list-style-type: none"> ● ADF&G reduces GHL in the South Alaska Peninsula Eastern District to 75,000 pounds and section caps removed
2007	<ul style="list-style-type: none"> ● Incidental trip limit in Northeast, Afognak, and Southeast Districts reduced to 1,000 pounds
2011	<ul style="list-style-type: none"> ● Kodiak Area Rockfish Management Plan revised <ul style="list-style-type: none"> ○ Incidental trip limits repealed; replaced with bycatch percentages established by emergency order ○ Late season trip limit increased from 5,000 to 7,000 pounds ○ Reporting requirements and trip limits for catcher processors
2012	<ul style="list-style-type: none"> ● Southwest and Mainland districts of the Kodiak Area established as bycatch only, GHL eliminated

Note: NPFMC = North Pacific Fishery Management Council, NMFS = National Marine Fisheries Service.

Table 22.—Commercial jig harvest of black rockfish from Kodiak, Chignik, and South Alaska Peninsula areas by district, 2013.

Area/District	GHL	Harvest ^a	Directed Fishery Closure Date	Pounds	
				Directed ^b	Other ^c
Kodiak Area					
Afognak	35,000	32,086	May 1	31,843	243
Northeast	20,000	23,694	April 23	20,567	3,127
Eastside	30,000	37,788	April 30	35,912	1,876
Southeast	30,000	47,099	May 6	47,099	0
Southwest	Bycatch only	0	NA	0	0
Westside	20,000	560	December 31	501	59
Mainland	Bycatch only	0	NA	0	0
Total	135,000	141,227		135,921	5,305
Chignik Area					
Sutwik Island	45,000	0	December 31	0	0
Chignik Bay	45,000	0	December 31	0	0
Mitrofanina	45,000	0	December 31	0	0
Total	100,000	0		0	0
South Alaska Peninsula Area - Eastern District					
Total	75,000	Confidential	December 31	0	Confidential

Note: Weights in whole fish pounds; discards at sea excluded. GHL = Guideline harvest Level, NA = Not Applicable

^a Total pounds of black rockfish harvested by jig gear.

^b Total pounds of black rockfish harvested by jig gear in the directed black rockfish fishery.

^c Total pounds of black rockfish harvested by jig gear as bycatch.

Table 23.—Lingcod harvest from Kodiak, Chignik, and South Alaska Peninsula areas, 1988–2013.

Year	Jig	Longline	Pot	Trawl	Total
1988	59	43	0	136,191	136,294
1989	69	0	0	14,324	14,394
1990	1,418	158	402	8,839	10,816
1991	8,375	501	386	663	9,925
1992	5,569	4,261	72	10,897	20,799
1993	0	511	0	4,778	5,289
1994	4,820	803	0	229	5,852
1995	34,574	3,467	79	1,191	39,311
1996	43,403	7,878	0	10,929	62,209
1997	12,637	6,499	4,251	5,267	28,654
1998	5,756	1,771	0	3,514	11,041
1999	1,358	3,802	4,189	4,593	13,941
2000	3,400	6,734	2,676	2,127	14,938
2001	527	4,063	3,597	5,688	13,875
2002	29	6,131	2,749	5,380	14,290
2003	229	9,740	0	5,069	15,037
2004	2,990	6,865	205	16,731	26,791
2005	772	18,831	7,983	14,078	41,663
2006	289	16,028	20,127	12,670	49,114
2007	35	28,058	32,024	45,420	105,538
2008	1,518	31,637	21,278	466,826	521,259
2009	373	28,112	3,614	65,182	97,281
2010	812	31,204	1,935	33,594	67,545
2011	123	25,045	14,962	82,323	122,454
2012	297	18,815	69,613	69,683	158,408
2013	0	14,341	19,222	29,166	62,729

Note: Weights reported in whole fish pounds, discards at sea excluded.

Table 24.—Central and Western Gulf of Alaska walleye pollock fishery openings, 2009–2013.

NMFS Area	2009	2010	2011	2012	2013
Area 630	Jan 20 - Jan 22	Jan 20 - Jan 22	Jan 20 - Jan 21	Jan 20 - Jan 23	Jan 20 - Jan 22
	Feb 11 - Feb 11	Feb 11 - Feb 11	Feb 28 - Mar 1	Feb 16 - Feb 25	Feb 8 - Feb 22
	Mar 9 - Mar 11	Mar 9 - Mar 11	Mar 7 - Mar 12	Mar 10 - Mar 10	Mar 10 - Mar 10
	Aug 25 - Aug 26	Aug 25 - Aug 26	Aug 25 - Aug 27	Mar 21 - Mar 24	Mar 22 - Mar 26
	Sep 29 - Oct 1	Sep 29 - Oct 1	Sep 4 - Sep 9	Aug 25 - Oct 20	Aug 25 - Sep 16
			Oct 1 - Nov 1		Oct 1 - Oct 8
					Oct 22 - Nov 11
Area 620	Jan 20 - Mar 6	Jan 20 - Mar 6	Jan 20 - Feb 25	Jan 20 - Feb 27	Jan 20 - Feb 24
	Mar 10 - Mar 14	Mar 10 - Mar 14	Mar 10 - Mar 22	Mar 10 - Mar 17	Mar 10 - Mar 17
	Aug 25 - Aug 26	Aug 25 - Aug 26	Aug 25 - Sep 4	Aug 25 - Sep 18	Aug 25 - Sep 13
	Sep 29 - Oct 4	Sep 29 - Oct 4	Oct 1 - Nov 1	Oct 24 - Nov 1	Oct 1 - Oct 6
					Oct 22 - Nov 11
Area 610	Jan 20 - Jan 22	Jan 20 - Jan 22	Jan 20 - Jan 23	Jan 20 - Mar 10	Jan 20 - Mar 30
	Mar 1 - Mar 3	Mar 1 - Mar 3	Feb 27 - Mar 28	Mar 10 - Apr 1	Aug 25 - Nov 11
	Mar 10 - Mar 12	Mar 10 - Mar 12	Aug 25 - Sep 17	Aug 25 - Sep 10	
	Aug 25 - Aug 31	Aug 25 - Aug 31	Oct 10 - Nov 1	Oct 1 - Oct 12	
	Oct 1 - Oct 6	Oct 1 - Oct 6		Oct 19 - Oct 23	

Note: NMFS = National Marine Fisheries Service.

Table 25.—Walleye pollock harvest and effort in millions of pounds from the Central and Western Gulf of Alaska, 1995–2013.

NMFS Area	Year	Vessels	Landings	Pounds	State Waters	Discards
					Harvest (%) ^a	at sea
Central GOA	1995	108	810	74.02	12	1.7
	1996	84	904	50.35	28	3.0
	1997	107	1,528	121.28	31	1.6
	1998	119	1,702	206.64	34	0.2
	1999	101	1,293	148.12	27	0.4
	2000	60	1,108	106.09	4	0.5
	2001	74	1,160	86.88	21	0.3
	2002	72	838	70.90	43	0.2
	2003	61	730	71.86	23	0.2
	2004	57	772	86.64	37	0.4
	2005	53	820	102.90	23	0.3
	2006	48	988	96.69	29	0.2
	2007	42	894	72.65	26	0.4
	2008	47	990	71.48	32	1.4
	2009	43	821	53.71	35	1.1
	2010	50	1,028	101.31	23	1.0
	2011	56	1,060	121.74	10	1.3
	2012	70	1,262	154.03	18	1.0
	2013	66	1,385	182.78	14	1.6
10-Yr Average		53	1,002	104.39	25	0.9
NMFS Area	Year	Vessels	Landings	Pounds	State Waters	Discards
					Harvest (%) ^a	at sea
Western GOA	1995	92	351	65.69	34	1.3
	1996	56	319	52.06	60	1.5
	1997	84	333	62.47	32	1.1
	1998	84	362	65.70	58	0.2
	1999	80	432	52.82	53	0.5
	2000	49	419	47.33	79	0.2
	2001	51	548	67.53	74	0.1
	2002	45	316	38.14	49	0.5
	2003	41	262	37.04	54	0.3
	2004	32	350	50.86	61	0.2
	2005	36	502	67.85	49	0.2
	2006	38	499	53.78	62	0.3
	2007	38	413	38.15	53	0.1
	2008	29	340	32.75	34	0.0
	2009	35	309	30.68	68	0.4
	2010	38	561	57.05	58	0.1
	2011	35	502	44.98	53	0.3
	2012	46	697	60.16	73	0.5
	2013	40	402	16.81	57	1.0
10-Yr Average		37	458	45.31	57	0.3

Notes: Harvest reported in whole fish pounds; GOA = Gulf of Alaska; NMFS = National Marine Fisheries Service.

^a Percent of total walleye pollock harvested in state waters (0 to 3 nmi).

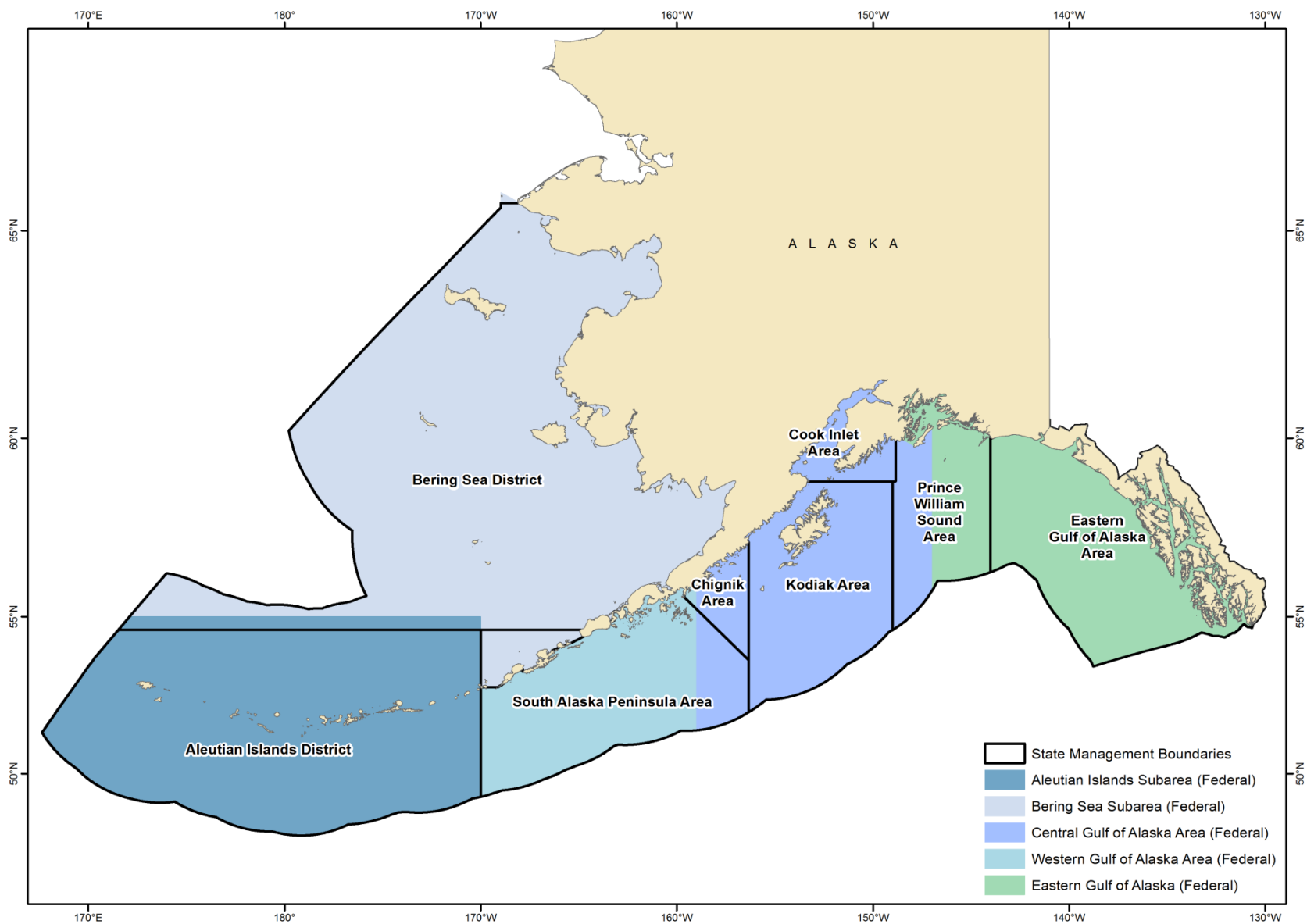


Figure 1.—Alaska Department of Fish and Game and National Marine Fisheries Service groundfish reporting areas.

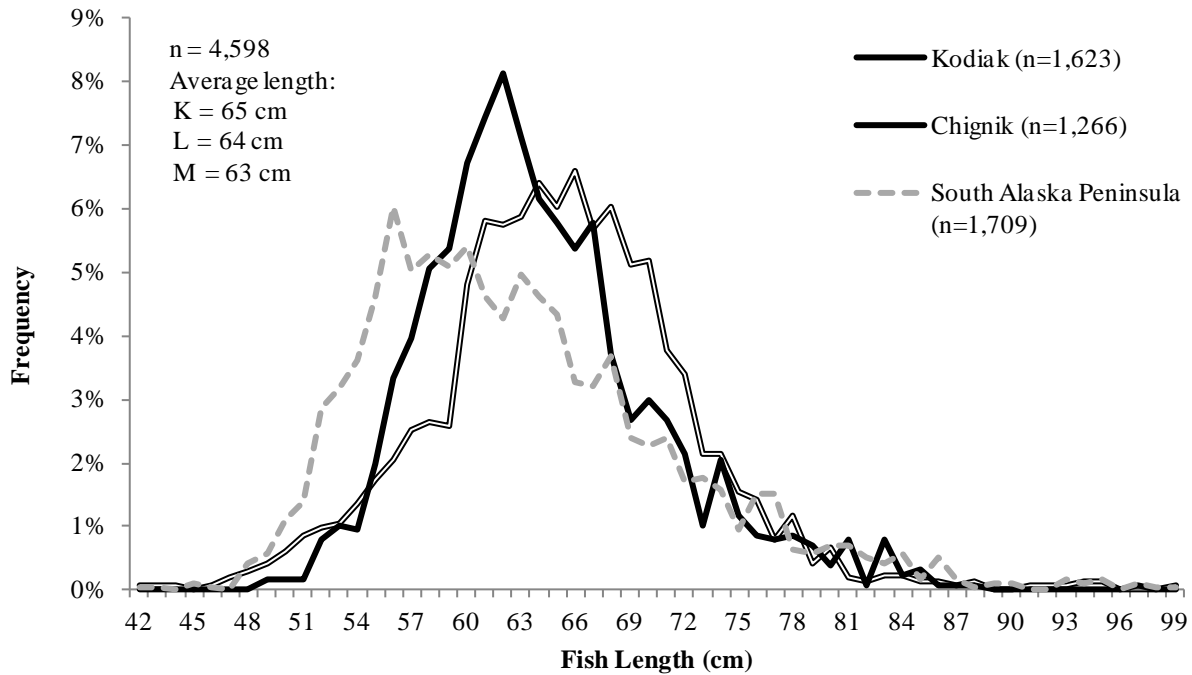


Figure 2.—Pacific cod length frequency by area from the 2013 state-waters fisheries in Kodiak (K), Chignik (L), and South Alaska Peninsula (M) areas.

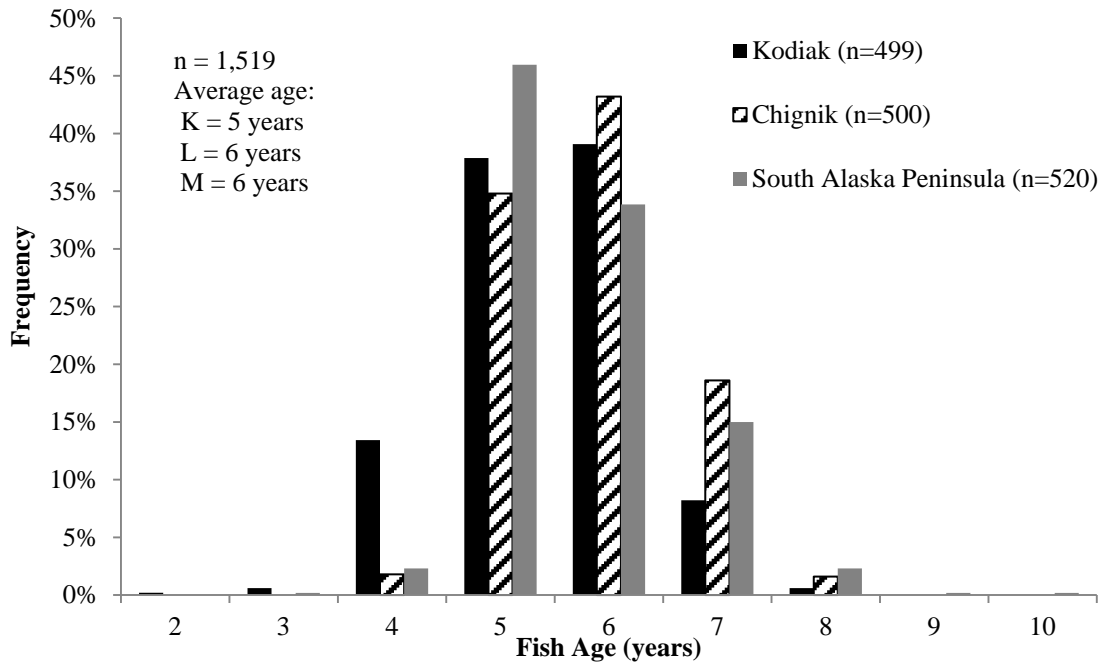


Figure 3.—Age composition of Pacific cod sampled from the 2013 state-waters fisheries in the Kodiak (K), Chignik (L), and South Alaska Peninsula (M) areas.

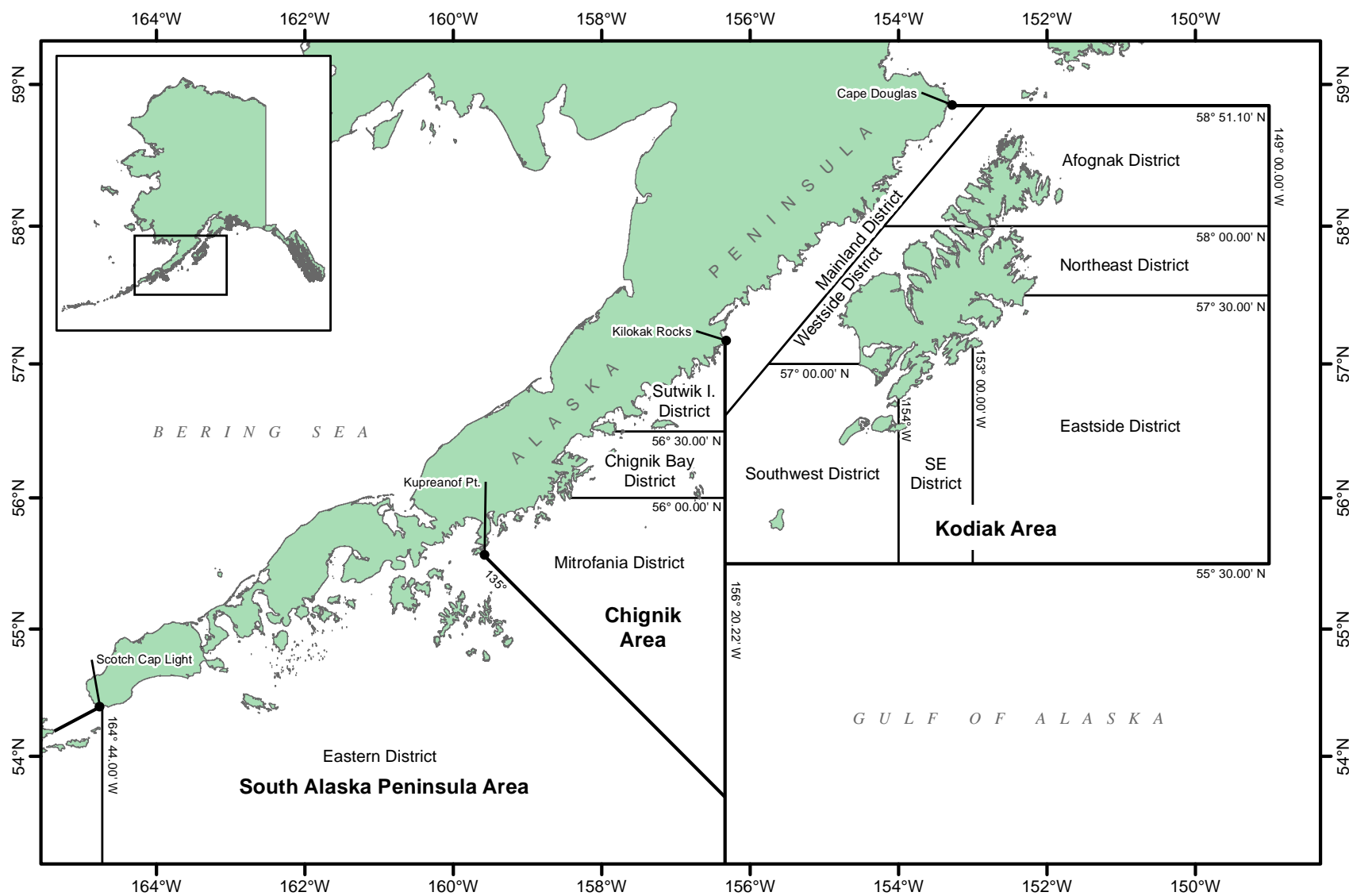


Figure 4.—Kodiak, Chignik, and South Alaska Peninsula black rockfish management areas and districts, 2013.

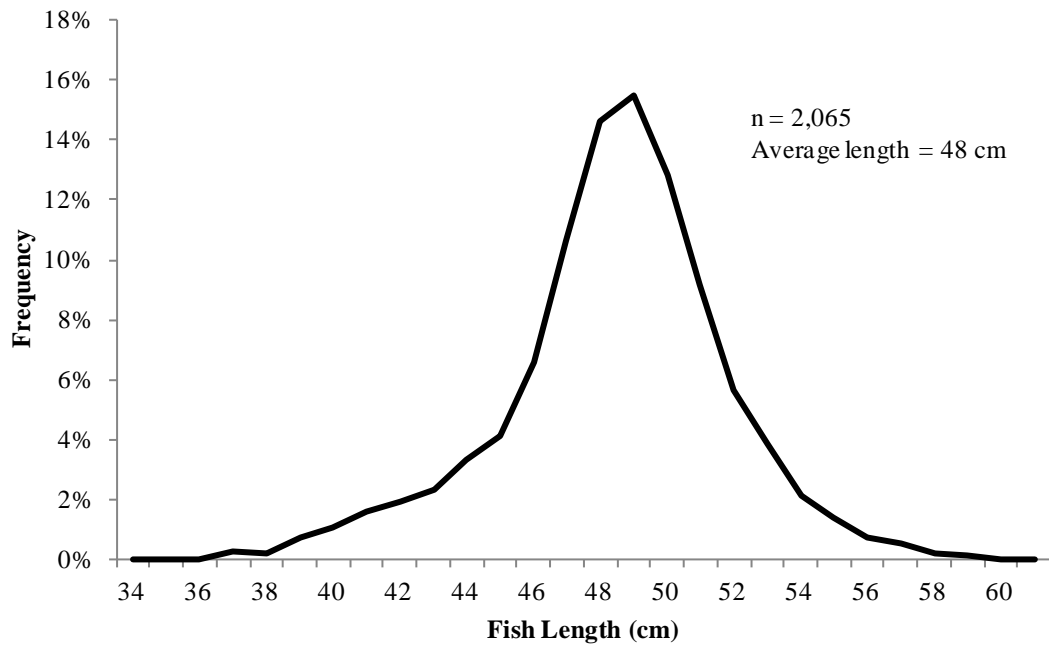


Figure 5.—Size composition of black rockfish sampled from the 2013 Kodiak Area fishery.

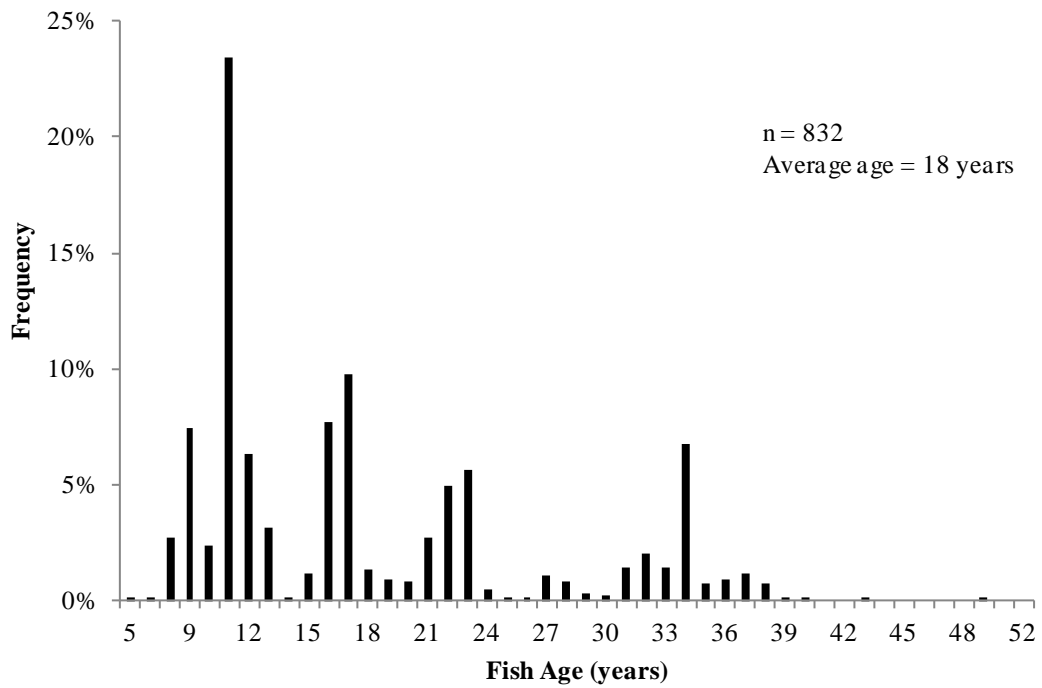


Figure 6.—Age composition of black rockfish sampled from the 2013 Kodiak Area fishery.

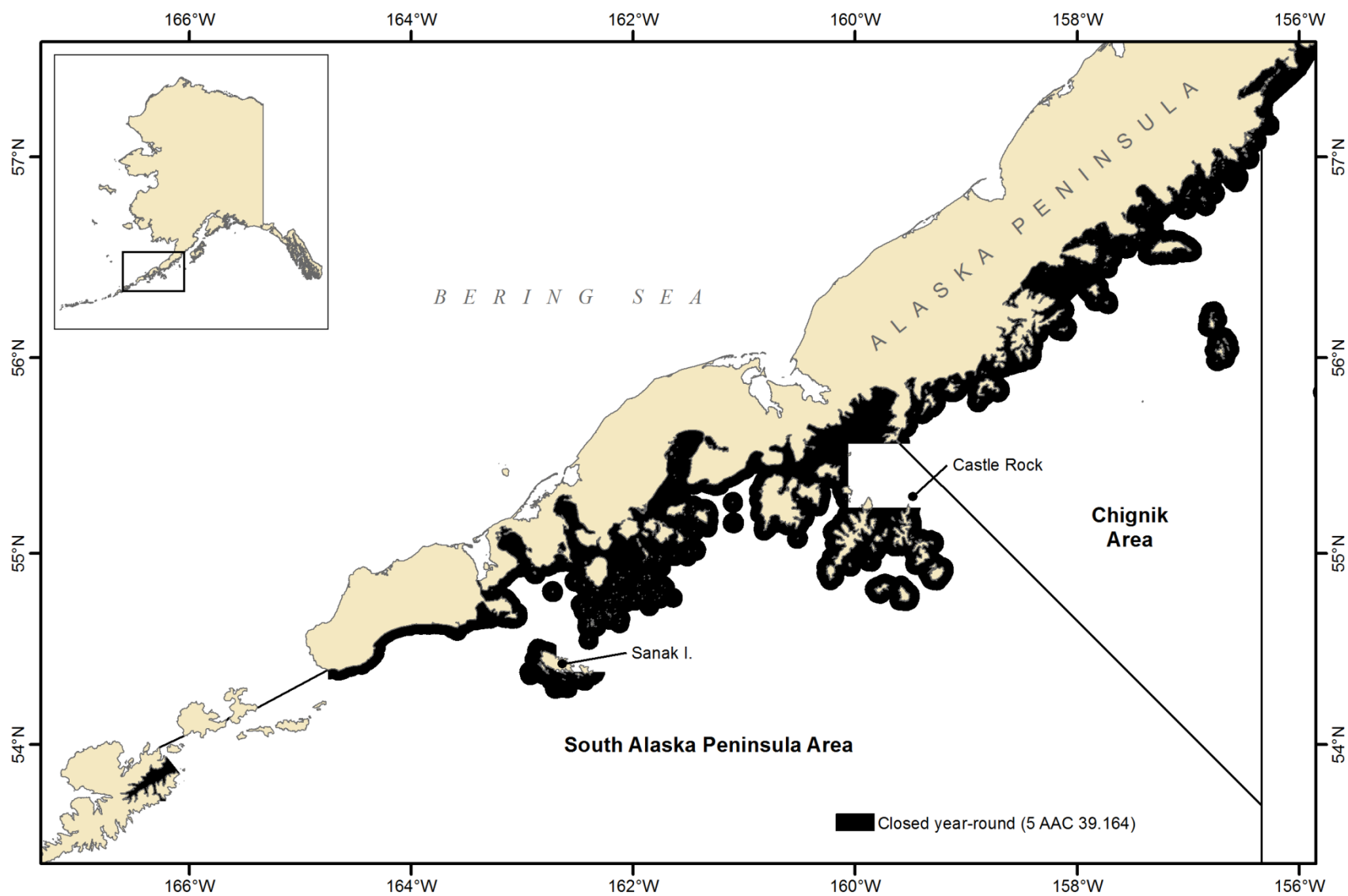


Figure 7.—Chignik and South Alaska Peninsula areas non-pelagic trawl gear closures, 2013.

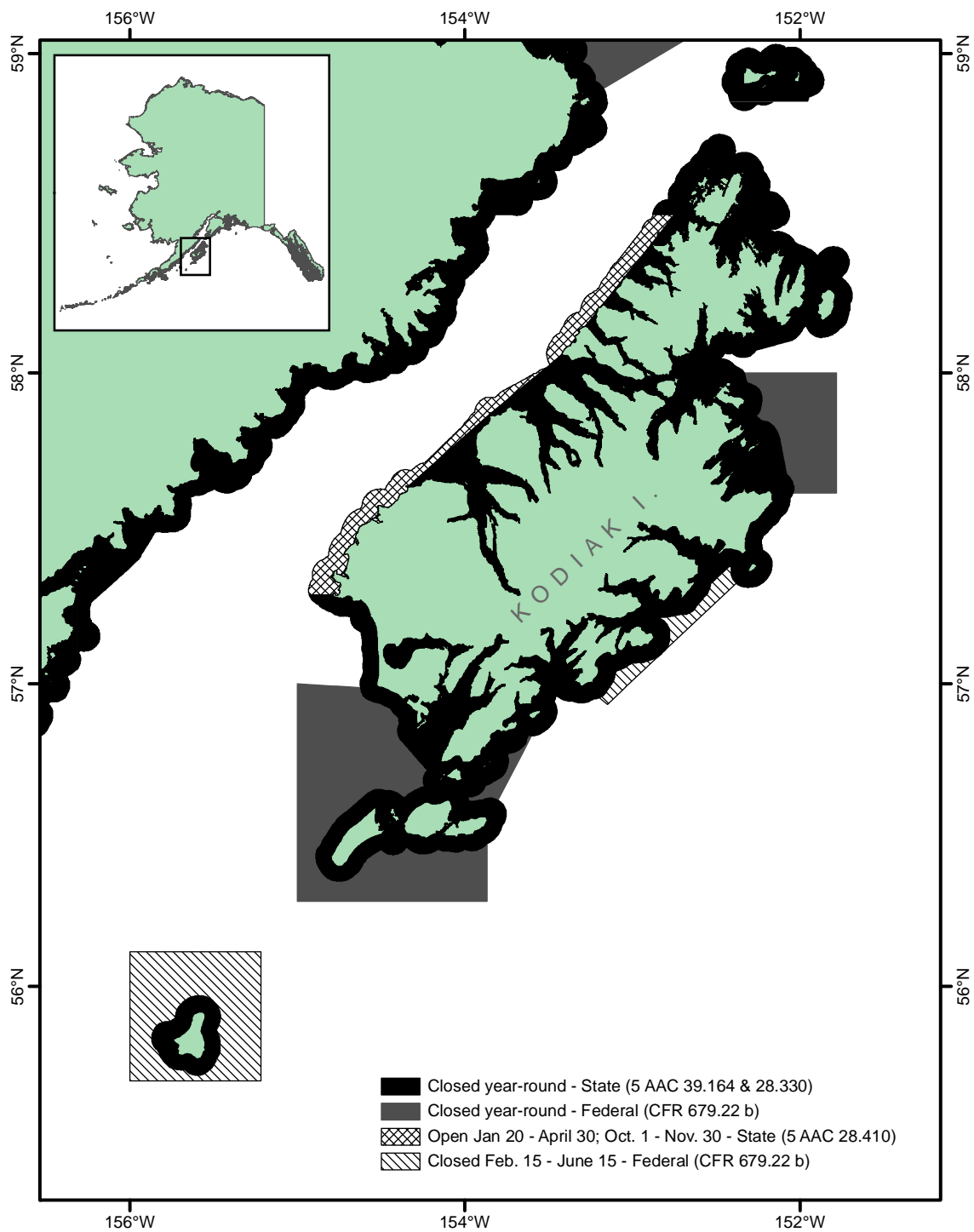


Figure 8.—Kodiak Area non-pelagic trawl gear closures, 2013.

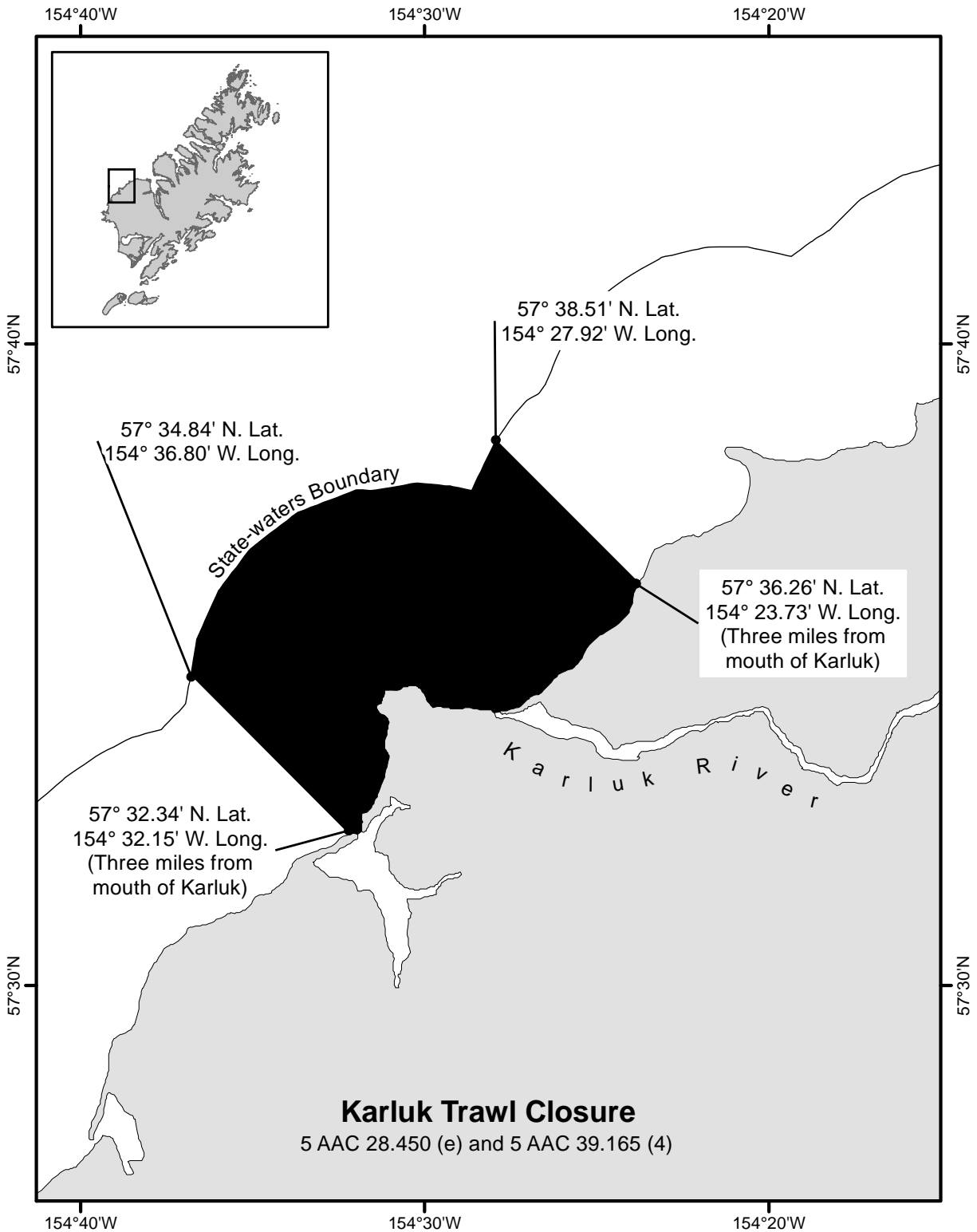


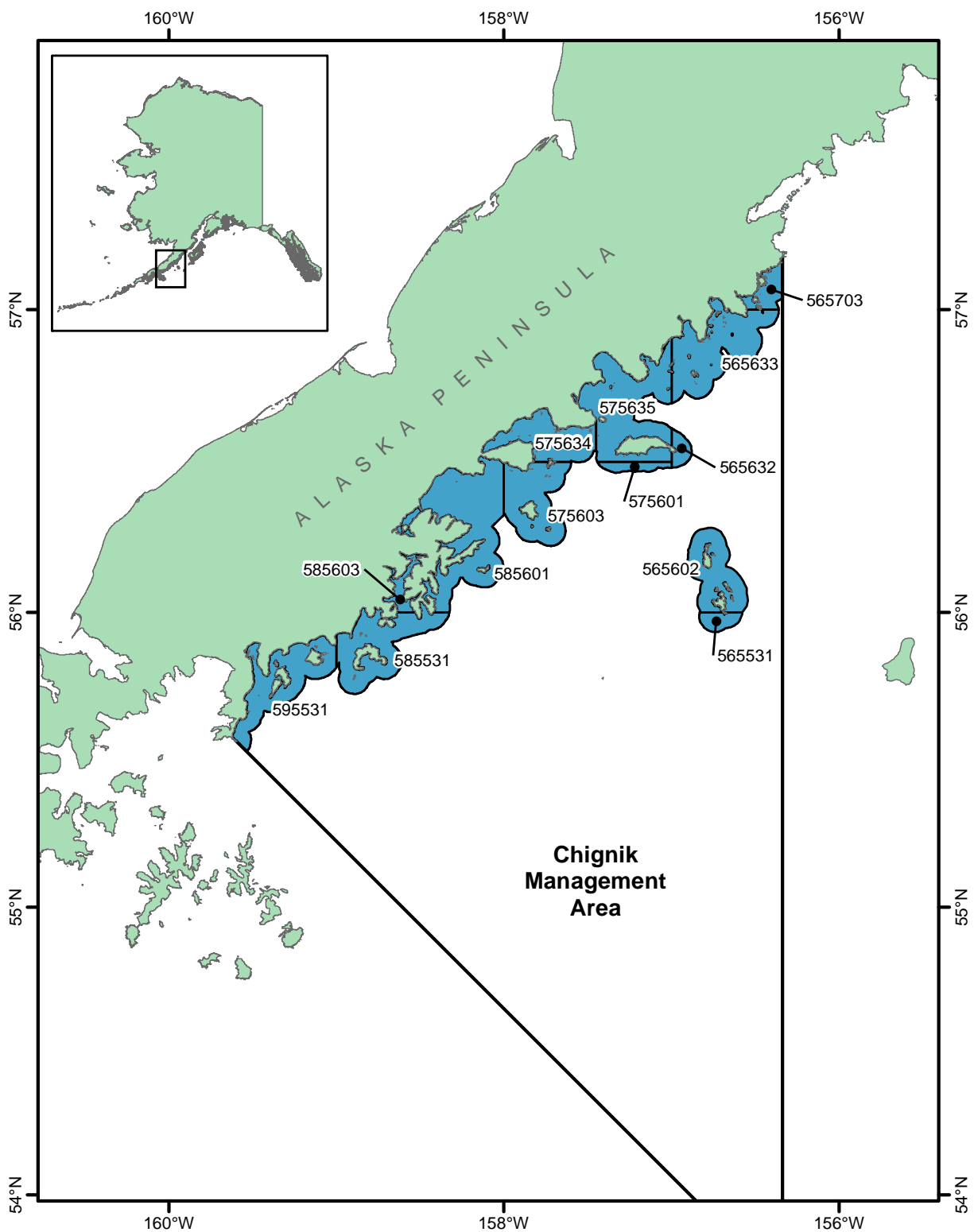
Figure 9.—Karluk trawl closure, 2013.

APPENDIX A. FREQUENTLY USED ACRONYMS AND KEY WORDS

Appendix A1.–Frequently used acronyms and key words.

Acronym	Definition
ABC	Acceptable Biological Catch, stock specification as set by NPFMC on an annual basis
BOF	Alaska Board of Fisheries
BSAI	Bering Sea-Aleutian Islands Area, state management area or federal management area
CGOA	Central Gulf of Alaska, federal management areas 620 and 630
EEZ	Exclusive Economic Zone, federal waters from 3 to 200 nautical miles offshore
EGOA	Eastern Gulf of Alaska, comprised of federal management areas 640 and 650
EO	Emergency order, management action taken by ADF&G to effect regulatory change
GHL	Guideline Harvest Level
GOA	Gulf of Alaska
LLP	Federal License Limitation Program
mt	Metric ton (equal to 2,204.62 pounds)
NMFS	National Marine Fisheries Service
NPFMC	North Pacific Fishery Management Council
Parallel fishery	Fishery occurring from 0 to 3 nautical miles opened by the state under federal rules while a federal fishery is ongoing from 3 to 200 nautical miles
SSL	Steller Sea Lion
State waters	Territorial sea from 0 to 3 nautical miles
State-waters fishery	Fishery occurring from 0 to 3 nautical miles open under Alaska Board of Fisheries regulations and managed exclusively by Alaska Department of Fish and Game
TAC	Total Allowable Catch, final federal harvest specification for directed fishing as recommended by NPFMC and set by NMFS
WGOA	Western Gulf of Alaska, federal management area 610

**APPENDIX B. KODIAK, CHIGNIK, AND SOUTH ALASKA
PENINSULA MANAGEMENT AREAS STATE-WATERS
STATISTICAL AREAS FOR GROUND FISH**



Appendix B2.—Chignik Management Area state-waters statistical areas for groundfish.

