

**Annual Management Report for Groundfish Fisheries
in the Kodiak, Chignik, and South Alaska Peninsula
Management Areas, 2011**

by

Trent Hartill,

Paul Converse,

and

Kim Phillips

REVISED:

February 22, 2013

Figure 2 cmended

December 2012

Alaska Department of Fish and Game

Divisions of Sport Fish and Commercial Fisheries



Symbols and Abbreviations

The following symbols and abbreviations, and others approved for the Système International d'Unités (SI), are used without definition in the following reports by the Divisions of Sport Fish and of Commercial Fisheries: Fishery Manuscripts, Fishery Data Series Reports, Fishery Management Reports, and Special Publications. All others, including deviations from definitions listed below, are noted in the text at first mention, as well as in the titles or footnotes of tables, and in figure or figure captions.

Weights and measures (metric)		General		Mathematics, statistics		
centimeter	cm	Alaska Administrative Code	AAC	all standard mathematical signs, symbols and abbreviations		
deciliter	dL	all commonly accepted abbreviations	e.g., Mr., Mrs., AM, PM, etc.	alternate hypothesis	H _A	
gram	g	all commonly accepted professional titles	e.g., Dr., Ph.D., R.N., etc.	base of natural logarithm	<i>e</i>	
hectare	ha			catch per unit effort	CPUE	
kilogram	kg			coefficient of variation	CV	
kilometer	km	at compass directions:	@	common test statistics	(F, t, χ^2 , etc.)	
liter	L			confidence interval	CI	
meter	m			correlation coefficient (multiple)	R	
milliliter	mL	east	E	correlation coefficient (simple)	r	
millimeter	mm	north	N	covariance	cov	
Weights and measures (English)		south	S	degree (angular)	°	
	cubic feet per second	ft³/s	west	degrees of freedom	df	
	foot	ft	copyright	expected value	<i>E</i>	
	gallon	gal	corporate suffixes:	greater than	>	
	inch	in	Company	greater than or equal to	≥	
	mile	mi	Corporation	harvest per unit effort	HPUE	
	nautical mile	nmi	Incorporated	less than	<	
	ounce	oz	Limited	less than or equal to	≤	
	pound	lb	District of Columbia	logarithm (natural)	ln	
	quart	qt	et alii (and others)	et al.	logarithm (base 10)	log
yard	yd	et cetera (and so forth)	etc.	logarithm (specify base)	log ₂ , etc.	
Time and temperature		exempli gratia (for example)	e.g.	minute (angular)	'	
	day	d	Federal Information Code	not significant	NS	
	degrees Celsius	°C	id est (that is)	null hypothesis	H ₀	
	degrees Fahrenheit	°F	latitude or longitude	percent	%	
	degrees kelvin	K	monetary symbols (U.S.)	probability	P	
	hour	h	months (tables and figures): first three letters	probability of a type I error (rejection of the null hypothesis when true)	α	
	minute	min	registered trademark	probability of a type II error (acceptance of the null hypothesis when false)	β	
	second	s	trademark	second (angular)	"	
	Physics and chemistry		United States (adjective)	U.S.	standard deviation	SD
		all atomic symbols		United States of America (noun)	standard error	SE
alternating current		AC	U.S.C.	variance		
ampere		A	U.S. state	population sample	Var var	
calorie		cal				
direct current		DC				
hertz		Hz				
horsepower		hp				
hydrogen ion activity (negative log of)		pH				
parts per million		ppm				
parts per thousand	ppt, ‰					
volts	V					
watts	W					

FISHERY MANAGEMENT REPORT NO. 12-52

**ANNUAL MANAGEMENT REPORT FOR
GROUNDFISH FISHERIES IN THE KODIAK, CHIGNIK,
AND SOUTH ALASKA PENINSULA MANAGEMENT AREAS, 2011**

By

Trent Hartill

Alaska Department of Fish and Game, Division of Commercial Fisheries, Kodiak

Paul Converse

Alaska Department of Fish and Game, Division of Commercial Fisheries, Kodiak

and

Kim Phillips

Alaska Department of Fish and Game, Division of Commercial Fisheries, Kodiak

Alaska Department of Fish and Game
Division of Sport Fish, Research and Technical Services
333 Raspberry Road, Anchorage, Alaska, 99518-1565

December 2012

The Fishery Management Reports series was established in 1989 by the Division of Sport Fish for the publication of an overview of management activities and goals in a specific geographic area, and became a joint divisional series in 2004 with the Division of Commercial Fisheries. Fishery Management Reports are intended for fishery and other technical professionals, as well as lay persons. Fishery Management Reports are available through the Alaska State Library and on the Internet: <http://www.adfg.alaska.gov/sf/publications/>. This publication has undergone regional peer review.

*Trent Hartill,
Alaska Department of Fish and Game, Division of Commercial Fisheries
211 Mission Road, Kodiak, AK 99615, USA*

*Paul Converse,
Alaska Department of Fish and Game, Division of Commercial Fisheries
211 Mission Road, Kodiak, AK 99615, USA*

and

*Kim Phillips
Alaska Department of Fish and Game, Division of Commercial Fisheries
211 Mission Road, Kodiak, AK 99615, USA*

This document should be cited as:

Hartill, T., P. Converse, and K. Phillips. 2012. Annual management report for groundfish fisheries in the Kodiak, Chignik, and South Alaska Peninsula Management Areas, 2011. Alaska Department of Fish and Game, Fishery Management Report No.12-52, Anchorage.

The Alaska Department of Fish and Game (ADF&G) administers all programs and activities free from discrimination based on race, color, national origin, age, sex, religion, marital status, pregnancy, parenthood, or disability. The department administers all programs and activities in compliance with Title VI of the Civil Rights Act of 1964, Section 504 of the Rehabilitation Act of 1973, Title II of the Americans with Disabilities Act (ADA) of 1990, the Age Discrimination Act of 1975, and Title IX of the Education Amendments of 1972.

If you believe you have been discriminated against in any program, activity, or facility please write:

ADF&G ADA Coordinator, P.O. Box 115526, Juneau, AK 99811-5526
U.S. Fish and Wildlife Service, 4401 N. Fairfax Drive, MS 2042, Arlington, VA 22203
Office of Equal Opportunity, U.S. Department of the Interior, 1849 C Street NW MS 5230, Washington DC 20240

The department's ADA Coordinator can be reached via phone at the following numbers:

(VOICE) 907-465-6077, (Statewide Telecommunication Device for the Deaf) 1-800-478-3648,
(Juneau TDD) 907-465-3646, or (FAX) 907-465-6078

For information on alternative formats and questions on this publication, please contact:

ADF&G Division of Sport Fish, Research and Technical Services, 333 Raspberry Road, Anchorage, AK 99518 (907) 267-2375.

TABLE OF CONTENTS

	Page
LIST OF TABLES.....	ii
LIST OF FIGURES	iii
LIST OF APPENDICES	iii
ABSTRACT	1
INTRODUCTION.....	1
PACIFIC COD	2
Parallel Season.....	2
Background.....	2
State-Waters Season	3
Background.....	3
2011 Regulatory Changes.....	4
Pacific Cod Harvest Monitoring and Dockside Sampling	7
BLACK ROCKFISH	7
Background.....	7
2011 Black Rockfish Overview	9
SKATES	10
Background.....	10
SABLEFISH.....	11
LINGCOD	11
PARALLEL WALLEYE POLLOCK FISHERIES.....	12
NON-PELAGIC TRAWL CLOSURES.....	12
REFERENCES CITED	13
TABLES AND FIGURES.....	15
APPENDIX A: FREQUENTLY USED ACRONYMS AND KEY WORDS	57
APPENDIX B: KODIAK, CHIGNIK, AND SOUTH ALASKA PENINSULA MANAGEMENT AREAS STATE-WATER STATISTICAL AREAS FOR GROUND FISH.....	59

LIST OF TABLES

Table	Page
1. Top 30 species removals, by total weight, as reported on groundfish fish tickets from state waters of Kodiak, Chignik, and South Alaska Peninsula areas, 2011.....	16
2. Groundfish emergency orders issued for the Kodiak, Chignik, and South Alaska Peninsula areas, 2011....	17
3. Pacific cod harvest, in millions of pounds, from Central and Western Gulf of Alaska Management areas, 1990–2011.....	18
4. Kodiak Area Pacific cod harvest during parallel Pacific cod seasons, by gear type, 1997–2011.....	19
5. Chignik Area Pacific cod harvest during parallel Pacific cod seasons by gear type, 1997–2011.	20
6. South Alaska Peninsula Area Pacific cod harvest during parallel Pacific cod seasons by gear type, 1997–2011.....	21
7. Regulatory development of the state-waters Pacific cod seasons in the Kodiak, Chignik, and South Alaska Peninsula areas.	22
8. Harvest, effort, and value from Kodiak, Chignik, and South Alaska Peninsula areas state-waters Pacific cod seasons, 2000–2011.	23
9. Kodiak Area state-waters Pacific cod season openings, 1997–2011.....	25
10. Kodiak Area state-waters Pacific cod harvest and effort by gear type, 1997–2011.....	27
11. Pacific cod harvest from the Kodiak Area state-waters season by statistical area, 2011.....	28
12. Chignik Area state-waters Pacific cod season openings, 1997–2011.....	29
13. Pacific cod harvest from the Chignik Area state-waters season by statistical area, 2011.	31
14. Chignik Area state-waters Pacific cod harvest and effort by gear type, 1997–2011.....	32
15. South Alaska Peninsula Area state-waters Pacific cod season openings, 1997–2011.....	33
16. South Alaska Peninsula Area state-waters Pacific cod harvest and effort by gear type, 1997–2011.....	35
17. Pacific cod harvest from the South Alaska Peninsula Area state-waters season by statistical area, 2011.....	36
18. Kodiak Area black rockfish jig season harvest and effort, 1990–2011.....	37
19. Chignik Area black rockfish jig season harvest and effort, 1990–2011.....	38
20. South Alaska Peninsula Area Eastern District black rockfish jig season harvest and effort, 1990–2011.	39
21. Regulation development of the black rockfish fishery in the Kodiak, Chignik and South Alaska Peninsula areas.	40
22. Jig and non-jig harvest of black rockfish from the Kodiak, Chignik, and South Alaska Peninsula Eastern District, 1990–2011.	41
23. Jig harvest of black rockfish from Kodiak, Chignik, and South Alaska Peninsula areas by district, 2011.....	42
24. All skate species harvest from the Central and Western Gulf of Alaska, 1995–2011.....	43
25. Lingcod harvest from directed and non-directed fisheries in the Kodiak, Chignik, and South Alaska Peninsula areas, 1988–2011.	44
26. Central and Western Gulf of Alaska walleye pollock fishery openings, 2006–2011.....	45
27. Walleye pollock harvest in millions of pounds from the Central and Western Gulf of Alaska, 1995–2011.....	46

LIST OF FIGURES

Figure	Page
1. National Marine Fisheries Service statistical and reporting areas.	47
2. Alaska Department of Fish and Game groundfish registration areas and regions.	48
3. Pacific cod lengths by area from the 2011 state-waters fisheries in Kodiak, Chignik, and South Alaska Peninsula areas.	49
4. Pacific cod lengths by gear type from the 2011 state-waters fisheries in the Kodiak Area.	50
5. Age composition of Pacific cod sampled from the 2011 state-waters fishery in Kodiak, Chignik, and South Alaska Peninsula areas.	50
6. Kodiak, Chignik, and South Alaska Peninsula black rockfish management areas and districts, 2011.	51
7. Size composition of black rockfish sampled from the 2011 fishery in the Kodiak Area.	52
8. Age composition of black rockfish sampled from the 2011 fishery in the Kodiak Area.	52
9. Chignik and South Alaska Peninsula area non-pelagic trawl gear closures, 2011.	53
10. Kodiak Area non-pelagic trawl gear closures, 2011.	54
11. Karluk trawl closure, 2011.	55

LIST OF APPENDICES

Appendix	Page
A1. Frequently used acronyms and key words.	58
B1. Kodiak Management Area state-waters statistical areas for groundfish.	60
B2. Chignik Management Area state-waters statistical areas for groundfish.	61
B3. South Alaska Peninsula Area state-waters statistical areas for groundfish.	62

ABSTRACT

This report summarizes harvest, effort, and management of commercial state-waters and parallel groundfish fisheries managed by the Alaska Department of Fish and Game (ADF&G) in the Kodiak, Chignik, and South Alaska Peninsula areas during 2011. The principal state-waters fisheries include Pacific cod *Gadus macrocephalus* and black rockfish *Sebastes melanops*. Walleye pollock *Theragra chalcogramma* and Pacific cod are the dominant species harvested during parallel fisheries. The 2011 harvest of Pacific cod during state-waters fisheries totaled 42.42 million pounds from 275 vessels, for an estimated exvessel fishery value of \$12.14 million. Black rockfish were predominantly harvested in the Kodiak Area. Kodiak black rockfish harvest totaled 124,900 pounds for an estimated exvessel value of approximately \$49,000. During parallel fisheries, ADF&G adopts most seasons, bycatch limits, and allowable gear types established by the National Marine Fisheries Service for federal fisheries that occur in the adjacent exclusive economic zone.

Key words: Westward Region, Kodiak, Chignik, South Alaska Peninsula, groundfish, Pacific cod, black rockfish, state-waters, parallel, commercial fisheries, exvessel, trawl, Annual Management Report, AMR.

INTRODUCTION

This report provides an overview of commercial groundfish fisheries in the Kodiak, Chignik, and South Alaska Peninsula areas and summarizes commercial catch information and regulations that guide management of groundfish resources. Appendix A defines frequently used acronyms and key words associated with Westward Region groundfish fisheries.

Commercial groundfish fisheries inside state-waters (0–3 nmi) are managed by Alaska Department of Fish and Game (ADF&G) under regulations developed by the Alaska Board of Fisheries (BOF). Management authority for commercial groundfish fisheries in the exclusive economic zone (EEZ; 3–200 nmi) off Alaska is delegated to National Marine Fisheries Service (NMFS) through the Magnuson-Stevens Fishery Conservation and Management Act (MSFCMA 2007). Federal commercial groundfish fisheries are prosecuted under guidelines developed by the North Pacific Fishery Management Council (NPFMC).

Several commercially important groundfish species managed by NMFS in the EEZ also occur inside state waters (Figures 1 and 2). At the beginning of each year, ADF&G issues an emergency order (EO) establishing parallel groundfish seasons to facilitate consistency of state and federal regulations for specific transboundary species. Unless superseded by BOF regulations, the state adopts most NMFS rules during parallel fisheries such that seasons, allowable gear, bycatch limits, and inseason management actions mirror federal regulations of the adjacent federal fisheries. However, federal sector allocations in the EEZ, based on processing activity, are not recognized in state waters. Adjacent federal waters opened to a gear type, whether to both catcher processor vessels and catcher vessels, or only one of those, will be considered open in state waters to both catcher vessels and catcher processor vessels until closed to all vessels using the designated gear type.

State-waters seasons occur when the State of Alaska establishes harvest quotas independent of federal/parallel fisheries. In the Westward Region, ADF&G establishes state-waters seasons for Pacific cod *Gadus macrocephalus*, sablefish *Anoplopoma fimbria*, lingcod *Ophiodon elongates*, black rockfish *Sebastes melanops*, and dark rockfish *Sebastes ciliatus*. State-waters seasons for Pacific cod and sablefish are prosecuted exclusively within state waters (0–3 nmi). The state has full management authority from shore to the 200 nautical mile boundary of the EEZ for lingcod, dark rockfish, and black rockfish.

During 2011, Pacific cod and walleye pollock *Theragra chalcogramma* comprised the largest volume of groundfish harvested from state waters in the Kodiak, Chignik, and South Alaska Peninsula areas (Table 1). All directed walleye pollock harvest occurred during parallel seasons while Pacific cod were harvested during parallel and state-waters seasons. In 2011, 20 emergency orders were issued to enact inseason regulatory changes to groundfish fisheries in the Kodiak, Chignik, and South Alaska Peninsula management areas (Table 2).

PACIFIC COD

Pacific cod are a transoceanic species and are managed by NMFS as a single Gulf of Alaska (GOA) stock (Shimada and Kimura 1994). The 2011 GOA Pacific cod Acceptable Biological Catch (ABC) of 191,361,016 million pounds (Thompson et al. 2010) was apportioned 62% to the Central Gulf of Alaska (CGOA; 118.64 million pounds), 35% to the Western Gulf of Alaska (WGOA; 61.80 million pounds), and 3% to the Eastern Gulf of Alaska (EGOA 5.74 million pounds) federal management areas.

Within the CGOA and WGOA, the ABC is further apportioned such that 75% of the annual ABC is allocated as total allowable catch (TAC) in parallel/federal fisheries, while 25% of the annual ABC is allocated as guideline harvest level (GHL) in state-waters fisheries. The TAC limits catch in federal and parallel Pacific cod fisheries and apportions resources among federal management areas to distribute fishing effort. The GHL limits catch during state-waters Pacific cod fisheries and apportions Pacific cod among state management areas.

The 2011 CGOA Pacific cod harvest, including federal, parallel, and state-waters seasons, totaled 111.73 million pounds (Table 3), 6% under the CGOA ABC. Approximately 40% of the CGOA total harvest was taken from state waters (Table 3). Total Pacific cod harvest from the WGOA during 2011 totaled 65.05 million pounds (Table 3), or 3% under the WGOA ABC. Approximately 56% of the total WGOA harvest was taken from state waters.

PARALLEL SEASON

Background

ADF&G annually issues an emergency order establishing parallel Pacific cod seasons inside state waters (0–3 nmi) of the Kodiak, Chignik, and South Alaska Peninsula management areas. Emergency orders establishing parallel Pacific cod seasons adopt most federal fishing regulations including gear and vessel restrictions, area closures, bycatch limits, or other regulations the commissioner determines reasonably necessary to accommodate federal fishery management measures inside state waters. NMFS area closures, including Steller sea lion areas, are in effect during parallel fisheries. Federal seabird avoidance requirements are recognized by the state during parallel Pacific cod fisheries as are vessel monitoring system and catch reporting requirements. Vessels participating in parallel Pacific cod fisheries are not required to possess a Federal Fishing Permit (FFP) or a License Limitation Program (LLP) permit.

Most state waters in the Westward Region are closed to non-pelagic trawling. During directed parallel Pacific cod seasons, all Pacific cod and walleye pollock must be retained under state regulation 5 AAC 28.070 (e) *Groundfish Possession and Landing Requirements*. Pacific cod retained as bycatch to other directed groundfish fisheries are typically established at 20% by target species weight as designated by NMFS.

Several actions were taken by NMFS and NPFMC in response to the Steller sea lion (SSL) Biological Opinion and Incidental Take Statement (BiOp) issued in November of 2001. Actions taken to mitigate the effects of commercial fishing effort on SSLs are best understood by referencing the appropriate federal documents (National Marine Fisheries Service 2000, 2001a, 2001b). Notable actions included closing historical fishing grounds adjacent to sea lion rookeries and haulouts and dividing the federal Pacific cod fishery into two distinct seasons. Restructured season dates resulted in the designation of “A” and “B” seasons. Annually, NMFS allocates 60% of the federal TAC to the “A” season which begins January 1 for fixed gear vessels and January 20 for trawl vessels. Incidental harvest of Pacific cod that occurs after closure of the “A” season is deducted from the remaining 40% of the annual TAC. If sufficient TAC remains for a commercial fishery the remaining TAC is made available for the “B” season beginning September 1.

2011 Central Gulf of Alaska Parallel Season

The parallel CGOA “A” season opened January 1, 2011, and closed January 29, 2011, when the “A” season TAC was achieved. The CGOA parallel Pacific cod “B” season opened September 1 and closed September 17 when the “B” season TAC was achieved.

Harvest of Pacific cod within the Kodiak Management Area during the 2011 parallel season totaled 13.82 million pounds (Table 4). The majority of Pacific cod were harvested using pot gear (7.80 million pounds) and longline gear (4.75 million pounds).

The Chignik Management Area is predominantly located within the CGOA although a small portion of the Chignik Area lies within the WGOA federal management area (Figures 1 and 2). Most productive Pacific cod fishing grounds in the Chignik Area are closed to all fishing during federal and parallel Pacific cod fisheries due to closures implemented in 2001 as part of the SSL BiOp. As a result, Chignik Area parallel season Pacific cod harvests have generally been less than 500,000 pounds annually. During 2011, approximately 259,000 pounds were harvested by pot vessels (Table 5).

2011 Western Gulf of Alaska Parallel Season

The WGOA “A” season opened January 1, 2011, and closed on February 16, 2011. The WGOA “B” season opened September 1, 2011, and closed October 26, 2011. Harvest of Pacific cod from state waters of the South Alaska Peninsula Area during the 2011 parallel season totaled 18.61 million pounds (Table 6). The majority of Pacific cod were harvested by vessels using pot gear (17.48 million pounds).

STATE-WATERS SEASON

Background

In 1996, the BOF developed state-waters Pacific cod management plans for fisheries in three Westward Region groundfish areas: Kodiak, Chignik, and South Alaska Peninsula. For each area, unique management plans were established that defined season dates, legal gear types, GHL allocation and rollover provisions, vessel registration requirements, and gear storage regulations for each management area (Table 7). Allowable gear types (pot and jig gear only) and gear limits (60 pots and 5 jig machines) were the same across the three newly adopted management plans. The first state-waters Pacific cod seasons occurred in 1997.

GHLs for each management area are set as a percentage of the annual federal Pacific cod ABC. State-waters GHLs were initially capped at 15% of the ABC established for the federal WGOA and CGOA management areas. GHLs were structured to increase incrementally to 20% and then 25% of federal ABCs if harvest in any year was within 10% of the established state-waters GHL. By 2003, each management area achieved the maximum GHL increment such that GHLs were fixed at 25% for the South Alaska Peninsula, 12.50% for the Kodiak Area, 8.75% for the Chignik Area, and 3.75% for the Cook Inlet Area.

2011 Regulatory Changes

Beginning in 2012, management of federal Pacific cod fisheries in the CGOA and WGOA will transition from derby style fisheries to individual gear sector allocations. In preparation for the new federal management structure, the BOF modified the Kodiak, Chignik and South Alaska Peninsula Pacific cod management plans to coordinate state-waters and federal seasons. For each management area, state-waters season opening dates were changed to seasonally coincide with the closure of the applicable federal gear sector. Additionally, if a GHL has not been taken upon closure of the federal pot gear sector B season, the state-waters season may reopen to all legal gear types, depending on amount of GHL remaining. While the management plans were modified in 2011, the regulations will not take effect until the 2012 season. A full description of the regulatory changes will be outlined in the 2012 version of this report.

2011 State-Waters Pacific Cod Season Overview

Over 42 million pounds of Pacific cod were harvested from Kodiak, Chignik, and South Alaska Peninsula areas by 275 vessels during 2011 (Table 8). Total exvessel fishery value was approximately \$12.13 million. The 2011 harvest exceeded the total 2010 Pacific cod state-waters catch by approximately 4.4 million pounds (Table 8).

Kodiak Area

The 2011 Kodiak Area GHL was based on 12.5% of the 2011 CGOA ABC resulting in a GHL of 14.83 million pounds. Pot and jig gear vessels were each allocated 50% of the total GHL or 7.41 million pounds. Pot vessels larger than 58 feet in overall length were restricted to 25% of the total state-waters GHL, or 3.71 million pounds, before September 1. The state-waters season began February 5, 2011, seven days after the closure of the parallel CGOA Pacific cod “A” season (Table 9).

Total 2011 harvest of Pacific cod from the Kodiak Area state-waters season was 15.27 million pounds taken by 161 vessels (Table 8). By gear type, pot gear vessels harvested 8.13 million pounds while jig vessels harvested 7.14 million pounds (Table 10). The estimated exvessel fishery value was \$4.12 million (Table 8). Fishermen harvested Pacific cod from 28 statistical areas during the season (Table 11). Notable harvests occurred in Chiniak Bay (525733), Ugak Bay (525701) on the eastside of Kodiak Island, and Izhut Bay (525806) on the eastside of Afognak Island (Table 11; Appendix B1).

Kodiak Pot Gear Season

The Kodiak Area state-waters pot gear season for Pacific cod opened February 5, 2011. A total of 48 vessels registered 2,880 pots for the 2011 season. Harvest totaled 8.13 million pounds which exceeded the pot gear allocation by approximately 717,000 pounds (10%). The exvessel

value of the 2011 pot gear season was \$2.84 million based on an initial average price of \$0.35 per pound (Table 10)

Daily average harvest varied throughout the season, peaking at approximately 450,000 pounds per day. Weather and participation were the primary factors influencing daily harvest rates. In general, vessels averaged between 15,000 and 20,000 pounds per day. Vessels over 58 feet in length accounted for approximately 40% of the total pot gear harvest. The season for all pot vessels closed February 18 after the pot gear GHL was attained (Table 9). The 2011 pot gear season was open for 13 days.

Kodiak Jig Gear Season

The Kodiak Area state-waters jig gear season for Pacific cod opened February 5, 2011. The jig gear season closed on April 14, 2011, when the total Kodiak Area state-waters Pacific cod GHL was attained. A total of 132 jig vessels landed 7.13 million pounds (Table 10). The exvessel fishery value for the Kodiak Area state-waters jig gear fishery totaled approximately \$1.95 million based on an initial average price of \$0.35 per pound. Through mid-March, weekly harvest averaged just under 300,000 pounds and 48 deliveries. Beginning in mid-March and lasting until the season closure, the weekly harvest averaged approximately 1.13 million pounds and 148 deliveries.

Chignik Area

The 2011 Chignik Area GHL was based on 8.75% of the 2011 CGOA ABC resulting in a GHL of 10.38 million pounds. The season for pot and jig gear opened by regulation on March 1 (Table 12). Vessels using pot gear were allocated 90% of the GHL or 9.34 million pounds. Vessels using jig gear were allocated 10% or 1.04 million pounds.

The total 2011 Chignik Area state-waters season Pacific cod harvest was 10.34 million pounds taken by 32 vessels (Table 8). By gear type, 23 pot vessels harvested 10.12 million pounds while 10 jig vessels harvested 224,400 pounds; one vessel used both pot and jig gear. The estimated exvessel fishery value was \$3.11 million (Table 8). Most harvest occurred in statistical areas around Mitrofanina Island (585531), Semidi Islands (565602), and near Chiginagak Bay (565633; Table 13; Appendix B2).

Chignik Pot Gear Season

A total of 23 vessels registered for the 2011 season, up from 16 vessels in 2010. Harvest totaled 10.12 million pounds¹ of Pacific cod (Table 14). Consistent with recent seasons, weekly harvest rates were near or at all-time highs, ranging from 1.6 to 4.1 million pounds. The majority of catch was tendered to shore-based processors outside of the Chignik Area.

While the season opened on March 1, it wasn't until March 9 that the number of vessels peaked. Many vessels entering the fishery later in the season were transitioning from federal Pacific cod fisheries in the Bering Sea. As more vessels entered the fishery, daily harvest generally increased as well. The pot gear season closed March 17 when the pot gear GHL was achieved (Table 12).

¹ Total includes Pacific cod harvested after the August 15 GHL allocation rollover date.

Chignik Jig Gear Season

Minimal jig gear effort occurred in the Chignik Area during 2011. Similar to past seasons, limited market availability in the Chignik Area likely limited effort. Ten jig vessels harvested 224,400 pounds (Table 14). The final jig gear delivery for the 2011 season occurred on August 17, 2011, and the season closed by regulation on December 31, 2011.

Allocation Rollover

Several provisions in the *Chignik Area Pacific Cod Management Plan* (5 AAC 28.537) provide additional harvest opportunity if ADF&G determines GHLS will not be attained by the regulatory closure date of December 31. The management plan allows unharvested jig gear GHL to be taken by either pot or jig gear beginning August 15 (Table 12). ADF&G reopened the Chignik Area to both pot and jig gear by EO on August 15 after determining the 2011 jig gear GHL would not be achieved. Pot gear effort resumed mid-October after closure of the CGOA federal/parallel Pacific cod “B” season and continued into mid-November. Harvest information from the rollover period is confidential due to the limited number of participating processors.

South Alaska Peninsula Area

The 2011 South Alaska Peninsula Area GHL was based on 25% of the 2011 WGOA ABC of 66.97 million pounds resulting in a state-waters GHL of 16.74 million pounds. The state-waters season may open seven days after closure of the federal WGOA Pacific cod season. However, opening of the fishery is delayed 24 hours if the National Weather Service marine weather 48-hour forecast issued for Area 155 contains gale warnings. The season opening delays may continue on a rolling 24 hour basis for seven days beyond the initial opening date, when the season will open regardless of gale warnings. The 2011 South Alaska Peninsula state-waters Pacific cod season was delayed 48 hours due to gale warnings, and opened February 25, 2011, nine days after the closure of the parallel WGOA Pacific cod season (Table 15). Vessels using pot gear were capped at 85 % of the total GHL or 14.23 million pounds (Table 16). The remaining GHL (2.51 million pounds) was available to jig vessels.

The 2011 total state-waters season Pacific cod harvest was 16.81 million pounds taken by 82 vessels (Table 8). By gear type, pot vessels harvested 14.36 million pounds while jig vessels harvested 2.44 million pounds; nine vessels used both pot and jig gear (Table 16). The estimated exvessel fishery value was \$4.90 million (Table 8). Harvest occurred in 24 statistical areas during the 2011 state-waters season (Table 17). Notable harvests occurred near Sanak Island (625401) and around the Shumagin Islands (605502 and 605504; Table 17; Appendix B3).

South Alaska Peninsula Pot Gear Season

A total of 51 vessels registered 3,060 pots for the 2011 season. Forty-nine vessels actively participated in the fishery. The 2011 pot gear harvest totaled 14.36 million pounds which exceeded the pot gear allocation by approximately 131,000 pounds (<1%). The preliminary exvessel value of the 2011 pot gear season was \$4.16 million based on an initial average price of \$0.29 per pound. Historically, Pacific cod effort is concentrated around the Shumagin Islands near the eastern boundary of the management area and further west near Sanak Island (Appendix B3).

A total of 28 vessels targeted Pacific cod with pot gear in the proximity of the Shumagin Islands. Harvest totaled approximately 9.0 million pounds which accounted for 63% of the total 2011 South Alaska Peninsula state-waters Pacific cod catch. Most pot vessels began fishing on the

first day of the season (February 25). Daily harvest during the first five days of the fishery averaged approximately 430,000 pounds. Harvest rates increased for the remainder of the season, averaging approximately 660,000 pounds per day.

The state-waters season for vessels using pot gear closed March 11, 2011; the season was open for 16 days (Table 15).

South Alaska Peninsula Jig Gear Season

The 2011 jig gear season opened concurrently with pot gear on March 5, 2011. Forty-two jig vessels harvested 2.44 million pounds for an estimated exvessel fishery value of \$684,000 based on an initial price of \$0.28 per pound (Table 16). Effort and harvest were relatively consistent from the beginning of March through the middle of April, when weekly harvest ranged from 150,000 to 300,000 pounds. Effort and harvest increased the final two weeks season when nearly half of the GHF was harvested. The jig gear season closed on April 26, 2011 when the jig gear GHF was attained. The 2011 season was open for a total of 60 days (Table 15). Most effort was focused around the Shumagin Islands near the community of Sand Point.

Pacific Cod Harvest Monitoring and Dockside Sampling

Participating processors reported landing information daily to ADF&G management staff. Daily harvest reports were additionally obtained from vessel operators using pot gear. Daily pot vessel harvest reports included the daily number of pots pulled, pounds retained, and fishing location for each vessel. Processor and vessel catch reports were subsequently referenced against landing data derived from the Interagency Electronic Reporting System (eLandings) to track daily catch and forecast harvests.

Dockside sampling was conducted in the port of Kodiak throughout the state-waters season and in Sand Point and King Cove during periods of high fishing effort. Dockside samplers conducted confidential interviews with vessel operators to obtain information on catch location, catch per unit effort, bycatch, and fishing effort. Samplers also collected data on fish length, weight, sex, reproductive status, and age.

Dockside sampling staff in Kodiak, King Cove, and Sand Point conducted 277 skipper interviews and collected biological samples from 301 deliveries from the Kodiak, South Alaska Peninsula, and Chignik management areas. During 2011, samplers collected 13,809 fish lengths, 1,858 individual fish weights, 1,897 observations of sex and maturity and extracted 1,897 otolith pairs for aging.

Average fish length varied slightly across areas and gear types (Figure 3). Average Pacific cod length was 65 cm in Kodiak, 61 cm in Chignik, and 62 cm in South Alaska Peninsula area. Among gear types Kodiak Area Pacific cod lengths sampled from jig and pot gear averaged 64 cm in length (Figure 4). Preliminary analysis indicates the age of Pacific cod harvested in 2011 ranged from 3 to 10 years. Pacific cod were predominantly ages-5 and 6 for all areas (Figure 5).

BLACK ROCKFISH

Background

Prior to 1990, black rockfish had limited market value and generally were not harvested commercially in the Kodiak Area. Harvests increased considerably in 1991 as markets emerged and fishermen began to target previously unexploited populations (Table 18). Fishermen

primarily targeted black rockfish with jig gear, although some black rockfish were incidentally harvested during longline and trawl fisheries. Effort was concentrated in areas easily accessible from the city of Kodiak. Fishery production fell sharply following 1991, presumably due to over exploitation of localized populations. Lower prices and other emerging fisheries may have been additional factors that limited production after 1991. Stocks were similarly targeted along the Alaska Peninsula and adjacent to Chignik in 1995 (Tables 19 and 20). Fishermen predominantly targeted black rockfish in waters near the community of Sand Point.

Prior to 1997 black rockfish fisheries were managed by NMFS as part of the pelagic shelf rockfish group that included dusky *Sebastes variabilis* (previously *S. ciliatus*), yellowtail *S. flavidus*, and widow *S. entomelas* rockfish. Annually, a single ABC was established for all species combined in the pelagic shelf rockfish group. However, dusky rockfish were the dominant species in the pelagic shelf group and were the most frequently observed species during NMFS rockfish assessment surveys. As a result, the ABC was largely based on dusky rockfish biomass estimates, resulting in few restrictions on the take of the other species within the group. Under this management strategy, ADF&G was concerned about localized depletion given black rockfish are long-lived near shore species that tend to be unevenly distributed. During some years ADF&G closed state waters by emergency order to prevent overexploitation of the stock although the adjacent federal waters would remain open to directed fishing.

Given the majority of black rockfish were believed to reside inside state waters, ADF&G submitted a fisheries management plan amendment to the NPFMC in 1997 requesting that NMFS relinquish black rockfish management within the EEZ of the GOA to the state. The amendment passed and was implemented effective April 5, 1998. From 1997 to the time the amendment was implemented in April 1998, the NPFMC separated black rockfish from the larger pelagic shelf rockfish group, enabling federal fishery managers to place a 573,201 pound ABC on black rockfish in the CGOA. The ABC was based on NPFMC's Tier 6 guidelines, which apply to fisheries with little stock assessment information. Harvest limits were set at 75% of average production from 1978–1995.

ADF&G fishery managers applied the 75% Tier 6 catch limit to fisheries in the Cook Inlet, Kodiak, and Chignik areas when setting preseason guidelines in 1997. Given the NPFMC was in the process of delegating authority to the state, limits were set as interim measures and were only enforceable in state waters. Harvest levels for the directed fishery were set low enough to accommodate potential black rockfish bycatch² in other fisheries and not exceed the 573,201 pound total. During this time, ADF&G began assigning GHLS to state groundfish management areas within the CGOA to better distribute effort and discourage localized fishing effort. As a result, the 1997 GHL for the Kodiak Area was set at 170,000 pounds (Table 21). The GHL was further divided into four sections: three sections that encompassed the areas of historical harvest and one section with a low GHL for the remainder of the Kodiak Area to allow exploratory fishing. In 1998, the Kodiak Area was further subdivided into seven districts each with separate GHLS (Figure 6). The Chignik and South Alaska Peninsula Area Eastern District GHLS were established at 100,000 pounds each.

The BOF adopted several measures for black rockfish fisheries in the Kodiak and Chignik areas that became effective prior to the start of the 2003 fisheries (Table 21). Kodiak Area vessel operators were required to register specifically for the black rockfish fishery preventing

² Black rockfish bycatch is allowed at 5% of the target species weight in all fisheries.

simultaneous participation during Pacific cod and black rockfish seasons. Prior to this action management staff were often unable to assess effort given that vessels could target Pacific cod and rockfish under a common groundfish registration. The BOF also implemented a 5,000-pound per five-day harvest and landing trip limit in the Kodiak Area designed to slow the pace of harvest and provide ADF&G more time to effectively manage small GHGs at the district level. Descriptions of black rockfish fishing districts, previously called sections, were also formally adopted in regulation as groundfish registration districts. Likewise, superexclusive registration was adopted for the Chignik Area, and the area was subdivided into three districts for management purposes.

In 2005, the BOF divided the South Alaska Peninsula Eastern District into three management sections in an effort to distribute harvest throughout the district. Harvest was additionally limited to no more than 45,000 pounds from any Eastern District section. Also during 2005, the BOF adopted a regulation in the Kodiak Management Area allowing jig vessels registered for directed groundfish fisheries, other than black rockfish, to register for incidental black rockfish harvest of up to 2,500 pounds per trip in the Kodiak Area, with a five-day landing limit of 5,000 pounds (Table 21).

During 2006 and 2007, approximately 30,000 pounds of black rockfish were reported annually as bycatch to non-jig fisheries (Table 22). The majority of reported bycatch occurred during federally managed trawl fisheries in the EEZ. In response, ADF&G began monitoring rockfish bycatch from 2008 federal trawl fisheries. ADF&G personnel concluded the elevated black rockfish bycatch levels were a result of misidentification or misreporting on fish tickets, and that most fish identified as black rockfish by processing plants were either dark or dusky rockfish. ADF&G has continued limited federal rockfish bycatch monitoring since that time.

In 2011, the BOF consolidated Kodiak rockfish regulations and adopted a rockfish management plan into regulation. The plan followed most existing regulations with the following distinctions: 1) provisions were added to address jig catcher-processors; 2) incidental harvest allowance (2,500 pounds per trip) was repealed; 3) bycatch of black rockfish and dark rockfish are established by emergency order; and 4) if GHG remains after August 15, trip limits may be increased to 7,000 pounds.

2011 Black Rockfish Overview

The black rockfish fishery in the Kodiak, Chignik and South Alaska Peninsula area opened January 1, 2011. GHGs were attained in four of seven districts in Kodiak Area during 2011, while the GHGs were not met in the South Alaska Peninsula or Chignik areas.

Kodiak Area Fishery

Similar to previous years, the 2011 Kodiak Area black rockfish GHG was 175,000 pounds. Effort and harvest primarily occurred in the Northeast, Eastside, Afognak, and Southeast districts from January through October, and little or no fishing effort occurred in the Southwest, Westside, or Mainland districts (Table 23). A total of 21 vessels harvested 124,900 pounds of black rockfish during 2011 (Table 18). The exvessel value of the fishery was \$48,711 based on an average price of \$0.39 per pound.

Chignik Area Fishery

The 2011 Chignik Area black rockfish GHL was 100,000 pounds. Harvest was additionally capped at 45,000 pounds per district to distribute harvest throughout the management area. A single vessel participated in the fishery resulting in confidential harvest information (Table 19). Processor interest and market availability likely limited participation in the fishery.

South Alaska Peninsula Area Eastern District Fishery

Since 2006, the eastern district of the South Alaska Peninsula Area black rockfish GHL has been set at 75,000 pounds. Similar to the Chignik Area, a single vessel participated in the fishery and harvest information is confidential (Table 20).

Black Rockfish Harvest Monitoring

Black rockfish harvests are monitored through fish ticket records and dockside sampling of commercial catches. Information collected by dockside samplers includes fishing location and effort (days fished) as well as fish length, weight, sex, and reproductive maturity. Additionally, otoliths are collected for age determination. Due to limited participation in the Chignik and South Alaska Peninsula areas, 2011 black rockfish dockside data collection was limited to the Kodiak Area.

Mean size of black rockfish sampled from landings in the Kodiak Area during 2011 was 48 cm in length (Figure 7). Otoliths were collected from 861 black rockfish for aging during the 2011 season. Ages for black rockfish in 2011 ranged from 6 to 54 years, with an average age of 19 (Figure 8).

SKATES

Background

Prior to 2003, skates were managed by NMFS under the “other species” assemblage that also included sharks, sculpins, squid, and octopi (Gaichas et al. 2003). The annual TAC for the assemblage was based on 5% of the sum of all other GOA fishery management plan (FMP) target species TACs. In 2004, all skates were separated from the “other species” assemblage, and managed as a single complex.

Skates are predominantly harvested incidentally during longline and trawl fisheries in the Kodiak Area. Traditionally, most skates harvested in the Kodiak Area were discarded at sea, ground into fishmeal, or discarded onshore once delivered to shore-based processors in unsorted catches from trawl fisheries. The majority of historic harvests occurred in federal waters, although large harvests inside state waters have occurred (Table 24).

Skates have been managed in state waters under parallel rules since the late 1980s. In 1998, the BOF required a commissioner’s permit to target skates in state waters. This regulation gave ADF&G the authority to restrict fishing depth, define seasons, specify fishing areas, establish minimum sizes, specify legal gear, and require harvest logbooks and other conditions determined necessary for conservation and management purposes. At that time the state did not establish separate state-waters harvest quotas or separate state-waters seasons. Thus, when the skate assemblage closed in federal waters, that closure was also in effect for state waters under the parallel structure of the global EO.

Beginning in 2003, emerging markets for skate products, primarily in the Republic of Korea, resulted in increased interest and price for GOA skates. At times, skates are more valuable than some species of salmon and several other species of groundfish. Additionally, fishermen targeting skates were able to retain Pacific cod up to 20% of their retained skate weight, making even relatively small amounts of bycatch lucrative for participants. As a result, the skate harvest increased significantly in the CGOA (Table 24).

In 2006, NMFS placed skates in bycatch status and disallowed directed fishing due to concerns of overfishing and the lack of information on skate biology or population size. At that time, ADF&G discontinued issuing commissioner's permits allowing for directed harvest of skates within state waters.

2011 Skate Fisheries

The 2011 CGOA state and federal waters harvest of skates as bycatch totaled 5.14 million pounds harvested by 218 vessels. Approximately 9% of all CGOA harvest occurred inside state waters of the CGOA (Table 24). A total of 75 vessels harvested 254,567 pounds of skates in the WGOA. Approximately 1% of the total harvest occurred in state waters (Table 24). Most skates were harvested during trawl and longline fisheries.

SABLEFISH

Sablefish in state waters are managed separately from the federal sablefish individual fishing quota (IFQ) program. Habitat for mature sablefish is limited in most state waters of the Westward Region. Sablefish are typically associated with deeper waters near the continental shelf and abundance is limited inside state waters east of Unimak Pass.

The BOF prohibited directed state-waters sablefish fisheries in the Kodiak and Chignik areas in 2002 and in the Eastern District of South Alaska Peninsula Area in 2003. Since that time, sablefish may only be retained with certain restrictions as bycatch to other commercial groundfish fisheries. Sablefish bycatch is managed by NMFS under federal rules which are adopted inside state waters by ADF&G through the global groundfish EO. The 2011 sablefish bycatch harvest in state waters of the Kodiak, Chignik, and South Peninsula Eastern District totaled 11,253 pounds (Table 1).

LINGCOD

Commercial fishing regulations in the Kodiak and Chignik areas prohibit retention of lingcod prior to July 1 and require all retained lingcod to be a minimum of 35 inches in total length. These regulations prevent commercial exploitation during nest-guarding and ensure only mature fish are harvested. The South Alaska Peninsula Area is believed to be the western boundary of lingcod distribution range (Mecklenburg et al. 2002), therefore, seasonal retention and size limit regulations are not in place.

All legal commercial gear types may be used to harvest lingcod, although registration is required for vessels intending to target lingcod. Historically, harvests of lingcod in the Westward Region have generally remained below 100,000 pounds (Table 25) and most harvest occurs as bycatch in other commercial groundfish fisheries. During 2008, harvest increased considerably to 521,257 pounds largely due to increased retention by trawl vessels. In response, ADF&G reduced the allowable lingcod bycatch rate from 20% to 5% prior to the start of the 2009 season. Harvest

declined to 97,281 pounds in 2009 and 67,429 pounds in 2010, however increased to 122,454 pounds in 2011 (Table 25).

PARALLEL WALLEYE POLLOCK FISHERIES

State waters are opened for parallel walleye pollock seasons concurrent with federal seasons managed by NMFS. Annually, harvest quotas are released in four openings designated A, B, C, and D seasons (Table 26). In some areas more than one opening occurred within a season to ensure the full seasonal allocation was harvested. Walleye pollock were primarily harvested by vessels using pelagic trawl gear.

Harvest of walleye pollock in 2011 totaled 122.0 million pounds in the CGOA and 45.0 million pounds in the WGOA (Table 27). Approximately 10% of the total 2011 CGOA walleye pollock harvest and 53% of the total 2011 WGOA harvest occurred in state waters (Table 27).

NON-PELAGIC TRAWL CLOSURES

Non-pelagic trawl closures around Kodiak Island and along the Alaska Peninsula began in 1986. Additional closures occurred in 1994 and 1995 when the BOF opened state waters to non-pelagic trawling near Castle Rock and Sanak Island in the South Alaska Peninsula Area (Figure 9).

Non-pelagic trawling was considered again during 1999 in response to public proposals that sought to close all state waters within the Kodiak and Chignik areas to non-pelagic trawling. The BOF adopted the proposals with the exception of an area along the west side of Kodiak Island, which remains open on a seasonal basis (Figure 10). Seasonal openings were designed to allow non-pelagic trawl vessels access to flatfish resources during parallel fisheries. The remainder of state-waters within the Kodiak and Chignik areas were closed to non-pelagic trawl gear.

In response to concern over incidental king salmon harvest in trawl fisheries, the BOF adopted a proposal in 2011 closing a portion the west side of Kodiak Island to trawl gear approximately 3 mi on either side of the mouth of Karluk River (Figure 11).

REFERENCES CITED

- Gaichas, S., M. Ruccio, D. Stevenson, and R. Swanson. 2003. Stock Assessment and Fishery Evaluation of Skate Species (*Rajidae*) in the Gulf of Alaska. [In] Draft Environmental Assessment for the Total Allowable Catch Specifications for the Year 2004 Alaska Groundfish Fisheries. National Marine Fisheries Service. Alaska Regional Office, Juneau.
- Mecklenburg, C. W., T. A. Mecklenburg and L. K. Thorsteinson. 2002. Fishes of Alaska. American Fisheries Society. Bethesda, Maryland.
- MSFCMA. 2007. Magnuson-Stevens Fishery Conservation and Management Act as Amended through January 12, 2007. U. S. Department of Commerce, NOAA Technical Memorandum.
- National Marine Fisheries Service. 2000. Biological Opinion Section 7 Consultation on the Groundfish Management Plans, 1999 and 2002. NMFS, Office of Protected Resources, NMFS, Silver Spring, Maryland.
- National Marine Fisheries Service. 2001a. Endangered Species Act - Section 7 Consultation Biological Opinion and Incidental Take Statement. NMFS, Alaska Region Office of Protected Resources, Juneau, Alaska.
- National Marine Fisheries Service. 2001b. Steller sea lion protection measures - Final Environmental Impact Statement. NOAA - National Marine Fisheries Service, Alaska Region, Juneau, Alaska.
- Shimada, A. M. and D. K. Kimura. 1994. Seasonal movements of Pacific cod (*Gadus macrocephalus*) in the eastern Bering Sea and adjacent waters based on tag-recapture data. U.S. National Marine Fisheries Service, Fishery Bulletin 92:800-816.
- Thompson, G. G., J. N. Ianelli, and M. E. Wilkins. 2010. Assessment of the Pacific cod stock in the Gulf of Alaska. [In] Plan Team for the Groundfish Fisheries of the Gulf of Alaska (compiler), Stock Assessment and Fishery Evaluation Report for the Groundfish Resources of the Gulf of Alaska. North Pacific Fishery Management Council, Anchorage.

TABLES AND FIGURES

Table 1.—Top 30 species removals, by total weight, as reported on groundfish fish tickets from state waters of Kodiak, Chignik, and South Alaska Peninsula areas, 2011.

Species	Kodiak	Chignik	South Alaska Peninsula	Total Weight (Pounds)
Pacific Cod	29,090,132	10,704,178	35,938,087	75,732,397
Walleye Pollock	11,665,412	131,201	23,645,621	35,442,233
Pacific Halibut	1,764,818	677,637	1,657,749	4,100,205
Arrowtooth Flounder	645,574	395	445,659	1,091,628
Octopus, unidentified	125,375	18,443	195,191	339,009
Big Skate	331,359	935	2,533	334,827
Flathead Sole	28,689	940	123,693	153,322
Rock Sole	14,731	0	131,058	145,789
Black Rockfish	125,391	Confidential	Confidential	125,391
Longnose Skate	98,472	588	1,166	100,225
Dusky Rockfish	26,784	1,085	457	28,325
Pacific Herring	24,157	0	153	24,311
Rex Sole	17,455	0	4,061	21,516
Capelin Smelt	17,663	0	644	18,307
Yelloweye Rockfish	8,309	5,023	1,895	15,226
Eulachon Smelt	11,111	0	595	11,706
Sablefish	7,658	0	3,596	11,253
Lumpsucker	1,189	909	8,558	10,657
Lingcod	7,893	2,428	0	10,321
Dark Rockfish	9,784	181	29	9,994
Jellyfish	0	0	8,834	8,834
Squid	7,619	0	707	8,326
Northern Rockfish	7,211	0	6	7,217
Chinook Salmon	2,416	60	4,713	7,189
Spiny Dogfish Shark	4,930	0	2,225	7,155
Skate, unidentified	3,481	0	2,081	5,562
Rougheye Rockfish	1,845	2,091	1,421	5,357
Pacific Ocean Perch	3,287	0	812	4,100
Chum Salmon	61	0	3,912	3,972
Dover Sole	2,898	0	0	2,898

Notes: Weights reported in whole fish pounds. Discards at sea excluded.

Data are confidential in cases where fewer than three vessels or processors participated.

Table 2.—Groundfish emergency orders issued for the Kodiak, Chignik, and South Alaska Peninsula areas, 2011.

Emergency Order	Effective Date	Explanation
4-GF-01-11	January 1, 2011	Established parallel commercial groundfish fishing seasons and bycatch limits in the Kodiak, Chignik, and South Alaska Peninsula, Bering Sea-Aleutian Islands, and Chukchi-Beaufort areas.
4-GF-03-11	February 5, 2011	Opened Kodiak Area state-waters Pacific cod season.
4-GF-04-11	February 23, 2011	Opened South Alaska Peninsula Area state-waters Pacific cod season.
4-GF-05-11	February 18, 2011	Closed Kodiak Area state-waters Pacific cod season to pot gear.
4-GF-06-11	February 23, 2011	Delayed South Alaska Peninsula Area state-waters Pacific cod season for 24 hours.
4-GF-07-11	February 24, 2011	Delayed South Alaska Peninsula Area state-waters Pacific cod season for 24 hours.
4-GF-08-11	March 11, 2011	Closed South Alaska Peninsula Area state-waters Pacific cod season to pot gear.
4-GF-09-11	March 17, 2011	Closed Chignik Area state-waters Pacific cod season to pot gear.
4-GF-11-11	March 25, 2011	Closed the directed black rockfish fishery in the Kodiak Area Northeast District.
4-GF-13-11	April 14, 2011	Closed Kodiak Area state-waters Pacific cod season to jig gear.
4-GF-14-11	April 26, 2011	Closed South Alaska Peninsula Area state-waters Pacific cod season to jig gear.
4-GF-15-11	May 10, 2011	Closed the black rockfish fishery in the Kodiak Area Afognak District.
4-GF-16-11	May 31, 2011	Closed the black rockfish fishery in the Kodiak Area Eastside District.
4-GF-18-11	August 15, 2011	Increased trip limit for black rockfish in the Southwest, Westside, and Mainland districts of the Kodiak Area.
4-GF-19-11	August 15, 2011	Removed GHL allocation between pot and jig gear in the Chignik Area state-waters Pacific cod fishery.
4-GF-20-11	July 13, 2011	Increased lingcod bycatch rate from 5 percent to 20 percent in the Kodiak Area jig fishery.
4-GF-24-11	October 25, 2011	Closed the black rockfish fishery in the Kodiak Area Southeast District.
4-GF-25-11	September 1, 2011	Increased black rockfish bycatch limit in the Southwest, Westside, and Mainland districts of the Kodiak Area.
4-GF-26-11	September 1, 2011	Closed Chignik Area state-waters Pacific cod season to pot and jig gear.
4-GF-27-11	October 9, 2011	Reopened Chignik Area state-waters Pacific cod season to pot and jig gear.

Notes: Omitted emergency orders (e.g., 4-GF-2-11) enacted for management areas outside of Kodiak, Chignik, and South Alaska Peninsula.
GHL = guideline harvest level.

Table 3.—Pacific cod harvest, in millions of pounds, from Central and Western Gulf of Alaska Management areas, 1990–2011.

NMFS Area	Year	Federal Waters		State Waters		Total	Discards at	
		Harvest	% of Total	Harvest	% of Total	Harvest	ABC	Sea
Central GOA	1990	79.79	87	11.82	13	91.61	130.95	0.58
	1991	81.24	81	19.55	19	100.79	106.48	0.51
	1992	73.12	82	16.53	18	89.65	85.40	0.46
	1993	60.31	84	11.60	16	71.91	77.50	0.66
	1994	50.28	80	12.89	20	63.16	68.89	0.81
	1995	72.84	77	21.76	23	94.60	100.69	0.79
	1996	71.93	81	16.76	19	88.70	94.58	3.22
	1997	76.64	76	24.59	24	101.24	113.20	1.83
	1998	72.63	74	24.90	26	97.53	108.20	0.39
	1999	71.03	68	34.08	32	105.11	117.22	0.17
	2000	56.32	72	21.71	28	78.03	96.01	0.45
	2001	50.00	78	14.08	22	64.08	85.20	0.80
	2002	42.44	70	18.18	30	60.62	69.84	1.11
	2003	41.97	68	20.14	32	62.11	64.02	0.99
	2004	47.26	66	24.19	34	71.45	78.93	0.49
	2005	38.94	62	24.00	38	62.94	73.01	0.24
	2006	37.21	63	22.29	37	59.50	83.49	0.14
	2007	43.53	65	23.02	35	66.55	83.49	0.41
	2008	45.21	64	25.84	36	71.05	83.56	1.16
	2009	35.20	60	23.70	40	58.80	69.50	1.16
	2010	63.34	64	35.74	36	99.08	108.10	0.94
	2011	66.79	60	44.94	40	111.73	118.64	0.48
Western GOA	1990	72.20	85	13.13	15	85.33	65.48	0.74
	1991	71.95	94	4.29	6	76.24	56.67	0.32
	1992	59.73	82	13.15	18	72.87	51.80	0.74
	1993	37.90	95	1.88	5	39.78	41.25	0.18
	1994	24.88	77	7.32	23	32.20	36.67	0.15
	1995	35.68	80	8.99	20	44.67	44.24	0.20
	1996	35.28	73	12.92	27	48.20	41.56	0.29
	1997	47.34	71	19.55	29	66.88	62.89	0.37
	1998	39.98	69	18.06	31	58.04	60.11	0.08
	1999	39.73	65	21.16	35	60.90	65.12	0.04
	2000	33.73	55	27.90	45	61.63	60.64	0.07
	2001	23.02	54	19.97	46	42.99	53.81	0.03
	2002	26.32	55	21.22	45	47.54	49.52	0.07
	2003	17.55	40	25.93	60	43.48	45.40	0.07
	2004	17.11	38	28.16	62	45.27	49.85	0.05
	2005	16.49	43	22.29	57	38.77	46.11	0.05
	2006	11.23	29	27.74	71	38.96	59.21	0.07
	2007	15.83	42	22.31	58	38.14	59.21	0.05
	2008	21.58	50	21.47	50	43.05	57.17	0.06
	2009	15.40	40	23.30	60	38.60	47.50	0.10
	2010	26.00	44	33.16	56	59.16	61.00	0.36
	2011	28.42	44	36.63	56	65.05	66.98	0.10

Notes: Weights are reported in whole fish pounds. Discards at sea are excluded from all columns except the Discards at Sea column. State and federal harvests may not add to total due to rounding.

GOA = Gulf of Alaska, ABC = Acceptable Biological Catch, NMFS = National Marine Fisheries Service.

Table 4.—Kodiak Area Pacific cod harvest during parallel Pacific cod seasons, by gear type, 1997–2011.

Year	Gear Type				Total
	Pot	Longline	Trawl	Jig	
1997	8,500,650	1,894,214	857,688	527	11,253,078
1998	4,998,323	2,166,232	799,570	27,246	7,991,371
1999	8,176,521	2,579,782	1,226,554	27,963	12,010,819
2000	4,459,508	3,576,747	247,475	79,365	8,363,095
2001	2,800,868	2,283,509	213,454	22,414	5,320,245
2002	2,324,281	1,308,531	270,407	5,926	3,909,144
2003	3,104,572	2,699,156	428,503	16,045	6,248,277
2004	2,329,223	3,856,746	498,690	244,600	6,929,260
2005	3,890,960	3,507,804	366,751	298,326	8,063,841
2006	4,429,520	5,422,239	398,582	190,037	10,440,378
2007	5,018,241	3,409,233	150,583	68,583	8,646,640
2008	3,317,365	1,950,257	305,023	38,267	5,610,912
2009	2,741,107	2,907,995	139,002	70,971	5,859,075
2010	5,142,268	3,316,265	115,026	232,643	8,806,202
2011	7,804,342	4,746,357	188,864	1,081,094	13,820,657

Note: Weights are reported in whole fish pounds. Discards at sea are excluded.

Table 5.–Chignik Area Pacific cod harvest during parallel Pacific cod seasons by gear type, 1997–2011.

Year	Gear Type				Total
	Pot	Longline	Trawl	Jig	
1997	Confidential - All Gear Types				555,718
1998	Confidential - All Gear Types				409,669
1999	Confidential - All Gear Types				852,408
2000	Confidential - All Gear Types				426,788
2001	Confidential - All Gear Types				135,999
2002	Confidential - All Gear Types				264,836
2003	Confidential - All Gear Types				211,531
2004	Confidential - All Gear Types				157,008
2005	Confidential - All Gear Types				62,891
2006	Confidential - All Gear Types				62,324
2007	Confidential - All Gear Types				38,500
2008	Confidential - All Gear Types				175,908
2009	239,584	45,136	0	0	284,720
2010	564,567	Confidential	0	0	564,567 ^a
2011	258,963	70,197	0	0	329,160

Note: Weights are in reported whole fish pounds. Discards at sea are excluded.
Data are confidential in cases where fewer than three vessels participated.

^a Total excludes confidential harvest.

Table 6.—South Alaska Peninsula Area Pacific cod harvest during parallel Pacific cod seasons by gear type, 1997–2011.

Year	Gear Type				Total ^a
	Pot	Longline	Trawl	Jig	
1997	1,998,742	21,268	6,275,699	Confidential	8,295,709
1998	3,974,919	511,388	3,536,321	Confidential	8,022,628
1999	2,841,596	Confidential	5,145,488	0	7,987,084
2000	5,699,112	219,195	6,342,383	Confidential	12,260,690
2001	3,272,010	44,507	2,289,085	339,940	5,945,543
2002	6,051,920	Confidential	643,287	398,623	7,093,830
2003	12,966,344	46,165	160,705	92,528	13,265,743
2004	12,882,834	15,069	919,244	397,702	14,214,849
2005	6,128,240	536,983	2,826,290	100,691	9,595,204
2006	9,319,648	216,514	6,252,940	Confidential	15,789,102
2007	6,370,559	399,170	2,462,186	Confidential	9,235,215
2008	6,387,463	555,457	744,439	114,599	7,846,360
2009	8,054,281	2,280,326	333,954	417,515	11,086,076
2010	13,229,552	1,559,375	1,383,756	756,920	16,929,603
2011	17,487,472	324,590	310,064	496,377	18,618,503

Note: Weights are reported in whole fish pounds. Discards at sea are excluded. Data are confidential in cases where fewer than three vessels participated.

^a Totals exclude confidential harvest.

Table 7.—Regulatory development of the state-waters Pacific cod seasons in the Kodiak, Chignik, and South Alaska Peninsula areas.

YEAR	REGULATION
1996	<ul style="list-style-type: none"> • Alaska Board of Fisheries adopts state-waters Pacific cod management plans for Kodiak, Chignik, and South Alaska Peninsula (SAP) areas. • All areas established as exclusive registration. • Gear restricted to mechanical jigging machines (5 machines), hand troll (5 lines), or pots (60 pots). • Kodiak and SAP open 14 days after federal closure; Chignik opens April 15. • Vessel size restricted to 58' in Chignik and SAP. • Jig/pot allocation (50:50) in Kodiak; no allocation by gear type in Chignik or SAP. • Gear allocation rollover September 1 in Kodiak. Gear limits and exclusive registration may be removed October 31 in all areas; vessel size limits may be removed October 31 for Chignik and SAP.
1997	<ul style="list-style-type: none"> • Prosecution of the first state-waters Pacific cod fishery in Kodiak, Chignik and SAP areas.
1998	<ul style="list-style-type: none"> • Kodiak and SAP change opening date to 7 days after federal closure • Chignik opening date changed to April 1 • SAP adopts gear allocation rollover September 1. • SAP caps pot harvest at 85% of the guideline harvest level (GHL).
1999	<ul style="list-style-type: none"> • Chignik opening date changed to April 15. • Chignik GHL allocation (jig/pot) established at 15% jig and 85% pot • Chignik adopts gear allocation rollover on August 15. • Chignik Area changed to superexclusive registration. • Kodiak adopts large vessel (> 58') cap of 25% of GHL prior to September 1.
2001	<ul style="list-style-type: none"> • State regulation adopted recognizing Steller sea lion haulouts during parallel Pacific cod, walleye pollock and Atka mackerel seasons.
2002	<ul style="list-style-type: none"> • Vessel monitoring system (VMS) rules implemented during parallel Pacific cod, walleye pollock, and Atka mackerel seasons. • Pot storage requirement liberalized in Kodiak and Chignik areas for transition between parallel and state-waters seasons. • Chignik opening date changed to March 1.
2004	<ul style="list-style-type: none"> • Pot storage liberalized in SAP Area for transition between parallel and state-waters seasons.
2005	<ul style="list-style-type: none"> • Chignik allocation (jig/pot) allocation changed in Chignik (10:90).
2007	<ul style="list-style-type: none"> • SAP adopts 24-hour weather delay prior to fishery opening. • SAP mandatory inseason catch reporting by vessels. • SAP Area registration requirements changed, prohibiting fishing in another groundfish fishery outside of SAP and a portion of the Chignik Area.
2010	<ul style="list-style-type: none"> • SAP adopts 58' vessel size limit for parallel Pacific cod fishery
2011	<ul style="list-style-type: none"> • Chignik adopts 58' vessel size limit for parallel Pacific cod fishery • Coordinate Kodiak, Chignik, SAP state-waters Pacific cod management plans to accommodate federal Pacific cod gear sector allocations.

Table 8.—Harvest, effort, and value from Kodiak, Chignik, and South Alaska Peninsula areas state-waters Pacific cod seasons, 2000–2011.

	Year	Vessels	Landings	GHL ^a	Pounds Harvested ^b	Price Per Pound ^c	Fishery Value ^d
Kodiak Area							
	2000	204	1,707	12.0	8,562,816	\$0.39	\$3,335,844
	2001	103	669	10.6	4,843,741	\$0.34	\$1,638,642
	2002	82	552	8.7	8,825,851	\$0.29	\$2,556,887
	2003	128	837	8.0	8,154,867	\$0.33	\$2,685,922
	2004	156	1,122	9.9	10,033,889	\$0.31	\$3,102,824
	2005	158	1,011	9.1	8,548,163	\$0.32	\$2,734,882
	2006	113	646	10.4	6,330,518	\$0.42	\$2,657,285
	2007	95	643	10.4	6,406,965	\$0.51	\$3,278,695
	2008	111	988	10.4	10,548,875	\$0.59	\$6,217,710
	2009	130	971	8.7	8,591,477	\$0.32	\$2,233,575
	2010	114	880	13.5	13,566,306	\$0.28	\$3,796,186
	2011	161	1,165	14.8	15,267,869	\$0.35	\$4,116,248
Chignik Area							
	2000	25	163	6.7	1,794,759	\$0.30	\$538,414
	2001	26	179	6.0	2,648,655	\$0.26	\$688,645
	2002	25	199	4.9	4,227,547	\$0.20	\$832,946
	2003	28	257	4.5	4,467,571	\$0.27	\$1,206,244
	2004	28	297	5.8	5,750,461	\$0.23	\$1,322,156
	2005	22	248	6.4	5,787,467	\$0.25	\$1,446,687
	2006	12	202	7.3	3,439,521	\$0.34	\$1,169,437
	2007	16	242	7.3	5,699,461	\$0.45	\$2,564,576
	2008	23	262	7.3	6,838,934	\$0.56	\$3,829,803
	2009	12	123	6.1	5,681,230	\$0.24	\$1,363,034
	2010	16	160	9.5	9,153,719	\$0.24	\$2,195,007
	2011	32	244	10.4	10,346,856	\$0.32	\$3,115,384
South Alaska Peninsula Area							
	2000	90	650	15.1	15,044,104	\$0.30	\$4,476,218
	2001	121	727	13.4	13,464,020	\$0.25	\$3,362,729
	2002	107	598	12.4	12,716,258	\$0.22	\$2,792,697
	2003	92	604	11.4	11,560,663	\$0.27	\$3,117,330
	2004	88	595	12.5	12,514,240	\$0.23	\$2,869,261
	2005	73	528	11.5	11,436,172	\$0.25	\$2,846,795
	2006	54	386	14.8	11,739,736	\$0.36	\$4,215,888
	2007	60	465	14.8	12,678,151	\$0.47	\$5,940,742
	2008	97	700	14.3	13,302,050	\$0.57	\$7,547,258
	2009	72	514	11.9	11,594,124	\$0.26	\$3,011,443
	2010	69	534	15.3	15,288,266	\$0.25	\$3,877,227
	2011	82	551	16.7	16,806,305	\$0.30	\$4,905,994

-continued-

Table 8.—Page 2 of 2.

	Year	Vessels	Landings	GHL ^a	Pounds Harvested ^b	Price Per Pound ^c	Fishery Value ^d
Total							
	2000	314	2,519	33.8	25,401,678	\$0.33	\$8,350,476
	2001	246	1,574	30.0	20,956,415	\$0.27	\$5,690,016
	2002	209	1,348	26.0	25,769,656	\$0.23	\$6,182,531
	2003	248	1,698	23.9	24,183,101	\$0.28	\$7,009,496
	2004	272	2,014	28.2	28,298,589	\$0.26	\$7,294,241
	2005	253	1,787	27.0	25,771,801	\$0.27	\$7,028,363
	2006	180	1,234	32.5	21,509,775	\$0.37	\$8,042,610
	2007	232	1,348	32.5	24,817,369	\$0.47	\$11,784,013
	2008	230	1,939	32.0	30,671,115	\$0.57	\$17,594,770
	2009	213	1,608	26.7	25,866,831	\$0.27	\$6,608,052
	2010	199	1,574	38.3	38,008,291	\$0.26	\$9,868,420
	2011	275	1,959	41.9	42,421,030	\$0.32	\$12,137,626

Note: Weights are in whole fish pounds. Discards at sea are excluded. Totals by area may not match number of vessels by gear type in Tables 10, 12, and 16 because a vessel may have used more than one gear type.

^a GHL = guideline harvest level (millions of pounds).

^b Pounds harvested for Chignik exclude jig harvest in 2006 and 2008 due to confidentiality; jig vessel numbers and jig landing data are also excluded for these years.

^c Price per pound calculated from whole pounds sold excluding bait and meal.

^d Value calculated by multiplying pounds of sold product (not pounds harvested) by price per pound.

Table 9.-Kodiak Area state-waters Pacific cod season openings, 1997–2011.

	Pot Gear	Jig Gear
1997	<i>Fishery Dates:</i>	
	April 4 - May 4	April 4 - December 31
	September 1 - September 30	October 28- December 31
	October 28 - December 31	
	<i>Management Actions:</i>	
	September 1 - reopened to pot gear	
	October 31 allocation rollover - gear limits, exclusive registration area lifted.	
1998	<i>Fishery Dates:</i>	
	March 17 - April 27	March 17 - December 31
	September 1 - December 31	
	<i>Management Actions:</i>	
	September 1 - reopened to pot gear	
	October 31 vessel size limit - gear limits, exclusive registration area lifted.	
1999	<i>Fishery Dates:</i>	
	March 21 - April 29	March 21 - August 31
	October 5 - December 31	October 6 - December 31
	<i>Management Actions:</i>	
	October 6 - reopen to pot gear. (following CGOA opening)	
	October 31 - gear limits lifted, exclusive registration area lifted.	
2000	<i>Fishery Dates:</i>	
	March 11 - December 31	March 11 - December 31
	<i>Management Actions:</i>	
	October 31 - limits on pots, jigs, and vessel size removed, exclusive registration area lifted.	
2001	<i>Fishery Dates:</i>	
	March 11 - December 31	March 11 - December 31
	<i>Management Actions:</i>	
	September 1 - reopen to pot gear.	
	October 31 - limits on pots, jigs, and vessel size removed, exclusive registration area lifted.	
2002	<i>Fishery Dates:</i>	
	March 16 - May 4	March 16 - December 31
	September 1 - December 31	
	<i>Management Actions:</i>	
	September 1 - reopen to pot gear.	
	October 31 - limits on pots, jigs, and vessel size removed, exclusive registration area lifted.	
2003	<i>Fishery Dates:</i>	
	February 16 - March 2	February 16 - May 9
	<i>Management Actions:</i>	
	Fishery closed when GHF allocations were attained.	
2004	<i>Fishery Dates:</i>	
	February 7 - February 22	February 7 - April 20
	<i>Management Actions:</i>	
	Fishery closed when GHF allocations were attained.	

-continued-

Table 9.–Page 2 of 2.

	Pot Gear	Jig Gear
2005	<i>Fishery Dates:</i> February 2 - February 13 <i>Management Actions:</i> Fishery closed when GHL allocations were attained.	February 2 - April 21
2006	<i>Fishery Dates:</i> March 7 - March 29 <i>Management Actions:</i> Pot gear closed when GHL was attained. Jig season closed on 9/1 for parallel season (B-season).	March 7 - September 1
2007	<i>Fishery Dates:</i> March 6 - April 8 <i>Management Actions:</i> Pot gear closed when GHL was attained. Jig season closed on 9/1 for parallel season (B-season).	March 6 - September 1
2008	<i>Fishery Dates:</i> February 27 - March 26 October 5 - November 22 <i>Management Actions:</i> Pot gear closed when GHL was attained. Jig season closed on 9/1 for parallel season (B-season). October 5 - reopen to pot and jig gear (following federal CGOA closure).	February 27 - September 1 October 5 - November 22
2009	<i>Fishery Dates:</i> February 3 - February 18 <i>Management Actions:</i> Pot gear closed when GHL was attained. Jig season closed on 9/1 for parallel season (B-season). October 3 - reopen to jig gear (following federal CGOA closure).	February 3 - September 1 October 3 - December 31
2010	<i>Fishery Dates:</i> February 7 - February 23 <i>Management Actions:</i> Pot gear closed when GHL was attained. Jig season closed when GHL was attained.	February 7 - June 5
2011	<i>Fishery Dates:</i> February 5 - February 18 <i>Management Actions:</i> Pot gear closed when GHL was attained. Jig season closed when GHL was attained.	February 5 - April 14

Note: GHL = guideline harvest level.
CGOA = Central Gulf of Alaska.

Table 10.—Kodiak Area state-waters Pacific cod harvest and effort by gear type, 1997–2011.

Year	Gear	GHL ^a	Vessels	Landings	Pounds	Price Per Pound ^b
1997	Jig	4.25	73	482	1,978,772	\$0.23
	Pot	4.25	40	232	5,580,372	\$0.22
1998	Jig	4.05	91	661	2,112,817	\$0.23
	Pot	4.05	49	310	6,070,140	\$0.22
1999 ^c	Jig	5.85	118	793	2,294,837	\$0.38
	Pot	5.85	79	462	8,400,138	\$0.32
2000	Jig	6.00	143	1,226	2,814,481	\$0.40
	Pot	6.00	69	481	5,748,334	\$0.39
2001	Jig	5.30	69	433	1,252,692	\$0.36
	Pot	5.30	34	236	3,591,049	\$0.33
2002	Jig	4.35	51	340	1,389,838	\$0.28
	Pot	4.35	33	212	7,436,013	\$0.29
2003	Jig	4.00	102	688	3,195,605	\$0.35
	Pot	4.00	42	149	4,959,262	\$0.32
2004	Jig	4.95	124	961	4,210,284	\$0.34
	Pot	4.95	47	161	5,823,605	\$0.29
2005	Jig	4.56	122	849	4,570,327	\$0.33
	Pot	4.56	51	162	3,977,835	\$0.30
2006	Jig	5.21	79	477	1,446,881	\$0.43
	Pot	5.21	41	169	4,883,637	\$0.41
2007	Jig	5.21	63	457	1,249,753	\$0.52
	Pot	5.21	33	182	5,157,212	\$0.50
2008	Jig	5.22	76	647	2,042,082 ^d	\$0.61
	Pot	5.22	37	341	8,506,792 ^d	\$0.59
2009	Jig	4.35	94	833	4,450,423	\$0.32
	Pot	4.35	38	138	4,141,054	\$0.32
2010	Jig	6.75	81	707	6,504,733	\$0.30
	Pot	6.75	36	173	7,061,573	\$0.25
2011	Jig	7.41	132	975	7,135,212	\$0.35
	Pot	7.41	46	190	8,132,657	\$0.35

Note: Weights are reported in whole fish pounds. Discards at sea are excluded.

^a GHL = guideline harvest level (millions of pounds).

^b Price per pound calculated from whole fish pounds sold excluding bait and meal.

^c Beginning in 1999, vessels > 58' using pot gear were capped at 25% of the total GHL.

^d Pot harvest prior to the allocation rollover (September 1) was 5.42 million pounds. Jig harvest prior to the allocation rollover was 1.98 million pounds.

Table 11.—Pacific cod harvest from the Kodiak Area state-waters season by statistical area, 2011.

Statistical Area	Pounds	Vessels	Landings ^a
515801	37,424	5	7
525701	2,088,138	58	138
525703	1,065,943	31	59
525731	779,892	48	125
525733	2,397,761	103	441
525802	491,666	7	12
525803	233,583	5	8
525805	383,782	18	45
525806	1,220,488	40	97
525834	526,331	6	11
535631	837,107	20	42
535634	442,026	8	12
535703	331,861	11	31
535705	874,726	7	21
535706	28,460	4	6
535732	1,083,858	40	106
535733	87,851	3	3
535734	133,141	10	14
535803	708,758	21	39
545733	385,136	3	7
545734	189,746	6	11
Other ^b	940,190	8	19
Total	15,267,869		

Note: Weights are reported in whole fish pounds. Discards at sea are excluded.

^a Some landings involve multiple statistical areas.

^b A total of seven statistical areas were combined due to confidentiality.

Table 12.–Chignik Area state-waters Pacific cod season openings, 1997–2011.

	Pot Gear	Jig Gear
1997	<i>Fishery Dates:</i> April 15 - June 15 August 1 - September 30 October 28 - December 31 <i>Management Actions:</i> October 31 allocation rollover - vessel size limit, gear limits, exclusive registration area lifted.	
1998	<i>Fishery Dates:</i> April 1 - April 26 <i>Management Actions:</i> May 20 reopened to jig gear. October 31 allocation rollover - gear limits lifted.	
1999	<i>Fishery Dates:</i> April 15 - September 1 October 5 - December 31 <i>Management Actions:</i> October 31 allocation rollover - limits on number of pots, jigs, and vessel size removed.	
2000	<i>Fishery Dates:</i> April 15 - December 31 <i>Management Actions:</i> October 31 - limits on number of pots, jigs, and vessel size removed.	
2001	<i>Fishery Dates:</i> March 11 - December 31 <i>Management Actions:</i> October 31 - limits on number of pots, jigs, and vessel size removed.	
2002	<i>Fishery Dates:</i> March 1 - December 31 <i>Management Actions:</i> October 31 - limits on number of pots, jigs, and vessel size removed.	
2003	<i>Fishery Dates:</i> March 1 - April 11 <i>Management Actions:</i> Fishery closed when GHL allocations were attained.	
2004	<i>Fishery Dates:</i> March 1 - May 13 <i>Management Actions:</i> August 15 jig GHL rollover - jig quota harvestable by either jig or pot gear. October 31 - limits on number of pots, jigs, and vessel size removed.	
2005	<i>Fishery Dates:</i> March 1 - May 10 <i>Management Actions:</i> August 15 jig GHL rollover - jig quota harvestable by either jig or pot gear October 31 - limits on number of pots, jigs, and vessel size removed.	

-continued-

Table 12.–Page 2 of 2.

	Pot Gear	Jig Gear
2006	<i>Fishery Dates:</i> March 1 - September 1 <i>Management Actions:</i> August 15 jig GHL rollover - jig quota harvestable by either jig or pot gear September 1 - state-waters season (jig and pot) closed and parallel season opened.	March 1 - September 1
2007	<i>Fishery Dates:</i> March 1 - September 1 <i>Management Actions:</i> August 15 jig GHL rollover - jig quota harvestable by either jig or pot gear. September 1 - state-waters season (jig and pot) closed and parallel season opened.	March 1 - September 1
2008	<i>Fishery Dates:</i> March 1 - September 1 October 5 - December 31 <i>Management Actions:</i> August 15 jig GHL rollover - jig quota harvestable by either jig or pot gear. September 1 - state-waters season (jig and pot) closed and parallel season opened. October 5 - reopen to pot and jig gear after federal CGOA closure. November 4 - Vessel size limits and gear limits removed.	March 1 - September 1 October 5 - December 31
2009	<i>Fishery Dates:</i> March 1 - April 8 October 3 - December 31 <i>Management Actions:</i> August 15 jig GHL rollover - jig quota harvestable by either jig or pot gear. September 1 - state-waters season (jig and pot) closed and parallel season opened. October 3 - reopen to pot and jig gear after federal CGOA closure.	March 1 - September 1 October 3 - December 31
2010	<i>Fishery Dates:</i> March 1 - April 6 September 13 - December 31 <i>Management Actions:</i> August 15 - jig GHL rollover; jig quota harvestable by either jig or pot gear. September 1 - state-waters season (jig and pot) closed and parallel season opened. September 13 - reopen to pot and jig gear after federal CGOA closure.	March 1 - September 1 September 13 - December 31
2011	<i>Fishery Dates:</i> March 1 - March 17 October 9 - December 31 <i>Management Actions:</i> August 15 - jig GHL rollover; jig quota harvestable by either jig or pot gear. September 1 - state-waters season (jig and pot) closed and parallel season opened. October 9 - reopen to pot and jig gear after federal CGOA closure.	March 1 - September 1 October 9 - December 31

Note: GHL = guideline harvest level.
CGOA = Central Gulf of Alaska.

Table 13.—Pacific cod harvest from the Chignik Area state-waters season by statistical area, 2011.

Statistical Area	Pounds	Vessels	Landings ^a
565602	2,083,499	6	22
565633	1,945,565	5	44
575635	1,301,111	4	19
585531	2,560,379	10	54
585601	1,016,640	6	45
595531	514,633	14	51
Other ^b	925,030	6	19
Total	10,346,856		

Note: Weights are in whole fish pounds. Discards at sea are excluded.

^a Some landings involve multiple statistical areas.

^b Total of four statistical area combined due to confidentiality.

Table 14.—Chignik Area state-waters Pacific cod harvest and effort by gear type, 1997–2011.

Year	Gear	GHL ^a	Vessels	Landings	Pounds	Price Per Pound ^b
1997	Jig	2.95	4	14	35,002	\$0.18
	Pot	2.95	10	60	1,098,970	\$0.18
1998	Jig	2.85	11	59	167,283	\$0.18
	Pot	2.85	44	236	5,440,796	\$0.17
1999	Jig	4.10	11	56	218,408	\$0.32
	Pot	4.10	32	396	6,207,176	\$0.29
2000	Jig	1.01	5	12	38,453	\$0.35
	Pot	5.70	20	151	1,756,305	\$0.30
2001	Jig	0.90	13	55	277,411	\$0.27
	Pot	5.10	15	124	2,371,243	\$0.26
2002	Jig	0.74	14	60	324,227	\$0.20
	Pot	4.17	12	139	3,903,320	\$0.20
2003	Jig	0.68	16	106	433,067	\$0.28
	Pot	3.83	15	151	4,034,504	\$0.26
2004	Jig	1.10	14	53	141,697	\$0.24
	Pot	5.80	17	244	5,608,763	\$0.23
2005	Jig	0.63	8	42	136,872	\$0.24
	Pot	5.75	15	206	5,650,595	\$0.25
2006	Jig	0.73	1	2	Confidential	Confidential
	Pot	6.57	12	202	3,439,521	\$0.34
2007	Jig	0.73	0	0	0	ND
	Pot	6.57	16	242	5,700,861	\$0.45
2008	Jig	0.73	2	3	Confidential	Confidential
	Pot	6.58	23	262	6,838,934 ^c	\$0.56
2009	Jig	0.61	1	1	Confidential	Confidential
	Pot	5.47	11	122	5,679,678	\$0.24
2010	Jig	0.95	1	20	Confidential	Confidential
	Pot	8.51	16	160	9,153,719 ^d	\$0.24
2011	Jig	1.04	10	45	224,400	\$0.32
	Pot	9.34	23	199	10,122,456	\$0.32

Note: Weights are in whole fish pounds. Discards at sea are excluded. Data are confidential in cases where fewer than 3 vessels participated.

^a GHL = guideline harvest level (millions of pounds).

^b Price per pound calculated from whole fish pounds sold excluding bait and meal.

^c Pot harvest prior to the allocation rollover (August 15) was 6.69 million pounds.

^d Pot harvest prior to the allocation rollover (August 15) was 8.49 million pounds.

Table 15.–South Alaska Peninsula Area state-waters Pacific cod season openings, 1997–2011.

	Pot Gear	Jig Gear
1997	<i>Fishery Dates:</i> April 4 - December 22 <i>Management Actions:</i> October 31 allocation rollover - vessel size limit, gear limits, exclusive registration recinded.	April 4 - December 22
1998	<i>Fishery Dates:</i> March 10 - April 14 <i>Management Actions:</i> October 31 allocation rollover - No action; federal WGOA reopened October 9 - December 31.	March 10 - October 9
1999	<i>Fishery Dates:</i> March 15 - April 11 October 31- December 31 <i>Management Actions:</i> October 31 allocation rollover - Reopened to pot gear. November 10 - Gear limits recinded.	March 15 - December 31
2000	<i>Fishery Dates:</i> March 11 - April 8 <i>Management Actions:</i> Fishery closed when GHL allocations were attained.	March 11 - September 19
2001	<i>Fishery Dates:</i> March 6 - April 13 <i>Management Actions:</i> Fishery closed when GHL allocations were attained.	March 6 - June 12
2002	<i>Fishery Dates:</i> March 5 - March 24 <i>Management Actions:</i> Fishery closed when GHL allocations were attained.	March 5 - April 26
2003	<i>Fishery Dates:</i> February 24 - March 11 <i>Management Actions:</i> Fishery closed when GHL allocations were attained.	February 24 - April 22
2004	<i>Fishery Dates:</i> March 2 - March 24 <i>Management Actions:</i> Fishery closed when GHL allocations were attained.	March 2 - April 14
2005	<i>Fishery Dates:</i> March 3 - March 24 <i>Management Actions:</i> Pot fishery closed when GHL allocation was attained. Jig fishery closed August 31, parallel portion of WGOA reopened September 1 - December 31.	March 3 - August 31
2006	<i>Fishery Dates:</i> March 9 - March 29 April 4 - April 8 <i>Management Actions:</i> Pot fishery closed when GHL allocation was attained. Jig fishery closed August 31, parallel portion of WGOA reopened September 1 - December 31.	March 9 - September 1

-continued-

Table 15.–Page 2 of 2.

	Pot Gear	Jig Gear
2007	<i>Fishery Dates:</i> March 15 - April 17 <i>Management Actions:</i> Pot fishery closed when GHL allocation was attained. Jig fishery closed August 31, parallel portion of WGOA reopened September 1 - December 31.	March 15 - September 1
2008	<i>Fishery Dates:</i> March 7 - April 1 <i>Management Actions:</i> Pot fishery closed when GHL allocation was attained. Jig fishery closed August 31, parallel portion of WGOA reopened September 1 - December 31.	March 7 - September 1
2009	<i>Fishery Dates:</i> March 4 - April 4 <i>Management Actions:</i> Pot fishery closed when GHL allocation was attained. Jig fishery closed August 31, parallel portion of WGOA reopened September 1 - December 31.	March 4 - September 1
2010	<i>Fishery Dates:</i> March 5 - March 23 <i>Management Actions:</i> Pot fishery closed when GHL allocation was attained. Jig fishery closed when GHL was attained.	March 5 - May 27
2011	<i>Fishery Dates:</i> February 25 - March 11 <i>Management Actions:</i> Pot fishery closed when GHL allocation was attained. Jig fishery closed when GHL was attained.	February 25 - April 26

Note: GHL = guideline harvest level.
WGOA = Western Gulf of Alaska.

Table 16.—South Alaska Peninsula Area state-waters Pacific cod harvest and effort by gear type, 1997–2011.

Year	Gear	GHL ^a	Vessels	Landings	Pounds	Price Per Pound ^b
1997	Jig	4.70	45	178	349,468	\$0.17
	Pot	4.70	55	477	9,132,055	\$0.18
1998	Jig	1.35	28	124	437,708	\$0.16
	Pot	7.65	51	309	8,192,804	\$0.17
1999	Jig	1.95	27	166	706,952	\$0.29
	Pot	11.05	53	388	11,115,028	\$0.26
2000	Jig	2.28	28	145	757,953	\$0.28
	Pot	12.90	65	505	14,286,151	\$0.30
2001	Jig	2.01	69	417	3,402,427	\$0.24
	Pot	11.39	55	311	10,421,593	\$0.25
2002	Jig	1.86	66	322	2,046,686	\$0.24
	Pot	10.50	50	276	10,669,572	\$0.21
2003	Jig	1.80	65	413	3,633,007	\$0.27
	Pot	9.69	41	191	7,927,656	\$0.27
2004	Jig	1.90	51	317	1,671,461	\$0.24
	Pot	10.60	44	278	10,842,778	\$0.23
2005	Jig	1.73	39	261	1,229,832	\$0.25
	Pot	9.80	39	267	10,206,340	\$0.25
2006	Jig	2.22	12	36	99,552	\$0.36
	Pot	12.58	43	350	11,640,183	\$0.36
2007	Jig	2.22	14	59	254,178	\$0.47
	Pot	12.58	46	406	12,423,973	\$0.47
2008	Jig	2.14	51	299	1,382,268	\$0.57
	Pot	12.15	48	390	11,901,039	\$0.57
2009	Jig	1.78	26	185	1,093,382	\$0.23
	Pot	10.11	47	329	10,500,742	\$0.26
2010	Jig	2.29	34	294	2,315,081	\$0.25
	Pot	12.96	38	240	12,973,186	\$0.25
2011	Jig	2.51	42	271	2,443,043	\$0.28
	Pot	14.23	49	280	14,363,262	\$0.29

Note: Weights are reported in whole fish pounds. Discards at sea are excluded.

^a GHL = guideline harvest level (millions of pounds).

^b Price per pound calculated from whole fish pounds sold excluding bait and meal.

Table 17.—Pacific cod harvest from the South Alaska Peninsula Area state-waters season by statistical area, 2011.

Statistical Area	Pounds	Vessels	Landings ^a
595503	541,541	6	11
595533	502,451	3	10
605432	1,571,510	4	23
605501	669,280	19	35
605502	3,801,154	32	111
605504	1,663,115	35	148
605507	509,661	17	37
605531	325,697	4	10
605532	114,958	3	9
615508	445,259	9	34
625401	1,790,480	6	26
625431	618,697	5	24
625501	237,444	6	20
625502	40,814	4	5
635434	1,387,195	8	38
635436	678,807	3	13
Other ^b	1,908,241	11	37
Total	16,806,305		

Note: Weights are reported in whole fish pounds. Discards at sea are excluded.

^a Some landings include multiple statistical areas.

^b Total of eight statistical area combined due to confidentiality.

Table 18.—Kodiak Area black rockfish jig season harvest and effort, 1990–2011.

Year ^a	Vessels	Landings	Directed GHL ^b	Pounds	Price Per Pound ^c
1990	2	8	-	Confidential	Confidential
1991	55	317	-	782,133	\$0.25
1992	34	167	-	476,623	\$0.24
1993	14	58	-	105,244	\$0.24
1994	23	126	-	116,724	\$0.37
1995	33	183	-	311,455	\$0.44
1996	43	167	-	301,798	\$0.46
1997	51	297	-	221,167	\$0.38
1998	64	348	190,000	196,548	\$0.33
1999	70	300	185,000	128,008	\$0.42
2000	72	260	185,000	245,891	\$0.44
2001	36	168	185,000	213,629	\$0.50
2002	25	123	185,000	196,166	\$0.43
2003	33	90	185,000	84,237	\$0.36
2004	37	124	185,000	122,180	\$0.39
2005	23	85	175,000	116,726	\$0.40
2006	25	97	175,000	123,443	\$0.42
2007	21	96	175,000	135,386	\$0.41
2008	17	91	175,000	132,325	\$0.53
2009	18	90	175,000	122,249	\$0.41
2010	12	74	175,000	103,630	\$0.38
2011	21	67	175,000	124,900	\$0.39

Note: Weights are reported in whole fish pounds. Discards at sea are excluded. Data are confidential in 1990 because fewer than three vessels participated. GHLs were not established prior to 1998 because black rockfish were managed with the federal pelagic shelf rockfish complex.

^a From 1990 to 1997 black rockfish were federally managed. After 1997, the State of Alaska assumed management responsibility from 0–200 nmi. Only mechanical jig and hand jig are allowed for directed fishing.

^b GHL = guideline harvest level.

^c Price per pound calculated from whole fish pounds sold excluding bait and meal.

Table 19.—Chignik Area black rockfish jig season harvest and effort, 1990–2011.

Year ^a	Vessels	Landings	Directed GHL ^b	Pounds	Price Per Pound ^c
1990	0	0	-	0	na
1991	0	0	-	0	na
1992	0	0	-	0	na
1993	0	0	-	0	na
1994	0	0	-	0	na
1995	5	6	-	25,125	\$0.49
1996	11	25	-	201,825	\$0.36
1997	9	39	-	80,741	\$0.23
1998	10	30	100,000	87,712	\$0.28
1999	10	30	100,000	11,305	\$0.25
2000	7	14	100,000	95,572	\$0.43
2001	13	33	100,000	102,316	\$0.41
2002	7	15	100,000	81,015	\$0.41
2003	10	40	100,000	46,598	\$0.42
2004	6	26	100,000	99,122	\$0.27
2005	7	16	100,000	49,721	\$0.40
2006	2	4	100,000	Confidential	Confidential
2007	2	7	100,000	Confidential	Confidential
2008	1	4	100,000	Confidential	Confidential
2009	2	2	100,000	Confidential	Confidential
2010	1	5	100,000	Confidential	Confidential
2011	1	1	100,000	Confidential	Confidential

Note: Weights are reported in whole fish pounds. Discards at sea are excluded. Data are confidential in 1990 because fewer than three vessels participated. GHLs were not established prior to 1998 because black rockfish were managed with the federal pelagic shelf rockfish complex.

^a From 1990 to 1997 black rockfish were federally managed. After 1997, the State of Alaska assumed management responsibility from 0–200 nmi. Only mechanical jig and hand troll gear allowed for directed fishing.

^b GHL = guideline harvest level.

^c Price per pound calculated from whole fish pounds sold excluding bait and meal.

Table 20.—South Alaska Peninsula Area Eastern District black rockfish jig season harvest and effort, 1990–2011.

Year ^a	Vessels	Landings	Directed GHL ^b	Pounds	Price Per Pound ^c
1990	0	0	-	0	na
1991	1	1	-	Confidential	Confidential
1992	0	0	-	0	na
1993	0	0	-	0	na
1994	0	0	-	0	na
1995	8	49	-	120,745	\$0.33
1996	19	78	-	150,188	\$0.25
1997	9	32	-	109,076	\$0.34
1998	6	18	100,000	84,145	\$0.29
1999	9	38	100,000	55,308	\$0.41
2000	20	73	100,000	94,797	\$0.35
2001	30	82	100,000	101,605	\$0.36
2002	9	30	100,000	102,114	\$0.29
2003	4	6	100,000	5,267	\$0.21
2004	15	24	100,000	8,925	\$0.26
2005	11	26	100,000	57,732	\$0.35
2006	3	8	75,000	7,015	\$0.37
2007	2	9	75,000	Confidential	Confidential
2008	0	0	75,000	0	na
2009	3	3	75,000	705	\$0.25
2010	1	1	75,000	Confidential	Confidential
2011	1	2	75,000	Confidential	Confidential

Note: Weights are reported in whole fish pounds. Discards at sea are excluded. Data are confidential in 1990 because fewer than three vessels participated. GHLs were not established prior to 1998 because black rockfish were managed with the federal pelagic shelf rockfish complex.

^a From 1990 to 1997 black rockfish were federally managed. After 1997, the State of Alaska assumed management responsibility from 0–200 nmi. Only mechanical jig and hand troll gear allowed for directed fishing.

^b GHL = guideline harvest level.

^c Price per pound calculated from whole fish pounds sold excluding bait and meal.

Table 21.—Regulation development of the black rockfish fishery in the Kodiak, Chignik and South Alaska Peninsula areas.

YEAR	REGULATION
Pre-1997	<ul style="list-style-type: none"> ● Black rockfish managed by NMFS
1997	<ul style="list-style-type: none"> ● NPFMC removes black rockfish from Pelagic Shelf Rockfish Group ● State-waters managed separately from federal waters: <ul style="list-style-type: none"> ○ Kodiak Area managed for 170,000 pounds ○ Chignik Area managed for 100,000 pounds ○ South Alaska Peninsula Eastern District managed for 100,000 pounds
1998	<ul style="list-style-type: none"> ● State receives management authority from NMFS for black rockfish in the Exclusive Economic Zone ● Kodiak and Chignik areas and South Alaska Peninsula Eastern District established as non-exclusive registration ● Kodiak Area divided into seven districts each with separate guideline harvest levels (GHL)
1999	<ul style="list-style-type: none"> ● ADF&G reduces the GHL for Northeast District of Kodiak Area from 25,000 pounds to 20,000 pounds
2003	<ul style="list-style-type: none"> ● Kodiak Area requires specific black rockfish area registration ● Kodiak Area trip limit of 5,000 pounds per 5 days ● Chignik Area designated superexclusive registration ● Chignik Area divided into 3 management districts; ADF&G establishes an inseason GHL cap of 45,000 pounds from any one district
2004	<ul style="list-style-type: none"> ● ADF&G reduces the GHL for Westside District of Kodiak Area from 30,000 pounds to 20,000 pounds
2005	<ul style="list-style-type: none"> ● South Alaska Peninsula Eastern District divided into 3 management sections, ADF&G establishes an inseason GHL cap of 45,000 pounds from any one section ● 2,500 pound "incidental" trip limit implemented for vessels fishing during other directed jig groundfish fisheries in Kodiak Area ● Logbook made mandatory for Kodiak Area black rockfish
2006	<ul style="list-style-type: none"> ● ADF&G reduces the GHL in the South Alaska Peninsula Eastern District to 75,000 pounds and section caps removed
2007	<ul style="list-style-type: none"> ● Incidental trip limit in Northeast, Afognak, and Southeast Districts reduced to 1,000 pounds
2011	<ul style="list-style-type: none"> ● Kodiak Area Rockfish Management Plan revised <ul style="list-style-type: none"> ○ Incidental trip limits repealed; replaced with bycatch percentages established by EO

Table 22.—Jig and non-jig harvest of black rockfish from the Kodiak, Chignik, and South Alaska Peninsula Eastern District, 1990–2011.

Year	Jig			Non-Jig			Total Pounds	Discard at Sea
	Vessels	Landings	Pounds	Vessels	Landings	Pounds		
1990	2	8	Confidential	9	35	61,713	Confidential	889
1991	56	318	Confidential	11	24	86,455	Confidential	66
1992	34	167	476,623	13	16	10,528	487,151	100
1993	14	58	105,244	12	22	2,767	108,011	332
1994	23	126	116,724	8	10	2,767	119,491	10,980
1995	40	238	457,325	15	17	4,336	461,661	3,660
1996	62	270	653,811	18	20	7,483	661,293	13,027
1997	64	366	410,984	20	22	3,970	414,954	750
1998	78	396	368,405	24	33	9,771	378,176	5
1999	89	368	194,621	24	39	4,244	198,864	3,615
2000	92	346	436,260	26	30	9,386	445,646	1,250
2001	68	278	417,549	20	29	7,862	425,411	5,005
2002	33	164	379,296	22	27	9,251	388,546	0
2003	47	136	136,102	24	25	5,119	141,221	44
2004	56	174	230,227	31	41	1,966	232,194	932
2005	40	127	224,179	22	25	1,298	225,478	4
2006	28	109	Confidential	28	36	29,347	Confidential	607
2007	22	112	243,172	63	139	34,758	277,930	220
2008	17	95	Confidential	30	52	5,118	Confidential	7,000
2009	21	95	136,272	23	30	1,033	137,305	310
2010	13	80	150,949	60	108	15,776	166,725	11,500
2011	23	70	142,176	65	114	14,401	156,577	15,233

Note: Weights are reported in whole fish pounds. Discards at sea are excluded from all but the discard at sea column. Prior to 1998, there were no guideline harvest levels (GHLs) established for black rockfish; they were managed as part of the federal Pelagic Shelf complex. Data in some years are confidential to maintain confidentiality in the individual area tables (Tables 18, 19, and 20).

Table 23.—Jig harvest of black rockfish from Kodiak, Chignik, and South Alaska Peninsula areas by district, 2011.

Area/District	GHL ^a	Harvest ^b	Directed Fishery Closure Date	Pounds	
				Directed ^c	Other ^d
Kodiak Area					
Afognak	35,000	36,062	May 10	35,823	Confidential
Northeast	20,000	20,168	March 25	17,505	2,663
Eastside	30,000	37,392	May 31	35,093	2,299
Southeast	30,000	29,624	October 25	29,624	0
Southwest	20,000	0	December 31	0	0
Westside	20,000	Confidential	December 31	Confidential	Confidential
Mainland	20,000	0	December 31	0	0
Total	175,000	Confidential		Confidential	Confidential
Chignik Area					
Sutwik Island	45,000	0	December 31	0	0
Chignik Bay	45,000	Confidential	December 31	Confidential	0
Mitrofanina	45,000	Confidential	December 31	Confidential	0
Total	100,000	Confidential		Confidential	0
South Alaska Peninsula Area - Eastern District					
Total	75,000	Confidential	December 31	0	Confidential

Note: Weights are in whole fish pounds. Discards at sea excluded.

^a GHL = guideline harvest level.

^b Total pounds of black rockfish harvested by jig gear.

^c Total pounds of black rockfish harvested by jig gear in the directed black rockfish fishery.

^d Total pounds of black rockfish harvested by jig gear as bycatch or as incidental harvest.

Table 24.—All skate species harvest from the Central and Western Gulf of Alaska, 1995–2011.

NMFS Area	Year	Vessels	Landings	Pounds	State Waters Harvest (%) ^a	Discards at Sea
Central GOA	1995	73	315	839,907	21	884,503
	1996	143	696	2,221,465	20	952,429
	1997	159	1085	3,372,641	21	664,707
	1998	104	342	843,694	16	779,203
	1999	65	152	210,579	4	734,344
	2000	77	505	1,304,898	3	722,677
	2001	107	486	968,027	13	775,142
	2002	68	369	1,285,419	4	309,661
	2003	136	755	7,040,060	17	367,715
	2004	102	501	3,260,089	6	311,868
	2005	96	554	2,644,925	8	462,275
	2006	98	1,111	2,784,218	14	726,444
	2007	116	1,305	2,585,795	11	654,771
	2008	184	1,534	3,193,782	11	680,498
	2009	161	1,296	4,243,774	13	1,257,932
	2010	173	1,354	5,167,043	8	1,541,934
	2011	218	1,584	5,143,779	9	1,389,894
NMFS Area	Year	Vessels	Landings	Pounds	State Waters Harvest (%) ^a	Discards at Sea
Western GOA	1995	17	23	975	71	9,214
	1996	9	13	343	59	104,237
	1997	6	6	110	42	66,276
	1998	16	17	840	38	55,505
	1999	20	30	1,397	49	93,235
	2000	15	22	11,826	5	217,239
	2001	14	23	6,665	22	52,760
	2002	13	24	182,071	<1	34,360
	2003	30	92	318,171	3	77,368
	2004	22	34	130,139	<1	36,294
	2005	17	24	17,386	3	44,792
	2006	16	25	77,212	<1	37,804
	2007	23	103	69,970	3	53,312
	2008	43	89	132,175	5	59,028
	2009	47	132	151,272	51	235,706
	2010	48	236	305,718	6	603,681
	2011	75	244	254,567	1	551,490

Notes: Weights are reported in whole fish pounds. Discards at sea are excluded from all but the Discards at Sea column.

GOA = Gulf of Alaska.

^a Percent of total skate harvest taken from state waters (0 to 3 nmi).

Table 25.—Lingcod harvest from directed and non-directed fisheries in the Kodiak, Chignik, and South Alaska Peninsula areas, 1988–2011.

Year	Jig	Longline	Pot	Trawl	Total
1988	59	43	0	136,191	136,294
1989	69	0	0	14,324	14,394
1990	1,418	158	402	8,839	10,816
1991	8,375	501	386	663	9,925
1992	5,569	4,261	72	10,897	20,799
1993	0	511	0	4,778	5,289
1994	4,820	803	0	229	5,852
1995	34,574	3,467	79	1,191	39,311
1996	43,403	7,878	0	10,929	62,209
1997	12,637	6,499	4,251	5,267	28,654
1998	5,756	1,771	0	3,514	11,041
1999	1,358	3,802	4,189	4,593	13,941
2000	3,400	6,734	2,676	2,127	14,938
2001	527	4,063	3,597	5,688	13,875
2002	29	6,131	2,749	5,380	14,290
2003	229	9,740	0	5,069	15,037
2004	2,990	6,865	205	16,731	26,791
2005	772	18,831	7,983	14,078	41,663
2006	289	16,028	20,127	12,670	49,114
2007	35	28,163	32,024	45,419	105,641
2008	1,518	31,637	21,278	466,824	521,257
2009	373	28,112	3,614	65,182	97,281
2010	812	31,089	1,935	33,594	67,429
2011	123	25,045	14,963	82,323	122,454

Note: Weights are reported in whole fish pounds. Discards at sea excluded.

Table 26.—Central and Western Gulf of Alaska walleye pollock fishery openings, 2006–2011.

NMFS Area	2006	2007	2008	2009	2010	2011
Area 630	Jan 20 - Feb 15	Jan 20 - Jan 22	Jan 20 - Jan 22	Jan 20 - Jan 22	Jan 20 - Jan 22	Jan 20 - Jan 21
	Mar 10 (12 hrs)	Feb 6 - Feb 8	Mar 3 - Mar 4	Feb 11 - Feb 11	Feb 11 - Feb 11	Feb 28 - Mar 1
	Aug 25 - Sep 27	Feb 12 - Feb 14	Mar 7 - May 31	Mar 9 - Mar 11	Mar 9 - Mar 11	Mar 7 - Mar 12
	Oct 1 - Nov 1	Feb 20 -Feb 22	Aug 25 - Sep 4	Aug 25 - Aug 26	Aug 25 - Aug 26	Aug 25 - Aug 27
		Mar 1 - Mar 2	Oct 1 - Oct 6	Sep 29 - Oct 1	Sep 29 - Oct 1	Sep 4 - Sep 9
		Mar 10 - Mar 11	Oct 12 -Oct 14			Oct 1 - Nov 1
		Aug 25 - Aug 28				
		Sept 15 - Sep 18				
		Sep 21 - Sep 23				
		Sep 25 - Nov 1				
Area 620	Jan 20 - March 21	Jan 20 - Mar 27	Jan 20 - Mar 26	Jan 20 - Mar 6	Jan 20 - Mar 6	Jan 20 - Feb 25
	Aug 25- Aug 28	Aug 25 - Sep 10	Aug 25 - Sep 6	Mar 10 - Mar 14	Mar 10 - Mar 14	Mar 10- Mar 22
	Aug 31 - Sep 3	Sep 21 - Sep 28	Oct 1 - Nov 1	Aug 25- Aug 26	Aug 25- Aug 26	Aug 25 - Sep 4
	Sep 6 - Nov 1	Oct 1 - Nov 1		Sep 29 - Oct 4	Sep 29 - Oct 4	Oct 1 - Nov 1
Area 610	Jan 20 - Jan 22	Jan 20 - Jan 22	Jan 20 - Jan 22	Jan 20 - Jan 22	Jan 20 - Jan 22	Jan 20 - Jan 23
	Jan 26 - Jan 27	Feb 5 - Feb 7	Mar 3 - Mar 4	Mar 1 - Mar 3	Mar 1 - Mar 3	Feb 27 Mar 28
	Mar 10 - Mar 14	Feb 8 - Feb 10	Mar 7 - Mar 31	Mar 10 - Mar 12	Mar 10 - Mar 12	Aug 25 - Sep 17
	Aug 25 - Aug 28	Mar 10 - Mar 13	Aug 25 - Sep 4	Aug 25 - Aug 31	Aug 25 - Aug 31	Oct 1 0 - Nov 1
	Sep 6 - Sep 27	Mar 16 - Mar 18	Oct 1 - Oct 6	Oct 1 - Oct 6	Oct 1 - Oct 6	
	Oct 1 - Nov 1	Mar 21 - Mar 23	Oct 12 - Oct 14			
		Aug 25 - Nov 1				

Table 27.—Walleye pollock harvest in millions of pounds from the Central and Western Gulf of Alaska, 1995–2011.

NMFS Area	Year	Vessels	Landings	Pounds	State Waters	Discards
					Harvest (%) ^a	at Sea
Central GOA	1995	162	934	74.0	12	1.3
	1996	134	1,035	50.4	28	1.6
	1997	190	1,782	121.4	31	1.9
	1998	166	1,847	206.8	34	0.4
	1999	164	1,484	148.2	27	0.5
	2000	137	1,328	106.2	4	0.5
	2001	157	1,421	87.0	21	0.3
	2002	135	1,095	71.0	43	0.2
	2003	120	945	71.8	23	0.2
	2004	108	895	86.7	37	0.4
	2005	105	937	102.9	23	0.3
	2006	123	1,388	96.9	29	0.2
	2007	165	1,635	73.0	26	0.3
	2008	175	1,578	71.5	31	1.0
	2009	167	1,351	53.8	35	0.6
	2010	164	1,477	101.6	23	1.0
	2011	189	1,595	122.0	10	1.7
10-Yr Average		145	1,290	85.1	28	0.6
Western GOA	1995	101	361	65.7	34	0.8
	1996	59	322	52.2	60	0.8
	1997	85	334	62.5	32	0.7
	1998	94	381	65.7	58	0.1
	1999	90	454	52.8	53	0.3
	2000	74	474	47.3	79	0.1
	2001	68	582	67.5	74	0.1
	2002	53	334	38.2	49	0.2
	2003	55	280	37.1	54	0.1
	2004	59	415	50.9	61	0.1
	2005	60	584	67.9	49	0.1
	2006	64	664	53.8	62	0.2
	2007	62	633	38.2	53	0.1
	2008	57	491	32.8	34	0.0
	2009	64	416	30.7	68	0.1
	2010	67	642	57.1	58	0.1
	2011	72	721	45.0	53	0.2
10-Yr Average		61	518	45.1	54	0.1

Notes: Harvest reported in (millions) whole fish pounds. Discards at sea are excluded from all but the Discards at Sea column.

GOA = Gulf of Alaska.

^a Percent of total walleye pollock harvested in state waters (0 to 3 nmi).

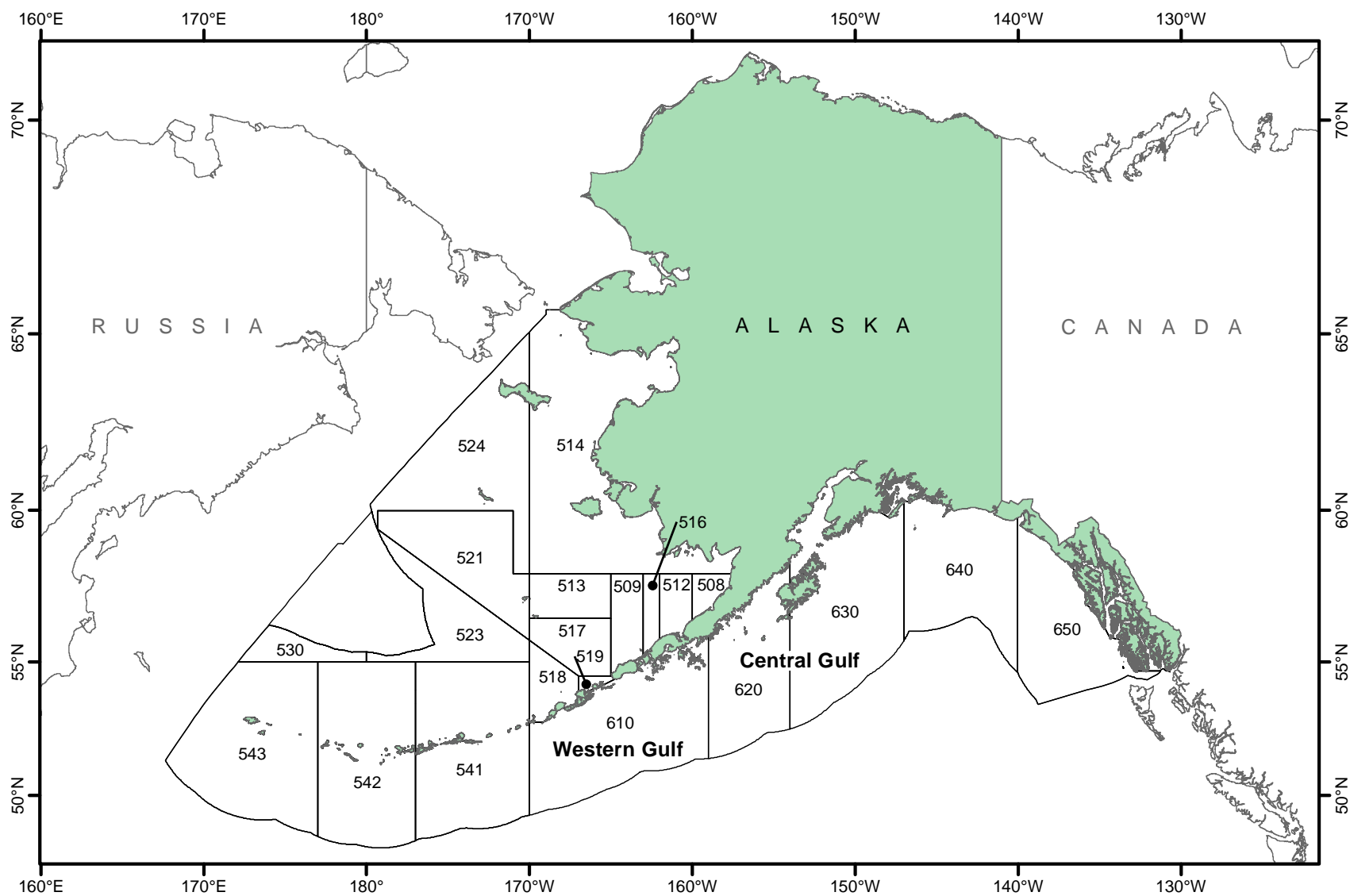


Figure 1.—National Marine Fisheries Service statistical and reporting areas.

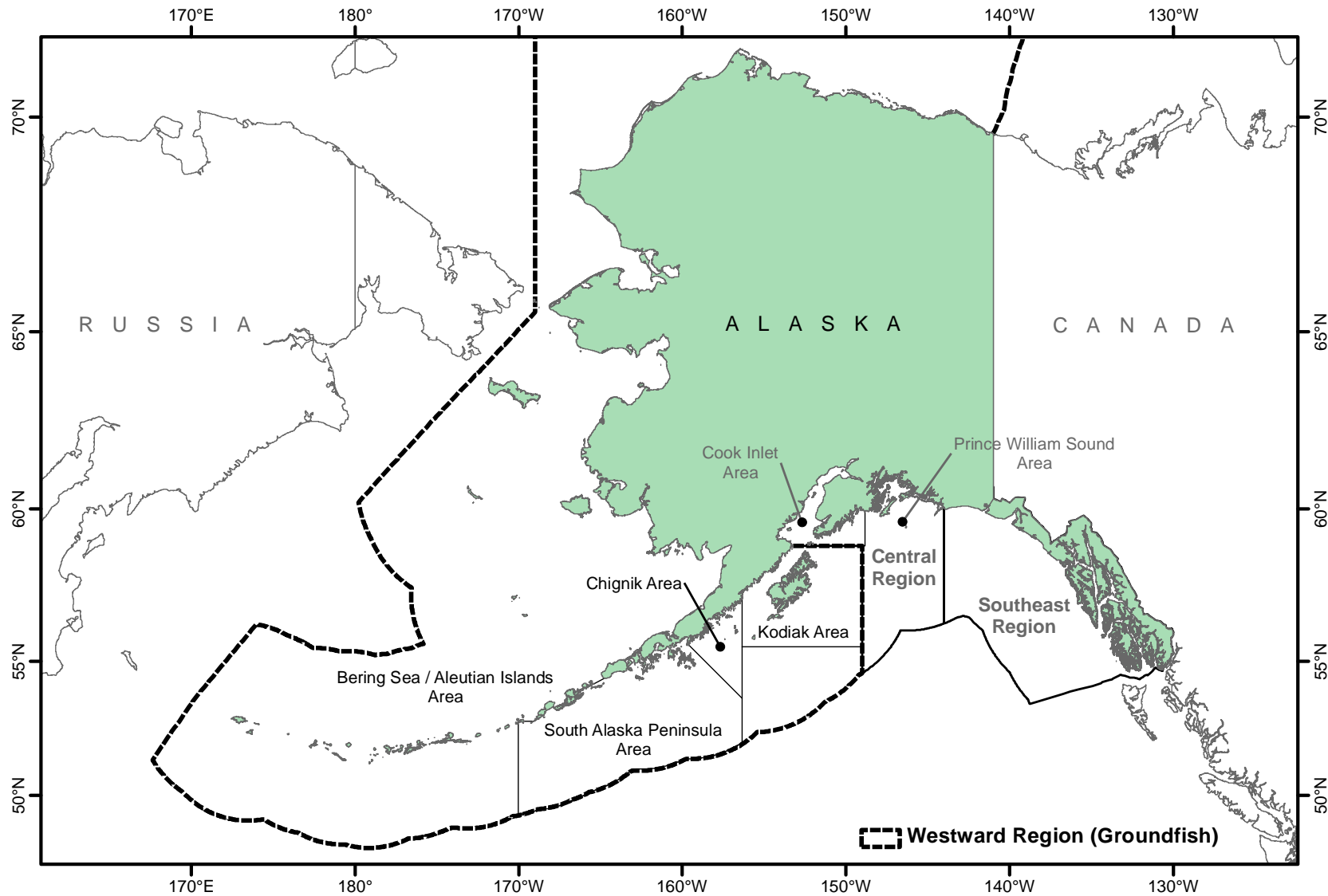


Figure 2.—Alaska Department of Fish and Game groundfish registration areas and regions.

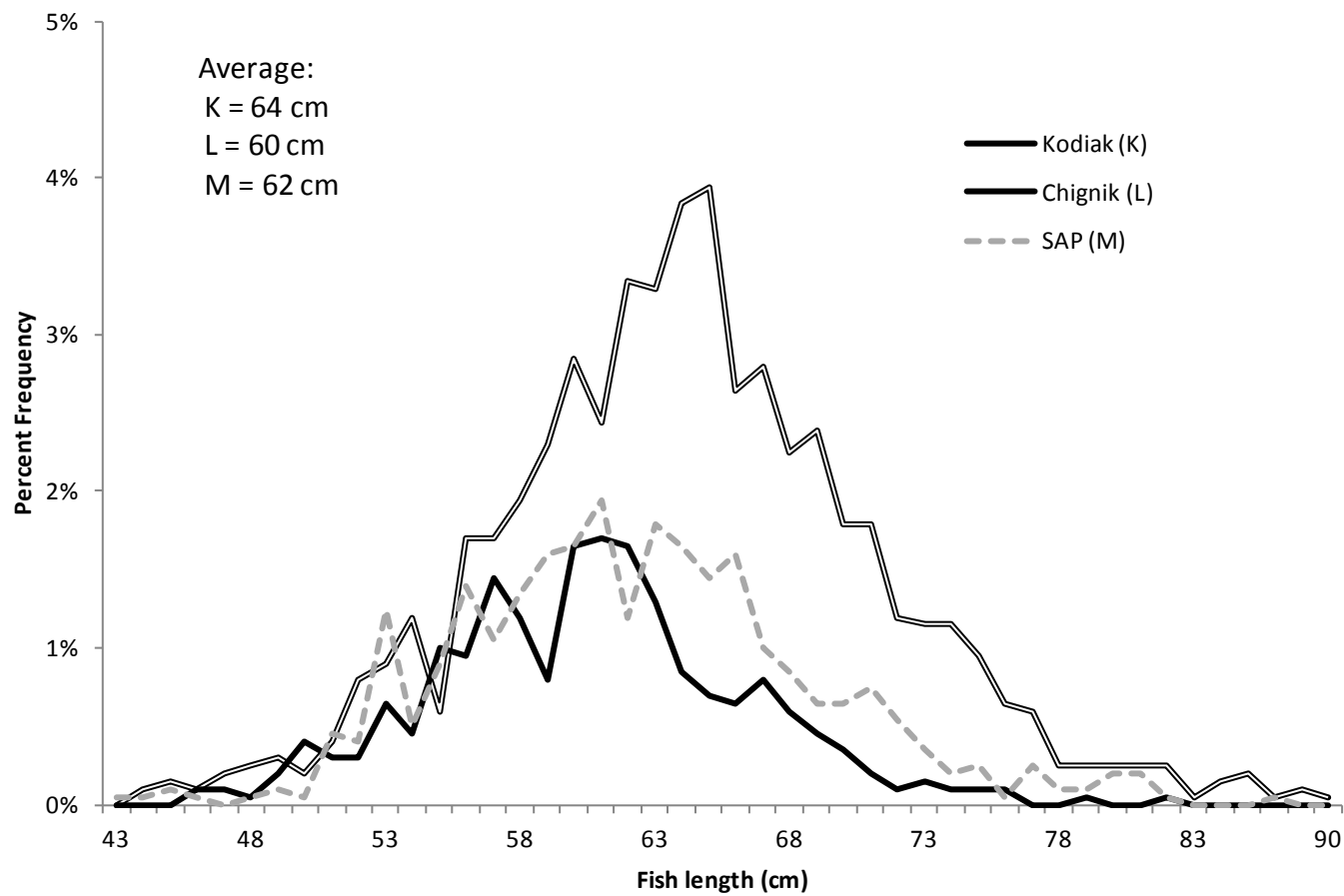


Figure 3.—Pacific cod lengths by area from the 2011 state-waters fisheries in Kodiak (pot and jig), Chignik (pot only), and South Alaska Peninsula (pot and jig) areas.

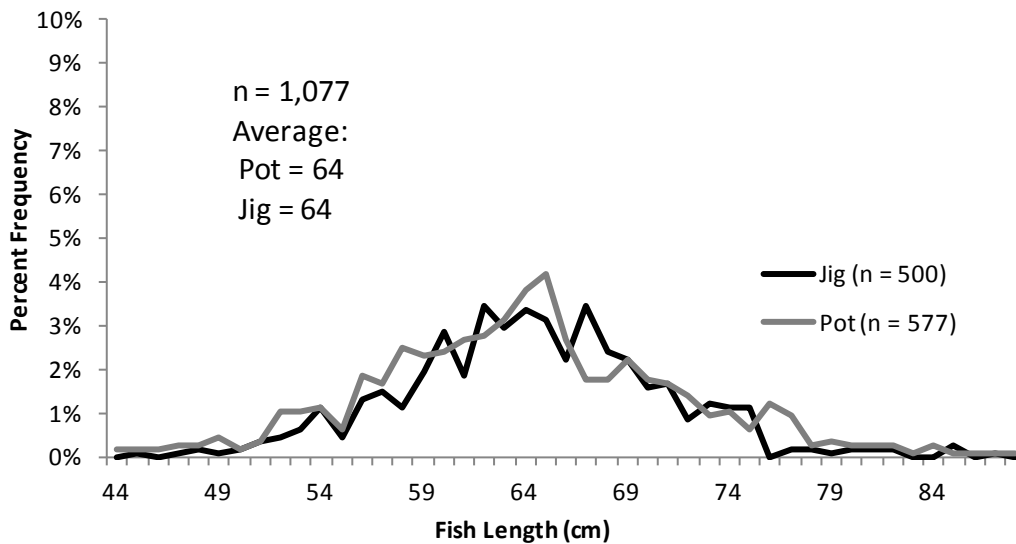


Figure 4.—Pacific cod lengths by gear type from the 2011 state-waters fisheries in the Kodiak Area.

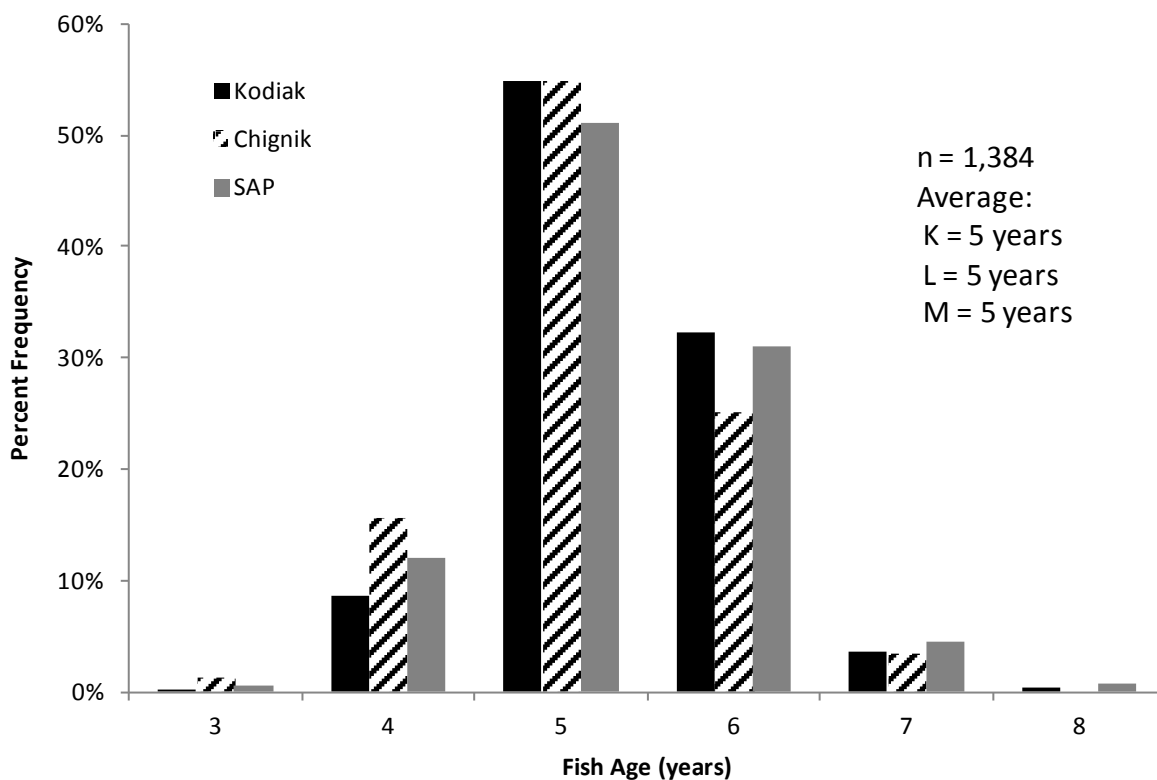


Figure 5.—Age composition of Pacific cod sampled from the 2011 state-waters fishery in Kodiak (pot and jig), Chignik (pot only), and South Alaska Peninsula (pot only) areas.

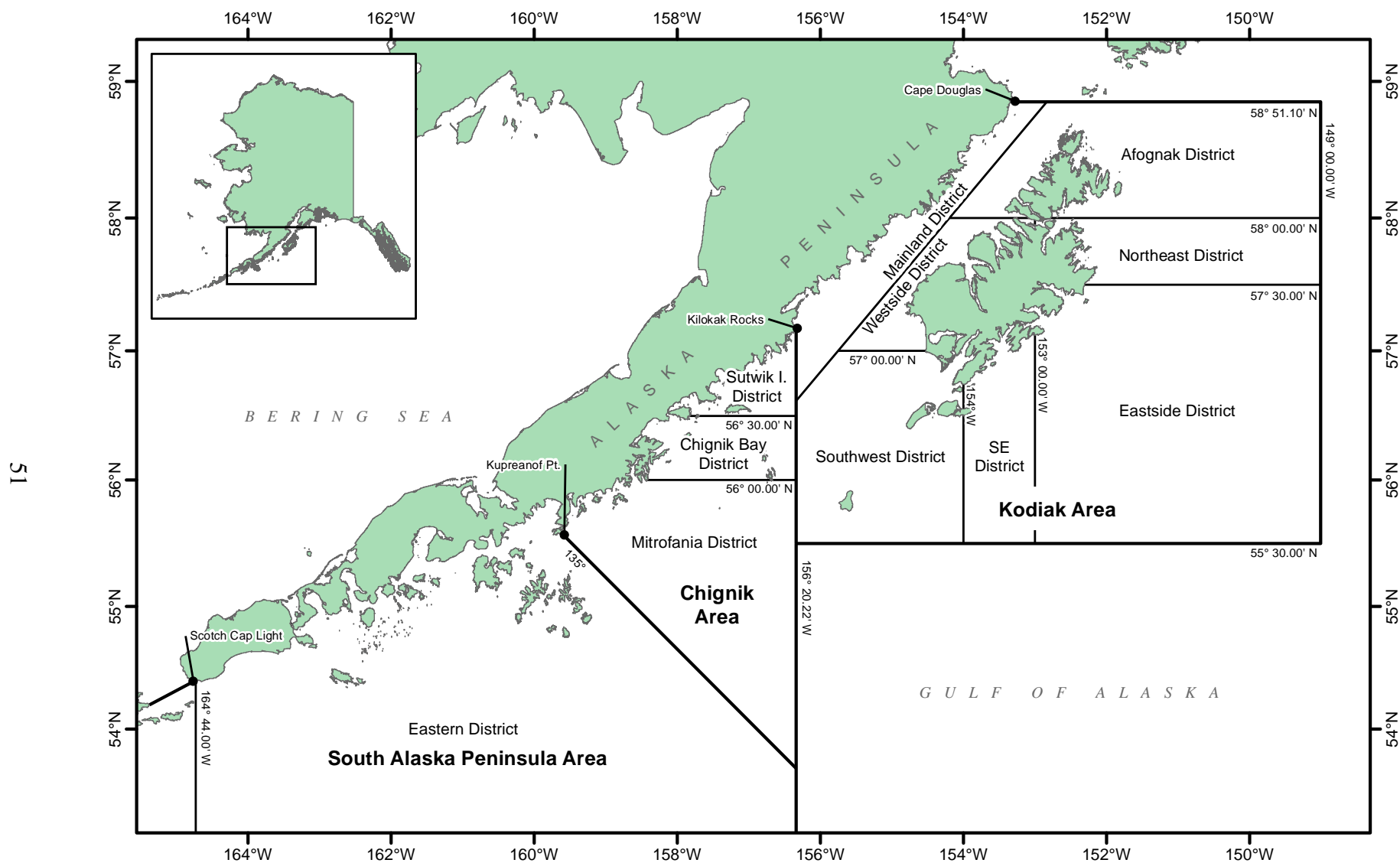


Figure 6.—Kodiak, Chignik, and South Alaska Peninsula black rockfish management areas and districts, 2011.

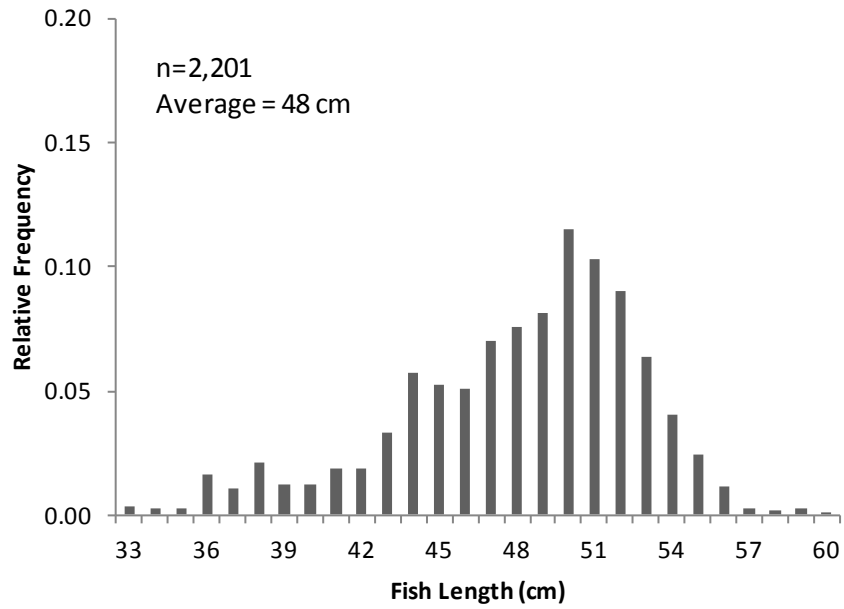


Figure 7.–Size composition of black rockfish sampled from the 2011 fishery in the Kodiak Area.

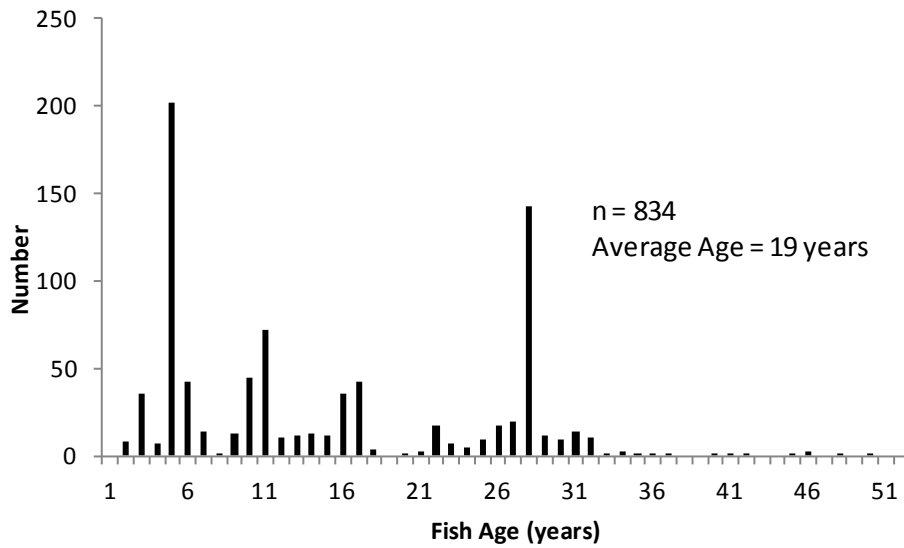


Figure 8.–Age composition of black rockfish sampled from the 2011 fishery in the Kodiak Area.

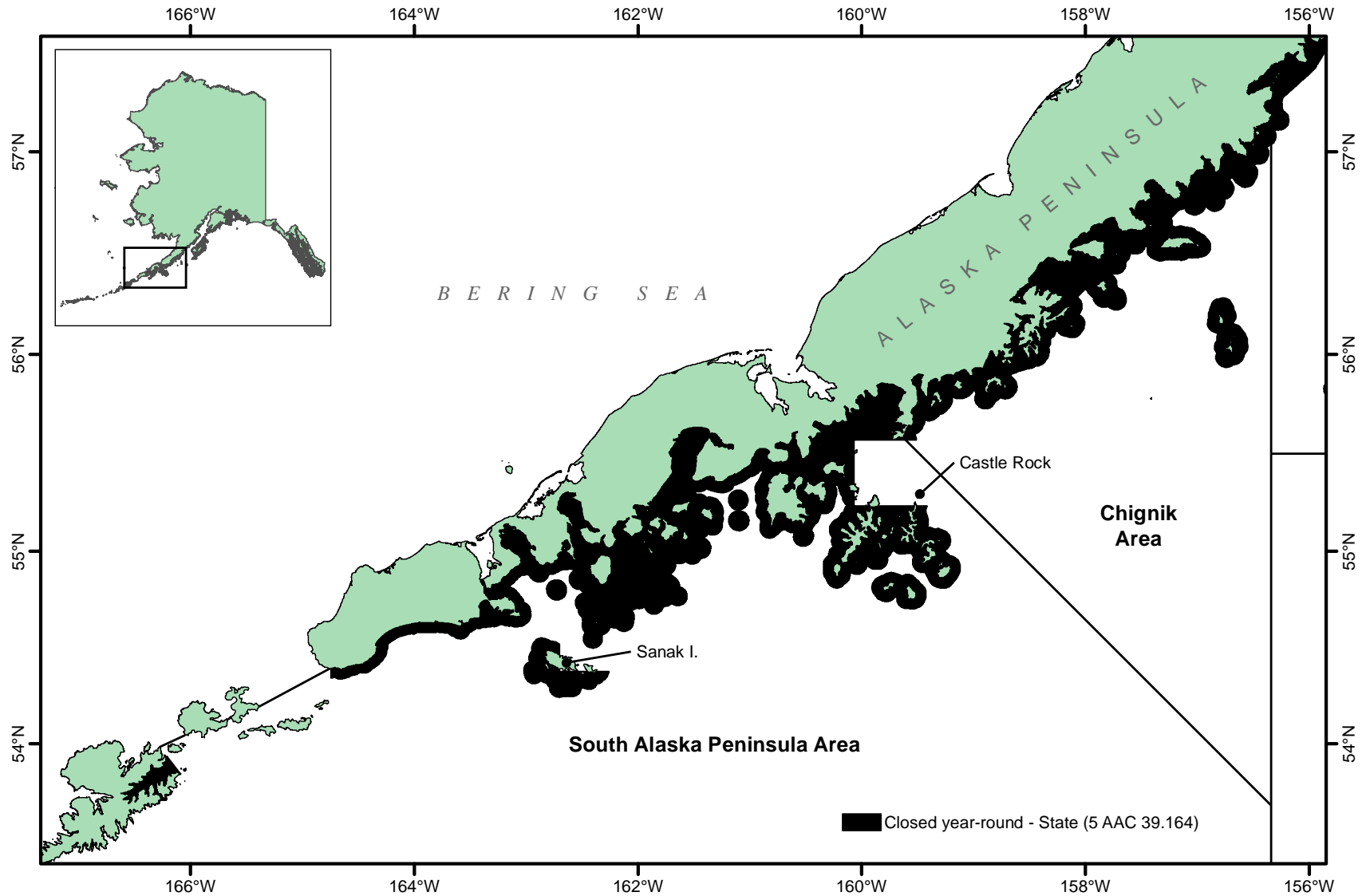


Figure 9.—Chignik and South Alaska Peninsula area non-pelagic trawl gear closures, 2011.

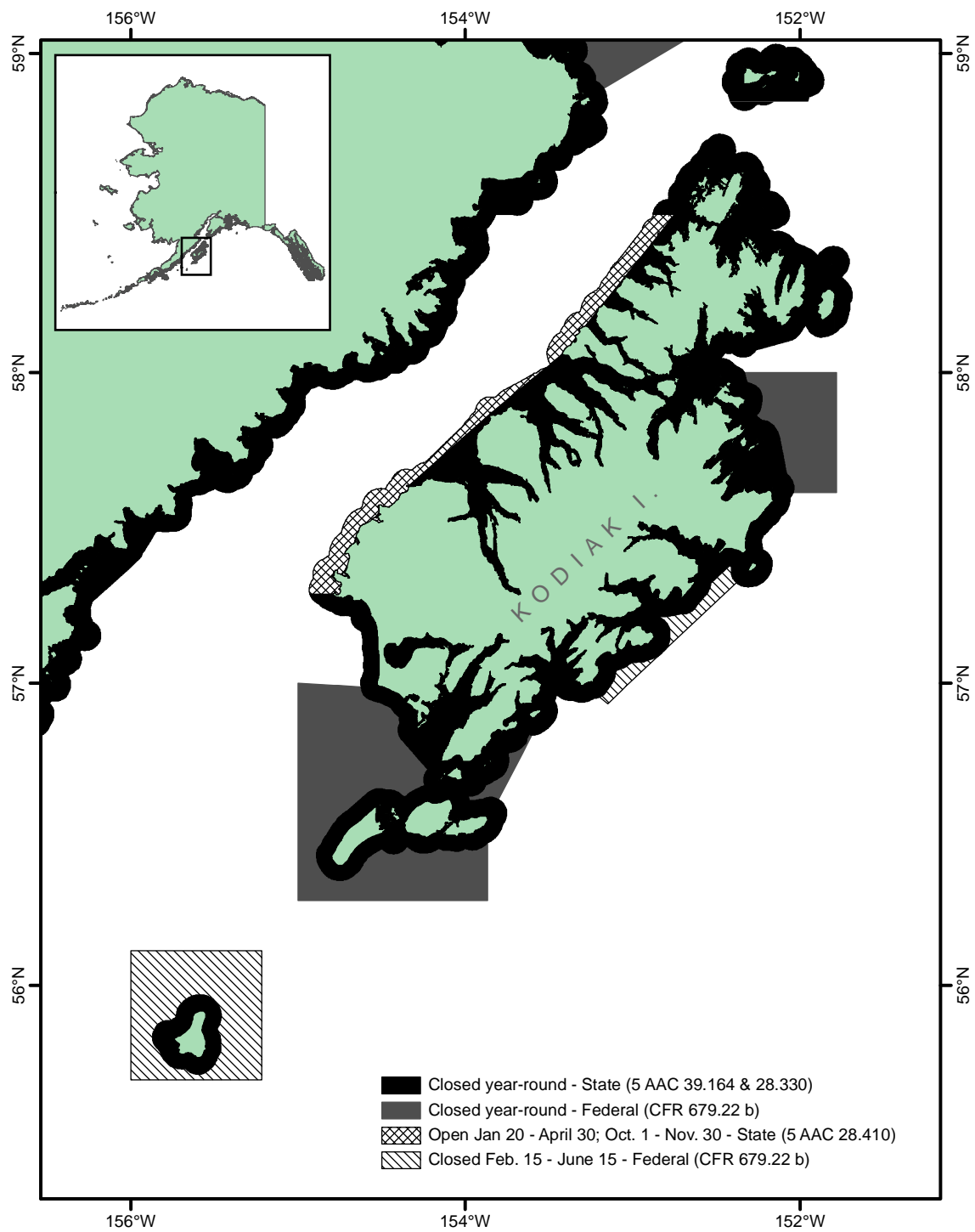


Figure 10.—Kodiak Area non-pelagic trawl gear closures, 2011.

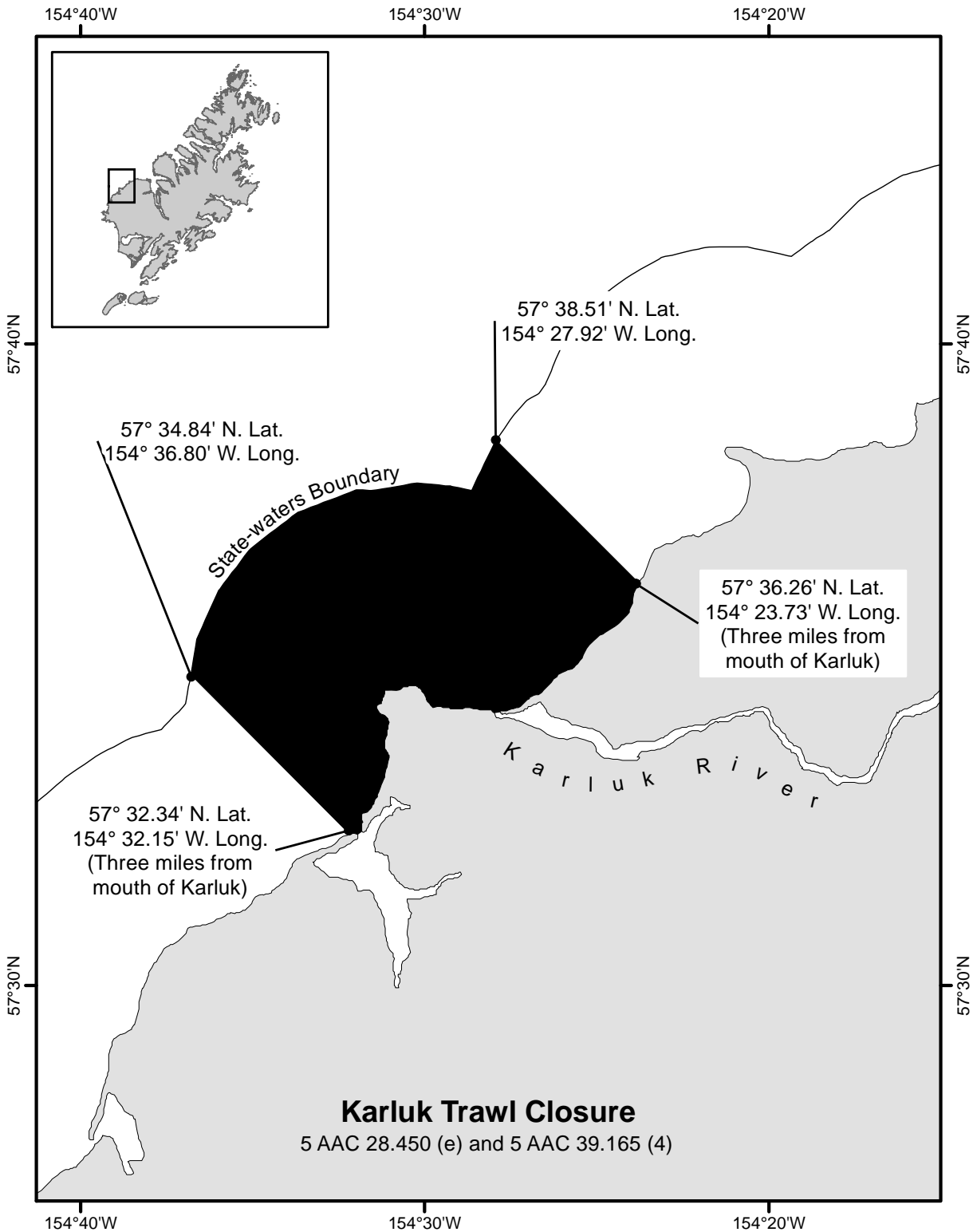


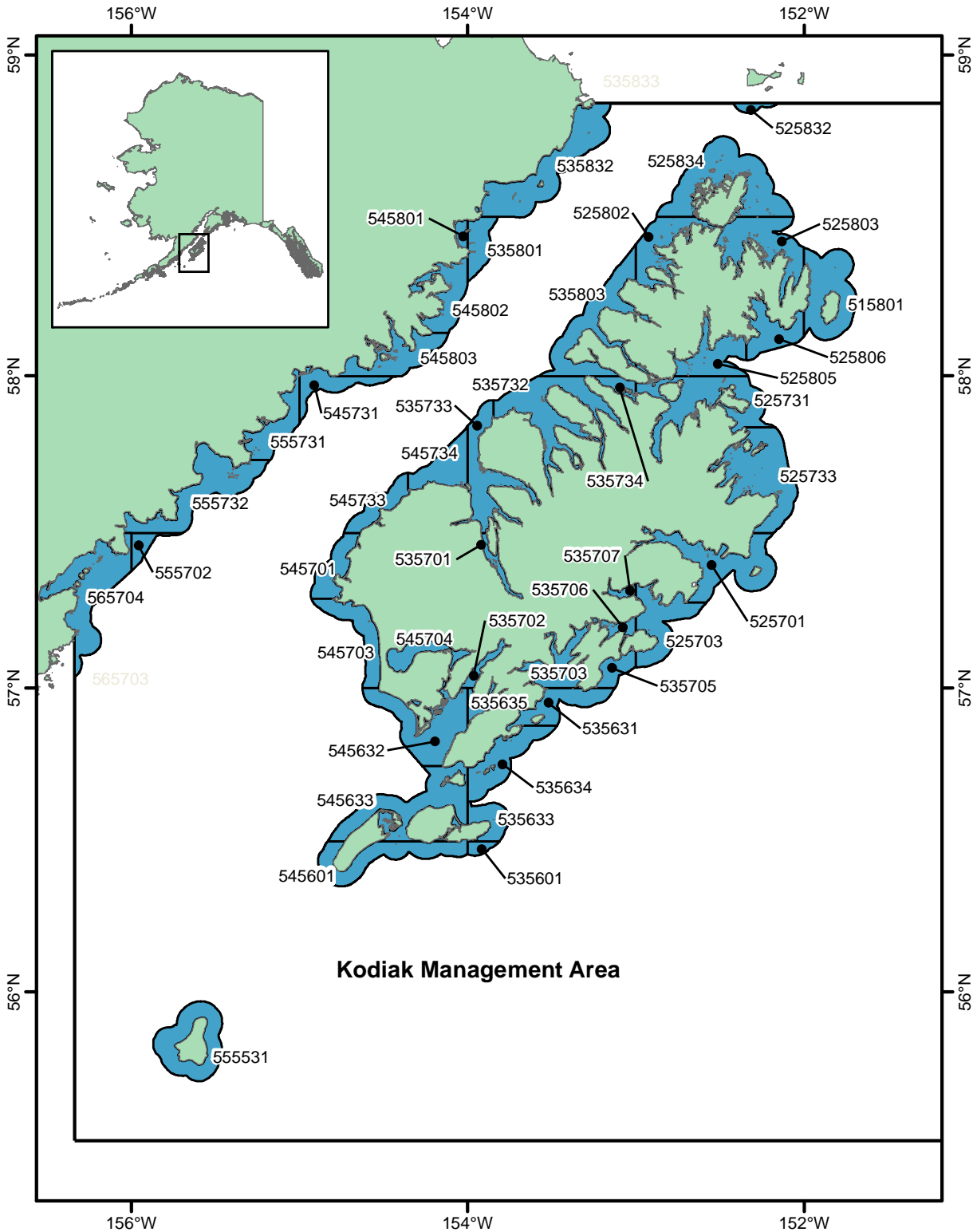
Figure 11.—Karluk trawl closure, 2011.

APPENDIX A: FREQUENTLY USED ACRONYMS AND KEY WORDS

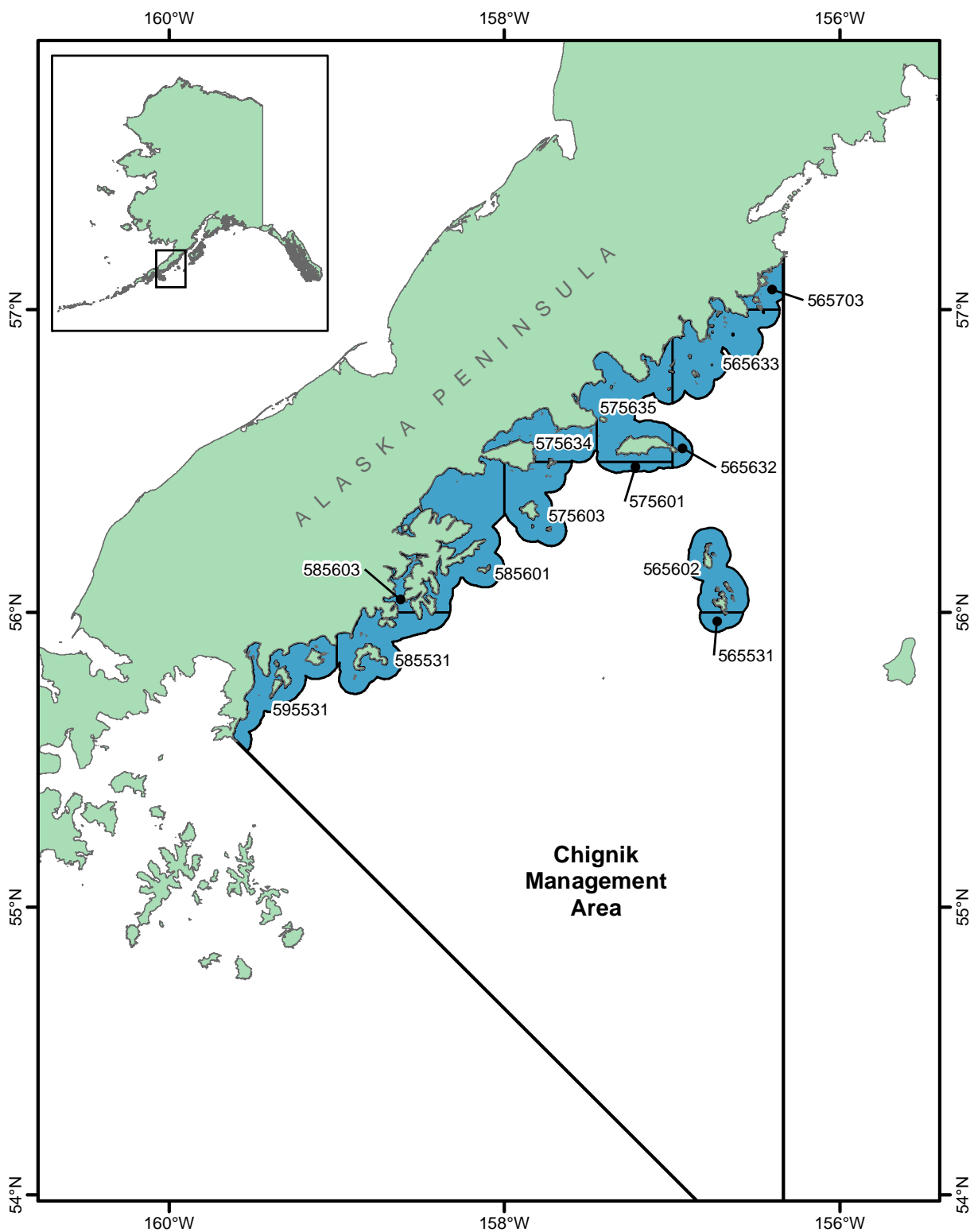
Appendix A1.–Frequently used acronyms and key words.

Acronym	Definition
ABC	Acceptable Biological Catch, stock specification as set by NPFMC on an annual basis
BOF	Alaska Board of Fisheries
BSAI	Bering Sea-Aleutian Islands Area, state management area or federal management area
CGOA	Central Gulf of Alaska, comprised of federal management areas 620 and 630
EEZ	Exclusive Economic Zone, federal waters from 3 to 200 nautical miles offshore
EGOA	Eastern Gulf of Alaska, comprised of federal management areas 640 and 650
EO	Emergency order, management action taken by ADF&G to effect regulatory change
GOA	Gulf of Alaska
LLP	Federal License Limitation Program
mt	metric ton (equal to 2,204.62 pounds)
NMFS	National Marine Fisheries Service
NPFMC	North Pacific Fishery Management Council
Parallel fishery	State waters from 0 to 3 nautical miles opened by the state under federal rules while a federal fishery is ongoing from 3 to 200 nautical miles
SSL	Steller Sea Lion
State waters	Territorial sea from shore to three nautical miles
State-waters fishery	Fishery occurring from shore to 3 nautical miles open under Alaska Board of Fisheries regulations and managed exclusively by Alaska Department of Fish and Game
State-managed fishery	Fishery occurring from shore to 200 nautical miles and managed exclusively by Alaska Department of Fish and Game
TAC	Total Allowable Catch, final federal harvest specification for directed fishing as recommended by NPFMC and set by NMFS
WGOA	Western Gulf of Alaska, federal management area 610

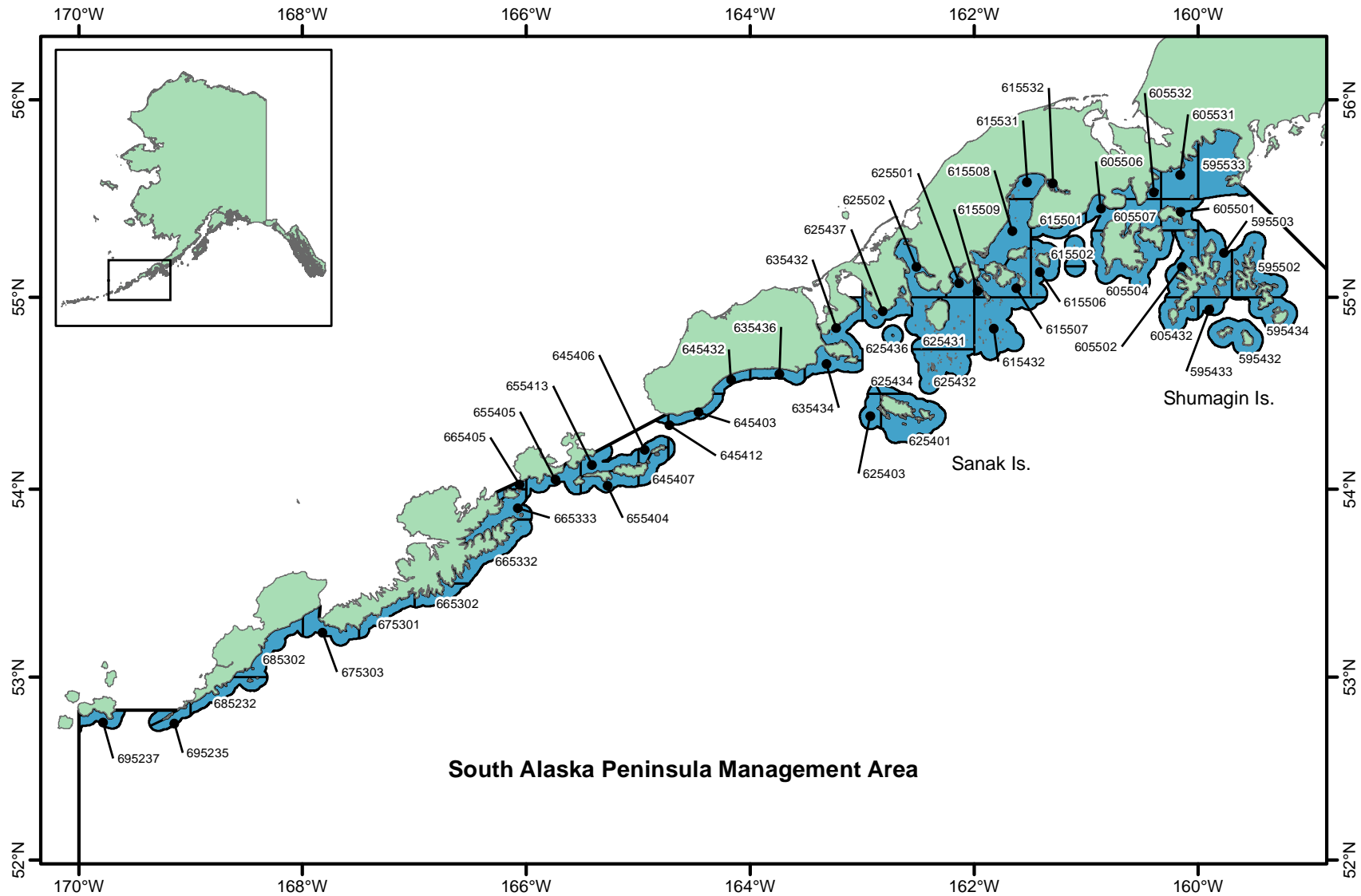
**APPENDIX B: KODIAK, CHIGNIK, AND SOUTH ALASKA
PENINSULA MANAGEMENT AREAS STATE-WATER
STATISTICAL AREAS FOR GROUND FISH**



Appendix B1.—Kodiak Management Area state-waters statistical areas for groundfish.



Appendix B2.—Chignik Management Area state-waters statistical areas for groundfish.



Appendix B3.—South Alaska Peninsula Area state-waters statistical areas for groundfish.