

# Alaska Department of Fish and Game

Habitat Section  
Southeast Region



## SUKKWAN ISLAND UNCATALOGED STREAM 2

## ADDITION

**Water body name:**

**Quad:** Craig A-3

**Upper Reach Latitude:** 55.02772 **Longitude:** -132.78700

**Lower Reach Latitude:** 55.02612 **Longitude:** -132.78650

**Findings:** We surveyed this uncataloged stream using a backpack electrofisher and GPS and captured juvenile coho salmon. The stream descends a steep reach of bedrock and boulders and flows into the intertidal (Table 1; Figures 1, 2).

**Recommendations:** Add this stream into the anadromous waters catalog for rearing coho salmon (Figure 3).

**Nomination:** Pending

**Survey date:** 7/28/2021

**Species & Lifestage:**

**Survey crew:** EF, KD

Table 1.—Sukkwon Island uncataloged stream survey data.

Waypoint	Latitude	Longitude	Notes	Stream Width ft	Stream Substrate	Habitat Features	Gradient %	Sample Effort	Sample Results
1954	55.027723	-132.787015	Several pools with CO potential. Upstream gradient increases to 12% with a jumble of bedrock and boulders. Ending survey.	8-10	Cobble Boulder		12-15	EF	2 SC 2 CO 3 DV



Figure 1.—Juvenile coho salmon captured at waypoint 1954.



Figure 2.—Upstream view from waypoint 1954.

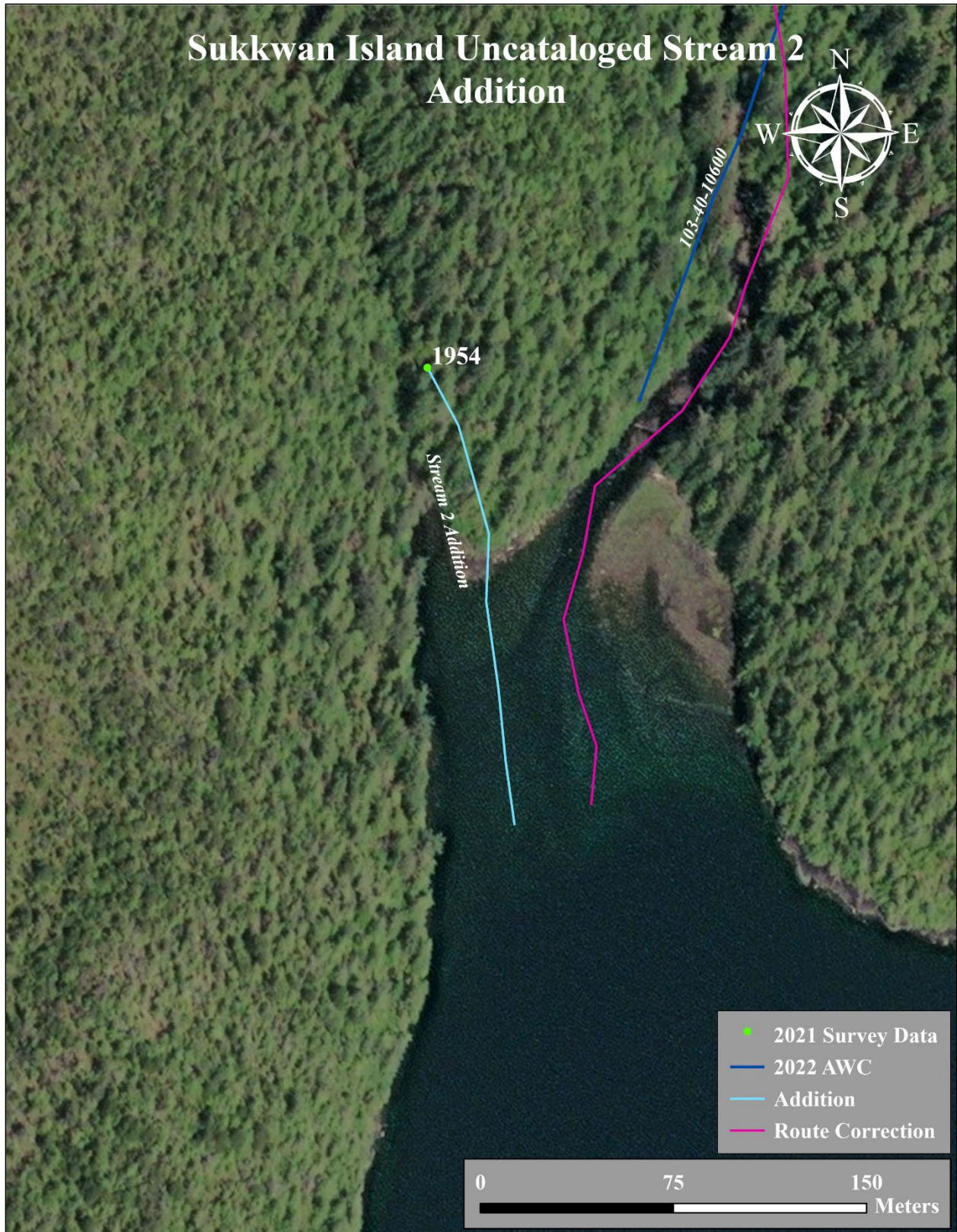


Figure 3.—Sukkwan Island uncataloged stream addition map.