

Alaska Department of Fish and Game

Habitat Section
Southeast Region



111-50-10070-2005

ADDITION

Water body name: Saturday Creek

Survey date: 5/13/2020

Watershed: Herbert River-Eagle River

Species & Lifestage: CHp, COr, DVr

MTR:C068S064E **Quad:** Juneau C-3

Findings: We surveyed this cataloged stream using a backpack electrofisher, minnow traps, and GPS and found juvenile coho salmon. The stream originates from a beaver complex with multiple dams (Table 1; Figures 1–3).

Recommendations: Extend upper extent of Stream No. 111-50-10070-2005 in the anadromous waters catalog and add present coho salmon to species (Figure 4).

Nomination: Pending

Table 1.–111-50-10070-2005 survey data.

Waypoint	Latitude	Longitude	Notes	Stream Width ft	Stream Substrate	Habitat Features	Gradient %	Sample Effort	Sample Results
299	58.5278	-134.8142	Young of the year chum. One year old coho	10-12	Large Gravel		0-1	EF	2 CO 1 CH 2 DV
300	58.5281	-134.8142	Culvert inlet. Sized well, bedded with stream simulation material.						
301	58.5286	-134.8137	Tributary on river left, resembles a slough.	15-20	Fine Organic		0-1		2 CO
302	58.5289	-134.8140	Small foot bridge.					EF	3 CO
303	58.5297	-134.8143		12-15	Large Gravel Large Gravel	Spawning Substrate LWD		EF	2 CO
304	58.5309	-134.8148	Relic beaver dam that was cut out about 50 yards below.						2 CO
305	58.5314	-134.8141	New bridge with 3 piles in the creek.						
306	58.5316	-134.814	Tributary on river left.						
307	58.5315	-134.8128		4-6	Fine Organic		0-1	EF	No Fish
308	58.5316	-134.8126	Channel ends in wetland swale.						
309	58.5318	-134.8125	Top of tributary. Partially backwatered by main channel.						
310	58.5319	-134.8130	Tributary on river left. Several unknown fish seen.						1 SB
311	58.5321	-134.8131							
312	58.5325	-134.8121		15-20	Sand		0-1	EF	2 CO
313	58.5327	-134.8114	Large beaver dam, about 3-4 ft. Water flows underground from beaver dam and takes a 180 degree turn and flows parallel to dam. Future Investigation						No Fish

Table 1.–Continued.

Waypoint	Latitude	Longitude	Notes	Stream Width ft	Stream Substrate	Habitat Features	Gradient %	Sample Effort	Sample Results
1935	58.5328	-134.8110	Trap set above beaver dam. 50-60' wide ponds.		Fine Organic	LWD Beaver Pond		MT	2 CO
1936	58.5329	-134.8094		15-20	Fine Organic	LWD SWD			
1937	58.5330	-134.8079	1-2 ft dam, has flow over it	25-30	Fine Organic	Beaver Pond LWD		MT	5 CO 2 DV 1 SB
1938	58.5330	-134.8074							
1939	58.5332	-134.8063	4-5 ft beaver dam, has flow through it. Also caught 1 sculpin	25-30	Fine Organic	Beaver Pond	0-1	MT	14 CO 3 DV 4 SB
1940	58.5340	-134.8048	Possibly old dam						



Figure 1.–Juvenile coho salmon captured at waypoint 1939.



Figure 2.–Stream No. 111-50-10070-2005 at waypoint 311.



Figure 3.– Stream No. 111-50-10070-2005 at waypoint 1936

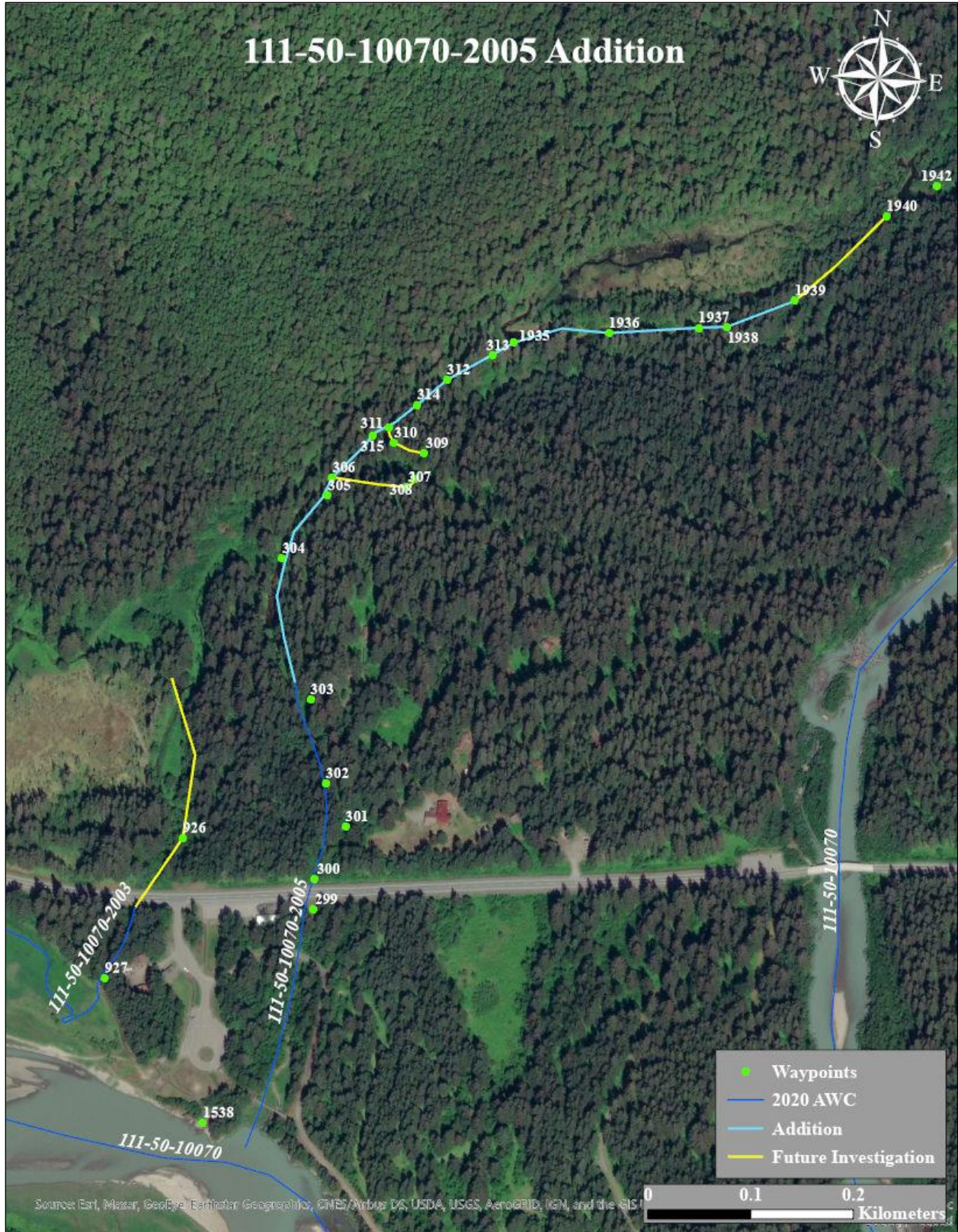


Figure 4.–111-50-10070-2005 addition map.