

115-32-10250-2077-3052**CORRECTION****Water body name:** 30 Mile Creek**Survey date:** 7/8/2017**Watershed:** Klehini River**Species & Lifestage:** CHsr, COsr, DVs**MTR:** C028S055E **Quad:** Skagway B-3**Findings:** We surveyed this stream with a backpack electrofisher and a GPS (Table 1; Figures 1–3). Due to migrations of the Klehini River, the channel has been shortened and portions of the remaining channel are frequently flooded by the Klehini River.**Recommendations:** Correct the stream course in the Anadromous Waters Catalog, remove chum salmon rearing, and add chum salmon migration. Chum salmon do not rear in freshwater.**Nomination:** Pending.

Table 1.–115-32-10250-2077-3052 survey data.

Waypoint	Latitude	Longitude	Notes	Sample Effort	Sample Results
604	59.4211	-136.0934	Fishing in the channel to set the electrofisher. This section already has data for a route correction.	EF	3 CH, 3 CO, 2 CT, 1 DV
605	59.4210	-136.0926	Beginning survey up tributary from the confluence. Silty substrate.	EF	21 CH
606	59.4209	-136.0930	Gravel becoming more prevalent	EF	1 CH, 1 CO, 1 CT, 1 DV
607	59.4209	-136.0932	Tiny flock choked stream that only extends 10m. Followed up.	EF	1 CH, 1 DV
608	59.4208	-136.0934	Came across a small isolated pool.	EF	2 CO
609	59.4208	-136.0936	End of small tributary at seep. Returning to main channel.	EF	No Fish
610	59.4208	-136.0937	Stream channel is becoming more narrow. Silty leaves on the bed.	EF	2 CO, 4 CT, 2 DV
611	59.4209	-136.0940	Stream becomes shallow and narrow with horsetail growing in bed. Large pools form in spots.	EF	2 CO, 1 DV
612	59.4210	-136.0941	Pool near the end of tributary. Stream turns into seep above the pool.	EF	2 CO
613	59.4209	-136.0938	Tracking a small tributary that we passed on river left up.	EF	1 CT
614	59.4210	-136.0939	End of tributary. Leaf litter.	EF	No Fish
615	59.4207	-136.0928	End of the future investigation is flooded by the Klehini.		

Table 1.–Continued.

Waypoint	Latitude	Longitude	Notes	Sample Effort	Sample Results
616	59.4208	-136.0917	Top of future investigation 47. Tracking down.	EF	2 CO
617	59.4208	-136.0911	Channel enters 30 Mile creek. Klehini floods area regularly.		
1229	59.4215	-136.0957	Upstream of Haines Highway. About 3 m of habitat before large waterfall over 10 m tall and >50% gradient.	EF	No Fish



Figure 1.–Juvenile chum and coho salmon, captured at WP 604.



Figure 2.–Confluence with the Klehini River.

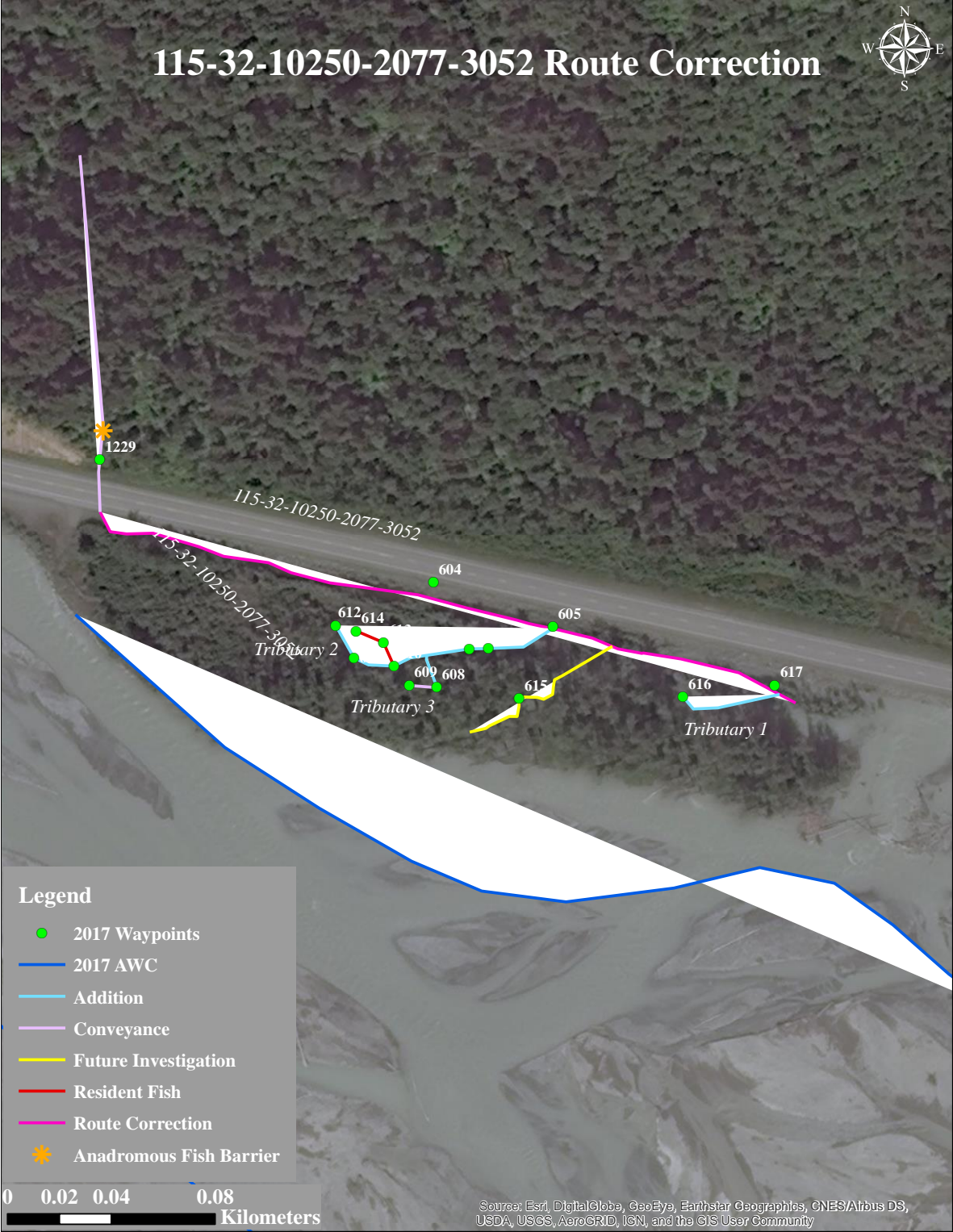


Figure 3.—115-32-10250-2077-3052 route correction map.