



State of Alaska  
Department of Fish and Game  
Sportfish Division

Nomination Form  
Anadromous Waters Catalog

Region Southeastern

USGS Quad(s) SITKA C-4

Anadromous Waters Catalog Number of Water Body 113-51-10040-2006

Name of Water Body

☐ USGS Name ☐ Local Name

☒ Addition

☐ Deletion

☐ Correction

☐ Backup Information

For Office Use

Nomination # 24-746

Revision Year: 2025

Revision to: ☒ Atlas  
☒ Catalog

Revision Code: A-2

Adam Reim  
Fisheries Scientist

8-19-2024  
Date

Ron Benkert  
Habitat Operations Manager

8/19/2024  
Date

Joseph Hays  
AWC Project Biologist

26 July 2024  
Date

Rene Hays  
GIS Analyst

8/23/24  
Date

OBSERVATION INFORMATION

Species	Date(s) Observed	Spawning	Rearing	Present	Anadromous
coho salmon	08/04/2023		✓		✓
Dolly Varden	08/04/2023		✓	✓	

~ADD new AWC Stream #113-51-10040-2006 with COHO salmon REARING.

*\*Process Nom #24-745 first\**

Comments:

Coordinates (Lat,Long): Upper(57.530490 , -135.1760024) Lower(57.527928 , -135.180776)

Name of Observer (please print):

Nicholas Jensen

Signature:

10.231.39.10 (Web Nomination)

Date: 03/27/2024

Agency:

Address:

802 3rd St First Floor

Juneau, AK 99824

This certifies that in my best professional judgment and belief the above information is evidence that this waterbody should be included in or deleted from the Anadromous Waters Catalog.

Signature of Area Biologist: \_\_\_\_\_

Date: \_\_\_\_\_

Revision 3/16

Name of Area Biologist (please print): \_\_\_\_\_

## 113-51-10040 Tributary 1

## ADDITION

**Water body name:**

**Quad:** Sitka C-4

**Upper Reach Latitude:** 57.530490 **Longitude:** 135.1760024

**Lower Reach Latitude:** 57.527928 **Longitude:** -135.180776

**Survey date:** 8/4/2023

**Species & Lifestage:**

**Survey crew:** DK, FC

**Findings:** We surveyed this uncataloged stream using a backpack electrofisher, baited minnow traps, and GPS and captured juvenile coho salmon and Dolly Varden (Table 1; Figures 1–3). Coho salmon were visually identified in this stream by Habitat Biologists due to an electrofisher malfunction; however, a photo of juvenile coho salmon caught at waypoint 444 (tributary 4) is included. Upstream of waypoint 524, the stream went subsurface for several hundred feet, then reforms where we captured only resident fish. Fish habitat continues upstream where continuous surface flow is reestablished.

**Recommendations:** Add this uncataloged stream to the anadromous waters catalog for rearing coho salmon to waypoint 524 (Figure 4).

**Nomination:** Pending

Table 1.–113-51-10040 tributary 1 survey data.

Waypoint	Latitude	Longitude	Notes	Stream Width ft	Stream Substrate	Habitat Features	Gradient %	Sample Effort	Sample Results
443	57.528525	-135.176827	On tributary to cataloged stream; young-of-year CO observed via visual identification. Will survey further upstream near road crossing.	20-25	Large Gravel Small Gravel	Spawning Substrate	1-2	VI	3 CO
445	57.534116	-135.171523	Minnow trap soaked in large pool downstream of old infiltration gallery with planking from water intake.	30-40	Cobble Boulder		6-8	MT	3 DV
453	57.533688	-135.172052	Series of log jams with 2-3 ft falls.	25-30	Large Gravel Cobble		4-6	EF	2 DV
454	57.532453	-135.172860	Stream loses all flow, bedload accumulation downstream. Between waypoints the stream continued to lose water.	25-30	Large Gravel Cobble		4-6	EF	2 DV
455	57.531069	-135.174990	Bridge over channel, currently dry. Documented in upstream waypoints.	25-30	Cobble Large Gravel		2-4	Not Fished	
460	57.529948	-135.176989	Numerous coho observed.	15-20	Small Gravel Small Gravel	Spawning Substrate	1-2	VI	10 CO
461	57.530310	-135.177216	Transitions to beaver dam outlet, thick fine substrate.		Fine Organic		2-4	VI	5 CO
462	57.530368	-135.176972	Small tributary on stream left. School of coho observed upstream in tributary.	4-6	Large Gravel		1-2	VI	5 CO



Table 2.—Continued.

Waypoint	Latitude	Longitude	Notes	Stream Width ft	Stream Substrate	Habitat Features	Gradient %	Sample Effort	Sample Results
463	57.530450	-135.176535	Stream goes subsurface 20 ft upstream due to bedload accumulation.						3 CO
524	57.530460	-135.176114	Confluence of dry channel and tributary to channel with beaver pond.						
540	57.534080	-135.171446	Longitudinal profile of dam/water intake structure. Upstream gradient (starting from furthest upstream point working downward): 1. HD 79 2 in VD -3 6in 2. HD 79 6 in VD -3 3 in Slope of wooden structure: HD 16ft 0in VD -3 ft 8in water surface of pool: HD 27ft 8 in VD -8ft 7in water surface second measurement: VD -8ft 7in po ol depth: HD 25 2in VD -10 10in pool trail crest: VD -9 2in HD 30 9 downstream gradient starting from the pool at bottom of structure: 1. 40 ft 11in VD -4 ft 0 2. VD -2ft 2in HD 61 ft 10 in 3. HD 58 5in VD -2ft 9in						



Figure 1.—Channel at waypoint 443, facing upstream.



Figure 2.—Channel at waypoint 443, facing downstream.





Figure 3.—Juvenile coho salmon caught in upstream tributary at waypoint 444.



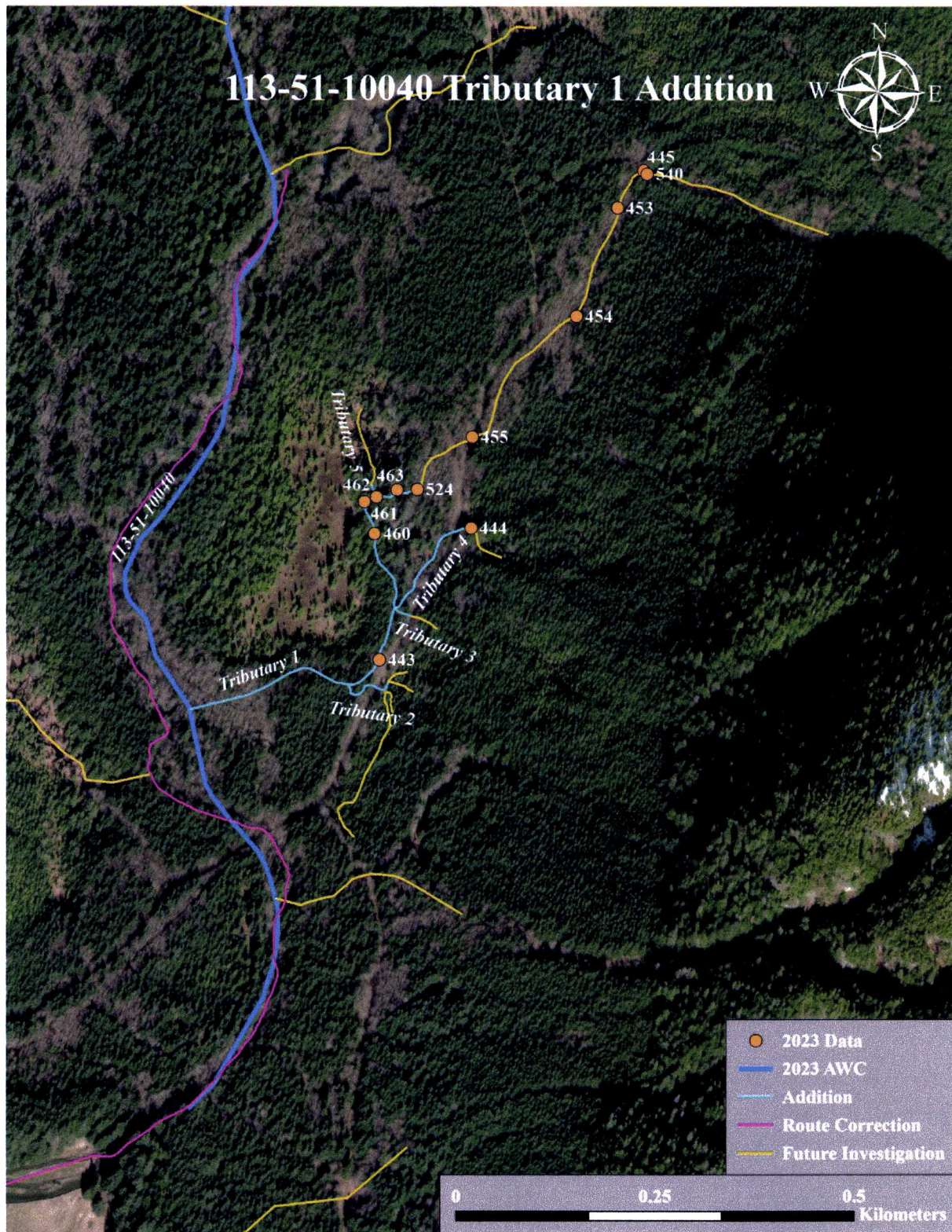
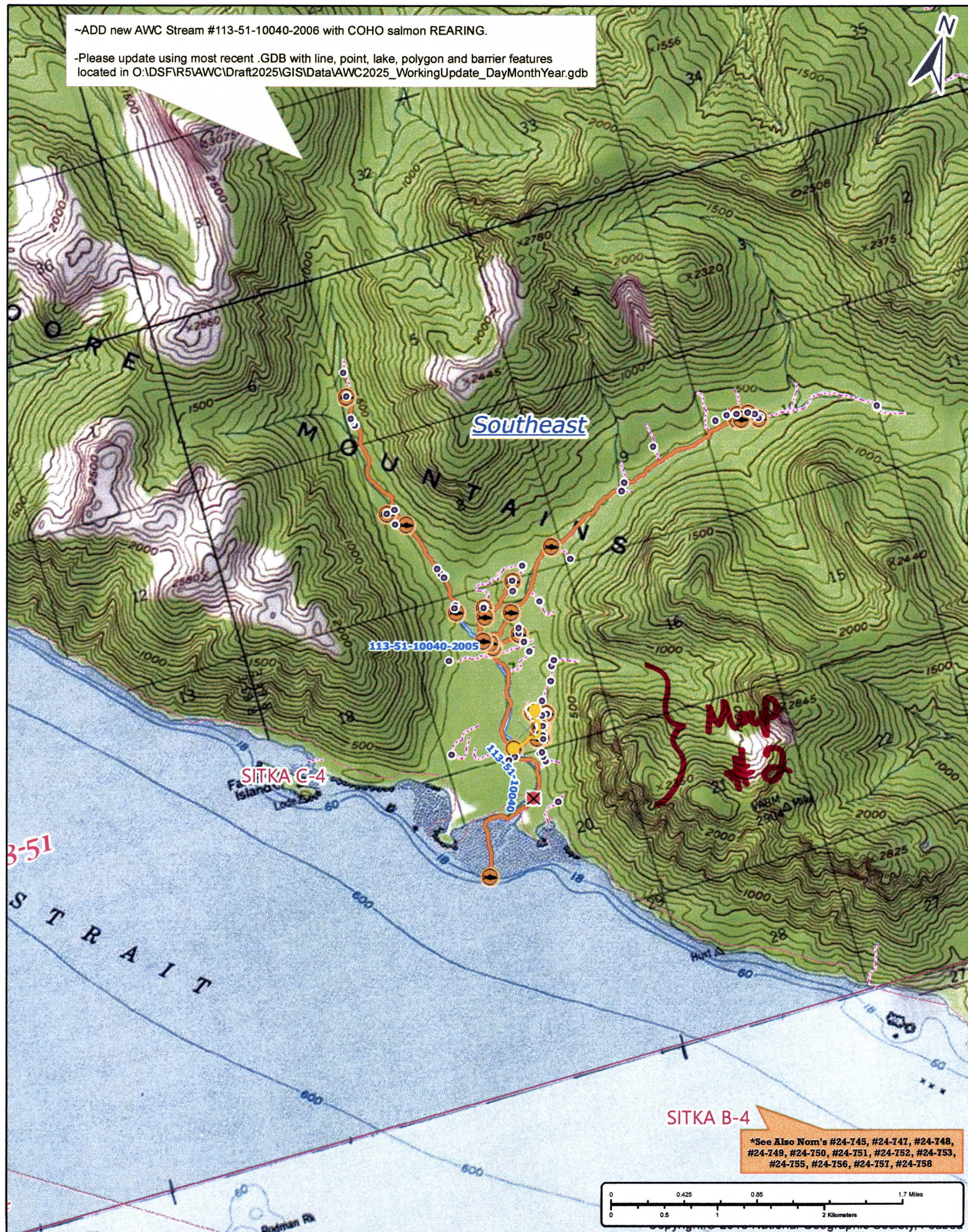


Figure 4.– 113-51-10040 tributary 1 addition map.



-Please update using most recent .GDB with line, point, lake, polygon and barrier features located in O:\DS\FIR5\AWC\Draft2025\GIS\Data\AWC2025\_WorkingUpdate\_DayMonthYear.gdb

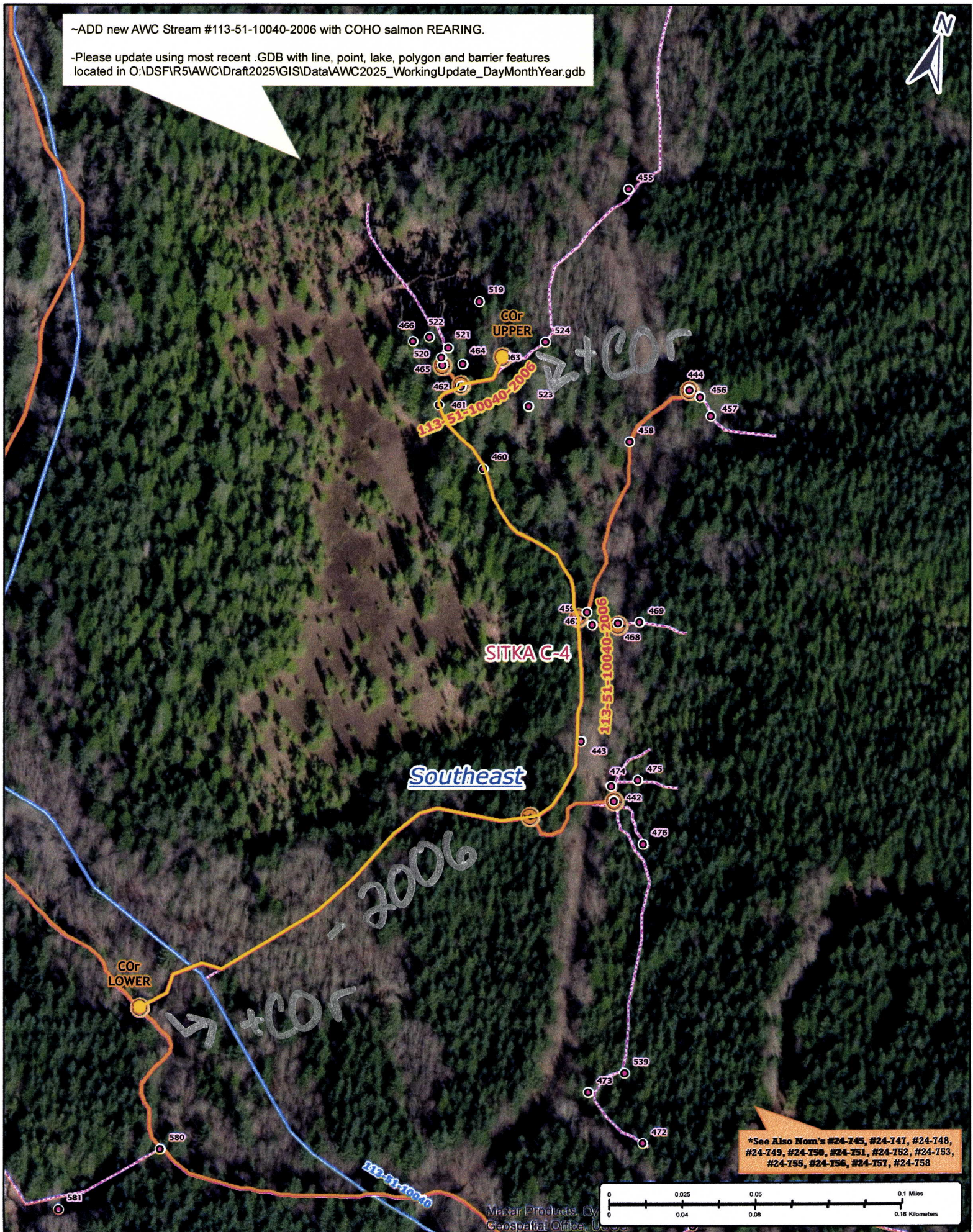


Non #24-746

Map #1



-Please update using most recent .GDB with line, point, lake, polygon and barrier features located in O:\DSF\R5\AWC\Draft2025\GIS\Data\AWC2025\_WorkingUpdate\_DayMonthYear.gdb



Nom # 24-746

Map #2