

Alaska Department of Fish and Game

Habitat Section
Southeast Region



114-27-10300 Tributary 7

ADDITION

Water body name:

Quad: Juneau A-4

Upper Reach Latitude: 58.045948 **Longitude:** -135.291278

Lower Reach Latitude: 58.047191 **Longitude:** -135.289202

Survey date: 6/9/2022

Species & Lifestage:

Survey crew: FC, RR

Findings: We surveyed this uncataloged stream up to an anadromous fish barrier using a backpack electrofisher and GPS. We captured juvenile coho salmon and Dolly Varden. The tributary stream flows through a channel dominated by gravel and fine organic sediment with quality coho salmon rearing habitat (Table 1; Figures 1, 2).

Recommendations: Add this uncataloged stream to the anadromous waters catalog for rearing coho salmon (Figure 3).

Nomination: Pending

Table 1.-114-27-10300 tributary 7 survey data.

Waypoint	Latitude	Longitude	Notes	Stream Width ft	Stream Substrate	Habitat Features	Gradient %	Sample Effort	Sample Results
604	58.044915	-135.292836	Start of survey below road on stream, going to be sampling downstream. Not a lot of water in stream currently but looks like good rearing habitat.	4-6	Fine Organic Small Gravel		4-6	EF	
605	58.045359	-135.292190						EF	2 DV
606	58.045995	-135.291422	Good rearing habitat; 1-2' incised channel.	2-4	Small Gravel Large Gravel	Spawning Substrate	2-4	EF	2 CO 3 DV



Figure 1.—Juvenile coho salmon captured at waypoint 606.



Figure 2.—Channel at waypoint 606.

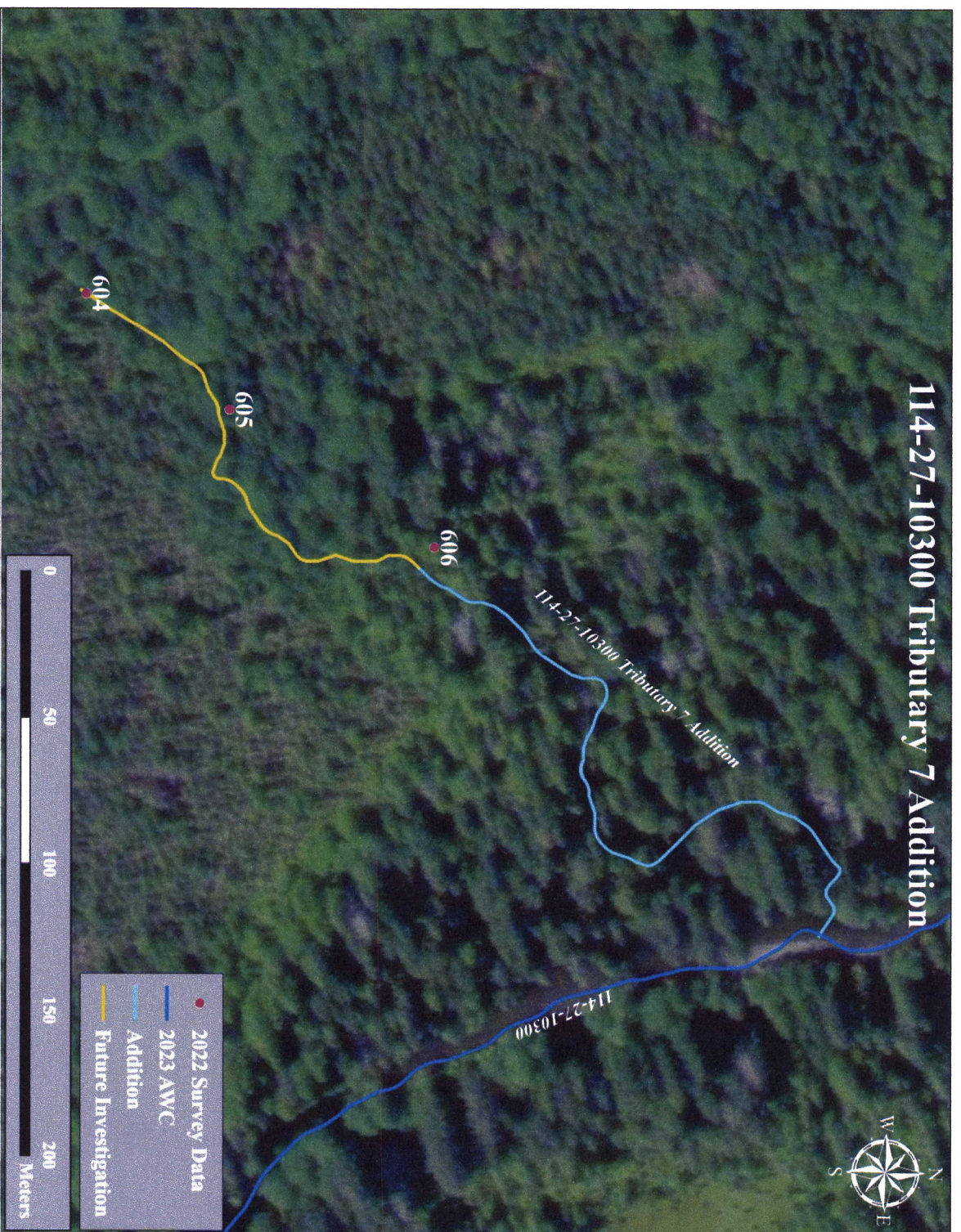
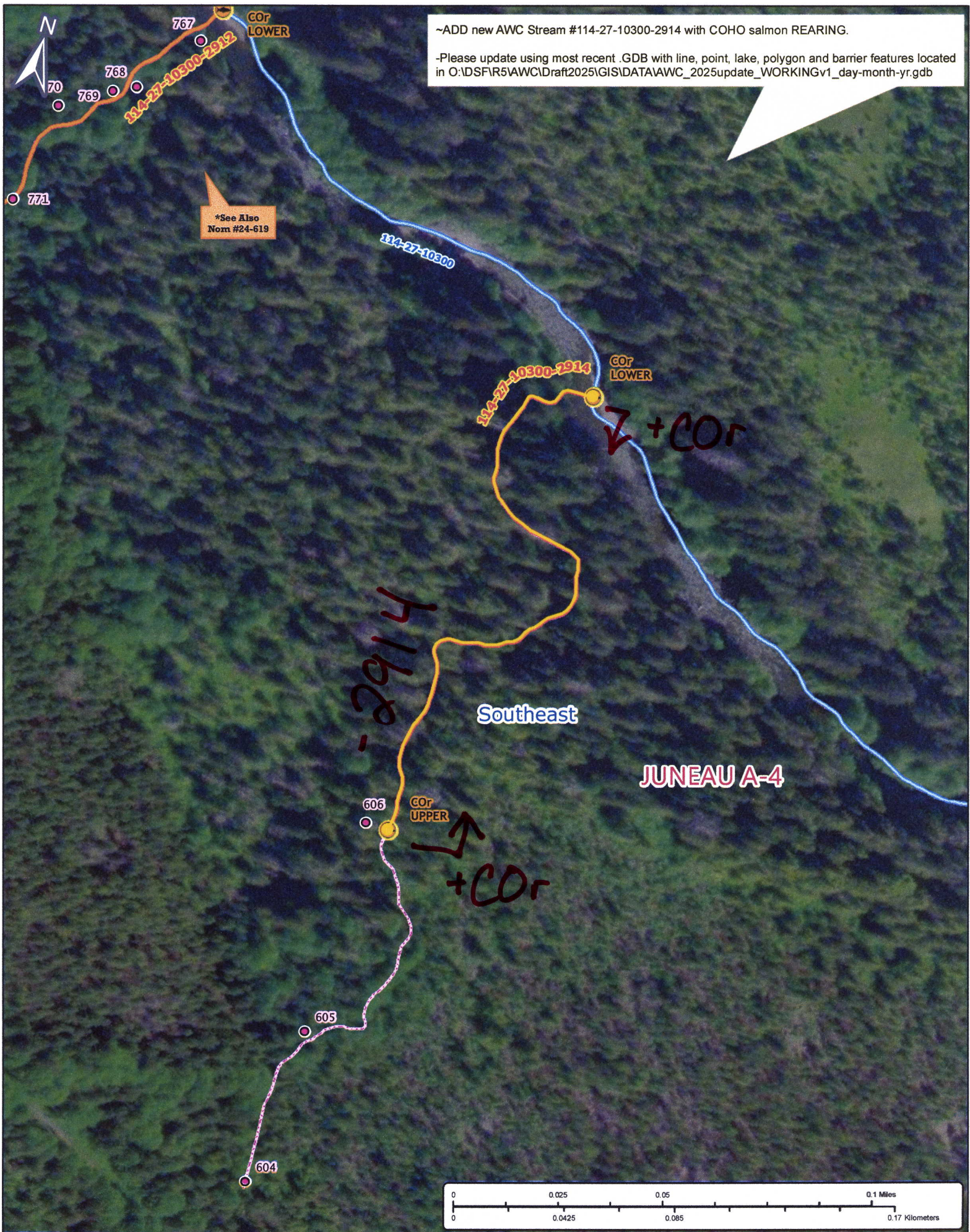


Figure 3.-114-27-10300 tributary 7 addition map.



~ADD new AWC Stream #114-27-10300-2914 with COHO salmon REARING.
-Please update using most recent .GDB with line, point, lake, polygon and barrier features located in O:\DSF\IR5\AWC\Draft2025\GIS\DATA\AWC_2025update_WORKINGv1_day-month-yr.gdb

*See Also
Nom #24-619

Nom #24-620

Map #2