



State of Alaska
Department of Fish and Game
Sportfish Division

Nomination Form
Anadromous Waters Catalog

Region Southcentral

USGS Quad(s) TYONEK D-6

Anadromous Waters Catalog Number of Water Body 247-41-10200-2053-3205-4102

Name of Water Body ☐ USGS Name ☐ Local Name

☒ Addition ☐ Deletion ☐ Correction ☐ Backup Information

For Office Use

Nomination # <u>24-824</u>	<u>Adam Kern</u> Fisheries Scientist Date <u>10-2-2024</u>
Revision Year: <u>2025</u>	<u>Ron Benhart</u> Habitat Operations Manager Date <u>9/9/2024</u>
Revision to: <input checked="" type="checkbox"/> Atlas <input checked="" type="checkbox"/> Catalog	<u>Paula Kiffin</u> AWC Project Biologist Date <u>5 Sept-2024</u>
Revision Code: <u>A-1</u>	<u>Ron Hawn</u> GIS Analyst Date <u>10/8/24</u>

OBSERVATION INFORMATION

Species	Date(s) Observed	Spawning	Rearing	Present	Anadromous
coho salmon (x3)	08/14/2024		✓		✓

~EXTEND existing AWC Stream #247-41-10200-2053-3205-4102 with COHO salmon REARING.

Comments:

Three coho parr captured in minnow traps set on 8/14/24. Traps were set from 1538 to 1833 (approximately 3 hours). Three traps total were set, two slightly upstream (upper sample reach) captured 2 juvi coho, a third (lower sample reach) captured 1 juvi coho. Juvenile coho were IDed, measured, photos were taken, and then were released.

Coordinates (Lat,Long): Upper(61.98420,-152.00703) Lower(61.983846,-152.006548)

Name of Observer (please print): Olivia Mueller
Signature: 10.231.39.10 (Web Nomination) Date: 09/05/2024
Agency: _____
Address: 101 W Benson Blvd Ste 501
Anchorage, AK 99503

This certifies that in my best professional judgment and belief the above information is evidence that this waterbody should be included in or deleted from the Anadromous Waters Catalog.

Signature of Area Biologist: _____ Date: _____ Revision 3/16
Name of Area Biologist (please print): _____

Skwentna Tributary, AWC nomination

8/14/2024

Coordinates: 61.98420, -152.00703 (upper sample site)

Data Sheet:

TICD Minnow Trapping 2024			
System Name: AWC 43 (Jst)		Date: 8/14/24	
Trap#: 2-3	Start: 1538	End: 1833	
Lat: 61.98420		Long: 152.00703	
Species:	Fork length (mm)		
RBT	unmeasured, 103		
Coho	115, 109,		
total: 4			
comments: upstream AWC 43 mt 1, downstream ~ lake			



Coho parr captured in minnow traps. Traps were

set from 1538-1833 on 8/14/24.

Map: Sample site where coho parr captured in minnow traps. Pinned sites are locations where traps containing coho were set in relation to tributary (upper reach of AWC stream 247-41-10200-2053-3205-4102).



From: Andrew Wizik
To: Olivia Mueller; Giefer, Joe (DFG)
Subject: Re: Nom #24-824 Question
Date: Thursday, September 5, 2024 12:46:08 PM
Attachments: image001.png

Hi Joe,

Yes, these braided channels can move quite a bit. I am not clear on the amount of flow heading east along the blue line you drew, but it may have some. On the day we sampled the stream, we followed it up from the Skwentna on the channel that is listed as 4102. I can look to see if it also follows your blue channel the next time we are out there but I have it going straight to the Skwentna.

Let me know if that answers your question.

Have a great day,
Andy

From: Olivia Mueller <omueller@ttcd.org>
Sent: Thursday, September 5, 2024 12:11 PM
To: Andrew Wizik <awizik@ttcd.org>
Subject: Fw: Nom #24-824 Question

Pink points upstream are our minnow traps (1st pt. 43 from map)

From: Giefer, Joe (DFG) <joe.giefer@alaska.gov>
Sent: Thursday, September 5, 2024 11:52 AM
To: Olivia Mueller <omueller@ttcd.org>
Subject: RE: Nom #24-824 Question

It does. Thank you!

And I do have one more question about the hydrography downstream. Looks like it could use some correcting but its always better to see if anyone has been there on the ground/fly-over to confirm.

See below image.

It looks to me like the bulk of Stream #247-41-10200-2053-3205-4102 is probably abandoned stream-channel (red circled area) and I should probably add a connector stream where I hand-drew the dark blue double line? This would also result in adjusting hydrography of #247-41-10200-2053-3205-4092 too.

Always difficult to keep these dynamic braided streams approximate and it looks like this one has changed significantly since these tributaries were first plotted.

Thoughts?



Joe Giefer
Biological Sciences III
Anadromous Waters Catalog (AWC)
Alaska Dept. of Fish & Game
Division of Sport Fish - DTS
333 Raspberry Road, Anchorage, AK 99501
Office 907.561.2526

Submit AWC Nominations electronically through the Online Portal here:
<https://www.aawdallas.com/SubmitAWC/index.cfm?APP=nomSub&lang=en>

From: Olivia Mueller <omueller@ttcd.org>
Sent: Thursday, September 5, 2024 11:43 AM
To: Giefer, Joe (DFG) <joe.giefer@alaska.gov>
Subject: Re: Nom #24-824 Question

CAUTION: This email originated from outside the State of Alaska mail system. Do not click links or open attachments unless you recognize the sender and know the content is safe.

Hi Joe,

One coho was caught in the downstream trap (61.983846, -152.006548), and two coho were caught in the upstream trap (61.98420, -152.00703). Hope that's helpful, let me know if you need any other information.

Thanks!

Olivia

From: Giefer, Joe (DFG) <joe.giefer@alaska.gov>
Sent: Thursday, September 5, 2024 11:38 AM
To: Olivia Mueller <omueller@ttcd.org>
Subject: RE: Nom #24-824 Question

Hi Olivia,

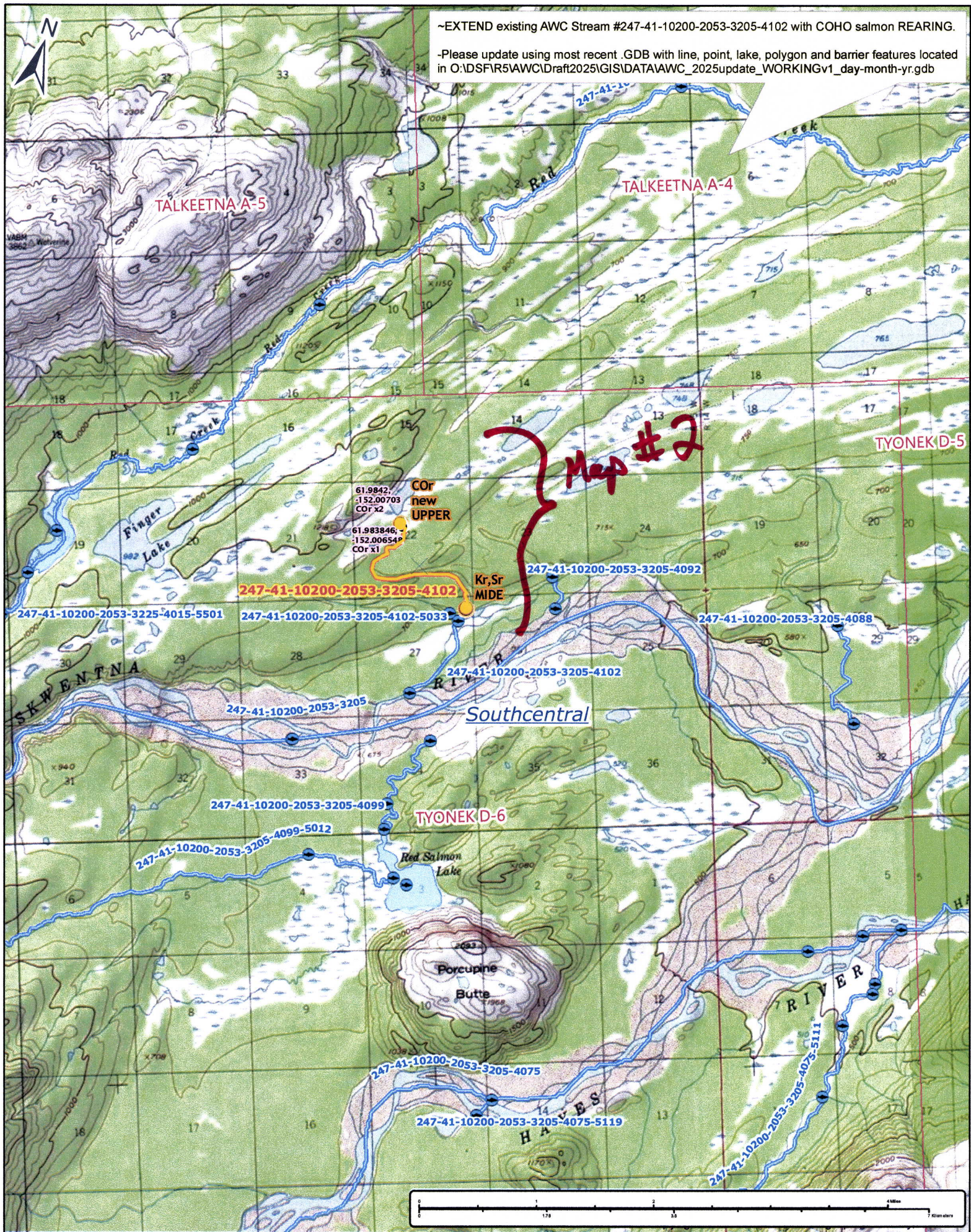
Thank you for the submission. Can you please list the # of coho captured in each trap location for me so I can include that in the nomination information.

Thanks again!

Regards,

Joe Giefer
 Professor, Biology of Fish
Anadromous Waters Catalog (AWC)
 Alaska Dept. of Fish & Game
 Division of Sport Fish - RPS
 333 Raspberry Road, Anchorage, AK 99511
 Office 907-261-2500

Submit AWC Nominations electronically through the Online Portal here:
<http://www.eda.alaska.gov/SLRA/AWC/index.cfm?VITE=nomination>



~EXTEND existing AWC Stream #247-41-10200-2053-3205-4102 with COHO salmon REARING.

-Please update using most recent .GDB with line, point, lake, polygon and barrier features located in O:\DSF\IR5AWC\Draft2025\GIS\DATA\AWC_2025update_WORKINGv1_day-month-yr.gdb

TALKEETNA A-5

TALKEETNA A-4

TYONEK D-5

Map #2

Cor
new
UPPER

61.9842,
-152.00703
COR x2
61.983846,
-152.00654
COR x1

Kr,Sr
MIDE

247-41-10200-2053-3205-4102

247-41-10200-2053-3205-4092

247-41-10200-2053-3205-4088

247-41-10200-2053-3225-4015-5501

247-41-10200-2053-3205-4102-5033

247-41-10200-2053-3205-4102

Southcentral

247-41-10200-2053-3205-4099

TYONEK D-6

247-41-10200-2053-3205-4099-5012

Porcupine
Butte

247-41-10200-2053-3205-4075

247-41-10200-2053-3205-4075-5119

247-41-10200-2053-3205-4075-5111

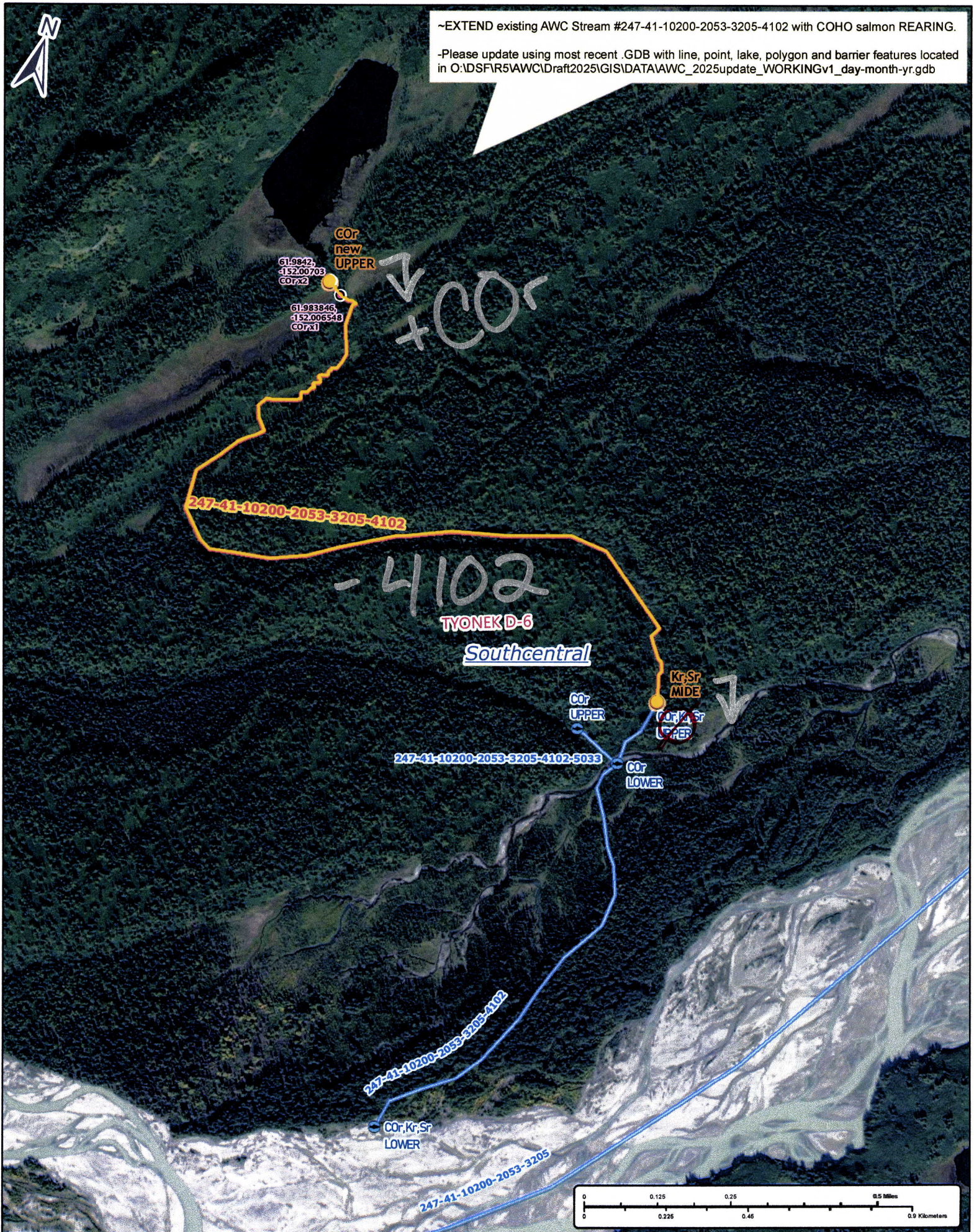
Num #24-824

Map #1



~EXTEND existing AWC Stream #247-41-10200-2053-3205-4102 with COHO salmon REARING.

-Please update using most recent .GDB with line, point, lake, polygon and barrier features located in O:\DSF\R5\AWC\Draft2025\GIS\DATA\AWC_2025update_WORKINGv1_day-month-yr.gdb



Nom #24-824

Map #2