

JB

AWC DATABASE CATALOG/ATLAS
CORRECTION FORM

CORRECTION TO: Atlas X Catalog X

Region: SCN

Map: LISTED

Water Body Number: LISTED

Describe Change(s): Corrections to "orphan" data pts

Change Requested By: Johnson 10/24/2017

Date

Drafted/Digitized By: [Signature]

11/16/17

Date

Revision Code: C-8

Nomination Number: 170409

****ATTACH THIS FORM TO EXISTING NOMINATION FORM****

AWC_CODE	NAME	TYPE	SPECIES	REGION	ITM
223-30-13220-2055		MIDE	Pp	SCN	Anchorage A-3
244-10-10010-2011-3023		MIDE	COp	SCN	Seldovia D-5
245-40-10010	Harriet Creek	MIDE	Kp	SCN	Kenai B-7
247-30-10090-2150-3121	West Fork Coal Creek	MIDE	COp	SCN	Tyonek B-5
247-41-10200-2291-3011	Queer Creek	MIDE	COp	SCN	Talkeetna A-1
247-50-10260-2035		UPPER	Ss	SCN	Anchorage C-6 & SW

Johnson, J D (DFG)

From: Repetto, Skip L (DFG)
Sent: Thursday, October 12, 2017 9:22 AM
To: Johnson, J D (DFG); Graham, Jason D (DFG); Smith, Thalassa M (DFG)
Subject: AWC orphan points

Categories: Red Category

Hi J and Jason and Thalassa,

Back in August, we had talked about finding what I'm going to call orphan points in our GIS data – points that are in the data but do not get used to create linear events, I think J had originally found a problem on the Susitna River. Hence they are errors that need to be fixed or perhaps simply deleted if they don't belong. Luckily my script did not find too many, 48 to be exact. Many are on the same river.

I have a small GDB over here: O:\DSF\R5\AWC\Draft2017\SpeciesEvents\TestEvents.gdb in it we have a table called ptEventsOrphans which contains the 48 pts. The easiest way to see where they occur is to perform a Relate over to the AWC_point layer in the same GDB using a field called "Pt_Join" for the Relate field. This way you can select a record in the orphan table and then hit the Relate button to see the associated point. I created an MXD file with the data and relate set up for your convenience over in O:\DSF\R5\AWC\Draft2017\SpeciesEvents.

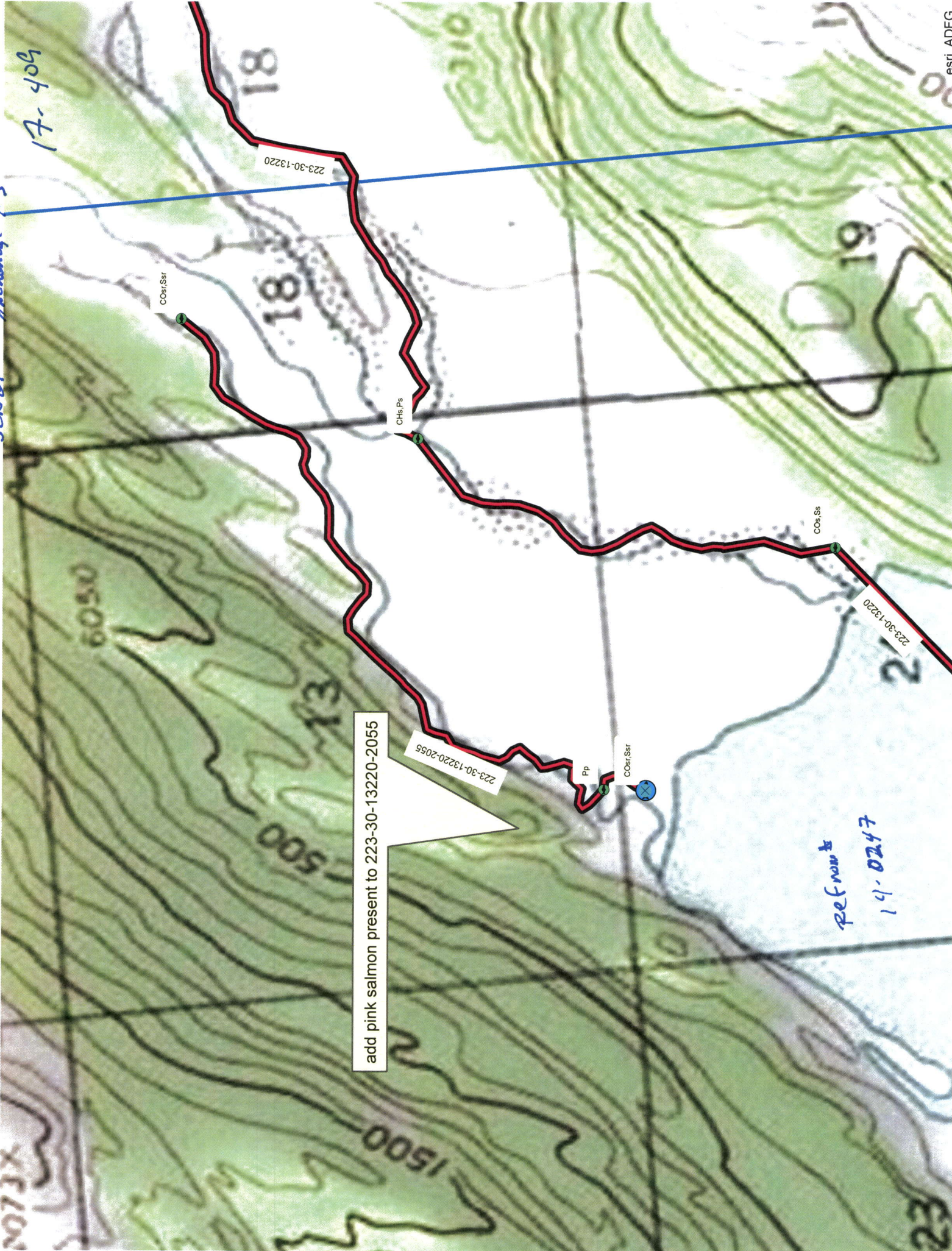
This is where the fun begins, and I guess the nomination history will need to be examined if the fix isn't as easy as fixing a typo.

Let me know if I can offer any assistance in understanding any of this.

Skip Repetto
GIS Analyst
AK Dept of Fish and Game
Anchorage, AK USA
(907) 267-2331

SCN 01 Exchange A-3

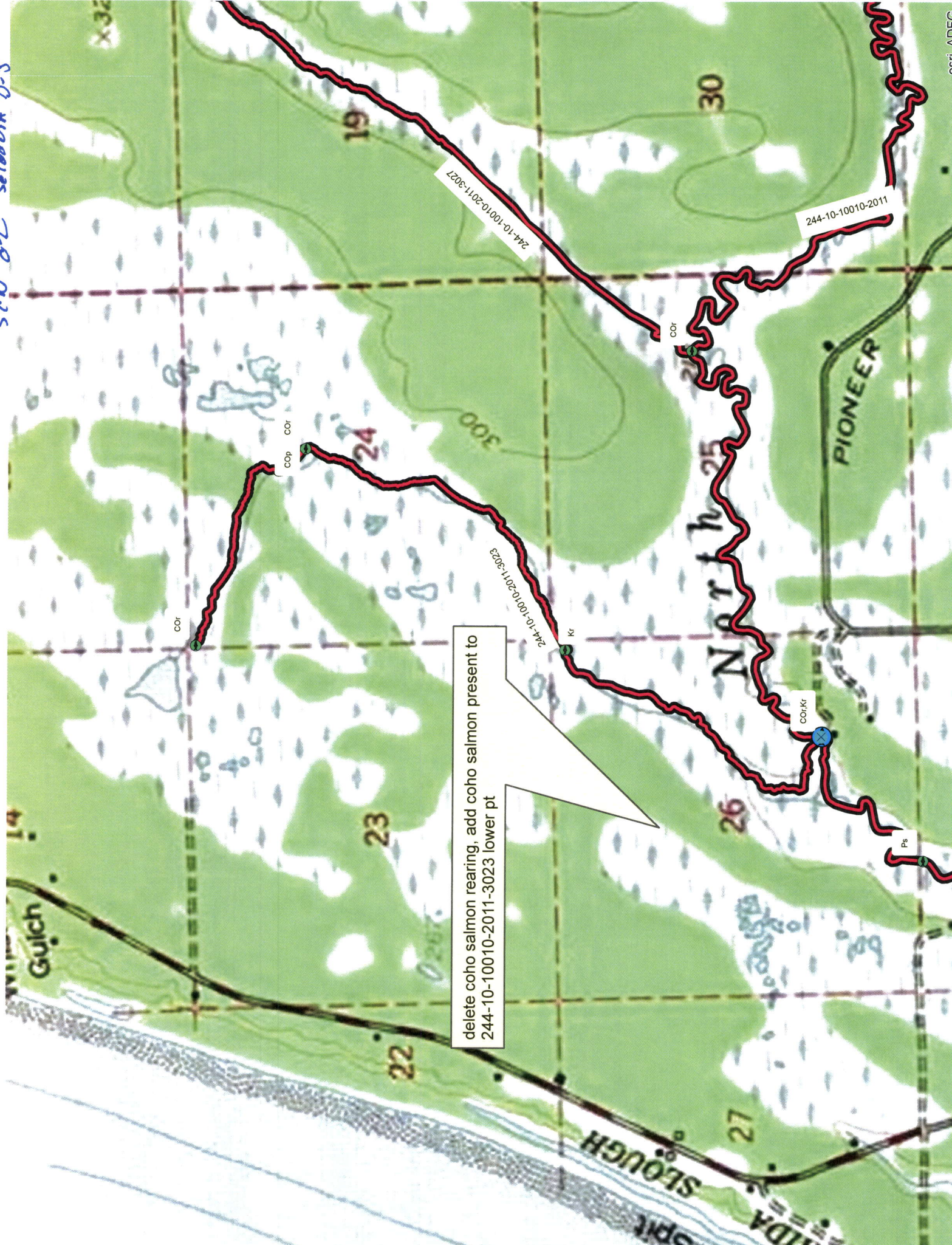
17-404



add pink salmon present to 223-30-13220-2055

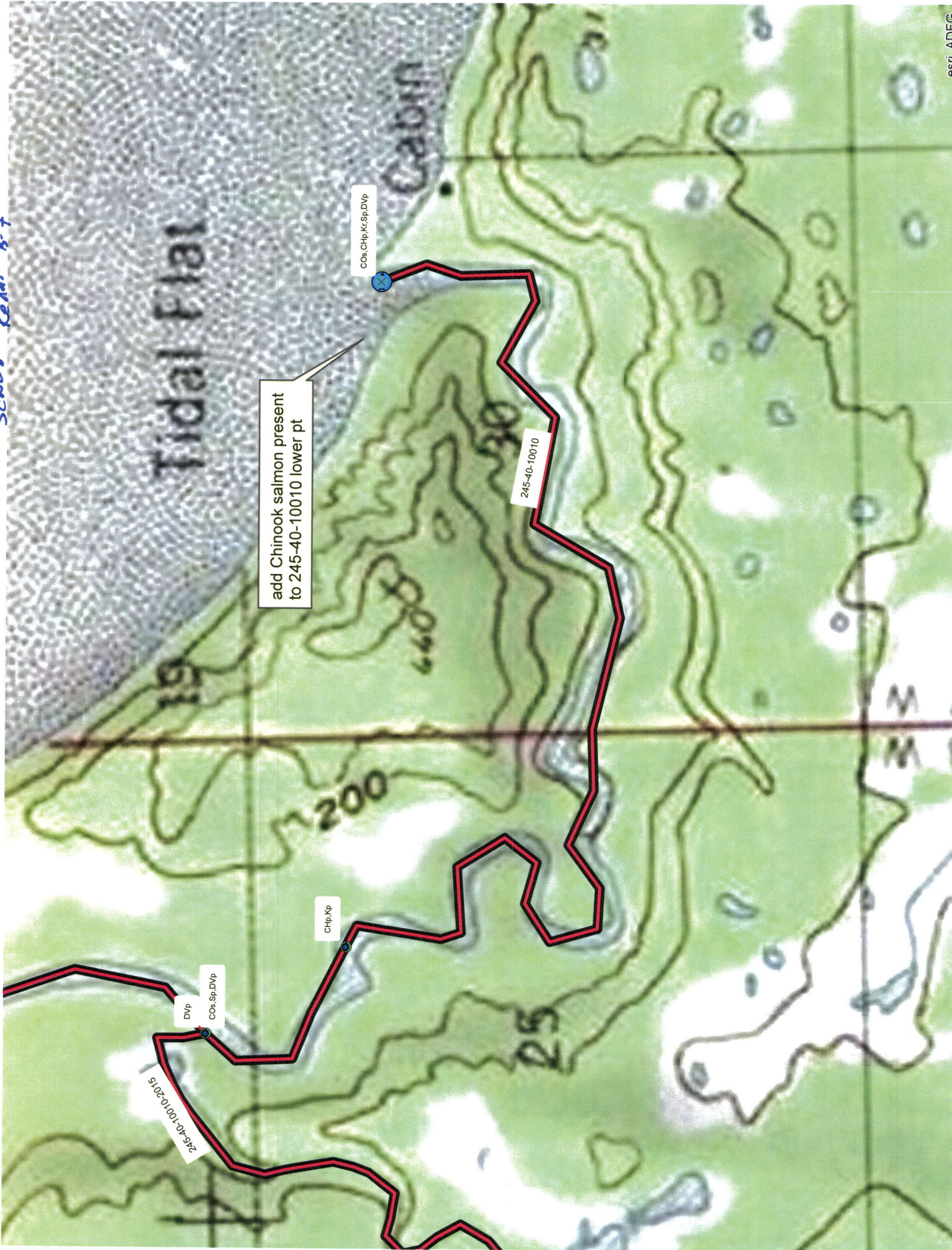
Ref point
17-0247

SCN 02 Seldovia D-5

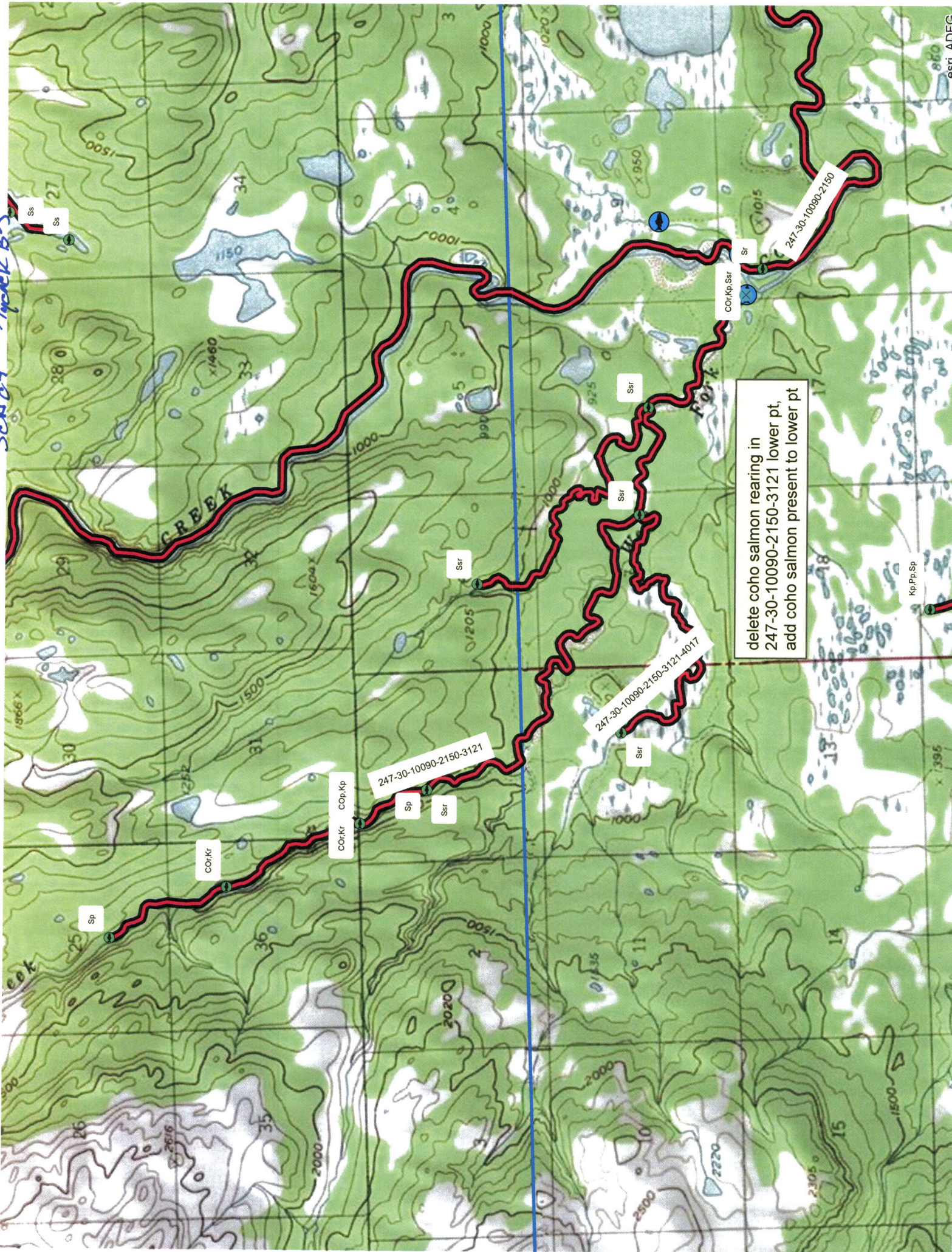


delete coho salmon rearing, add coho salmon present to
244-10-10010-2011-3023 lower pt

SCN03 Keni 8-7



Sc 104 Track B-5



delete coho salmon rearing in
247-30-10090-2150-3121 lower pt,
add coho salmon present to lower pt

SCN06 ANCHORAGE C-6 SL 6-6

