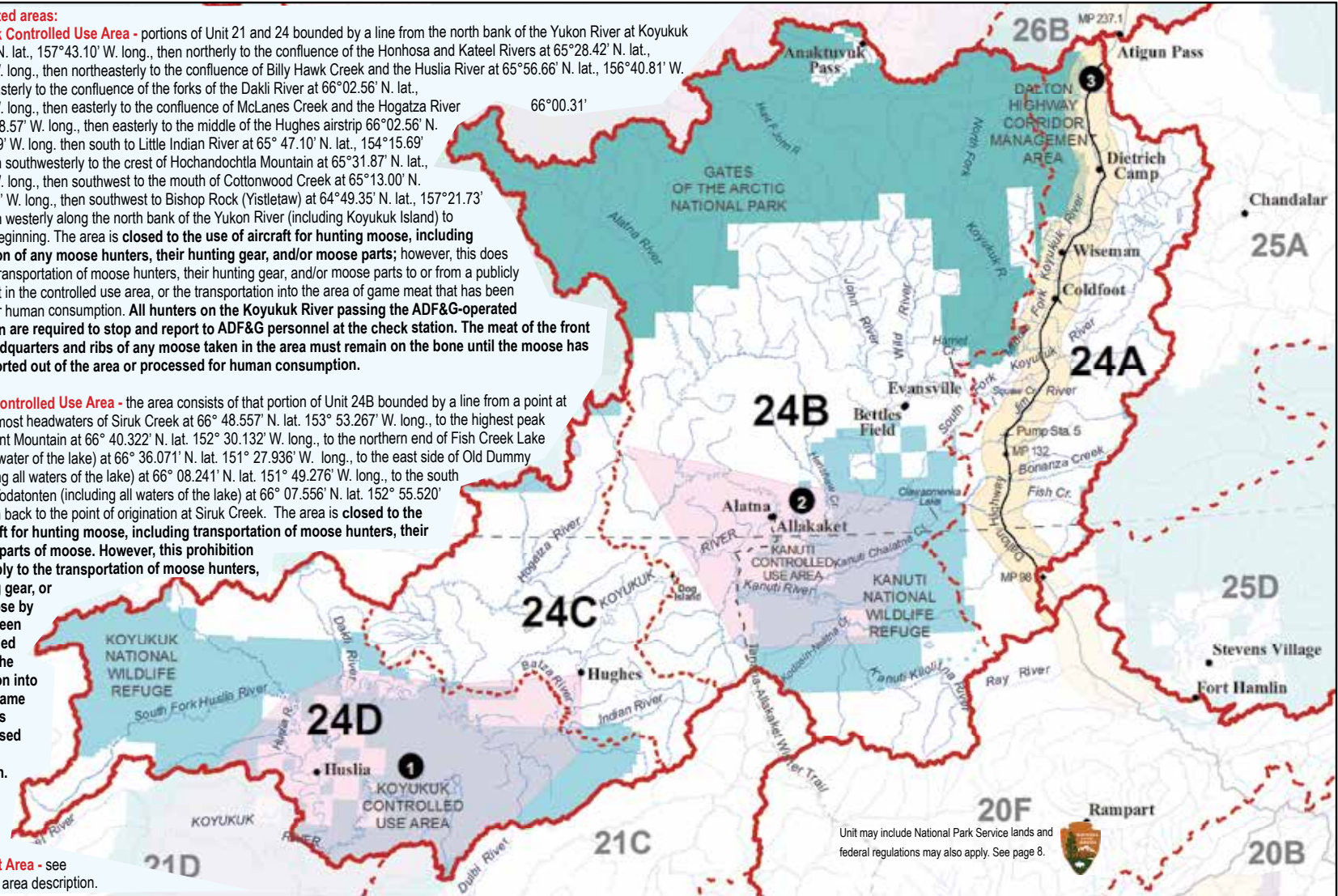


**State restricted areas:**

**1 Koyukuk Controlled Use Area** - portions of Unit 21 and 24 bounded by a line from the north bank of the Yukon River at Koyukuk at 64°52.58' N. lat., 157°43.10' W. long., then northerly to the confluence of the Honhosa and Kateel Rivers at 65°28.42' N. lat., 157°44.89' W. long., then northeasterly to the confluence of Billy Hawk Creek and the Huslia River at 65°56.66' N. lat., 156°40.81' W. long., then easterly to the confluence of the forks of the Dakli River at 66°02.56' N. lat., 156°12.71' W. long., then easterly to the confluence of McLanes Creek and the Hogatza River N. lat., 155°18.57' W. long., then easterly to the middle of the Hughes airstrip 66°02.56' N. lat., 154°15.69' W. long. then south to Little Indian River at 65°47.10' N. lat., 154°15.69' W. long., then southwesterly to the crest of Hochandochita Mountain at 65°31.87' N. lat., 154°52.18' W. long., then southwest to the mouth of Cottonwood Creek at 65°13.00' N. lat., 156°6.43' W. long., then southwest to Bishop Rock (Yistletaw) at 64°49.35' N. lat., 157°21.73' W. long., then westerly along the north bank of the Yukon River (including Koyukuk Island) to the point of beginning. The area is **closed to the use of aircraft for hunting moose, including transportation of any moose hunters, their hunting gear, and/or moose parts**; however, this does not apply to transportation of moose hunters, their hunting gear, and/or moose parts to or from a publicly owned airport in the controlled use area, or the transportation into the area of game meat that has been processed for human consumption. **All hunters on the Koyukuk River passing the ADF&G-operated check station are required to stop and report to ADF&G personnel at the check station. The meat of the front quarters, hindquarters and ribs of any moose taken in the area must remain on the bone until the moose has been transported out of the area or processed for human consumption.**

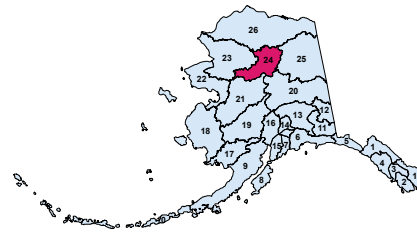
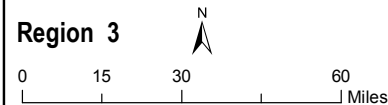
**2 Kanuti Controlled Use Area** - the area consists of that portion of Unit 24B bounded by a line from a point at the northern most headwaters of Siruk Creek at 66°48.557' N. lat. 153°53.267' W. long., to the highest peak of Double Point Mountain at 66°40.322' N. lat. 152°30.132' W. long., to the northern end of Fish Creek Lake (including all water of the lake) at 66°36.071' N. lat. 151°27.936' W. long., to the east side of Old Dummy Lake (including all waters of the lake) at 66°08.241' N. lat. 151°49.276' W. long., to the south end of Lake Todatonten (including all waters of the lake) at 66°07.556' N. lat. 152°55.520' W. long., then back to the point of origination at Siruk Creek. The area is **closed to the use of aircraft for hunting moose, including transportation of moose hunters, their gear, and/or parts of moose. However, this prohibition does not apply to the transportation of moose hunters, their hunting gear, or parts of moose by aircraft between publicly owned airports, or the transportation into the area of game meat that has been processed for human consumption.**

**3 Dalton Highway Corridor Management Area** - see page 114 for area description.



# Unit 24 Koyukuk

Region 3



### Game Management Units / Special Management Areas

- Closed Areas
- Controlled Use Areas
- Management Areas
- State Refuges, Sanctuaries, & Critical Habitat Areas
- Other State Lands
- National Parks
- National Preserves & Other Federal Lands
- Unit Boundary
- Subunit Boundary
- City Boundary
- Military Boundary
- Military Closure
- Tangle Lakes Archaeological District
- Roads
- Railroads
- Trails

# Unit 24 Koyukuk

See map on page 128 for state restricted areas in Unit 24.

**Unit 24:** Koyukuk River drainage upstream from but not including the Dulbi River drainage;

**Unit 24A:** the Middle Fork of the Koyukuk River drainage upstream from but not including the Harriet Creek and North Fork Koyukuk River drainages, the South Fork of the Koyukuk River drainage upstream from Squaw Creek, the Jim River drainage, the Fish Creek drainage upstream from and including the Bonanza Creek drainage, to the 1,410 ft. peak of the hydrologic divide with the northern fork of the Kanuti Chalatna Creek near N66° 33.303' W151° 03.637' and following the unnamed northern fork of the Kanuti Chalatna Creek to the confluence of the southern fork of the Kanuti Chalatna Creek near N66° 27.090' W151° 23.841', 4.2 miles SSW (194° true) of Clawanmenka Lake and following the unnamed southern fork of the Kanuti Chalatna Creek to the hydrologic divide with the Kanuti River drainage near N66° 19.789' W151° 10.102', 3.0 miles ENE (79 degrees true) from the 2,055 ft. peak on that divide, and the Kanuti River drainage upstream from the confluence of an unnamed creek near N66° 13.050' W151° 05.864', 0.9 miles SSE (155 degrees true) of a 1,980 ft. peak on that divide, and following that unnamed creek to the Unit 24 boundary on the hydrologic divide to the Ray River drainage near N66° 03.827' W150° 49.988' at the 2,920 ft. peak of that divide;

**Unit 24B:** the Koyukuk River drainage upstream from Dog Island to the Subunit 24(A) boundary;

**Unit 24C:** the Hogatza River drainage, the Koyukuk River drainage upstream from Batza River on the north side of the Koyukuk River and upstream from and including the Indian River drainage on the south side of the Koyukuk River to the Subunit 24(B) boundary;

**Unit 24D:** the remainder of Unit 24.

OPEN TO:		<b>R</b> = RESIDENTS ONLY	<b>B</b> = RESIDENTS AND NONRESIDENTS	<b>N</b> = NONRESIDENTS ONLY			
OPEN TO:	UNIT/ AREA	BAG LIMIT AND SPECIAL INSTRUCTIONS			PERMIT/ HUNT #*	OPEN SEASON	
<b>Black Bear</b> <ul style="list-style-type: none"> <li>• See pages 24-28 for bear information and salvage requirements.</li> <li>• Portions of Unit 24A are within the DHCMA and additional restrictions apply, see page 114.</li> </ul>							
<b>B</b>	24	<b>Three bears</b>				no closed season	
<b>Brown/Grizzly Bear</b> <ul style="list-style-type: none"> <li>• No resident tag required.</li> <li>• Nonresident hunters must be accompanied by a guide, see page 10.</li> <li>• See pages 24-28 for additional bear hunting information.</li> <li>• Evidence of sex must remain naturally attached to the hide.</li> <li>• Portions of Unit 24A are within the DHCMA and additional restrictions apply, see page 114.</li> </ul>							
<b>B</b>	24	<b>One bear</b> every regulatory year				Aug 10-June 30	
In addition to other regulations, subsistence regulations apply to the following "Residents Only" hunts (see page 25)							
<b>R</b>	24	<b>One bear</b> every regulatory year by permit available in Galena, Fairbanks and McGrath beginning July 11			RB601	Aug 10-June 30	
<b>Caribou</b> <ul style="list-style-type: none"> <li>• In bag limit, "caribou" means an animal of either sex; "bull" means male caribou; "cow" means a female caribou.</li> <li>• Unit 24 meat-on-bone salvage requirements page 22.</li> <li>• In all hunts limited to one sex, evidence of sex must remain naturally attached to the meat.</li> <li>• Portions of Unit 24A are within the DHCMA and additional restrictions apply, see page 114.</li> </ul>							
<b>R</b>	24A	south of the south bank of the Kanuti River	<b>One caribou</b>	A portion of this area is within the DHCMA and additional restrictions apply. See page 114.	HT	Aug 10-Mar 31	
<b>N</b>			<b>One caribou</b>		HT	Aug 10-Sept 30	
<b>R</b>	24A	remainder	<b>Ten caribou</b>		HT	July 1 - Apr 30	
<b>N</b>			<b>Two bulls</b>		HT	Aug 1-Sept 30	
<b>R</b>	24B	south of the south bank of the Kanuti River, upstream from and including that portion of the Kanuti-Kilolitna River drainage, bounded by the southeast bank of the Kodosin-Nolitna Creek, then downstream along the east bank of the Kanuti-Kilolitna River to its confluence with the Kanuti River	<b>One caribou</b>		HT	Aug 10-Mar 31	
<b>N</b>			<b>One caribou</b>		HT	Aug 10-Sept 30	
<b>R</b>	24B	remainder	<b>Five caribou per day</b> however, calves may not be taken	<b>Bulls</b>	HT	July 1-Oct 14 Feb 1-June 30	
				<b>Cows</b>	HT	July 15-Apr 30	
<b>N</b>				<b>One bull</b> however, calves may not be taken	HT	Aug 1-Sept 30	
<b>R</b>	24C	<b>Five caribou per day</b> however, calves may not be taken			<b>Bulls</b>	HT	July 1-Oct 14 Feb 1-June 30
<b>R</b>	24D				<b>Cows</b>	HT	Sept 1-Mar 31
<b>N</b>		<b>One bull</b> however, calves may not be taken			HT	Aug 1-Sept 30	

\*Hunt numbers starting with a "C" = Community, "D" = Drawing, "HT" = Harvest ticket, "R" = Registration, "T" = Tier II. See pages 14-15.

OPEN TO:		<b>R</b> = RESIDENTS ONLY	<b>B</b> = RESIDENTS AND NONRESIDENTS	<b>N</b> = NONRESIDENTS ONLY		
OPEN TO:	UNIT/ AREA	BAG LIMIT AND SPECIAL INSTRUCTIONS		PERMIT/ HUNT #*	OPEN SEASON	
<b>Moose</b> <ul style="list-style-type: none"> <li>• In areas indicated by a ★ federal restrictions exist, see page 8.</li> <li>• Proxy hunting restrictions apply, see page 12.</li> <li>• In bag limit, "moose" means an animal of either sex; "bull" means a male moose.</li> <li>• 50-inch antlers and brow tines are defined on pages 30-31.</li> <li>• Meat taken in Unit 24 prior to Oct 1 must remain on the bones of the front quarters, hindquarters, and ribs until removed from the field or processed for human consumption.</li> <li>• In all hunts limited to one sex, evidence of sex must remain naturally attached to the meat.</li> <li>• Portions of Unit 24A are within the DHCMA and additional restrictions apply, see page 114.</li> </ul>						
<b>R</b>	24A	Dalton Highway Corridor Management Area	One bull by bow and arrow only by permit	DM920/DM922	Sept 1-Sept 25	
<b>N</b>			One bull with 50-inch antlers or antlers with 4 or more brow tines on at least one side by bow and arrow only by permit	DM920/DM922	Sept 5-Sept 25	
<b>R</b>	24A	remainder	One bull	HT	Sept 1-Sept 25	
<b>N</b>			One bull with 50-inch antlers or antlers with 4 or more brow tines on at least one side	HT	Sept 5-Sept 25	
<b>R</b>	24B ★		One bull	HT	Sept 1-Sept 25	
<b>R</b>			OR	One antlered bull by permit available online at <a href="http://hunt.alaska.gov">http://hunt.alaska.gov</a> or in person in Hughes, Allakaket, and Fairbanks beginning Dec 6	RM833	Dec 15-Apr 15
<b>N</b>			One bull with 50-inch antlers or antlers with 4 or more brow tines on at least one side	HT	Sept 5-Sept 25	
<b>R</b>	24C	within the Koyukuk Controlled Use Area	One bull by permit available at a check station established by the department, Huslia, and Hughes beginning Aug 30	Trophy value must be destroyed	RM832	Sept 1-Sept 25
<b>R</b>			OR	One bull by permit	DM828/DM830	Sept 5-Sept 25
<b>R</b>			One antlered bull by permit available online at <a href="http://hunt.alaska.gov">http://hunt.alaska.gov</a> or in person in Hughes, Allakaket, and Fairbanks beginning Dec 6	RM833	Dec 15-Apr 15	
<b>N</b>			One bull with 50-inch antlers or antlers with 4 or more brow tines on at least one side by permit	DM823/825/827/829	Sept 5-Sept 25	
<b>R</b>	24C	remainder	One bull by permit available online at <a href="http://hunt.alaska.gov">http://hunt.alaska.gov</a> in person at license vendors in Units 21B, 21D, 24, and ADF&G Fairbanks beginning Aug 9	RM838	Sept 5-Sept 25	
<b>R</b>			OR	One antlered bull by permit available online at <a href="http://hunt.alaska.gov">http://hunt.alaska.gov</a> or in person in Hughes, Allakaket, and Fairbanks beginning Dec 6	RM833	Dec 15-Apr 15
<b>N</b>			One bull with 50-inch antlers or antlers with 4 or more brow tines on at least one side by permit, available online at <a href="http://hunt.alaska.gov">http://hunt.alaska.gov</a> or in person at license vendors in Units 21B, 21D, 24, and ADF&G in Fairbanks beginning Aug 9	RM838	Sept 5-Sept 25	

\*Hunt numbers starting with a "C" = Community, "D" = Drawing, "HT" = Harvest ticket, "R" = Registration, "T" = Tier II. See pages 14-15.



OPEN TO:		R = RESIDENTS ONLY	B = RESIDENTS AND NONRESIDENTS	N = NONRESIDENTS ONLY			
OPEN TO:	UNIT/ AREA	BAG LIMIT AND SPECIAL INSTRUCTIONS			PERMIT/ HUNT #*	OPEN SEASON	
<b>Moose</b> <i>continued</i>							
R	24D within the Koyukuk Controlled Use Area	One bull by permit available at a check station established by the department, Huslia, and Hughes beginning Aug 30		Trophy value must be destroyed	RM832	Sept 1-Sept 25	
R		OR One bull by permit			DM828/830	Sept 5-Sept 25	
R		One bull			HT	Dec 1-Dec 10	
N		One bull with 50-inch antlers or antlers with 4 or more brow tines on at least one side by permit			DM823/825/827/829	Sept 5-Sept 25	
R	24D east of the Koyukuk Controlled Use Area	One bull by permit, available online at <a href="http://hunt.alaska.gov">http://hunt.alaska.gov</a> or in person at license vendors in Units 21B, 21D, 24, and ADF&G in Fairbanks beginning Aug 9			RM838	Sept 5-Sept 25	
N		One bull with 50-inch antlers or antlers with 4 or more brow tines on at least one side by permit, available online at <a href="http://hunt.alaska.gov">http://hunt.alaska.gov</a> or in person at license vendors in Units 21B, 21D, 24, and ADF&G in Fairbanks beginning Aug 9					
R	24D remainder	OR One bull by permit available online at <a href="http://hunt.alaska.gov">http://hunt.alaska.gov</a> , in person at license vendors in Units 21B, 21D, 24, and ADF&G Fairbanks beginning Aug 9		Trophy value must be destroyed	RM834	Sept 5-Sept 25	
R		OR One bull by permit			DM892	Sept 5-Sept 25	
N		One bull with 50-inch antlers or antlers with 4 or more brow tines on at least one side by permit			DM892	Sept 5-Sept 25	
<b>Sheep</b> <ul style="list-style-type: none"> <li>• In areas indicated by a ★ federal restrictions exist, see page 8.</li> <li>• Nonresident hunters must be accompanied by a guide, see page 10</li> <li>• See definition of full-curl horn and drawings on page 33.</li> <li>• Horns must accompany meat from the field.</li> <li>• Ram horns from Unit 24A and Remainder of 24B must be sealed within 30 days of kill.</li> <li>• Portions of Unit 24A are within the DHCMA and additional restrictions apply, see page 114.</li> </ul>							
R	24A	One ram with full-curl horn or larger. Youth hunt only			HT	Aug 1-Aug 5	
N		One ram with full-curl horn or larger every four regulatory years. Youth hunt only					
R		One ram with full-curl horn or larger			HT	Aug 10-Sept 20	
N		One ram with full-curl horn or larger every four regulatory years					
R	24B ★	within the John River drainage upstream from Till Creek, and that portion within the Glacier River drainage		Three sheep only one may be a ewe	HT	Aug 1-Apr 30	
R	24B remainder	One ram with full-curl horn or larger. Youth hunt only			HT	Aug 1-Aug 5	
N		One ram with full-curl horn or larger every four regulatory years. Youth hunt only					
R		One ram with full-curl horn or larger			HT	Aug 10-Sept 20	
N		One ram with full-curl horn or larger every four regulatory years					
<b>Wolf</b> <p>A portion of this unit is within a predator control area. See predator control supplement for special regulations. Supplement available online at <a href="http://hunt.alaska.gov">http://hunt.alaska.gov</a></p> <ul style="list-style-type: none"> <li>• Hides must be sealed within 30 days of kill.</li> <li>• No nonresident tag required.</li> <li>• Portions of Unit 24A are within the DHCMA and additional restrictions apply, see page 114.</li> </ul>							
B	24	Ten wolves				Aug 10-May 31	
<b>Wolverine</b> <ul style="list-style-type: none"> <li>• Hides must be sealed within 30 days of kill.</li> <li>• Portions of Unit 24A are within the DHCMA and additional restrictions apply, see page 114.</li> </ul>							
B	24	One wolverine				Sept 1-Mar 31	

\*Hunt numbers starting with a "C" = Community, "D" = Drawing, "HT" = Harvest ticket, "R" = Registration, "T" = Tier II. See pages 14-15.