


**An Overview of  
Subsistence Research  
in Region V**

**An oral report to the Board of Game  
Kotzebue, January 2024  
RC 4 Tab 1.3**

**Helen Cold  
ADF&G Subsistence**

1

1



**Overview**

- Introduction to research conducted in GMUs 18, 22, 23, and 26A
- Harvest composition by representative study communities
- Continuing research

ADF&G Subsistence

2

2

# Introduction to Region V

- 4 Game Management Units (18, 22, 23, and 26A)
- Encompasses over 75 communities, including hub communities of Bethel, Nome, Kotzebue, and Utqiagvik
- Geographic area from Kuskokwim Bay in the south to the North Slope



3

3

# Subsistence Research



ADF&G Subsistence

- Community baseline studies (focus on one year)
- Local and Traditional Knowledge
- Harvest monitoring (multi-year)

4

4

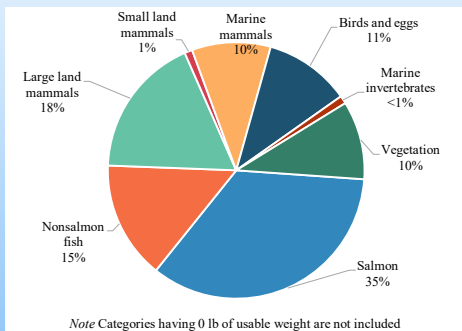
# Unit 18

- Yukon-Kuskokwim Delta
- Population: ~25,500 (2022)
- 39 communities
- Primarily Central Yup'ik
- Mixed cash-subsistence economies
- Subsistence activities are year-round and diverse
- Growing harvests of moose



5

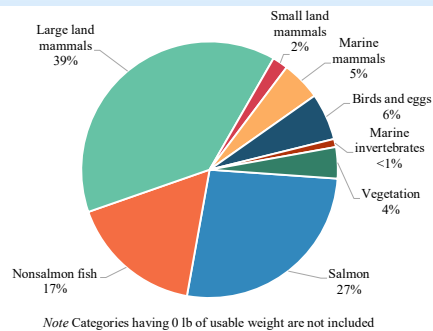
## Harvest Composition in Unit 18



### Quinhagak 2013

295 lbs of wild foods per capita

Moose and caribou accounted for 18% of the total harvest



### Pilot Station 2013

158 lbs of wild foods per capita

Moose, caribou, and black bear accounted for 39% of the total harvest

6

6

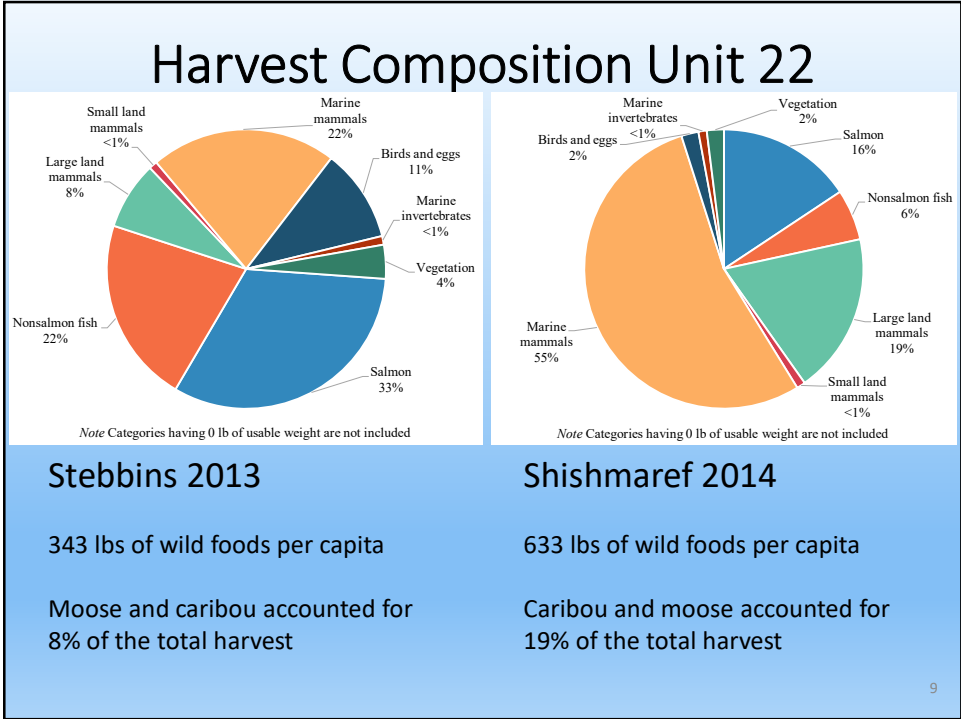
# Large Land Mammals in Akiachak and Kwethluk, 2020–2021

- Study is moose-focused due to Mulchatna caribou herd declines
- Respondents credit rising moose population to moose-hunting moratorium from 2005 to 2010
- High local reliance on both summer and winter moose hunts
- Respondents noted that they would like to see a liberalized moose hunt in Unit 18 near Bethel

## Unit 22

- Southern Seward Peninsula
- Population ~ 9,690 (2020)
- 17 communities
- Primarily Iñupiat
- Reduced access to caribou
- Harvest survey data collected in 11 communities from 2009–2023





9

## Unit 22 Moose Subsistence harvests and uses

ADF&G Subsistence

Moose are an important subsistence resource in Unit 22, in part due to recent lack of access to WAH

Positive C&T finding: 1987

ANS: 250 – 300 moose

10



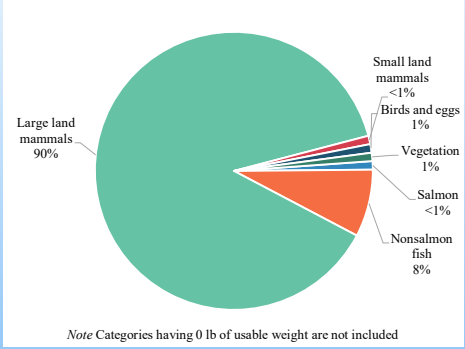


# Unit 26A

- Area description
- Population ~7,070 (2020)
- 6 communities
- Primarily Iñupiat
- Diverse resource use
- Harvest survey data collected in 4 Unit 26A communities from 2009-2023



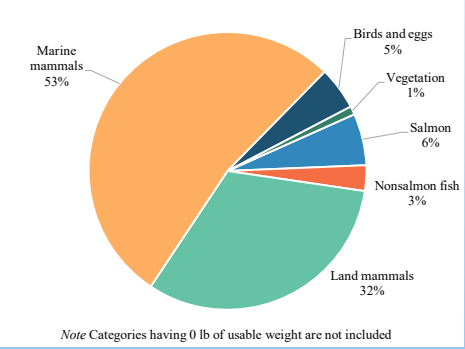
## Harvest Composition Unit 26A



### Anaktuvuk Pass 2014

391 lbs of wild foods per capita

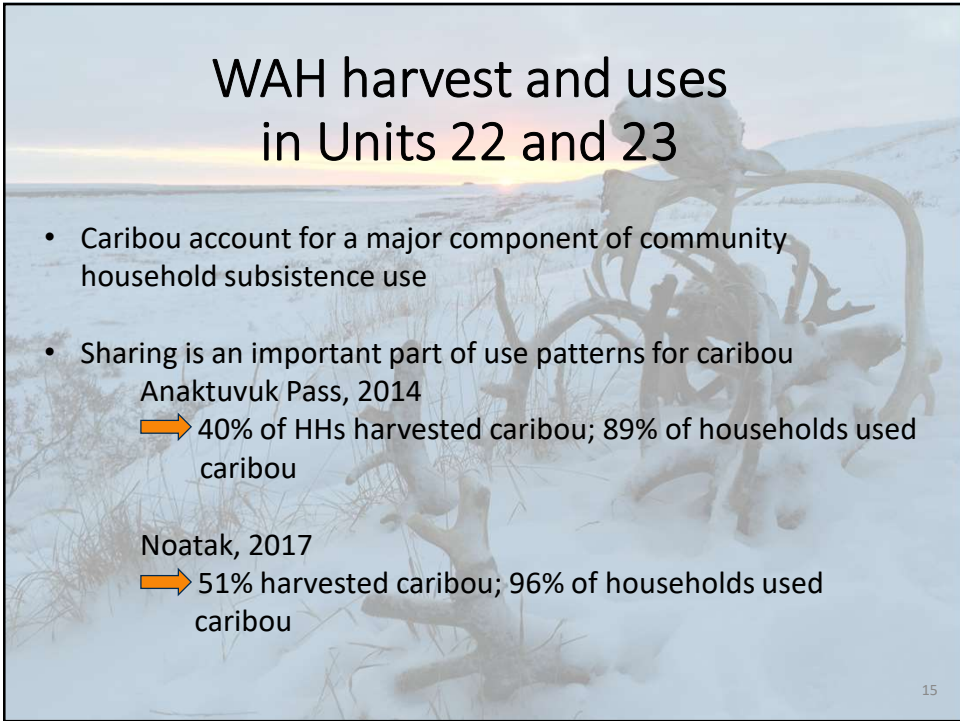
Caribou accounted for 84% of the total harvest



### Point Lay 2012

595 lbs of wild foods per capita

Caribou accounted for 32% of the total harvest

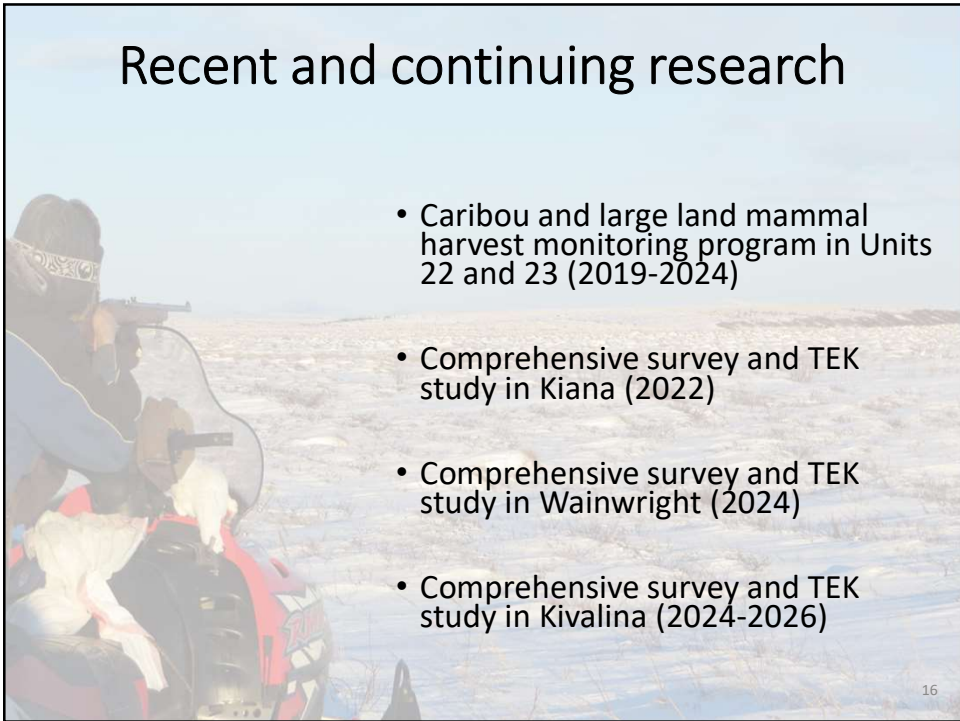


## WAH harvest and uses in Units 22 and 23

- Caribou account for a major component of community household subsistence use
- Sharing is an important part of use patterns for caribou
  - Anaktuvuk Pass, 2014
    - ➔ 40% of HHs harvested caribou; 89% of households used caribou
  - Noatak, 2017
    - ➔ 51% harvested caribou; 96% of households used caribou

15

15



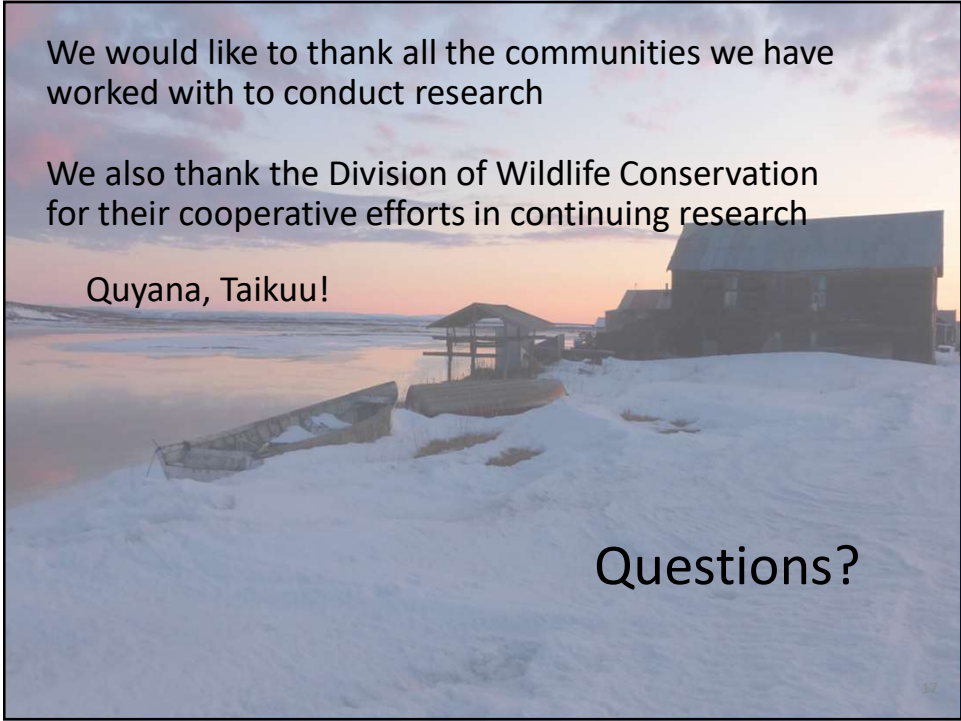
## Recent and continuing research

- Caribou and large land mammal harvest monitoring program in Units 22 and 23 (2019-2024)
- Comprehensive survey and TEK study in Kiana (2022)
- Comprehensive survey and TEK study in Wainwright (2024)
- Comprehensive survey and TEK study in Kivalina (2024-2026)

16

16





We would like to thank all the communities we have worked with to conduct research

We also thank the Division of Wildlife Conservation for their cooperative efforts in continuing research

Quyana, Taikuu!

Questions?