

## Arctic/ Western Overview

- 1) General Description
- 2) Land Status
- 3) Offices and Staff
- 4) FY23 Budget
- 5) Challenges

Tony Gorn  
Regional Supervisor  
Region 5

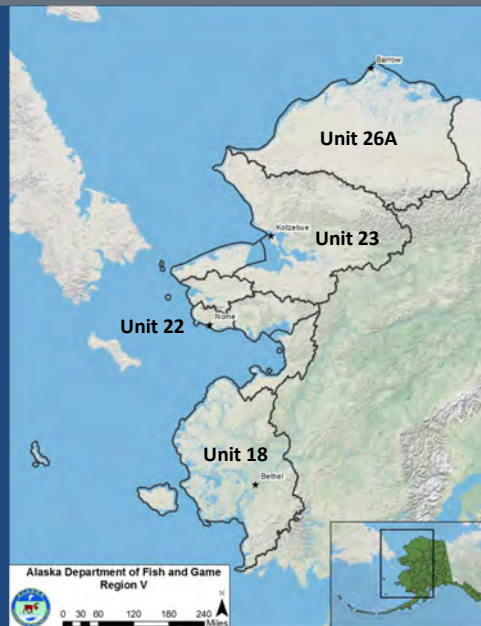


1

1

## Arctic/ Western Overview

- ~30% of Alaska
- Includes Units 18, 22, 23, and 26A
- Offices located in Utqiagvik, Kotzebue, Nome, and Bethel
- Additional staff located in Anchorage and Fairbanks



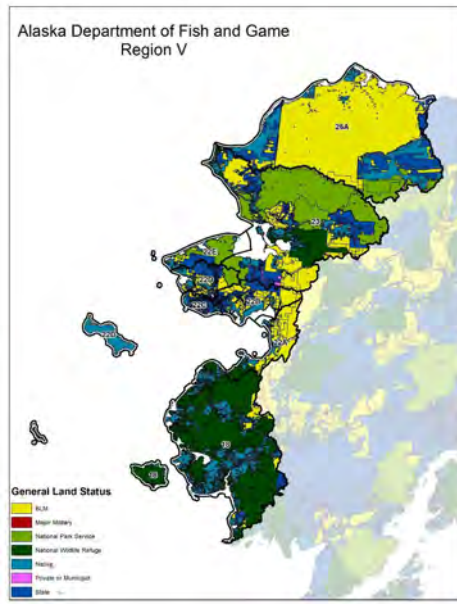
2

2

## Arctic/ Western Overview

- ~163, 000 sq. miles
- 31% State Managed Lands (12% State, 18% Native, 1% Private)
- 69% Federal Managed Lands

3

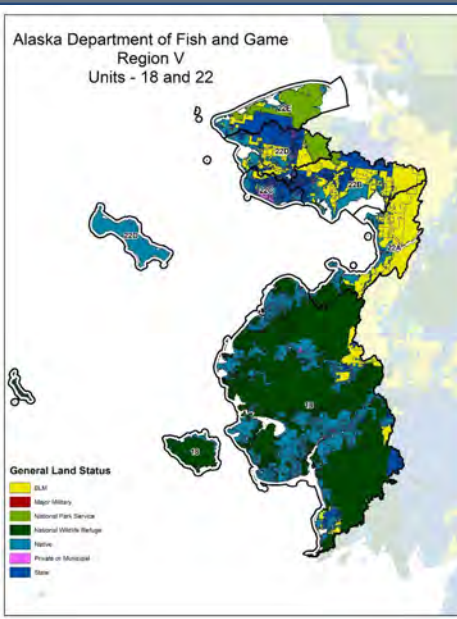


3

## Arctic/ Western Overview

- Unit 18
- ~40,600 sq. miles
- 30% State Managed Lands (12% State, 28% Native, <1% Private)
- 70% Federal Managed Lands

4

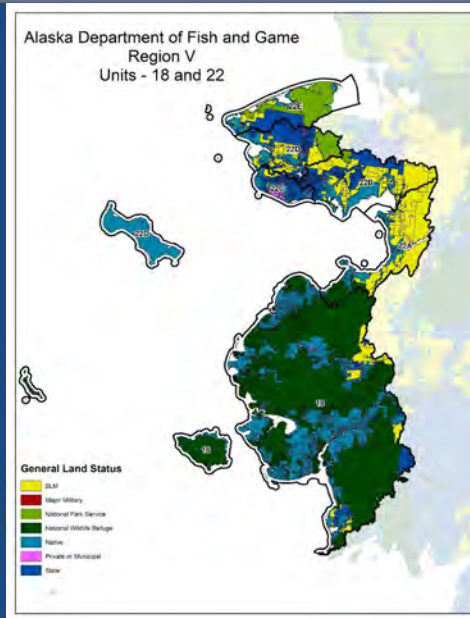


4

## Arctic/ Western Overview

- **Unit 22**
- **~25, 500 sq. miles**
- **48% State Managed Lands (23% State, 24% Native, <2% Private)**
- **52% Federal Managed Lands**

5

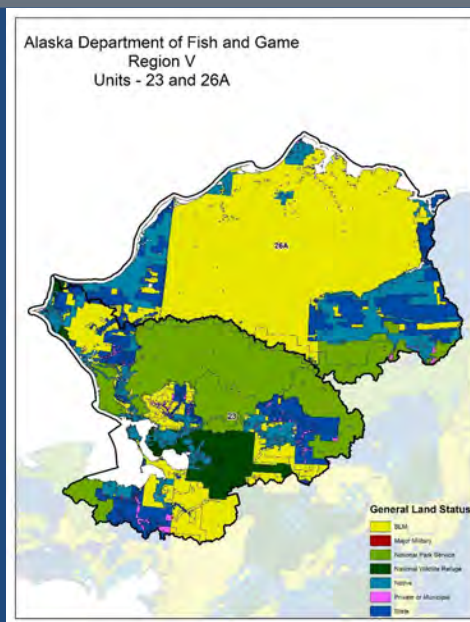


5

## Arctic/ Western Overview

- **Unit 23**
- **~43, 500 sq. miles**
- **26% State Managed Lands (15% State, 11% Native, ~1% Private)**
- **73% Federal Managed Lands**

6

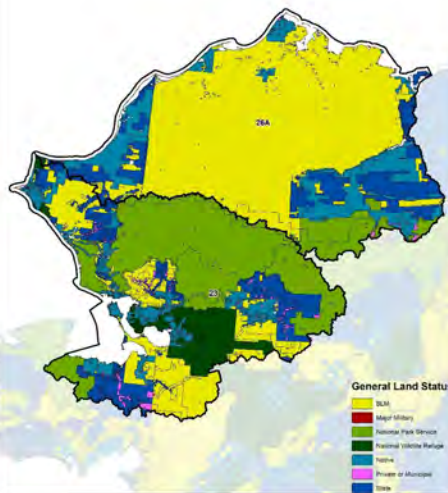


6

## Arctic/ Western Overview

- **Unit 26A**
- **~53, 400 sq. miles**
- **26% State Managed Lands (12% State, 14% Native, <1% Private)**
- **73% Federal Managed Lands**

Alaska Department of Fish and Game  
Region V  
Units - 23 and 26A



7

7

## Arctic/ Western- Bethel Office

Patrick Jones, Unit 18 Area Biologist  
Keith Oster, Unit 18 Assistant Area Biologist  
Phil Perry, Region 5 Management Coordinator



8

8

## Arctic/ Western- Nome Office

Sara Germain, Unit 22 Area Biologist  
Alicia Carson, Unit 22 Assistant Area Biologist  
Brynn Parr, Regional Research Biologist  
Betsy Brennan, Administrative Manager  
Chris Ta, Program Technician  
Tony Gorn, Regional Supervisor



9

9

## Arctic/ Western- Kotzebue Office

Christie Osburn, Unit 23 Area Biologist  
Alex Hansen, WAH Caribou Biologist  
Brennan Watson, Regional Wildlife Biologist  
Deb Lawton, Region 5 Wildlife Education Specialist  
Kathy Sherman, Program Technician



10

10

## Arctic/ Western- Barrow Office

**Barrow:** Carmen Daggett, Unit 26A Area Biologist



11

11

## Arctic/ Western- Fairbanks and Anchorage Offices

**Fairbanks:** Shawna Karpovich, Research Coordinator  
Joelle Hepler, Region 5 Research Biologist

**Anchorage:** Adam Craig, Biometrician

12

12

## FY24 Arctic/ Western Budget Summary

Region 5 Operating Budget:   \$~1.4 million  
   25% Fish & Game Fund  
   <1% General Fund

CIP Funded Projects:           \$~600,000.00

FY24 Total:                       \$~2.0 million

13

13

## FY24 Arctic/ Western Budget Summary

- Administration**
- Vehicles/Facilities and Aircraft Maintenance/Rebuild
  - Regulations and BOG Support
  - Hunter Information and Services

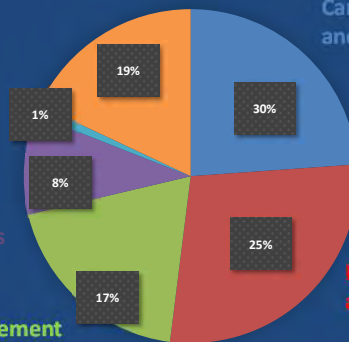
- Other Wildlife**
- Wolf
  - Brown Bear
  - Fur
  - Waterfowl
  - Small Game

Sheep Management and Research Activities

Muskox Management and Research Activities

Caribou Management and Research Activities

Moose Management and Research Activities



14

14

## Arctic/ Western Overview

### Status Reports

- Muskox Report- Brynn Parr
- WAH Overview- Alex Hansen

### Region 5 Wildlife Management Challenges

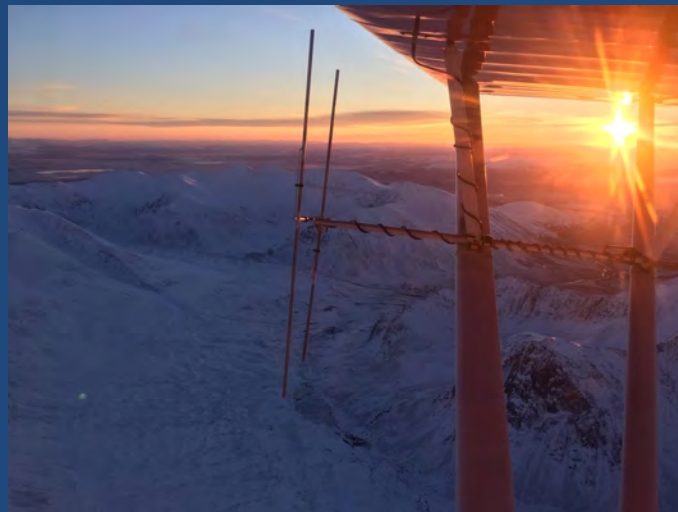
- Dual Management
- Moose Management
- Caribou Management
- Muskox Management
- Predator Abundance
- User Conflict Issues
- Public Outreach

15

15

## Arctic/ Western Overview

Thank You



16

16