

Koyukuk River Fish & Game Advisory Committee

Members

- Jack Reackoff (Chair)
 - Undesignated
- Michelle Quillin
 - Undesignated
- Darrel Vent
 - Huslia
- Jack Wholecheese
 - Huslia
- Vincent Simon
 - Allakaket
- Charles Ned
 - Allakaket
- Hugh Bifelt
 - Hughes



KOYUKUK RIVER AC

139

Reduce the bag limit for taking caribou in Units 21D
Remainder, 22, 23, 24B
Remainder, 24C, 24D and 26A
to four caribou per year, only
one of which may be a cow

SUPPORTED 5-0

- Due to the BOG action to modify and take on this proposal in Kotzebue
- The committee endorsed the strategy with a set bag limit of 15 Caribou, no more than one cow, and was supported unanimously.

140

Close nonresident caribou hunting in Units 21D
Remainder, 22, 23, 24B
Remainder, 24C, 24D,
and 26A

SUPPORTED 5-0

- The committee voted to support Proposal 140 due to the unknown composition of the large bull component and the risk of further decline of the population and recruiting bulls to support a sustained yield harvest.
- Committee members added that a minimum bull-cow ratio of 35 per 100 cows must be maintained.
- The committee strongly feels that there should be an absolute minimum of 6 to 7 large bulls, aged five years or older, per 100 cows.
 - I. Large five-year-old bulls are the breeding component and have the fat reserves to cover cows for breeding during the very short estrous cycle of Caribou.
 - II. Younger bulls are rejected by cows who are waiting for large bulls to arrive.
 - III. If large bulls are not available adult cows may miss breeding, and if bred by younger bulls, poor cohorts are produced due to protracted calving dates.
 - IV. Young bulls expand too much energy with their shallow fat reserves and are subject to higher winter mortalities.
- The committee does not support non-resident participation at this time, as harvesting beyond the sustainability of large bulls will put the population at risk of further decline.

141

Close the youth sheep hunts in
Units 24A and 25A

SUPPORTED 5-0

- The committee voted to support proposal 141.
- Legal Rams found in the survey conducted over the last three years are very few.
- The ewe-like population continues to fall, showing not enough recruitment to stabilize the population.
- The current population is far below carrying capacity and has been for the last 20 years.
- The Dall sheep population is continuing to decline from the corridor in units 24A and 25A west.
- Committee members familiar with GMU 24B stated that subsistence hunters from Allakaket and Alatna say there are very few sheep, also in the Alatna and John River drainages.
- The committee supported Proposal 140 due to there being no additional rams available to allow for more hunting opportunities outside of the normal hunting season in the youth hunt.

142

Change sheep hunting in portions of Units 24A and 25A to archery only

OPPOSED 0-5

- The committee is opposed to proposal 142.
- The committee had an extensive discussion on the lack of any legal Rams in the Dalton Highway Corridor since 2018, along with the lack of enforcement and the high number of hunters accessing the area via the road.
- The committee discussed the massive volumes of increasing hunter participation and that the harvest reporting does not reflect the high number of hunters.
- It does not do enough to protect the Dall sheep population associated with the Dalton highway subunits.
- The committee feels that the BOG needs to address the sheep decline with a management strategy that involves a limited drawing permit in GMUs 24A and 25A west.

143

Eliminate the extended season archery sheep hunts within the Dalton Highway Corridor Management Area

SUPPORTED 5-0

- The committee voted to support proposal 143.
- The committee had a thorough discussion about the importance of implementing further conservation measures for the Dalton Highway Corridor management area for Dall sheep.
- The current extended harvest opportunity without limiting participation for an extended 15 days to October 5 cannot be supported for sustained yield.

144

Allow nonresident sheep hunting by drawing permit only in portions of Units 24A and 26B and reduce the season

**SUPPORT AS
AMENDED 5-0**

- The committee voted to support proposal 144 only as amended.
- The committee discussed again, the need for conservation and reduced participation for any hunting opportunity.
- The committee felt that the proposal as written was flawed and that all permits could hunt either GMU 26B west of the Sagavanirktok or 24A.
- The committee also felt that 10 draw permits were far too many for the very limited adult ram populations in the described subunits.
- **The committee modified proposal 144 to delineate draw permits for 26B and 24A independently with only two non-resident draw permits in each sub-unit.**
- Guided hunters have a very high success rate, there are only a few adult rams available, and each of those subunits and overall sheep populations are falling.
- The committee does feel that a limited, drawing participation, for the described units is the only way forward for bringing the populations back to carrying capacity and sustainability.

145

Reauthorize a winter any-moose season during March in a portion of Unit 21D

SUPPORTED 5-0

- Our area biologist described a healthy moose population in portions of unit 21D Kaiyuh flats.
- The moose population can support some antler-less cow harvest.
- The committee voted to adopt the reauthorization of any moose harvest in the described unit.

146 & 147

• Adopt an Intensive Management Program and implement wolf control on all state lands in Units 24A and 25A.

• Allow hunters to take wolves in Units 24 and 25 the same day they have been airborne.

OPPOSE D
0-5

- The Committee unanimously opposed proposal 146 and 147.
- The committee reviewed the intensive management plans for GMUs 24 and 25A.
- It was discussed that the Porcupine Caribou arrive in September along with additional wolves. These wolves leave with the Caribou when they migrate out in March and April.
- The resident wolf numbers have relatively high harvest rates by locals, especially in GMUs 24A and 26B.
- The resident wolf populations have decreased significantly due to consistent harvest and cannibalization after the snowshoe hare decline in 2020.
- Local trappers are against aerial harvest at this point in time.

148

Create a predator control program for wolves in Units 24A and 25A

OPPOSED 0-5

- The committee opposed proposal 148 due to its inclusion of GMU 24A.
- The sustained and consistent harvest of wolves by trapping, harvesting of free-ranging fur-bearers, as well as archery hunting is the main reason this proposal was opposed unanimously.

149

Lengthen the wolf trapping season in Units 24 and the remainder of 25 by one month, to open October 1

OPPOSED 0-5

- The committee voted against proposal 149.
- During the meeting, the committee debated the possibility of commencing wolf trapping on October 1st.
- The Committee discussed the high likelihood of trapping bears incidentally at that time of year, bears would have to be euthanized and surrendered.
- The current season is deemed the best time for harvesting wolves.

150 and 151

•Lengthen the wolf hunting season in Units 24 and 25
•Increase the hunting bag limit for wolves in Units 24 and 25

OPPOSED 0-5

- The committee voted to oppose proposals 150 and 151.
- The committee discussed extensively the value of hunting wolves into June.
- Wolves are shedding their fur extensively in June and have no value.

152

Increase the resident bag limit for brown bear in Units 24C and 24D, and open a fall bait season in Units 21B and 24B

SUPPORTED 5-0

- This is a proposal by the Koyukuk River AC as the brown bear population is currently not harvested at minimum sustained yield.
- The committee believes that additional hunting opportunities can be given to the residents of these subunits.
- Growing brown bear populations are affecting black bear and moose survival, especially with the decline of Yukon River salmon.
- The committee voted to support the proposal.

153

Lengthen the wolverine hunting and trapping seasons in Unit 21 by one month to end on April 30

SUPPORTED 5-0

- The committee voted to support proposal 153.
- The committee discussed the biological parameters of wolverines and the sustainability of their harvesting until April 30.
- It was mentioned that it would be unlikely to harvest female wolverines with a den under the snowpack.
- Adult male wolverines would be the most likely to be taken by the few trappers who continue to harvest wolves and beavers through April 30.
- The committee felt that a lengthening of the season would have an insignificant impact on the wolverine population and would be sustainable.

154

Change the bag limit for caribou in the Remainder of Unit 26B

**SUPPORT AS
AMENDED 5-0**

- The committee voted to support proposal 154 only as amended:
 - I. The committee opposes cow harvest during migration from August to September and suggests limiting cow harvest to one per resident hunter after October 1.
 - II. The committee feels strongly that the resident bag limit should be no more than five Caribou, 4 bulls from July 1st-April 30, and no more than one cow with a season for cow harvest from October 1st-April 30th.
 - III. The non-resident season August 1st-September 15th with a bag limit of 1 bull caribou should be maintained in regulation.
- The committee feels strongly that there needs to be an absolute minimum composition of 6 to 7 large bulls, of age five years old and older, per 100 cows.
- Currently, managers have no idea what the bull composition is for the Central Arctic herd, especially the large bulls sought by non-resident hunters.
- Suppressing caribou herds causes them not to migrate into wintering areas that are vast and unused on the south Slope of the Brooks Range.
- There is a lot of misunderstanding regarding the ecology of Caribou, what they eat annually, and harvest parameters for herds. The nutritional models used by managers for range depletion is incorrect and has not been quantified with field documentation.
- Therefore, the committee amended and modified proposal 154 to reflect a more sustainable management strategy.

155

Increase resident caribou hunting opportunity in Unit 26B Remainder

**SUPPORT AS
AMENDED 5-0**

- The committee revised the proposal to allow a resident bag limit of five Caribou, but no more than 1 may be a cow, to be taken from October 1 to April 30.

156

Change the nonresident caribou hunt in Unit 26B Remainder to a drawing hunt or registration hunt with a limited number of permits available

SUPPORTED 5-0

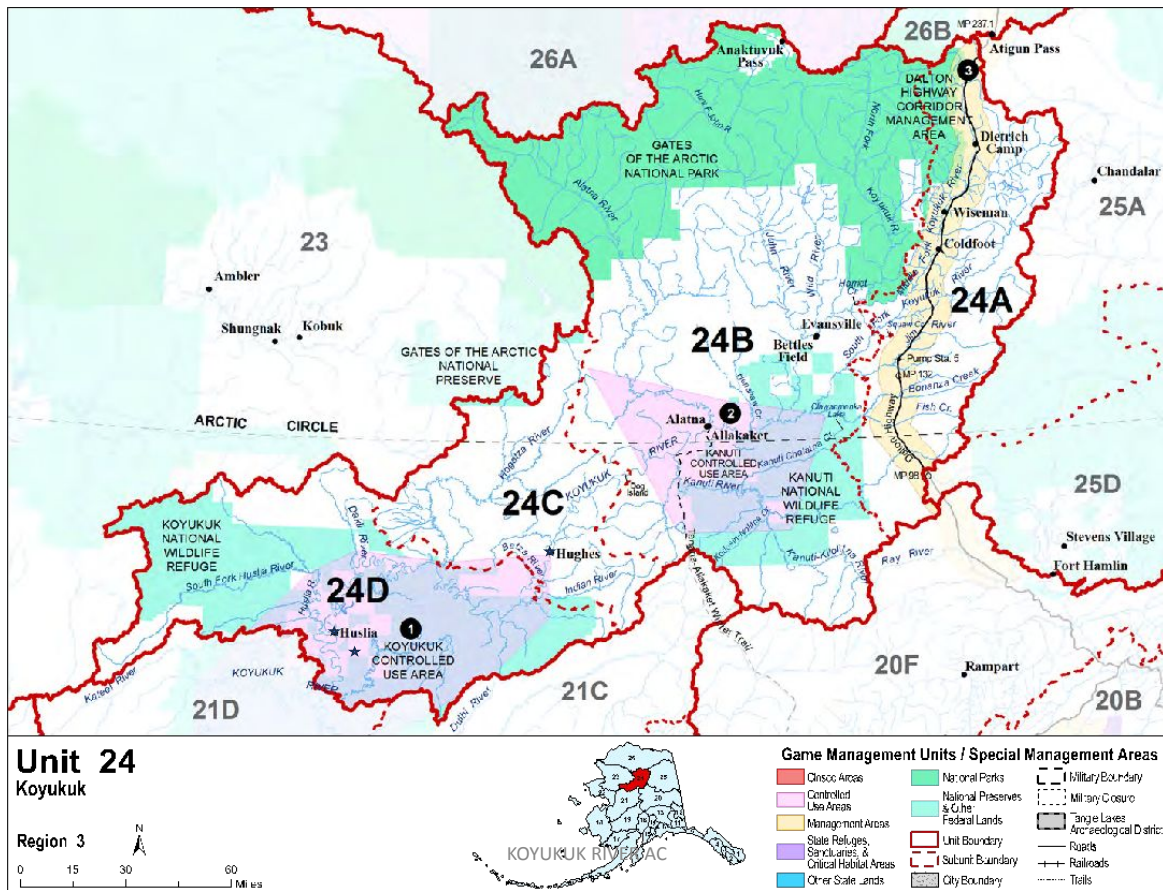
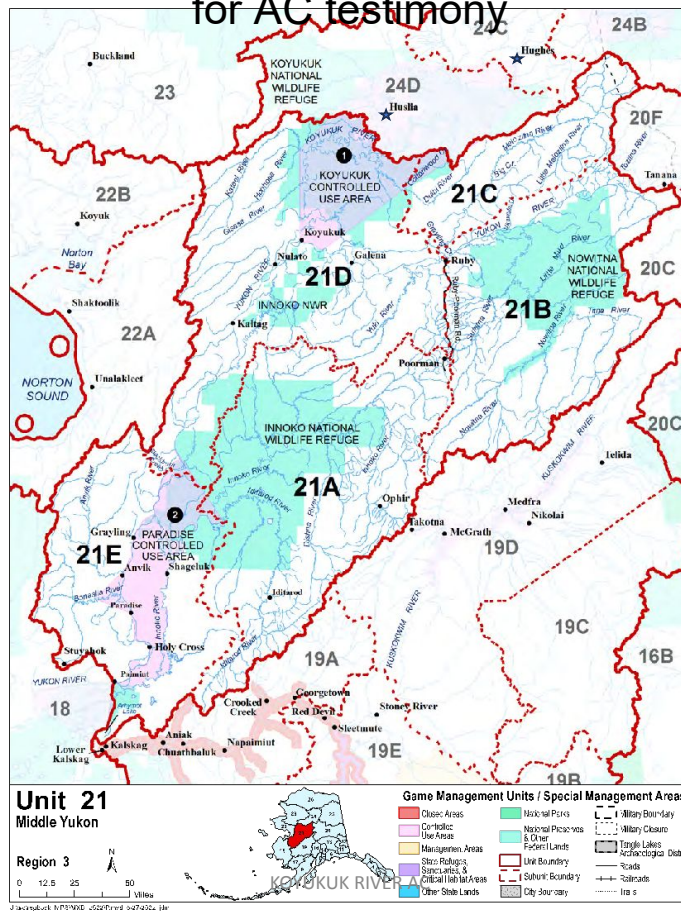
- The committee has expressed concerns regarding the increasing number of nonresident hunters in unit 26B.
- They have suggested the implementation of a drawing or registration permit system to regulate the situation.
- Currently, a significant number of non-residents are camping in the area for extended periods of time in unit 26B remainder.
- The committee has fully endorsed the proposal with unanimous support.

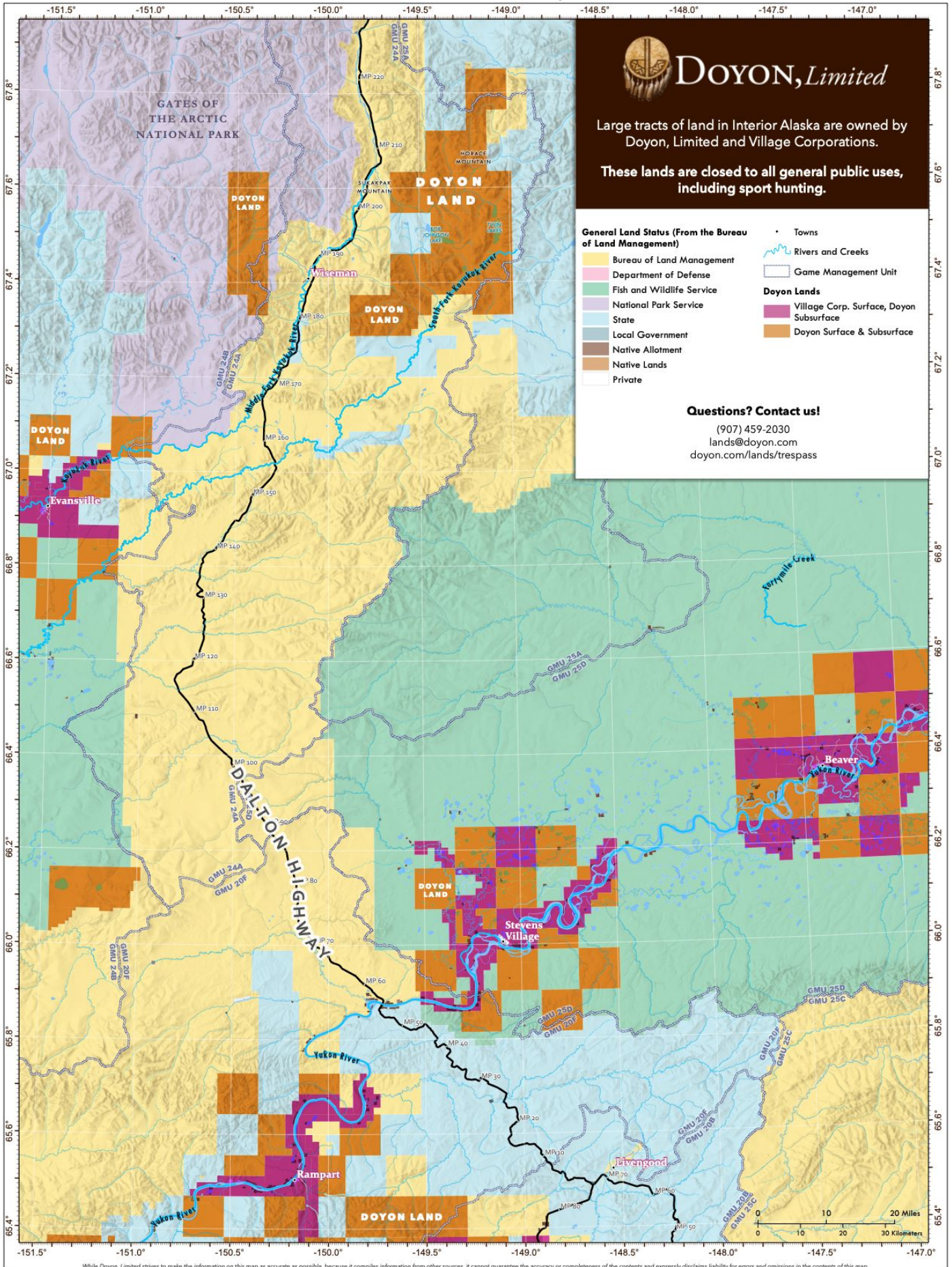
207

Repeal the age criteria for full-curl ram horns for Dall sheep hunts in Interior and Eastern Arctic Regions

SUPPORTED 5-0

- The committee has fully endorsed proposal 207 with unanimous support.
- The committee discussed the need to conserve large fully mature rams, and breeding structures to bring the sheep populations back to carrying capacity.
- High participation of hunters, unfamiliar with aging annual rings on sheep rams is causing a loss of recruiting adult Rams.
- It is imperative to repeal the criteria to count rings in the field before harvest.
- **The committee feels strongly that this should've been a state-wide repeal.**





Large tracts of land in Interior Alaska are owned by Doyon, Limited and Village Corporations.

These lands are closed to all general public uses, including sport hunting.

- General Land Status (From the Bureau of Land Management)**
- Bureau of Land Management
 - Department of Defense
 - Fish and Wildlife Service
 - National Park Service
 - State
 - Local Government
 - Native Allotment
 - Native Lands
 - Private
- Towns**
- Rivers and Creeks**
- Game Management Unit**
- Doyon Lands**
- Village Corp. Surface, Doyon Subsurface
 - Doyon Surface & Subsurface

Questions? Contact us!
(907) 459-2030
lands@doyon.com
doyon.com/lands/trespass

While Doyon, Limited strives to make the information on this map as accurate as possible, because it compiles information from other sources, it cannot guarantee the accuracy or completeness of the contents and expressly disclaims liability for errors and omissions in the contents of this map.